

**TRACT 43572 - Portion of Blocks 26, and 27, West Cameron Area, Revised, Cameron Parish, Louisiana**

The beds and bottoms of all water bodies belonging to the State of Louisiana located in Blocks 26, and 27, West Cameron Area, Revised, together with any present lands formed by accretion to the shoreline or islands formed therein, located in Cameron Parish, Louisiana, owned by and not presently under mineral lease as of November 13, 2013, from the State of Louisiana, the geographical area of which is more fully described as follows: Beginning at a point having Coordinates of X = 1,373,100.00 and Y = 388,875.00; thence East 5,385.00 feet to a point having Coordinates of X = 1,378,485.00 and Y = 388,875.00; thence South 1,248.28 feet to a point on the Three Mile Line, as decreed by the Supreme Court of the United States, as determined by a Special Master appointed therein, in litigation styled *United States v. State of Louisiana et al No. 9 Original*, in 1975, having Coordinates of X = 1,378,485.00 and Y = 387,626.72; thence along said Three Mile Line: Southwesterly along an arc to the right having a radius of 18,240.60 feet with a center located at X = 1,363,392 and Y = 397,870 to a point having Coordinates of X = 1,373,100.00 and Y = 382,427.06; thence North 6,447.94 feet to the point of beginning, containing **520.27 acres, LESS AND EXCEPT** that portion thereof, if any, lying seaward of the line three nautical miles from the coast line of Louisiana, as said three mile line has been decreed by the Supreme Court of the United States, as determined by a Special Master appointed therein, in litigation styled **United States v. State of Louisiana et al No. 9 Original**, in 1975, all as more particularly outlined on a plat in the Office of Mineral Resources, Department of Natural Resources. All bearings, distances and coordinates are based on the Louisiana Coordinate System of 1927, (South Zone).

NOTE: The above description of the Tract nominated for lease has been provided and corrected, where required, exclusively by the nomination party. Any mineral lease selected from this Tract and awarded by the Louisiana State Mineral and Energy Board shall be without warranty of any kind, either express, implied, or statutory, including, but not limited to, the implied warranties of merchantability and fitness for a particular purpose. Should the mineral lease awarded by the Louisiana State Mineral and Energy Board be subsequently modified, cancelled or abrogated due to the existence of conflicting leases, operating agreements, private claims or other future obligations or conditions which may affect all or any portion of the leased Tract, it shall not relieve the Lessee of the obligation to pay any bonus due thereon to the Louisiana State Mineral and Energy Board, nor shall the Louisiana State Mineral and Energy Board be obligated to refund any consideration paid by the Lessor prior to such modification, cancellation, or abrogation, including, but not limited to, bonuses, rentals and royalties.

NOTE: The State of Louisiana does hereby reserve, and this lease shall be subject to, the imprescriptible right of surface use in the nature of a servitude in favor of the Department of Natural Resources, including its Offices and Commissions, for the sole purpose of implementing,

constructing, servicing and maintaining approved coastal zone management and/or restoration projects. Utilization of any and all rights derived under this lease by the mineral lessee, its agents, successors or assigns, shall not interfere with nor hinder the reasonable surface use by the Department of Natural Resources, its Offices or Commissions, as herein above reserved.

Applicant: ALLEN & KIRMSE, LTD.

Bidder	Cash Payment	Price/Acre	Rental	Oil	Gas	Other

**Legend**  
13110072  
Blocks



0 2,000 Feet

CAMERON PARISH

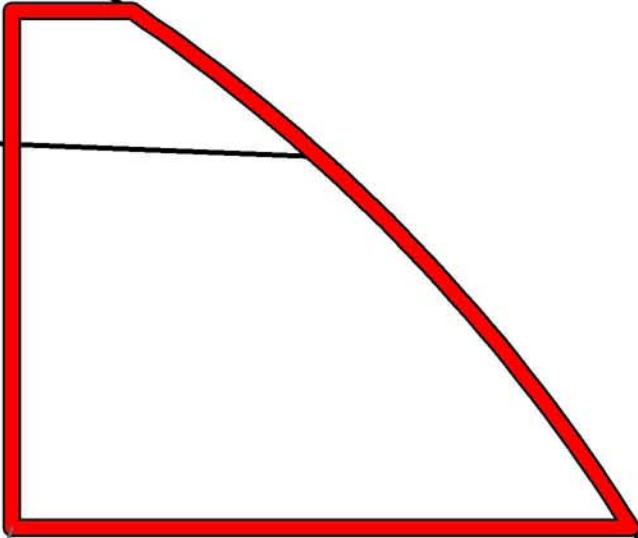
WC0026

WC0027

P.O.B.

GULF OF MEXICO

WEST CAMERON AREA, REVISED



**TRACT 43573 - Portion of Block 26, West Cameron Area, Revised, Cameron Parish, Louisiana**

The beds and bottoms of all water bodies belonging to the State of Louisiana located in Block 26, West Cameron Area, Revised, together with any present lands formed by accretion to the shoreline or islands formed therein, located in Cameron Parish, Louisiana, owned by and not presently under mineral lease as of November 13, 2013, from the State of Louisiana, the geographical area of which is more fully described as follows: Beginning at a point on the West line of Block 26, West Cameron Area, Revised having Coordinates of X = 1,361,935.62 and Y = 384,475.00; thence East 5,779.38 feet to a point having Coordinates of X = 1,367,715.00 and Y = 384,475.00; thence South 4,326.31 feet to a point on the Three Mile Line, as decreed by the Supreme Court of the United States, as determined by a Special Master appointed therein, in litigation styled *United States v. State of Louisiana et al No. 9 Original*, in 1975, having Coordinates of X = 1,367,715.00 and Y = 380,148.69; thence along said Three Mile Line the following: Southwesterly along an arc to the right having a radius of 18,240.60 feet with a center located at X = 1,363,392 and Y = 397,870 to a point having Coordinates of X = 1,364,288 and Y = 379,651; Southwesterly on a straight line to a point having Coordinates of X = 1,363,312 and Y = 379,603 and Southwesterly along an arc to the right having a radius of 18,240.60 feet with a center located at X = 1,362,416 and Y = 397,822 to a point on the West line of said Block 26 having Coordinates of X = 1,361,935.62 and Y = 379,587.73; thence North 4,887.27 feet along the West line of said Block 26 to the point of beginning, containing **627.39 acres, LESS AND EXCEPT** that portion thereof, if any, lying seaward of the line three nautical miles from the coast line of Louisiana, as said three mile line has been decreed by the Supreme Court of the United States, as determined by a Special Master appointed therein, in litigation styled **United States v. State of Louisiana et al No. 9 Original**, in 1975, all as more particularly outlined on a plat in the Office of Mineral Resources, Department of Natural Resources. All bearings, distances and coordinates are based on the Louisiana Coordinate System of 1927, (South Zone).

NOTE: The above description of the Tract nominated for lease has been provided and corrected, where required, exclusively by the nomination party. Any mineral lease selected from this Tract and awarded by the Louisiana State Mineral and Energy Board shall be without warranty of any kind, either express, implied, or statutory, including, but not limited to, the implied warranties of merchantability and fitness for a particular purpose. Should the mineral lease awarded by the Louisiana State Mineral and Energy Board be subsequently modified, cancelled or abrogated due to the existence of conflicting leases, operating agreements, private claims or other future obligations or conditions which may affect all or any portion of the leased Tract, it shall not relieve the Lessee of the obligation to pay any bonus due thereon to the Louisiana State Mineral and Energy Board, nor shall the Louisiana State Mineral and Energy Board be obligated to refund any consideration paid by the Lessor prior to such

modification, cancellation, or abrogation, including, but not limited to, bonuses, rentals and royalties.

NOTE: The State of Louisiana does hereby reserve, and this lease shall be subject to, the imprescriptible right of surface use in the nature of a servitude in favor of the Department of Natural Resources, including its Offices and Commissions, for the sole purpose of implementing, constructing, servicing and maintaining approved coastal zone management and/or restoration projects. Utilization of any and all rights derived under this lease by the mineral lessee, its agents, successors or assigns, shall not interfere with nor hinder the reasonable surface use by the Department of Natural Resources, its Offices or Commissions, as herein above reserved.

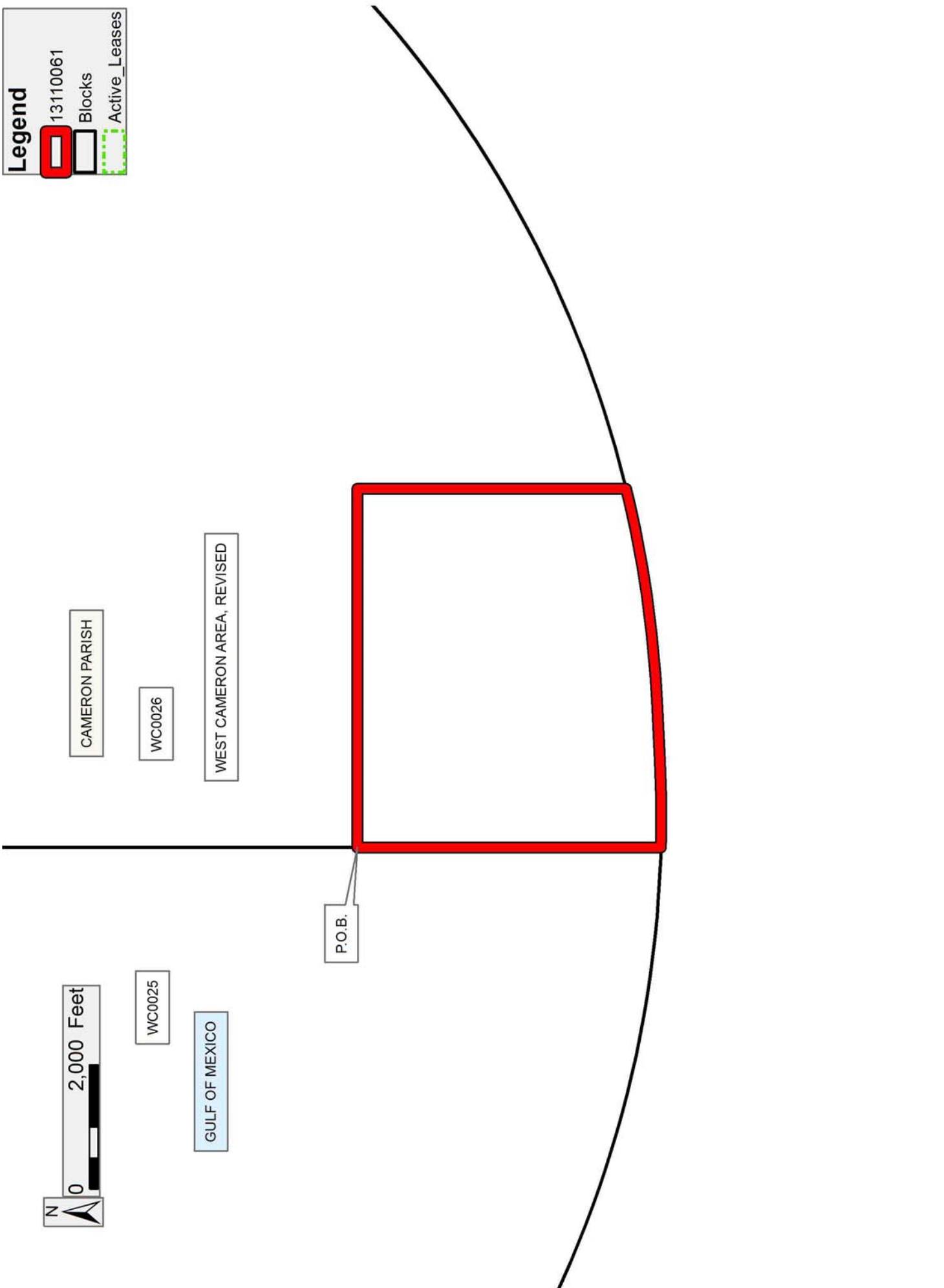
NOTE: It appears, according to our records, that a portion of this Tract is located within the restrictive safety fairway area as set out by the Corps of Engineers, U.S. Army and/or the restrictive anchorage area as set out by the U.S. Coast Guard.

Applicant: ALLEN & KIRMSE, LTD.

Bidder	Cash Payment	Price/Acre	Rental	Oil	Gas	Other

**Legend**

- 13110061
- Blocks
- Active\_Leases



**TRACT 43574 - Portion of Block 26, West Cameron Area, Revised, Cameron Parish, Louisiana**

The beds and bottoms of all water bodies belonging to the State of Louisiana located in Block 26, West Cameron Area, Revised, together with any present lands formed by accretion to the shoreline or islands formed therein, located in Cameron Parish, Louisiana, owned by and not presently under mineral lease as of November 13, 2013, from the State of Louisiana, the geographical area of which is more fully described as follows: Beginning at a point having Coordinates of X = 1,367,715.00 and Y = 384,475.00; thence East 5,385.00 feet to a point having Coordinates of X = 1,373,100.00 and Y = 384,475.00; thence South 2,047.94 feet to a point on the Three Mile Line, as decreed by the Supreme Court of the United States, as determined by a Special Master appointed therein, in litigation styled *United States v. State of Louisiana et al No. 9 Original*, in 1975, having Coordinates of X = 1,373,100.00 and Y = 382,427.06; thence along said Three Mile Line the following: Southwesterly along an arc to the right having a radius of 18,240.60 feet with a center located at X = 1,363,392 and Y = 397,870 to a point having Coordinates of X = 1,367,715.00 and Y = 380,148.69; thence North 4,326.31 feet to the point of beginning, containing **415.13 acres, LESS AND EXCEPT** that portion thereof, if any, lying seaward of the line three nautical miles from the coast line of Louisiana, as said three mile line has been decreed by the Supreme Court of the United States, as determined by a Special Master appointed therein, in litigation styled **United States v. State of Louisiana et al No. 9 Original**, in 1975, all as more particularly outlined on a plat in the Office of Mineral Resources, Department of Natural Resources. All bearings, distances and coordinates are based on the Louisiana Coordinate System of 1927, (South Zone).

NOTE: The above description of the Tract nominated for lease has been provided and corrected, where required, exclusively by the nomination party. Any mineral lease selected from this Tract and awarded by the Louisiana State Mineral and Energy Board shall be without warranty of any kind, either express, implied, or statutory, including, but not limited to, the implied warranties of merchantability and fitness for a particular purpose. Should the mineral lease awarded by the Louisiana State Mineral and Energy Board be subsequently modified, cancelled or abrogated due to the existence of conflicting leases, operating agreements, private claims or other future obligations or conditions which may affect all or any portion of the leased Tract, it shall not relieve the Lessee of the obligation to pay any bonus due thereon to the Louisiana State Mineral and Energy Board, nor shall the Louisiana State Mineral and Energy Board be obligated to refund any consideration paid by the Lessor prior to such modification, cancellation, or abrogation, including, but not limited to, bonuses, rentals and royalties.

NOTE: The State of Louisiana does hereby reserve, and this lease shall be subject to, the imprescriptible right of surface use in the nature of a servitude in favor of the Department of Natural Resources, including its

Offices and Commissions, for the sole purpose of implementing, constructing, servicing and maintaining approved coastal zone management and/or restoration projects. Utilization of any and all rights derived under this lease by the mineral lessee, its agents, successors or assigns, shall not interfere with nor hinder the reasonable surface use by the Department of Natural Resources, its Offices or Commissions, as herein above reserved.

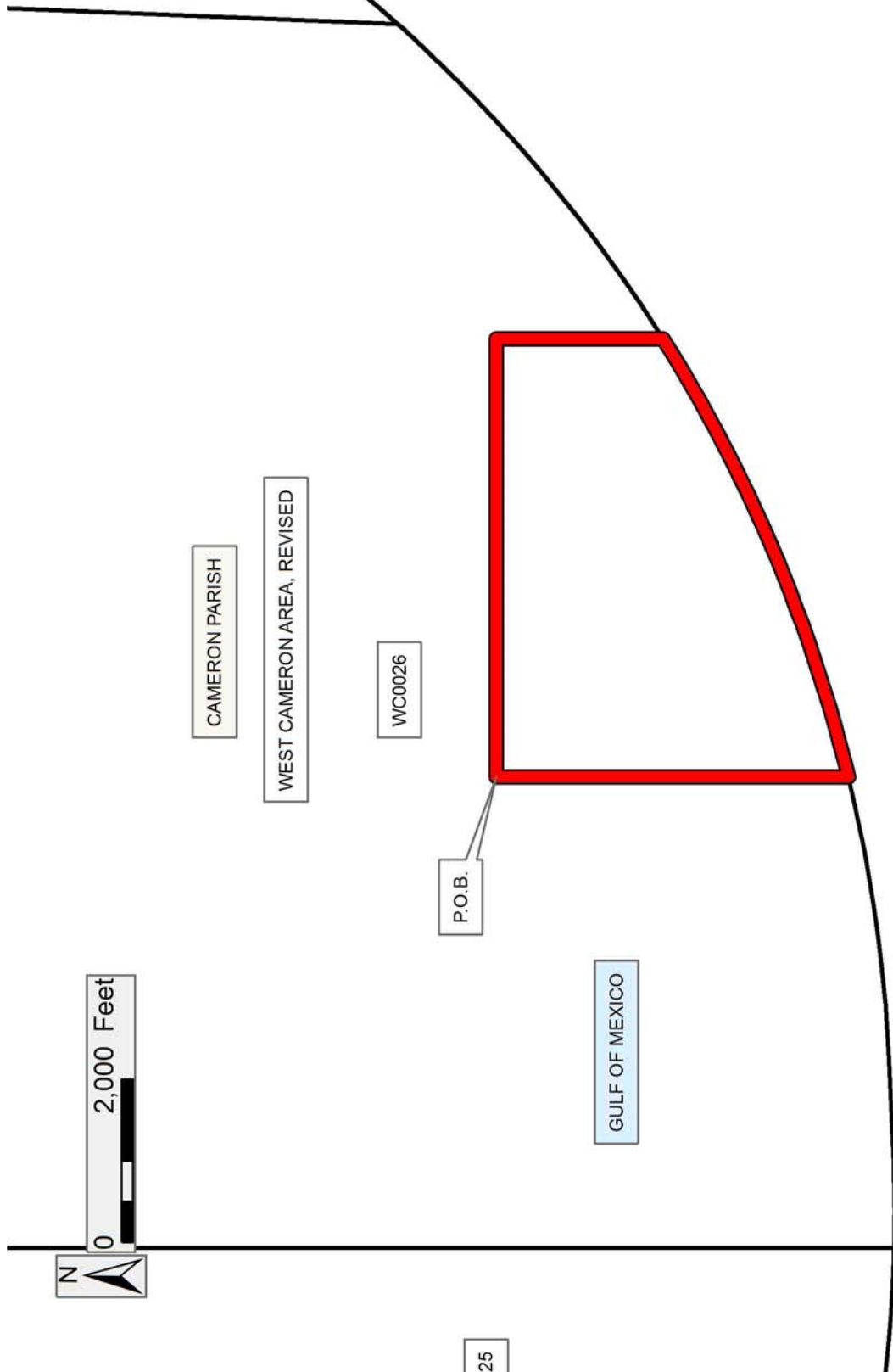
NOTE: It appears, according to our records, that a portion of this Tract is located within the restrictive safety fairway area as set out by the Corps of Engineers, U.S. Army and/or the restrictive anchorage area as set out by the U.S. Coast Guard.

Applicant: ALLEN & KIRMSE, LTD.

Bidder	Cash Payment	Price/Acre	Rental	Oil	Gas	Other



**Legend**  
13110067  
Blocks



0 2,000 Feet

CAMERON PARISH

WEST CAMERON AREA, REVISED

WC0026

P.O.B.

GULF OF MEXICO

25

**TRACT 43575 - Portion of Block 75, Main Pass Area, Revised, Plaquemines Parish, Louisiana**

The beds and bottoms of all water bodies belonging to the State of Louisiana located in Block 75, Main Pass Area, Revised, together with any present lands formed by accretion to the shoreline or islands formed therein, located in Plaquemines Parish, Louisiana, owned by and not presently under mineral lease as of November 13, 2013, from the State of Louisiana, the geographical area of which is more fully described as follows: Beginning at a point on the North line of Block 75, Main Pass Area, Revised, having Coordinates of X = 2,759,570.50 and Y = 214,972.00; thence East 2,137.50 feet along the North line of said Block 75 to the Northwest corner of State Lease No. 20909 having Coordinates of X = 2,761,708.00 and Y = 214,972.00; thence South 5,298.31 feet along the West line of said State Lease No. 20909 to a point being its Southwest corner having Coordinates of X = 2,761,708.00 and Y = 209,673.69; thence along the boundary of said State Lease No. 20909 the following courses: North 60 degrees 44 minutes 06 seconds East 458.99 feet to a point having Coordinates of X = 2,762,108.41 and Y = 209,898.06; North 46 degrees 53 minutes 26 seconds East 252.08 feet to a point having Coordinates of X = 2,762,292.44 and Y = 210,070.33; and South 71 degrees 45 minutes 32 seconds East 1,279.88 feet to a point on the East line of said Block 75, having Coordinates of X = 2,763,508.00 and Y = 209,669.71; thence South 6,390.68 feet along East line of said Block 75, to a point having Coordinates of X = 2,763,508.00 and Y = 203,279.03; thence West 2,416.13 feet to a point having Coordinates of X = 2,761,091.87 and Y = 203,279.03; thence North 1,053.00 feet to a point having Coordinates of X = 2,761,091.87 and Y = 204,332.03; thence North 43 degrees 31 minutes 18 seconds West 2,257.56 feet to a point having Coordinates of X = 2,759,537.25 and Y = 205,969.02; thence North 6,109.17 feet to a point having Coordinates of X = 2,759,537.25 and Y = 212,078.18; thence North 89 degrees 59 minutes 18 seconds East 33.25 feet to a point having Coordinates of X = 2,759,570.50 and Y = 212,078.19; thence North 2,893.81 feet the point of beginning, containing approximately **785.77 acres**, all as more particularly outlined on a plat on file in the Office of Mineral Resources, Department of Natural Resources. All bearings, distances and coordinates are based on Louisiana Coordinate System of 1927, (North or South Zone).

NOTE: The above description of the Tract nominated for lease has been provided and corrected, where required, exclusively by the nomination party. Any mineral lease selected from this Tract and awarded by the Louisiana State Mineral and Energy Board shall be without warranty of any kind, either express, implied, or statutory, including, but not limited to, the implied warranties of merchantability and fitness for a particular purpose. Should the mineral lease awarded by the Louisiana State Mineral and Energy Board be subsequently modified, cancelled or abrogated due to the existence of conflicting leases, operating agreements, private claims or other future obligations or conditions which may affect all or any portion of the leased Tract, it shall not relieve the Lessee of the

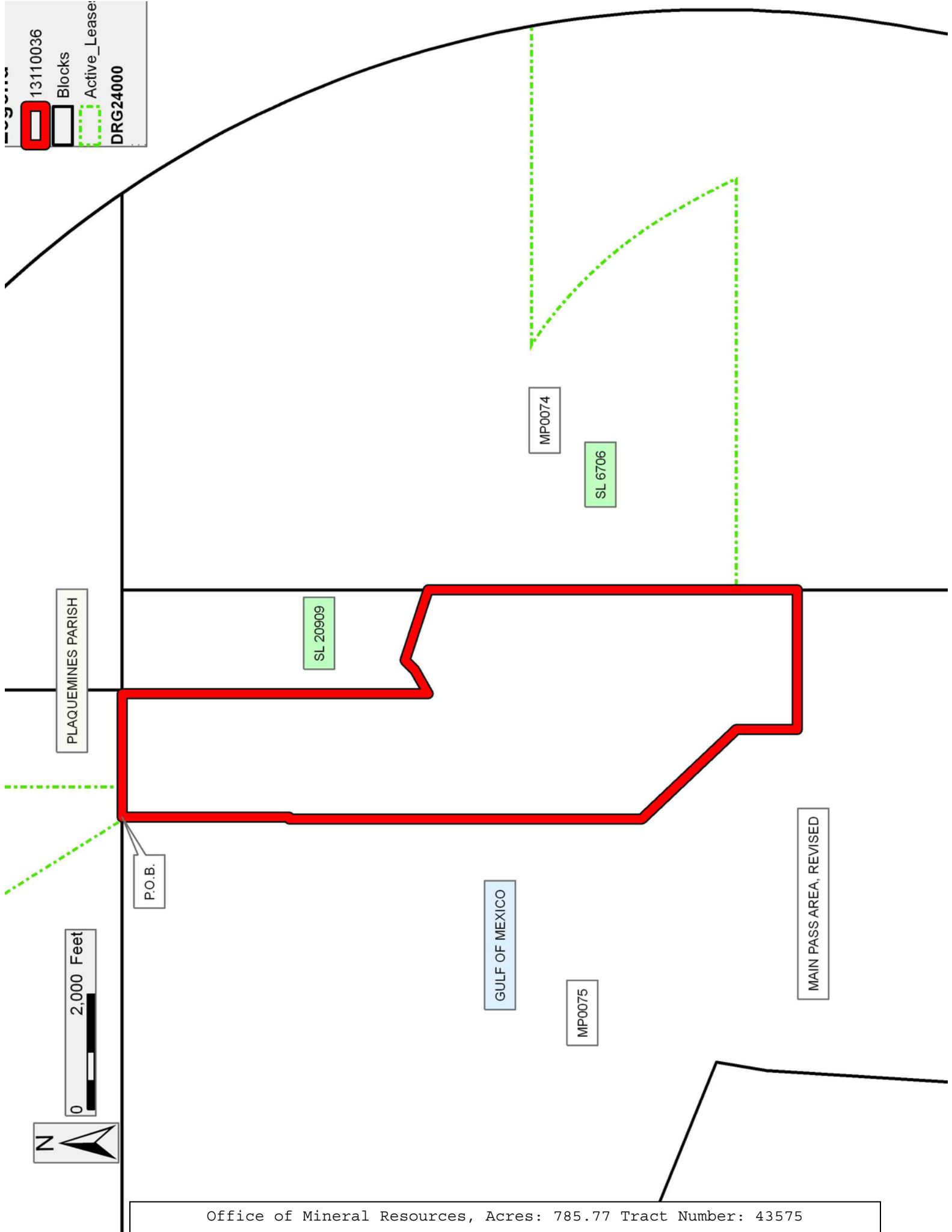
obligation to pay any bonus due thereon to the Louisiana State Mineral and Energy Board, nor shall the Louisiana State Mineral and Energy Board be obligated to refund any consideration paid by the Lessor prior to such modification, cancellation, or abrogation, including, but not limited to, bonuses, rentals and royalties.

NOTE: The State of Louisiana does hereby reserve, and this lease shall be subject to, the imprescriptible right of surface use in the nature of a servitude in favor of the Department of Natural Resources, including its Offices and Commissions, for the sole purpose of implementing, constructing, servicing and maintaining approved coastal zone management and/or restoration projects. Utilization of any and all rights derived under this lease by the mineral lessee, its agents, successors or assigns, shall not interfere with nor hinder the reasonable surface use by the Department of Natural Resources, its Offices or Commissions, as herein above reserved.

Applicant: JIL EXPLORATION, INC.

Bidder	Cash Payment	Price/Acre	Rental	Oil	Gas	Other

13110036  
 Blocks  
 Active\_Lease:  
 DRG24000



**TRACT 43576 - Portion of Block 77, Main Pass Area, Revised, Plaquemines Parish, Louisiana**

The beds and bottoms of all water bodies belonging to the State of Louisiana located in Block 77, Main Pass Area, Revised, together with any present lands formed by accretion to the shoreline or islands formed therein, located in Plaquemines Parish, Louisiana, owned by and not presently under mineral lease as of November 13, 2013, from the State of Louisiana, the geographical area of which is more fully described as follows: Beginning at a the Southeast corner of State Lease No. 21076 having Coordinates of X = 2,766,498.00 and Y = 195,895.55; thence along the boundary of said State Lease No. 21076 the following courses: North 2,915.00 feet to a point having Coordinates of X = 2,766,498.00 and Y = 198,810.55 and West 2,990.00 feet to a point on the West line of Block 77, Main Pass Area, Revised having Coordinates of X = 2,763,508.00 and Y = 198,810.55; thence North 1,403.45 feet along the West line of said Block 77 to its Northwest corner, said corner also being the Southwest corner of Block 74, Main Pass Area, Revised, having Coordinates of X = 2,763,508.00 and Y = 200,214.00; thence East 9,551.62 feet to a point on the Three Mile Line, as decreed by the Supreme Court of the United States, as determined by a Special Master appointed therein, in litigation styled *United States v. State of Louisiana et al No. 9 Original*, in 1975, having Coordinates of X = 2,773,059.62 and Y = 200,214.00; thence along an arc with a radius of 18,240.60 feet and a center of X = 2,754,100 and Y = 203,815 to a point having Coordinates of X = 2,771,609.85 and Y = 195,895.55; thence West 5,111.85 feet to point of beginning, containing **684.94 acres, LESS AND EXCEPT** that portion thereof, if any, lying seaward of the line three nautical miles from the coast line of Louisiana, as said three mile line has been decreed by the Supreme Court of the United States, as determined by a Special Master appointed therein, in litigation styled **United States v. State of Louisiana et al No. 9 Original**, in 1975, all as more particularly outlined on a plat in the Office of Mineral Resources, Department of Natural Resources. All bearings, distances and coordinates are based on the Louisiana Coordinate System of 1927, (South Zone).

NOTE: The above description of the Tract nominated for lease has been provided and corrected, where required, exclusively by the nomination party. Any mineral lease selected from this Tract and awarded by the Louisiana State Mineral and Energy Board shall be without warranty of any kind, either express, implied, or statutory, including, but not limited to, the implied warranties of merchantability and fitness for a particular purpose. Should the mineral lease awarded by the Louisiana State Mineral and Energy Board be subsequently modified, cancelled or abrogated due to the existence of conflicting leases, operating agreements, private claims or other future obligations or conditions which may affect all or any portion of the leased Tract, it shall not relieve the Lessee of the obligation to pay any bonus due thereon to the Louisiana State Mineral and Energy Board, nor shall the Louisiana State Mineral and Energy Board be obligated to refund any consideration paid by the Lessor prior to such

modification, cancellation, or abrogation, including, but not limited to, bonuses, rentals and royalties.

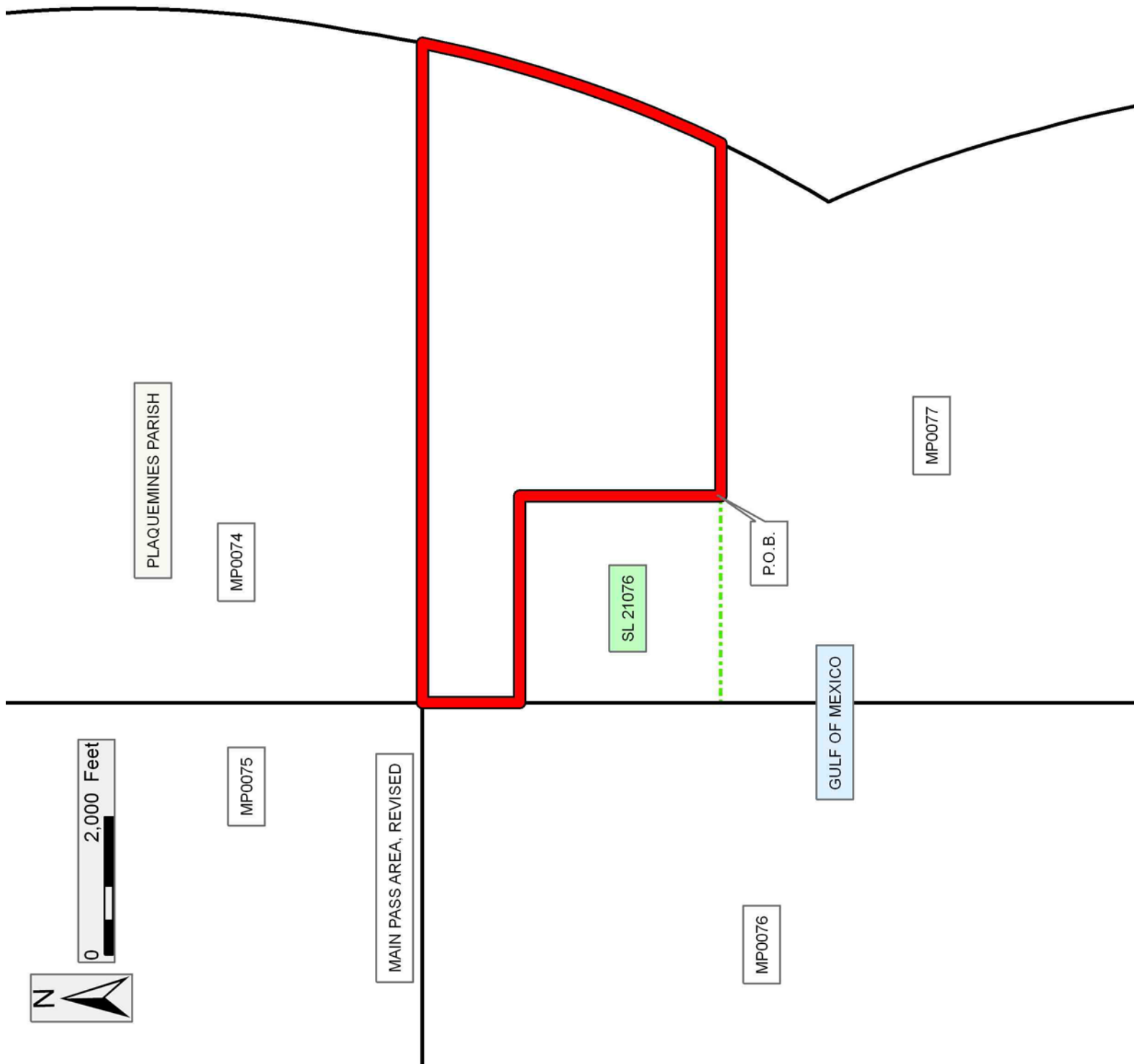
NOTE: The State of Louisiana does hereby reserve, and this lease shall be subject to, the imprescriptible right of surface use in the nature of a servitude in favor of the Department of Natural Resources, including its Offices and Commissions, for the sole purpose of implementing, constructing, servicing and maintaining approved coastal zone management and/or restoration projects. Utilization of any and all rights derived under this lease by the mineral lessee, its agents, successors or assigns, shall not interfere with nor hinder the reasonable surface use by the Department of Natural Resources, its Offices or Commissions, as herein above reserved.

Applicant: JIL EXPLORATION, INC.

Bidder	Cash Payment	Price/Acre	Rental	Oil	Gas	Other

Legend

- 13110024 (Red outline)
- Blocks (Black outline)
- Active\_Lease (Green dashed outline)



**TRACT 43577 - Portion of Block 76, Main Pass Area, Revised, Plaquemines Parish, Louisiana**

The beds and bottoms of all water bodies belonging to the State of Louisiana located in Block 76, Main Pass Area, Revised, together with any present lands formed by accretion to the shoreline or islands formed therein, located in Plaquemines Parish, Louisiana, owned by and not presently under mineral lease as of November 13, 2013, from the State of Louisiana, the geographical area of which is more fully described as follows: Beginning at a point on the North line of Block 76, Main Pass Area, Revised having Coordinates of X = 2,754,948.30 and Y = 200,214.00; thence along the boundary of said Block 76 the following courses: East 8,559.70 feet to a point having Coordinates of X = 2,763,508.00 and Y = 200,214.00 and South 1,588.11 feet to the Northeast corner of State Lease No. 13287 having Coordinates of X = 2,763,508.00 and Y = 198,625.89; thence along the boundary of said State Lease No. 13287 the following courses: North 71 degrees 21 minutes 02 seconds West 3,377.33 feet to a point having Coordinates of X = 2,760,308.00 and Y = 199,705.88 and South 00 degrees 00 minutes 01 seconds East 1,337.48 feet to the Northwest corner of State Lease No. 15042 having Coordinates of X = 2,760,308.01 and Y = 198,368.40; thence South 3,422.38 feet along the West line of said State Lease No. 15042 to its Southwest corner having Coordinates of X = 2,760,308.00 and Y = 194,946.02; thence West 5,695.73 feet to a point on the Louisiana Coastline, as decreed by the Supreme Court of the United States, as determined by a Special Master appointed therein, in litigation styled *United States v. State of Louisiana et al No. 9 Original*, in 1975, having Coordinates of X = 2,754,612.27 and Y = 194,946.02; thence Northeasterly along said Coastline on a straight line to the point of beginning, containing **745.50 acres**, all as more particularly outlined on a plat on file in the Office of Mineral Resources, Department of Natural Resources. All bearings, distances and coordinates are based on Louisiana Coordinate System of 1927, (North or South Zone).

NOTE: The above description of the Tract nominated for lease has been provided and corrected, where required, exclusively by the nomination party. Any mineral lease selected from this Tract and awarded by the Louisiana State Mineral and Energy Board shall be without warranty of any kind, either express, implied, or statutory, including, but not limited to, the implied warranties of merchantability and fitness for a particular purpose. Should the mineral lease awarded by the Louisiana State Mineral and Energy Board be subsequently modified, cancelled or abrogated due to the existence of conflicting leases, operating agreements, private claims or other future obligations or conditions which may affect all or any portion of the leased Tract, it shall not relieve the Lessee of the obligation to pay any bonus due thereon to the Louisiana State Mineral and Energy Board, nor shall the Louisiana State Mineral and Energy Board be obligated to refund any consideration paid by the Lessor prior to such modification, cancellation, or abrogation, including, but not limited to, bonuses, rentals and royalties.



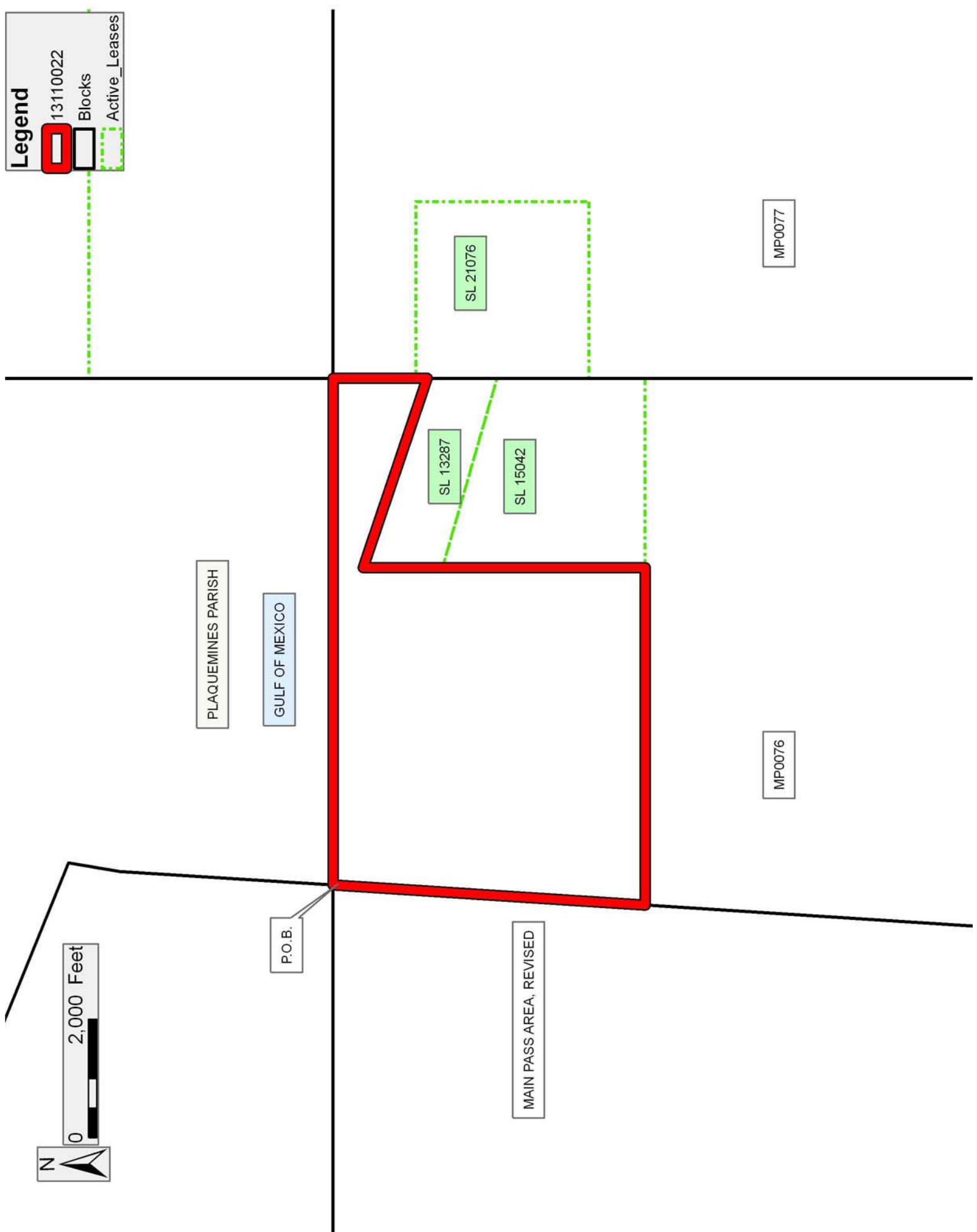
NOTE: The State of Louisiana does hereby reserve, and this lease shall be subject to, the imprescriptible right of surface use in the nature of a servitude in favor of the Department of Natural Resources, including its Offices and Commissions, for the sole purpose of implementing, constructing, servicing and maintaining approved coastal zone management and/or restoration projects. Utilization of any and all rights derived under this lease by the mineral lessee, its agents, successors or assigns, shall not interfere with nor hinder the reasonable surface use by the Department of Natural Resources, its Offices or Commissions, as herein above reserved.

Applicant: JIL EXPLORATION, INC.

Bidder	Cash Payment	Price/Acre	Rental	Oil	Gas	Other

**Legend**

- 13110022
- Blocks
- Active\_Leases



**TRACT 43578 - Portion of Block 77, Main Pass Area, Revised, Plaquemines Parish, Louisiana**

The beds and bottoms of all water bodies belonging to the State of Louisiana located in Block 77, Main Pass Area, Revised, together with any present lands formed by accretion to the shoreline or islands formed therein, located in Plaquemines Parish, Louisiana, owned by and not presently under mineral lease as of November 13, 2013, from the State of Louisiana, the geographical area of which is more fully described as follows: Beginning at a the Southwest corner of Block 77, Main Pass Area, Revised having Coordinates of X = 2,763,508.00 and Y = 185,456.00; thence North 10,439.55 feet to the Southwest corner of State Lease No. 21076 having Coordinates of X = 2,763,508.00 and Y = 195,895.55; thence East 2,990.00 feet along the South line of said State Lease No. 21076 to its Southeast corner having Coordinates of X = 2,766,498.00 and Y = 195,895.55; thence East 5,111.85 feet to a point on the Three Mile Line, as decreed by the Supreme Court of the United States, as determined by a Special Master appointed therein, in litigation styled *United States v. State of Louisiana et al No. 9 Original*, in 1975, having Coordinates of X = 2,771,609.85 and Y = 195,895.55; thence along the boundary of said Three Mile Decree Line the following courses: Southwesterly along an arc with a radius of 18,240.60 feet and a center of X = 2,755,178 and Y = 203,815 to a point having Coordinates of X = 2,770,763 and Y = 194,337; Southeasterly along an arc with a radius of 18,240.60 feet and a center of X = 2,754,100 and Y = 186,915 to a point having Coordinates of X = 2,771,780 and Y = 191,404; and Southeasterly along an arc with a radius of 18,240.60 feet and a center of X = 2,754,263 and Y = 186,316 to a point having Coordinates of X = 2,772,483.17 and Y = 185,456.00; thence West 8,975.17 feet to point of beginning, containing **2,001.44 acres, LESS AND EXCEPT** that portion thereof, if any, lying seaward of the line three nautical miles from the coast line of Louisiana, as said three mile line has been decreed by the Supreme Court of the United States, as determined by a Special Master appointed therein, in litigation styled **United States v. State of Louisiana et al No. 9 Original**, in 1975, all as more particularly outlined on a plat in the Office of Mineral Resources, Department of Natural Resources. All bearings, distances and coordinates are based on the Louisiana Coordinate System of 1927, (South Zone).

NOTE: The above description of the Tract nominated for lease has been provided and corrected, where required, exclusively by the nomination party. Any mineral lease selected from this Tract and awarded by the Louisiana State Mineral and Energy Board shall be without warranty of any kind, either express, implied, or statutory, including, but not limited to, the implied warranties of merchantability and fitness for a particular purpose. Should the mineral lease awarded by the Louisiana State Mineral and Energy Board be subsequently modified, cancelled or abrogated due to the existence of conflicting leases, operating agreements, private claims or other future obligations or conditions which may affect all or any portion of the leased Tract, it shall not relieve the Lessee of the obligation to pay any bonus due thereon to the Louisiana State Mineral and




Energy Board, nor shall the Louisiana State Mineral and Energy Board be obligated to refund any consideration paid by the Lessor prior to such modification, cancellation, or abrogation, including, but not limited to, bonuses, rentals and royalties.

NOTE: The State of Louisiana does hereby reserve, and this lease shall be subject to, the imprescriptible right of surface use in the nature of a servitude in favor of the Department of Natural Resources, including its Offices and Commissions, for the sole purpose of implementing, constructing, servicing and maintaining approved coastal zone management and/or restoration projects. Utilization of any and all rights derived under this lease by the mineral lessee, its agents, successors or assigns, shall not interfere with nor hinder the reasonable surface use by the Department of Natural Resources, its Offices or Commissions, as herein above reserved.

Applicant: JIL EXPLORATION, INC.

Bidder	Cash Payment	Price/Acre	Rental	Oil	Gas	Other

**Legend**

-  13110025
-  Blocks
-  Active\_Leases



**TRACT 43579 - Portion of Block 76, Main Pass Area, Revised, Plaquemines Parish, Louisiana**

The beds and bottoms of all water bodies belonging to the State of Louisiana located in Block 76, Main Pass Area, Revised, together with any present lands formed by accretion to the shoreline or islands formed therein, located in Plaquemines Parish, Louisiana, owned by and not presently under mineral lease as of November 13, 2013, from the State of Louisiana, the geographical area of which is more fully described as follows: Beginning at a the Southeast corner of Block 76, Main Pass Area, Revised having Coordinates of X = 2,763,508.00 and Y = 185,456.00; thence West 9,358.82 feet along the South line of said Block 76 to a point on the Louisiana Coastline, as decreed by the Supreme Court of the United States, as determined by a Special Master appointed therein, in litigation styled *United States v. State of Louisiana et al No. 9 Original*, in 1975, having Coordinates of X = 2,754,149.18 and Y = 185,456.00; thence along the boundary of said Coastline the following courses: Northeasterly on a straight line to a point having Coordinates of X = 2,754,263 and Y = 186,316, Northwesterly on a straight line to a point having Coordinates of X = 2,754,100 and Y = 186,915, and Northeasterly on a straight line to a point having Coordinates of X = 2,754,612.27 and Y = 194,946.02; thence East 5,695.73 feet to the Southwest corner of State Lease No. 15042 having Coordinates of X = 2,760,308.00 and Y = 194,946.02; thence East 3,200.00 feet along the South line of said State Lease No. 15042 to a point on the East line of said Block 76 having Coordinates of X = 2,763,508.00 and Y = 194,946.02; thence South 9,490.02 feet along the East line of said Block 76 to the Point of Beginning, containing **1,999.20 acres**, all as more particularly outlined on a plat on file in the Office of Mineral Resources, Department of Natural Resources. All bearings, distances and coordinates are based on Louisiana Coordinate System of 1927, (North or South Zone).

NOTE: The above description of the Tract nominated for lease has been provided and corrected, where required, exclusively by the nomination party. Any mineral lease selected from this Tract and awarded by the Louisiana State Mineral and Energy Board shall be without warranty of any kind, either express, implied, or statutory, including, but not limited to, the implied warranties of merchantability and fitness for a particular purpose. Should the mineral lease awarded by the Louisiana State Mineral and Energy Board be subsequently modified, cancelled or abrogated due to the existence of conflicting leases, operating agreements, private claims or other future obligations or conditions which may affect all or any portion of the leased Tract, it shall not relieve the Lessee of the obligation to pay any bonus due thereon to the Louisiana State Mineral and Energy Board, nor shall the Louisiana State Mineral and Energy Board be obligated to refund any consideration paid by the Lessor prior to such modification, cancellation, or abrogation, including, but not limited to, bonuses, rentals and royalties.

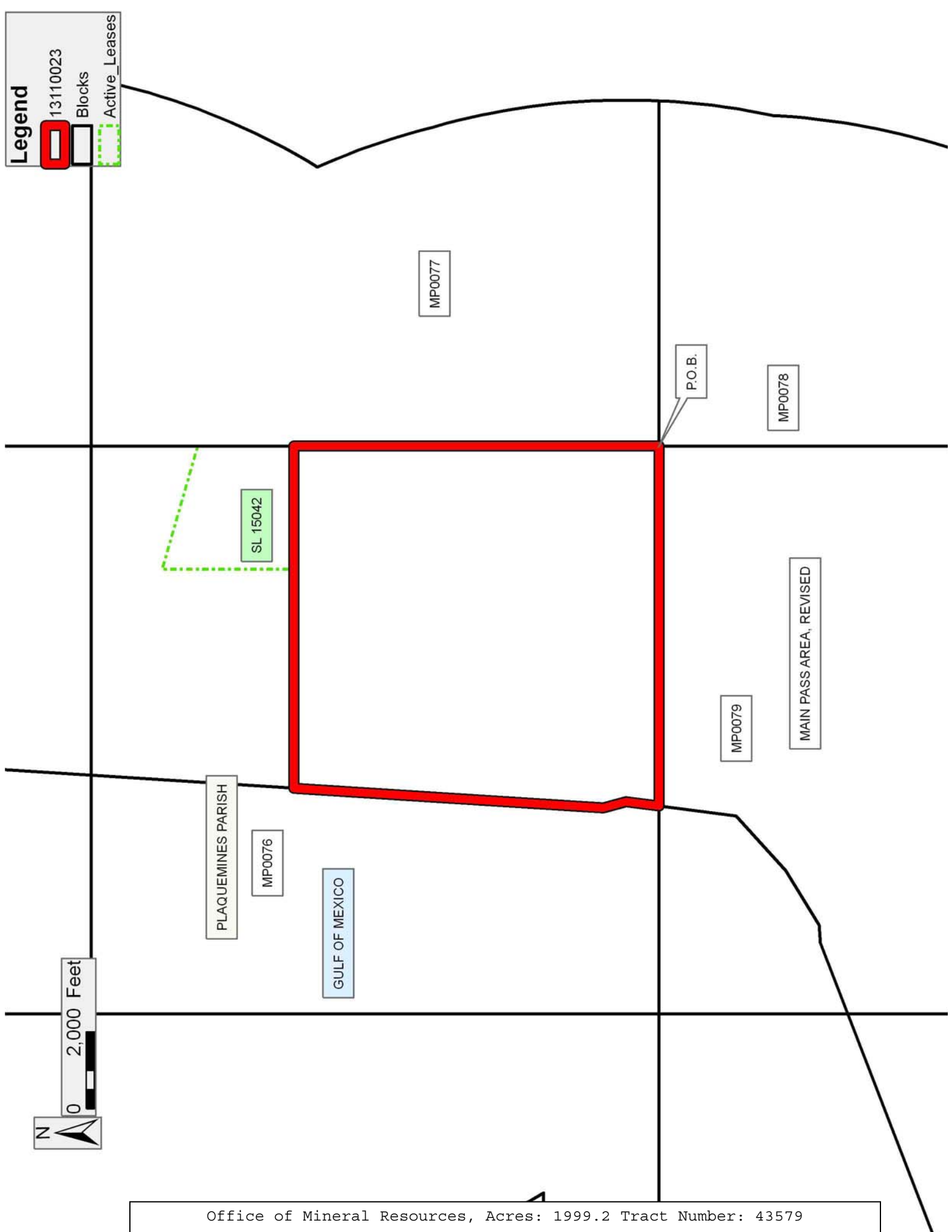
NOTE: The State of Louisiana does hereby reserve, and this lease shall be subject to, the imprescriptible right of surface use in the nature of a servitude in favor of the Department of Natural Resources, including its Offices and Commissions, for the sole purpose of implementing, constructing, servicing and maintaining approved coastal zone management and/or restoration projects. Utilization of any and all rights derived under this lease by the mineral lessee, its agents, successors or assigns, shall not interfere with nor hinder the reasonable surface use by the Department of Natural Resources, its Offices or Commissions, as herein above reserved.

Applicant: JIL EXPLORATION, INC.

Bidder	Cash Payment	Price/Acre	Rental	Oil	Gas	Other

**Legend**

- 13110023
- Blocks
- Active\_Leases





**TRACT 43580 - Portion of Block 1, Bay Marchand Area, Blocks 14, and 25, Grand Isle Area, Jefferson and Lafourche Parishes, Louisiana**

The beds and bottoms of all water bodies belonging to the State of Louisiana located in Block 1, Bay Marchand Area, Blocks 14, and 25, Grand Isle Area, together with any present lands formed by accretion to the shoreline or islands formed therein, located in Jefferson and Lafourche Parishes, Louisiana, owned by and not presently under mineral lease as of November 13, 2013, from the State of Louisiana, the geographical area of which is more fully described as follows: Beginning at the Southeast corner of Block 14, Grand Isle Area, having Coordinates of X = 2,398,627.73 and Y = 170,777.35; thence West 13,400.00 feet along the South line of said Block 14 to its Southwest corner having Coordinates of X = 2,385,227.73 and Y = 170,777.35; thence North 30 degrees 07 minutes 14 seconds West 563.07 feet along the West line of said Block 14 to a point on the Louisiana Coastline, as decreed by the Supreme Court of the United States, as determined by a Special Master appointed therein, in litigation styled *United States v. State of Louisiana et al No. 9 Original*, in 1975, having Coordinates of X = 2,384,945.17 and Y = 171,264.39; thence along said Coastline the following: Northeasterly on a straight line to a point having Coordinates of X = 2,385,833 and Y = 171,938; Northeasterly on a straight line to a point having Coordinates of X = 2,393,610 and Y = 178,130; Northeasterly on a straight line to a point having Coordinates of X = 2,398,175 and Y = 182,359 and Northeasterly on a straight line to the Northeast corner of said Block 14 having Coordinates of X = 2,398,627.73 and Y = 182,742.07; thence South 11,964.72 feet along the East line of said Block 14 to the point of beginning, containing **1,889.67 acres**, all as more particularly outlined on a plat on file in the Office of Mineral Resources, Department of Natural Resources. All bearings, distances and coordinates are based on Louisiana Coordinate System of 1927, (North or South Zone).

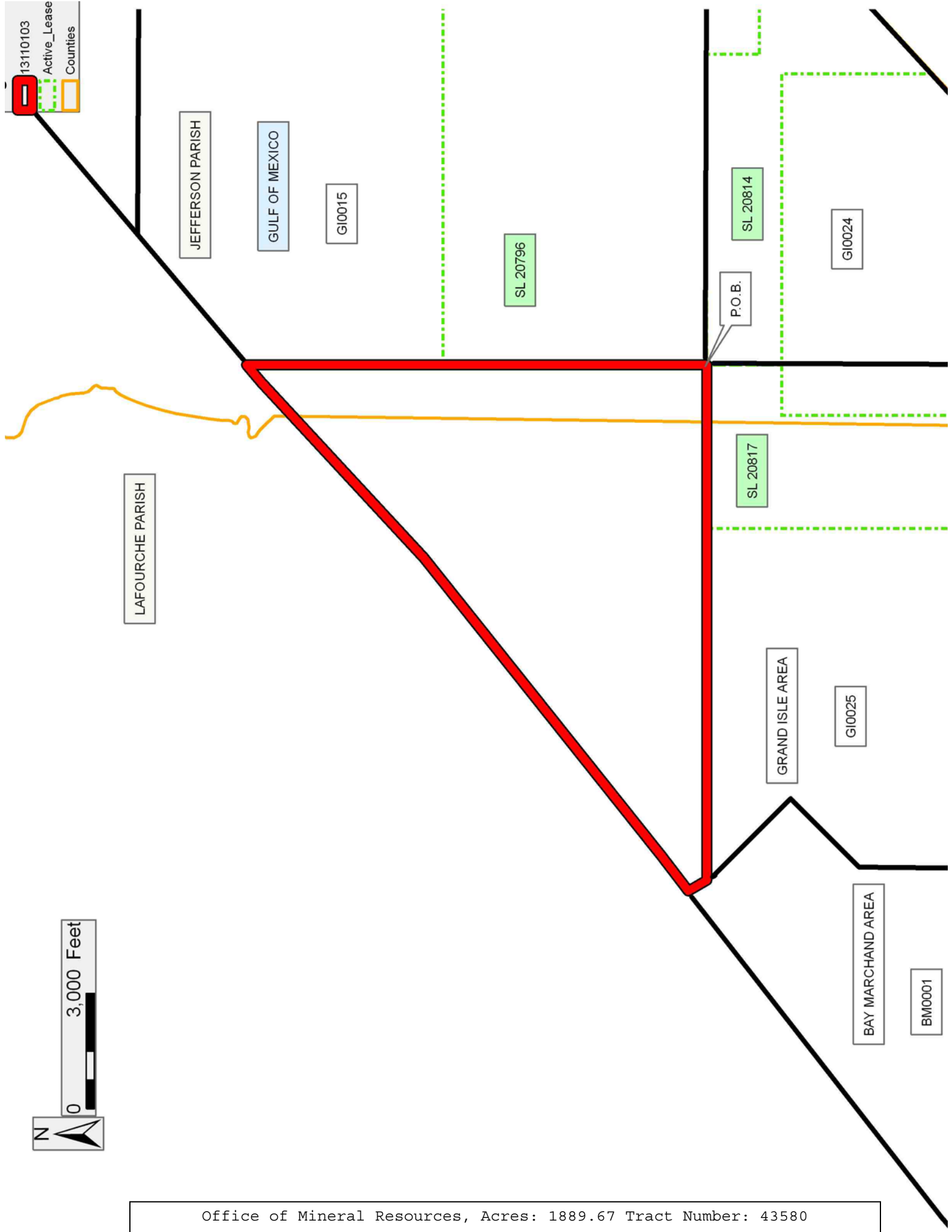
NOTE: The above description of the Tract nominated for lease has been provided and corrected, where required, exclusively by the nomination party. Any mineral lease selected from this Tract and awarded by the Louisiana State Mineral and Energy Board shall be without warranty of any kind, either express, implied, or statutory, including, but not limited to, the implied warranties of merchantability and fitness for a particular purpose. Should the mineral lease awarded by the Louisiana State Mineral and Energy Board be subsequently modified, cancelled or abrogated due to the existence of conflicting leases, operating agreements, private claims or other future obligations or conditions which may affect all or any portion of the leased Tract, it shall not relieve the Lessee of the obligation to pay any bonus due thereon to the Louisiana State Mineral and Energy Board, nor shall the Louisiana State Mineral and Energy Board be obligated to refund any consideration paid by the Lessor prior to such modification, cancellation, or abrogation, including, but not limited to, bonuses, rentals and royalties.

NOTE: The State of Louisiana does hereby reserve, and this lease shall be subject to, the imprescriptible right of surface use in the nature of a servitude in favor of the Department of Natural Resources, including its Offices and Commissions, for the sole purpose of implementing, constructing, servicing and maintaining approved coastal zone management and/or restoration projects. Utilization of any and all rights derived under this lease by the mineral lessee, its agents, successors or assigns, shall not interfere with nor hinder the reasonable surface use by the Department of Natural Resources, its Offices or Commissions, as herein above reserved.

Applicant: KARE-SUE ENERGY, INC.

Bidder	Cash Payment	Price/Acre	Rental	Oil	Gas	Other

13110103  
Active\_Lease  
Counties



**TRACT 43581 - Portion of Blocks 6, and 7, South Pass Area, Plaquemines Parish, Louisiana**

The beds and bottoms of all water bodies belonging to the State of Louisiana located in Blocks 6, and 7, South Pass Area, together with any present lands formed by accretion to the shoreline or islands formed therein, located in Plaquemines Parish, Louisiana, owned by and not presently under mineral lease as of November 13, 2013, from the State of Louisiana, the geographical area of which is more fully described as follows: Beginning at a point on the Three Mile Line, as decreed by the Supreme Court of the United States, as determined by a Special Master appointed therein, in litigation styled *United States v. State of Louisiana et al No. 9 Original*, in 1975, having Coordinates of X = 2,747,214.05 and Y = 160,711.30; thence West 11,879.95 feet to the Northeast corner of State Lease No. 20989 having Coordinates of X = 2,735,334.10 and Y = 160,711.30; thence South 77 degrees 14 minutes 04 seconds West 2,185.62 feet along North line of said State Lease No. 20989 to a point on the Eastern boundary of Pass-A-Loutre Wildlife Management Area having Coordinates of X = 2,733,202.50 and Y = 160,228.36; thence North 27 degrees 15 minutes 54 seconds East 9,924.73 feet along the Eastern boundary of said Pass-A-Loutre Wildlife Management Area to a point having Coordinates of X = 2,737,749.07 and Y = 169,050.44; thence East 11,000.93 feet to a point on the East line of Block 6, South Pass Area having Coordinates of X = 2,748,750.00 and Y = 169,050.44; thence South 6,809.59 feet along the East line of said Block 6 to a point on the said Three Mile Decree having Coordinates of X = 2,748,750.00 and Y = 162,241.85; thence along the boundary of said Three Mile Decree the following courses: Southwesterly along an arc with a radius of 18,240.60 feet and a center of X = 2,736,662 and Y = 175,902 to a point having Coordinates of X = 2,748,316 and Y = 161,869; Southwesterly along an arc with a radius of 18,240.60 and a center of X = 2,734,720 and Y = 174,030 to a point having Coordinates of X = 2,747,824 and Y = 161,341; and Southwesterly Southwesterly along a straight line to the point of beginning, containing **2,500.00 acres, LESS AND EXCEPT** that portion thereof, if any, lying seaward of the line three nautical miles from the coast line of Louisiana, as said three mile line has been decreed by the Supreme Court of the United States, as determined by a Special Master appointed therein, in litigation styled **United States v. State of Louisiana et al No. 9 Original**, in 1975, all as more particularly outlined on a plat in the Office of Mineral Resources, Department of Natural Resources. All bearings, distances and coordinates are based on the Louisiana Coordinate System of 1927, (South Zone).

NOTE: The above description of the Tract nominated for lease has been provided and corrected, where required, exclusively by the nomination party. Any mineral lease selected from this Tract and awarded by the Louisiana State Mineral and Energy Board shall be without warranty of any kind, either express, implied, or statutory, including, but not limited to, the implied warranties of merchantability and fitness for a particular purpose. Should the mineral lease awarded by the Louisiana State Mineral

and Energy Board be subsequently modified, cancelled or abrogated due to the existence of conflicting leases, operating agreements, private claims or other future obligations or conditions which may affect all or any portion of the leased Tract, it shall not relieve the Lessee of the obligation to pay any bonus due thereon to the Louisiana State Mineral and Energy Board, nor shall the Louisiana State Mineral and Energy Board be obligated to refund any consideration paid by the Lessor prior to such modification, cancellation, or abrogation, including, but not limited to, bonuses, rentals and royalties.

NOTE: The State of Louisiana does hereby reserve, and this lease shall be subject to, the imprescriptible right of surface use in the nature of a servitude in favor of the Department of Natural Resources, including its Offices and Commissions, for the sole purpose of implementing, constructing, servicing and maintaining approved coastal zone management and/or restoration projects. Utilization of any and all rights derived under this lease by the mineral lessee, its agents, successors or assigns, shall not interfere with nor hinder the reasonable surface use by the Department of Natural Resources, its Offices or Commissions, as herein above reserved.

Applicant: JIL EXPLORATION, INC.

Bidder	Cash Payment	Price/Acre	Rental	Oil	Gas	Other

13110002

- Wildlife
- Blocks
- Active\_Leases

