

TRACT 43589 - East Feliciana and St. Helena Parishes, Louisiana

All of the lands now or formerly constituting the beds and bottoms of all water bodies of every nature and description as to which title is vested in the State of Louisiana, together with all islands arising therein and other lands formed by accretion or by reliction, where allowed by law, excepting tax adjudicated lands, and not presently under mineral lease on November 13, 2013, situated in East Feliciana and St. Helena Parishes, Louisiana, and more particularly described as follows: Beginning at a point having Coordinates of X = 2,156,030.16 and Y = 848,592.09; thence East 3,255.21 feet to a point having Coordinates of X = 2,159,285.37 and Y = 848,592.09; thence South 2,864.58 feet to a point having Coordinates of X = 2,159,285.37 and Y = 845,727.50; thence West 3,255.21 feet to a point having Coordinates of X = 2,156,030.16 and Y = 845,727.50; thence North 2,864.58 feet to the point of beginning, containing approximately **14 acres**, all as more particularly outlined on a plat on file in the Office of Mineral Resources, Department of Natural Resources. All bearings, distances and coordinates are based on Louisiana Coordinate System of 1927, (North or South Zone), where applicable.

NOTE: The above description of the Tract nominated for lease has been provided and corrected, where required, exclusively by the nomination party. Any mineral lease selected from this Tract and awarded by the Louisiana State Mineral and Energy Board shall be without warranty of any kind, either express, implied, or statutory, including, but not limited to, the implied warranties of merchantability and fitness for a particular purpose. Should the mineral lease awarded by the Louisiana State Mineral and Energy Board be subsequently modified, cancelled or abrogated due to the existence of conflicting leases, operating agreements, private claims or other future obligations or conditions which may affect all or any portion of the leased Tract, it shall not relieve the Lessee of the obligation to pay any bonus due thereon to the Louisiana State Mineral and Energy Board, nor shall the Louisiana State Mineral and Energy Board be obligated to refund any consideration paid by the Lessor prior to such modification, cancellation, or abrogation, including, but not limited to, bonuses, rentals and royalties.

NOTE: This tract is located in Sections 5 & 60 of T1S R4E in the North Chipola Oil & Gas Field, St. Helena, and E. Feliciana Parishes A portion of this tract is included in the Office of Conservation unit created for the Tuscaloosa Marine Shale (TMS) RA SUD Order 1555-A, Docket Number 13-346, effective date 7/16/13. This tract contains approximately 14 acres of claimable waterbottoms within the Amite River. The Weyerhaeuser 60H etal No.1 well, SN 243695 serves as the designated unit well and was tested at rate of 552 bopd and 2,300 mcf/d whereas the Weyerhaeuser 60H etal No. 2, SN 244934 will serve as the alternate unit well and was tested at rate 220 bopd and 85 mcf/d. Total production beginning February 2013 to June 2013 from both wells is 56,852 bbls and 29,308 mcf.

NOTE: The above Tract is located upon a restricted scenic river and all operations in this area must be conducted in strict conformity with the regulations of the Corps of Engineers, U.S. Army.

Applicant: STAFF OFFICE OF MINERAL RESOURCES

Bidder	Cash Payment	Price/Acre	Rental	Oil	Gas	Other

Legend

- 13110111
- Counties
- DOQQ2004



TRACT 43590 - Vernon Parish, Louisiana

All of the lands now or formerly constituting the beds and bottoms of all water bodies of every nature and description the title of which vests in the State of Louisiana, together with all islands arising therein and other lands formed by accretion or by reliction, where allowed by law, excepting tax adjudicated lands, and not presently under mineral lease on November 13, 2013, situated in Vernon Parish, Louisiana, and more particularly described as follows: Beginning at a point having Coordinates of X = 1,665,570.00 and Y = 107,210.00; thence East 18,480.00 feet to a point having Coordinates of X = 1,684,050.00 and Y = 107,210.00; thence South 8,545.15 feet to the Northeast corner of State Lease No. 20292, as amended, having Coordinates of X = 1,684,050.00 and Y = 98,664.85; thence along the North and West boundary of said State Lease No. 20292, as amended, as follows: North 89 degrees 24 minutes 16 seconds West 6,250.91 feet to a point having Coordinates of X = 1,677,799.43 and Y = 98,729.83, South 14 degrees 41 minutes 25 seconds West 136.02 feet, South 08 degrees 41 minutes 00 seconds East 552.91 feet, South 19 degrees 40 minutes 02 seconds East 468.74 feet, South 10 degrees 51 minutes 27 seconds East 352.72 feet, South 00 degrees 37 minutes 55 seconds West 279.57 feet, South 32 degrees 34 minutes 57 seconds West 163.23 feet to a point having Coordinates of X = 1,677,981.62 and Y = 96,846.79, South 00 degrees 45 minutes 57 seconds East 6,050.48 feet to a point having Coordinates of X = 1,678,062.47 and Y = 90,796.85 and South 00 degrees 06 minutes 15 seconds East 2,066.85 feet to a point having Coordinates of X = 1,678,066.24 and Y = 88,730.00; thence West 12,496.24 feet to a point having Coordinates of X = 1,665,570.00 and Y = 88,730.00; thence North 18,480.00 feet to the point of beginning, **LESS AND EXCEPT** any portion of the Clear Creek Wildlife Management Area which lies within the above described tract, containing approximately **158 acres**, **LESS AND EXCEPT** that portion thereof, if any, located West of the boundary line between the States of Texas and Louisiana as determined by the report of the Special Master and adjudicated by the Supreme Court of the United States in litigation styled **Texas v. Louisiana, et al No. 36 Original**, or as otherwise approved by said court, all as more particularly outlined on a plat on file in the Office of Mineral Resources, Department of Natural Resources. All bearings, distances and coordinates are based on Louisiana Coordinate System of 1927, (North or South Zone), where applicable.

NOTE: The above description of the Tract nominated for lease has been provided and corrected, where required, exclusively by the nomination party. Any mineral lease selected from this Tract and awarded by the Louisiana State Mineral and Energy Board shall be without warranty of any kind, either express, implied, or statutory, including, but not limited to, the implied warranties of merchantability and fitness for a particular purpose. Should the mineral lease awarded by the Louisiana State Mineral and Energy Board be subsequently modified, cancelled or abrogated due to the existence of conflicting leases, operating agreements, private claims or other future obligations or conditions which may affect all or any portion of the leased Tract, it shall not relieve the Lessee of the

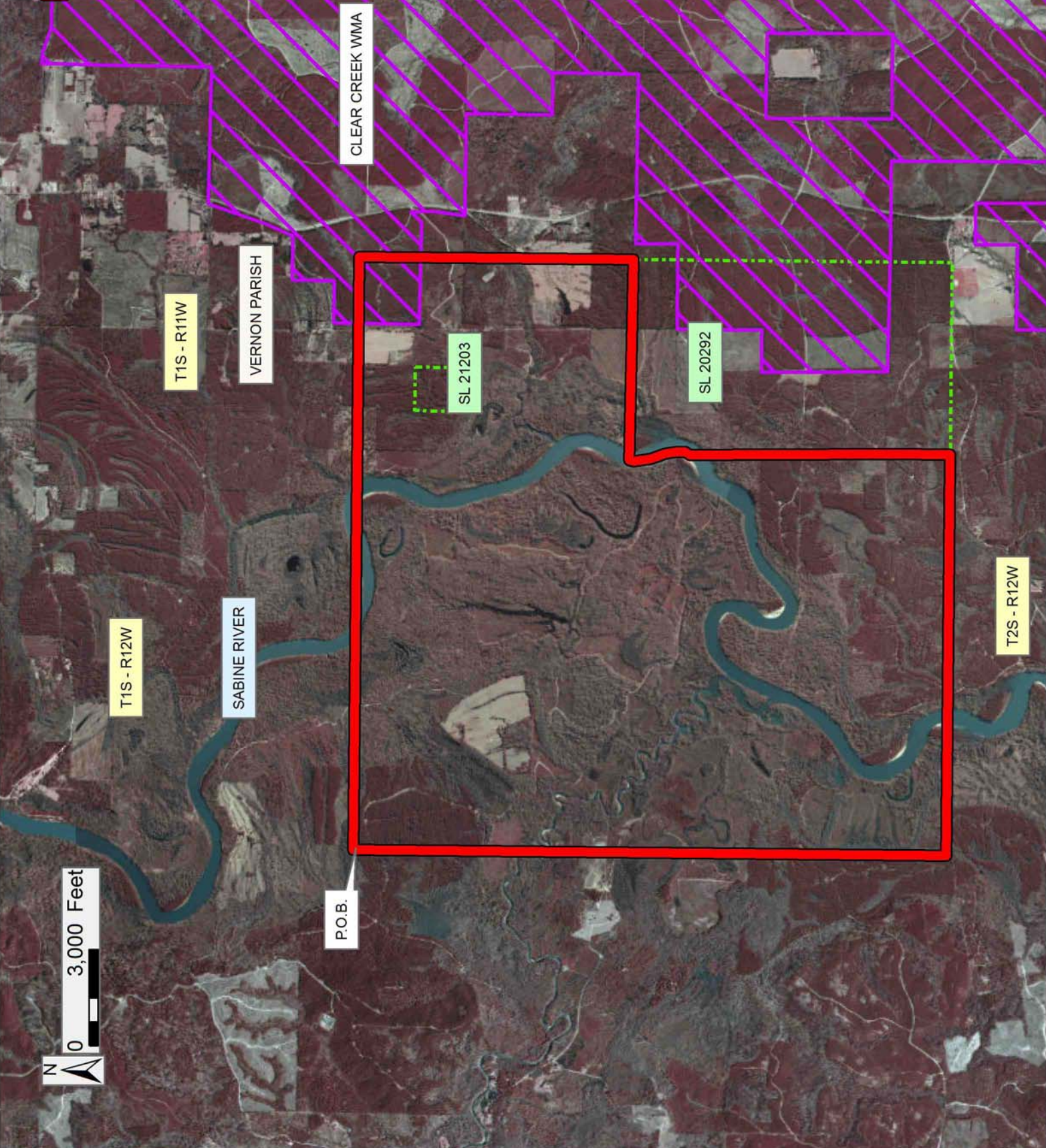
obligation to pay any bonus due thereon to the Louisiana State Mineral and Energy Board, nor shall the Louisiana State Mineral and Energy Board be obligated to refund any consideration paid by the Lessor prior to such modification, cancellation, or abrogation, including, but not limited to, bonuses, rentals and royalties.

Applicant: BASIN PROPERTIES, INC.

Bidder	Cash Payment	Price/Acre	Rental	Oil	Gas	Other

Legend

- 13110075
- Wildlife
- Active_Leases
- DOQQ2004



TRACT 43591 - Calcasieu and Jefferson Davis Parishes, Louisiana

All of the lands now or formerly constituting the beds and bottoms of all water bodies of every nature and description as to which title is vested in the State of Louisiana, together with all islands arising therein and other lands formed by accretion or by reliction, where allowed by law, excepting tax adjudicated lands, and not presently under mineral lease on November 13, 2013, situated in Calcasieu and Jefferson Davis Parishes, Louisiana, and more particularly described as follows: Beginning at a point having Coordinates of X = 1,443,377.68 and Y = 632,551.81; thence South 87 degrees 13 minutes 19 seconds East 5,329.72 feet to a point having Coordinates of X = 1,448,701.13 and Y = 632,293.50; thence South 00 degrees 21 minutes 06 seconds West 5,268.74 feet to a point having Coordinates of X = 1,448,668.79 and Y = 627,024.86; thence South 01 degrees 09 minutes 59 seconds West 2,646.77 feet to a point having Coordinates of X = 1,448,614.91 and Y = 624,378.64; thence North 89 degrees 00 minutes 48 seconds West 5,255.99 feet to a point having Coordinates of X = 1,443,359.69 and Y = 624,469.15; thence North 01 degrees 25 minutes 49 seconds East 2,680.22 feet to a point having Coordinates of X = 1,443,426.59 and Y = 627,148.53; thence North 00 degrees 31 minutes 07 seconds West 5,403.50 feet to the point of beginning, containing approximately **62 acres**, all as more particularly outlined on a plat on file in the Office of Mineral Resources, Department of Natural Resources. All bearings, distances and coordinates are based on Louisiana Coordinate System of 1927, (North or South Zone), where applicable.

NOTE: The above description of the Tract nominated for lease has been provided and corrected, where required, exclusively by the nomination party. Any mineral lease selected from this Tract and awarded by the Louisiana State Mineral and Energy Board shall be without warranty of any kind, either express, implied, or statutory, including, but not limited to, the implied warranties of merchantability and fitness for a particular purpose. Should the mineral lease awarded by the Louisiana State Mineral and Energy Board be subsequently modified, cancelled or abrogated due to the existence of conflicting leases, operating agreements, private claims or other future obligations or conditions which may affect all or any portion of the leased Tract, it shall not relieve the Lessee of the obligation to pay any bonus due thereon to the Louisiana State Mineral and Energy Board, nor shall the Louisiana State Mineral and Energy Board be obligated to refund any consideration paid by the Lessor prior to such modification, cancellation, or abrogation, including, but not limited to, bonuses, rentals and royalties.

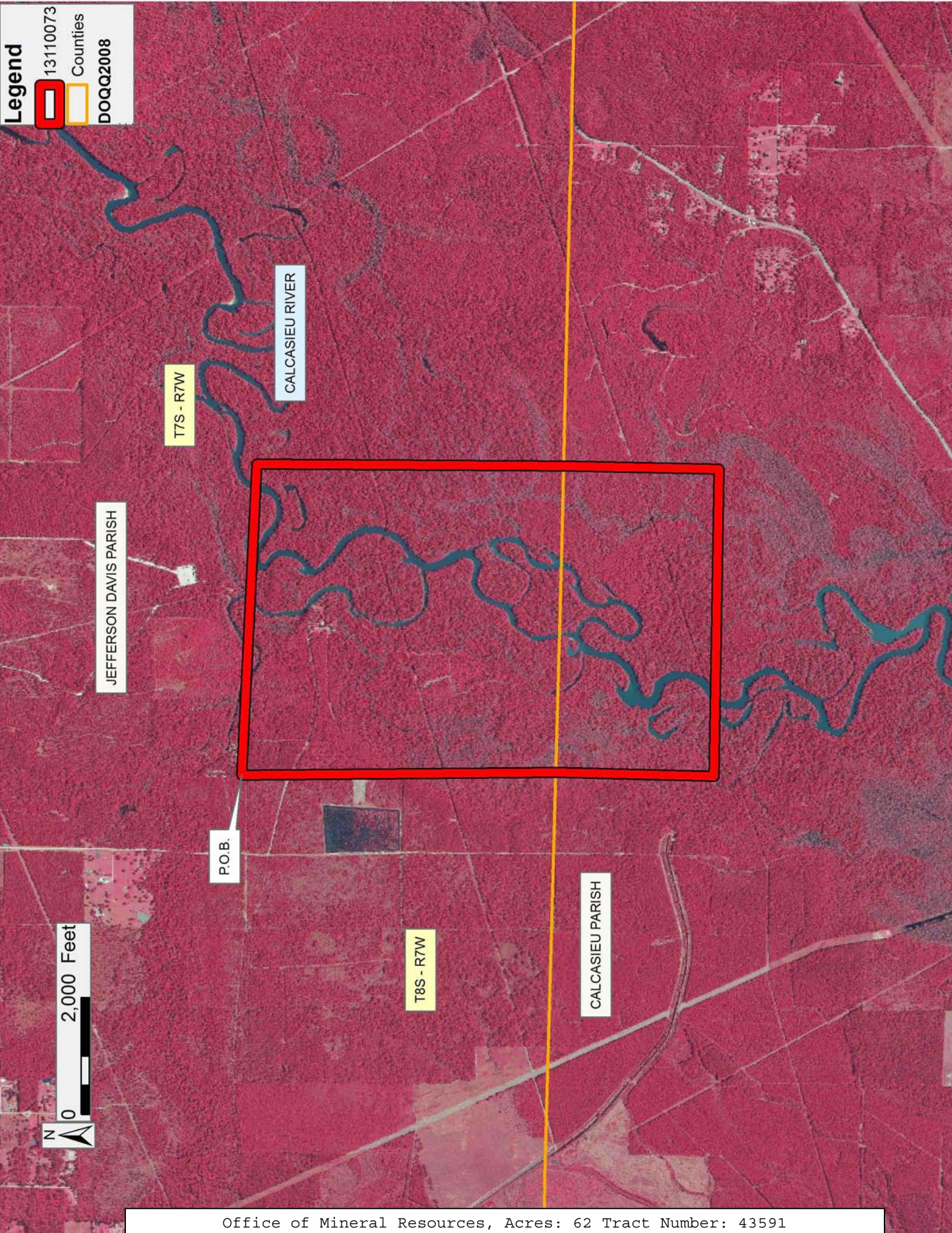
NOTE: The above Tract is located upon a restricted scenic river and all operations in this area must be conducted in strict conformity with the regulations of the Corps of Engineers, U.S. Army.

Applicant: MIDNITE ENERGY, INC.

Bidder	Cash Payment	Price/Acre	Rental	Oil	Gas	Other

Legend

- 13110073
- Counties
- DOQQ2008



TRACT 43592 - Calcasieu Parish, Louisiana

All of the lands now or formerly constituting the beds and bottoms of all water bodies of every nature and description as to which title is vested in the State of Louisiana, together with all islands arising therein and other lands formed by accretion or by reliction, where allowed by law, excepting tax adjudicated lands, and not presently under mineral lease on November 13, 2013, situated in Calcasieu Parish, Louisiana, and more particularly described as follows: Beginning at a point having Coordinates of X = 1,440,462.69 and Y = 619,226.25; thence East 8,059.15 feet to a point having Coordinates of X = 1,448,521.84 and Y = 619,226.25; thence South 00 degrees 53 minutes 45 seconds West 3,053.77 feet to a point having Coordinates of X = 1,448,474.09 and Y = 616,172.86; thence South 01 degrees 52 minutes 56 seconds West 5,074.87 feet to a point on the North line of State Lease No. 20910 having Coordinates of X = 1,448,307.40 and Y = 611,100.73; thence West 6,547.40 feet along the North line of said State Lease No. 20910 to its Northwest corner having Coordinates of X = 1,441,760.00 and Y = 611,100.73; thence West 1,297.31 feet to a point having Coordinates of X = 1,440,462.69 and Y = 611,100.73; thence North 8,125.52 feet to the point of beginning, **LESS AND EXCEPT** any right, title, and interest in lands owned by and not under lease from the State of Louisiana, on behalf of the Calcasieu Parish School Board, situated in Section 16, Township 8 South, Range 7 West, Calcasieu Parish, Louisiana, contained within the above described tract, containing approximately **59 acres**, all as more particularly outlined on a plat on file in the Office of Mineral Resources, Department of Natural Resources. All bearings, distances and coordinates are based on Louisiana Coordinate System of 1927, (North or South Zone), where applicable.

NOTE: The above description of the Tract nominated for lease has been provided and corrected, where required, exclusively by the nomination party. Any mineral lease selected from this Tract and awarded by the Louisiana State Mineral and Energy Board shall be without warranty of any kind, either express, implied, or statutory, including, but not limited to, the implied warranties of merchantability and fitness for a particular purpose. Should the mineral lease awarded by the Louisiana State Mineral and Energy Board be subsequently modified, cancelled or abrogated due to the existence of conflicting leases, operating agreements, private claims or other future obligations or conditions which may affect all or any portion of the leased Tract, it shall not relieve the Lessee of the obligation to pay any bonus due thereon to the Louisiana State Mineral and Energy Board, nor shall the Louisiana State Mineral and Energy Board be obligated to refund any consideration paid by the Lessor prior to such modification, cancellation, or abrogation, including, but not limited to, bonuses, rentals and royalties.

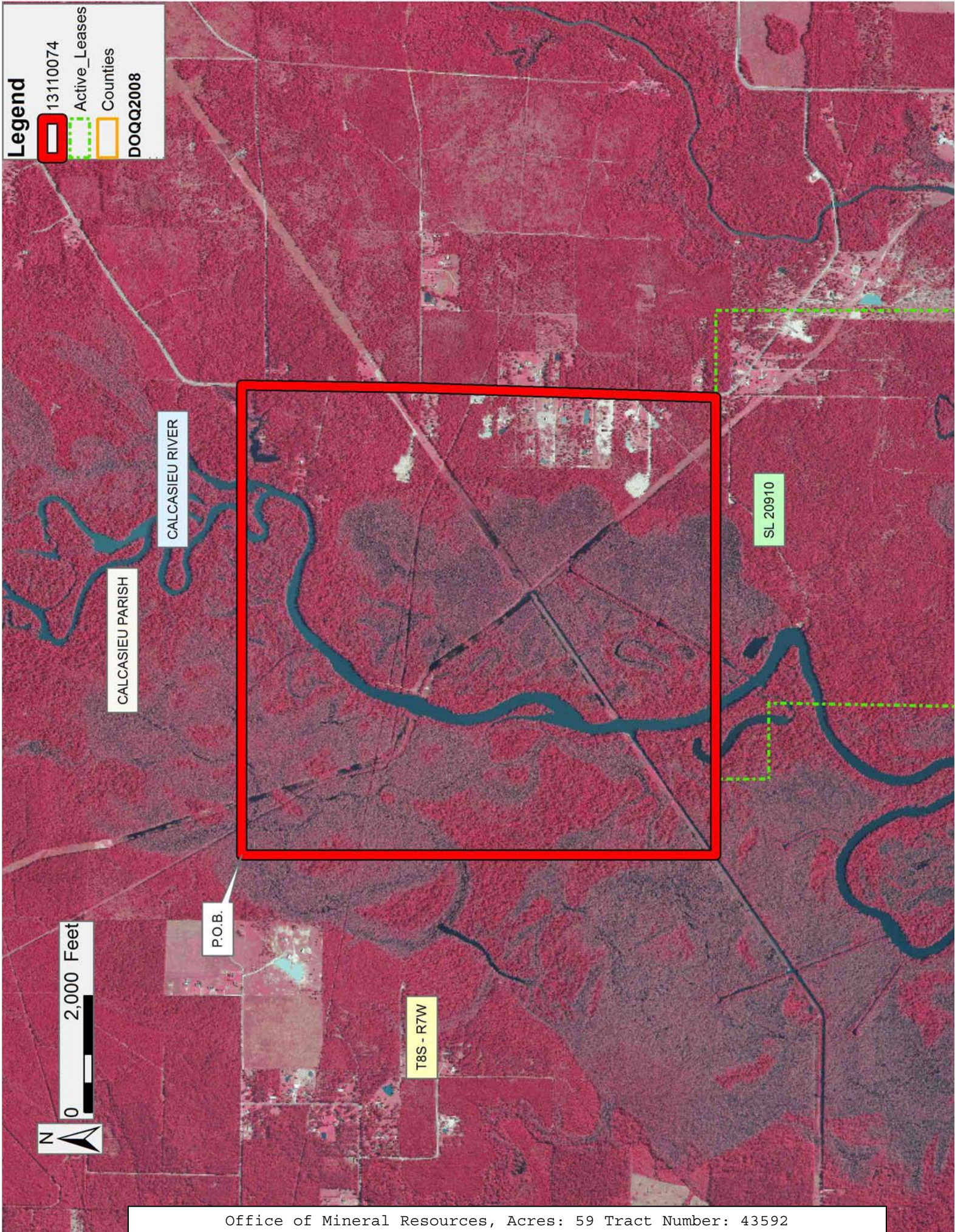
NOTE: The above Tract is located upon a restricted scenic river and all operations in this area must be conducted in strict conformity with the regulations of the Corps of Engineers, U.S. Army.

Applicant: MIDNITE ENERGY, INC.

Bidder	Cash Payment	Price/Acre	Rental	Oil	Gas	Other

Legend

- 13110074
- Active_Leases
- Counties
- DOQQ2008



CALCASIEU PARISH

CALCASIEU RIVER

SL 20910

T8S - R7W

P.O.B.

0 2,000 Feet



TRACT 43593 - St. Charles Parish, Louisiana

All of the lands now or formerly constituting the beds and bottoms of all water bodies of every nature and description as to which title is vested in the State of Louisiana, together with all islands arising therein and other lands formed by accretion or by reliction, where allowed by law, excepting tax adjudicated lands, and not presently under mineral lease on November 13, 2013, situated in St. Charles Parish, Louisiana, and more particularly described as follows: Beginning at a point having Coordinates of X = 2,344,506.00 and Y = 402,155.00; thence East 8,510.00 feet to a point having Coordinates of X = 2,353,016.00 and Y = 402,155.00; thence South 12,620.07 feet to a point having Coordinates of X = 2,353,016.00 and Y = 389,534.93; thence West 4,119.74 feet to a point having Coordinates of X = 2,348,896.26 and Y = 389,534.93; thence South 87 degrees 42 minutes 11 seconds West 4,393.79 feet to a point having Coordinates of X = 2,344,506.00 and Y = 389,358.84; thence North 12,796.16 feet to the point of beginning, containing approximately **2,474.37 acres**, all as more particularly outlined on a plat on file in the Office of Mineral Resources, Department of Natural Resources. All bearings, distances and coordinates are based on Louisiana Coordinate System of 1927, (North or South Zone), where applicable.

NOTE: The above description of the Tract nominated for lease has been provided and corrected, where required, exclusively by the nomination party. Any mineral lease selected from this Tract and awarded by the Louisiana State Mineral and Energy Board shall be without warranty of any kind, either express, implied, or statutory, including, but not limited to, the implied warranties of merchantability and fitness for a particular purpose. Should the mineral lease awarded by the Louisiana State Mineral and Energy Board be subsequently modified, cancelled or abrogated due to the existence of conflicting leases, operating agreements, private claims or other future obligations or conditions which may affect all or any portion of the leased Tract, it shall not relieve the Lessee of the obligation to pay any bonus due thereon to the Louisiana State Mineral and Energy Board, nor shall the Louisiana State Mineral and Energy Board be obligated to refund any consideration paid by the Lessor prior to such modification, cancellation, or abrogation, including, but not limited to, bonuses, rentals and royalties.

NOTE: The State of Louisiana does hereby reserve, and this lease shall be subject to, the imprescriptible right of surface use in the nature of a servitude in favor of the Department of Natural Resources, including its Offices and Commissions, for the sole purpose of implementing, constructing, servicing and maintaining approved coastal zone management and/or restoration projects. Utilization of any and all rights derived under this lease by the mineral lessee, its agents, successors or assigns, shall not interfere with nor hinder the reasonable surface use by the Department of Natural Resources, its Offices or Commissions, as herein above reserved.

Applicant: LARRY S. MINTER, INC.

Bidder	Cash Payment	Price/Acre	Rental	Oil	Gas	Other

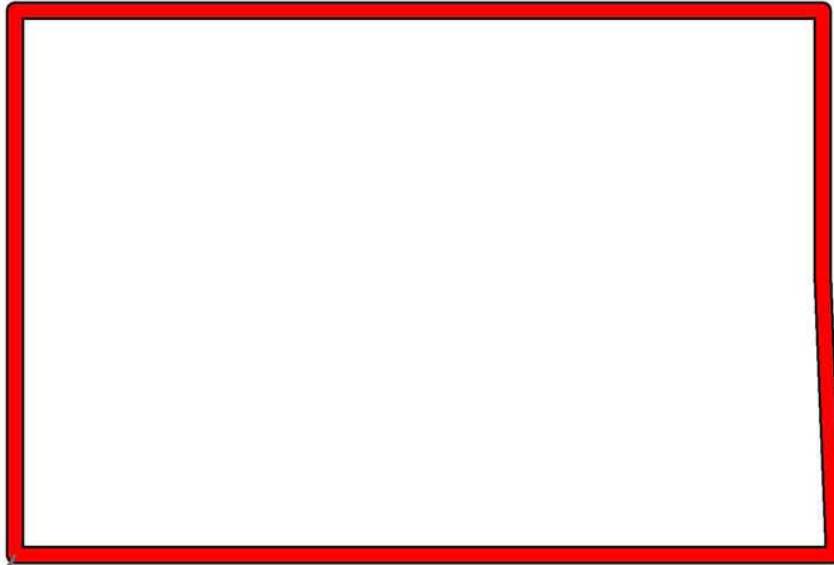
Legend
13110080



0 3,000 Feet

ST CHARLES PARISH

P.O.B.



LAKE SALVADOR

T15S - R22E

TRACT 43594 - St. Charles Parish, Louisiana

All of the lands now or formerly constituting the beds and bottoms of all water bodies of every nature and description as to which title is vested in the State of Louisiana, together with all islands arising therein and other lands formed by accretion or by reliction, where allowed by law, excepting tax adjudicated lands, and not presently under mineral lease on November 13, 2013, situated in St. Charles Parish, Louisiana, and more particularly described as follows: Beginning at a point having Coordinates of X = 2,318,805.00 and Y = 397,518.00; thence North 74 degrees 34 minutes 18 seconds East 17,430.12 feet to a point having Coordinates of X = 2,335,607.00 and Y = 402,155.00; thence South 13,153.09 feet to a point having Coordinates of X = 2,335,607.00 and Y = 389,001.92; thence South 87 degrees 42 minutes 11 seconds West 14,741.91 feet to a point having Coordinates of X = 2,320,876.93 and Y = 388,411.11; thence South 61 degrees 11 minutes 06 seconds West 2,364.73 feet to a point having Coordinates of X = 2,318,805.00 and Y = 387,271.35; thence North 10,246.65 feet to the point of beginning, **LESS AND EXCEPT** any portion of the above described tract that may be located within the Salvador Wildlife Management Area, containing approximately **2,498 acres**, all as more particularly outlined on a plat on file in the Office of Mineral Resources, Department of Natural Resources. All bearings, distances and coordinates are based on Louisiana Coordinate System of 1927, (North or South Zone), where applicable.

NOTE: The above description of the Tract nominated for lease has been provided and corrected, where required, exclusively by the nomination party. Any mineral lease selected from this Tract and awarded by the Louisiana State Mineral and Energy Board shall be without warranty of any kind, either express, implied, or statutory, including, but not limited to, the implied warranties of merchantability and fitness for a particular purpose. Should the mineral lease awarded by the Louisiana State Mineral and Energy Board be subsequently modified, cancelled or abrogated due to the existence of conflicting leases, operating agreements, private claims or other future obligations or conditions which may affect all or any portion of the leased Tract, it shall not relieve the Lessee of the obligation to pay any bonus due thereon to the Louisiana State Mineral and Energy Board, nor shall the Louisiana State Mineral and Energy Board be obligated to refund any consideration paid by the Lessor prior to such modification, cancellation, or abrogation, including, but not limited to, bonuses, rentals and royalties.

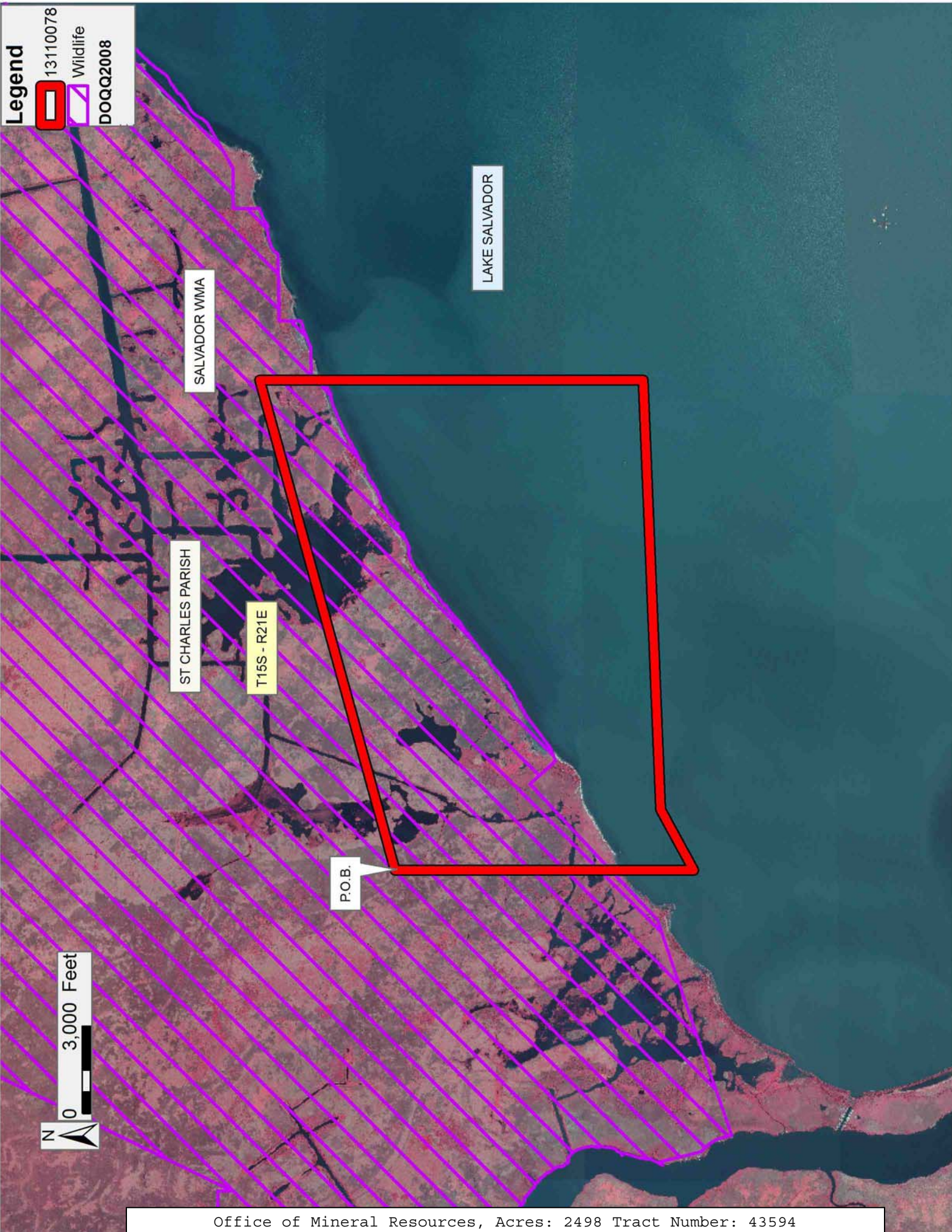
NOTE: The State of Louisiana does hereby reserve, and this lease shall be subject to, the imprescriptible right of surface use in the nature of a servitude in favor of the Department of Natural Resources, including its Offices and Commissions, for the sole purpose of implementing, constructing, servicing and maintaining approved coastal zone management and/or restoration projects. Utilization of any and all rights derived under this lease by the mineral lessee, its agents, successors or assigns, shall not interfere with nor hinder the reasonable surface use by the

Department of Natural Resources, its Offices or Commissions, as herein above reserved.

Applicant: LARRY S. MINTER, INC.

Bidder	Cash Payment	Price/Acre	Rental	Oil	Gas	Other

Legend
13110078
Wildlife
DOQQ2008



SALVADOR WMA

LAKE SALVADOR

ST CHARLES PARISH

T15S - R21E

P.O.B.



TRACT 43595 - St. Charles Parish, Louisiana

All of the lands now or formerly constituting the beds and bottoms of all water bodies of every nature and description as to which title is vested in the State of Louisiana, together with all islands arising therein and other lands formed by accretion or by reliction, where allowed by law, excepting tax adjudicated lands, and not presently under mineral lease on November 13, 2013, situated in St. Charles Parish, Louisiana, and more particularly described as follows: Beginning at a point having Coordinates of X = 2,335,607.00 and Y = 402,155.00; thence East 8,899.00 feet to a point having Coordinates of X = 2,344,506.00 and Y = 402,155.00; thence South 12,796.16 feet to a point having Coordinates of X = 2,344,506.00 and Y = 389,358.84; thence South 87 degrees 42 minutes 11 seconds West 8,906.15 feet to a point having Coordinates of X = 2,335,607.00 and Y = 389,001.92; thence North 13,153.08 feet to the point of beginning, **LESS AND EXCEPT** any portion of the above described tract that may be located within the Salvador Wildlife Management Area, containing approximately **2,500 acres**, all as more particularly outlined on a plat on file in the Office of Mineral Resources, Department of Natural Resources. All bearings, distances and coordinates are based on Louisiana Coordinate System of 1927, (North or South Zone), where applicable.

NOTE: The above description of the Tract nominated for lease has been provided and corrected, where required, exclusively by the nomination party. Any mineral lease selected from this Tract and awarded by the Louisiana State Mineral and Energy Board shall be without warranty of any kind, either express, implied, or statutory, including, but not limited to, the implied warranties of merchantability and fitness for a particular purpose. Should the mineral lease awarded by the Louisiana State Mineral and Energy Board be subsequently modified, cancelled or abrogated due to the existence of conflicting leases, operating agreements, private claims or other future obligations or conditions which may affect all or any portion of the leased Tract, it shall not relieve the Lessee of the obligation to pay any bonus due thereon to the Louisiana State Mineral and Energy Board, nor shall the Louisiana State Mineral and Energy Board be obligated to refund any consideration paid by the Lessor prior to such modification, cancellation, or abrogation, including, but not limited to, bonuses, rentals and royalties.

NOTE: The State of Louisiana does hereby reserve, and this lease shall be subject to, the imprescriptible right of surface use in the nature of a servitude in favor of the Department of Natural Resources, including its Offices and Commissions, for the sole purpose of implementing, constructing, servicing and maintaining approved coastal zone management and/or restoration projects. Utilization of any and all rights derived under this lease by the mineral lessee, its agents, successors or assigns, shall not interfere with nor hinder the reasonable surface use by the Department of Natural Resources, its Offices or Commissions, as herein above reserved.

Applicant: LARRY S. MINTER, INC.

Bidder	Cash Payment	Price/Acre	Rental	Oil	Gas	Other

Legend

-  13110079
-  Wildlife
- DOQQ2008

LAKE SALVADOR

ST CHARLES PARISH

T15S - R22E

P.O.B.

SALVADOR WMA

0 3,000 Feet



TRACT 43596 - Lafourche and St. Charles Parishes, Louisiana

All of the lands now or formerly constituting the beds and bottoms of all water bodies of every nature and description as to which title is vested in the State of Louisiana, together with all islands arising therein and other lands formed by accretion or by reliction, where allowed by law, excepting tax adjudicated lands, and not presently under mineral lease on November 13, 2013, situated in Lafourche and St. Charles Parishes, Louisiana, and more particularly described as follows: Beginning at a point having Coordinates of X = 2,300,325.00 and Y = 397,518.00; thence East 18,480.00 feet to a point having Coordinates of X = 2,318,805.00 and Y = 397,518.00; thence South 10,246.65 feet to a point having Coordinates of X = 2,318,805.00 and Y = 387,271.35; thence South 61 degrees 11 minutes 06 seconds West 6,582.85 feet to a point having Coordinates of X = 2,313,037.23 and Y = 384,098.54; thence West 12,712.23 feet to a point having Coordinates of X = 2,300,325.00 and Y = 384,098.54; thence North 13,419.46 feet to the point of beginning, **LESS AND EXCEPT** any portion of the above described tract that may be located within the Salvador Wildlife Management Area, containing approximately **733 acres**, all as more particularly outlined on a plat on file in the Office of Mineral Resources, Department of Natural Resources. All bearings, distances and coordinates are based on Louisiana Coordinate System of 1927, (North or South Zone), where applicable.

NOTE: The above description of the Tract nominated for lease has been provided and corrected, where required, exclusively by the nomination party. Any mineral lease selected from this Tract and awarded by the Louisiana State Mineral and Energy Board shall be without warranty of any kind, either express, implied, or statutory, including, but not limited to, the implied warranties of merchantability and fitness for a particular purpose. Should the mineral lease awarded by the Louisiana State Mineral and Energy Board be subsequently modified, cancelled or abrogated due to the existence of conflicting leases, operating agreements, private claims or other future obligations or conditions which may affect all or any portion of the leased Tract, it shall not relieve the Lessee of the obligation to pay any bonus due thereon to the Louisiana State Mineral and Energy Board, nor shall the Louisiana State Mineral and Energy Board be obligated to refund any consideration paid by the Lessor prior to such modification, cancellation, or abrogation, including, but not limited to, bonuses, rentals and royalties.

NOTE: The State of Louisiana does hereby reserve, and this lease shall be subject to, the imprescriptible right of surface use in the nature of a servitude in favor of the Department of Natural Resources, including its Offices and Commissions, for the sole purpose of implementing, constructing, servicing and maintaining approved coastal zone management and/or restoration projects. Utilization of any and all rights derived under this lease by the mineral lessee, its agents, successors or assigns, shall not interfere with nor hinder the reasonable surface use by the

Department of Natural Resources, its Offices or Commissions, as herein above reserved.

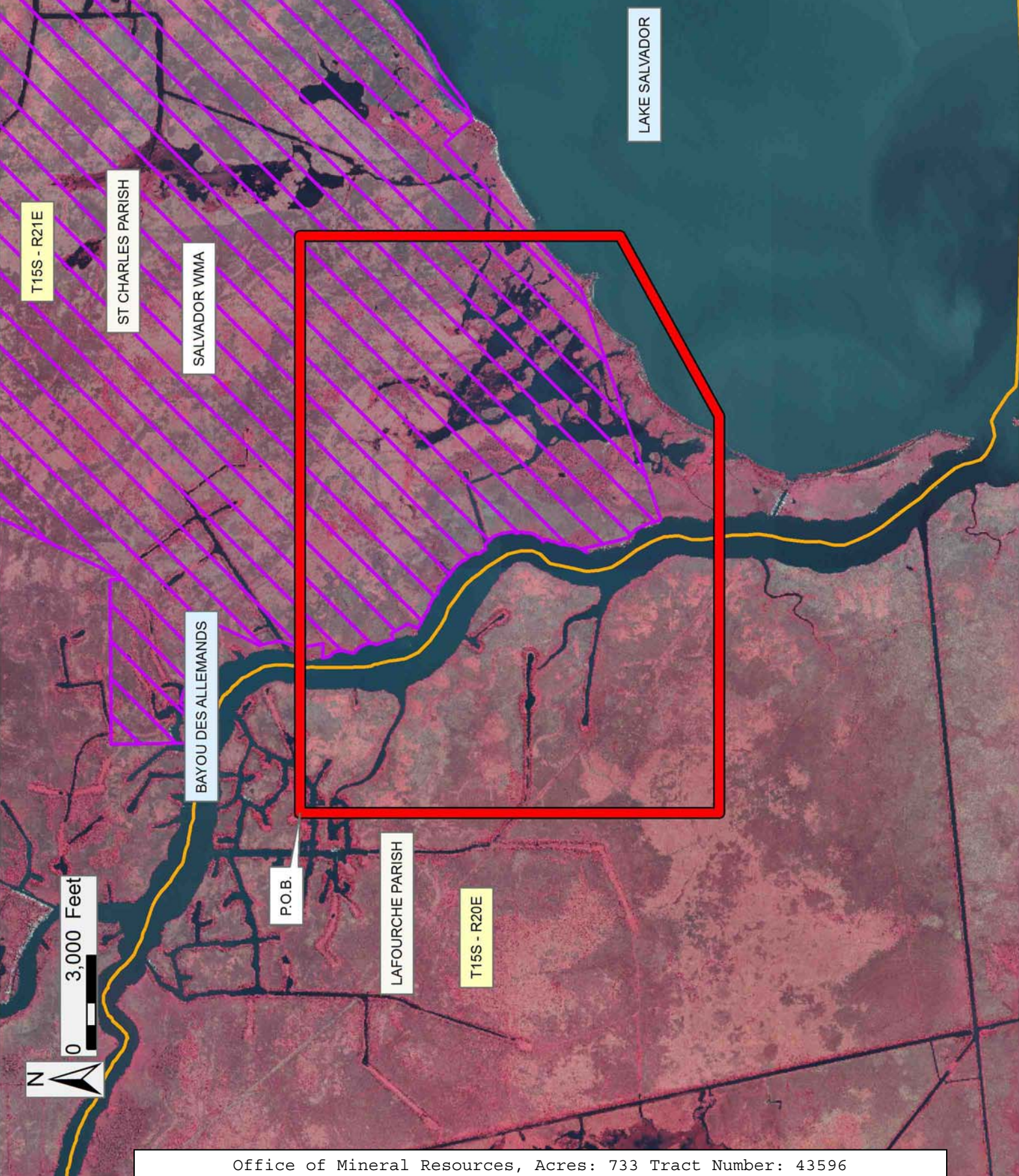
NOTE: The above Tract is located upon a restricted scenic river and all operations in this area must be conducted in strict conformity with the regulations of the Corps of Engineers, U.S. Army.

Applicant: LARRY S. MINTER, INC.

Bidder	Cash Payment	Price/Acre	Rental	Oil	Gas	Other

Legend

- 13110077
- Wildlife
- Counties
- DOQQ2008



TRACT 43597 - Lafourche and St. Charles Parishes, Louisiana

All of the lands now or formerly constituting the beds and bottoms of all water bodies of every nature and description as to which title is vested in the State of Louisiana, together with all islands arising therein and other lands formed by accretion or by reliction, where allowed by law, excepting tax adjudicated lands, and not presently under mineral lease on November 13, 2013, situated in Lafourche and St. Charles Parishes, Louisiana, and more particularly described as follows: Beginning at a point having Coordinates of X = 2,300,325.00 and Y = 384,098.54; thence East 12,632.63 feet to a point having Coordinates of X = 2,312,957.63 and Y = 384,098.54; thence South 2,532.79 feet to the Northwest corner of State Lease No. 21058 having Coordinates of X = 2,312,957.63 and Y = 381,565.75; thence West 0.01 feet to the Northeast corner of State Lease No. 21060 having Coordinates of X = 2,312,957.62 and Y = 381,565.75; thence along the boundary of said State Lease No. 21060 the following courses and distances: West 1,600.00 feet and South 10,683.75 feet to its Southwest corner having Coordinates of X = 2,311,357.62 and Y = 370,882.00; thence West 11,032.62 feet to a point having Coordinates of X = 2,300,325.00 and Y = 370,882.00; thence North 13,216.54 feet to the point of beginning, containing approximately **388 acres**, all as more particularly outlined on a plat on file in the Office of Mineral Resources, Department of Natural Resources. All bearings, distances and coordinates are based on Louisiana Coordinate System of 1927, (North or South Zone), where applicable.

NOTE: The above description of the Tract nominated for lease has been provided and corrected, where required, exclusively by the nomination party. Any mineral lease selected from this Tract and awarded by the Louisiana State Mineral and Energy Board shall be without warranty of any kind, either express, implied, or statutory, including, but not limited to, the implied warranties of merchantability and fitness for a particular purpose. Should the mineral lease awarded by the Louisiana State Mineral and Energy Board be subsequently modified, cancelled or abrogated due to the existence of conflicting leases, operating agreements, private claims or other future obligations or conditions which may affect all or any portion of the leased Tract, it shall not relieve the Lessee of the obligation to pay any bonus due thereon to the Louisiana State Mineral and Energy Board, nor shall the Louisiana State Mineral and Energy Board be obligated to refund any consideration paid by the Lessor prior to such modification, cancellation, or abrogation, including, but not limited to, bonuses, rentals and royalties.

NOTE: The State of Louisiana does hereby reserve, and this lease shall be subject to, the imprescriptible right of surface use in the nature of a servitude in favor of the Department of Natural Resources, including its Offices and Commissions, for the sole purpose of implementing, constructing, servicing and maintaining approved coastal zone management and/or restoration projects. Utilization of any and all rights derived under this lease by the mineral lessee, its agents, successors or assigns,

shall not interfere with nor hinder the reasonable surface use by the Department of Natural Resources, its Offices or Commissions, as herein above reserved.

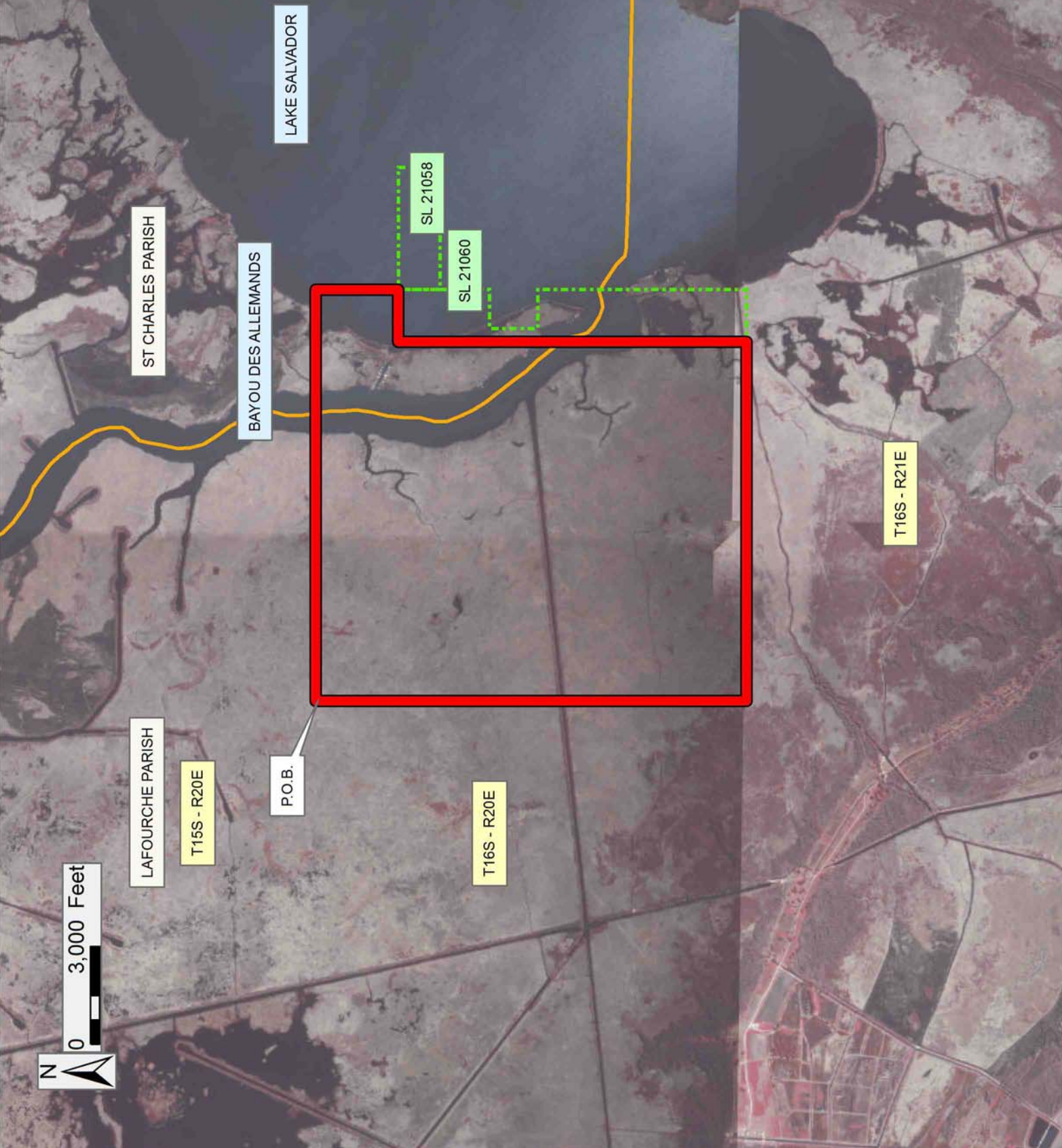
NOTE: The above Tract is located upon a restricted scenic river and all operations in this area must be conducted in strict conformity with the regulations of the Corps of Engineers, U.S. Army.

Applicant: LARRY S. MINTER, INC.

Bidder	Cash Payment	Price/Acre	Rental	Oil	Gas	Other

Legend

- 13110076
- Active_Leases
- Counties
- DOQQ2004



TRACT 43598 - Portion of Block 32, Main Pass Area, Revised, Plaquemines Parish, Louisiana

All of the lands now or formerly constituting the beds and bottoms of all water bodies of every nature and description as to which title is vested in the State of Louisiana, together with all islands arising therein and other lands formed by accretion or by reliction, where allowed by law, excepting tax adjudicated lands, and not presently under mineral lease on November 13, 2013, situated in Plaquemines Parish, Louisiana, and more particularly described as follows: Beginning at a point having Coordinates of X = 2,605,850.00 and Y = 297,280.00, said point being on the West line of Block 32, Main Pass Area, Revised, said point also being the Northwest corner of State Lease No. 1958, as amended; thence North 10,300.00 feet along said West line of said Block 32, Main Pass Area, Revised, to a point having Coordinates of X = 2,605,850.00 and Y = 307,580.00, said point being the Northwest corner of said Block 32, Main Pass Area, Revised; thence East 14,750.00 feet along the North line of said Block 32, Main Pass Area, Revised, to a point having Coordinates of X = 2,620,600.00 and Y = 307,580.00, said point being the Northeast corner of said Block 32, Main Pass Area, Revised; thence South 8,404.17 feet along the East line of said Block 32, Main Pass Area, Revised, to a point having Coordinates of X = 2,620,600.00 and Y = 299,175.83, said point being on the Northern boundary of State Lease No. 20103; thence along the Northern, Western and Southern boundaries of said State Lease No. 20103 the following courses: West 452.11 feet to a point having Coordinates of X = 2,620,147.89 and Y = 299,175.83, said point being the Northwest corner of said State Lease No. 20103; South 1,320.00 feet to a point having Coordinates of X = 2,620,147.89 and Y = 297,855.83, said point being the Southwest corner of said State Lease No. 20103; and East 452.11 feet to a point having Coordinates of X = 2,620,600.00 and Y = 297,855.83, said point being on said East line of said Block 32, Main Pass Area, Revised; thence South 575.83 feet along said East line of said Block 32, Main Pass Area, Revised, to a point having Coordinates of X = 2,620,600.00 and Y = 297,280.00, said point being the Northeast corner of said State Lease No. 1958, as amended; thence West 5,612.00 feet along the Northern boundary of said State Lease No. 1958, as amended, to a point having Coordinates of X = 2,614,988.00 and Y = 297,280.00, said point being the Southeast corner of State Lease No. 20781; thence North 1,895.83 feet along the Eastern boundary of said State Lease No. 20781, to a point having Coordinates of X = 2,614,988.00 and Y = 299,175.83, said point being the Southernmost corner of State Lease No. 20967; thence North 44 degrees 58 minutes 03 seconds East 6,462.37 feet along the Southeastern boundary of said State Lease No. 20967 to a point having Coordinates of X = 2,619,555.00 and Y = 303,748.00, said point being the Easternmost corner of said State Lease No. 20967, said point also being the Southeast corner of State Lease No. 20482; thence along the Eastern, Northern and Western boundaries of said State Lease No. 20482 the following courses and distances, to wit: North 2,778.00 feet to a point having Coordinates of X = 2,619,555.00 and Y = 306,526.00, said point being the Northeast corner of said State Lease No. 20482; West 3,800.00 feet to a point having Coordinates of X =

2,615,755.00 and Y = 306,526.00, said point being the Northwest corner of said State Lease No. 20482; and South 659.00 feet to a point having Coordinates of X = 2,615,755.00 and Y = 305,867.00, said point being the Northeast corner of State Lease No. 20968; thence along the Northern and Western boundaries of said State Lease No. 20968 the following courses and distances, to wit: West 4,725.00 feet to a point having Coordinates of X = 2,611,030.00 and Y = 305,867.00, said point being the Northwest corner of said State Lease No. 20968; and South 1,475.00 feet to a point having Coordinates of X = 2,611,030.00 and Y = 304,392.00, said point being the Southwest corner of said State Lease No. 20968, said point also being on the Northern boundary of said State Lease No. 20781; thence along the Northern and Western boundaries of said State Lease No. 20781 the following courses and distances, to wit: West 2,464.00 feet to a point having Coordinates of X = 2,608,566.00 and Y = 304,392.00, said point being the Northernmost northwest corner of said State Lease No. 20781; South 4,935.43 feet to a point having Coordinates of X = 2,608,566.00 and Y = 299,456.57; West 1,000.00 feet to a point having Coordinates of X = 2,607,566.00 and Y = 299,456.57, said point being the Southernmost Northwest corner of said State Lease No. 20781; and South 2,176.57 feet to a point having Coordinates of X = 2,607,566.00 and Y = 297,280.00, said point being the Southwest corner of said State Lease No. 20781, said point also being on said Northern boundary of said State Lease No. 1958, as amended; thence West 1,716.00 feet along said Northern boundary of said State Lease No. 1958, as amended, to the point of beginning, containing approximately **1,722.18 acres**, all as more particularly outlined on a plat on file in the Office of Mineral Resources, Department of Natural Resources. All bearings, distances and coordinates are based on Louisiana Coordinate System of 1927, (North or South Zone), where applicable.

NOTE: The above description of the Tract nominated for lease has been provided and corrected, where required, exclusively by the nomination party. Any mineral lease selected from this Tract and awarded by the Louisiana State Mineral and Energy Board shall be without warranty of any kind, either express, implied, or statutory, including, but not limited to, the implied warranties of merchantability and fitness for a particular purpose. Should the mineral lease awarded by the Louisiana State Mineral and Energy Board be subsequently modified, cancelled or abrogated due to the existence of conflicting leases, operating agreements, private claims or other future obligations or conditions which may affect all or any portion of the leased Tract, it shall not relieve the Lessee of the obligation to pay any bonus due thereon to the Louisiana State Mineral and Energy Board, nor shall the Louisiana State Mineral and Energy Board be obligated to refund any consideration paid by the Lessor prior to such modification, cancellation, or abrogation, including, but not limited to, bonuses, rentals and royalties.

NOTE: The State of Louisiana does hereby reserve, and this lease shall be subject to, the imprescriptible right of surface use in the nature of a servitude in favor of the Department of Natural Resources, including its

Offices and Commissions, for the sole purpose of implementing, constructing, servicing and maintaining approved coastal zone management and/or restoration projects. Utilization of any and all rights derived under this lease by the mineral lessee, its agents, successors or assigns, shall not interfere with nor hinder the reasonable surface use by the Department of Natural Resources, its Offices or Commissions, as herein above reserved.

NOTE: This tract is located in an area designated by the Louisiana Legislature or the Wildlife and Fisheries Commission as a Public Oyster Seed Ground, Reservation, or area of Calcasieu or Sabine Lake. Proposed projects occurring in these areas will be evaluated on a case by case basis by Louisiana Department of Wildlife & Fisheries. Modifications to proposed project features including, but not limited to, access routes, well sites, flowlines, and appurtenant structures maybe required by the Louisiana Department of Wildlife and Fisheries. In addition, compensatory mitigation will be required to offset unavoidable habitat impacts.

Applicant: ROBERT A. SCHROEDER, INC.

Bidder	Cash Payment	Price/Acre	Rental	Oil	Gas	Other

13110094
 Blocks
 Active_Lease:

