

TRACT 43599 - Portion of Block 31, Main Pass Area, Revised, Plaquemines Parish, Louisiana

All of the lands now or formerly constituting the beds and bottoms of all water bodies of every nature and description as to which title is vested in the State of Louisiana, together with all islands arising therein and other lands formed by accretion or by reliction, where allowed by law, excepting tax adjudicated lands, and not presently under mineral lease on November 13, 2013, situated in Plaquemines Parish, Louisiana, and more particularly described as follows: Beginning at a point having Coordinates of X = 2,620,600.00 and Y = 294,830.00, said point being on the West line of Block 31, Main Pass Area, Revised, said point also being the Westernmost Northwest corner of Lease No. 2125, as amended; thence North 3,025.83 feet on and along said West line of said Block 31, Main Pass Area, Revised, to a point having Coordinates of X = 2,620,600.00 and Y = 297,855.83, said point being on the Southern boundary of State Lease No. 20103; thence along the Southern, Eastern and Northern boundaries of said State Lease No. 20103 the following courses: East 867.89 feet to a point having Coordinates of X = 2,621,467.89 and Y = 297,855.83, said point being the Southeast corner of said State Lease No. 20103; North 1,320.00 feet to a point having Coordinates of X = 2,621,467.89 and Y = 299,175.83, said point being the Northeast corner of said State Lease No. 20103; and West 867.89 feet to a point having Coordinates of X = 2,620,600.00 and Y = 299,175.83, said point being on said West line of said Block 31, Main Pass Area, Revised; thence North 8,404.17 feet along said West line of said Block 31, Main Pass Area, Revised, to a point having Coordinates of X = 2,620,600.00 and Y = 307,580.00, said point being the Northwest corner of said Block 31, Main Pass Area, Revised; thence East 7,375.00 feet along the North line of said Block 31, Main Pass Area, Revised, to a point having Coordinates of X = 2,627,975.00 and Y = 307,580.00; thence South 14,750.00 feet to a point having Coordinates of X = 2,627,975.00 and Y = 292,830.00, said point being on the South line of said Block 31, Main Pass Area, Revised; thence West 3,725.00 feet along said South line of said Block 31, Main Pass Area, Revised, to a point having Coordinates of X = 2,624,250.00 and Y = 292,830.00, said point being the Southernmost Southeast corner of said State Lease No. 2125, as amended; thence along the Eastern and Northern boundaries of said State Lease No. 2125, as amended, the following courses: North 52 degrees 54 minutes 26 seconds East 2,570.02 feet to a point having Coordinates of X = 2,626,300.00 and Y = 294,380.00; North 10 degrees 46 minutes 25 seconds East 2,514.32 feet to a point having Coordinates of X = 2,626,770.00 and Y = 296,850.00; South 83 degrees 19 minutes 25 seconds West 3,010.42 feet to a point having Coordinates of X = 2,623,780.00 and Y = 296,500.00; South 55 degrees 44 minutes 20 seconds West 3,339.46 feet to a point having Coordinates of X = 2,621,020.00 and Y = 294,620.00; and North 63 degrees 26 minutes 06 seconds West 469.57 feet to the point of beginning, containing approximately **2,082.33 acres**, all as more particularly outlined on a plat on file in the Office of Mineral Resources, Department of Natural Resources. All bearings, distances and coordinates are based on Louisiana Coordinate System of 1927, (North or South Zone), where applicable.

NOTE: The above description of the Tract nominated for lease has been provided and corrected, where required, exclusively by the nomination party. Any mineral lease selected from this Tract and awarded by the Louisiana State Mineral and Energy Board shall be without warranty of any kind, either express, implied, or statutory, including, but not limited to, the implied warranties of merchantability and fitness for a particular purpose. Should the mineral lease awarded by the Louisiana State Mineral and Energy Board be subsequently modified, cancelled or abrogated due to the existence of conflicting leases, operating agreements, private claims or other future obligations or conditions which may affect all or any portion of the leased Tract, it shall not relieve the Lessee of the obligation to pay any bonus due thereon to the Louisiana State Mineral and Energy Board, nor shall the Louisiana State Mineral and Energy Board be obligated to refund any consideration paid by the Lessor prior to such modification, cancellation, or abrogation, including, but not limited to, bonuses, rentals and royalties.

NOTE: The State of Louisiana does hereby reserve, and this lease shall be subject to, the imprescriptible right of surface use in the nature of a servitude in favor of the Department of Natural Resources, including its Offices and Commissions, for the sole purpose of implementing, constructing, servicing and maintaining approved coastal zone management and/or restoration projects. Utilization of any and all rights derived under this lease by the mineral lessee, its agents, successors or assigns, shall not interfere with nor hinder the reasonable surface use by the Department of Natural Resources, its Offices or Commissions, as herein above reserved.

NOTE: This tract is located in an area designated by the Louisiana Legislature or the Wildlife and Fisheries Commission as a Public Oyster Seed Ground, Reservation, or area of Calcasieu or Sabine Lake. Proposed projects occurring in these areas will be evaluated on a case by case basis by Louisiana Department of Wildlife & Fisheries. Modifications to proposed project features including, but not limited to, access routes, well sites, flowlines, and appurtenant structures maybe required by the Louisiana Department of Wildlife and Fisheries. In addition, compensatory mitigation will be required to offset unavoidable habitat impacts.

Bidder	Cash Payment	Price/Acre	Rental	Oil	Gas	Other

Applicant: ROBERT A. SCHROEDER, INC.

Legend

- 13110095
- Blocks
- Active_Leases

PLAQUEMINES PARISH

MP0026

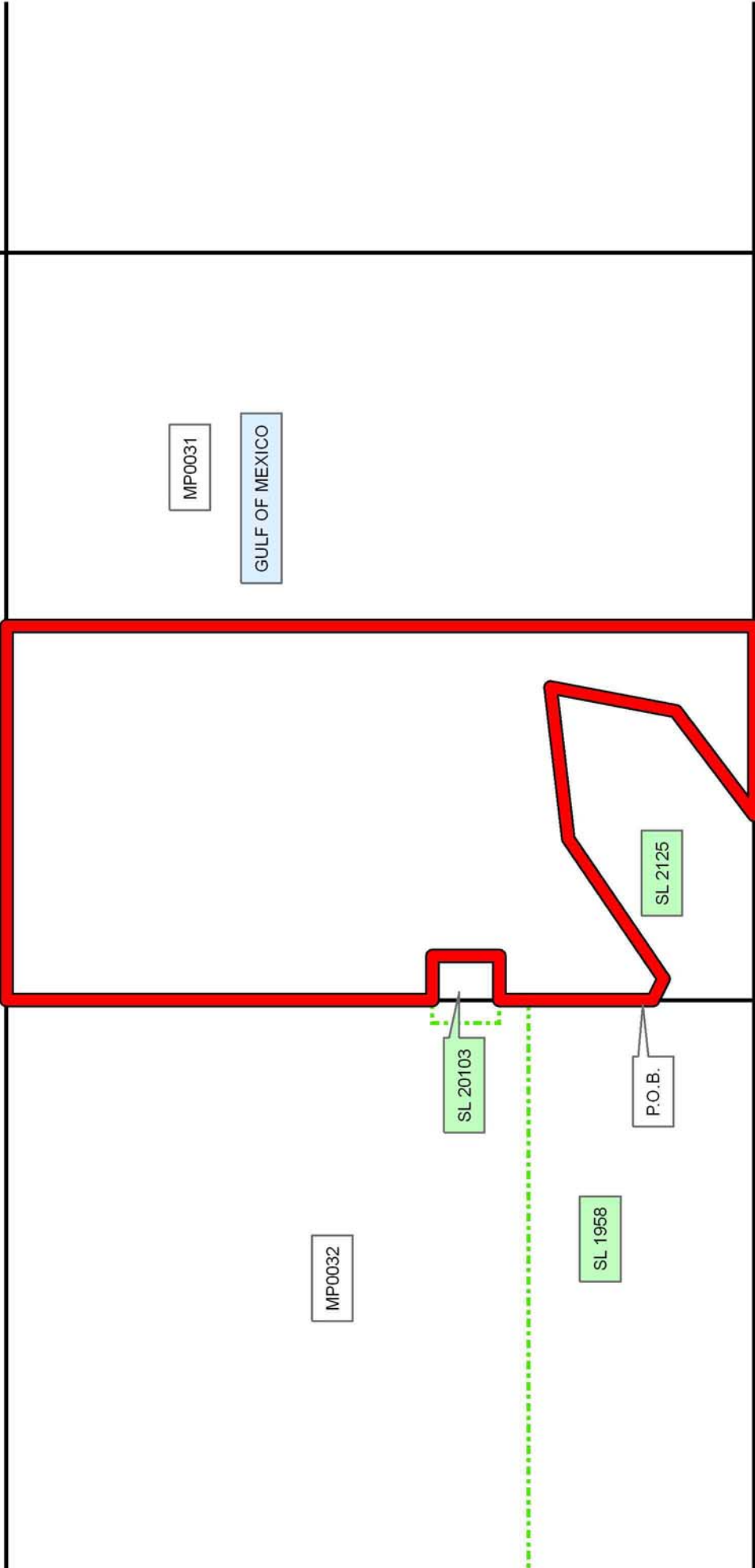
MAIN PASS AREA, REVISED

MP0031

GULF OF MEXICO

MP0036

MP0032



TRACT 43600 - Portion of Block 36, Main Pass Area, Revised, Plaquemines Parish, Louisiana

All of the lands now or formerly constituting the beds and bottoms of all water bodies of every nature and description as to which title is vested in the State of Louisiana, together with all islands arising therein and other lands formed by accretion or by reliction, where allowed by law, excepting tax adjudicated lands, and not presently under mineral lease on November 13, 2013, situated in Plaquemines Parish, Louisiana, and more particularly described as follows: Beginning at a point having Coordinates of X = 2,620,600.00 and Y = 292,830.00, said point being the Northwest corner of Block 36, Main Pass Area, Revised; thence East 7,375.00 feet on and along the North line of said Block 36, Main Pass Area, Revised, to a point having Coordinates of X = 2,627,975.00 and Y = 292,830.00; thence South 14,373.21 feet to a point having Coordinates of X = 2,627,975.00 and Y = 278,456.79, said point being the Northwest corner of State Lease No. 20762; thence along the Western boundary of said State Lease No. 20762 the following courses and distances, to wit: South 82 degrees 16 minutes 44 seconds West 9.28 feet to a point having Coordinates of X = 2,627,965.80 and Y = 278,455.54; and South 375.54 feet to a point having Coordinates of X = 262,796.80 and Y = 278,080.00, said point being the Southwest corner of said State Lease No. 20762, said point also being on the South line of said Block 36, Main Pass Area, Revised; thence West 7,365.80 feet along said South line of said Block 36, Main Pass Area, Revised, to a point having Coordinates of X = 2,620,600.00 and Y = 278,080.00, said point being the Southwest corner of said Block 36, Main Pass Area, Revised; thence North 14,750.00 feet on and along the West line of said Block 36, Main Pass Area, Revised, to the point of beginning, containing approximately **2,497.19 acres**, all as more particularly outlined on a plat on file in the Office of Mineral Resources, Department of Natural Resources. All bearings, distances and coordinates are based on Louisiana Coordinate System of 1927, (North or South Zone), where applicable.

NOTE: The above description of the Tract nominated for lease has been provided and corrected, where required, exclusively by the nomination party. Any mineral lease selected from this Tract and awarded by the Louisiana State Mineral and Energy Board shall be without warranty of any kind, either express, implied, or statutory, including, but not limited to, the implied warranties of merchantability and fitness for a particular purpose. Should the mineral lease awarded by the Louisiana State Mineral and Energy Board be subsequently modified, cancelled or abrogated due to the existence of conflicting leases, operating agreements, private claims or other future obligations or conditions which may affect all or any portion of the leased Tract, it shall not relieve the Lessee of the obligation to pay any bonus due thereon to the Louisiana State Mineral and Energy Board, nor shall the Louisiana State Mineral and Energy Board be obligated to refund any consideration paid by the Lessor prior to such modification, cancellation, or abrogation, including, but not limited to, bonuses, rentals and royalties.




NOTE: The State of Louisiana does hereby reserve, and this lease shall be subject to, the imprescriptible right of surface use in the nature of a servitude in favor of the Department of Natural Resources, including its Offices and Commissions, for the sole purpose of implementing, constructing, servicing and maintaining approved coastal zone management and/or restoration projects. Utilization of any and all rights derived under this lease by the mineral lessee, its agents, successors or assigns, shall not interfere with nor hinder the reasonable surface use by the Department of Natural Resources, its Offices or Commissions, as herein above reserved.

NOTE: This tract is located in an area designated by the Louisiana Legislature or the Wildlife and Fisheries Commission as a Public Oyster Seed Ground, Reservation, or area of Calcasieu or Sabine Lake. Proposed projects occurring in these areas will be evaluated on a case by case basis by Louisiana Department of Wildlife & Fisheries. Modifications to proposed project features including, but not limited to, access routes, well sites, flowlines, and appurtenant structures maybe required by the Louisiana Department of Wildlife and Fisheries. In addition, compensatory mitigation will be required to offset unavoidable habitat impacts.

Applicant: ROBERT A. SCHROEDER, INC.

Bidder	Cash Payment	Price/Acre	Rental	Oil	Gas	Other

Legend

-  13110096
-  Blocks
-  Active_Leases

PLAQUEMINES PARISH

MP0031

GULF OF MEXICO

MP0036

MAIN PASS AREA, REVISED

SL 20762

SL 20764

MP0049

SL 2125



0 3,000 Feet

P.O.B.

SL 1958

SL 1961

MP0035

TRACT 43601 - Lafourche Parish, Louisiana

All of the lands now or formerly constituting the beds and bottoms of all water bodies of every nature and description as to which title is vested in the State of Louisiana, together with all islands arising therein and other lands formed by accretion or by reliction, where allowed by law, excepting tax adjudicated lands, and not presently under mineral lease on November 13, 2013, situated in Lafourche Parish, Louisiana, and more particularly described as follows: Beginning at a point also being a point on the Eastern boundary of State Lease No. 17339, as amended, having Coordinates of X = 2,339,200.03 and Y = 266,106.94; thence along the border of said State Lease No. 17339 for the following courses: North 11 degrees 35 minutes 59 seconds West 1,631.38 feet to a point having Coordinates of X = 2,338,872.00 and Y = 267,705.00 and Westerly approximately 1,877 feet to a point of intersection with the Eastern boundary of State Lease No. 378, as amended; thence along the boundary of said State Lease No. 378, as amended, the following courses: Northerly approximately 3,289 feet to a point being its Northeast corner and Southwesterly approximately 9,544 feet to a point being the Southeast corner of State Lease No. 19531; thence North approximately 8,706 feet to the Northeast corner of said State Lease No. 19531 to a point having Coordinates of X = 2,327,374.36 and Y = 279,452.64; thence East 10,000.00 feet to a point having Coordinates of X = 2,337,374.36 and Y = 279,452.64; thence South 33 degrees 28 minutes 38 seconds East 16,000.00 feet to a point having Coordinates of X = 2,346,200.03 and Y = 266,106.94; thence West 7,000.00 feet to the point of beginning, **LESS AND EXCEPT** any right, title, and interest in lands owned by and not under lease from the State of Louisiana, on behalf of the Lafourche Parish School Board, situated in Section 16, Township 19 South, Range 21 East, Lafourche Parish, Louisiana, contained within the above described tract, containing approximately **67 acres**, all as more particularly outlined on a plat on file in the Office of Mineral Resources, Department of Natural Resources. All bearings, distances and coordinates are based on Louisiana Coordinate System of 1927, (North or South Zone), where applicable.

NOTE: The above description of the Tract nominated for lease has been provided and corrected, where required, exclusively by the nomination party. Any mineral lease selected from this Tract and awarded by the Louisiana State Mineral and Energy Board shall be without warranty of any kind, either express, implied, or statutory, including, but not limited to, the implied warranties of merchantability and fitness for a particular purpose. Should the mineral lease awarded by the Louisiana State Mineral and Energy Board be subsequently modified, cancelled or abrogated due to the existence of conflicting leases, operating agreements, private claims or other future obligations or conditions which may affect all or any portion of the leased Tract, it shall not relieve the Lessee of the obligation to pay any bonus due thereon to the Louisiana State Mineral and Energy Board, nor shall the Louisiana State Mineral and Energy Board be obligated to refund any consideration paid by the Lessor prior to such

modification, cancellation, or abrogation, including, but not limited to, bonuses, rentals and royalties.

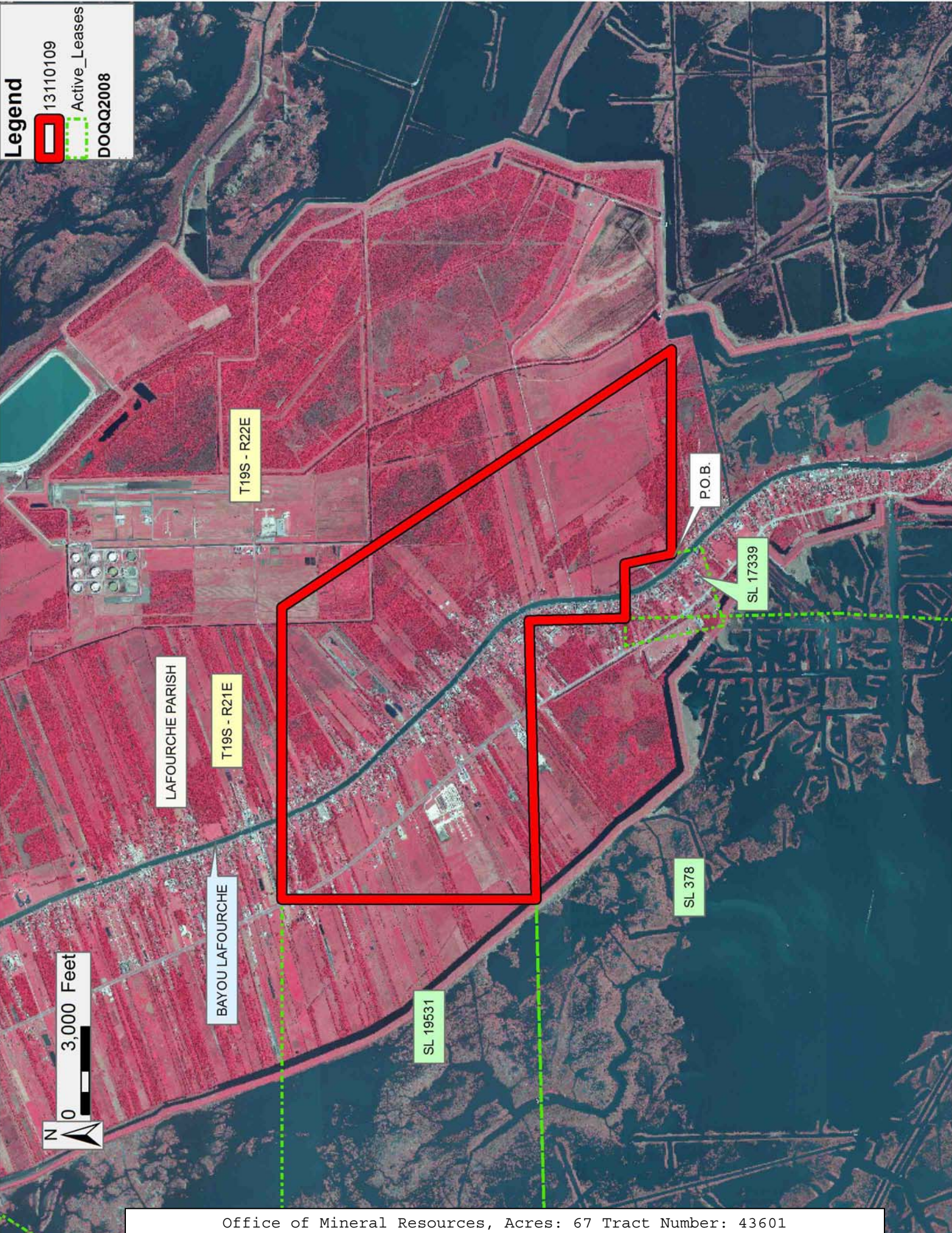
NOTE: The State of Louisiana does hereby reserve, and this lease shall be subject to, the imprescriptible right of surface use in the nature of a servitude in favor of the Department of Natural Resources, including its Offices and Commissions, for the sole purpose of implementing, constructing, servicing and maintaining approved coastal zone management and/or restoration projects. Utilization of any and all rights derived under this lease by the mineral lessee, its agents, successors or assigns, shall not interfere with nor hinder the reasonable surface use by the Department of Natural Resources, its Offices or Commissions, as herein above reserved.

Applicant: KARE-SUE ENERGY, INC.

Bidder	Cash Payment	Price/Acre	Rental	Oil	Gas	Other

Legend

- 13110109
- Active_Leases
- DOQQ2008



TRACT 43602 - Lafourche Parish, Louisiana

All of the lands now or formerly constituting the beds and bottoms of all water bodies of every nature and description as to which title is vested in the State of Louisiana, together with all islands arising therein and other lands formed by accretion or by reliction, where allowed by law, excepting tax adjudicated lands, and not presently under mineral lease on November 13, 2013, situated in Lafourche Parish, Louisiana, and more particularly described as follows: Beginning at a point, also being a point on the Eastern boundary of State Lease No. 17339, as amended, having Coordinates of X = 2,339,200.03 and Y = 266,106.94; thence East 7,000.00 feet to a point having Coordinates of X = 2,346,200.03 and Y = 266,106.94; thence South 10 degrees 35 minutes 19 seconds East 18,000.00 feet to a point having Coordinates of X = 2,349,507.63 and Y = 248,413.45; thence West 13,000.00 feet to a point having Coordinates of X = 2,336,507.63 and Y = 248,413.45; thence Northerly approximately 1354 feet to a point being the Southeast corner of State Lease No. 378, as amended; thence Northerly along the Eastern boundary of said State Lease No. 378 approximately 14,643 feet to a point on the Southern boundary of State Lease No. 17339 having Coordinates of X = 2,337,073.93 and Y = 264,390.49; thence along the boundary of said State Lease No. 17339 for the following two courses: North 73 degrees 27 minutes 56 seconds East 2,436.84 feet to a point having Coordinates of X = 2,339,410.00 and Y = 265,084.00 and North 11 degrees 35 minutes 59 seconds West 1044.27 feet to the point of beginning, (This tract includes only waterbottoms claimed and owned by the state and specifically excludes any land which the state may claim or own and to which the mineral rights are vested in the state), **LESS AND EXCEPT** any right, title, and interest in lands owned by and not under lease from the State of Louisiana, on behalf of the Lafourche Parish School Board, situated in Section 16, Township 20 South, Range 22 East, Lafourche Parish, Louisiana, contained within the above described tract, containing approximately **114 acres**, all as more particularly outlined on a plat on file in the Office of Mineral Resources, Department of Natural Resources. All bearings, distances and coordinates are based on Louisiana Coordinate System of 1927, (North or South Zone), where applicable.

NOTE: The above description of the Tract nominated for lease has been provided and corrected, where required, exclusively by the nomination party. Any mineral lease selected from this Tract and awarded by the Louisiana State Mineral and Energy Board shall be without warranty of any kind, either express, implied, or statutory, including, but not limited to, the implied warranties of merchantability and fitness for a particular purpose. Should the mineral lease awarded by the Louisiana State Mineral and Energy Board be subsequently modified, cancelled or abrogated due to the existence of conflicting leases, operating agreements, private claims or other future obligations or conditions which may affect all or any portion of the leased Tract, it shall not relieve the Lessee of the obligation to pay any bonus due thereon to the Louisiana State Mineral and Energy Board, nor shall the Louisiana State Mineral and Energy Board be obligated to refund any consideration paid by the Lessor prior to such

modification, cancellation, or abrogation, including, but not limited to, bonuses, rentals and royalties.

NOTE: The State of Louisiana does hereby reserve, and this lease shall be subject to, the imprescriptible right of surface use in the nature of a servitude in favor of the Department of Natural Resources, including its Offices and Commissions, for the sole purpose of implementing, constructing, servicing and maintaining approved coastal zone management and/or restoration projects. Utilization of any and all rights derived under this lease by the mineral lessee, its agents, successors or assigns, shall not interfere with nor hinder the reasonable surface use by the Department of Natural Resources, its Offices or Commissions, as herein above reserved.

Applicant: KARE-SUE ENERGY, INC.

Bidder	Cash Payment	Price/Acre	Rental	Oil	Gas	Other

Legend

13110108



Active_Leases



DOQQ2008

LAFOURCHE PARISH

BAYOU LAFOURCHE

T19S - R22E

T20S - R22E

SL 17339

P.O.B.

SL 378

0 3,000 Feet



TRACT 43603 - Portion of Block 6, West Delta Area, Plaquemines Parish, Louisiana

All of the lands now or formerly constituting the beds and bottoms of all water bodies of every nature and description as to which title is vested in the State of Louisiana, together with all islands arising therein and other lands formed by accretion or by reliction, where allowed by law, excepting tax adjudicated lands, and not presently under mineral lease on November 13, 2013, situated in Plaquemines Parish, Louisiana, and more particularly described as follows: Beginning at a point having Coordinates of X = 2,538,872.00 and Y = 224,144.40; thence North 59 degrees 59 minutes 23 seconds West 7,798.16 feet to a point having Coordinates of X = 2,532,119.30 and Y = 228,044.70; thence North 60 degrees 13 minutes 24 seconds East 7,654.32 feet to a point having Coordinates of X = 2,538,763.00 and Y = 231,846.00; thence South 60 degrees 33 minutes 44 seconds East 3,935.06 feet to a point having Coordinates of X = 2,542,190.00 and Y = 229,912.00; thence South 70 degrees 15 minutes 23 seconds East 5,763.59 feet to a point having Coordinates of X = 2,547,614.77 and Y = 227,965.00; thence South 8,902.76 feet to a point having Coordinates of X = 2,547,614.77 and Y = 219,062.24; thence North 59 degrees 49 minutes 50 seconds West 10,112.59 feet to the point of beginning, containing approximately **2,193 acres**, all as more particularly outlined on a plat on file in the Office of Mineral Resources, Department of Natural Resources. All bearings, distances and coordinates are based on Louisiana Coordinate System of 1927, (North or South Zone), where applicable.

NOTE: The above description of the Tract nominated for lease has been provided and corrected, where required, exclusively by the nomination party. Any mineral lease selected from this Tract and awarded by the Louisiana State Mineral and Energy Board shall be without warranty of any kind, either express, implied, or statutory, including, but not limited to, the implied warranties of merchantability and fitness for a particular purpose. Should the mineral lease awarded by the Louisiana State Mineral and Energy Board be subsequently modified, cancelled or abrogated due to the existence of conflicting leases, operating agreements, private claims or other future obligations or conditions which may affect all or any portion of the leased Tract, it shall not relieve the Lessee of the obligation to pay any bonus due thereon to the Louisiana State Mineral and Energy Board, nor shall the Louisiana State Mineral and Energy Board be obligated to refund any consideration paid by the Lessor prior to such modification, cancellation, or abrogation, including, but not limited to, bonuses, rentals and royalties.

NOTE: The State of Louisiana does hereby reserve, and this lease shall be subject to, the imprescriptible right of surface use in the nature of a servitude in favor of the Department of Natural Resources, including its Offices and Commissions, for the sole purpose of implementing, constructing, servicing and maintaining approved coastal zone management and/or restoration projects. Utilization of any and all rights derived

under this lease by the mineral lessee, its agents, successors or assigns, shall not interfere with nor hinder the reasonable surface use by the Department of Natural Resources, its Offices or Commissions, as herein above reserved.

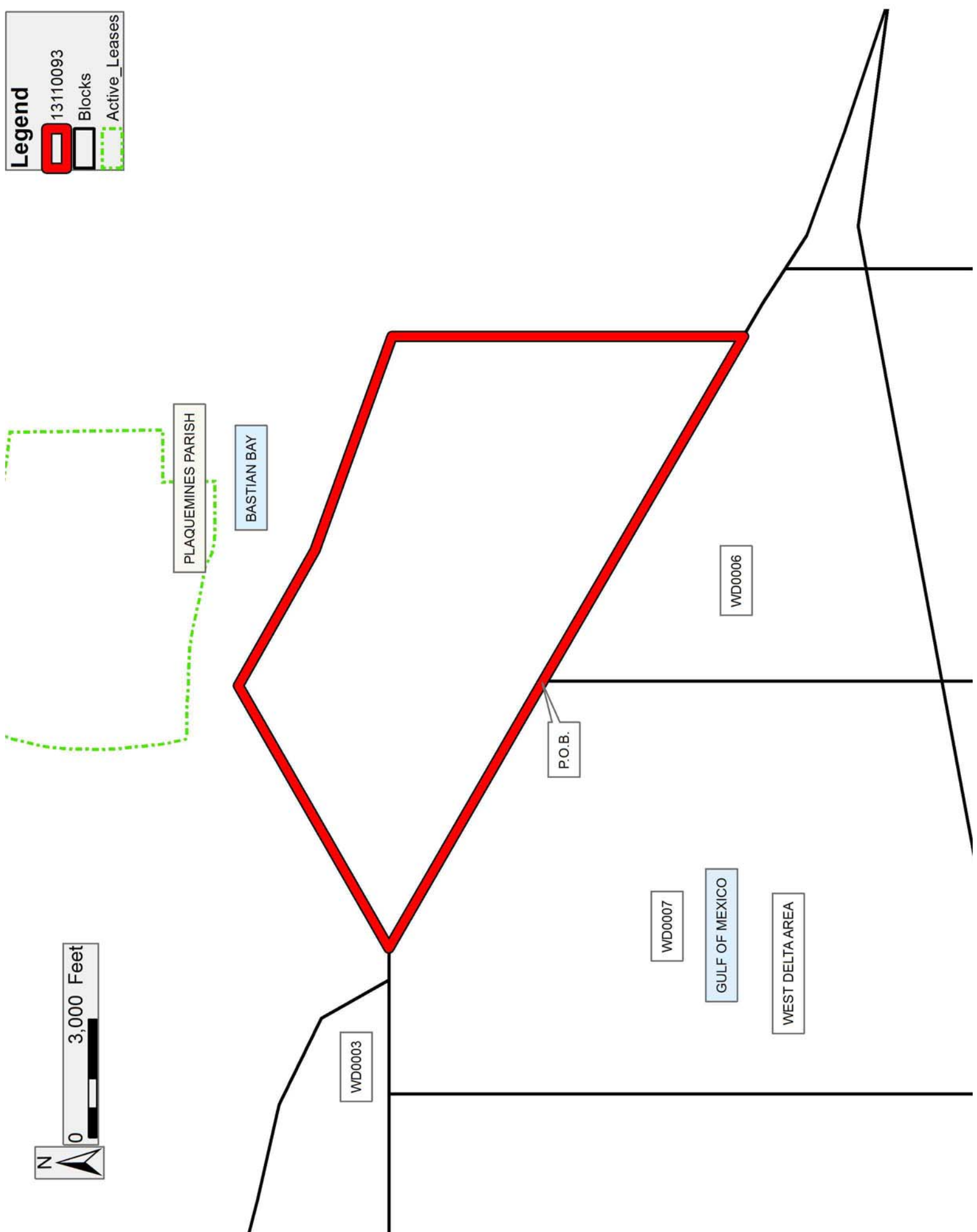
NOTE: It appears, according to our records, that a portion of this Tract is located within the restrictive safety fairway area as set out by the Corps of Engineers, U.S. Army and/or the restrictive anchorage area as set out by the U.S. Coast Guard.

Applicant: ROBERT A. SCHROEDER, INC.

Bidder	Cash Payment	Price/Acre	Rental	Oil	Gas	Other

Legend

- 13110093
- Blocks
- Active_Leases



TRACT 43604 - Portion of Block 82, Main Pass Area, Revised, Plaquemines Parish, Louisiana

All of the lands now or formerly constituting the beds and bottoms of all water bodies of every nature and description as to which title is vested in the State of Louisiana, together with all islands arising therein and other lands formed by accretion or by reliction, where allowed by law, excepting tax adjudicated lands, and not presently under mineral lease on November 13, 2013, situated in Plaquemines Parish, Louisiana, and more particularly described as follows: Beginning at a point within Block 82, Main Pass Area, Revised, having Coordinates of X = 2,704,914.38 and Y = 211,130.93; thence East approximately 5,127 feet to the Southwest corner of State Lease No. 1359, as amended; thence East approximately 2,249 feet along the South line of said State Lease No. 1359, as amended, to a point on the West boundary of State Lease No. 1357, as amended, having a Coordinate of Y = 211,130.93; thence Southerly approximately 3,031 feet along the West line of said State Lease No. 1357, as amended, to its Southwest corner having Coordinates of X = 2,712,290.00 and Y = 208,100.00; thence South 9,105.18 feet to a point on the Northern boundary of Pass-A-Loutre Wildlife Management Area having Coordinates of X = 2,712,290.00 and Y = 198,994.82; thence South 88 degrees 44 minutes 11 seconds West 7,377.41 feet along the Northern boundary of said Pass-A-Loutre to a point having Coordinates of X = 2,704,914.38 and Y = 198,832.13; thence North 12,298.80 feet to the to the point of beginning, containing approximately **1,951 acres**, all as more particularly outlined on a plat on file in the Office of Mineral Resources, Department of Natural Resources. All bearings, distances and coordinates are based on Louisiana Coordinate System of 1927, (North or South Zone), where applicable.

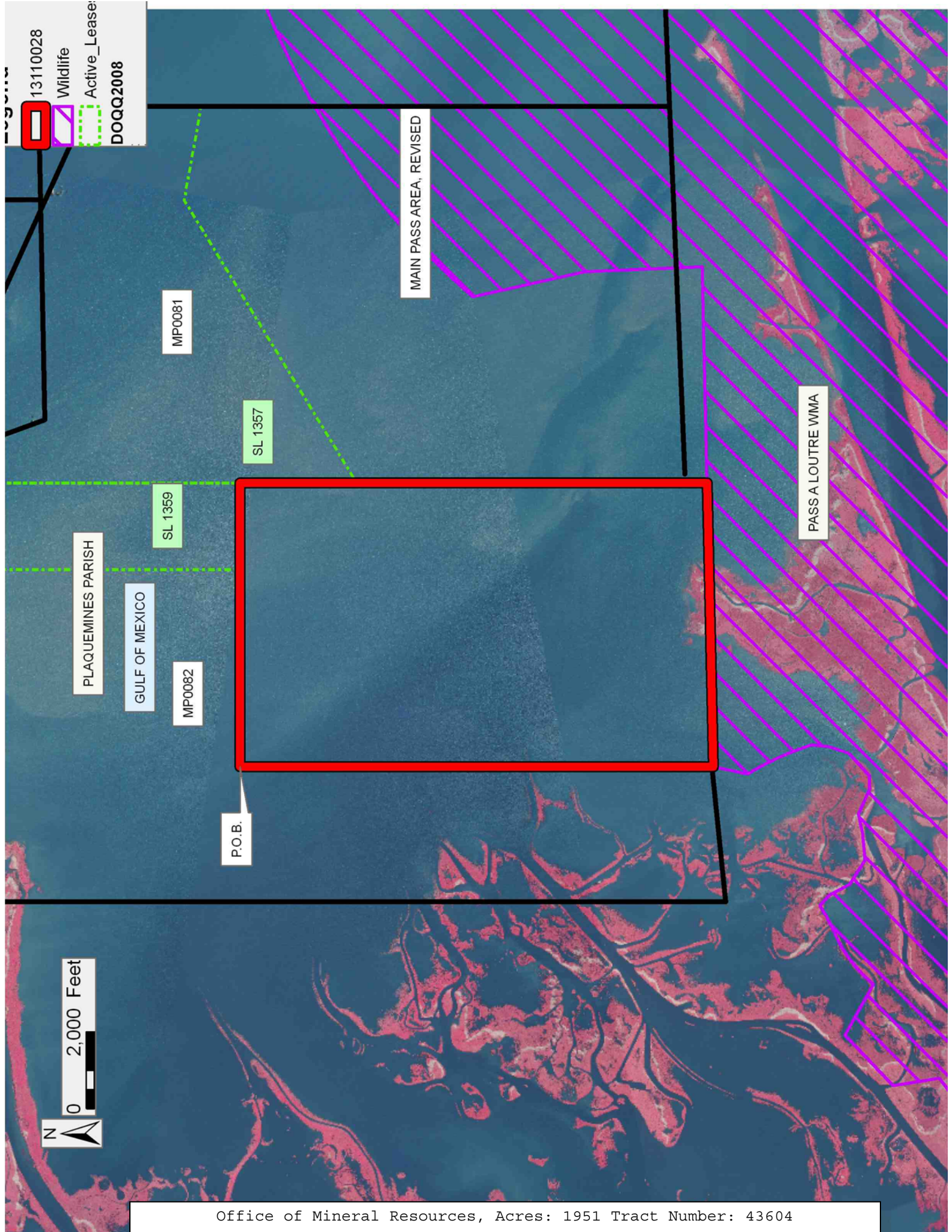
NOTE: The above description of the Tract nominated for lease has been provided and corrected, where required, exclusively by the nomination party. Any mineral lease selected from this Tract and awarded by the Louisiana State Mineral and Energy Board shall be without warranty of any kind, either express, implied, or statutory, including, but not limited to, the implied warranties of merchantability and fitness for a particular purpose. Should the mineral lease awarded by the Louisiana State Mineral and Energy Board be subsequently modified, cancelled or abrogated due to the existence of conflicting leases, operating agreements, private claims or other future obligations or conditions which may affect all or any portion of the leased Tract, it shall not relieve the Lessee of the obligation to pay any bonus due thereon to the Louisiana State Mineral and Energy Board, nor shall the Louisiana State Mineral and Energy Board be obligated to refund any consideration paid by the Lessor prior to such modification, cancellation, or abrogation, including, but not limited to, bonuses, rentals and royalties.

NOTE: The State of Louisiana does hereby reserve, and this lease shall be subject to, the imprescriptible right of surface use in the nature of a servitude in favor of the Department of Natural Resources, including its Offices and Commissions, for the sole purpose of implementing,

constructing, servicing and maintaining approved coastal zone management and/or restoration projects. Utilization of any and all rights derived under this lease by the mineral lessee, its agents, successors or assigns, shall not interfere with nor hinder the reasonable surface use by the Department of Natural Resources, its Offices or Commissions, as herein above reserved.

Applicant: JIL EXPLORATION, INC.

Bidder	Cash Payment	Price/Acre	Rental	Oil	Gas	Other



13110028
Wildlife
Active Lease:
DOQQ2008

PLAQUEMINES PARISH

GULF OF MEXICO

SL 1359

MP0081

SL 1357

MP0082

P.O.B.

MAIN PASS AREA, REVISED

PASS A LOUTRE WMA

0 2,000 Feet



TRACT 43605 - Portion of Block 82, Main Pass Area, Revised, Plaquemines Parish, Louisiana

All of the lands now or formerly constituting the beds and bottoms of all water bodies of every nature and description as to which title is vested in the State of Louisiana, together with all islands arising therein and other lands formed by accretion or by reliction, where allowed by law, excepting tax adjudicated lands, and not presently under mineral lease on November 13, 2013, situated in Plaquemines Parish, Louisiana, and more particularly described as follows: Beginning at a point within Block 82, Main Pass Area, Revised, having Coordinates of X = 2,704,914.38 and Y = 211,130.93; thence South 12,298.80 feet to a point on the Northern boundary of Pass-A-Loutre Wildlife Management Area having Coordinates of X = 2,704,914.38 and Y = 198,832.13; thence along the boundary of said Pass-A-Loutre the following courses: South 12 degrees 06 minutes 24 seconds West 911.27 feet to a point having Coordinates of X = 2,704,723.26 and Y = 197,941.13; Southeasterly along an arc having a radius of 8,225.00 feet and a center at X = 2,697,655.60 and Y = 193,734.13 to a point having Coordinates of X = 2,705,480.47 and Y = 196,268.31; South 06 degrees 29 minutes 58 seconds West 454.10 feet to a point having Coordinates of X = 2,705,429.07 and Y = 195,817.13; South 18 degrees 04 minutes 18 seconds West 532.58 feet to a point having Coordinates of X = 2,705,263.86 and Y = 195,310.82; South 47 degrees 33 minutes 37 seconds West 799.89 feet to a point having Coordinates of X = 2,704,673.55 and Y = 194,771.04; North 89 degrees 36 minutes 00 seconds West 339.43 feet to a point having Coordinates of X = 2,704,334.13 and Y = 194,773.41; North 65 degrees 51 minutes 42 seconds West 710.18 feet to a point having Coordinates of X = 2,703,686.05 and Y = 195,063.83; South 78 degrees 06 minutes 09 seconds West 535.65 feet to a point having Coordinates of X = 2,703,161.91 and Y = 194,953.40; South 85 degrees 08 minutes 56 seconds West 680.19 feet to a point having Coordinates of X = 2,702,484.16 and Y = 194,895.88; North 57 degrees 53 minutes 08 seconds West 750.62 feet to a point having Coordinates of X = 2,701,848.39 and Y = 195,294.92; North 27 degrees 56 minutes 17 seconds West 601.97 feet to a point having Coordinates of X = 2,701,566.36 and Y = 195,826.73; and North 48 degrees 11 minutes 50 seconds West 236.58 feet to a point on the West line of said Block 82 having Coordinates of X = 2,701,390.00 and Y = 195,984.43; thence North 15,146.50 feet along the West line of said Block 82 to a point having Coordinates of X = 2,701,390.00 and Y = 211,130.93; thence East 3,524.38 feet to the to the point of beginning, containing approximately **439 acres**, all as more particularly outlined on a plat on file in the Office of Mineral Resources, Department of Natural Resources. All bearings, distances and coordinates are based on Louisiana Coordinate System of 1927, (North or South Zone), where applicable.

NOTE: The above description of the Tract nominated for lease has been provided and corrected, where required, exclusively by the nomination party. Any mineral lease selected from this Tract and awarded by the Louisiana State Mineral and Energy Board shall be without warranty of any kind, either express, implied, or statutory, including, but not limited

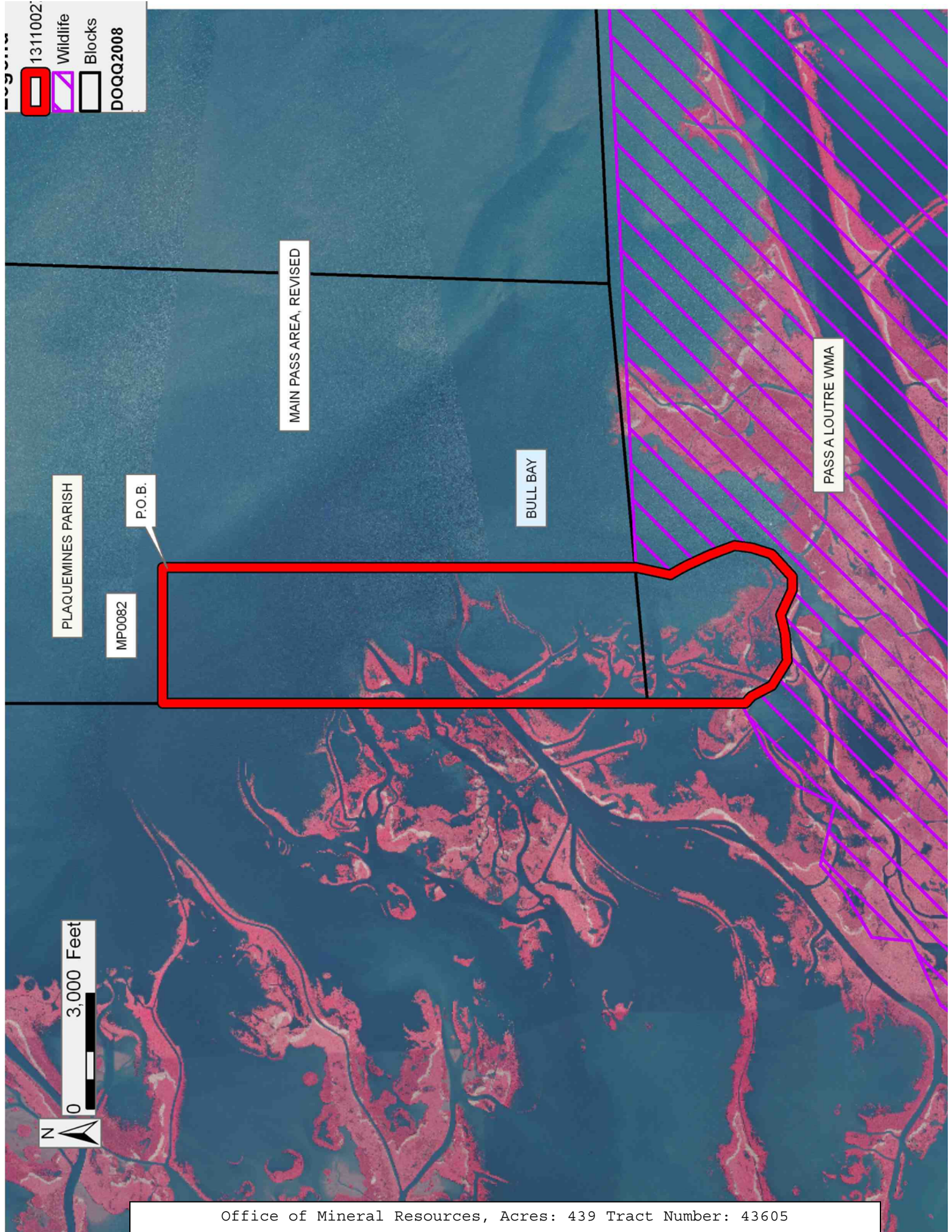
to, the implied warranties of merchantability and fitness for a particular purpose. Should the mineral lease awarded by the Louisiana State Mineral and Energy Board be subsequently modified, cancelled or abrogated due to the existence of conflicting leases, operating agreements, private claims or other future obligations or conditions which may affect all or any portion of the leased Tract, it shall not relieve the Lessee of the obligation to pay any bonus due thereon to the Louisiana State Mineral and Energy Board, nor shall the Louisiana State Mineral and Energy Board be obligated to refund any consideration paid by the Lessor prior to such modification, cancellation, or abrogation, including, but not limited to, bonuses, rentals and royalties.

NOTE: The State of Louisiana does hereby reserve, and this lease shall be subject to, the imprescriptible right of surface use in the nature of a servitude in favor of the Department of Natural Resources, including its Offices and Commissions, for the sole purpose of implementing, constructing, servicing and maintaining approved coastal zone management and/or restoration projects. Utilization of any and all rights derived under this lease by the mineral lessee, its agents, successors or assigns, shall not interfere with nor hinder the reasonable surface use by the Department of Natural Resources, its Offices or Commissions, as herein above reserved.

Applicant: JIL EXPLORATION, INC.

Bidder	Cash Payment	Price/Acre	Rental	Oil	Gas	Other

1311002
 Wildlife
 Blocks
 DOQQ2008



PLAQUEMINES PARISH

P.O.B.

MP0082

MAIN PASS AREA, REVISED

BULL BAY

PASS A LOUTRE WMA

0 3,000 Feet



TRACT 43606 - Portion of Blocks 81, and 82, Main Pass Area, Revised, Plaquemines Parish, Louisiana

All of the lands now or formerly constituting the beds and bottoms of all water bodies of every nature and description as to which title is vested in the State of Louisiana, together with all islands arising therein and other lands formed by accretion or by reliction, where allowed by law, excepting tax adjudicated lands, and not presently under mineral lease on November 13, 2013, situated in Plaquemines Parish, Louisiana, and more particularly described as follows: Beginning at a point on the West line of Block 81, Main Pass Area, Revised, said point also being on the Northern boundary of Pass-A-Loutre Wildlife Management Area, having Coordinates of X = 2,712,290.00 and Y = 198,994.82; thence North 9,105.18 feet along the West line of said Block 81 to the Southwest corner of State Lease No. 1357, as amended, having Coordinates of X = 2,712,290.00 and Y = 208,100.00; thence North 58 degrees 38 minutes 12 seconds East 2,949.01 feet along the South line of said State Lease No. 1357, as amended, to a point having Coordinates of X = 2,714,808.11 and Y = 209,634.85; thence South 1.59 feet to the Northwest corner of State Lease No. 18479 having Coordinates of X = 2,714,808.11 and Y = 209,633.26; thence along the boundary of said State Lease No. 18479 the following courses: South 3,724.42 feet to a point having Coordinates of X = 2,714,808.11 and Y = 205,908.84 and East 3,087.03 feet on to a point on the Northern boundary of Pass-A-Loutre Wildlife Management Area having Coordinates of X = 2,717,895.14 and Y = 205,908.84; thence along the boundary of said Pass-A-Loutre Wildlife Management Area the following courses: Southwesterly along an arc having a radius of 19,550.00 feet and a center at X = 2,731,935.94 and Y = 192,305.22 to a point having Coordinates of X = 2,717,128.07 and Y = 205,069.60; South 12 degrees 41 minutes 24 seconds East 2,972.05 feet to a point having Coordinates of X = 2,717,780.96 and Y = 202,170.15; South 02 degrees 28 minutes 20 seconds East 3,054.14 feet to a point having Coordinates of X = 2,717,912.70 and Y = 199,118.85; and South 88 degrees 44 minutes 11 seconds West 5,624.07 feet to the Point of Beginning, containing **1,012.50 acres**, all as more particularly outlined on a plat on file in the Office of Mineral Resources, Department of Natural Resources. All bearings, distances and coordinates are based on Louisiana Coordinate System of 1927, (North or South Zone), where applicable.

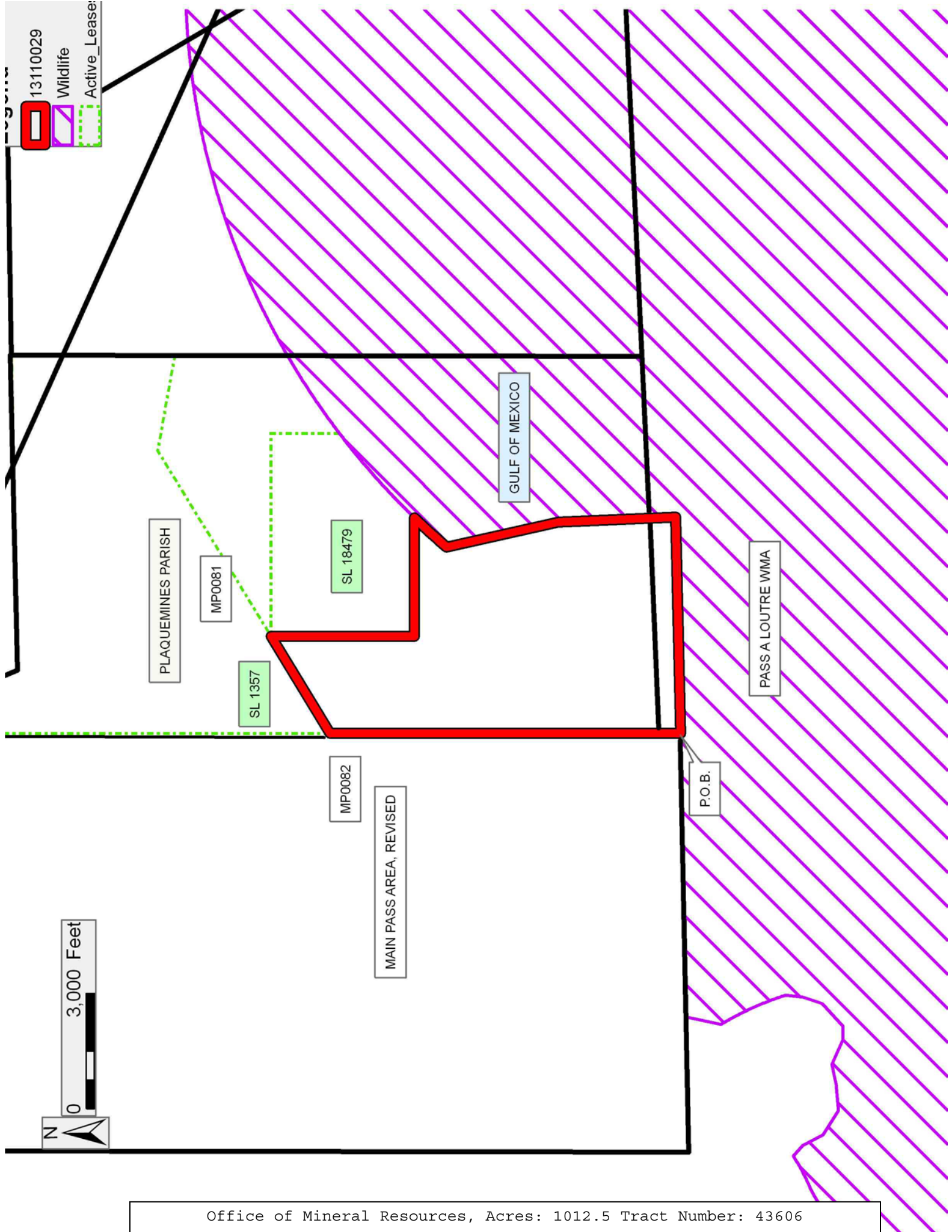
NOTE: The above description of the Tract nominated for lease has been provided and corrected, where required, exclusively by the nomination party. Any mineral lease selected from this Tract and awarded by the Louisiana State Mineral and Energy Board shall be without warranty of any kind, either express, implied, or statutory, including, but not limited to, the implied warranties of merchantability and fitness for a particular purpose. Should the mineral lease awarded by the Louisiana State Mineral and Energy Board be subsequently modified, cancelled or abrogated due to the existence of conflicting leases, operating agreements, private claims or other future obligations or conditions which may affect all or any portion of the leased Tract, it shall not relieve the Lessee of the obligation to pay any bonus due thereon to the Louisiana State Mineral and

Energy Board, nor shall the Louisiana State Mineral and Energy Board be obligated to refund any consideration paid by the Lessor prior to such modification, cancellation, or abrogation, including, but not limited to, bonuses, rentals and royalties.

NOTE: The State of Louisiana does hereby reserve, and this lease shall be subject to, the imprescriptible right of surface use in the nature of a servitude in favor of the Department of Natural Resources, including its Offices and Commissions, for the sole purpose of implementing, constructing, servicing and maintaining approved coastal zone management and/or restoration projects. Utilization of any and all rights derived under this lease by the mineral lessee, its agents, successors or assigns, shall not interfere with nor hinder the reasonable surface use by the Department of Natural Resources, its Offices or Commissions, as herein above reserved.

Applicant: JIL EXPLORATION, INC.

Bidder	Cash Payment	Price/Acre	Rental	Oil	Gas	Other



TRACT 43607 - Portion of Block 76, Main Pass Area, Revised, and Block 2, South Pass Area, Plaquemines Parish, Louisiana

All of the lands now or formerly constituting the beds and bottoms of all water bodies of every nature and description as to which title is vested in the State of Louisiana, together with all islands arising therein and other lands formed by accretion or by reliction, where allowed by law, excepting tax adjudicated lands, and not presently under mineral lease on November 13, 2013, situated in Plaquemines Parish, Louisiana, and more particularly described as follows: Beginning at a point on the Louisiana Coastline, as decreed by the Supreme Court of the United States, as determined by a Special Master appointed therein, in litigation styled *United States v. State of Louisiana et al No. 9 Original*, in 1975, said point also being on the North line of Block 76, Main Pass Area, Revised, having Coordinates of X = 2,754,948.30 and Y = 200,214.00; thence Southwesterly on a straight line along said Coastline to a point having Coordinates of X = 2,754,613.87 and Y = 194,971.01; thence West 5,863.87 feet to a point on the West line of said Block 76, said point also being on the East line of Block 2, South Pass Area, having Coordinates of X = 2,748,750.00 and Y = 194,971.01; thence West 1,226.15 feet to a point on the Eastern boundary of Pass-A-Loutre Wildlife Management Area having Coordinates of X = 2,747,523.85 and Y = 194,971.01; thence Northwesterly along the Eastern boundary of said Pass-A-Loutre Wildlife Management Area along an arc with a radius of 21,825.00 feet and a center at X = 2,725,759.55 and Y = 193,344.35 to a point on the North line of said Block 2 having Coordinates of X = 2,745,346.26 and Y = 202,972.00; thence East 3,403.75 feet along the North line of said Block 2 to its Northeast corner having Coordinates of X = 2,748,750.00 and Y = 202,972.00; thence South 2,758.00 feet along the East line of said Block 2 to the Northeast corner of said Block 76 having Coordinates of X = 2,748,750.00 and Y = 200,214.00; thence East 6,198.30 feet to along the North line of said Block 76 to the point of beginning, containing **1,100.59 acres**, all as more particularly outlined on a plat on file in the Office of Mineral Resources, Department of Natural Resources. All bearings, distances and coordinates are based on Louisiana Coordinate System of 1927, (North or South Zone), where applicable.

NOTE: The above description of the Tract nominated for lease has been provided and corrected, where required, exclusively by the nomination party. Any mineral lease selected from this Tract and awarded by the Louisiana State Mineral and Energy Board shall be without warranty of any kind, either express, implied, or statutory, including, but not limited to, the implied warranties of merchantability and fitness for a particular purpose. Should the mineral lease awarded by the Louisiana State Mineral and Energy Board be subsequently modified, cancelled or abrogated due to the existence of conflicting leases, operating agreements, private claims or other future obligations or conditions which may affect all or any portion of the leased Tract, it shall not relieve the Lessee of the obligation to pay any bonus due thereon to the Louisiana State Mineral and Energy Board, nor shall the Louisiana State Mineral and Energy Board be

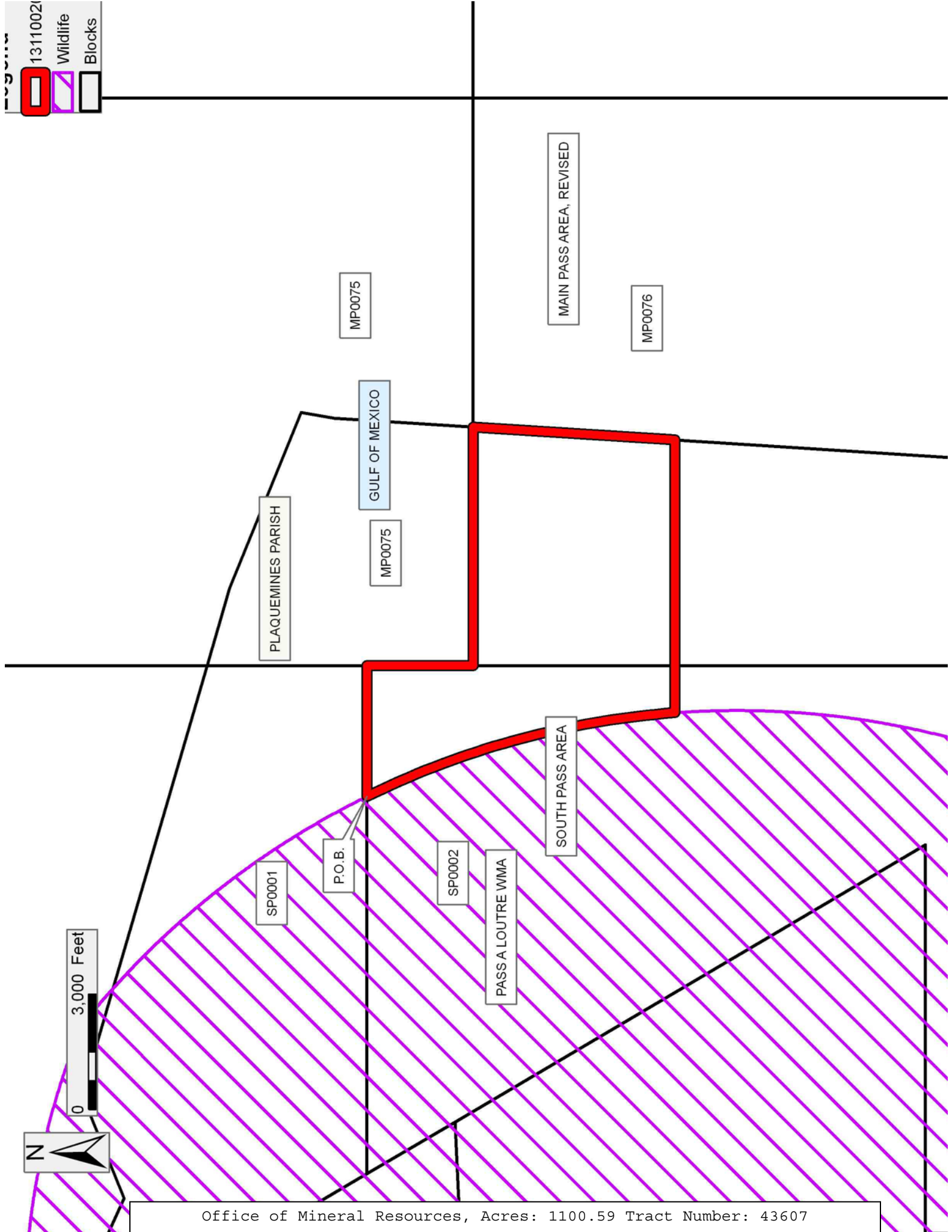
obligated to refund any consideration paid by the Lessor prior to such modification, cancellation, or abrogation, including, but not limited to, bonuses, rentals and royalties.

NOTE: The State of Louisiana does hereby reserve, and this lease shall be subject to, the imprescriptible right of surface use in the nature of a servitude in favor of the Department of Natural Resources, including its Offices and Commissions, for the sole purpose of implementing, constructing, servicing and maintaining approved coastal zone management and/or restoration projects. Utilization of any and all rights derived under this lease by the mineral lessee, its agents, successors or assigns, shall not interfere with nor hinder the reasonable surface use by the Department of Natural Resources, its Offices or Commissions, as herein above reserved.

Applicant: JIL EXPLORATION, INC.

Bidder	Cash Payment	Price/Acre	Rental	Oil	Gas	Other

13110021
 Wildlife
 Blocks



0 3,000 Feet

TRACT 43608 - Portion of Block 76, Main Pass Area, Revised, and Block 2, South Pass Area, Plaquemines Parish, Louisiana

All of the lands now or formerly constituting the beds and bottoms of all water bodies of every nature and description as to which title is vested in the State of Louisiana, together with all islands arising therein and other lands formed by accretion or by reliction, where allowed by law, excepting tax adjudicated lands, and not presently under mineral lease on November 13, 2013, situated in Plaquemines Parish, Louisiana, and more particularly described as follows: Beginning at a point on the Louisiana Coastline, as decreed by the Supreme Court of the United States, as determined by a Special Master appointed therein, in litigation styled *United States v. State of Louisiana et al No. 9 Original*, in 1975, said point also being on the South line of Block 76, Main Pass Area, Revised, having Coordinates of X = 2,754,149.18 and Y = 185,456.00; thence West 5,399.18 feet along the South line of said Block 76 to the Southeast corner of Block 2, South Pass Area having Coordinates of X = 2,748,750.00 and Y = 185,456.00; thence West 2,640.89 feet along the South line of said Block 2 to a point on the Eastern boundary of Pass-A-Loutre Wildlife Management Area having Coordinates of X = 2,746,109.11 and Y = 185,456.00; thence Northeasterly along the Eastern boundary of said Pass-A-Loutre Wildlife Management Area along an arc with a radius of 21,825.00 feet and a center at X = 2,725,759.55 and Y = 193,344.35 to a point having Coordinates of X = 2,747,523.85 and Y = 194,971.01; thence East 1,226.15 feet to a point on the common line between said Block 2 and said Block 76 having Coordinates of X = 2,748,750.00 and Y = 194,971.01; thence East 5,863.87 feet to a point on the said Coastline having Coordinates of X = 2,754,613.87 and Y = 194,971.01; thence along the boundary of said Coastline the following courses: Southwesterly on a straight line to a point having Coordinates of X = 2,754,100 and Y = 186,915; Southeasterly on a straight line to a point having Coordinates of X = 2,754,263 and Y = 186,316; and Southwesterly on a straight line to the point of beginning, containing **1,562.51 acres**, all as more particularly outlined on a plat on file in the Office of Mineral Resources, Department of Natural Resources. All bearings, distances and coordinates are based on Louisiana Coordinate System of 1927, (North or South Zone), where applicable.

NOTE: The above description of the Tract nominated for lease has been provided and corrected, where required, exclusively by the nomination party. Any mineral lease selected from this Tract and awarded by the Louisiana State Mineral and Energy Board shall be without warranty of any kind, either express, implied, or statutory, including, but not limited to, the implied warranties of merchantability and fitness for a particular purpose. Should the mineral lease awarded by the Louisiana State Mineral and Energy Board be subsequently modified, cancelled or abrogated due to the existence of conflicting leases, operating agreements, private claims or other future obligations or conditions which may affect all or any portion of the leased Tract, it shall not relieve the Lessee of the obligation to pay any bonus due thereon to the Louisiana State Mineral and Energy Board, nor shall the Louisiana State Mineral and Energy Board be

obligated to refund any consideration paid by the Lessor prior to such modification, cancellation, or abrogation, including, but not limited to, bonuses, rentals and royalties.

NOTE: The State of Louisiana does hereby reserve, and this lease shall be subject to, the imprescriptible right of surface use in the nature of a servitude in favor of the Department of Natural Resources, including its Offices and Commissions, for the sole purpose of implementing, constructing, servicing and maintaining approved coastal zone management and/or restoration projects. Utilization of any and all rights derived under this lease by the mineral lessee, its agents, successors or assigns, shall not interfere with nor hinder the reasonable surface use by the Department of Natural Resources, its Offices or Commissions, as herein above reserved.

Applicant: JIL EXPLORATION, INC.

Bidder	Cash Payment	Price/Acre	Rental	Oil	Gas	Other

1311002
 Wildlife
 Blocks

