

TRACT 43621 - Plaquemines Parish, Louisiana

All State owned lands and water bottoms located within the boundaries of the Pass-A-Loutre Wildlife Management Area as defined by the Department of Wildlife and Fisheries incorporating a title opinion from the Office of the Governor dated August 3, 1998, not presently under mineral lease by the State of Louisiana on November 13, 2013, all as set forth following: Beginning at a point within the Pass-A-Loutre Wildlife Management Area having Coordinates of X = 2,735,511.45 and Y = 186,970.00; thence South 9,992.46 feet to a point having Coordinates of X = 2,735,511.45 and Y = 176,977.54; thence West 10,898.22 feet to a point having Coordinates of X = 2,724,613.24 and Y = 176,977.54; thence North 9,992.46 feet to a point having Coordinates of X = 2,724,613.24 and Y = 186,970.00; thence East 10,898.22 feet to the point of beginning, **LESS AND EXCEPT** any privately owned land that may be located within the above described Tract, if any, said tract containing approximately **2,500.00 acres**, all as more particularly outlined on a plat on file in the Office of Mineral Resources, Department of Natural Resources. All bearings, distances and coordinates are based on Louisiana Coordinate System of 1927, (South Zone).

NOTE: The above description of the Tract nominated for lease has been provided and corrected, where required, exclusively by the nomination party. Any mineral lease selected from this Tract and awarded by the Louisiana State Mineral and Energy Board shall be without warranty of any kind, either express, implied, or statutory, including, but not limited to, the implied warranties of merchantability and fitness for a particular purpose. Should the mineral lease awarded by the Louisiana State Mineral and Energy Board be subsequently modified, cancelled or abrogated due to the existence of conflicting leases, operating agreements, private claims or other future obligations or conditions which may affect all or any portion of the leased Tract, it shall not relieve the Lessee of the obligation to pay any bonus due thereon to the Louisiana State Mineral and Energy Board, nor shall the Louisiana State Mineral and Energy Board be obligated to refund any consideration paid by the Lessor prior to such modification, cancellation, or abrogation, including, but not limited to, bonuses, rentals and royalties.

NOTE: The mineral lease is located in the Pass-A-Loutre WMA under the jurisdiction of the Louisiana Department of Wildlife and Fisheries which has promulgated rules and regulations for the protection of game and wildlife on the aforesaid Tract and, therefore, shall be subject to said rules and regulations, a copy of which shall be attached to the mineral lease. In addition to the specific rules and regulations applicable, the following shall apply regarding operations under this mineral lease:

NOTE: No activities will be allowed without written authorization from the Louisiana Department of Wildlife and Fisheries.

NOTE: Proposed projects will be evaluated on a case by case basis. Modifications to proposed project features including but not limited to

access routes, spoil placement, well sites, flowlines and appurtenant structures may be required by the Department of Wildlife and Fisheries.

NOTE: Compliance with the said WMA regulations will be required unless otherwise specified by the Department of Wildlife and Fisheries.

NOTE: Compensatory mitigation will be required to offset unavoidable wetland impacts.

NOTE: Removal of all structures, facilities and equipment will be required within 120 days of abandonment unless otherwise agreed to in writing by the Louisiana Department of Wildlife and Fisheries.

NOTE: No activities will be allowed during the hunting season unless approved by the Department.

NOTE: Prior to submitting applications for wetland permits to Federal and State permitting agencies the leaseholder shall coordinate project details with the Department of Wildlife and Fisheries. Contact person for the Department will be Mike Windham at (504) 284-5268.

NOTE: The Department of Wildlife & Fisheries will require a minimum bonus of \$350 per acre and a minimum royalty of 25%.

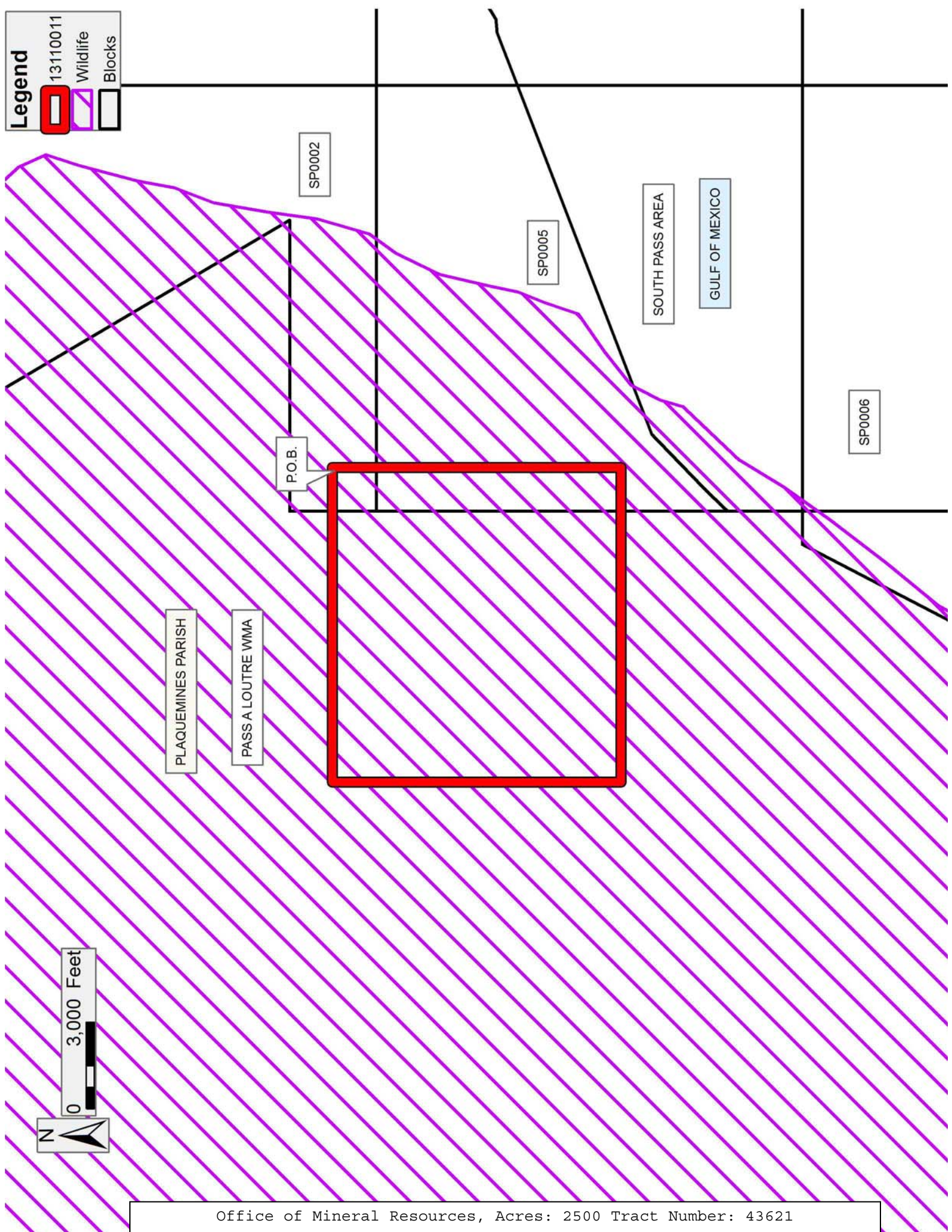
NOTE: The State of Louisiana does hereby reserve, and this lease shall be subject to, the imprescriptible right of surface use in the nature of a servitude in favor of the Department of Natural Resources, including its Offices and Commissions, for the sole purpose of implementing, constructing, servicing and maintaining approved coastal zone management and/or restoration projects. Utilization of any and all rights derived under this lease by the mineral lessee, its agents, successors or assigns, shall not interfere with nor hinder the reasonable surface use by the Department of Natural Resources, its Offices or Commissions, as herein above reserved.

Applicant: JIL EXPLORATION, INC.

Bidder	Cash Payment	Price/Acre	Rental	Oil	Gas	Other

Legend

- 13110011
- Wildlife
- Blocks



0 3,000 Feet



TRACT 43622 - Plaquemines Parish, Louisiana

All State owned lands and water bottoms located within the boundaries of the Pass-A-Loutre Wildlife Management Area as defined by the Department of Wildlife and Fisheries incorporating a title opinion from the Office of the Governor dated August 3, 1998, not presently under mineral lease by the State of Louisiana on November 13, 2013, all as set forth following: Beginning at a point inside the Pass-A-Loutre Wildlife Management Area having Coordinates of X = 2,735,511.45 and Y = 186,970.00; thence East 11,121.48 feet to a point on said Pass-A-Loutre Wildlife Management Area having Coordinates of X = 2,746,632.93 and Y = 186,970.00; thence along the boundary of said Pass-A-Loutre Wildlife Management Area the following courses: Southwesterly along an arc with a radius of 21,825.00 feet and a center at X = 2,725,759.55 and Y = 193,344.35 to a point having Coordinates of X = 2,745,718.34 and Y = 184,513.88; and South 27 degrees 15 minutes 54 seconds West 8,478.29 feet to a point having Coordinates of X = 2,741,834.40 and Y = 176,977.54; thence West 6,322.94 feet to a point having Coordinates of X = 2,735,511.45 and Y = 176,977.54; 73thence North 9,992.46 feet to the point of beginning, **LESS AND EXCEPT** any privately owned land that may be located within the above described Tract, if any, containing **2,032.79 acres**, all as more particularly outlined on a plat on file in the Office of Mineral Resources, Department of Natural Resources. All bearings, distances and coordinates are based on Louisiana Coordinate System of 1927, (South Zone).

NOTE: The above description of the Tract nominated for lease has been provided and corrected, where required, exclusively by the nomination party. Any mineral lease selected from this Tract and awarded by the Louisiana State Mineral and Energy Board shall be without warranty of any kind, either express, implied, or statutory, including, but not limited to, the implied warranties of merchantability and fitness for a particular purpose. Should the mineral lease awarded by the Louisiana State Mineral and Energy Board be subsequently modified, cancelled or abrogated due to the existence of conflicting leases, operating agreements, private claims or other future obligations or conditions which may affect all or any portion of the leased Tract, it shall not relieve the Lessee of the obligation to pay any bonus due thereon to the Louisiana State Mineral and Energy Board, nor shall the Louisiana State Mineral and Energy Board be obligated to refund any consideration paid by the Lessor prior to such modification, cancellation, or abrogation, including, but not limited to, bonuses, rentals and royalties.

NOTE: The mineral lease is located in the Pass-A-Loutre WMA under the jurisdiction of the Louisiana Department of Wildlife and Fisheries which has promulgated rules and regulations for the protection of game and wildlife on the aforesaid Tract and, therefore, shall be subject to said rules and regulations, a copy of which shall be attached to the mineral lease. In addition to the specific rules and regulations applicable, the following shall apply regarding operations under this mineral lease:

NOTE: No activities will be allowed without written authorization from the Louisiana Department of Wildlife and Fisheries.

NOTE: Proposed projects will be evaluated on a case by case basis. Modifications to proposed project features including but not limited to access routes, spoil placement, well sites, flowlines and appurtenant structures may be required by the Department of Wildlife and Fisheries.

NOTE: Compliance with the said WMA regulations will be required unless otherwise specified by the Department of Wildlife and Fisheries.

NOTE: Compensatory mitigation will be required to offset unavoidable wetland impacts.

NOTE: Removal of all structures, facilities and equipment will be required within 120 days of abandonment unless otherwise agreed to in writing by the Louisiana Department of Wildlife and Fisheries.

NOTE: No activities will be allowed during the hunting season unless approved by the Department.

NOTE: Prior to submitting applications for wetland permits to Federal and State permitting agencies the leaseholder shall coordinate project details with the Department of Wildlife and Fisheries. Contact person for the Department will be Mike Windham at (504) 284-5268.

NOTE: The Department of Wildlife & Fisheries will require a minimum bonus of \$350 per acre and a minimum royalty of 25%.

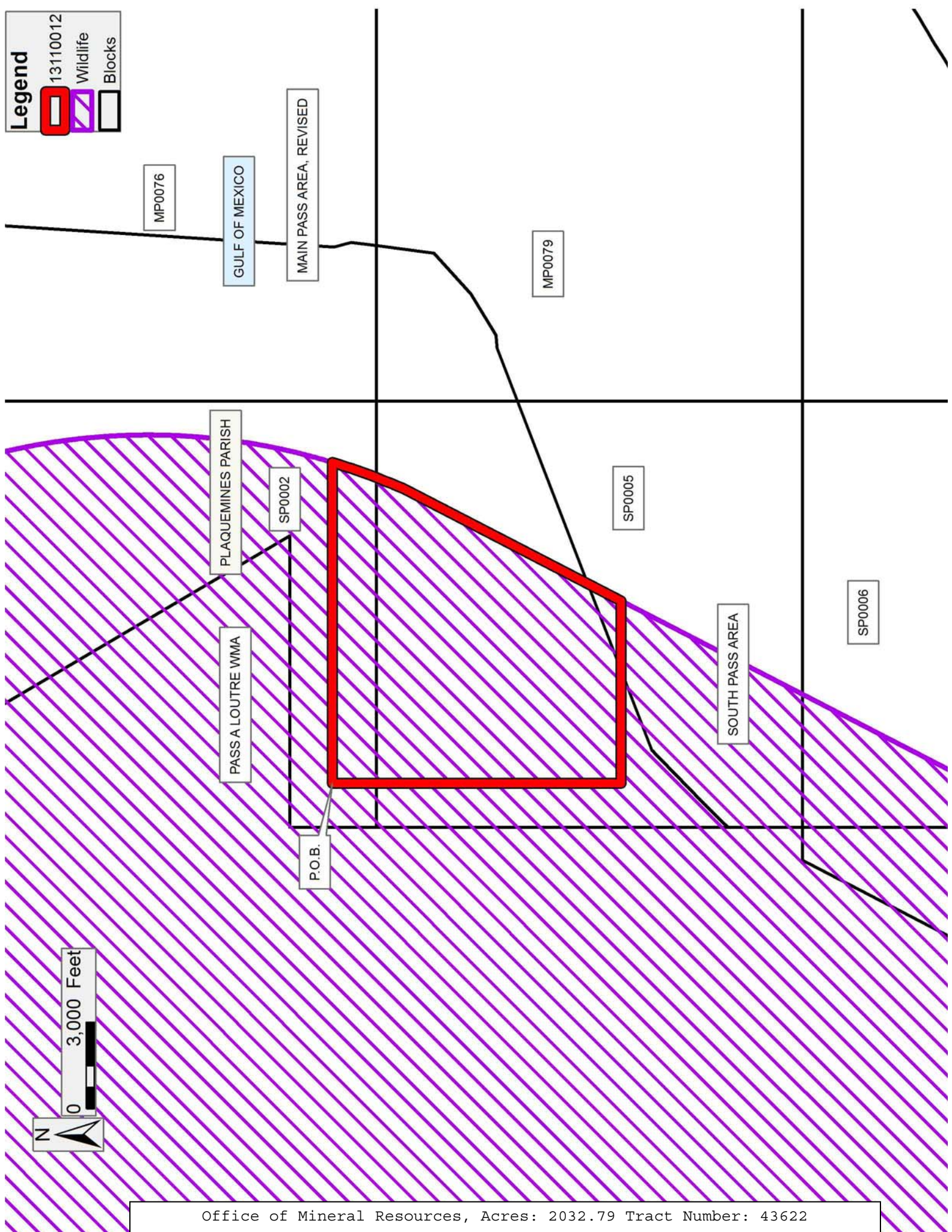
NOTE: The State of Louisiana does hereby reserve, and this lease shall be subject to, the imprescriptible right of surface use in the nature of a servitude in favor of the Department of Natural Resources, including its Offices and Commissions, for the sole purpose of implementing, constructing, servicing and maintaining approved coastal zone management and/or restoration projects. Utilization of any and all rights derived under this lease by the mineral lessee, its agents, successors or assigns, shall not interfere with nor hinder the reasonable surface use by the Department of Natural Resources, its Offices or Commissions, as herein above reserved.

Applicant: JIL EXPLORATION, INC.

Bidder	Cash Payment	Price/Acre	Rental	Oil	Gas	Other

Legend

- 13110012
- Wildlife
- Blocks



MP00076

GULF OF MEXICO

MAIN PASS AREA, REVISED

MP00079

PLAQUEMINES PARISH

SP00002

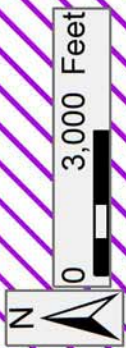
SP00005

PASS A LOUITRE WMA

SOUTH PASS AREA

SP00006

P.O.B.



TRACT 43623 - Plaquemines Parish, Louisiana

All State owned lands and water bottoms located within the boundaries of the Pass-A-Loutre Wildlife Management Area as defined by the Department of Wildlife and Fisheries incorporating a title opinion from the Office of the Governor dated August 3, 1998, not presently under mineral lease by the State of Louisiana on November 13, 2013, all as set forth following: Beginning at a point within the Pass-A-Loutre Wildlife Management Area having Coordinates of X = 2,704,673.55 and Y = 186,970.00; thence East 5,376.45 feet to a point having Coordinates of X = 2,710,050.00 and Y = 186,970.00; thence South 9,112.00 feet to the Northeast corner of State Lease No. 19677 having Coordinates of X = 2,710,050.00 and Y = 177,858.00; thence along the boundary of said State Lease No. 19677 the following courses: West 4,715.13 feet to a point having Coordinates of X = 2,705,334.87 and Y = 177,858.00, South 2,858.00 feet to a point having Coordinates of X = 2,705,334.87 and Y = 175,000.00, and East 4,715.13 feet to its Southeast corner having Coordinates of X = 2,710,050.00 and Y = 175,000.00; thence South 751.25 feet to a point having Coordinates of X = 2,710,050.00 and Y = 174,248.75; thence West 5,376.45 feet to a point having Coordinates of X = 2,704,673.55 and Y = 174,248.75; thence North 12,721.25 feet to the point of beginning, **LESS AND EXCEPT** any privately owned land that may be located within the above described Tract, if any, said tract containing **1,260.77 acres**, all as more particularly outlined on a plat on file in the Office of Mineral Resources, Department of Natural Resources. All bearings, distances and coordinates are based on Louisiana Coordinate System of 1927, (South Zone).

NOTE: The above description of the Tract nominated for lease has been provided and corrected, where required, exclusively by the nomination party. Any mineral lease selected from this Tract and awarded by the Louisiana State Mineral and Energy Board shall be without warranty of any kind, either express, implied, or statutory, including, but not limited to, the implied warranties of merchantability and fitness for a particular purpose. Should the mineral lease awarded by the Louisiana State Mineral and Energy Board be subsequently modified, cancelled or abrogated due to the existence of conflicting leases, operating agreements, private claims or other future obligations or conditions which may affect all or any portion of the leased Tract, it shall not relieve the Lessee of the obligation to pay any bonus due thereon to the Louisiana State Mineral and Energy Board, nor shall the Louisiana State Mineral and Energy Board be obligated to refund any consideration paid by the Lessor prior to such modification, cancellation, or abrogation, including, but not limited to, bonuses, rentals and royalties.

NOTE: The mineral lease is located in the Pass-A-Loutre WMA under the jurisdiction of the Louisiana Department of Wildlife and Fisheries which has promulgated rules and regulations for the protection of game and wildlife on the aforesaid Tract and, therefore, shall be subject to said rules and regulations, a copy of which shall be attached to the mineral

lease. In addition to the specific rules and regulations applicable, the following shall apply regarding operations under this mineral lease:

NOTE: No activities will be allowed without written authorization from the Louisiana Department of Wildlife and Fisheries.

NOTE: Proposed projects will be evaluated on a case by case basis. Modifications to proposed project features including but not limited to access routes, spoil placement, well sites, flowlines and appurtenant structures may be required by the Department of Wildlife and Fisheries.

NOTE: Compliance with the said WMA regulations will be required unless otherwise specified by the Department of Wildlife and Fisheries.

NOTE: Compensatory mitigation will be required to offset unavoidable wetland impacts.

NOTE: Removal of all structures, facilities and equipment will be required within 120 days of abandonment unless otherwise agreed to in writing by the Louisiana Department of Wildlife and Fisheries.

NOTE: No activities will be allowed during the hunting season unless approved by the Department.

NOTE: Prior to submitting applications for wetland permits to Federal and State permitting agencies the leaseholder shall coordinate project details with the Department of Wildlife and Fisheries. Contact person for the Department will be Mike Windham at (504) 284-5268.

NOTE: The Department of Wildlife & Fisheries will require a minimum bonus of \$350 per acre and a minimum royalty of 25%.

NOTE: The State of Louisiana does hereby reserve, and this lease shall be subject to, the imprescriptible right of surface use in the nature of a servitude in favor of the Department of Natural Resources, including its Offices and Commissions, for the sole purpose of implementing, constructing, servicing and maintaining approved coastal zone management and/or restoration projects. Utilization of any and all rights derived under this lease by the mineral lessee, its agents, successors or assigns, shall not interfere with nor hinder the reasonable surface use by the Department of Natural Resources, its Offices or Commissions, as herein above reserved.

Applicant: JIL EXPLORATION, INC.

Bidder	Cash Payment	Price/Acre	Rental	Oil	Gas	Other

Legend

- 13110008
- Wildlife
- Active_Leases

GULF OF MEXICO

MISSISSIPPI RIVER

PLAQUEMINES PARISH

PASS A LOUTRE WMA

P.O.B.

SL 19677

0 3,000 Feet

TRACT 43624 - Plaquemines Parish, Louisiana

All State owned lands and water bottoms located within the boundaries of the Pass-A-Loutre Wildlife Management Area as defined by the Department of Wildlife and Fisheries incorporating a title opinion from the Office of the Governor dated August 3, 1998, not presently under mineral lease by the State of Louisiana on November 13, 2013, all as set forth following: Beginning at a point inside the Pass-A-Loutre Wildlife Management Area having Coordinates of X = 2,717,940.00 and Y = 186,970.00; thence South 12,721.25 feet to a point having Coordinates of X = 2,717,940.00 and Y = 174,248.75; thence West 1,105.73 feet to a on the Eastern boundary of State Lease No. 2091, as amended, having Coordinates of X = 2,716,834.27 and Y = 174,248.75; thence along the boundary of said State Lease No. 2091, as amended, the following courses: North 12 degrees 03 minutes 43 seconds East 410.29 feet to a point having Coordinates of X = 2,716,920.01 and Y = 174,649.98; North 04 degrees 05 minutes 08 seconds West 140.36 feet to a point having Coordinates of X = 2,716,910.01 and Y = 174,789.98; North 12 degrees 59 minutes 41 seconds West 133.42 feet to a point having Coordinates of X = 2,716,880.01 and Y = 174,919.98; North 31 degrees 13 minutes 06 seconds West 192.94 feet to a point having Coordinates of X = 2,716,780.01 and Y = 175,084.98; North 44 degrees 03 minutes 32 seconds West 215.70 feet to a point having Coordinates of X = 2,716,630.01 and Y = 175,239.99; North 53 degrees 44 minutes 46 seconds West 186.01 feet to a point having Coordinates of X = 2,716,480.01 and Y = 175,349.99; North 68 degrees 57 minutes 59 seconds West 139.28 feet to a point having Coordinates of X = 2,716,350.01 and Y = 175,399.98; North 74 degrees 28 minutes 23 seconds West 186.82 feet to a point having Coordinates of X = 2,716,170.01 and Y = 175,449.99; North 80 degrees 32 minutes 16 seconds West 212.90 feet to a point having Coordinates of X = 2,715,960.01 and Y = 175,484.99; North 86 degrees 49 minutes 13 seconds West 270.43 feet to a point having Coordinates of X = 2,715,690.00 and Y = 175,499.99; South 86 degrees 18 minutes 31 seconds West 310.63 feet to a point having Coordinates of X = 2,715,380.01 and Y = 175,479.99; South 79 degrees 32 minutes 18 seconds West 385.51 feet to a point having Coordinates of X = 2,715,000.91 and Y = 175,409.99; South 73 degrees 47 minutes 51 seconds West 250.86 feet to a point having Coordinates of X = 2,714,760.01 and Y = 175,339.99; South 65 degrees 22 minutes 35 seconds West 264.01 feet to a point having Coordinates of X = 2,714,520.01 and Y = 175,229.99; South 61 degrees 59 minutes 27 seconds West 532.35 feet to a point having Coordinates of X = 2,714,050.01 and Y = 174,979.99; South 81 degrees 52 minutes 12 seconds West 70.71 feet to a point having Coordinates of X = 2,713,980.01 and Y = 174,969.99; North 71 degrees 33 minutes 54 seconds West 94.87 feet to a point having Coordinates of X = 2,713,890.01 and Y = 174,999.99; North 63 degrees 26 minutes 06 seconds West 167.71 feet to a point having Coordinates of X = 2,713,740.01 and Y = 175,074.99; North 54 degrees 50 minutes 05 seconds West 269.13 feet to a point having Coordinates of X = 2,713,520.00 and Y = 175,229.99; North 47 degrees 29 minutes 22 seconds West 162.79 feet to a point having Coordinates of X = 2,713,400.00 and Y = 175,339.99; North 32 degrees 00 minutes 19 seconds West 94.34 feet to a point having Coordinates of X = 2,713,350.00 and Y =

175,419.99; North 12 degrees 05 minutes 41 seconds West 143.18 feet to a point having Coordinates of X = 2,713,320.00 and Y = 175,559.99; North 06 degrees 20 minutes 23 seconds West 181.12 feet to a point having Coordinates of X = 2,713,300.00 and Y = 175,740.00; North 02 degrees 12 minutes 18 seconds East 133.85 feet to a point having Coordinates of X = 2,713,305.15 and Y = 175,873.75; and South 88 degrees 50 minutes 20 seconds West 7.40 feet to the Southeast corner of State Lease No. 5003, as amended, having Coordinates of X = 2,713,297.75 and Y = 175,873.60; thence along the boundary of said State Lease No. 5003, as amended, the following courses: North 01 degrees 22 minutes 36 seconds West 128.62 feet to a point having Coordinates of X = 2,713,294.66 and Y = 176,002.18; and North 81 degrees 53 minutes 52 seconds West 381.94 feet to a point on the Northern boundary of said State Lease No. 2091, as amended, having Coordinates of X = 2,712,916.53 and Y = 176,056.01; thence North 81 degrees 53 minutes 54 seconds West 1,077.28 feet along the Northern boundary of said State Lease No. 2091, as amended, to the Northeast corner of said State Lease No. 5003, as amended, having Coordinates of X = 2,711,850.00 and Y = 176,207.83; thence along the boundary of said State Lease No. 5003, as amended, the following courses: North 81 degrees 53 minutes 55 seconds West 1,363.61 feet to a point having Coordinates of X = 2,710,500.00 and Y = 176,400.00; South 190.00 feet to a point having Coordinates of X = 2,710,500.00 and Y = 176,210.00; South 06 degrees 20 minutes 25 seconds East 181.11 feet to a point having Coordinates of X = 2,710,520.00 and Y = 176,030.00; South 14 degrees 02 minutes 11 seconds East 185.54 feet to a point having Coordinates of X = 2,710,565.00 and Y = 175,850.00; South 22 degrees 06 minutes 34 seconds East 172.70 feet to a point having Coordinates of X = 2,710,630.00 and Y = 175,690.00; South 29 degrees 39 minutes 00 seconds East 747.93 feet to a point having Coordinates of X = 2,711,000.00 and Y = 175,040.00; South 21 degrees 48 minutes 02 seconds East 215.42 feet to a point having Coordinates of X = 2,711,080.00 and Y = 174,839.99; South 17 degrees 31 minutes 32 seconds East 199.25 feet to a point having Coordinates of X = 2,711,140.00 and Y = 174,649.99; South 08 degrees 07 minutes 48 seconds East 141.42 feet to a point having Coordinates of X = 2,711,160.00 and Y = 174,509.99; South 04 degrees 05 minutes 08 seconds West 140.36 feet to a point having Coordinates of X = 2,711,150.00 and Y = 174,369.99; and South 19 degrees 26 minutes 24 seconds West 128.57 feet to a point having Coordinates of X = 2,711,107.21 and Y = 174,248.75; thence West 1,057.21 feet to a point having Coordinates of X = 2,710,050.00 and Y = 174,248.75; thence North 751.25 feet to the Southeast corner of State Lease No. 19677 having Coordinates of X = 2,710,050.00 and Y = 175,000.00; thence North 2,858.00 feet along the East line of said State Lease No. 19677 to its Northeast corner having Coordinates of X = 2,710,050.00 and Y = 177,858.00; thence North 9,112.00 feet to a point having Coordinates of X = 2,710,050.00 and Y = 186,970.00; thence East 7,890.00 feet to the point of beginning, **LESS AND EXCEPT** any privately owned land that may be located within the above described Tract, if any, said tract containing **2,108.63 acres**, all as more particularly outlined on a plat on file in the Office of Mineral Resources, Department of Natural Resources. All bearings, distances and

coordinates are based on Louisiana Coordinate System of 1927, (South Zone).

NOTE: The above description of the Tract nominated for lease has been provided and corrected, where required, exclusively by the nomination party. Any mineral lease selected from this Tract and awarded by the Louisiana State Mineral and Energy Board shall be without warranty of any kind, either express, implied, or statutory, including, but not limited to, the implied warranties of merchantability and fitness for a particular purpose. Should the mineral lease awarded by the Louisiana State Mineral and Energy Board be subsequently modified, cancelled or abrogated due to the existence of conflicting leases, operating agreements, private claims or other future obligations or conditions which may affect all or any portion of the leased Tract, it shall not relieve the Lessee of the obligation to pay any bonus due thereon to the Louisiana State Mineral and Energy Board, nor shall the Louisiana State Mineral and Energy Board be obligated to refund any consideration paid by the Lessor prior to such modification, cancellation, or abrogation, including, but not limited to, bonuses, rentals and royalties.

NOTE: The mineral lease is located in the Pass-A-Loutre WMA under the jurisdiction of the Louisiana Department of Wildlife and Fisheries which has promulgated rules and regulations for the protection of game and wildlife on the aforesaid Tract and, therefore, shall be subject to said rules and regulations, a copy of which shall be attached to the mineral lease. In addition to the specific rules and regulations applicable, the following shall apply regarding operations under this mineral lease:

NOTE: No activities will be allowed without written authorization from the Louisiana Department of Wildlife and Fisheries.

NOTE: Proposed projects will be evaluated on a case by case basis. Modifications to proposed project features including but not limited to access routes, spoil placement, well sites, flowlines and appurtenant structures may be required by the Department of Wildlife and Fisheries.

NOTE: Compliance with the said WMA regulations will be required unless otherwise specified by the Department of Wildlife and Fisheries.

NOTE: Compensatory mitigation will be required to offset unavoidable wetland impacts.

NOTE: Removal of all structures, facilities and equipment will be required within 120 days of abandonment unless otherwise agreed to in writing by the Louisiana Department of Wildlife and Fisheries.

NOTE: No activities will be allowed during the hunting season unless approved by the Department.

NOTE: Prior to submitting applications for wetland permits to Federal and State permitting agencies the leaseholder shall coordinate project details with the Department of Wildlife and Fisheries. Contact person for the Department will be Mike Windham at (504) 284-5268.

NOTE: The Department of Wildlife & Fisheries will require a minimum bonus of \$350 per acre and a minimum royalty of 25%.

NOTE: The State of Louisiana does hereby reserve, and this lease shall be subject to, the imprescriptible right of surface use in the nature of a servitude in favor of the Department of Natural Resources, including its Offices and Commissions, for the sole purpose of implementing, constructing, servicing and maintaining approved coastal zone management and/or restoration projects. Utilization of any and all rights derived under this lease by the mineral lessee, its agents, successors or assigns, shall not interfere with nor hinder the reasonable surface use by the Department of Natural Resources, its Offices or Commissions, as herein above reserved.

Applicant: JIL EXPLORATION, INC.

Bidder	Cash Payment	Price/Acre	Rental	Oil	Gas	Other

Legend

- 13110009
- Wildlife
- Active_Leases

PLAQUEMINES PARISH

PASS A LOUITRE WMA

P.O.B.

SL 5003

SL 2091

SL 5003

SL 19677

GULF OF MEXICO



0 3,000 Feet

TRACT 43625 - Plaquemines Parish, Louisiana

All State owned lands and water bottoms located within the boundaries of the Pass-A-Loutre Wildlife Management Area as defined by the Department of Wildlife and Fisheries incorporating a title opinion from the Office of the Governor dated August 3, 1998, not presently under mineral lease by the State of Louisiana on November 13, 2013, all as set forth following: Beginning at a point within the Pass-A-Loutre Wildlife Management Area having Coordinates of X = 2,735,714.79 and Y = 176,977.54; thence South 11,874.38 feet to a point having Coordinates of X = 2,735,714.79 and Y = 165,103.16; thence West 6,374.29 feet to a point on the Eastern boundary of State Lease No. 1927, as amended, having Coordinates of X = 2,729,340.50 and Y = 165,103.16; thence along the boundary of said State Lease No. 1927, as amended, the following courses: North 46 degrees 20 minutes 10 seconds East 1,660.58 feet to a point having Coordinates of X = 2,730,541.76 and Y = 166,249.67; North 27 degrees 20 minutes 57 seconds East 1,088.71 feet to a point having Coordinates of X = 2,731,041.93 and Y = 167,216.69; North 30 degrees 26 minutes 13 seconds West 435.26 feet to a point having Coordinates of X = 2,730,821.43 and Y = 167,591.97; North 87 degrees 36 minutes 58 seconds West 323.12 feet to a point having Coordinates of X = 2,730,498.59 and Y = 167,605.41; South 88 degrees 27 minutes 12 seconds West 335.32 feet to a point having Coordinates of X = 2,730,163.39 and Y = 167,596.36; South 82 degrees 24 minutes 32 seconds West 411.27 feet to a point having Coordinates of X = 2,729,755.72 and Y = 167,542.03; South 86 degrees 25 minutes 31 seconds West 290.47 feet to a point having Coordinates of X = 2,729,465.82 and Y = 167,523.92; North 86 degrees 18 minutes 37 seconds West 281.42 feet to a point having Coordinates of X = 2,729,184.98 and Y = 167,542.03; North 61 degrees 42 minutes 48 seconds West 267.49 feet to a point having Coordinates of X = 2,728,949.43 and Y = 167,668.79; North 55 degrees 49 minutes 40 seconds West 580.35 feet to a point having Coordinates of X = 2,728,469.28 and Y = 167,994.76; North 58 degrees 15 minutes 17 seconds West 447.43 feet to a point having Coordinates of X = 2,728,088.79 and Y = 168,230.17; North 61 degrees 29 minutes 22 seconds West 474.25 feet to a point having Coordinates of X = 2,727,672.05 and Y = 168,456.54; North 64 degrees 41 minutes 58 seconds West 741.52 feet to a point having Coordinates of X = 2,727,001.66 and Y = 168,773.44; North 54 degrees 47 minutes 49 seconds West 376.96 feet to a point having Coordinates of X = 2,726,693.64 and Y = 168,990.75; North 20 degrees 47 minutes 02 seconds West 280.86 feet to a point having Coordinates of X = 2,726,593.98 and Y = 169,253.33; North 05 degrees 34 minutes 26 seconds West 373.00 feet to a point having Coordinates of X = 2,726,557.75 and Y = 169,624.57; North 02 degrees 41 minutes 08 seconds East 580.12 feet to a point having Coordinates of X = 2,726,584.93 and Y = 170,204.05; North 07 degrees 54 minutes 36 seconds East 329.10 feet to a point having Coordinates of X = 2,726,630.22 and Y = 170,530.02; North 14 degrees 51 minutes 58 seconds East 459.03 feet to a point having Coordinates of X = 2,726,747.99 and Y = 170,973.69; North 07 degrees 18 minutes 07 seconds East 363.74 feet to a point having Coordinates of X = 2,726,794.22 and Y = 171,334.48; North 77 degrees 00 minutes 01 seconds East 567.34 feet to a point having Coordinates of X =

2,727,347.02 and Y = 171,462.10; North 73 degrees 03 minutes 13 seconds East 566.22 feet to a point having Coordinates of X = 2,727,888.65 and Y = 171,627.14; North 71 degrees 10 minutes 22 seconds East 225.46 feet to a point having Coordinates of X = 2,728,102.05 and Y = 171,699.90; North 68 degrees 50 minutes 33 seconds East 289.53 feet to a point having Coordinates of X = 2,728,372.06 and Y = 171,804.40; North 60 degrees 09 minutes 34 seconds East 252.04 feet to a point having Coordinates of X = 2,728,590.68 and Y = 171,929.81; North 23 degrees 22 minutes 33 seconds West 669.75 feet to a point having Coordinates of X = 2,728,324.95 and Y = 172,544.59; North 69 degrees 18 minutes 07 seconds West 2,539.05 feet to a point having Coordinates of X = 2,725,949.78 and Y = 173,442.00; and North 68 degrees 13 minutes 55 seconds West 2,253.05 feet to a point having Coordinates of X = 2,723,857.39 and Y = 174,277.54; thence North 2,700.00 feet to a point having Coordinates of X = 2,723,857.39 and Y = 176,977.54; thence East 11,857.40 feet to the point of beginning, **LESS AND EXCEPT** that portion of State Lease No. 1927, as amended, that falls within the above description being more fully described as: Commencing at a point being the point of beginning of the above described nominated tract having coordinates of X = 2,735,714.79 and Y = 176,977.54; thence South 23 degrees 39 minutes 50 seconds West 5,180.99 feet to a point being the point of beginning of said State Lease No. 1927, as amended, having Coordinates of X = 2,733,635.29 and Y = 172,232.19; thence South 27 degrees 27 minutes 22 seconds West 1,600.14 feet to a point having Coordinates of X = 2,732,900.00 and Y = 170,811.00; thence South 26 degrees 58 minutes 24 seconds West 126.79 feet to a point having Coordinates of X = 2,732,842.49 and Y = 170,698.00; thence West 365.19 feet to a point having Coordinates of X = 2,732,477.30 and Y = 170,698.00; thence North 804.76 feet to a point having Coordinates of X = 2,732,477.30 and Y = 171,502.76; thence North 57 degrees 47 minutes 34 seconds East 1,368.58 feet to the point of beginning, **LESS AND EXCEPT** any privately owned land that may be located within the above described Tract, if any, the nominated tract containing approximately **2,354.06 acres**, all as more particularly outlined on a plat on file in the Office of Mineral Resources, Department of Natural Resources. All bearings, distances and coordinates are based on Louisiana Coordinate System of 1927, (South Zone).

NOTE: The above description of the Tract nominated for lease has been provided and corrected, where required, exclusively by the nomination party. Any mineral lease selected from this Tract and awarded by the Louisiana State Mineral and Energy Board shall be without warranty of any kind, either express, implied, or statutory, including, but not limited to, the implied warranties of merchantability and fitness for a particular purpose. Should the mineral lease awarded by the Louisiana State Mineral and Energy Board be subsequently modified, cancelled or abrogated due to the existence of conflicting leases, operating agreements, private claims or other future obligations or conditions which may affect all or any portion of the leased Tract, it shall not relieve the Lessee of the obligation to pay any bonus due thereon to the Louisiana State Mineral and

Energy Board, nor shall the Louisiana State Mineral and Energy Board be obligated to refund any consideration paid by the Lessor prior to such modification, cancellation, or abrogation, including, but not limited to, bonuses, rentals and royalties.

NOTE: The mineral lease is located in the Pass-A-Loutre WMA under the jurisdiction of the Louisiana Department of Wildlife and Fisheries which has promulgated rules and regulations for the protection of game and wildlife on the aforesaid Tract and, therefore, shall be subject to said rules and regulations, a copy of which shall be attached to the mineral lease. In addition to the specific rules and regulations applicable, the following shall apply regarding operations under this mineral lease:

NOTE: No activities will be allowed without written authorization from the Louisiana Department of Wildlife and Fisheries.

NOTE: Proposed projects will be evaluated on a case by case basis. Modifications to proposed project features including but not limited to access routes, spoil placement, well sites, flowlines and appurtenant structures may be required by the Department of Wildlife and Fisheries.

NOTE: Compliance with the said WMA regulations will be required unless otherwise specified by the Department of Wildlife and Fisheries.

NOTE: Compensatory mitigation will be required to offset unavoidable wetland impacts.

NOTE: Removal of all structures, facilities and equipment will be required within 120 days of abandonment unless otherwise agreed to in writing by the Louisiana Department of Wildlife and Fisheries.

NOTE: No activities will be allowed during the hunting season unless approved by the Department.

NOTE: Prior to submitting applications for wetland permits to Federal and State permitting agencies the leaseholder shall coordinate project details with the Department of Wildlife and Fisheries. Contact person for the Department will be Mike Windham at (504) 284-5268.

NOTE: The Department of Wildlife & Fisheries will require a minimum bonus of \$350 per acre and a minimum royalty of 25%.

NOTE: The State of Louisiana does hereby reserve, and this lease shall be subject to, the imprescriptible right of surface use in the nature of a servitude in favor of the Department of Natural Resources, including its Offices and Commissions, for the sole purpose of implementing, constructing, servicing and maintaining approved coastal zone management and/or restoration projects. Utilization of any and all rights derived under this lease by the mineral lessee, its agents, successors or assigns,

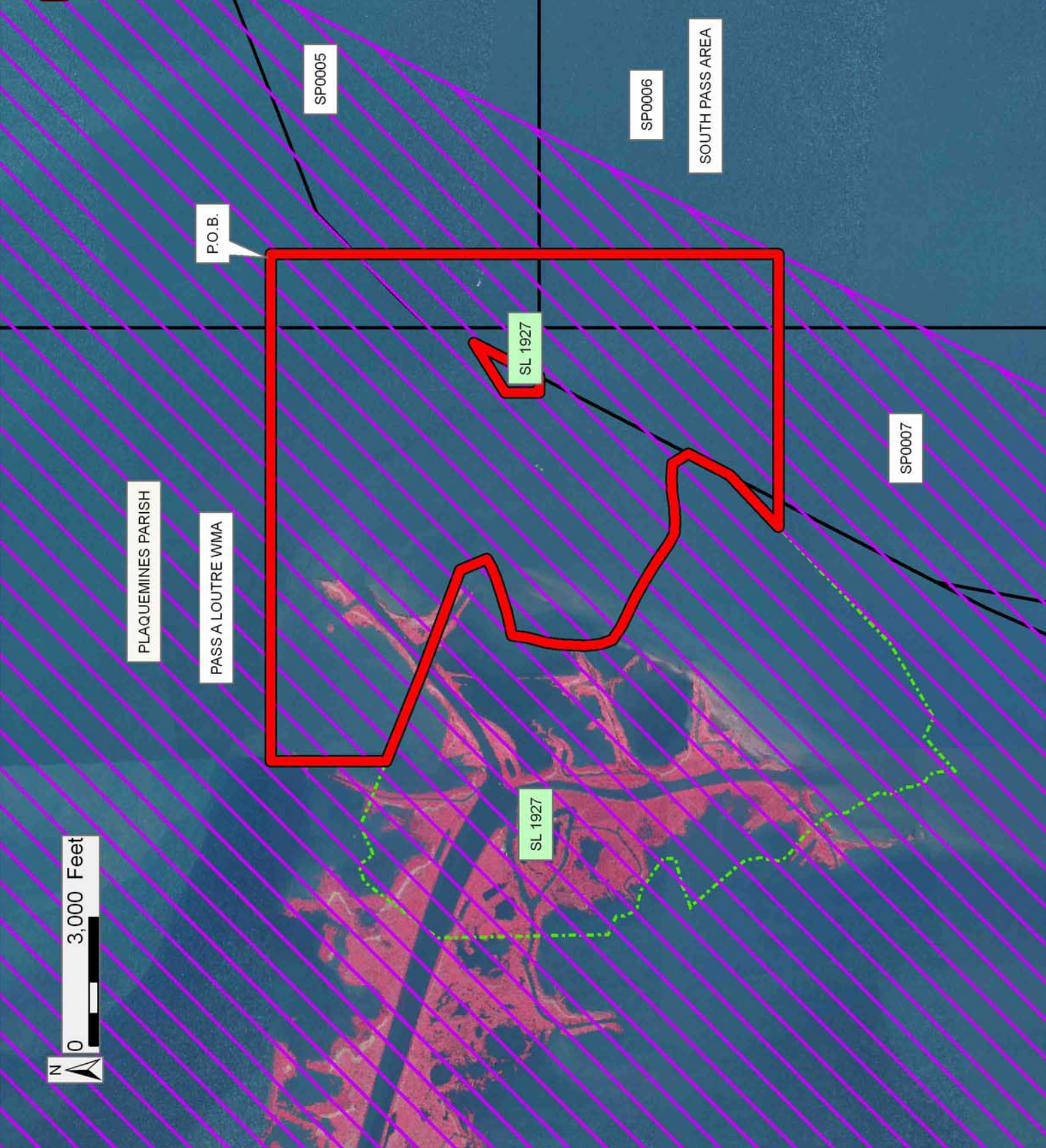
shall not interfere with nor hinder the reasonable surface use by the Department of Natural Resources, its Offices or Commissions, as herein above reserved.

Applicant: JIL EXPLORATION, INC.

Bidder	Cash Payment	Price/Acre	Rental	Oil	Gas	Other

Legend

- 13110037
- Wildlife
- Blocks
- Active_Leases
- DOQQ2008



PLAQUEMINES PARISH

PASS A LOUTRE WMA

P.O.B.

SP0005

SP0006

SOUTH PASS AREA

SP0007

SL 1927

SL 1927

TRACT 43626 - Plaquemines Parish, Louisiana

All State owned lands and water bottoms located within the boundaries of the Pass-A-Loutre Wildlife Management Area as defined by the Department of Wildlife and Fisheries incorporating a title opinion from the Office of the Governor dated August 3, 1998, not presently under mineral lease by the State of Louisiana on November 13, 2013, all as set forth following: Beginning at a point within the Pass-A-Loutre Wildlife Management Area having Coordinates of X = 2,735,714.79 and Y = 176,977.54; thence East 6,119.60 feet to a point on the Eastern boundary of said Pass- A-Loutre Wildlife Management Area having Coordinates of X = 2,741,834.40 and Y = 176,977.54; thence South 27 degrees 15 minutes 54 seconds West 13,358.54 feet along the Eastern boundary of said Pass-A-Loutre Wildlife Management Area to a point having Coordinates of X = 2,735,714.79 and Y = 165,103.16; thence North 11,874.38 feet to the point of beginning, **LESS AND EXCEPT** any privately owned land that may be located within the above described Tract, if any, said tract containing **834.10 acres**, all as more particularly outlined on a plat on file in the Office of Mineral Resources, Department of Natural Resources. All bearings, distances and coordinates are based on Louisiana Coordinate System of 1927, (South Zone).

NOTE: The above description of the Tract nominated for lease has been provided and corrected, where required, exclusively by the nomination party. Any mineral lease selected from this Tract and awarded by the Louisiana State Mineral and Energy Board shall be without warranty of any kind, either express, implied, or statutory, including, but not limited to, the implied warranties of merchantability and fitness for a particular purpose. Should the mineral lease awarded by the Louisiana State Mineral and Energy Board be subsequently modified, cancelled or abrogated due to the existence of conflicting leases, operating agreements, private claims or other future obligations or conditions which may affect all or any portion of the leased Tract, it shall not relieve the Lessee of the obligation to pay any bonus due thereon to the Louisiana State Mineral and Energy Board, nor shall the Louisiana State Mineral and Energy Board be obligated to refund any consideration paid by the Lessor prior to such modification, cancellation, or abrogation, including, but not limited to, bonuses, rentals and royalties.

NOTE: The mineral lease is located in the Pass-A-Loutre WMA under the jurisdiction of the Louisiana Department of Wildlife and Fisheries which has promulgated rules and regulations for the protection of game and wildlife on the aforesaid Tract and, therefore, shall be subject to said rules and regulations, a copy of which shall be attached to the mineral lease. In addition to the specific rules and regulations applicable, the following shall apply regarding operations under this mineral lease:

NOTE: No activities will be allowed without written authorization from the Louisiana Department of Wildlife and Fisheries.

NOTE: Proposed projects will be evaluated on a case by case basis. Modifications to proposed project features including but not limited to access routes, spoil placement, well sites, flowlines and appurtenant structures may be required by the Department of Wildlife and Fisheries.

NOTE: Compliance with the said WMA regulations will be required unless otherwise specified by the Department of Wildlife and Fisheries.

NOTE: Compensatory mitigation will be required to offset unavoidable wetland impacts.

NOTE: Removal of all structures, facilities and equipment will be required within 120 days of abandonment unless otherwise agreed to in writing by the Louisiana Department of Wildlife and Fisheries.

NOTE: No activities will be allowed during the hunting season unless approved by the Department.

NOTE: Prior to submitting applications for wetland permits to Federal and State permitting agencies the leaseholder shall coordinate project details with the Department of Wildlife and Fisheries. Contact person for the Department will be Mike Windham at (504) 284-5268.

NOTE: The Department of Wildlife & Fisheries will require a minimum bonus of \$350 per acre and a minimum royalty of 25%.

NOTE: The State of Louisiana does hereby reserve, and this lease shall be subject to, the imprescriptible right of surface use in the nature of a servitude in favor of the Department of Natural Resources, including its Offices and Commissions, for the sole purpose of implementing, constructing, servicing and maintaining approved coastal zone management and/or restoration projects. Utilization of any and all rights derived under this lease by the mineral lessee, its agents, successors or assigns, shall not interfere with nor hinder the reasonable surface use by the Department of Natural Resources, its Offices or Commissions, as herein above reserved.

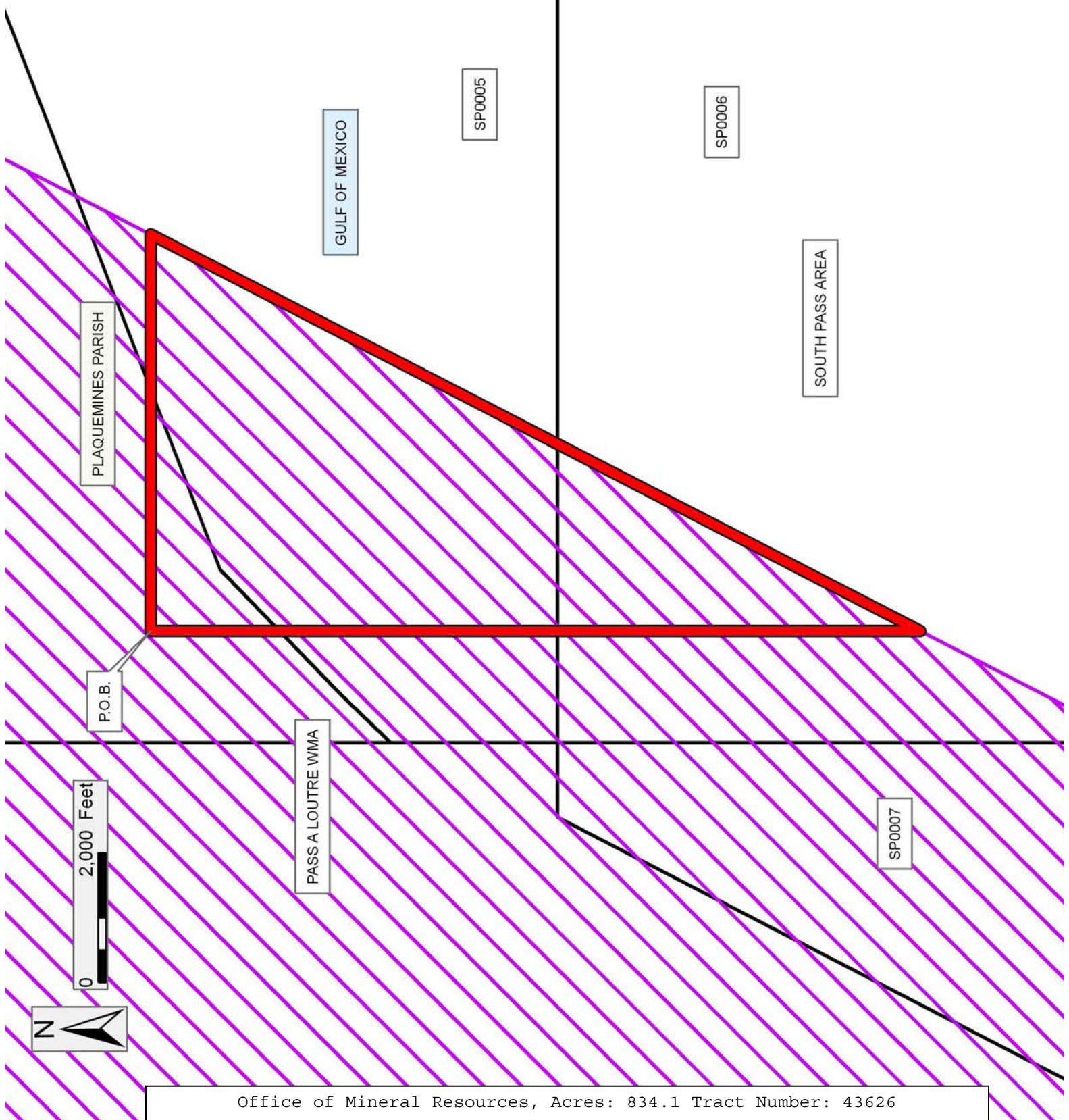
Bidder	Cash Payment	Price/Acre	Rental	Oil	Gas	Other

Applicant: JIL EXPLORATION, INC.

13110031

Wildlife

Blocks



TRACT 43627 - Plaquemines Parish, Louisiana

All State owned lands and water bottoms located within the boundaries of the Pass-A-Loutre Wildlife Management Area as defined by the Department of Wildlife and Fisheries incorporating a title opinion from the Office of the Governor dated August 3, 1998, not presently under mineral lease by the State of Louisiana on November 13, 2013, all as set forth following: Beginning at a point inside the Pass-A-Loutre Wildlife Management Area having Coordinates of X = 2,708,918.95 and Y = 161,745.25; thence West approximately 5,000 feet to a point on the Eastern boundary of State Lease No. 214, as amended, and State Lease No. 1393 having a Coordinate of Y = 161,745.25; thence along the boundary of said State Lease No. 214, as amended, and State Lease No. 1393 the following courses: North approximately 8,544 feet, West approximately 2,640 feet, North approximately 2,640 feet, West approximately 2,640 feet, North approximately 1,320 feet, to a point of intersection with a North-South line having a Coordinate of X = 2,698,638.95; thence East 10,280.00 feet to a point having Coordinates of X = 2,708,918.95 and Y = 174,248.75; thence South 12,503.50 feet to point of beginning, **LESS AND EXCEPT** any privately owned land that may be located within the above described Tract, if any, said tract containing **1,755 acres**, all as more particularly outlined on a plat on file in the Office of Mineral Resources, Department of Natural Resources. All bearings, distances and coordinates are based on Louisiana Coordinate System of 1927, (South Zone).

NOTE: The above description of the Tract nominated for lease has been provided and corrected, where required, exclusively by the nomination party. Any mineral lease selected from this Tract and awarded by the Louisiana State Mineral and Energy Board shall be without warranty of any kind, either express, implied, or statutory, including, but not limited to, the implied warranties of merchantability and fitness for a particular purpose. Should the mineral lease awarded by the Louisiana State Mineral and Energy Board be subsequently modified, cancelled or abrogated due to the existence of conflicting leases, operating agreements, private claims or other future obligations or conditions which may affect all or any portion of the leased Tract, it shall not relieve the Lessee of the obligation to pay any bonus due thereon to the Louisiana State Mineral and Energy Board, nor shall the Louisiana State Mineral and Energy Board be obligated to refund any consideration paid by the Lessor prior to such modification, cancellation, or abrogation, including, but not limited to, bonuses, rentals and royalties.

NOTE: The mineral lease is located in the Pass-A-Loutre WMA under the jurisdiction of the Louisiana Department of Wildlife and Fisheries which has promulgated rules and regulations for the protection of game and wildlife on the aforesaid Tract and, therefore, shall be subject to said rules and regulations, a copy of which shall be attached to the mineral lease. In addition to the specific rules and regulations applicable, the following shall apply regarding operations under this mineral lease:

NOTE: No activities will be allowed without written authorization from the Louisiana Department of Wildlife and Fisheries.

NOTE: Proposed projects will be evaluated on a case by case basis. Modifications to proposed project features including but not limited to access routes, spoil placement, well sites, flowlines and appurtenant structures may be required by the Department of Wildlife and Fisheries.

NOTE: Compliance with the said WMA regulations will be required unless otherwise specified by the Department of Wildlife and Fisheries.

NOTE: Compensatory mitigation will be required to offset unavoidable wetland impacts.

NOTE: Removal of all structures, facilities and equipment will be required within 120 days of abandonment unless otherwise agreed to in writing by the Louisiana Department of Wildlife and Fisheries.

NOTE: No activities will be allowed during the hunting season unless approved by the Department.

NOTE: Prior to submitting applications for wetland permits to Federal and State permitting agencies the leaseholder shall coordinate project details with the Department of Wildlife and Fisheries. Contact person for the Department will be Mike Windham at (504) 284-5268.

NOTE: The Department of Wildlife & Fisheries will require a minimum bonus of \$350 per acre and a minimum royalty of 25%.

NOTE: The State of Louisiana does hereby reserve, and this lease shall be subject to, the imprescriptible right of surface use in the nature of a servitude in favor of the Department of Natural Resources, including its Offices and Commissions, for the sole purpose of implementing, constructing, servicing and maintaining approved coastal zone management and/or restoration projects. Utilization of any and all rights derived under this lease by the mineral lessee, its agents, successors or assigns, shall not interfere with nor hinder the reasonable surface use by the Department of Natural Resources, its Offices or Commissions, as herein above reserved.

Applicant: JIL EXPLORATION, INC.

Bidder	Cash Payment	Price/Acre	Rental	Oil	Gas	Other

13110026
 Wildlife
 Active Lease

GULF OF MEXICO

P.O.B.

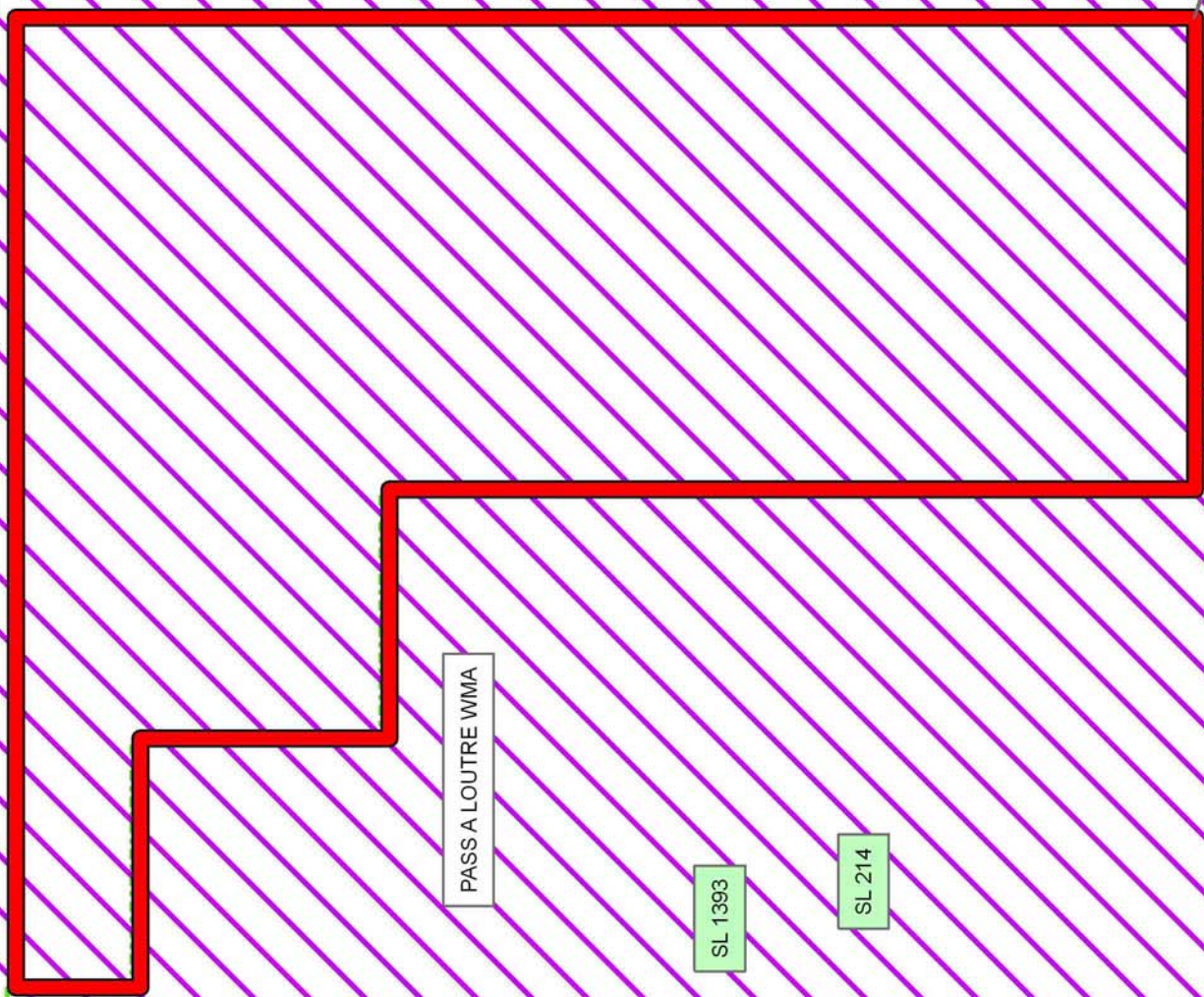
PLAQUEMINES PARISH

PASS A LOUTRE WMA

SL 1393

SL 214

2,000 Feet



TRACT 43628 - Plaquemines Parish, Louisiana

All State owned lands and water bottoms located within the boundaries of the Pass-A-Loutre Wildlife Management Area as defined by the Department of Wildlife and Fisheries incorporating a title opinion from the Office of the Governor dated August 3, 1998, not presently under mineral lease by the State of Louisiana on November 13, 2013, all as set forth following: Beginning at a point inside the Pass-A-Loutre Wildlife Management Area having Coordinates of X = 2,708,918.95 and Y = 165,540.00; thence North 8,708.75 feet to a point having Coordinates of X = 2,708,918.95 and Y = 174,248.75; thence East 2,188.26 feet to a point on the Western boundary of State Lease No. 5003, as amended, having Coordinates of X = 2,711,107.21 and Y = 174,248.75; thence along the boundary of said State Lease No. 5003, as amended, the following courses: South 19 degrees 26 minutes 24 seconds West 51.71 feet to a point having Coordinates of X = 2,711,090.00 and Y = 174,199.99; South 28 degrees 36 minutes 38 seconds West 250.60 feet to a point having Coordinates of X = 2,710,970.00 and Y = 173,979.99; South 34 degrees 49 minutes 28 seconds West 280.18 feet to a point having Coordinates of X = 2,710,810.00 and Y = 173,749.99; South 39 degrees 33 minutes 35 seconds West 298.33 feet to a point having Coordinates of X = 2,710,620.00 and Y = 173,519.99; and South 37 degrees 58 minutes 18 seconds West 471.32 feet to the Northwest corner of State Lease No. 4901, as amended, having Coordinates of X = 2,710,330.01 and Y = 173,148.44; thence along the boundary of said State Lease No. 4901, as amended, the following courses: South 37 degrees 58 minutes 26 seconds West 48.79 feet to a point having Coordinates of X = 2,710,299.99 and Y = 173,109.98; South 30 degrees 57 minutes 50 seconds West 174.93 feet to a point having Coordinates of X = 2,710,209.99 and Y = 172,959.98; South 19 degrees 39 minutes 14 seconds West 148.66 feet to a point having Coordinates of X = 2,710,159.99 and Y = 172,819.98; South 10 degrees 00 minutes 29 seconds West 172.63 feet to a point having Coordinates of X = 2,710,129.99 and Y = 172,649.98; South 185.00 feet to a point having Coordinates of X = 2,710,129.99 and Y = 172,464.98; South 09 degrees 51 minutes 57 seconds East 116.73 feet to a point having Coordinates of X = 2,710,149.99 and Y = 172,349.98; South 20 degrees 13 minutes 30 seconds East 202.48 feet to a point having Coordinates of X = 2,710,219.99 and Y = 172,159.98; South 33 degrees 41 minutes 24 seconds East 180.28 feet to a point having Coordinates of X = 2,710,319.99 and Y = 172,009.98; South 45 degrees 00 minutes 00 seconds East 197.99 feet to a point having Coordinates of X = 2,710,459.99 and Y = 171,869.98; South 52 degrees 07 minutes 30 seconds East 342.05 feet to a point having Coordinates of X = 2,710,729.99 and Y = 171,659.98; South 61 degrees 23 minutes 22 seconds East 250.60 feet to a point having Coordinates of X = 2,710,949.99 and Y = 171,539.98; South 67 degrees 45 minutes 04 seconds East 237.70 feet to a point having Coordinates of X = 2,711,169.99 and Y = 171,449.98; South 74 degrees 03 minutes 17 seconds East 291.20 feet to a point having Coordinates of X = 2,711,449.99 and Y = 171,369.98; South 81 degrees 28 minutes 09 seconds East 202.24 feet to a point having Coordinates of X = 2,711,649.99 and Y = 171,339.98; and East 200.01 feet to the Southwest corner of State Lease No. 2090, as amended, having Coordinates of X =

2,711,850.00 and Y = 171,339.98; thence along the boundary of said State Lease No. 2090, as amended, the following courses: North 78 degrees 40 minutes 58 seconds East 152.97 feet to a point having Coordinates of X = 2,712,000.00 and Y = 171,370.00; North 71 degrees 34 minutes 07 seconds East 252.97 feet to a point having Coordinates of X = 2,712,239.99 and Y = 171,449.98; North 63 degrees 32 minutes 16 seconds East 251.48 feet to a point having Coordinates of X = 2,712,465.12 and Y = 171,562.04; North 56 degrees 18 minutes 38 seconds East 216.32 feet to a point having Coordinates of X = 2,712,645.11 and Y = 171,682.03; North 50 degrees 49 minutes 35 seconds East 348.28 feet to a point having Coordinates of X = 2,712,915.11 and Y = 171,902.03; North 63 degrees 30 minutes 42 seconds East 83.38 feet to a point having Coordinates of X = 2,712,989.74 and Y = 171,939.22; North 71 degrees 32 minutes 37 seconds East 126.54 feet to a point having Coordinates of X = 2,713,109.77 and Y = 171,979.28; North 84 degrees 01 minutes 47 seconds East 191.04 feet to a point having Coordinates of X = 2,713,299.77 and Y = 171,999.15; East 230.00 feet to a point having Coordinates of X = 2,713,529.77 and Y = 171,999.15; South 81 degrees 36 minutes 00 seconds East 272.93 feet to a point having Coordinates of X = 2,713,799.77 and Y = 171,959.28; South 78 degrees 09 minutes 18 second East 531.51 feet to a point having Coordinates of X = 2,714,319.96 and Y = 171,850.18; South 79 degrees 52 minutes 31 seconds East 284.43 feet to a point having Coordinates of X = 2,714,599.96 and Y = 171,800.18; South 85 degrees 14 minutes 11 seconds East 240.83 feet to a point having Coordinates of X = 2,714,839.96 and Y = 171,780.18; North 87 degrees 42 minutes 34 seconds East 250.20 feet to a point having Coordinates of X = 2,715,089.96 and Y = 171,790.18; North 84 degrees 33 minutes 35 seconds East 210.95 feet to a point having Coordinates of X = 2,715,299.96 and Y = 171,810.18; North 74 degrees 08 minutes 12 seconds East 145.61 feet to a point having Coordinates of X = 2,715,440.02 and Y = 171,849.98; North 66 degrees 22 minutes 10 seconds East 174.63 feet to a point having Coordinates of X = 2,715,600.01 and Y = 171,919.98; North 57 degrees 48 minutes 01 seconds East 319.06 feet to a point having Coordinates of X = 2,715,870.00 and Y = 172,090.00; North 51 degrees 20 minutes 42 seconds East 256.12 feet to a point having Coordinates of X = 2,716,070.01 and Y = 172,249.98; North 41 degrees 38 minutes 06 seconds East 240.82 feet to a point having Coordinates of X = 2,716,230.01 and Y = 172,429.97; North 32 degrees 00 minutes 19 seconds East 377.36 feet to a point having Coordinates of X = 2,716,430.01 and Y = 172,749.97; North 27 degrees 45 minutes 26 seconds East 214.72 feet to a point having Coordinates of X = 2,716,530.01 and Y = 172,939.98; North 15 degrees 22 minutes 35 seconds East 414.85 feet to a point having Coordinates of X = 2,716,640.01 and Y = 173,339.98; and North 12 degrees 05 minutes 21 seconds East 143.20 feet to the Southeast corner of State Lease No. 2091, as amended, having Coordinates of X = 2,716,670.00 and Y = 173,480.00; thence North 12 degrees 03 minutes 43 seconds East 786.11 feet along the Eastern boundary of said State Lease No. 2091, as amended, to a point having Coordinates of X = 2,716,834.27 and Y = 174,248.75; thence East 3,789.70 feet to a point on the Western boundary of State Lease No. 1927, as amended, having Coordinates of X = 2,720,623.97 and Y = 174,248.75;

thence along the boundary of said State Lease No. 1927, as amended, the following courses: South 37 degrees 15 minutes 45 seconds West 1,480.18 feet to a point having Coordinates of X = 2,719,727.77 and Y = 173,070.72 and South 01 degrees 07 minutes 56 seconds East 980.91 feet to the Northeast corner of said State Lease No. 2090, as amended, having Coordinates of X = 2,719,747.15 and Y = 172,090.01; thence along the boundary of said State Lease No. 2090, as amended, the following courses: West 786.15 feet to a point having Coordinates of X = 2,718,961.00 and Y = 172,090.01; South 38 degrees 21 minutes 44 seconds West 780.43 feet to a point having Coordinates of X = 2,718,476.64 and Y = 171,478.07; South 68 degrees 28 minutes 00 seconds West 512.39 feet to a point having Coordinates of X = 2,718,000.01 and Y = 171,290.00; South 00 degrees 00 minutes 12 seconds West 173.00 feet to a point having Coordinates of X = 2,718,000.00 and Y = 171,117.00; South 71 degrees 33 minutes 54 seconds West 53.76 feet to a point having Coordinates of X = 2,717,949.00 and Y = 171,100.00; South 54 degrees 51 minutes 33 seconds East 62.77 feet to a point having Coordinates of X = 2,718,000.33 and Y = 171,063.87; South 609.68 feet to a point having Coordinates of X = 2,718,000.33 and Y = 170,454.19; West 279.96 feet to a point having Coordinates of X = 2,717,720.37 and Y = 170,454.19; South 03 degrees 36 minutes 31 seconds West 1,593.53 feet to a point having Coordinates of X = 2,717,620.07 and Y = 168,863.82; North 88 degrees 52 minutes 04 seconds East 1,126.01 feet to a point having Coordinates of X = 2,718,745.86 and Y = 168,886.07; North 88 degrees 52 minutes 03 seconds East 1,064.41 feet to a point having Coordinates of X = 2,719,810.06 and Y = 168,907.11; and North 01 degrees 07 minutes 55 seconds West 178.20 feet to a point on the Western boundary of said State Lease No. 1927, as amended, having Coordinates of X = 2,719,806.54 and Y = 169,085.27; thence along the boundary of said State Lease No. 1927, as amended, the following courses: South 66 degrees 51 minutes 26 seconds East 471.39 feet to a point having Coordinates of X = 2,720,240.00 and Y = 168,900.00; South 03 degrees 10 minutes 47 seconds East 180.28 feet to a point having Coordinates of X = 2,720,250.00 and Y = 168,720.00; South 20 degrees 33 minutes 22 seconds East 170.88 feet to a point having Coordinates of X = 2,720,310.00 and Y = 168,560.00; South 42 degrees 49 minutes 13 seconds East 204.50 feet to a point having Coordinates of X = 2,720,449.00 and Y = 168,410.00; South 77 degrees 21 minutes 00 seconds East 410.97 feet to a point having Coordinates of X = 2,720,849.99 and Y = 168,320.00; South 54 degrees 54 minutes 15 seconds East 904.43 feet to a point having Coordinates of X = 2,721,589.99 and Y = 167,800.00; South 280.00 feet to a point having Coordinates of X = 2,721,589.99 and Y = 167,520.00; South 75 degrees 44 minutes 11 seconds West 608.77 feet to a point having Coordinates of X = 2,720,999.99 and Y = 167,370.01; and South 69 degrees 41 minutes 42 seconds West 586.20 feet to a point on the Eastern boundary of said State Lease No. 2090, as amended, having Coordinates of X = 2,720,450.22 and Y = 167,166.59; thence along the boundary of said State Lease No. 2090, as amended, the following courses: North 57 degrees 47 minutes 01 seconds West 724.81 feet to a point having Coordinates of X = 2,719,837.00 and Y = 167,553.00; South 01 degrees 08 minutes 31 seconds East 903.18 feet to a point having

Coordinates of X = 2,719,855.00 and Y = 166,650.00; West 205.00 feet to a point having Coordinates of X = 2,719,650.00 and Y = 166,650.00; South 100.00 feet to a point having Coordinates of X = 2,719,650.00 and Y = 166,650.00; South 116.91 feet to a point having Coordinates of X = 2,719,650.00 and Y = 166,433.09; South 893.09 feet to a point having Coordinates of X = 2,719,650.00 and Y = 165,540.00; West 948.80 feet to a point having Coordinates of X = 2,718,701.20 and Y = 165,540.00; North 60 degrees 47 minutes 44 seconds West 79.54 feet to a point having Coordinates of X = 2,718,631.77 and Y = 165,578.81; North 71 degrees 49 minutes 07 seconds West 144.28 feet to a point having Coordinates of X = 2,718,494.69 and Y = 165,523.83; North 80 degrees 34 minutes 00 seconds West 207.45 feet to a point having Coordinates of X = 2,718,290.05 and Y = 165,657.83; South 87 degrees 38 minutes 00 seconds West 206.33 feet to a point having X = 2,718,083.90 and Y = 165,649.31; South 79 degrees 08 minutes 21 seconds West 297.52 feet to a point having Coordinates of X = 2,717,791.71 and Y = 165,593.25; South 79 degrees 39 minutes 18 seconds West 296.53 feet to a point having Coordinates of X = 2,717,500.00 and Y = 165,540.00; West 98.57 feet to a point having Coordinates of X = 2,717,401.43 and Y = 165,540.00; and West 391.43 feet to a point having Coordinates of X = 2,717,010.00 and Y = 165,540.00; thence West 8,091.05 feet to the point of beginning, **LESS AND EXCEPT** any privately owned land that may be located within the above described Tract, if any, said tract containing **1,744.19 acres**, all as more particularly outlined on a plat on file in the Office of Mineral Resources, Department of Natural Resources. All bearings, distances and coordinates are based on Louisiana Coordinate System of 1927, (South Zone).

NOTE: The above description of the Tract nominated for lease has been provided and corrected, where required, exclusively by the nomination party. Any mineral lease selected from this Tract and awarded by the Louisiana State Mineral and Energy Board shall be without warranty of any kind, either express, implied, or statutory, including, but not limited to, the implied warranties of merchantability and fitness for a particular purpose. Should the mineral lease awarded by the Louisiana State Mineral and Energy Board be subsequently modified, cancelled or abrogated due to the existence of conflicting leases, operating agreements, private claims or other future obligations or conditions which may affect all or any portion of the leased Tract, it shall not relieve the Lessee of the obligation to pay any bonus due thereon to the Louisiana State Mineral and Energy Board, nor shall the Louisiana State Mineral and Energy Board be obligated to refund any consideration paid by the Lessor prior to such modification, cancellation, or abrogation, including, but not limited to, bonuses, rentals and royalties.

NOTE: The mineral lease is located in the Pass-A-Loutre WMA under the jurisdiction of the Louisiana Department of Wildlife and Fisheries which has promulgated rules and regulations for the protection of game and wildlife on the aforesaid Tract and, therefore, shall be subject to said rules and regulations, a copy of which shall be attached to the mineral

lease. In addition to the specific rules and regulations applicable, the following shall apply regarding operations under this mineral lease:

NOTE: No activities will be allowed without written authorization from the Louisiana Department of Wildlife and Fisheries.

NOTE: Proposed projects will be evaluated on a case by case basis. Modifications to proposed project features including but not limited to access routes, spoil placement, well sites, flowlines and appurtenant structures may be required by the Department of Wildlife and Fisheries.

NOTE: Compliance with the said WMA regulations will be required unless otherwise specified by the Department of Wildlife and Fisheries.

NOTE: Compensatory mitigation will be required to offset unavoidable wetland impacts.

NOTE: Removal of all structures, facilities and equipment will be required within 120 days of abandonment unless otherwise agreed to in writing by the Louisiana Department of Wildlife and Fisheries.

NOTE: No activities will be allowed during the hunting season unless approved by the Department.

NOTE: Prior to submitting applications for wetland permits to Federal and State permitting agencies the leaseholder shall coordinate project details with the Department of Wildlife and Fisheries. Contact person for the Department will be Mike Windham at (504) 284-5268.

NOTE: The Department of Wildlife & Fisheries will require a minimum bonus of \$350 per acre and a minimum royalty of 25%.

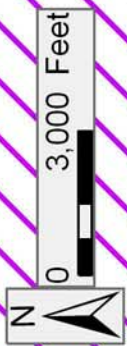
NOTE: The State of Louisiana does hereby reserve, and this lease shall be subject to, the imprescriptible right of surface use in the nature of a servitude in favor of the Department of Natural Resources, including its Offices and Commissions, for the sole purpose of implementing, constructing, servicing and maintaining approved coastal zone management and/or restoration projects. Utilization of any and all rights derived under this lease by the mineral lessee, its agents, successors or assigns, shall not interfere with nor hinder the reasonable surface use by the Department of Natural Resources, its Offices or Commissions, as herein above reserved.

Applicant: JIL EXPLORATION, INC.

Bidder	Cash Payment	Price/Acre	Rental	Oil	Gas	Other

Legend

- 13110013
- Wildlife
- Active_Leases



PLAQUEMINES PARISH

PASS A LOUITRE WMA

GULF OF MEXICO

SL 5003

SL 2091

SL 4901

SL 2090

SL 2090

SL 1927

SL 2090

P.O.B.

TRACT 43629 - Plaquemines Parish, Louisiana

All State owned lands and water bottoms located within the boundaries of the Pass-A-Loutre Wildlife Management Area as defined by the Department of Wildlife and Fisheries incorporating a title opinion from the Office of the Governor dated August 3, 1998, not presently under mineral lease by the State of Louisiana on November 13, 2013, all as set forth following: Beginning at a point within the Pass-A-Loutre Wildlife Management Area having Coordinates of X = 2,708,918.95 and Y = 165,540.00; thence East 8,091.05 feet to a point on the Western boundary of State Lease No. 2090, as amended, having Coordinates of X = 2,717,010.00 and Y = 165,540.00; thence along the boundary of said State Lease No. 1927, as amended, the following courses: South 37.54 feet to a point having Coordinates of X = 2,717,010.00 and Y = 165,502.46; East 388.69 feet to a point having Coordinates of X = 2,717,398.69 and Y = 165,502.46; South 04 degrees 10 minutes 17 seconds West 2,609.37 feet to a point having Coordinates of X = 2,717,208.89 and Y = 162,900.00; South 04 degrees 10 minutes 16 seconds West 842.23 feet to a point having Coordinates of X = 2,717,147.63 and Y = 162,060.00; North 81 degrees 31 minutes 33 seconds East 1,045.50 feet to a point having Coordinates of X = 2,718,181.72 and Y = 162,214.07; North 77 degrees 50 minutes 02 seconds East 296.85 feet to a point having Coordinates of X = 2,718,471.90 and Y = 162,276.63; North 68 degrees 26 minutes 37 seconds East 192.04 feet to a point having Coordinates of X = 2,718,650.51 and Y = 162,347.19; North 62 degrees 46 minutes 04 seconds East 193.55 feet to a point having Coordinates of X = 2,718,822.61 and Y = 162,435.76; North 53 degrees 02 minutes 30 seconds East 202.23 feet to a point having Coordinates of X = 2,718,984.21 and Y = 162,557.35; North 44 degrees 10 minutes 23 seconds East 197.44 feet to a point having Coordinates of X = 2,719,121.79 and Y = 162,698.96; and North 32 degrees 56 minutes 12 seconds East 202.09 feet to a point having Coordinates of X = 2,719,231.67 and Y = 162,868.57; thence South 00 degrees 01 minutes 09 seconds East 6,928.57 feet to a point having Coordinates of X = 2,719,234.00 and Y = 155,940.00; thence West 10,315.05 feet to a point having Coordinates of X = 2,708,918.95 and Y = 155,940.00; thence North 9,600.00 feet to the point of beginning, **LESS AND EXCEPT** any privately owned land that may be located within the above described Tract, if any, said tract containing **2,126.92 acres**, all as more particularly outlined on a plat on file in the Office of Mineral Resources, Department of Natural Resources. All bearings, distances and coordinates are based on Louisiana Coordinate System of 1927, (South Zone).

NOTE: The above description of the Tract nominated for lease has been provided and corrected, where required, exclusively by the nomination party. Any mineral lease selected from this Tract and awarded by the Louisiana State Mineral and Energy Board shall be without warranty of any kind, either express, implied, or statutory, including, but not limited to, the implied warranties of merchantability and fitness for a particular purpose. Should the mineral lease awarded by the Louisiana State Mineral and Energy Board be subsequently modified, cancelled or abrogated due to the existence of conflicting leases, operating agreements, private claims

or other future obligations or conditions which may affect all or any portion of the leased Tract, it shall not relieve the Lessee of the obligation to pay any bonus due thereon to the Louisiana State Mineral and Energy Board, nor shall the Louisiana State Mineral and Energy Board be obligated to refund any consideration paid by the Lessor prior to such modification, cancellation, or abrogation, including, but not limited to, bonuses, rentals and royalties.

NOTE: The mineral lease is located in the Pass-A-Loutre WMA under the jurisdiction of the Louisiana Department of Wildlife and Fisheries which has promulgated rules and regulations for the protection of game and wildlife on the aforesaid Tract and, therefore, shall be subject to said rules and regulations, a copy of which shall be attached to the mineral lease. In addition to the specific rules and regulations applicable, the following shall apply regarding operations under this mineral lease:

NOTE: No activities will be allowed without written authorization from the Louisiana Department of Wildlife and Fisheries.

NOTE: Proposed projects will be evaluated on a case by case basis. Modifications to proposed project features including but not limited to access routes, spoil placement, well sites, flowlines and appurtenant structures may be required by the Department of Wildlife and Fisheries.

NOTE: Compliance with the said WMA regulations will be required unless otherwise specified by the Department of Wildlife and Fisheries.

NOTE: Compensatory mitigation will be required to offset unavoidable wetland impacts.

NOTE: Removal of all structures, facilities and equipment will be required within 120 days of abandonment unless otherwise agreed to in writing by the Louisiana Department of Wildlife and Fisheries.

NOTE: No activities will be allowed during the hunting season unless approved by the Department.

NOTE: Prior to submitting applications for wetland permits to Federal and State permitting agencies the leaseholder shall coordinate project details with the Department of Wildlife and Fisheries. Contact person for the Department will be Mike Windham at (504) 284-5268.

NOTE: The Department of Wildlife & Fisheries will require a minimum bonus of \$350 per acre and a minimum royalty of 25%.

NOTE: The State of Louisiana does hereby reserve, and this lease shall be subject to, the imprescriptible right of surface use in the nature of a servitude in favor of the Department of Natural Resources, including its Offices and Commissions, for the sole purpose of implementing,

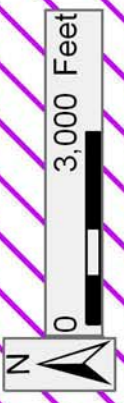
constructing, servicing and maintaining approved coastal zone management and/or restoration projects. Utilization of any and all rights derived under this lease by the mineral lessee, its agents, successors or assigns, shall not interfere with nor hinder the reasonable surface use by the Department of Natural Resources, its Offices or Commissions, as herein above reserved.

Applicant: JIL EXPLORATION, INC.

Bidder	Cash Payment	Price/Acre	Rental	Oil	Gas	Other

Legend

- 13110039
- Wildlife
- Active_Leases



TRACT 43630 - Plaquemines Parish, Louisiana

All State owned lands and water bottoms located within the boundaries of the Pass-A-Loutre Wildlife Management Area as defined by the Department of Wildlife and Fisheries incorporating a title opinion from the Office of the Governor dated August 3, 1998, not presently under mineral lease by the State of Louisiana on November 13, 2013, all as set forth following: Beginning at a point on the Eastern boundary of Pass-A-Loutre Wildlife Management Area having Coordinates of X = 2,735,714.79 and Y = 165,103.16; thence South 27 degrees 15 minutes 54 seconds West 5,484.09 feet along the Eastern boundary of said Pass-A-Loutre Wildlife Management Area to the Northeast corner of State Lease No. 21022 having Coordinates of X = 2,733,202.50 and Y = 160,228.36; thence along the boundary of said State Lease No. 21022 the following courses: South 77 degrees 14 minutes 05 seconds West 3,792.85 feet to a point having Coordinates of X = 2,729,503.40 and Y = 159,390.30 and South 01 degrees 26 minutes 37 seconds East 1,421.15 feet to the Northeast corner of State Lease No. 21023 having Coordinates of X = 2,729,539.20 and Y = 157,969.60; thence along the boundary of said State Lease No. 21023 the following courses: South 84 degrees 06 minutes 54 seconds West 7,880.73 feet to a point having Coordinates of X = 2,721,700.00 and Y = 157,161.57; South 1,661.57 feet to a point having Coordinates of X = 2,721,700.00 and Y = 155,500.00; and West 2,466.00 feet to a point having Coordinates of X = 2,719,234.00 and Y = 155,500.00; thence North 440.00 feet to a point having Coordinates of X = 2,719,234.00 and Y = 155,940.00; thence North 00 degrees 01 minutes 09 seconds West 6,928.57 feet to a point on the Southern boundary of State Lease No. 2090, as amended, having Coordinates of X = 2,719,231.67 and Y = 162,868.57; thence along the boundary of said State Lease No. 2090, as amended, the following courses: North 24 degrees 45 minutes 03 seconds East 34.61 to a point having Coordinates of X = 2,719,246.16 and Y = 162,900.00; East 403.84 feet to a point having Coordinates of X = 2,719,650.00 and Y = 162,900.00; South 1,788.83 feet to a point having Coordinates of X = 2,719,650.00 and Y = 161,111.17; and North 89 degrees 23 minutes 41 seconds East 3,959.22 feet to a point on the Western boundary of State Lease No. 1927, as amended, having Coordinates of X = 2,723,609.00 and Y = 161,153.00; thence along the boundary of said State Lease No. 1927, as amended, the following courses: South 16 degrees 03 minutes 59 seconds West 130.08 feet to a point having Coordinates of X = 2,723,573.00 and Y = 161,028.00; South 49 degrees 53 minutes 57 seconds East 74.52 feet to a point having Coordinates of X = 2,723,630.00 and Y = 160,980.00; North 48 degrees 00 minutes 47 seconds East 1,076.23 feet to a point having Coordinates of X = 2,724,429.96 and Y = 161,699.96; South 63 degrees 11 minutes 21 seconds East 502.23 feet to a point having Coordinates of X = 2,724,878.20 and Y = 161,473.43; North 59 degrees 17 minutes 02 seconds East 803.21 feet to a point having Coordinates of X = 2,725,568.73 and Y = 161,883.70; North 59 degrees 17 minutes 03 seconds East 1,228.08 feet to a point having Coordinates of X = 2,726,624.52 and Y = 162,510.98; and North 46 degrees 20 minutes 10 seconds East 3,754.45 feet to a point having Coordinates of X = 2,729,340.50 and Y = 165,103.16; thence East 6,374.29 feet to the point of beginning, **LESS AND EXCEPT** any

privately owned land that may be located within the above described Tract, if any, said tract containing **1,790.34 acres**, all as more particularly outlined on a plat on file in the Office of Mineral Resources, Department of Natural Resources. All bearings, distances and coordinates are based on Louisiana Coordinate System of 1927, (South Zone).

NOTE: The above description of the Tract nominated for lease has been provided and corrected, where required, exclusively by the nomination party. Any mineral lease selected from this Tract and awarded by the Louisiana State Mineral and Energy Board shall be without warranty of any kind, either express, implied, or statutory, including, but not limited to, the implied warranties of merchantability and fitness for a particular purpose. Should the mineral lease awarded by the Louisiana State Mineral and Energy Board be subsequently modified, cancelled or abrogated due to the existence of conflicting leases, operating agreements, private claims or other future obligations or conditions which may affect all or any portion of the leased Tract, it shall not relieve the Lessee of the obligation to pay any bonus due thereon to the Louisiana State Mineral and Energy Board, nor shall the Louisiana State Mineral and Energy Board be obligated to refund any consideration paid by the Lessor prior to such modification, cancellation, or abrogation, including, but not limited to, bonuses, rentals and royalties.

NOTE: The mineral lease is located in the Pass-A-Loutre WMA under the jurisdiction of the Louisiana Department of Wildlife and Fisheries which has promulgated rules and regulations for the protection of game and wildlife on the aforesaid Tract and, therefore, shall be subject to said rules and regulations, a copy of which shall be attached to the mineral lease. In addition to the specific rules and regulations applicable, the following shall apply regarding operations under this mineral lease:

NOTE: No activities will be allowed without written authorization from the Louisiana Department of Wildlife and Fisheries.

NOTE: Proposed projects will be evaluated on a case by case basis. Modifications to proposed project features including but not limited to access routes, spoil placement, well sites, flowlines and appurtenant structures may be required by the Department of Wildlife and Fisheries.

NOTE: Compliance with the said WMA regulations will be required unless otherwise specified by the Department of Wildlife and Fisheries.

NOTE: Compensatory mitigation will be required to offset unavoidable wetland impacts.

NOTE: Removal of all structures, facilities and equipment will be required within 120 days of abandonment unless otherwise agreed to in writing by the Louisiana Department of Wildlife and Fisheries.

NOTE: No activities will be allowed during the hunting season unless approved by the Department.

NOTE: Prior to submitting applications for wetland permits to Federal and State permitting agencies the leaseholder shall coordinate project details with the Department of Wildlife and Fisheries. Contact person for the Department will be Mike Windham at (504) 284-5268.

NOTE: The Department of Wildlife & Fisheries will require a minimum bonus of \$350 per acre and a minimum royalty of 25%.

NOTE: The State of Louisiana does hereby reserve, and this lease shall be subject to, the imprescriptible right of surface use in the nature of a servitude in favor of the Department of Natural Resources, including its Offices and Commissions, for the sole purpose of implementing, constructing, servicing and maintaining approved coastal zone management and/or restoration projects. Utilization of any and all rights derived under this lease by the mineral lessee, its agents, successors or assigns, shall not interfere with nor hinder the reasonable surface use by the Department of Natural Resources, its Offices or Commissions, as herein above reserved.

Applicant: JIL EXPLORATION, INC.

Bidder	Cash Payment	Price/Acre	Rental	Oil	Gas	Other

Legend

- 13110001
- Wildlife
- Blocks
- Active_Leases

