

TRACT 43642 - Calcasieu Parish, Louisiana

All of the mineral rights only under land adjudicated to and acquired by the State of Louisiana in and through a proper tax sale, and subsequently alienated by the State which retained the mineral rights thereto, and which is not under valid mineral lease from the State of Louisiana on November 13, 2013, situated in Calcasieu Parish, Louisiana, and being more fully described as follows: Certain tracts or parcels of land located in the Northeast Quarter of the Northeast Quarter of Section 17, Township 9 South Range 10 West, being in Phoenix Sulphur and Oil Co. Subdivision and further described as: Lots 5- 14, 79-84, 112-136, 146-151, 158, 182-197, 200-217, 280-281, 311-313, 397- 406, 492-493, 510-519, 611-616, 658, 663, 691-693, 939-948, 986-987, 1152- 1156, 1167-1175, 1179-1186, 1208, 1476-1479, 1505-1510, 1544-1558, 1594- 1596, 1631-1635, 1957-1958, 2257-2258, 2390-2394, 2414-2415, 2430-2431, 2488-2491, 2542, 2543, 2589-2594, 2607-2608, 2823-2828, 2867-2868, 2944- 2958, 2963-2964, 2966-2968, 3191-3194, 3198, 3282-3286, 3436, 3455, 3460, 3563-3572, 3820-3824, 3871, 3938-3946, 4156-4160, 4510, 4520, 4926-4928, 5076-5077, 5131, 5187-5188, 5268, 5293, 5354, 5467-5468, 5565-5566, 5608 and 5624-5626, totaling 307 lots and containing approximately **2.11 acres**, all as more particularly outlined on a plat on file in the Office of Mineral Resources, Department of Natural Resources. All bearings, distances and coordinates are based on Louisiana Coordinate System of 1927, (North or South Zone), where applicable.

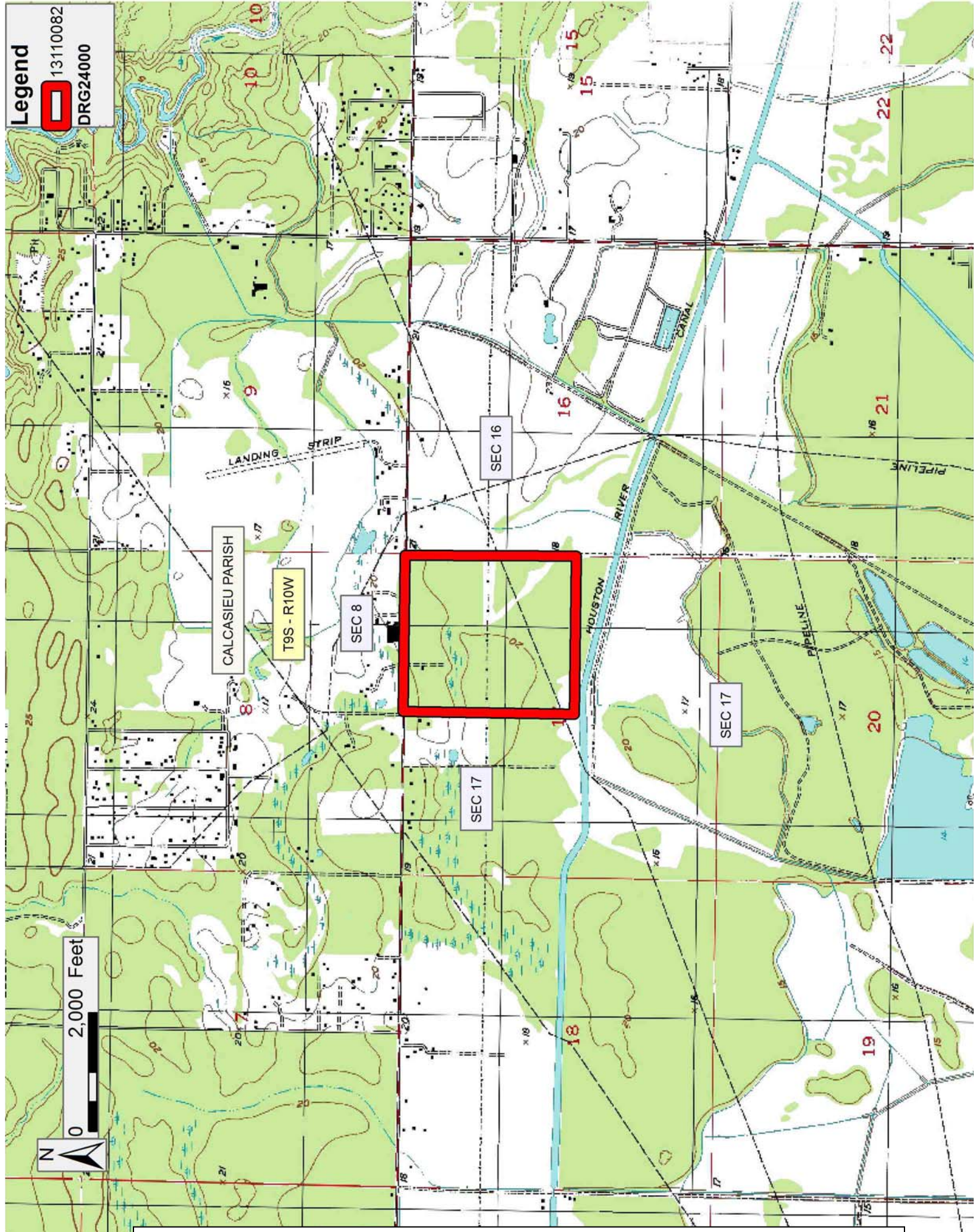
NOTE: The above description of the Tract nominated for lease has been provided and corrected, where required, exclusively by the nomination party. Any mineral lease selected from this Tract and awarded by the Louisiana State Mineral and Energy Board shall be without warranty of any kind, either express, implied, or statutory, including, but not limited to, the implied warranties of merchantability and fitness for a particular purpose. Should the mineral lease awarded by the Louisiana State Mineral and Energy Board be subsequently modified, cancelled or abrogated due to the existence of conflicting leases, operating agreements, private claims or other future obligations or conditions which may affect all or any portion of the leased Tract, it shall not relieve the Lessee of the obligation to pay any bonus due thereon to the Louisiana State Mineral and Energy Board, nor shall the Louisiana State Mineral and Energy Board be obligated to refund any consideration paid by the Lessor prior to such modification, cancellation, or abrogation, including, but not limited to, bonuses, rentals and royalties.

NOTE: No surface activity on this tract undertaken in conjunction with any operations under any mineral lease given on this tract will be allowed without prior approval of the surface owner and further, no such right of surface use shall be deemed to have been given as part of any mineral lease by the State of Louisiana on this tract.

Applicant: BASIN PROPERTIES, INC.

Bidder	Cash Payment	Price/Acre	Rental	Oil	Gas	Other

Legend
13110082
DRG24000



Office of Mineral Resources, Acres: 2.11 Tract Number: 43642

TRACT 43643 - Calcasieu Parish, Louisiana

All of the mineral rights only under land adjudicated to and acquired by the State of Louisiana in and through a proper tax sale, and subsequently alienated by the State which retained the mineral rights thereto, and which is not under valid mineral lease from the State of Louisiana on November 13, 2013, situated in Calcasieu Parish, Louisiana, and being more fully described as follows: Certain tract or parcel of land being the South Half of the Southeast Quarter of the Northwest Quarter of Section 17, Township 9 South Range 10 West, Calcasieu, Louisiana, containing approximately **20 acres**, all as more particularly outlined on a plat on file in the Office of Mineral Resources, Department of Natural Resources. All bearings, distances and coordinates are based on Louisiana Coordinate System of 1927, (North or South Zone), where applicable.

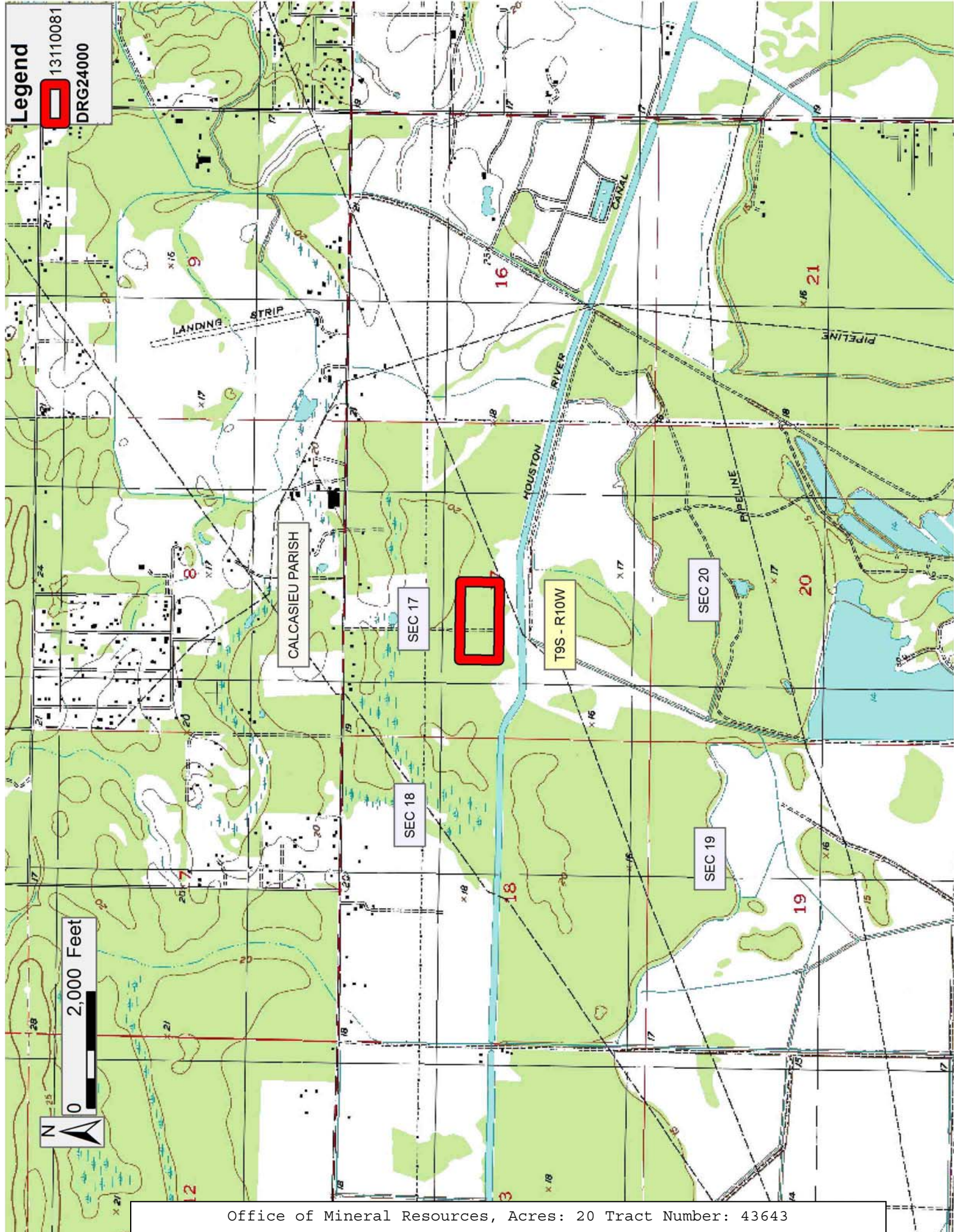
NOTE: The above description of the Tract nominated for lease has been provided and corrected, where required, exclusively by the nomination party. Any mineral lease selected from this Tract and awarded by the Louisiana State Mineral and Energy Board shall be without warranty of any kind, either express, implied, or statutory, including, but not limited to, the implied warranties of merchantability and fitness for a particular purpose. Should the mineral lease awarded by the Louisiana State Mineral and Energy Board be subsequently modified, cancelled or abrogated due to the existence of conflicting leases, operating agreements, private claims or other future obligations or conditions which may affect all or any portion of the leased Tract, it shall not relieve the Lessee of the obligation to pay any bonus due thereon to the Louisiana State Mineral and Energy Board, nor shall the Louisiana State Mineral and Energy Board be obligated to refund any consideration paid by the Lessor prior to such modification, cancellation, or abrogation, including, but not limited to, bonuses, rentals and royalties.

NOTE: No surface activity on this tract undertaken in conjunction with any operations under any mineral lease given on this tract will be allowed without prior approval of the surface owner and further, no such right of surface use shall be deemed to have been given as part of any mineral lease by the State of Louisiana on this tract.

Bidder	Cash Payment	Price/Acre	Rental	Oil	Gas	Other

Applicant: BASIN PROPERTIES, INC.

Legend
13110081
DRG24000



TRACT 43644 - Calcasieu Parish, Louisiana

All of the mineral rights only under land adjudicated to and acquired by the State of Louisiana in and through a proper tax sale, and subsequently alienated by the State which retained the mineral rights thereto, and which is not under valid mineral lease from the State of Louisiana on November 13, 2013, situated in Calcasieu Parish, Louisiana, and being more fully described as follows: Beginning at a point having Coordinates of X = 1,298,150.00 and Y = 572,150.00; thence East 2,400.00 feet to a point having Coordinates of X = 1,300,550.00 and Y = 572,150.00; thence South 3,700.00 feet to a point having Coordinates of X = 1,300,550.00 and Y = 568,450.00; thence West 2,400.00 feet to a point having Coordinates of X = 1,298,150.00 and Y = 568,450.00; thence North 3,700.00 feet to the point of beginning, more fully described as being all that portion of the East half of the Northwest Quarter of the Southwest Quarter (E/2 of NW/4 of SW/4,) containing approximately **20 acres**, all as more particularly outlined on a plat on file in the Office of Mineral Resources, Department of Natural Resources. All bearings, distances and coordinates are based on Louisiana Coordinate System of 1927, (North or South Zone), where applicable.

NOTE: The above description of the Tract nominated for lease has been provided and corrected, where required, exclusively by the nomination party. Any mineral lease selected from this Tract and awarded by the Louisiana State Mineral and Energy Board shall be without warranty of any kind, either express, implied, or statutory, including, but not limited to, the implied warranties of merchantability and fitness for a particular purpose. Should the mineral lease awarded by the Louisiana State Mineral and Energy Board be subsequently modified, cancelled or abrogated due to the existence of conflicting leases, operating agreements, private claims or other future obligations or conditions which may affect all or any portion of the leased Tract, it shall not relieve the Lessee of the obligation to pay any bonus due thereon to the Louisiana State Mineral and Energy Board, nor shall the Louisiana State Mineral and Energy Board be obligated to refund any consideration paid by the Lessor prior to such modification, cancellation, or abrogation, including, but not limited to, bonuses, rentals and royalties.

NOTE: No surface activity on this tract undertaken in conjunction with any operations under any mineral lease given on this tract will be allowed without prior approval of the surface owner and further, no such right of surface use shall be deemed to have been given as part of any mineral lease by the State of Louisiana on this tract.

Applicant: BASIN PROPERTIES, INC.

Bidder	Cash Payment	Price/Acre	Rental	Oil	Gas	Other

Legend
13110083
DRG24000

