

TRACT 43646 - Portion of Blocks 17, 18, and 34, Eugene Island Area, Revised, St. Mary Parish, Louisiana

The beds and bottoms of all water bodies belonging to the State of Louisiana located in Blocks 17, 18, and 34, Eugene Island Area, Revised, together with any present lands formed by accretion to the shoreline or islands formed therein, located in St. Mary Parish, Louisiana, owned by and not presently under mineral lease as of December 11, 2013, from the State of Louisiana, the geographical area of which is more fully described as follows: Beginning at a point having Coordinates of X = 1,967,233.00 and Y = 238,700.00; thence West 5,289.00 feet to a point having Coordinates of X = 1,961,944.00 and Y = 238,700.00; thence North 9,444.00 feet to a point having Coordinates of X = 1,961,944.00 and Y = 248,144.00; thence West 7,010.48 feet to a point having Coordinates of X = 1,954,933.52 and Y = 248,144.00; thence North 3,265.99 feet to a point having Coordinates of X = 1,954,933.52 and Y = 251,409.99; thence West 73.52 feet to a point on the boundary of State Lease No. 1536, as amended having Coordinates of X = 1,954,860.00 and Y = 251,409.99; thence along the boundaries of said State Lease No. 1536 the following courses: North 00 degrees 48 minutes 25 seconds West 710.07 feet, North 02 degrees 45 minutes 09 seconds West 1,041.20 feet, North 06 degrees 39 minutes 16 seconds West 604.07 feet, North 16 degrees 08 minutes 40 seconds West 395.60 feet and North 20 degrees 10 minutes 14 seconds West 314.25 feet to the Southwest corner of State Lease No. 16985, as amended, having Coordinates of X = 1,954,511.65 and Y = 254,434.97; thence South 60 degrees 37 minutes 51 seconds East 484.09 feet along the South boundary of said State Lease No. 16985 to its Southeast corner and the Southwest corner of State Lease No. 16988, as amended, having Coordinates of X = 1,954,933.52 and Y = 254,197.55; thence along the boundaries of said State Lease No. 16988 the following courses: South 60 degrees 37 minutes 51 seconds East 627.00 feet to a point having Coordinates of X = 1,955,479.94 and Y = 253,890.05, Southeasterly along an arc having a radius of 12,800 feet and a center located at X = 1,948,512.43 and Y = 243,152.55 to a point having Coordinates of X = 1,956,370.90 and Y = 253,256.24, Southeasterly along an arc having a radius of 28,250 feet and a center located at X = 1,939,001.41 and Y = 230,977.03 to a point having Coordinates of X = 1,959,862.45 and Y = 250,026.42, North 06 degrees 31 minutes 11 seconds East 535.60 feet to a point having Coordinates of X = 1,959,923.27 and Y = 250,558.56 and Northwesterly along an arc having a radius of 6,417 feet and a center located at X = 1,953,533.32 and Y = 251,147.17 to its Northeast corner and the South point of State Lease No. 7870, as amended, having Coordinates of X = 1,959,892.37 and Y = 252,007.63; thence along the boundary of said State Lease No. 7870 the following courses and distances: Northwesterly along an arc having a radius of 6,417 feet and a center located at X = 1,953,533.32 and Y = 251,147.17 to a point having Coordinates of X = 1,959,630.49 and Y = 253,147.79 and North 19 degrees 17 minutes 26 seconds West 702.61 feet to a point on the South boundary of the Atchafalaya Delta Wildlife Management Area having Coordinates of X = 1,959,398.37 and Y = 253,810.95; thence Southeasterly on a straight line along the South boundary of the said

Atchafalaya Delta Wildlife Management Area to a point having Coordinates of X = 1,967,233.00 and Y = 251,074.96; thence South 12,374.96 feet to the point of beginning, containing approximately **2,346.85 acres**, all as more particularly outlined on a plat on file in the Office of Mineral Resources, Department of Natural Resources. All bearings, distances and coordinates are based on Louisiana Coordinate System of 1927, (North or South Zone).

NOTE: The above description of the Tract nominated for lease has been provided and corrected, where required, exclusively by the nomination party. Any mineral lease selected from this Tract and awarded by the Louisiana State Mineral and Energy Board shall be without warranty of any kind, either express, implied, or statutory, including, but not limited to, the implied warranties of merchantability and fitness for a particular purpose. Should the mineral lease awarded by the Louisiana State Mineral and Energy Board be subsequently modified, cancelled or abrogated due to the existence of conflicting leases, operating agreements, private claims or other future obligations or conditions which may affect all or any portion of the leased Tract, it shall not relieve the Lessee of the obligation to pay any bonus due thereon to the Louisiana State Mineral and Energy Board, nor shall the Louisiana State Mineral and Energy Board be obligated to refund any consideration paid by the Lessor prior to such modification, cancellation, or abrogation, including, but not limited to, bonuses, rentals and royalties.

NOTE: The above described tract may be in the vicinity of existing shell reefs where drilling and dredging operations must be conducted in strict conformity with the regulations adopted by the Louisiana Department of Wildlife and Fisheries and/or the U.S. Corps of Engineers, U.S. Army.

NOTE: The State of Louisiana does hereby reserve, and this lease shall be subject to, the imprescriptible right of surface use in the nature of a servitude in favor of the Department of Natural Resources, including its Offices and Commissions, for the sole purpose of implementing, constructing, servicing and maintaining approved coastal zone management and/or restoration projects. Utilization of any and all rights derived under this lease by the mineral lessee, its agents, successors or assigns, shall not interfere with nor hinder the reasonable surface use by the Department of Natural Resources, its Offices or Commissions, as herein above reserved.

NOTE: It appears, according to our records, that a portion of this Tract is located within the restrictive safety fairway area as set out by the Corps of Engineers, U.S. Army and/or the restrictive anchorage area as set out by the U.S. Coast Guard.

NOTE: This tract is located in an area designated by the Louisiana Legislature or the Wildlife and Fisheries Commission as a Public Oyster Seed Ground, Reservation, or area of Calcasieu or Sabine Lake. Proposed

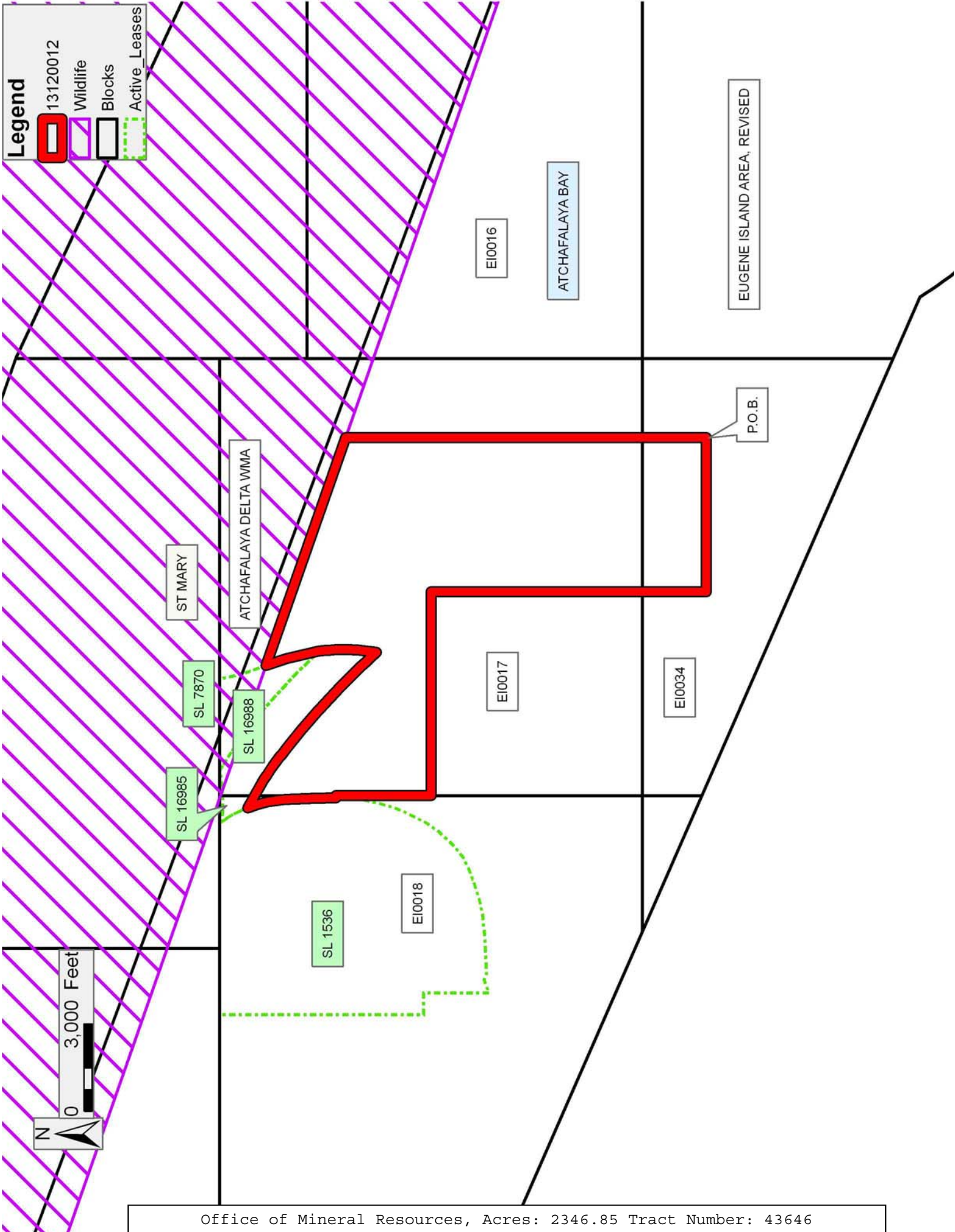
projects occurring in these areas will be evaluated on a case by case basis by Louisiana Department of Wildlife & Fisheries. Modifications to proposed project features including, but not limited to, access routes, well sites, flowlines, and appurtenant structures maybe required by the Louisiana Department of Wildlife and Fisheries. In addition, compensatory mitigation will be required to offset unavoidable habitat impacts.

Applicant: CRESCENT RESOURCES, LLC

Bidder	Cash Payment	Price/Acre	Rental	Oil	Gas	Other

Legend

- 13120012
- Wildlife
- Blocks
- Active_Leases



TRACT 43647 - Portion of Blocks 17, and 18, Eugene Island Area, Revised, St. Mary Parish, Louisiana

The beds and bottoms of all water bodies belonging to the State of Louisiana located in Blocks 17, and 18, Eugene Island Area, Revised, together with any present lands formed by accretion to the shoreline or islands formed therein, located in St. Mary Parish, Louisiana, owned by and not presently under mineral lease as of December 11, 2013, from the State of Louisiana, the geographical area of which is more fully described as follows: Beginning at a point on the South line of Block 17, Eugene Island Area, Revised having Coordinates of X = 1,961,944.00 and Y = 240,895.42; thence West 7,010.48 feet along the South line of said Block 17 to its Southwest corner and the Southeast corner of Block 18, Eugene Island Area, Revised having Coordinates of X = 1,954,933.52 and Y = 240,895.42; thence West 4,663.08 feet along the South line of said Block 18 to a point on the Three Mile Line, as decreed by the Supreme Court of the United States, as determined by a Special Master appointed therein, in litigation styled United States v. State of Louisiana et al No. 9 Original, in 1975, having Coordinates of X = 1,950,270.44 and Y = 240,895.42; thence Northwesterly on a straight line to a point having Coordinates of X = 1,944,522.00 and Y = 243,409.86; thence North 3,669.45 feet to a point on the boundary of State Lease No. 1667, as amended having Coordinates of X = 1,944,522.00 and Y = 247,079.31; thence along the boundary of said State Lease No. 1667 the following courses and distances: East 2,900.44 feet and North 1,316.11 feet to the Northernmost Southwest corner of State Lease No. 1536, as amended having Coordinates of X = 1,947,422.44 and Y = 248,395.42; thence along the boundary of said State Lease No. 1536 the following courses and distances: East 741.08 feet, South 2,246.75 feet, North 67 degrees 53 minutes 47 seconds East 482.00 feet, South 67 degrees 45 minutes 04 seconds East 237.70 feet, North 87 degrees 03 minutes 52 seconds East 1,171.54 feet, North 84 degrees 52 minutes 19 seconds East 783.13 feet, North 79 degrees 06 minutes 52 seconds East 529.53 feet, North 72 degrees 28 minutes 28 seconds East 796.99 feet, North 67 degrees 53 minutes 26 seconds East 345.40 feet, North 64 degrees 29 minutes 10 seconds East 487.54 feet, North 51 degrees 54 minutes 40 seconds East 470.11 feet, North 43 degrees 21 minutes 48 seconds East 742.77 feet, North 34 degrees 17 minutes 13 seconds East 532.54 feet, North 26 degrees 50 minutes 03 seconds East 952.58 feet, North 19 degrees 17 minutes 24 seconds East 423.79 feet, North 15 degrees 35 minutes 34 seconds East 446.43 feet, North 09 degrees 57 minutes 50 seconds East 751.33 feet and North 03 degrees 25 minutes 00 seconds East 671.19 feet to a point having Coordinates of X = 1,954,860.00 and Y = 251,409.99; thence East 73.52 feet to a point on the East line of said Block 18 having Coordinates of X = 1,954,933.52 and Y = 251,409.99; thence South 3,265.99 feet along the East line of said Block 18 to a point having Coordinates of X = 1,954,933.52 and Y = 248,144.00; thence East 7,010.48 feet to a point having Coordinates of X = 1,961,944.00 and Y = 248,144.00; thence South 7,248.58 feet to the point of beginning, containing approximately **2,499.70 acres, LESS AND EXCEPT** that portion thereof, if any, lying seaward of the line three nautical miles from the coast line of

Louisiana, as said three mile line has been decreed by the Supreme Court of the United States, as determined by a Special Master appointed therein, in litigation styled **United States v. State of Louisiana et al No. 9 Original**, in 1975, all as more particularly outlined on a plat in the Office of Mineral Resources, Department of Natural Resources. All bearings, distances and coordinates are based on the Louisiana Coordinate System of 1927, (South Zone).

NOTE: The above description of the Tract nominated for lease has been provided and corrected, where required, exclusively by the nomination party. Any mineral lease selected from this Tract and awarded by the Louisiana State Mineral and Energy Board shall be without warranty of any kind, either express, implied, or statutory, including, but not limited to, the implied warranties of merchantability and fitness for a particular purpose. Should the mineral lease awarded by the Louisiana State Mineral and Energy Board be subsequently modified, cancelled or abrogated due to the existence of conflicting leases, operating agreements, private claims or other future obligations or conditions which may affect all or any portion of the leased Tract, it shall not relieve the Lessee of the obligation to pay any bonus due thereon to the Louisiana State Mineral and Energy Board, nor shall the Louisiana State Mineral and Energy Board be obligated to refund any consideration paid by the Lessor prior to such modification, cancellation, or abrogation, including, but not limited to, bonuses, rentals and royalties.

NOTE: The above described tract may be in the vicinity of existing shell reefs where drilling and dredging operations must be conducted in strict conformity with the regulations adopted by the Louisiana Department of Wildlife and Fisheries and/or the U.S. Corps of Engineers, U.S. Army.

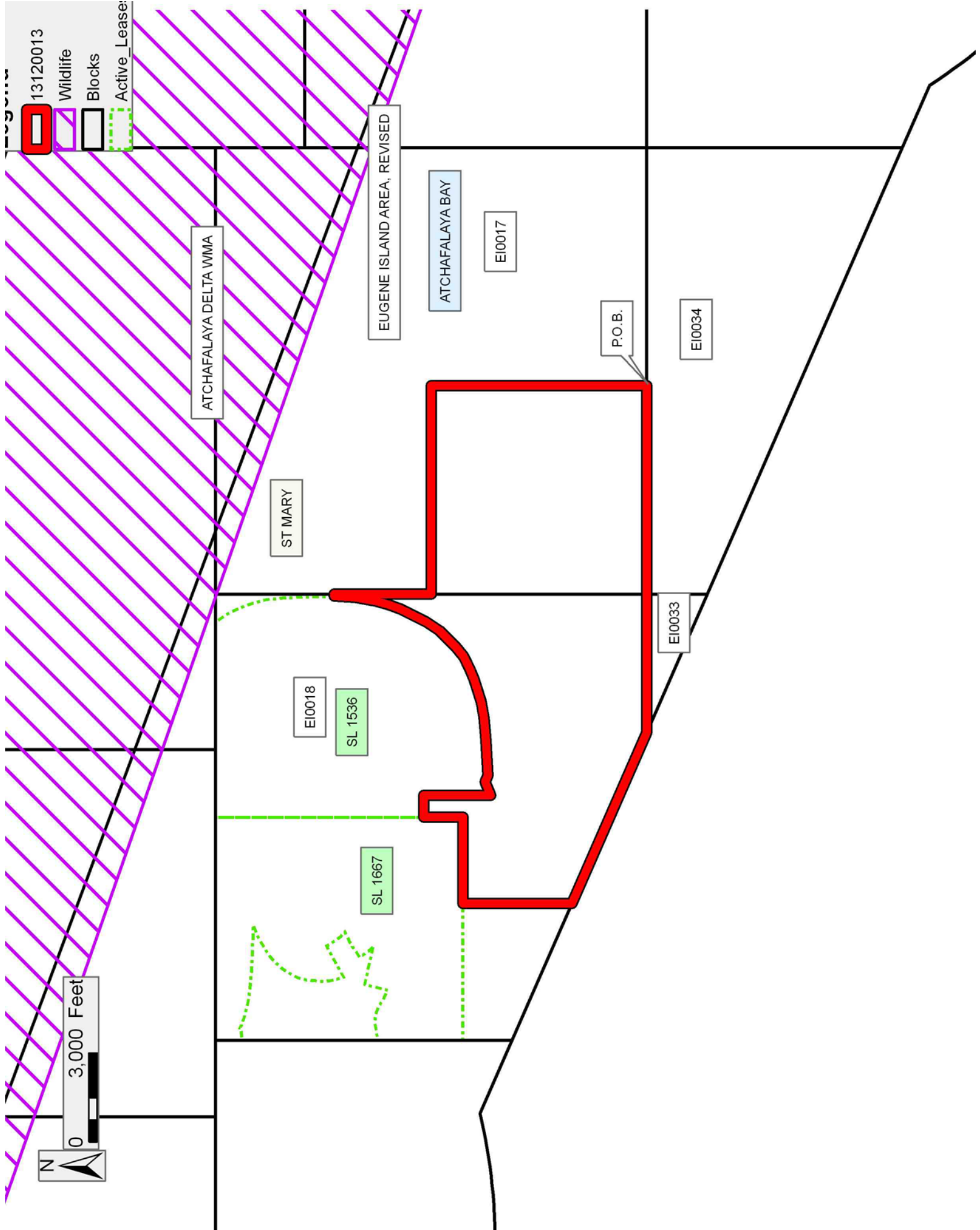
NOTE: The State of Louisiana does hereby reserve, and this lease shall be subject to, the imprescriptible right of surface use in the nature of a servitude in favor of the Department of Natural Resources, including its Offices and Commissions, for the sole purpose of implementing, constructing, servicing and maintaining approved coastal zone management and/or restoration projects. Utilization of any and all rights derived under this lease by the mineral lessee, its agents, successors or assigns, shall not interfere with nor hinder the reasonable surface use by the Department of Natural Resources, its Offices or Commissions, as herein above reserved.

NOTE: This tract is located in an area designated by the Louisiana Legislature or the Wildlife and Fisheries Commission as a Public Oyster Seed Ground, Reservation, or area of Calcasieu or Sabine Lake. Proposed projects occurring in these areas will be evaluated on a case by case basis by Louisiana Department of Wildlife & Fisheries. Modifications to proposed project features including, but not limited to, access routes, well sites, flowlines, and appurtenant structures maybe required by the

Louisiana Department of Wildlife and Fisheries. In addition, compensatory mitigation will be required to offset unavoidable habitat impacts.

Applicant: CRESCENT RESOURCES, LLC

Bidder	Cash Payment	Price/Acre	Rental	Oil	Gas	Other



TRACT 43648 - Portion of Blocks 16, 17, 34, and 35, Eugene Island Area, Revised, St. Mary Parish, Louisiana

The beds and bottoms of all water bodies belonging to the State of Louisiana located in Blocks 16, 17, 34, and 35, Eugene Island Area, Revised, together with any present lands formed by accretion to the shoreline or islands formed therein, located in St. Mary Parish, Louisiana, owned by and not presently under mineral lease as of December 11, 2013, from the State of Louisiana, the geographical area of which is more fully described as follows: Beginning at a point having Coordinates of X = 1,979,706.00 and Y = 236,843.00; thence West 12,473.00 feet to a point having Coordinates of X = 1,967,233.00 and Y = 236,843.00; thence North 14,231.96 feet to a point on the South boundary of the Atchafalaya Delta Wildlife Management Area having Coordinates of X = 1,967,233.00 and Y = 251,074.96; thence Southeasterly on a straight line along the South boundary of said Atchafalaya Delta Wildlife Management Area to a point having Coordinates of X = 1,979,706.00 and Y = 246,719.17; thence South 9,876.17 feet to the point of beginning, **LESS AND EXCEPT** those portions of State Lease No. 19720 and State Lease No. 19924 that lie within the above described tract, more particularly described as follows: Commencing at the point of beginning of the above described tract having Coordinates of X = 1,979,706.00 and Y = 236,843.00; thence North 49 degrees 31 minutes 59 seconds West 6,244.01 feet to the Southeast corner of State Lease No. 19924 having Coordinates of X = 1,974,955.68 and Y = 240,895.42; thence along the boundary of said State Lease No. 19924 the following courses and distances: West 5,000.00 feet and North 6,000.00 feet to its Northwest corner and the Northernmost Southwest corner of State Lease No. 19720 having Coordinates of X = 1,969,955.68 and Y = 246,895.42; thence along the boundary of said State Lease No. 19720 the following courses and distances: North 1,036.60 feet, North 89 degrees 58 minutes 43 seconds East 5,296.32 feet, South 57 degrees 03 minutes 33 seconds East 3,350.68 feet, South 03 degrees 26 minutes 33 seconds East 3,097.59 feet and South 89 degrees 11 minutes 44 seconds West 3,276.32 feet to its Southernmost Southwest corner and a point on the boundary of said State Lease No. 19924 having Coordinates of X = 1,974,974.00 and Y = 242,974.00; thence along the boundary of said State Lease No. 19924 the following courses and distances: South 89 degrees 11 minutes 13 seconds West 18.32 feet and South 2,078.32 feet to its Southeast corner, the above described nominated tract containing approximately **2,343.58 acres**, all as more particularly outlined on a plat on file in the Office of Mineral Resources, Department of Natural Resources. All bearings, distances and coordinates are based on Louisiana Coordinate System of 1927, (North or South Zone).

NOTE: The above description of the Tract nominated for lease has been provided and corrected, where required, exclusively by the nomination party. Any mineral lease selected from this Tract and awarded by the Louisiana State Mineral and Energy Board shall be without warranty of any kind, either express, implied, or statutory, including, but not limited to, the implied warranties of merchantability and fitness for a particular purpose. Should the mineral lease awarded by the Louisiana State Mineral

and Energy Board be subsequently modified, cancelled or abrogated due to the existence of conflicting leases, operating agreements, private claims or other future obligations or conditions which may affect all or any portion of the leased Tract, it shall not relieve the Lessee of the obligation to pay any bonus due thereon to the Louisiana State Mineral and Energy Board, nor shall the Louisiana State Mineral and Energy Board be obligated to refund any consideration paid by the Lessor prior to such modification, cancellation, or abrogation, including, but not limited to, bonuses, rentals and royalties.

NOTE: The above described tract may be in the vicinity of existing shell reefs where drilling and dredging operations must be conducted in strict conformity with the regulations adopted by the Louisiana Department of Wildlife and Fisheries and/or the U.S. Corps of Engineers, U.S. Army.

NOTE: The State of Louisiana does hereby reserve, and this lease shall be subject to, the imprescriptible right of surface use in the nature of a servitude in favor of the Department of Natural Resources, including its Offices and Commissions, for the sole purpose of implementing, constructing, servicing and maintaining approved coastal zone management and/or restoration projects. Utilization of any and all rights derived under this lease by the mineral lessee, its agents, successors or assigns, shall not interfere with nor hinder the reasonable surface use by the Department of Natural Resources, its Offices or Commissions, as herein above reserved.





NOTE: It appears, according to our records, that a portion of this Tract is located within the restrictive safety fairway area as set out by the Corps of Engineers, U.S. Army and/or the restrictive anchorage area as set out by the U.S. Coast Guard.

NOTE: This tract is located in an area designated by the Louisiana Legislature or the Wildlife and Fisheries Commission as a Public Oyster Seed Ground, Reservation, or area of Calcasieu or Sabine Lake. Proposed projects occurring in these areas will be evaluated on a case by case basis by Louisiana Department of Wildlife & Fisheries. Modifications to proposed project features including, but not limited to, access routes, well sites, flowlines, and appurtenant structures maybe required by the Louisiana Department of Wildlife and Fisheries. In addition, compensatory mitigation will be required to offset unavoidable habitat impacts.

Applicant: CRESCENT RESOURCES, LLC

Bidder	Cash Payment	Price/Acre	Rental	Oil	Gas	Other

Legend

-  13120011
-  Wildlife
-  Blocks
-  Active_Leases

