

**TRACT 43649 - Claiborne Parish, Louisiana**

All of the lands now or formerly constituting the beds and bottoms of all water bodies of every nature and description as to which title is vested in the State of Louisiana, together with all islands arising therein and other lands formed by accretion or by reliction, where allowed by law, excepting tax adjudicated lands, and not presently under mineral lease on December 11, 2013, situated in Claiborne Parish, Louisiana, and more particularly described as follows: Beginning at a point having Coordinates of X = 1,893,214.25 and Y = 847,764.15; thence South 40 degrees 22 minute South 43 seconds West 11,301.10 feet to a point having Coordinates of X = 1,885,892.98 and Y = 839,155.21; thence North 48 degrees 00 minutes 00 seconds West 17,127.88 feet to a point having Coordinates of X = 1,873,164.49 and Y = 850,616.00; thence North 03 degrees 00 minutes 53 seconds East 4,412.11 feet to a point having Coordinates of X = 1,873,396.53 and Y = 855,022.00; thence South 88 degrees 53 minutes 07 seconds East 5,988.96 feet to a point having Coordinates of X = 1,879,384.36 and Y = 854,905.48; thence South 62 degrees 41 minutes 23 seconds East 15,564.85 feet to the point of beginning **LESS AND EXCEPT** any right, title, and interest in lands owned by and not under lease from the State of Louisiana, on behalf of the Claiborne Parish School Board, situated in Section 16, Township 23 North, Range 5 West, Claiborne Parish, Louisiana, contained within the above described tract, (This lease includes only waterbottoms claimed and owned by the state and specifically excludes any land which the state may claim or own and to which the mineral rights are vested in the state), containing approximately **48 acres**, all as more particularly outlined on a plat on file in the Office of Mineral Resources, Department of Natural Resources. All bearings, distances and coordinates are based on Louisiana Coordinate System of 1927, (North or South Zone), where applicable.

NOTE: The above description of the Tract nominated for lease has been provided and corrected, where required, exclusively by the nomination party. Any mineral lease selected from this Tract and awarded by the Louisiana State Mineral and Energy Board shall be without warranty of any kind, either express, implied, or statutory, including, but not limited to, the implied warranties of merchantability and fitness for a particular purpose. Should the mineral lease awarded by the Louisiana State Mineral and Energy Board be subsequently modified, cancelled or abrogated due to the existence of conflicting leases, operating agreements, private claims or other future obligations or conditions which may affect all or any portion of the leased Tract, it shall not relieve the Lessee of the obligation to pay any bonus due thereon to the Louisiana State Mineral and Energy Board, nor shall the Louisiana State Mineral and Energy Board be obligated to refund any consideration paid by the Lessor prior to such modification, cancellation, or abrogation, including, but not limited to, bonuses, rentals and royalties.

NOTE: The above Tract is located upon a restricted scenic river and all operations in this area must be conducted in strict conformity with the regulations of the Corps of Engineers, U.S. Army.

Applicant: T.S. DUDLEY LAND COMPANY, INC.

Bidder	Cash Payment	Price/Acre	Rental	Oil	Gas	Other

Legend



13120021



0 3,000 Feet

CLAIBORNE

P.O.B.

CORNEY CREEK

T23N - R5W



**TRACT 43650 - Union Parish, Louisiana**

All of the lands now or formerly constituting the beds and bottoms of all water bodies of every nature and description as to which title is vested in the State of Louisiana, together with all islands arising therein and other lands formed by accretion or by reliction, where allowed by law, excepting tax adjudicated lands, and not presently under mineral lease on December 11, 2013, situated in Union Parish, Louisiana, and more particularly described as follows: Beginning at a point having Coordinates of X = 1,947,098.31 and Y = 853,864.14; thence South 38 degrees 31 minutes 41 seconds East 11,028.25 feet to a point having Coordinates of X = 1,953,967.80 and Y = 845,236.71; thence North 89 degrees 57 minutes 58 seconds West 17,538.33 feet to a point having Coordinates of X = 1,936,429.47 and Y = 845,247.10; thence North 00 degrees 32 minutes 17 seconds East 8,773.08 feet to a point having Coordinates of X = 1,936,511.86 and Y = 854,019.79; thence South 89 degrees 09 minutes 27 seconds East 10,587.59 feet to the point of beginning, (This nomination includes only waterbottoms claimed and owned by the state and specifically excludes any School Indemnity Land located within the above described tract) containing approximately **14 acres**, all as more particularly outlined on a plat on file in the Office of Mineral Resources, Department of Natural Resources. All bearings, distances and coordinates are based on Louisiana Coordinate System of 1927, (North or South Zone), where applicable.

NOTE: The above description of the Tract nominated for lease has been provided and corrected, where required, exclusively by the nomination party. Any mineral lease selected from this Tract and awarded by the Louisiana State Mineral and Energy Board shall be without warranty of any kind, either express, implied, or statutory, including, but not limited to, the implied warranties of merchantability and fitness for a particular purpose. Should the mineral lease awarded by the Louisiana State Mineral and Energy Board be subsequently modified, cancelled or abrogated due to the existence of conflicting leases, operating agreements, private claims or other future obligations or conditions which may affect all or any portion of the leased Tract, it shall not relieve the Lessee of the obligation to pay any bonus due thereon to the Louisiana State Mineral and Energy Board, nor shall the Louisiana State Mineral and Energy Board be obligated to refund any consideration paid by the Lessor prior to such modification, cancellation, or abrogation, including, but not limited to, bonuses, rentals and royalties.

Applicant: T.S. DUDLEY LAND COMPANY, INC.

Bidder	Cash Payment	Price/Acre	Rental	Oil	Gas	Other



Legend



13120014

Active\_Leases



0 3,000 Feet

P.O.B.

UNION

T23N - R3W

LITTLE CORNEY BAYOU

CLAIBORNE



**TRACT 43651 - Claiborne Parish, Louisiana**

All of the lands now or formerly constituting the beds and bottoms of all water bodies of every nature and description as to which title is vested in the State of Louisiana, together with all islands arising therein and other lands formed by accretion or by reliction, where allowed by law, excepting tax adjudicated lands, and not presently under mineral lease on December 11, 2013, situated in Claiborne Parish, Louisiana, and more particularly described as follows: Beginning at a point being the Northwest corner of State Lease No. 20653 having Coordinates of X = 1,907,988.59 and Y = 836,622.73; thence South 41 degrees 01 minutes 24 seconds West 11,165.90 feet along the boundary of said State Lease No. 20653 to a point being its Southwest corner having Coordinates of X = 1,900,659.67 and Y = 828,198.70; thence North 53 degrees 25 minutes 32 seconds West 18,387.50 feet to a point having Coordinates of X = 1,885,892.98 and Y = 839,155.21; thence North 40 degrees 22 minutes 43 seconds East 12,908.01 feet to a point having Coordinates of X = 1,894,255.27 and Y = 848,988.27; thence South 48 degrees 00 minutes 00 seconds East 18,480.00 feet to the point of beginning, containing approximately **42 acres**, all as more particularly outlined on a plat on file in the Office of Mineral Resources, Department of Natural Resources. All bearings, distances and coordinates are based on Louisiana Coordinate System of 1927, (North or South Zone), where applicable.

NOTE: The above description of the Tract nominated for lease has been provided and corrected, where required, exclusively by the nomination party. Any mineral lease selected from this Tract and awarded by the Louisiana State Mineral and Energy Board shall be without warranty of any kind, either express, implied, or statutory, including, but not limited to, the implied warranties of merchantability and fitness for a particular purpose. Should the mineral lease awarded by the Louisiana State Mineral and Energy Board be subsequently modified, cancelled or abrogated due to the existence of conflicting leases, operating agreements, private claims or other future obligations or conditions which may affect all or any portion of the leased Tract, it shall not relieve the Lessee of the obligation to pay any bonus due thereon to the Louisiana State Mineral and Energy Board, nor shall the Louisiana State Mineral and Energy Board be obligated to refund any consideration paid by the Lessor prior to such modification, cancellation, or abrogation, including, but not limited to, bonuses, rentals and royalties.

NOTE: The above Tract is located upon a restricted scenic river and all operations in this area must be conducted in strict conformity with the regulations of the Corps of Engineers, U.S. Army.

Applicant: T.S. DUDLEY LAND COMPANY, INC.

Bidder	Cash Payment	Price/Acre	Rental	Oil	Gas	Other



**Legend**

13120022



Active\_Leases



CLAIBORNE

T23N - R4W

T23N - R5W

CORNEY CREEK

P.O.B.

SL 20653



**TRACT 43652 - Union Parish, Louisiana**

All of the lands now or formerly constituting the beds and bottoms of all water bodies of every nature and description as to which title is vested in the State of Louisiana, together with all islands arising therein and other lands formed by accretion or by reliction, where allowed by law, excepting tax adjudicated lands, and not presently under mineral lease on December 11, 2013, situated in Union Parish, Louisiana, and more particularly described as follows: Beginning at a point having Coordinates of X = 1,953,967.80 and Y = 845,236.71; thence South 35 degrees 00 minutes 00 seconds East 15,039.42 feet to a point having Coordinates of X = 1,962,594.06 and Y = 832,917.13; thence West 18,000.00 feet to a point having Coordinates of X = 1,944,594.06 and Y = 832,917.13; thence North 33 degrees 30 minutes 41 seconds West 14,788.12 feet to a point having Coordinates of X = 1,936,429.47 and Y = 845,247.10; thence South 89 degrees 57 minutes 58 seconds East 17,538.33 feet to the point of beginning **LESS AND EXCEPT** any right, title, and interest in lands owned by and not under lease from the State of Louisiana, on behalf of the Union Parish School Board, situated in Section 16, Township 23 North, Range 3 West, Union Parish, Louisiana, contained within the above described tract, containing approximately **21 acres**, all as more particularly outlined on a plat on file in the Office of Mineral Resources, Department of Natural Resources. All bearings, distances and coordinates are based on Louisiana Coordinate System of 1927, (North or South Zone), where applicable.

NOTE: The above description of the Tract nominated for lease has been provided and corrected, where required, exclusively by the nomination party. Any mineral lease selected from this Tract and awarded by the Louisiana State Mineral and Energy Board shall be without warranty of any kind, either express, implied, or statutory, including, but not limited to, the implied warranties of merchantability and fitness for a particular purpose. Should the mineral lease awarded by the Louisiana State Mineral and Energy Board be subsequently modified, cancelled or abrogated due to the existence of conflicting leases, operating agreements, private claims or other future obligations or conditions which may affect all or any portion of the leased Tract, it shall not relieve the Lessee of the obligation to pay any bonus due thereon to the Louisiana State Mineral and Energy Board, nor shall the Louisiana State Mineral and Energy Board be obligated to refund any consideration paid by the Lessor prior to such modification, cancellation, or abrogation, including, but not limited to, bonuses, rentals and royalties.

Applicant: T.S. DUDLEY LAND COMPANY, INC.

Bidder	Cash Payment	Price/Acre	Rental	Oil	Gas	Other



Legend  
13120015



T23N - R2W

T23N - R3W

P.O.B.

UNION

LITTLE CORNEY BAYOU





**TRACT 43653 - Union Parish, Louisiana**

All of the lands now or formerly constituting the beds and bottoms of all water bodies of every nature and description as to which title is vested in the State of Louisiana, together with all islands arising therein and other lands formed by accretion or by reliction, where allowed by law, excepting tax adjudicated lands, and not presently under mineral lease on December 11, 2013, situated in Union Parish, Louisiana, and more particularly described as follows: Beginning at a point having Coordinates of X = 1,957,446.36 and Y = 832,917.13; thence South 35 degrees 00 minutes 00 Seconds East 18,480.00 feet to a point having Coordinates of X = 1,968,046.05 and Y = 817,779.20; thence North 89 degrees 43 minutes 22 seconds West 10,539.06 feet to a point having Coordinates of X = 1,957,507.04 and Y = 817,811.83 said point being a Northern corner of State Lease No. 20880; thence continue North 89 degrees 35 minutes 18 seconds West 7,464.51 feet along the Northern border of State Lease No. 20880 to a point having Coordinates of X = 1,950,042.72 and Y = 817,865.48 said point being the Northwest corner of State Lease No. 20880; thence North 35 degrees 08 minutes 44 seconds West 18,407.48 feet to a point having Coordinates of X = 1,939,446.36 and Y = 832,917.13; thence East 18,000.00 feet to the point of beginning, (This lease includes only waterbottoms claimed and owned by the state and specifically excludes any land which the state may claim or own and to which the mineral rights are vested in the state), containing approximately **39 acres**, all as more particularly outlined on a plat on file in the Office of Mineral Resources, Department of Natural Resources. All bearings, distances and coordinates are based on Louisiana Coordinate System of 1927, (North or South Zone), where applicable.

NOTE: The above description of the Tract nominated for lease has been provided and corrected, where required, exclusively by the nomination party. Any mineral lease selected from this Tract and awarded by the Louisiana State Mineral and Energy Board shall be without warranty of any kind, either express, implied, or statutory, including, but not limited to, the implied warranties of merchantability and fitness for a particular purpose. Should the mineral lease awarded by the Louisiana State Mineral and Energy Board be subsequently modified, cancelled or abrogated due to the existence of conflicting leases, operating agreements, private claims or other future obligations or conditions which may affect all or any portion of the leased Tract, it shall not relieve the Lessee of the obligation to pay any bonus due thereon to the Louisiana State Mineral and Energy Board, nor shall the Louisiana State Mineral and Energy Board be obligated to refund any consideration paid by the Lessor prior to such modification, cancellation, or abrogation, including, but not limited to, bonuses, rentals and royalties.

Applicant: T.S. DUDLEY LAND COMPANY, INC.

Bidder	Cash Payment	Price/Acre	Rental	Oil	Gas	Other



**Legend**  
13120036  
Active\_Leases



UNION

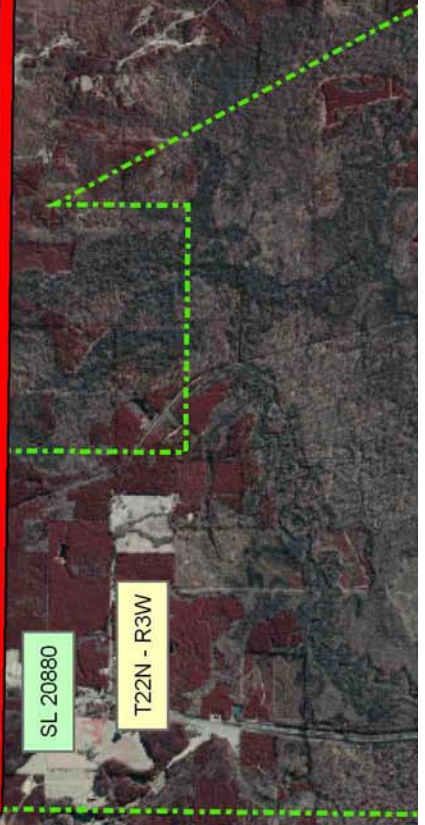
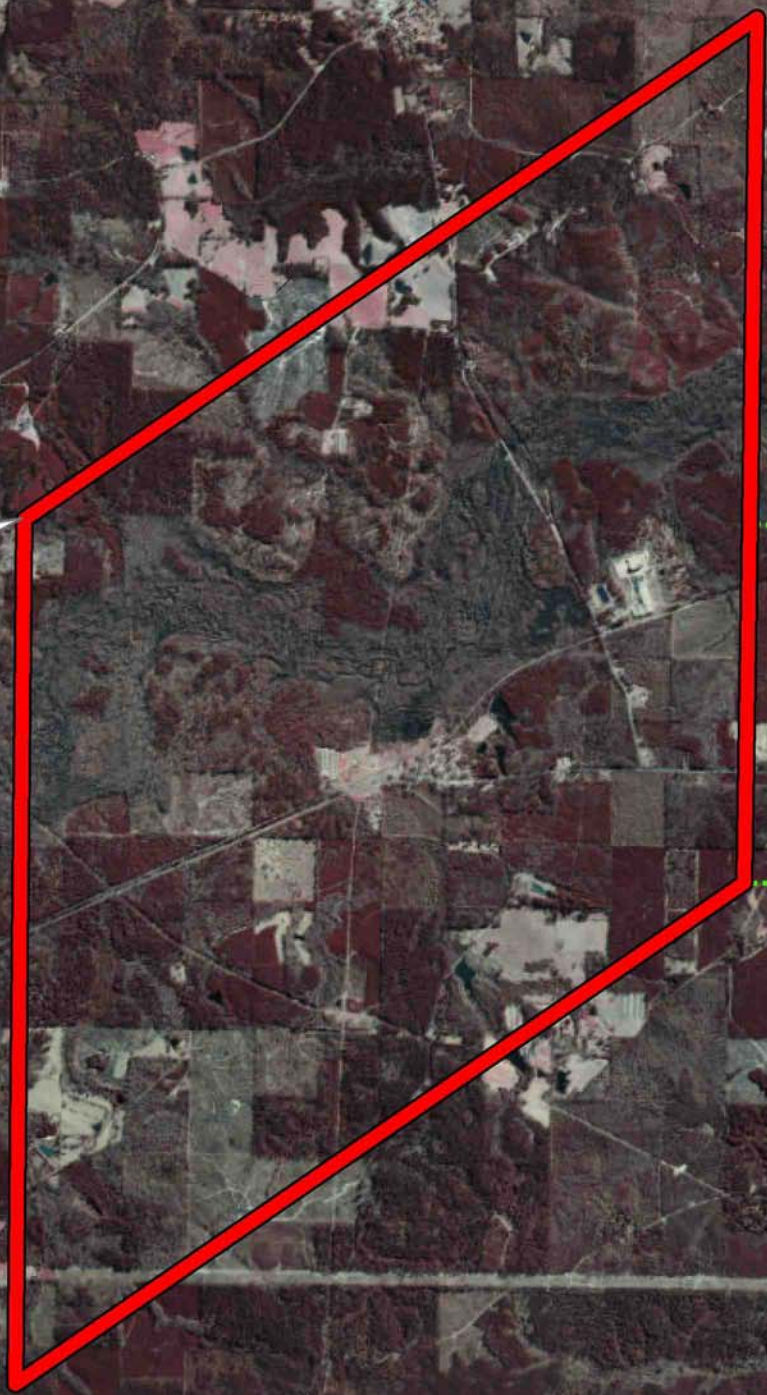
LITTLE CORNEY BAYOU

P.O.B.

T23N - R3W

SL 20880

T22N - R3W





**TRACT 43654 - Union Parish, Louisiana**

All of the lands now or formerly constituting the beds and bottoms of all water bodies of every nature and description as to which title is vested in the State of Louisiana, together with all islands arising therein and other lands formed by accretion or by reliction, where allowed by law, excepting tax adjudicated lands, and not presently under mineral lease on December 11, 2013, situated in Union Parish, Louisiana, and more particularly described as follows: Beginning at a point having Coordinates of X = 2,020,767.25 and Y = 822,755.21; thence South 35 degrees 00 minutes 00 seconds East 18,480.00 feet to a point having Coordinates of X = 2,031,366.94 and Y = 807,617.28; thence West 18,480.00 feet to a point having Coordinates of X = 2,012,886.94 and Y = 807,617.28; thence North 35 degrees 00 minutes 00 seconds West 18,480.00 feet to a point having Coordinates of X = 2,002,287.25 and Y = 822,755.21, said point being on the Southern boundary of State Lease No. 20652; thence East 14,087.13 feet along the Southern boundary of said State Lease No. 20652 to a point having Coordinates of X = 2,016,374.38 and Y = 822,755.21, said point being the Southeast corner of said State Lease No. 20652; thence East 4,392.87 feet to the point of beginning, **LESS AND EXCEPT** any right, title, and interest in lands owned by and not under lease from the State of Louisiana, on behalf of the Union Parish School Board, situated in Section 16, Township 22 North, Range 1 West, Union Parish, Louisiana, contained within the above described tract, containing approximately **33 acres**, all as more particularly outlined on a plat on file in the Office of Mineral Resources, Department of Natural Resources. All bearings, distances and coordinates are based on Louisiana Coordinate System of 1927, (North or South Zone), where applicable.

NOTE: The above description of the Tract nominated for lease has been provided and corrected, where required, exclusively by the nomination party. Any mineral lease selected from this Tract and awarded by the Louisiana State Mineral and Energy Board shall be without warranty of any kind, either express, implied, or statutory, including, but not limited to, the implied warranties of merchantability and fitness for a particular purpose. Should the mineral lease awarded by the Louisiana State Mineral and Energy Board be subsequently modified, cancelled or abrogated due to the existence of conflicting leases, operating agreements, private claims or other future obligations or conditions which may affect all or any portion of the leased Tract, it shall not relieve the Lessee of the obligation to pay any bonus due thereon to the Louisiana State Mineral and Energy Board, nor shall the Louisiana State Mineral and Energy Board be obligated to refund any consideration paid by the Lessor prior to such modification, cancellation, or abrogation, including, but not limited to, bonuses, rentals and royalties.

NOTE: The above Tract is located upon a restricted scenic river and all operations in this area must be conducted in strict conformity with the regulations of the Corps of Engineers, U.S. Army.

Applicant: T.S. DUDLEY LAND COMPANY, INC.

Bidder	Cash Payment	Price/Acre	Rental	Oil	Gas	Other



**Legend**

- 13120037
- Active\_Leases



0 3,000 Feet

SL 20652

UNION

T23N - R1W

P.O.B.

T22N - R1W

BAYOU DE LOUTRE



**TRACT 43655 - Union Parish, Louisiana**

All of the lands now or formerly constituting the beds and bottoms of all water bodies of every nature and description as to which title is vested in the State of Louisiana, together with all islands arising therein and other lands formed by accretion or by reliction, where allowed by law, excepting tax adjudicated lands, and not presently under mineral lease on December 11, 2013, situated in Union Parish, Louisiana, and more particularly described as follows: Beginning at a point having Coordinates of X = 1,962,035.68 and Y = 817,797.81; thence South 29 degrees 07 minutes 24 seconds East 1,254.37 feet to a point having Coordinates of X = 1,962,646.17 and Y = 816,702.03 and being the Northeast corner of State Lease No. 20880; thence South 2,753.94 feet along the border of State Lease No. 20880 to a point having Coordinates of X = 1,962,646.17 and Y = 813,948.09, being a corner of said State Lease No. 20880; thence West 5,139.13 feet to a point having Coordinates of X = 1,957,507.04 and Y = 813,948.09, said point being a corner of said State Lease No. 20880; thence North 3,863.74 feet to a point having Coordinates of X = 1,957,507.04 and Y = 817,811.83, said point being a Northern corner of said State Lease No. 20880; thence South 89 degrees 49 minutes 22 seconds East 4,528.66 feet to the point of beginning, (This tract includes only waterbottoms claimed and owned by the state and specifically excludes any land which the state may claim or own and to which the mineral rights are vested in the state), containing approximately **6 acres**, all as more particularly outlined on a plat on file in the Office of Mineral Resources, Department of Natural Resources. All bearings, distances and coordinates are based on Louisiana Coordinate System of 1927, (North or South Zone), where applicable.

NOTE: The above description of the Tract nominated for lease has been provided and corrected, where required, exclusively by the nomination party. Any mineral lease selected from this Tract and awarded by the Louisiana State Mineral and Energy Board shall be without warranty of any kind, either express, implied, or statutory, including, but not limited to, the implied warranties of merchantability and fitness for a particular purpose. Should the mineral lease awarded by the Louisiana State Mineral and Energy Board be subsequently modified, cancelled or abrogated due to the existence of conflicting leases, operating agreements, private claims or other future obligations or conditions which may affect all or any portion of the leased Tract, it shall not relieve the Lessee of the obligation to pay any bonus due thereon to the Louisiana State Mineral and Energy Board, nor shall the Louisiana State Mineral and Energy Board be obligated to refund any consideration paid by the Lessor prior to such modification, cancellation, or abrogation, including, but not limited to, bonuses, rentals and royalties.

Applicant: T.S. DUDLEY LAND COMPANY, INC.

Bidder	Cash Payment	Price/Acre	Rental	Oil	Gas	Other



**Legend**  
13120038  
Active\_Leases



T22N - R2W

P.O.B.

LITTLE CORNEY BAYOU

UNION

T22N - R3W

SL 20880



**TRACT 43656 - Union Parish, Louisiana**

All of the lands now or formerly constituting the beds and bottoms of all water bodies of every nature and description as to which title is vested in the State of Louisiana, together with all islands arising therein and other lands formed by accretion or by reliction, where allowed by law, excepting tax adjudicated lands, and not presently under mineral lease on December 11, 2013, situated in Union Parish, Louisiana, and more particularly described as follows: Beginning at a point having Coordinates of X = 1,970,249.76 and Y = 810,014.75; thence South 48 degrees 17 minutes 06 seconds East 18,227.83 feet to a point having Coordinates of X = 1,983,856.18 and Y = 797,885.48; thence South 61 degrees 49 minutes 15 seconds West 12,829.43 feet to a point having Coordinates of X = 1,972,547.35 and Y = 791,827.05; thence North 39 degrees 08 minutes 54 seconds West 18,001.45 feet to a point being a Southeastern corner of State Lease No. 20880 and having Coordinates of X = 1,961,182.50 and Y = 805,787.43; thence along the boundary of said State Lease No. 20880: North 65 degrees 00 minutes 15 seconds East 6,607.80 feet to a point being a Southeastern corner of said State Lease No. 20880 and having Coordinates of X = 1,967,171.41 and Y = 808,579.56; thence North 65 degrees 00 minutes 15 seconds East 3,396.47 feet to the point of beginning, containing approximately **48 acres**, all as more particularly outlined on a plat on file in the Office of Mineral Resources, Department of Natural Resources. All bearings, distances and coordinates are based on Louisiana Coordinate System of 1927, (North or South Zone), where applicable.

NOTE: The above description of the Tract nominated for lease has been provided and corrected, where required, exclusively by the nomination party. Any mineral lease selected from this Tract and awarded by the Louisiana State Mineral and Energy Board shall be without warranty of any kind, either express, implied, or statutory, including, but not limited to, the implied warranties of merchantability and fitness for a particular purpose. Should the mineral lease awarded by the Louisiana State Mineral and Energy Board be subsequently modified, cancelled or abrogated due to the existence of conflicting leases, operating agreements, private claims or other future obligations or conditions which may affect all or any portion of the leased Tract, it shall not relieve the Lessee of the obligation to pay any bonus due thereon to the Louisiana State Mineral and Energy Board, nor shall the Louisiana State Mineral and Energy Board be obligated to refund any consideration paid by the Lessor prior to such modification, cancellation, or abrogation, including, but not limited to, bonuses, rentals and royalties.

NOTE: The above Tract is located upon a restricted scenic river and all operations in this area must be conducted in strict conformity with the regulations of the Corps of Engineers, U.S. Army.

Applicant: T.S. DUDLEY LAND COMPANY, INC.

Bidder	Cash Payment	Price/Acre	Rental	Oil	Gas	Other



**Legend**

13120039  
Active\_Leases

UNION

T22N - R2W

CORNEY CREEK

P.O.B.

T21N - R2W



0 3,000 Feet

SL 20880





**TRACT 43657 - Union Parish, Louisiana**

All of the lands now or formerly constituting the beds and bottoms of all water bodies of every nature and description as to which title is vested in the State of Louisiana, together with all islands arising therein and other lands formed by accretion or by reliction, where allowed by law, excepting tax adjudicated lands, and not presently under mineral lease on December 11, 2013, situated in Union Parish, Louisiana, and more particularly described as follows: Beginning at a point having Coordinates of X = 2,038,296.97 and Y = 807,617.28; thence South 52 degrees 00 minutes 00 seconds East 18,480.00 feet to a point having Coordinates of X = 2,052,859.41 and Y = 796,239.85; thence West 18,480.00 feet to a point having Coordinates of X = 2,034,379.41 and Y = 796,239.85; thence North 52 degrees 00 minutes 00 seconds West 18,480.00 feet to a point having Coordinates of X = 2,019,816.97 and Y = 807,617.28; thence East 18,480.00 feet to the point of beginning, containing approximately **72 acres**, all as more particularly outlined on a plat on file in the Office of Mineral Resources, Department of Natural Resources. All bearings, distances and coordinates are based on Louisiana Coordinate System of 1927, (North or South Zone), where applicable.

NOTE: The above description of the Tract nominated for lease has been provided and corrected, where required, exclusively by the nomination party. Any mineral lease selected from this Tract and awarded by the Louisiana State Mineral and Energy Board shall be without warranty of any kind, either express, implied, or statutory, including, but not limited to, the implied warranties of merchantability and fitness for a particular purpose. Should the mineral lease awarded by the Louisiana State Mineral and Energy Board be subsequently modified, cancelled or abrogated due to the existence of conflicting leases, operating agreements, private claims or other future obligations or conditions which may affect all or any portion of the leased Tract, it shall not relieve the Lessee of the obligation to pay any bonus due thereon to the Louisiana State Mineral and Energy Board, nor shall the Louisiana State Mineral and Energy Board be obligated to refund any consideration paid by the Lessor prior to such modification, cancellation, or abrogation, including, but not limited to, bonuses, rentals and royalties.

NOTE: The above Tract is located upon a restricted scenic river and all operations in this area must be conducted in strict conformity with the regulations of the Corps of Engineers, U.S. Army.

Applicant: T.S. DUDLEY LAND COMPANY, INC.

Bidder	Cash Payment	Price/Acre	Rental	Oil	Gas	Other



13120011



0 3,000 Feet

UNION

BAYOU DE LOUTRE

T22N - R1E

P.O.B.

T22N - R1W





**TRACT 43658 - Union Parish, Louisiana**

All of the lands now or formerly constituting the beds and bottoms of all water bodies of every nature and description as to which title is vested in the State of Louisiana, together with all islands arising therein and other lands formed by accretion or by reliction, where allowed by law, excepting tax adjudicated lands, and not presently under mineral lease on December 11, 2013, situated in Union Parish, Louisiana, and more particularly described as follows: Beginning at a point having Coordinates of X = 1,983,856.18 and Y = 797,885.48; thence South 44 degrees 58 minutes 50 seconds East 15,020.05 feet to a point having Coordinates of X = 1,994,473.34 and Y = 787,261.08; thence South 46 degrees 44 minutes 04 seconds West 10,669.64 feet to a point having Coordinates of X = 1,986,703.85 and Y = 779,948.33; thence North 50 degrees 00 minutes 00 seconds West 18,480.00 feet to a point having Coordinates of X = 1,972,547.35 and Y = 791,827.05; thence North 61 degrees 49 minutes 15 seconds East 12,829.43 feet to the point of beginning, (This lease includes only waterbottoms claimed and owned by the state and specifically excludes any land which the state may claim or own and to which the mineral rights are vested in the state), containing approximately **94 acres**, all as more particularly outlined on a plat on file in the Office of Mineral Resources, Department of Natural Resources. All bearings, distances and coordinates are based on Louisiana Coordinate System of 1927, (North or South Zone), where applicable.

NOTE: The above description of the Tract nominated for lease has been provided and corrected, where required, exclusively by the nomination party. Any mineral lease selected from this Tract and awarded by the Louisiana State Mineral and Energy Board shall be without warranty of any kind, either express, implied, or statutory, including, but not limited to, the implied warranties of merchantability and fitness for a particular purpose. Should the mineral lease awarded by the Louisiana State Mineral and Energy Board be subsequently modified, cancelled or abrogated due to the existence of conflicting leases, operating agreements, private claims or other future obligations or conditions which may affect all or any portion of the leased Tract, it shall not relieve the Lessee of the obligation to pay any bonus due thereon to the Louisiana State Mineral and Energy Board, nor shall the Louisiana State Mineral and Energy Board be obligated to refund any consideration paid by the Lessor prior to such modification, cancellation, or abrogation, including, but not limited to, bonuses, rentals and royalties.

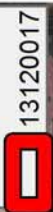
NOTE: The above Tract is located upon a restricted scenic river and all operations in this area must be conducted in strict conformity with the regulations of the Corps of Engineers, U.S. Army.

Applicant: T.S. DUDLEY LAND COMPANY, INC.

Bidder	Cash Payment	Price/Acre	Rental	Oil	Gas	Other



Legend



T22N - R1W

CORNEY CREEK

UNION

T22N - R2W

P.O.B.

T21N - R2W

