

TRACT 43659 - Union Parish, Louisiana

All of the lands now or formerly constituting the beds and bottoms of all water bodies of every nature and description as to which title is vested in the State of Louisiana, together with all islands arising therein and other lands formed by accretion or by reliction, where allowed by law, excepting tax adjudicated lands, and not presently under mineral lease on December 11, 2013, situated in Union Parish, Louisiana, and more particularly described as follows: Beginning at a point having Coordinates of X = 2,055,399.64 and Y = 796,239.85; thence South 52 degrees 00 minutes 00 seconds East 18,480.00 feet to a point having Coordinates of X = 2,069,962.08 and Y = 784,862.43; thence West 18,480.00 feet to a point having Coordinates of X = 2,051,482.08 and Y = 784,862.43; thence North 52 degrees 00 minutes 00 seconds West 18,480.00 feet to a point having Coordinates of X = 2,036,919.64 and Y = 796,239.85; thence East 18,480.00 feet to the point of beginning, containing approximately **48 acres**, all as more particularly outlined on a plat on file in the Office of Mineral Resources, Department of Natural Resources. All bearings, distances and coordinates are based on Louisiana Coordinate System of 1927, (North or South Zone), where applicable.

NOTE: The above description of the Tract nominated for lease has been provided and corrected, where required, exclusively by the nomination party. Any mineral lease selected from this Tract and awarded by the Louisiana State Mineral and Energy Board shall be without warranty of any kind, either express, implied, or statutory, including, but not limited to, the implied warranties of merchantability and fitness for a particular purpose. Should the mineral lease awarded by the Louisiana State Mineral and Energy Board be subsequently modified, cancelled or abrogated due to the existence of conflicting leases, operating agreements, private claims or other future obligations or conditions which may affect all or any portion of the leased Tract, it shall not relieve the Lessee of the obligation to pay any bonus due thereon to the Louisiana State Mineral and Energy Board, nor shall the Louisiana State Mineral and Energy Board be obligated to refund any consideration paid by the Lessor prior to such modification, cancellation, or abrogation, including, but not limited to, bonuses, rentals and royalties.

NOTE: The above Tract is located upon a restricted scenic river and all operations in this area must be conducted in strict conformity with the regulations of the Corps of Engineers, U.S. Army.

Applicant: T.S. DUDLEY LAND COMPANY, INC.

Bidder	Cash Payment	Price/Acre	Rental	Oil	Gas	Other

Legend



13120018



0 3,000 Feet

UNION

BAYOU DE LOUTRE

T22N - R1E

P.O.B.

T22N - R2E

T21N - R2E

T21N - R1E

TRACT 43660 - Union Parish, Louisiana

All of the lands now or formerly constituting the beds and bottoms of all water bodies of every nature and description as to which title is vested in the State of Louisiana, together with all islands arising therein and other lands formed by accretion or by reliction, where allowed by law, excepting tax adjudicated lands, and not presently under mineral lease on December 11, 2013, situated in Union Parish, Louisiana, and more particularly described as follows: Beginning at a point having Coordinates of X = 1,994,473.34 and Y = 787,261.08; thence South 77 degrees 57 minutes 30 seconds East 18,260.81 feet to a point having Coordinates of X = 2,012,332.34 and Y = 783,451.46; thence South 51 degrees 07 minutes 01 seconds West 10,926.83 feet to a point having Coordinates of X = 2,003,826.58 and Y = 776,592.33; thence North 78 degrees 54 minutes 39 seconds West 17,448.52 feet to a point having Coordinates of X = 1,986,703.85 and Y = 779,948.33; thence North 46 degrees 44 minutes 04 seconds East 10,669.64 feet to the point of beginning, **LESS AND EXCEPT** any right, title, and interest in lands owned by and not under lease from the State of Louisiana, on behalf of the Union Parish School Board, situated in Section 16, Township 21 North, Range 1 West, Union Parish, Louisiana and any , contained within the above described tract, containing approximately **103 acres**, all as more particularly outlined on a plat on file in the Office of Mineral Resources, Department of Natural Resources. All bearings, distances and coordinates are based on Louisiana Coordinate System of 1927, (North or South Zone), where applicable.

NOTE: The above description of the Tract nominated for lease has been provided and corrected, where required, exclusively by the nomination party. Any mineral lease selected from this Tract and awarded by the Louisiana State Mineral and Energy Board shall be without warranty of any kind, either express, implied, or statutory, including, but not limited to, the implied warranties of merchantability and fitness for a particular purpose. Should the mineral lease awarded by the Louisiana State Mineral and Energy Board be subsequently modified, cancelled or abrogated due to the existence of conflicting leases, operating agreements, private claims or other future obligations or conditions which may affect all or any portion of the leased Tract, it shall not relieve the Lessee of the obligation to pay any bonus due thereon to the Louisiana State Mineral and Energy Board, nor shall the Louisiana State Mineral and Energy Board be obligated to refund any consideration paid by the Lessor prior to such modification, cancellation, or abrogation, including, but not limited to, bonuses, rentals and royalties.

NOTE: The above Tract is located upon a restricted scenic river and all operations in this area must be conducted in strict conformity with the regulations of the Corps of Engineers, U.S. Army.

Applicant: T.S. DUDLEY LAND COMPANY, INC.

Bidder	Cash Payment	Price/Acre	Rental	Oil	Gas	Other

Legend



13120019



0 3,000 Feet

UNION

T22N - R1W

P.O.B.

T21N - R2W

CORNEY CREEK

TRACT 43661 - Union Parish, Louisiana

All of the lands now or formerly constituting the beds and bottoms of all water bodies of every nature and description as to which title is vested in the State of Louisiana, together with all islands arising therein and other lands formed by accretion or by reliction, where allowed by law, excepting tax adjudicated lands, and not presently under mineral lease on December 11, 2013, situated in Union Parish, Louisiana, and more particularly described as follows: Beginning at a point having Coordinates of X = 2,012,332.34 and Y = 783,451.46; thence South 35 degrees 16 minutes 25 seconds East 15,850.93 feet to a point having Coordinates of X = 2,021,485.96 and Y = 770,510.69; thence South 67 degrees 45 minutes 48 seconds West 5,553.66 feet to a point having Coordinates of X = 2,016,345.34 and Y = 768,409.00; thence South 5,410.46 feet to a point having Coordinates of X = 2,016,345.34 and Y = 762,998.54; thence North 42 degrees 38 minutes 33 seconds West 18,480.00 feet to a point having Coordinates of X = 2,003,826.58 and Y = 776,592.33; thence North 51 degrees 07 minutes 01 seconds East 10,926.83 feet to the point of beginning, **LESS AND EXCEPT** any right, title, and interest in lands owned by and not under lease from the State of Louisiana, on behalf of the Union Parish School Board, situated in Section 16, Township 21 North, Range 1 West, Union Parish, Louisiana, contained within the above described tract, (This lease includes only waterbottoms claimed and owned by the state and specifically excludes any land which the state may claim or own and to which the mineral rights are vested in the state), containing approximately **81 acres**, all as more particularly outlined on a plat on file in the Office of Mineral Resources, Department of Natural Resources. All bearings, distances and coordinates are based on Louisiana Coordinate System of 1927, (North or South Zone), where applicable.

NOTE: The above description of the Tract nominated for lease has been provided and corrected, where required, exclusively by the nomination party. Any mineral lease selected from this Tract and awarded by the Louisiana State Mineral and Energy Board shall be without warranty of any kind, either express, implied, or statutory, including, but not limited to, the implied warranties of merchantability and fitness for a particular purpose. Should the mineral lease awarded by the Louisiana State Mineral and Energy Board be subsequently modified, cancelled or abrogated due to the existence of conflicting leases, operating agreements, private claims or other future obligations or conditions which may affect all or any portion of the leased Tract, it shall not relieve the Lessee of the obligation to pay any bonus due thereon to the Louisiana State Mineral and Energy Board, nor shall the Louisiana State Mineral and Energy Board be obligated to refund any consideration paid by the Lessor prior to such modification, cancellation, or abrogation, including, but not limited to, bonuses, rentals and royalties.

Applicant: T.S. DUDLEY LAND COMPANY, INC.

Bidder	Cash Payment	Price/Acre	Rental	Oil	Gas	Other

Legend
13120020

T21N - R1E

CORNEY CREEK

UNION

P.O.B.

T21N - R1W



TRACT 43662 - Bossier Parish, Louisiana

All of the lands now or formerly constituting the beds and bottoms of all water bodies of every nature and description as to which title is vested in the State of Louisiana, together with all islands arising therein and other lands formed by accretion or by reliction, where allowed by law, excepting tax adjudicated lands, and not presently under mineral lease on December 11, 2013, situated in Bossier Parish, Louisiana, and more particularly described as follows: Beginning at a point being the Northeast corner of State Lease No. 19349, also being the Southeast corner of State Lease No. 20030 having Coordinates of X = 1,645,728.17 and Y = 652,364.67; thence North 5,019.57 feet along the Eastern boundary of said State Lease No. 20030 to a point having Coordinates of X = 1,645,728.17 and Y = 657,384.24; thence South 86 degrees 54 minutes 21 seconds East 5,789.52 feet to a point having Coordinates of X = 1,651,509.25 and Y = 657,071.74; thence South 02 degrees 05 minutes 35 seconds West 5,232.86 feet to a point having Coordinates of X = 1,651,318.12 and Y = 651,842.37; thence South 89 degrees 30 minutes 36 seconds East 5,334.38 feet to a point having Coordinates of X = 1,656,652.31 and Y = 651,796.75; thence South 00 degrees 20 minutes 46 seconds West 5,196.84 feet to a point on the North boundary of State Lease No. 20354, as amended having Coordinates of X = 1,656,620.91 and Y = 646,600.00; thence West 224.22 feet along the North boundary of said State Lease No. 20354 to its Northwest corner having Coordinates of X = 1,656,396.70 and Y = 646,600.00, said point also being the Northeast corner of State Lease No. 20881; thence West 10,668.53 feet along the North boundary of said State Lease No. 20881 to its Northwest corner, having Coordinates of X = 1,645,728.17 and Y = 646,600.00, said point also being on the Eastern boundary of said State Lease No. 19349; thence North 5,764.67 feet along the Eastern boundary of said State Lease No. 19349 to the point of beginning, containing approximately **19 acres**, all as more particularly outlined on a plat on file in the Office of Mineral Resources, Department of Natural Resources. All bearings, distances and coordinates are based on Louisiana Coordinate System of 1927, (North or South Zone), where applicable.

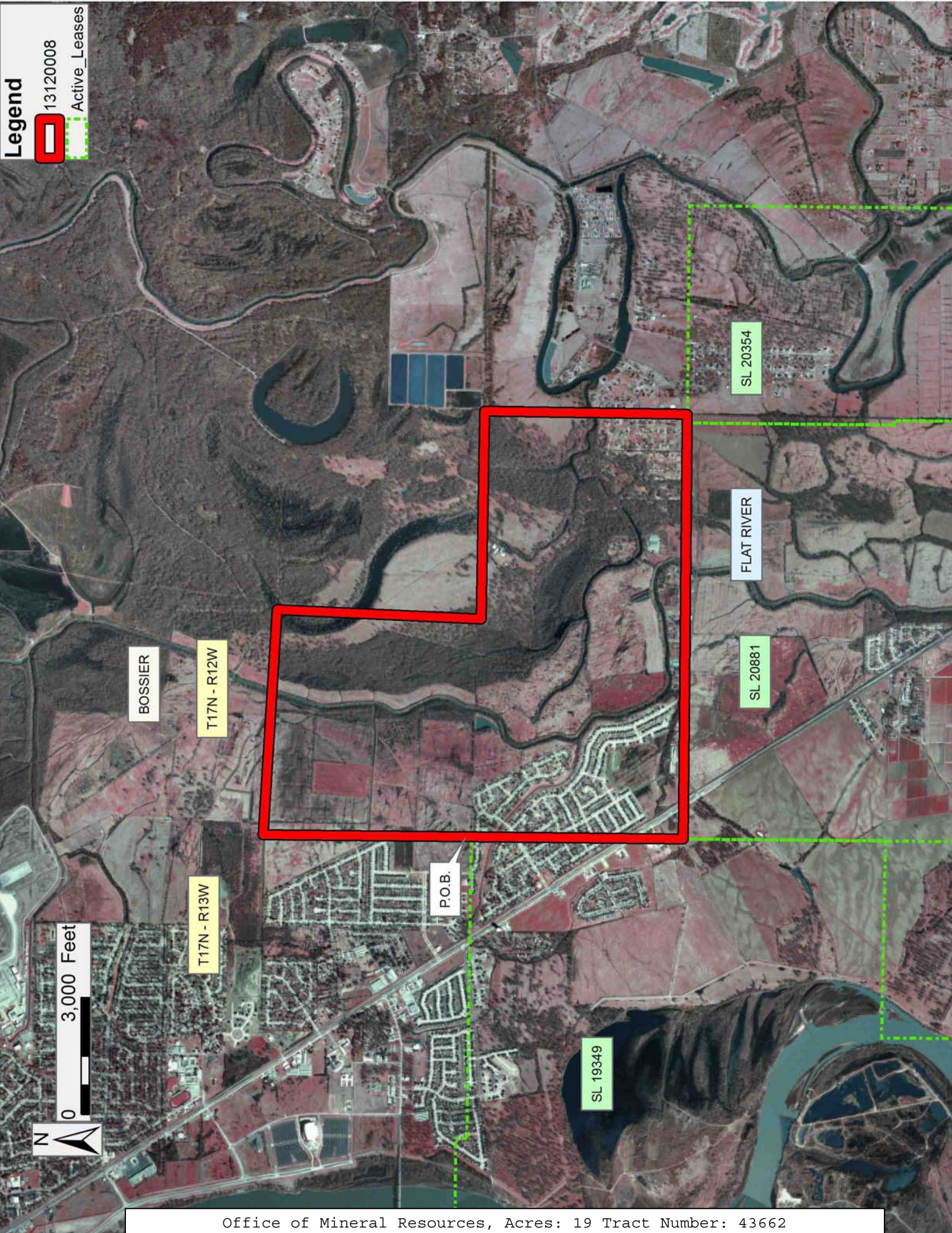
NOTE: The above description of the Tract nominated for lease has been provided and corrected, where required, exclusively by the nomination party. Any mineral lease selected from this Tract and awarded by the Louisiana State Mineral and Energy Board shall be without warranty of any kind, either express, implied, or statutory, including, but not limited to, the implied warranties of merchantability and fitness for a particular purpose. Should the mineral lease awarded by the Louisiana State Mineral and Energy Board be subsequently modified, cancelled or abrogated due to the existence of conflicting leases, operating agreements, private claims or other future obligations or conditions which may affect all or any portion of the leased Tract, it shall not relieve the Lessee of the obligation to pay any bonus due thereon to the Louisiana State Mineral and Energy Board, nor shall the Louisiana State Mineral and Energy Board be obligated to refund any consideration paid by the Lessor prior to such

modification, cancellation, or abrogation, including, but not limited to, bonuses, rentals and royalties.

Applicant: DISCOVERY OIL & GAS PROPERTIES, L.L.C.

Bidder	Cash Payment	Price/Acre	Rental	Oil	Gas	Other

Legend
13120008
Active_Leases



TRACT 43663 - Bossier Parish, Louisiana

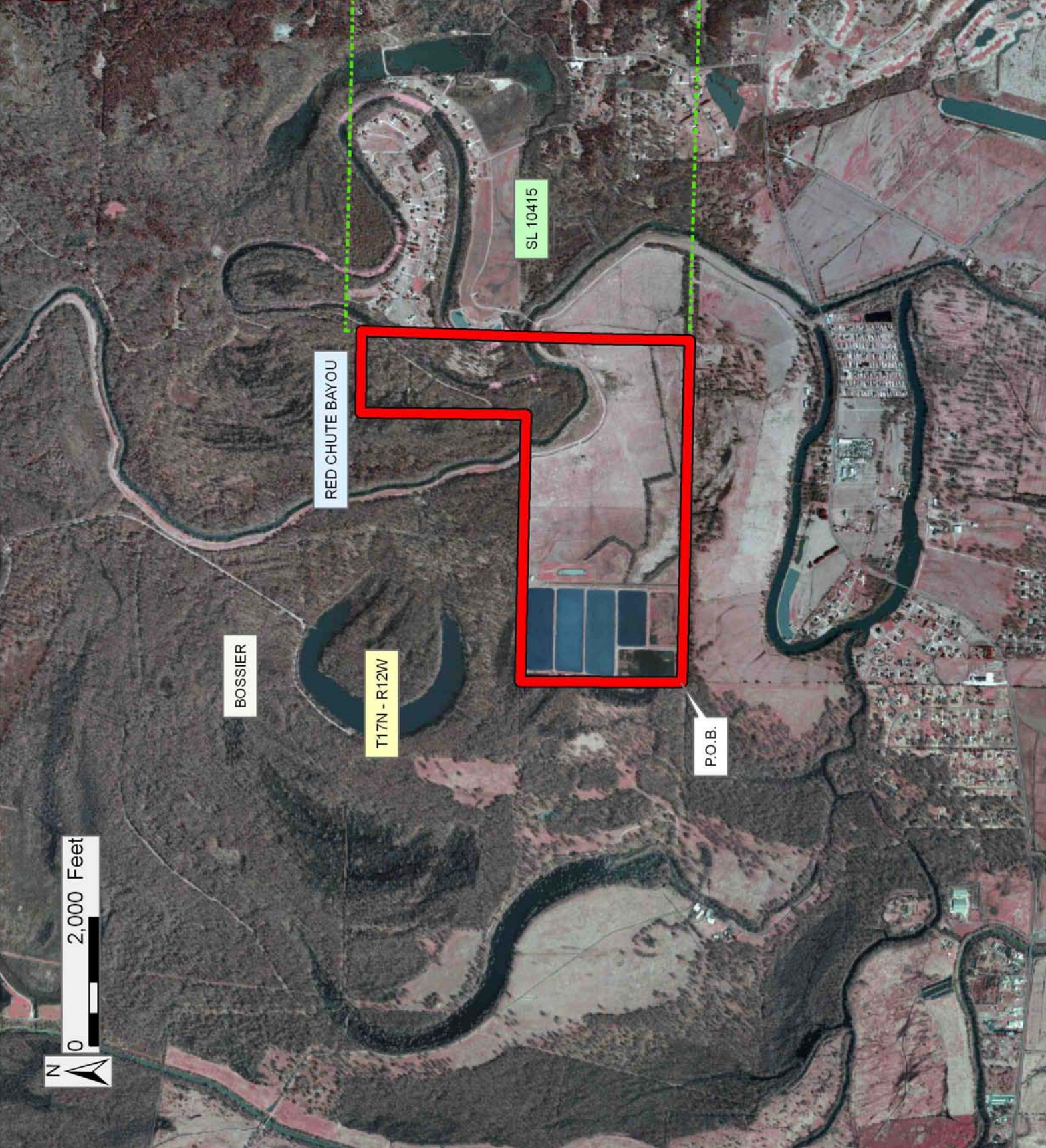
All of the lands now or formerly constituting the beds and bottoms of all water bodies of every nature and description as to which title is vested in the State of Louisiana, together with all islands arising therein and other lands formed by accretion or by reliction, where allowed by law, excepting tax adjudicated lands, and not presently under mineral lease on December 11, 2013, situated in Bossier Parish, Louisiana, and more particularly described as follows: Beginning at a point having Coordinates X = 1,656,652.35 and Y = 651,791.96; thence North 00 degrees 25 minutes 47 seconds West 2,521.39 feet to a point having Coordinates of X = 1,656,633.44 and Y = 654,313.28; thence South 89 degrees 20 minutes 11 seconds East 4,164.69 feet to a point having Coordinates of X = 1,660,797.85 and Y = 654,265.04; thence North 00 degrees 06 minutes 02 seconds East 2,576.62 feet to a point having Coordinates of X = 1,660,802.37 and Y = 656,841.65; thence East approximately 1,271 feet to a point on the West boundary of State Lease No. 10415, as amended; thence Southerly approximately 5,118 feet along the West boundary of said State Lease No. 10415 to its Southwestern corner; thence Westerly approximately 5,324 feet to the point of beginning, **LESS AND EXCEPT** that portion, if any, of State Lease No. 10415, as amended that may lie within the above described tract, and **LESS AND EXCEPT** any right, title, and interest in lands owned by and not under lease from the State of Louisiana, on behalf of the Bossier Parish School Board, situated in Section 16, Township 17 North, Range 12 West, Bossier Parish, Louisiana, contained within the above described tract, containing approximately **14 acres**, all as more particularly outlined on a plat on file in the Office of Mineral Resources, Department of Natural Resources. All bearings, distances and coordinates are based on Louisiana Coordinate System of 1927, (North or South Zone), where applicable.

NOTE: The above description of the Tract nominated for lease has been provided and corrected, where required, exclusively by the nomination party. Any mineral lease selected from this Tract and awarded by the Louisiana State Mineral and Energy Board shall be without warranty of any kind, either express, implied, or statutory, including, but not limited to, the implied warranties of merchantability and fitness for a particular purpose. Should the mineral lease awarded by the Louisiana State Mineral and Energy Board be subsequently modified, cancelled or abrogated due to the existence of conflicting leases, operating agreements, private claims or other future obligations or conditions which may affect all or any portion of the leased Tract, it shall not relieve the Lessee of the obligation to pay any bonus due thereon to the Louisiana State Mineral and Energy Board, nor shall the Louisiana State Mineral and Energy Board be obligated to refund any consideration paid by the Lessor prior to such modification, cancellation, or abrogation, including, but not limited to, bonuses, rentals and royalties.

Applicant: DISCOVERY OIL & GAS PROPERTIES, L.L.C.

Bidder	Cash Payment	Price/Acre	Rental	Oil	Gas	Other

Legend
13120006
Active_Leases



TRACT 43664 - Bossier Parish, Louisiana

All of the lands now or formerly constituting the beds and bottoms of all water bodies of every nature and description as to which title is vested in the State of Louisiana, together with all islands arising therein and other lands formed by accretion or by reliction, where allowed by law, excepting tax adjudicated lands, and not presently under mineral lease on December 11, 2013, situated in Bossier Parish, Louisiana, and more particularly described as follows: Beginning at the Northwest corner of State Lease No. 19756, as amended, having Coordinates of X = 1,661,976.70 and Y = 646,600.00, said point also being the Northeast corner of State Lease No. 20354, as amended; thence West 5,355.79 feet along the North boundary of said State Lease No. 20354 to a point having Coordinates of X = 1,656,620.91 and Y = 646,600.00; thence North 00 degrees 20 minutes 49 seconds East 5,192.06 feet to a point having Coordinates of X = 1,656,652.35 and Y = 651,791.96; thence Easterly approximately 5,325 feet to a point being the Southwest corner of State Lease No. 10415; thence Southerly approximately 5,125 feet to the point of beginning, **LESS AND EXCEPT** that portion, if any, of State Lease No. 10415, that may lie within the above described tract, containing approximately **46 acres**, all as more particularly outlined on a plat on file in the Office of Mineral Resources, Department of Natural Resources. All bearings, distances and coordinates are based on Louisiana Coordinate System of 1927, (North or South Zone), where applicable.

NOTE: The above description of the Tract nominated for lease has been provided and corrected, where required, exclusively by the nomination party. Any mineral lease selected from this Tract and awarded by the Louisiana State Mineral and Energy Board shall be without warranty of any kind, either express, implied, or statutory, including, but not limited to, the implied warranties of merchantability and fitness for a particular purpose. Should the mineral lease awarded by the Louisiana State Mineral and Energy Board be subsequently modified, cancelled or abrogated due to the existence of conflicting leases, operating agreements, private claims or other future obligations or conditions which may affect all or any portion of the leased Tract, it shall not relieve the Lessee of the obligation to pay any bonus due thereon to the Louisiana State Mineral and Energy Board, nor shall the Louisiana State Mineral and Energy Board be obligated to refund any consideration paid by the Lessor prior to such modification, cancellation, or abrogation, including, but not limited to, bonuses, rentals and royalties.

Applicant: DISCOVERY OIL & GAS PROPERTIES, L.L.C.

Bidder	Cash Payment	Price/Acre	Rental	Oil	Gas	Other

Legend



13120007

Active_Leases



SL 10415

RED CHUTE BAYOU

P.O.B.

SL 19756

BOSSIER

T17N - R12W

SL 20354

SL 20881



TRACT 43665 - Avoyelles and Catahoula Parishes, Louisiana

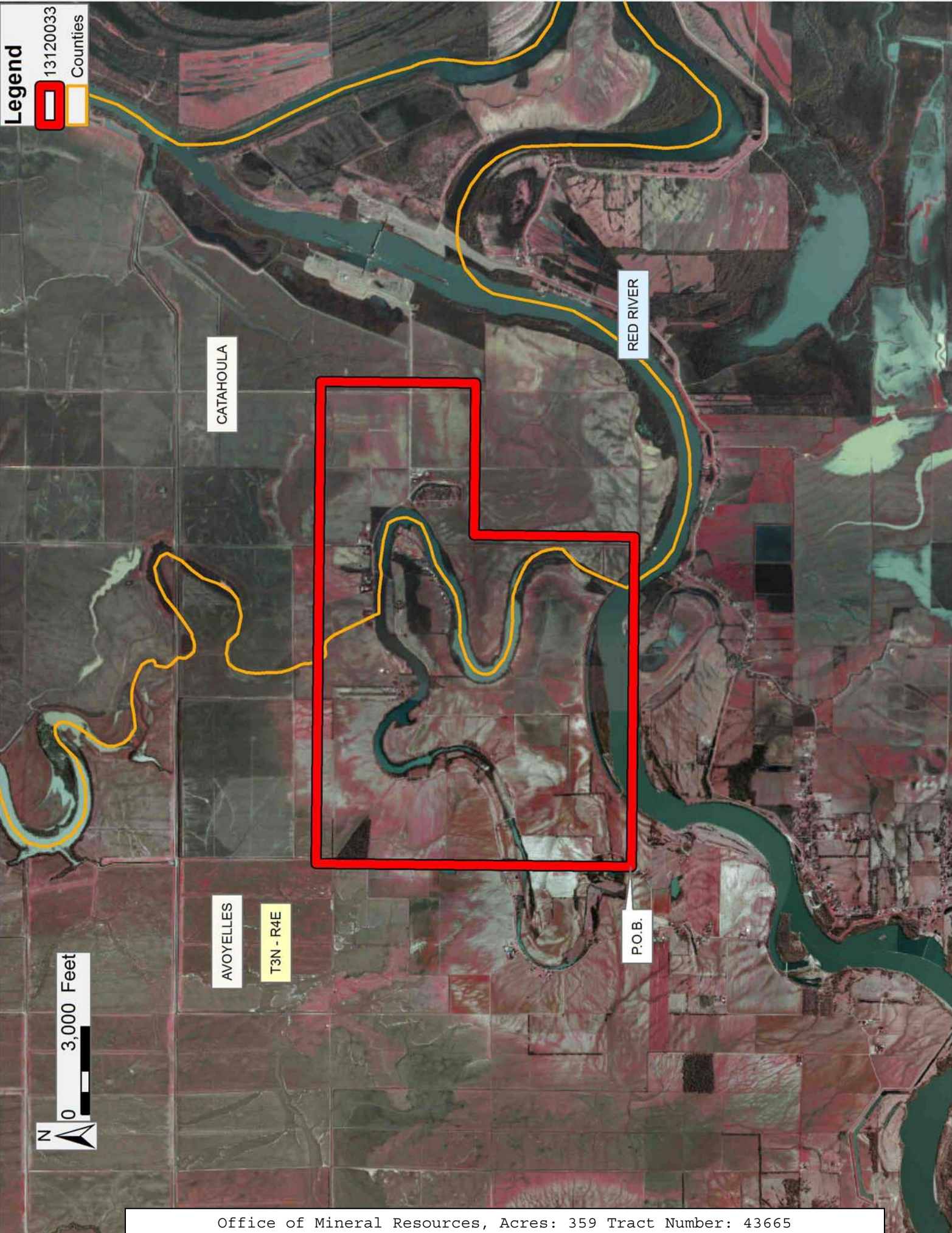
All of the lands now or formerly constituting the beds and bottoms of all water bodies of every nature and description as to which title is vested in the State of Louisiana, together with all islands arising therein and other lands formed by accretion or by reliction, where allowed by law, excepting tax adjudicated lands, and not presently under mineral lease on December 11, 2013, situated in Avoyelles and Catahoula Parishes, Louisiana, and more particularly described as follows: Beginning at a point having Coordinates of X = 2,148,400.00 and Y = 204,800.00; thence North 10,800.00 feet to a point having Coordinates of X = 2,148,400.00 and Y = 215,600.00; thence East 16,500.00 feet to a point having Coordinates of X = 2,164,900.00 and Y = 215,600.00; thence South 5,300.00 feet to a point having Coordinates of X = 2,164,900.00 and Y = 210,300.00; thence West 5,200.00 feet to a point having Coordinates of X = 2,159,700.00 and Y = 210,300.00; thence South 5,500.00 feet to a point having Coordinates of X = 2,159,700.00 and Y = 204,800.00; thence West 11,300.00 feet to the point of beginning, containing approximately **359 acres**, all as more particularly outlined on a plat on file in the Office of Mineral Resources, Department of Natural Resources. All bearings, distances and coordinates are based on Louisiana Coordinate System of 1927, (North or South Zone), where applicable.

NOTE: The above description of the Tract nominated for lease has been provided and corrected, where required, exclusively by the nomination party. Any mineral lease selected from this Tract and awarded by the Louisiana State Mineral and Energy Board shall be without warranty of any kind, either express, implied, or statutory, including, but not limited to, the implied warranties of merchantability and fitness for a particular purpose. Should the mineral lease awarded by the Louisiana State Mineral and Energy Board be subsequently modified, cancelled or abrogated due to the existence of conflicting leases, operating agreements, private claims or other future obligations or conditions which may affect all or any portion of the leased Tract, it shall not relieve the Lessee of the obligation to pay any bonus due thereon to the Louisiana State Mineral and Energy Board, nor shall the Louisiana State Mineral and Energy Board be obligated to refund any consideration paid by the Lessor prior to such modification, cancellation, or abrogation, including, but not limited to, bonuses, rentals and royalties.

Applicant: NORTH COURSE OIL & GAS

Bidder	Cash Payment	Price/Acre	Rental	Oil	Gas	Other

Legend
13120033
Counties



TRACT 43666 - Avoyelles and Catahoula Parishes, Louisiana

All of the lands now or formerly constituting the beds and bottoms of all water bodies of every nature and description as to which title is vested in the State of Louisiana, together with all islands arising therein and other lands formed by accretion or by reliction, where allowed by law, excepting tax adjudicated lands, and not presently under mineral lease on December 11, 2013, situated in Avoyelles and Catahoula Parishes, Louisiana, and more particularly described as follows: Beginning at a point having Coordinates of X = 2,175,800.00 and Y = 210,300.00; thence South 7,600.00 feet to a point having Coordinates of X = 2,175,800.00 and Y = 202,700.00; thence West 9,300.00 feet to a point on the East line of State Lease No. 20978 having Coordinates of X = 2,166,500.00 and Y = 202,700.00; thence along the boundary of said State Lease No. 20978 the following courses and distances: North 800.00 feet to a point having Coordinates of X = 2,166,500.00 and Y = 203,500.00 and West 6,800.00 feet to a point having Coordinates of X = 2,159,700.00 and Y = 203,500.00; thence North 6,800.00 feet to a point having Coordinates of X = 2,159,700.00 and Y = 210,300.00; thence East 16,100.00 feet to the point of beginning, **LESS AND EXCEPT** any right, title, and interest in lands owned by and not under lease from the State of Louisiana, on behalf of the Avoyelles Parish School Board and the Catahoula Parish School Board, situated in Section 16, Township 3 North, Range 5 East, Avoyelles Parish, Louisiana and Catahoula Parish, Louisiana, contained within the above described tract, containing approximately **310 acres**, all as more particularly outlined on a plat on file in the Office of Mineral Resources, Department of Natural Resources. All bearings, distances and coordinates are based on Louisiana Coordinate System of 1927, (North or South Zone), where applicable.

NOTE: The above description of the Tract nominated for lease has been provided and corrected, where required, exclusively by the nomination party. Any mineral lease selected from this Tract and awarded by the Louisiana State Mineral and Energy Board shall be without warranty of any kind, either express, implied, or statutory, including, but not limited to, the implied warranties of merchantability and fitness for a particular purpose. Should the mineral lease awarded by the Louisiana State Mineral and Energy Board be subsequently modified, cancelled or abrogated due to the existence of conflicting leases, operating agreements, private claims or other future obligations or conditions which may affect all or any portion of the leased Tract, it shall not relieve the Lessee of the obligation to pay any bonus due thereon to the Louisiana State Mineral and Energy Board, nor shall the Louisiana State Mineral and Energy Board be obligated to refund any consideration paid by the Lessor prior to such modification, cancellation, or abrogation, including, but not limited to, bonuses, rentals and royalties.

Applicant: NORTH COURSE OIL & GAS

Bidder	Cash Payment	Price/Acre	Rental	Oil	Gas	Other

Legend

-  13120031
-  Active_Leases



T3N - R4E

CATAHOULA

P.O.B.



RED RIVER

AVOUELLES

SL 20978

T3N - R5E

TRACT 43667 - Avoyelles Parish, Louisiana

All of the lands now or formerly constituting the beds and bottoms of all water bodies of every nature and description as to which title is vested in the State of Louisiana, together with all islands arising therein and other lands formed by accretion or by reliction, where allowed by law, excepting tax adjudicated lands, and not presently under mineral lease on December 11, 2013, situated in Avoyelles Parish, Louisiana, and more particularly described as follows: Beginning at a point having Coordinates of X = 2,134,700.00 and Y = 206,950.00; thence East 13,700.00 feet to a point having Coordinates of X = 2,148,400.00 and Y = 206,950.00; thence South 8,450.00 feet to a point having Coordinates of X = 2,148,400.00 and Y = 198,500.00; thence West 13,700.00 feet to a point having Coordinates of X = 2,134,700.00 and Y = 198,500.00; thence North 8,450.00 feet to the point of beginning, **LESS AND EXCEPT** any right, title, and interest in lands owned by and not under lease from the State of Louisiana, on behalf of the Avoyelles Parish School Board, situated in Section 16, Township 03 North, Range 04 East, Avoyelles Parish, Louisiana, contained within the above described tract, containing approximately **31 acres**, all as more particularly outlined on a plat on file in the Office of Mineral Resources, Department of Natural Resources. All bearings, distances and coordinates are based on Louisiana Coordinate System of 1927, (North or South Zone), where applicable.

NOTE: The above description of the Tract nominated for lease has been provided and corrected, where required, exclusively by the nomination party. Any mineral lease selected from this Tract and awarded by the Louisiana State Mineral and Energy Board shall be without warranty of any kind, either express, implied, or statutory, including, but not limited to, the implied warranties of merchantability and fitness for a particular purpose. Should the mineral lease awarded by the Louisiana State Mineral and Energy Board be subsequently modified, cancelled or abrogated due to the existence of conflicting leases, operating agreements, private claims or other future obligations or conditions which may affect all or any portion of the leased Tract, it shall not relieve the Lessee of the obligation to pay any bonus due thereon to the Louisiana State Mineral and Energy Board, nor shall the Louisiana State Mineral and Energy Board be obligated to refund any consideration paid by the Lessor prior to such modification, cancellation, or abrogation, including, but not limited to, bonuses, rentals and royalties.

Applicant: NORTH COURSE OIL & GAS

Bidder	Cash Payment	Price/Acre	Rental	Oil	Gas	Other



0 3,000 Feet

Legend
13120024

AVOYELLES

T3N - R4E

P.O.B.

RED RIVER



TRACT 43668 - Avoyelles and Concordia Parishes, Louisiana

All of the lands now or formerly constituting the beds and bottoms of all water bodies of every nature and description as to which title is vested in the State of Louisiana, together with all islands arising therein and other lands formed by accretion or by reliction, where allowed by law, excepting tax adjudicated lands, and not presently under mineral lease on December 11, 2013, situated in Avoyelles and Concordia Parishes, Louisiana, and more particularly described as follows: Beginning at a point having Coordinates of X = 2,228,150.00 and Y = 193,800.00; thence West 16,250.00 feet to a point having Coordinates of X = 2,211,900.00 and Y = 193,800.00; thence North 11,400.00 feet to a point having Coordinates of X = 2,211,900.00 and Y = 205,200.00; thence East 16,250.00 feet to a point having Coordinates of X = 2,228,150.00 and Y = 205,200.00; thence South 11,400.00 feet to the point of beginning, **LESS AND EXCEPT** any portion of Operating Agreement 255 and Red River Wildlife Management Area that may lie within the above described tract, containing approximately **142 acres**, all as more particularly outlined on a plat on file in the Office of Mineral Resources, Department of Natural Resources. All bearings, distances and coordinates are based on Louisiana Coordinate System of 1927, (North or South Zone), where applicable.

NOTE: The above description of the Tract nominated for lease has been provided and corrected, where required, exclusively by the nomination party. Any mineral lease selected from this Tract and awarded by the Louisiana State Mineral and Energy Board shall be without warranty of any kind, either express, implied, or statutory, including, but not limited to, the implied warranties of merchantability and fitness for a particular purpose. Should the mineral lease awarded by the Louisiana State Mineral and Energy Board be subsequently modified, cancelled or abrogated due to the existence of conflicting leases, operating agreements, private claims or other future obligations or conditions which may affect all or any portion of the leased Tract, it shall not relieve the Lessee of the obligation to pay any bonus due thereon to the Louisiana State Mineral and Energy Board, nor shall the Louisiana State Mineral and Energy Board be obligated to refund any consideration paid by the Lessor prior to such modification, cancellation, or abrogation, including, but not limited to, bonuses, rentals and royalties.

Bidder	Cash Payment	Price/Acre	Rental	Oil	Gas	Other

Applicant: NORTH COURSE OIL & GAS

Legend

- 13120026
- Wildlife
- Active_Leases
- Counties

