

TRACT 43669 - Avoyelles and Concordia Parishes, Louisiana

All of the lands now or formerly constituting the beds and bottoms of all water bodies of every nature and description as to which title is vested in the State of Louisiana, together with all islands arising therein and other lands formed by accretion or by reliction, where allowed by law, excepting tax adjudicated lands, and not presently under mineral lease on December 11, 2013, situated in Avoyelles and Concordia Parishes, Louisiana, and more particularly described as follows: Beginning at a point having Coordinates of X = 2,228,150.00 and Y = 193,800.00; thence North 11,400.00 feet to a point having Coordinates of X = 2,228,150.00 and Y = 205,200.00; thence East 16,250.00 feet to a point having Coordinates of X = 2,244,400.00 and Y = 205,200.00; thence South 7,716 feet to a point on the Northern boundary of State Lease No. 12938, as amended; thence along the boundary of said State Lease No. 12938, as amended, the following courses: Westerly, Northwesterly, Westerly, Southerly, Easterly, Northwesterly, Southeasterly, and Northeasterly to a point of intersection with an North South line having a Coordinate of X = 2,244,400.00; thence South approximately 1,885 feet to a point having Coordinates of X = 2,244,400.00 and Y = 193,800.00; thence West 16,250.00 feet to the Point of Beginning, **LESS AND EXCEPT** any portion of State Lease No. 12938, as amend, and Red River Wildlife Management Area that may lie within the above described tract, containing approximately **382 acres**, all as more particularly outlined on a plat on file in the Office of Mineral Resources, Department of Natural Resources. All bearings, distances and coordinates are based on Louisiana Coordinate System of 1927, (North or South Zone), where applicable.

NOTE: The above description of the Tract nominated for lease has been provided and corrected, where required, exclusively by the nomination party. Any mineral lease selected from this Tract and awarded by the Louisiana State Mineral and Energy Board shall be without warranty of any kind, either express, implied, or statutory, including, but not limited to, the implied warranties of merchantability and fitness for a particular purpose. Should the mineral lease awarded by the Louisiana State Mineral and Energy Board be subsequently modified, cancelled or abrogated due to the existence of conflicting leases, operating agreements, private claims or other future obligations or conditions which may affect all or any portion of the leased Tract, it shall not relieve the Lessee of the obligation to pay any bonus due thereon to the Louisiana State Mineral and Energy Board, nor shall the Louisiana State Mineral and Energy Board be obligated to refund any consideration paid by the Lessor prior to such modification, cancellation, or abrogation, including, but not limited to, bonuses, rentals and royalties.

Applicant: NORTH COURSE OIL & GAS

Bidder	Cash Payment	Price/Acre	Rental	Oil	Gas	Other

Legend

- 13120025
- Wildlife
- Active_Leases

RED RIVER WMA

CONCORDIA PARISH

T3N - R7E

CATFISH BAYOU

RED RIVER

SL 12938

0 3,000 Feet



P.O.B.

AVOUELLES PARISH

T3N - R7E

TRACT 43670 - Avoyelles and Catahoula Parishes, Louisiana

All of the lands now or formerly constituting the beds and bottoms of all water bodies of every nature and description as to which title is vested in the State of Louisiana, together with all islands arising therein and other lands formed by accretion or by reliction, where allowed by law, excepting tax adjudicated lands, and not presently under mineral lease on December 11, 2013, situated in Avoyelles and Catahoula Parishes, Louisiana, and more particularly described as follows: Beginning at a point having Coordinates of X = 2,148,400.00 and Y = 204,800.00; thence East 11,300.00 feet to a point having Coordinates of X = 2,159,700.00 and Y = 204,800.00; thence South 1,300.00 feet to a point on the North line of State Lease No. 20978 having Coordinates of X = 2,159,700.00 and Y = 203,500.00; thence along the boundary of said State Lease No. 20978 the following: West 3,800.00 feet to a point having Coordinates of X = 2,155,900.00 and Y = 203,500.00, and South 12,600.00 feet to a point having Coordinates of X = 2,155,900.00 and Y = 190,900.00; thence West 3,200.00 feet to a point having Coordinates of X = 2,152,700.00 and Y = 190,900.00; thence North 7,600.00 feet to a point having Coordinates of X = 2,152,700.00 and Y = 198,500.00; thence West 4,300.00 feet to a point having Coordinates of X = 2,148,400.00 and Y = 198,500.00; thence North 6,300.00 feet to the point of beginning, containing approximately **176 acres**, all as more particularly outlined on a plat on file in the Office of Mineral Resources, Department of Natural Resources. All bearings, distances and coordinates are based on Louisiana Coordinate System of 1927, (North or South Zone), where applicable.

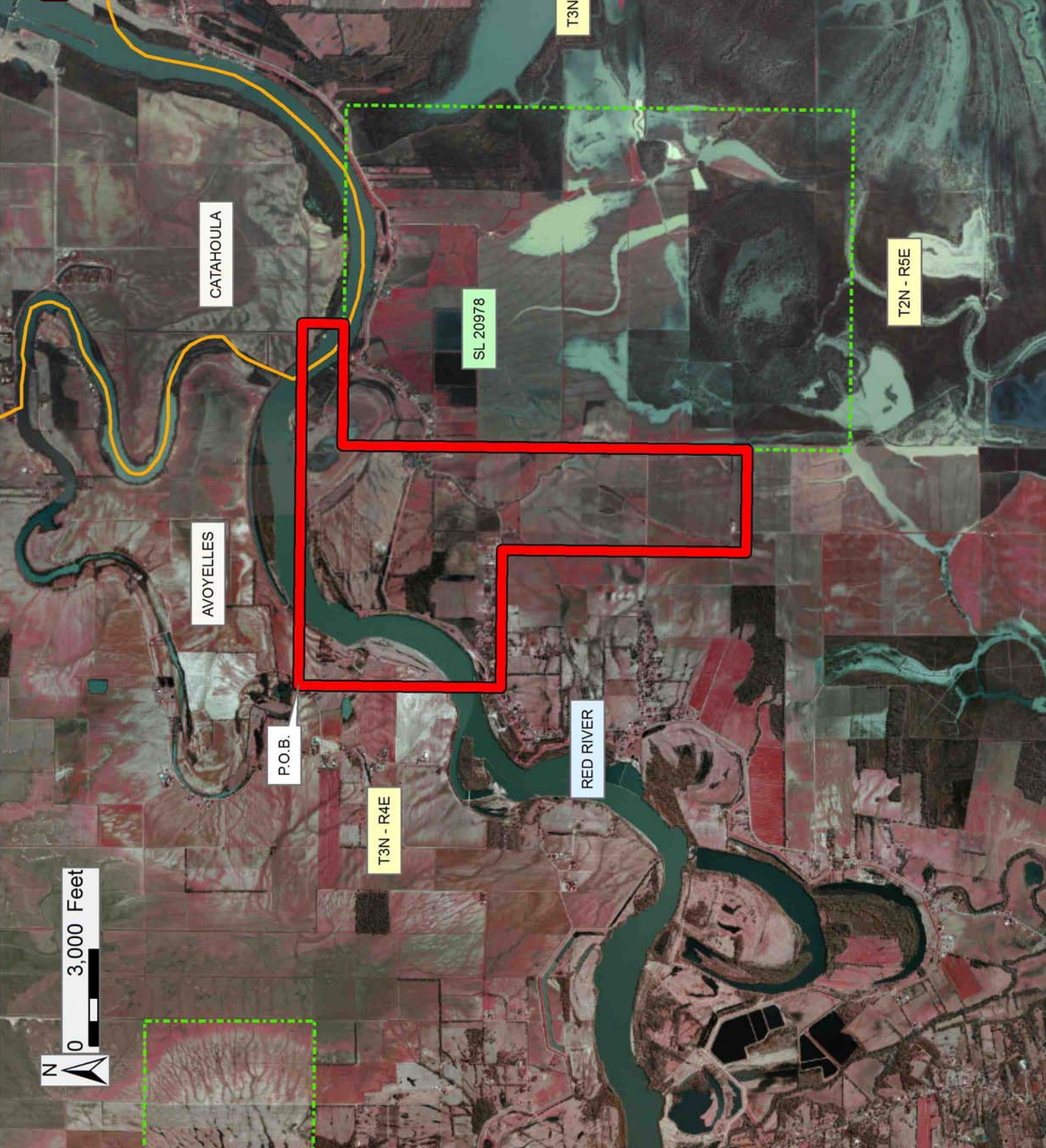
NOTE: The above description of the Tract nominated for lease has been provided and corrected, where required, exclusively by the nomination party. Any mineral lease selected from this Tract and awarded by the Louisiana State Mineral and Energy Board shall be without warranty of any kind, either express, implied, or statutory, including, but not limited to, the implied warranties of merchantability and fitness for a particular purpose. Should the mineral lease awarded by the Louisiana State Mineral and Energy Board be subsequently modified, cancelled or abrogated due to the existence of conflicting leases, operating agreements, private claims or other future obligations or conditions which may affect all or any portion of the leased Tract, it shall not relieve the Lessee of the obligation to pay any bonus due thereon to the Louisiana State Mineral and Energy Board, nor shall the Louisiana State Mineral and Energy Board be obligated to refund any consideration paid by the Lessor prior to such modification, cancellation, or abrogation, including, but not limited to, bonuses, rentals and royalties.

Applicant: NORTH COURSE OIL & GAS

Bidder	Cash Payment	Price/Acre	Rental	Oil	Gas	Other

Legend

- 13120029
- Active_Leases
- Counties



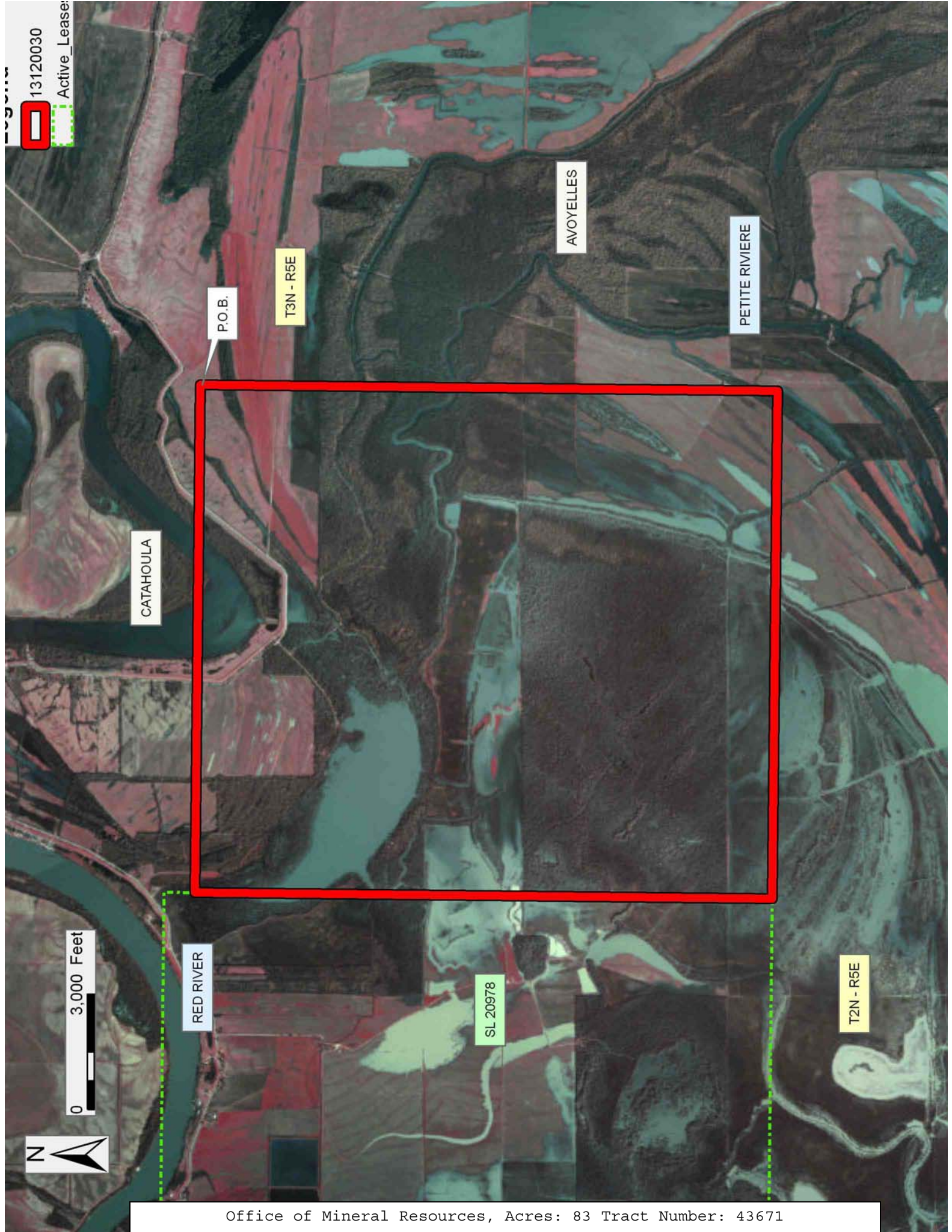
TRACT 43671 - Avoyelles and Catahoula Parishes, Louisiana

All of the lands now or formerly constituting the beds and bottoms of all water bodies of every nature and description as to which title is vested in the State of Louisiana, together with all islands arising therein and other lands formed by accretion or by reliction, where allowed by law, excepting tax adjudicated lands, and not presently under mineral lease on December 11, 2013, situated in Avoyelles and Catahoula Parishes, Louisiana, and more particularly described as follows: Beginning at a point having Coordinates of X = 2,179,700.00 and Y = 202,700.00; thence South 15,000.00 feet to a point having Coordinates of X = 2,179,700.00 and Y = 187,700.00; thence West 13,200.00 feet to the Southeast corner of State Lease No. 20978 having Coordinates of X = 2,166,500.00 and Y = 187,700.00; thence North 15,000.00 feet along the East line of said State Lease No. 20978 to a point having Coordinates of X = 2,166,500.00 and Y = 202,700.00; thence East 13,200.00 feet to the point of beginning, containing approximately **83 acres**, all as more particularly outlined on a plat on file in the Office of Mineral Resources, Department of Natural Resources. All bearings, distances and coordinates are based on Louisiana Coordinate System of 1927, (North or South Zone), where applicable.

NOTE: The above description of the Tract nominated for lease has been provided and corrected, where required, exclusively by the nomination party. Any mineral lease selected from this Tract and awarded by the Louisiana State Mineral and Energy Board shall be without warranty of any kind, either express, implied, or statutory, including, but not limited to, the implied warranties of merchantability and fitness for a particular purpose. Should the mineral lease awarded by the Louisiana State Mineral and Energy Board be subsequently modified, cancelled or abrogated due to the existence of conflicting leases, operating agreements, private claims or other future obligations or conditions which may affect all or any portion of the leased Tract, it shall not relieve the Lessee of the obligation to pay any bonus due thereon to the Louisiana State Mineral and Energy Board, nor shall the Louisiana State Mineral and Energy Board be obligated to refund any consideration paid by the Lessor prior to such modification, cancellation, or abrogation, including, but not limited to, bonuses, rentals and royalties.

Bidder	Cash Payment	Price/Acre	Rental	Oil	Gas	Other

Applicant: NORTH COURSE OIL & GAS



13120030
Active Lease:



0 3,000 Feet



TRACT 43672 - St. Landry Parish, Louisiana

All of the lands now or formerly constituting the beds and bottoms of all water bodies of every nature and description as to which title is vested in the State of Louisiana, together with all islands arising therein and other lands formed by accretion or by reliction, where allowed by law, excepting tax adjudicated lands, and not presently under mineral lease on December 11, 2013, situated in St. Landry Parish, Louisiana, and more particularly described as follows: Beginning at a point having Coordinates of X = 1,781,587.03 and Y = 717,063.73; thence East 16,683.91 feet to a point having Coordinates of X = 1,798,270.94 and Y = 717,063.73; thence South 01 degrees 05 minutes 24 seconds East 18,473.34 feet to a point having Coordinates of X = 1,798,622.35 and Y = 698,593.73; thence West 17,035.32 feet to a point having Coordinates of X = 1,781,587.03 and Y = 698,593.73; thence North 18,470.00 feet to the point of beginning, **LESS AND EXCEPT** any portion of the Thistlethwaite Wildlife Management Area which lies within the above described tract, containing approximately **85 acres**, all as more particularly outlined on a plat on file in the Office of Mineral Resources, Department of Natural Resources. All bearings, distances and coordinates are based on Louisiana Coordinate System of 1927, (North or South Zone), where applicable.

NOTE: The above description of the Tract nominated for lease has been provided and corrected, where required, exclusively by the nomination party. Any mineral lease selected from this Tract and awarded by the Louisiana State Mineral and Energy Board shall be without warranty of any kind, either express, implied, or statutory, including, but not limited to, the implied warranties of merchantability and fitness for a particular purpose. Should the mineral lease awarded by the Louisiana State Mineral and Energy Board be subsequently modified, cancelled or abrogated due to the existence of conflicting leases, operating agreements, private claims or other future obligations or conditions which may affect all or any portion of the leased Tract, it shall not relieve the Lessee of the obligation to pay any bonus due thereon to the Louisiana State Mineral and Energy Board, nor shall the Louisiana State Mineral and Energy Board be obligated to refund any consideration paid by the Lessor prior to such modification, cancellation, or abrogation, including, but not limited to, bonuses, rentals and royalties.

Bidder	Cash Payment	Price/Acre	Rental	Oil	Gas	Other

Applicant: LESLIE M. COOPER

Legend

- 13120023
- Wildlife

ST LANDRY

T5S - R5E

THISTLETHWAITE WMA

P.O.B.

BAYOU COURTABLEU



TRACT 43673 - Allen Parish, Louisiana

All of the lands now or formerly constituting the beds and bottoms of all water bodies of every nature and description as to which title is vested in the State of Louisiana, together with all islands arising therein and other lands formed by accretion or by reliction, where allowed by law, excepting tax adjudicated lands, and not presently under mineral lease on December 11, 2013, situated in Allen Parish, Louisiana, and more particularly described as follows: Beginning at the Southernmost Southwest corner of State Lease No. 20622 having Coordinates of X = 1,495,526.00 and Y = 696,170.00; thence along the boundary of said State Lease No. 20622 the following courses and distances: East 3,046.00 feet and North 894.00 feet to a point having Coordinates of X = 1,498,572.00 and Y = 697,064.00; thence East 2,506.00 feet to a point having Coordinates of X = 1,501,078.00 and Y = 697,064.00; thence South 2,004.00 feet to a point on the boundary of State Lease No. 20672 having Coordinates of X = 1,501,078.00 and Y = 695,060.00; thence West 3,278.00 feet to along the boundary of said State Lease No. 20672 to its Northwest corner having Coordinates of X = 1,497,800.00 and Y = 695,060.00; thence West 2,274.00 feet to a point having Coordinates of X = 1,495,526.00 and Y = 695,060.00; thence North 1,110.00 feet to the point of beginning, containing approximately **4 acres**, all as more particularly outlined on a plat on file in the Office of Mineral Resources, Department of Natural Resources. All bearings, distances and coordinates are based on Louisiana Coordinate System of 1927, (North or South Zone), where applicable.

NOTE: The above description of the Tract nominated for lease has been provided and corrected, where required, exclusively by the nomination party. Any mineral lease selected from this Tract and awarded by the Louisiana State Mineral and Energy Board shall be without warranty of any kind, either express, implied, or statutory, including, but not limited to, the implied warranties of merchantability and fitness for a particular purpose. Should the mineral lease awarded by the Louisiana State Mineral and Energy Board be subsequently modified, cancelled or abrogated due to the existence of conflicting leases, operating agreements, private claims or other future obligations or conditions which may affect all or any portion of the leased Tract, it shall not relieve the Lessee of the obligation to pay any bonus due thereon to the Louisiana State Mineral and Energy Board, nor shall the Louisiana State Mineral and Energy Board be obligated to refund any consideration paid by the Lessor prior to such modification, cancellation, or abrogation, including, but not limited to, bonuses, rentals and royalties.

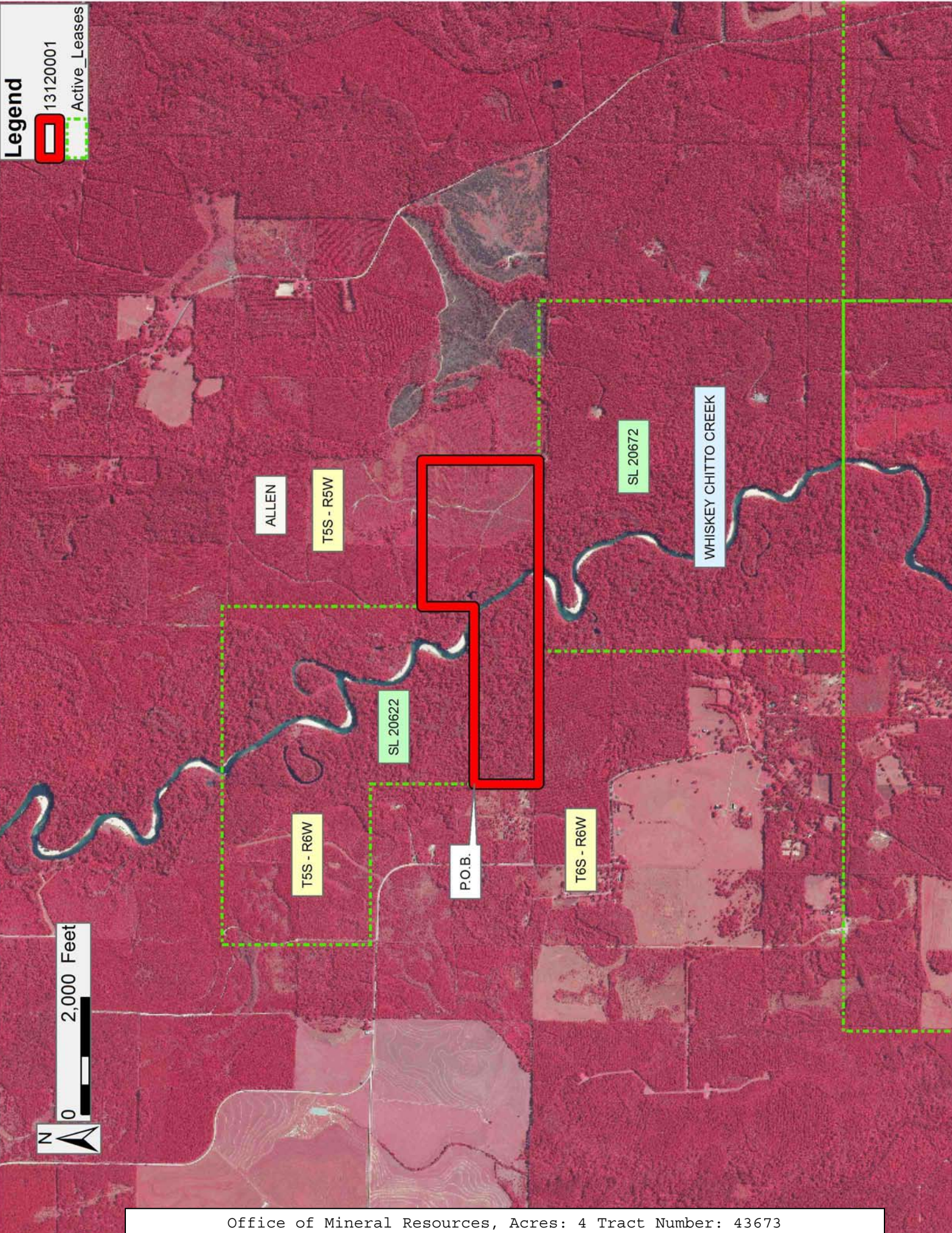
NOTE: The Office of Mineral Resources will require a minimum bonus of \$250 per acre and a minimum royalty of 22.5%.

NOTE: The above Tract is located upon a restricted scenic river and all operations in this area must be conducted in strict conformity with the regulations of the Corps of Engineers, U.S. Army.

Applicant: STAFF OFFICE OF MINERAL RESOURCES

Bidder	Cash Payment	Price/Acre	Rental	Oil	Gas	Other

Legend
13120001
Active_Leases



TRACT 43674 - Lafourche Parish, Louisiana

All of the lands now or formerly constituting the beds and bottoms of all water bodies of every nature and description as to which title is vested in the State of Louisiana, together with all islands arising therein and other lands formed by accretion or by reliction, where allowed by law, excepting tax adjudicated lands, and not presently under mineral lease on December 11, 2013, situated in Lafourche Parish, Louisiana, and more particularly described as follows: Beginning at a point having Coordinates of X = 2,252,548.00 and Y = 346,271.73; thence North 71 degrees 53 minutes 17 seconds East 8,907.97 feet to a point having Coordinates of X = 2,261,014.59 and Y = 349,041.00; thence East 6,226.20 feet to a point having Coordinates of X = 2,267,240.79 and Y = 349,041.00; thence South approximately 3,171 feet to the Northwest corner of State Lease No. 1730, as amended; thence along the boundary of said State Lease No. 1730, as amended, the following courses: South 48 degrees 00 minutes 00 seconds West 434.33 feet to a point; South 36 degrees 33 minutes 05 seconds West 970.22 feet to a point; South 29 degrees 11 minutes 25 seconds West 410.08 feet to a point; South 27 degrees 30 minutes 43 seconds West 216.48 feet to a point; South 21 degrees 43 minutes 22 seconds West 540.37 feet to a point; South 19 degrees 51 minutes 56 seconds West 582.67 feet to a point; South 17 degrees 11 minutes 55 seconds West 615.52 feet to a point; South 15 degrees 48 minutes 09 seconds West 220.33 feet to a point; South 12 degrees 15 minutes 53 seconds West 188.30 feet to a point; South 07 degrees 54 minutes 26 seconds West 218.07 feet to a point; South 03 degrees 34 minutes 35 seconds West 160.31 feet to a point; and South 07 degrees 58 minutes 11 seconds East 143.31 feet to a point; thence South 44 degrees 24 minutes 40 seconds West approximately 10,237 feet to a point having Coordinates of X = 2,258,176.00 and Y = 334,385.00; thence West 5,628.00 feet to a point having Coordinates of X = 2,252,548.00 and Y = 334,385.00; thence North 11,886.73 feet to the point of beginning, containing approximately **87 acres**, all as more particularly outlined on a plat on file in the Office of Mineral Resources, Department of Natural Resources. All bearings, distances and coordinates are based on Louisiana Coordinate System of 1927, (North or South Zone), where applicable.

NOTE: The above description of the Tract nominated for lease has been provided and corrected, where required, exclusively by the nomination party. Any mineral lease selected from this Tract and awarded by the Louisiana State Mineral and Energy Board shall be without warranty of any kind, either express, implied, or statutory, including, but not limited to, the implied warranties of merchantability and fitness for a particular purpose. Should the mineral lease awarded by the Louisiana State Mineral and Energy Board be subsequently modified, cancelled or abrogated due to the existence of conflicting leases, operating agreements, private claims or other future obligations or conditions which may affect all or any portion of the leased Tract, it shall not relieve the Lessee of the obligation to pay any bonus due thereon to the Louisiana State Mineral and Energy Board, nor shall the Louisiana State Mineral and Energy Board be obligated to refund any consideration paid by the Lessor prior to such

modification, cancellation, or abrogation, including, but not limited to, bonuses, rentals and royalties.

NOTE: The State of Louisiana does hereby reserve, and this lease shall be subject to, the imprescriptible right of surface use in the nature of a servitude in favor of the Department of Natural Resources, including its Offices and Commissions, for the sole purpose of implementing, constructing, servicing and maintaining approved coastal zone management and/or restoration projects. Utilization of any and all rights derived under this lease by the mineral lessee, its agents, successors or assigns, shall not interfere with nor hinder the reasonable surface use by the Department of Natural Resources, its Offices or Commissions, as herein above reserved.

Applicant: UEBER DEVELOPMENT

Bidder	Cash Payment	Price/Acre	Rental	Oil	Gas	Other

Legend

13120003

Active_Leases



TRACT 43675 - Lafourche Parish, Louisiana

All of the lands now or formerly constituting the beds and bottoms of all water bodies of every nature and description as to which title is vested in the State of Louisiana, together with all islands arising therein and other lands formed by accretion or by reliction, where allowed by law, excepting tax adjudicated lands, and not presently under mineral lease on December 11, 2013, situated in Lafourche Parish, Louisiana, and more particularly described as follows: Beginning at a the Northeast corner of State Lease No. 21098 having Coordinates of X = 2,280,029.79 and Y = 342,661.85; thence East 12,105.21 feet to a point having Coordinates of X = 2,292,135.00 and Y = 342,661.85; thence South 11,052.02 feet to a point having Coordinates of X = 2,292,135.00 and Y = 331,609.83; thence West 12,105.21 feet to the Southeast corner of said State Lease No. 21098 having Coordinates of X = 2,280,029.79 and Y = 331,609.83; thence North 11,052.02 feet along the East line of said State Lease No. 21098 to the point of beginning, containing approximately **71 acres**, all as more particularly outlined on a plat on file in the Office of Mineral Resources, Department of Natural Resources. All bearings, distances and coordinates are based on Louisiana Coordinate System of 1927, (North or South Zone), where applicable.

NOTE: The above description of the Tract nominated for lease has been provided and corrected, where required, exclusively by the nomination party. Any mineral lease selected from this Tract and awarded by the Louisiana State Mineral and Energy Board shall be without warranty of any kind, either express, implied, or statutory, including, but not limited to, the implied warranties of merchantability and fitness for a particular purpose. Should the mineral lease awarded by the Louisiana State Mineral and Energy Board be subsequently modified, cancelled or abrogated due to the existence of conflicting leases, operating agreements, private claims or other future obligations or conditions which may affect all or any portion of the leased Tract, it shall not relieve the Lessee of the obligation to pay any bonus due thereon to the Louisiana State Mineral and Energy Board, nor shall the Louisiana State Mineral and Energy Board be obligated to refund any consideration paid by the Lessor prior to such modification, cancellation, or abrogation, including, but not limited to, bonuses, rentals and royalties.

NOTE: The State of Louisiana does hereby reserve, and this lease shall be subject to, the imprescriptible right of surface use in the nature of a servitude in favor of the Department of Natural Resources, including its Offices and Commissions, for the sole purpose of implementing, constructing, servicing and maintaining approved coastal zone management and/or restoration projects. Utilization of any and all rights derived under this lease by the mineral lessee, its agents, successors or assigns, shall not interfere with nor hinder the reasonable surface use by the Department of Natural Resources, its Offices or Commissions, as herein above reserved.

Applicant: UEER DEVELOPMENT

Bidder	Cash Payment	Price/Acre	Rental	Oil	Gas	Other

Legend
13120005
Active_Leases

LAFOURCHE

T17S - R20E

BAYOU LAFOURCHE



P.O.B.

SL 21098

0 3,000 Feet

TRACT 43676 - Lafourche Parish, Louisiana

All of the lands and lands now or formerly constituting the beds and bottoms of all water bodies of every nature and description as to which title is vested in the State of Louisiana, together with all islands arising therein and other lands formed by accretion or by reliction, where allowed by law, excepting tax adjudicated lands, and not presently under mineral lease on December 11, 2013, situated in Lafourche Parish, Louisiana, and more particularly described as follows: Beginning at a point having Coordinates of X = 2,258,176.00 and Y = 326,965.00; thence North 7,420.00 feet to a point having Coordinates of X = 2,258,176.00 and Y = 334,385.00; thence North 44 degrees 24 minutes 40 seconds East approximately 10,237 feet to a point on the Southern boundary of State Lease No. 1730, as amended; thence along the boundary of said State Lease No. 1730, as amend, the following courses: South 42 degrees 01 minutes 08 seconds East 462.25 feet to a point; South 43 degrees 52 minutes 49 seconds East 154.71 feet to a point; South 51 degrees 20 minutes 55 seconds East 179.64 feet to a point; South 51 degrees 13 minutes 20 seconds East 493.50 feet to a point; South 47 degrees 04 minutes 40 seconds East 911.67 feet to a point; South 45 degrees 18 minutes 04 seconds East 759.94 feet to a point; and South 44 degrees 49 minutes 16 seconds East 1,811.38 feet to a point on the Western boundary of State Lease No. 21098; thence Southerly approximately 6,771 feet along the Western boundary of said State Lease No. 21098 to its Southwest corner having Coordinates of X = 2,268,766.36 and Y = 331,609.83; thence South 4,644.83 feet to a point having Coordinates of X = 2,268,766.36 and Y = 326,965.00; thence West 10,590.36 feet to the point of beginning, Tract 1 being State owned water bottoms falling in Bayou L'eau Bleu and Lake Long containing approximately 73 acres. Tract 2: That certain tract or parcel of land containing 53.36 acres, more or less, situated in Section 13, Township 17 South Range 19 East, Lafourche, Louisiana, and being described as Lot 2 of Section 13 in that Survey dated September 21, 1857 and is also described in Patent #1140563, dated September 1, 1953, more fully described as being a Division of State Lands Tract No. 3 29 037 containing approximately 53.36 acres, more or less, as shown on the attached plat. Tract 3: That certain tract or parcel of land containing 60.20 acres, more or less, situated in Section 15, Township 17 South Range 19 East, Lafourche, Louisiana, and being described as Lot 2 of Section 15 in that Survey dated September 21, 1857 and is also described in Patent #1140563, dated September 1, 1953, more fully described as being a Division of State Lands Tract No. 3 29 038 containing approximately 60.20 acres, more or less, as shown on the attached plat. Tract 4: That certain tract or parcel of land containing 49.72 acres, more or less, situated in Section 17, Township 17 South Range 19 East, Lafourche, Louisiana, and being described as Lot 2 of Section 17 in that Survey dated September 21, 1857 and is also described in Patent #1140563, dated September 1, 1953, more fully described as being a Division of State Lands Tract No. 3 29 039 containing approximately 53.96 acres, more or less, as shown on the attached plat. Tract 5: That certain tract or parcel of land containing 8.04 acres, more or less, situated in Section 11, Township 17 South Range 19 East,

Lafourche, Louisiana, and being described as Lot 2 of Section 11 in that Survey dated September 21, 1857 and is also described in Patent #1140563, dated September 1, 1953, more fully described as being a Division of State Lands Tract No. 3 29 040 containing approximately 8.04 acres, more or less, as shown on the attached plat, **LESS AND EXCEPT** any right, title, and interest in lands owned by and not under lease from the State of Louisiana, on behalf of the Lafourche Parish School Board, situated in Section 16, Township 17 South, Range 19 East, Lafourche Parish, Louisiana, contained within the above described tract, and containing a total of approximately **244 acres**, all as more particularly outlined on a plat on file in the Office of Mineral Resources, Department of Natural Resources. All bearings, distances and coordinates are based on Louisiana Coordinate System of 1927, (North or South Zone), where applicable.

NOTE: The above description of the Tract nominated for lease has been provided and corrected, where required, exclusively by the nomination party. Any mineral lease selected from this Tract and awarded by the Louisiana State Mineral and Energy Board shall be without warranty of any kind, either express, implied, or statutory, including, but not limited to, the implied warranties of merchantability and fitness for a particular purpose. Should the mineral lease awarded by the Louisiana State Mineral and Energy Board be subsequently modified, cancelled or abrogated due to the existence of conflicting leases, operating agreements, private claims or other future obligations or conditions which may affect all or any portion of the leased Tract, it shall not relieve the Lessee of the obligation to pay any bonus due thereon to the Louisiana State Mineral and Energy Board, nor shall the Louisiana State Mineral and Energy Board be obligated to refund any consideration paid by the Lessor prior to such modification, cancellation, or abrogation, including, but not limited to, bonuses, rentals and royalties.

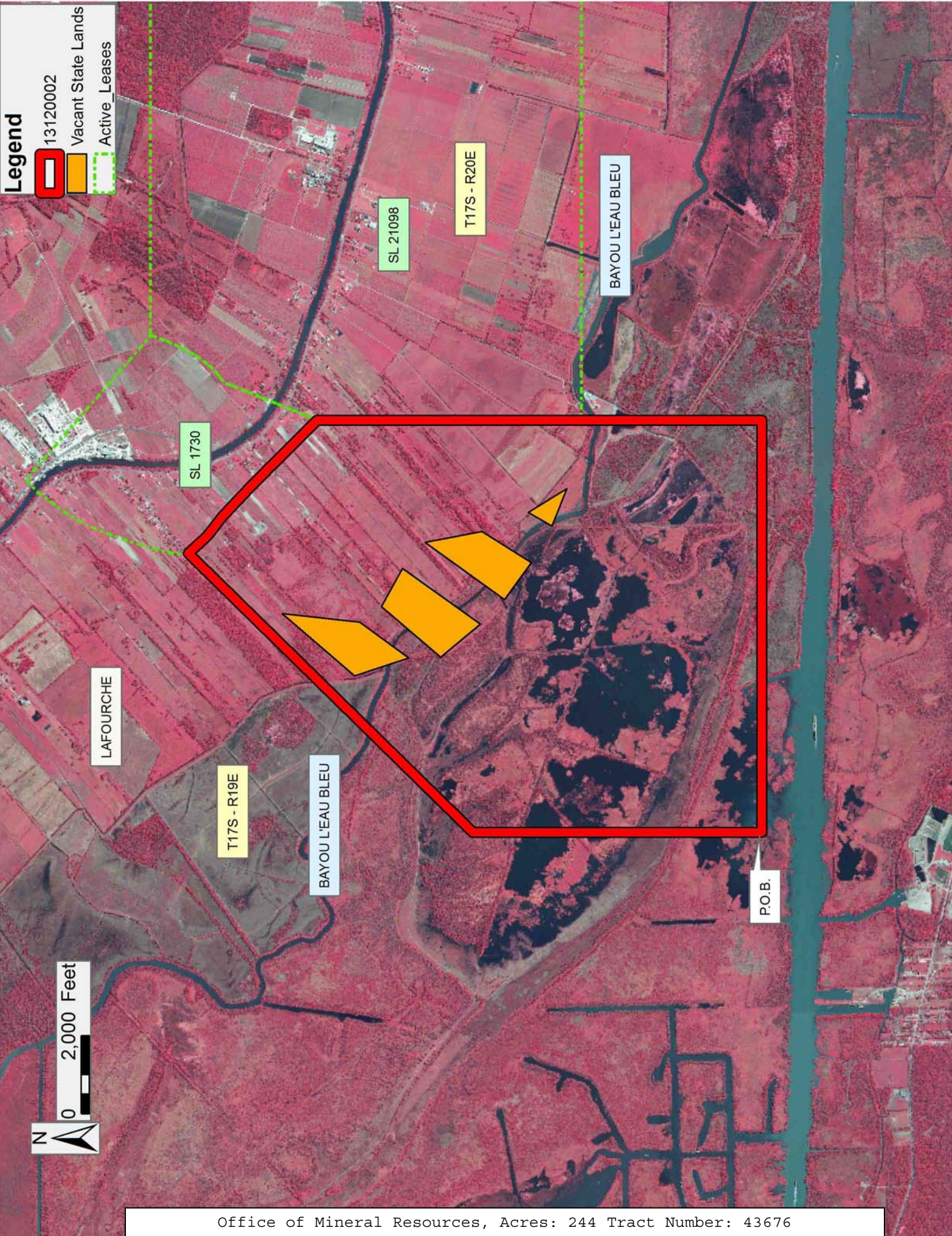
NOTE: The State of Louisiana does hereby reserve, and this lease shall be subject to, the imprescriptible right of surface use in the nature of a servitude in favor of the Department of Natural Resources, including its Offices and Commissions, for the sole purpose of implementing, constructing, servicing and maintaining approved coastal zone management and/or restoration projects. Utilization of any and all rights derived under this lease by the mineral lessee, its agents, successors or assigns, shall not interfere with nor hinder the reasonable surface use by the Department of Natural Resources, its Offices or Commissions, as herein above reserved.

Applicant: UEER DEVELOPMENT

Bidder	Cash Payment	Price/Acre	Rental	Oil	Gas	Other

Legend

- 13120002
- Vacant State Lands
- Active_Leases



TRACT 43677 - Lafourche Parish, Louisiana

All of the lands now or formerly constituting the beds and bottoms of all water bodies of every nature and description as to which title is vested in the State of Louisiana, together with all islands arising therein and other lands formed by accretion or by reliction, where allowed by law, excepting tax adjudicated lands, and not presently under mineral lease on December 11, 2013, situated in Lafourche Parish, Louisiana, and more particularly described as follows: Beginning at a the Southwest corner of State Lease No. 21098 having Coordinates of X = 2,268,766.36 and Y = 331,609.83; thence East 11,263.43 feet along the South line of said State Lease No. 21098 to its Southeast corner having Coordinates of X = 2,280,029.79 and Y = 331,609.83; thence East 1,936.21 feet to a point having Coordinates of X = 2,281,966.00 and Y = 331,609.83; thence South 8,999.83 feet to a point having Coordinates of X = 2,281,966.00 and Y = 322,610.00; thence West 13,199.64 feet to a point having Coordinates of X = 2,268,766.36 and Y = 322,610.00; thence North 8,999.83 feet to the point of beginning, containing approximately **50 acres**, all as more particularly outlined on a plat on file in the Office of Mineral Resources, Department of Natural Resources. All bearings, distances and coordinates are based on Louisiana Coordinate System of 1927, (North or South Zone), where applicable.

NOTE: The above description of the Tract nominated for lease has been provided and corrected, where required, exclusively by the nomination party. Any mineral lease selected from this Tract and awarded by the Louisiana State Mineral and Energy Board shall be without warranty of any kind, either express, implied, or statutory, including, but not limited to, the implied warranties of merchantability and fitness for a particular purpose. Should the mineral lease awarded by the Louisiana State Mineral and Energy Board be subsequently modified, cancelled or abrogated due to the existence of conflicting leases, operating agreements, private claims or other future obligations or conditions which may affect all or any portion of the leased Tract, it shall not relieve the Lessee of the obligation to pay any bonus due thereon to the Louisiana State Mineral and Energy Board, nor shall the Louisiana State Mineral and Energy Board be obligated to refund any consideration paid by the Lessor prior to such modification, cancellation, or abrogation, including, but not limited to, bonuses, rentals and royalties.

NOTE: The State of Louisiana does hereby reserve, and this lease shall be subject to, the imprescriptible right of surface use in the nature of a servitude in favor of the Department of Natural Resources, including its Offices and Commissions, for the sole purpose of implementing, constructing, servicing and maintaining approved coastal zone management and/or restoration projects. Utilization of any and all rights derived under this lease by the mineral lessee, its agents, successors or assigns, shall not interfere with nor hinder the reasonable surface use by the Department of Natural Resources, its Offices or Commissions, as herein above reserved.

Applicant: UEBER DEVELOPMENT

Bidder	Cash Payment	Price/Acre	Rental	Oil	Gas	Other

Legend
13120004
Active_Leases

