

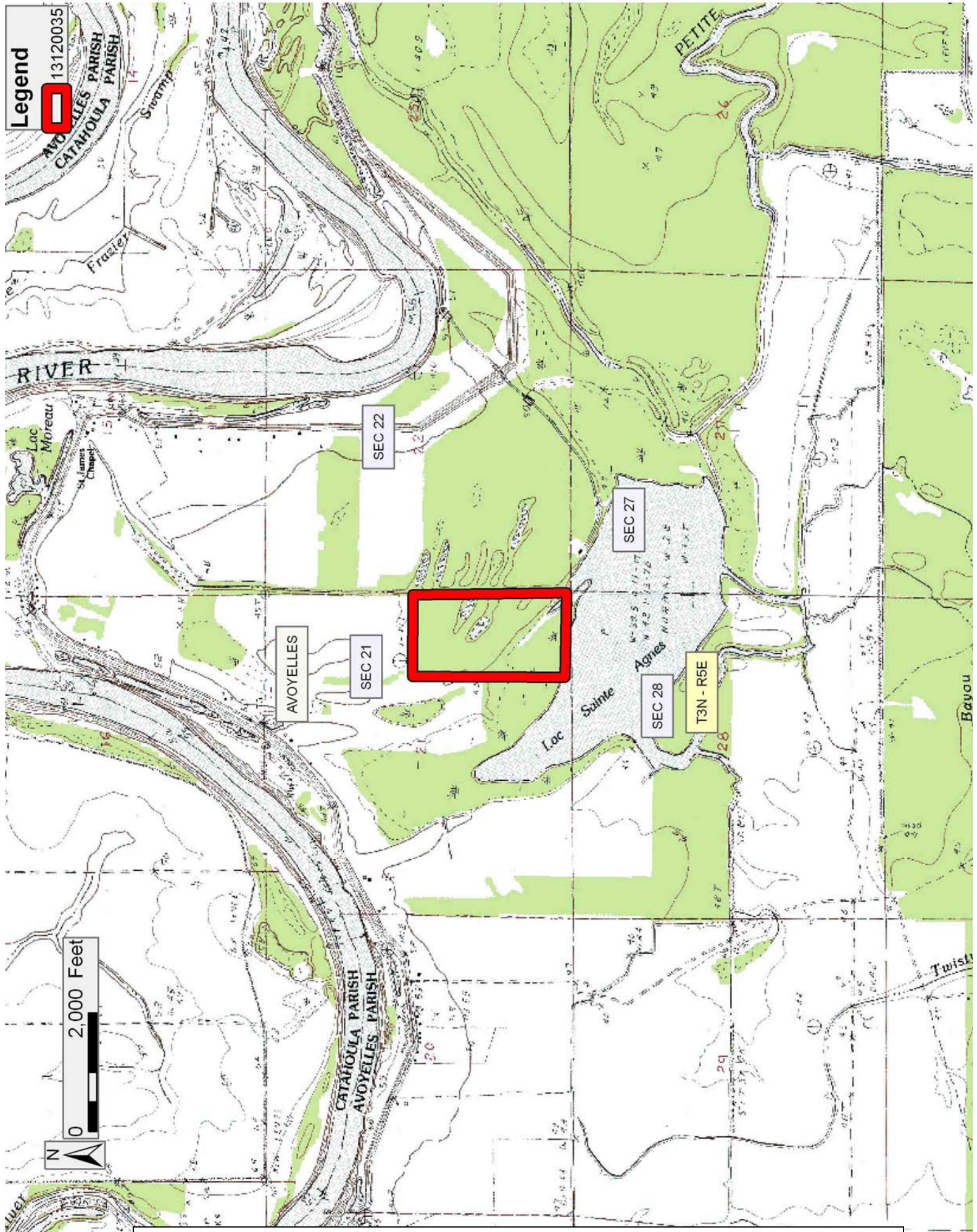
TRACT 43678 - Avoyelles Parish, Louisiana

A certain Tract of land, excluding the beds and bottoms of all navigable waters, belonging to and not presently under mineral lease from Red River, Atchafalaya & Bayou Boeuf Levee District on December 11, 2013, being more fully described as follows: That certain tract or parcel of land, excluding the beds and bottoms of all navigable waters, and being the East Half of the Southeast Quarter (E/2 of SE/4) of Section 21, Township 3 North, Range 5 East, Avoyelles Parish, Louisiana, containing **80.00 acres**, all as more particularly outlined on a plat on file in the Office of Mineral Resources, Department of Natural Resources. The description is based on information provided by the State Agency regarding location and ownership of surface and mineral rights. All bearings, distances and coordinates, if applicable, are based on Louisiana Coordinate System of 1927, (North or South Zone).

NOTE: The above description of the Tract nominated for lease has been provided and corrected, where required, exclusively by the nomination party. Any mineral lease selected from this Tract and awarded by the Louisiana State Mineral and Energy Board shall be without warranty of any kind, either express, implied, or statutory, including, but not limited to, the implied warranties of merchantability and fitness for a particular purpose. Should the mineral lease awarded by the Louisiana State Mineral and Energy Board be subsequently modified, cancelled or abrogated due to the existence of conflicting leases, operating agreements, private claims or other future obligations or conditions which may affect all or any portion of the leased Tract, it shall not relieve the Lessee of the obligation to pay any bonus due thereon to the Louisiana State Mineral and Energy Board, nor shall the Louisiana State Mineral and Energy Board be obligated to refund any consideration paid by the Lessor prior to such modification, cancellation, or abrogation, including, but not limited to, bonuses, rentals and royalties.

Applicant: PRIDE OIL & GAS PROPERTIES, INC. to Agency and by Resolution from the Red River, Atchafalaya & Bayou Boeuf Levee District authorizing the Mineral Board to act in its behalf

Bidder	Cash Payment	Price/Acre	Rental	Oil	Gas	Other



Legend
13120035

RIVER

Lac Moreau

2,000 Feet

N

SEC 22

AVOZELLES

SEC 21

SEC 27

SEC 28

T3N - R5E

Lac Sainte Agnes

PETITE

Twish