

**TRACT 43684 - Union Parish, Louisiana**

All lands, including lands now or formerly constituting the beds and bottoms of all water bodies of every nature and description, owned by and not presently under mineral lease as of December 11, 2013 from the State of Louisiana, situated in Union Parish, Louisiana, and being more fully described as follows: Those certain tracts or parcels of land, being described as the Northeast Quarter of the Northwest Quarter (NE/4 of NW/4) and the Southwest Quarter of the Northwest Quarter (SW/4 of NW/4) of Section 12 Township 22 North, Range 3 West, Union Parish, Louisiana, **LESS AND EXCEPT** the beds and bottoms of all navigable waters being .60 acres, containing approximately **79.40 acres**, all as more particularly outlined on a plat on file in the Office of Mineral Resources, Department of Natural Resources. All bearings, distances and coordinates are based on Louisiana Coordinate System of 1927, (North or South Zone), where applicable.

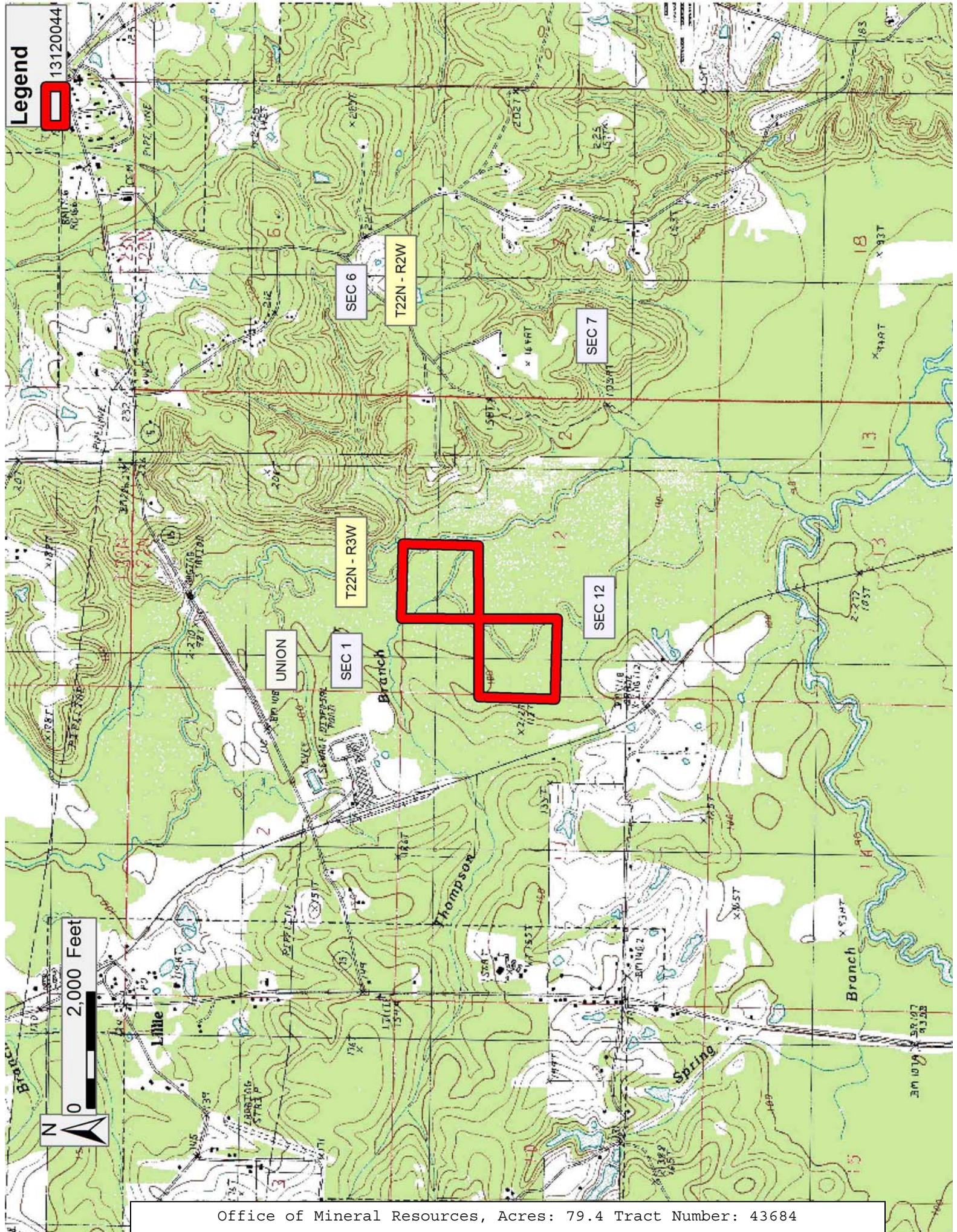
NOTE: The above description of the Tract nominated for lease has been provided and corrected, where required, exclusively by the nomination party. Any mineral lease selected from this Tract and awarded by the Louisiana State Mineral and Energy Board shall be without warranty of any kind, either express, implied, or statutory, including, but not limited to, the implied warranties of merchantability and fitness for a particular purpose. Should the mineral lease awarded by the Louisiana State Mineral and Energy Board be subsequently modified, cancelled or abrogated due to the existence of conflicting leases, operating agreements, private claims or other future obligations or conditions which may affect all or any portion of the leased Tract, it shall not relieve the Lessee of the obligation to pay any bonus due thereon to the Louisiana State Mineral and Energy Board, nor shall the Louisiana State Mineral and Energy Board be obligated to refund any consideration paid by the Lessor prior to such modification, cancellation, or abrogation, including, but not limited to, bonuses, rentals and royalties.

Applicant: T.S. DUDLEY LAND COMPANY, INC.

Bidder	Cash Payment	Price/Acre	Rental	Oil	Gas	Other



Legend  
13120044





**TRACT 43685 - Union Parish, Louisiana**

All lands, including lands now or formerly constituting the beds and bottoms of all water bodies of every nature and description, owned by and not presently under mineral lease as of December 11, 2013 from the State of Louisiana, situated in Union Parish, Louisiana, and being more fully described as follows: Those certain tracts or parcels of land, being described as the Southwest Quarter of the Northeast Quarter (SW/4 of NE/4) of Section 3 Township 21 North, Range 2 West, Union Parish, Louisiana, **LESS AND EXCEPT** the beds and bottoms of all navigable waters being .02 acres, containing approximately **39.38 acres**, all as more particularly outlined on a plat on file in the Office of Mineral Resources, Department of Natural Resources. All bearings, distances and coordinates are based on Louisiana Coordinate System of 1927, (North or South Zone), where applicable.

NOTE: The above description of the Tract nominated for lease has been provided and corrected, where required, exclusively by the nomination party. Any mineral lease selected from this Tract and awarded by the Louisiana State Mineral and Energy Board shall be without warranty of any kind, either express, implied, or statutory, including, but not limited to, the implied warranties of merchantability and fitness for a particular purpose. Should the mineral lease awarded by the Louisiana State Mineral and Energy Board be subsequently modified, cancelled or abrogated due to the existence of conflicting leases, operating agreements, private claims or other future obligations or conditions which may affect all or any portion of the leased Tract, it shall not relieve the Lessee of the obligation to pay any bonus due thereon to the Louisiana State Mineral and Energy Board, nor shall the Louisiana State Mineral and Energy Board be obligated to refund any consideration paid by the Lessor prior to such modification, cancellation, or abrogation, including, but not limited to, bonuses, rentals and royalties.

NOTE: The above Tract is located upon a restricted scenic river and all operations in this area must be conducted in strict conformity with the regulations of the Corps of Engineers, U.S. Army.

Applicant: T.S. DUDLEY LAND COMPANY, INC.

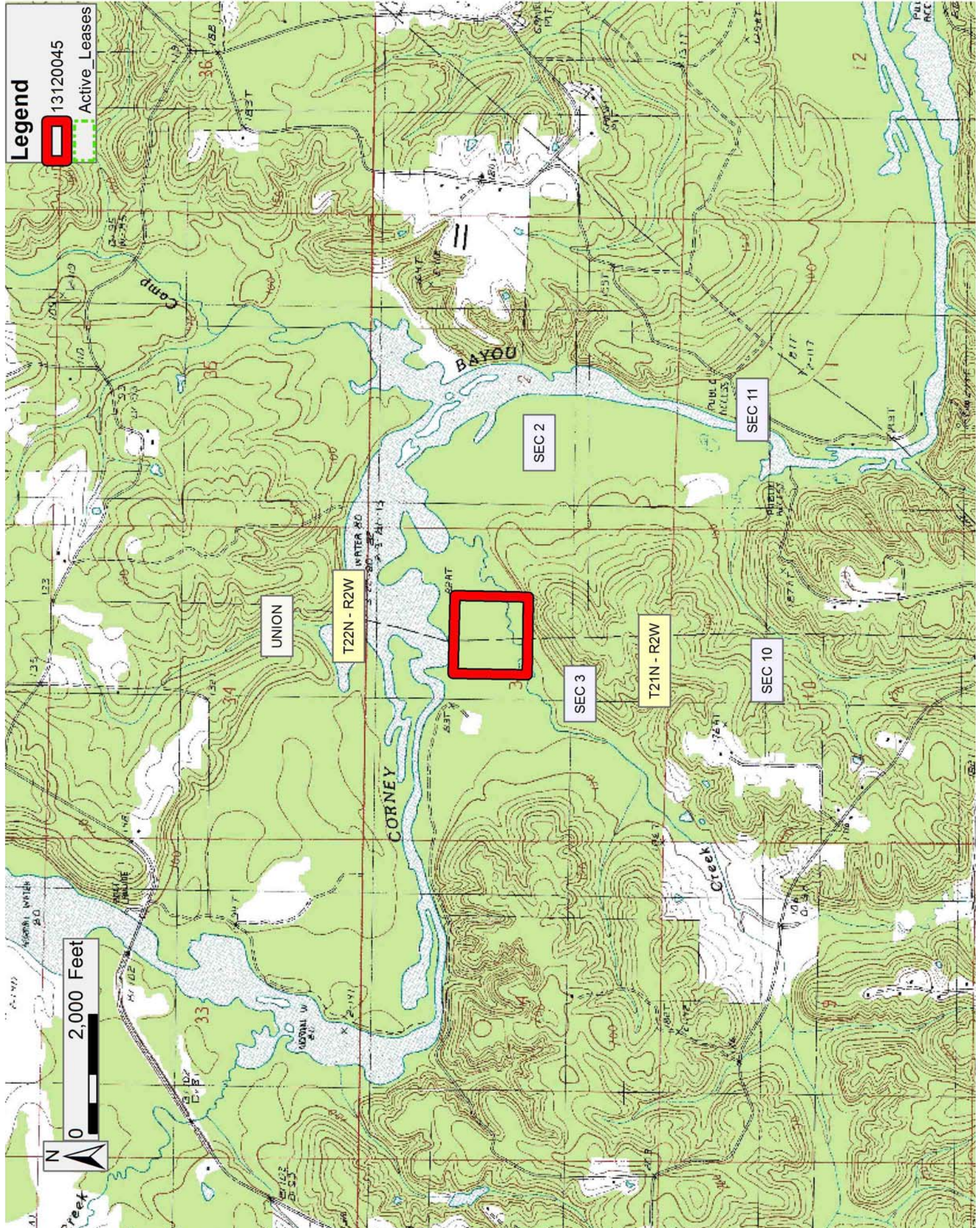
Bidder	Cash Payment	Price/Acre	Rental	Oil	Gas	Other



**Legend**

13120045

Active Leases





**TRACT 43686 - Union Parish, Louisiana**

The mineral rights only on and under all lands now or formerly constituting the beds and bottoms of all water bodies of every nature and description, and under all other lands owned by and not presently under mineral lease as of December 11, 2013, from the State of Louisiana situated in Union Parish, Louisiana, and being more fully described as follows: All the Mineral Rights only under that certain tract or parcel of land in the Southeast Quarter of the Southeast Quarter (SE/4 of SE/4) of Section 17, Township 21 North, Range 1 West, Union Parish, Louisiana. Being the same tract of land described in that certain instrument, dated October 19, 1957, whereby the State of Louisiana retained all the acreage in Sheriff's Sale Deed to Joe A. Patterson, under Entry No. 107569 of the Conveyance Records of Union Parish, Louisiana, containing approximately **39.89 acres**, all as more particularly outlined on a plat on file in the Office of Mineral Resources, Department of Natural Resources. All bearings, distances and coordinates are based on Louisiana Coordinate System of 1927, (North or South Zone), where applicable.

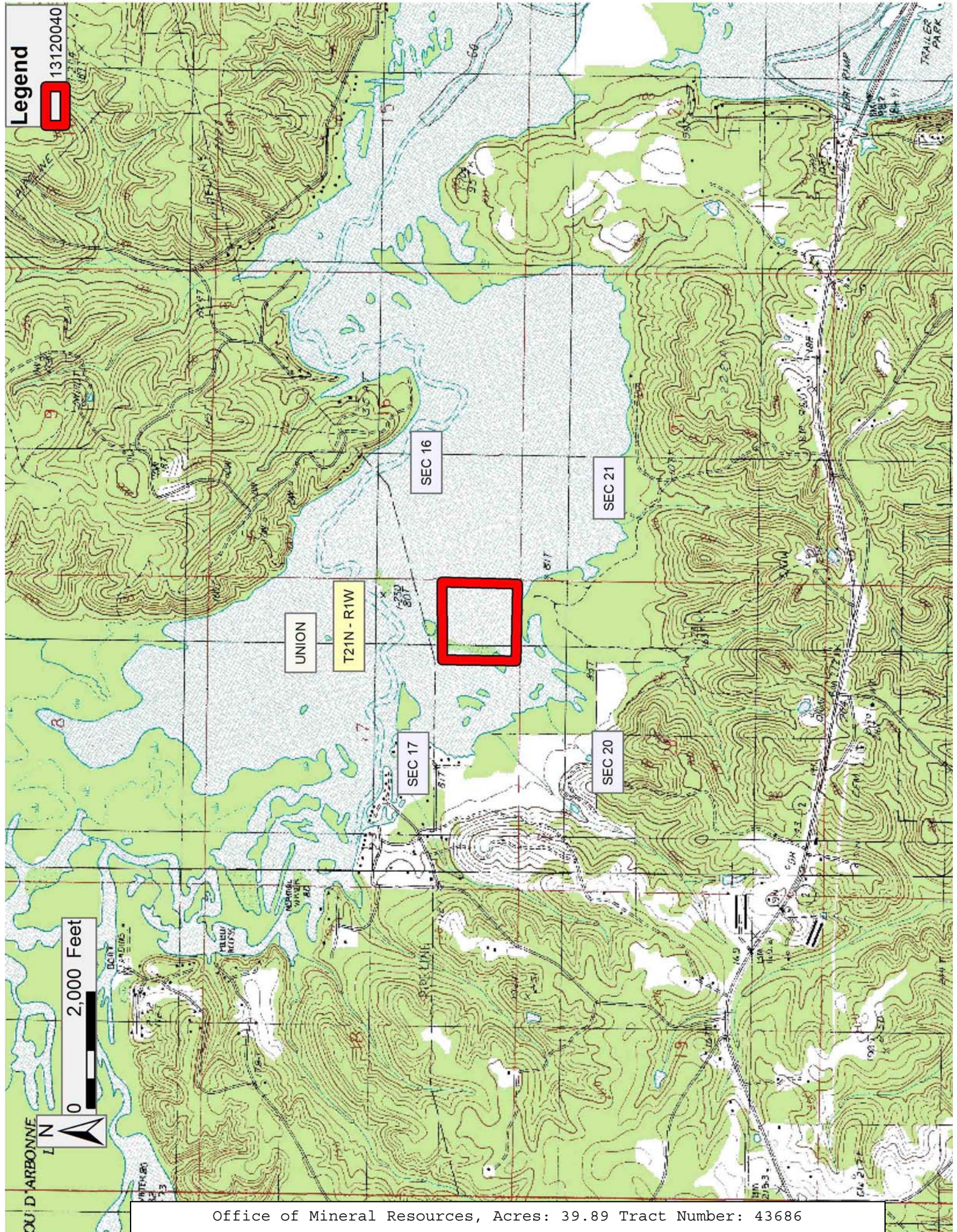
NOTE: The above description of the Tract nominated for lease has been provided and corrected, where required, exclusively by the nomination party. Any mineral lease selected from this Tract and awarded by the Louisiana State Mineral and Energy Board shall be without warranty of any kind, either express, implied, or statutory, including, but not limited to, the implied warranties of merchantability and fitness for a particular purpose. Should the mineral lease awarded by the Louisiana State Mineral and Energy Board be subsequently modified, cancelled or abrogated due to the existence of conflicting leases, operating agreements, private claims or other future obligations or conditions which may affect all or any portion of the leased Tract, it shall not relieve the Lessee of the obligation to pay any bonus due thereon to the Louisiana State Mineral and Energy Board, nor shall the Louisiana State Mineral and Energy Board be obligated to refund any consideration paid by the Lessor prior to such modification, cancellation, or abrogation, including, but not limited to, bonuses, rentals and royalties.

Applicant: T.S. DUDLEY LAND COMPANY, INC.

Bidder	Cash Payment	Price/Acre	Rental	Oil	Gas	Other



Legend  
13120040





**TRACT 43687 - Union Parish, Louisiana**

All lands, including lands now or formerly constituting the beds and bottoms of all water bodies of every nature and description, owned by and not presently under mineral lease as of December 11, 2013 from the State of Louisiana, situated in Union Parish, Louisiana, and being more fully described as follows: That certain tract or parcel of land, excluding the beds and bottoms of all the navigable waters, located in the North Half of the Northeast Quarter (N/2 of NE/4) and the Northeast Quarter of the Northwest Quarter (NE/4 of NW/4) of Section 21 Township 21 North, Range 1 West, Union Parish, Louisiana, containing approximately **120.00 acres**, all as more particularly outlined on a plat on file in the Office of Mineral Resources, Department of Natural Resources. All bearings, distances and coordinates are based on Louisiana Coordinate System of 1927, (North or South Zone), where applicable.

NOTE: The above description of the Tract nominated for lease has been provided and corrected, where required, exclusively by the nomination party. Any mineral lease selected from this Tract and awarded by the Louisiana State Mineral and Energy Board shall be without warranty of any kind, either express, implied, or statutory, including, but not limited to, the implied warranties of merchantability and fitness for a particular purpose. Should the mineral lease awarded by the Louisiana State Mineral and Energy Board be subsequently modified, cancelled or abrogated due to the existence of conflicting leases, operating agreements, private claims or other future obligations or conditions which may affect all or any portion of the leased Tract, it shall not relieve the Lessee of the obligation to pay any bonus due thereon to the Louisiana State Mineral and Energy Board, nor shall the Louisiana State Mineral and Energy Board be obligated to refund any consideration paid by the Lessor prior to such modification, cancellation, or abrogation, including, but not limited to, bonuses, rentals and royalties.

Applicant: T.S. DUDLEY LAND COMPANY, INC.

Bidder	Cash Payment	Price/Acre	Rental	Oil	Gas	Other

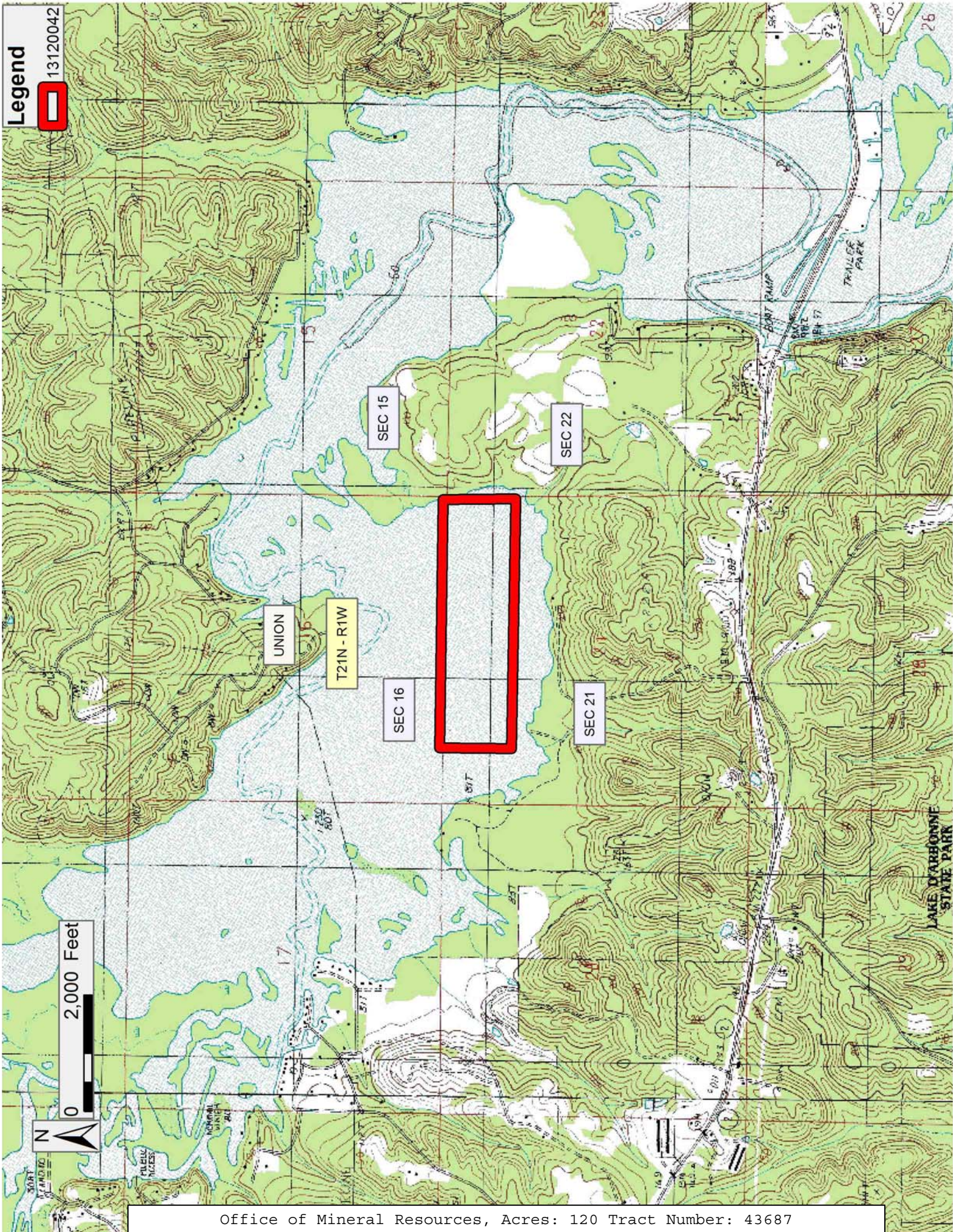


Legend



13120042

2,000 Feet





**TRACT 43688 - Lafourche Parish, Louisiana**

All lands, including lands now or formerly constituting the beds and bottoms of all water bodies of every nature and description, owned by and not presently under mineral lease as of December 11, 2013 from the State of Louisiana, situated in Lafourche Parish, Louisiana, and being more fully described as follows: That certain tract or parcel of land containing 38.12 acres, more or less, situated in Section 5, Township 17 South Range 19 East, Lafourche, Louisiana, and being described as Lot 2 of Section 5 in that Survey dated September 21, 1857 and is also described in Patent #1140563, dated September 1, 1953, more fully described as being a Division of State Lands Tract No. 3 29 034, containing approximately **32.02 acres**, all as more particularly outlined on a plat on file in the Office of Mineral Resources, Department of Natural Resources. All bearings, distances and coordinates are based on Louisiana Coordinate System of 1927, (North or South Zone), where applicable.

NOTE: The above description of the Tract nominated for lease has been provided and corrected, where required, exclusively by the nomination party. Any mineral lease selected from this Tract and awarded by the Louisiana State Mineral and Energy Board shall be without warranty of any kind, either express, implied, or statutory, including, but not limited to, the implied warranties of merchantability and fitness for a particular purpose. Should the mineral lease awarded by the Louisiana State Mineral and Energy Board be subsequently modified, cancelled or abrogated due to the existence of conflicting leases, operating agreements, private claims or other future obligations or conditions which may affect all or any portion of the leased Tract, it shall not relieve the Lessee of the obligation to pay any bonus due thereon to the Louisiana State Mineral and Energy Board, nor shall the Louisiana State Mineral and Energy Board be obligated to refund any consideration paid by the Lessor prior to such modification, cancellation, or abrogation, including, but not limited to, bonuses, rentals and royalties.

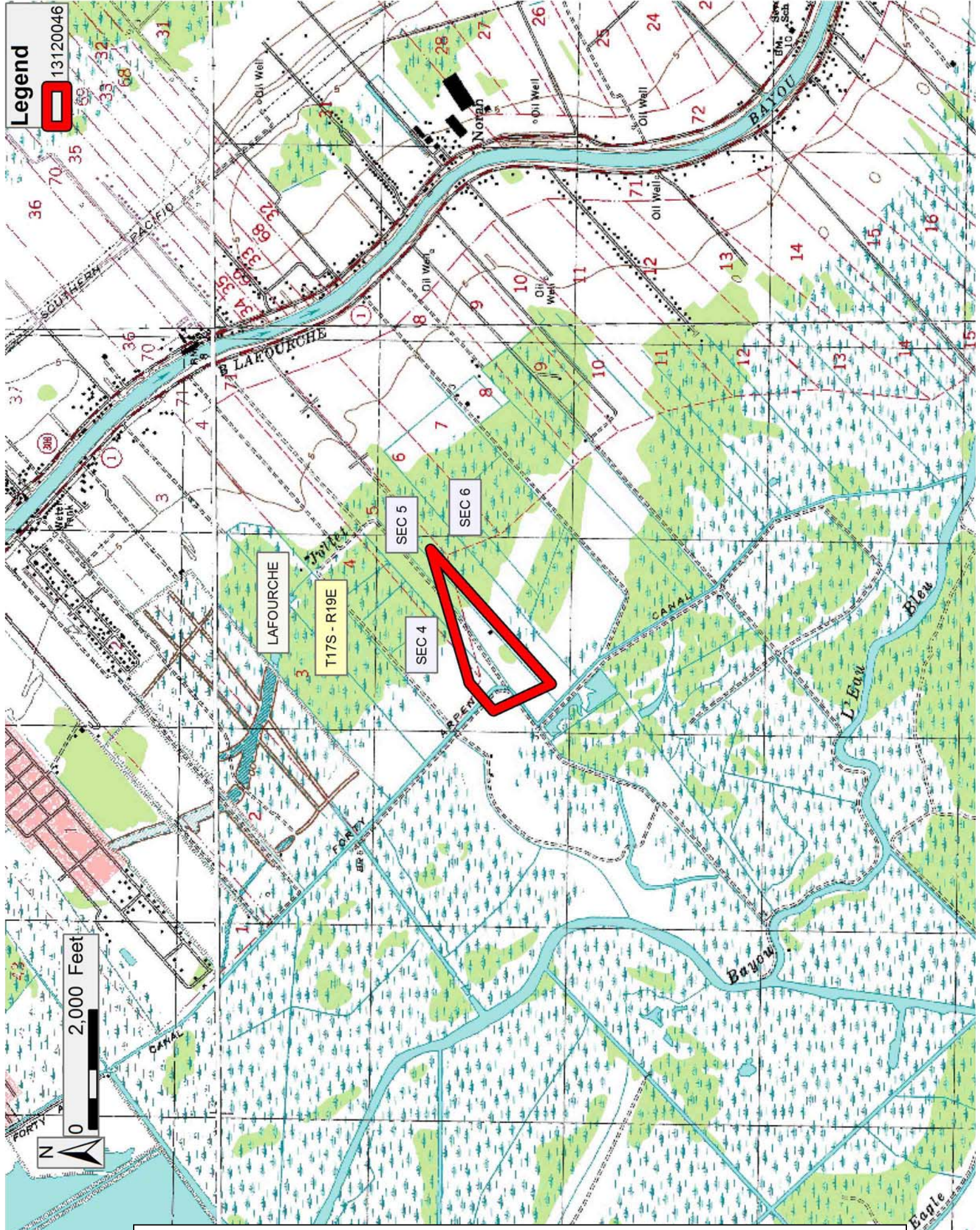
NOTE: The State of Louisiana does hereby reserve, and this lease shall be subject to, the imprescriptible right of surface use in the nature of a servitude in favor of the Department of Natural Resources, including its Offices and Commissions, for the sole purpose of implementing, constructing, servicing and maintaining approved coastal zone management and/or restoration projects. Utilization of any and all rights derived under this lease by the mineral lessee, its agents, successors or assigns, shall not interfere with nor hinder the reasonable surface use by the Department of Natural Resources, its Offices or Commissions, as herein above reserved.



Applicant: UEER DEVELOPMENT

Bidder	Cash Payment	Price/Acre	Rental	Oil	Gas	Other







**TRACT 43689 - Lafourche Parish, Louisiana**

All lands, including lands now or formerly constituting the beds and bottoms of all water bodies of every nature and description, owned by and not presently under mineral lease as of December 11, 2013 from the State of Louisiana, situated in Lafourche Parish, Louisiana, and being more fully described as follows: That certain tract or parcel of land containing 63.36 acres, more or less, situated in Section 7, Township 17 South Range 19 East, Lafourche, Louisiana, and being described as Lot 2 of Section 7 in that Survey dated September 21, 1857 and is also described in Patent #1140563, dated September 1, 1953, more fully described as being a Division of State Lands Tract No. 3 29 035, containing approximately **63.36 acres**, all as more particularly outlined on a plat on file in the Office of Mineral Resources, Department of Natural Resources. All bearings, distances and coordinates are based on Louisiana Coordinate System of 1927, (North or South Zone), where applicable.

NOTE: The above description of the Tract nominated for lease has been provided and corrected, where required, exclusively by the nomination party. Any mineral lease selected from this Tract and awarded by the Louisiana State Mineral and Energy Board shall be without warranty of any kind, either express, implied, or statutory, including, but not limited to, the implied warranties of merchantability and fitness for a particular purpose. Should the mineral lease awarded by the Louisiana State Mineral and Energy Board be subsequently modified, cancelled or abrogated due to the existence of conflicting leases, operating agreements, private claims or other future obligations or conditions which may affect all or any portion of the leased Tract, it shall not relieve the Lessee of the obligation to pay any bonus due thereon to the Louisiana State Mineral and Energy Board, nor shall the Louisiana State Mineral and Energy Board be obligated to refund any consideration paid by the Lessor prior to such modification, cancellation, or abrogation, including, but not limited to, bonuses, rentals and royalties.

NOTE: The State of Louisiana does hereby reserve, and this lease shall be subject to, the imprescriptible right of surface use in the nature of a servitude in favor of the Department of Natural Resources, including its Offices and Commissions, for the sole purpose of implementing, constructing, servicing and maintaining approved coastal zone management and/or restoration projects. Utilization of any and all rights derived under this lease by the mineral lessee, its agents, successors or assigns, shall not interfere with nor hinder the reasonable surface use by the Department of Natural Resources, its Offices or Commissions, as herein above reserved.

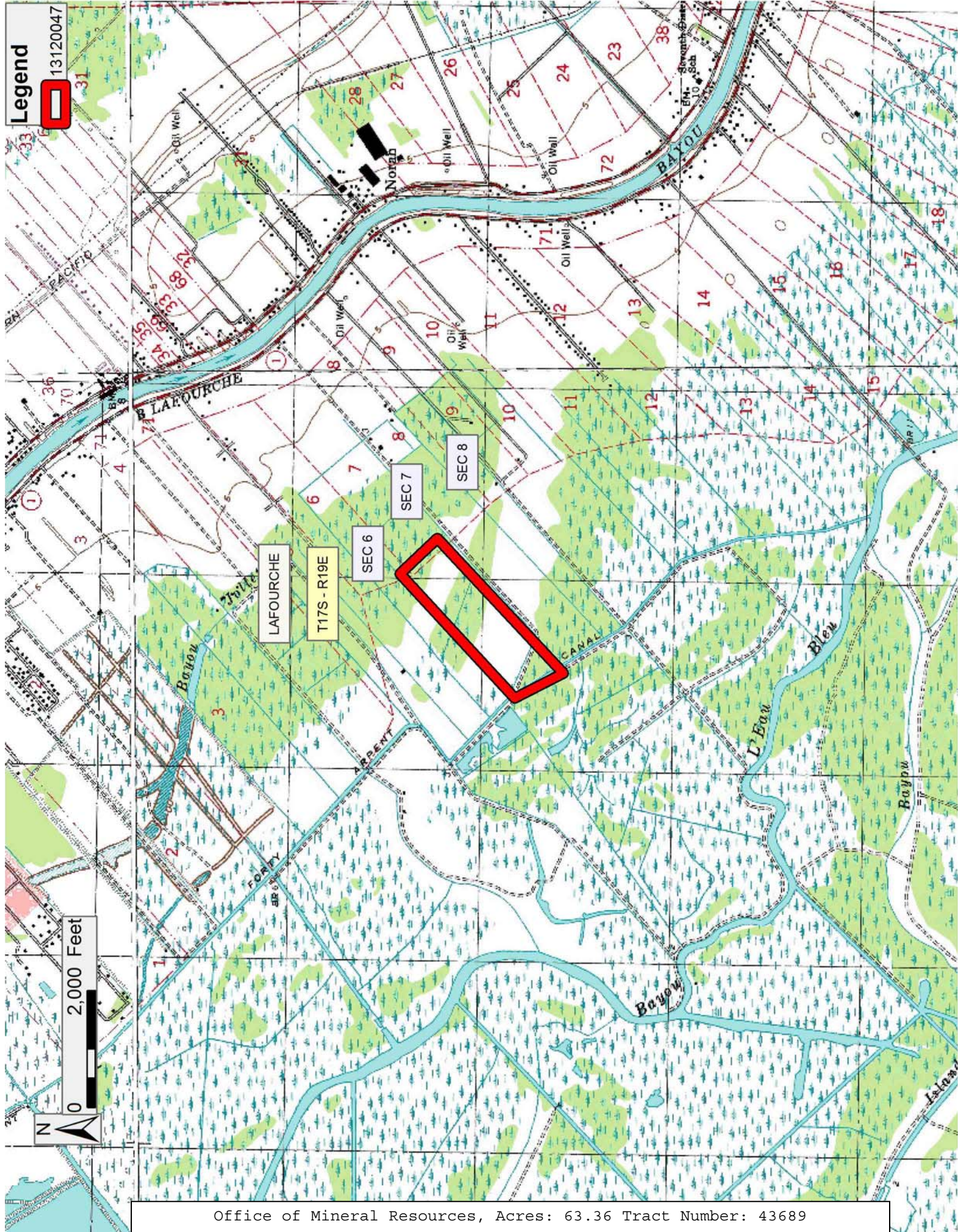


Applicant: UEER DEVELOPMENT

Bidder	Cash Payment	Price/Acre	Rental	Oil	Gas	Other



Legend  
13120047



Office of Mineral Resources, Acres: 63.36 Tract Number: 43689



**TRACT 43690 - Lafourche Parish, Louisiana**

All lands, including lands now or formerly constituting the beds and bottoms of all water bodies of every nature and description, owned by and not presently under mineral lease as of December 11, 2013 from the State of Louisiana, situated in Lafourche Parish, Louisiana, and being more fully described as follows: That certain tract or parcel of land containing 53.96 acres, more or less, situated in Section 11, Township 17 South Range 19 East, Lafourche, Louisiana, and being described as Lot 2 of Section 11 in that Survey dated September 21, 1857 and is also described in Patent #1140563, dated September 1, 1953, more fully described as being a Division of State Lands Tract No. 3 29 036, containing approximately **53.96 acres**, all as more particularly outlined on a plat on file in the Office of Mineral Resources, Department of Natural Resources. All bearings, distances and coordinates are based on Louisiana Coordinate System of 1927, (North or South Zone), where applicable.

NOTE: The above description of the Tract nominated for lease has been provided and corrected, where required, exclusively by the nomination party. Any mineral lease selected from this Tract and awarded by the Louisiana State Mineral and Energy Board shall be without warranty of any kind, either express, implied, or statutory, including, but not limited to, the implied warranties of merchantability and fitness for a particular purpose. Should the mineral lease awarded by the Louisiana State Mineral and Energy Board be subsequently modified, cancelled or abrogated due to the existence of conflicting leases, operating agreements, private claims or other future obligations or conditions which may affect all or any portion of the leased Tract, it shall not relieve the Lessee of the obligation to pay any bonus due thereon to the Louisiana State Mineral and Energy Board, nor shall the Louisiana State Mineral and Energy Board be obligated to refund any consideration paid by the Lessor prior to such modification, cancellation, or abrogation, including, but not limited to, bonuses, rentals and royalties.

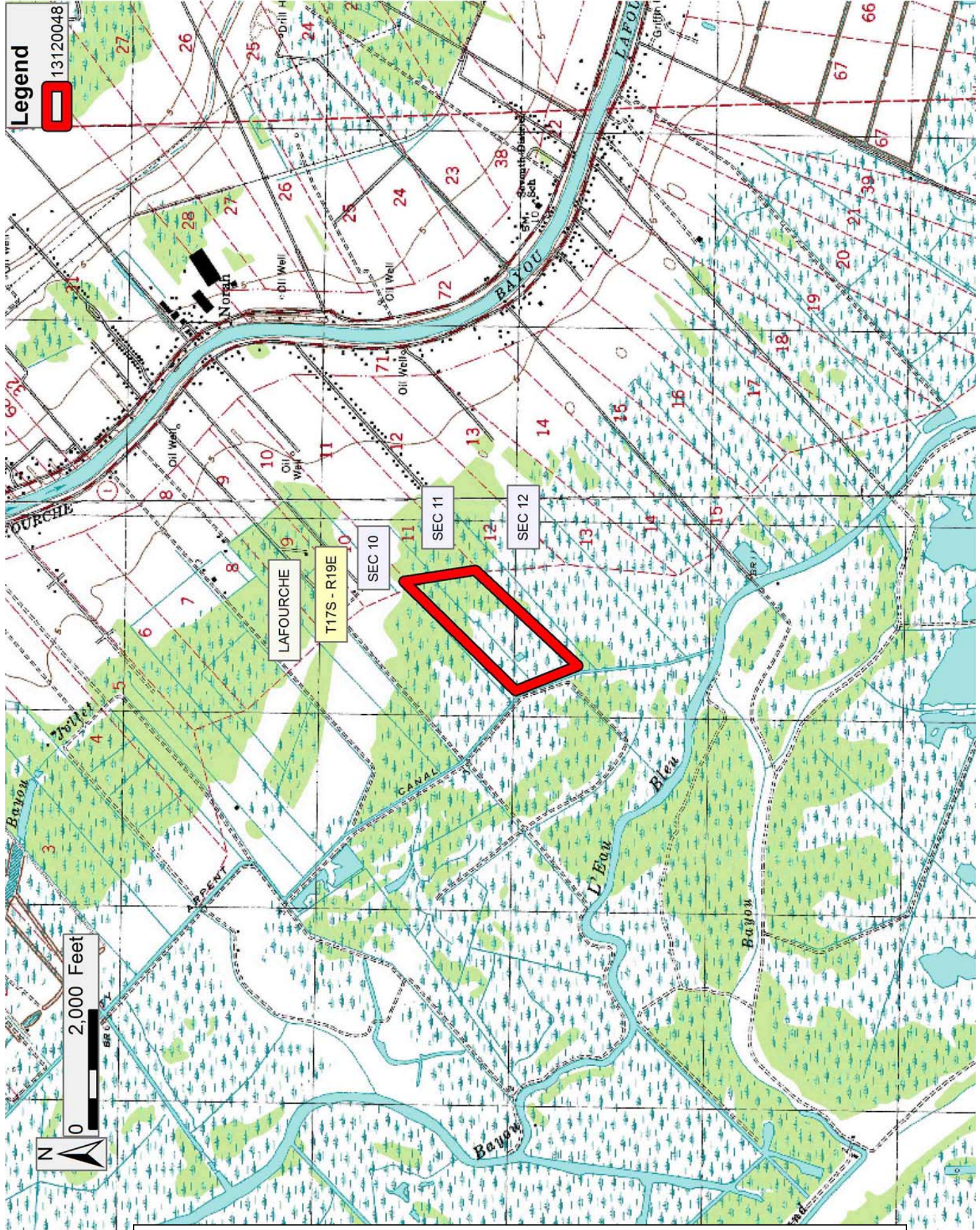
NOTE: The State of Louisiana does hereby reserve, and this lease shall be subject to, the imprescriptible right of surface use in the nature of a servitude in favor of the Department of Natural Resources, including its Offices and Commissions, for the sole purpose of implementing, constructing, servicing and maintaining approved coastal zone management and/or restoration projects. Utilization of any and all rights derived under this lease by the mineral lessee, its agents, successors or assigns, shall not interfere with nor hinder the reasonable surface use by the Department of Natural Resources, its Offices or Commissions, as herein above reserved.



Applicant: UEER DEVELOPMENT

Bidder	Cash Payment	Price/Acre	Rental	Oil	Gas	Other





Legend

13120048

