

**TRACT 43695 - Portion of Blocks 20, and 405, Eugene Island Area, Revised, Iberia and St. Mary Parishes, Louisiana**

The beds and bottoms of all water bodies belonging to the State of Louisiana located in Blocks 20, and 405, Eugene Island Area, Revised, together with any present lands formed by accretion to the shoreline or islands formed therein, located in Iberia and St. Mary Parishes, Louisiana, owned by and not presently under mineral lease as of January 8, 2014, from the State of Louisiana, the geographical area of which is more fully described as follows: Beginning at a point on the South boundary of State Lease No. 340, as amended, having Coordinates of X = 1,917,713.81 and Y = 260,000.00, said point also located within Block 405, Eugene Island Area, Revised; thence along the South boundary of said State Lease No. 340 the following courses: East 1,649.34 feet to a point having Coordinates of X = 1,919,363.15 and Y = 260,000.00, North 00 degrees 08 minutes 00 seconds East 3,183.57 feet to a point having Coordinates of X = 1,919,370.56 and Y = 263,183.56 and South 89 degrees 52 minutes 00 seconds East 5,464.38 feet to a point having Coordinates of X = 1,924,834.93 and Y = 263,170.84; thence South 15,156.53 feet to a point within Block 20, also being point on the Three Mile Line, as decreed by the Supreme Court of the United States, as determined by a Special Master appointed therein, in litigation styled *United States v. State of Louisiana et al No. 9 Original*, in 1975, having Coordinates of X = 1,924,834.93 and Y = 248,014.31; thence Northwesterly along an arc having a radius of 18,240.60 feet and a center located at X = 1,933,172 and Y = 264,238 to a point having Coordinates of X = 1,920,501 and Y = 251,117; thence Northwesterly along an arc having a radius of 18,240.60 feet and a center located at X = 1,924,399 and Y = 268,936 to a point having Coordinates of X = 1,917,713.81 and Y = 251,965.02; thence North 8,034.98 feet to the point of beginning, containing approximately **1,996.81 acres, LESS AND EXCEPT** that portion thereof, if any, lying seaward of the line three nautical miles from the coast line of Louisiana, as said three mile line has been decreed by the Supreme Court of the United States, as determined by a Special Master appointed therein, in litigation styled **United States v. State of Louisiana et al No. 9 Original**, in 1975, all as more particularly outlined on a plat in the Office of Mineral Resources, Department of Natural Resources. All bearings, distances and coordinates are based on the Louisiana Coordinate System of 1927, (South Zone).

NOTE: The above description of the Tract nominated for lease has been provided and corrected, where required, exclusively by the nomination party. Any mineral lease selected from this Tract and awarded by the Louisiana State Mineral and Energy Board shall be without warranty of any kind, either express, implied, or statutory, including, but not limited to, the implied warranties of merchantability and fitness for a particular purpose. Should the mineral lease awarded by the Louisiana State Mineral and Energy Board be subsequently modified, cancelled or abrogated due to the existence of conflicting leases, operating agreements, private claims or other future obligations or conditions which may affect all or any portion of the leased Tract, it shall not relieve the Lessee of the obligation to pay any bonus due thereon to the Louisiana State Mineral and

Energy Board, nor shall the Louisiana State Mineral and Energy Board be obligated to refund any consideration paid by the Lessor prior to such modification, cancellation, or abrogation, including, but not limited to, bonuses, rentals and royalties.

NOTE: The acreage contained herein, being a portion of State Lease 335, 340 or 341, was subject to the litigation between Texaco, Inc. and the State of Louisiana which resulted in the Global Settlement Agreement compromise whereby this acreage was reassigned through various mesne conveyances to the successors of William T. Burton, the original lessee of said leases from the State, (hereinafter otherwise referred to as the "ORRO's) and approved by the State Mineral and Energy Board, becoming effective April 25, 1994. Under separate agreement by and between the State and the ORRO's, certain obligations were to be met within a specified time frame or the ORRO's became obligated to release the reassigned acreage back to the State. The obligations were not met within the specified time frame and the State began securing the releases for the acreage contained herein. Due to the extremely large number of ORRO's, their nationwide and worldwide dispersal, the unreliability of available contact information and/or a present inability to obtain full, requisite cooperation, the State has, as yet, not secured releases from certain ORRO's representing approximately a .0258336 interest in this acreage. Accordingly, although the State is diligently pursuing the requisite releases affecting this acreage (the furnishing of which the ORRO's representing the stated decimal interest are obligated), nevertheless, a party obtaining a mineral lease from the State of Louisiana on the acreage contained herein shall do so with full knowledge that a complete release of all specific ORRO interest in this acreage has not as yet been secured and shall assume a business risk commensurate with the unsecured interest release.

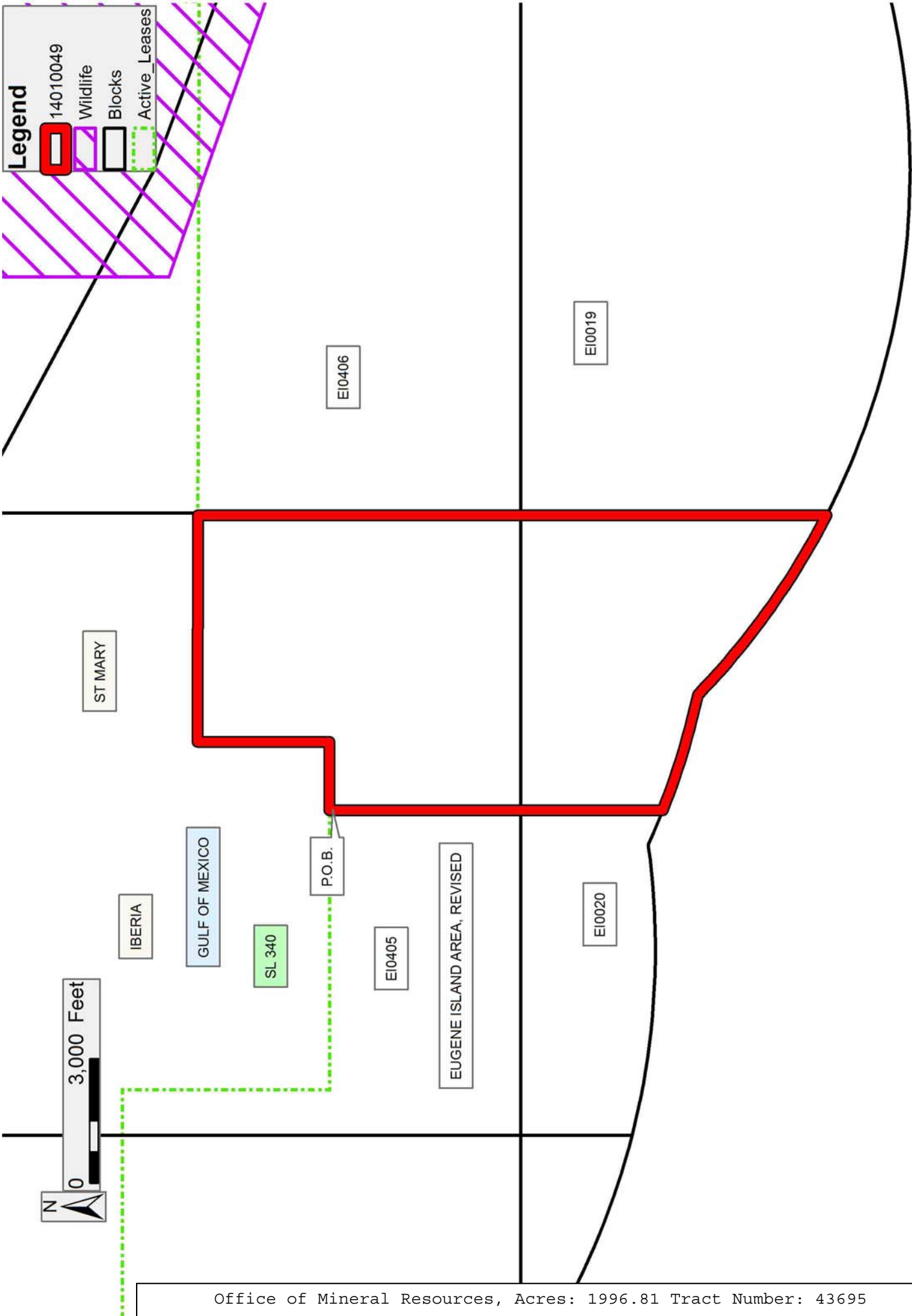
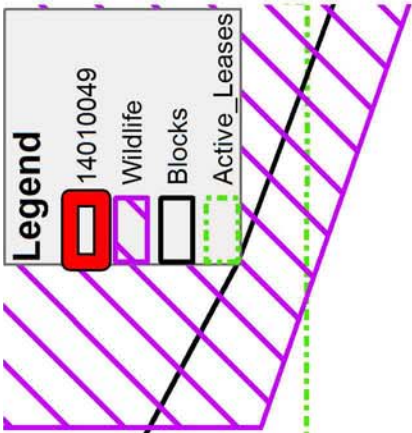
NOTE: The above described tract may be in the vicinity of existing shell reefs where drilling and dredging operations must be conducted in strict conformity with the regulations adopted by the Louisiana Department of Wildlife and Fisheries and/or the U.S. Corps of Engineers, U.S. Army.

NOTE: The State of Louisiana does hereby reserve, and this lease shall be subject to, the imprescriptible right of surface use in the nature of a servitude in favor of the Department of Natural Resources, including its Offices and Commissions, for the sole purpose of implementing, constructing, servicing and maintaining approved coastal zone management and/or restoration projects. Utilization of any and all rights derived under this lease by the mineral lessee, its agents, successors or assigns, shall not interfere with nor hinder the reasonable surface use by the Department of Natural Resources, its Offices or Commissions, as herein above reserved.

NOTE: This tract is located in an area designated by the Louisiana Legislature or the Wildlife and Fisheries Commission as a Public Oyster Seed Ground, Reservation, or area of Calcasieu or Sabine Lake. Proposed projects occurring in these areas will be evaluated on a case by case basis by Louisiana Department of Wildlife & Fisheries. Modifications to proposed project features including, but not limited to, access routes, well sites, flowlines, and appurtenant structures maybe required by the Louisiana Department of Wildlife and Fisheries. In addition, compensatory mitigation will be required to offset unavoidable habitat impacts.

Applicant: LESLIE M. COOPER

Bidder	Cash Payment	Price/Acre	Rental	Oil	Gas	Other



**TRACT 43696 - Portion of Blocks 19, 20, 405, and 406, Eugene Island Area, Revised, St. Mary Parish, Louisiana**

The beds and bottoms of all water bodies belonging to the State of Louisiana located in Blocks 19, 20, 405, and 406, Eugene Island Area, Revised, together with any present lands formed by accretion to the shoreline or islands formed therein, located in St. Mary Parish, Louisiana, owned by and not presently under mineral lease as of January 8, 2014, from the State of Louisiana, the geographical area of which is more fully described as follows: Beginning at a point on the South boundary of State Lease No. 340, as amended, having Coordinates of X = 1,924,834.93 and Y = 263,170.84, said point being within Block 405, Eugene Island Area, Revised; thence South 89 degrees 52 minutes 00 seconds East approximately 6,456 feet along the South boundary of said State Lease No. 340 to the Northwest corner of State Lease No. 21044 having Coordinates of X = 1,931,291.08 and Y = 263,155.82; thence South 41 degrees 01 minutes 51 seconds West 8,914.52 feet along the West boundary of said State Lease no. 21044 to its Southern tip and a point on the Western boundary of State Lease No. 20719 having Coordinates of X = 1,925,439.00 and Y = 256,431.10, South 04 degrees 22 minutes 43 seconds East 851.38 feet to a point having Coordinates of X = 1,925,504.00 and Y = 255,582.20, North 75 degrees 25 minutes 10 seconds East 3,629.90 feet to a point having Coordinates of X = 1,929,017.00 and Y = 256,496.00 and North 68 degrees 35 minutes 31 seconds East 464.87 feet to a point having Coordinates of X = 1,929,449.80 and Y = 256,665.68; thence South 10,284.34 feet to a point on the Three Mile Line, as decreed by the Supreme Court of the United States, as determined by a Special Master appointed therein, in litigation styled *United States v. State of Louisiana et al No. 9 Original*, in 1975, having Coordinates of X = 1,929,449.80 and Y = 246,381.35, said point also within Block 19; thence Northwesterly along an arc having a radius of 18,240.60 feet and a center located at X = 1,933,172.00 and Y = 264,238.00 to a point within Block 20 having Coordinates of X = 1,924,834.93 and Y = 248,014.31; thence North 15,156.53 feet to the point of beginning, **LESS AND EXCEPT** that portion, if any, of the above described tract which may lie inside of the boundary of the Atchafalaya Delta Wildlife Management Area, containing approximately **1,505.90 acres**, **LESS AND EXCEPT** that portion thereof, if any, lying seaward of the line three nautical miles from the coast line of Louisiana, as said three mile line has been decreed by the Supreme Court of the United States, as determined by a Special Master appointed therein, in litigation styled **United States v. State of Louisiana et al No. 9 Original**, in 1975, all as more particularly outlined on a plat in the Office of Mineral Resources, Department of Natural Resources. All bearings, distances and coordinates are based on the Louisiana Coordinate System of 1927, (South Zone).

NOTE: The above description of the Tract nominated for lease has been provided and corrected, where required, exclusively by the nomination party. Any mineral lease selected from this Tract and awarded by the Louisiana State Mineral and Energy Board shall be without warranty of any kind, either express, implied, or statutory, including, but not limited

to, the implied warranties of merchantability and fitness for a particular purpose. Should the mineral lease awarded by the Louisiana State Mineral and Energy Board be subsequently modified, cancelled or abrogated due to the existence of conflicting leases, operating agreements, private claims or other future obligations or conditions which may affect all or any portion of the leased Tract, it shall not relieve the Lessee of the obligation to pay any bonus due thereon to the Louisiana State Mineral and Energy Board, nor shall the Louisiana State Mineral and Energy Board be obligated to refund any consideration paid by the Lessor prior to such modification, cancellation, or abrogation, including, but not limited to, bonuses, rentals and royalties.

NOTE: The acreage contained herein, being a portion of State Lease 335, 340 or 341, was subject to the litigation between Texaco, Inc. and the State of Louisiana which resulted in the Global Settlement Agreement compromise whereby this acreage was reassigned through various mesne conveyances to the successors of William T. Burton, the original lessee of said leases from the State, (hereinafter otherwise referred to as the "ORRO's) and approved by the State Mineral and Energy Board, becoming effective April 25, 1994. Under separate agreement by and between the State and the ORRO's, certain obligations were to be met within a specified time frame or the ORRO's became obligated to release the reassigned acreage back to the State. The obligations were not met within the specified time frame and the State began securing the releases for the acreage contained herein. Due to the extremely large number of ORRO's, their nationwide and worldwide dispersal, the unreliability of available contact information and/or a present inability to obtain full, requisite cooperation, the State has, as yet, not secured releases from certain ORRO's representing approximately a .0258336 interest in this acreage. Accordingly, although the State is diligently pursuing the requisite releases affecting this acreage (the furnishing of which the ORRO's representing the stated decimal interest are obligated), nevertheless, a party obtaining a mineral lease from the State of Louisiana on the acreage contained herein shall do so with full knowledge that a complete release of all specific ORRO interest in this acreage has not as yet been secured and shall assume a business risk commensurate with the unsecured interest release.

NOTE: The above described tract may be in the vicinity of existing shell reefs where drilling and dredging operations must be conducted in strict conformity with the regulations adopted by the Louisiana Department of Wildlife and Fisheries and/or the U.S. Corps of Engineers, U.S. Army.

NOTE: The State of Louisiana does hereby reserve, and this lease shall be subject to, the imprescriptible right of surface use in the nature of a servitude in favor of the Department of Natural Resources, including its Offices and Commissions, for the sole purpose of implementing, constructing, servicing and maintaining approved coastal zone management

and/or restoration projects. Utilization of any and all rights derived under this lease by the mineral lessee, its agents, successors or assigns, shall not interfere with nor hinder the reasonable surface use by the Department of Natural Resources, its Offices or Commissions, as herein above reserved.

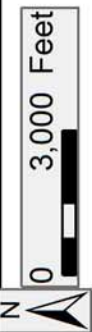
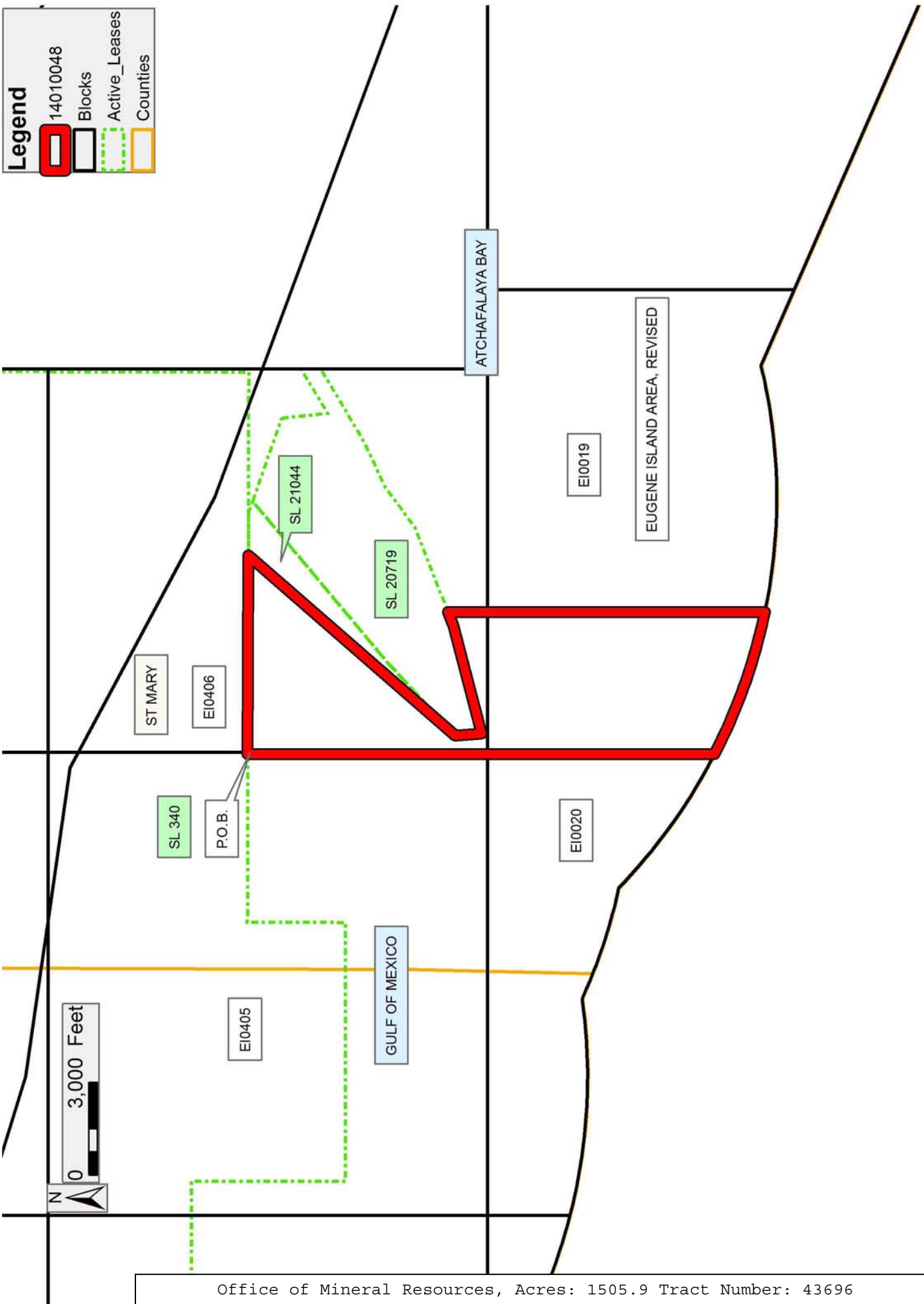
NOTE: This tract is located in an area designated by the Louisiana Legislature or the Wildlife and Fisheries Commission as a Public Oyster Seed Ground, Reservation, or area of Calcasieu or Sabine Lake. Proposed projects occurring in these areas will be evaluated on a case by case basis by Louisiana Department of Wildlife & Fisheries. Modifications to proposed project features including, but not limited to, access routes, well sites, flowlines, and appurtenant structures maybe required by the Louisiana Department of Wildlife and Fisheries. In addition, compensatory mitigation will be required to offset unavoidable habitat impacts.

Applicant: LESLIE M. COOPER

Bidder	Cash Payment	Price/Acre	Rental	Oil	Gas	Other

**Legend**

- 14010048
- Blocks
- Active\_Leases
- Counties





**TRACT 43697 - Portion of Blocks 13, 14, and 406, Eugene Island Area, Revised, St. Mary Parish, Louisiana**

The beds and bottoms of all water bodies belonging to the State of Louisiana located in Blocks 13, 14, and 406, Eugene Island Area, Revised, together with any present lands formed by accretion to the shoreline or islands formed therein, located in St. Mary Parish, Louisiana, owned by and not presently under mineral lease as of January 8, 2014, from the State of Louisiana, the geographical area of which is more fully described as follows: Beginning at a point having Coordinates of X = 1,929,449.80 and Y = 255,384.16; thence North 1,281.52 feet to a point on the South boundary of State Lease No. 20719 having Coordinates of X = 1,929,449.80 and Y = 256,665.68; thence along the boundary of said State Lease No. 20719 the following courses: North 68 degrees 35 minutes 31 seconds East 2,971.21 feet to a point having Coordinates of X = 1,932,216.00 and Y = 257,750.20, North 53 degrees 19 minutes 48 seconds East 1,594.59 feet to a point having Coordinates of X = 1,933,495.00 and Y = 258,702.50, North 65 degrees 07 minutes 43 seconds East 1,582.80 feet to a point having Coordinates of X = 1,934,931.00 and Y = 259,368.20 and North 59 degrees 37 minutes 47 seconds East 1,394.07 feet to the Southwest corner of State Lease No. 21045 having Coordinates of X = 1,936,133.77 and Y = 260,073.02; thence North 83 degrees 28 minutes 30 seconds East 4,039.02 feet to its most Eastern point and the most western point of State Lease No. 21205 having Coordinates of X = 1,940,146.62 and Y = 260,532.00; thence along the boundaries of said State Lease No. 21205 the following courses: South 53 degrees 16 minutes 47 seconds East 3,315.23 feet to a point having Coordinates of X = 1,942,804.00 and Y = 258,549.80 and South 89 degrees 39 minutes 06 seconds East 3,072.95 feet to its most eastern point and a point of intersection with the South boundary of the Atchafalaya Delta Wildlife Management Area having Coordinates of X = 1,945,876.90 and Y = 258,531.12; thence Southeasterly, on a straight line, approximately 5,160.66 feet to a point on the Northwest boundary of the West portion of State Lease No. 1666, as amended having Coordinates of X = 1,950,749.07 and Y = 256,829.86; thence South 42 degrees 36 minutes 51 seconds West 692.81 feet and South 47 degrees 37 minutes 24 seconds West 786.35 feet along the Northwest boundary of said State Lease No. 1666 to its Northwest corner located on the East boundary of State Lease No. 1665, as amended having Coordinates of X = 1,949,699.10 and Y = 255,790.00; thence along the boundary of said State Lease No. 1665 the following courses: North 670.00 feet to a point having Coordinates of X = 1,949,699.10 and Y = 256,460.00, South 17 degrees 34 minutes 11 seconds West 227.23 feet, South 62 degrees 10 minutes 50 seconds West 565.80 feet, South 62 degrees 16 minutes 31 seconds West 169.20 feet, North 47 degrees 02 minutes 43 seconds West 312.30 feet, North 48 degrees 14 minutes 23 seconds West 375.37 feet, South 61 degrees 41 minutes 57 seconds West 1,289.86 feet, North 21 degrees 53 minutes 42 seconds East 41.70 feet, North 18 degrees 20 minutes 57 seconds East 209.08 feet, North 16 degrees 41 minutes 45 seconds East 249.85 feet, North 12 degrees 40 minutes 03 seconds East 236.08 feet, North 03 degrees 13 minutes 16 seconds East 174.23 feet, North 02 degrees 03 minutes 05 seconds West

174.04 feet, North 08 degrees 45 minutes 22 seconds West 212.24 feet, North 12 degrees 03 minutes 24 seconds West 207.34 feet, North 15 degrees 55 minutes 38 seconds West 126.41 feet, North 30 degrees 08 minutes 59 seconds West 112.87 feet, North 31 degrees 34 minutes 34 seconds West 185.86 feet, North 39 degrees 05 minutes 19 seconds West 155.85 feet, North 43 degrees 35 minutes 31 seconds West 138.13 feet, North 48 degrees 16 minutes 57 seconds West 164.49 feet, North 57 degrees 08 minutes 26 seconds West 187.88 feet, North 66 degrees 04 minutes 49 seconds West 134.79 feet, North 71 degrees 40 minutes 25 seconds West 103.40 feet, North 71 degrees 39 minutes 50 seconds West 73.33 feet, North 80 degrees 37 minutes 35 seconds West 145.63 feet, North 85 degrees 34 minutes 09 seconds West 424.31 feet, South 86 degrees 45 minutes 49 seconds West 263.22 feet, South 82 degrees 55 minutes 26 seconds West 286.47 feet, South 77 degrees 02 minutes 29 seconds West 201.30 feet, South 73 degrees 37 minutes 50 seconds West 335.88 feet, South 73 degrees 18 minutes 52 seconds West 313.95 feet, South 69 degrees 33 minutes 48 seconds West 339.60 feet, South 66 degrees 28 minutes 28 seconds West 656.43 feet, South 65 degrees 41 minutes 04 seconds West 562.17 feet, South 65 degrees 26 minutes 36 seconds West 520.89 feet, South 66 degrees 32 minutes 29 seconds West 472.31 feet, South 66 degrees 04 minutes 00 seconds West 171.22 feet, South 85 degrees 51 minutes 52 seconds West 271.92 feet, South 85 degrees 51 minutes 55 seconds West 416.08 feet, South 84 degrees 05 minutes 38 seconds West 291.55 feet, South 82 degrees 19 minutes 16 seconds West 449.03 feet, South 80 degrees 32 minutes 16 seconds West 456.21 feet, South 78 degrees 10 minutes 43 seconds West 219.66 feet, South 76 degrees 30 minutes 15 seconds West 257.10 feet, South 75 degrees 25 minutes 33 seconds West 258.31 feet, South 69 degrees 18 minutes 16 seconds West 240.52 feet, South 67 degrees 22 minutes 49 seconds West 260.00 feet, South 64 degrees 30 minutes 57 seconds West 592.66 feet, South 60 degrees 15 minutes 18 seconds West 201.56 feet, South 50 degrees 42 minutes 38 seconds West 142.13 feet, South 46 degrees 38 minutes 12 seconds West 123.79 feet, South 36 degrees 52 minutes 12 seconds West 100.00 feet, South 30 degrees 27 minutes 56 seconds West 98.62 feet, South 27 degrees 53 minutes 50 seconds West 96.18 feet and South 16 degrees 12 minutes 29 seconds West 89.56 feet to its Southwest corner having Coordinates of X = 1,937,945.00 and Y = 255,394.00; thence South 89 degrees 56 minutes 01 seconds West 8,495.21 feet to the point of beginning, **LESS AND EXCEPT** that portion, if any, of the above described tract which may lie inside of the boundary of the Atchafalaya Delta Wildlife Management Area, containing approximately **1,173.83 acres**, all as more particularly outlined on a plat on file in the Office of Mineral Resources, Department of Natural Resources. All bearings, distances and coordinates are based on Louisiana Coordinate System of 1927, (North or South Zone).

NOTE: The above description of the Tract nominated for lease has been provided and corrected, where required, exclusively by the nomination

party. Any mineral lease selected from this Tract and awarded by the Louisiana State Mineral and Energy Board shall be without warranty of any kind, either express, implied, or statutory, including, but not limited to, the implied warranties of merchantability and fitness for a particular purpose. Should the mineral lease awarded by the Louisiana State Mineral and Energy Board be subsequently modified, cancelled or abrogated due to the existence of conflicting leases, operating agreements, private claims or other future obligations or conditions which may affect all or any portion of the leased Tract, it shall not relieve the Lessee of the obligation to pay any bonus due thereon to the Louisiana State Mineral and Energy Board, nor shall the Louisiana State Mineral and Energy Board be obligated to refund any consideration paid by the Lessor prior to such modification, cancellation, or abrogation, including, but not limited to, bonuses, rentals and royalties.

NOTE: The acreage contained herein, being a portion of State Lease 335, 340 or 341, was subject to the litigation between Texaco, Inc. and the State of Louisiana which resulted in the Global Settlement Agreement compromise whereby this acreage was reassigned through various mesne conveyances to the successors of William T. Burton, the original lessee of said leases from the State, (hereinafter otherwise referred to as the "ORRO's) and approved by the State Mineral and Energy Board, becoming effective April 25, 1994. Under separate agreement by and between the State and the ORRO's, certain obligations were to be met within a specified time frame or the ORRO's became obligated to release the reassigned acreage back to the State. The obligations were not met within the specified time frame and the State began securing the releases for the acreage contained herein. Due to the extremely large number of ORRO's, their nationwide and worldwide dispersal, the unreliability of available contact information and/or a present inability to obtain full, requisite cooperation, the State has, as yet, not secured releases from certain ORRO's representing approximately a .0258336 interest in this acreage. Accordingly, although the State is diligently pursuing the requisite releases affecting this acreage (the furnishing of which the ORRO's representing the stated decimal interest are obligated), nevertheless, a party obtaining a mineral lease from the State of Louisiana on the acreage contained herein shall do so with full knowledge that a complete release of all specific ORRO interest in this acreage has not as yet been secured and shall assume a business risk commensurate with the unsecured interest release.

NOTE: The above described tract may be in the vicinity of existing shell reefs where drilling and dredging operations must be conducted in strict conformity with the regulations adopted by the Louisiana Department of Wildlife and Fisheries and/or the U.S. Corps of Engineers, U.S. Army.

NOTE: The State of Louisiana does hereby reserve, and this lease shall be subject to, the imprescriptible right of surface use in the nature of a

servitude in favor of the Department of Natural Resources, including its Offices and Commissions, for the sole purpose of implementing, constructing, servicing and maintaining approved coastal zone management and/or restoration projects. Utilization of any and all rights derived under this lease by the mineral lessee, its agents, successors or assigns, shall not interfere with nor hinder the reasonable surface use by the Department of Natural Resources, its Offices or Commissions, as herein above reserved.

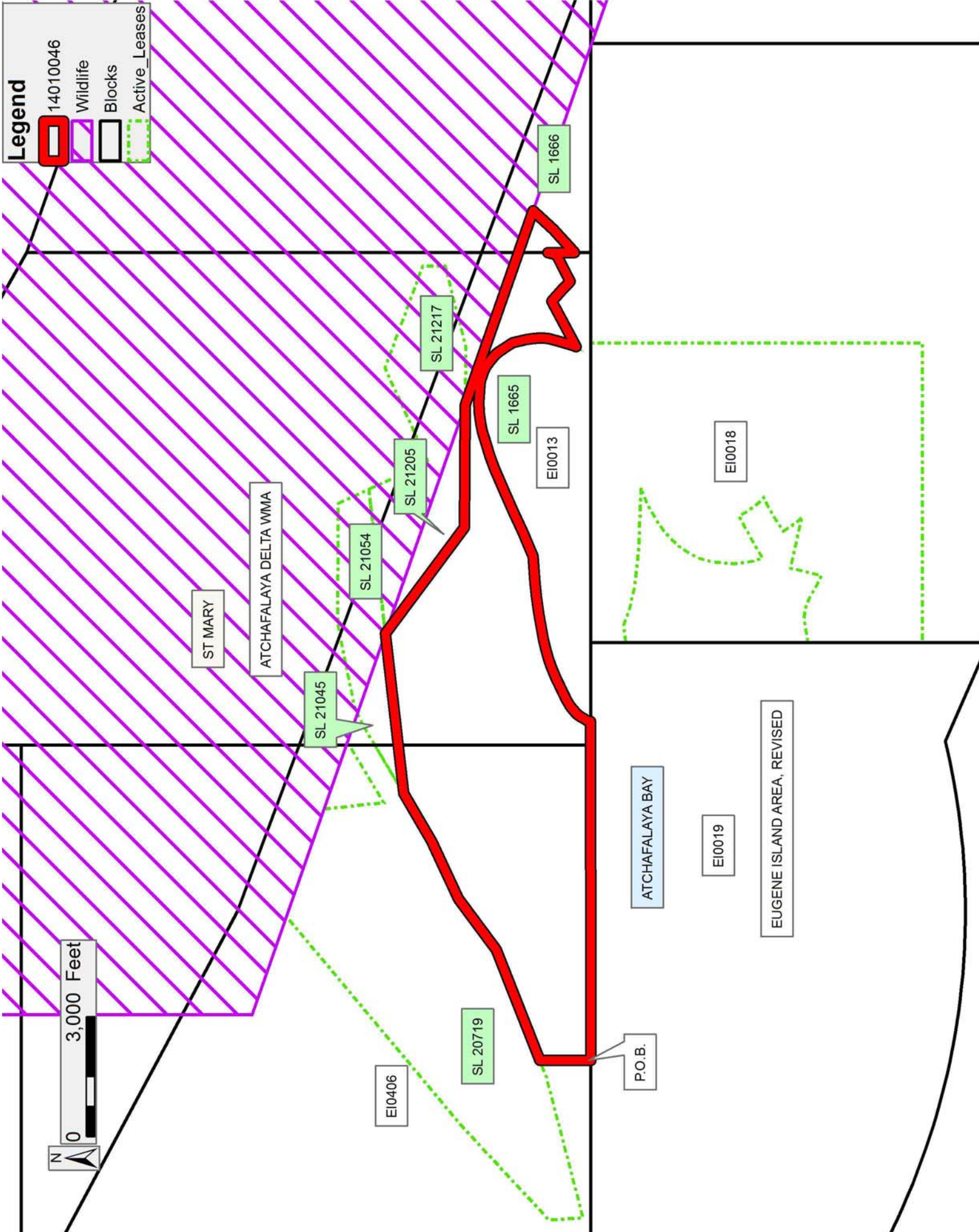
NOTE: This tract is located in an area designated by the Louisiana Legislature or the Wildlife and Fisheries Commission as a Public Oyster Seed Ground, Reservation, or area of Calcasieu or Sabine Lake. Proposed projects occurring in these areas will be evaluated on a case by case basis by Louisiana Department of Wildlife & Fisheries. Modifications to proposed project features including, but not limited to, access routes, well sites, flowlines, and appurtenant structures maybe required by the Louisiana Department of Wildlife and Fisheries. In addition, compensatory mitigation will be required to offset unavoidable habitat impacts.

Applicant: LESLIE M. COOPER

Bidder	Cash Payment	Price/Acre	Rental	Oil	Gas	Other

**Legend**

- 14010046
- Wildlife
- Blocks
- Active\_Leases



**TRACT 43698 - Portion of Blocks 20, 21, 404, and 405, Eugene Island Area, Revised, Iberia and St. Mary Parishes, Louisiana**

The beds and bottoms of all water bodies belonging to the State of Louisiana located in Blocks 20, 21, 404, and 405, Eugene Island Area, Revised, together with any present lands formed by accretion to the shoreline or islands formed therein, located in Iberia and St. Mary Parishes, Louisiana, owned by and not presently under mineral lease as of January 8, 2014, from the State of Louisiana, the geographical area of which is more fully described as follows: Beginning at a point within Block 404, Eugene Island Area, Revised having Coordinates of X = 1,899,373.81 and Y = 260,000.00; thence East 11,598.19 feet to the most Southernmost Southwest corner of State Lease No. 340, as amended, having Coordinates of X = 1,910,972.00 and Y = 260,000.00, said point located within Block 405; thence East 6,741.81 feet along the South boundary of said State Lease No. 340 to a point having Coordinates of X = 1,917,713.81 and Y = 260,000.00; thence South 8,034.98 feet to a point lying within Block 20, said point also located on the Three Mile Line, as decreed by the Supreme Court of the United States, as determined by a Special Master appointed therein, in litigation styled *United States v. State of Louisiana et al No. 9 Original*, in 1975, having Coordinates of X = 1,917,713.81 and Y = 251,965.02; thence Northwesterly along an arc having a radius of 18,240.60 feet and a center located at X = 1,924,399 and Y = 268,936 to a point having Coordinates of X = 1,916,888 and Y = 252,314; thence Northwesterly along an arc having a radius of 18,240.60 feet and a center located at X = 1,914,373 and Y = 270,380 to a point having Coordinates of X = 1,900,989.00 and Y = 257,987.00; thence North 38 degrees 44 minutes 34 seconds West 2,580.89 feet to the point of beginning, containing approximately **2,497.76 acres, LESS AND EXCEPT** that portion thereof, if any, lying seaward of the line three nautical miles from the coast line of Louisiana, as said three mile line has been decreed by the Supreme Court of the United States, as determined by a Special Master appointed therein, in litigation styled **United States v. State of Louisiana et al No. 9 Original**, in 1975, all as more particularly outlined on a plat in the Office of Mineral Resources, Department of Natural Resources. All bearings, distances and coordinates are based on the Louisiana Coordinate System of 1927, (South Zone).

NOTE: The above description of the Tract nominated for lease has been provided and corrected, where required, exclusively by the nomination party. Any mineral lease selected from this Tract and awarded by the Louisiana State Mineral and Energy Board shall be without warranty of any kind, either express, implied, or statutory, including, but not limited to, the implied warranties of merchantability and fitness for a particular purpose. Should the mineral lease awarded by the Louisiana State Mineral and Energy Board be subsequently modified, cancelled or abrogated due to the existence of conflicting leases, operating agreements, private claims or other future obligations or conditions which may affect all or any portion of the leased Tract, it shall not relieve the Lessee of the obligation to pay any bonus due thereon to the Louisiana State Mineral and

Energy Board, nor shall the Louisiana State Mineral and Energy Board be obligated to refund any consideration paid by the Lessor prior to such modification, cancellation, or abrogation, including, but not limited to, bonuses, rentals and royalties.

NOTE: The above described tract may be in the vicinity of existing shell reefs where drilling and dredging operations must be conducted in strict conformity with the regulations adopted by the Louisiana Department of Wildlife and Fisheries and/or the U.S. Corps of Engineers, U.S. Army.

NOTE: The State of Louisiana does hereby reserve, and this lease shall be subject to, the imprescriptible right of surface use in the nature of a servitude in favor of the Department of Natural Resources, including its Offices and Commissions, for the sole purpose of implementing, constructing, servicing and maintaining approved coastal zone management and/or restoration projects. Utilization of any and all rights derived under this lease by the mineral lessee, its agents, successors or assigns, shall not interfere with nor hinder the reasonable surface use by the Department of Natural Resources, its Offices or Commissions, as herein above reserved.

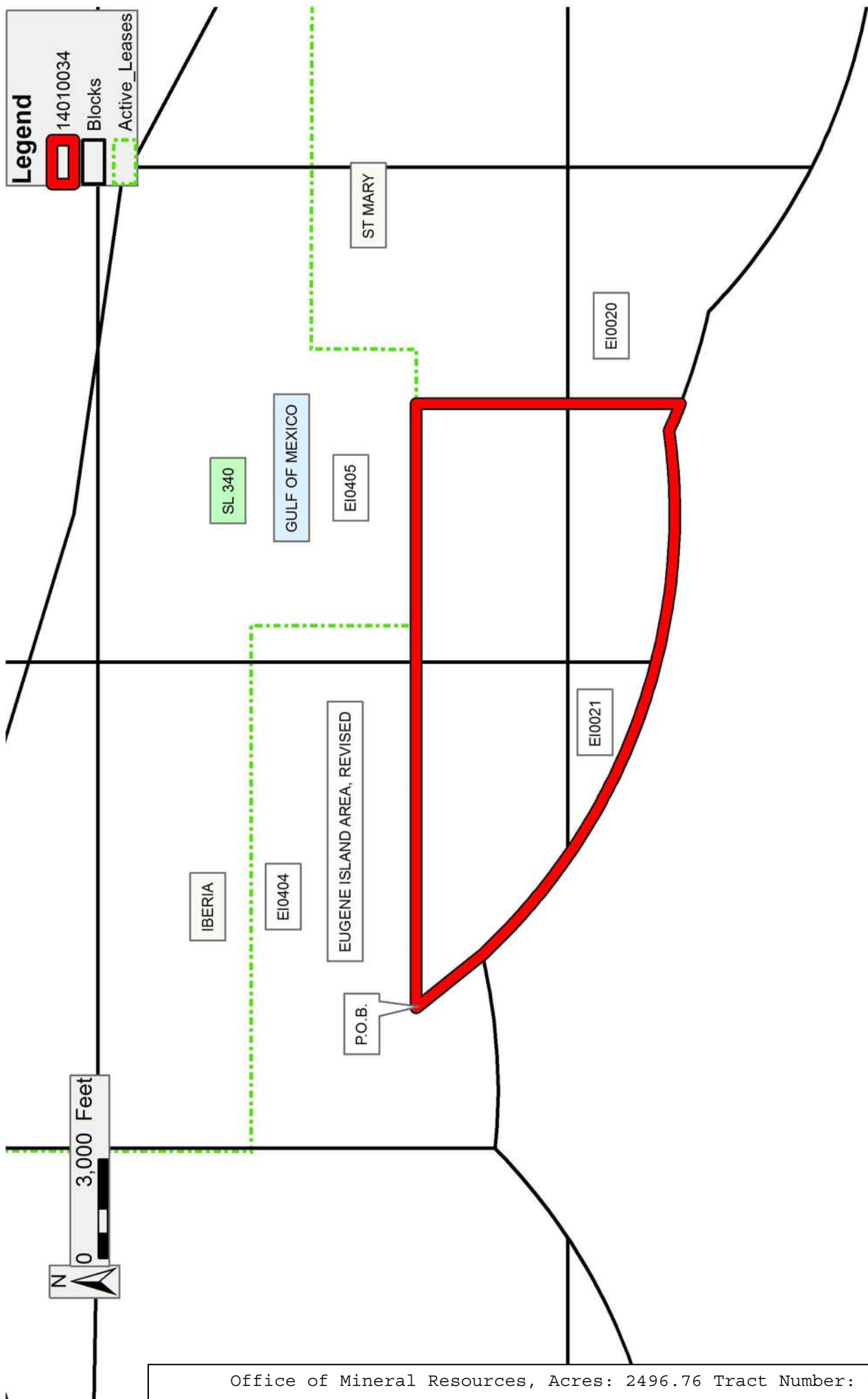
NOTE: This tract is located in an area designated by the Louisiana Legislature or the Wildlife and Fisheries Commission as a Public Oyster Seed Ground, Reservation, or area of Calcasieu or Sabine Lake. Proposed projects occurring in these areas will be evaluated on a case by case basis by Louisiana Department of Wildlife & Fisheries. Modifications to proposed project features including, but not limited to, access routes, well sites, flowlines, and appurtenant structures maybe required by the Louisiana Department of Wildlife and Fisheries. In addition, compensatory mitigation will be required to offset unavoidable habitat impacts.

Applicant: LESLIE M. COOPER

Bidder	Cash Payment	Price/Acre	Rental	Oil	Gas	Other

**Legend**

- 14010034 Blocks
- Active\_Leases





**TRACT 43699 - Portion of Blocks 14, 17, and 18, Eugene Island Area, Revised, St. Mary Parish, Louisiana**

The beds and bottoms of all water bodies belonging to the State of Louisiana located in Blocks 14, 17, and 18, Eugene Island Area, Revised, together with any present lands formed by accretion to the shoreline or islands formed therein, located in St. Mary Parish, Louisiana, owned by and not presently under mineral lease as of January 8, 2014, from the State of Louisiana, the geographical area of which is more fully described as follows: Beginning at the Northeast corner of State Lease No. 1536, as amended, located on the South line of Block 14, Eugene Island Area, Revised having Coordinates of X = 1,953,990.00 and Y = 255,394.00; thence West 30.00 feet along the South line of said Block 14 to the Southeast corner of State Lease No. 1666, as amended having Coordinates of X = 1,953,960.00 and Y = 255,394.00; thence along the Eastern boundary of said State Lease No. 1666 the following courses: North 34 degrees 52 minutes 53 seconds West 142.88 feet and North 43 degrees 37 minutes 45 seconds West approximately 468 feet to a point on the Southern boundary of the Atchafalaya Delta Wildlife Management Area; thence Southeasterly, on a straight line, approximately 1,661 feet along the said Southern boundary to its point of intersection with the North boundary of State Lease No. 16988, said point located within Block 17; thence Northwesterly along North boundary of said State Lease No. 16988 along an arc to the having a radius of 6,200.00 feet and a center located at X = 1,954,689.23 and Y = 261,487.00 to the Northeast corner of State Lease No. 16585 having Coordinates of X = 1,954,933.52 and Y = 255,291.81, said point located on the East line of Block 18; thence along the North boundary of said State Lease No. 16985 the following: Westerly along an arc having a radius of 6,200.00 feet and a center at X = 1,954,689.33 and Y = 261,487.00 to a point having Coordinates of X = 1,954,039.96 and Y = 255,321.10, said point being the Northwest corner of said State Lease No. 16985 located on the East boundary of said State Lease No. 1536; thence North 34 degrees 25 minutes 18 seconds West 88.37 feet along the East boundary of said State Lease No. 1536 to the point of beginning, **LESS AND EXCEPT** that portion, if any, of the above described tract which may lie inside of the boundary of the Atchafalaya Delta Wildlife Management Area, containing approximately **6.81 acres**, all as more particularly outlined on a plat on file in the Office of Mineral Resources, Department of Natural Resources. All bearings, distances and coordinates are based on Louisiana Coordinate System of 1927, (North or South Zone).

NOTE: The above description of the Tract nominated for lease has been provided and corrected, where required, exclusively by the nomination party. Any mineral lease selected from this Tract and awarded by the Louisiana State Mineral and Energy Board shall be without warranty of any kind, either express, implied, or statutory, including, but not limited to, the implied warranties of merchantability and fitness for a particular purpose. Should the mineral lease awarded by the Louisiana State Mineral and Energy Board be subsequently modified, cancelled or abrogated due to the existence of conflicting leases, operating agreements, private claims

or other future obligations or conditions which may affect all or any portion of the leased Tract, it shall not relieve the Lessee of the obligation to pay any bonus due thereon to the Louisiana State Mineral and Energy Board, nor shall the Louisiana State Mineral and Energy Board be obligated to refund any consideration paid by the Lessor prior to such modification, cancellation, or abrogation, including, but not limited to, bonuses, rentals and royalties.

NOTE: The above described tract may be in the vicinity of existing shell reefs where drilling and dredging operations must be conducted in strict conformity with the regulations adopted by the Louisiana Department of Wildlife and Fisheries and/or the U.S. Corps of Engineers, U.S. Army.

NOTE: The State of Louisiana does hereby reserve, and this lease shall be subject to, the imprescriptible right of surface use in the nature of a servitude in favor of the Department of Natural Resources, including its Offices and Commissions, for the sole purpose of implementing, constructing, servicing and maintaining approved coastal zone management and/or restoration projects. Utilization of any and all rights derived under this lease by the mineral lessee, its agents, successors or assigns, shall not interfere with nor hinder the reasonable surface use by the Department of Natural Resources, its Offices or Commissions, as herein above reserved.

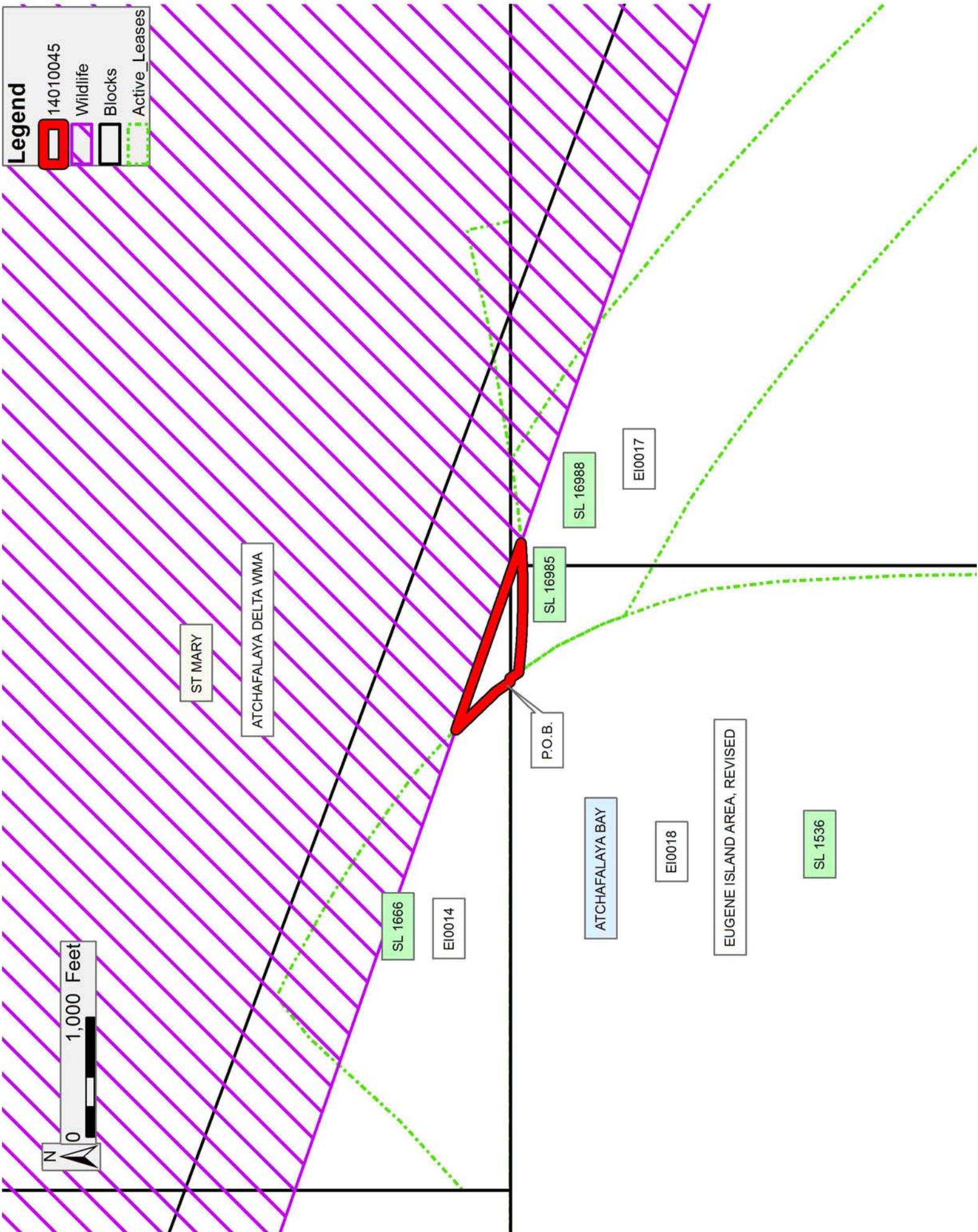
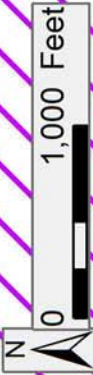
NOTE: This tract is located in an area designated by the Louisiana Legislature or the Wildlife and Fisheries Commission as a Public Oyster Seed Ground, Reservation, or area of Calcasieu or Sabine Lake. Proposed projects occurring in these areas will be evaluated on a case by case basis by Louisiana Department of Wildlife & Fisheries. Modifications to proposed project features including, but not limited to, access routes, well sites, flowlines, and appurtenant structures maybe required by the Louisiana Department of Wildlife and Fisheries. In addition, compensatory mitigation will be required to offset unavoidable habitat impacts.

Applicant: LESLIE M. COOPER

Bidder	Cash Payment	Price/Acre	Rental	Oil	Gas	Other

**Legend**

- 14010045
- Wildlife
- Blocks
- Active\_Leases



**TRACT 43700 - Portion of Blocks 18, and 19, Eugene Island Area, Revised, St. Mary Parish, Louisiana**

The beds and bottoms of all water bodies belonging to the State of Louisiana located in Blocks 18, and 19, Eugene Island Area, Revised, together with any present lands formed by accretion to the shoreline or islands formed therein, located in St. Mary Parish, Louisiana, owned by and not presently under mineral lease as of January 8, 2014, from the State of Louisiana, the geographical area of which is more fully described as follows: Beginning at a point located within Block 19, Eugene Island Area, Revised having Coordinates of X = 1,929,449.80 and Y = 255,384.16; thence North 89 degrees 56 minutes 01 seconds East 8,495.21 feet to the Westernmost tip of State Lease No. 1665, as amended, having Coordinates of X = 1,937,945.00 and Y = 255,394.00; thence East 1,966.36 feet along the South boundary of said State Lease No. 1665 to the Northwest corner of State Lease No. 1667, as amended, having Coordinates of X = 1,939,911.36 and Y = 255,394.00, said point being within Block 18; thence along the boundaries of said State Lease No. 1667 the following courses: South 884.00 feet to a point having Coordinates of X = 1,939,911.36 and Y = 254,510.00, Northeasterly 220.69 feet to a point having Coordinates of X = 1,940,130.00 and Y = 254,540.00, Northeasterly 215.25 feet to a point having Coordinates of X = 1,940,343.93 and Y = 254,563.77, Southeasterly 104.08 feet to a point having Coordinates of X = 1,940,442.80 and Y = 254,531.26, Southeasterly 305.05 feet to a point having Coordinates of X = 1,940,728.90 and Y = 254,425.43, South 76 degrees 42 minutes 19 second East 392.07 feet, South 77 degrees 57 minutes 28 seconds East 265.73 feet, South 83 degrees 08 minutes 54 seconds East 156.83 feet, South 83 degrees 51 minutes 42 seconds East 413.91 feet, South 84 degrees 27 minutes 56 seconds East 371.71 feet, South 88 degrees 31 minutes 48 seconds East 404.61 feet, South 87 degrees 29 minutes 27 seconds East 418.92 feet, South 87 degrees 37 minutes 56 seconds East 501.04 feet, South 88 degrees 48 minutes 16 seconds East 166.90 feet, South 71 degrees 16 minutes 44 seconds West 193.72 feet, South 66 degrees 41 minutes 39 seconds West 218.84 feet, South 61 degrees 45 minutes 20 seconds West 248.12 feet, South 59 degrees 11 minutes 08 seconds West 313.53 feet, South 55 degrees 14 minutes 48 seconds West 239.30 feet, South 49 degrees 18 minutes 39 seconds West 151.54 feet, South 45 degrees 55 minutes 53 seconds West 161.38 feet, South 42 degrees 09 minutes 18 seconds West 237.91 feet, South 34 degrees 56 minutes 14 seconds West 249.25 feet, South 29 degrees 15 minutes 16 seconds West 180.13 feet, South 25 degrees 52 minutes 01 seconds West 184.65 feet, South 16 degrees 30 minutes 21 seconds West 179.61 feet, South 13 degrees 16 minutes 55 seconds West 127.88 feet, South 06 degrees 26 minutes 52 seconds West 315.23 feet, South 02 degrees 39 minutes 17 seconds West 252.81 feet, South 04 degrees 31 minutes 19 seconds East 245.42 feet, South 12 degrees 04 minutes 16 seconds East 233.97 feet, South 16 degrees 05 minutes 29 seconds East 239.74 feet, North 60 degrees 32 minutes 47 seconds East 165.16 feet, North 60 degrees 08 minutes 01 seconds East 389.67 feet, North 60 degrees 28 minutes 30 seconds East 331.43 feet, North 62 degrees 27 minutes 04 seconds East 315.30 feet, South 32 degrees 16 minutes 32 seconds East 293.34 feet,

South 36 degrees 01 minutes 39 seconds East 272.03 feet, South 47 degrees 12 minutes 09 seconds East 216.56 feet, thence Southwesterly along an arc to the left having a radius of 5,314.00 feet and a center at X = 1,945,844.10 and Y = 246,261.36 to a point having Coordinates of X = 1,942,720.20 and Y = 250,560.05; thence Southeasterly along an arc to the left having a radius of 2,320.00 feet and a center at X = 1,944,757.83 and Y = 251,668.98 to a point having Coordinates of X = 1,943,046.87 and Y = 250,103.46; North 77 degrees 30 minutes 00 seconds West 1,293.69 feet to a point having Coordinates of X = 1,941,783.84 and Y = 250,383.47, South 13 degrees 15 minutes 00 seconds West 800.00 feet to a point having Coordinates of X = 1,941,600.48 and Y = 249,604.76, North 63 degrees 26 minutes 06 seconds West 246.50 feet, North 60 degrees 15 minutes 18 seconds West 403.11 feet, North 68 degrees 23 minutes 07 seconds West 285.04 feet, North 85 degrees 30 minutes 55 seconds West 255.78 feet, South 81 degrees 07 minutes 10 seconds West 323.88 feet, South 75 degrees 04 minutes 08 seconds West 155.24 feet, North 81 degrees 09 minutes 44 seconds West 130.19 feet to the Northeast corner of State Lease No. F0006, as amended, having Coordinates of X = 1,939,911.36 and Y = 249,970.00; thence along the boundaries of said State Lease No. F0006 the following courses: North 85 degrees 38 minutes 48 seconds West 131.74 feet to a point having Coordinates of X = 1,939,780.01 and Y = 249,980.00, North 75 degrees 22 minutes 45 seconds West 237.70 feet to a point having Coordinates of X = 1,939,550.01 and Y = 250,040.00, North 84 degrees 00 minutes 23 seconds West 191.54 feet to a point having Coordinates of X = 1,939,359.52 and Y = 250,060.00, South 61 degrees 52 minutes 32 seconds West 254.57 feet to a point having Coordinates of X = 1,939,135.00 and Y = 249,940.00, South 35 degrees 23 minutes 41 seconds West 233.08 feet to a point having Coordinates of X = 1,939,000.00 and Y = 249,750.00, South 28 degrees 26 minutes 35 seconds West 272.95 feet to a point having Coordinates of X = 1,938,869.99 and Y = 249,509.99, South 02 degrees 12 minutes 09 seconds West 260.19 feet to a point having Coordinates of X = 1,938,860.00 and Y = 249,250.00, South 11 degrees 53 minutes 19 seconds East 291.25 feet to a point having Coordinates of X = 1,938,920.00 and Y = 248,964.99, South 22 degrees 28 minutes 46 seconds East 313.85 feet to a point having Coordinates of X = 1,938,920.00 and Y = 248,964.99, South 36 degrees 51 minutes 57 seconds East 258.12 feet to a point having Coordinates of 1,939,194.86 and Y = 248,468.48, South 30 degrees 58 minutes 54 seconds East 126.54 feet to a point having Coordinates of X = 1,939,260.00 and Y = 248,360.00, South 38 degrees 39 minutes 35 seconds East 384.19 feet to a point having Coordinates of X 1,939,500.00 and Y = 248,059.99, South 45 degrees 00 minutes 00 seconds East 438.41 feet to a point having Coordinates of X = 1,939,810.00 and Y = 247,749.99 and South 84 degrees 21 minutes 56 seconds East 101.85 feet to its Southeast corner and a point on the West boundary of said State Lease No. 1667 having Coordinates of X = 1,939,911.36 and Y = 247,739.99; thence South 00 degrees 00 minutes 01 seconds West 660.68 feet along the West boundary of said State Lease No. 1667 to its Southwest corner having Coordinates of X = 1,939,911.36 and Y = 247,079.31; thence South 1,652.69 feet to a point on the Three Mile Line, as decreed by the Supreme Court of the United

States, as determined by a Special Master appointed therein, in litigation styled *United States v. State of Louisiana et al No. 9 Original*, in 1975, having Coordinates of X = 1,939,911.36 and Y = 245,426.62; thence Northwesterly on a straight line to a point having Coordinates of X = 1,937,446 and Y = 246,505; thence Northwesterly along an arc having a radius of 18,240.60 feet and a center located at X = 1,933,172 and Y = 264,238 to a point having Coordinates of X = 1,929,449.80 and Y = 246,381.35; thence North 9,002.81 feet to the point of beginning, containing approximately **2,452.98 acres, LESS AND EXCEPT** that portion thereof, if any, lying seaward of the line three nautical miles from the coast line of Louisiana, as said three mile line has been decreed by the Supreme Court of the United States, as determined by a Special Master appointed therein, in litigation styled **United States v. State of Louisiana et al No. 9 Original**, in 1975, all as more particularly outlined on a plat in the Office of Mineral Resources, Department of Natural Resources. All bearings, distances and coordinates are based on the Louisiana Coordinate System of 1927, (South Zone).

NOTE: The above description of the Tract nominated for lease has been provided and corrected, where required, exclusively by the nomination party. Any mineral lease selected from this Tract and awarded by the Louisiana State Mineral and Energy Board shall be without warranty of any kind, either express, implied, or statutory, including, but not limited to, the implied warranties of merchantability and fitness for a particular purpose. Should the mineral lease awarded by the Louisiana State Mineral and Energy Board be subsequently modified, cancelled or abrogated due to the existence of conflicting leases, operating agreements, private claims or other future obligations or conditions which may affect all or any portion of the leased Tract, it shall not relieve the Lessee of the obligation to pay any bonus due thereon to the Louisiana State Mineral and Energy Board, nor shall the Louisiana State Mineral and Energy Board be obligated to refund any consideration paid by the Lessor prior to such modification, cancellation, or abrogation, including, but not limited to, bonuses, rentals and royalties.

NOTE: The above described tract may be in the vicinity of existing shell reefs where drilling and dredging operations must be conducted in strict conformity with the regulations adopted by the Louisiana Department of Wildlife and Fisheries and/or the U.S. Corps of Engineers, U.S. Army.

NOTE: The State of Louisiana does hereby reserve, and this lease shall be subject to, the imprescriptible right of surface use in the nature of a servitude in favor of the Department of Natural Resources, including its Offices and Commissions, for the sole purpose of implementing, constructing, servicing and maintaining approved coastal zone management and/or restoration projects. Utilization of any and all rights derived under this lease by the mineral lessee, its agents, successors or assigns, shall not interfere with nor hinder the reasonable surface use by the

Department of Natural Resources, its Offices or Commissions, as herein above reserved.

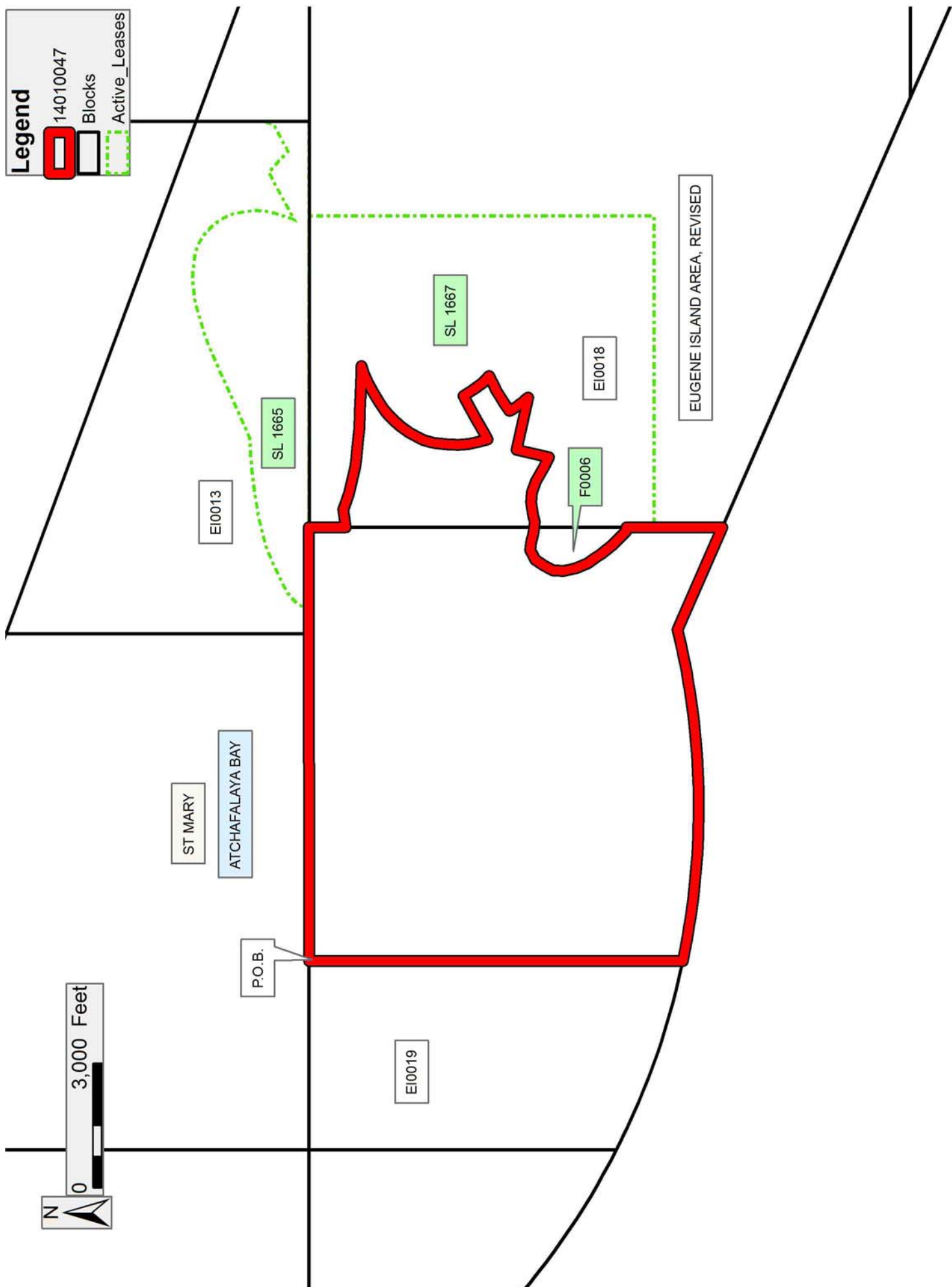
NOTE: This tract is located in an area designated by the Louisiana Legislature or the Wildlife and Fisheries Commission as a Public Oyster Seed Ground, Reservation, or area of Calcasieu or Sabine Lake. Proposed projects occurring in these areas will be evaluated on a case by case basis by Louisiana Department of Wildlife & Fisheries. Modifications to proposed project features including, but not limited to, access routes, well sites, flowlines, and appurtenant structures maybe required by the Louisiana Department of Wildlife and Fisheries. In addition, compensatory mitigation will be required to offset unavoidable habitat impacts.

Applicant: LESLIE M. COOPER

Bidder	Cash Payment	Price/Acre	Rental	Oil	Gas	Other

**Legend**

-  14010047
-  Blocks
-  Active\_Leases





**TRACT 43701 - Portion of Block 121, South Timbalier Area, Revised, Terrebonne Parish, Louisiana**

The beds and bottoms of all water bodies belonging to the State of Louisiana located in Block 121, South Timbalier Area, Revised, together with any present lands formed by accretion to the shoreline or islands formed therein, located in Terrebonne Parish, Louisiana, owned by and not presently under mineral lease as of January 8, 2014, from the State of Louisiana, the geographical area of which is more fully described as follows: Beginning at a point on the Louisiana Coastline, as decreed by the Supreme Court of the United States, as determined by a Special Master appointed therein, in litigation styled *United States v. State of Louisiana et al No. 9 Original*, in 1975, having Coordinates of X = 2,245,721.53 and Y = 152,250.93; thence Northeasterly on a straight line along said Coastline to a point having Coordinates of X = 2,252,000.00 and Y = 153,783.27; thence South 7,406.55 feet to a point within Block 121, South Timbalier Area, Revised, also being a point on the Northern boundary of State Lease No. 21138, having Coordinates of X = 2,252,000.00 and Y = 146,376.72; thence along the boundary of said State Lease No. 21138 the following courses and distances: South 89 degrees 38 minutes 43 seconds West 2,728.55 feet to a point having Coordinates of X = 2,249,271.50 and Y = 146,359.83 and South 1,875.19 feet to its Southwest corner, also being a point on the boundary of State Lease No. 21207, having Coordinates of X = 2,249,271.50 and Y = 144,484.64; thence South 51 degrees 39 minutes 21 seconds East 2,164.20 feet along the boundary of said State Lease No. 21207 to a point on the boundary of State Lease No. 21137, having Coordinates of X = 2,250,968.88 and Y = 143,142.00; thence South 00 degrees 05 minutes 42 seconds East 1,579.66 feet along the West boundary of said State Lease No. 21137 to its Southwest corner having Coordinates of X = 2,250,971.50 and Y = 141,562.34; thence South 89 degrees 54 minutes 14 seconds West 5,249.98 feet to a point having Coordinates of X = 2,245,721.53 and Y = 141,553.53; thence North 10,697.40 feet to the point of beginning, containing approximately **1,438.28 acres**, all as more particularly outlined on a plat on file in the Office of Mineral Resources, Department of Natural Resources. All bearings, distances and coordinates are based on Louisiana Coordinate System of 1927, (North or South Zone).

NOTE: The above description of the Tract nominated for lease has been provided and corrected, where required, exclusively by the nomination party. Any mineral lease selected from this Tract and awarded by the Louisiana State Mineral and Energy Board shall be without warranty of any kind, either express, implied, or statutory, including, but not limited to, the implied warranties of merchantability and fitness for a particular purpose. Should the mineral lease awarded by the Louisiana State Mineral and Energy Board be subsequently modified, cancelled or abrogated due to the existence of conflicting leases, operating agreements, private claims or other future obligations or conditions which may affect all or any portion of the leased Tract, it shall not relieve the Lessee of the obligation to pay any bonus due thereon to the Louisiana State Mineral and

Energy Board, nor shall the Louisiana State Mineral and Energy Board be obligated to refund any consideration paid by the Lessor prior to such modification, cancellation, or abrogation, including, but not limited to, bonuses, rentals and royalties.

NOTE: The State of Louisiana does hereby reserve, and this lease shall be subject to, the imprescriptible right of surface use in the nature of a servitude in favor of the Department of Natural Resources, including its Offices and Commissions, for the sole purpose of implementing, constructing, servicing and maintaining approved coastal zone management and/or restoration projects. Utilization of any and all rights derived under this lease by the mineral lessee, its agents, successors or assigns, shall not interfere with nor hinder the reasonable surface use by the Department of Natural Resources, its Offices or Commissions, as herein above reserved.

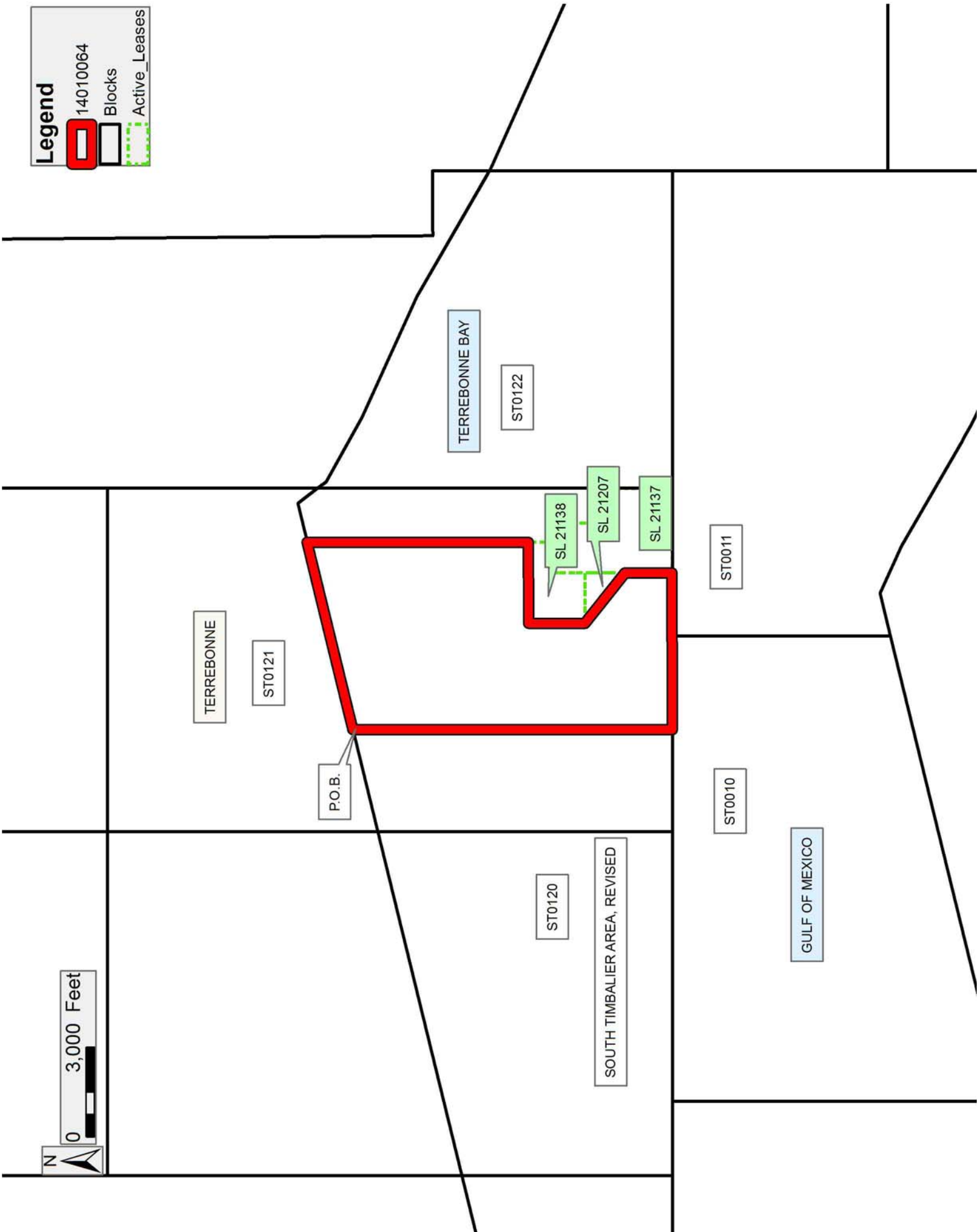
NOTE: It appears, according to our records, that a portion of this Tract is located within the restrictive safety fairway area as set out by the Corps of Engineers, U.S. Army and/or the restrictive anchorage area as set out by the U.S. Coast Guard.

Applicant: THEOPHILUS OIL, GAS & LAND SERVICES, LLC

Bidder	Cash Payment	Price/Acre	Rental	Oil	Gas	Other

**Legend**

-  14010064
-  Blocks
-  Active\_Leases



**TRACT 43702 - Portion of Blocks 120, and 121, South Timbalier Area, Revised, Terrebonne Parish, Louisiana**

The beds and bottoms of all water bodies belonging to the State of Louisiana located in Blocks 120, and 121, South Timbalier Area, Revised, together with any present lands formed by accretion to the shoreline or islands formed therein, located in Terrebonne Parish, Louisiana, owned by and not presently under mineral lease as of January 8, 2014, from the State of Louisiana, the geographical area of which is more fully described as follows: Beginning at a point on the Louisiana Coastline, as decreed by the Supreme Court of the United States, as determined by a Special Master appointed therein, in litigation styled *United States v. State of Louisiana et al No. 9 Original*, in 1975, having Coordinates of X = 2,236,721.53 and Y = 150,054.38; thence Northeasterly on a straight line along said Coastline to a point having Coordinates of X = 2,242,289.88 and Y = 151,413.40; thence Northeasterly on a straight line along said Coastline to a point having Coordinates of X = 2,245,721.53 and Y = 152,250.93; thence South 10,697.40 feet to a point within Block 121, South Timbalier Area, Revised, having Coordinates of X = 2,245,721.53 and Y = 141,553.53; thence West 9,000.00 feet to a point having Coordinates of X = 2,236,721.53 and Y = 141,553.53; thence North 8,500.85 feet to the point of beginning, containing approximately **1,983.29 acres**, all as more particularly outlined on a plat on file in the Office of Mineral Resources, Department of Natural Resources. All bearings, distances and coordinates are based on Louisiana Coordinate System of 1927, (North or South Zone).

NOTE: The above description of the Tract nominated for lease has been provided and corrected, where required, exclusively by the nomination party. Any mineral lease selected from this Tract and awarded by the Louisiana State Mineral and Energy Board shall be without warranty of any kind, either express, implied, or statutory, including, but not limited to, the implied warranties of merchantability and fitness for a particular purpose. Should the mineral lease awarded by the Louisiana State Mineral and Energy Board be subsequently modified, cancelled or abrogated due to the existence of conflicting leases, operating agreements, private claims or other future obligations or conditions which may affect all or any portion of the leased Tract, it shall not relieve the Lessee of the obligation to pay any bonus due thereon to the Louisiana State Mineral and Energy Board, nor shall the Louisiana State Mineral and Energy Board be obligated to refund any consideration paid by the Lessor prior to such modification, cancellation, or abrogation, including, but not limited to, bonuses, rentals and royalties.

NOTE: The State of Louisiana does hereby reserve, and this lease shall be subject to, the imprescriptible right of surface use in the nature of a servitude in favor of the Department of Natural Resources, including its Offices and Commissions, for the sole purpose of implementing, constructing, servicing and maintaining approved coastal zone management and/or restoration projects. Utilization of any and all rights derived

under this lease by the mineral lessee, its agents, successors or assigns, shall not interfere with nor hinder the reasonable surface use by the Department of Natural Resources, its Offices or Commissions, as herein above reserved.

NOTE: It appears, according to our records, that a portion of this Tract is located within the restrictive safety fairway area as set out by the Corps of Engineers, U.S. Army and/or the restrictive anchorage area as set out by the U.S. Coast Guard.

Applicant: THEOPHILUS OIL, GAS & LAND SERVICES, LLC

Bidder	Cash Payment	Price/Acre	Rental	Oil	Gas	Other



**TRACT 43703 - Portion of Blocks 10, 119, 120, and 9, South Timbalier Area, Revised, Terrebonne Parish, Louisiana**

The beds and bottoms of all water bodies belonging to the State of Louisiana located in Blocks 10, 119, 120, and 9, South Timbalier Area, Revised, together with any present lands formed by accretion to the shoreline or islands formed therein, located in Terrebonne Parish, Louisiana, owned by and not presently under mineral lease as of January 8, 2014, from the State of Louisiana, the geographical area of which is more fully described as follows: Beginning at a point on the Louisiana Coastline, as decreed by the Supreme Court of the United States, as determined by a Special Master appointed therein, in litigation styled *United States v. State of Louisiana et al No. 9 Original*, in 1975, having Coordinates of X = 2,226,776.18 and Y = 147,627.11; thence Northeasterly on a straight line along said Coastline to a point having Coordinates of X = 2,236,721.53 and Y = 150,054.38; thence South 10,140.70 feet to a point within Block 10, South Timbalier Area, Revised, having Coordinates of X = 2,236,721.53 and Y = 139,913.68; thence West 9,945.35 feet to a point within Block 9, South Timbalier Area, Revised, having Coordinates of X = 2,226,776.18 and Y = 139,913.68; thence North 2,423.66 feet to a point within Block 119, South Timbalier Area, Revised, also being on the boundary of State Lease No. 21238, also being a point on the boundary of State Lease No. 21239, having Coordinates of X = 2,226,776.18 and Y = 142,337.34; thence along the boundary of said State Lease No. 21238 the following courses and distances: North 54 degrees 22 minutes 09 seconds East 1,968.31 feet to a point having Coordinates of X = 2,228,376.00 and Y = 143,484.00 and North 62 degrees 15 minutes 59 seconds West 1,807.46 feet to a point having Coordinates of X = 2,226,776.18 and Y = 144,325.12; thence North 3,301.99 feet to the point of beginning, containing approximately **2,001.67 acres**, all as more particularly outlined on a plat on file in the Office of Mineral Resources, Department of Natural Resources. All bearings, distances and coordinates are based on Louisiana Coordinate System of 1927, (North or South Zone).

NOTE: The above description of the Tract nominated for lease has been provided and corrected, where required, exclusively by the nomination party. Any mineral lease selected from this Tract and awarded by the Louisiana State Mineral and Energy Board shall be without warranty of any kind, either express, implied, or statutory, including, but not limited to, the implied warranties of merchantability and fitness for a particular purpose. Should the mineral lease awarded by the Louisiana State Mineral and Energy Board be subsequently modified, cancelled or abrogated due to the existence of conflicting leases, operating agreements, private claims or other future obligations or conditions which may affect all or any portion of the leased Tract, it shall not relieve the Lessee of the obligation to pay any bonus due thereon to the Louisiana State Mineral and Energy Board, nor shall the Louisiana State Mineral and Energy Board be obligated to refund any consideration paid by the Lessor prior to such modification, cancellation, or abrogation, including, but not limited to, bonuses, rentals and royalties.

NOTE: The State of Louisiana does hereby reserve, and this lease shall be subject to, the imprescriptible right of surface use in the nature of a servitude in favor of the Department of Natural Resources, including its Offices and Commissions, for the sole purpose of implementing, constructing, servicing and maintaining approved coastal zone management and/or restoration projects. Utilization of any and all rights derived under this lease by the mineral lessee, its agents, successors or assigns, shall not interfere with nor hinder the reasonable surface use by the Department of Natural Resources, its Offices or Commissions, as herein above reserved.

NOTE: It appears, according to our records, that a portion of this Tract is located within the restrictive safety fairway area as set out by the Corps of Engineers, U.S. Army and/or the restrictive anchorage area as set out by the U.S. Coast Guard.

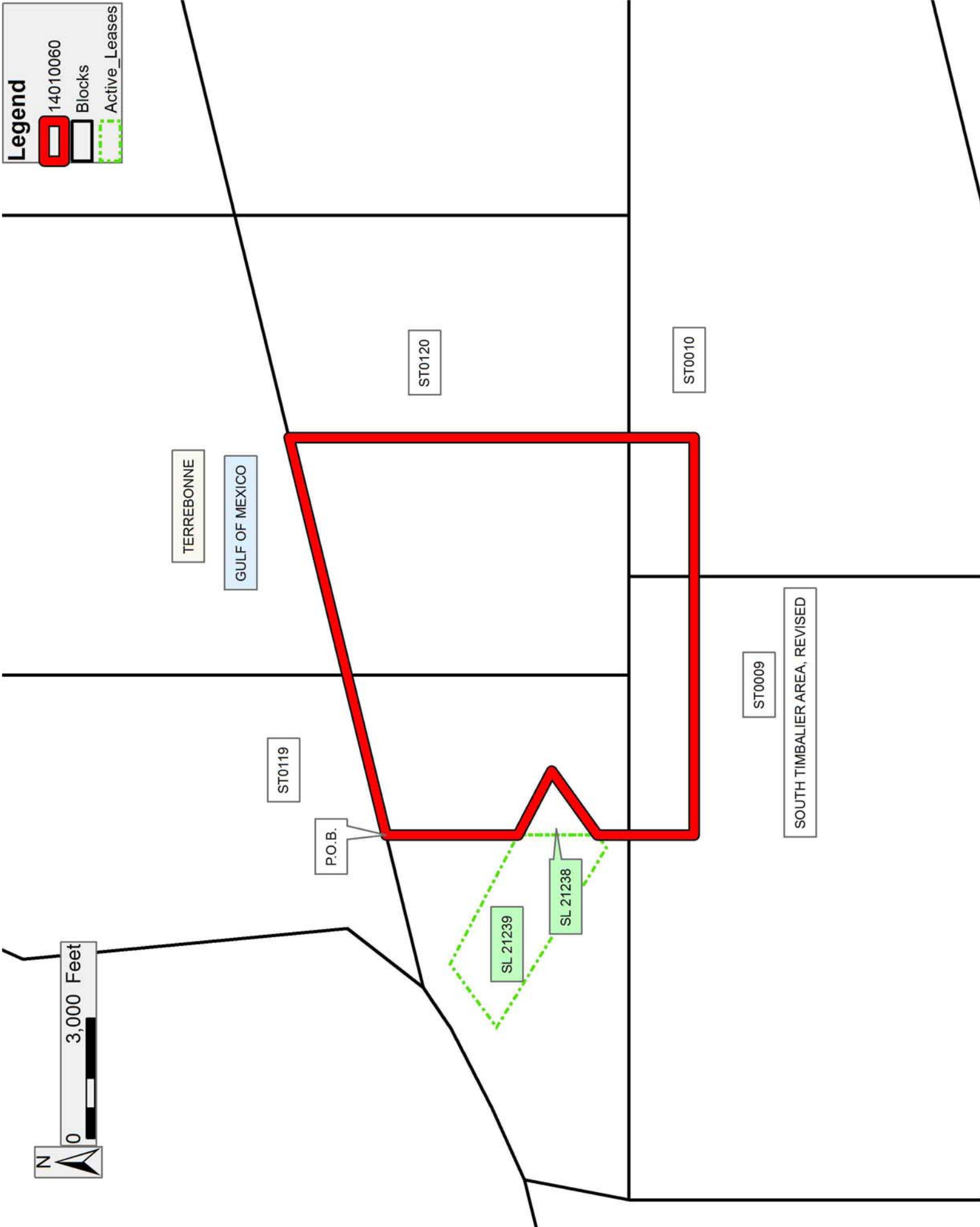
Applicant: THEOPHILUS OIL, GAS & LAND SERVICES, LLC

Bidder	Cash Payment	Price/Acre	Rental	Oil	Gas	Other



**Legend**

- 14010060
- Blocks
- Active\_Leases



**TRACT 43704 - Portion of Blocks 119, 8, and 9, South Timbalier Area, Revised, Terrebonne Parish, Louisiana**

The beds and bottoms of all water bodies belonging to the State of Louisiana located in Blocks 119, 8, and 9, South Timbalier Area, Revised, together with any present lands formed by accretion to the shoreline or islands formed therein, located in Terrebonne Parish, Louisiana, owned by and not presently under mineral lease as of January 8, 2014, from the State of Louisiana, the geographical area of which is more fully described as follows: Beginning at a point on the Louisiana Coastline, as decreed by the Supreme Court of the United States, as determined by a Special Master appointed therein, in litigation styled *United States v. State of Louisiana et al No. 9 Original*, in 1975, having Coordinates of X = 2,217,646.02 and Y = 144,035.68; thence Northeasterly on a straight line along said Coastline to a point having Coordinates of X = 2,218,146 and Y = 144,160; thence Northeasterly on a straight line along said Coastline to a point having Coordinates of X = 2,219,935 and Y = 144,971; thence Northeasterly on a straight line along said Coastline to a point having Coordinates of X = 2,221,937 and Y = 146,004; thence Northeasterly on a straight line along said Coastline to a point having Coordinates of X = 2,222,957 and Y = 146,695; thence Northeasterly on a straight line along said Coastline to a point having Coordinates of X = 2,226,776.18 and Y = 147,627.11; thence South 3,301.99 feet to a point within Block 119, South Timbalier Area, Revised, also being a point on the boundary of State Lease No. 21239, also being a point on the boundary of State Lease No. 21238, having Coordinates of X = 2,226,776.18 and Y = 144,325.12; thence along the boundary of said State Lease No. 21239 the following courses and distances: North 62 degrees 15 minutes 59 seconds West 3,652.81 feet to a point having Coordinates of X = 2,223,543.00 and Y = 146,025.00, South 53 degrees 41 minutes 23 seconds West 1,965.69 feet to a point having Coordinates of X = 2,221,959.00 and Y = 144,861.00, South 58 degrees 33 minutes 40 seconds East 5,274.28 feet to a point having Coordinates of X = 2,226,459.00 and Y = 142,110.00, and North 54 degrees 22 minutes 08 seconds East 390.24 feet to a point having Coordinates of X = 2,226,776.18 and Y = 142,337.34; thence South 2,423.66 feet to a point within Block 9, South Timbalier Area, Revised, having Coordinates of X = 2,226,776.18 and Y = 139,913.68; thence West 1,883.21 feet to a point on the boundary of State Lease No. 15307, as amended, having Coordinates of X = 2,224,892.97 and Y = 139,913.68; thence along the boundary of said State Lease No. 15307, the following courses and distances: North 60 degrees 17 minutes 15 seconds West 1,147.87 feet to a point having Coordinates of X = 2,223,896.02 and Y = 140,482.62, South 68 degrees 30 minutes 25 seconds West 2,057.83 feet to a point having Coordinates of X = 2,221,981.29 and Y = 139,728.66, South 18 degrees 30 minutes 56 seconds East 917.87 feet to a point having Coordinates of X = 2,222,272.77 and Y = 138,858.30 and South 58 degrees 21 minutes 27 seconds West 5,434.68 feet to a point having Coordinates of X = 2,217,646.02 and Y = 136,007.18; thence North 8,028.50 feet to the point of beginning, containing approximately **1,320.01 acres**, all as more particularly outlined on a plat on file in the Office of Mineral Resources, Department of Natural Resources. All bearings,

distances and coordinates are based on Louisiana Coordinate System of 1927, (North or South Zone).

NOTE: The above description of the Tract nominated for lease has been provided and corrected, where required, exclusively by the nomination party. Any mineral lease selected from this Tract and awarded by the Louisiana State Mineral and Energy Board shall be without warranty of any kind, either express, implied, or statutory, including, but not limited to, the implied warranties of merchantability and fitness for a particular purpose. Should the mineral lease awarded by the Louisiana State Mineral and Energy Board be subsequently modified, cancelled or abrogated due to the existence of conflicting leases, operating agreements, private claims or other future obligations or conditions which may affect all or any portion of the leased Tract, it shall not relieve the Lessee of the obligation to pay any bonus due thereon to the Louisiana State Mineral and Energy Board, nor shall the Louisiana State Mineral and Energy Board be obligated to refund any consideration paid by the Lessor prior to such modification, cancellation, or abrogation, including, but not limited to, bonuses, rentals and royalties.

NOTE: The State of Louisiana does hereby reserve, and this lease shall be subject to, the imprescriptible right of surface use in the nature of a servitude in favor of the Department of Natural Resources, including its Offices and Commissions, for the sole purpose of implementing, constructing, servicing and maintaining approved coastal zone management and/or restoration projects. Utilization of any and all rights derived under this lease by the mineral lessee, its agents, successors or assigns, shall not interfere with nor hinder the reasonable surface use by the Department of Natural Resources, its Offices or Commissions, as herein above reserved.

Applicant: THEOPHILUS OIL, GAS & LAND SERVICES, LLC

Bidder	Cash Payment	Price/Acre	Rental	Oil	Gas	Other

**Legend**

- 14010059
- Blocks
- Active\_Leases

