

TRACT 43709 - Concordia Parish, Louisiana

All of the lands now or formerly constituting the beds and bottoms of all water bodies of every nature and description as to which title is vested in the State of Louisiana, together with all islands arising therein and other lands formed by accretion or by reliction, where allowed by law, excepting tax adjudicated lands, and not presently under mineral lease on January 8, 2014, situated in Concordia Parish, Louisiana, and more particularly described as follows: Beginning at a point having Coordinates of X = 2,284,830.80 and Y = 219,000.00; thence East 5,927.73 feet to a point having Coordinates of X = 2,290,758.53 and Y = 219,000.00; thence South 3,000.00 feet to a point having Coordinates of X = 2,290,758.53 and Y = 216,000.00; thence West 5,927.73 feet to a point having Coordinates of X = 2,284,830.80 and Y = 216,000.00; thence North 3,000.00 feet to the point of beginning, **LESS AND EXCEPT** any portion of the above described tract that falls within the State of Mississippi, containing approximately **180 acres**, all as more particularly outlined on a plat on file in the Office of Mineral Resources, Department of Natural Resources. All bearings, distances and coordinates are based on Louisiana Coordinate System of 1927, (North or South Zone), where applicable.

NOTE: The above description of the Tract nominated for lease has been provided and corrected, where required, exclusively by the nomination party. Any mineral lease selected from this Tract and awarded by the Louisiana State Mineral and Energy Board shall be without warranty of any kind, either express, implied, or statutory, including, but not limited to, the implied warranties of merchantability and fitness for a particular purpose. Should the mineral lease awarded by the Louisiana State Mineral and Energy Board be subsequently modified, cancelled or abrogated due to the existence of conflicting leases, operating agreements, private claims or other future obligations or conditions which may affect all or any portion of the leased Tract, it shall not relieve the Lessee of the obligation to pay any bonus due thereon to the Louisiana State Mineral and Energy Board, nor shall the Louisiana State Mineral and Energy Board be obligated to refund any consideration paid by the Lessor prior to such modification, cancellation, or abrogation, including, but not limited to, bonuses, rentals and royalties.

Applicant: BARKER ENERGY

Bidder	Cash Payment	Price/Acre	Rental	Oil	Gas	Other

Legend

14010013

Active_Leases



MISSISSIPPI RIVER

T3N - R4W

CONCORDIA

T3N - R5W

P.O.B.



2,000 Feet



TRACT 43710 - Jefferson Davis Parish, Louisiana

All of the lands now or formerly constituting the beds and bottoms of all water bodies of every nature and description as to which title is vested in the State of Louisiana, together with all islands arising therein and other lands formed by accretion or by reliction, where allowed by law, excepting tax adjudicated lands, and not presently under mineral lease on January 8, 2014, situated in Jefferson Davis Parish, Louisiana, and more particularly described as follows: Beginning at a point having Coordinates of X = 1,462,086.00 and Y = 643,147.00; thence East 4,992.00 feet to a point having Coordinates of X = 1,467,078.00 and Y = 643,147.00; thence South 3,461.00 feet to a point having Coordinates of X = 1,467,078.00 and Y = 639,686.00; thence West 4,992.00 feet to a point having Coordinates of X = 1,462,086.00 and Y = 639,686.00; thence North 3,461.00 feet to the point of beginning, containing approximately **25 acres**, all as more particularly outlined on a plat on file in the Office of Mineral Resources, Department of Natural Resources. All bearings, distances and coordinates are based on Louisiana Coordinate System of 1927, (North or South Zone), where applicable.

NOTE: The above description of the Tract nominated for lease has been provided and corrected, where required, exclusively by the nomination party. Any mineral lease selected from this Tract and awarded by the Louisiana State Mineral and Energy Board shall be without warranty of any kind, either express, implied, or statutory, including, but not limited to, the implied warranties of merchantability and fitness for a particular purpose. Should the mineral lease awarded by the Louisiana State Mineral and Energy Board be subsequently modified, cancelled or abrogated due to the existence of conflicting leases, operating agreements, private claims or other future obligations or conditions which may affect all or any portion of the leased Tract, it shall not relieve the Lessee of the obligation to pay any bonus due thereon to the Louisiana State Mineral and Energy Board, nor shall the Louisiana State Mineral and Energy Board be obligated to refund any consideration paid by the Lessor prior to such modification, cancellation, or abrogation, including, but not limited to, bonuses, rentals and royalties.

NOTE: A portion of this tract is located on or adjacent to a Louisiana designated Natural and Scenic River. The applicant must obtain authorization from the Louisiana Department of Wildlife and Fisheries, Scenic Rivers Program prior to initiating any activities within or adjacent to the river, including, but not limited to, crossings by roads and pipelines, well sites, production facilities and water withdrawals.

Applicant: SOUTHERN OIL & GAS COMPANY, INC.

Bidder	Cash Payment	Price/Acre	Rental	Oil	Gas	Other

Legend

14010011



Active_Leases



2,000 Feet

0

CALCASIEU RIVER

JEFFERSON DAVIS

T7S - R6W

T7S - R7W

P.O.B.



TRACT 43711 - Jefferson Davis Parish, Louisiana

All of the lands now or formerly constituting the beds and bottoms of all water bodies of every nature and description as to which title is vested in the State of Louisiana, together with all islands arising therein and other lands formed by accretion or by reliction, where allowed by law, excepting tax adjudicated lands, and not presently under mineral lease on January 8, 2014, situated in Jefferson Davis Parish, Louisiana, and more particularly described as follows: Beginning at a point having Coordinates of X = 1,457,109.00 and Y = 641,189.00; thence East 4,977.00 feet to a point having Coordinates of X = 1,462,086.00 and Y = 641,189.00; thence South 3,749.00 feet to a point having Coordinates of X = 1,462,086.00 and Y = 637,440.00; thence West 4,977.00 feet to a point having Coordinates of X = 1,457,109.00 and Y = 637,440.00; thence North 3,749.00 feet to the point of beginning, (This tract includes only waterbottoms claimed and owned by the state and specifically excludes any land which the state may claim or own and to which the mineral rights are vested in the state), containing approximately **32 acres**, all as more particularly outlined on a plat on file in the Office of Mineral Resources, Department of Natural Resources. All bearings, distances and coordinates are based on Louisiana Coordinate System of 1927, (North or South Zone), where applicable.

NOTE: The above description of the Tract nominated for lease has been provided and corrected, where required, exclusively by the nomination party. Any mineral lease selected from this Tract and awarded by the Louisiana State Mineral and Energy Board shall be without warranty of any kind, either express, implied, or statutory, including, but not limited to, the implied warranties of merchantability and fitness for a particular purpose. Should the mineral lease awarded by the Louisiana State Mineral and Energy Board be subsequently modified, cancelled or abrogated due to the existence of conflicting leases, operating agreements, private claims or other future obligations or conditions which may affect all or any portion of the leased Tract, it shall not relieve the Lessee of the obligation to pay any bonus due thereon to the Louisiana State Mineral and Energy Board, nor shall the Louisiana State Mineral and Energy Board be obligated to refund any consideration paid by the Lessor prior to such modification, cancellation, or abrogation, including, but not limited to, bonuses, rentals and royalties.

NOTE: A portion of this tract is located on or adjacent to a Louisiana designated Natural and Scenic River. The applicant must obtain authorization from the Louisiana Department of Wildlife and Fisheries, Scenic Rivers Program prior to initiating any activities within or adjacent to the river, including, but not limited to, crossings by roads and pipelines, well sites, production facilities and water withdrawals.

Applicant: SOUTHERN OIL & GAS COMPANY, INC.

Bidder	Cash Payment	Price/Acre	Rental	Oil	Gas	Other

Legend

14010012



T7S - R6W

CALCASIEU RIVER

JEFFERSON DAVIS

T7S - R7W

P.O.B.



0 2,000 Feet

TRACT 43712 - Jefferson Davis Parish, Louisiana

All of the lands now or formerly constituting the beds and bottoms of all water bodies of every nature and description as to which title is vested in the State of Louisiana, together with all islands arising therein and other lands formed by accretion or by reliction, where allowed by law, excepting tax adjudicated lands, and not presently under mineral lease on January 8, 2014, situated in Jefferson Davis Parish, Louisiana, and more particularly described as follows: Beginning at a point having Coordinates of X = 1,454,182.00 and Y = 637,440.00; thence East 5,096.00 feet to a point having Coordinates of X = 1,459,278.00 and Y = 637,440.00; thence South 3,680.00 feet to a point having Coordinates of X = 1,459,278.00 and Y = 633,760.00; thence West 5,096.00 feet to a point having Coordinates of X = 1,454,182.00 and Y = 633,760.00; thence North 3,680.00 feet to the point of beginning, (This tract includes only waterbottoms claimed and owned by the state and specifically excludes any land which the state may claim or own and to which the mineral rights are vested in the state), containing approximately **18 acres**, all as more particularly outlined on a plat on file in the Office of Mineral Resources, Department of Natural Resources. All bearings, distances and coordinates are based on Louisiana Coordinate System of 1927, (North or South Zone), where applicable.

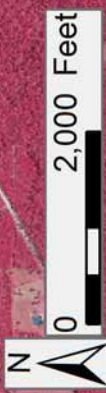
NOTE: The above description of the Tract nominated for lease has been provided and corrected, where required, exclusively by the nomination party. Any mineral lease selected from this Tract and awarded by the Louisiana State Mineral and Energy Board shall be without warranty of any kind, either express, implied, or statutory, including, but not limited to, the implied warranties of merchantability and fitness for a particular purpose. Should the mineral lease awarded by the Louisiana State Mineral and Energy Board be subsequently modified, cancelled or abrogated due to the existence of conflicting leases, operating agreements, private claims or other future obligations or conditions which may affect all or any portion of the leased Tract, it shall not relieve the Lessee of the obligation to pay any bonus due thereon to the Louisiana State Mineral and Energy Board, nor shall the Louisiana State Mineral and Energy Board be obligated to refund any consideration paid by the Lessor prior to such modification, cancellation, or abrogation, including, but not limited to, bonuses, rentals and royalties.

NOTE: A portion of this tract is located on or adjacent to a Louisiana designated Natural and Scenic River. The applicant must obtain authorization from the Louisiana Department of Wildlife and Fisheries, Scenic Rivers Program prior to initiating any activities within or adjacent to the river, including, but not limited to, crossings by roads and pipelines, well sites, production facilities and water withdrawals.

Applicant: SOUTHERN OIL & GAS COMPANY, INC.

Bidder	Cash Payment	Price/Acre	Rental	Oil	Gas	Other

Legend
14010010



JEFFERSON DAVIS

T7S - R7W

CALCASIEU RIVER

P.O.B.



TRACT 43713 - Jefferson and St. Charles Parishes, Louisiana

All of the lands now or formerly constituting the beds and bottoms of all water bodies of every nature and description as to which title is vested in the State of Louisiana, together with all islands arising therein and other lands formed by accretion or by reliction, where allowed by law, excepting tax adjudicated lands, and not presently under mineral lease on January 8, 2014, situated in Jefferson and St. Charles Parishes, Louisiana, and more particularly described as follows: Beginning at a point having Coordinates of X = 2,353,016.00 and Y = 402,155.00; thence East 5,790.49 feet to a point on the West boundary of State Lease No. 17140 having Coordinates of X = 2,358,806.40 and Y = 402,155.00; thence along the boundaries of said State Lease No. 17140 the following courses: South 1,249.72 feet to a point having Coordinates of X = 2,358,806.49 and Y = 400,905.28 and East 4,361.09 feet to a point having Coordinates of X = 2,363,167.58 and Y = 400,905.28; thence South 9,330.55 feet to a point having Coordinates of X = 2,363,167.58 and Y = 391,574.73; thence West 10,151.58 feet to a point having Coordinates of X = 2,353,016.00 and Y = 391,574.73; thence North 10,580.27 feet to the point of beginning, containing approximately **2340.59 acres**, all as more particularly outlined on a plat on file in the Office of Mineral Resources, Department of Natural Resources. All bearings, distances and coordinates are based on Louisiana Coordinate System of 1927, (North or South Zone), where applicable.

NOTE: The above description of the Tract nominated for lease has been provided and corrected, where required, exclusively by the nomination party. Any mineral lease selected from this Tract and awarded by the Louisiana State Mineral and Energy Board shall be without warranty of any kind, either express, implied, or statutory, including, but not limited to, the implied warranties of merchantability and fitness for a particular purpose. Should the mineral lease awarded by the Louisiana State Mineral and Energy Board be subsequently modified, cancelled or abrogated due to the existence of conflicting leases, operating agreements, private claims or other future obligations or conditions which may affect all or any portion of the leased Tract, it shall not relieve the Lessee of the obligation to pay any bonus due thereon to the Louisiana State Mineral and Energy Board, nor shall the Louisiana State Mineral and Energy Board be obligated to refund any consideration paid by the Lessor prior to such modification, cancellation, or abrogation, including, but not limited to, bonuses, rentals and royalties.

NOTE: The State of Louisiana does hereby reserve, and this lease shall be subject to, the imprescriptible right of surface use in the nature of a servitude in favor of the Department of Natural Resources, including its Offices and Commissions, for the sole purpose of implementing, constructing, servicing and maintaining approved coastal zone management and/or restoration projects. Utilization of any and all rights derived under this lease by the mineral lessee, its agents, successors or assigns, shall not interfere with nor hinder the reasonable surface use by the

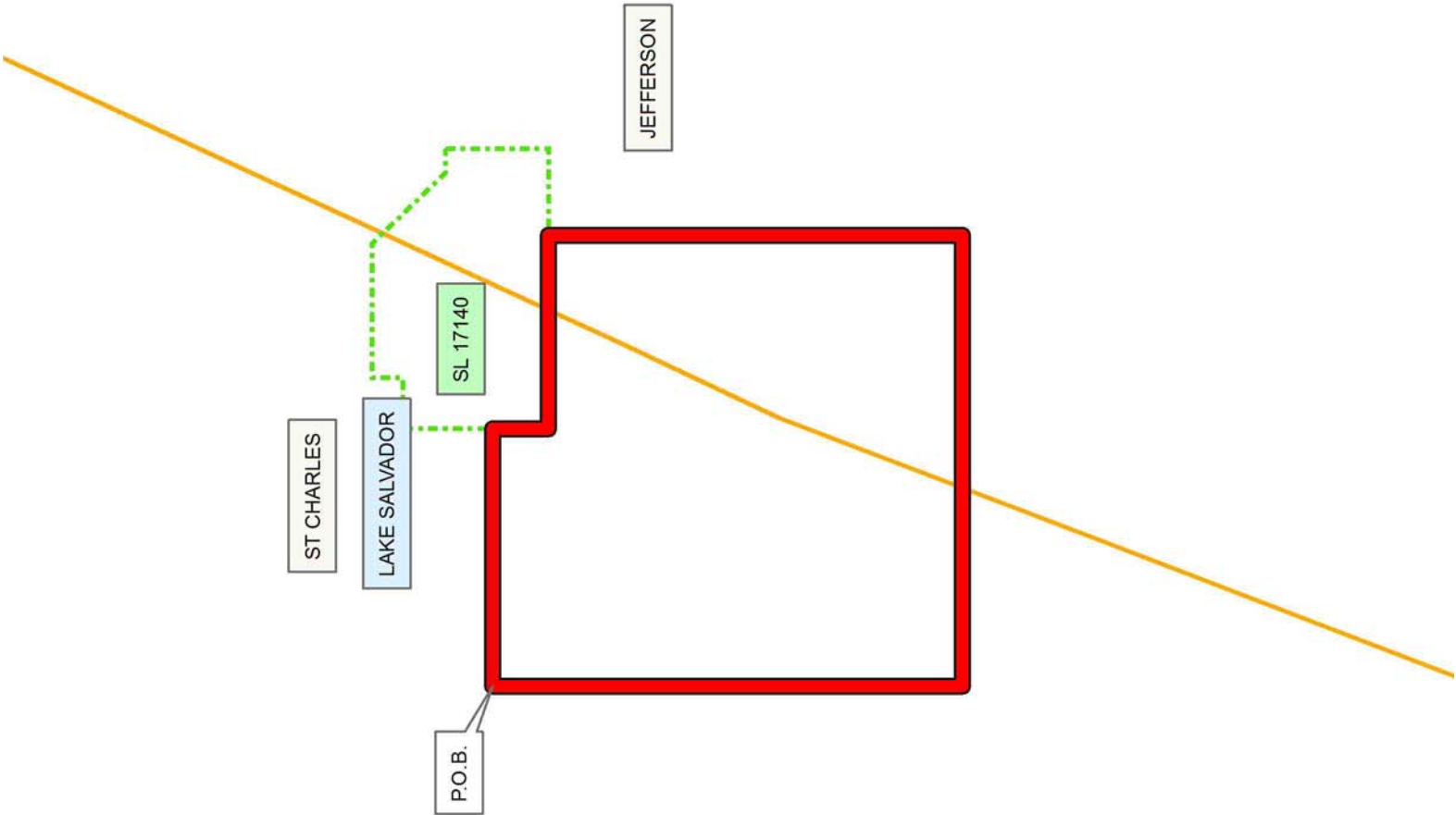
Department of Natural Resources, its Offices or Commissions, as herein above reserved.

Applicant: SOUTHLAND OIL PROPERTIES, INC.

Bidder	Cash Payment	Price/Acre	Rental	Oil	Gas	Other

Legend

- 14010024
- Active_Leases
- Counties



TRACT 43714 - Jefferson and St. Charles Parishes, Louisiana

All of the lands now or formerly constituting the beds and bottoms of all water bodies of every nature and description as to which title is vested in the State of Louisiana, together with all islands arising therein and other lands formed by accretion or by reliction, where allowed by law, excepting tax adjudicated lands, and not presently under mineral lease on January 8, 2014, situated in Jefferson and St. Charles Parishes, Louisiana, and more particularly described as follows: Beginning at a point having Coordinates of X = 2,353,016.00 and Y = 391,574.73; thence East 10,151.58 feet to a point having Coordinates of X = 2,363,167.58 and Y = 391,574.73; thence South 7,415.14 feet to a point having Coordinates of X = 2,363,167.58 and Y = 384,159.59; thence West 12,424.39 feet to a point having Coordinates of X = 2,350,743.18 and Y = 384,159.59; thence North 00 degree 19 minutes 47 seconds West 5,375.43 feet to a point having Coordinates of X = 2,350,712.26 and Y = 389,534.93; thence East 2,303.74 feet to a point having Coordinates of X = 2,353,016.00 and Y = 389,534.93; thence North 2,039.80 feet to the point of beginning, containing approximately **2,010.46 acres**, all as more particularly outlined on a plat on file in the Office of Mineral Resources, Department of Natural Resources. All bearings, distances and coordinates are based on Louisiana Coordinate System of 1927, (North or South Zone), where applicable.

NOTE: The above description of the Tract nominated for lease has been provided and corrected, where required, exclusively by the nomination party. Any mineral lease selected from this Tract and awarded by the Louisiana State Mineral and Energy Board shall be without warranty of any kind, either express, implied, or statutory, including, but not limited to, the implied warranties of merchantability and fitness for a particular purpose. Should the mineral lease awarded by the Louisiana State Mineral and Energy Board be subsequently modified, cancelled or abrogated due to the existence of conflicting leases, operating agreements, private claims or other future obligations or conditions which may affect all or any portion of the leased Tract, it shall not relieve the Lessee of the obligation to pay any bonus due thereon to the Louisiana State Mineral and Energy Board, nor shall the Louisiana State Mineral and Energy Board be obligated to refund any consideration paid by the Lessor prior to such modification, cancellation, or abrogation, including, but not limited to, bonuses, rentals and royalties.

NOTE: The State of Louisiana does hereby reserve, and this lease shall be subject to, the imprescriptible right of surface use in the nature of a servitude in favor of the Department of Natural Resources, including its Offices and Commissions, for the sole purpose of implementing, constructing, servicing and maintaining approved coastal zone management and/or restoration projects. Utilization of any and all rights derived under this lease by the mineral lessee, its agents, successors or assigns, shall not interfere with nor hinder the reasonable surface use by the Department of Natural Resources, its Offices or Commissions, as herein above reserved.

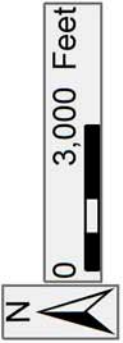
Applicant: SOUTHLAND OIL PROPERTIES, INC.

Bidder	Cash Payment	Price/Acre	Rental	Oil	Gas	Other

Legend

14010025

Counties

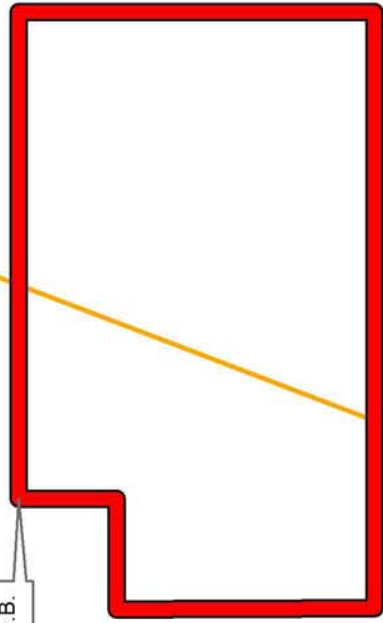


JEFFERSON

LAKE SALVADOR

ST CHARLES

P.O.B.



TRACT 43715 - Lafourche and St. Charles Parishes, Louisiana

All of the lands now or formerly constituting the beds and bottoms of all water bodies of every nature and description as to which title is vested in the State of Louisiana, together with all islands arising therein and other lands formed by accretion or by reliction, where allowed by law, excepting tax adjudicated lands, and not presently under mineral lease on January 8, 2014, situated in Lafourche and St. Charles Parishes, Louisiana, and more particularly described as follows: Beginning at a point having Coordinates of X= 2,338,135.00 and Y= 389,103.31; thence North 87 degrees 42 minutes 11 seconds East 10,769.91 feet to a point having coordinates of X = 2,348,896.26 and Y = 389,534.93; thence East 1,816.00 feet to a point having Coordinates of X = 2,3507,12.26 and Y = 389,534.93; thence South 00 degrees 19 minutes 47 seconds East 16,235.20 feet to a point having Coordinates of X = 2,350,805.65 and Y = 373,300.00; thence West 5,295.65 feet to the Southeast corner of State Lease No. 19232 having Coordinates of X = 2,345,510.00 and Y = 373,300.00; thence North 7,622.61 feet along the East boundary of said State Lease No. 19232 to the Southeast corner of State Lease No. 19204 having Coordinates of X = 2,345,510.00 and Y = 380,922.61; thence continue North 1,023.13 feet along the East boundary of said State Lease No. 19204 to its Northeast corner also being the Southeast corner of State Lease No. 19203 having Coordinates of X = 2,345,510.00 and Y = 381,945.74; thence continue North 1,807.05 feet along the East boundary of said State Lease No. 19203 to its Northeast corner also a point on the East boundary of said State Lease No. 19232 having Coordinates of X = 2,345,510.00 and Y = 383,752.79; thence along the boundaries of said State Lease No. 19232 the following courses: North 1,355.21 feet to a point having Coordinates of X = 2,345,510.00 and Y = 385,108.00 and West 6,418.50 feet to a point having Coordinates of X = 2,339,091.50 and Y = 385,108.00; thence South 72 degrees 05 minutes 07 seconds West 1,005.24 feet to a point having Coordinates of X = 2,338,135.00 and Y = 384,798.79; thence North 4,304.52 feet to the point of beginning, **LESS AND EXCEPT** all that portion of State Lease No. 20854 which lies entirely within the above described tract, being more fully described as follows: Commencing at a point being the point of beginning of the above described tract having Coordinates of X = 2,338,135.00 and Y = 389,103.31; thence South 76 degrees 15 minutes 07 seconds East 5,936.91 feet to a point having Coordinates of X = 2,343,901.81 and Y = 387,692.38, being the point of beginning of said State Lease No. 20854; thence South 89 degrees 37 minutes 16 seconds East 2,964.40 feet to a point having Coordinates of X = 2,346,866.15 and Y = 387,672.78; thence South 00 degrees 12 minutes 31 seconds East 2,307.78 feet to a point having Coordinates of X = 2,346,874.54 and Y = 385,365.01; thence North 89 degrees 21 minutes 50 seconds West 2,963.11 feet to a point having Coordinates of X = 2,343,911.61 and Y = 385,397.91; thence North 00 degrees 14 minutes 41 seconds West 2,294.49 feet to a point of beginning, the nominated tract containing approximately **2,499.34 acres**, all as more particularly

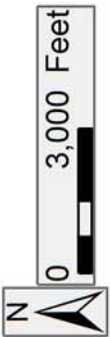
outlined on a plat on file in the Office of Mineral Resources, Department of Natural Resources. All bearings, distances and coordinates are based on Louisiana Coordinate System of 1927, (North or South Zone), where applicable.

NOTE: The above description of the Tract nominated for lease has been provided and corrected, where required, exclusively by the nomination party. Any mineral lease selected from this Tract and awarded by the Louisiana State Mineral and Energy Board shall be without warranty of any kind, either express, implied, or statutory, including, but not limited to, the implied warranties of merchantability and fitness for a particular purpose. Should the mineral lease awarded by the Louisiana State Mineral and Energy Board be subsequently modified, cancelled or abrogated due to the existence of conflicting leases, operating agreements, private claims or other future obligations or conditions which may affect all or any portion of the leased Tract, it shall not relieve the Lessee of the obligation to pay any bonus due thereon to the Louisiana State Mineral and Energy Board, nor shall the Louisiana State Mineral and Energy Board be obligated to refund any consideration paid by the Lessor prior to such modification, cancellation, or abrogation, including, but not limited to, bonuses, rentals and royalties.

NOTE: The State of Louisiana does hereby reserve, and this lease shall be subject to, the imprescriptible right of surface use in the nature of a servitude in favor of the Department of Natural Resources, including its Offices and Commissions, for the sole purpose of implementing, constructing, servicing and maintaining approved coastal zone management and/or restoration projects. Utilization of any and all rights derived under this lease by the mineral lessee, its agents, successors or assigns, shall not interfere with nor hinder the reasonable surface use by the Department of Natural Resources, its Offices or Commissions, as herein above reserved.

Applicant: SOUTHLAND OIL PROPERTIES, INC.

Bidder	Cash Payment	Price/Acre	Rental	Oil	Gas	Other



Legend



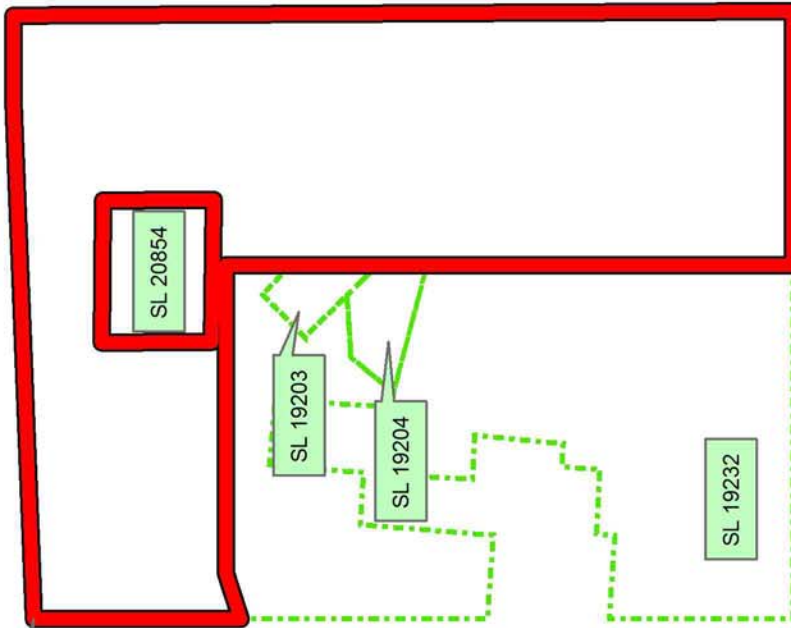
14010023

Active_Leases

ST CHARLES

LAKE SALVADOR

P.O.B.



TRACT 43716 - St. Charles Parish, Louisiana

All of the lands now or formerly constituting the beds and bottoms of all water bodies of every nature and description as to which title is vested in the State of Louisiana, together with all islands arising therein and other lands formed by accretion or by reliction, where allowed by law, excepting tax adjudicated lands, and not presently under mineral lease on January 8, 2014, situated in St. Charles Parish, Louisiana, and more particularly described as follows: Beginning at a point having Coordinates of X = 2,327,273.03 and Y = 388,667.65; thence North 87 degrees 42 minutes 11 seconds East 10,870.71 feet to a point having Coordinates of X = 2,338,135.00 and Y = 389,103.31; thence South 4,304.52 feet to the Northwest corner of State Lease No. 19232 having Coordinates of X = 2,338,135.00 and Y = 384,798.79; thence South 5,133.56 feet along the Western boundary of said State Lease No. 19232 to the Northwest corner of State Lease No. 19206 having Coordinates of X = 2,338,135.00 and Y = 379,665.23; thence South 2,539.43 feet along the west boundary of said State Lease No. 19206 to its Southwest corner and the Northeast corner of State Lease No. 20851 having Coordinates of X = 2,338,135.00 and Y = 377,125.80; thence along the boundaries of said State Lease No. 20851 the following courses: North 86 degrees 12 minutes 04 seconds West 410.85 feet to a point having Coordinates of X = 2,337,725.05 and Y = 377,153.02, North 03 degrees 56 minutes 50 seconds East 1,400.30 feet to a point having Coordinates of X = 2,337,821.44 and Y = 378,550.00 and West 2,623.62 feet to its Northwest corner also being a point on the East boundary of State Lease No. 19201 having Coordinates of X = 2,335,197.82 and Y = 378,550.00; thence along the boundaries of said State Lease No. 19201 the following courses: North 20 degrees 42 minutes 16 seconds West 1,880.44 feet to a point having Coordinates of X = 2,334,533.00 and Y = 380,309.00, and South 71 degrees 21 minutes 39 seconds West 1,720.23 feet to a point on the East boundary of State Lease No. 20852 having Coordinates of X = 2,332,903.00 and Y = 379,759.20; thence North 743.80 feet to a point having Coordinates of X = 2,332,903.00 and Y = 380,503.00, and West 1,838.95 feet to a point on the East boundary of State Lease No. 20626 having Coordinates of X = 2,331,064.05 and Y = 380,503.00; thence North 00 degrees 52 minutes 42 seconds West 2,820.39 feet along the East boundary of said State Lease No. 20626 to its Northeast corner, also being a point on the South boundary of State Lease No. 20853 having Coordinates of X = 2,331,020.82 and Y = 383,323.06; thence along the boundaries of said State Lease No. 20853 the following courses: North 80 degrees 42 minutes 32 seconds East 845.27 feet to a point having Coordinates of X = 2,331,855.00 and Y = 383,459.53, North 1,906.47 feet to a point having Coordinates of X = 2,331,855.00 and Y = 385,366.00, West 2,213.00 feet to a point having Coordinates of X = 2,329,642.00 and Y = 385,366.00, and South 2,268.51 feet to its Southwest corner, also being a point on the North boundary of said State Lease No. 20626 having Coordinates of X = 2,329,642.00 and Y = 383,097.49; thence South 80 degrees 42 minutes 32 seconds West 2,400.47 feet along the North boundary of said State Lease No. 20626 to a point having Coordinates of X = 2,327,273.03 and Y = 382,709.93, said point also being the Southeast corner of State Lease No.

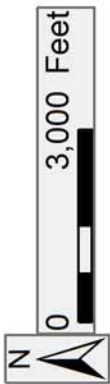
21281; thence North 1,072.07 feet along the Eastern boundary of said State Lease No. 21281 to a point being its Northeast corner having Coordinates of X = 2,327,273.03 and Y = 383,782.00, said point also being the Southeast corner of State Lease No. 21280; thence North 2,710.34 feet along the Eastern boundary of said State Lease No. 21280 to a point being its Northeast corner having Coordinates of X = 2,327,273.03 and Y = 386,492.34; thence North 2,175.31 feet to the point of beginning containing, approximately **1943.87 acres**, all as more particularly outlined on a plat on file in the Office of Mineral Resources, Department of Natural Resources. All bearings, distances and coordinates are based on Louisiana Coordinate System of 1927, (North or South Zone), where applicable.

NOTE: The above description of the Tract nominated for lease has been provided and corrected, where required, exclusively by the nomination party. Any mineral lease selected from this Tract and awarded by the Louisiana State Mineral and Energy Board shall be without warranty of any kind, either express, implied, or statutory, including, but not limited to, the implied warranties of merchantability and fitness for a particular purpose. Should the mineral lease awarded by the Louisiana State Mineral and Energy Board be subsequently modified, cancelled or abrogated due to the existence of conflicting leases, operating agreements, private claims or other future obligations or conditions which may affect all or any portion of the leased Tract, it shall not relieve the Lessee of the obligation to pay any bonus due thereon to the Louisiana State Mineral and Energy Board, nor shall the Louisiana State Mineral and Energy Board be obligated to refund any consideration paid by the Lessor prior to such modification, cancellation, or abrogation, including, but not limited to, bonuses, rentals and royalties.

NOTE: The State of Louisiana does hereby reserve, and this lease shall be subject to, the imprescriptible right of surface use in the nature of a servitude in favor of the Department of Natural Resources, including its Offices and Commissions, for the sole purpose of implementing, constructing, servicing and maintaining approved coastal zone management and/or restoration projects. Utilization of any and all rights derived under this lease by the mineral lessee, its agents, successors or assigns, shall not interfere with nor hinder the reasonable surface use by the Department of Natural Resources, its Offices or Commissions, as herein above reserved.

Applicant: SOUTHLAND OIL PROPERTIES, INC.

Bidder	Cash Payment	Price/Acre	Rental	Oil	Gas	Other



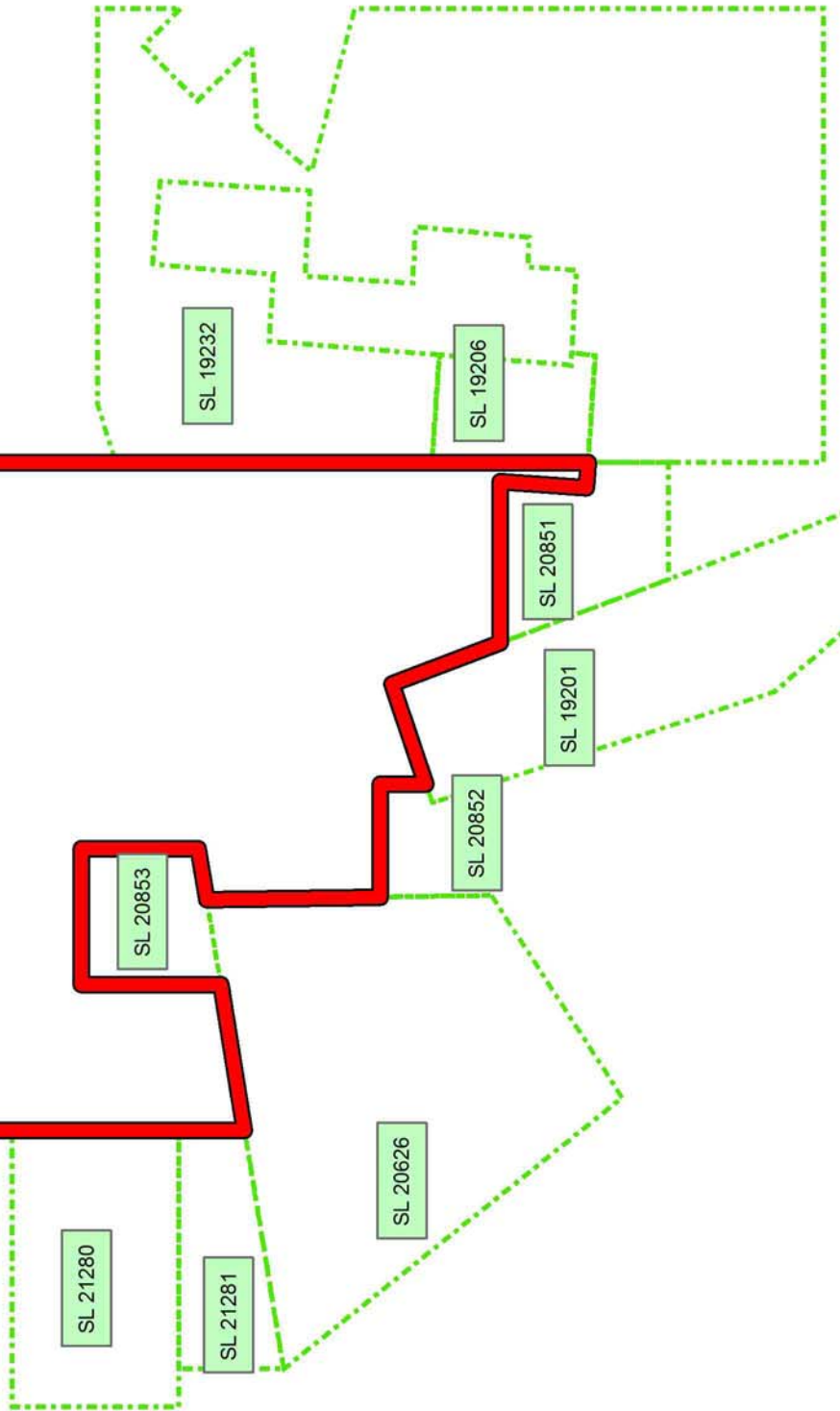
Legend

- 14010022
- Active_Leases

ST CHARLES

LAKE SALVADOR

P.O.B.



TRACT 43717 - St. Charles Parish, Louisiana

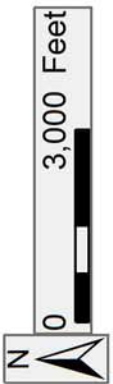
All of the lands now or formerly constituting the beds and bottoms of all water bodies of every nature and description as to which title is vested in the State of Louisiana, together with all islands arising therein and other lands formed by accretion or by reliction, where allowed by law, excepting tax adjudicated lands, and not presently under mineral lease on January 8, 2014, situated in St. Charles Parish, Louisiana, and more particularly described as follows: Beginning at a point having Coordinates of X = 2,320,876.93 and Y = 388,411.11; thence North 87 degrees 42 minutes 11 seconds East 6,401.24 feet to a point having Coordinates of X = 2,327,273.03 and Y = 388,667.65; thence South 2,175.31 feet to the Northeast corner of State Lease No. 21280 having Coordinates of X = 2,327,273.03 and Y = 386,492.34; thence along the boundaries of said State Lease No. 21280 the following courses: West 4,500.62 feet to a point having Coordinates of X = 2,322,772.41 and Y = 386,492.34 and South 2,710.34 feet to its Southwest corner and a point on the north boundary of State Lease No. 21183 having Coordinates of X = 2,322,772.41 and Y = 383,782.00; thence West 4,940.41 feet along the north boundary of said State Lease No. 21183 to its Northwest corner and the Northeast corner of State Lease No. 21282 having Coordinates of X = 2,317,832.00 and Y = 383,782.00; thence continue West 4,874.37 feet along the north boundary of said State Lease No. 21282 to its Northwest corner having Coordinates of X = 2,312,957.63 and Y = 383,782.00; thence North 316.54 feet to a point having Coordinates of X = 2,312,957.63 and Y = 384,098.54; thence East 79.60 feet to a point having Coordinates of X = 2,313,037.23 and Y = 384,098.54; thence North 61 degrees 11 minutes 06 seconds East 8,947.58 feet to the point of beginning, containing approximately **864.14 acres**, all as more particularly outlined on a plat on file in the Office of Mineral Resources, Department of Natural Resources. All bearings, distances and coordinates are based on Louisiana Coordinate System of 1927, (North or South Zone), where applicable.

NOTE: The above description of the Tract nominated for lease has been provided and corrected, where required, exclusively by the nomination party. Any mineral lease selected from this Tract and awarded by the Louisiana State Mineral and Energy Board shall be without warranty of any kind, either express, implied, or statutory, including, but not limited to, the implied warranties of merchantability and fitness for a particular purpose. Should the mineral lease awarded by the Louisiana State Mineral and Energy Board be subsequently modified, cancelled or abrogated due to the existence of conflicting leases, operating agreements, private claims or other future obligations or conditions which may affect all or any portion of the leased Tract, it shall not relieve the Lessee of the obligation to pay any bonus due thereon to the Louisiana State Mineral and Energy Board, nor shall the Louisiana State Mineral and Energy Board be obligated to refund any consideration paid by the Lessor prior to such modification, cancellation, or abrogation, including, but not limited to, bonuses, rentals and royalties.

NOTE: The State of Louisiana does hereby reserve, and this lease shall be subject to, the imprescriptible right of surface use in the nature of a servitude in favor of the Department of Natural Resources, including its Offices and Commissions, for the sole purpose of implementing, constructing, servicing and maintaining approved coastal zone management and/or restoration projects. Utilization of any and all rights derived under this lease by the mineral lessee, its agents, successors or assigns, shall not interfere with nor hinder the reasonable surface use by the Department of Natural Resources, its Offices or Commissions, as herein above reserved.

Applicant: SOUTHLAND OIL PROPERTIES, INC.

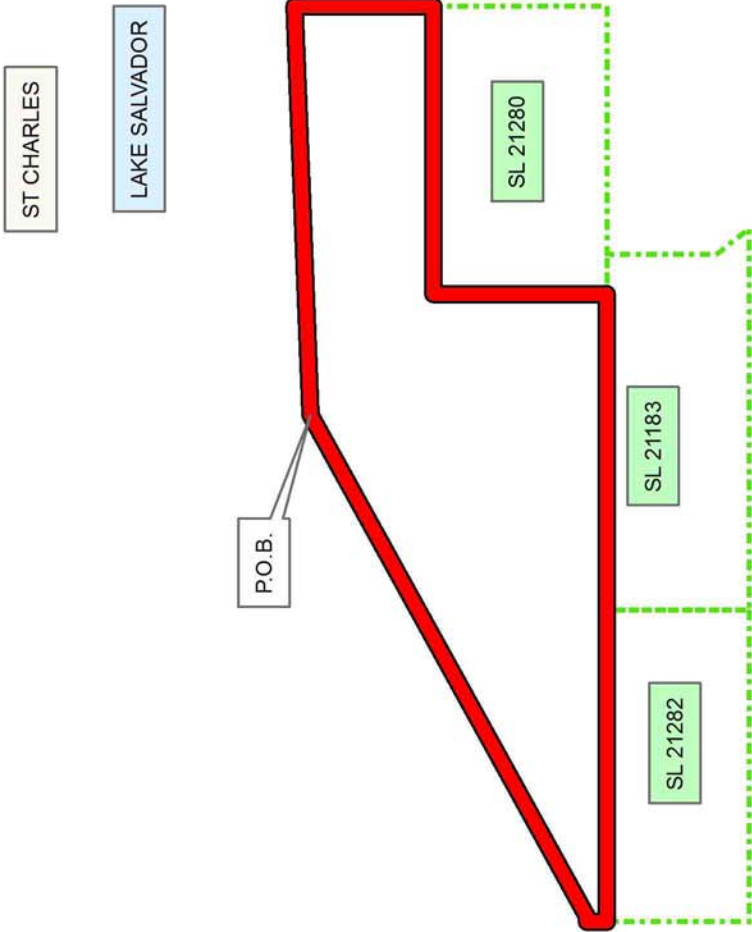
Bidder	Cash Payment	Price/Acre	Rental	Oil	Gas	Other



Legend

14010021

Active_Leases



TRACT 43718 - Jefferson and St. Charles Parishes, Louisiana

All of the lands now or formerly constituting the beds and bottoms of all water bodies of every nature and description as to which title is vested in the State of Louisiana, together with all islands arising therein and other lands formed by accretion or by reliction, where allowed by law, excepting tax adjudicated lands, and not presently under mineral lease on January 8, 2014, situated in Jefferson and St. Charles Parishes, Louisiana, and more particularly described as follows: Beginning at a point having Coordinates of X= 2,350,743.18 and Y = 384,159.59; thence East 12,424.39 feet to a point having Coordinates of X = 2,363,167.58 and Y =384,159.59; thence South 8,896.88 feet to a point having Coordinates of X = 2,363,167.58 and Y = 375,262.71; thence West 12,373.22 feet to a point having Coordinates of X = 2,350,794.36 and Y = 375,262.71; thence North 00 degree 19 minutes 47 seconds West 8,897.03 feet to the point of beginning, containing approximately **1,986 acres**, all as more particularly outlined on a plat on file in the Office of Mineral Resources, Department of Natural Resources. All bearings, distances and coordinates are based on Louisiana Coordinate System of 1927, (North or South Zone), where applicable.

NOTE: The above description of the Tract nominated for lease has been provided and corrected, where required, exclusively by the nomination party. Any mineral lease selected from this Tract and awarded by the Louisiana State Mineral and Energy Board shall be without warranty of any kind, either express, implied, or statutory, including, but not limited to, the implied warranties of merchantability and fitness for a particular purpose. Should the mineral lease awarded by the Louisiana State Mineral and Energy Board be subsequently modified, cancelled or abrogated due to the existence of conflicting leases, operating agreements, private claims or other future obligations or conditions which may affect all or any portion of the leased Tract, it shall not relieve the Lessee of the obligation to pay any bonus due thereon to the Louisiana State Mineral and Energy Board, nor shall the Louisiana State Mineral and Energy Board be obligated to refund any consideration paid by the Lessor prior to such modification, cancellation, or abrogation, including, but not limited to, bonuses, rentals and royalties.

NOTE: The State of Louisiana does hereby reserve, and this lease shall be subject to, the imprescriptible right of surface use in the nature of a servitude in favor of the Department of Natural Resources, including its Offices and Commissions, for the sole purpose of implementing, constructing, servicing and maintaining approved coastal zone management and/or restoration projects. Utilization of any and all rights derived under this lease by the mineral lessee, its agents, successors or assigns, shall not interfere with nor hinder the reasonable surface use by the Department of Natural Resources, its Offices or Commissions, as herein above reserved.

Applicant: SOUTHLAND OIL PROPERTIES, INC.

Bidder	Cash Payment	Price/ Acre	Rental	Oil	Gas	Other

Legend



14010026

Counties



0 3,000 Feet

ST CHARLES

JEFFERSON

P.O.B.

T16S - R23E

LAKE SALVADOR