

TRACT 43719 - Lafourche and St. Charles Parishes, Louisiana

All of the lands now or formerly constituting the beds and bottoms of all water bodies of every nature and description as to which title is vested in the State of Louisiana, together with all islands arising therein and other lands formed by accretion or by reliction, where allowed by law, excepting tax adjudicated lands, and not presently under mineral lease on January 8, 2014, situated in Lafourche and St. Charles Parishes, Louisiana, and more particularly described as follows: Beginning at the Southwest corner of State Lease No. 21065 having Coordinates of X = 2,335,391.67 and Y = 371,002.00; thence East 1,701.33 feet along the boundary of said State Lease No. 21065 to its Southeast corner and the Southwest corner of State Lease No. 19201 having Coordinates of X = 2,337,093.00 and Y = 371,002.00; thence along the boundary of said State Lease No. 19201 the following courses and distances: North 73 degrees 38 minutes 34 seconds East 898.36 feet and North 20 degrees 42 minutes 16 seconds West 4,884.45 feet to the Southwest corner of State Lease No. 20851 having Coordinates of X = 2,336,228.13 and Y = 375,824.00; thence East 1,906.87 feet along the boundary of said State Lease No. 20851 to its Southeast corner and a point on the boundary of State Lease No. 19232 having Coordinates of X = 2,338,135.00 and Y = 375,824.00; thence along the boundary of said State Lease No. 19232 the following courses and distances: South 2,524.00 feet and East 7,375.00 feet to its Southeast corner having Coordinates of X = 2,345,510.00 and Y = 373,300.00; thence East 5,295.65 feet to a point having Coordinates of X = 2,350,805.65 and Y = 373,300.00; thence South 04 degrees 49 minutes 24 seconds West 7,325.94 feet to a point having Coordinates of X = 2,350,189.65 and Y = 366,000.00; thence West 14,797.98 feet to a point having Coordinates of X = 2,335,391.67 and Y = 366,000.00; thence North 5,002.00 feet to the point of beginning, containing approximately **2,499.81 acres**, all as more particularly outlined on a plat on file in the Office of Mineral Resources, Department of Natural Resources. All bearings, distances and coordinates are based on Louisiana Coordinate System of 1927, (North or South Zone), where applicable.

NOTE: The above description of the Tract nominated for lease has been provided and corrected, where required, exclusively by the nomination party. Any mineral lease selected from this Tract and awarded by the Louisiana State Mineral and Energy Board shall be without warranty of any kind, either express, implied, or statutory, including, but not limited to, the implied warranties of merchantability and fitness for a particular purpose. Should the mineral lease awarded by the Louisiana State Mineral and Energy Board be subsequently modified, cancelled or abrogated due to the existence of conflicting leases, operating agreements, private claims or other future obligations or conditions which may affect all or any portion of the leased Tract, it shall not relieve the Lessee of the obligation to pay any bonus due thereon to the Louisiana State Mineral and Energy Board, nor shall the Louisiana State Mineral and Energy Board be obligated to refund any consideration paid by the Lessor prior to such

modification, cancellation, or abrogation, including, but not limited to, bonuses, rentals and royalties.

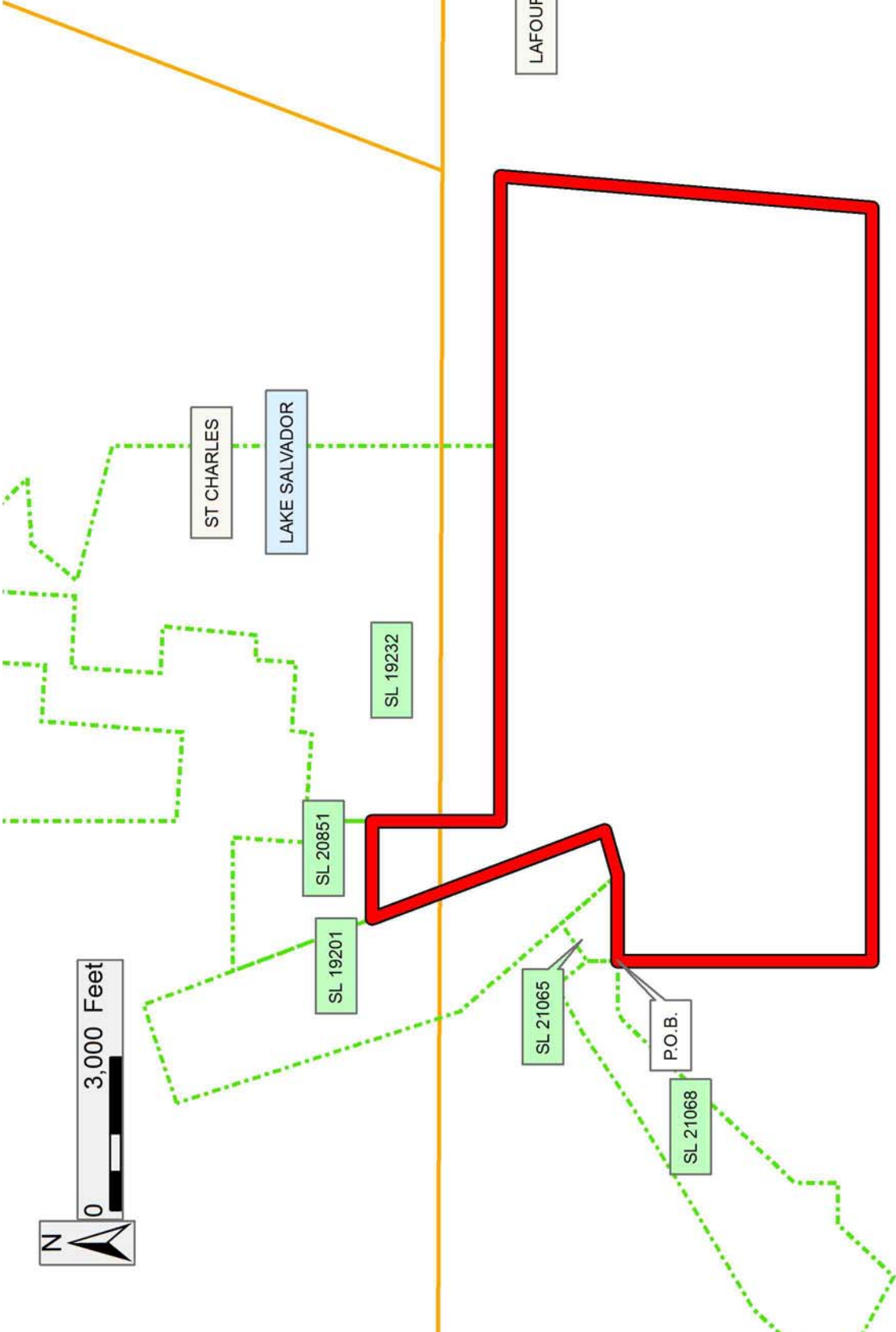
NOTE: The State of Louisiana does hereby reserve, and this lease shall be subject to, the imprescriptible right of surface use in the nature of a servitude in favor of the Department of Natural Resources, including its Offices and Commissions, for the sole purpose of implementing, constructing, servicing and maintaining approved coastal zone management and/or restoration projects. Utilization of any and all rights derived under this lease by the mineral lessee, its agents, successors or assigns, shall not interfere with nor hinder the reasonable surface use by the Department of Natural Resources, its Offices or Commissions, as herein above reserved.

Applicant: SOUTHLAND OIL PROPERTIES, INC.

Bidder	Cash Payment	Price/Acre	Rental	Oil	Gas	Other

Legend

- 14010028
- Active_Leases
- Counties



TRACT 43720 - Jefferson Lafourche and St. Charles Parishes, Louisiana

All of the lands now or formerly constituting the beds and bottoms of all water bodies of every nature and description as to which title is vested in the State of Louisiana, together with all islands arising therein and other lands formed by accretion or by reliction, where allowed by law, excepting tax adjudicated lands, and not presently under mineral lease on January 8, 2014, situated in Jefferson Lafourche and St. Charles Parishes, Louisiana, and more particularly described as follows: Beginning at a point having Coordinates of X = 2,350,974.36 and Y = 375,262.71; thence East 12,373.22 feet to a point having Coordinates of X = 2,363,167.58 and Y = 375,262.71; thence South 12,000.00 feet to a point having Coordinates of X = 2,363,167.58 and Y = 363,262.71; thence West 13,282.87 feet to a point having Coordinates of X = 2,349,884.71 and Y = 363,262.71; thence North 06 degrees 21 minutes 24 seconds East 2,754.22 feet to a point having Coordinates of X = 2,350,189.65 and Y = 366,000.00; thence North 04 degrees 49 minutes 24 seconds East 7,325.94 feet to a point having Coordinates of X = 2,350,805.65 and Y = 373,300.00; thence North 00 degree 19 minutes 47 seconds West 1,962.74 feet to the point of beginning, containing approximately **2,047 acres**, all as more particularly outlined on a plat on file in the Office of Mineral Resources, Department of Natural Resources. All bearings, distances and coordinates are based on Louisiana Coordinate System of 1927, (North or South Zone), where applicable.

NOTE: The above description of the Tract nominated for lease has been provided and corrected, where required, exclusively by the nomination party. Any mineral lease selected from this Tract and awarded by the Louisiana State Mineral and Energy Board shall be without warranty of any kind, either express, implied, or statutory, including, but not limited to, the implied warranties of merchantability and fitness for a particular purpose. Should the mineral lease awarded by the Louisiana State Mineral and Energy Board be subsequently modified, cancelled or abrogated due to the existence of conflicting leases, operating agreements, private claims or other future obligations or conditions which may affect all or any portion of the leased Tract, it shall not relieve the Lessee of the obligation to pay any bonus due thereon to the Louisiana State Mineral and Energy Board, nor shall the Louisiana State Mineral and Energy Board be obligated to refund any consideration paid by the Lessor prior to such modification, cancellation, or abrogation, including, but not limited to, bonuses, rentals and royalties.

NOTE: The State of Louisiana does hereby reserve, and this lease shall be subject to, the imprescriptible right of surface use in the nature of a servitude in favor of the Department of Natural Resources, including its Offices and Commissions, for the sole purpose of implementing, constructing, servicing and maintaining approved coastal zone management and/or restoration projects. Utilization of any and all rights derived under this lease by the mineral lessee, its agents, successors or assigns, shall not interfere with nor hinder the reasonable surface use by the

Department of Natural Resources, its Offices or Commissions, as herein above reserved.

Applicant: SOUTHLAND OIL PROPERTIES, INC.

Bidder	Cash Payment	Price/Acre	Rental	Oil	Gas	Other

Legend
14010027
Counties

N
0 3,000 Feet

T16S - R22E

JEFFERSON

LAKE SALVADOR

P.O.B.

LAFOURCHE

BAYOU PEROT

TRACT 43721 - Lafourche Parish, Louisiana

All of the lands now or formerly constituting the beds and bottoms of all water bodies of every nature and description as to which title is vested in the State of Louisiana, together with all islands arising therein and other lands formed by accretion or by reliction, where allowed by law, excepting tax adjudicated lands, and not presently under mineral lease on January 8, 2014, situated in Lafourche Parish, Louisiana, and more particularly described as follows: Beginning at the Southwest corner of State Lease No. 20877 having Coordinates of X = 2,321,250.00 and Y = 366,684.26; thence along the boundaries of said State Lease No. 20877 the following courses: East 1,633.10 feet to a point having Coordinates of X = 2,322,883.10 and Y = 366,684.26, North 2,784.89 feet to a point having Coordinates of X = 2,322,883.10 and Y = 369,469.15 and East 3,382.25 feet to the most North Southwest corner of State Lease No. 20858 having Coordinates of X = 2,326,265.35 and Y = 3,694,569.15; thence along the boundaries of said State Lease No. 20858 the following courses: continue East 899.35 feet to a point having Coordinates of X = 2,327,164.70 and Y = 369,469.15 and South 2,620.62 feet to the Northwest corner of State Lease No. 21068 having Coordinates of X = 2,327,164.70 and Y = 366,848.53; thence along the boundaries of said State Lease No. 21068 the following courses and distances: continue South 164.27 feet to a point having Coordinates of X = 2,327,164.70 and Y = 366,684.26, South 61 degrees 23 minutes 15 seconds East 2,305.90 feet, North 43 degrees 25 minutes 50 seconds East 1,520.58 feet, East 798.29 feet, North 843.26 feet, North 43 degrees 25 minutes 50 seconds East 4,650.86 feet, North 59 degrees 08 minutes 47 seconds East 189.12 feet and East 999.31 feet to its Northernmost Southeast corner having Coordinates of X = 2,335,391.67 and Y = 371,002.00; thence South 11,166.21 feet to the Southernmost Northeast corner of State Lease No. 21069 having Coordinates of X = 2,335,391.67 and Y = 359,835.79; thence along the boundary of said State Lease No. 21069 the following courses and distances: North 66 degrees 13 minutes 50 seconds West 1,771.98 feet, North 80 degrees 16 minutes 21 seconds West 1,065.32 feet, North 46 degrees 19 minutes 56 seconds West 1,824.83 feet, North 34 degrees 00 minutes 13 seconds East 1,519.90 feet, North 58 degrees 32 minutes 31 seconds West 4,771.27 feet, South 36 degrees 33 minutes 09 seconds West 1,444.02 feet, North 66 degrees 36 minutes 53 seconds West 1,209.34 feet, South 45 degrees 00 minutes 00 seconds West 1,071.73 feet, South 00 degrees 23 minutes 13 seconds East 522.41 feet, South 56 degrees 20 minutes 21 seconds East 10,445.68 feet and North 73 degrees 18 minutes 03 seconds East 1,296.34 feet to its Southeast corner having Coordinates of X = 2,335,391.67 and Y = 358,362.50; thence South 3,134.29 feet to a point having Coordinates of X = 2,335,391.67 and Y = 355,228.21; thence North 89 degrees 59 minutes 59 seconds West 16,317.94 feet to a point being the Southeast corner of State Lease No. 21070 having Coordinates of X = 2,319,073.73 and Y = 355,228.27; thence along the boundary of said State Lease No. 21070 the following: North 01 degrees 40 minutes 00 seconds West 2,505.77 feet and West 387.85 feet to a point having Coordinates of X = 2,318,613.00 and Y = 357,732.98; thence North 8,637.02 feet to a point having Coordinates of X = 2,318,613.00 and Y =

366,370.00; thence West 1,663.00 feet to a point having Coordinates of X = 2,316,950.00 and Y = 366,370.00; thence North 456.42 feet to the Southeast corner of State Lease No. 20938 having Coordinates of X = 2,316,950.00 and Y = 366,826.42; thence continue North 305.34 feet along the east boundary of said State Lease No. 20938 to the Southwest corner of State Lease No. 21283 having Coordinates of X = 2,316,950.00 and Y = 367,131.76; thence along the boundaries of said State Lease No. 21283 the following courses: East 1,469.50 feet to a point having Coordinates of X = 2,318,419.50 and Y = 367,131.76 and North 2,738.24 feet to a point on the Southern boundary of said State Lease No. 20938 having Coordinates of X = 2,318,419.50 and Y = 369,870.00; thence East 2,830.50 feet along the Southern boundary of said State Lease No. 20938 to a point on the West boundary of said State Lease No. 20877 having Coordinates of X = 2,321,250.00 and Y = 369,870.00; thence South 3,185.74 feet along the West boundary of said State Lease No. 20877 to the point of beginning, (This lease includes only waterbottoms claimed and owned by the state and specifically excludes any School Indemnity land located within the above described tract), containing approximately **1,937 acres**, all as more particularly outlined on a plat on file in the Office of Mineral Resources, Department of Natural Resources. All bearings, distances and coordinates are based on Louisiana Coordinate System of 1927, (North or South Zone), where applicable.

NOTE: The above description of the Tract nominated for lease has been provided and corrected, where required, exclusively by the nomination party. Any mineral lease selected from this Tract and awarded by the Louisiana State Mineral and Energy Board shall be without warranty of any kind, either express, implied, or statutory, including, but not limited to, the implied warranties of merchantability and fitness for a particular purpose. Should the mineral lease awarded by the Louisiana State Mineral and Energy Board be subsequently modified, cancelled or abrogated due to the existence of conflicting leases, operating agreements, private claims or other future obligations or conditions which may affect all or any portion of the leased Tract, it shall not relieve the Lessee of the obligation to pay any bonus due thereon to the Louisiana State Mineral and Energy Board, nor shall the Louisiana State Mineral and Energy Board be obligated to refund any consideration paid by the Lessor prior to such modification, cancellation, or abrogation, including, but not limited to, bonuses, rentals and royalties.

NOTE: The State of Louisiana does hereby reserve, and this lease shall be subject to, the imprescriptible right of surface use in the nature of a servitude in favor of the Department of Natural Resources, including its Offices and Commissions, for the sole purpose of implementing, constructing, servicing and maintaining approved coastal zone management and/or restoration projects. Utilization of any and all rights derived under this lease by the mineral lessee, its agents, successors or assigns, shall not interfere with nor hinder the reasonable surface use by the Department of Natural Resources, its Offices or Commissions, as herein above reserved.

Applicant: SOUTHLAND OIL PROPERTIES, INC.

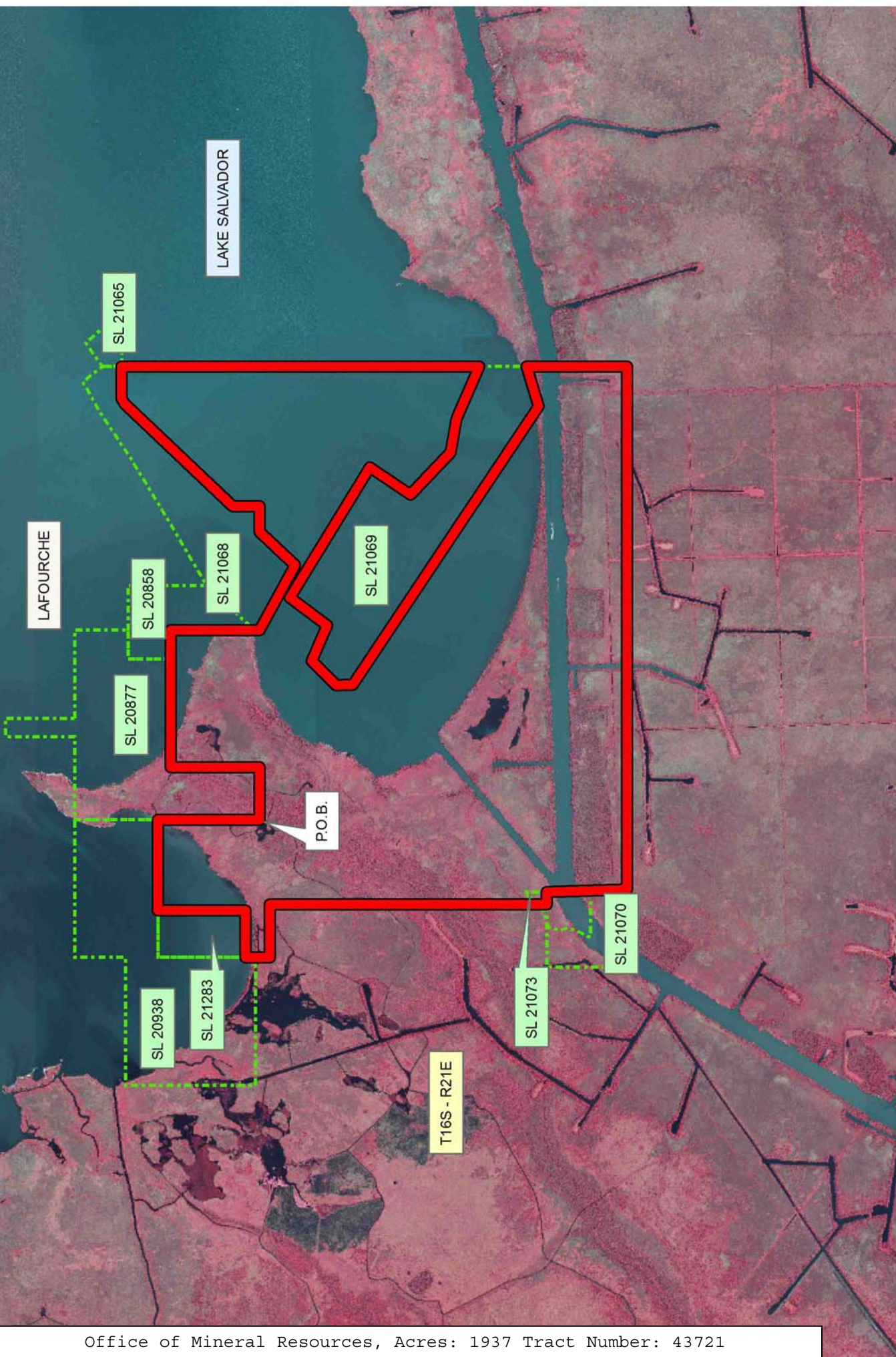
Bidder	Cash Payment	Price/Acre	Rental	Oil	Gas	Other

Legend

14010030



Active_Leases



TRACT 43722 - Lafourche Parish, Louisiana

All of the lands now or formerly constituting the beds and bottoms of all water bodies of every nature and description as to which title is vested in the State of Louisiana, together with all islands arising therein and other lands formed by accretion or by reliction, where allowed by law, excepting tax adjudicated lands, and not presently under mineral lease on January 8, 2014, situated in Lafourche Parish, Louisiana, and more particularly described as follows: Beginning at having Coordinates of X = 2,335,391.67 and Y = 366,000.00; thence East 14,797.98 feet to a point having Coordinates of X = 2,350,189.65 and Y = 366,000.00; thence South 06 degrees 21 minutes 24 seconds West 10,838.42 feet to a point having Coordinates of X = 2,348,989.65 and Y = 355,228.21; thence West 13,597.98 feet to a point having Coordinates of X = 2,335,391.67 and Y = 355,228.21; thence North 3,134.29 feet to the Southeast corner of State Lease No. 21069 having Coordinates of X = 2,335,391.67 and Y = 358,362.50; thence North 1,473.29 feet along the boundary of said State Lease No. 21069 to its Southernmost Northeast corner having Coordinates of X = 2,335,391.67 and Y = 359,835.79; thence North 6,164.21 feet to the point of beginning, containing approximately **970 acres**, all as more particularly outlined on a plat on file in the Office of Mineral Resources, Department of Natural Resources. All bearings, distances and coordinates are based on Louisiana Coordinate System of 1927, (North or South Zone), where applicable.

NOTE: The above description of the Tract nominated for lease has been provided and corrected, where required, exclusively by the nomination party. Any mineral lease selected from this Tract and awarded by the Louisiana State Mineral and Energy Board shall be without warranty of any kind, either express, implied, or statutory, including, but not limited to, the implied warranties of merchantability and fitness for a particular purpose. Should the mineral lease awarded by the Louisiana State Mineral and Energy Board be subsequently modified, cancelled or abrogated due to the existence of conflicting leases, operating agreements, private claims or other future obligations or conditions which may affect all or any portion of the leased Tract, it shall not relieve the Lessee of the obligation to pay any bonus due thereon to the Louisiana State Mineral and Energy Board, nor shall the Louisiana State Mineral and Energy Board be obligated to refund any consideration paid by the Lessor prior to such modification, cancellation, or abrogation, including, but not limited to, bonuses, rentals and royalties.

NOTE: The State of Louisiana does hereby reserve, and this lease shall be subject to, the imprescriptible right of surface use in the nature of a servitude in favor of the Department of Natural Resources, including its Offices and Commissions, for the sole purpose of implementing, constructing, servicing and maintaining approved coastal zone management and/or restoration projects. Utilization of any and all rights derived under this lease by the mineral lessee, its agents, successors or assigns, shall not interfere with nor hinder the reasonable surface use by the

Department of Natural Resources, its Offices or Commissions, as herein above reserved.

Applicant: SOUTHLAND OIL PROPERTIES, INC.

Bidder	Cash Payment	Price/Acre	Rental	Oil	Gas	Other

Legend



14010029



Active_Leases



3,000 Feet

0



LAFOURCHE

LAKE SALVADOR

P.O.B.

SL 21069

T16S - R22E

T17S - R22E

TRACT 43723 - Jefferson and Plaquemines Parishes, Louisiana

All of the lands now or formerly constituting the beds and bottoms of all water bodies of every nature and description as to which title is vested in the State of Louisiana, together with all islands arising therein and other lands formed by accretion or by reliction, where allowed by law, excepting tax adjudicated lands, and not presently under mineral lease on January 8, 2014, situated in Jefferson and Plaquemines Parishes, Louisiana, and more particularly described as follows: Beginning at the Northwest corner of State Lease No. 20775, also being a point on the boundary of State Lease No. 20942, having Coordinates of X = 2,415,963.34 and Y = 329,950.00; thence along the boundary of said State Lease No. 20942 the following courses and distances: North 3,190.00 feet to a point having Coordinates of X = 2,415,963.34 and Y = 333,140.00 and West approximately 4,719 feet to a point on the boundary of State Lease No. 356, as amended, having a Coordinate of Y = 333,140.00; thence Northeasterly along the boundary of said State Lease No. 356 to a point having a Coordinate of Y = 342,044.79; thence East approximately 10,153 feet to a point having Coordinates of X = 2,428,963.79 and Y = 342,044.79; thence South 12,094.79 feet to a point having Coordinates of X = 2,428,963.79 and Y = 329,950.00; thence West 9,500.00 feet to the Northeast corner of said State Lease No. 20775, having Coordinates of X = 2,419,463.79 and Y = 329,950.00; thence West 3,500.45 feet along the North line of said State Lease No. 20775 to the point of beginning, **LESS AND EXCEPT** that portion of State Lease No. 356, as amended, that may lie within the above described tract, containing approximately **305 acres**, all as more particularly outlined on a plat on file in the Office of Mineral Resources, Department of Natural Resources. All bearings, distances and coordinates are based on Louisiana Coordinate System of 1927, (North or South Zone), where applicable.

NOTE: The above description of the Tract nominated for lease has been provided and corrected, where required, exclusively by the nomination party. Any mineral lease selected from this Tract and awarded by the Louisiana State Mineral and Energy Board shall be without warranty of any kind, either express, implied, or statutory, including, but not limited to, the implied warranties of merchantability and fitness for a particular purpose. Should the mineral lease awarded by the Louisiana State Mineral and Energy Board be subsequently modified, cancelled or abrogated due to the existence of conflicting leases, operating agreements, private claims or other future obligations or conditions which may affect all or any portion of the leased Tract, it shall not relieve the Lessee of the obligation to pay any bonus due thereon to the Louisiana State Mineral and Energy Board, nor shall the Louisiana State Mineral and Energy Board be obligated to refund any consideration paid by the Lessor prior to such modification, cancellation, or abrogation, including, but not limited to, bonuses, rentals and royalties.

NOTE: The State of Louisiana does hereby reserve, and this lease shall be subject to, the imprescriptible right of surface use in the nature of a

servitude in favor of the Department of Natural Resources, including its Offices and Commissions, for the sole purpose of implementing, constructing, servicing and maintaining approved coastal zone management and/or restoration projects. Utilization of any and all rights derived under this lease by the mineral lessee, its agents, successors or assigns, shall not interfere with nor hinder the reasonable surface use by the Department of Natural Resources, its Offices or Commissions, as herein above reserved.

Applicant: THEOPHILUS OIL, GAS & LAND SERVICES, LLC

Bidder	Cash Payment	Price/Acre	Rental	Oil	Gas	Other

Legend

14010051



Active_Leases

PLAQUEMINES

BAYOU DUPONT

ROUND LAKE

JEFFERSON

GOELETTE BAY

SL 20775

SL 356

P.O.B.

SL 20942



TRACT 43724 - Jefferson and Plaquemines Parishes, Louisiana

All of the lands now or formerly constituting the beds and bottoms of all water bodies of every nature and description as to which title is vested in the State of Louisiana, together with all islands arising therein and other lands formed by accretion or by reliction, where allowed by law, excepting tax adjudicated lands, and not presently under mineral lease on January 8, 2014, situated in Jefferson and Plaquemines Parishes, Louisiana, and more particularly described as follows: Beginning at the Northeast corner of State Lease No. 20775 having Coordinates of X = 2,419,463.79 and Y = 329,950.00; thence East 9,500.00 feet to a point having Coordinates of X = 2,428,963.79 and Y = 329,950.00; thence South 2,000.00 feet to a point having Coordinates of X = 2,428,963.79 and Y = 327,950.00; thence East 3,200.51 feet to a point having Coordinates of X = 2,432,164.30 and Y = 327,950.00; thence South 13,650.00 feet to a point having Coordinates of X = 2,432,164.30 and Y = 314,300.00; thence West 16,906.87 feet to a point having Coordinates of X = 2,415,257.43 and Y = 314,300.00; thence North 00 degrees 15 minutes 40 seconds East 3,855.04 feet to a point on the Southern boundary of State Lease No. 21017 having Coordinates of X = 2,415,274.99 and Y = 318,155.00; thence along the boundary of said State Lease No. 21017 the following courses and distances: North 56 degrees 18 minutes 36 seconds East 126.19 feet to a point having Coordinates of X = 2,415,379.99 and Y = 318,225.00, North 48 degrees 10 minutes 47 seconds East 127.48 feet to a point having Coordinates of X = 2,415,474.99 and Y = 318,310.00; North 41 degrees 59 minutes 25 seconds East 134.54 feet to a point having Coordinates of X = 2,415,565.00 and Y = 318,410.00; North 35 degrees 43 minutes 39 seconds East 702.14 feet to a point having Coordinates of X = 2,415,975.00 and Y = 318,980.00; North 43 degrees 09 minutes 09 seconds East 109.66 feet to a point having Coordinates of X = 2,416,050.00 and Y = 319,060.00, North 54 degrees 27 minutes 31 seconds East 129.04 feet to a point having Coordinates of X = 2,416,155.00 and Y = 319,135.01, North 63 degrees 26 minutes 19 seconds East 145.34 feet to a point having Coordinates of X = 2,416,285.00 and Y = 319,200.00, North 78 degrees 24 minutes 28 seconds East 199.06 feet to a point having Coordinates of X = 2,416,480.00 and Y = 319,240.00, North 86 degrees 11 minutes 09 seconds East 150.33 feet to a point having Coordinates of X = 2,416,630.00 and Y = 319,250.00, East 170.00 feet to a point having Coordinates of X = 2,416,800.00 and Y = 319,250.00, North 84 degrees 17 minutes 22 seconds East 301.50 feet to a point having Coordinates of X = 2,417,100.00 and Y = 319,280.00, North 78 degrees 41 minutes 24 seconds East 331.44 feet to a point having Coordinates of X = 2,417,425.00 and Y = 319,245.00, North 61 degrees 02 minutes 56 seconds East 268.56 feet to a point having Coordinates of X = 2,417,660.00 and Y = 319,475.00, North 56 degrees 46 minutes 06 seconds East 173.35 feet to a point having Coordinates of X = 2,417,805.00 and Y = 319,570.00, North 51 degrees 29 minutes 35 seconds East 875.38 feet to a point having Coordinates of X = 2,418,490.01 and Y = 320,115.02, North 48 degrees 55 minutes 23 seconds East 1,240.34 feet to a point having Coordinates of X = 2,419,425.01 and Y = 320,930.01, North 45 degrees 39 minutes 54 seconds East 50.57 feet to a point having Coordinates of X =

2,419,461.18 and Y = 320,965.35, North 01 degrees 00 minutes 24 seconds West 988.74 feet to a point having Coordinates of X = 2,419,443.81 and Y = 321,953.94, North 88 degrees 56 minutes 57 seconds East 367.00 feet to a point having Coordinates of X = 2,419,810.75 and Y = 321,960.67, North 04 degrees 38 minutes 58 seconds West 1,183.31 feet and X = 2,419,714.83 and Y = 323,140.09, North 71 degrees 50 minutes 27 seconds West 793.44 feet to a point having Coordinates of X = 2,418,960.91 and Y = 323,387.37 and South 43 degrees 15 minutes 20 seconds West 4,374.40 feet to a point having Coordinates of X = 2,415,963.34 and Y = 320,201.47; thence North 1,988.32 feet to the Southeast corner of State Lease No. 20780, having Coordinates of X = 2,415,963.34 and Y = 322,189.79; thence North 2,500.00 feet along the East line of said State Lease No. 20780 to its Northeast corner, also being the Southeast corner of State Lease No. 20942 having Coordinates of X = 2,415,963.34 and Y = 324,689.79; thence North 2,860.21 feet along the East line of said State Lease No. 20942 to the Southwest corner of said State Lease No. 20775, having Coordinates of X = 2,415,963.34 and Y = 327,550.00; thence along the boundary of said State Lease No. 20775 the following courses and distances: East 3,500.45 feet to a point having Coordinates of X = 2,419,463.79 and Y = 327,550.00 and North 2,400.00 feet to the point of beginning, **LESS AND EXCEPT** in its entirety, the following described tract, being the boundary of State of Louisiana State Lease No. 20779, as amended, being more fully described as follows: Commencing at a point being the point of beginning of the above described nominated tract having coordinates of X = 2,419,463.79 and Y = 329,950.00; thence South 20 degrees 59 minutes 54 seconds East 9,206.77 feet to a point being the point of beginning of said State Lease No. 19064 having Coordinates of X = 2,422,762.94 and Y = 321,354.64; thence South 01 degrees 03 minutes 13 seconds East 2,969.41 feet to a point having Coordinates of X = 2,422,807.57 and Y = 318,385.75; thence South 88 degrees 57 minutes 34 seconds West 2,640.39 feet to a point having Coordinates of X = 2,420,167.62 and Y = 318,337.79; thence North 01 degrees 00 minutes 45 seconds West 2,969.37 feet to a point having Coordinates of X = 2,420,115.13 and Y = 321,306.68; thence North 88 degrees 57 minutes 31 seconds East 2,638.24 feet to the point of beginning, **LESS AND EXCEPT** any right, title, and interest in lands owned by and not under lease from the State of Louisiana, on behalf of the Jefferson Parish School Board, situated in Section 16, Township 18 South, Range 24 East, Jefferson Parish, Louisiana, contained within the above described tract, the nominated tract containing approximately **2,261 acres**, all as more particularly outlined on a plat on file in the Office of Mineral Resources, Department of Natural Resources. All bearings, distances and coordinates are based on Louisiana Coordinate System of 1927, (North or South Zone), where applicable.

NOTE: The above description of the Tract nominated for lease has been provided and corrected, where required, exclusively by the nomination party. Any mineral lease selected from this Tract and awarded by the Louisiana State Mineral and Energy Board shall be without warranty of any kind, either express, implied, or statutory, including, but not limited

to, the implied warranties of merchantability and fitness for a particular purpose. Should the mineral lease awarded by the Louisiana State Mineral and Energy Board be subsequently modified, cancelled or abrogated due to the existence of conflicting leases, operating agreements, private claims or other future obligations or conditions which may affect all or any portion of the leased Tract, it shall not relieve the Lessee of the obligation to pay any bonus due thereon to the Louisiana State Mineral and Energy Board, nor shall the Louisiana State Mineral and Energy Board be obligated to refund any consideration paid by the Lessor prior to such modification, cancellation, or abrogation, including, but not limited to, bonuses, rentals and royalties.

NOTE: The State of Louisiana does hereby reserve, and this lease shall be subject to, the imprescriptible right of surface use in the nature of a servitude in favor of the Department of Natural Resources, including its Offices and Commissions, for the sole purpose of implementing, constructing, servicing and maintaining approved coastal zone management and/or restoration projects. Utilization of any and all rights derived under this lease by the mineral lessee, its agents, successors or assigns, shall not interfere with nor hinder the reasonable surface use by the Department of Natural Resources, its Offices or Commissions, as herein above reserved.

Applicant: THEOPHILUS OIL, GAS & LAND SERVICES, LLC

Bidder	Cash Payment	Price/Acre	Rental	Oil	Gas	Other

Legend

14010053



Active_Leases



0 3,000 Feet

JEFFERSON

P.O.B.

GOELETTE BAY

ROUND LAKE

PLAQUEMINES

SL 20942

SL 20775

SL 20780

SPOONBILL BAY

SL 21017

SL 20779

TRACT 43725 - Jefferson Parish, Louisiana

All of the lands now or formerly constituting the beds and bottoms of all water bodies of every nature and description as to which title is vested in the State of Louisiana, together with all islands arising therein and other lands formed by accretion or by reliction, where allowed by law, excepting tax adjudicated lands, and not presently under mineral lease on January 8, 2014, situated in Jefferson Parish, Louisiana, and more particularly described as follows: Beginning at a point on the boundary of State Lease No. 20778, also being a point on the Southern boundary of State Lease No. 20942, having Coordinates of X = 2,405,597.00 and Y = 324,689.79; thence East approximately 734 feet along the boundary of said State Lease No. 20942 to a point on the boundary of State Lease No. 356, as amended, having a Coordinate of Y = 324,689.79; thence Southerly, Southwesterly and Northeasterly along the boundary of said State Lease No. 356 to a point having a Coordinate of Y = 324,689.79, also being a point on the Southern boundary of said State Lease No. 20942; thence East to the Northwest corner of State Lease No. 20780, having Coordinates of X = 2,413,463.34 and Y = 324,689.79; thence along the boundary of said State Lease No. 20780 the following courses and distances: South 2,500.00 feet to a point having Coordinates of X = 2,413,463.34 and Y = 322,189.79 and East 2,500.00 feet to a point having Coordinates of X = 2,415,963.34 and Y = 322,189.79; thence South 1,988.32 feet to a point on the boundary of State Lease No. 21017 having Coordinates of X = 2,415,963.34 and Y = 320,201.47; thence along the boundary of said State Lease No. 21017 the following courses and distances: South 43 degrees 15 minutes 20 seconds West 261.54 feet to a point having Coordinates of X = 2,415,784.12 and Y = 320,010.99, South 29 degrees 43 minutes 32 seconds East 425.94 feet to a point having Coordinates of X = 2,415,995.32 and Y = 319,641.10, South 34 degrees 26 minutes 20 seconds West 504.54 feet to a point having Coordinates of X = 2,415,709.99 and Y = 319,224.99, South 31 degrees 18 minutes 38 seconds West 567.66 feet to a point having Coordinates of X = 2,415,414.99 and Y = 318,740.00, South 30 degrees 09 minutes 36 seconds West 427.93 feet to a point having Coordinates of X = 2,415,199.99 and Y = 318,370.00, South 24 degrees 16 minutes 21 seconds West 279.73 feet to a point having Coordinates of X = 2,415,085.00 and Y = 318,115.00, North 85 degrees 01 minutes 47 seconds East 115.42 feet to a point having Coordinates of X = 2,415,199.99 and Y = 318,125.00, and North 68 degrees 11 minutes 55 seconds East 80.78 feet to a point having Coordinates of X = 2,415,274.99 and Y = 318,155.00; thence South 00 degrees 15 minutes 40 seconds West 3,855.04 feet to a point having Coordinates of X = 2,415,257.43 and Y = 314,300.00; thence West 15,200.00 feet to a point having Coordinates of X = 2,400,057.43 and Y = 314,300.00; thence North 2,500.00 feet to a point on the Southern boundary of State Lease No. 20777, having Coordinates of X = 2,400,057.43 and Y = 316,800.00; thence East 1,942.57 feet along said Southern boundary of said State Lease No. 20777 to its Southeast corner, also being a point on the boundary of said State Lease No. 20778, having Coordinates of X = 2,402,000.00 and Y = 316,800.00; thence along the boundary of said State Lease No. 20778 the following courses and distances: East 4,600.00 feet to a point having

Coordinates of X = 2,406,600.00 and Y = 316,800.00, and North 2,550.00 feet to a point on the South boundary of State Lease No. 18441, having Coordinates of X = 2,406,600.00 and Y = 319,350.00; then along the boundary of said State Lease No. 18441 the following courses and distances: East 3,320.00 feet to a point having Coordinates of X = 2,409,920.00 and Y = 319,350.00, North 1,819.00 feet to a point having Coordinates of X = 2,409,920.00 and Y = 321,169.00 and West 4,323.00 feet to a point on the boundary of said State Lease No. 20778, having Coordinates of X = 2,405,597.00 and Y = 321,169.00; thence North 3,520.79 feet along the boundary of said State Lease No. 20778 to the point of beginning, **LESS AND EXCEPT** any right, title, and interest in lands owned by and not under lease from the State of Louisiana, on behalf of the Jefferson Parish School Board, situated in Section 16, Township 18 South, Range 24 East, Jefferson Parish, Louisiana, contained within the above described tract, and **LESS AND EXCEPT** that portion of State Lease No. 356, as amended, that may lie within the above described tract, containing approximately **460 acres**, all as more particularly outlined on a plat on file in the Office of Mineral Resources, Department of Natural Resources. All bearings, distances and coordinates are based on Louisiana Coordinate System of 1927, (North or South Zone), where applicable.

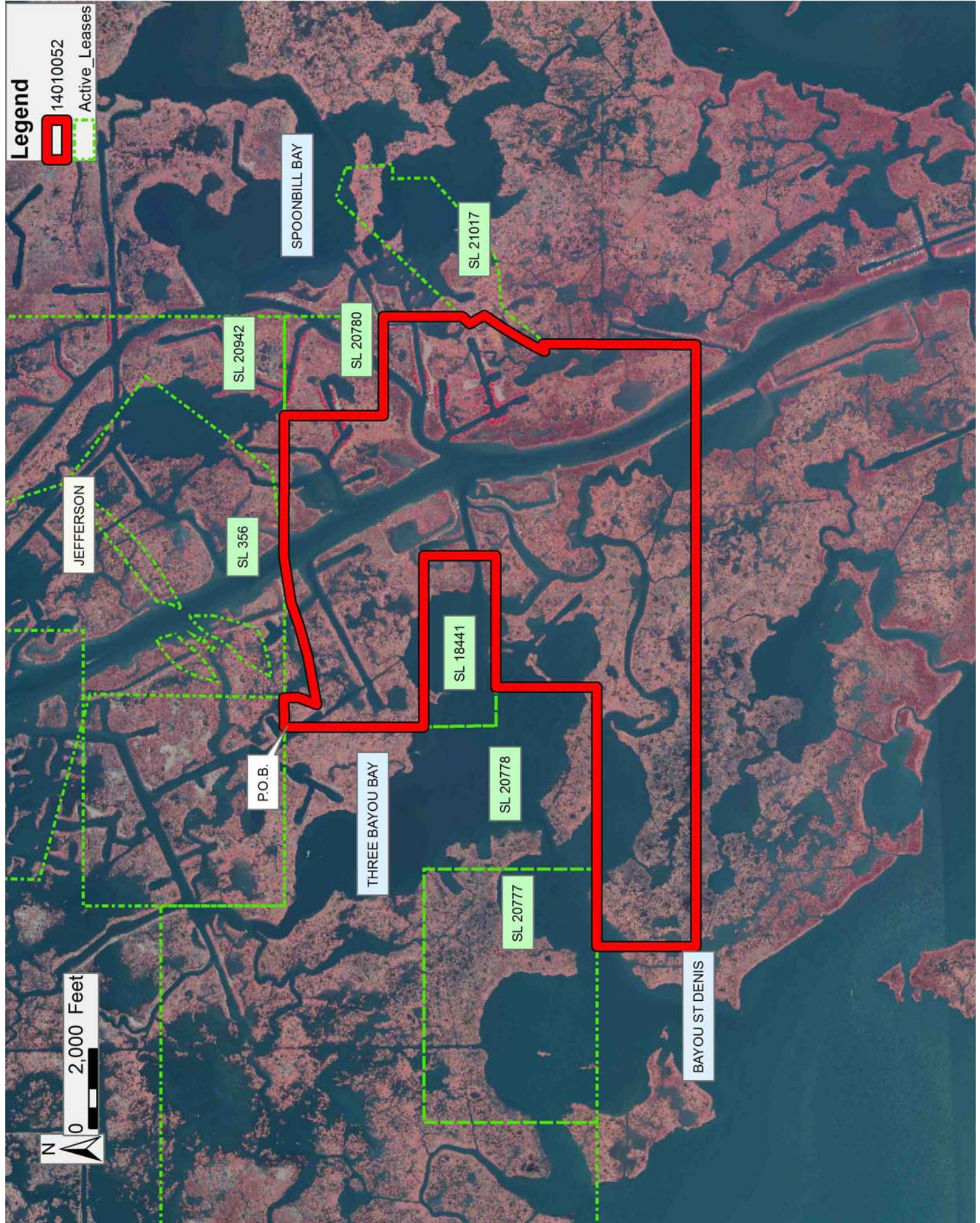
NOTE: The above description of the Tract nominated for lease has been provided and corrected, where required, exclusively by the nomination party. Any mineral lease selected from this Tract and awarded by the Louisiana State Mineral and Energy Board shall be without warranty of any kind, either express, implied, or statutory, including, but not limited to, the implied warranties of merchantability and fitness for a particular purpose. Should the mineral lease awarded by the Louisiana State Mineral and Energy Board be subsequently modified, cancelled or abrogated due to the existence of conflicting leases, operating agreements, private claims or other future obligations or conditions which may affect all or any portion of the leased Tract, it shall not relieve the Lessee of the obligation to pay any bonus due thereon to the Louisiana State Mineral and Energy Board, nor shall the Louisiana State Mineral and Energy Board be obligated to refund any consideration paid by the Lessor prior to such modification, cancellation, or abrogation, including, but not limited to, bonuses, rentals and royalties.

NOTE: The State of Louisiana does hereby reserve, and this lease shall be subject to, the imprescriptible right of surface use in the nature of a servitude in favor of the Department of Natural Resources, including its Offices and Commissions, for the sole purpose of implementing, constructing, servicing and maintaining approved coastal zone management and/or restoration projects. Utilization of any and all rights derived under this lease by the mineral lessee, its agents, successors or assigns, shall not interfere with nor hinder the reasonable surface use by the Department of Natural Resources, its Offices or Commissions, as herein above reserved.

Applicant: THEOPHILUS OIL, GAS & LAND SERVICES, LLC

Bidder	Cash Payment	Price/Acre	Rental	Oil	Gas	Other

Legend
14010052
Active_Leases



TRACT 43726 - Jefferson Parish, Louisiana

All of the lands now or formerly constituting the beds and bottoms of all water bodies of every nature and description as to which title is vested in the State of Louisiana, together with all islands arising therein and other lands formed by accretion or by reliction, where allowed by law, excepting tax adjudicated lands, and not presently under mineral lease on January 8, 2014, situated in Jefferson Parish, Louisiana, and more particularly described as follows: Beginning at the Southwest corner of State Lease No. 20778, having Coordinates of X = 2,389,057.43 and Y = 316,800.00; thence East 6,557.57 feet along the South line of said State Lease No. 20778 to the Southwest corner of State Lease No. 20777, having Coordinates of X = 2,395,615.00 and Y = 316,800.00; thence East 4,442.43 feet along the South line of said State Lease No. 20777 to a point having Coordinates of X = 2,400,057.43 and Y = 316,800.00; thence South 9,334.09 feet to a point having Coordinates of X = 2,400,057.43 and Y = 307,465.91; thence West 11,000.00 feet to a point having Coordinates of X = 2,389,057.43 and Y = 307,465.91; thence North 9,334.09 feet to the point of beginning, containing approximately **2,082 acres**, all as more particularly outlined on a plat on file in the Office of Mineral Resources, Department of Natural Resources. All bearings, distances and coordinates are based on Louisiana Coordinate System of 1927, (North or South Zone), where applicable.

NOTE: The above description of the Tract nominated for lease has been provided and corrected, where required, exclusively by the nomination party. Any mineral lease selected from this Tract and awarded by the Louisiana State Mineral and Energy Board shall be without warranty of any kind, either express, implied, or statutory, including, but not limited to, the implied warranties of merchantability and fitness for a particular purpose. Should the mineral lease awarded by the Louisiana State Mineral and Energy Board be subsequently modified, cancelled or abrogated due to the existence of conflicting leases, operating agreements, private claims or other future obligations or conditions which may affect all or any portion of the leased Tract, it shall not relieve the Lessee of the obligation to pay any bonus due thereon to the Louisiana State Mineral and Energy Board, nor shall the Louisiana State Mineral and Energy Board be obligated to refund any consideration paid by the Lessor prior to such modification, cancellation, or abrogation, including, but not limited to, bonuses, rentals and royalties.

NOTE: The State of Louisiana does hereby reserve, and this lease shall be subject to, the imprescriptible right of surface use in the nature of a servitude in favor of the Department of Natural Resources, including its Offices and Commissions, for the sole purpose of implementing, constructing, servicing and maintaining approved coastal zone management and/or restoration projects. Utilization of any and all rights derived under this lease by the mineral lessee, its agents, successors or assigns, shall not interfere with nor hinder the reasonable surface use by the

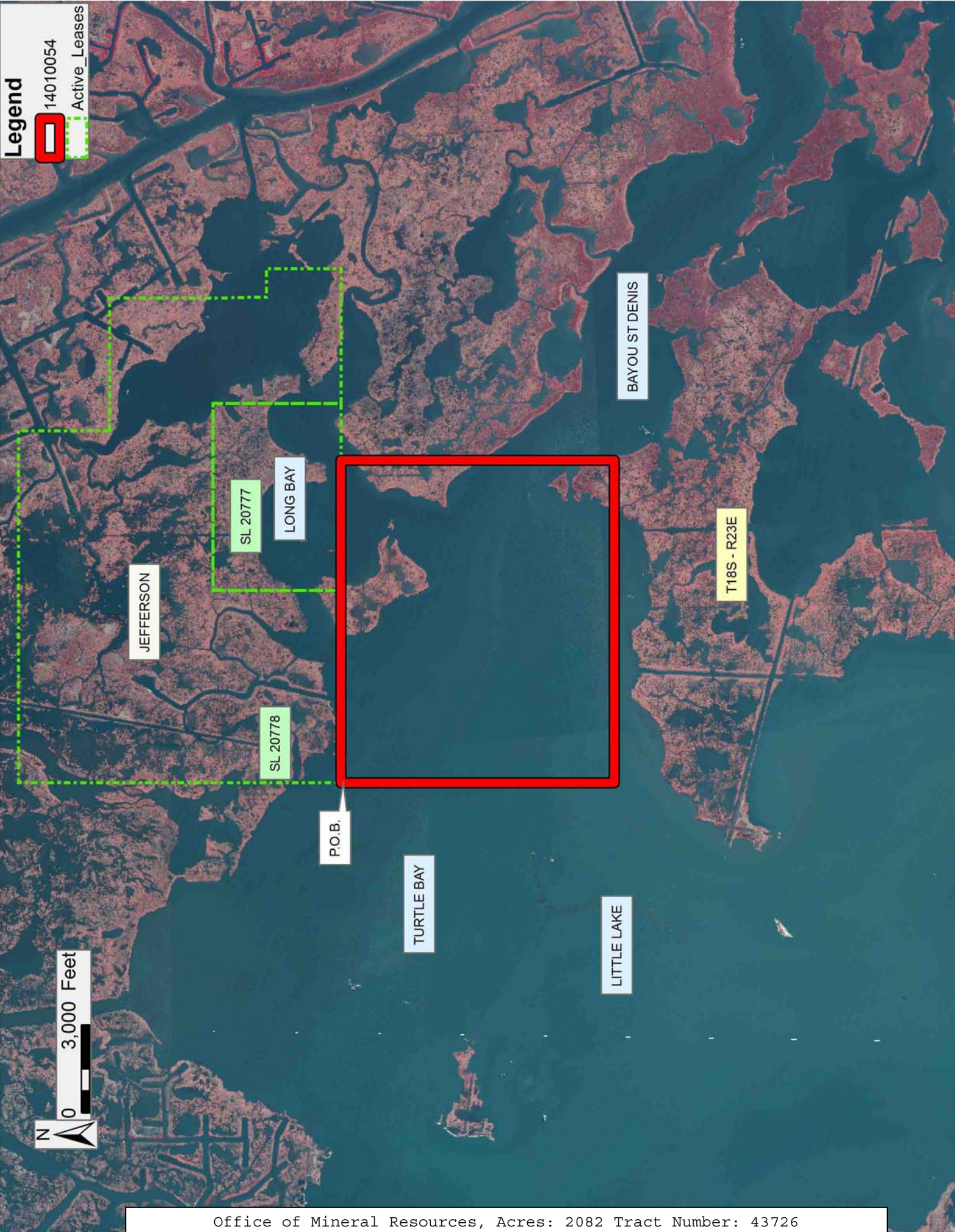
Department of Natural Resources, its Offices or Commissions, as herein above reserved.

NOTE: This tract is located in an area designated by the Louisiana Legislature or the Wildlife and Fisheries Commission as a Public Oyster Seed Ground, Reservation, or area of Calcasieu or Sabine Lake. Proposed projects occurring in these areas will be evaluated on a case by case basis by Louisiana Department of Wildlife & Fisheries. Modifications to proposed project features including, but not limited to, access routes, well sites, flowlines, and appurtenant structures maybe required by the Louisiana Department of Wildlife and Fisheries. In addition, compensatory mitigation will be required to offset unavoidable habitat impacts.

Applicant: THEOPHILUS OIL, GAS & LAND SERVICES, LLC

Bidder	Cash Payment	Price/Acre	Rental	Oil	Gas	Other

Legend
14010054
Active_Leases



TRACT 43727 - Jefferson Parish, Louisiana

All of the lands now or formerly constituting the beds and bottoms of all water bodies of every nature and description as to which title is vested in the State of Louisiana, together with all islands arising therein and other lands formed by accretion or by reliction, where allowed by law, excepting tax adjudicated lands, and not presently under mineral lease on January 8, 2014, situated in Jefferson Parish, Louisiana, and more particularly described as follows: Beginning at a point having Coordinates of X = 2,400,057.43 and Y = 314,300.00; thence East 15,200.00 feet to a point having Coordinates of X = 2,415,257.43 and Y = 314,300.00; thence South 6,834.09 feet to a point having Coordinates of X = 2,415,257.43 and Y = 307,465.91; thence West 15,200.00 feet to a point having Coordinates of X = 2,400,057.43 and Y = 307,465.91; thence North 6,834.09 feet to the point of beginning, **LESS AND EXCEPT** any right, title, and interest in lands owned by and not under lease from the State of Louisiana, on behalf of the Jefferson Parish School Board, situated in Section 16, Township 18 South, Range 24 East, Jefferson Parish, Louisiana, contained within the above described tract, containing approximately **361 acres**, all as more particularly outlined on a plat on file in the Office of Mineral Resources, Department of Natural Resources. All bearings, distances and coordinates are based on Louisiana Coordinate System of 1927, (North or South Zone), where applicable.

NOTE: The above description of the Tract nominated for lease has been provided and corrected, where required, exclusively by the nomination party. Any mineral lease selected from this Tract and awarded by the Louisiana State Mineral and Energy Board shall be without warranty of any kind, either express, implied, or statutory, including, but not limited to, the implied warranties of merchantability and fitness for a particular purpose. Should the mineral lease awarded by the Louisiana State Mineral and Energy Board be subsequently modified, cancelled or abrogated due to the existence of conflicting leases, operating agreements, private claims or other future obligations or conditions which may affect all or any portion of the leased Tract, it shall not relieve the Lessee of the obligation to pay any bonus due thereon to the Louisiana State Mineral and Energy Board, nor shall the Louisiana State Mineral and Energy Board be obligated to refund any consideration paid by the Lessor prior to such modification, cancellation, or abrogation, including, but not limited to, bonuses, rentals and royalties.

NOTE: The State of Louisiana does hereby reserve, and this lease shall be subject to, the imprescriptible right of surface use in the nature of a servitude in favor of the Department of Natural Resources, including its Offices and Commissions, for the sole purpose of implementing, constructing, servicing and maintaining approved coastal zone management and/or restoration projects. Utilization of any and all rights derived under this lease by the mineral lessee, its agents, successors or assigns, shall not interfere with nor hinder the reasonable surface use by the

Department of Natural Resources, its Offices or Commissions, as herein above reserved.

NOTE: This tract is located in an area designated by the Louisiana Legislature or the Wildlife and Fisheries Commission as a Public Oyster Seed Ground, Reservation, or area of Calcasieu or Sabine Lake. Proposed projects occurring in these areas will be evaluated on a case by case basis by Louisiana Department of Wildlife & Fisheries. Modifications to proposed project features including, but not limited to, access routes, well sites, flowlines, and appurtenant structures maybe required by the Louisiana Department of Wildlife and Fisheries. In addition, compensatory mitigation will be required to offset unavoidable habitat impacts.

Applicant: THEOPHILUS OIL, GAS & LAND SERVICES, LLC

Bidder	Cash Payment	Price/Acre	Rental	Oil	Gas	Other

Legend



JEFFERSON

P.O.B.

LITTLE LAKE

BAYOU ST DENIS



TRACT 43728 - Jefferson and Plaquemines Parishes, Louisiana

All of the lands now or formerly constituting the beds and bottoms of all water bodies of every nature and description as to which title is vested in the State of Louisiana, together with all islands arising therein and other lands formed by accretion or by reliction, where allowed by law, excepting tax adjudicated lands, and not presently under mineral lease on January 8, 2014, situated in Jefferson and Plaquemines Parishes, Louisiana, and more particularly described as follows: Beginning at a point having Coordinates of X = 2,415,257.43 and Y = 314,300.00; thence East 16,906.87 feet to a point having Coordinates of X = 2,432,164.30 and Y = 314,300.00; thence South 6,773.50 feet to a point having Coordinates of X = 2,432,164.30 and Y = 307,526.50; thence West 5,200.00 feet to the Northeast corner of State Lease No. 20512, having Coordinates of X = 2,426,964.30 and Y = 307,526.50; thence South 88 degrees 47 minutes 45 seconds West 2,883.00 feet along the North boundary of said State Lease No. 20512 to its Northwest corner, having Coordinates of X = 2,424,081.93 and Y = 307,465.91; thence West 8,824.50 feet to a point having Coordinates of X = 2,415,257.43 and Y = 307,465.91; thence North 6,834.09 feet to the point of beginning, **LESS AND EXCEPT** any right, title, and interest in lands owned by and not under lease from the State of Louisiana, on behalf of the Jefferson Parish School Board, situated in Section 16, Township 18 South, Range 24 East, Jefferson Parish, Louisiana, contained within the above described tract, containing approximately **1,217 acres**, all as more particularly outlined on a plat on file in the Office of Mineral Resources, Department of Natural Resources. All bearings, distances and coordinates are based on Louisiana Coordinate System of 1927, (North or South Zone), where applicable.

NOTE: The above description of the Tract nominated for lease has been provided and corrected, where required, exclusively by the nomination party. Any mineral lease selected from this Tract and awarded by the Louisiana State Mineral and Energy Board shall be without warranty of any kind, either express, implied, or statutory, including, but not limited to, the implied warranties of merchantability and fitness for a particular purpose. Should the mineral lease awarded by the Louisiana State Mineral and Energy Board be subsequently modified, cancelled or abrogated due to the existence of conflicting leases, operating agreements, private claims or other future obligations or conditions which may affect all or any portion of the leased Tract, it shall not relieve the Lessee of the obligation to pay any bonus due thereon to the Louisiana State Mineral and Energy Board, nor shall the Louisiana State Mineral and Energy Board be obligated to refund any consideration paid by the Lessor prior to such modification, cancellation, or abrogation, including, but not limited to, bonuses, rentals and royalties.

NOTE: The State of Louisiana does hereby reserve, and this lease shall be subject to, the imprescriptible right of surface use in the nature of a servitude in favor of the Department of Natural Resources, including its Offices and Commissions, for the sole purpose of implementing,

constructing, servicing and maintaining approved coastal zone management and/or restoration projects. Utilization of any and all rights derived under this lease by the mineral lessee, its agents, successors or assigns, shall not interfere with nor hinder the reasonable surface use by the Department of Natural Resources, its Offices or Commissions, as herein above reserved.

Applicant: THEOPHILUS OIL, GAS & LAND SERVICES, LLC

Bidder	Cash Payment	Price/Acre	Rental	Oil	Gas	Other

Legend

- 14010056
- Active_Leases
- Counties

