

TRACT 43753 - Calcasieu Parish, Louisiana

All of the lands now or formerly constituting the beds and bottoms of all water bodies of every nature and description the title of which vests in the State of Louisiana, together with all islands arising therein and other lands formed by accretion or by reliction, where allowed by law, excepting tax adjudicated lands, and not presently under mineral lease on February 12, 2014, situated in Calcasieu Parish, Louisiana, and more particularly described as follows: Beginning at a point having Coordinates of X = 1,255,200.00 and Y = 580,800.00; thence South 11,700.00 feet to a point having Coordinates of X = 1,255,200.00 and Y = 569,100.00; thence West 9,800.00 feet to a point having Coordinates of X = 1,245,400.00 and Y = 569,100.00; thence North 4,000.00 feet to a point having Coordinates of X = 1,245,400.00 and Y = 573,100.00; thence East 2,919.91 feet to a point having Coordinates of X = 1,248,319.91 and Y = 573,100.00; thence South 995.24 feet to a point on the Western boundary of State Lease No. 15155, as amended, having Coordinates of X = 1,248,319.91 and Y = 572,104.76; thence along the boundary of said State Lease No. 15155, as amended, the following courses: South 524.96 feet to a point having Coordinates of X = 1,248,319.91 and Y = 571,579.80 and East 2,680.10 feet to the Southwest corner of State Lease No. 15726, as amended, having Coordinates of X = 1,251,000.00 and Y = 571,579.80; thence along the boundary of said State Lease No. 15726, as amended, the following courses: East 703.40 feet to a point having Coordinates of X = 1,251,703.41 and Y = 571,579.80 and North 970.26 feet to a the Southeast corner of State Lease No. 15202, as amended, having Coordinates of X = 1,251,703.41 and Y = 572,550.06; thence along the boundary of said State Lease No. 15202, as amended, the following courses: North 1,349.74 feet to a point having Coordinates of X = 1,251,703.41 and Y = 573,899.80 and West 703.52 feet to the Northeast corner of said State Lease No. 15155, as amended, having Coordinates of X = 1,250,999.89 and Y = 573,899.80; thence West 2,221.82 feet along the North line of said State Lease No. 15155, as amended, to its Northwest corner having Coordinates of X = 1,248,778.08 and Y = 573,899.80; thence West 478.08 feet to a point having Coordinates of X = 1,248,300.00 and Y = 573,899.80; thence North 6,900.20 feet to a point having Coordinates of X = 1,248,300.00 and Y = 580,800.00; thence East 6,900.00 feet to the point of beginning, (This tract includes only waterbottoms claimed and owned by the state and specifically excludes any land which the state or Wildlife and Fisheries may claim or own and to which the mineral rights are vested in them), containing approximately **35 acres, LESS AND EXCEPT** that portion thereof, if any, located West of the boundary line between the States of Texas and Louisiana as determined by the report of the Special Master and adjudicated by the Supreme Court of the United States in litigation styled **Texas v. Louisiana, et al No. 36 Original**, or as otherwise approved by said court, all as more particularly outlined on a plat on file in the Office of Mineral Resources, Department of Natural Resources. All bearings, distances and coordinates are based on Louisiana Coordinate System of 1927, (North or South Zone), where applicable.

NOTE: The above description of the Tract nominated for lease has been provided and corrected, where required, exclusively by the nomination

party. Any mineral lease selected from this Tract and awarded by the Louisiana State Mineral and Energy Board shall be without warranty of any kind, either express, implied, or statutory, including, but not limited to, the implied warranties of merchantability and fitness for a particular purpose. Should the mineral lease awarded by the Louisiana State Mineral and Energy Board be subsequently modified, cancelled or abrogated due to the existence of conflicting leases, operating agreements, private claims or other future obligations or conditions which may affect all or any portion of the leased Tract, it shall not relieve the Lessee of the obligation to pay any bonus due thereon to the Louisiana State Mineral and Energy Board, nor shall the Louisiana State Mineral and Energy Board be obligated to refund any consideration paid by the Lessor prior to such modification, cancellation, or abrogation, including, but not limited to, bonuses, rentals and royalties.

NOTE: The mineral lease is located in the Sabine Island Wildlife Management Area under the jurisdiction of the Louisiana Department of Wildlife and Fisheries which has promulgated rules and regulations for the protection of game and wildlife on the aforesaid Tract and, therefore, shall be subject to said rules and regulations, a copy of which shall be attached to the mineral lease. In addition to the specific rules and regulations applicable, the following shall apply regarding operations under this mineral lease:

NOTE: No activities will be allowed without written authorization from the Louisiana Department of Wildlife and Fisheries.

NOTE: Proposed projects will be evaluated on a case by case basis. Modifications to proposed project features including but not limited to access routes, spoil placement, well sites, flowlines and appurtenant structures may be required by the Department of Wildlife and Fisheries

NOTE: Compliance with the said WMA regulations will be required unless otherwise specified by the Department of Wildlife and Fisheries.

NOTE: Compensatory mitigation will be required to offset unavoidable wetland impacts.

NOTE: Removal of all structures, facilities and equipment will be required within 120 days of abandonment unless otherwise agreed to in writing by the Louisiana Department of Wildlife and Fisheries.

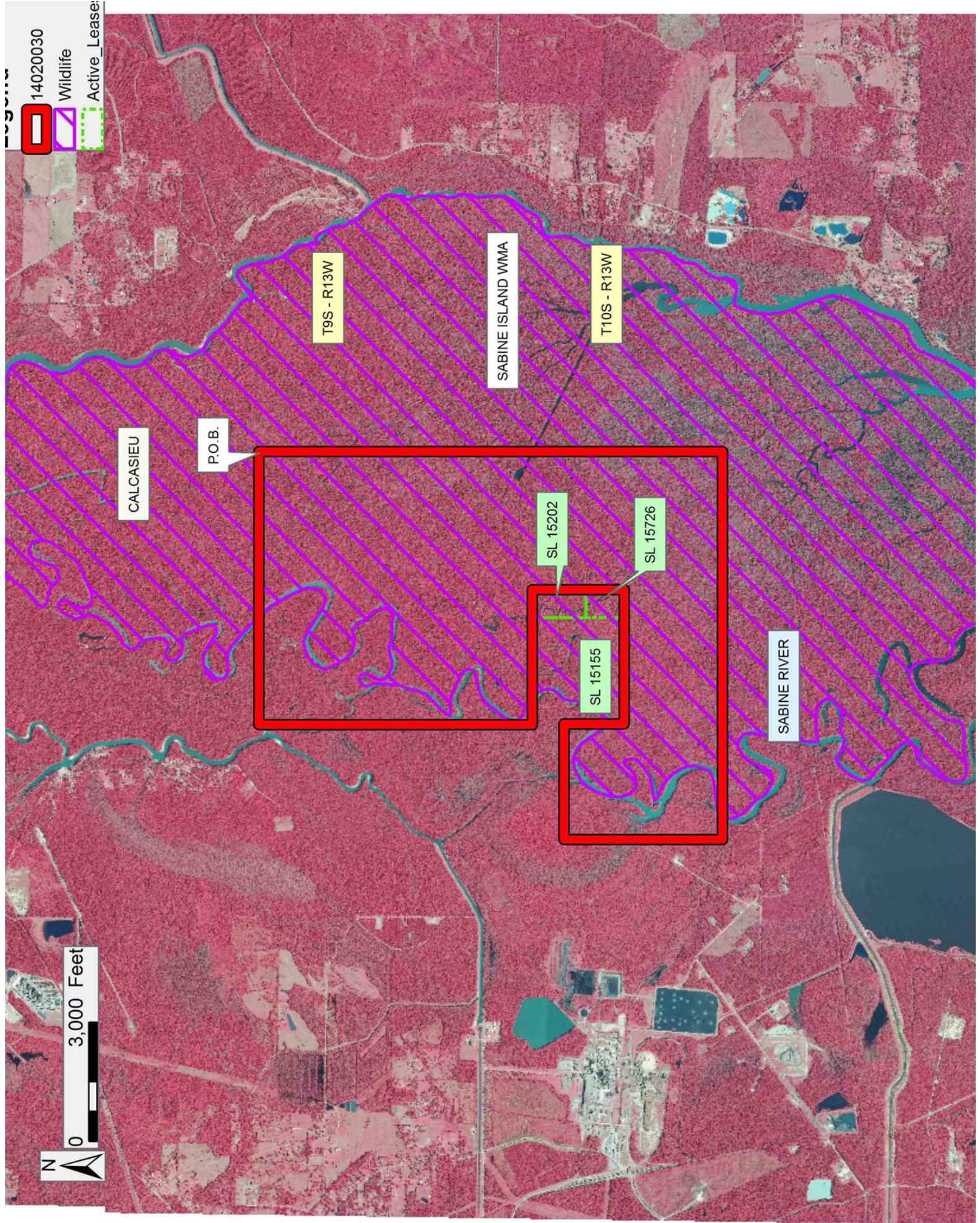
NOTE: No activities will be allowed during the hunting season unless approved by the Department.

NOTE: Prior to submitting applications for wetland permits to Federal and State permitting agencies the leaseholder shall coordinate project details with the Department of Wildlife and Fisheries. Contact person for the Department will be Mike Windham at (504) 284-5268.

NOTE: Additional the Department of Wildlife & Fisheries will require a minimum cash payment of \$350 per acre and a minimum royalty of 25%.

Applicant: STEPHEN M. JENKINS, INC.

Bidder	Cash Payment	Price/Acre	Rental	Oil	Gas	Other



TRACT 43754 - Calcasieu Parish, Louisiana

All of the lands now or formerly constituting the beds and bottoms of all water bodies of every nature and description as to which title is vested in the State of Louisiana, together with all islands arising therein and other lands formed by accretion or by reliction, where allowed by law, excepting tax adjudicated lands, and not presently under mineral lease on February 12, 2014, situated in Calcasieu Parish, Louisiana, and more particularly described as follows: Beginning at a point having Coordinates of X = 1,255,200.00 and Y = 574,900.00; thence East 6,900.00 feet to a point having Coordinates of X = 1,262,100.00 and Y = 574,900.00; thence South 5,800.00 feet to a point having Coordinates of X = 1,262,100.00 and Y = 569,100.00; thence West 6,900.00 feet to a point having Coordinates of X = 1,255,200.00 and Y = 569,100.00; thence North 5,800.00 feet to the point of beginning, (This tract includes only waterbottoms claimed and owned by the state and specifically excludes any land which the state or Wildlife and Fisheries may claim or own and to which the mineral rights are vested in them), containing approximately **40 acres**, all as more particularly outlined on a plat on file in the Office of Mineral Resources, Department of Natural Resources. All bearings, distances and coordinates are based on Louisiana Coordinate System of 1927, (North or South Zone), where applicable.

NOTE: The above description of the Tract nominated for lease has been provided and corrected, where required, exclusively by the nomination party. Any mineral lease selected from this Tract and awarded by the Louisiana State Mineral and Energy Board shall be without warranty of any kind, either express, implied, or statutory, including, but not limited to, the implied warranties of merchantability and fitness for a particular purpose. Should the mineral lease awarded by the Louisiana State Mineral and Energy Board be subsequently modified, cancelled or abrogated due to the existence of conflicting leases, operating agreements, private claims or other future obligations or conditions which may affect all or any portion of the leased Tract, it shall not relieve the Lessee of the obligation to pay any bonus due thereon to the Louisiana State Mineral and Energy Board, nor shall the Louisiana State Mineral and Energy Board be obligated to refund any consideration paid by the Lessor prior to such modification, cancellation, or abrogation, including, but not limited to, bonuses, rentals and royalties.

NOTE: The mineral lease is located in the Sabine Island Wildlife Management Area under the jurisdiction of the Louisiana Department of Wildlife and Fisheries which has promulgated rules and regulations for the protection of game and wildlife on the aforesaid Tract and, therefore, shall be subject to said rules and regulations, a copy of which shall be attached to the mineral lease. In addition to the specific rules and regulations applicable, the following shall apply regarding operations under this mineral lease:

NOTE: No activities will be allowed without written authorization from the Louisiana Department of Wildlife and Fisheries.

NOTE: Proposed projects will be evaluated on a case by case basis. Modifications to proposed project features including but not limited to access routes, spoil placement, well sites, flowlines and appurtenant structures may be required by the Department of Wildlife and Fisheries.

NOTE: Compliance with the said WMA regulations will be required unless otherwise specified by the Department of Wildlife and Fisheries.

NOTE: Compensatory mitigation will be required to offset unavoidable wetland impacts.

NOTE: Removal of all structures, facilities and equipment will be required within 120 days of abandonment unless otherwise agreed to in writing by the Louisiana Department of Wildlife and Fisheries.

NOTE: No activities will be allowed during the hunting season unless approved by the Department.

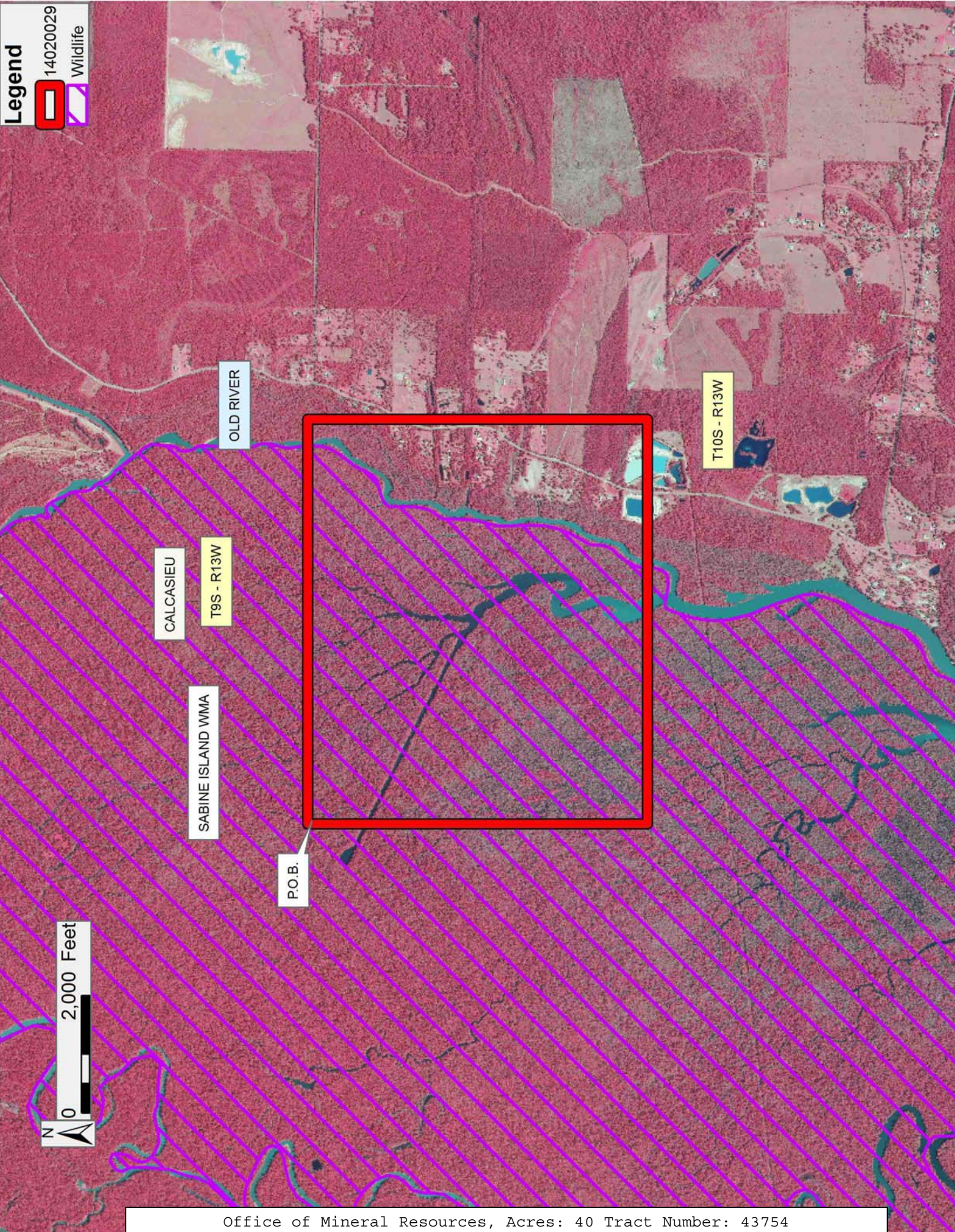
NOTE: Prior to submitting applications for wetland permits to Federal and State permitting agencies the leaseholder shall coordinate project details with the Department of Wildlife and Fisheries. Contact person for the Department will be Mike Windham at (504) 284-5268.

NOTE: Additionally, the Department of Wildlife & Fisheries will require a minimum bonus of \$350 per acre and a minimum royalty of 25%.

Applicant: STEPHEN M. JENKINS, INC.

Bidder	Cash Payment	Price/Acre	Rental	Oil	Gas	Other

Legend



TRACT 43755 - Cameron and Jefferson Davis Parishes, Louisiana

All of the lands now or formerly constituting the beds and bottoms of all water bodies of every nature and description as to which title is vested in the State of Louisiana, together with all islands arising therein and other lands formed by accretion or by reliction, where allowed by law, excepting tax adjudicated lands, and not presently under mineral lease on February 12, 2014, situated in Cameron and Jefferson Davis Parishes, Louisiana, and more particularly described as follows: Beginning at a point having Coordinates of X = 1,509,720.00 and Y = 503,709.00; thence East 18,480.00 feet to a point having Coordinates of X = 1,528,200.00 and Y = 503,709.00; thence South 18,480.00 feet to a point having Coordinates of X = 1,528,200.00 and Y = 485,229.00; thence West 18,480.00 feet to a point having Coordinates of X = 1,509,720.00 and Y = 485,229.00; thence North 18,480.00 feet to the point of beginning, **LESS AND EXCEPT** any right, title, and interest in lands owned by and not under lease from the State of Louisiana, on behalf of the Cameron Parish School Board, situated in Section 16, Township 12 South, Range 5 West, Cameron Parish, Louisiana, contained within the above described tract, containing approximately **785 acres**, all as more particularly outlined on a plat on file in the Office of Mineral Resources, Department of Natural Resources. All bearings, distances and coordinates are based on Louisiana Coordinate System of 1927, (North or South Zone), where applicable.

NOTE: The above description of the Tract nominated for lease has been provided and corrected, where required, exclusively by the nomination party. Any mineral lease selected from this Tract and awarded by the Louisiana State Mineral and Energy Board shall be without warranty of any kind, either express, implied, or statutory, including, but not limited to, the implied warranties of merchantability and fitness for a particular purpose. Should the mineral lease awarded by the Louisiana State Mineral and Energy Board be subsequently modified, cancelled or abrogated due to the existence of conflicting leases, operating agreements, private claims or other future obligations or conditions which may affect all or any portion of the leased Tract, it shall not relieve the Lessee of the obligation to pay any bonus due thereon to the Louisiana State Mineral and Energy Board, nor shall the Louisiana State Mineral and Energy Board be obligated to refund any consideration paid by the Lessor prior to such modification, cancellation, or abrogation, including, but not limited to, bonuses, rentals and royalties.

NOTE: The State of Louisiana does hereby reserve, and this lease shall be subject to, the imprescriptible right of surface use in the nature of a servitude in favor of the Department of Natural Resources, including its Offices and Commissions, for the sole purpose of implementing, constructing, servicing and maintaining approved coastal zone management and/or restoration projects. Utilization of any and all rights derived under this lease by the mineral lessee, its agents, successors or assigns, shall not interfere with nor hinder the reasonable surface use by the

Department of Natural Resources, its Offices or Commissions, as herein above reserved.

Applicant: BANFF ENERGY, L.L.C.

Bidder	Cash Payment	Price/Acre	Rental	Oil	Gas	Other

Legend

- 14020028
- Counties

T11S - R5W

JEFFERSON DAVIS

BAYOU LACASSINE

P.O.B.

CAMERON



TRACT 43756 - Cameron Parish, Louisiana

All of the lands now or formerly constituting the beds and bottoms of all water bodies of every nature and description as to which title is vested in the State of Louisiana, together with all islands arising therein and other lands formed by accretion or by reliction, where allowed by law, excepting tax adjudicated lands, and not presently under mineral lease on February 12, 2014, situated in Cameron Parish, Louisiana, and more particularly described as follows: Beginning at a point having Coordinates of X = 1,515,706.00 and Y = 485,229.00; thence East 18,480.00 feet to a point having Coordinates of X = 1,534,186.00 and Y = 485,229.00; thence South 18,480.00 feet to a point having Coordinates of X = 1,534,186.00 and Y = 466,749.00; thence West 18,480.00 feet to a point having Coordinates of X = 1,515,706.00 and Y = 466,749.00; thence North 18,480.00 feet to the point of beginning, **LESS AND EXCEPT** all of Operating Agreement 329 that lies within the above described tract, the nominated tract containing approximately **2,307 acres**, all as more particularly outlined on a plat on file in the Office of Mineral Resources, Department of Natural Resources. All bearings, distances and coordinates are based on Louisiana Coordinate System of 1927, (North or South Zone), where applicable.

NOTE: The above description of the Tract nominated for lease has been provided and corrected, where required, exclusively by the nomination party. Any mineral lease selected from this Tract and awarded by the Louisiana State Mineral and Energy Board shall be without warranty of any kind, either express, implied, or statutory, including, but not limited to, the implied warranties of merchantability and fitness for a particular purpose. Should the mineral lease awarded by the Louisiana State Mineral and Energy Board be subsequently modified, cancelled or abrogated due to the existence of conflicting leases, operating agreements, private claims or other future obligations or conditions which may affect all or any portion of the leased Tract, it shall not relieve the Lessee of the obligation to pay any bonus due thereon to the Louisiana State Mineral and Energy Board, nor shall the Louisiana State Mineral and Energy Board be obligated to refund any consideration paid by the Lessor prior to such modification, cancellation, or abrogation, including, but not limited to, bonuses, rentals and royalties.

NOTE: The State of Louisiana does hereby reserve, and this lease shall be subject to, the imprescriptible right of surface use in the nature of a servitude in favor of the Department of Natural Resources, including its Offices and Commissions, for the sole purpose of implementing, constructing, servicing and maintaining approved coastal zone management and/or restoration projects. Utilization of any and all rights derived under this lease by the mineral lessee, its agents, successors or assigns, shall not interfere with nor hinder the reasonable surface use by the Department of Natural Resources, its Offices or Commissions, as herein above reserved.

Applicant: BANFF ENERGY, L.L.C.

Bidder	Cash Payment	Price/Acre	Rental	Oil	Gas	Other

Legend

14020027



T12S - R4W

CAMERON

A0329

BAYOU LACASSINE

GRAND LAKE

P.O.B.

0 3,000 Feet



TRACT 43757 - Portion of Block 31, Main Pass Area, Revised, Plaquemines Parish, Louisiana

All of the lands now or formerly constituting the beds and bottoms of all water bodies of every nature and description as to which title is vested in the State of Louisiana, together with all islands arising therein and other lands formed by accretion or by reliction, where allowed by law, excepting tax adjudicated lands, and not presently under mineral lease on February 12, 2014, situated in Plaquemines Parish, Louisiana, and more particularly described as follows: Beginning at a point having Coordinates of X = 2,620,600.00 and Y = 294,830.00, said point being on the West line of Block 31, Main Pass Area, Revised, said point also being the Westernmost Northwest corner of State Lease No. 2125, as amended; thence North 3,025.83 feet on and along said West line of said Block 31, Main Pass Area, Revised, to a point having Coordinates of X = 2,620,600.00 and Y = 297,855.83, said point being on the Southern boundary of State Lease No. 20103; thence on and along the Southern, Eastern and Northern boundaries of said State Lease No. 20103 the following courses: East 867.89 feet to a point having Coordinates of X = 2,621,467.89 and Y = 297,855.83, said point being the Southeast corner of said State Lease No. 20103; North 1,320.00 feet to a point having Coordinates of X = 2,621,467.89 and Y = 299,175.83, said point being the Northeast corner of said State Lease No. 20103; and West 867.89 feet to a point having Coordinates of X = 2,620,600.00 and Y = 299,175.83, said point being on said West line of said Block 31, Main Pass Area, Revised; thence North 8,404.17 feet on and along said West line of said Block 31, Main Pass Area, Revised, to a point having Coordinates of X = 2,620,600.00 and Y = 307,580.00, said point being the Northwest corner of said Block 31, Main Pass Area, Revised; thence East 7,375.00 feet on and along the North line of said Block 31, Main Pass Area, Revised, to a point having Coordinates of X = 2,627,975.00 and Y = 307,580.00; thence South 14,750.00 feet to a point having Coordinates of X = 2,627,975.00 and Y = 292,830.00, said point being on the South line of said Block 31, Main Pass Area, Revised; thence West 3,725.00 feet on and along said South line of said Block 31, Main Pass Area, Revised, to a point having Coordinates of X = 2,624,250.00 and Y = 292,830.00, said point being the Southernmost Southeast corner of said State Lease No. 2125, as amended; thence on and along the Eastern and Northern boundaries of said State Lease No. 2125, as amended, the following courses: North 52 degrees 54 minutes 26 seconds East 2,570.02 feet to a point having Coordinates of X = 2,626,300.00 and Y = 294,380.00; North 10 degrees 46 minutes 25 seconds East 2,514.32 feet to a point having Coordinates of X = 2,626,770.00 and Y = 296,850.00; South 83 degrees 19 minutes 25 seconds West 3,010.42 feet to a point having Coordinates of X = 2,623,780.00 and Y = 296,500.00; South 55 degrees 44 minutes 20 seconds West 3,339.46 feet to a point having Coordinates of X = 2,621,020.00 and Y = 294,620.00; and North 63 degrees 26 minutes 06 seconds West 469.57 feet to the point of beginning, containing approximately **2,082.33 acres**, all as more particularly outlined on a plat on file in the Office of Mineral Resources, Department of Natural

Resources. All bearings, distances and coordinates are based on Louisiana Coordinate System of 1927, (North or South Zone), where applicable.

NOTE: The above description of the Tract nominated for lease has been provided and corrected, where required, exclusively by the nomination party. Any mineral lease selected from this Tract and awarded by the Louisiana State Mineral and Energy Board shall be without warranty of any kind, either express, implied, or statutory, including, but not limited to, the implied warranties of merchantability and fitness for a particular purpose. Should the mineral lease awarded by the Louisiana State Mineral and Energy Board be subsequently modified, cancelled or abrogated due to the existence of conflicting leases, operating agreements, private claims or other future obligations or conditions which may affect all or any portion of the leased Tract, it shall not relieve the Lessee of the obligation to pay any bonus due thereon to the Louisiana State Mineral and Energy Board, nor shall the Louisiana State Mineral and Energy Board be obligated to refund any consideration paid by the Lessor prior to such modification, cancellation, or abrogation, including, but not limited to, bonuses, rentals and royalties.

NOTE: The State of Louisiana does hereby reserve, and this lease shall be subject to, the imprescriptible right of surface use in the nature of a servitude in favor of the Department of Natural Resources, including its Offices and Commissions, for the sole purpose of implementing, constructing, servicing and maintaining approved coastal zone management and/or restoration projects. Utilization of any and all rights derived under this lease by the mineral lessee, its agents, successors or assigns, shall not interfere with nor hinder the reasonable surface use by the Department of Natural Resources, its Offices or Commissions, as herein above reserved.

NOTE: This tract is located in an area designated by the Louisiana Legislature or the Wildlife and Fisheries Commission as a Public Oyster Seed Ground, Reservation, or area of Calcasieu or Sabine Lake. Proposed projects occurring in these areas will be evaluated on a case by case basis by Louisiana Department of Wildlife & Fisheries. Modifications to proposed project features including, but not limited to, access routes, well sites, flowlines, and appurtenant structures maybe required by the Louisiana Department of Wildlife and Fisheries. In addition, compensatory mitigation will be required to offset unavoidable habitat impacts.

Applicant: ROBERT A. SCHROEDER, INC.

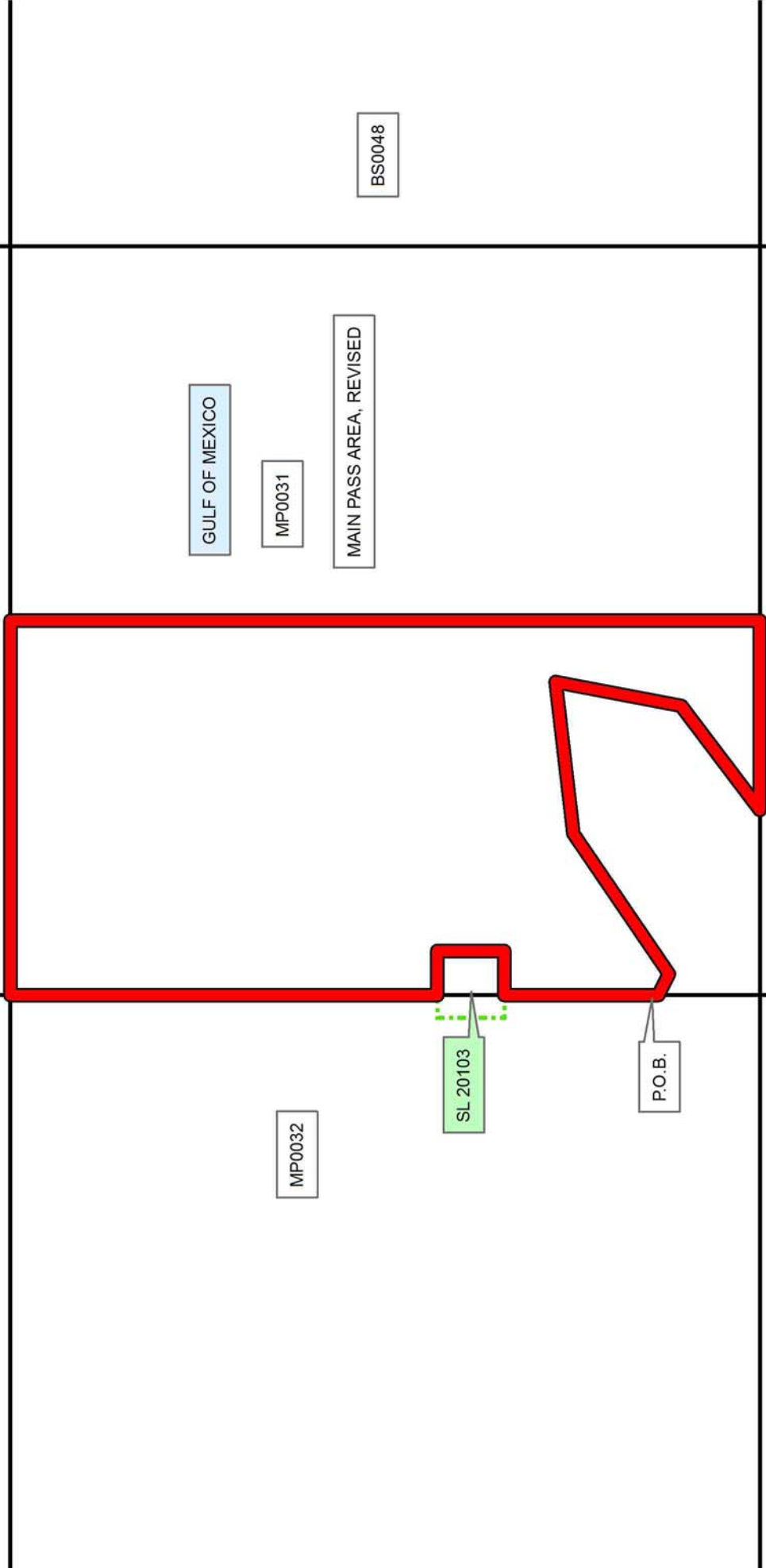
Bidder	Cash Payment	Price/Acre	Rental	Oil	Gas	Other

Legend

- 14020039
- Blocks
- Active_Leases

PLAQUEMINES

MP00026



GULF OF MEXICO

MP00031

MAIN PASS AREA, REVISED

BS00048

MP00036

MP00032

SL 20103

P.O.B.

TRACT 43758 - Portion of Block 32, Main Pass Area, Revised, Plaquemines Parish, Louisiana

All of the lands now or formerly constituting the beds and bottoms of all water bodies of every nature and description as to which title is vested in the State of Louisiana, together with all islands arising therein and other lands formed by accretion or by reliction, where allowed by law, excepting tax adjudicated lands, and not presently under mineral lease on February 12, 2014, situated in Plaquemines Parish, Louisiana, and more particularly described as follows: Beginning at a point having Coordinates of X = 2,605,850.00 and Y = 297,280.00, said point being on the West line of Block 32, Main Pass Area, Revised, said point also being the Northwest corner of State Lease No.1958, as amended; thence North 10,300.00 feet on and along said West line of said Block 32, Main Pass Area, Revised, to a point having Coordinates of X = 2,605,850.00 and Y = 307,580.00, said point being the Northwest corner of said Block 32, Main Pass Area, Revised; thence East 14,750.00 feet along the North line of said Block 32, Main Pass Area, Revised, to a point having Coordinates of X = 2,620,600.00 and Y = 307,580.00, said point being the Northeast corner of said Block 32, Main Pass Area, Revised; thence South 8,404.17 feet along the East line of said Block 32, Main Pass Area, Revised, to a point having Coordinates of X = 2,620,600.00 and Y = 299,175.83, said point being on the Northern boundary of State Lease No. 20103; thence along the Northern, Western and Southern boundaries of said State Lease No. 20103 the following courses: West 452.11 feet to a point having Coordinates of X = 2,620,147.89 and Y = 299,175.83, said point being the Northwest corner of said State Lease No. 20103; South 1,320.00 feet to a point having Coordinates of X = 2,620,147.89 and Y = 297,855.83, said point being the Southwest corner of said State Lease No. 20103; and East 452.11 feet to a point having Coordinates of X = 2,620,600.00 and Y = 297,855.83, said point being on said East line of said Block 32, Main Pass Area, Revised; thence South 575.83 feet along said East line of said Block 32, Main Pass Area, Revised, to a point having Coordinates of X = 2,620,600.00 and Y = 297,280.00, said point being the Northeast corner of said State Lease No. 1958, as amended; thence West 5,612.00 feet along the Northern boundary of said State Lease No. 1958, as amended, to a point having Coordinates of X = 2,614,988.00 and Y = 297,280.00, said point being the Southeast corner of State Lease No. 20781; thence North 1,895.83 feet along the Eastern boundary of said State Lease No. 20781, to a point having Coordinates of X = 2,614,988.00 and Y = 299,175.83, said point being the Southernmost corner of State Lease No. 20967; thence North 44 degrees 58 minutes 03 seconds East 6,462.37 feet along the Southeastern boundary of said State Lease No. 20967 to a point having Coordinates of X = 2,619,555.00 and Y = 303,748.00, said point being the Easternmost corner of said State Lease No.20967, said point also being the Southeast corner of State Lease No. 20482; thence along the Eastern, Northern and Western boundaries of said State Lease No. 20482 the following courses: North 2,778.00 feet to a point having Coordinates of X = 2,619,555.00 and Y = 306,526.00, said point being the Northeast corner of said State Lease No. 20482; West 3,800.00 feet to a point having Coordinates of X = 2,615,755.00 and Y =

306,526.00, said point being the Northwest corner of said State Lease No. 20482; and South 659.00 feet to a point having Coordinates of X = 2,615,755.00 and Y = 305,867.00, said point being the Northeast corner of State Lease No. 20968; thence along the Northern and Western boundaries of said State Lease No. 20968 the following courses: West 4,725.00 feet to a point having Coordinates of X = 2,611,030.00 and Y = 305,867.00, said point being the Northwest corner of said State Lease No. 20968; and South 1,475.00 feet to a point having Coordinates of X = 2,611,030.00 and Y = 304,392.00, said point being the Southwest corner of said State Lease No. 20968, said point also being on the Northern boundary of said State Lease No. 20781; thence along the Northern and Western boundaries of said State Lease No. 20781 the following courses: West 2,464.00 feet to a point having Coordinates of X = 2,608,566.00 and Y = 304,392.00, said point being the Northernmost Northwest corner of said State Lease No. 20781; South 4,935.43 feet to a point having Coordinates of X = 2,608,566.00 and Y = 299,456.57; West 1,000.00 feet to a point having Coordinates of X = 2,607,566.00 and Y = 299,456.57, said point being the Southernmost Northwest corner of said State Lease No. 20781; and South 2,176.57 feet to a point having Coordinates of X = 2,607,566.00 and Y = 297,280.00, said point being the Southwest corner of said State Lease No. 20781, said point also being on said Northern boundary of said State Lease No. 1958, as amended; thence West 1,716.00 feet on and along said Northern boundary of said State Lease No. 1958, as amended, to the point of beginning, containing approximately **1,722.18 acres**, all as more particularly outlined on a plat on file in the Office of Mineral Resources, Department of Natural Resources. All bearings, distances and coordinates are based on Louisiana Coordinate System of 1927, (North or South Zone), where applicable.

NOTE: The above description of the Tract nominated for lease has been provided and corrected, where required, exclusively by the nomination party. Any mineral lease selected from this Tract and awarded by the Louisiana State Mineral and Energy Board shall be without warranty of any kind, either express, implied, or statutory, including, but not limited to, the implied warranties of merchantability and fitness for a particular purpose. Should the mineral lease awarded by the Louisiana State Mineral and Energy Board be subsequently modified, cancelled or abrogated due to the existence of conflicting leases, operating agreements, private claims or other future obligations or conditions which may affect all or any portion of the leased Tract, it shall not relieve the Lessee of the obligation to pay any bonus due thereon to the Louisiana State Mineral and Energy Board, nor shall the Louisiana State Mineral and Energy Board be obligated to refund any consideration paid by the Lessor prior to such modification, cancellation, or abrogation, including, but not limited to, bonuses, rentals and royalties.

NOTE: The State of Louisiana does hereby reserve, and this lease shall be subject to, the imprescriptible right of surface use in the nature of a servitude in favor of the Department of Natural Resources, including its

Offices and Commissions, for the sole purpose of implementing, constructing, servicing and maintaining approved coastal zone management and/or restoration projects. Utilization of any and all rights derived under this lease by the mineral lessee, its agents, successors or assigns, shall not interfere with nor hinder the reasonable surface use by the Department of Natural Resources, its Offices or Commissions, as herein above reserved.

NOTE: This tract is located in an area designated by the Louisiana Legislature or the Wildlife and Fisheries Commission as a Public Oyster Seed Ground, Reservation, or area of Calcasieu or Sabine Lake. Proposed projects occurring in these areas will be evaluated on a case by case basis by Louisiana Department of Wildlife & Fisheries. Modifications to proposed project features including, but not limited to, access routes, well sites, flowlines, and appurtenant structures maybe required by the Louisiana Department of Wildlife and Fisheries. In addition, compensatory mitigation will be required to offset unavoidable habitat impacts.

Applicant: ROBERT A. SCHROEDER, INC.

Bidder	Cash Payment	Price/Acre	Rental	Oil	Gas	Other

Legend

- 14020038
- Blocks
- Active_Leases



0 3,000 Feet

PLAQUEMINES

MP0025

SL 20482

SL 20967

SL 20968

SL 20781

SL 20103

SL 1958

MP0032

GULF OF MEXICO

MP0033

P.O.B.

MP0031

MAIN PASS AREA, REVISED

TRACT 43759 - Portion of Block 36, Main Pass Area, Revised, Plaquemines Parish, Louisiana

All of the lands now or formerly constituting the beds and bottoms of all water bodies of every nature and description as to which title is vested in the State of Louisiana, together with all islands arising therein and other lands formed by accretion or by reliction, where allowed by law, excepting tax adjudicated lands, and not presently under mineral lease on February 12, 2014, situated in Plaquemines Parish, Louisiana, and more particularly described as follows: Beginning at a point having Coordinates of X = 2,620,600.00 and Y = 292,830.00, said point being the Northwest corner of Block 36, Main Pass Area, Revised; thence East 7,375.00 feet on and along the North line of said Block 36, Main Pass Area, Revised, to a point having Coordinates of X = 2,627,975.00 and Y = 292,830.00; thence South 14,373.21 feet to a point having Coordinates of X = 2,627,975.00 and Y = 278,456.79, said point being the Northwest corner of State Lease No. 20762; thence along the Western boundary of said State Lease No. 20762 the following courses: South 82 degrees 15 minutes 45 seconds West 9.28 feet to a point having Coordinates of X = 2,627,965.80 and Y = 278,455.54; and South 375.54 feet to a point having Coordinates of X = 2,627,965.80 and Y = 278,080.00, said point being the Southwest corner of said State Lease No. 20762, said point also being on the South line of said Block 36, Main Pass Area, Revised; thence West 7,365.80 feet along said South line of said Block 36, Main Pass Area, Revised, to a point having Coordinates of X = 2,620,600.00 and Y = 278,080.00, said point being the Southwest corner of said Block 36, Main Pass Area, Revised; thence North 14,750.00 feet along the West line of said Block 36, Main Pass Area, Revised, to the point of beginning, containing approximately **2,497.19 acres**, all as more particularly outlined on a plat on file in the Office of Mineral Resources, Department of Natural Resources. All bearings, distances and coordinates are based on Louisiana Coordinate System of 1927, (North or South Zone), where applicable.

NOTE: The above description of the Tract nominated for lease has been provided and corrected, where required, exclusively by the nomination party. Any mineral lease selected from this Tract and awarded by the Louisiana State Mineral and Energy Board shall be without warranty of any kind, either express, implied, or statutory, including, but not limited to, the implied warranties of merchantability and fitness for a particular purpose. Should the mineral lease awarded by the Louisiana State Mineral and Energy Board be subsequently modified, cancelled or abrogated due to the existence of conflicting leases, operating agreements, private claims or other future obligations or conditions which may affect all or any portion of the leased Tract, it shall not relieve the Lessee of the obligation to pay any bonus due thereon to the Louisiana State Mineral and Energy Board, nor shall the Louisiana State Mineral and Energy Board be obligated to refund any consideration paid by the Lessor prior to such modification, cancellation, or abrogation, including, but not limited to, bonuses, rentals and royalties.

NOTE: The State of Louisiana does hereby reserve, and this lease shall be subject to, the imprescriptible right of surface use in the nature of a servitude in favor of the Department of Natural Resources, including its Offices and Commissions, for the sole purpose of implementing, constructing, servicing and maintaining approved coastal zone management and/or restoration projects. Utilization of any and all rights derived under this lease by the mineral lessee, its agents, successors or assigns, shall not interfere with nor hinder the reasonable surface use by the Department of Natural Resources, its Offices or Commissions, as herein above reserved.

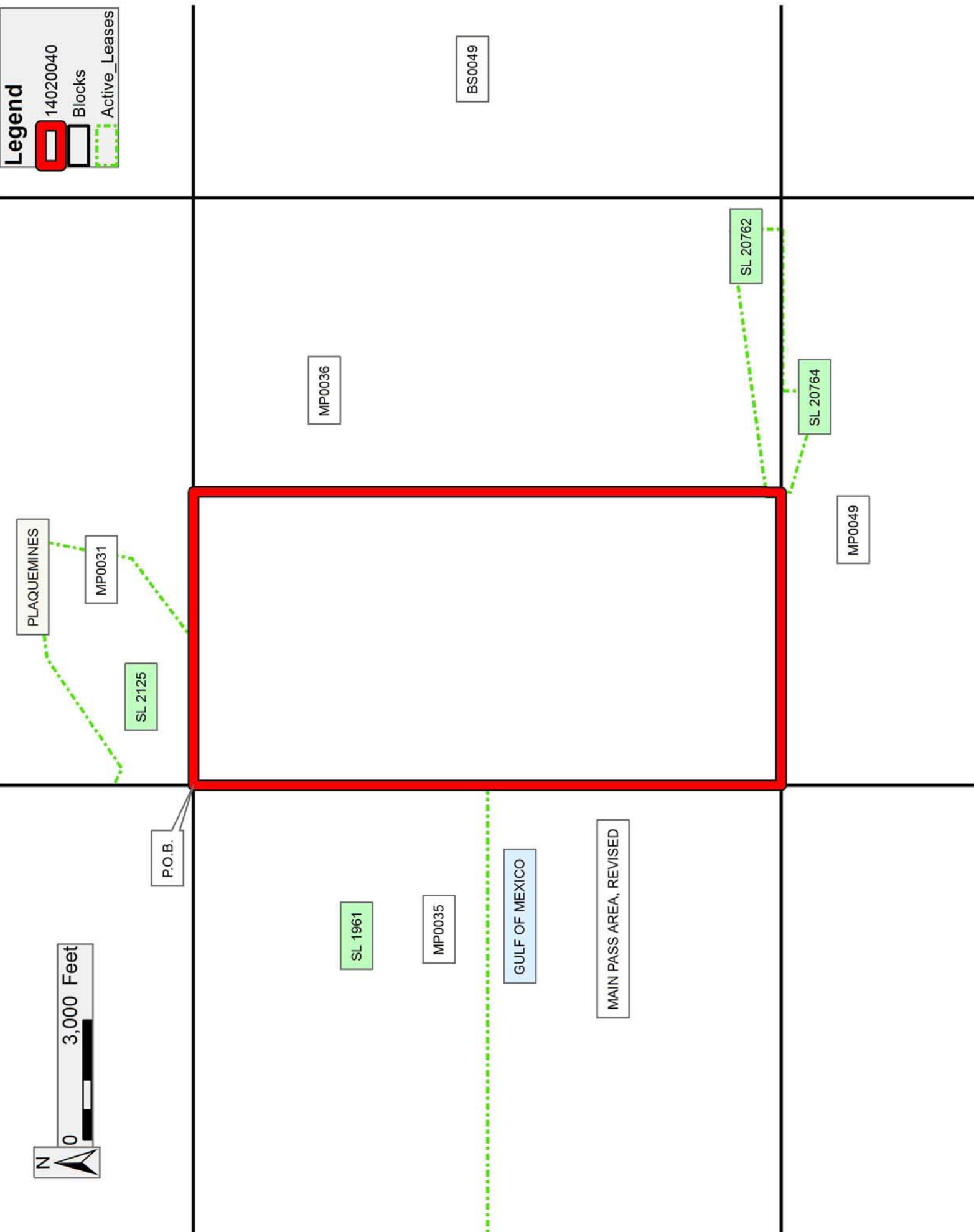
NOTE: This tract is located in an area designated by the Louisiana Legislature or the Wildlife and Fisheries Commission as a Public Oyster Seed Ground, Reservation, or area of Calcasieu or Sabine Lake. Proposed projects occurring in these areas will be evaluated on a case by case basis by Louisiana Department of Wildlife & Fisheries. Modifications to proposed project features including, but not limited to, access routes, well sites, flowlines, and appurtenant structures maybe required by the Louisiana Department of Wildlife and Fisheries. In addition, compensatory mitigation will be required to offset unavoidable habitat impacts.

Applicant: ROBERT A. SCHROEDER, INC.

Bidder	Cash Payment	Price/Acre	Rental	Oil	Gas	Other

Legend

- 14020040
- Blocks
- Active_Leases



TRACT 43760 - Plaquemines Parish, Louisiana

All of the lands now or formerly constituting the beds and bottoms of all water bodies of every nature and description as to which title is vested in the State of Louisiana, together with all islands arising therein and other lands formed by accretion or by reliction, where allowed by law, excepting tax adjudicated lands, and not presently under mineral lease on February 12, 2014, situated in Plaquemines Parish, Louisiana, and more particularly described as follows: Beginning at a the Northeast corner of State Lease No. 12036 having Coordinates of X = 2,475,500.00 and Y = 292,846.93; thence East 3,386.22 feet to a point having Coordinates of X = 2,478,886.22 and Y = 292,846.93; thence Southerly approximately 13,783 feet to a point on the Northern boundary of State Lease No. 2028; thence along the boundary of said State Lease No. 2028 the following courses: Westerly, Southerly, and Westerly to the Southeast corner of State Lease No. 20985; thence along the boundary of said State Lease No. 20985 the following courses: Northerly approximately 1,161 feet to a point having Coordinates of X = 2,474,176.78 and Y = 276,076.30; South 68 degrees 49 minutes 08 seconds West 1,921.59 feet to a point having Coordinates of X = 2,472,385.00 and Y = 275,382.00, and South 40 degrees 43 minutes 34 seconds West 639.28 feet to a point having Coordinates of X = 2,471,967.91 and Y = 274,897.53; thence North 7,019.05 feet to a point on the South line of State Lease No. 17378 having Coordinates of X = 2,471,967.91 and Y = 281,916.58; thence along the boundary of said State Lease No. 17378 the following courses: South 89 degrees 45 minutes 25 seconds East 1,579.55 feet to a point having Coordinates of X = 2,473,547.44 and Y = 281,909.88; North 3,271.93 feet to a point having Coordinates of X = 2,473,547.44 and Y = 285,181.81; North 67 degrees 57 minutes 57 seconds West 1,380.33 feet to a point having Coordinates of X = 2,472,267.93 and Y = 285,699.65, and West 300.02 feet to a point having Coordinates of X = 2,471,967.91 and Y = 285,699.65; thence North 1,601.76 feet to the Southeast corner of State Lease No. 9572 having Coordinates of X = 2,471,967.91 and Y = 287,301.41; thence along the boundary of said State Lease No. 9572 following courses: North 24 degrees 05 minutes 22 seconds West 174.15 feet to a point X = 2,471,896.83 and Y = 287,460.39; North 39 degrees 59 minutes 31 seconds West 218.13 feet to a point having Coordinates of X = 2,471,756.64 and Y = 287,627.51; North 51 degrees 18 minutes 29 seconds West 277.70 feet to a point having Coordinates of X = 2,471,539.89 and Y = 287,801.11, and North 65 degrees 22 minutes 17 seconds West 109.95 feet to the Southeast corner of State Lease No. 9570, as amended, having Coordinates of X = 2,471,439.94 and Y = 287,846.93; thence along the boundary of said State Lease No. 9570, as amended, the following courses: North 65 degrees 22 minutes 34 seconds West 188.98 feet to a point having Coordinates of X = 2,471,268.15 and Y = 287,925.67; North 89 degrees 16 minutes 27 seconds West 1,018.41 feet to a point having Coordinates of X = 2,470,249.82 and Y = 287,938.57; North 79 degrees 28 minutes 19 seconds West 256.29 feet to a point having Coordinates of X = 2,469,997.84 and Y = 287,985.40; North 72 degrees 46 minutes 10 seconds West 317.74 feet to a point having Coordinates of X = 2,469,694.36 and Y = 288,079.52; North 66 degrees 03 minutes 24 seconds West 337.70 feet to a point having Coordinates of X =

2,469,385.72 and Y = 288,216.57; North 66 degrees 20 minutes 16 seconds West 370.63 feet to a point having Coordinates of X = 2,469,046.25 and Y = 288,365.32; North 70 degrees 36 minutes 20 seconds West 261.00 feet to a point having Coordinates of X = 2,468,800.06 and Y = 288,451.99; North 75 degrees 44 minutes 12 seconds West 223.40 feet to a point having Coordinates of X = 2,468,583.55 and Y = 288,507.03; North 79 degrees 26 minutes 40 seconds West 369.29 feet to a point having Coordinates of X = 2,468,220.51 and Y = 288,574.68, and North 83 degrees 59 minutes 38 seconds West 221.73 feet to a point on the East line of State Lease No. 9571, as amended, having Coordinates of X = 2,468,000.00 and Y = 288,597.88; thence along the boundary of said State Lease No. 9571, as amended, the following courses: North 899.05 feet to a point having Coordinates of X = 2,468,000.00 and Y = 289,496.93 and West 1,864.91 feet to the Southeast corner of State Lease No. 8512, as amended, having Coordinates of X = 2,466,135.09 and Y = 289,496.93; thence North 26 degrees 08 minutes 33 seconds East 1,756.29 feet along the Eastern boundary of said State Lease No. 8512, as amended, to its Northeast corner having Coordinates of X = 2,466,908.92 and Y = 291,073.57; thence South 89 degrees 28 minutes 07 seconds East 2,607.06 feet to the Southwest corner of said State Lease No. 12036 having Coordinates of X = 2,469,515.87 and Y = 291,049.37; thence along the boundary of said State Lease No. 12036 the following courses: South 55 degrees 21 minutes 12 seconds East 7,274.00 feet to a point having Coordinates of X = 2,475,500.00 and Y = 286,914.00 and North 5,932.93 feet to the point of beginning, **LESS AND EXCEPT** that portion, if any, of State Lease No. 2028 which may lie within the above described tract, and **LESS AND EXCEPT** any right, title, and interest in lands owned by and not under lease from the State of Louisiana, on behalf of the Plaquemines Parish School Board, situated in Section 16, Township 19 South, Range 26 East, Plaquemines Parish, Louisiana, contained within the above described tract, containing approximately **1,915 acres**, all as more particularly outlined on a plat on file in the Office of Mineral Resources, Department of Natural Resources. All bearings, distances and coordinates are based on Louisiana Coordinate System of 1927, (North or South Zone), where applicable.

NOTE: The above description of the Tract nominated for lease has been provided and corrected, where required, exclusively by the nomination party. Any mineral lease selected from this Tract and awarded by the Louisiana State Mineral and Energy Board shall be without warranty of any kind, either express, implied, or statutory, including, but not limited to, the implied warranties of merchantability and fitness for a particular purpose. Should the mineral lease awarded by the Louisiana State Mineral and Energy Board be subsequently modified, cancelled or abrogated due to the existence of conflicting leases, operating agreements, private claims or other future obligations or conditions which may affect all or any portion of the leased Tract, it shall not relieve the Lessee of the obligation to pay any bonus due thereon to the Louisiana State Mineral and Energy Board, nor shall the Louisiana State Mineral and Energy Board be obligated to refund any consideration paid by the Lessor prior to such

modification, cancellation, or abrogation, including, but not limited to, bonuses, rentals and royalties.

NOTE: The State of Louisiana does hereby reserve, and this lease shall be subject to, the imprescriptible right of surface use in the nature of a servitude in favor of the Department of Natural Resources, including its Offices and Commissions, for the sole purpose of implementing, constructing, servicing and maintaining approved coastal zone management and/or restoration projects. Utilization of any and all rights derived under this lease by the mineral lessee, its agents, successors or assigns, shall not interfere with nor hinder the reasonable surface use by the Department of Natural Resources, its Offices or Commissions, as herein above reserved.

Applicant: CAILLIER ENERGY GROUP

Bidder	Cash Payment	Price/Acre	Rental	Oil	Gas	Other

Legend

- 14020010
- Active_Leases



PLAQUEMINES

BAY BATISTE

P.O.B.

SL 12499

SL 12036

SL 2028

SL 8512

SL 9571

SL 9570

SL 9572

SL 17378

SL 20985

BARATARIA BAY

TRACT 43761 - Plaquemines Parish, Louisiana

All of the lands now or formerly constituting the beds and bottoms of all water bodies of every nature and description as to which title is vested in the State of Louisiana, together with all islands arising therein and other lands formed by accretion or by reliction, where allowed by law, excepting tax adjudicated lands, and not presently under mineral lease on February 12, 2014, situated in Plaquemines Parish, Louisiana, and more particularly described as follows: Beginning at a point having Coordinates of X = 2,451,166.22 and Y = 282,900.00; thence North 9,034.42 feet to a point having Coordinates of X = 2,451,166.22 and Y = 291,934.42; thence East 9,240.00 feet to the Southwest corner of State Lease No. 8512, as amended, having Coordinates of X = 2,460,406.22 and Y = 291,934.42; thence South 9,034.42 feet to a point having Coordinates of X = 2,460,406.22 and Y = 282,900.00; thence West 9,240.00 feet to point of beginning, containing approximately **1,544 acres**, all as more particularly outlined on a plat on file in the Office of Mineral Resources, Department of Natural Resources. All bearings, distances and coordinates are based on Louisiana Coordinate System of 1927, (North or South Zone), where applicable.

NOTE: The above description of the Tract nominated for lease has been provided and corrected, where required, exclusively by the nomination party. Any mineral lease selected from this Tract and awarded by the Louisiana State Mineral and Energy Board shall be without warranty of any kind, either express, implied, or statutory, including, but not limited to, the implied warranties of merchantability and fitness for a particular purpose. Should the mineral lease awarded by the Louisiana State Mineral and Energy Board be subsequently modified, cancelled or abrogated due to the existence of conflicting leases, operating agreements, private claims or other future obligations or conditions which may affect all or any portion of the leased Tract, it shall not relieve the Lessee of the obligation to pay any bonus due thereon to the Louisiana State Mineral and Energy Board, nor shall the Louisiana State Mineral and Energy Board be obligated to refund any consideration paid by the Lessor prior to such modification, cancellation, or abrogation, including, but not limited to, bonuses, rentals and royalties.

NOTE: The State of Louisiana does hereby reserve, and this lease shall be subject to, the imprescriptible right of surface use in the nature of a servitude in favor of the Department of Natural Resources, including its Offices and Commissions, for the sole purpose of implementing, constructing, servicing and maintaining approved coastal zone management and/or restoration projects. Utilization of any and all rights derived under this lease by the mineral lessee, its agents, successors or assigns, shall not interfere with nor hinder the reasonable surface use by the Department of Natural Resources, its Offices or Commissions, as herein above reserved.

Applicant: CAILLIER ENERGY GROUP

Bidder	Cash Payment	Price/Acre	Rental	Oil	Gas	Other

Legend

14020009



Active_Leases



0 2,000 Feet

PLAQUEMINES

WILKINSON BAYOU

SL 8512

BARATARIA BAY

P.O.B.

TRACT 43762 - Plaquemines Parish, Louisiana

All of the lands now or formerly constituting the beds and bottoms of all water bodies of every nature and description as to which title is vested in the State of Louisiana, together with all islands arising therein and other lands formed by accretion or by reliction, where allowed by law, excepting tax adjudicated lands, and not presently under mineral lease on February 12, 2014, situated in Plaquemines Parish, Louisiana, and more particularly described as follows: Beginning at a point having Coordinates of X = 2,471,967.91 and Y = 279,200.00; thence West 11,561.69 feet to a point having Coordinates of X = 2,460,406.22 and Y = 279,200.00; thence North 12,734.42 feet to a the Southwest corner of State Lease No. 8512, as amended, having Coordinates of X = 2,460,406.22 and Y = 291,934.42; thence along the boundary of said State Lease No. 8512, as amended, the following courses: South 62 degrees 58 minutes 06 seconds East 3,732.83 feet to a point having Coordinates of X = 2,463,731.26 and Y = 290,237.91; North 87 degrees 24 minutes 35 seconds East 392.30 feet to a point having Coordinates of X = 2,464,123.15 and Y = 290,255.64; South 85 degrees 16 minutes 00 seconds East 300.06 feet to a point having Coordinates of X = 2,464,422.19 and Y = 290,230.88; South 78 degrees 48 minutes 21 seconds East 240.61 feet to a point having Coordinates of X = 2,464,658.22 and Y = 290,184.17; South 75 degrees 57 minutes 47 seconds East 218.56 feet to a point having Coordinates of X = 2,464,870.26 and Y = 290,131.15; South 70 degrees 06 minutes 25 seconds East 293.54 feet to a point having Coordinates of X = 2,465,146.28 and Y = 290,031.27; South 57 degrees 55 minutes 59 seconds East 364.28 feet to a point having Coordinates of X = 2,465,454.98 and Y = 289,837.87; South 49 degrees 40 minutes 50 seconds East 256.67 feet to a point having Coordinates of X = 2,465,650.68 and Y = 289,671.79, and South 44 degrees 36 minutes 36 seconds East 245.63 feet to the Northwest corner of State Lease No. 9571, as amended, having Coordinates of X = 2,465,823.18 and Y = 289,496.93; thence along the boundary of said State Lease No. 9571, as amended, the following courses: South 44 degrees 36 minutes 38 seconds East 296.58 feet to a point having Coordinates of X = 2,466,031.46 and Y = 289,285.80; South 42 degrees 30 minutes 14 seconds East 122.58 feet to a point having Coordinates of X = 2,466,114.28 and Y = 289,195.43; South 50 degrees 37 minutes 45 seconds East 233.35 feet to a point having Coordinates of X = 2,466,294.67 and Y = 289,047.41; South 54 degrees 53 minutes 40 seconds East 318.30 feet to a point having Coordinates of X = 2,466,555.07 and Y = 288,864.36; South 57 degrees 56 minutes 58 seconds East 631.81 feet to a point having Coordinates of X = 2,467,090.58 and Y = 288,529.08; South 74 degrees 28 minutes 11 seconds West 139.53 feet to a point having Coordinates of X = 2,466,956.15 and Y = 288,491.72; South 74 degrees 14 minutes 47 seconds West 282.50 feet to a point having Coordinates of X = 2,466,684.26 and Y = 288,415.02; South 65 degrees 59 minutes 12 seconds West 533.60 feet to a point having Coordinates of X = 2,466,196.84 and Y = 288,197.87; South 65 degrees 17 minutes 44 seconds West 487.01 feet to a point having Coordinates of X = 2,465,754.40 and Y = 287,994.33, and South 73 degrees 32 minutes 13 seconds West 56.73 feet to the Northeast corner of State Lease No. 8512, as amended, having Coordinates of X = 2,465,700.00 and Y =

287,978.25; thence along the boundary of said State Lease No. 8512, as amended, the following courses: South 73 degrees 32 minutes 13 seconds West 221.08 feet to a point having Coordinates of X = 2,465,487.98 and Y = 287,915.60; South 83 degrees 41 minutes 52 seconds West 140.11 feet to a point having Coordinates of X = 2,465,348.72 and Y = 287,900.22; North 89 degrees 57 minutes 52 seconds West 209.96 feet to a point having Coordinates of X = 2,465,138.76 and Y = 287,900.35; North 85 degrees 26 minutes 24 seconds West 138.99 feet to a point having Coordinates of X = 2,465,000.21 and Y = 287,911.40; North 80 degrees 18 minutes 54 seconds West 127.32 feet to a point having Coordinates of X = 2,464,874.70 and Y = 287,932.82; North 69 degrees 32 minutes 37 seconds West 166.13 feet to a point having Coordinates of X = 2,464,719.05 and Y = 287,990.88; North 62 degrees 31 minutes 26 seconds West 300.64 feet to a point having Coordinates of X = 2,464,452.32 and Y = 288,129.59; North 62 degrees 41 minutes 32 seconds West 243.18 feet to a point having Coordinates of X = 2,464,236.24 and Y = 288,241.15; South 00 degrees 15 minutes 21 seconds East 1,271.57 feet to a point having Coordinates of X = 2,464,241.92 and Y = 286,970.11; South 85 degrees 25 minutes 00 seconds East 177.95 feet to a point having Coordinates of X = 2,464,419.30 and Y = 286,955.89; South 89 degrees 28 minutes 26 seconds East 391.06 feet to a point having Coordinates of X = 2,464,810.34 and Y = 286,952.30, and North 80 degrees 14 minutes 51 seconds East 902.70 feet to the Southwest corner of said State Lease No. 9571, as amended, having Coordinates of X = 2,465,700.00 and Y = 287,105.21; thence along the boundary of said State Lease No. 9571, as amended, the following courses: North 80 degrees 14 minutes 35 seconds East 2,227.04 feet to a point having Coordinates of X = 2,467,894.86 and Y = 287,482.62 and North 83 degrees 25 minutes 07 seconds East 105.84 feet to a the Southwest corner of State Lease No. 9572, as amended, having Coordinates of X = 2,468,000.00 and Y = 287,494.75; thence along the boundary of said State Lease No. 9572, as amended, the following courses: North 83 degrees 25 minutes 25 seconds East 204.28 feet to a point having Coordinates of X = 2,468,202.94 and Y = 287,518.15; North 89 degrees 45 minutes 07 seconds East 293.25 feet to a point having Coordinates of X = 2,468,496.18 and Y = 287,519.42; South 84 degrees 22 minutes 02 seconds East 369.22 feet to a point having Coordinates of X = 2,468,863.62 and Y = 287,783.18; South 77 degrees 11 minutes 13 seconds East 288.23 feet to a point having Coordinates of X = 2,469,144.67 and Y = 287,419.26; South 78 degrees 19 minutes 57 seconds East 525.58 feet to a point having Coordinates of X = 2,469,659.39 and Y = 287,312.97; South 83 degrees 18 minutes 03 seconds East 517.33 feet to a point having Coordinates of X = 2,470,173.19 and Y = 287,252.62; South 88 degrees 20 minutes 31 seconds East 483.12 feet to a point having Coordinates of X = 2,470,656.11 and Y = 287,238.64; North 88 degrees 43 minutes 47 seconds East 595.95 feet to a point having Coordinates of X = 2,471,251.91 and Y = 287,251.85, and North 86 degrees 02 minutes 26 seconds East 717.71 feet to a point having Coordinates of X = 2,471,967.91 and Y = 287,301.41; thence South 1,601.76 feet to a point on the Northern boundary of State Lease No. 17378 having Coordinates of X = 2,471,967.91 and Y = 285,699.65; thence West 3,567.91 feet along the Northern boundary of State Lease No. 17378 to

the Northeast corner of State Lease No. 17376 having Coordinates of X = 2,468,400.00 and Y = 285,699.65; thence along the boundary of said State Lease No. 17376 the following courses: West 3,027.84 feet to a point a having Coordinates of X = 2,465,372.16 and Y = 285,699.65; South 3,755.10 feet to a point having Coordinates of X = 2,465,372.16 and Y = 281,944.55, and South 89 degrees 45 minutes 25 seconds East 3,027.87 feet to the Southwest corner of said State Lease No. 17378 having Coordinates of X = 2,468,400.00 and Y = 281,931.71; thence South 89 degrees 45 minutes 25 seconds East 3,567.94 feet along the South line of said State Lease No. 17378 to its Southeast corner having Coordinates of X = 2,471,967.91 and Y = 281,916.58; thence South 2,716.58 feet to the point of beginning, containing approximately **1,633 acres**, all as more particularly outlined on a plat on file in the Office of Mineral Resources, Department of Natural Resources. All bearings, distances and coordinates are based on Louisiana Coordinate System of 1927, (North or South Zone), where applicable.

NOTE: The above description of the Tract nominated for lease has been provided and corrected, where required, exclusively by the nomination party. Any mineral lease selected from this Tract and awarded by the Louisiana State Mineral and Energy Board shall be without warranty of any kind, either express, implied, or statutory, including, but not limited to, the implied warranties of merchantability and fitness for a particular purpose. Should the mineral lease awarded by the Louisiana State Mineral and Energy Board be subsequently modified, cancelled or abrogated due to the existence of conflicting leases, operating agreements, private claims or other future obligations or conditions which may affect all or any portion of the leased Tract, it shall not relieve the Lessee of the obligation to pay any bonus due thereon to the Louisiana State Mineral and Energy Board, nor shall the Louisiana State Mineral and Energy Board be obligated to refund any consideration paid by the Lessor prior to such modification, cancellation, or abrogation, including, but not limited to, bonuses, rentals and royalties.

NOTE: The State of Louisiana does hereby reserve, and this lease shall be subject to, the imprescriptible right of surface use in the nature of a servitude in favor of the Department of Natural Resources, including its Offices and Commissions, for the sole purpose of implementing, constructing, servicing and maintaining approved coastal zone management and/or restoration projects. Utilization of any and all rights derived under this lease by the mineral lessee, its agents, successors or assigns, shall not interfere with nor hinder the reasonable surface use by the Department of Natural Resources, its Offices or Commissions, as herein above reserved.

Applicant: CAILLIER ENERGY GROUP

Bidder	Cash Payment	Price/Acre	Rental	Oil	Gas	Other

