

TRACT 43763 - Jefferson and Plaquemines Parishes, Louisiana

All of the lands now or formerly constituting the beds and bottoms of all water bodies of every nature and description as to which title is vested in the State of Louisiana, together with all islands arising therein and other lands formed by accretion or by reliction, where allowed by law, excepting tax adjudicated lands, and not presently under mineral lease on February 12, 2014, situated in Jefferson and Plaquemines Parishes, Louisiana, and more particularly described as follows: Beginning at a point having Coordinates of X = 2,441,926.22 and Y = 291,934.42; thence South 908.04 feet to a point on the Northern boundary of State Lease No. 19384 having Coordinates of X = 2,441,926.22 and Y = 291,026.38; thence along the boundary of said State Lease No. 19384 the following courses: South 83 degrees 37 minutes 00 seconds West 1,407.56 feet to a point having Coordinates of X = 2,440,527.39 and Y = 290,869.89; South 06 degrees 23 minutes 00 seconds East 1,866.76 feet to a point having Coordinates of X = 2,440,734.94 and Y = 289,014.70, and North 83 degrees 52 minutes 36 seconds East 1,200.55 feet to a point having Coordinates of X = 2,441,926.22 and Y = 289,163.57; thence South 10,383.75 feet to a point on the Northern boundary of State Lease No. 3035, as amended, having Coordinates of X = 2,441,926.22 and Y = 278,779.83; thence along the boundary of said State Lease No. 3035, as amended, the following courses: North 60 degrees 13 minutes 28 seconds West 312.47 feet to a point having Coordinates of X = 2,441,655.00 and Y = 278,935.00; North 72 degrees 27 minutes 04 seconds West 1,227.11 feet to a point having Coordinates of X = 2,440,485.00 and Y = 279,305.00; North 88 degrees 07 minutes 33 seconds West 1,375.87 feet to a point having Coordinates of X = 2,439,109.87 and Y = 279,350.00; South 00 degrees 41 minutes 53 seconds East 141.04 feet to a point having Coordinates of X = 2,439,111.58 and Y = 279,208.97; South 00 degrees 41 minutes 53 seconds East 1,333.47 feet to the Northeast corner of State Lease No. 14374 having Coordinates of X = 2,439,127.83 and Y = 277,875.60; thence West 1,002.81 feet along the North line of said State Lease No. 14374 to its Northwest corner, said corner also being the Northeast corner of State Lease No. 14534, having Coordinates of X = 2,438,125.02 and Y = 277,875.60; thence along the boundary of said State Lease No. 14534 the following courses: South 00 degrees 38 minutes 43 seconds East 333.69 feet to a point having Coordinates of X = 2,438,128.78 and Y = 277,541.93; West 2,996.76 feet to a point having Coordinates of X = 2,435,132.02 and Y = 277,541.93, and South 2,009.62 feet to the Northeast corner of State Lease No. 15631 having Coordinates of X = 2,435,132.02 and Y = 275,532.31; thence West 1,382.47 feet along the North line of said State Lease No. 15631 to a point having Coordinates of X = 2,433,749.55 and Y = 275,532.31; thence North 16,292.37 feet to a point on the Southern boundary of State Lease No. 13407, as amended, having Coordinates of X = 2,433,749.55 and Y = 291,824.68; thence along the boundary of said State Lease No. 13407, as amended, the following courses: South 69 degrees 10 minutes 45 seconds East 407.04 feet to a point having Coordinates of X = 2,434,130.00 and Y = 291,680.00 and Northeasterly on an arc having a radius of 13,000.00 feet and a center at X = 2,424,693.16 and Y = 300,621.25 to a point having Coordinates of X = 2,434,364.71 and Y = 291,934.42; thence East 7,561.51 feet to the point of beginning,

containing approximately **2,443 acres**, all as more particularly outlined on a plat on file in the Office of Mineral Resources, Department of Natural Resources. All bearings, distances and coordinates are based on Louisiana Coordinate System of 1927, (North or South Zone), where applicable.

NOTE: The above description of the Tract nominated for lease has been provided and corrected, where required, exclusively by the nomination party. Any mineral lease selected from this Tract and awarded by the Louisiana State Mineral and Energy Board shall be without warranty of any kind, either express, implied, or statutory, including, but not limited to, the implied warranties of merchantability and fitness for a particular purpose. Should the mineral lease awarded by the Louisiana State Mineral and Energy Board be subsequently modified, cancelled or abrogated due to the existence of conflicting leases, operating agreements, private claims or other future obligations or conditions which may affect all or any portion of the leased Tract, it shall not relieve the Lessee of the obligation to pay any bonus due thereon to the Louisiana State Mineral and Energy Board, nor shall the Louisiana State Mineral and Energy Board be obligated to refund any consideration paid by the Lessor prior to such modification, cancellation, or abrogation, including, but not limited to, bonuses, rentals and royalties.

NOTE: The State of Louisiana does hereby reserve, and this lease shall be subject to, the imprescriptible right of surface use in the nature of a servitude in favor of the Department of Natural Resources, including its Offices and Commissions, for the sole purpose of implementing, constructing, servicing and maintaining approved coastal zone management and/or restoration projects. Utilization of any and all rights derived under this lease by the mineral lessee, its agents, successors or assigns, shall not interfere with nor hinder the reasonable surface use by the Department of Natural Resources, its Offices or Commissions, as herein above reserved.

Applicant: CAILLIER ENERGY GROUP

Bidder	Cash Payment	Price/Acre	Rental	Oil	Gas	Other

Legend

14020007

Active_Leases

Counties



PLAQUEMINES

BARATARIA BAY

JEFFERSON

P.O.B.

SL 19384

SL 3035

SL 14374

SL 14534

SL 13407

SL 15631



3,000 Feet

TRACT 43764 - Plaquemines Parish, Louisiana

All of the lands now or formerly constituting the beds and bottoms of all water bodies of every nature and description as to which title is vested in the State of Louisiana, together with all islands arising therein and other lands formed by accretion or by reliction, where allowed by law, excepting tax adjudicated lands, and not presently under mineral lease on February 12, 2014, situated in Plaquemines Parish, Louisiana, and more particularly described as follows: Beginning at a point having Coordinates of X = 2,451,166.22 and Y = 282,900.00; thence West 9,240.00 feet to a point having Coordinates of X = 2,441,926.22 and Y = 282,900.00; thence North 6,263.57 feet to a point on the Southern boundary of State Lease No. 19384, as amended, having Coordinates of X = 2,441,926.22 and Y = 289,163.57; along the boundary of said State Lease No. 19384, as amended, the following courses: North 82 degrees 52 minutes 36 seconds East 2,482.77 feet to a point having Coordinates of X = 2,444,389.83 and Y = 289,471.45; North 06 degrees 23 minutes 00 seconds West 1,819.19 feet to a point having Coordinates of X = 2,444,187.57 and Y = 291,279.37, and South 83 degrees 37 minutes 00 West 2,275.46 feet to a point having Coordinates of X = 2,441,926.22 and Y = 291,026.38; thence North 908.04 feet to a point having Coordinate of X = 2,441,926.22 and Y = 291,934.42; thence East 9,240.00 feet to a point having Coordinates of X = 2,451,166.22 and Y = 291,934.42; thence South 9,034.42 feet to the point of beginning, containing approximately **1,540 acres**, all as more particularly outlined on a plat on file in the Office of Mineral Resources, Department of Natural Resources. All bearings, distances and coordinates are based on Louisiana Coordinate System of 1927, (North or South Zone), where applicable.

NOTE: The above description of the Tract nominated for lease has been provided and corrected, where required, exclusively by the nomination party. Any mineral lease selected from this Tract and awarded by the Louisiana State Mineral and Energy Board shall be without warranty of any kind, either express, implied, or statutory, including, but not limited to, the implied warranties of merchantability and fitness for a particular purpose. Should the mineral lease awarded by the Louisiana State Mineral and Energy Board be subsequently modified, cancelled or abrogated due to the existence of conflicting leases, operating agreements, private claims or other future obligations or conditions which may affect all or any portion of the leased Tract, it shall not relieve the Lessee of the obligation to pay any bonus due thereon to the Louisiana State Mineral and Energy Board, nor shall the Louisiana State Mineral and Energy Board be obligated to refund any consideration paid by the Lessor prior to such modification, cancellation, or abrogation, including, but not limited to, bonuses, rentals and royalties.

NOTE: The State of Louisiana does hereby reserve, and this lease shall be subject to, the imprescriptible right of surface use in the nature of a servitude in favor of the Department of Natural Resources, including its Offices and Commissions, for the sole purpose of implementing, constructing, servicing and maintaining approved coastal zone management

and/or restoration projects. Utilization of any and all rights derived under this lease by the mineral lessee, its agents, successors or assigns, shall not interfere with nor hinder the reasonable surface use by the Department of Natural Resources, its Offices or Commissions, as herein above reserved.

Applicant: CAILLIER ENERGY GROUP

Bidder	Cash Payment	Price/Acre	Rental	Oil	Gas	Other

Legend

14020008



Active_Leases



PLAQUEMINES

P.O.B.

SL 19384

BARATARIA BAY



TRACT 43765 - Plaquemines Parish, Louisiana

All of the lands now or formerly constituting the beds and bottoms of all water bodies of every nature and description as to which title is vested in the State of Louisiana, together with all islands arising therein and other lands formed by accretion or by reliction, where allowed by law, excepting tax adjudicated lands, and not presently under mineral lease on February 12, 2014, situated in Plaquemines Parish, Louisiana, and more particularly described as follows: Beginning at a point having Coordinates of X = 2,451,166.22 and Y = 282,900.00; thence East 9,240.00 feet to a point having Coordinates of X = 2,460,406.22 and Y = 282,900.00; thence South 9,423.00 feet to a point on the Northern boundary of State Lease No. 21082 having Coordinates of X = 2,460,406.22 and Y = 273,477.00; thence West 422.22 feet along the Northern boundary of said State Lease No. 21082 to its Northwest corner having Coordinates of X = 2,459,984.00 and Y = 273,477.00; thence West 8,817.78 feet to a point having Coordinates of X = 2,451,166.22 and Y = 273,477.00; thence North 9,423.00 feet to the Point of Beginning, containing approximately **1,990 acres**, all as more particularly outlined on a plat on file in the Office of Mineral Resources, Department of Natural Resources. All bearings, distances and coordinates are based on Louisiana Coordinate System of 1927, (North or South Zone), where applicable.

NOTE: The above description of the Tract nominated for lease has been provided and corrected, where required, exclusively by the nomination party. Any mineral lease selected from this Tract and awarded by the Louisiana State Mineral and Energy Board shall be without warranty of any kind, either express, implied, or statutory, including, but not limited to, the implied warranties of merchantability and fitness for a particular purpose. Should the mineral lease awarded by the Louisiana State Mineral and Energy Board be subsequently modified, cancelled or abrogated due to the existence of conflicting leases, operating agreements, private claims or other future obligations or conditions which may affect all or any portion of the leased Tract, it shall not relieve the Lessee of the obligation to pay any bonus due thereon to the Louisiana State Mineral and Energy Board, nor shall the Louisiana State Mineral and Energy Board be obligated to refund any consideration paid by the Lessor prior to such modification, cancellation, or abrogation, including, but not limited to, bonuses, rentals and royalties.

NOTE: The State of Louisiana does hereby reserve, and this lease shall be subject to, the imprescriptible right of surface use in the nature of a servitude in favor of the Department of Natural Resources, including its Offices and Commissions, for the sole purpose of implementing, constructing, servicing and maintaining approved coastal zone management and/or restoration projects. Utilization of any and all rights derived under this lease by the mineral lessee, its agents, successors or assigns, shall not interfere with nor hinder the reasonable surface use by the Department of Natural Resources, its Offices or Commissions, as herein above reserved.

Applicant: CAILLIER ENERGY GROUP

Bidder	Cash Payment	Price/Acre	Rental	Oil	Gas	Other

Legend

14020012



Active_Leases



PLAQUEMINES

BAY JIMMY

P.O.B.

BARATARIA BAY

SL 21082

TRACT 43766 - Plaquemines Parish, Louisiana

All of the lands now or formerly constituting the beds and bottoms of all water bodies of every nature and description as to which title is vested in the State of Louisiana, together with all islands arising therein and other lands formed by accretion or by reliction, where allowed by law, excepting tax adjudicated lands, and not presently under mineral lease on February 12, 2014, situated in Plaquemines Parish, Louisiana, and more particularly described as follows: Beginning at a point having Coordinates of X = 2,451,166.22 and Y = 282,900.00; thence South 9,423.00 feet to a point having Coordinates of X = 2,451,166.22 and Y = 273,477.00; thence West 5,854.14 feet to a point on the Eastern boundary of State Lease No. 3035, as amended, having Coordinates of X = 2,445,312.08 and Y = 273,477.00; thence along the boundary of State Lease No. 3035, as amended, the following courses: North 30 degrees 27 minutes 46 seconds East 281.92 feet to a point having Coordinates of X = 2,445,455.00 and Y = 273,720.00; North 20 degrees 28 minutes 03 seconds East 757.84 feet to a point having Coordinates of X = 2,445,720.00 and Y = 274,430.00; North 14 degrees 25 minutes 15 seconds East 361.39 feet to a point having Coordinates of X = 2,445,810.00 and Y = 274,780.00; North 08 degrees 30 minutes 17 seconds East 540.95 feet to a point having Coordinates of X = 2,445,890.00 and Y = 275,315.00; North 00 degrees 52 minutes 53 seconds East 325.04 feet to a point having Coordinates of X = 2,445,895.00 and Y = 275,640.00; North 11 degrees 01 minutes 46 seconds West 601.10 feet to a point having Coordinates of X = 2,445,780.00 and Y = 276,230.00; North 23 degrees 22 minutes 27 seconds West 642.75 feet to a point having Coordinates of X = 2,445,525.00 and Y = 276,820.00; North 29 degrees 58 minutes 54 seconds West 450.25 feet to a point having Coordinates of X = 2,445,300.00 and Y = 277,210.00; North 36 degrees 28 minutes 09 seconds West 429.01 feet to a point having Coordinates of X = 2,445,045.00 and Y = 277,555.00; North 46 degrees 50 minutes 51 seconds West 328.98 feet to a point having Coordinates of X = 2,444,805.00 and Y = 277,780.00; South 42 degrees 21 minutes 27 seconds West 690.16 feet to a point having Coordinates of X = 2,444,340.00 and Y = 277,270.00; North 44 degrees 39 minutes 25 seconds West 590.44 feet to a point having Coordinates of X = 2,443,925.00 and Y = 277,690.00; North 53 degrees 26 minutes 25 seconds West 554.01 feet to a point having Coordinates of X = 2,443,480.00 and Y = 278,020.00; North 63 degrees 26 minutes 06 seconds West 245.97 feet to a point having Coordinates of X = 2,443,260.00 and Y = 278,130.00; North 73 degrees 04 minutes 21 seconds West 480.82 feet to a point having Coordinates of X = 2,442,800.01 and Y = 278,270.00; North 57 degrees 15 minutes 58 seconds West 166.45 feet to a point having Coordinates of X = 2,442,660.00 and Y = 278,360.00, and North 60 degrees 13 minutes 28 seconds West 845.39 feet to a point having Coordinates of X = 2,441,926.22 and Y = 278,779.83; thence North 4,120.18 feet to a point having Coordinates of X = 2,441,926.22 and Y = 282,900.00; thence East 9,240.00 feet to the Point of Beginning, containing **1,619.23 acres**, all as more particularly outlined on a plat on file in the Office of Mineral Resources, Department of Natural Resources. All bearings, distances and coordinates are based on Louisiana Coordinate System of 1927, (North or South Zone), where applicable.

NOTE: The above description of the Tract nominated for lease has been provided and corrected, where required, exclusively by the nomination party. Any mineral lease selected from this Tract and awarded by the Louisiana State Mineral and Energy Board shall be without warranty of any kind, either express, implied, or statutory, including, but not limited to, the implied warranties of merchantability and fitness for a particular purpose. Should the mineral lease awarded by the Louisiana State Mineral and Energy Board be subsequently modified, cancelled or abrogated due to the existence of conflicting leases, operating agreements, private claims or other future obligations or conditions which may affect all or any portion of the leased Tract, it shall not relieve the Lessee of the obligation to pay any bonus due thereon to the Louisiana State Mineral and Energy Board, nor shall the Louisiana State Mineral and Energy Board be obligated to refund any consideration paid by the Lessor prior to such modification, cancellation, or abrogation, including, but not limited to, bonuses, rentals and royalties.

NOTE: The State of Louisiana does hereby reserve, and this lease shall be subject to, the imprescriptible right of surface use in the nature of a servitude in favor of the Department of Natural Resources, including its Offices and Commissions, for the sole purpose of implementing, constructing, servicing and maintaining approved coastal zone management and/or restoration projects. Utilization of any and all rights derived under this lease by the mineral lessee, its agents, successors or assigns, shall not interfere with nor hinder the reasonable surface use by the Department of Natural Resources, its Offices or Commissions, as herein above reserved.

Applicant: CAILLIER ENERGY GROUP

Bidder	Cash Payment	Price/Acre	Rental	Oil	Gas	Other



Legend

14020011

Active_Leases

PLAQUEMINES

P.O.B.

BARATARIA BAY

SL 3035

TRACT 43767 - Plaquemines Parish, Louisiana

All of the lands now or formerly constituting the beds and bottoms of all water bodies of every nature and description as to which title is vested in the State of Louisiana, together with all islands arising therein and other lands formed by accretion or by reliction, where allowed by law, excepting tax adjudicated lands, and not presently under mineral lease on February 12, 2014, situated in Plaquemines Parish, Louisiana, and more particularly described as follows: Beginning at a point having Coordinates of X = 2,471,967.91 and Y = 279,200.00; thence South 4,302.47 feet to a point on the Northern boundary of State Lease No. 20985 having Coordinates of X = 2,471,967.91 and Y = 274,897.53; thence South 40 degrees 43 minutes 34 seconds West 762.69 feet along the Northern boundary of said State Lease No. 20985 to a point on the North boundary of State Lease No. 20984 having Coordinates of X = 2,471,470.30 and Y = 274,319.54; thence South 89 degrees 15 minutes 14 seconds West 2,575.52 feet along the Northern boundary of said State Lease No. 20984 to a point on the East line of State Lease No. 21083 having Coordinates of X = 2,468,895.00 and Y = 274,286.00; thence along the boundary of said State Lease No. 21083 the following courses: North 1,714.00 feet to a point having Coordinates of X = 2,468,895.00 and Y = 276,000.00; West 4,449.01 feet to a point having Coordinates of X = 2,464,445.99 and Y = 276,000.00, and South 1,931.93 feet to the Northeast corner of State Lease No. 21082 having Coordinates of X = 2,464,446.00 and Y = 274,068.07; thence along the boundary of said State Lease No. 21082 the following courses: North 73 degrees 10 minutes 41 seconds West 1,157.75 feet to a point having Coordinates of X = 2,463,337.79 and Y = 274,403.12; South 25 degrees 39 minutes 13 seconds West 1,027.39 feet to a point having Coordinates of X = 2,462,893.00 and Y = 273,477.00, and West 2,486.78 feet to a point having Coordinates of X = 2,460,406.22 and Y = 273,477.00; thence North 5,723.00 feet to a point having Coordinates of X = 2,460,406.22 and Y = 279,200.00; thence East 11,561.69 feet to the Point of Beginning, containing **1,175.54 acres**, all as more particularly outlined on a plat on file in the Office of Mineral Resources, Department of Natural Resources. All bearings, distances and coordinates are based on Louisiana Coordinate System of 1927, (North or South Zone), where applicable.

NOTE: The above description of the Tract nominated for lease has been provided and corrected, where required, exclusively by the nomination party. Any mineral lease selected from this Tract and awarded by the Louisiana State Mineral and Energy Board shall be without warranty of any kind, either express, implied, or statutory, including, but not limited to, the implied warranties of merchantability and fitness for a particular purpose. Should the mineral lease awarded by the Louisiana State Mineral and Energy Board be subsequently modified, cancelled or abrogated due to the existence of conflicting leases, operating agreements, private claims or other future obligations or conditions which may affect all or any portion of the leased Tract, it shall not relieve the Lessee of the obligation to pay any bonus due thereon to the Louisiana State Mineral and Energy Board, nor shall the Louisiana State Mineral and Energy Board be

obligated to refund any consideration paid by the Lessor prior to such modification, cancellation, or abrogation, including, but not limited to, bonuses, rentals and royalties.

NOTE: The State of Louisiana does hereby reserve, and this lease shall be subject to, the imprescriptible right of surface use in the nature of a servitude in favor of the Department of Natural Resources, including its Offices and Commissions, for the sole purpose of implementing, constructing, servicing and maintaining approved coastal zone management and/or restoration projects. Utilization of any and all rights derived under this lease by the mineral lessee, its agents, successors or assigns, shall not interfere with nor hinder the reasonable surface use by the Department of Natural Resources, its Offices or Commissions, as herein above reserved.

Applicant: CAILLIER ENERGY GROUP

Bidder	Cash Payment	Price/Acre	Rental	Oil	Gas	Other



0 2,000 Feet

Legend

14020013

Active_Leases

PLAQUEMINES

BARATARIA BAY

P.O.B.

SL 20985

SL 20984

SL 21083

SL 21082

TRACT 43768 - Jefferson and Plaquemines Parishes, Louisiana

All of the lands now or formerly constituting the beds and bottoms of all water bodies of every nature and description as to which title is vested in the State of Louisiana, together with all islands arising therein and other lands formed by accretion or by reliction, where allowed by law, excepting tax adjudicated lands, and not presently under mineral lease on February 12, 2014, situated in Jefferson and Plaquemines Parishes, Louisiana, and more particularly described as follows: Beginning at a point having Coordinates of X = 2,442,315.00 and Y = 264,237.00; thence West 9,695.00 feet to a point having Coordinates of X = 2,432,620.00 and Y = 264,237.00; thence North 4,333.00 feet to a point on the South line of State Lease No. 15744 having Coordinates of X = 2,432,620.00 and Y = 268,570.00; thence along the boundary of said State Lease No. 15744 the following courses: East 2,512.02 feet to a point having Coordinates of X = 2,435,132.02 and Y = 268,570.00 and North 3,234.63 feet to the Southeast corner of State Lease No. 15631 having Coordinates of X = 2,435,132.02 and Y = 271,804.63; thence North 3,034.77 feet along the East line of said State Lease No. 15631 to the Southwest corner of State Lease No. 14534 having Coordinates of X = 2,435,132.02 and Y = 274,839.40; thence East 3,027.18 feet along the South line of said State Lease No. 14534 to a point on the West line of State Lease No. 14374 having Coordinates of X = 2,438,159.20 and Y = 274,839.40; thence along the boundary of said State Lease No. 14374 the following courses: South 00 degrees 38 minutes 43 seconds East 926.14 feet to a point having Coordinates of X = 2,438,169.63 and Y = 273,913.32; South 87 degrees 51 minutes 11 seconds East 1,007.65 feet to a point having Coordinates of X = 2,439,176.57 and Y = 273,875.57, and North 00 degrees 41 minutes 45 seconds West 168.83 to the Southwest corner of State Lease No. 3035, as amended, having Coordinates of X = 2,439,174.52 and Y = 274,044.39; thence along the boundary of said State Lease No. 3035, as amended, the following courses: East 3,140.48 feet to a point having Coordinates of X = 2,442,315.00 and Y = 274,044.39 and South 620.74 feet to a point having Coordinates of X = 2,442,315.00 and Y = 273,423.65; thence South 9,186.65 feet to point of beginning, containing **1,918.97 acres**, all as more particularly outlined on a plat on file in the Office of Mineral Resources, Department of Natural Resources. All bearings, distances and coordinates are based on Louisiana Coordinate System of 1927, (North or South Zone), where applicable.

NOTE: The above description of the Tract nominated for lease has been provided and corrected, where required, exclusively by the nomination party. Any mineral lease selected from this Tract and awarded by the Louisiana State Mineral and Energy Board shall be without warranty of any kind, either express, implied, or statutory, including, but not limited to, the implied warranties of merchantability and fitness for a particular purpose. Should the mineral lease awarded by the Louisiana State Mineral and Energy Board be subsequently modified, cancelled or abrogated due to the existence of conflicting leases, operating agreements, private claims or other future obligations or conditions which may affect all or any portion of the leased Tract, it shall not relieve the Lessee of the

obligation to pay any bonus due thereon to the Louisiana State Mineral and Energy Board, nor shall the Louisiana State Mineral and Energy Board be obligated to refund any consideration paid by the Lessor prior to such modification, cancellation, or abrogation, including, but not limited to, bonuses, rentals and royalties.

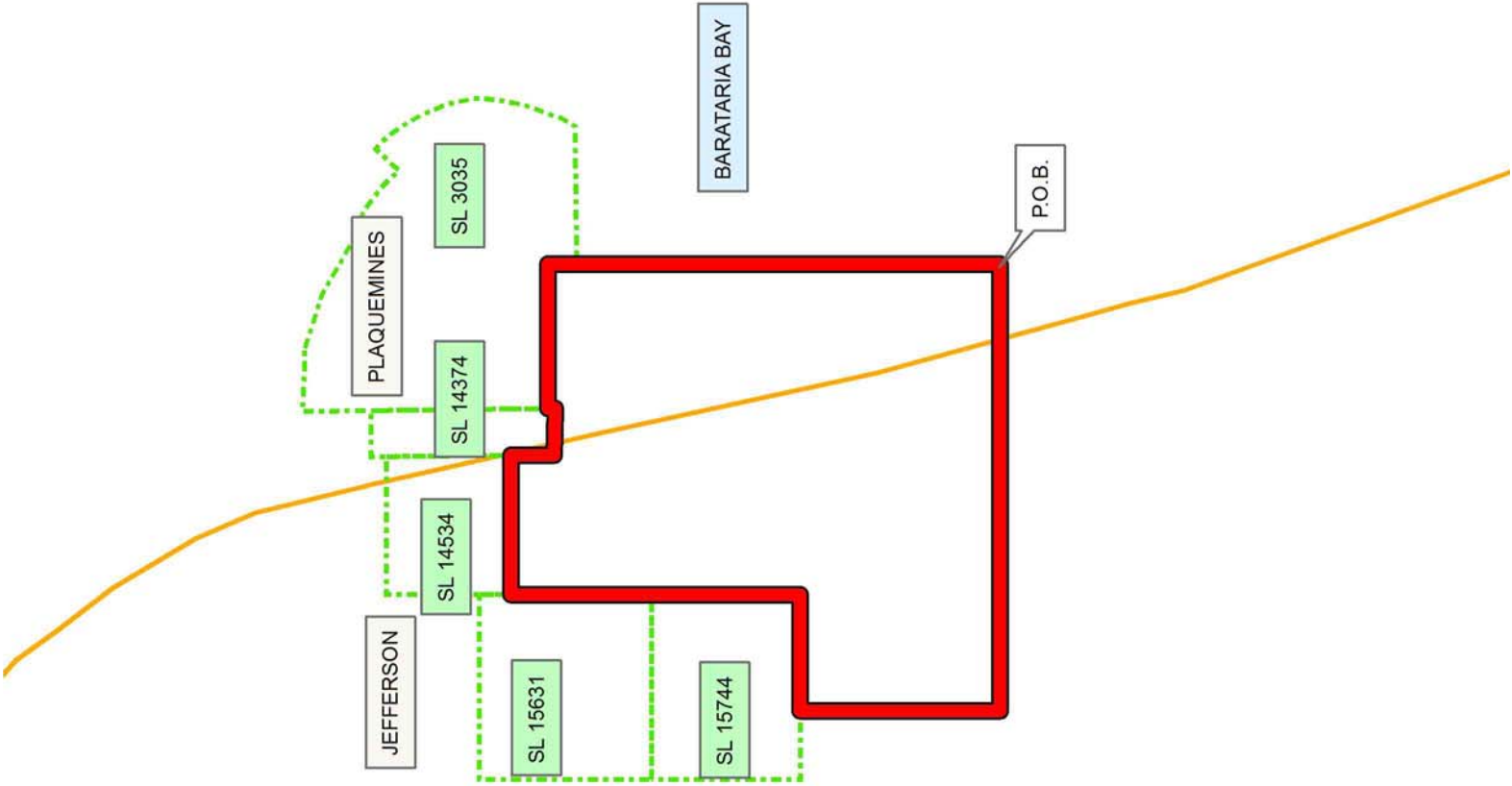
NOTE: The State of Louisiana does hereby reserve, and this lease shall be subject to, the imprescriptible right of surface use in the nature of a servitude in favor of the Department of Natural Resources, including its Offices and Commissions, for the sole purpose of implementing, constructing, servicing and maintaining approved coastal zone management and/or restoration projects. Utilization of any and all rights derived under this lease by the mineral lessee, its agents, successors or assigns, shall not interfere with nor hinder the reasonable surface use by the Department of Natural Resources, its Offices or Commissions, as herein above reserved.

Applicant: CAILLIER ENERGY GROUP

Bidder	Cash Payment	Price/Acre	Rental	Oil	Gas	Other

Legend

- 14020014
- Active_Leases
- Counties



TRACT 43769 - Jefferson and Plaquemines Parishes, Louisiana

All of the lands now or formerly constituting the beds and bottoms of all water bodies of every nature and description as to which title is vested in the State of Louisiana, together with all islands arising therein and other lands formed by accretion or by reliction, where allowed by law, excepting tax adjudicated lands, and not presently under mineral lease on February 12, 2014, situated in Jefferson and Plaquemines Parishes, Louisiana, and more particularly described as follows: Beginning at a point having Coordinates of X = 2,442,315.00 and Y = 264,237.00; thence North 9,186.65 feet to a point on the Southern boundary of State Lease No. 3035, as amended, having Coordinates of X = 2,442,315.00 and Y = 273,423.65; thence along the boundary of said State Lease No. 3035, as amended, the following courses: North 89 degrees 18 minutes 07 seconds East 2,987.32 feet to a point having Coordinates of X = 2,445,302.10 and Y = 273,460.04 and North 30 degrees 27 minutes 46 seconds East 19.68 feet to a point having Coordinates of X = 2,445,312.08 and Y = 273,477.00; thence East 5,376.73 feet to a point having Coordinates of X = 2,450,688.81 and Y = 273,477.00; thence South 1,214.10 feet to the Northeast corner of State Lease No. 21080 having Coordinates of X = 2,450,688.81 and Y = 272,262.90; thence along the boundary of said State Lease No. 21080 the following courses: South 81 degrees 50 minutes 35 seconds West 1,965.69 feet to a point having Coordinates of X = 2,448,743.00 and Y = 271,984.00; South 00 degrees 32 minutes 28 seconds East 847.04 feet to a point having Coordinates of X = 2,448,751.00 and Y = 271,137.00, and North 89 degrees 40 minutes 43 seconds East 1,937.84 feet to its Southeast corner having Coordinates of X = 2,450,688.81 and Y = 271,147.87; thence South 6,910.87 feet to a point having Coordinates of X = 2,450,688.81 and Y = 264,237.00; thence West 8,373.81 feet to the point of beginning, containing **1,730.10 acres**, all as more particularly outlined on a plat on file in the Office of Mineral Resources, Department of Natural Resources. All bearings, distances and coordinates are based on Louisiana Coordinate System of 1927, (North or South Zone), where applicable.

NOTE: The above description of the Tract nominated for lease has been provided and corrected, where required, exclusively by the nomination party. Any mineral lease selected from this Tract and awarded by the Louisiana State Mineral and Energy Board shall be without warranty of any kind, either express, implied, or statutory, including, but not limited to, the implied warranties of merchantability and fitness for a particular purpose. Should the mineral lease awarded by the Louisiana State Mineral and Energy Board be subsequently modified, cancelled or abrogated due to the existence of conflicting leases, operating agreements, private claims or other future obligations or conditions which may affect all or any portion of the leased Tract, it shall not relieve the Lessee of the obligation to pay any bonus due thereon to the Louisiana State Mineral and Energy Board, nor shall the Louisiana State Mineral and Energy Board be obligated to refund any consideration paid by the Lessor prior to such modification, cancellation, or abrogation, including, but not limited to, bonuses, rentals and royalties.

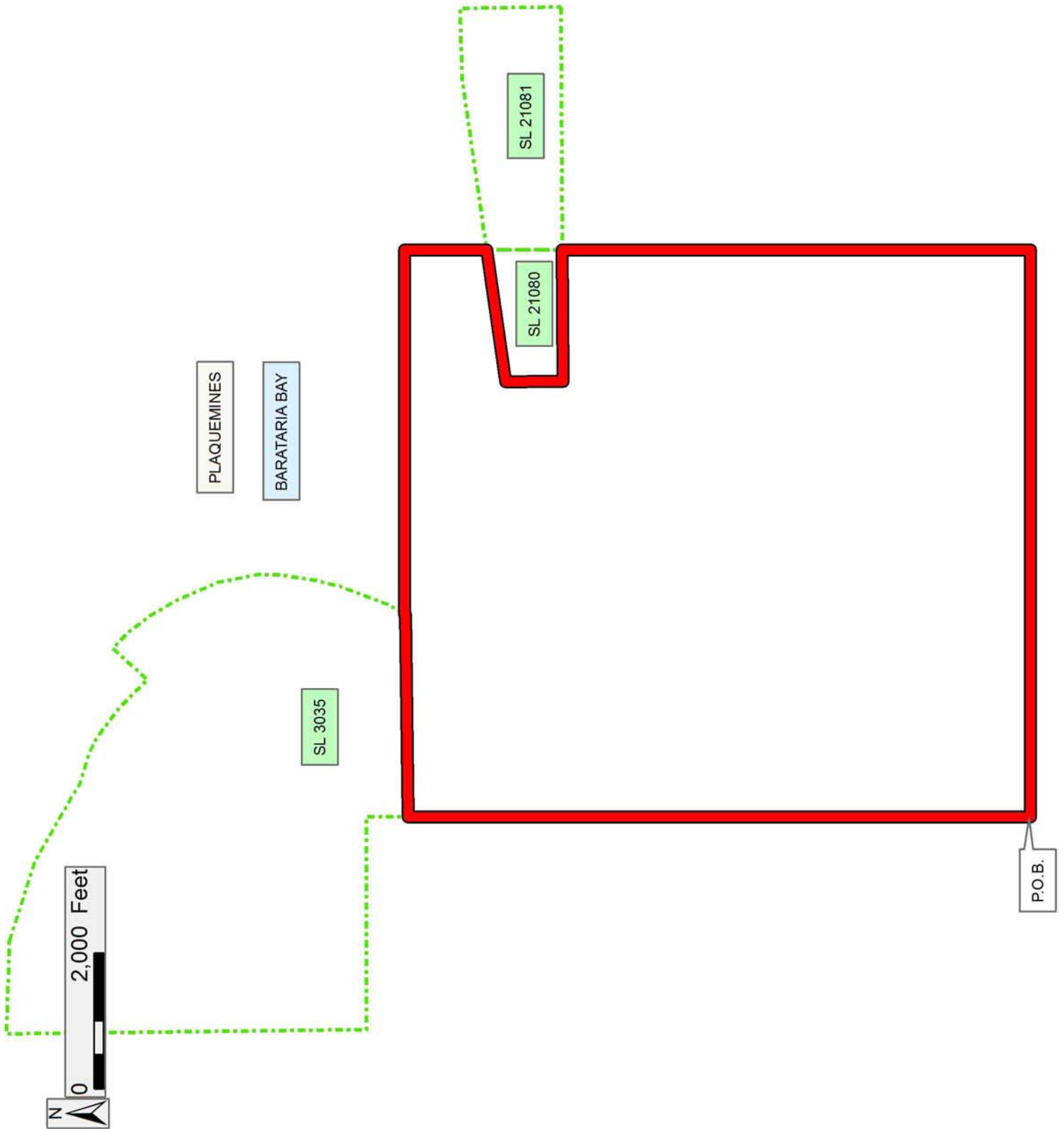
NOTE: The State of Louisiana does hereby reserve, and this lease shall be subject to, the imprescriptible right of surface use in the nature of a servitude in favor of the Department of Natural Resources, including its Offices and Commissions, for the sole purpose of implementing, constructing, servicing and maintaining approved coastal zone management and/or restoration projects. Utilization of any and all rights derived under this lease by the mineral lessee, its agents, successors or assigns, shall not interfere with nor hinder the reasonable surface use by the Department of Natural Resources, its Offices or Commissions, as herein above reserved.

Applicant: CAILLIER ENERGY GROUP

Bidder	Cash Payment	Price/Acre	Rental	Oil	Gas	Other

Legend

14020018
Active_Leases



TRACT 43770 - Plaquemines Parish, Louisiana

All of the lands now or formerly constituting the beds and bottoms of all water bodies of every nature and description as to which title is vested in the State of Louisiana, together with all islands arising therein and other lands formed by accretion or by reliction, where allowed by law, excepting tax adjudicated lands, and not presently under mineral lease on February 12, 2014, situated in Plaquemines Parish, Louisiana, and more particularly described as follows: Beginning at a point having Coordinates of X = 2,461,649.04 and Y = 262,984.38; thence West 10,960.24 feet to a point having Coordinates of X = 2,450,688.81 and Y = 262,984.38; thence North 8,163.49 feet to the Southwest corner of State Lease No. 21081 having Coordinates of X = 2,450,688.81 and Y = 271,147.87; thence along the boundary of said State Lease No. 21081 the following courses: North 89 degrees 40 minutes 43 seconds East 3,588.25 feet to a point having Coordinates of X = 2,454,277.00 and Y = 271,168.00; North 00 degree 46 minutes 09 seconds West 1,490.13 feet to a point having Coordinates of X = 2,454,257.00 and Y = 272,658.00; South 88 degrees 19 minutes 01 seconds West 1,021.44 feet to a point having Coordinates of X = 2,453,236.00 and Y = 272,628.00, and South 81 degrees 50 minutes 35 seconds West 2,573.23 feet to its Northwest corner having Coordinates of X = 2,450,688.81 and Y = 272,262.90; thence North 1,214.10 feet to a point having Coordinates of X = 2,450,688.81 and Y = 273,477.00; thence East 9,295.19 feet to the Northwest corner of State Lease No. 21082 having Coordinates of X = 2,459,984.00 and Y = 273,477.00; thence along the boundary of said State Lease No. 21082 the following courses: South 2,290.00 feet to a point having Coordinates of X = 2,459,984.00 and Y = 271,187.00 and South 80 degrees 29 minutes 46 seconds East 1,688.21 feet to a point having Coordinates of X = 2,461,649.04 and Y = 270,908.25; thence South 7,923.87 feet to the point of beginning, containing **2,436.77 acres**, all as more particularly outlined on a plat on file in the Office of Mineral Resources, Department of Natural Resources. All bearings, distances and coordinates are based on Louisiana Coordinate System of 1927, (North or South Zone), where applicable.

NOTE: The above description of the Tract nominated for lease has been provided and corrected, where required, exclusively by the nomination party. Any mineral lease selected from this Tract and awarded by the Louisiana State Mineral and Energy Board shall be without warranty of any kind, either express, implied, or statutory, including, but not limited to, the implied warranties of merchantability and fitness for a particular purpose. Should the mineral lease awarded by the Louisiana State Mineral and Energy Board be subsequently modified, cancelled or abrogated due to the existence of conflicting leases, operating agreements, private claims or other future obligations or conditions which may affect all or any portion of the leased Tract, it shall not relieve the Lessee of the obligation to pay any bonus due thereon to the Louisiana State Mineral and Energy Board, nor shall the Louisiana State Mineral and Energy Board be obligated to refund any consideration paid by the Lessor prior to such

modification, cancellation, or abrogation, including, but not limited to, bonuses, rentals and royalties.

NOTE: The State of Louisiana does hereby reserve, and this lease shall be subject to, the imprescriptible right of surface use in the nature of a servitude in favor of the Department of Natural Resources, including its Offices and Commissions, for the sole purpose of implementing, constructing, servicing and maintaining approved coastal zone management and/or restoration projects. Utilization of any and all rights derived under this lease by the mineral lessee, its agents, successors or assigns, shall not interfere with nor hinder the reasonable surface use by the Department of Natural Resources, its Offices or Commissions, as herein above reserved.

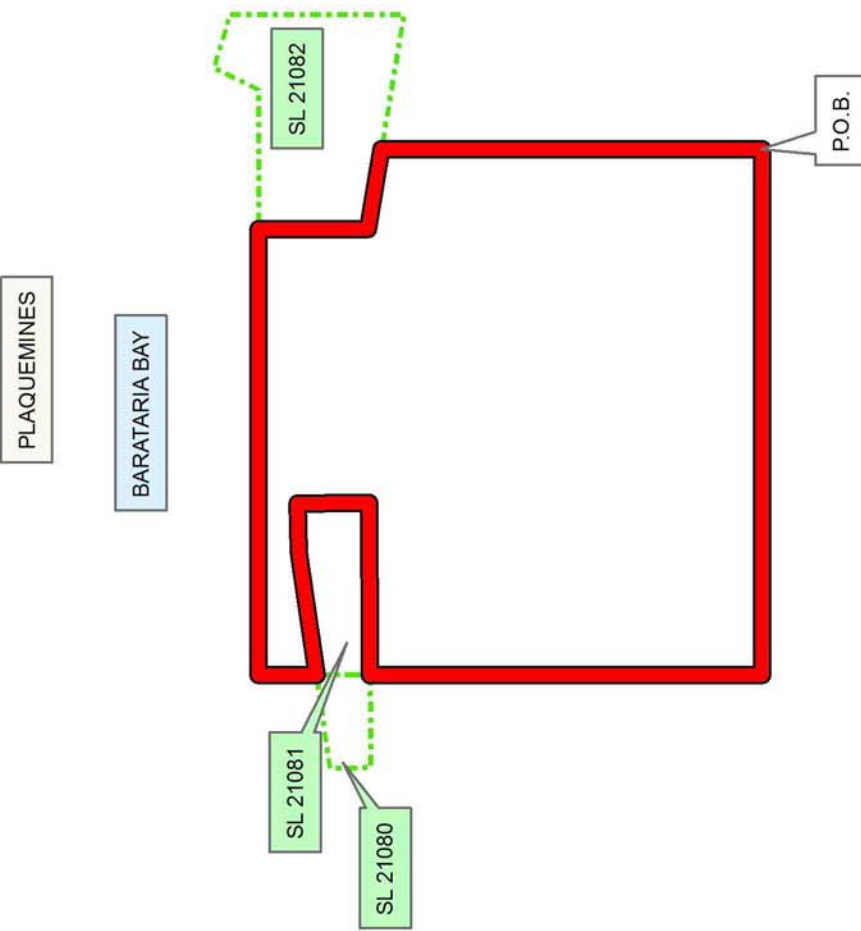
Applicant: CAILLIER ENERGY GROUP

Bidder	Cash Payment	Price/Acre	Rental	Oil	Gas	Other



Legend

14020015
Active_Leases



TRACT 43771 - Plaquemines Parish, Louisiana

All of the lands now or formerly constituting the beds and bottoms of all water bodies of every nature and description as to which title is vested in the State of Louisiana, together with all islands arising therein and other lands formed by accretion or by reliction, where allowed by law, excepting tax adjudicated lands, and not presently under mineral lease on February 12, 2014, situated in Plaquemines Parish, Louisiana, and more particularly described as follows: Beginning at a point having Coordinates of X = 2,461,649.04 and Y = 262,984.38; thence North 7,923.87 feet to a point on the Southern boundary of State Lease No. 21082 having Coordinates of X = 2,461,649.04 and Y = 270,908.25; thence South 80 degrees 29 minutes 46 seconds East 2,835.88 feet along the Southern boundary of said State Lease No. 21082 to the Southwest corner of State Lease No. 21084 having Coordinates of X = 2,464,446.00 and Y = 270,440.00; thence Southeasterly approximately 8,562 feet to a point on the Western boundary of State Lease No. 2028; thence along the boundary of said State Lease No. 2028 the following courses: Southerly and Easterly to a point on the Western boundary of State Lease No. 2104; thence along the boundary of said State Lease No. 2104 the following courses: Southerly, Westerly, and Southerly to a point of intersection with an East-West line having a Coordinate of Y = 262,984.38; thence West approximately 13,233 feet to the point of beginning, **LESS AND EXCEPT** that portion, if any, of State Lease No. 2028 and State Lease No. 2104 which may lie within the above described tract, containing approximately **2,183 acres**, all as more particularly outlined on a plat on file in the Office of Mineral Resources, Department of Natural Resources. All bearings, distances and coordinates are based on Louisiana Coordinate System of 1927, (North or South Zone), where applicable.

NOTE: The above description of the Tract nominated for lease has been provided and corrected, where required, exclusively by the nomination party. Any mineral lease selected from this Tract and awarded by the Louisiana State Mineral and Energy Board shall be without warranty of any kind, either express, implied, or statutory, including, but not limited to, the implied warranties of merchantability and fitness for a particular purpose. Should the mineral lease awarded by the Louisiana State Mineral and Energy Board be subsequently modified, cancelled or abrogated due to the existence of conflicting leases, operating agreements, private claims or other future obligations or conditions which may affect all or any portion of the leased Tract, it shall not relieve the Lessee of the obligation to pay any bonus due thereon to the Louisiana State Mineral and Energy Board, nor shall the Louisiana State Mineral and Energy Board be obligated to refund any consideration paid by the Lessor prior to such modification, cancellation, or abrogation, including, but not limited to, bonuses, rentals and royalties.

NOTE: The State of Louisiana does hereby reserve, and this lease shall be subject to, the imprescriptible right of surface use in the nature of a servitude in favor of the Department of Natural Resources, including its Offices and Commissions, for the sole purpose of implementing,

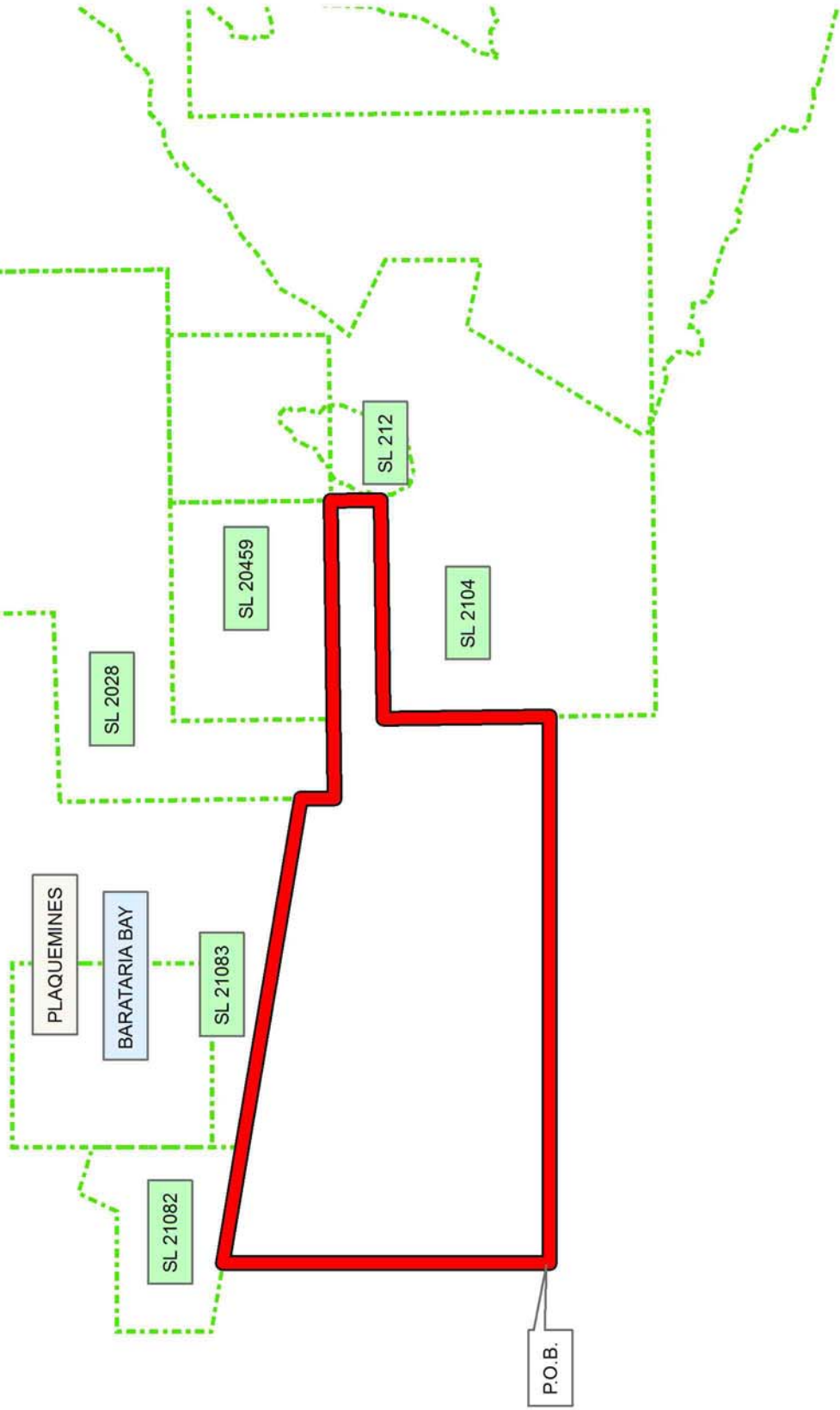
constructing, servicing and maintaining approved coastal zone management and/or restoration projects. Utilization of any and all rights derived under this lease by the mineral lessee, its agents, successors or assigns, shall not interfere with nor hinder the reasonable surface use by the Department of Natural Resources, its Offices or Commissions, as herein above reserved.

Applicant: CAILLIER ENERGY GROUP

Bidder	Cash Payment	Price/Acre	Rental	Oil	Gas	Other



Legend
14020016
Active_Leases



TRACT 43772 - Jefferson and Plaquemines Parishes, Louisiana

All of the lands now or formerly constituting the beds and bottoms of all water bodies of every nature and description as to which title is vested in the State of Louisiana, together with all islands arising therein and other lands formed by accretion or by reliction, where allowed by law, excepting tax adjudicated lands, and not presently under mineral lease on February 12, 2014, situated in Jefferson and Plaquemines Parishes, Louisiana, and more particularly described as follows: Beginning at a point having Coordinates of X = 2,442,315.00 and Y = 264,237.00; thence South 8,867.22 feet to a point on the North line of State Lease No. 356, as amended, having Coordinates of X = 2,442,315.00 and Y = 255,369.78; thence South 89 degrees 21 minutes 40 seconds West 9,695.60 feet along the North line of said State Lease No. 356, as amended, to a point having Coordinates of X = 2,432,620.00 and Y = 255,261.67; thence North 8,975.33 feet to a point having Coordinates of X = 2,432,620.00 and Y = 264,237.00; thence East 9,695.00 feet to the point of beginning, containing **1,985.58 acres**, all as more particularly outlined on a plat on file in the Office of Mineral Resources, Department of Natural Resources. All bearings, distances and coordinates are based on Louisiana Coordinate System of 1927, (North or South Zone), where applicable.

NOTE: The above description of the Tract nominated for lease has been provided and corrected, where required, exclusively by the nomination party. Any mineral lease selected from this Tract and awarded by the Louisiana State Mineral and Energy Board shall be without warranty of any kind, either express, implied, or statutory, including, but not limited to, the implied warranties of merchantability and fitness for a particular purpose. Should the mineral lease awarded by the Louisiana State Mineral and Energy Board be subsequently modified, cancelled or abrogated due to the existence of conflicting leases, operating agreements, private claims or other future obligations or conditions which may affect all or any portion of the leased Tract, it shall not relieve the Lessee of the obligation to pay any bonus due thereon to the Louisiana State Mineral and Energy Board, nor shall the Louisiana State Mineral and Energy Board be obligated to refund any consideration paid by the Lessor prior to such modification, cancellation, or abrogation, including, but not limited to, bonuses, rentals and royalties.

NOTE: The State of Louisiana does hereby reserve, and this lease shall be subject to, the imprescriptible right of surface use in the nature of a servitude in favor of the Department of Natural Resources, including its Offices and Commissions, for the sole purpose of implementing, constructing, servicing and maintaining approved coastal zone management and/or restoration projects. Utilization of any and all rights derived under this lease by the mineral lessee, its agents, successors or assigns, shall not interfere with nor hinder the reasonable surface use by the Department of Natural Resources, its Offices or Commissions, as herein above reserved.

Applicant: CAILLIER ENERGY GROUP

Bidder	Cash Payment	Price/Acre	Rental	Oil	Gas	Other

Legend

- 14020017
- Active_Leases
- Counties

