

TRACT 43773 - Jefferson and Plaquemines Parishes, Louisiana

All of the lands now or formerly constituting the beds and bottoms of all water bodies of every nature and description as to which title is vested in the State of Louisiana, together with all islands arising therein and other lands formed by accretion or by reliction, where allowed by law, excepting tax adjudicated lands, and not presently under mineral lease on February 12, 2014, situated in Jefferson and Plaquemines Parishes, Louisiana, and more particularly described as follows: Beginning at a point having Coordinates of X = 2,442,315.00 and Y = 264,237.00; thence East 8,373.81 feet to a point having Coordinates of X = 2,450,688.81 and Y = 264,237.00; thence South 9,240.00 feet to a point having Coordinates of X = 2,450,688.81 and Y = 254,997.00; thence West 5,865.20 feet to a point on the Eastern boundary of State Lease No. 356, as amended, having Coordinates of X = 2,444,823.61 and Y = 254,997.00; thence along the boundary of said State Lease No. 356, as amended, the following courses: North 00 degrees 38 minutes 20 seconds West 400.72 feet to a point having Coordinates of X = 2,444,819.14 and Y = 255,397.70, and South 89 degrees 21 minutes 40 seconds West 2,504.30 feet to a point having Coordinates of X = 2,442,315.00 and Y = 255,369.78; thence North 8,867.22 feet to the point of beginning, containing **1,754.01 acres**, all as more particularly outlined on a plat on file in the Office of Mineral Resources, Department of Natural Resources. All bearings, distances and coordinates are based on Louisiana Coordinate System of 1927, (North or South Zone), where applicable.

NOTE: The above description of the Tract nominated for lease has been provided and corrected, where required, exclusively by the nomination party. Any mineral lease selected from this Tract and awarded by the Louisiana State Mineral and Energy Board shall be without warranty of any kind, either express, implied, or statutory, including, but not limited to, the implied warranties of merchantability and fitness for a particular purpose. Should the mineral lease awarded by the Louisiana State Mineral and Energy Board be subsequently modified, cancelled or abrogated due to the existence of conflicting leases, operating agreements, private claims or other future obligations or conditions which may affect all or any portion of the leased Tract, it shall not relieve the Lessee of the obligation to pay any bonus due thereon to the Louisiana State Mineral and Energy Board, nor shall the Louisiana State Mineral and Energy Board be obligated to refund any consideration paid by the Lessor prior to such modification, cancellation, or abrogation, including, but not limited to, bonuses, rentals and royalties.

NOTE: The State of Louisiana does hereby reserve, and this lease shall be subject to, the imprescriptible right of surface use in the nature of a servitude in favor of the Department of Natural Resources, including its Offices and Commissions, for the sole purpose of implementing, constructing, servicing and maintaining approved coastal zone management and/or restoration projects. Utilization of any and all rights derived under this lease by the mineral lessee, its agents, successors or assigns, shall not interfere with nor hinder the reasonable surface use by the

Department of Natural Resources, its Offices or Commissions, as herein above reserved.

Applicant: CAILLIER ENERGY GROUP

Bidder	Cash Payment	Price/Acre	Rental	Oil	Gas	Other

Legend



14020026

Active_Leases

Counties



2,000 Feet

0

PLAQUEMINES

BARATARIA BAY

P.O.B.

JEFFERSON

SL 356

TRACT 43774 - Plaquemines Parish, Louisiana

All of the lands now or formerly constituting the beds and bottoms of all water bodies of every nature and description as to which title is vested in the State of Louisiana, together with all islands arising therein and other lands formed by accretion or by reliction, where allowed by law, excepting tax adjudicated lands, and not presently under mineral lease on February 12, 2014, situated in Plaquemines Parish, Louisiana, and more particularly described as follows: Beginning at a point having Coordinates of X = 2,461,649.04 and Y = 262,984.38; thence South 7,987.38 feet to a point having Coordinates of X = 2,461,649.04 and Y = 254,997.00; thence West 10,960.24 feet to a point having Coordinates of X = 2,450,688.81 and Y = 254,997.00; thence North 7,987.38 feet to a point having Coordinates of X = 2,450,688.81 and Y = 262,984.38; thence East 10,960.24 feet to the point of beginning, containing approximately **1,991 acres**, all as more particularly outlined on a plat on file in the Office of Mineral Resources, Department of Natural Resources. All bearings, distances and coordinates are based on Louisiana Coordinate System of 1927, (North or South Zone), where applicable.

NOTE: The above description of the Tract nominated for lease has been provided and corrected, where required, exclusively by the nomination party. Any mineral lease selected from this Tract and awarded by the Louisiana State Mineral and Energy Board shall be without warranty of any kind, either express, implied, or statutory, including, but not limited to, the implied warranties of merchantability and fitness for a particular purpose. Should the mineral lease awarded by the Louisiana State Mineral and Energy Board be subsequently modified, cancelled or abrogated due to the existence of conflicting leases, operating agreements, private claims or other future obligations or conditions which may affect all or any portion of the leased Tract, it shall not relieve the Lessee of the obligation to pay any bonus due thereon to the Louisiana State Mineral and Energy Board, nor shall the Louisiana State Mineral and Energy Board be obligated to refund any consideration paid by the Lessor prior to such modification, cancellation, or abrogation, including, but not limited to, bonuses, rentals and royalties.

NOTE: The State of Louisiana does hereby reserve, and this lease shall be subject to, the imprescriptible right of surface use in the nature of a servitude in favor of the Department of Natural Resources, including its Offices and Commissions, for the sole purpose of implementing, constructing, servicing and maintaining approved coastal zone management and/or restoration projects. Utilization of any and all rights derived under this lease by the mineral lessee, its agents, successors or assigns, shall not interfere with nor hinder the reasonable surface use by the Department of Natural Resources, its Offices or Commissions, as herein above reserved.

Applicant: CAILLIER ENERGY GROUP

Bidder	Cash Payment	Price/Acre	Rental	Oil	Gas	Other

Legend



14020025

P.O.B.

PLAQUEMINES

0 2,000 Feet



BARATARIA BAY

TRACT 43775 - Plaquemines Parish, Louisiana

All of the lands now or formerly constituting the beds and bottoms of all water bodies of every nature and description as to which title is vested in the State of Louisiana, together with all islands arising therein and other lands formed by accretion or by reliction, where allowed by law, excepting tax adjudicated lands, and not presently under mineral lease on February 12, 2014, situated in Plaquemines Parish, Louisiana, and more particularly described as follows: Beginning at a point having Coordinates of X = 2,461,649.04 and Y = 262,984.38; thence Easterly approximately 13,233 feet to a point on the Western boundary of State Lease No. 2104; thence Southerly approximately 2,565 feet to a point on the Northern boundary line of State Lease No. 21085; thence Westerly approximately 76 feet along the Northern boundary line of said State Lease No. 21085 to its Northwest corner having Coordinates of X = 2,474,841.13 and Y = 260,416.69; thence South 5,419.69 feet along the Western boundary of said State Lease No. 21085 to a point having Coordinates of X = 2,474,841.13 and Y = 254,997.00; thence West 13,192.09 feet to a point having Coordinates of X = 2,461,649.04 and Y = 254,997.00; thence North 7,987.38 feet to the point of beginning, **LESS AND EXCEPT** that portion, if any, of State Lease No. 2104 which may lie within the above described tract, containing approximately **2,395 acres**, all as more particularly outlined on a plat on file in the Office of Mineral Resources, Department of Natural Resources. All bearings, distances and coordinates are based on Louisiana Coordinate System of 1927, (North or South Zone), where applicable.

NOTE: The above description of the Tract nominated for lease has been provided and corrected, where required, exclusively by the nomination party. Any mineral lease selected from this Tract and awarded by the Louisiana State Mineral and Energy Board shall be without warranty of any kind, either express, implied, or statutory, including, but not limited to, the implied warranties of merchantability and fitness for a particular purpose. Should the mineral lease awarded by the Louisiana State Mineral and Energy Board be subsequently modified, cancelled or abrogated due to the existence of conflicting leases, operating agreements, private claims or other future obligations or conditions which may affect all or any portion of the leased Tract, it shall not relieve the Lessee of the obligation to pay any bonus due thereon to the Louisiana State Mineral and Energy Board, nor shall the Louisiana State Mineral and Energy Board be obligated to refund any consideration paid by the Lessor prior to such modification, cancellation, or abrogation, including, but not limited to, bonuses, rentals and royalties.

NOTE: The State of Louisiana does hereby reserve, and this lease shall be subject to, the imprescriptible right of surface use in the nature of a servitude in favor of the Department of Natural Resources, including its Offices and Commissions, for the sole purpose of implementing, constructing, servicing and maintaining approved coastal zone management and/or restoration projects. Utilization of any and all rights derived under this lease by the mineral lessee, its agents, successors or assigns,

shall not interfere with nor hinder the reasonable surface use by the Department of Natural Resources, its Offices or Commissions, as herein above reserved.

Applicant: CAILLIER ENERGY GROUP

Bidder	Cash Payment	Price/Acre	Rental	Oil	Gas	Other

Legend

14020024



Active_Leases

SL 2104

SL 21085

PLAQUEMINES

BARATARIA BAY

P.O.B.



0 2,000 Feet

TRACT 43776 - Plaquemines Parish, Louisiana

All of the lands now or formerly constituting the beds and bottoms of all water bodies of every nature and description as to which title is vested in the State of Louisiana, together with all islands arising therein and other lands formed by accretion or by reliction, where allowed by law, excepting tax adjudicated lands, and not presently under mineral lease on February 12, 2014, situated in Plaquemines Parish, Louisiana, and more particularly described as follows: Beginning at a point having Coordinates of X = 2,453,289.72 and Y = 254,997.00; thence East 8,359.32 feet to a point having Coordinates of X = 2,461,649.04 and Y = 254,997.00; thence South 9,576.67 feet to a point having Coordinates of X = 2,461,649.04 and Y = 245,420.33; thence West 8,359.32 feet to a point having Coordinates of X = 2,453,289.72 and Y = 245,420.33; thence North 9,576.67 feet to the point of beginning, containing approximately **1,837 acres**, all as more particularly outlined on a plat on file in the Office of Mineral Resources, Department of Natural Resources. All bearings, distances and coordinates are based on Louisiana Coordinate System of 1927, (North or South Zone), where applicable.

NOTE: The above description of the Tract nominated for lease has been provided and corrected, where required, exclusively by the nomination party. Any mineral lease selected from this Tract and awarded by the Louisiana State Mineral and Energy Board shall be without warranty of any kind, either express, implied, or statutory, including, but not limited to, the implied warranties of merchantability and fitness for a particular purpose. Should the mineral lease awarded by the Louisiana State Mineral and Energy Board be subsequently modified, cancelled or abrogated due to the existence of conflicting leases, operating agreements, private claims or other future obligations or conditions which may affect all or any portion of the leased Tract, it shall not relieve the Lessee of the obligation to pay any bonus due thereon to the Louisiana State Mineral and Energy Board, nor shall the Louisiana State Mineral and Energy Board be obligated to refund any consideration paid by the Lessor prior to such modification, cancellation, or abrogation, including, but not limited to, bonuses, rentals and royalties.

NOTE: The State of Louisiana does hereby reserve, and this lease shall be subject to, the imprescriptible right of surface use in the nature of a servitude in favor of the Department of Natural Resources, including its Offices and Commissions, for the sole purpose of implementing, constructing, servicing and maintaining approved coastal zone management and/or restoration projects. Utilization of any and all rights derived under this lease by the mineral lessee, its agents, successors or assigns, shall not interfere with nor hinder the reasonable surface use by the Department of Natural Resources, its Offices or Commissions, as herein above reserved.

Applicant: CAILLIER ENERGY GROUP

Bidder	Cash Payment	Price/Acre	Rental	Oil	Gas	Other

Legend



14020022



0 2,000 Feet



PLAQUEMINES

BARATARIA BAY

P.O.B.



TRACT 43777 - Plaquemines Parish, Louisiana

All of the lands now or formerly constituting the beds and bottoms of all water bodies of every nature and description as to which title is vested in the State of Louisiana, together with all islands arising therein and other lands formed by accretion or by reliction, where allowed by law, excepting tax adjudicated lands, and not presently under mineral lease on February 12, 2014, situated in Plaquemines Parish, Louisiana, and more particularly described as follows: Beginning at a point having Coordinates of X = 2,470,332.23 and Y = 254,997.00; thence South 9,576.67 feet to a point having Coordinates of X = 2,470,332.23 and Y = 245,420.33; thence West 8,683.18 feet to a point having Coordinates of X = 2,461,649.04 and Y = 245,420.33; thence North 9,576.67 feet to a point having Coordinates of X = 2,461,649.04 and Y = 254,997.00; thence East 8,683.18 feet to the point of beginning, containing approximately **1,888 acres**, all as more particularly outlined on a plat on file in the Office of Mineral Resources, Department of Natural Resources. All bearings, distances and coordinates are based on Louisiana Coordinate System of 1927, (North or South Zone), where applicable.

NOTE: The above description of the Tract nominated for lease has been provided and corrected, where required, exclusively by the nomination party. Any mineral lease selected from this Tract and awarded by the Louisiana State Mineral and Energy Board shall be without warranty of any kind, either express, implied, or statutory, including, but not limited to, the implied warranties of merchantability and fitness for a particular purpose. Should the mineral lease awarded by the Louisiana State Mineral and Energy Board be subsequently modified, cancelled or abrogated due to the existence of conflicting leases, operating agreements, private claims or other future obligations or conditions which may affect all or any portion of the leased Tract, it shall not relieve the Lessee of the obligation to pay any bonus due thereon to the Louisiana State Mineral and Energy Board, nor shall the Louisiana State Mineral and Energy Board be obligated to refund any consideration paid by the Lessor prior to such modification, cancellation, or abrogation, including, but not limited to, bonuses, rentals and royalties.

NOTE: The State of Louisiana does hereby reserve, and this lease shall be subject to, the imprescriptible right of surface use in the nature of a servitude in favor of the Department of Natural Resources, including its Offices and Commissions, for the sole purpose of implementing, constructing, servicing and maintaining approved coastal zone management and/or restoration projects. Utilization of any and all rights derived under this lease by the mineral lessee, its agents, successors or assigns, shall not interfere with nor hinder the reasonable surface use by the Department of Natural Resources, its Offices or Commissions, as herein above reserved.

Applicant: CAILLIER ENERGY GROUP

Bidder	Cash Payment	Price/Acre	Rental	Oil	Gas	Other

Legend



14020021



0 3,000 Feet

PLAQUEMINES

BARATARIA BAY

P.O.B.



TRACT 43778 - Plaquemines Parish, Louisiana

All of the lands now or formerly constituting the beds and bottoms of all water bodies of every nature and description as to which title is vested in the State of Louisiana, together with all islands arising therein and other lands formed by accretion or by reliction, where allowed by law, excepting tax adjudicated lands, and not presently under mineral lease on February 12, 2014, situated in Plaquemines Parish, Louisiana, and more particularly described as follows: Beginning at a point having Coordinates of X = 2,470,332.23 and Y = 254,997.00; thence East 4,508.90 feet to a point on the Western boundary of State Lease No. 21085 having Coordinates of X = 2,474,841.13 and Y = 254,997.00; thence along the boundary of said State Lease No. 21085 the following courses: South 586.87 feet to a point having Coordinates of X = 2,474,841.13 and Y = 254,410.13 and East 3,968.82 feet to a point on the Western boundary of State Lease No. 20379 having Coordinates of X = 2,478,809.95 and Y = 254,410.14; thence along the boundary of said State Lease No. 20379 the following courses: South 00 degrees 48 minutes 48 seconds East 4,150.39 feet to a point having Coordinates of X = 2,478,868.87 and Y = 250,260.17, and East 48.30 feet to the Northwest corner of State Lease No. 21188 having Coordinates of X = 2,478,917.17 and Y = 250,260.17; thence South 01 degrees 25 minutes 20 seconds East 3,957.67 feet along the West boundary of said State Lease No. 21188 to its Southwest corner having Coordinates of X = 2,479,015.41 and Y = 246,303.72; thence South 883.39 feet to a point having Coordinates of X = 2,479,015.41 and Y = 245,420.33; thence West 8,683.18 feet to a point having Coordinates of X = 2,470,332.23 and Y = 245,420.33; thence North 9,576.67 feet to the point of beginning, containing approximately **1,644 acres**, all as more particularly outlined on a plat on file in the Office of Mineral Resources, Department of Natural Resources. All bearings, distances and coordinates are based on Louisiana Coordinate System of 1927, (North or South Zone), where applicable.

NOTE: The above description of the Tract nominated for lease has been provided and corrected, where required, exclusively by the nomination party. Any mineral lease selected from this Tract and awarded by the Louisiana State Mineral and Energy Board shall be without warranty of any kind, either express, implied, or statutory, including, but not limited to, the implied warranties of merchantability and fitness for a particular purpose. Should the mineral lease awarded by the Louisiana State Mineral and Energy Board be subsequently modified, cancelled or abrogated due to the existence of conflicting leases, operating agreements, private claims or other future obligations or conditions which may affect all or any portion of the leased Tract, it shall not relieve the Lessee of the obligation to pay any bonus due thereon to the Louisiana State Mineral and Energy Board, nor shall the Louisiana State Mineral and Energy Board be obligated to refund any consideration paid by the Lessor prior to such modification, cancellation, or abrogation, including, but not limited to, bonuses, rentals and royalties.

NOTE: The State of Louisiana does hereby reserve, and this lease shall be subject to, the imprescriptible right of surface use in the nature of a servitude in favor of the Department of Natural Resources, including its Offices and Commissions, for the sole purpose of implementing, constructing, servicing and maintaining approved coastal zone management and/or restoration projects. Utilization of any and all rights derived under this lease by the mineral lessee, its agents, successors or assigns, shall not interfere with nor hinder the reasonable surface use by the Department of Natural Resources, its Offices or Commissions, as herein above reserved.

Applicant: CAILLIER ENERGY GROUP

Bidder	Cash Payment	Price/Acre	Rental	Oil	Gas	Other

Legend

14020020



Active_Leases



0 2,000 Feet



PLAQUEMINES

SL 21085

P.O.B.

BARATARIA BAY

SL 20379

SL 21188

TRACT 43779 - Jefferson and Plaquemines Parishes, Louisiana

All of the lands now or formerly constituting the beds and bottoms of all water bodies of every nature and description as to which title is vested in the State of Louisiana, together with all islands arising therein and other lands formed by accretion or by reliction, where allowed by law, excepting tax adjudicated lands, and not presently under mineral lease on February 12, 2014, situated in Jefferson and Plaquemines Parishes, Louisiana, and more particularly described as follows: Beginning at a point having Coordinates of X = 2,453,289.72 and Y = 254,997.00; thence South 9,576.67 feet to a point having Coordinates of X = 2,453,289.72 and Y = 245,420.33; thence West 8,359.32 feet to a point on the Eastern boundary of State Lease No. 356, as amended, having Coordinates of X = 2,444,930.40 and Y = 245,420.33; thence North 00 degrees 38 degrees 20 seconds West 9,577.27 feet along the Eastern boundary of said State Lease No. 356, as amended, having Coordinates of X = 2,444,823.61 and Y = 254,997.00; thence East 8,466.11 feet to the Point of Beginning, containing **1,849.54 acres**, all as more particularly outlined on a plat on file in the Office of Mineral Resources, Department of Natural Resources. All bearings, distances and coordinates are based on Louisiana Coordinate System of 1927, (North or South Zone), where applicable.

NOTE: The above description of the Tract nominated for lease has been provided and corrected, where required, exclusively by the nomination party. Any mineral lease selected from this Tract and awarded by the Louisiana State Mineral and Energy Board shall be without warranty of any kind, either express, implied, or statutory, including, but not limited to, the implied warranties of merchantability and fitness for a particular purpose. Should the mineral lease awarded by the Louisiana State Mineral and Energy Board be subsequently modified, cancelled or abrogated due to the existence of conflicting leases, operating agreements, private claims or other future obligations or conditions which may affect all or any portion of the leased Tract, it shall not relieve the Lessee of the obligation to pay any bonus due thereon to the Louisiana State Mineral and Energy Board, nor shall the Louisiana State Mineral and Energy Board be obligated to refund any consideration paid by the Lessor prior to such modification, cancellation, or abrogation, including, but not limited to, bonuses, rentals and royalties.

NOTE: The State of Louisiana does hereby reserve, and this lease shall be subject to, the imprescriptible right of surface use in the nature of a servitude in favor of the Department of Natural Resources, including its Offices and Commissions, for the sole purpose of implementing, constructing, servicing and maintaining approved coastal zone management and/or restoration projects. Utilization of any and all rights derived under this lease by the mineral lessee, its agents, successors or assigns, shall not interfere with nor hinder the reasonable surface use by the Department of Natural Resources, its Offices or Commissions, as herein above reserved.

Applicant: CAILLIER ENERGY GROUP

Bidder	Cash Payment	Price/Acre	Rental	Oil	Gas	Other

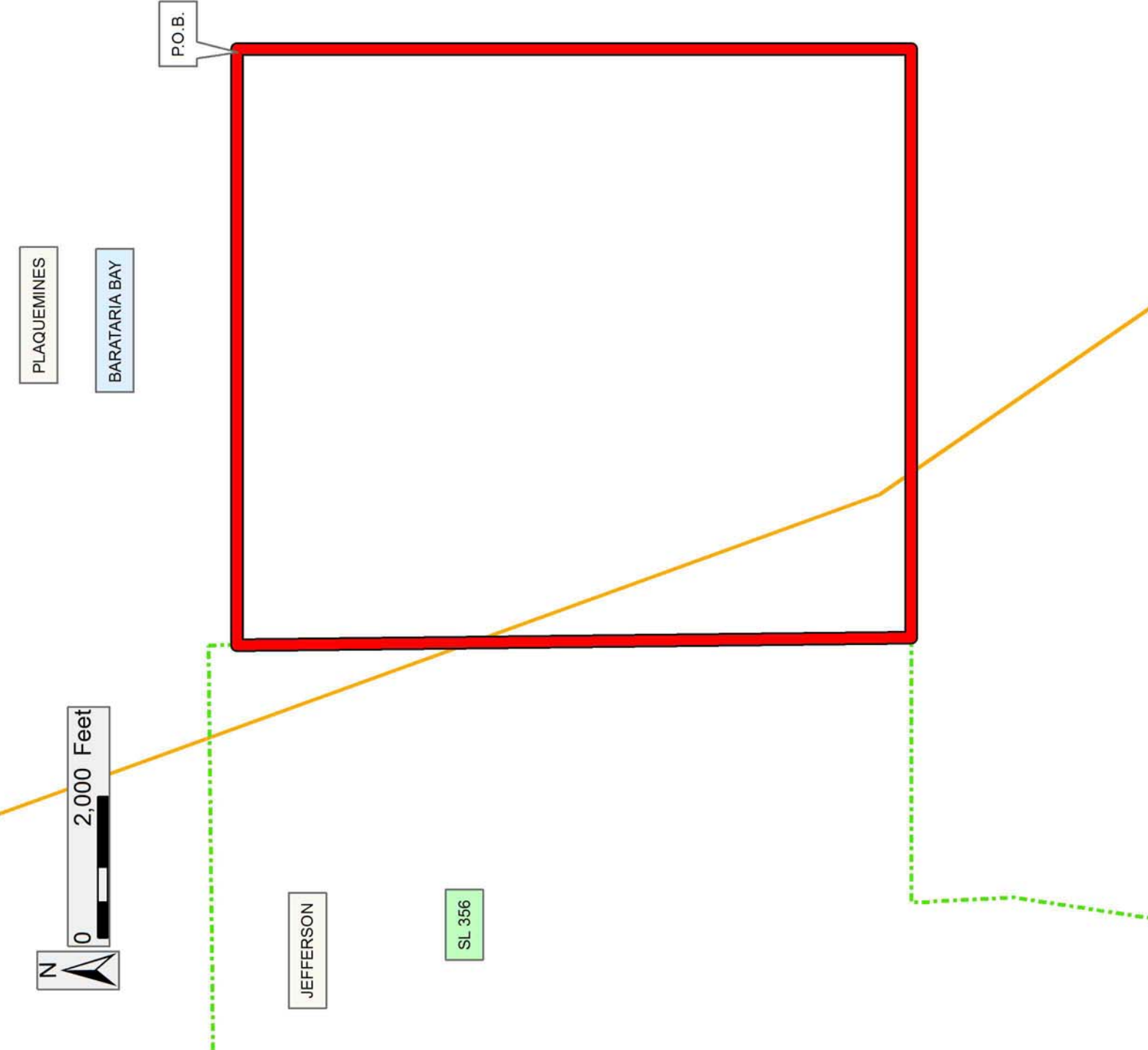
Legend

- 14020023
- Active_Leases
- Counties

PLAQUEMINES

BARATARIA BAY

P.O.B.



TRACT 43780 - Plaquemines Parish, Louisiana

All of the lands now or formerly constituting the beds and bottoms of all water bodies of every nature and description as to which title is vested in the State of Louisiana, together with all islands arising therein and other lands formed by accretion or by reliction, where allowed by law, excepting tax adjudicated lands, and not presently under mineral lease on February 12, 2014, situated in Plaquemines Parish, Louisiana, and more particularly described as follows: Beginning at a point having Coordinates of X = 2,538,872.00 and Y = 224,144.40; thence North 59 degrees 59 minutes 23 seconds West 7,798.16 feet to a point having Coordinates of X = 2,532,119.30 and Y = 228,044.70; thence North 60 degrees 13 minutes 24 seconds East 7,654.32 feet to a point having Coordinates of X = 2,538,763.00 and Y = 231,846.00; thence South 60 degrees 33 minutes 44 seconds East 3,935.06 feet to a point having Coordinates of X = 2,542,190.00 and Y = 229,912.00; thence South 70 degrees 15 minutes 23 seconds East 5,763.59 feet to a point having Coordinates of X = 2,547,614.77 and Y = 227,965.00; thence South 8,902.76 feet to a point having Coordinates of X = 2,547,614.77 and Y = 219,062.24; thence North 59 degrees 49 minutes 50 seconds West 10,112.59 feet to the point of beginning, containing approximately **2,193 acres**, all as more particularly outlined on a plat on file in the Office of Mineral Resources, Department of Natural Resources. All bearings, distances and coordinates are based on Louisiana Coordinate System of 1927, (North or South Zone), where applicable.

NOTE: The above description of the Tract nominated for lease has been provided and corrected, where required, exclusively by the nomination party. Any mineral lease selected from this Tract and awarded by the Louisiana State Mineral and Energy Board shall be without warranty of any kind, either express, implied, or statutory, including, but not limited to, the implied warranties of merchantability and fitness for a particular purpose. Should the mineral lease awarded by the Louisiana State Mineral and Energy Board be subsequently modified, cancelled or abrogated due to the existence of conflicting leases, operating agreements, private claims or other future obligations or conditions which may affect all or any portion of the leased Tract, it shall not relieve the Lessee of the obligation to pay any bonus due thereon to the Louisiana State Mineral and Energy Board, nor shall the Louisiana State Mineral and Energy Board be obligated to refund any consideration paid by the Lessor prior to such modification, cancellation, or abrogation, including, but not limited to, bonuses, rentals and royalties.

NOTE: The State of Louisiana does hereby reserve, and this lease shall be subject to, the imprescriptible right of surface use in the nature of a servitude in favor of the Department of Natural Resources, including its Offices and Commissions, for the sole purpose of implementing, constructing, servicing and maintaining approved coastal zone management and/or restoration projects. Utilization of any and all rights derived under this lease by the mineral lessee, its agents, successors or assigns,

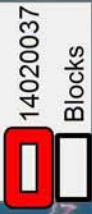
shall not interfere with nor hinder the reasonable surface use by the Department of Natural Resources, its Offices or Commissions, as herein above reserved.

NOTE: It appears, according to our records, that a portion of this Tract is located within the restrictive safety fairway area as set out by the Corps of Engineers, U.S. Army and/or the restrictive anchorage area as set out by the U.S. Coast Guard.

Applicant: ROBERT A. SCHROEDER, INC.

Bidder	Cash Payment	Price/Acre	Rental	Oil	Gas	Other

Legend



3,000 Feet

PLAQUEMINES

BASTIAN BAY

SHELL ISLAND BAY

P.O.B.

GULF OF MEXICO

WD0007

WEST DELTA AREA

WD0006

TRACT 43781 - Lafourche Parish, Louisiana

All of the lands now or formerly constituting the beds and bottoms of all water bodies of every nature and description as to which title is vested in the State of Louisiana, together with all islands arising therein and other lands formed by accretion or by reliction, where allowed by law, excepting tax adjudicated lands, and not presently under mineral lease on February 12, 2014, situated in Lafourche Parish, Louisiana, and more particularly described as follows: Beginning at a point having Coordinates of X = 2,354,700.00 and Y = 216,868.31; thence East 1,047.61 feet to the Southwest corner of State Lease No. 20973 having Coordinates of X = 2,355,747.61 and Y = 216,868.31; thence East 3,752.39 feet along the boundary of said State Lease No. 20973 to its Southeast corner having Coordinates of X = 2,359,500.00 and Y = 216,868.31; thence South 3,713.33 feet to a point having Coordinates of X = 2,359,500.00 and Y = 213,154.98; thence South 88 degrees 28 minutes 00 seconds West 4,801.72 feet to a point having Coordinates of X = 2,354,700.00 and Y = 213,026.50; thence North 3,841.81 feet to the point of beginning, (This lease includes only waterbottoms claimed and owned by the state and specifically excludes any land which the state may claim or own and to which the mineral rights are vested in the state), containing approximately **34 acres**, all as more particularly outlined on a plat on file in the Office of Mineral Resources, Department of Natural Resources. All bearings, distances and coordinates are based on Louisiana Coordinate System of 1927, (North or South Zone), where applicable.

NOTE: The above description of the Tract nominated for lease has been provided and corrected, where required, exclusively by the nomination party. Any mineral lease selected from this Tract and awarded by the Louisiana State Mineral and Energy Board shall be without warranty of any kind, either express, implied, or statutory, including, but not limited to, the implied warranties of merchantability and fitness for a particular purpose. Should the mineral lease awarded by the Louisiana State Mineral and Energy Board be subsequently modified, cancelled or abrogated due to the existence of conflicting leases, operating agreements, private claims or other future obligations or conditions which may affect all or any portion of the leased Tract, it shall not relieve the Lessee of the obligation to pay any bonus due thereon to the Louisiana State Mineral and Energy Board, nor shall the Louisiana State Mineral and Energy Board be obligated to refund any consideration paid by the Lessor prior to such modification, cancellation, or abrogation, including, but not limited to, bonuses, rentals and royalties.

NOTE: The State of Louisiana does hereby reserve, and this lease shall be subject to, the imprescriptible right of surface use in the nature of a servitude in favor of the Department of Natural Resources, including its Offices and Commissions, for the sole purpose of implementing, constructing, servicing and maintaining approved coastal zone management and/or restoration projects. Utilization of any and all rights derived under this lease by the mineral lessee, its agents, successors or assigns,

shall not interfere with nor hinder the reasonable surface use by the Department of Natural Resources, its Offices or Commissions, as herein above reserved.

Applicant: ALLEN & KIRMSE, LTD.

Bidder	Cash Payment	Price/Acre	Rental	Oil	Gas	Other

Legend

- 14020035 Active_Leases



TRACT 43782 - Lafourche Parish, Louisiana

All of the lands now or formerly constituting the beds and bottoms of all water bodies of every nature and description as to which title is vested in the State of Louisiana, together with all islands arising therein and other lands formed by accretion or by reliction, where allowed by law, excepting tax adjudicated lands, and not presently under mineral lease on February 12, 2014, situated in Lafourche Parish, Louisiana, and more particularly described as follows: Beginning at a point having Coordinates of X = 2,354,700.00 and Y = 213,026.50; thence North 88 degrees 28 minutes 00 seconds East 4,801.72 feet to a point having Coordinates of X = 2,359,500.00 and Y = 213,154.98; thence South 5,009.60 feet to a point having Coordinates of X = 2,359,500.00 and Y = 208,145.38; thence South 88 degrees 27 minutes 15 seconds West 4,801.75 feet to a point having Coordinates of X = 2,354,700.00 and Y = 208,015.85; thence North 5,010.65 feet to the point of beginning, (This lease includes only waterbottoms claimed and owned by the state and specifically excludes any land which the state may claim or own and to which the mineral rights are vested in the state), containing approximately **48 acres**, all as more particularly outlined on a plat on file in the Office of Mineral Resources, Department of Natural Resources. All bearings, distances and coordinates are based on Louisiana Coordinate System of 1927, (North or South Zone), where applicable.

NOTE: The above description of the Tract nominated for lease has been provided and corrected, where required, exclusively by the nomination party. Any mineral lease selected from this Tract and awarded by the Louisiana State Mineral and Energy Board shall be without warranty of any kind, either express, implied, or statutory, including, but not limited to, the implied warranties of merchantability and fitness for a particular purpose. Should the mineral lease awarded by the Louisiana State Mineral and Energy Board be subsequently modified, cancelled or abrogated due to the existence of conflicting leases, operating agreements, private claims or other future obligations or conditions which may affect all or any portion of the leased Tract, it shall not relieve the Lessee of the obligation to pay any bonus due thereon to the Louisiana State Mineral and Energy Board, nor shall the Louisiana State Mineral and Energy Board be obligated to refund any consideration paid by the Lessor prior to such modification, cancellation, or abrogation, including, but not limited to, bonuses, rentals and royalties.

NOTE: The State of Louisiana does hereby reserve, and this lease shall be subject to, the imprescriptible right of surface use in the nature of a servitude in favor of the Department of Natural Resources, including its Offices and Commissions, for the sole purpose of implementing, constructing, servicing and maintaining approved coastal zone management and/or restoration projects. Utilization of any and all rights derived under this lease by the mineral lessee, its agents, successors or assigns, shall not interfere with nor hinder the reasonable surface use by the

Department of Natural Resources, its Offices or Commissions, as herein above reserved.

Applicant: ALLEN & KIRMSE, LTD.

Bidder	Cash Payment	Price/Acre	Rental	Oil	Gas	Other

1402003



LAFOURCHE

T21S - R22E

BAYOU LAFOURCHE

P.O.B.

SOUTHWESTERN LOUISIANA CANAL

0 2,000 Feet

