

TRACT 43783 - Lafourche Parish, Louisiana

All of the lands now or formerly constituting the beds and bottoms of all water bodies of every nature and description as to which title is vested in the State of Louisiana, together with all islands arising therein and other lands formed by accretion or by reliction, where allowed by law, excepting tax adjudicated lands, and not presently under mineral lease on February 12, 2014, situated in Lafourche Parish, Louisiana, and more particularly described as follows: Beginning at a point having Coordinates of X = 2,354,700.00 and Y = 208,015.85; thence North 88 degrees 27 minutes 15 seconds East 4,801.75 feet to a point having Coordinates of X = 2,359,500.00 and Y = 208,145.38; thence South 5,009.38 feet to a point having Coordinates of X = 2,359,500.00 and Y = 203,136.00; thence South 88 degrees 08 minutes 19 seconds West 4,802.53 feet to a point having Coordinates of X = 2,354,700.00 and Y = 202,980.00; thence North 5,035.85 feet to the point of beginning, (This lease includes only waterbottoms claimed and owned by the state and specifically excludes any land which the state may claim or own and to which the mineral rights are vested in the state), containing approximately **66 acres**, all as more particularly outlined on a plat on file in the Office of Mineral Resources, Department of Natural Resources. All bearings, distances and coordinates are based on Louisiana Coordinate System of 1927, (North or South Zone), where applicable.

NOTE: The above description of the Tract nominated for lease has been provided and corrected, where required, exclusively by the nomination party. Any mineral lease selected from this Tract and awarded by the Louisiana State Mineral and Energy Board shall be without warranty of any kind, either express, implied, or statutory, including, but not limited to, the implied warranties of merchantability and fitness for a particular purpose. Should the mineral lease awarded by the Louisiana State Mineral and Energy Board be subsequently modified, cancelled or abrogated due to the existence of conflicting leases, operating agreements, private claims or other future obligations or conditions which may affect all or any portion of the leased Tract, it shall not relieve the Lessee of the obligation to pay any bonus due thereon to the Louisiana State Mineral and Energy Board, nor shall the Louisiana State Mineral and Energy Board be obligated to refund any consideration paid by the Lessor prior to such modification, cancellation, or abrogation, including, but not limited to, bonuses, rentals and royalties.

NOTE: The State of Louisiana does hereby reserve, and this lease shall be subject to, the imprescriptible right of surface use in the nature of a servitude in favor of the Department of Natural Resources, including its Offices and Commissions, for the sole purpose of implementing, constructing, servicing and maintaining approved coastal zone management and/or restoration projects. Utilization of any and all rights derived under this lease by the mineral lessee, its agents, successors or assigns, shall not interfere with nor hinder the reasonable surface use by the

Department of Natural Resources, its Offices or Commissions, as herein above reserved.

Applicant: ALLEN & KIRMSE, LTD.

Bidder	Cash Payment	Price/Acre	Rental	Oil	Gas	Other

Legend

14020033



T21S - R22E

LAFOURCHE



T22S - R22E

BAYOU LAFOURCHE

P.O.B.



TRACT 43784 - Terrebonne Parish, Louisiana

All of the lands now or formerly constituting the beds and bottoms of all water bodies of every nature and description as to which title is vested in the State of Louisiana, together with all islands arising therein and other lands formed by accretion or by reliction, where allowed by law, excepting tax adjudicated lands, and not presently under mineral lease on February 12, 2014, situated in Terrebonne Parish, Louisiana, and more particularly described as follows: Beginning at a point on the Southern boundary of State Lease No. 724, as amended having Coordinates of X = 2,172,200.00 and Y = 193,748.50; thence North 89 degrees 43 minutes 25 seconds East 14,646.63 feet along the Southern boundary of said State Lease No. 724 to its Southeast corner having Coordinates of X = 2,186,846.46 and Y = 193,819.16; thence South 10,198.16 feet to a point having Coordinates of X = 2,186,846.46 and Y = 183,621.00; thence West 14,646.46 feet to a point having Coordinates of X = 2,172,200.00 and Y = 183,621.00; thence North 10,127.50 feet to the point of beginning, containing approximately **1,188 acres**, all as more particularly outlined on a plat on file in the Office of Mineral Resources, Department of Natural Resources. All bearings, distances and coordinates are based on Louisiana Coordinate System of 1927, (North or South Zone), where applicable.

NOTE: The above description of the Tract nominated for lease has been provided and corrected, where required, exclusively by the nomination party. Any mineral lease selected from this Tract and awarded by the Louisiana State Mineral and Energy Board shall be without warranty of any kind, either express, implied, or statutory, including, but not limited to, the implied warranties of merchantability and fitness for a particular purpose. Should the mineral lease awarded by the Louisiana State Mineral and Energy Board be subsequently modified, cancelled or abrogated due to the existence of conflicting leases, operating agreements, private claims or other future obligations or conditions which may affect all or any portion of the leased Tract, it shall not relieve the Lessee of the obligation to pay any bonus due thereon to the Louisiana State Mineral and Energy Board, nor shall the Louisiana State Mineral and Energy Board be obligated to refund any consideration paid by the Lessor prior to such modification, cancellation, or abrogation, including, but not limited to, bonuses, rentals and royalties.

NOTE: The State of Louisiana does hereby reserve, and this lease shall be subject to, the imprescriptible right of surface use in the nature of a servitude in favor of the Department of Natural Resources, including its Offices and Commissions, for the sole purpose of implementing, constructing, servicing and maintaining approved coastal zone management and/or restoration projects. Utilization of any and all rights derived under this lease by the mineral lessee, its agents, successors or assigns, shall not interfere with nor hinder the reasonable surface use by the Department of Natural Resources, its Offices or Commissions, as herein above reserved.

Applicant: CYPRESS ENERGY CORPORATION

Bidder	Cash Payment	Price/Acre	Rental	Oil	Gas	Other

Legend



14020048



Active_Leases



SL 724

TERREBONNE

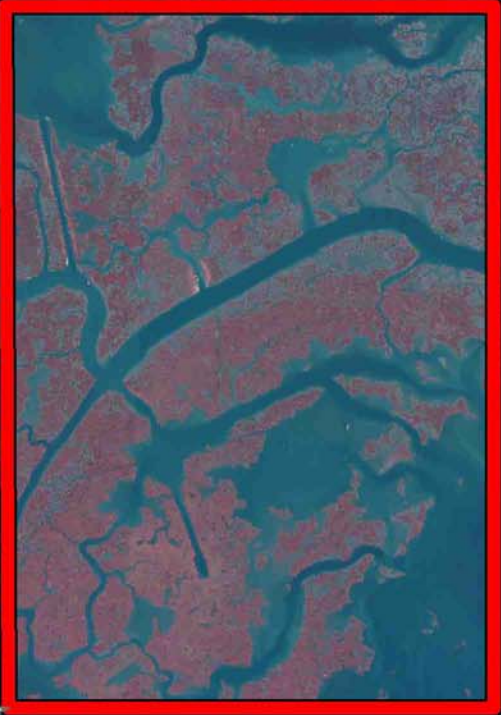
BAYOU COLYELL

P.O.B.

BAY CHARLIE

T22S - R17E

MANGROVE BAY



TRACT 43785 - Terrebonne Parish, Louisiana

All of the lands now or formerly constituting the beds and bottoms of all water bodies of every nature and description as to which title is vested in the State of Louisiana, together with all islands arising therein and other lands formed by accretion or by reliction, where allowed by law, excepting tax adjudicated lands, and not presently under mineral lease on February 12, 2014, situated in Terrebonne Parish, Louisiana, and more particularly described as follows: Beginning at a point having Coordinates of X = 2,158,200.00 and Y = 193,716.35; thence East 7,336.31 feet to the Southwest corner of State Lease No. 724, as amended having Coordinates of X = 2,165,536.31 and Y = 193,716.36; thence North 89 degrees 43 minutes 25 seconds East 6,663.77 feet along the Southern boundary of said State Lease No. 724 to a point having Coordinates of X = 2,172,200.00 and Y = 193,748.50; thence South 10,127.50 feet to a point having Coordinates of X = 2,172,200.00 and Y = 183,621.00; thence West 14,000.00 feet to a point having Coordinates of X = 2,158,200.00 and Y = 183,621.00; thence North 10,095.35 feet to the point of beginning, containing approximately **1,106 acres**, all as more particularly outlined on a plat on file in the Office of Mineral Resources, Department of Natural Resources. All bearings, distances and coordinates are based on Louisiana Coordinate System of 1927, (North or South Zone), where applicable.

NOTE: The above description of the Tract nominated for lease has been provided and corrected, where required, exclusively by the nomination party. Any mineral lease selected from this Tract and awarded by the Louisiana State Mineral and Energy Board shall be without warranty of any kind, either express, implied, or statutory, including, but not limited to, the implied warranties of merchantability and fitness for a particular purpose. Should the mineral lease awarded by the Louisiana State Mineral and Energy Board be subsequently modified, cancelled or abrogated due to the existence of conflicting leases, operating agreements, private claims or other future obligations or conditions which may affect all or any portion of the leased Tract, it shall not relieve the Lessee of the obligation to pay any bonus due thereon to the Louisiana State Mineral and Energy Board, nor shall the Louisiana State Mineral and Energy Board be obligated to refund any consideration paid by the Lessor prior to such modification, cancellation, or abrogation, including, but not limited to, bonuses, rentals and royalties.

NOTE: The State of Louisiana does hereby reserve, and this lease shall be subject to, the imprescriptible right of surface use in the nature of a servitude in favor of the Department of Natural Resources, including its Offices and Commissions, for the sole purpose of implementing, constructing, servicing and maintaining approved coastal zone management and/or restoration projects. Utilization of any and all rights derived under this lease by the mineral lessee, its agents, successors or assigns, shall not interfere with nor hinder the reasonable surface use by the Department of Natural Resources, its Offices or Commissions, as herein above reserved.

Applicant: CYPRESS ENERGY CORPORATION

Bidder	Cash Payment	Price/Acre	Rental	Oil	Gas	Other

Legend

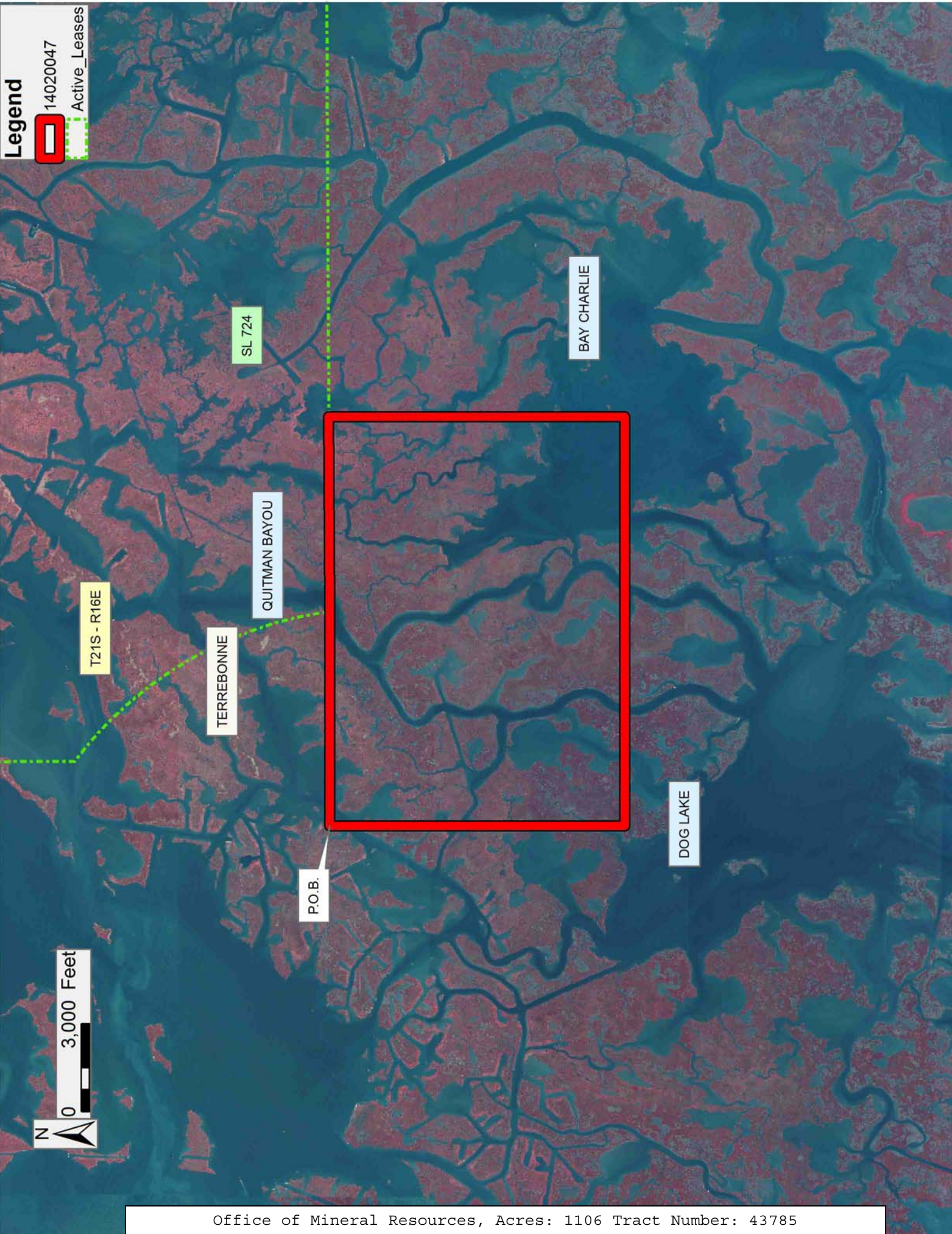
14020047



Active_Leases



0 3,000 Feet



TRACT 43786 - Terrebonne Parish, Louisiana

All of the lands now or formerly constituting the beds and bottoms of all water bodies of every nature and description as to which title is vested in the State of Louisiana, together with all islands arising therein and other lands formed by accretion or by reliction, where allowed by law, excepting tax adjudicated lands, and not presently under mineral lease on February 12, 2014, situated in Terrebonne Parish, Louisiana, and more particularly described as follows: Beginning at a point having Coordinates of X = 2,158,200.00 and Y = 183,621.00; thence East 14,000.00 feet to a point having Coordinates of X = 2,172,200.00 and Y = 183,621.00; thence South 10,221.00 feet to a point being the Northwest corner of State Lease No. 21090 having Coordinates of X = 2,172,200.00 and Y = 173,400.00; thence South 1,400.00 feet along the West boundary of said State Lease No. 21090 to a point having Coordinates of X = 2,172,200.00 and Y = 172,000.00; thence West 14,000.00 feet to a point having Coordinates of X = 2,158,200.00 and Y = 172,000.00; North 11,621.00 feet to the point of beginning, **LESS AND EXCEPT** any right, title, and interest in lands owned by and not under lease from the State of Louisiana, on behalf of the Terrebonne Parish School Board, situated in Section 16, Township 22 South, Range 16 East, Terrebonne Parish, Louisiana, contained within the above described tract, containing approximately **2,275 acres**, all as more particularly outlined on a plat on file in the Office of Mineral Resources, Department of Natural Resources. All bearings, distances and coordinates are based on Louisiana Coordinate System of 1927, (North or South Zone), where applicable.

NOTE: The above description of the Tract nominated for lease has been provided and corrected, where required, exclusively by the nomination party. Any mineral lease selected from this Tract and awarded by the Louisiana State Mineral and Energy Board shall be without warranty of any kind, either express, implied, or statutory, including, but not limited to, the implied warranties of merchantability and fitness for a particular purpose. Should the mineral lease awarded by the Louisiana State Mineral and Energy Board be subsequently modified, cancelled or abrogated due to the existence of conflicting leases, operating agreements, private claims or other future obligations or conditions which may affect all or any portion of the leased Tract, it shall not relieve the Lessee of the obligation to pay any bonus due thereon to the Louisiana State Mineral and Energy Board, nor shall the Louisiana State Mineral and Energy Board be obligated to refund any consideration paid by the Lessor prior to such modification, cancellation, or abrogation, including, but not limited to, bonuses, rentals and royalties.

NOTE: The State of Louisiana does hereby reserve, and this lease shall be subject to, the imprescriptible right of surface use in the nature of a servitude in favor of the Department of Natural Resources, including its Offices and Commissions, for the sole purpose of implementing, constructing, servicing and maintaining approved coastal zone management and/or restoration projects. Utilization of any and all rights derived

under this lease by the mineral lessee, its agents, successors or assigns, shall not interfere with nor hinder the reasonable surface use by the Department of Natural Resources, its Offices or Commissions, as herein above reserved.

Applicant: CYPRESS ENERGY CORPORATION

Bidder	Cash Payment	Price/Acre	Rental	Oil	Gas	Other

Legend
14020050
Active_Leases



TERREBONNE

QUITMAN BAYOU

P.O.B.

DOG LAKE



SL 21090

CALIFORNIA BAY

GRAND PASS DES ILETTES

TRACT 43787 - Terrebonne Parish, Louisiana

All of the lands now or formerly constituting the beds and bottoms of all water bodies of every nature and description as to which title is vested in the State of Louisiana, together with all islands arising therein and other lands formed by accretion or by reliction, where allowed by law, excepting tax adjudicated lands, and not presently under mineral lease on February 12, 2014, situated in Terrebonne Parish, Louisiana, and more particularly described as follows: Beginning at a point having Coordinates of X = 2,172,200.00 and Y = 183,621.00; thence East 14,646.46 feet to a point having Coordinates of X = 2,186,846.46 and Y = 183,621.00; thence South 3,501.73 feet to a point being the Northwest corner of State Lease No. 21091 having Coordinates 2,186,846.46 and Y = 180,119.27; thence South 4,000.00 feet along the West boundary of said State Lease No. 21091 to its Southwest corner having Coordinates of X = 2,186,846.46 and Y = 176,119.27; thence South 01 degrees 38 minutes 41 seconds East 442.46 feet to a point on the North boundary of State Lease No. 21092 having Coordinates of X = 2,186,859.16 and Y = 175,676.99; thence along the boundary of said State Lease No. 21092 the following courses: West 1,736.93 feet to a point being its Northwest corner having Coordinates of X = 2,185,122.23 and Y = 175,676.99 and South 4,157.85 feet to a point being its Southwest corner having Coordinates of X = 2,185,122.23 and Y = 171,519.14; thence South 819.14 feet to a point having Coordinates of X = 2,185,122.23 and Y = 170,700.00; thence West 9,722.23 feet to a point being the Southeast corner of State Lease No. 21090 having Coordinates of X = 2,175,400.00 and Y = 170,700.00; thence along the boundary of said State Lease No. 21090 the following courses: North 2,700.00 feet to a point being its Northeast corner having Coordinates of X = 2,175,400.00 and Y = 173,400.00 and West 3,200.00 feet to a point being its Northwest corner having Coordinates of X = 2,172,200.00 and Y = 173,400.00; thence North 10,221.00 feet to the point of beginning, **LESS AND EXCEPT** any right, title, and interest in lands owned by and not under lease from the State of Louisiana, on behalf of the Terrebonne Parish School Board, situated in Section 16, Township 22 South, Range 17 East, Terrebonne Parish, Louisiana, contained within the above described tract, containing approximately **2,059 acres**, all as more particularly outlined on a plat on file in the Office of Mineral Resources, Department of Natural Resources. All bearings, distances and coordinates are based on Louisiana Coordinate System of 1927, (North or South Zone), where applicable.

NOTE: The above description of the Tract nominated for lease has been provided and corrected, where required, exclusively by the nomination party. Any mineral lease selected from this Tract and awarded by the Louisiana State Mineral and Energy Board shall be without warranty of any kind, either express, implied, or statutory, including, but not limited to, the implied warranties of merchantability and fitness for a particular purpose. Should the mineral lease awarded by the Louisiana State Mineral and Energy Board be subsequently modified, cancelled or abrogated due to the existence of conflicting leases, operating agreements, private claims or other future obligations or conditions which may affect all or any

portion of the leased Tract, it shall not relieve the Lessee of the obligation to pay any bonus due thereon to the Louisiana State Mineral and Energy Board, nor shall the Louisiana State Mineral and Energy Board be obligated to refund any consideration paid by the Lessor prior to such modification, cancellation, or abrogation, including, but not limited to, bonuses, rentals and royalties.

NOTE: The State of Louisiana does hereby reserve, and this lease shall be subject to, the imprescriptible right of surface use in the nature of a servitude in favor of the Department of Natural Resources, including its Offices and Commissions, for the sole purpose of implementing, constructing, servicing and maintaining approved coastal zone management and/or restoration projects. Utilization of any and all rights derived under this lease by the mineral lessee, its agents, successors or assigns, shall not interfere with nor hinder the reasonable surface use by the Department of Natural Resources, its Offices or Commissions, as herein above reserved.

Applicant: CYPRESS ENERGY CORPORATION

Bidder	Cash Payment	Price/Acre	Rental	Oil	Gas	Other

Legend

14020049



Active_Leases

TERREBONNE

BAYOU COLYELL

MANGROVE BAY

SL 21091

SL 21092

BIG MISALE BAYOU

CALIFORNIA BAY

SL 21090

P.O.B.

BAY CHARLIE



3,000 Feet



TRACT 43788 - Terrebonne Parish, Louisiana

All of the lands now or formerly constituting the beds and bottoms of all water bodies of every nature and description as to which title is vested in the State of Louisiana, together with all islands arising therein and other lands formed by accretion or by reliction, where allowed by law, excepting tax adjudicated lands, and not presently under mineral lease on February 12, 2014, situated in Terrebonne Parish, Louisiana, and more particularly described as follows: Beginning at a point having Coordinates of X = 2,158,200.00 and Y = 172,000.00; thence East 14,000.00 feet to a point on the West boundary of State Lease No. 21090 having Coordinates of X = 2,172,200.00 and Y = 172,000.00; thence South 1,300.00 feet along the West boundary of said State Lease No. 21090 to its Southwest corner having Coordinates of X = 2,172,200.00 and Y = 170,700.00; thence South 9,900.00 feet to a point having Coordinates of X = 2,172,200.00 and Y = 160,800.00; thence West 14,000.00 feet to a point having Coordinates of X = 2,158,200.00 and Y = 160,800.00; thence North 11,200.00 feet to the point of beginning, containing approximately **2,493**, all as more particularly outlined on a plat on file in the Office of Mineral Resources, Department of Natural Resources. All bearings, distances and coordinates are based on Louisiana Coordinate System of 1927, (North or South Zone), where applicable.

NOTE: The above description of the Tract nominated for lease has been provided and corrected, where required, exclusively by the nomination party. Any mineral lease selected from this Tract and awarded by the Louisiana State Mineral and Energy Board shall be without warranty of any kind, either express, implied, or statutory, including, but not limited to, the implied warranties of merchantability and fitness for a particular purpose. Should the mineral lease awarded by the Louisiana State Mineral and Energy Board be subsequently modified, cancelled or abrogated due to the existence of conflicting leases, operating agreements, private claims or other future obligations or conditions which may affect all or any portion of the leased Tract, it shall not relieve the Lessee of the obligation to pay any bonus due thereon to the Louisiana State Mineral and Energy Board, nor shall the Louisiana State Mineral and Energy Board be obligated to refund any consideration paid by the Lessor prior to such modification, cancellation, or abrogation, including, but not limited to, bonuses, rentals and royalties.

NOTE: The State of Louisiana does hereby reserve, and this lease shall be subject to, the imprescriptible right of surface use in the nature of a servitude in favor of the Department of Natural Resources, including its Offices and Commissions, for the sole purpose of implementing, constructing, servicing and maintaining approved coastal zone management and/or restoration projects. Utilization of any and all rights derived under this lease by the mineral lessee, its agents, successors or assigns, shall not interfere with nor hinder the reasonable surface use by the Department of Natural Resources, its Offices or Commissions, as herein above reserved.

Applicant: CYPRESS ENERGY CORPORATION

Bidder	Cash Payment	Price/Acre	Rental	Oil	Gas	Other

Legend



14020046

Active_Leases

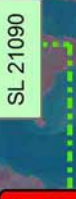


0 3,000 Feet

TERREBONNE

GRAND PASS DES ILETTES

P.O.B.



SL 21090

PELICAN LAKE

TRACT 43789 - Terrebonne Parish, Louisiana

All of the lands now or formerly constituting the beds and bottoms of all water bodies of every nature and description as to which title is vested in the State of Louisiana, together with all islands arising therein and other lands formed by accretion or by reliction, where allowed by law, excepting tax adjudicated lands, and not presently under mineral lease on February 12, 2014, situated in Terrebonne Parish, Louisiana, and more particularly described as follows: Beginning at a point having Coordinates of X = 2,172,200.00 and Y = 160,204.40; thence North 10,495.60 feet to the Southwest corner of State Lease No. 21090 having Coordinates of X = 2,172,200.00 and Y = 170,700.00; thence East 3,200.00 feet along the Southern boundary of said State Lease No. 21090 to a point being its Southeast corner having Coordinates of X = 2,175,400.00 and Y = 170,700.00; thence East 9,722.23 feet to point having Coordinates of X = 2,185,122.23 and Y = 170,700.00; thence South 10,495.60 feet to a point X = 2,185,122.23 and Y = 160,204.40; thence West 12,922.23 feet to the point of beginning, containing approximately **2,327 acres**, all as more particularly outlined on a plat on file in the Office of Mineral Resources, Department of Natural Resources. All bearings, distances and coordinates are based on Louisiana Coordinate System of 1927, (North or South Zone), where applicable.

NOTE: The above description of the Tract nominated for lease has been provided and corrected, where required, exclusively by the nomination party. Any mineral lease selected from this Tract and awarded by the Louisiana State Mineral and Energy Board shall be without warranty of any kind, either express, implied, or statutory, including, but not limited to, the implied warranties of merchantability and fitness for a particular purpose. Should the mineral lease awarded by the Louisiana State Mineral and Energy Board be subsequently modified, cancelled or abrogated due to the existence of conflicting leases, operating agreements, private claims or other future obligations or conditions which may affect all or any portion of the leased Tract, it shall not relieve the Lessee of the obligation to pay any bonus due thereon to the Louisiana State Mineral and Energy Board, nor shall the Louisiana State Mineral and Energy Board be obligated to refund any consideration paid by the Lessor prior to such modification, cancellation, or abrogation, including, but not limited to, bonuses, rentals and royalties.

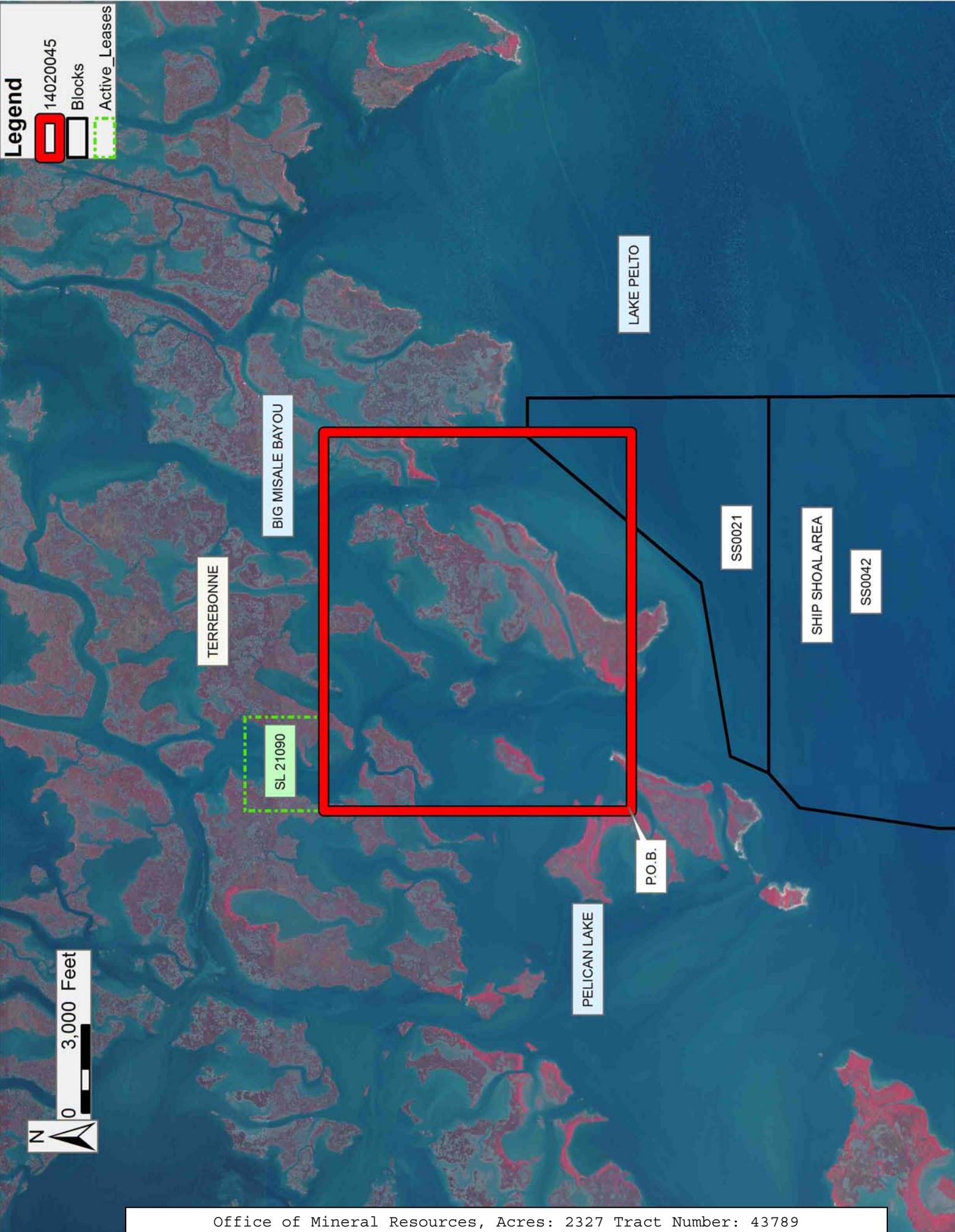
NOTE: The State of Louisiana does hereby reserve, and this lease shall be subject to, the imprescriptible right of surface use in the nature of a servitude in favor of the Department of Natural Resources, including its Offices and Commissions, for the sole purpose of implementing, constructing, servicing and maintaining approved coastal zone management and/or restoration projects. Utilization of any and all rights derived under this lease by the mineral lessee, its agents, successors or assigns, shall not interfere with nor hinder the reasonable surface use by the Department of Natural Resources, its Offices or Commissions, as herein above reserved.

Applicant: CYPRESS ENERGY CORPORATION

Bidder	Cash Payment	Price/Acre	Rental	Oil	Gas	Other

Legend

- 14020045
- Blocks
- Active_Leases



BIG MISALE BAYOU

TERREBONNE

SL 21090

LAKE PELTO

SS0021

SHIP SHOAL AREA

SS0042

PELICAN LAKE

P.O.B.