

**TRACT 43800 - Bossier Parish, Louisiana**

All of the lands now or formerly constituting the beds and bottoms of all water bodies of every nature and description as to which title is vested in the State of Louisiana, together with all islands arising therein and other lands formed by accretion or by reliction, where allowed by law, excepting tax adjudicated lands, and not presently under mineral lease on March 12, 2014, situated in Bossier Parish, Louisiana, and more particularly described as follows: Beginning at a point being the Northeast corner of State Lease No. 19349 having Coordinates of X = 1,645,728.17 and Y = 652,045.02; thence North 5,339.22 feet to a point having Coordinates of X = 1,645,728.17 and Y = 657,384.24; thence South 86 degrees 54 minutes 21 seconds East 5,789.52 feet to a point having Coordinates of X = 1,651,509.25 and Y = 657,071.74; thence South 02 degrees 05 minutes 35 seconds West 5,232.86 feet to a point having Coordinates of X = 1,651,318.12 and Y = 651,842.37; thence South 89 degrees 30 minutes 36 seconds East 5,334.38 feet to a point having Coordinates of X = 1,656,652.31 and Y = 651,796.75; thence South 00 degrees 20 minutes 46 seconds West 5,196.84 feet to a point on the North boundary of State Lease No. 20354, as amended having Coordinates of X = 1,656,620.91 and Y = 646,600.00; thence West 224.22 feet along the North boundary of said State Lease No. 20354 to its Northwest corner having Coordinates of X = 1,656,396.70 and Y = 646,600.00, said point also being the Northeast corner of State Lease No. 20881; thence West 10,668.53 feet along the North boundary of said State Lease No. 20881 to its Northwest corner, having Coordinates of X = 1,645,728.17 and Y = 646,600.00, said point also being on the Eastern boundary of said State Lease No. 19349; thence North 5,445.02 feet along the Eastern boundary of said State Lease No. 19349 to the point of beginning, containing approximately **19 acres**, all as more particularly outlined on a plat on file in the Office of Mineral Resources, Department of Natural Resources. All bearings, distances and coordinates are based on Louisiana Coordinate System of 1927, (North or South Zone), where applicable.

NOTE: The above description of the Tract nominated for lease has been provided and corrected, where required, exclusively by the nomination party. Any mineral lease selected from this Tract and awarded by the Louisiana State Mineral and Energy Board shall be without warranty of any kind, either express, implied, or statutory, including, but not limited to, the implied warranties of merchantability and fitness for a particular purpose. Should the mineral lease awarded by the Louisiana State Mineral and Energy Board be subsequently modified, cancelled or abrogated due to the existence of conflicting leases, operating agreements, private claims or other future obligations or conditions which may affect all or any portion of the leased Tract, it shall not relieve the Lessee of the obligation to pay any bonus due thereon to the Louisiana State Mineral and Energy Board, nor shall the Louisiana State Mineral and Energy Board be obligated to refund any consideration paid by the Lessor prior to such modification, cancellation, or abrogation, including, but not limited to, bonuses, rentals and royalties.

NOTE: The Office of Mineral Resources will require a minimum bonus of \$1000 per acre and a minimum royalty of 25%.

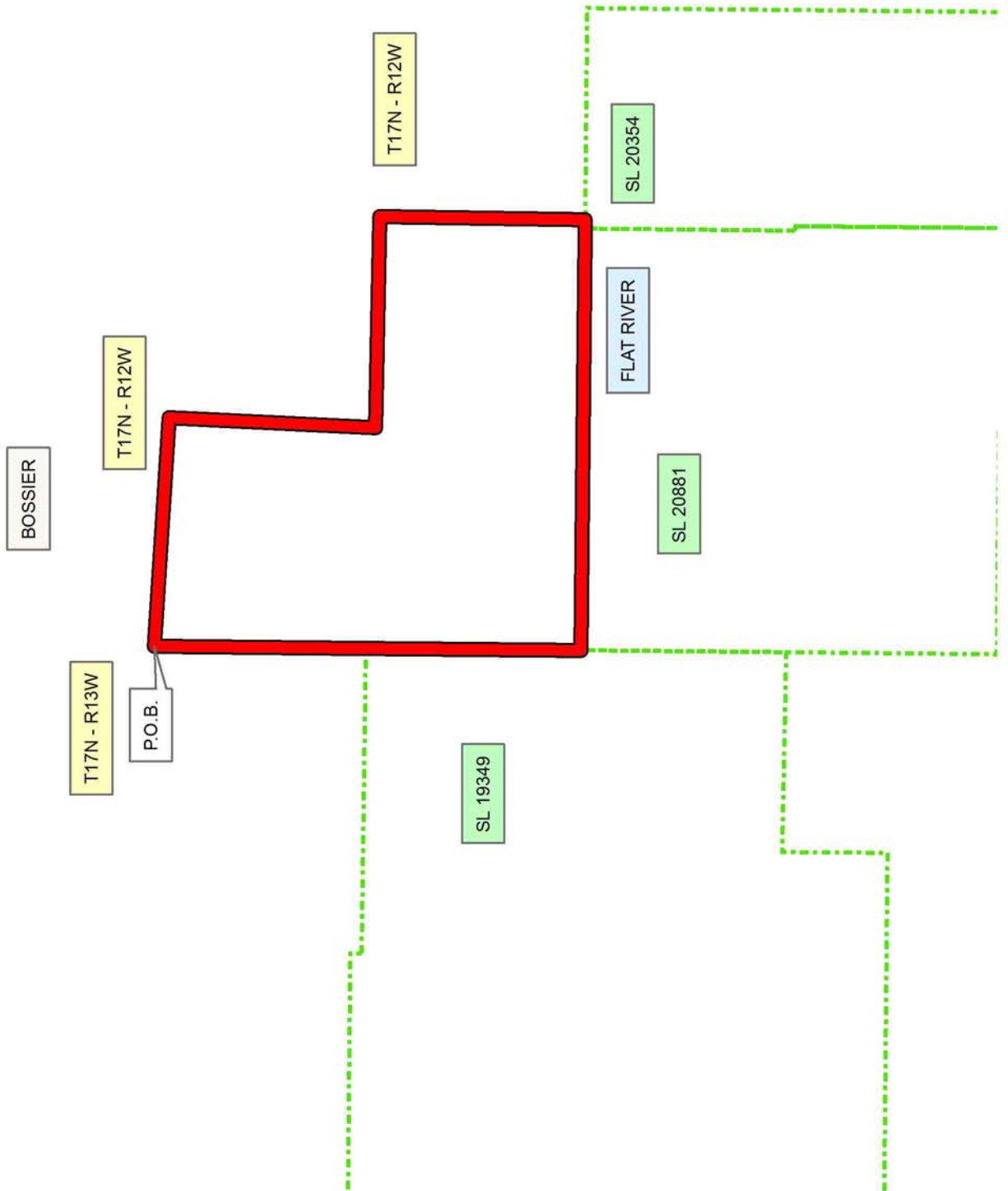
Applicant: STAFF OFFICE OF MINERAL RESOURCES

Bidder	Cash Payment	Price/Acre	Rental	Oil	Gas	Other

**Legend**

14030002

Active\_Leases



**TRACT 43801 - Portion of Blocks 1, and 2, Breton Sound Area, Blocks 68, and 69, Chandeleur Sound Area, St. Bernard Parish, Louisiana**

All of the lands now or formerly constituting the beds and bottoms of all water bodies of every nature and description as to which title is vested in the State of Louisiana, together with all islands arising therein and other lands formed by accretion or by reliction, where allowed by law, excepting tax adjudicated lands, and not presently under mineral lease on March 12, 2014, situated in St. Bernard Parish, Louisiana, and more particularly described as follows: Beginning at a point within Block 68, Chandeleur Sound Area, having Coordinates of X = 2,650,523.48 and Y = 381,833.00; thence South 503.00 feet to a point on the common block line between Block 68, Chandeleur Sound Area and Block 2, Breton Sound Area having Coordinates of X = 2,650,523.48 and Y = 381,330.00; thence South 6,674.00 feet to a point having Coordinates of X = 2,650,523.48 and Y = 374,656.00; thence West 423.48 feet to a point on the common block line between said Block 2, and Block 1, Breton Sound Area, having Coordinates of X = 2,650,100.00 and Y = 374,656.00; thence West 14,750.00 feet to a point on the West line of said Block 1 having Coordinates of X = 2,635,350.00 and Y = 374,656.00; thence North 6,674.00 feet along the West line of said Block 1 to a point on the common block line between said Block 1 and said Block 69, having Coordinates of X = 2,635,350.00 and Y = 381,330.00; thence North 503.02 feet along the West line of said Block 69, to a point having Coordinates of X = 2,635,350.00 and Y = 381,833.00; thence East 1,476.00 feet to a point being the Southernmost Southwest corner of State Lease No. 16799, having Coordinates of X = 2,636,826.00 and Y = 381,833.00; thence East 8,714.00 feet along the Southern boundary of said State Lease No. 16799 to its Southeast corner, having Coordinates of X = 2,645,540.00 and Y = 381,833.00; thence East 4,560.00 feet to a point on the common block line between said Block 69 and said Block 68, having Coordinates of X = 2,650,100.00 and Y = 381,833.00; thence East 423.48 feet to the point of beginning, containing **2,500 acres**, all as more particularly outlined on a plat on file in the Office of Mineral Resources, Department of Natural Resources. All bearings, distances and coordinates are based on Louisiana Coordinate System of 1927, (North or South Zone), where applicable.

NOTE: The above description of the Tract nominated for lease has been provided and corrected, where required, exclusively by the nomination party. Any mineral lease selected from this Tract and awarded by the Louisiana State Mineral and Energy Board shall be without warranty of any kind, either express, implied, or statutory, including, but not limited to, the implied warranties of merchantability and fitness for a particular purpose. Should the mineral lease awarded by the Louisiana State Mineral and Energy Board be subsequently modified, cancelled or abrogated due to the existence of conflicting leases, operating agreements, private claims or other future obligations or conditions which may affect all or any portion of the leased Tract, it shall not relieve the Lessee of the obligation to pay any bonus due thereon to the Louisiana State Mineral and Energy Board, nor shall the Louisiana State Mineral and Energy Board be

obligated to refund any consideration paid by the Lessor prior to such modification, cancellation, or abrogation, including, but not limited to, bonuses, rentals and royalties.

NOTE: The State of Louisiana does hereby reserve, and this lease shall be subject to, the imprescriptible right of surface use in the nature of a servitude in favor of the Department of Natural Resources, including its Offices and Commissions, for the sole purpose of implementing, constructing, servicing and maintaining approved coastal zone management and/or restoration projects. Utilization of any and all rights derived under this lease by the mineral lessee, its agents, successors or assigns, shall not interfere with nor hinder the reasonable surface use by the Department of Natural Resources, its Offices or Commissions, as herein above reserved.

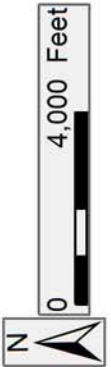
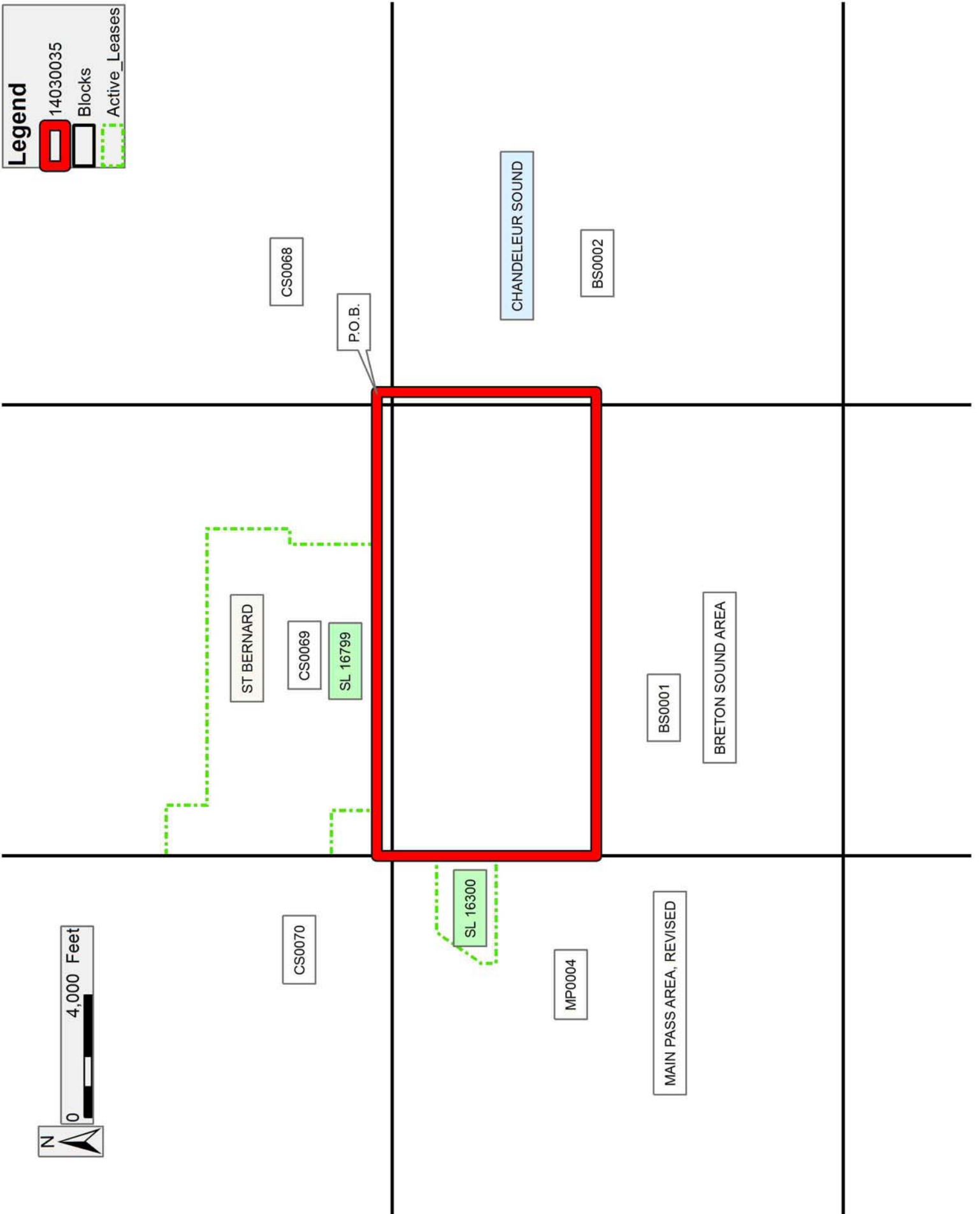
NOTE: This tract is located in an area designated by the Louisiana Legislature or the Wildlife and Fisheries Commission as a Public Oyster Seed Ground, Reservation, or area of Calcasieu or Sabine Lake. Proposed projects occurring in these areas will be evaluated on a case by case basis by Louisiana Department of Wildlife & Fisheries. Modifications to proposed project features including, but not limited to, access routes, well sites, flowlines, and appurtenant structures maybe required by the Louisiana Department of Wildlife and Fisheries. In addition, compensatory mitigation will be required to offset unavoidable habitat impacts.

Applicant: MITCHELL OIL & GAS, LLC

Bidder	Cash Payment	Price/Acre	Rental	Oil	Gas	Other

**Legend**

- 14030035
- Blocks
- Active\_Leases



**TRACT 43802 - Portion of Blocks 15, 16, 21, and 22, Main Pass Area, Revised, Plaquemines Parish, Louisiana**

All of the lands now or formerly constituting the beds and bottoms of all water bodies of every nature and description as to which title is vested in the State of Louisiana, together with all islands arising therein and other lands formed by accretion or by reliction, where allowed by law, excepting tax adjudicated lands, and not presently under mineral lease on March 12, 2014, situated in Plaquemines Parish, Louisiana, and more particularly described as follows: Beginning at a point within Block 16, Main Pass Area, Revised, having Coordinates of X = 2,628,877.00 and Y = 337,580.00; thence South 500.00 feet to a point on the common block line between said Block 16 and Block 21, Main Pass Area, Revised, having Coordinates of X = 2,628,877.00 and Y = 337,080.00; thence South 5,566.95 feet to the Northwest corner of said State Lease No. 15536 to a point having Coordinates of X = 2,628,877.00 and Y = 331,513.05; thence South 3,835.05 feet along said State Lease No. 15536 to its Southwest corner, having Coordinates of X = 2,628,877.00 and Y = 327,678.00; thence South 500.00 feet to a point having Coordinates of X = 2,628,877.00 and Y = 327,178.00; thence West 8,277.00 feet to a point on the common block line between said Block 21 and Block 22, Main Pass Area, Revised, having Coordinates of X = 2,620,600.00 and Y = 327,178.00; thence West 2,192.14 feet to a point having Coordinates of X = 2,618,407.86 and Y = 327,178.00; thence North 9,902.00 feet to a point on the common block line between said Block 22 and Block 15, Main Pass Area, Revised, having Coordinates of X = 2,618,407.86 and Y = 337,080.00; thence North 500.00 feet to a point having Coordinates of X = 2,618,407.86 and Y = 337,580.00; thence East 2,192.14 feet to a point on the common block line between said Block 15 and Block 16, Main Pass Area, Revised, having Coordinates of X = 2,620,600.00 and Y = 337,580.00; thence East 8,277.00 feet to the point of beginning, containing **2,500 acres**, all as more particularly outlined on a plat on file in the Office of Mineral Resources, Department of Natural Resources. All bearings, distances and coordinates are based on Louisiana Coordinate System of 1927, (North or South Zone), where applicable.

NOTE: The above description of the Tract nominated for lease has been provided and corrected, where required, exclusively by the nomination party. Any mineral lease selected from this Tract and awarded by the Louisiana State Mineral and Energy Board shall be without warranty of any kind, either express, implied, or statutory, including, but not limited to, the implied warranties of merchantability and fitness for a particular purpose. Should the mineral lease awarded by the Louisiana State Mineral and Energy Board be subsequently modified, cancelled or abrogated due to the existence of conflicting leases, operating agreements, private claims or other future obligations or conditions which may affect all or any portion of the leased Tract, it shall not relieve the Lessee of the obligation to pay any bonus due thereon to the Louisiana State Mineral and Energy Board, nor shall the Louisiana State Mineral and Energy Board be obligated to refund any consideration paid by the Lessor prior to such

modification, cancellation, or abrogation, including, but not limited to, bonuses, rentals and royalties.

NOTE: The State of Louisiana does hereby reserve, and this lease shall be subject to, the imprescriptible right of surface use in the nature of a servitude in favor of the Department of Natural Resources, including its Offices and Commissions, for the sole purpose of implementing, constructing, servicing and maintaining approved coastal zone management and/or restoration projects. Utilization of any and all rights derived under this lease by the mineral lessee, its agents, successors or assigns, shall not interfere with nor hinder the reasonable surface use by the Department of Natural Resources, its Offices or Commissions, as herein above reserved.

NOTE: This tract is located in an area designated by the Louisiana Legislature or the Wildlife and Fisheries Commission as a Public Oyster Seed Ground, Reservation, or area of Calcasieu or Sabine Lake. Proposed projects occurring in these areas will be evaluated on a case by case basis by Louisiana Department of Wildlife & Fisheries. Modifications to proposed project features including, but not limited to, access routes, well sites, flowlines, and appurtenant structures maybe required by the Louisiana Department of Wildlife and Fisheries. In addition, compensatory mitigation will be required to offset unavoidable habitat impacts.

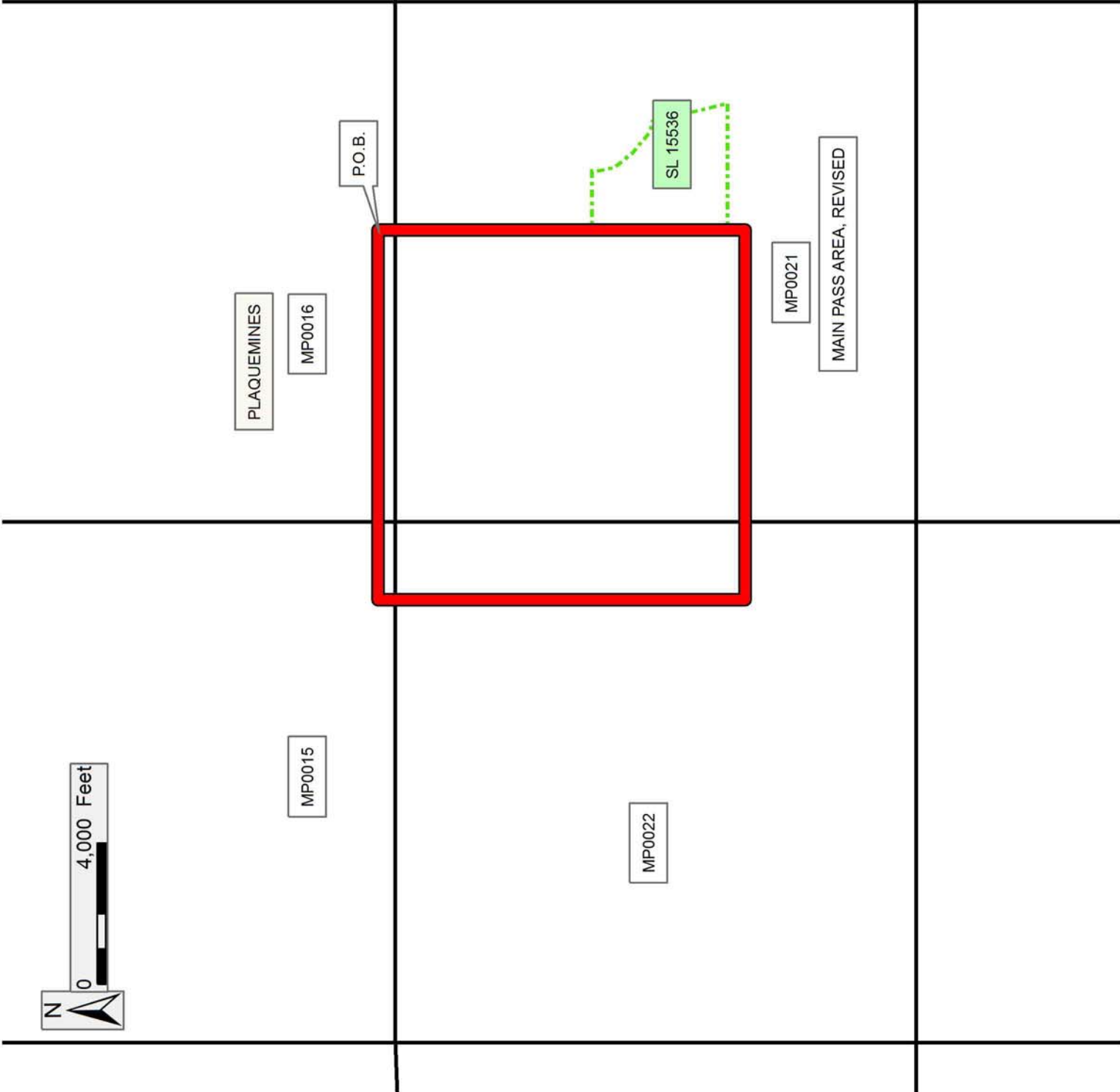
Applicant: MITCHELL OIL & GAS, LLC

Bidder	Cash Payment	Price/Acre	Rental	Oil	Gas	Other



**Legend**

- 14030039
- Blocks
- Active\_Leases



**TRACT 43803 - Portion of Blocks 30, and 35, Breton Sound Area, Plaquemines Parish, Louisiana**

All of the lands now or formerly constituting the beds and bottoms of all water bodies of every nature and description as to which title is vested in the State of Louisiana, together with all islands arising therein and other lands formed by accretion or by reliction, where allowed by law, excepting tax adjudicated lands, and not presently under mineral lease on March 12, 2014, situated in Plaquemines Parish, Louisiana, and more particularly described as follows: Beginning at a point on the East line of Block 30, Breton Sound Area, having Coordinates of X = 2,679,600.00 and Y = 326,205.00; thence South 3,875.00 feet along the East line of said Block 30 to its Southeast corner, having Coordinates of X = 2,679,600.00 and Y = 322,330.00, said point also being the Northeast corner of Block 35, Breton Sound Area; thence South 5,050.00 feet along the East line of said Block 35 to a point having Coordinates of X = 2,679,600.00 and Y = 317,280.00; thence West 12,201.68 feet to a point having Coordinates of X = 2,667,398.32 and Y = 317,280.00; thence North 5,050.00 feet to a point on the North line of said Block 35 having Coordinates of X = 2,667,398.32 and Y = 322,330.00, said point also being the South line of said Block 30; thence North 3,875.00 feet to a point having Coordinates of X = 2,667,398.32 and Y = 326,205.00; thence East 12,201.68 feet to the point of beginning, containing **2,500 acres**, all as more particularly outlined on a plat on file in the Office of Mineral Resources, Department of Natural Resources. All bearings, distances and coordinates are based on Louisiana Coordinate System of 1927, (North or South Zone), where applicable.

NOTE: The above description of the Tract nominated for lease has been provided and corrected, where required, exclusively by the nomination party. Any mineral lease selected from this Tract and awarded by the Louisiana State Mineral and Energy Board shall be without warranty of any kind, either express, implied, or statutory, including, but not limited to, the implied warranties of merchantability and fitness for a particular purpose. Should the mineral lease awarded by the Louisiana State Mineral and Energy Board be subsequently modified, cancelled or abrogated due to the existence of conflicting leases, operating agreements, private claims or other future obligations or conditions which may affect all or any portion of the leased Tract, it shall not relieve the Lessee of the obligation to pay any bonus due thereon to the Louisiana State Mineral and Energy Board, nor shall the Louisiana State Mineral and Energy Board be obligated to refund any consideration paid by the Lessor prior to such modification, cancellation, or abrogation, including, but not limited to, bonuses, rentals and royalties.

NOTE: The State of Louisiana does hereby reserve, and this lease shall be subject to, the imprescriptible right of surface use in the nature of a servitude in favor of the Department of Natural Resources, including its Offices and Commissions, for the sole purpose of implementing, constructing, servicing and maintaining approved coastal zone management and/or restoration projects. Utilization of any and all rights derived

under this lease by the mineral lessee, its agents, successors or assigns, shall not interfere with nor hinder the reasonable surface use by the Department of Natural Resources, its Offices or Commissions, as herein above reserved.

NOTE: It appears, according to our records, that a portion of this Tract is located within the restrictive safety fairway area as set out by the Corps of Engineers, U.S. Army and/or the restrictive anchorage area as set out by the U.S. Coast Guard.

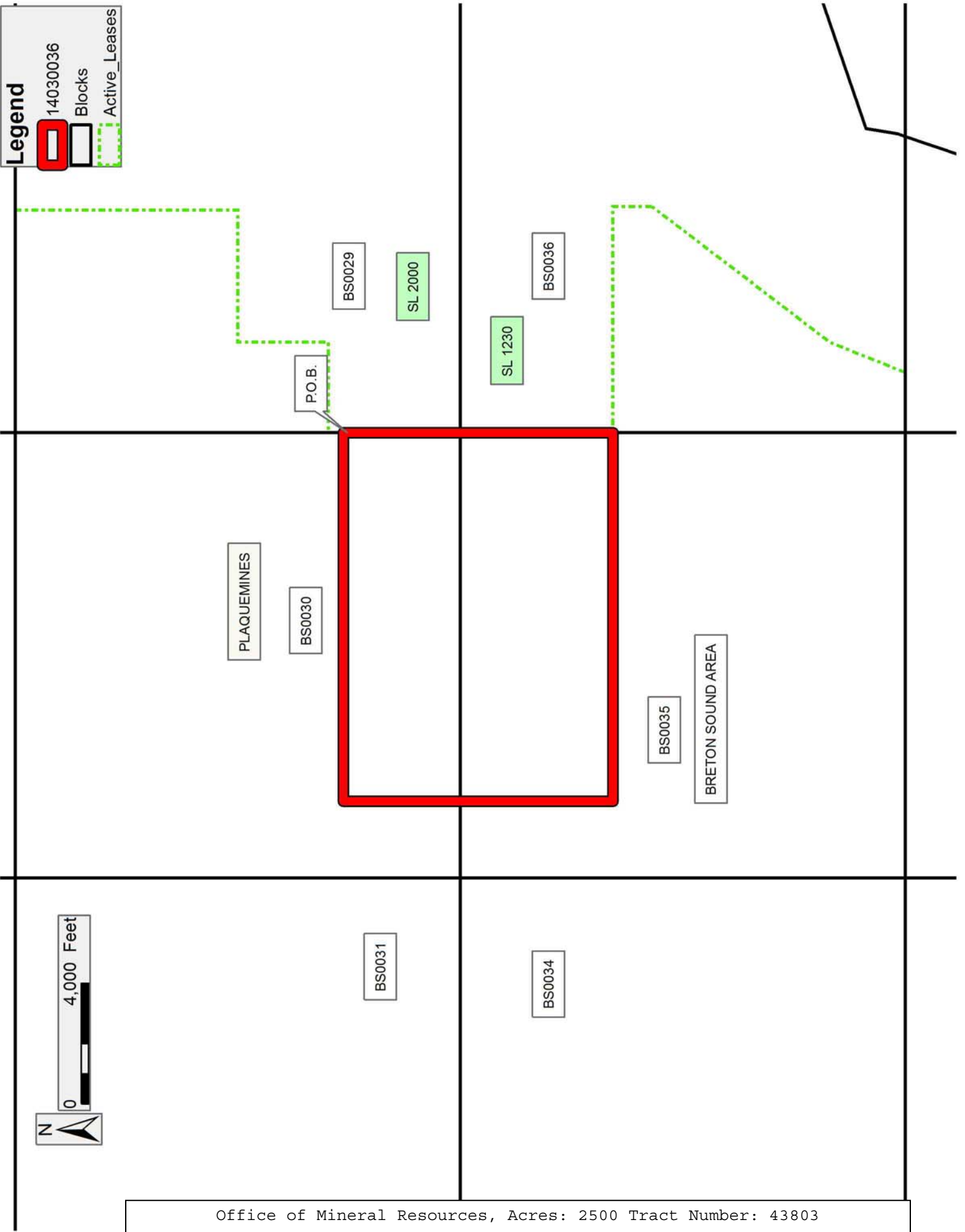
NOTE: This tract is located in an area designated by the Louisiana Legislature or the Wildlife and Fisheries Commission as a Public Oyster Seed Ground, Reservation, or area of Calcasieu or Sabine Lake. Proposed projects occurring in these areas will be evaluated on a case by case basis by Louisiana Department of Wildlife & Fisheries. Modifications to proposed project features including, but not limited to, access routes, well sites, flowlines, and appurtenant structures maybe required by the Louisiana Department of Wildlife and Fisheries. In addition, compensatory mitigation will be required to offset unavoidable habitat impacts.

Applicant: MITCHELL OIL & GAS, LLC

Bidder	Cash Payment	Price/Acre	Rental	Oil	Gas	Other

**Legend**

- 14030036
- Blocks
- Active\_Leases



**TRACT 43804 - Portion of Block 24, Main Pass Area, Revised, Plaquemines Parish, Louisiana**

All of the lands now or formerly constituting the beds and bottoms of all water bodies of every nature and description as to which title is vested in the State of Louisiana, together with all islands arising therein and other lands formed by accretion or by reliction, where allowed by law, excepting tax adjudicated lands, and not presently under mineral lease on March 12, 2014, situated in Plaquemines Parish, Louisiana, and more particularly described as follows: Beginning at a point having Coordinates of X = 2,605,850.00 and Y = 307,580.00, said point being the Southeast corner of Block 24, Main Pass Area, Revised; thence West 12,038.11 feet along the South line of said Block 24, Main Pass Area, Revised, to a point having Coordinates of X = 2,593,811.89 and Y = 307,580.00, said point being the southwest corner of said Block 24, Main Pass Area, Revised; thence on and along the West line of said Block 24, Main Pass Area, Revised, the following courses: North 00 degrees 56 minutes 00 seconds West 6,356.46 feet to a point having Coordinates of X = 2,593,708.35 and Y = 313,935.61 and North 22 degrees 40 minutes 52 seconds East 1,113.80 feet to a point having Coordinates of X = 2,594,137.84 and Y = 314,963.28; thence East 11,712.16 feet to a point having Coordinates of X = 2,605,850.00 and Y = 314,963.28, said point being on the East line of said Block 24, Main Pass Area, Revised; thence South 7,383.28 feet along said East line of said Block 24, Main Pass Area, Revised, to the point of beginning, containing approximately **2,045.35 acres**, all as more particularly outlined on a plat on file in the Office of Mineral Resources, Department of Natural Resources. All bearings, distances and coordinates are based on Louisiana Coordinate System of 1927, (North or South Zone), where applicable.

NOTE: The above description of the Tract nominated for lease has been provided and corrected, where required, exclusively by the nomination party. Any mineral lease selected from this Tract and awarded by the Louisiana State Mineral and Energy Board shall be without warranty of any kind, either express, implied, or statutory, including, but not limited to, the implied warranties of merchantability and fitness for a particular purpose. Should the mineral lease awarded by the Louisiana State Mineral and Energy Board be subsequently modified, cancelled or abrogated due to the existence of conflicting leases, operating agreements, private claims or other future obligations or conditions which may affect all or any portion of the leased Tract, it shall not relieve the Lessee of the obligation to pay any bonus due thereon to the Louisiana State Mineral and Energy Board, nor shall the Louisiana State Mineral and Energy Board be obligated to refund any consideration paid by the Lessor prior to such modification, cancellation, or abrogation, including, but not limited to, bonuses, rentals and royalties.

NOTE: The State of Louisiana does hereby reserve, and this lease shall be subject to, the imprescriptible right of surface use in the nature of a servitude in favor of the Department of Natural Resources, including its

Offices and Commissions, for the sole purpose of implementing, constructing, servicing and maintaining approved coastal zone management and/or restoration projects. Utilization of any and all rights derived under this lease by the mineral lessee, its agents, successors or assigns, shall not interfere with nor hinder the reasonable surface use by the Department of Natural Resources, its Offices or Commissions, as herein above reserved.

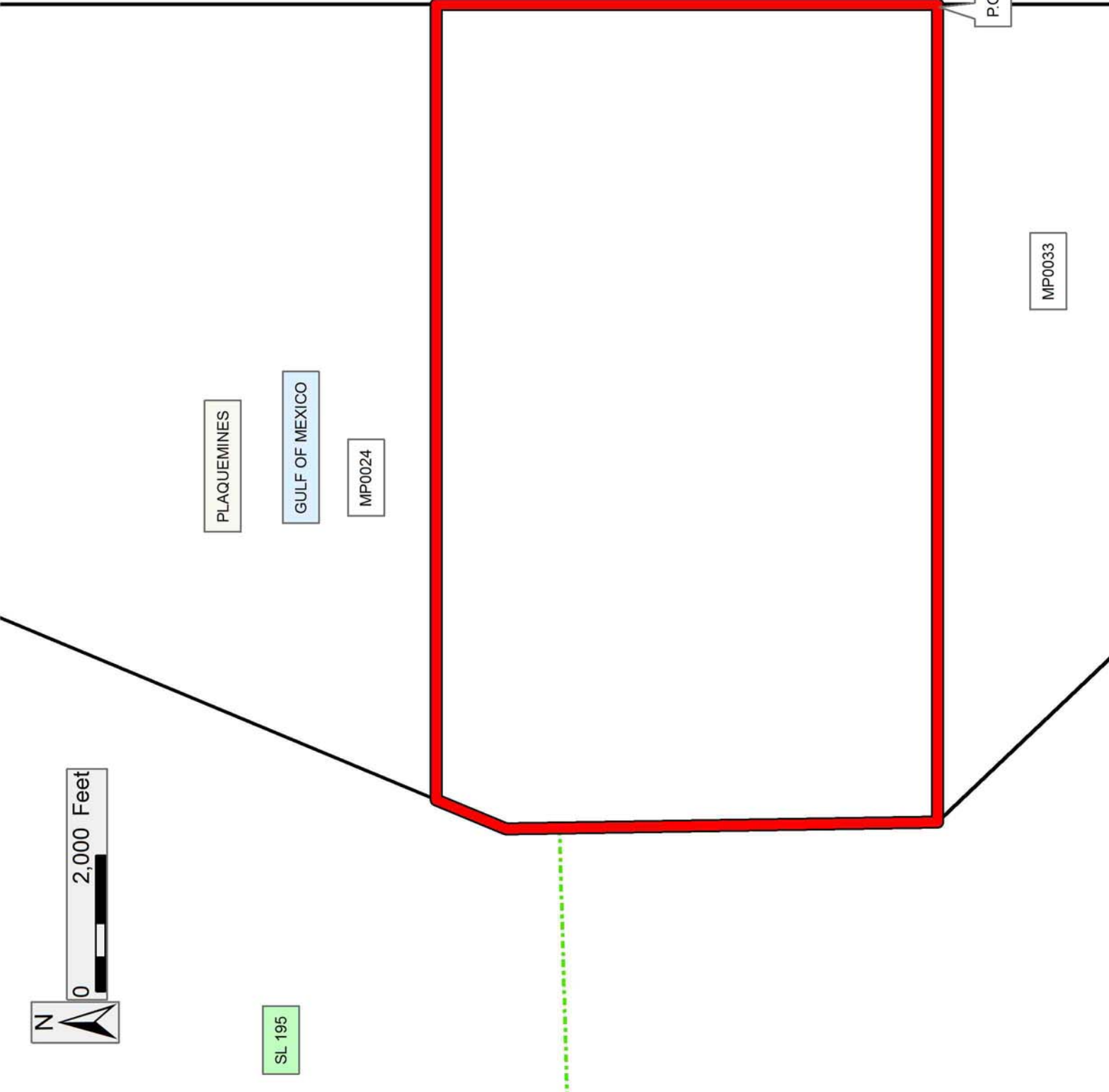
NOTE: This tract is located in an area designated by the Louisiana Legislature or the Wildlife and Fisheries Commission as a Public Oyster Seed Ground, Reservation, or area of Calcasieu or Sabine Lake. Proposed projects occurring in these areas will be evaluated on a case by case basis by Louisiana Department of Wildlife & Fisheries. Modifications to proposed project features including, but not limited to, access routes, well sites, flowlines, and appurtenant structures maybe required by the Louisiana Department of Wildlife and Fisheries. In addition, compensatory mitigation will be required to offset unavoidable habitat impacts.

Applicant: ROBERT A. SCHROEDER, INC.

Bidder	Cash Payment	Price/Acre	Rental	Oil	Gas	Other

**Legend**

- 14030012
- Blocks
- Active\_Leases



SL 195

**TRACT 43805 - Plaquemines Parish, Louisiana**

All of the lands now or formerly constituting the beds and bottoms of all water bodies of every nature and description as to which title is vested in the State of Louisiana, together with all islands arising therein and other lands formed by accretion or by reliction, where allowed by law, excepting tax adjudicated lands, and not presently under mineral lease on March 12, 2014, situated in Plaquemines Parish, Louisiana, and more particularly described as follows: Beginning at a point having Coordinates of X = 2,557,248.59 and Y = 309,580.00; thence East 13,976.54 feet to a point having Coordinates of X = 2,571,225.13 and Y = 309,580.00; thence South 2,050.00 feet to a point having Coordinates of X = 2,571,225.13 and Y = 307,530.00; East 1,023.46 feet to a point having Coordinates of X = 2,572,248.59 and Y = 307,530.00; thence South 5,517.48 feet to a point having Coordinates of X = 2,572,248.59 and Y = 302,012.52; West 15,000.00 feet to a point having Coordinates of X = 2,557,248.59 and Y = 302,012.52; thence North 7,567.48 feet to the point of beginning, containing approximately **2,402 acres**, all as more particularly outlined on a plat on file in the Office of Mineral Resources, Department of Natural Resources. All bearings, distances and coordinates are based on Louisiana Coordinate System of 1927, (North or South Zone), where applicable.

NOTE: The above description of the Tract nominated for lease has been provided and corrected, where required, exclusively by the nomination party. Any mineral lease selected from this Tract and awarded by the Louisiana State Mineral and Energy Board shall be without warranty of any kind, either express, implied, or statutory, including, but not limited to, the implied warranties of merchantability and fitness for a particular purpose. Should the mineral lease awarded by the Louisiana State Mineral and Energy Board be subsequently modified, cancelled or abrogated due to the existence of conflicting leases, operating agreements, private claims or other future obligations or conditions which may affect all or any portion of the leased Tract, it shall not relieve the Lessee of the obligation to pay any bonus due thereon to the Louisiana State Mineral and Energy Board, nor shall the Louisiana State Mineral and Energy Board be obligated to refund any consideration paid by the Lessor prior to such modification, cancellation, or abrogation, including, but not limited to, bonuses, rentals and royalties.

NOTE: The State of Louisiana does hereby reserve, and this lease shall be subject to, the imprescriptible right of surface use in the nature of a servitude in favor of the Department of Natural Resources, including its Offices and Commissions, for the sole purpose of implementing, constructing, servicing and maintaining approved coastal zone management and/or restoration projects. Utilization of any and all rights derived under this lease by the mineral lessee, its agents, successors or assigns, shall not interfere with nor hinder the reasonable surface use by the Department of Natural Resources, its Offices or Commissions, as herein above reserved.



NOTE: This tract is located in an area designated by the Louisiana Legislature or the Wildlife and Fisheries Commission as a Public Oyster Seed Ground, Reservation, or area of Calcasieu or Sabine Lake. Proposed projects occurring in these areas will be evaluated on a case by case basis by Louisiana Department of Wildlife & Fisheries. Modifications to proposed project features including, but not limited to, access routes, well sites, flowlines, and appurtenant structures maybe required by the Louisiana Department of Wildlife and Fisheries. In addition, compensatory mitigation will be required to offset unavoidable habitat impacts.

Applicant: ROBERT A. SCHROEDER, INC.

Bidder	Cash Payment	Price/Acre	Rental	Oil	Gas	Other

Legend



14030017

GULF OF MEXICO

PLAQUEMINES

P.O.B.

3,000 Feet



**TRACT 43806 - Plaquemines Parish, Louisiana**

All of the lands now or formerly constituting the beds and bottoms of all water bodies of every nature and description as to which title is vested in the State of Louisiana, together with all islands arising therein and other lands formed by accretion or by reliction, where allowed by law, excepting tax adjudicated lands, and not presently under mineral lease on March 12, 2014, situated in Plaquemines Parish, Louisiana, and more particularly described as follows: Beginning at a point having Coordinates of X = 2,572,248.59 and Y = 307,530.00; Thence East 14,468.85 feet to a point having Coordinates of X = 2,586,717.44 and Y = 307,530.00; Thence South 7,517.48 feet to a point having Coordinates of X = 2,586,717.44 and Y = 300,012.52; Thence West 14,468.85 feet to a point having Coordinates of X = 2,572,248.59 and Y = 300,012.52; Thence North 7,517.48 feet to the Point of Beginning, containing approximately **2,497.00 acres**, all as more particularly outlined on a plat on file in the Office of Mineral Resources, Department of Natural Resources. All bearings, distances and coordinates are based on Louisiana Coordinate System of 1927, (North or South Zone), where applicable.

NOTE: The above description of the Tract nominated for lease has been provided and corrected, where required, exclusively by the nomination party. Any mineral lease selected from this Tract and awarded by the Louisiana State Mineral and Energy Board shall be without warranty of any kind, either express, implied, or statutory, including, but not limited to, the implied warranties of merchantability and fitness for a particular purpose. Should the mineral lease awarded by the Louisiana State Mineral and Energy Board be subsequently modified, cancelled or abrogated due to the existence of conflicting leases, operating agreements, private claims or other future obligations or conditions which may affect all or any portion of the leased Tract, it shall not relieve the Lessee of the obligation to pay any bonus due thereon to the Louisiana State Mineral and Energy Board, nor shall the Louisiana State Mineral and Energy Board be obligated to refund any consideration paid by the Lessor prior to such modification, cancellation, or abrogation, including, but not limited to, bonuses, rentals and royalties.

NOTE: The State of Louisiana does hereby reserve, and this lease shall be subject to, the imprescriptible right of surface use in the nature of a servitude in favor of the Department of Natural Resources, including its Offices and Commissions, for the sole purpose of implementing, constructing, servicing and maintaining approved coastal zone management and/or restoration projects. Utilization of any and all rights derived under this lease by the mineral lessee, its agents, successors or assigns, shall not interfere with nor hinder the reasonable surface use by the Department of Natural Resources, its Offices or Commissions, as herein above reserved.

NOTE: This tract is located in an area designated by the Louisiana Legislature or the Wildlife and Fisheries Commission as a Public Oyster

Seed Ground, Reservation, or area of Calcasieu or Sabine Lake. Proposed projects occurring in these areas will be evaluated on a case by case basis by Louisiana Department of Wildlife & Fisheries. Modifications to proposed project features including, but not limited to, access routes, well sites, flowlines, and appurtenant structures maybe required by the Louisiana Department of Wildlife and Fisheries. In addition, compensatory mitigation will be required to offset unavoidable habitat impacts.

Applicant: ROBERT A. SCHROEDER, INC.

Bidder	Cash Payment	Price/Acre	Rental	Oil	Gas	Other

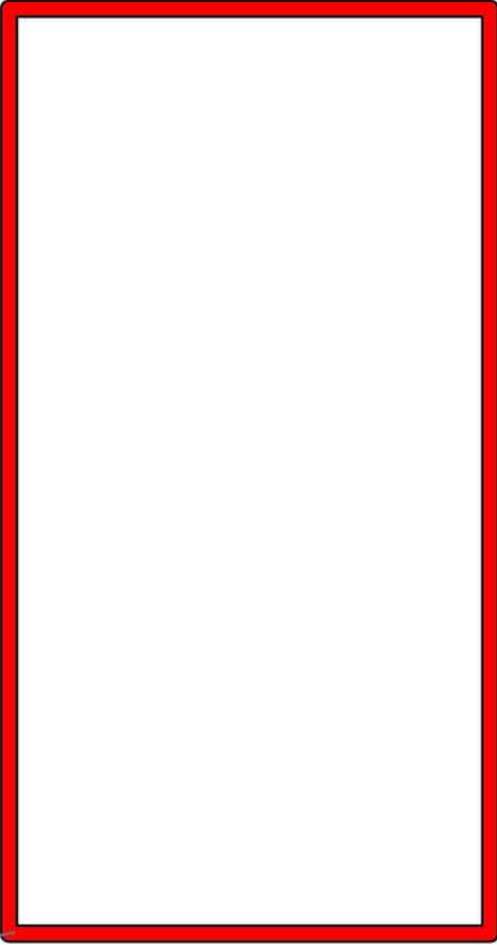
Legend  
14030015



PLAQUEMINES

GULF OF MEXICO

P.O.B.



**TRACT 43807 - Portion of Block 33, Main Pass Area, Revised, Plaquemines Parish, Louisiana**

All of the lands now or formerly constituting the beds and bottoms of all water bodies of every nature and description as to which title is vested in the State of Louisiana, together with all islands arising therein and other lands formed by accretion or by reliction, where allowed by law, excepting tax adjudicated lands, and not presently under mineral lease on March 12, 2014, situated in Plaquemines Parish, Louisiana, and more particularly described as follows: Beginning at a point having Coordinates of X = 2,586,717.44 and Y = 307,580.00; thence East 7,094.45 feet to a point having Coordinates of X = 2,593,811.89 and Y = 307,580.00, said point being the Northwest corner of Block 33, Main Pass Area, Revised; thence East 7,278.81 feet along the North line of said Block 33, Main Pass Area, Revised, to a point having Coordinates of X = 2,601,090.70 and Y = 307,580.00; thence South 7,567.48 feet to a point having Coordinates of X = 2,601,090.70 and Y = 300,012.52; thence West 2,400.72 feet to a point having Coordinates of X = 2,598,689.98 and Y = 300,012.52, said point being on the West line of said Block 33, Main Pass Area, Revised; thence West 11,972.54 feet to a point having Coordinates of X = 2,586,717.44 and Y = 300,012.52; thence North 7,567.48 feet to the point of beginning, containing approximately **2,497.00 acres**, all as more particularly outlined on a plat on file in the Office of Mineral Resources, Department of Natural Resources. All bearings, distances and coordinates are based on Louisiana Coordinate System of 1927, (North or South Zone), where applicable.

NOTE: The above description of the Tract nominated for lease has been provided and corrected, where required, exclusively by the nomination party. Any mineral lease selected from this Tract and awarded by the Louisiana State Mineral and Energy Board shall be without warranty of any kind, either express, implied, or statutory, including, but not limited to, the implied warranties of merchantability and fitness for a particular purpose. Should the mineral lease awarded by the Louisiana State Mineral and Energy Board be subsequently modified, cancelled or abrogated due to the existence of conflicting leases, operating agreements, private claims or other future obligations or conditions which may affect all or any portion of the leased Tract, it shall not relieve the Lessee of the obligation to pay any bonus due thereon to the Louisiana State Mineral and Energy Board, nor shall the Louisiana State Mineral and Energy Board be obligated to refund any consideration paid by the Lessor prior to such modification, cancellation, or abrogation, including, but not limited to, bonuses, rentals and royalties.

NOTE: The State of Louisiana does hereby reserve, and this lease shall be subject to, the imprescriptible right of surface use in the nature of a servitude in favor of the Department of Natural Resources, including its Offices and Commissions, for the sole purpose of implementing, constructing, servicing and maintaining approved coastal zone management and/or restoration projects. Utilization of any and all rights derived

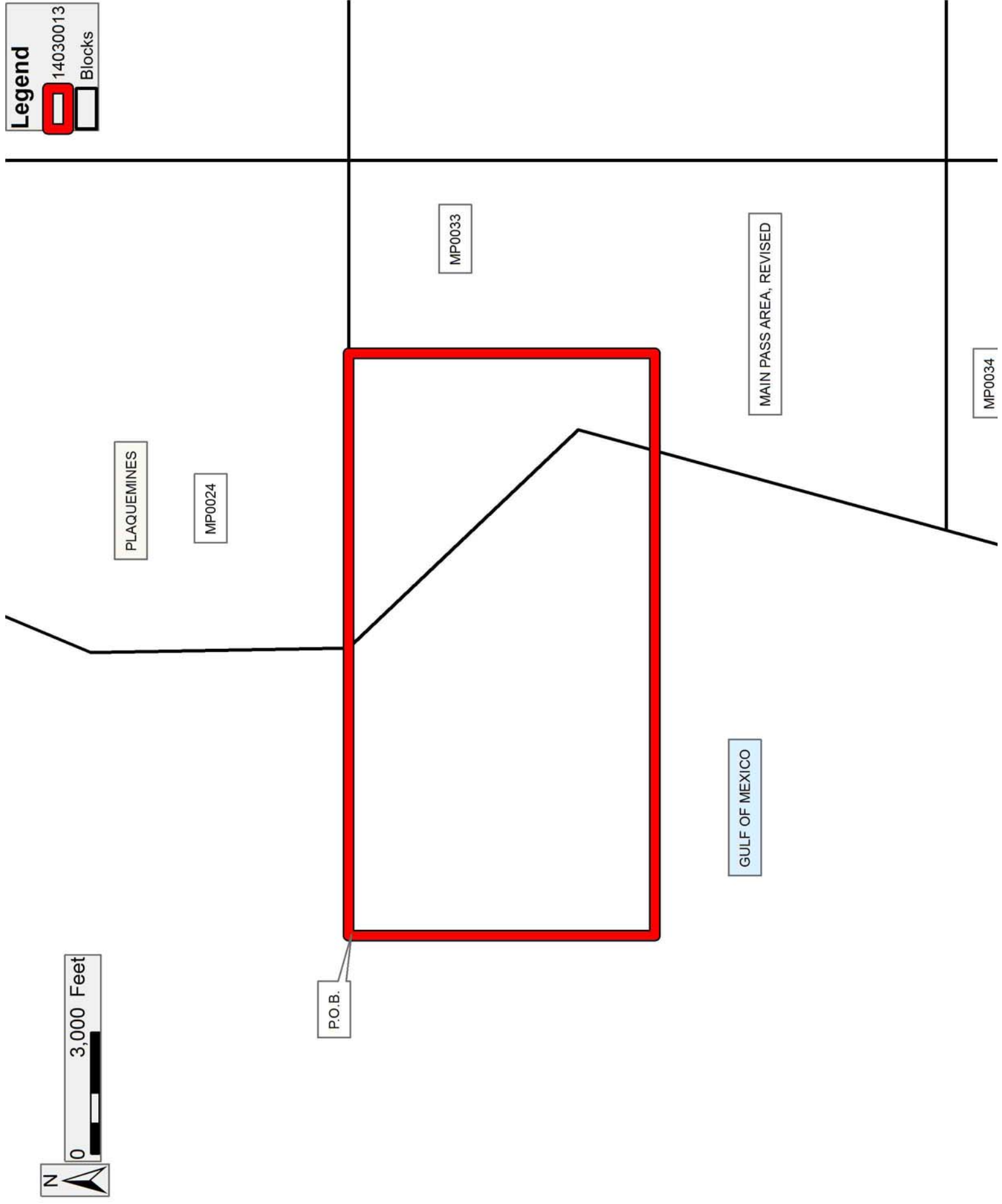
under this lease by the mineral lessee, its agents, successors or assigns, shall not interfere with nor hinder the reasonable surface use by the Department of Natural Resources, its Offices or Commissions, as herein above reserved.

NOTE: This tract is located in an area designated by the Louisiana Legislature or the Wildlife and Fisheries Commission as a Public Oyster Seed Ground, Reservation, or area of Calcasieu or Sabine Lake. Proposed projects occurring in these areas will be evaluated on a case by case basis by Louisiana Department of Wildlife & Fisheries. Modifications to proposed project features including, but not limited to, access routes, well sites, flowlines, and appurtenant structures maybe required by the Louisiana Department of Wildlife and Fisheries. In addition, compensatory mitigation will be required to offset unavoidable habitat impacts.

Applicant: ROBERT A. SCHROEDER, INC.

Bidder	Cash Payment	Price/Acre	Rental	Oil	Gas	Other

**Legend**  
14030013  
Blocks





**TRACT 43808 - Plaquemines Parish, Louisiana**

All of the lands now or formerly constituting the beds and bottoms of all water bodies of every nature and description as to which title is vested in the State of Louisiana, together with all islands arising therein and other lands formed by accretion or by reliction, where allowed by law, excepting tax adjudicated lands, and not presently under mineral lease on March 12, 2014, situated in Plaquemines Parish, Louisiana, and more particularly described as follows: Beginning at a point having Coordinates of X = 2,557,248.59 and Y = 302,012.52; thence East 15,000.00 feet to a point having Coordinates of X = 2,572,248.59 and Y = 302,012.52; thence South 7,627.03 feet to a point having Coordinates of X = 2,572,248.59 and Y = 294,385.49; thence West 15,000.00 feet to a point having Coordinates of X = 2,557,248.59 and Y = 294,385.49; thence North 7,627.03 feet to the Point of Beginning, containing approximately **2,372 acres**, all as more particularly outlined on a plat on file in the Office of Mineral Resources, Department of Natural Resources. All bearings, distances and coordinates are based on Louisiana Coordinate System of 1927, (North or South Zone), where applicable.

NOTE: The above description of the Tract nominated for lease has been provided and corrected, where required, exclusively by the nomination party. Any mineral lease selected from this Tract and awarded by the Louisiana State Mineral and Energy Board shall be without warranty of any kind, either express, implied, or statutory, including, but not limited to, the implied warranties of merchantability and fitness for a particular purpose. Should the mineral lease awarded by the Louisiana State Mineral and Energy Board be subsequently modified, cancelled or abrogated due to the existence of conflicting leases, operating agreements, private claims or other future obligations or conditions which may affect all or any portion of the leased Tract, it shall not relieve the Lessee of the obligation to pay any bonus due thereon to the Louisiana State Mineral and Energy Board, nor shall the Louisiana State Mineral and Energy Board be obligated to refund any consideration paid by the Lessor prior to such modification, cancellation, or abrogation, including, but not limited to, bonuses, rentals and royalties.

NOTE: The State of Louisiana does hereby reserve, and this lease shall be subject to, the imprescriptible right of surface use in the nature of a servitude in favor of the Department of Natural Resources, including its Offices and Commissions, for the sole purpose of implementing, constructing, servicing and maintaining approved coastal zone management and/or restoration projects. Utilization of any and all rights derived under this lease by the mineral lessee, its agents, successors or assigns, shall not interfere with nor hinder the reasonable surface use by the Department of Natural Resources, its Offices or Commissions, as herein above reserved.

NOTE: This tract is located in an area designated by the Louisiana Legislature or the Wildlife and Fisheries Commission as a Public Oyster

Seed Ground, Reservation, or area of Calcasieu or Sabine Lake. Proposed projects occurring in these areas will be evaluated on a case by case basis by Louisiana Department of Wildlife & Fisheries. Modifications to proposed project features including, but not limited to, access routes, well sites, flowlines, and appurtenant structures maybe required by the Louisiana Department of Wildlife and Fisheries. In addition, compensatory mitigation will be required to offset unavoidable habitat impacts.

Applicant: ROBERT A. SCHROEDER, INC.

Bidder	Cash Payment	Price/Acre	Rental	Oil	Gas	Other

Legend

14030018



GULF OF MEXICO

PLAQUEMINES

P.O.B.

T18S - R16E

4,000 Feet



**TRACT 43809 - Portion of Block 48, Breton Sound Area, Plaquemines Parish, Louisiana**

All of the lands now or formerly constituting the beds and bottoms of all water bodies of every nature and description as to which title is vested in the State of Louisiana, together with all islands arising therein and other lands formed by accretion or by reliction, where allowed by law, excepting tax adjudicated lands, and not presently under mineral lease on March 12, 2014, situated in Plaquemines Parish, Louisiana, and more particularly described as follows: Beginning at a point within Block 48, Breton Sound Area, having Coordinates of X = 2,648,867.71 and Y = 300,886.10; thence South 8,056.10 feet to a point on the South line of said Block 48 having Coordinates of X = 2,648,867.71 and Y = 292,830.00; thence West 13,517.71 along the South line of said Block 48 to a point being its Southwest corner having Coordinates of X = 2,635,350.00 and Y = 292,830.00; thence North 8,056.10 feet along the West line of said Block 48 to a point having Coordinates of X = 2,635,350.00 and Y = 300,886.10; thence East 13,517.71 feet to the point of beginning, containing **2,500 acres**, all as more particularly outlined on a plat on file in the Office of Mineral Resources, Department of Natural Resources. All bearings, distances and coordinates are based on Louisiana Coordinate System of 1927, (North or South Zone), where applicable.

NOTE: The above description of the Tract nominated for lease has been provided and corrected, where required, exclusively by the nomination party. Any mineral lease selected from this Tract and awarded by the Louisiana State Mineral and Energy Board shall be without warranty of any kind, either express, implied, or statutory, including, but not limited to, the implied warranties of merchantability and fitness for a particular purpose. Should the mineral lease awarded by the Louisiana State Mineral and Energy Board be subsequently modified, cancelled or abrogated due to the existence of conflicting leases, operating agreements, private claims or other future obligations or conditions which may affect all or any portion of the leased Tract, it shall not relieve the Lessee of the obligation to pay any bonus due thereon to the Louisiana State Mineral and Energy Board, nor shall the Louisiana State Mineral and Energy Board be obligated to refund any consideration paid by the Lessor prior to such modification, cancellation, or abrogation, including, but not limited to, bonuses, rentals and royalties.

NOTE: The State of Louisiana does hereby reserve, and this lease shall be subject to, the imprescriptible right of surface use in the nature of a servitude in favor of the Department of Natural Resources, including its Offices and Commissions, for the sole purpose of implementing, constructing, servicing and maintaining approved coastal zone management and/or restoration projects. Utilization of any and all rights derived under this lease by the mineral lessee, its agents, successors or assigns, shall not interfere with nor hinder the reasonable surface use by the Department of Natural Resources, its Offices or Commissions, as herein above reserved.

NOTE: This tract is located in an area designated by the Louisiana Legislature or the Wildlife and Fisheries Commission as a Public Oyster Seed Ground, Reservation, or area of Calcasieu or Sabine Lake. Proposed projects occurring in these areas will be evaluated on a case by case basis by Louisiana Department of Wildlife & Fisheries. Modifications to proposed project features including, but not limited to, access routes, well sites, flowlines, and appurtenant structures maybe required by the Louisiana Department of Wildlife and Fisheries. In addition, compensatory mitigation will be required to offset unavoidable habitat impacts.

Applicant: MITCHELL OIL & GAS, LLC

Bidder	Cash Payment	Price/Acre	Rental	Oil	Gas	Other

**Legend**

- 14030037
- Blocks
- Active\_Leases

