

TRACT 43810 - Plaquemines Parish, Louisiana

All of the lands now or formerly constituting the beds and bottoms of all water bodies of every nature and description as to which title is vested in the State of Louisiana, together with all islands arising therein and other lands formed by accretion or by reliction, where allowed by law, excepting tax adjudicated lands, and not presently under mineral lease on March 12, 2014, situated in Plaquemines Parish, Louisiana, and more particularly described as follows: Beginning at a point having Coordinates of X = 2,572,248.59 and Y = 292,385.49, said point being a Northwest corner of State Lease No. 195, as amended; thence North 7,627.03 feet to a point having Coordinates of X = 2,572,248.59 and Y = 300,012.52; thence East 14,468.85 feet to a point having Coordinates of X = 2,586,717.44 and Y = 300,012.52; thence South 7,391.74 feet to a point having Coordinates of X = 2,586,717.44 and Y = 292,620.78, said point being on said Northern boundary of said State of Louisiana State Lease No. 195, as amended; thence South 89 degrees 04 minutes 06 seconds West 14,470.76 feet on and along said Northern boundary of State Lease No. 195, as amended, to the point of beginning, containing approximately **2,494.31 acres**, all as more particularly outlined on a plat on file in the Office of Mineral Resources, Department of Natural Resources. All bearings, distances and coordinates are based on Louisiana Coordinate System of 1927, (North or South Zone), where applicable.

NOTE: The above description of the Tract nominated for lease has been provided and corrected, where required, exclusively by the nomination party. Any mineral lease selected from this Tract and awarded by the Louisiana State Mineral and Energy Board shall be without warranty of any kind, either express, implied, or statutory, including, but not limited to, the implied warranties of merchantability and fitness for a particular purpose. Should the mineral lease awarded by the Louisiana State Mineral and Energy Board be subsequently modified, cancelled or abrogated due to the existence of conflicting leases, operating agreements, private claims or other future obligations or conditions which may affect all or any portion of the leased Tract, it shall not relieve the Lessee of the obligation to pay any bonus due thereon to the Louisiana State Mineral and Energy Board, nor shall the Louisiana State Mineral and Energy Board be obligated to refund any consideration paid by the Lessor prior to such modification, cancellation, or abrogation, including, but not limited to, bonuses, rentals and royalties.

NOTE: The State of Louisiana does hereby reserve, and this lease shall be subject to, the imprescriptible right of surface use in the nature of a servitude in favor of the Department of Natural Resources, including its Offices and Commissions, for the sole purpose of implementing, constructing, servicing and maintaining approved coastal zone management and/or restoration projects. Utilization of any and all rights derived under this lease by the mineral lessee, its agents, successors or assigns, shall not interfere with nor hinder the reasonable surface use by the Department of Natural Resources, its Offices or Commissions, as herein above reserved.

NOTE: This tract is located in an area designated by the Louisiana Legislature or the Wildlife and Fisheries Commission as a Public Oyster Seed Ground, Reservation, or area of Calcasieu or Sabine Lake. Proposed projects occurring in these areas will be evaluated on a case by case basis by Louisiana Department of Wildlife & Fisheries. Modifications to proposed project features including, but not limited to, access routes, well sites, flowlines, and appurtenant structures maybe required by the Louisiana Department of Wildlife and Fisheries. In addition, compensatory mitigation will be required to offset unavoidable habitat impacts.

Applicant: ROBERT A. SCHROEDER, INC.

Bidder	Cash Payment	Price/Acre	Rental	Oil	Gas	Other



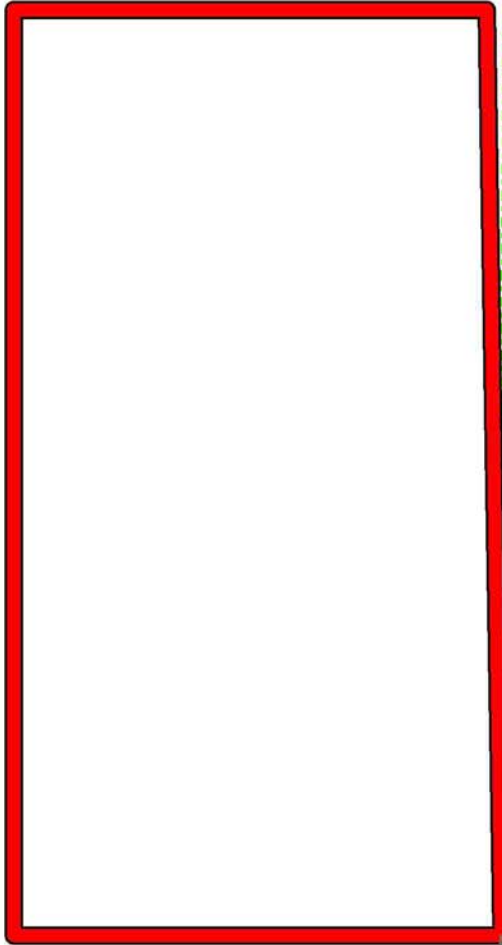
Legend

14030016

Active_Leases

PLAQUEMINES

GULF OF MEXICO



P.O.B.

SL 195

TRACT 43811 - Portion of Blocks 33, and 34, Main Pass Area, Revised, Plaquemines Parish, Louisiana

All of the lands now or formerly constituting the beds and bottoms of all water bodies of every nature and description as to which title is vested in the State of Louisiana, together with all islands arising therein and other lands formed by accretion or by reliction, where allowed by law, excepting tax adjudicated lands, and not presently under mineral lease on March 12, 2014, situated in Plaquemines Parish, Louisiana, and more particularly described as follows: Beginning at a point having Coordinates of X = 2,586,717.44 and Y = 300,012.52; thence East 11,972.54 feet to a point having Coordinates of X = 2,598,689.98 and Y = 300,012.52, said point being on the West line of Block 33, Main Pass Area, Revised; thence East 2,400.72 feet to a point having Coordinates of X = 2,601,090.70 and Y = 300,012.52; thence South 7,182.52 feet to a point having Coordinates of X = 2,601,090.70 and Y = 292,830.00, said point being on the South line of said Block 33, Main Pass Area, Revised; thence West 4,369.19 feet along said South line of said Block 33, Main Pass Area, Revised, to a point having Coordinates of X = 2,596,721.51 and Y = 292,830.00, said point being the Southwest corner of said Block 33, Main Pass Area, Revised, said point also being the Northwest corner of Block 34, Main Pass Area, Revised; thence South 15 degrees 19 minutes 35 seconds West approximately 48 feet along the West line of said Block 34, Main Pass Area, Revised, to a point being a northeast corner of State Lease No. 195, as amended; thence South 89 degrees 04 minutes 06 seconds West approximately 9,993 feet along a Northern boundary of said State Lease No. 195, as amended, to a point having a Coordinate of X = 2,586,717.44; thence North approximately 7,392 feet to the point of beginning, containing approximately **2,399 acres**, all as more particularly outlined on a plat on file in the Office of Mineral Resources, Department of Natural Resources. All bearings, distances and coordinates are based on Louisiana Coordinate System of 1927, (North or South Zone), where applicable.

NOTE: The above description of the Tract nominated for lease has been provided and corrected, where required, exclusively by the nomination party. Any mineral lease selected from this Tract and awarded by the Louisiana State Mineral and Energy Board shall be without warranty of any kind, either express, implied, or statutory, including, but not limited to, the implied warranties of merchantability and fitness for a particular purpose. Should the mineral lease awarded by the Louisiana State Mineral and Energy Board be subsequently modified, cancelled or abrogated due to the existence of conflicting leases, operating agreements, private claims or other future obligations or conditions which may affect all or any portion of the leased Tract, it shall not relieve the Lessee of the obligation to pay any bonus due thereon to the Louisiana State Mineral and Energy Board, nor shall the Louisiana State Mineral and Energy Board be obligated to refund any consideration paid by the Lessor prior to such modification, cancellation, or abrogation, including, but not limited to, bonuses, rentals and royalties.

NOTE: The State of Louisiana does hereby reserve, and this lease shall be subject to, the imprescriptible right of surface use in the nature of a servitude in favor of the Department of Natural Resources, including its Offices and Commissions, for the sole purpose of implementing, constructing, servicing and maintaining approved coastal zone management and/or restoration projects. Utilization of any and all rights derived under this lease by the mineral lessee, its agents, successors or assigns, shall not interfere with nor hinder the reasonable surface use by the Department of Natural Resources, its Offices or Commissions, as herein above reserved.

NOTE: This tract is located in an area designated by the Louisiana Legislature or the Wildlife and Fisheries Commission as a Public Oyster Seed Ground, Reservation, or area of Calcasieu or Sabine Lake. Proposed projects occurring in these areas will be evaluated on a case by case basis by Louisiana Department of Wildlife & Fisheries. Modifications to proposed project features including, but not limited to, access routes, well sites, flowlines, and appurtenant structures maybe required by the Louisiana Department of Wildlife and Fisheries. In addition, compensatory mitigation will be required to offset unavoidable habitat impacts.

Applicant: ROBERT A. SCHROEDER, INC.

Bidder	Cash Payment	Price/Acre	Rental	Oil	Gas	Other

1403001
Blocks

MP0032

MP0033

MAIN PASS AREA, REVISED

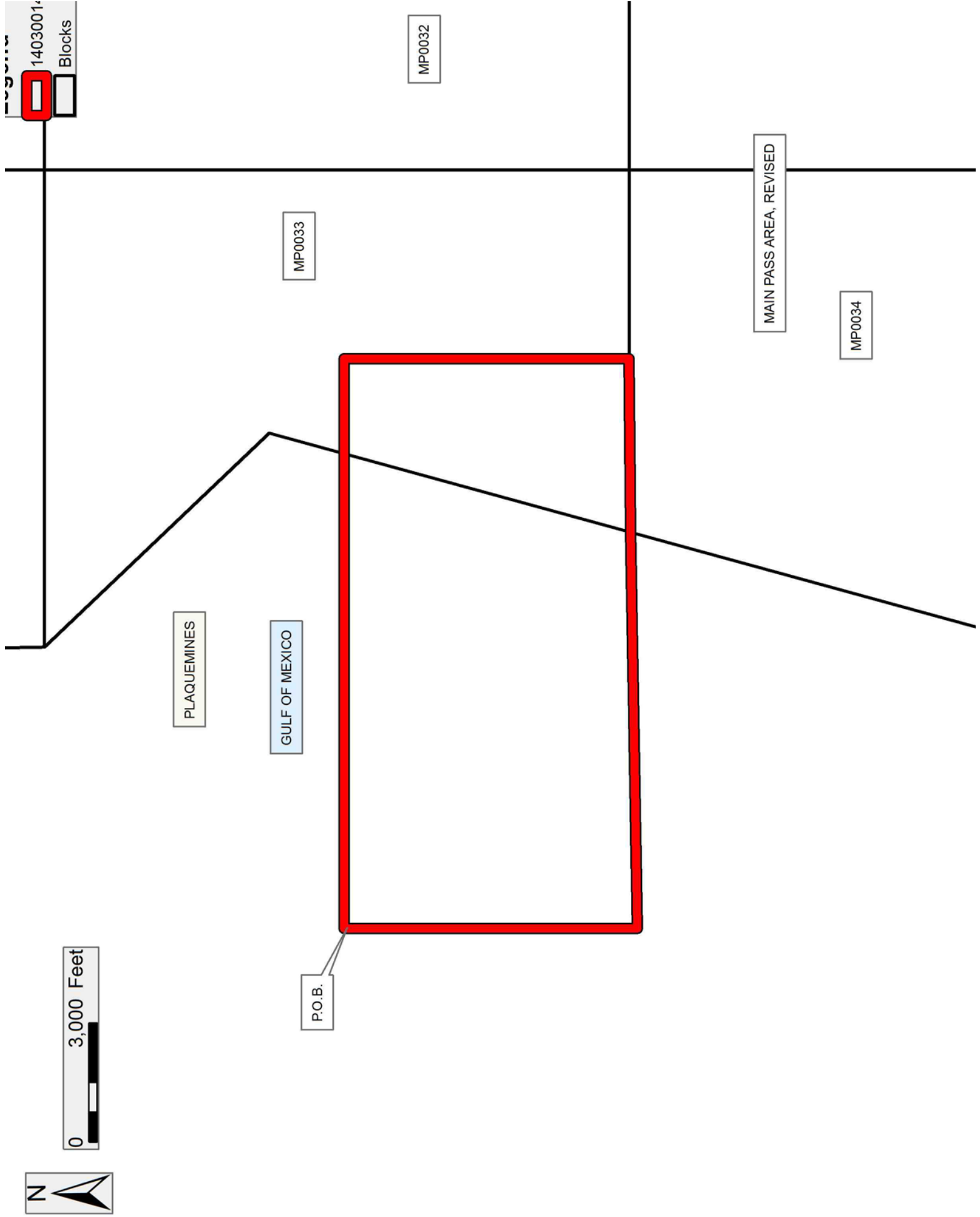
MP0034

PLAQUEMINES

GULF OF MEXICO

P.O.B.

0 3,000 Feet



TRACT 43812 - Plaquemines Parish, Louisiana

All of the lands now or formerly constituting the beds and bottoms of all water bodies of every nature and description as to which title is vested in the State of Louisiana, together with all islands arising therein and other lands formed by accretion or by reliction, where allowed by law, excepting tax adjudicated lands, and not presently under mineral lease on March 12, 2014, situated in Plaquemines Parish, Louisiana, and more particularly described as follows: Beginning at a point having Coordinates of X = 2,557,248.59 and Y = 294,385.49; thence East 15,000.00 feet to a point having Coordinates of X = 2,572,248.59 and Y = 294,385.49; thence Southerly approximately 2,000 feet to a point being a Northwest corner of State Lease No. 195, as amended; thence South 00 degrees 55 minutes 54 seconds East approximately 2,071 feet a Western boundary of said State Lease No. 195, as amended, to a point; thence Southerly approximately 3,429 feet to a point having Coordinates of X = 2,572,282.26 and Y = 286,885.49; thence West 15,033.67 feet to a point having Coordinates of X = 2,557,248.59 and Y = 286,885.49; thence North 7,500.00 feet to the point of beginning, **LESS AND EXCEPT** that portion of said State Lease No. 195, as amended, that may lie within the above described tract, containing approximately **1,370 acres**, all as more particularly outlined on a plat on file in the Office of Mineral Resources, Department of Natural Resources. All bearings, distances and coordinates are based on Louisiana Coordinate System of 1927, (North or South Zone), where applicable.

NOTE: The above description of the Tract nominated for lease has been provided and corrected, where required, exclusively by the nomination party. Any mineral lease selected from this Tract and awarded by the Louisiana State Mineral and Energy Board shall be without warranty of any kind, either express, implied, or statutory, including, but not limited to, the implied warranties of merchantability and fitness for a particular purpose. Should the mineral lease awarded by the Louisiana State Mineral and Energy Board be subsequently modified, cancelled or abrogated due to the existence of conflicting leases, operating agreements, private claims or other future obligations or conditions which may affect all or any portion of the leased Tract, it shall not relieve the Lessee of the obligation to pay any bonus due thereon to the Louisiana State Mineral and Energy Board, nor shall the Louisiana State Mineral and Energy Board be obligated to refund any consideration paid by the Lessor prior to such modification, cancellation, or abrogation, including, but not limited to, bonuses, rentals and royalties.

NOTE: The State of Louisiana does hereby reserve, and this lease shall be subject to, the imprescriptible right of surface use in the nature of a servitude in favor of the Department of Natural Resources, including its Offices and Commissions, for the sole purpose of implementing, constructing, servicing and maintaining approved coastal zone management and/or restoration projects. Utilization of any and all rights derived under this lease by the mineral lessee, its agents, successors or assigns, shall not interfere with nor hinder the reasonable surface use by the

Department of Natural Resources, its Offices or Commissions, as herein above reserved.

NOTE: This tract is located in an area designated by the Louisiana Legislature or the Wildlife and Fisheries Commission as a Public Oyster Seed Ground, Reservation, or area of Calcasieu or Sabine Lake. Proposed projects occurring in these areas will be evaluated on a case by case basis by Louisiana Department of Wildlife & Fisheries. Modifications to proposed project features including, but not limited to, access routes, well sites, flowlines, and appurtenant structures maybe required by the Louisiana Department of Wildlife and Fisheries. In addition, compensatory mitigation will be required to offset unavoidable habitat impacts.

Applicant: ROBERT A. SCHROEDER, INC.

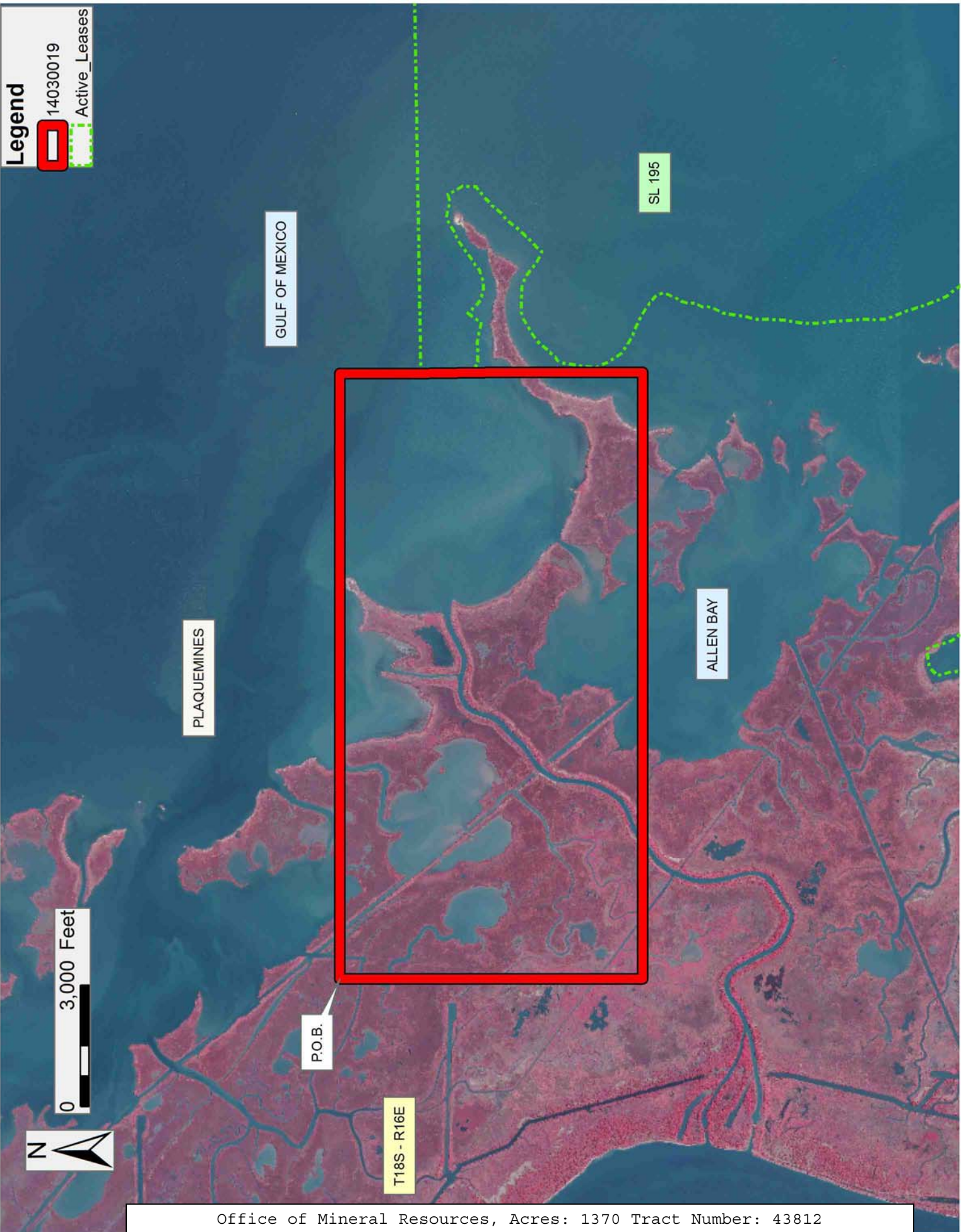
Bidder	Cash Payment	Price/Acre	Rental	Oil	Gas	Other

Legend

14030019



Active_Leases



0 3,000 Feet



TRACT 43813 - Plaquemines Parish, Louisiana

All of the lands now or formerly constituting the beds and bottoms of all water bodies of every nature and description as to which title is vested in the State of Louisiana, together with all islands arising therein and other lands formed by accretion or by reliction, where allowed by law, excepting tax adjudicated lands, and not presently under mineral lease on March 12, 2014, situated in Plaquemines Parish, Louisiana, and more particularly described as follows: Beginning at a point having Coordinates of X = 2,557,248.59 and Y = 286,885.49; thence East 15,033.67 feet to a point having Coordinates of X = 2,572,282.26 and Y = 286,885.49; thence South 7,500.00 feet to a point having Coordinates of X = 2,572,282.26 and Y = 279,385.49; thence West 15,033.67 feet to a point having Coordinates of X = 2,557,248.59 and Y = 279,385.49; thence North 7,500.00 feet the point of beginning, **LESS AND EXCEPT** that portion of State of Louisiana State Lease No. 195, as amended, that may lie within the above described tract, containing approximately **1,132 acres**, all as more particularly outlined on a plat on file in the Office of Mineral Resources, Department of Natural Resources. All bearings, distances and coordinates are based on Louisiana Coordinate System of 1927, (North or South Zone), where applicable.

NOTE: The above description of the Tract nominated for lease has been provided and corrected, where required, exclusively by the nomination party. Any mineral lease selected from this Tract and awarded by the Louisiana State Mineral and Energy Board shall be without warranty of any kind, either express, implied, or statutory, including, but not limited to, the implied warranties of merchantability and fitness for a particular purpose. Should the mineral lease awarded by the Louisiana State Mineral and Energy Board be subsequently modified, cancelled or abrogated due to the existence of conflicting leases, operating agreements, private claims or other future obligations or conditions which may affect all or any portion of the leased Tract, it shall not relieve the Lessee of the obligation to pay any bonus due thereon to the Louisiana State Mineral and Energy Board, nor shall the Louisiana State Mineral and Energy Board be obligated to refund any consideration paid by the Lessor prior to such modification, cancellation, or abrogation, including, but not limited to, bonuses, rentals and royalties.

NOTE: The State of Louisiana does hereby reserve, and this lease shall be subject to, the imprescriptible right of surface use in the nature of a servitude in favor of the Department of Natural Resources, including its Offices and Commissions, for the sole purpose of implementing, constructing, servicing and maintaining approved coastal zone management and/or restoration projects. Utilization of any and all rights derived under this lease by the mineral lessee, its agents, successors or assigns, shall not interfere with nor hinder the reasonable surface use by the Department of Natural Resources, its Offices or Commissions, as herein above reserved.

Applicant: ROBERT A. SCHROEDER, INC.

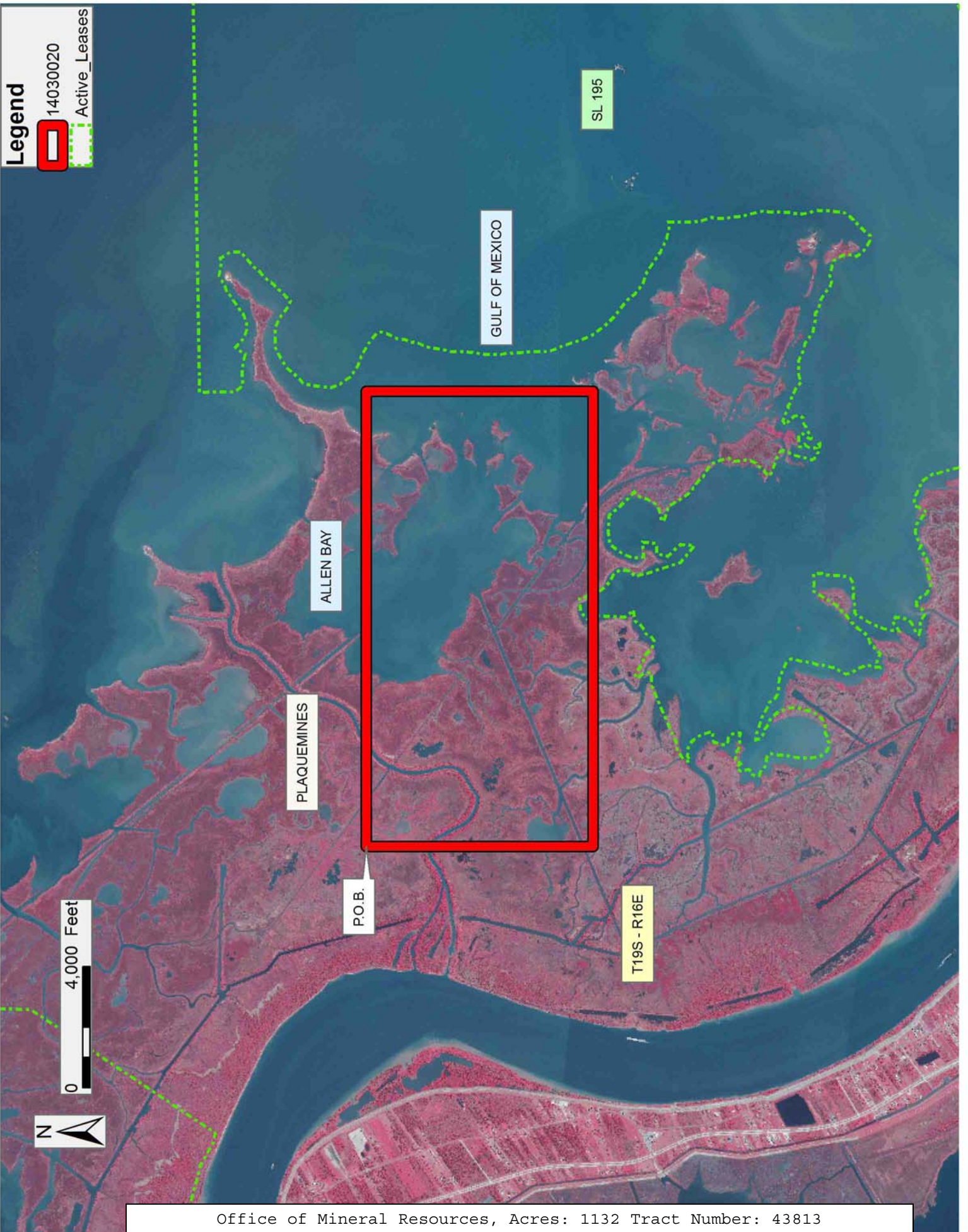
Bidder	Cash Payment	Price/Acre	Rental	Oil	Gas	Other

Legend

14030020



Active_Leases



SL 195

GULF OF MEXICO

ALLEN BAY

PLAQUEMINES

P.O.B.

T19S - R16E

0 4,000 Feet



TRACT 43814 - Lafourche Parish, Louisiana

All of the lands now or formerly constituting the beds and bottoms of all water bodies of every nature and description as to which title is vested in the State of Louisiana, together with all islands arising therein and other lands formed by accretion or by reliction, where allowed by law, excepting tax adjudicated lands, and not presently under mineral lease on March 12, 2014, situated in Lafourche Parish, Louisiana, and more particularly described as follows: Beginning at a point having Coordinates of X = 2,302,118.26 and Y = 264,909.79; thence North 5,205.80 feet to the Southwest corner of State Lease No. 20458, having Coordinates of X = 2,302,118.26 and Y = 270,115.59; thence along the boundary of said State Lease No. 20458 the following courses and distances: North 88 degrees 34 minutes 10 seconds East 8,109.63 feet to a point having Coordinates of X = 2,310,225.36 and Y = 270,318.04 and North 01 degrees 05 minutes 44 seconds West 5,325.37 feet to a point on the Western boundary of State Lease No. 19531 having Coordinates of X = 2,310,123.55 and Y = 275,642.44; thence along the Western boundary of said State Lease No. 19531 the following courses and distances: South 35 degrees 30 minutes 54 seconds East 3,164.94 feet to a point having Coordinates of X = 2,311,962.12 and Y = 273,066.30, South 27 degrees 28 minutes 53 seconds East 3,843.46 feet to a point having Coordinates of X = 2,313,735.72 and Y = 269,656.53, South 18 degrees 56 minutes 58 seconds East 2,469.66 feet to a point having Coordinates of X = 2,314,537.71 and Y = 267,320.71, and South 2,173.16 feet to its Southernmost Southwest corner, also being a point on the Northern boundary of State Lease No. 378, as amended, having Coordinates of X = 2,314,537.70 and Y = 265,147.55; thence South 88 degrees 34 minutes 36 seconds West approximately 9,572 feet along the Northern boundary of said State Lease No. 378 to its Westernmost Northwest corner; thence Westerly approximately 2,851 feet to the point of beginning, containing approximately **81 acres**, all as more particularly outlined on a plat on file in the Office of Mineral Resources, Department of Natural Resources. All bearings, distances and coordinates are based on Louisiana Coordinate System of 1927, (North or South Zone), where applicable.

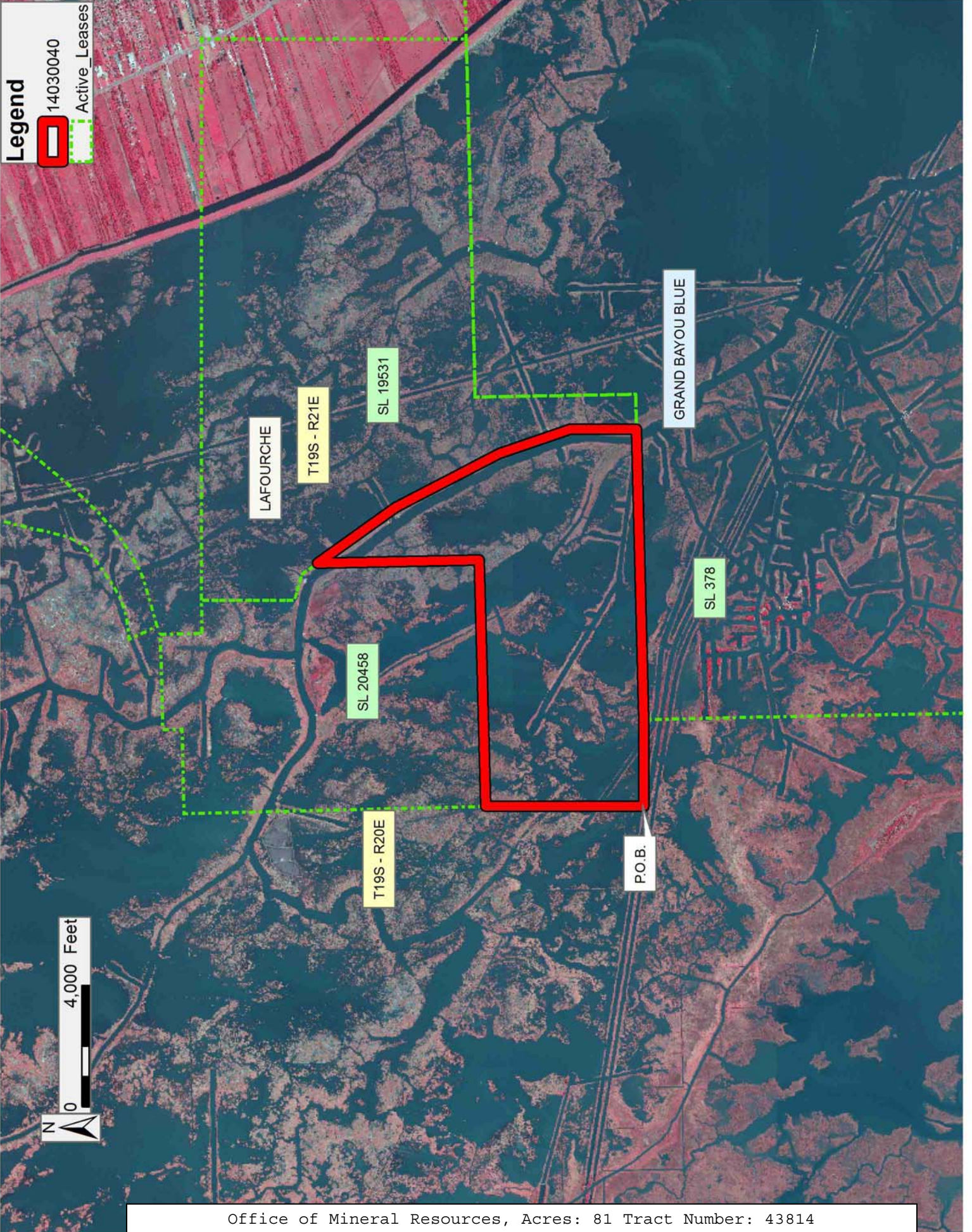
NOTE: The above description of the Tract nominated for lease has been provided and corrected, where required, exclusively by the nomination party. Any mineral lease selected from this Tract and awarded by the Louisiana State Mineral and Energy Board shall be without warranty of any kind, either express, implied, or statutory, including, but not limited to, the implied warranties of merchantability and fitness for a particular purpose. Should the mineral lease awarded by the Louisiana State Mineral and Energy Board be subsequently modified, cancelled or abrogated due to the existence of conflicting leases, operating agreements, private claims or other future obligations or conditions which may affect all or any portion of the leased Tract, it shall not relieve the Lessee of the obligation to pay any bonus due thereon to the Louisiana State Mineral and Energy Board, nor shall the Louisiana State Mineral and Energy Board be obligated to refund any consideration paid by the Lessor prior to such

modification, cancellation, or abrogation, including, but not limited to, bonuses, rentals and royalties.

NOTE: The State of Louisiana does hereby reserve, and this lease shall be subject to, the imprescriptible right of surface use in the nature of a servitude in favor of the Department of Natural Resources, including its Offices and Commissions, for the sole purpose of implementing, constructing, servicing and maintaining approved coastal zone management and/or restoration projects. Utilization of any and all rights derived under this lease by the mineral lessee, its agents, successors or assigns, shall not interfere with nor hinder the reasonable surface use by the Department of Natural Resources, its Offices or Commissions, as herein above reserved.

Applicant: THEOPHILUS OIL, GAS & LAND SERVICES, LLC

Bidder	Cash Payment	Price/Acre	Rental	Oil	Gas	Other



TRACT 43815 - Plaquemines Parish, Louisiana

All of the lands now or formerly constituting the beds and bottoms of all water bodies of every nature and description as to which title is vested in the State of Louisiana, together with all islands arising therein and other lands formed by accretion or by reliction, where allowed by law, excepting tax adjudicated lands, and not presently under mineral lease on March 12, 2014, situated in Plaquemines Parish, Louisiana, and more particularly described as follows: Beginning at a point having Coordinates of X = 2,574,821.00 and Y = 248,160.00; thence South 5,382.25 feet to a point on the boundary of State Lease No. 18475, as amended having Coordinates of X = 2,574,821.00 and Y = 242,777.75; thence along the boundary of said State Lease No. 18475 the following courses: South 80 degrees 50 minutes 15 seconds West 140.03 feet, North 08 degrees 15 minutes 55 seconds East 154.14 feet, South 76 degrees 09 minutes 55 seconds West 690.02 feet and South 72 degrees 32 minutes 54 seconds West 150.03 feet to a point having Coordinates of X = 2,573,891.79 and Y = 242,698.00; thence West approximately 4,082 feet to a point on the boundary of State Lease No. 192, as amended, having a Coordinate of Y = 242,698.00; thence Northerly, Easterly, Northwesterly and Northeasterly along the boundary of said State Lease No. 192 to a point of intersection from a line having a bearing of North 54 degrees 00 minutes 50 seconds West; thence South 54 degrees 00 minutes 50 seconds East approximately 1,373 feet to a point having Coordinates of X = 2,572,529.97 and Y = 247,295.42 and North 31 degrees 09 minutes 28 seconds East 1,010.32 feet to a point having Coordinates of X = 2,573,052.71 and Y = 248,160.00; thence East 1,768.29 feet to the point of beginning, **LESS AND EXCEPT** any portion of said State Lease No. 192 that may lie within the above described tract, containing approximately **498 acres**, all as more particularly outlined on a plat on file in the Office of Mineral Resources, Department of Natural Resources. All bearings, distances and coordinates are based on Louisiana Coordinate System of 1927, (North or South Zone), where applicable.

NOTE: The above description of the Tract nominated for lease has been provided and corrected, where required, exclusively by the nomination party. Any mineral lease selected from this Tract and awarded by the Louisiana State Mineral and Energy Board shall be without warranty of any kind, either express, implied, or statutory, including, but not limited to, the implied warranties of merchantability and fitness for a particular purpose. Should the mineral lease awarded by the Louisiana State Mineral and Energy Board be subsequently modified, cancelled or abrogated due to the existence of conflicting leases, operating agreements, private claims or other future obligations or conditions which may affect all or any portion of the leased Tract, it shall not relieve the Lessee of the obligation to pay any bonus due thereon to the Louisiana State Mineral and Energy Board, nor shall the Louisiana State Mineral and Energy Board be obligated to refund any consideration paid by the Lessor prior to such modification, cancellation, or abrogation, including, but not limited to, bonuses, rentals and royalties.

NOTE: The State of Louisiana does hereby reserve, and this lease shall be subject to, the imprescriptible right of surface use in the nature of a servitude in favor of the Department of Natural Resources, including its Offices and Commissions, for the sole purpose of implementing, constructing, servicing and maintaining approved coastal zone management and/or restoration projects. Utilization of any and all rights derived under this lease by the mineral lessee, its agents, successors or assigns, shall not interfere with nor hinder the reasonable surface use by the Department of Natural Resources, its Offices or Commissions, as herein above reserved.

Applicant: ALLEN & KIRMSE, LTD.

Bidder	Cash Payment	Price/Acre	Rental	Oil	Gas	Other

Legend
14030008
Active_Leases



TRACT 43816 - Plaquemines Parish, Louisiana

All of the lands now or formerly constituting the beds and bottoms of all water bodies of every nature and description as to which title is vested in the State of Louisiana, together with all islands arising therein and other lands formed by accretion or by reliction, where allowed by law, excepting tax adjudicated lands, and not presently under mineral lease on March 12, 2014, situated in Plaquemines Parish, Louisiana, and more particularly described as follows: Beginning at a point having Coordinates of X = 2,574,821.00 and Y = 248,160.00; thence Southeasterly approximately 690 feet to a point of intersection with a Judgment, Agreement or Compromise, Title ID 1013, 1013.1; thence along the boundary of said Judgment, Agreement or Compromise, the following: Southwesterly approximately 1,017 feet and Southeasterly approximately 5,375 feet to a point; thence South approximately 1,076 feet to a point on the boundary of State Lease No. 3279, as amended; thence Westerly, Northwesterly, Southeasterly, Westerly and Southeasterly along the boundary of said State Lease No. 3279 to the point of intersection with an East West line having a Coordinate of Y = 242,347.08; thence West approximately 3,387 feet to a point on the boundary of State Lease No. 18475, as amended having Coordinates of X = 2,575,661.62 and Y = 242,347.08; thence along the boundary of said State Lease No. 18475 the following courses: North 11 degrees 47 minutes 49 seconds East 624.22 feet to a point, North 01 degrees 40 minutes 01 seconds West 73.86 feet to a point, South 72 degrees 11 minutes 17 seconds West 532.70 feet to a point, South 66 degrees 29 minutes 08 seconds West 294.78 feet to a point, North 10 degrees 54 minutes 28 seconds East 59.69 feet and South 80 degrees 50 minutes 15 seconds West 202.50 feet to a point having Coordinates of X = 2,574,821.00 and Y = 242,777.75; thence North 5,382.25 feet to the point of beginning, **LESS AND EXCEPT** any privately owned land located in Sections 21, 22, 23, 24, 25, 26, 27, and 28, Township 20 South, Range 29 East, Plaquemines Parish, Louisiana that may fall within the above described tract, and **LESS AND EXCEPT** any portion of said State Lease No. 3279 that may lie within the above described tract, containing approximately **274 acres**, all as more particularly outlined on a plat on file in the Office of Mineral Resources, Department of Natural Resources. All bearings, distances and coordinates are based on Louisiana Coordinate System of 1927, (North or South Zone), where applicable.

NOTE: The above description of the Tract nominated for lease has been provided and corrected, where required, exclusively by the nomination party. Any mineral lease selected from this Tract and awarded by the Louisiana State Mineral and Energy Board shall be without warranty of any kind, either express, implied, or statutory, including, but not limited to, the implied warranties of merchantability and fitness for a particular purpose. Should the mineral lease awarded by the Louisiana State Mineral and Energy Board be subsequently modified, cancelled or abrogated due to the existence of conflicting leases, operating agreements, private claims or other future obligations or conditions which may affect all or any portion of the leased Tract, it shall not relieve the Lessee of the

obligation to pay any bonus due thereon to the Louisiana State Mineral and Energy Board, nor shall the Louisiana State Mineral and Energy Board be obligated to refund any consideration paid by the Lessor prior to such modification, cancellation, or abrogation, including, but not limited to, bonuses, rentals and royalties.

NOTE: The State of Louisiana does hereby reserve, and this lease shall be subject to, the imprescriptible right of surface use in the nature of a servitude in favor of the Department of Natural Resources, including its Offices and Commissions, for the sole purpose of implementing, constructing, servicing and maintaining approved coastal zone management and/or restoration projects. Utilization of any and all rights derived under this lease by the mineral lessee, its agents, successors or assigns, shall not interfere with nor hinder the reasonable surface use by the Department of Natural Resources, its Offices or Commissions, as herein above reserved.

Applicant: ALLEN & KIRMSE, LTD.

Bidder	Cash Payment	Price/Acre	Rental	Oil	Gas	Other

Legend

14030009



Active_Leases



0 2,000 Feet



TRACT 43817 - Plaquemines Parish, Louisiana

All of the lands now or formerly constituting the beds and bottoms of all water bodies of every nature and description as to which title is vested in the State of Louisiana, together with all islands arising therein and other lands formed by accretion or by reliction, where allowed by law, excepting tax adjudicated lands, and not presently under mineral lease on March 12, 2014, situated in Plaquemines Parish, Louisiana, and more particularly described as follows: Beginning at a point having Coordinates of X = 2,585,163.00 and Y = 242,860.00; thence South 5,171.00 feet to a point having Coordinates of X = 2,585,163.00 and Y = 237,689.00; thence West approximately 3,337 feet to a point on the boundary of State Lease No. 3279, as amended having a Coordinate of Y = 237,689.00; thence Northwesterly and Southwesterly along the boundary of said State Lease No. 3279 to the point of intersection with an East-West line having a Coordinate of Y = 237,689.00; thence West approximately 767 feet to a point on the boundary of said State Lease No. 3279 having a Coordinate of Y = 237,689.00; thence Northerly and Northwesterly along the boundary of said State Lease No. 3279 to a point; thence North approximately 1,076 feet to a point of intersection with a Judgment, Agreement or Compromise, Title ID 1013, 1013.1; thence along the boundary of said Judgment, Agreement or Compromise, the following: Southeasterly approximately 2,695 feet and Northeasterly approximately 473 feet to a point; thence South 65 degrees 21 minutes 02 seconds East approximately 3,019 to the point of beginning, **LESS AND EXCEPT** any privately owned land located in Sections 21, 22, 23, 24, 25, 26, 27, and 28, Township 20 South, Range 29 East, Plaquemines Parish, Louisiana that may fall within the above described tract, and **LESS AND EXCEPT** any portion of said State Lease No. 3279 that may lie within the above described tract, the above nominated tract containing approximately **518 acres**, all as more particularly outlined on a plat on file in the Office of Mineral Resources, Department of Natural Resources. All bearings, distances and coordinates are based on Louisiana Coordinate System of 1927, (North or South Zone), where applicable.

NOTE: The above description of the Tract nominated for lease has been provided and corrected, where required, exclusively by the nomination party. Any mineral lease selected from this Tract and awarded by the Louisiana State Mineral and Energy Board shall be without warranty of any kind, either express, implied, or statutory, including, but not limited to, the implied warranties of merchantability and fitness for a particular purpose. Should the mineral lease awarded by the Louisiana State Mineral and Energy Board be subsequently modified, cancelled or abrogated due to the existence of conflicting leases, operating agreements, private claims or other future obligations or conditions which may affect all or any portion of the leased Tract, it shall not relieve the Lessee of the obligation to pay any bonus due thereon to the Louisiana State Mineral and Energy Board, nor shall the Louisiana State Mineral and Energy Board be obligated to refund any consideration paid by the Lessor prior to such modification, cancellation, or abrogation, including, but not limited to, bonuses, rentals and royalties.

NOTE: The State of Louisiana does hereby reserve, and this lease shall be subject to, the imprescriptible right of surface use in the nature of a servitude in favor of the Department of Natural Resources, including its Offices and Commissions, for the sole purpose of implementing, constructing, servicing and maintaining approved coastal zone management and/or restoration projects. Utilization of any and all rights derived under this lease by the mineral lessee, its agents, successors or assigns, shall not interfere with nor hinder the reasonable surface use by the Department of Natural Resources, its Offices or Commissions, as herein above reserved.

Applicant: ALLEN & KIRMSE, LTD.

Bidder	Cash Payment	Price/Acre	Rental	Oil	Gas	Other

Legend
14030011
Active_Leases



PLAQUEMINES

BAY POMME D'OR

P.O.B.

T20S - R29E



SL 3279

SL 3279



TRACT 43818 - Plaquemines Parish, Louisiana

All of the lands now or formerly constituting the beds and bottoms of all water bodies of every nature and description as to which title is vested in the State of Louisiana, together with all islands arising therein and other lands formed by accretion or by reliction, where allowed by law, excepting tax adjudicated lands, and not presently under mineral lease on March 12, 2014, situated in Plaquemines Parish, Louisiana, and more particularly described as follows: Beginning at a point having Coordinates of X = 2,574,821.00 and Y = 237,689.00; thence North 3,009.71 feet to a point on the boundary of State Lease No. 18475, as amended having Coordinates of X = 2,574,821.00 and Y = 240,698.71; thence along the boundary of said State Lease No. 18475 the following courses: North 72 degrees 14 minutes 52 seconds East 558.51 feet and North 11 degrees 47 minutes 49 seconds East 1,509.98 feet to a point having Coordinates of X = 2,575,661.62 and Y = 242,347.08; thence East approximately 3,387 feet to a point on the boundary of State Lease No. 3279, as amended having a Coordinate of Y = 242,347.08; thence Southeasterly along the boundary of said State Lease No. 3279 to the point of intersection with an East-West line having a Coordinate of Y = 237,689.00; thence West approximately 1,616 feet to a point on the boundary of said State Lease No. 3279 having a Coordinate of Y = 237,689.00; thence Northwesterly, Southwesterly and Southeasterly along the boundary of said State Lease No. 3279 to the point of intersection with an East West line having a Coordinate of Y = 237,689.00; thence West approximately 1,542 feet to a point on the boundary of said State Lease No. 3279 having a Coordinate of Y = 237,689.00; thence Northwesterly, Westerly, Southeasterly and Southwesterly along the boundary of said State Lease No. 3279 to the point of intersection with an East-West line having a Coordinate of Y = 237,689.00; thence West approximately 1,050 feet to the point of beginning, **LESS AND EXCEPT** any portion of said State Lease No. 3279 that may lie within the above described tract, the above nominated tract containing approximately **312 acres**, all as more particularly outlined on a plat on file in the Office of Mineral Resources, Department of Natural Resources. All bearings, distances and coordinates are based on Louisiana Coordinate System of 1927, (North or South Zone), where applicable.

NOTE: The above description of the Tract nominated for lease has been provided and corrected, where required, exclusively by the nomination party. Any mineral lease selected from this Tract and awarded by the Louisiana State Mineral and Energy Board shall be without warranty of any kind, either express, implied, or statutory, including, but not limited to, the implied warranties of merchantability and fitness for a particular purpose. Should the mineral lease awarded by the Louisiana State Mineral and Energy Board be subsequently modified, cancelled or abrogated due to the existence of conflicting leases, operating agreements, private claims or other future obligations or conditions which may affect all or any portion of the leased Tract, it shall not relieve the Lessee of the obligation to pay any bonus due thereon to the Louisiana State Mineral and Energy Board, nor shall the Louisiana State Mineral and Energy Board be

obligated to refund any consideration paid by the Lessor prior to such modification, cancellation, or abrogation, including, but not limited to, bonuses, rentals and royalties.

NOTE: The State of Louisiana does hereby reserve, and this lease shall be subject to, the imprescriptible right of surface use in the nature of a servitude in favor of the Department of Natural Resources, including its Offices and Commissions, for the sole purpose of implementing, constructing, servicing and maintaining approved coastal zone management and/or restoration projects. Utilization of any and all rights derived under this lease by the mineral lessee, its agents, successors or assigns, shall not interfere with nor hinder the reasonable surface use by the Department of Natural Resources, its Offices or Commissions, as herein above reserved.

Applicant: ALLEN & KIRMSE, LTD.

Bidder	Cash Payment	Price/Acre	Rental	Oil	Gas	Other

Legend

14030010

Active_Leases



0 2,000 Feet



T20S - R29E

PLAQUEMINES

BAY POMME D'OR

SL 18475

SL 3279

SL 3279

P.O.B.

SL 3279

TRACT 43819 - Portion of Block 113, South Timbalier Area, Revised, Terrebonne Parish, Louisiana

All of the lands now or formerly constituting the beds and bottoms of all water bodies of every nature and description as to which title is vested in the State of Louisiana, together with all islands arising therein and other lands formed by accretion or by reliction, where allowed by law, excepting tax adjudicated lands, and not presently under mineral lease on March 12, 2014, situated in Terrebonne Parish, Louisiana, and more particularly described as follows: Beginning at a point having Coordinates of X = 2,225,629.46 and Y = 189,081.28, said point being a Northeast corner of State Lease No. 199, as amended; thence along the Northern and Eastern boundaries of said State Lease No. 199, as amended, the following courses: South 89 degrees 39 minutes 55 seconds West 5,280.00 feet to a point having Coordinates of X = 2,220,349.55 and Y = 189,050.43; and North 00 degrees 20 minutes 05 seconds West 5,280.00 feet to a point having Coordinates of X = 2,220,318.70 and Y = 194,330.34; thence North 89 degrees 39 minutes 55 seconds East 10,419.87 feet to a point having Coordinates of X = 2,230,738.39 and Y = 194,391.22; thence South 00 degrees 20 minutes 05 seconds East 5,280.00 feet to a point having Coordinates of X = 2,230,769.23 and Y = 189,111.31; thence South 89 degrees 39 minutes 55 seconds West 5,139.86 feet to the point of beginning, containing approximately **1,223 acres**, all as more particularly outlined on a plat on file in the Office of Mineral Resources, Department of Natural Resources. All bearings, distances and coordinates are based on Louisiana Coordinate System of 1927, (North or South Zone), where applicable.

NOTE: The above description of the Tract nominated for lease has been provided and corrected, where required, exclusively by the nomination party. Any mineral lease selected from this Tract and awarded by the Louisiana State Mineral and Energy Board shall be without warranty of any kind, either express, implied, or statutory, including, but not limited to, the implied warranties of merchantability and fitness for a particular purpose. Should the mineral lease awarded by the Louisiana State Mineral and Energy Board be subsequently modified, cancelled or abrogated due to the existence of conflicting leases, operating agreements, private claims or other future obligations or conditions which may affect all or any portion of the leased Tract, it shall not relieve the Lessee of the obligation to pay any bonus due thereon to the Louisiana State Mineral and Energy Board, nor shall the Louisiana State Mineral and Energy Board be obligated to refund any consideration paid by the Lessor prior to such modification, cancellation, or abrogation, including, but not limited to, bonuses, rentals and royalties.

NOTE: The State of Louisiana does hereby reserve, and this lease shall be subject to, the imprescriptible right of surface use in the nature of a servitude in favor of the Department of Natural Resources, including its Offices and Commissions, for the sole purpose of implementing, constructing, servicing and maintaining approved coastal zone management

and/or restoration projects. Utilization of any and all rights derived under this lease by the mineral lessee, its agents, successors or assigns, shall not interfere with nor hinder the reasonable surface use by the Department of Natural Resources, its Offices or Commissions, as herein above reserved.

NOTE: It appears, according to our records, that a portion of this Tract is located within the restrictive safety fairway area as set out by the Corps of Engineers, U.S. Army and/or the restrictive anchorage area as set out by the U.S. Coast Guard.

Applicant: ROBERT A. SCHROEDER, INC.

Bidder	Cash Payment	Price/Acre	Rental	Oil	Gas	Other

Legend

14030006

Blocks

Active_Leases



ST0114

BAY SAINTE ELAINE

SOUTH TIMBALIER AREA, REVISED

ST0113

TERREBONNE

P.O.B.



0 2,000 Feet

SL 199

T22S - R18E