

TRACT 43820 - Portion of Blocks 113, 114, and 118, South Timbalier Area, Revised, Terrebonne Parish, Louisiana

All of the lands now or formerly constituting the beds and bottoms of all water bodies of every nature and description as to which title is vested in the State of Louisiana, together with all islands arising therein and other lands formed by accretion or by reliction, where allowed by law, excepting tax adjudicated lands, and not presently under mineral lease on March 12, 2014, situated in Terrebonne Parish, Louisiana, and more particularly described as follows: Beginning at a point having Coordinates of X = 2,225,629.46 and Y = 189,081.28, said point being a Northeast corner of State Lease No. 199, as amended; thence North 89 degrees 39 minutes 55 seconds East 5,139.86 feet to a point having Coordinates of X = 2,230,769.23 and Y = 189,111.31; thence South 00 degrees 20 minutes 05 seconds East 10,445.25 feet to a point having Coordinates of X = 2,230,830.25 and Y = 178,666.24; thence South 89 degrees 39 minutes 55 seconds West 5,139.86 feet to a point having Coordinates of X = 2,225,690.48 and Y = 178,636.21, said point being the Northeast corner of State Lease No. 18167, as amended; thence South 88 degrees 47 minutes 51 seconds West 3,857.34 feet along the Northern boundary of said State Lease No. 18167, as amended, to a point having Coordinates of X = 2,221,833.99 and Y = 178,555.26, said point being the Northernmost Northwest corner of said State Lease No. 18167, as amended, said point also being on the Eastern boundary of said State Lease No. 199, as amended; thence along said Eastern boundary of said State Lease No. 199, as amended, the following courses: North 36 degrees 39 minutes 55 seconds East 735.18 feet to a point having Coordinates of X = 2,222,272.99 and Y = 179,144.98; North 02 degrees 20 minutes 05 seconds West 395.00 feet to a point having Coordinates of X = 2,222,256.90 and Y = 179,539.65; North 00 degrees 20 minutes 05 seconds West 1,950.00 feet to a point having Coordinates of X = 2,222,245.51 and Y = 181,489.61; North 17 degrees 19 minutes 55 seconds East 871.00 feet to a point having Coordinates of X = 2,222,504.99 and Y = 182,321.07; North 57 degrees 41 minutes 55 seconds East 2,761.19 feet to a point having Coordinates of X = 2,224,838.88 and Y = 183,796.57; North 89 degrees 39 minutes 54 seconds East 246.23 feet to a point having Coordinates of X = 2,225,085.10 and Y = 183,798.01; North 57 degrees 41 minutes 55 seconds East 678.03 feet to a point having Coordinates of X = 2,225,658.20 and Y = 184,160.33; and North 00 degrees 20 minutes 05 seconds West 4,921.03 feet to the point of beginning, containing approximately **1,595.42 acres**, all as more particularly outlined on a plat on file in the Office of Mineral Resources, Department of Natural Resources. All bearings, distances and coordinates are based on Louisiana Coordinate System of 1927, (North or South Zone), where applicable.

NOTE: The above description of the Tract nominated for lease has been provided and corrected, where required, exclusively by the nomination party. Any mineral lease selected from this Tract and awarded by the Louisiana State Mineral and Energy Board shall be without warranty of any kind, either express, implied, or statutory, including, but not limited to, the implied warranties of merchantability and fitness for a particular

purpose. Should the mineral lease awarded by the Louisiana State Mineral and Energy Board be subsequently modified, cancelled or abrogated due to the existence of conflicting leases, operating agreements, private claims or other future obligations or conditions which may affect all or any portion of the leased Tract, it shall not relieve the Lessee of the obligation to pay any bonus due thereon to the Louisiana State Mineral and Energy Board, nor shall the Louisiana State Mineral and Energy Board be obligated to refund any consideration paid by the Lessor prior to such modification, cancellation, or abrogation, including, but not limited to, bonuses, rentals and royalties.

NOTE: The State of Louisiana does hereby reserve, and this lease shall be subject to, the imprescriptible right of surface use in the nature of a servitude in favor of the Department of Natural Resources, including its Offices and Commissions, for the sole purpose of implementing, constructing, servicing and maintaining approved coastal zone management and/or restoration projects. Utilization of any and all rights derived under this lease by the mineral lessee, its agents, successors or assigns, shall not interfere with nor hinder the reasonable surface use by the Department of Natural Resources, its Offices or Commissions, as herein above reserved.

NOTE: It appears, according to our records, that a portion of this Tract is located within the restrictive safety fairway area as set out by the Corps of Engineers, U.S. Army and/or the restrictive anchorage area as set out by the U.S. Coast Guard.

Applicant: ROBERT A. SCHROEDER, INC.

Bidder	Cash Payment	Price/Acre	Rental	Oil	Gas	Other

Legend

14030004

Blocks

Active_Leases



TERREBONNE

ST0113

P.O.B.

ST0114

BAY SAINTE ELAINE

SOUTH TIMBALIER AREA, REVISED

ST0118

SL 18167

SL 199



0 3,000 Feet

TRACT 43821 - Portion of Blocks 113, 118, and 119, South Timbalier Area, Revised, Terrebonne Parish, Louisiana

All of the lands now or formerly constituting the beds and bottoms of all water bodies of every nature and description as to which title is vested in the State of Louisiana, together with all islands arising therein and other lands formed by accretion or by reliction, where allowed by law, excepting tax adjudicated lands, and not presently under mineral lease on March 12, 2014, situated in Terrebonne Parish, Louisiana, and more particularly described as follows: Beginning at a point having Coordinates of X = 2,225,721.33 and Y = 173,354.19, said point being the Southeast corner of State Lease No. 18167, as amended; thence North 00 degrees 20 minutes 05 seconds West 5,282.11 feet along the Eastern boundary of said State Lease No. 18167, as amended, to a point having Coordinates of X = 2,225,690.48 and Y = 178,636.21; thence North 89 degrees 39 minutes 55 seconds East 5,139.86 feet to a point having Coordinates of X = 2,230,830.24 and Y = 178,666.24; thence South 00 degrees 20 minutes 05 seconds East 14,099.58 feet to a point having Coordinates of X = 2,230,912.61 and Y = 164,566.90; thence West 2,907.55 feet to a point having Coordinates of X = 2,228,005.06 and Y = 164,566.90, said point being the Southernmost corner of State Lease No. 21109; thence along the Eastern and Northern boundaries of said State Lease No. 21109 the following courses: North 00 degrees 00 minutes 02 seconds West 5,696.08 feet to a point having Coordinates of X = 2,228,005.00 and Y = 170,262.98; North 37 degrees 28 minutes 10 seconds West 3,752.87 feet to a point having Coordinates of X = 2,225,721.99 and Y = 173,241.55; and South 89 degrees 39 minutes 55 seconds West 4,531.24 feet to a point having Coordinates of X = 2,221,190.83 and Y = 173,215.08, said point being the Northwest corner of said State Lease No. 21109; thence South 89 degrees 38 minutes 43 seconds West 2,973.88 feet to a point having Coordinates of X = 2,218,217.01 and Y = 173,196.67, said point being on the Southern boundary of said State Lease No. 18167, as amended; thence along the Southern boundary of said State Lease No. 18167, as amended, the following courses: North 88 degrees 47 minutes 51 seconds East 2,459.22 feet to a point having Coordinates of X = 2,220,675.69 and Y = 173,248.28; and North 88 degrees 47 minutes 51 seconds East 5,046.75 feet to the point of beginning, containing approximately **1,300 acres**, all as more particularly outlined on a plat on file in the Office of Mineral Resources, Department of Natural Resources. All bearings, distances and coordinates are based on Louisiana Coordinate System of 1927, (North or South Zone), where applicable.

NOTE: The above description of the Tract nominated for lease has been provided and corrected, where required, exclusively by the nomination party. Any mineral lease selected from this Tract and awarded by the Louisiana State Mineral and Energy Board shall be without warranty of any kind, either express, implied, or statutory, including, but not limited to, the implied warranties of merchantability and fitness for a particular purpose. Should the mineral lease awarded by the Louisiana State Mineral and Energy Board be subsequently modified, cancelled or abrogated due to

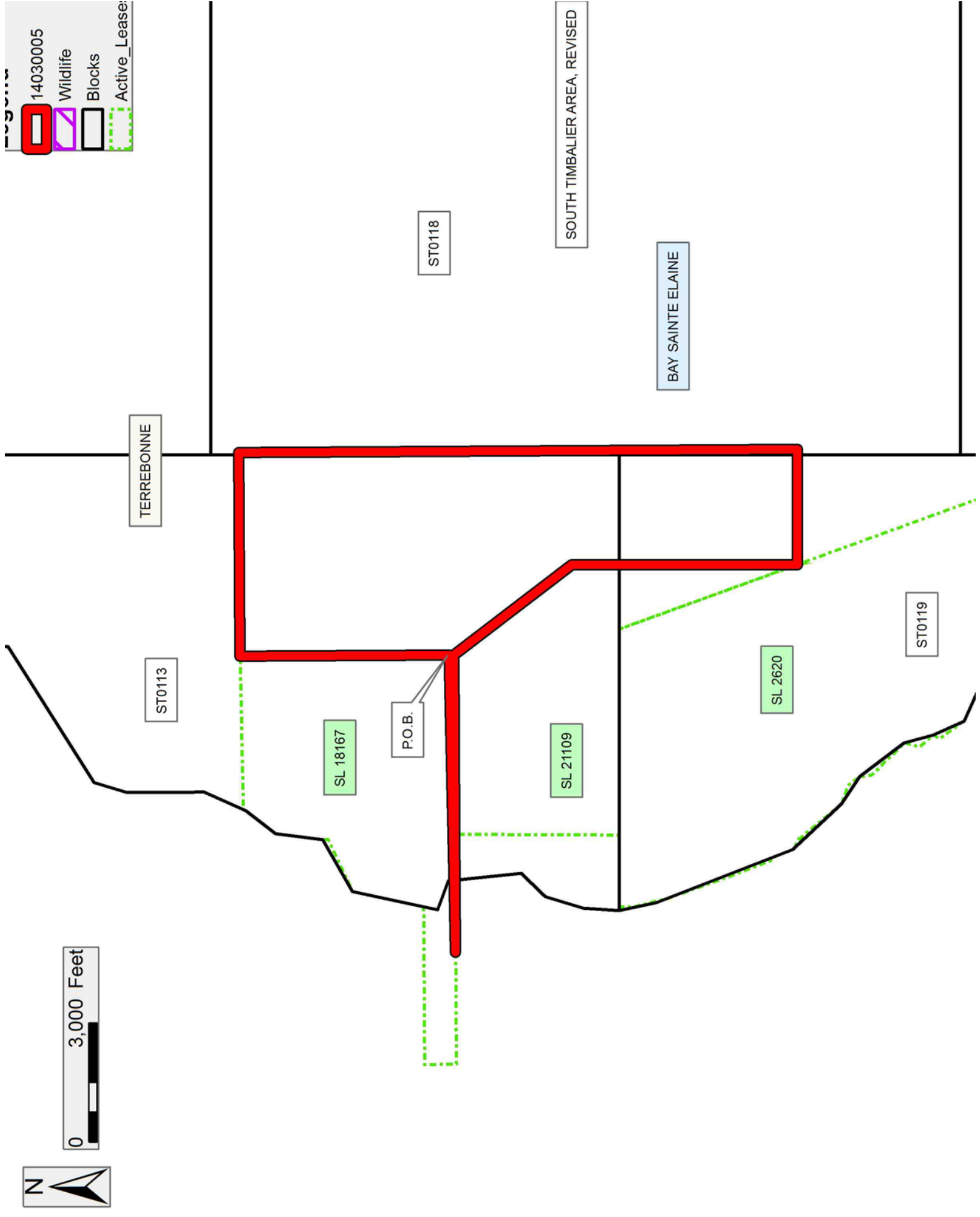
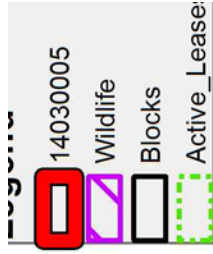
the existence of conflicting leases, operating agreements, private claims or other future obligations or conditions which may affect all or any portion of the leased Tract, it shall not relieve the Lessee of the obligation to pay any bonus due thereon to the Louisiana State Mineral and Energy Board, nor shall the Louisiana State Mineral and Energy Board be obligated to refund any consideration paid by the Lessor prior to such modification, cancellation, or abrogation, including, but not limited to, bonuses, rentals and royalties.

NOTE: The State of Louisiana does hereby reserve, and this lease shall be subject to, the imprescriptible right of surface use in the nature of a servitude in favor of the Department of Natural Resources, including its Offices and Commissions, for the sole purpose of implementing, constructing, servicing and maintaining approved coastal zone management and/or restoration projects. Utilization of any and all rights derived under this lease by the mineral lessee, its agents, successors or assigns, shall not interfere with nor hinder the reasonable surface use by the Department of Natural Resources, its Offices or Commissions, as herein above reserved.

NOTE: It appears, according to our records, that a portion of this Tract is located within the restrictive safety fairway area as set out by the Corps of Engineers, U.S. Army and/or the restrictive anchorage area as set out by the U.S. Coast Guard.

Applicant: ROBERT A. SCHROEDER, INC.

Bidder	Cash Payment	Price/Acre	Rental	Oil	Gas	Other



TRACT 43822 - Portion of Block 113, South Timbalier Area, Revised, Terrebonne Parish, Louisiana

All of the lands now or formerly constituting the beds and bottoms of all water bodies of every nature and description as to which title is vested in the State of Louisiana, together with all islands arising therein and other lands formed by accretion or by reliction, where allowed by law, excepting tax adjudicated lands, and not presently under mineral lease on March 12, 2014, situated in Terrebonne Parish, Louisiana, and more particularly described as follows: Beginning at a point having Coordinates of X = 2,221,190.83 and Y = 173,215.08, said point being the Northwest corner of State Lease No. 21109; thence South 00 degrees 14 minutes 24 seconds West 4,148.79 feet along the Western boundary of said State Lease No. 21109 to a point being its Southwest corner having Coordinates of X = 2,221,173.46 and Y = 169,066.33, said point also being on the Northern boundary of State Lease No. 2620, as amended; thence West 723.46 feet along the Northern boundary of said State Lease No. 2620 to a point having Coordinates of X = 2,220,450.00 and Y = 169,066.33, said point being the Easternmost Southeast corner of State Lease No. 16510, as amended; thence along the Eastern, Northern and Western boundaries of said State Lease No. 16510, as amended, the following courses: North 1,533.67 feet to a point being its Northeast corner having Coordinates of X = 2,220,450.00 and Y = 170,600.00; West 7,900.00 feet to a point being its Northwest corner having Coordinates of X = 2,212,550.00 and Y = 170,600.00; and South 2,710.00 feet to a point being its Southwest corner having Coordinates of X = 2,212,550.00 and Y = 167,890.00, said point also being the Northwest corner of State Lease No. 16511; thence South approximately 300 feet along the Western boundary of said State Lease No. 16511 to a point being its Southwest corner having a Coordinate of X = 2,212,550.00; thence Westerly approximately 7,670 feet to a point having Coordinates of X = 2,204,879.53 and Y = 167,593.73; thence Northerly approximately 4,184 feet, to a point being the Southwest corner of State Lease No. 199, as amended; thence along the Southern boundary of said State Lease No. 199, as amended, the following courses: Easterly approximately 5,354 feet, Northerly approximately 1,400 feet, Easterly approximately 4,230 feet, Northerly approximately 800 feet, and Easterly approximately 900 feet, to a point having Coordinates of X = 2,215,379.14 and Y = 173,981.12, said point being the Westernmost Northwest corner of State Lease No. 18167, as amended; thence along the Western and Southern boundaries of said State Lease No. 18167, as amended, the following courses: South 01 degrees 12 minutes 09 seconds East 802.42 feet point having Coordinates of X = 2,215,395.98 and Y = 173,178.88; and North 89 degrees 38 minutes 19 seconds East 2,821.09 feet point having Coordinates of X = 2,218,217.01 and Y = 173,196.67; thence North 89 degrees 38 minutes 43 seconds East 2,973.88 feet to the point of beginning, containing approximately **1,337 acres**, all as more particularly outlined on a plat on file in the Office of Mineral Resources, Department of Natural Resources. All bearings, distances and coordinates are based on Louisiana Coordinate System of 1927, (North or South Zone), where applicable.

NOTE: The above description of the Tract nominated for lease has been provided and corrected, where required, exclusively by the nomination party. Any mineral lease selected from this Tract and awarded by the Louisiana State Mineral and Energy Board shall be without warranty of any kind, either express, implied, or statutory, including, but not limited to, the implied warranties of merchantability and fitness for a particular purpose. Should the mineral lease awarded by the Louisiana State Mineral and Energy Board be subsequently modified, cancelled or abrogated due to the existence of conflicting leases, operating agreements, private claims or other future obligations or conditions which may affect all or any portion of the leased Tract, it shall not relieve the Lessee of the obligation to pay any bonus due thereon to the Louisiana State Mineral and Energy Board, nor shall the Louisiana State Mineral and Energy Board be obligated to refund any consideration paid by the Lessor prior to such modification, cancellation, or abrogation, including, but not limited to, bonuses, rentals and royalties.

NOTE: The State of Louisiana does hereby reserve, and this lease shall be subject to, the imprescriptible right of surface use in the nature of a servitude in favor of the Department of Natural Resources, including its Offices and Commissions, for the sole purpose of implementing, constructing, servicing and maintaining approved coastal zone management and/or restoration projects. Utilization of any and all rights derived under this lease by the mineral lessee, its agents, successors or assigns, shall not interfere with nor hinder the reasonable surface use by the Department of Natural Resources, its Offices or Commissions, as herein above reserved.

Applicant: ROBERT A. SCHROEDER, INC.

Bidder	Cash Payment	Price/Acre	Rental	Oil	Gas	Other

Legend

- 14030007
- Blocks
- Active_Leases

