

TRACT 43823 - St. Charles Parish, Louisiana

A certain Tract of land, excluding the beds and bottoms of all navigable waters, belonging to and not presently under mineral lease from St. Charles Parish Council on March 12, 2014, being more fully described as follows: Commencing at the point of beginning, having X = 2,307,734.77 and Y = 484,536.03; thence East 2,600 feet to a point having Coordinates of X = 2,310,334.77 and Y = 484,536.03; thence South 3,000 feet to a point having Coordinates of X = 2,310,334.77 and Y = 481,536.03; West 2,600 feet to a point having Coordinates of X = 2,307,734.77 and Y = 481,536.03; thence North 3,000 feet to the point of beginning. Further identifying those certain portions of ground situated in the Parish of St. Charles, State of Louisiana, Section 11, Township 12 South Range 8 East in that part thereof known as Cloverleaf Subdivision, as per plan by Murphy Engineering, Inc., based on survey of J.J. Krebs and Sons, Inc. dated September 21, 1972, a copy of which is on file in COB 138, folio 628 #43633 in the Office of the Clerk of Court, St. Charles Parish, Louisiana, being more particularly described as follows: Lots 10 (0.20666667 acres), 11 (0.20666667 acres), 12 (0.20666667 acres), Square 2; Lots 8 (0.2066 acres), 9 (0.2066 acres), 10 (0.2066 acres), 11 (0.2066 acres), 12 (0.2066 acres), Square 8; Lots 18 (0.21 acres) and 19 (0.21 acres), Square 3; Lot 10 (0.21 acres), Square 11; Lot 20 (0.207 acres) Square 11, and Lot 23 (0.207 acres) Square 2 said lots containing **2.697 acres**, all as more particularly outlined on a plat on file in the Office of Mineral Resources, Department of Natural Resources. The description is based on information provided by the State Agency regarding location and ownership of surface and mineral rights. All bearings, distances and coordinates, if applicable, are based on Louisiana Coordinate System of 1927, (North or South Zone).

NOTE: The above description of the Tract nominated for lease has been provided and corrected, where required, exclusively by the nomination party. Any mineral lease selected from this Tract and awarded by the Louisiana State Mineral and Energy Board shall be without warranty of any kind, either express, implied, or statutory, including, but not limited to, the implied warranties of merchantability and fitness for a particular purpose. Should the mineral lease awarded by the Louisiana State Mineral and Energy Board be subsequently modified, cancelled or abrogated due to the existence of conflicting leases, operating agreements, private claims or other future obligations or conditions which may affect all or any portion of the leased Tract, it shall not relieve the Lessee of the obligation to pay any bonus due thereon to the Louisiana State Mineral and Energy Board, nor shall the Louisiana State Mineral and Energy Board be obligated to refund any consideration paid by the Lessor prior to such modification, cancellation, or abrogation, including, but not limited to, bonuses, rentals and royalties.

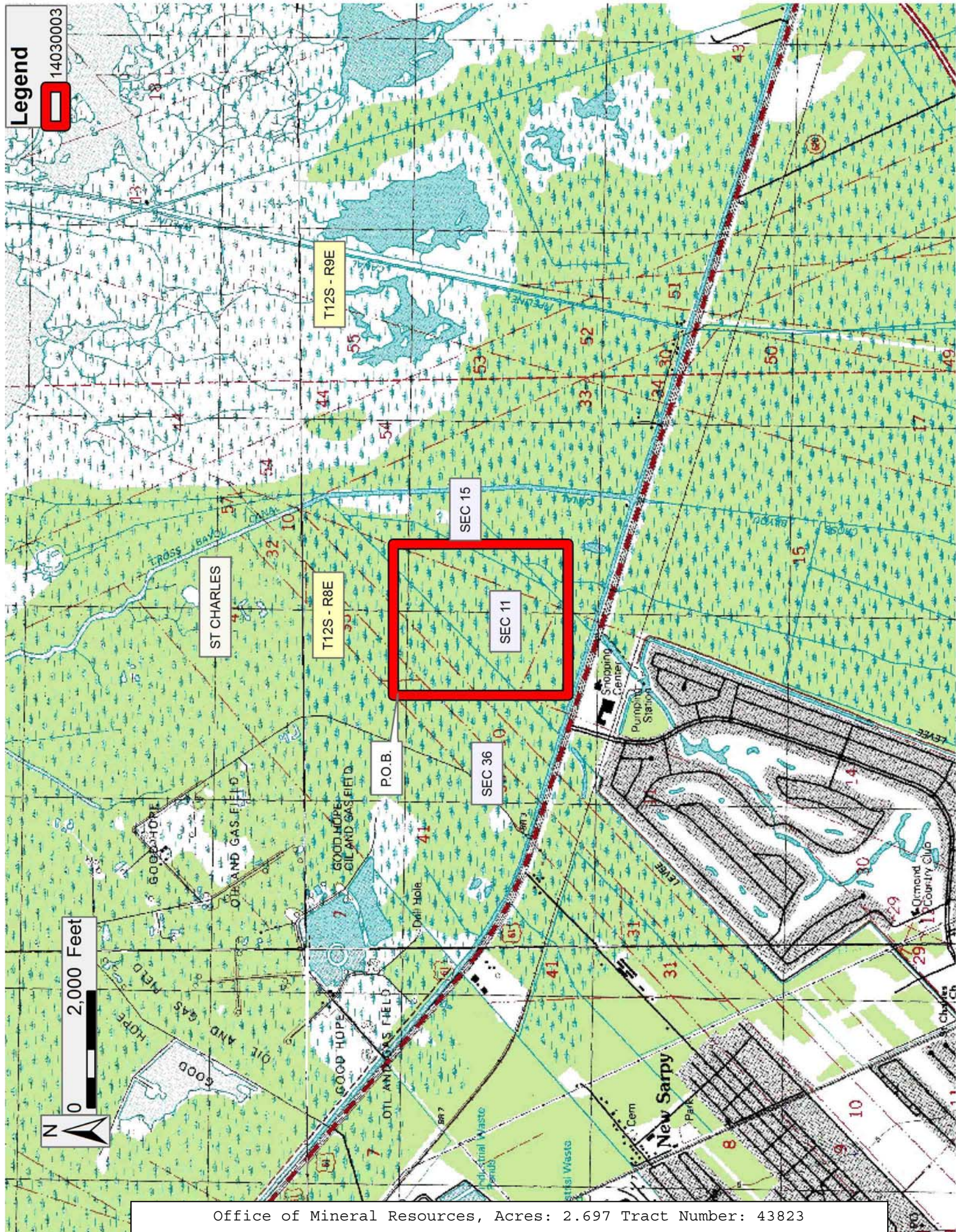
Applicant: STACI PITRE to Agency and by Resolution from the St. Charles Parish Council authorizing the Mineral Board to act in its behalf

Bidder	Cash Payment	Price/Acre	Rental	Oil	Gas	Other

Legend

14030003

0 2,000 Feet



Office of Mineral Resources, Acres: 2.697 Tract Number: 43823

TRACT 43824 - Plaquemines Parish, Louisiana

A certain Tract of land, excluding the beds and bottoms of all navigable waters, belonging to and not presently under mineral lease from Orleans Levee District on March 12, 2014, being more fully described as follows: All of the lands, excluding the beds and bottoms of all navigable waters, and being described as follows: all of Section 15; the North Half (N/2) of Section 22; and the Northwest Quarter (NW/4) of Section 23, Township 18 South, Range 16 East, Plaquemines Parish, Louisiana. The above described lands contain approximately **281 acres**, all as more particularly outlined on a plat on file in the Office of Mineral Resources, Department of Natural Resources. The description is based on information provided by the State Agency regarding location and ownership of surface and mineral rights. All bearings, distances and coordinates, if applicable, are based on Louisiana Coordinate System of 1927, (North or South Zone).

NOTE: The above description of the Tract nominated for lease has been provided and corrected, where required, exclusively by the nomination party. Any mineral lease selected from this Tract and awarded by the Louisiana State Mineral and Energy Board shall be without warranty of any kind, either express, implied, or statutory, including, but not limited to, the implied warranties of merchantability and fitness for a particular purpose. Should the mineral lease awarded by the Louisiana State Mineral and Energy Board be subsequently modified, cancelled or abrogated due to the existence of conflicting leases, operating agreements, private claims or other future obligations or conditions which may affect all or any portion of the leased Tract, it shall not relieve the Lessee of the obligation to pay any bonus due thereon to the Louisiana State Mineral and Energy Board, nor shall the Louisiana State Mineral and Energy Board be obligated to refund any consideration paid by the Lessor prior to such modification, cancellation, or abrogation, including, but not limited to, bonuses, rentals and royalties.

Applicant: ROBERT A. SCHROEDER, INC. to Agency and by Resolution from the Orleans Levee District authorizing the Mineral Board to act in its behalf

Bidder	Cash Payment	Price/Acre	Rental	Oil	Gas	Other

Legend

14030021



PLAQUEMINES

T18S - R16E

0 2,000 Feet



CALIFORNIA

CALIFORNIA

SEC 14

SEC 23

SEC 15

SEC 22

SUNRISE POINT

CALIFORNIA

AUGUST BAY

Drill Hole

09/1980

TRACT 43825 - Plaquemines Parish, Louisiana

A certain Tract of land, excluding the beds and bottoms of all navigable waters, belonging to and not presently under mineral lease from Orleans Levee District on March 12, 2014, being more fully described as follows: All of the lands, excluding the beds and bottoms of all navigable waters, and being described as follows: the South Half (S/2) of Section 22; all of Section 26; and all of Section 27, Township 18 South, Range 16 East, Plaquemines Parish, Louisiana. The above described lands contain approximately **532 acres**, all as more particularly outlined on a plat on file in the Office of Mineral Resources, Department of Natural Resources. The description is based on information provided by the State Agency regarding location and ownership of surface and mineral rights. All bearings, distances and coordinates, if applicable, are based on Louisiana Coordinate System of 1927, (North or South Zone).

NOTE: The above description of the Tract nominated for lease has been provided and corrected, where required, exclusively by the nomination party. Any mineral lease selected from this Tract and awarded by the Louisiana State Mineral and Energy Board shall be without warranty of any kind, either express, implied, or statutory, including, but not limited to, the implied warranties of merchantability and fitness for a particular purpose. Should the mineral lease awarded by the Louisiana State Mineral and Energy Board be subsequently modified, cancelled or abrogated due to the existence of conflicting leases, operating agreements, private claims or other future obligations or conditions which may affect all or any portion of the leased Tract, it shall not relieve the Lessee of the obligation to pay any bonus due thereon to the Louisiana State Mineral and Energy Board, nor shall the Louisiana State Mineral and Energy Board be obligated to refund any consideration paid by the Lessor prior to such modification, cancellation, or abrogation, including, but not limited to, bonuses, rentals and royalties.

Applicant: ROBERT A. SCHROEDER, INC. to Agency and by Resolution from the Orleans Levee District authorizing the Mineral Board to act in its behalf

Bidder	Cash Payment	Price/Acre	Rental	Oil	Gas	Other

Legend

14030022



PLAQUEMINES

CALIFORNIA BAY

SEC 23

SEC 26

SEC 22

SEC 27

T18S - R16E

0 3,000 Feet



TRACT 43826 - Plaquemines Parish, Louisiana

A certain Tract of land, excluding the beds and bottoms of all navigable waters, belonging to and not presently under mineral lease from Orleans Levee District on March 12, 2014, being more fully described as follows: Township 18 South Range 16 East Section 36: All. Township 19 South Range 16 East Section 1: North Half (N/2). The above described lands contain approximately **266 acres**, all as more particularly outlined on a plat on file in the Office of Mineral Resources, Department of Natural Resources. The description is based on information provided by the State Agency regarding location and ownership of surface and mineral rights. All bearings, distances and coordinates, if applicable, are based on Louisiana Coordinate System of 1927, (North or South Zone).

NOTE: The above description of the Tract nominated for lease has been provided and corrected, where required, exclusively by the nomination party. Any mineral lease selected from this Tract and awarded by the Louisiana State Mineral and Energy Board shall be without warranty of any kind, either express, implied, or statutory, including, but not limited to, the implied warranties of merchantability and fitness for a particular purpose. Should the mineral lease awarded by the Louisiana State Mineral and Energy Board be subsequently modified, cancelled or abrogated due to the existence of conflicting leases, operating agreements, private claims or other future obligations or conditions which may affect all or any portion of the leased Tract, it shall not relieve the Lessee of the obligation to pay any bonus due thereon to the Louisiana State Mineral and Energy Board, nor shall the Louisiana State Mineral and Energy Board be obligated to refund any consideration paid by the Lessor prior to such modification, cancellation, or abrogation, including, but not limited to, bonuses, rentals and royalties.

Applicant: ROBERT A. SCHROEDER, INC. to Agency and by Resolution from the Orleans Levee District authorizing the Mineral Board to act in its behalf

Bidder	Cash Payment	Price/Acre	Rental	Oil	Gas	Other

Legend

14030023



PLAQUEMINES



Caldonia Point

Gooper Bay

Gooper Bay

SEC 36

SEC 35

SEC 1

SEC 2

QUARANTINE BAY