

TRACT 43837 - Catahoula and Concordia Parishes, Louisiana

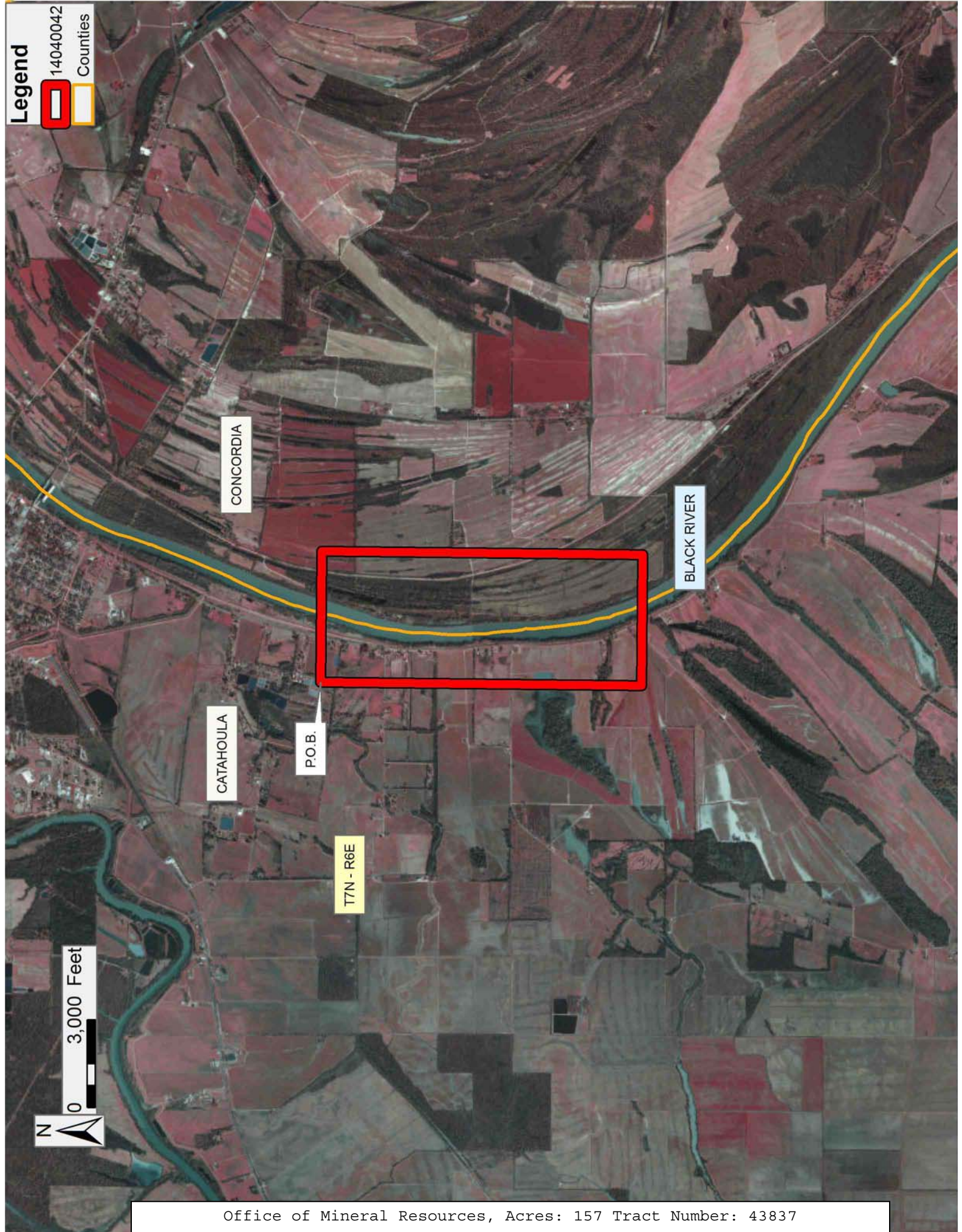
All of the lands now or formerly constituting the beds and bottoms of all water bodies of every nature and description as to which title is vested in the State of Louisiana, together with all islands arising therein and other lands formed by accretion or by reliction, where allowed by law, excepting tax adjudicated lands, and not presently under mineral lease on April 9, 2014, situated in Catahoula and Concordia Parishes, Louisiana, and more particularly described as follows: Beginning at a point having Coordinates of X = 2,207,700.00 and Y = 338,900.00; thence East 4,500.00 feet to a point having Coordinates of X = 2,212,200.00 and Y = 338,900.00; thence South 11,000.00 feet to a point having Coordinates of X = 2,212,200.00 and Y = 327,900.00; thence West 4,500.00 feet to a point having Coordinates of X = 2,207,700.00 and Y = 327,900.00; thence North 11,000.00 feet to the point of beginning, containing approximately **157 acres**, all as more particularly outlined on a plat on file in the Office of Mineral Resources, Department of Natural Resources. All bearings, distances and coordinates are based on Louisiana Coordinate System of 1927, (North or South Zone), where applicable.

NOTE: The above description of the Tract nominated for lease has been provided and corrected, where required, exclusively by the nomination party. Any mineral lease selected from this Tract and awarded by the Louisiana State Mineral and Energy Board shall be without warranty of any kind, either express, implied, or statutory, including, but not limited to, the implied warranties of merchantability and fitness for a particular purpose. Should the mineral lease awarded by the Louisiana State Mineral and Energy Board be subsequently modified, cancelled or abrogated due to the existence of conflicting leases, operating agreements, private claims or other future obligations or conditions which may affect all or any portion of the leased Tract, it shall not relieve the Lessee of the obligation to pay any bonus due thereon to the Louisiana State Mineral and Energy Board, nor shall the Louisiana State Mineral and Energy Board be obligated to refund any consideration paid by the Lessor prior to such modification, cancellation, or abrogation, including, but not limited to, bonuses, rentals and royalties.

Applicant: ALBERT S. RUFFIN, JR.

Bidder	Cash Payment	Price/Acre	Rental	Oil	Gas	Other

Legend
14040042
Counties



Office of Mineral Resources, Acres: 157 Tract Number: 43837

TRACT 43838 - LaSalle and Rapides Parishes, Louisiana

All of the lands now or formerly constituting the beds and bottoms of all water bodies of every nature and description as to which title is vested in the State of Louisiana, together with all islands arising therein and other lands formed by accretion or by reliction, where allowed by law, excepting tax adjudicated lands, and not presently under mineral lease on April 9, 2014, situated in LaSalle and Rapides Parishes, Louisiana, and more particularly described as follows: Beginning at a point having Coordinates of X = 2,105,807.17 and Y = 273,153.08; thence North 89 degrees 48 minutes 51 seconds East 5,344.10 feet to a point having Coordinates of X = 2,111,151.24 and Y = 273,170.42; thence South 00 degrees 34 minutes 55 seconds East 5,338.89 feet to a point having Coordinates of X = 2,111,205.47 and Y = 267,831.81; thence South 89 degrees 38 minutes 12 seconds West 5,375.65 feet to a point having Coordinates of X = 2,105,829.93 and Y = 267,797.71; thence North 00 degrees 14 minutes 37 seconds West 5,355.42 feet to the point of beginning, **LESS AND EXCEPT** any right, title, and interest in lands owned by and not under lease from the State of Louisiana, on behalf of the Rapides and LaSalle Parish School Boards, situated in Section 16, Township 5 North, Range 3 East, Rapides and LaSalle Parishes, Louisiana, contained within the above described tract, and also **LESS AND EXCEPT** that portion, if any, of the above described tract that may lie inside of the boundary of the Dewey W. Wills WMA, containing approximately **13 acres**, all as more particularly outlined on a plat on file in the Office of Mineral Resources, Department of Natural Resources. All bearings, distances and coordinates are based on Louisiana Coordinate System of 1927, (North or South Zone), where applicable.

NOTE: The above description of the Tract nominated for lease has been provided and corrected, where required, exclusively by the nomination party. Any mineral lease selected from this Tract and awarded by the Louisiana State Mineral and Energy Board shall be without warranty of any kind, either express, implied, or statutory, including, but not limited to, the implied warranties of merchantability and fitness for a particular purpose. Should the mineral lease awarded by the Louisiana State Mineral and Energy Board be subsequently modified, cancelled or abrogated due to the existence of conflicting leases, operating agreements, private claims or other future obligations or conditions which may affect all or any portion of the leased Tract, it shall not relieve the Lessee of the obligation to pay any bonus due thereon to the Louisiana State Mineral and Energy Board, nor shall the Louisiana State Mineral and Energy Board be obligated to refund any consideration paid by the Lessor prior to such modification, cancellation, or abrogation, including, but not limited to, bonuses, rentals and royalties.

Applicant: THEOPHILUS OIL, GAS & LAND SERVICES, LLC

Bidder	Cash Payment	Price/Acre	Rental	Oil	Gas	Other

Legend

- 14040016
- Wildlife
- Counties

DEWEY W WILLS WMA

BIG SALINE BAYOU

LA SALLE

T5N - R3E



RAPIDES

T5N - R3E

P.O.B.

0 2,000 Feet

TRACT 43839 - Avoyelles and Concordia Parishes, Louisiana

All of the lands now or formerly constituting the beds and bottoms of all water bodies of every nature and description as to which title is vested in the State of Louisiana, together with all islands arising therein and other lands formed by accretion or by reliction, where allowed by law, excepting tax adjudicated lands, and not presently under mineral lease on April 9, 2014, situated in Avoyelles and Concordia Parishes, Louisiana, and more particularly described as follows: Beginning at a point having Coordinates of X = 2,254,203.46 and Y = 190,515.49; thence East 8,269.58 feet to a point having Coordinates of X = 2,262,473.04 and Y = 190,515.49; thence South 31 degrees 36 minutes 35 seconds West 15,456.63 feet to a point having Coordinates of X = 2,254,371.75 and Y = 177,352.04; thence West 8,269.58 feet to a point having Coordinates of X = 2,246,102.17 and Y = 177,352.04; thence North 31 degrees 36 minutes 35 seconds East 15,456.63 feet to the point of beginning, (This tract includes only waterbottoms claimed and owned by the state and specifically excludes any School Indemnity land and any land which the state or Wildlife and Fisheries may claim or own and to which the mineral rights are vested in them), and **LESS AND EXCEPT** any right, title, and interest in lands owned by and not under lease from the State of Louisiana, on behalf of the Concordia Parish School Board, situated in Section 16, Township 2 North, Range 8 East, Concordia, Louisiana, contained within the above described tract containing approximately **432 acres**, all as more particularly outlined on a plat on file in the Office of Mineral Resources, Department of Natural Resources. All bearings, distances and coordinates are based on Louisiana Coordinate System of 1927, (North or South Zone), where applicable.

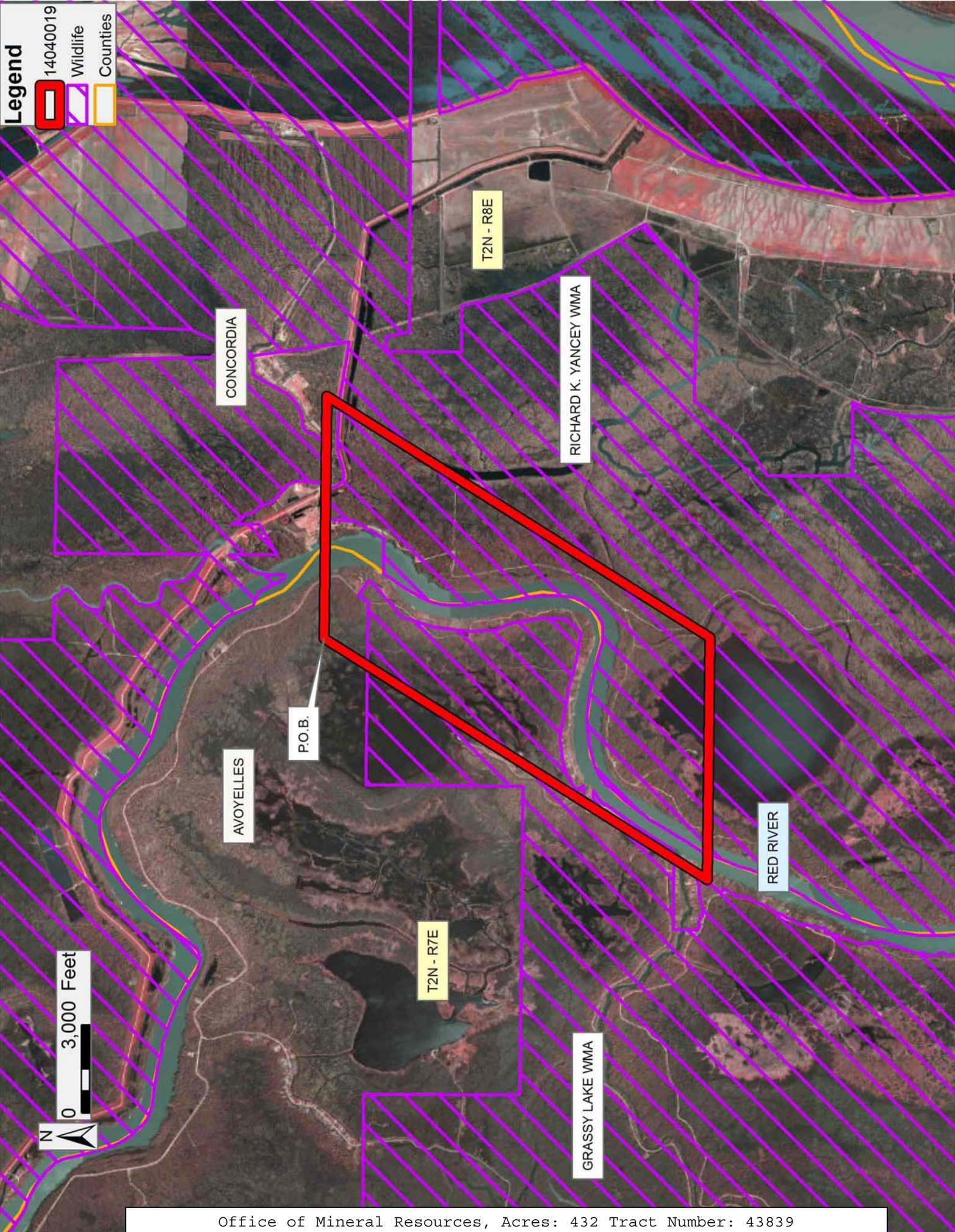
NOTE: The above description of the Tract nominated for lease has been provided and corrected, where required, exclusively by the nomination party. Any mineral lease selected from this Tract and awarded by the Louisiana State Mineral and Energy Board shall be without warranty of any kind, either express, implied, or statutory, including, but not limited to, the implied warranties of merchantability and fitness for a particular purpose. Should the mineral lease awarded by the Louisiana State Mineral and Energy Board be subsequently modified, cancelled or abrogated due to the existence of conflicting leases, operating agreements, private claims or other future obligations or conditions which may affect all or any portion of the leased Tract, it shall not relieve the Lessee of the obligation to pay any bonus due thereon to the Louisiana State Mineral and Energy Board, nor shall the Louisiana State Mineral and Energy Board be obligated to refund any consideration paid by the Lessor prior to such modification, cancellation, or abrogation, including, but not limited to, bonuses, rentals and royalties.

Applicant: THEOPHILUS OIL, GAS & LAND SERVICES, LLC

Bidder	Cash Payment	Price/Acre	Rental	Oil	Gas	Other

Legend

- 14040019
- Wildlife
- Counties



TRACT 43840 - Pointe Coupee Parish, Louisiana

All of the lands now or formerly constituting the beds and bottoms of all water bodies of every nature and description as to which title is vested in the State of Louisiana, together with all islands arising therein and other lands formed by accretion or by reliction, where allowed by law, excepting tax adjudicated lands, and not presently under mineral lease on April 9, 2014, situated in Pointe Coupee Parish, Louisiana, and more particularly described as follows: Beginning at a point having Coordinates of X = 1,928,283.17 and Y = 681,218.35; thence North 76 degrees 41 minutes 53 seconds East 17,206.70 feet to a point having Coordinates of X = 1,945,028.22 and Y = 685,177.35; thence South 10 degrees 09 minutes 09 seconds East 9,292.05 feet to a point having Coordinates of X = 1,946,666.12 and Y = 676,030.79; thence South 73 degrees 42 minutes 26 seconds West 16,544.89 feet to a point having Coordinates of X = 1,930,785.65 and Y = 671,389.22; thence North 14 degrees 17 minutes 02 seconds West 10,142.69 feet to the point of beginning, containing approximately **23 acres**, all as more particularly outlined on a plat on file in the Office of Mineral Resources, Department of Natural Resources. All bearings, distances and coordinates are based on Louisiana Coordinate System of 1927, (North or South Zone), where applicable.

NOTE: The above description of the Tract nominated for lease has been provided and corrected, where required, exclusively by the nomination party. Any mineral lease selected from this Tract and awarded by the Louisiana State Mineral and Energy Board shall be without warranty of any kind, either express, implied, or statutory, including, but not limited to, the implied warranties of merchantability and fitness for a particular purpose. Should the mineral lease awarded by the Louisiana State Mineral and Energy Board be subsequently modified, cancelled or abrogated due to the existence of conflicting leases, operating agreements, private claims or other future obligations or conditions which may affect all or any portion of the leased Tract, it shall not relieve the Lessee of the obligation to pay any bonus due thereon to the Louisiana State Mineral and Energy Board, nor shall the Louisiana State Mineral and Energy Board be obligated to refund any consideration paid by the Lessor prior to such modification, cancellation, or abrogation, including, but not limited to, bonuses, rentals and royalties.

Bidder	Cash Payment	Price/Acre	Rental	Oil	Gas	Other

Applicant: THEOPHILUS OIL, GAS & LAND SERVICES, LLC

Legend
14040034



POINTE COUPEE

T6S - R10E

BAYOU GROSSE TETE

3,000 Feet



P.O.B.

T6S - R9E

TRACT 43841 - Iberville and Pointe Coupee Parishes, Louisiana

All of the lands now or formerly constituting the beds and bottoms of all water bodies of every nature and description as to which title is vested in the State of Louisiana, together with all islands arising therein and other lands formed by accretion or by reliction, where allowed by law, excepting tax adjudicated lands, and not presently under mineral lease on April 9, 2014, situated in Iberville and Pointe Coupee Parishes, Louisiana, and more particularly described as follows: Beginning at a point having Coordinates of X = 1,930,785.65 and Y = 671,389.22; thence North 73 degrees 42 minutes 26 seconds East 16,544.89 feet to a point having Coordinates of X = 1,946,666.12 and Y = 676,030.79; thence South 14 degrees 12 minutes 53 seconds East 9,593.68 feet to a point having Coordinates of X = 1,949,021.93 and Y = 666,730.85; thence South 71 degrees 34 minutes 28 seconds West 6,467.10 feet to a point having Coordinates of X = 1,942,886.36 and Y = 664,686.79; thence South 72 degrees 12 minutes 11 seconds West 9,581.65 feet to a point having Coordinates of X = 1,933,763.24 and Y = 661,758.20; thence North 17 degrees 10 minutes 48 seconds West 10,080.80 feet to the point of beginning, **LESS AND EXCEPT** all that portion of State Lease No. 12718 that lies within the above described tract, containing approximately **21 acres**, all as more particularly outlined on a plat on file in the Office of Mineral Resources, Department of Natural Resources. All bearings, distances and coordinates are based on Louisiana Coordinate System of 1927, (North or South Zone), where applicable.

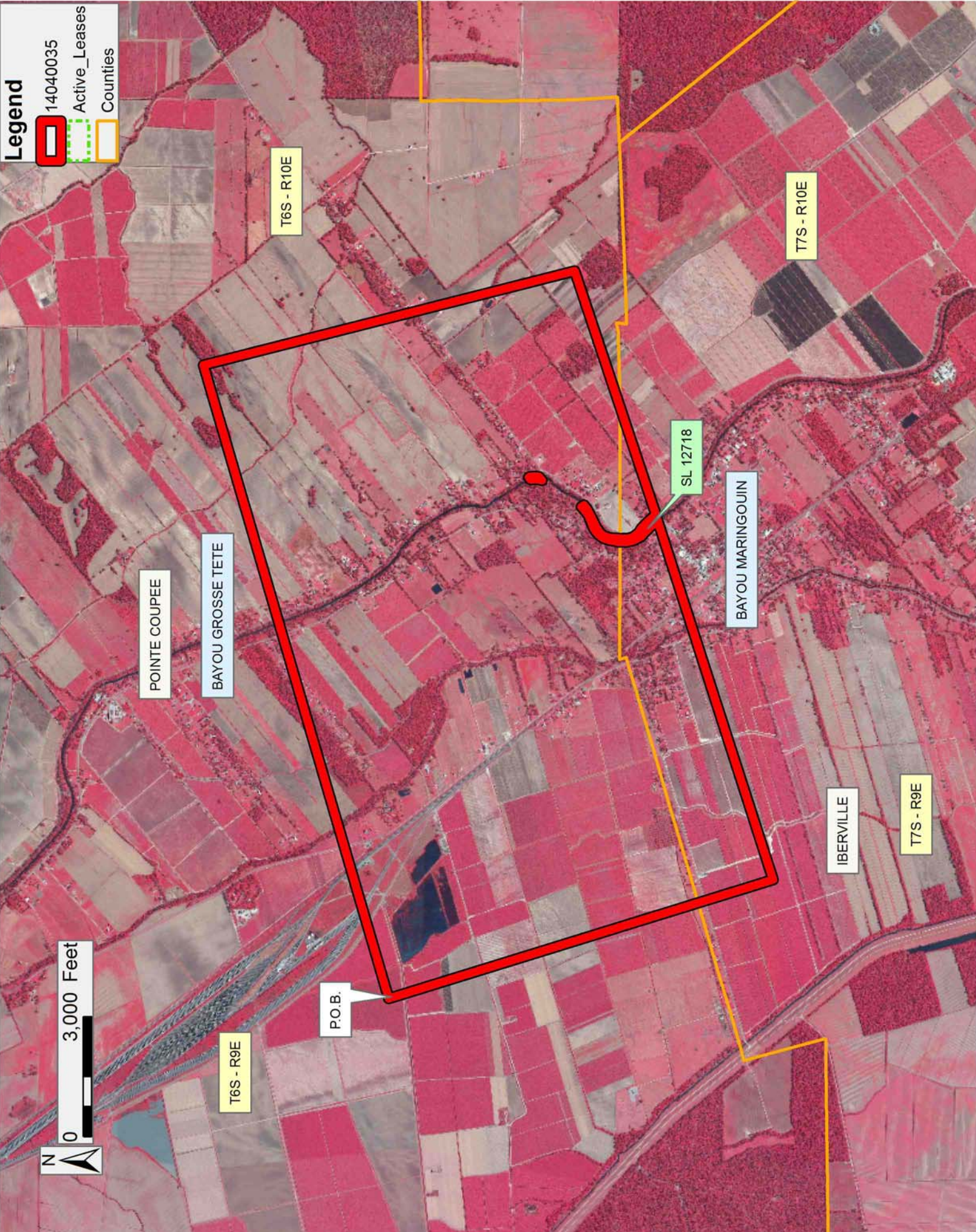
NOTE: The above description of the Tract nominated for lease has been provided and corrected, where required, exclusively by the nomination party. Any mineral lease selected from this Tract and awarded by the Louisiana State Mineral and Energy Board shall be without warranty of any kind, either express, implied, or statutory, including, but not limited to, the implied warranties of merchantability and fitness for a particular purpose. Should the mineral lease awarded by the Louisiana State Mineral and Energy Board be subsequently modified, cancelled or abrogated due to the existence of conflicting leases, operating agreements, private claims or other future obligations or conditions which may affect all or any portion of the leased Tract, it shall not relieve the Lessee of the obligation to pay any bonus due thereon to the Louisiana State Mineral and Energy Board, nor shall the Louisiana State Mineral and Energy Board be obligated to refund any consideration paid by the Lessor prior to such modification, cancellation, or abrogation, including, but not limited to, bonuses, rentals and royalties.

Applicant: THEOPHILUS OIL, GAS & LAND SERVICES, LLC

Bidder	Cash Payment	Price/Acre	Rental	Oil	Gas	Other

Legend

- 14040035
- Active_Leases
- Counties



TRACT 43842 - Iberville and Pointe Coupee Parishes, Louisiana

All of the lands now or formerly constituting the beds and bottoms of all water bodies of every nature and description as to which title is vested in the State of Louisiana, together with all islands arising therein and other lands formed by accretion or by reliction, where allowed by law, excepting tax adjudicated lands, and not presently under mineral lease on April 9, 2014, situated in Iberville and Pointe Coupee Parishes, Louisiana, and more particularly described as follows: Beginning at a point having Coordinates of X = 1,942,886.36 and Y = 664,686.79; thence North 71 degrees 34 minutes 28 seconds East 6,467.10 feet to a point having Coordinates of X = 1,949,021.93 and Y = 666,730.85; thence South 43 degrees 43 minutes 27 seconds East 16,670.43 feet to a point having Coordinates of X = 1,960,544.33 and Y = 654,683.54; thence South 69 degrees 20 minutes 28 seconds West 8,813.17 feet to a point having Coordinates of X = 1,952,297.87 and Y = 651,574.22; thence South 69 degrees 28 minutes 00 seconds West 5,138.49 feet to a point having Coordinates of X = 1,947,485.84 and Y = 649,771.88; thence North 16 degrees 22 minutes 40 seconds West 5,955.73 feet to a point having Coordinates of X = 1,945,806.50 and Y = 655,485.94; thence North 17 degrees 36 minutes 30 seconds West 9,653.13 feet to the point of beginning, **LESS AND EXCEPT** all that portion of State Lease No. 12718 that lies within the above described tract, and **LESS AND EXCEPT** any right, title, and interest in lands owned by and not under lease from the State of Louisiana, on behalf of the Iberville School Board, situated in Section 16, Township 7 South, Range 10 East, and Range 9 East, Iberville Parish, Louisiana, contained within the above described tract, containing approximately **43 acres**, all as more particularly outlined on a plat on file in the Office of Mineral Resources, Department of Natural Resources. All bearings, distances and coordinates are based on Louisiana Coordinate System of 1927, (North or South Zone), where applicable.

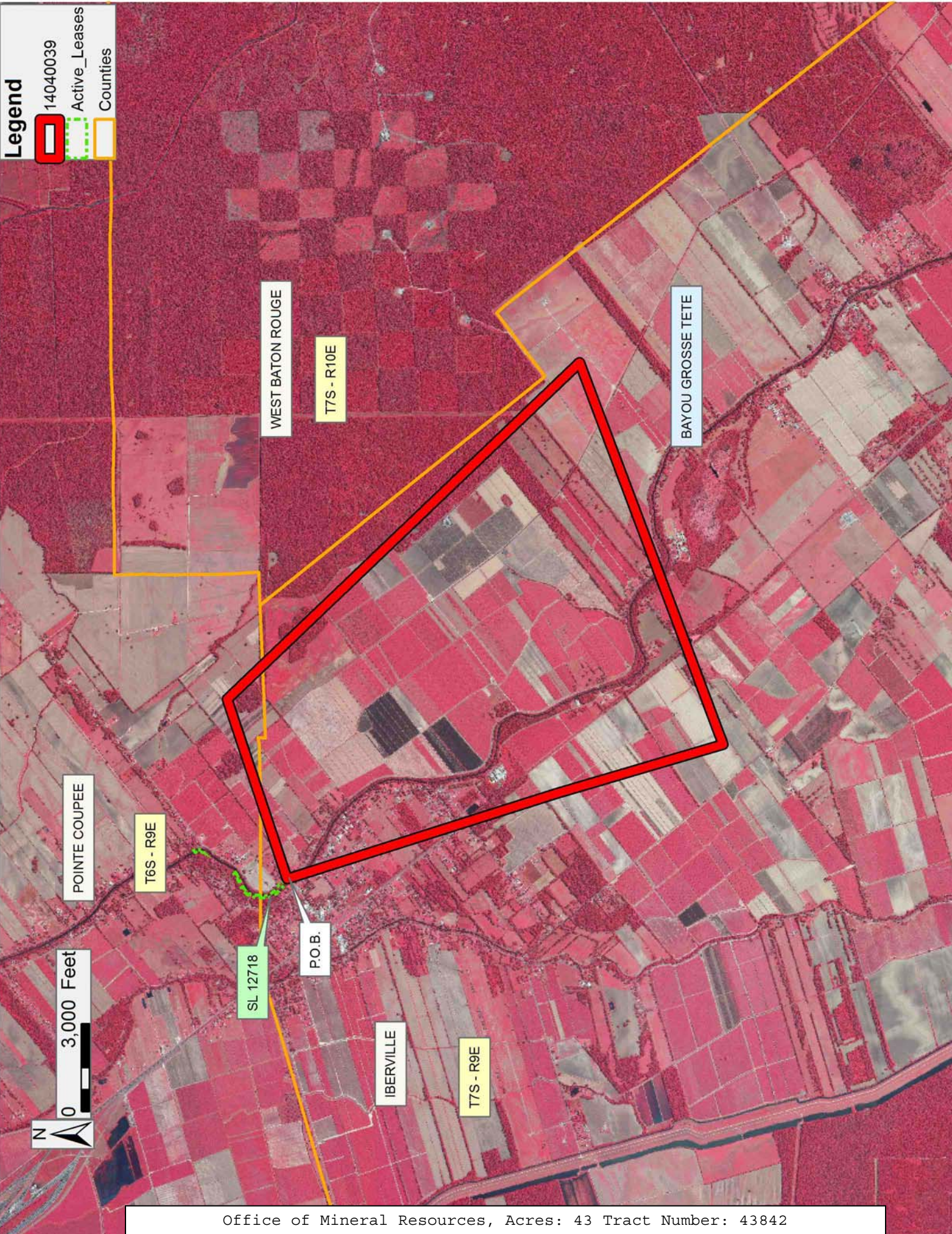
NOTE: The above description of the Tract nominated for lease has been provided and corrected, where required, exclusively by the nomination party. Any mineral lease selected from this Tract and awarded by the Louisiana State Mineral and Energy Board shall be without warranty of any kind, either express, implied, or statutory, including, but not limited to, the implied warranties of merchantability and fitness for a particular purpose. Should the mineral lease awarded by the Louisiana State Mineral and Energy Board be subsequently modified, cancelled or abrogated due to the existence of conflicting leases, operating agreements, private claims or other future obligations or conditions which may affect all or any portion of the leased Tract, it shall not relieve the Lessee of the obligation to pay any bonus due thereon to the Louisiana State Mineral and Energy Board, nor shall the Louisiana State Mineral and Energy Board be obligated to refund any consideration paid by the Lessor prior to such modification, cancellation, or abrogation, including, but not limited to, bonuses, rentals and royalties.

Applicant: THEOPHILUS OIL, GAS & LAND SERVICES, LLC

Bidder	Cash Payment	Price/Acre	Rental	Oil	Gas	Other

Legend

- 14040039
- Active_Leases
- Counties



TRACT 43843 - Iberville and Pointe Coupee Parishes, Louisiana

All of the lands now or formerly constituting the beds and bottoms of all water bodies of every nature and description as to which title is vested in the State of Louisiana, together with all islands arising therein and other lands formed by accretion or by reliction, where allowed by law, excepting tax adjudicated lands, and not presently under mineral lease on April 9, 2014, situated in Iberville and Pointe Coupee Parishes, Louisiana, and more particularly described as follows: Beginning at a point having Coordinates of X = 1,929,478.99 and Y = 660,440.12; thence North 72 degrees 53 minutes 57 seconds East 4,482.43 feet to a point having Coordinates of X = 1,933,763.24 and Y = 661,758.20; thence North 72 degrees 12 minutes 11 seconds East 9,581.65 feet to a point having Coordinates of X = 1,942,886.36 and Y = 664,686.79; thence South 17 degrees 36 minutes 30 seconds East 9,653.13 feet to a point having Coordinates of X = 1,945,806.50 and Y = 655,485.94; thence South 73 degrees 20 minutes 40 seconds West 14,380.12 feet to a point having Coordinates of X = 1,932,029.70 and Y = 651,364.35; thence North 15 degrees 41 minutes 52 seconds West 9,427.39 feet to the point of beginning, **LESS AND EXCEPT** all that portion of State Lease No. 12718 that lies within the above described tract, and **LESS AND EXCEPT** that portion, if any, of the above described tract that may lie inside of the boundary of the Atchafalaya Basin, containing approximately **9 acres**, all as more particularly outlined on a plat on file in the Office of Mineral Resources, Department of Natural Resources. All bearings, distances and coordinates are based on Louisiana Coordinate System of 1927, (North or South Zone), where applicable.

NOTE: The above description of the Tract nominated for lease has been provided and corrected, where required, exclusively by the nomination party. Any mineral lease selected from this Tract and awarded by the Louisiana State Mineral and Energy Board shall be without warranty of any kind, either express, implied, or statutory, including, but not limited to, the implied warranties of merchantability and fitness for a particular purpose. Should the mineral lease awarded by the Louisiana State Mineral and Energy Board be subsequently modified, cancelled or abrogated due to the existence of conflicting leases, operating agreements, private claims or other future obligations or conditions which may affect all or any portion of the leased Tract, it shall not relieve the Lessee of the obligation to pay any bonus due thereon to the Louisiana State Mineral and Energy Board, nor shall the Louisiana State Mineral and Energy Board be obligated to refund any consideration paid by the Lessor prior to such modification, cancellation, or abrogation, including, but not limited to, bonuses, rentals and royalties.

Applicant: THEOPHILUS OIL, GAS & LAND SERVICES, LLC

Bidder	Cash Payment	Price/Acre	Rental	Oil	Gas	Other

Legend

14040036



T6S - R9E

POINTE COUPEE

BAYOU GROSSE TETE

BAYOU MARINGOUIN



P.O.B.

IBERVILLE

T7S - R9E

TRACT 43844 - Iberville Parish, Louisiana

All of the lands now or formerly constituting the beds and bottoms of all water bodies of every nature and description as to which title is vested in the State of Louisiana, together with all islands arising therein and other lands formed by accretion or by reliction, where allowed by law, excepting tax adjudicated lands, and not presently under mineral lease on April 9, 2014, situated in Iberville Parish, Louisiana, and more particularly described as follows: Beginning at a point having Coordinates of X = 1,932,029.70 and Y = 651,364.35; thence North 73 degrees 20 minutes 40 seconds East 14,380.12 feet to a point having Coordinates of X = 1,945,806.50 and Y = 655,485.94; thence South 16 degrees 22 minutes 40 seconds East 5,955.73 feet to a point having Coordinates of X = 1,947,485.84 and Y = 649,771.88; thence South 10 degrees 25 minutes 31 seconds East 8,912.59 feet to a point having Coordinates of X = 1,949,098.61 and Y = 641,006.42; thence South 77 degrees 25 minutes 47 seconds West 14,273.26 feet to a point having Coordinates of X = 1,935,167.49 and Y = 637,900.00; thence North 13 degrees 07 minutes 06 seconds West 13,825.14 feet to the point of beginning, **LESS AND EXCEPT** that portion, if any, of the above described tract that may lie inside of the boundary of the Atchafalaya Basin, and **LESS AND EXCEPT** any right, title, and interest in lands owned by and not under lease from the State of Louisiana, on behalf of the Iberville Parish School Board, situated in Section 16, Township 7 South, Range 9 East, Iberville Parish, Louisiana, contained within the above described tract, (This tract includes only waterbottoms claimed and owned by the state and specifically excludes any land which the state or Wildlife and Fisheries may claim or own and to which the mineral rights are vested in them), containing approximately **11 acres**, all as more particularly outlined on a plat on file in the Office of Mineral Resources, Department of Natural Resources. All bearings, distances and coordinates are based on Louisiana Coordinate System of 1927, (North or South Zone), where applicable.

NOTE: The above description of the Tract nominated for lease has been provided and corrected, where required, exclusively by the nomination party. Any mineral lease selected from this Tract and awarded by the Louisiana State Mineral and Energy Board shall be without warranty of any kind, either express, implied, or statutory, including, but not limited to, the implied warranties of merchantability and fitness for a particular purpose. Should the mineral lease awarded by the Louisiana State Mineral and Energy Board be subsequently modified, cancelled or abrogated due to the existence of conflicting leases, operating agreements, private claims or other future obligations or conditions which may affect all or any portion of the leased Tract, it shall not relieve the Lessee of the obligation to pay any bonus due thereon to the Louisiana State Mineral and Energy Board, nor shall the Louisiana State Mineral and Energy Board be obligated to refund any consideration paid by the Lessor prior to such modification, cancellation, or abrogation, including, but not limited to, bonuses, rentals and royalties.

Applicant: THEOPHILUS OIL, GAS & LAND SERVICES, LLC

Bidder	Cash Payment	Price/Acre	Rental	Oil	Gas	Other

Legend



IBERVILLE

T7S - R9E

T7S - R10E

BAYOU MARINGOUIN

SHERBURNE WMA

P.O.B.



TRACT 43845 - Iberville Parish, Louisiana

All of the lands now or formerly constituting the beds and bottoms of all water bodies of every nature and description as to which title is vested in the State of Louisiana, together with all islands arising therein and other lands formed by accretion or by reliction, where allowed by law, excepting tax adjudicated lands, and not presently under mineral lease on April 9, 2014, situated in Iberville Parish, Louisiana, and more particularly described as follows: Beginning at a point having Coordinates of X = 1,952,297.87 and Y = 651,574.22; thence North 69 degrees 20 minutes 28 seconds East 8,813.17 feet to a point having Coordinates of X = 1,960,544.33 and Y = 654,683.54; thence North 72 degrees 28 minutes 12 seconds East 1,772.38 feet to a point having Coordinates of X = 1,962,234.40 and Y = 655,217.39; thence South 36 degrees 19 minutes 03 seconds East 15,948.31 feet to a point having Coordinates of X = 1,971,679.93 and Y = 642,367.08; thence South 65 degrees 33 minutes 20 seconds West 10,066.46 feet to a point having Coordinates of X = 1,962,515.80 and Y = 638,201.47; thence North 37 degrees 22 minutes 59 seconds West 16,829.63 feet to the point of beginning, **LESS AND EXCEPT** any right, title, and interest in lands owned by and not under lease from the State of Louisiana, on behalf of the Iberville Parish School Board, situated in Section 16, Township 7 South, Range 10 East, Iberville Parish, Louisiana, contained within the above described tract, containing approximately **47 acres**, all as more particularly outlined on a plat on file in the Office of Mineral Resources, Department of Natural Resources. All bearings, distances and coordinates are based on Louisiana Coordinate System of 1927, (North or South Zone), where applicable.

NOTE: The above description of the Tract nominated for lease has been provided and corrected, where required, exclusively by the nomination party. Any mineral lease selected from this Tract and awarded by the Louisiana State Mineral and Energy Board shall be without warranty of any kind, either express, implied, or statutory, including, but not limited to, the implied warranties of merchantability and fitness for a particular purpose. Should the mineral lease awarded by the Louisiana State Mineral and Energy Board be subsequently modified, cancelled or abrogated due to the existence of conflicting leases, operating agreements, private claims or other future obligations or conditions which may affect all or any portion of the leased Tract, it shall not relieve the Lessee of the obligation to pay any bonus due thereon to the Louisiana State Mineral and Energy Board, nor shall the Louisiana State Mineral and Energy Board be obligated to refund any consideration paid by the Lessor prior to such modification, cancellation, or abrogation, including, but not limited to, bonuses, rentals and royalties.

Applicant: THEOPHILUS OIL, GAS & LAND SERVICES, LLC

Bidder	Cash Payment	Price/Acre	Rental	Oil	Gas	Other

Legend

14040040



T7S - R10E

BAYOU GROSSE TETE

IBERVILLE

BAYOU GROSSE TETE

P.O.B.

T7S - R10E

T7S - R9E



TRACT 43846 - Iberville Parish, Louisiana

All of the lands now or formerly constituting the beds and bottoms of all water bodies of every nature and description as to which title is vested in the State of Louisiana, together with all islands arising therein and other lands formed by accretion or by reliction, where allowed by law, excepting tax adjudicated lands, and not presently under mineral lease on April 9, 2014, situated in Iberville Parish, Louisiana, and more particularly described as follows: Beginning at a point having Coordinates of X = 1,962,515.80 and Y = 638,201.47; thence North 65 degrees 33 minutes 20 seconds East 10,066.46 feet to a point having Coordinates of X = 1,971,679.93 and Y = 642,367.08; thence South 25 degrees 37 minutes 26 seconds East 18,480.00 feet to a point having Coordinates of X = 1,979,671.84 and Y = 625,704.56; thence South 68 degrees 18 minutes 52 seconds West 9,081.86 feet to a point having Coordinates of X = 1,971,232.75 and Y = 622,348.69; thence North 28 degrees 48 minutes 18 seconds West 18,091.32 feet to the point of beginning, **LESS AND EXCEPT** any right, title, and interest in lands owned by and not under lease from the State of Louisiana, on behalf of the Iberville Parish School Board, situated in Section 16, Township 8 South, Range 10 East, Iberville Parish, Louisiana, contained within the above described tract, containing approximately **47 acres**, all as more particularly outlined on a plat on file in the Office of Mineral Resources, Department of Natural Resources. All bearings, distances and coordinates are based on Louisiana Coordinate System of 1927, (North or South Zone), where applicable.

NOTE: The above description of the Tract nominated for lease has been provided and corrected, where required, exclusively by the nomination party. Any mineral lease selected from this Tract and awarded by the Louisiana State Mineral and Energy Board shall be without warranty of any kind, either express, implied, or statutory, including, but not limited to, the implied warranties of merchantability and fitness for a particular purpose. Should the mineral lease awarded by the Louisiana State Mineral and Energy Board be subsequently modified, cancelled or abrogated due to the existence of conflicting leases, operating agreements, private claims or other future obligations or conditions which may affect all or any portion of the leased Tract, it shall not relieve the Lessee of the obligation to pay any bonus due thereon to the Louisiana State Mineral and Energy Board, nor shall the Louisiana State Mineral and Energy Board be obligated to refund any consideration paid by the Lessor prior to such modification, cancellation, or abrogation, including, but not limited to, bonuses, rentals and royalties.

Applicant: THEOPHILUS OIL, GAS & LAND SERVICES, LLC

Bidder	Cash Payment	Price/Acre	Rental	Oil	Gas	Other

Legend

14040041



T7S - R11E

BAYOU GROSSE TETE

IBERVILLE

T8S - R10E

P.O.B.

