

TRACT 43847 - Iberville Parish, Louisiana

All of the lands now or formerly constituting the beds and bottoms of all water bodies of every nature and description as to which title is vested in the State of Louisiana, together with all islands arising therein and other lands formed by accretion or by reliction, where allowed by law, excepting tax adjudicated lands, and not presently under mineral lease on April 9, 2014, situated in Iberville Parish, Louisiana, and more particularly described as follows: Beginning at a point having Coordinates of X = 1,935,167.49 and Y = 637,900.00; thence North 77 degrees 25 minutes 47 seconds East 14,273.26 feet to a point having Coordinates of X = 1,949,098.61 and Y = 641,006.42; thence South 17 degrees 53 minutes 38 seconds East 14,522.16 feet to a point having Coordinates of X = 1,953,560.64 and Y = 627,186.75; thence South 72 degrees 21 minutes 32 seconds West 15,028.50 feet to a point having Coordinates of X = 1,939,238.88 and Y = 622,632.29; thence North 14 degrees 55 minutes 53 seconds West 15,801.24 feet to the point of beginning, **LESS AND EXCEPT** that portion, if any, of the above described tract that may lie inside of the boundary of the Atchafalaya Basin, (This tract includes only waterbottoms claimed and owned by the state and specifically excludes any land which the state or Wildlife and Fisheries may claim or own and to which the mineral rights are vested in them), containing approximately **13 acres**, all as more particularly outlined on a plat on file in the Office of Mineral Resources, Department of Natural Resources. All bearings, distances and coordinates are based on Louisiana Coordinate System of 1927, (North or South Zone), where applicable.

NOTE: The above description of the Tract nominated for lease has been provided and corrected, where required, exclusively by the nomination party. Any mineral lease selected from this Tract and awarded by the Louisiana State Mineral and Energy Board shall be without warranty of any kind, either express, implied, or statutory, including, but not limited to, the implied warranties of merchantability and fitness for a particular purpose. Should the mineral lease awarded by the Louisiana State Mineral and Energy Board be subsequently modified, cancelled or abrogated due to the existence of conflicting leases, operating agreements, private claims or other future obligations or conditions which may affect all or any portion of the leased Tract, it shall not relieve the Lessee of the obligation to pay any bonus due thereon to the Louisiana State Mineral and Energy Board, nor shall the Louisiana State Mineral and Energy Board be obligated to refund any consideration paid by the Lessor prior to such modification, cancellation, or abrogation, including, but not limited to, bonuses, rentals and royalties.

Bidder	Cash Payment	Price/Acre	Rental	Oil	Gas	Other

Applicant: THEOPHILUS OIL, GAS & LAND SERVICES, LLC

Legend



T7S - R10E

IBERVILLE

BAYOU MARINGOUIN

3,000 Feet



P.O.B.

SHERBURNE WMA

T8S - R9E

TRACT 43848 - Beauregard and Calcasieu Parishes, Louisiana

All of the lands now or formerly constituting the beds and bottoms of all water bodies of every nature and description as to which title is vested in the State of Louisiana, together with all islands arising therein and other lands formed by accretion or by reliction, where allowed by law, excepting tax adjudicated lands, and not presently under mineral lease on April 9, 2014, situated in Beauregard and Calcasieu Parishes, Louisiana, and more particularly described as follows: Beginning at a point having Coordinates of X = 1,363,300.00 and Y = 642,400.00; thence East 12,000.00 feet to point having Coordinates of X = 1,375,300.00 and Y = 642,400.00; thence South 11,500.00 feet to a point having Coordinates of X = 1,375,300.00 and Y = 630,900.00; thence West 12,000.00 feet to a point having Coordinates of X = 1,363,300.00 and Y = 630,900.00; thence North 11,500.00 feet to the point of beginning, containing approximately **13 acres**, all as more particularly outlined on a plat on file in the Office of Mineral Resources, Department of Natural Resources. All bearings, distances and coordinates are based on Louisiana Coordinate System of 1927, (North or South Zone), where applicable.

NOTE: The above description of the Tract nominated for lease has been provided and corrected, where required, exclusively by the nomination party. Any mineral lease selected from this Tract and awarded by the Louisiana State Mineral and Energy Board shall be without warranty of any kind, either express, implied, or statutory, including, but not limited to, the implied warranties of merchantability and fitness for a particular purpose. Should the mineral lease awarded by the Louisiana State Mineral and Energy Board be subsequently modified, cancelled or abrogated due to the existence of conflicting leases, operating agreements, private claims or other future obligations or conditions which may affect all or any portion of the leased Tract, it shall not relieve the Lessee of the obligation to pay any bonus due thereon to the Louisiana State Mineral and Energy Board, nor shall the Louisiana State Mineral and Energy Board be obligated to refund any consideration paid by the Lessor prior to such modification, cancellation, or abrogation, including, but not limited to, bonuses, rentals and royalties.

NOTE: A portion of this tract is located on or adjacent to a Louisiana designated Natural and Scenic River. The applicant must obtain authorization from the Louisiana Department of Wildlife and Fisheries, Scenic Rivers Program prior to initiating any activities within or adjacent to the river, including, but not limited to, crossings by roads and pipelines, well sites, production facilities and water withdrawals.

Applicant: STATE REGISTERED APPLICANT

Bidder	Cash Payment	Price/Acre	Rental	Oil	Gas	Other

Legend



14040001

Counties



0 3,000 Feet

BEAUREGARD

T7S - R9W

P.O.B.

CALCASIEU

BECKWITH CREEK

T8S - R10W

TRACT 43849 - Calcasieu Parish, Louisiana

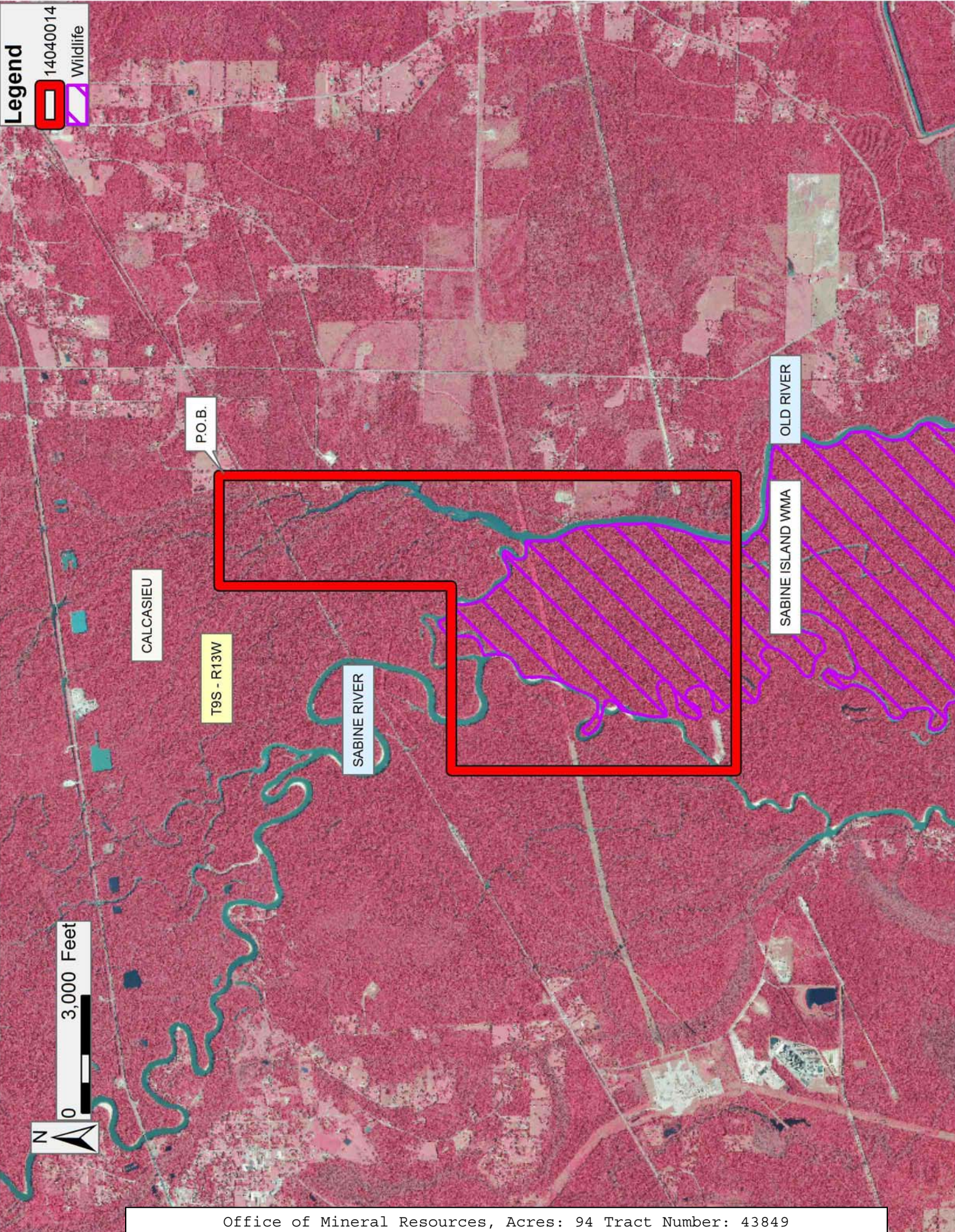
All of the lands now or formerly constituting the beds and bottoms of all water bodies of every nature and description the title of which vests in the State of Louisiana, together with all islands arising therein and other lands formed by accretion or by reliction, where allowed by law, excepting tax adjudicated lands, and not presently under mineral lease on April 9, 2014, situated in Calcasieu Parish, Louisiana, and more particularly described as follows: Beginning at a point having Coordinates of X = 1,256,427.81 and Y = 601,350.04; thence South 13,238.34 feet to a point having Coordinates of X = 1,256,427.81 and Y = 588,111.70; thence West 7,559.74 feet to a point having Coordinates of X = 1,248,868.07 and Y = 588,111.70; thence North 7,288.30 feet to a point having Coordinates of X = 1,248,868.07 and Y = 595,400.00; thence East 4,731.93 feet to a point having Coordinates of X = 1,253,600.00 and Y = 595,400.00; thence North 5,950.04 feet to a point having Coordinates of X = 1,253,600.00 and Y = 601,350.04; thence East 2,827.81 feet to the point of beginning, **LESS AND EXCEPT** all that portion, if any, that lies within the Sabine Island Wildlife Management Area, and **LESS AND EXCEPT** any right, title, and interest in lands owned by and not under lease from the State of Louisiana, on behalf of the Calcasieu Parish School Board, situated in Section 16, Township 09 South, Range 13 West, Calcasieu Parish, Louisiana, contained within the above described tract, containing approximately **94 acres**, **LESS AND EXCEPT** that portion thereof, if any, located West of the boundary line between the States of Texas and Louisiana as determined by the report of the Special Master and adjudicated by the Supreme Court of the United States in litigation styled **Texas v. Louisiana, et al No. 36 Original**, or as otherwise approved by said court, all as more particularly outlined on a plat on file in the Office of Mineral Resources, Department of Natural Resources. All bearings, distances and coordinates are based on Louisiana Coordinate System of 1927, (North or South Zone), where applicable.

NOTE: The above description of the Tract nominated for lease has been provided and corrected, where required, exclusively by the nomination party. Any mineral lease selected from this Tract and awarded by the Louisiana State Mineral and Energy Board shall be without warranty of any kind, either express, implied, or statutory, including, but not limited to, the implied warranties of merchantability and fitness for a particular purpose. Should the mineral lease awarded by the Louisiana State Mineral and Energy Board be subsequently modified, cancelled or abrogated due to the existence of conflicting leases, operating agreements, private claims or other future obligations or conditions which may affect all or any portion of the leased Tract, it shall not relieve the Lessee of the obligation to pay any bonus due thereon to the Louisiana State Mineral and Energy Board, nor shall the Louisiana State Mineral and Energy Board be obligated to refund any consideration paid by the Lessor prior to such modification, cancellation, or abrogation, including, but not limited to, bonuses, rentals and royalties.

Applicant: BASIN PROPERTIES, INC.

Bidder	Cash Payment	Price/Acre	Rental	Oil	Gas	Other

Legend



TRACT 43850 - St. James Parish, Louisiana

All of the lands now or formerly constituting the beds and bottoms of all water bodies of every nature and description as to which title is vested in the State of Louisiana, together with all islands arising therein and other lands formed by accretion or by reliction, where allowed by law, excepting tax adjudicated lands, and not presently under mineral lease on April 9, 2014, situated in St. James Parish, Louisiana, and more particularly described as follows: Beginning at a point having Coordinates of X = 2,166,038.26 and Y = 492,700.00; thence East 18,480.00 feet to the Northwest corner of State Lease No. 21242 having Coordinates of X = 2,184,518.26 and Y = 492,700.00; thence South 06 degrees 54 minutes 58 seconds East 4,331.52 feet along the Western boundary of said State Lease No. 21242 to its Southwest corner having Coordinates of X = 2,185,039.84 and Y = 488,400.00; thence South 10,751.02 feet to a point having Coordinates of X = 2,185,039.84 and Y = 477,648.98; thence West 18,480.00 feet to a point having Coordinates of X = 2,166,559.84 and Y = 477,648.98; thence North 01 degrees 59 minutes 05 seconds West 15,060.06 feet to the point of beginning, containing approximately **1,460 acres**, all as more particularly outlined on a plat on file in the Office of Mineral Resources, Department of Natural Resources. All bearings, distances and coordinates are based on Louisiana Coordinate System of 1927, (North or South Zone), where applicable.

NOTE: The above description of the Tract nominated for lease has been provided and corrected, where required, exclusively by the nomination party. Any mineral lease selected from this Tract and awarded by the Louisiana State Mineral and Energy Board shall be without warranty of any kind, either express, implied, or statutory, including, but not limited to, the implied warranties of merchantability and fitness for a particular purpose. Should the mineral lease awarded by the Louisiana State Mineral and Energy Board be subsequently modified, cancelled or abrogated due to the existence of conflicting leases, operating agreements, private claims or other future obligations or conditions which may affect all or any portion of the leased Tract, it shall not relieve the Lessee of the obligation to pay any bonus due thereon to the Louisiana State Mineral and Energy Board, nor shall the Louisiana State Mineral and Energy Board be obligated to refund any consideration paid by the Lessor prior to such modification, cancellation, or abrogation, including, but not limited to, bonuses, rentals and royalties.

NOTE: The State of Louisiana does hereby reserve, and this lease shall be subject to, the imprescriptible right of surface use in the nature of a servitude in favor of the Department of Natural Resources, including its Offices and Commissions, for the sole purpose of implementing, constructing, servicing and maintaining approved coastal zone management and/or restoration projects. Utilization of any and all rights derived under this lease by the mineral lessee, its agents, successors or assigns, shall not interfere with nor hinder the reasonable surface use by the

Department of Natural Resources, its Offices or Commissions, as herein above reserved.

Applicant: CHARLESTON ENERGY, INC.

Bidder	Cash Payment	Price/Acre	Rental	Oil	Gas	Other

Legend

14040015



Active_Leases

ST JAMES

SL 21242

T12S - R17E

T13S - R17E

T13S - R16E

0 3,000 Feet

P.O.B.

MISSISSIPPI RIVER

TRACT 43851 - Assumption and Iberia Parishes, Louisiana

All of the lands now or formerly constituting the beds and bottoms of all water bodies of every nature and description as to which title is vested in the State of Louisiana, together with all islands arising therein and other lands formed by accretion or by reliction, where allowed by law, excepting tax adjudicated lands, and not presently under mineral lease on April 9, 2014, situated in Assumption and Iberia Parishes, Louisiana, and more particularly described as follows: Beginning at a point having Coordinates of X = 2,029,912.33 and Y = 491,700.00; thence South 15,840.00 feet to the Northeast corner of State Lease No. 20926, also being the Northwest corner of State Lease No. 20927, having Coordinates of X = 2,029,912.33 and Y = 475,860.00; thence West approximately 7,750 feet along the North line of said State Lease No. 20926 to its Northwest corner, also being the Northeast corner of State Lease No. 20925, also being a point on the East boundary of the Atchafalaya Basin having a Coordinate of Y = 475,860.00; thence Northerly along the East boundary of said Atchafalaya Basin to the point of intersection with an East/West line having a Coordinate of Y = 491,700.00; thence East approximately 5,612 feet to the point of beginning, **LESS AND EXCEPT** any right, title, and interest in lands owned by and not under lease from the State of Louisiana, on behalf of the Iberia Parish School Board, situated in Section 16, Township 12 South, Range 12 East, Iberia Parish, Louisiana, contained within the above described tract and **LESS AND EXCEPT** that portion, if any, of the above described tract that may lie inside of the boundary of the Atchafalaya Basin, containing approximately **126 acres**, all as more particularly outlined on a plat on file in the Office of Mineral Resources, Department of Natural Resources. All bearings, distances and coordinates are based on Louisiana Coordinate System of 1927, (North or South Zone), where applicable.

NOTE: The above description of the Tract nominated for lease has been provided and corrected, where required, exclusively by the nomination party. Any mineral lease selected from this Tract and awarded by the Louisiana State Mineral and Energy Board shall be without warranty of any kind, either express, implied, or statutory, including, but not limited to, the implied warranties of merchantability and fitness for a particular purpose. Should the mineral lease awarded by the Louisiana State Mineral and Energy Board be subsequently modified, cancelled or abrogated due to the existence of conflicting leases, operating agreements, private claims or other future obligations or conditions which may affect all or any portion of the leased Tract, it shall not relieve the Lessee of the obligation to pay any bonus due thereon to the Louisiana State Mineral and Energy Board, nor shall the Louisiana State Mineral and Energy Board be obligated to refund any consideration paid by the Lessor prior to such modification, cancellation, or abrogation, including, but not limited to, bonuses, rentals and royalties.

NOTE: The State of Louisiana does hereby reserve, and this lease shall be subject to, the imprescriptible right of surface use in the nature of a

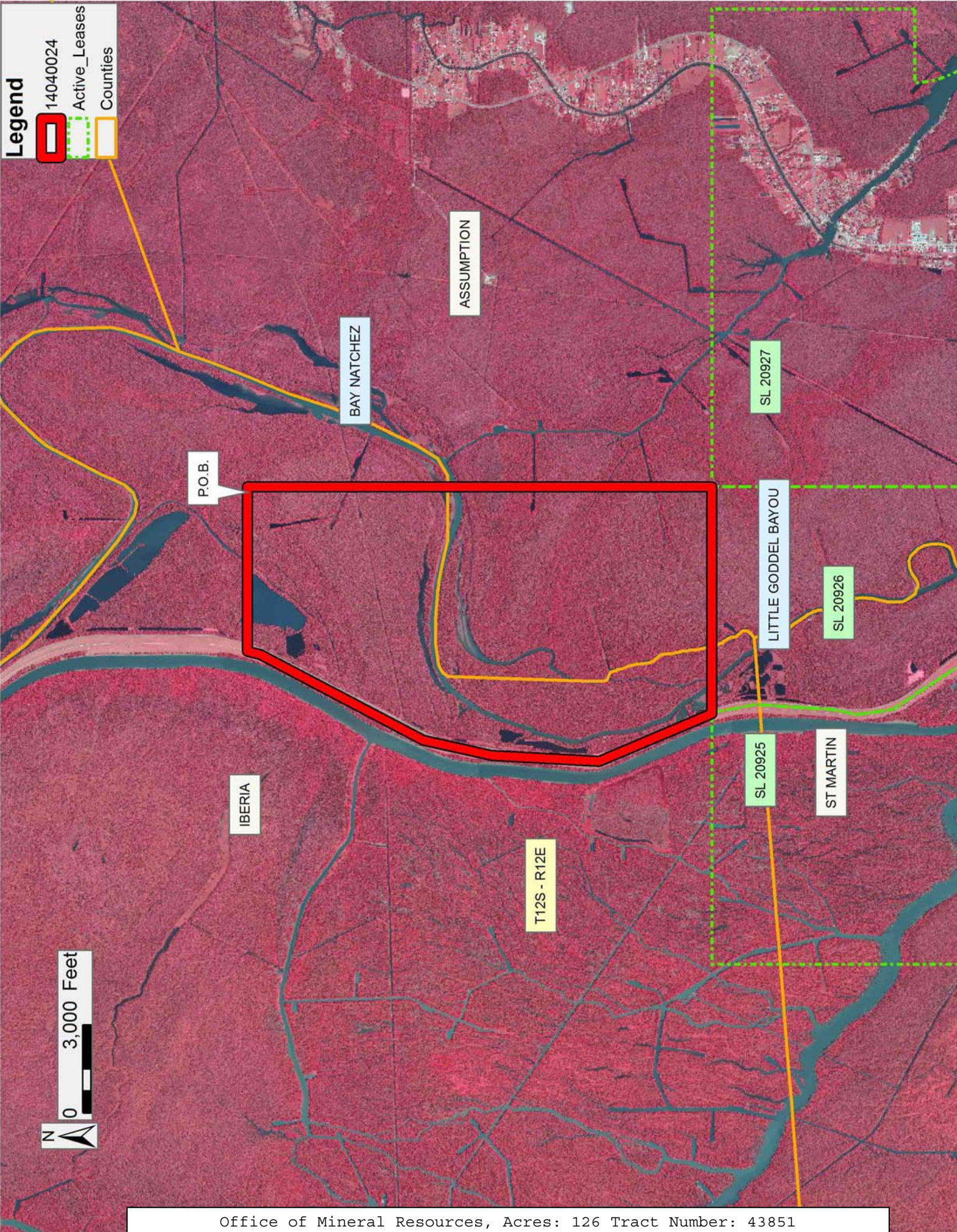
servitude in favor of the Department of Natural Resources, including its Offices and Commissions, for the sole purpose of implementing, constructing, servicing and maintaining approved coastal zone management and/or restoration projects. Utilization of any and all rights derived under this lease by the mineral lessee, its agents, successors or assigns, shall not interfere with nor hinder the reasonable surface use by the Department of Natural Resources, its Offices or Commissions, as herein above reserved.

Applicant: THEOPHILUS OIL, GAS & LAND SERVICES, LLC

Bidder	Cash Payment	Price/Acre	Rental	Oil	Gas	Other

Legend

- 14040024
- Active_Leases
- Counties



TRACT 43852 - Assumption and Iberia Parishes, Louisiana

All of the lands now or formerly constituting the beds and bottoms of all water bodies of every nature and description as to which title is vested in the State of Louisiana, together with all islands arising therein and other lands formed by accretion or by reliction, where allowed by law, excepting tax adjudicated lands, and not presently under mineral lease on April 9, 2014, situated in Assumption and Iberia Parishes, Louisiana, and more particularly described as follows: Beginning at a point having Coordinates of X = 2,029,912.33 and Y = 491,700.00; thence East 16,302.66 feet to a point having Coordinates of X = 2,046,214.99 and Y = 491,700.00; thence South 15,840.00 feet to the Northeast corner of State Lease No. 20927, having Coordinates of X = 2,046,214.99 and Y = 475,860.00; thence West 16,302.66 feet along the North boundary of said State Lease No. 20927 to its Northwest corner, also being the Northeast corner of State Lease No. 20926, having Coordinates of X = 2,029,912.33 and Y = 475,860.00; thence North 15,840.00 feet to the point of beginning, (This tract includes only waterbottoms claimed and owned by the state and specifically excludes any land which the state may claim or own and to which the mineral rights are vested in the state), containing approximately **140 acres**, all as more particularly outlined on a plat on file in the Office of Mineral Resources, Department of Natural Resources. All bearings, distances and coordinates are based on Louisiana Coordinate System of 1927, (North or South Zone), where applicable.

NOTE: The above description of the Tract nominated for lease has been provided and corrected, where required, exclusively by the nomination party. Any mineral lease selected from this Tract and awarded by the Louisiana State Mineral and Energy Board shall be without warranty of any kind, either express, implied, or statutory, including, but not limited to, the implied warranties of merchantability and fitness for a particular purpose. Should the mineral lease awarded by the Louisiana State Mineral and Energy Board be subsequently modified, cancelled or abrogated due to the existence of conflicting leases, operating agreements, private claims or other future obligations or conditions which may affect all or any portion of the leased Tract, it shall not relieve the Lessee of the obligation to pay any bonus due thereon to the Louisiana State Mineral and Energy Board, nor shall the Louisiana State Mineral and Energy Board be obligated to refund any consideration paid by the Lessor prior to such modification, cancellation, or abrogation, including, but not limited to, bonuses, rentals and royalties.

NOTE: The State of Louisiana does hereby reserve, and this lease shall be subject to, the imprescriptible right of surface use in the nature of a servitude in favor of the Department of Natural Resources, including its Offices and Commissions, for the sole purpose of implementing, constructing, servicing and maintaining approved coastal zone management and/or restoration projects. Utilization of any and all rights derived under this lease by the mineral lessee, its agents, successors or assigns, shall not interfere with nor hinder the reasonable surface use by the

Department of Natural Resources, its Offices or Commissions, as herein above reserved.

Applicant: THEOPHILUS OIL, GAS & LAND SERVICES, LLC

Bidder	Cash Payment	Price/Acre	Rental	Oil	Gas	Other

Legend

14040025



Active_Leases

Counties



0 3,000 Feet



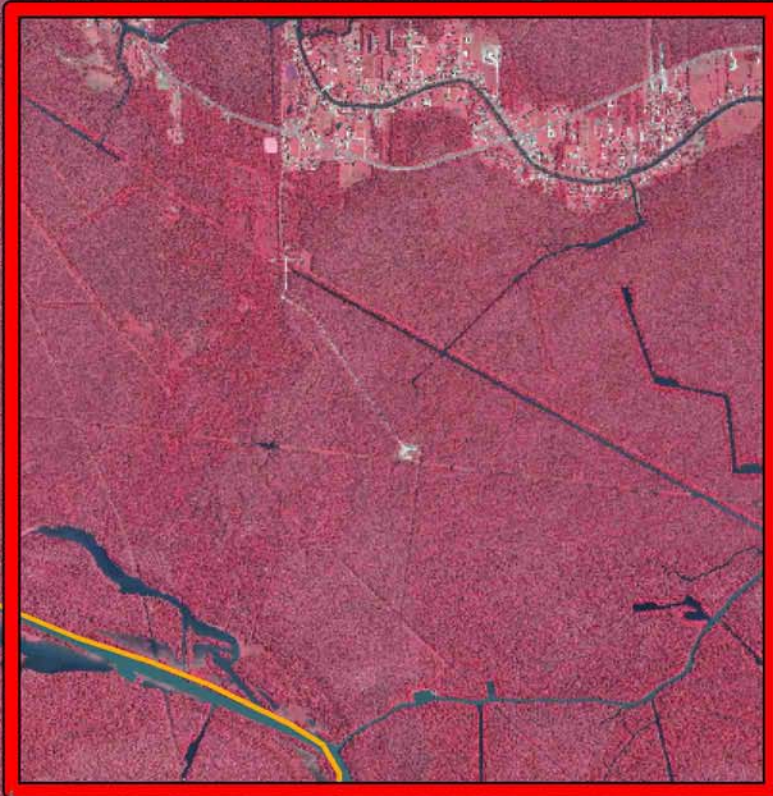
IBERIA

P.O.B.

BAY NATCHEZ

ASSUMPTION

T12S - R13E



BAYOU GROSBEC

SL 20927

SL 20926

T13S - R12E

TRACT 43853 - Assumption Parish, Louisiana

All of the lands now or formerly constituting the beds and bottoms of all water bodies of every nature and description as to which title is vested in the State of Louisiana, together with all islands arising therein and other lands formed by accretion or by reliction, where allowed by law, excepting tax adjudicated lands, and not presently under mineral lease on April 9, 2014, situated in Assumption Parish, Louisiana, and more particularly described as follows: Beginning at a point having Coordinates of X = 2,046,214.99 and Y = 491,700.00; thence East 15,417.27 feet to a point on the West boundary of State Lease No. 20451, having Coordinates of X = 2,061,632.26 and Y = 491,700.00; thence along the boundary of said State Lease No. 20451, the following courses and distances: South 00 degrees 56 minutes 38 seconds East 4,920.38 feet to a point having Coordinates of X = 2,061,713.31 and Y = 486,780.29 and North 89 degrees 20 minutes 10 seconds East 2,981.88 feet to a point having Coordinates of X = 2,064,694.99 and Y = 486,814.84; thence South 10,954.84 feet to a point having Coordinates of X = 2,064,694.99 and Y = 475,860.00; thence West 18,480.00 feet to the Northeast corner of State Lease No. 20927, having Coordinates of X = 2,046,214.99 and Y = 475,860.00; thence North 15,840.00 feet to the point of beginning, (This tract includes only waterbottoms claimed and owned by the state and specifically excludes any land which the state may claim or own and to which the mineral rights are vested in the state), containing approximately **97 acres**, all as more particularly outlined on a plat on file in the Office of Mineral Resources, Department of Natural Resources. All bearings, distances and coordinates are based on Louisiana Coordinate System of 1927, (North or South Zone), where applicable.

NOTE: The above description of the Tract nominated for lease has been provided and corrected, where required, exclusively by the nomination party. Any mineral lease selected from this Tract and awarded by the Louisiana State Mineral and Energy Board shall be without warranty of any kind, either express, implied, or statutory, including, but not limited to, the implied warranties of merchantability and fitness for a particular purpose. Should the mineral lease awarded by the Louisiana State Mineral and Energy Board be subsequently modified, cancelled or abrogated due to the existence of conflicting leases, operating agreements, private claims or other future obligations or conditions which may affect all or any portion of the leased Tract, it shall not relieve the Lessee of the obligation to pay any bonus due thereon to the Louisiana State Mineral and Energy Board, nor shall the Louisiana State Mineral and Energy Board be obligated to refund any consideration paid by the Lessor prior to such modification, cancellation, or abrogation, including, but not limited to, bonuses, rentals and royalties.

NOTE: The State of Louisiana does hereby reserve, and this lease shall be subject to, the imprescriptible right of surface use in the nature of a servitude in favor of the Department of Natural Resources, including its Offices and Commissions, for the sole purpose of implementing,

constructing, servicing and maintaining approved coastal zone management and/or restoration projects. Utilization of any and all rights derived under this lease by the mineral lessee, its agents, successors or assigns, shall not interfere with nor hinder the reasonable surface use by the Department of Natural Resources, its Offices or Commissions, as herein above reserved.

Applicant: THEOPHILUS OIL, GAS & LAND SERVICES, LLC

Bidder	Cash Payment	Price/Acre	Rental	Oil	Gas	Other

Legend

14040026

Active_Leases



SL 20451

ASSUMPTION

BAYOU CORNE

T12S - R13E

3,000 Feet



P.O.B.

T12S - R12E

SL 20927

LITTLE GRAND BAYOU

GRAND BAYOU

TRACT 43854 - Iberia Parish, Louisiana

All of the lands now or formerly constituting the beds and bottoms of all water bodies of every nature and description as to which title is vested in the State of Louisiana, together with all islands arising therein and other lands formed by accretion or by reliction, where allowed by law, excepting tax adjudicated lands, and not presently under mineral lease on April 9, 2014, situated in Iberia Parish, Louisiana, and more particularly described as follows: Beginning at a point having Coordinates of X = 1,997,307.00 and Y = 491,700.00; thence East 16,302.66 feet to a point having Coordinates of X = 2,013,609.66 and Y = 491,700.00; thence South 15,840.00 feet to the Northeast corner of State Lease No. 20924, also being the Northwest corner of State Lease No. 20925, having Coordinates of X = 2,013,609.66 and Y = 475,860.00; thence West along the North boundary of said State Lease No. 20924, approximately 3,810 feet to a point located on the East boundary of State Lease No. 2655 having a Coordinate of Y = 475,860.00; thence along the East and North boundary of said State Lease No. 2655 the following courses and distances: Northerly approximately 3,813 feet to a corner, Westerly approximately 1,466 feet to a corner, Northerly approximately 1,439 feet to a corner and Westerly approximately 2,861 to a point being the Southernmost Southeast corner of State Lease No 18258, as amended; thence along the boundary of said State Lease No. 18258, as amended, the following: North 00 degrees 43 minutes 31 seconds West approximately 378 feet to a point having Coordinates of X = 2,005,340.54 and Y = 481,439.54, South 85 degrees 07 minutes 06 seconds East 387.45 feet to a corner having Coordinates of X = 2,005,726.59 and Y = 481,406.57, Easterly along an arc having a radius of 3,000.00 feet and a center having Coordinates of X = 2,006,035.74 and Y = 484,390.60 to a corner having Coordinates of X = 2,006,713.67 and Y = 481,468.20, North 74 degrees 18 minutes 59 seconds East 1,166.15 feet to a corner having Coordinates of X = 2,007,836.41 and Y = 481,783.44, Easterly along an arc having a radius of 1,525.00 feet and a center having Coordinates of X = 2,007,921.13 and Y = 483,306.09 to a corner having Coordinates of X = 2,008,329.79 and Y = 481,836.86, South 89 degrees 15 minutes 00 seconds East 507.30 feet to a corner, North 00 degrees 22 minutes 15 seconds West 2,789.04 feet to a corner having Coordinates of X = 2,008,819.00 and Y = 484,619.20, North 88 degrees 50 minutes 53 seconds East 107.34 feet to a corner, North 2,773.71 feet to a corner, South 83 degrees 36 minutes 34 seconds West 3,241.30 feet to a corner, North 77 degrees 28 minutes 08 seconds West 2,091.13 feet to a corner, South 26 degrees 26 minutes 54 seconds East 267.36 feet to a corner, South 15 degrees 26 minutes 41 seconds East 229.94 feet to a corner, South 09 degrees 44 minutes 42 seconds East 459.41 feet to a corner, South 14 degrees 43 minutes 35 seconds East 132.31 feet to a corner, South 10 degrees 28 minutes 00 seconds East 312.58 feet to a corner, South 06 degrees 42 minutes 30 seconds East 490.55 feet to a corner, South 01 degrees 34 minutes 11 seconds West 395.48 feet, South 22 degrees 39 minutes 14 seconds West 261.76 feet to a corner, South 43 degrees 58 minutes 37 seconds West 269.29 feet to a corner having Coordinates of X = 2,003,771.00 and Y = 484,821.00 and West 210.26 to a point having Coordinates of X =

2,003,560.74 and Y = 484,821.00; thence Westerly approximately 396 feet; thence Southwesterly approximately 2,887 feet; thence Northwesterly approximately 261 feet; thence Northeasterly approximately 2,863 feet to a corner; thence Northeasterly approximately 832 feet to a corner having a Coordinate of X = 2,003,560.74; thence North approximately 728 feet to a corner having a Coordinate of X = 2,003,560.74; thence Westerly approximately 543 feet to a corner; thence Northerly approximately 1,487 feet to a corner having a Coordinate of Y = 487,833.27; thence West approximately 1,211 feet to a corner having a Coordinate of Y = 487,833.27; thence Southwesterly approximately 3,300 feet to a corner having a Coordinate of X = 1,998,660.74; thence South approximately 1,257 feet to a point having a Coordinate of X = 1,998,660.74; thence South approximately 557 feet to a point having Coordinates of X = 1,998,660.74 and Y = 484,996.54; thence South 89 degrees 36 minutes 02 seconds West 1,353.77 feet to a point having Coordinates of X = 1,997,307.00 and Y = 484,987.10; thence North 6,712.90 feet to the point of beginning, **LESS AND EXCEPT** any portions of State Lease No. 2655 that may lie within the above described tract, containing approximately **66 acres**, all as more particularly outlined on a plat on file in the Office of Mineral Resources, Department of Natural Resources. All bearings, distances and coordinates are based on Louisiana Coordinate System of 1927, (North or South Zone), where applicable.

NOTE: The above description of the Tract nominated for lease has been provided and corrected, where required, exclusively by the nomination party. Any mineral lease selected from this Tract and awarded by the Louisiana State Mineral and Energy Board shall be without warranty of any kind, either express, implied, or statutory, including, but not limited to, the implied warranties of merchantability and fitness for a particular purpose. Should the mineral lease awarded by the Louisiana State Mineral and Energy Board be subsequently modified, cancelled or abrogated due to the existence of conflicting leases, operating agreements, private claims or other future obligations or conditions which may affect all or any portion of the leased Tract, it shall not relieve the Lessee of the obligation to pay any bonus due thereon to the Louisiana State Mineral and Energy Board, nor shall the Louisiana State Mineral and Energy Board be obligated to refund any consideration paid by the Lessor prior to such modification, cancellation, or abrogation, including, but not limited to, bonuses, rentals and royalties.

NOTE: This acreage is entirely within the boundary of the Atchafalaya Basin Legal Area.

NOTE: The State of Louisiana does hereby reserve, and this lease shall be subject to, the imprescriptible right of surface use in the nature of a servitude in favor of the Department of Natural Resources, including its Offices and Commissions, for the sole purpose of implementing, constructing, servicing and maintaining approved coastal zone management and/or restoration projects. Utilization of any and all rights derived

under this lease by the mineral lessee, its agents, successors or assigns, shall not interfere with nor hinder the reasonable surface use by the Department of Natural Resources, its Offices or Commissions, as herein above reserved.

Applicant: THEOPHILUS OIL, GAS & LAND SERVICES, LLC

Bidder	Cash Payment	Price/Acre	Rental	Oil	Gas	Other

Legend

14040022

Active_Leases



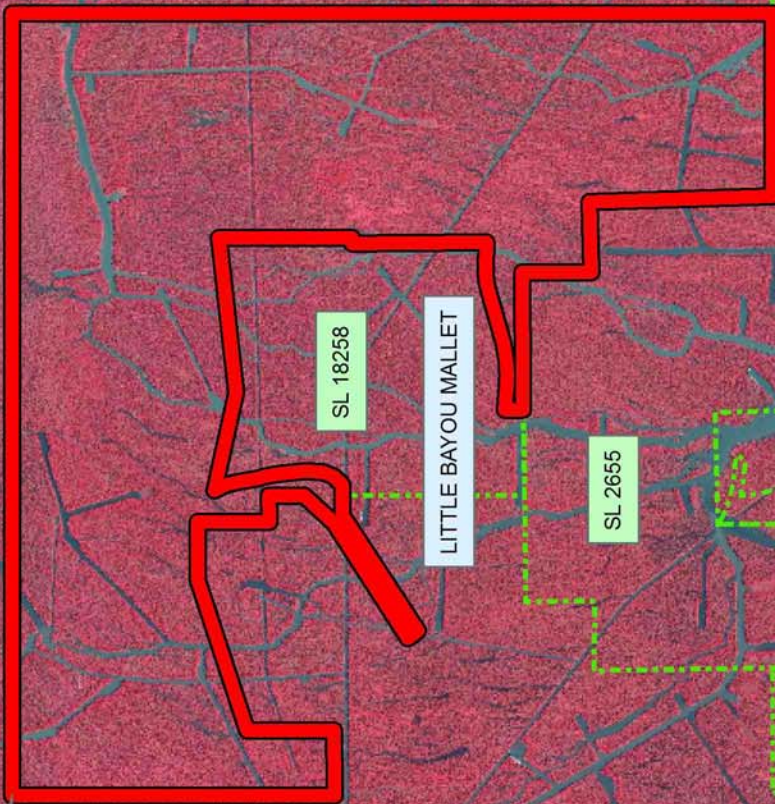
IBERIA

T12S - R11E

T12S - R12E

P.O.B.

BAYOU POSTILLION



SL 18258

LITTLE BAYOU MALLET

SL 2655

SL 20925

OLD RIVER

T13S - R11E

SL 20924

TRACT 43855 - Iberia Parish, Louisiana

All of the lands now or formerly constituting the beds and bottoms of all water bodies of every nature and description as to which title is vested in the State of Louisiana, together with all islands arising therein and other lands formed by accretion or by reliction, where allowed by law, excepting tax adjudicated lands, and not presently under mineral lease on April 9, 2014, situated in Iberia Parish, Louisiana, and more particularly described as follows: Beginning at a point having Coordinates of X = 2,013,609.66 and Y = 491,700.00; thence East approximately 10,690 feet to a point on the East boundary of the Atchafalaya Basin having a Coordinate of Y = 491,700.00; thence Southerly along the East boundary of said Atchafalaya Basin to the point of intersection with an East/West line, also being the Northeast corner of State Lease No. 20925, also being the Northwest corner of State Lease No. 20926, having a Coordinate of Y = 475,860.00; thence West approximately 8,553 feet along the Northern boundary of said State Lease No. 20925 to its Northwest Corner, also being the Northeast corner of State Lease No. 20924, having Coordinates of X = 2,013,609.66 and Y = 475,860.00; thence North 15,840.00 feet to the point of beginning, **LESS AND EXCEPT** any right, title, and interest in lands owned by and not under lease from the State of Louisiana, on behalf of the Iberia Parish School Board, situated in Section 16, Township 12 South, Range 12 East, Iberia Parish, Louisiana, contained within the above described tract and **LESS AND EXCEPT** that portion, if any, of the above described tract that may lie outside of the boundary of the Atchafalaya Basin containing approximately **69 acres**, all as more particularly outlined on a plat on file in the Office of Mineral Resources, Department of Natural Resources. All bearings, distances and coordinates are based on Louisiana Coordinate System of 1927, (North or South Zone), where applicable.

NOTE: The above description of the Tract nominated for lease has been provided and corrected, where required, exclusively by the nomination party. Any mineral lease selected from this Tract and awarded by the Louisiana State Mineral and Energy Board shall be without warranty of any kind, either express, implied, or statutory, including, but not limited to, the implied warranties of merchantability and fitness for a particular purpose. Should the mineral lease awarded by the Louisiana State Mineral and Energy Board be subsequently modified, cancelled or abrogated due to the existence of conflicting leases, operating agreements, private claims or other future obligations or conditions which may affect all or any portion of the leased Tract, it shall not relieve the Lessee of the obligation to pay any bonus due thereon to the Louisiana State Mineral and Energy Board, nor shall the Louisiana State Mineral and Energy Board be obligated to refund any consideration paid by the Lessor prior to such modification, cancellation, or abrogation, including, but not limited to, bonuses, rentals and royalties.

NOTE: This acreage is entirely within the boundary of the Atchafalaya Basin Legal Area.

NOTE: The State of Louisiana does hereby reserve, and this lease shall be subject to, the imprescriptible right of surface use in the nature of a servitude in favor of the Department of Natural Resources, including its Offices and Commissions, for the sole purpose of implementing, constructing, servicing and maintaining approved coastal zone management and/or restoration projects. Utilization of any and all rights derived under this lease by the mineral lessee, its agents, successors or assigns, shall not interfere with nor hinder the reasonable surface use by the Department of Natural Resources, its Offices or Commissions, as herein above reserved.

Applicant: THEOPHILUS OIL, GAS & LAND SERVICES, LLC

Bidder	Cash Payment	Price/Acre	Rental	Oil	Gas	Other

Legend

14040023

Active_Leases



IBERIA

T12S - R12E

P.O.B.

BAYOU LATANIER

T12S - R11E

SL 20926

SL 20925

SL 20924

0 3,000 Feet



TRACT 43856 - Iberia Parish, Louisiana

All of the lands now or formerly constituting the beds and bottoms of all water bodies of every nature and description as to which title is vested in the State of Louisiana, together with all islands arising therein and other lands formed by accretion or by reliction, where allowed by law, excepting tax adjudicated lands, and not presently under mineral lease on April 9, 2014, situated in Iberia Parish, Louisiana, and more particularly described as follows: Beginning at a point having Coordinates of X = 1,997,307.00 and Y = 484,987.10; thence North 89 degrees 36 minutes 02 seconds East 1,353.77 feet to a point having Coordinates of X = 1,998,660.74 and Y = 484,996.54; thence North 1814.20 feet to a point having Coordinates of X = 1,998,660.74 and Y = 486,810.74; thence North 71 degrees 56 minutes 57 seconds East 3,299.95 feet to a point having Coordinates of X = 2,001,798.27 and Y = 487,833.27; thence East 1,211.21 feet to a point having Coordinates of X = 2,003,009.48 and Y = 487,833.27; thence South 00 degrees 18 minutes 57 seconds East 1,487.19 feet to a point having Coordinates of X = 2,003,017.68 and Y = 486,346.10; thence North 89 degrees 08 minutes 51 seconds East 543.12 feet to a point having Coordinates of X = 2,003,560.74 and Y = 486,354.18; thence South 728.29 feet to a point having Coordinates of X = 2,003,560.74 and Y = 485,625.89; thence South 42 degrees 25 minutes 48 seconds West 831.65 feet to a point having Coordinates of X = 2,002,999.64 and Y = 485,012.05; thence South 57 degrees 21 minutes 46 seconds West 2,863.31 feet to a point having Coordinates of X = 2,000,588.44 and Y = 483,467.82; thence South 35 degrees 22 minutes 01 seconds East 261.40 feet to a point having Coordinates of X = 2,000,739.74 and Y = 483,254.66; thence North 57 degrees 08 minutes 24 seconds East 2,886.80 feet to a point having Coordinates of X = 2,003,164.65 and Y = 484,821.00; thence East 396.09 feet to a point on the West boundary of State Lease No. 18258, as amended, having Coordinates of X = 2,003,560.74 and Y = 484,821.00; thence Southerly approximately 2,488 feet along said West boundary of said State Lease No. 18258 to a point on the North boundary of State Lease No. 2655; thence Westerly, Southerly, Westerly, and Southerly along the boundary of said State Lease No. 2655 to a point of intersection with the North line of State Lease No. 20924 having a Coordinate of Y = 475,860.00; thence West approximately 2,612 feet along the boundary of said State Lease No. 20924 to its Northwest corner, also being the Northeast corner of State Lease No. 21078, having Coordinates of X = 1,997,353.60 and Y = 475,860.00; thence North 3,791.10 feet to a point having Coordinates of X = 1,997,353.60 and Y = 479,651.10; thence North 00 degrees 30 minutes 01 seconds West 5,336.20 feet to the point of beginning, **LESS AND EXCEPT** that portion, if any, of said State Lease No. 2655 that may lie within the above described tract, containing approximately **22 acres**, all as more particularly outlined on a plat on file in the Office of Mineral Resources, Department of Natural Resources. All bearings, distances and coordinates are based on Louisiana Coordinate System of 1927, (North or South Zone), where applicable.

NOTE: The above description of the Tract nominated for lease has been provided and corrected, where required, exclusively by the nomination party. Any mineral lease selected from this Tract and awarded by the Louisiana State Mineral and Energy Board shall be without warranty of any kind, either express, implied, or statutory, including, but not limited to, the implied warranties of merchantability and fitness for a particular purpose. Should the mineral lease awarded by the Louisiana State Mineral and Energy Board be subsequently modified, cancelled or abrogated due to the existence of conflicting leases, operating agreements, private claims or other future obligations or conditions which may affect all or any portion of the leased Tract, it shall not relieve the Lessee of the obligation to pay any bonus due thereon to the Louisiana State Mineral and Energy Board, nor shall the Louisiana State Mineral and Energy Board be obligated to refund any consideration paid by the Lessor prior to such modification, cancellation, or abrogation, including, but not limited to, bonuses, rentals and royalties.

NOTE: This acreage is entirely within the boundary of the Atchafalaya Basin Legal Area.

NOTE: The State of Louisiana does hereby reserve, and this lease shall be subject to, the imprescriptible right of surface use in the nature of a servitude in favor of the Department of Natural Resources, including its Offices and Commissions, for the sole purpose of implementing, constructing, servicing and maintaining approved coastal zone management and/or restoration projects. Utilization of any and all rights derived under this lease by the mineral lessee, its agents, successors or assigns, shall not interfere with nor hinder the reasonable surface use by the Department of Natural Resources, its Offices or Commissions, as herein above reserved.

Applicant: THEOPHILUS OIL, GAS & LAND SERVICES, LLC

Bidder	Cash Payment	Price/Acre	Rental	Oil	Gas	Other

Legend

14040021



Active_Leases



0 3,000 Feet



IBERIA

T12S - R11E

P.O.B.

SL 18258

LITTLE BAYOU MALLET

SL 2655

SL 20924

SL 21078

T13S - R11E