

**TRACT 43857 - Assumption Parish, Louisiana**

All of the lands now or formerly constituting the beds and bottoms of all water bodies of every nature and description as to which title is vested in the State of Louisiana, together with all islands arising therein and other lands formed by accretion or by reliction, where allowed by law, excepting tax adjudicated lands, and not presently under mineral lease on April 9, 2014, situated in Assumption Parish, Louisiana, and more particularly described as follows: Beginning at the Northeast corner of State Lease No. 20927, having Coordinates of X = 2,046,214.99 and Y = 475,860.00; thence East 9,000.00 feet to a point having Coordinates of X = 2,055,214.99 and Y = 475,860.00; thence South 15,840.00 feet to a point having Coordinates of X = 2,055,214.99 and Y = 460,020.00; thence West 9,000.00 feet to the Southeast corner of said State Lease No. 20927, having Coordinates of X = 2,046,214.99 and Y = 460,020.00; thence along the East boundary of said State Lease No. 20927 the following courses and distances: North 5,554.99 feet to a point having Coordinates of X = 2,046,214.99 and Y = 465,574.99, North 74 degrees 24 minutes 26 seconds West 446.43 feet to a point having Coordinates of X = 2,045,784.99 and Y = 465,694.99, North 61 degrees 47 minutes 54 seconds West 391.47 feet to a point having Coordinates of X = 2,045,439.99 and Y = 465,879.99, North 54 degrees 32 minutes 42 seconds West 405.11 feet to a point having Coordinates of X = 2,045,110.00 and Y = 466,114.98, North 42 degrees 57 minutes 17 seconds West 396.23 feet to a point having Coordinates of X = 2,044,840.00 and Y = 466,404.98, North 36 degrees 39 minutes 21 seconds West 804.01 feet to a point having Coordinates of X = 2,044,360.00 and Y = 467,049.99, North 31 degrees 24 minutes 00 seconds West 451.05 feet to a point having Coordinates of X = 2,044,125.00 and Y = 467,434.98, North 25 degrees 47 minutes 13 seconds West 494.23 feet to a point having Coordinates of X = 2,043,910.00 and Y = 467,879.99, North 20 degrees 19 minutes 26 seconds West 287.91 feet to a point having Coordinates of X = 2,043,810.00 and Y = 468,149.98, North 10 degrees 10 minutes 32 seconds West 396.23 feet to a point having Coordinates of X = 2,043,740.00 and Y = 468,539.98, North 05 degrees 42 minutes 38 seconds West 402.00 feet to a point having Coordinates of X = 2,043,700.00 and Y = 468,939.98, East 2,514.99 feet to a point having Coordinates of X = 2,046,214.99 and Y = 468,939.98 and North 6,920.02 feet to the point of beginning, containing approximately **761 acres**, all as more particularly outlined on a plat on file in the Office of Mineral Resources, Department of Natural Resources. All bearings, distances and coordinates are based on Louisiana Coordinate System of 1927, (North or South Zone), where applicable.

NOTE: The above description of the Tract nominated for lease has been provided and corrected, where required, exclusively by the nomination party. Any mineral lease selected from this Tract and awarded by the Louisiana State Mineral and Energy Board shall be without warranty of any kind, either express, implied, or statutory, including, but not limited to, the implied warranties of merchantability and fitness for a particular purpose. Should the mineral lease awarded by the Louisiana State Mineral and Energy Board be subsequently modified, cancelled or abrogated due to the existence of conflicting leases, operating agreements, private claims

or other future obligations or conditions which may affect all or any portion of the leased Tract, it shall not relieve the Lessee of the obligation to pay any bonus due thereon to the Louisiana State Mineral and Energy Board, nor shall the Louisiana State Mineral and Energy Board be obligated to refund any consideration paid by the Lessor prior to such modification, cancellation, or abrogation, including, but not limited to, bonuses, rentals and royalties.

NOTE: The State of Louisiana does hereby reserve, and this lease shall be subject to, the imprescriptible right of surface use in the nature of a servitude in favor of the Department of Natural Resources, including its Offices and Commissions, for the sole purpose of implementing, constructing, servicing and maintaining approved coastal zone management and/or restoration projects. Utilization of any and all rights derived under this lease by the mineral lessee, its agents, successors or assigns, shall not interfere with nor hinder the reasonable surface use by the Department of Natural Resources, its Offices or Commissions, as herein above reserved.

Applicant: THEOPHILUS OIL, GAS & LAND SERVICES, LLC

Bidder	Cash Payment	Price/Acre	Rental	Oil	Gas	Other

Legend

14040027



Active\_Leases



0 3,000 Feet

ASSUMPTION

T12S - R13E

P.O.B.

BAYOU PIERRE PART

GRAND BAYOU

T13S - R12E

SL 20927

LAKE VERRET



**TRACT 43858 - Assumption Parish, Louisiana**

All of the lands now or formerly constituting the beds and bottoms of all water bodies of every nature and description as to which title is vested in the State of Louisiana, together with all islands arising therein and other lands formed by accretion or by reliction, where allowed by law, excepting tax adjudicated lands, and not presently under mineral lease on April 9, 2014, situated in Assumption Parish, Louisiana, and more particularly described as follows: Beginning at a point having Coordinates of X = 2,055,214.99 and Y = 475,860.00; thence East 9,480.00 feet to a point having Coordinates of X = 2,064,694.99 and Y = 475,860.00; thence South 15,840.00 feet to a point having Coordinates of X = 2,064,694.99 and Y = 460,020.00; thence West 9,480.00 feet to a point having Coordinates of X = 2,055,214.99 and Y = 460,020.00; thence North 15,840.00 feet to the point of beginning, **LESS AND EXCEPT** any right, title, and interest in lands owned by and not under lease from the State of Louisiana, on behalf of the Assumption Parish School Board, situated in Section 16, Township 13 South, Range 13 East, Assumption Parish, Louisiana, contained within the above described tract, (This tract includes only waterbottoms claimed and owned by the state and specifically excludes any land which the state or Wildlife and Fisheries may claim or own and to which the mineral rights are vested in them), containing approximately **412 acres**, all as more particularly outlined on a plat on file in the Office of Mineral Resources, Department of Natural Resources. All bearings, distances and coordinates are based on Louisiana Coordinate System of 1927, (North or South Zone), where applicable.

NOTE: The above description of the Tract nominated for lease has been provided and corrected, where required, exclusively by the nomination party. Any mineral lease selected from this Tract and awarded by the Louisiana State Mineral and Energy Board shall be without warranty of any kind, either express, implied, or statutory, including, but not limited to, the implied warranties of merchantability and fitness for a particular purpose. Should the mineral lease awarded by the Louisiana State Mineral and Energy Board be subsequently modified, cancelled or abrogated due to the existence of conflicting leases, operating agreements, private claims or other future obligations or conditions which may affect all or any portion of the leased Tract, it shall not relieve the Lessee of the obligation to pay any bonus due thereon to the Louisiana State Mineral and Energy Board, nor shall the Louisiana State Mineral and Energy Board be obligated to refund any consideration paid by the Lessor prior to such modification, cancellation, or abrogation, including, but not limited to, bonuses, rentals and royalties.

NOTE: The State of Louisiana does hereby reserve, and this lease shall be subject to, the imprescriptible right of surface use in the nature of a servitude in favor of the Department of Natural Resources, including its Offices and Commissions, for the sole purpose of implementing, constructing, servicing and maintaining approved coastal zone management and/or restoration projects. Utilization of any and all rights derived

under this lease by the mineral lessee, its agents, successors or assigns, shall not interfere with nor hinder the reasonable surface use by the Department of Natural Resources, its Offices or Commissions, as herein above reserved.

Applicant: THEOPHILUS OIL, GAS & LAND SERVICES, LLC

Bidder	Cash Payment	Price/Acre	Rental	Oil	Gas	Other

**Legend**



ASSUMPTION

T12S - R13E

LITTLE GRAND BAYOU

P.O.B.

T13S - R13E

ELM HALL WMA

GRAND BAYOU



3,000 Feet

**TRACT 43859 - Cameron Parish, Louisiana**

All of the lands now or formerly constituting the beds and bottoms of all water bodies of every nature and description as to which title is vested in the State of Louisiana, together with all islands arising therein and other lands formed by accretion or by reliction, where allowed by law, excepting tax adjudicated lands, and not presently under mineral lease on April 9, 2014, situated in Cameron Parish, Louisiana, and more particularly described as follows: Beginning at a point having Coordinates of X = 1,555,280.00 and Y = 469,287.00; thence East 4,472.00 feet to the Northwest corner of State Lease No. 21243 having Coordinates of X = 1,559,752.00 and Y = 469,287.00; thence South 5,530.50 feet along the boundary of said State Lease No. 21243 to its Southwest corner having Coordinates of X = 1,559,752.00 and Y = 463,756.50; thence West 4,472.00 feet to a point having Coordinates of X = 1,555,280.00 and Y = 463,756.50; North 5,530.50 feet to the point of beginning, containing approximately **564 acres**, all as more particularly outlined on a plat on file in the Office of Mineral Resources, Department of Natural Resources. All bearings, distances and coordinates are based on Louisiana Coordinate System of 1927, (North or South Zone), where applicable.

NOTE: The above description of the Tract nominated for lease has been provided and corrected, where required, exclusively by the nomination party. Any mineral lease selected from this Tract and awarded by the Louisiana State Mineral and Energy Board shall be without warranty of any kind, either express, implied, or statutory, including, but not limited to, the implied warranties of merchantability and fitness for a particular purpose. Should the mineral lease awarded by the Louisiana State Mineral and Energy Board be subsequently modified, cancelled or abrogated due to the existence of conflicting leases, operating agreements, private claims or other future obligations or conditions which may affect all or any portion of the leased Tract, it shall not relieve the Lessee of the obligation to pay any bonus due thereon to the Louisiana State Mineral and Energy Board, nor shall the Louisiana State Mineral and Energy Board be obligated to refund any consideration paid by the Lessor prior to such modification, cancellation, or abrogation, including, but not limited to, bonuses, rentals and royalties.

NOTE: The State of Louisiana does hereby reserve, and this lease shall be subject to, the imprescriptible right of surface use in the nature of a servitude in favor of the Department of Natural Resources, including its Offices and Commissions, for the sole purpose of implementing, constructing, servicing and maintaining approved coastal zone management and/or restoration projects. Utilization of any and all rights derived under this lease by the mineral lessee, its agents, successors or assigns, shall not interfere with nor hinder the reasonable surface use by the Department of Natural Resources, its Offices or Commissions, as herein above reserved.

Applicant: ALLEN & KIRMSE, LTD.

Bidder	Cash Payment	Price/Acre	Rental	Oil	Gas	Other



**Legend**  
14040011  
Active\_Leases



CAMERON

T12S - R3W

P.O.B.

GRAND LAKE

MALLARD BAY

SL 21243

SL 19938

**TRACT 43860 - Assumption and St. Martin Parishes, Louisiana**

All of the lands now or formerly constituting the beds and bottoms of all water bodies of every nature and description as to which title is vested in the State of Louisiana, together with all islands arising therein and other lands formed by accretion or by reliction, where allowed by law, excepting tax adjudicated lands, and not presently under mineral lease on April 9, 2014, situated in Assumption and St. Martin Parishes, Louisiana, and more particularly described as follows: Beginning at the Northeast corner of State Lease No. 20931, also being the Southeast corner of State Lease No. 20926, also being the Southwest corner of State Lease No. 20927, having Coordinates of X = 2,029,912.33 and Y = 460,020.00; thence East 16,302.66 feet along the South boundary of said State Lease No. 20927 to its Southeast corner, having Coordinates of X = 2,046,214.99 and Y = 460,020.00; thence Southerly approximately 7,776 feet to the Northeast corner of State Lease No. 346, as amended; thence along the boundary of said State Lease No. 346 the following courses: Westerly, Southerly, Westerly, Southerly and Westerly to the point of intersection with the East boundary of the Atchafalaya Basin; thence Northerly and Northwesterly along the East boundary of said Atchafalaya Basin to a point on the East boundary of State Lease No. 20930, also being the Southeast corner of said State Lease No. 20931, also being a point of intersection with a North/South line having a Coordinate of X = 2,029,912.33; thence North approximately 2,965 feet to the point of beginning, **LESS AND EXCEPT** that portion, if any, of the above described tract that may lie inside of the boundary of the Atchafalaya Basin, and **LESS AND EXCEPT** that portion, if any, of said State Lease No. 346 that may lie within the above described tract, containing approximately **422 acres**, all as more particularly outlined on a plat on file in the Office of Mineral Resources, Department of Natural Resources. All bearings, distances and coordinates are based on Louisiana Coordinate System of 1927, (North or South Zone), where applicable.

NOTE: The above description of the Tract nominated for lease has been provided and corrected, where required, exclusively by the nomination party. Any mineral lease selected from this Tract and awarded by the Louisiana State Mineral and Energy Board shall be without warranty of any kind, either express, implied, or statutory, including, but not limited to, the implied warranties of merchantability and fitness for a particular purpose. Should the mineral lease awarded by the Louisiana State Mineral and Energy Board be subsequently modified, cancelled or abrogated due to the existence of conflicting leases, operating agreements, private claims or other future obligations or conditions which may affect all or any portion of the leased Tract, it shall not relieve the Lessee of the obligation to pay any bonus due thereon to the Louisiana State Mineral and Energy Board, nor shall the Louisiana State Mineral and Energy Board be obligated to refund any consideration paid by the Lessor prior to such modification, cancellation, or abrogation, including, but not limited to, bonuses, rentals and royalties.

NOTE: The State of Louisiana does hereby reserve, and this lease shall be subject to, the imprescriptible right of surface use in the nature of a servitude in favor of the Department of Natural Resources, including its Offices and Commissions, for the sole purpose of implementing, constructing, servicing and maintaining approved coastal zone management and/or restoration projects. Utilization of any and all rights derived under this lease by the mineral lessee, its agents, successors or assigns, shall not interfere with nor hinder the reasonable surface use by the Department of Natural Resources, its Offices or Commissions, as herein above reserved.

Applicant: THEOPHILUS OIL, GAS & LAND SERVICES, LLC

Bidder	Cash Payment	Price/Acre	Rental	Oil	Gas	Other

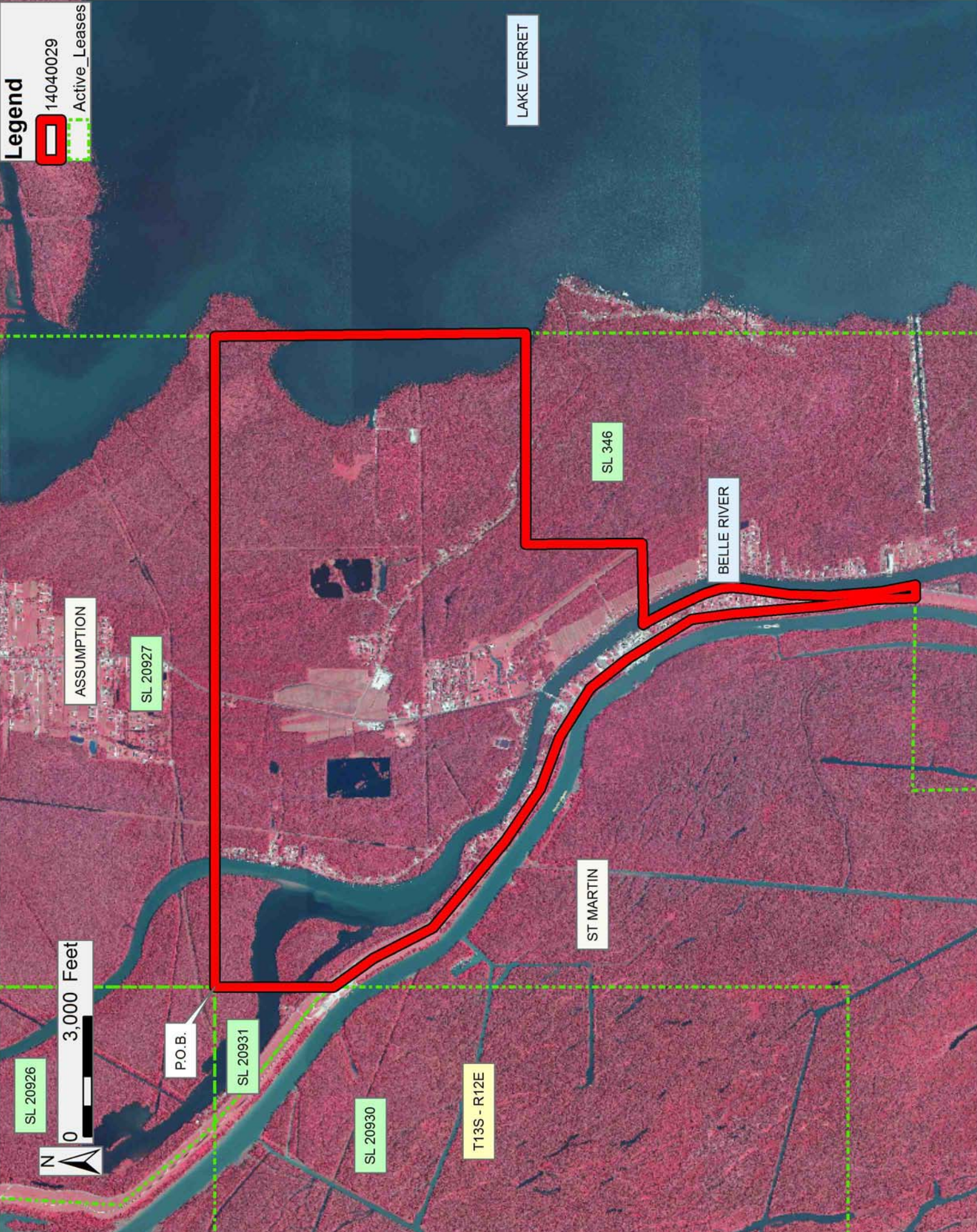
**Legend**

14040029

Active\_Leases



LAKE VERRET



ASSUMPTION

SL 20927

SL 346

BELLE RIVER

ST MARTIN

SL 20926

3,000 Feet

P.O.B.

SL 20931

SL 20930

T13S - R12E

**TRACT 43861 - Assumption Parish, Louisiana**

All of the lands now or formerly constituting the beds and bottoms of all water bodies of every nature and description as to which title is vested in the State of Louisiana, together with all islands arising therein and other lands formed by accretion or by reliction, where allowed by law, excepting tax adjudicated lands, and not presently under mineral lease on April 9, 2014, situated in Assumption Parish, Louisiana, and more particularly described as follows: Beginning at a point being the Southeast corner of State Lease No. 20927 having Coordinates of X = 2,046,214.99 and Y = 460,020.00; thence East 18,480.00 feet to a point having Coordinates of X = 2,064,694.99 and Y = 460,020.00; thence South 7,860.00 feet to a point having Coordinates of X = 2,064,694.99 and Y = 452,160.00; thence Westerly approximately 18,480 feet to a point on the boundary of State Lease No. 346, as amended; thence Northerly approximately 7,776 feet to the point of beginning, (This tract includes only waterbottoms claimed and owned by the state and specifically excludes any land which the state or Wildlife and Fisheries may claim or own and to which the mineral rights are vested in them), containing approximately **2,381 acres**, all as more particularly outlined on a plat on file in the Office of Mineral Resources, Department of Natural Resources. All bearings, distances and coordinates are based on Louisiana Coordinate System of 1927, (North or South Zone), where applicable.

NOTE: The above description of the Tract nominated for lease has been provided and corrected, where required, exclusively by the nomination party. Any mineral lease selected from this Tract and awarded by the Louisiana State Mineral and Energy Board shall be without warranty of any kind, either express, implied, or statutory, including, but not limited to, the implied warranties of merchantability and fitness for a particular purpose. Should the mineral lease awarded by the Louisiana State Mineral and Energy Board be subsequently modified, cancelled or abrogated due to the existence of conflicting leases, operating agreements, private claims or other future obligations or conditions which may affect all or any portion of the leased Tract, it shall not relieve the Lessee of the obligation to pay any bonus due thereon to the Louisiana State Mineral and Energy Board, nor shall the Louisiana State Mineral and Energy Board be obligated to refund any consideration paid by the Lessor prior to such modification, cancellation, or abrogation, including, but not limited to, bonuses, rentals and royalties.

NOTE: The State of Louisiana does hereby reserve, and this lease shall be subject to, the imprescriptible right of surface use in the nature of a servitude in favor of the Department of Natural Resources, including its Offices and Commissions, for the sole purpose of implementing, constructing, servicing and maintaining approved coastal zone management and/or restoration projects. Utilization of any and all rights derived under this lease by the mineral lessee, its agents, successors or assigns, shall not interfere with nor hinder the reasonable surface use by the

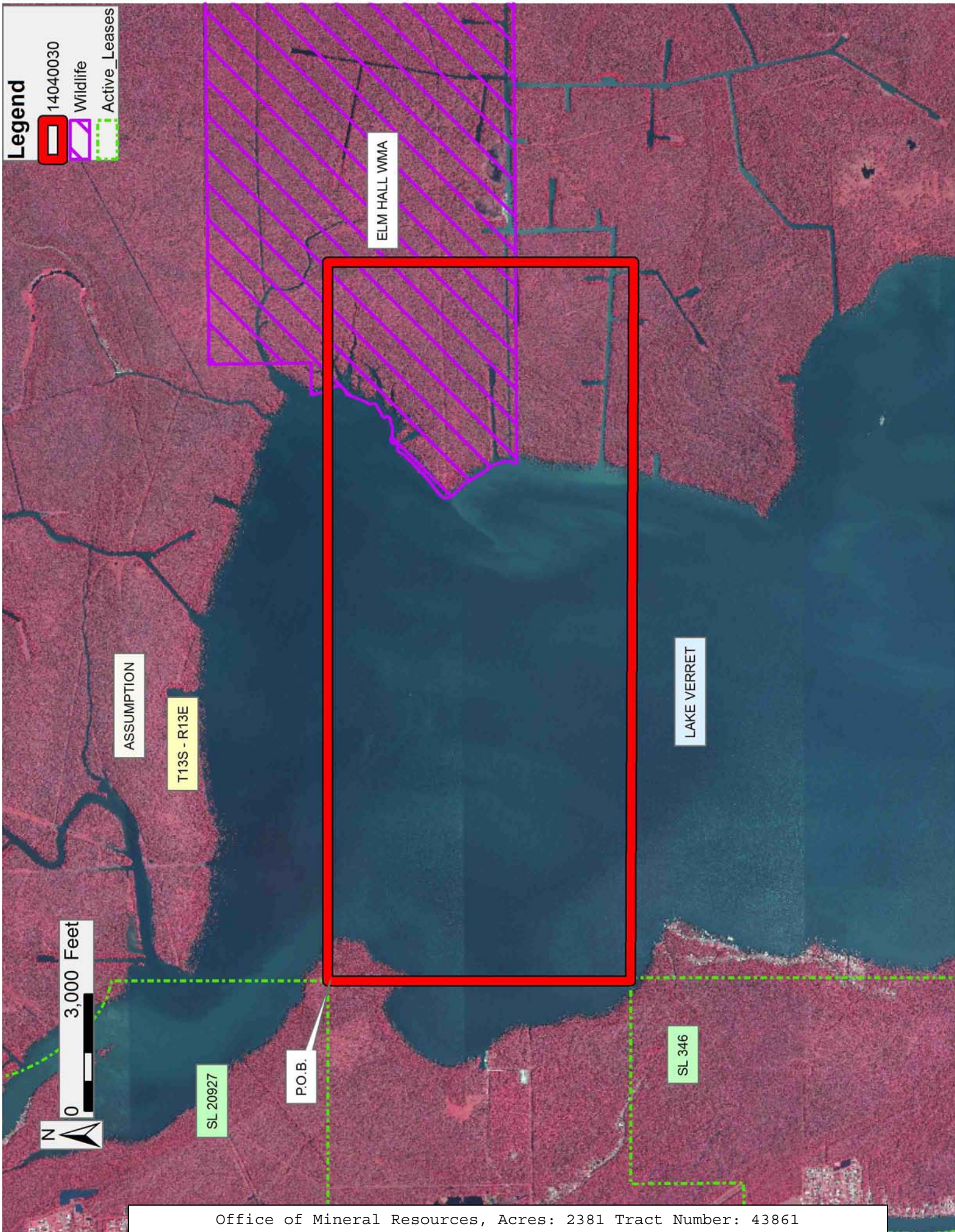
Department of Natural Resources, its Offices or Commissions, as herein above reserved.

Applicant: THEOPHILUS OIL, GAS & LAND SERVICES, LLC

Bidder	Cash Payment	Price/Acre	Rental	Oil	Gas	Other

**Legend**

- 14040030
- Wildlife
- Active\_Leases



**TRACT 43862 - Cameron Parish, Louisiana**

All of the lands now or formerly constituting the beds and bottoms of all water bodies of every nature and description as to which title is vested in the State of Louisiana, together with all islands arising therein and other lands formed by accretion or by reliction, where allowed by law, excepting tax adjudicated lands, and not presently under mineral lease on April 9, 2014, situated in Cameron Parish, Louisiana, and more particularly described as follows: Beginning at a point on the boundary of State Lease No. 21243 having Coordinates of X = 1,560,368.00 and Y = 463,756.50; thence South 437.32 feet to the Northeast corner of State Lease No. 19938, as amended having Coordinates of X = 1,560,368.00 and Y = 463,319.18; thence along the boundary of said State Lease No. 19938 the following courses: Northwesterly on an arc to the left having a radius of 14,240.00 feet and a chord bearing of North 77 degrees 30 minutes 20 seconds West 867.45 feet to a point having Coordinates of X = 1,559,521.10 and Y = 463,506.85, Northwesterly on an arc to the left having a radius of 6,400.00 feet and a chord bearing of North 83 degrees 40 minutes 28 seconds West 1,295.04 feet to a point having Coordinates of X = 1,558,233.94 and Y = 463,649.53, Southwesterly on an arc to the left having a radius of 2,340.00 feet and a chord bearing of South 74 degrees 51 minutes 24 seconds West 1,296.17 feet to a point having Coordinates of X = 1,556,982.78 and Y = 463,310.93, South 48 degrees 42 minutes 00 seconds East 1,185.72 feet to a point having Coordinates of X = 1,557,873.57 and Y = 462,528.36, South 68 degrees 02 minutes 06 seconds West 366.10 feet to a point having Coordinates of X = 1,557,534.05 and Y = 462,391.42 and Southeasterly on an arc to the left having a radius of 8,700.00 feet and a chord bearing of South 58 degrees 26 minutes 38 seconds East 3,207.31 feet to a point on the boundary of State Lease No. 20042 having Coordinates of X = 1,560,267.08 and Y = 460,712.93; thence along the boundary of said State Lease No. 20042 the following courses: South 00 degrees 42 minutes 06 seconds West 1,522.96 feet and North 89 degrees 17 minutes 54 seconds West 1,500.00 feet to its Westernmost corner and a point on the boundary of State Lease No. 21182 having Coordinates of X = 1,558,748.54 and Y = 459,208.45; thence along the boundary of said State Lease No. 21182 the following courses: West 360.54 feet, North 927.55 feet and West 2,885.00 feet to its Northwest corner having Coordinates of X = 1,555,503.00 and Y = 460,136.00; thence West approximately 223 feet to a point on the boundary of State Lease No. 344, as amended having a Coordinate of Y = 460,136.00; thence along the boundary of said State Lease No. 344 the following courses: Northerly approximately 3,408 feet and Northwesterly along an arc to the left having a radius of 3,000.00 feet to the point of intersection with an East West line having a Coordinate of Y = 463,756.50; thence East approximately 5,542 feet to the Southwest corner of said State Lease No. 21243 having Coordinates of X = 1,559,752.00 and Y = 463,756.50; thence East 616.00 feet along the boundary of said State Lease No. 21243 to the point of beginning, **LESS AND EXCEPT** any of portion of said State Lease No. 344 that may lie within the above described tract, containing approximately **321 acres**, all as more particularly outlined on a plat on file in the Office



of Mineral Resources, Department of Natural Resources. All bearings, distances and coordinates are based on Louisiana Coordinate System of 1927, (North or South Zone), where applicable.

NOTE: The above description of the Tract nominated for lease has been provided and corrected, where required, exclusively by the nomination party. Any mineral lease selected from this Tract and awarded by the Louisiana State Mineral and Energy Board shall be without warranty of any kind, either express, implied, or statutory, including, but not limited to, the implied warranties of merchantability and fitness for a particular purpose. Should the mineral lease awarded by the Louisiana State Mineral and Energy Board be subsequently modified, cancelled or abrogated due to the existence of conflicting leases, operating agreements, private claims or other future obligations or conditions which may affect all or any portion of the leased Tract, it shall not relieve the Lessee of the obligation to pay any bonus due thereon to the Louisiana State Mineral and Energy Board, nor shall the Louisiana State Mineral and Energy Board be obligated to refund any consideration paid by the Lessor prior to such modification, cancellation, or abrogation, including, but not limited to, bonuses, rentals and royalties.

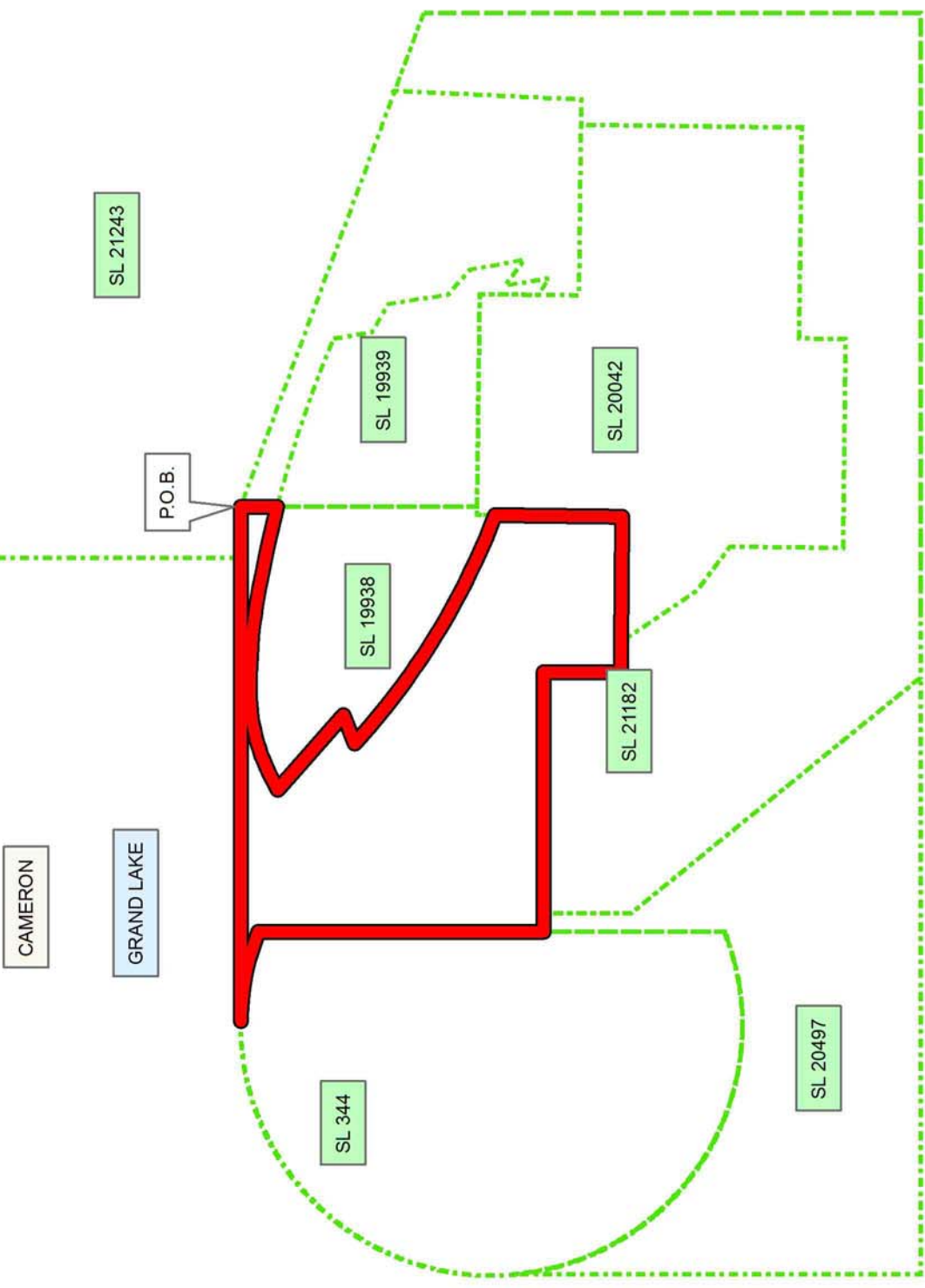
NOTE: The State of Louisiana does hereby reserve, and this lease shall be subject to, the imprescriptible right of surface use in the nature of a servitude in favor of the Department of Natural Resources, including its Offices and Commissions, for the sole purpose of implementing, constructing, servicing and maintaining approved coastal zone management and/or restoration projects. Utilization of any and all rights derived under this lease by the mineral lessee, its agents, successors or assigns, shall not interfere with nor hinder the reasonable surface use by the Department of Natural Resources, its Offices or Commissions, as herein above reserved.

Applicant: ALLEN & KIRMSE, LTD.

Bidder	Cash Payment	Price/Acre	Rental	Oil	Gas	Other

**Legend**

-  14040012
-  Blocks
-  Active\_Leases



**TRACT 43863 - Cameron Parish, Louisiana**

All of the lands now or formerly constituting the beds and bottoms of all water bodies of every nature and description as to which title is vested in the State of Louisiana, together with all islands arising therein and other lands formed by accretion or by reliction, where allowed by law, excepting tax adjudicated lands, and not presently under mineral lease on April 9, 2014, situated in Cameron Parish, Louisiana, and more particularly described as follows: Beginning at a point on the boundary of State Lease No. 21243 having Coordinates of X = 1,560,368.00 and Y = 463,756.50; thence South 69 degrees 39 minutes 59 seconds East 5,307.14 feet along the boundary of said State Lease No. 21243 to the Northernmost Northwest corner of State Lease No. 21182 having Coordinates of X = 1,565,344.43 and Y = 461,912.35; thence along the boundary of said State Lease No. 21182 the following courses: South 02 degrees 41 minutes 17 seconds West 2,225.98 feet and West 304.45 feet to the Easternmost Northeast corner of State Lease No. 20042 having Coordinates of X = 1,564,935.59 and Y = 459,688.82; thence along the boundary of said State Lease No. 20042 the following courses: North 89 degrees 17 minutes 54 seconds West 2,040.70 feet and North 00 degrees 42 minutes 06 seconds East 486.72 feet to a point on the boundary of State Lease No. 19939, as amended, having Coordinates of X = 1,562,901.00 and Y = 460,200.50; thence along the boundary of said State Lease No. 19939 the following courses: South 55 degrees 45 minutes 49 seconds East 239.54 feet to a point having Coordinates of X = 1,563,099.04 and Y = 460,065.73, North 09 degrees 03 minutes 38 seconds West 532.52 feet to a point having Coordinates of X = 1,563,015.17 and Y = 460,591.61, South 53 degrees 29 minutes 36 seconds East 383.38 feet to a point having Coordinates of X = 1,563,323.33 and Y = 460,363.53, North 10 degrees 15 minutes 24 seconds West 656.68 feet to a point having Coordinates of X = 1,563,206.40 and Y = 461,009.71, North 48 degrees 42 minutes 04 seconds West 399.30 feet to a point having Coordinates of X = 1,562,906.42 and Y = 461,273.25, North 09 degrees 02 minutes 08 seconds West 725.50 feet to a point having Coordinates of X = 1,562,792.48 and Y = 461,989.74, North 59 degrees 34 minutes 55 seconds West 391.06 feet to a point having Coordinates of X = 1,562,455.25 and Y = 462,187.74, North 09 degrees 37 minutes 10 seconds West 465.36 feet to a point having Coordinates of X = 1,562,377.49 and Y = 462,646.56 and Northwesterly along an arc to the left having a radius of 14,240.00 feet and a chord bearing of North 71 degrees 29 minutes 36 seconds West 2,119.07 feet to its Northwest corner having Coordinates of X = 1,560,368.00 and Y = 463,319.18; thence North 437.32 feet to the point of beginning, containing approximately **168 acres**, all as more particularly outlined on a plat on file in the Office of Mineral Resources, Department of Natural Resources. All bearings, distances and coordinates are based on Louisiana Coordinate System of 1927, (North or South Zone), where applicable.

NOTE: The above description of the Tract nominated for lease has been provided and corrected, where required, exclusively by the nomination party. Any mineral lease selected from this Tract and awarded by the

Louisiana State Mineral and Energy Board shall be without warranty of any kind, either express, implied, or statutory, including, but not limited to, the implied warranties of merchantability and fitness for a particular purpose. Should the mineral lease awarded by the Louisiana State Mineral and Energy Board be subsequently modified, cancelled or abrogated due to the existence of conflicting leases, operating agreements, private claims or other future obligations or conditions which may affect all or any portion of the leased Tract, it shall not relieve the Lessee of the obligation to pay any bonus due thereon to the Louisiana State Mineral and Energy Board, nor shall the Louisiana State Mineral and Energy Board be obligated to refund any consideration paid by the Lessor prior to such modification, cancellation, or abrogation, including, but not limited to, bonuses, rentals and royalties.

NOTE: The State of Louisiana does hereby reserve, and this lease shall be subject to, the imprescriptible right of surface use in the nature of a servitude in favor of the Department of Natural Resources, including its Offices and Commissions, for the sole purpose of implementing, constructing, servicing and maintaining approved coastal zone management and/or restoration projects. Utilization of any and all rights derived under this lease by the mineral lessee, its agents, successors or assigns, shall not interfere with nor hinder the reasonable surface use by the Department of Natural Resources, its Offices or Commissions, as herein above reserved.

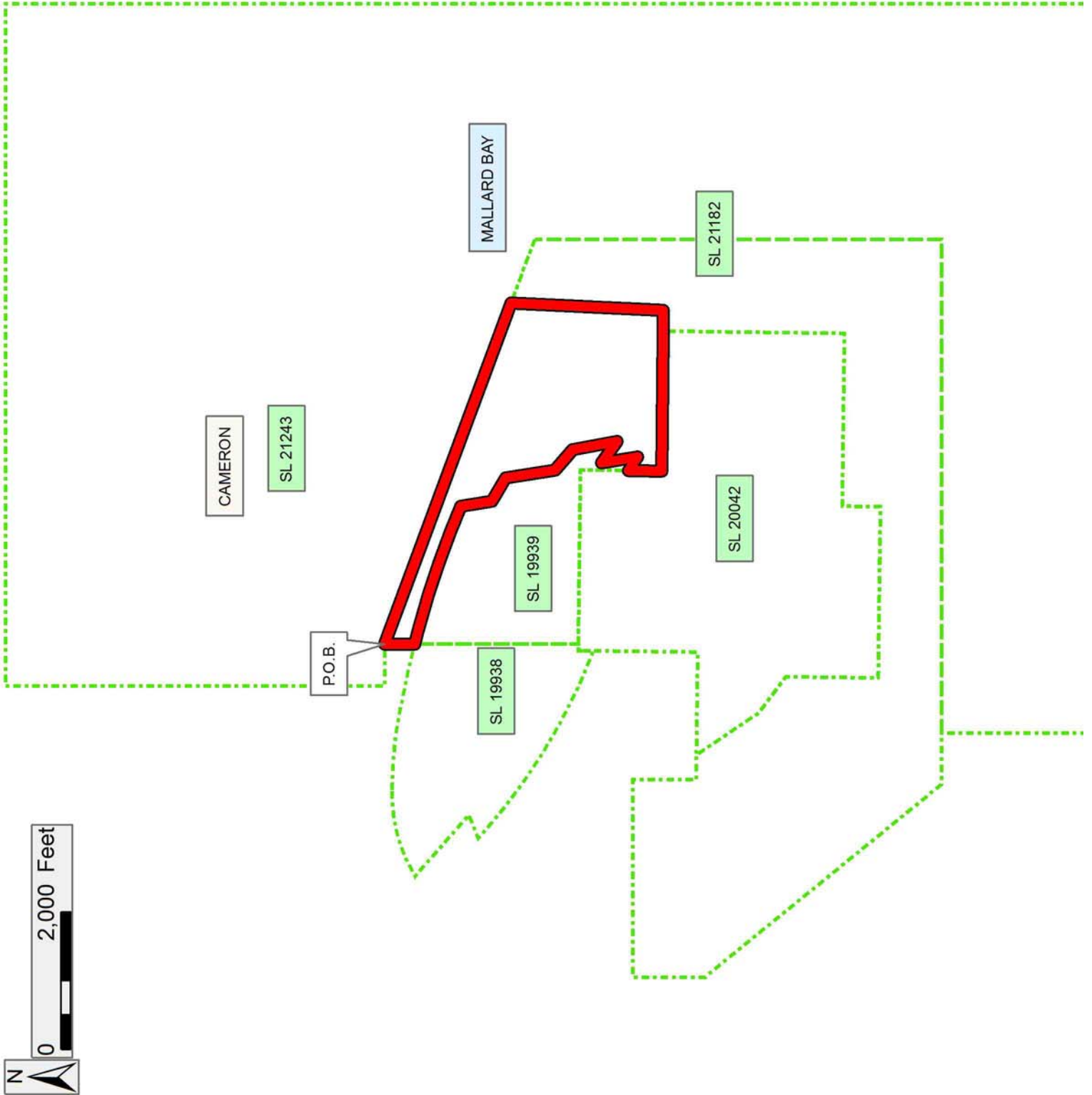
Applicant: ALLEN & KIRMSE, LTD.

Bidder	Cash Payment	Price/Acre	Rental	Oil	Gas	Other

**Legend**

14040013

Active\_Leases



**TRACT 43864 - Lafourche and St. Charles Parishes, Louisiana**

All of the lands now or formerly constituting the beds and bottoms of all water bodies of every nature and description as to which title is vested in the State of Louisiana, together with all islands arising therein and other lands formed by accretion or by reliction, where allowed by law, excepting tax adjudicated lands, and not presently under mineral lease on April 9, 2014, situated in Lafourche and St. Charles Parishes, Louisiana, and more particularly described as follows: Beginning at the Northwest corner of State Lease No. 21282 and a point on the east boundary of State Lease No. 21302 having Coordinates of X = 2,312,957.63 and Y = 383,782.00; thence North 316.54 feet along the east boundary of said State Lease No. 21302 to its Northeast corner and the Southeast corner of State Lease No. 21301 having Coordinates of X = 2,312,957.63 and Y = 384,098.54; thence along the boundaries of said State Lease No. 21301 the following courses: continue North 1,371.46 feet to a point having Coordinates of X = 2,312,957.63 and Y = 385,470.00, West 3,081.63 feet to a point having Coordinates of X = 2,309,876.00 and Y = 385,470.00 and South 1,371.46 feet to its Southwest corner and the Northwest corner of said State Lease No. 21302 having Coordinates of X = 2,309,876.00 and Y = 384,098.54; thence continue South 2,532.79 feet along the west boundary of said State Lease No. 21302 to its Southwest corner and a point on the north boundary of State Lease No. 21303 having Coordinates of X = 2,309,876.00 and Y = 381,565.75; thence along the boundaries of said State Lease No. 21303 the following courses: West 183.00 feet to a point having Coordinates of X = 2,309,693.00 and Y = 381,565.75 and South 725.75 feet to a point having Coordinates of X = 2,309,693.00 and Y = 380,840.00; thence West 3,893.00 feet to a point having Coordinates of X = 2,305,800.00 and Y = 380,840.00; thence North 16,170.00 feet to a point having Coordinates of X = 2,305,800.00 and Y = 397,010.00; thence East 18,480.00 feet to a point having Coordinates of X = 2,324,280.00 and Y = 397,010.00; thence South 10,517.66 feet to a point on the north boundary of State Lease No. 21280 having Coordinates of X = 2,324,280.00 and Y = 386,492.34; thence along the boundaries of said State Lease No. 21280 the following courses: West 1,507.59 feet to a point having Coordinates of X = 2,322,772.41 and Y = 386,492.34 and South 2,710.34 feet to its Southwest corner and a point on the north boundary of State Lease No. 21183 having Coordinates of X = 2,322,772.41 and Y = 383,782.00; thence West 4,940.41 feet along the north boundary of said State Lease No. 21183 to its Northwest corner and the Northeast corner of said State Lease No. 21282 having Coordinates of X = 2,317,832.00 and Y = 383,782.00; thence continue West 4,874.37 feet along the north boundary of said State Lease No. 21282 to the point of beginning, **LESS AND EXCEPT** that portion, if any, of the above described tract which may lie inside of the boundary of the Salvador Wildlife Management Area, containing approximately **1768 acres**, all as more particularly outlined on a plat on file in the Office of Mineral Resources, Department of Natural Resources. All bearings, distances and coordinates are based on Louisiana Coordinate System of 1927, (North or South Zone), where applicable.

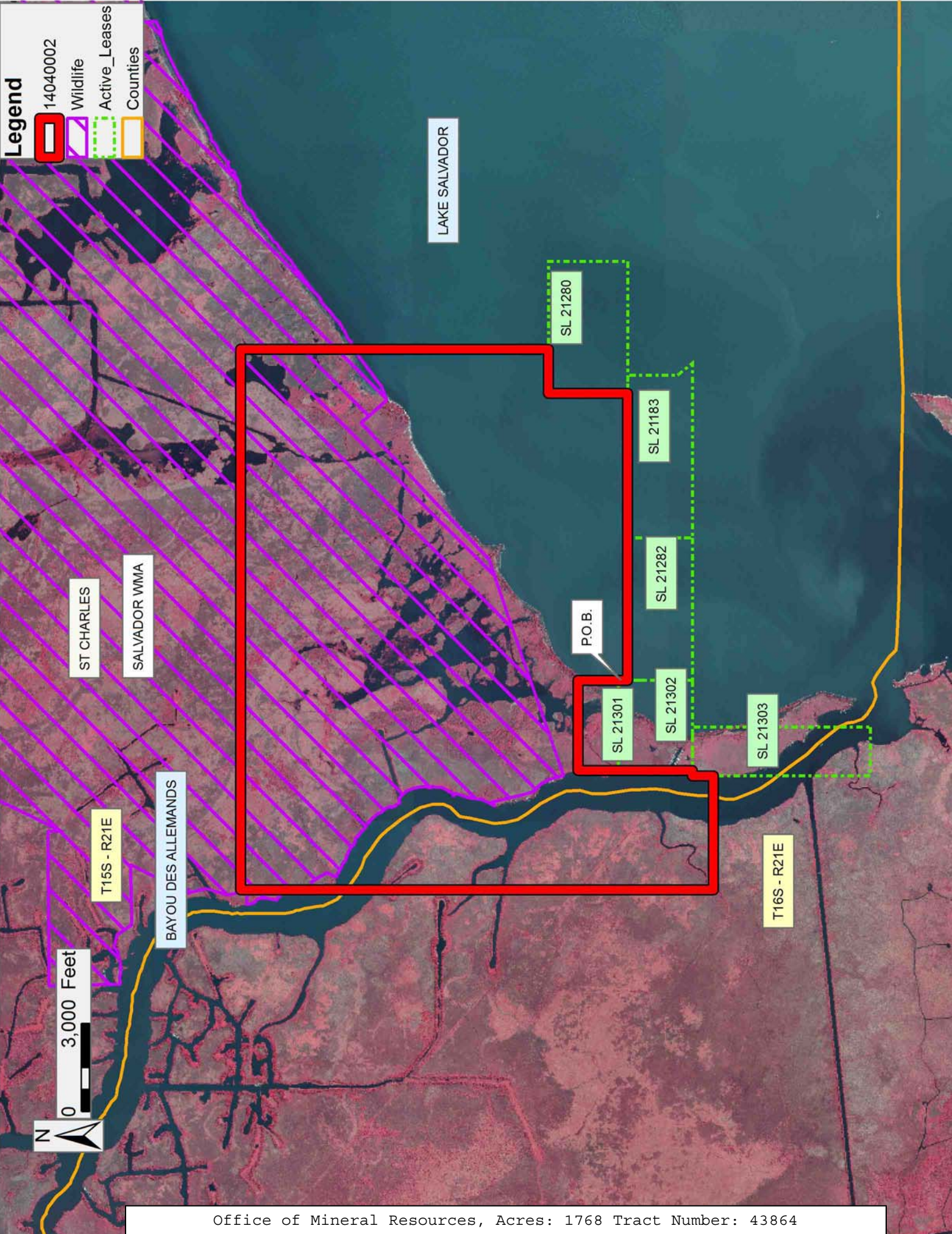
NOTE: The above description of the Tract nominated for lease has been provided and corrected, where required, exclusively by the nomination party. Any mineral lease selected from this Tract and awarded by the Louisiana State Mineral and Energy Board shall be without warranty of any kind, either express, implied, or statutory, including, but not limited to, the implied warranties of merchantability and fitness for a particular purpose. Should the mineral lease awarded by the Louisiana State Mineral and Energy Board be subsequently modified, cancelled or abrogated due to the existence of conflicting leases, operating agreements, private claims or other future obligations or conditions which may affect all or any portion of the leased Tract, it shall not relieve the Lessee of the obligation to pay any bonus due thereon to the Louisiana State Mineral and Energy Board, nor shall the Louisiana State Mineral and Energy Board be obligated to refund any consideration paid by the Lessor prior to such modification, cancellation, or abrogation, including, but not limited to, bonuses, rentals and royalties.

NOTE: A portion of this tract is located on or adjacent to a Louisiana designated Natural and Scenic River. The applicant must obtain authorization from the Louisiana Department of Wildlife and Fisheries, Scenic Rivers Program prior to initiating any activities within or adjacent to the river, including, but not limited to, crossings by roads and pipelines, well sites, production facilities and water withdrawals.

NOTE: The State of Louisiana does hereby reserve, and this lease shall be subject to, the imprescriptible right of surface use in the nature of a servitude in favor of the Department of Natural Resources, including its Offices and Commissions, for the sole purpose of implementing, constructing, servicing and maintaining approved coastal zone management and/or restoration projects. Utilization of any and all rights derived under this lease by the mineral lessee, its agents, successors or assigns, shall not interfere with nor hinder the reasonable surface use by the Department of Natural Resources, its Offices or Commissions, as herein above reserved.

Applicant: SOUTHLAND OIL PROPERTIES INC.

Bidder	Cash Payment	Price/Acre	Rental	Oil	Gas	Other





**TRACT 43865 - St. Charles Parish, Louisiana**

All of the lands now or formerly constituting the beds and bottoms of all water bodies of every nature and description as to which title is vested in the State of Louisiana, together with all islands arising therein and other lands formed by accretion or by reliction, where allowed by law, excepting tax adjudicated lands, and not presently under mineral lease on April 9, 2014, situated in St. Charles Parish, Louisiana, and more particularly described as follows: Beginning at a point on the north boundary of State Lease No. 21280 having Coordinates of X = 2,324,280.00 and Y = 386,492.34; thence North 10,517.66 feet to a point having Coordinates of X = 2,324,280.00 and Y = 397,010.00; thence East 5,078.51 feet to a point having west boundary of State Lease No. 21300 having Coordinates of X = 2,329,358.51 and Y = 397,010.00; thence along the boundaries of said State Lease No. 21300 the following courses: South 55 degrees 36 minutes 59 seconds West 1,115.93 feet to a point having Coordinates of X = 2,328,437.56 and Y = 396,379.80 and South 51 degrees 09 minutes 17 seconds West 2,037.12 feet to its Southwest corner and the Northwest corner of State Lease No. 21299 having Coordinates of X = 2,326,850.97 and Y = 395,102.08; thence along the boundaries of said State Lease No. 21299 the following courses: South 51 degrees 54 minutes 14 seconds West 986.74 feet to a point having Coordinates of X = 2,326,074.43 and Y = 394,493.28, South 49 degrees 22 minutes 48 seconds West 1,270.15 feet to a point having Coordinates of X = 2,325,110.33 and Y = 393,666.36, East 4,440.09 feet to a point having Coordinates of X = 2,329,550.42 and Y = 393,666.36 and North 68 degrees 31 minutes 50 seconds East 4,315.48 feet to its Northeast corner having Coordinates of X = 2,333,566.46 and Y = 395,245.85; thence South 03 degrees 42 minutes 08 seconds East 14,968.09 feet to the Northeast corner of State Lease No. 19201 having Coordinates of X = 2,334,533.00 and Y = 380,309.00; thence South 71 degrees 21 minutes 39 seconds West 1,720.23 feet along the north boundary of said State Lease No. 19201 to a point of intersection with the east boundary of State Lease No. 20852 having Coordinates of X = 2,332,903.00 and Y = 379,759.20; thence along the boundaries of said State Lease No. 20852 the following courses: North 743.80 feet to a point having Coordinates of X = 2,332,903.00 and Y = 380,503.00 and West 1,838.95 feet to its Northwest corner and a point on the east boundary of State Lease No. 20626 having Coordinates of X = 2,331,064.05 and Y = 380,503.00; thence North 00 degrees 52 minutes 41 seconds West 2,820.39 feet along the east boundary of said State Lease No. 20626 to its Northeast corner and a point on the south boundary of State Lease No. 20853 having Coordinates of X = 2,331,020.82 and Y = 383,323.06; thence along the boundaries of said State Lease No. 20853 the following courses: North 80 degrees 42 minutes 32 seconds East 845.27 feet to a point having Coordinates of X = 2,331,855.00 and Y = 383,459.53, North 1,906.47 feet to a point having Coordinates of X = 2,331,855.00 and Y = 385,366.00, West 2,213.00 feet to a point having Coordinates of X = 2,329,642.00 and Y = 385,366.00 and South 2,268.51 feet to its Southwest corner and a point on the north boundary of said State Lease No. 20626 having Coordinates of X = 2,329,642.00 and Y = 383,097.49; thence South 80 degrees 42 minutes 32 seconds West 2,400.46 feet along the

north boundary of said State Lease No. 20626 to the Southeast corner of State Lease No. 21281 having Coordinates of X = 2,327,273.03 and Y = 382,709.93; thence North 1,072.07 feet along the east boundary of said State Lease No. 21281 to its Northeast corner and the Southeast corner of said State Lease No. 21280 having Coordinates of X = 2,327,273.03 and Y = 383,782.00; thence along the boundaries of said State Lease No. 21280 the following courses: continue North 2,710.34 feet to a point having Coordinates of X = 2,327,273.03 and Y = 386,492.34 and West 2,993.03 feet to the point of beginning, **LESS AND EXCEPT** that portion, if any, of the above described tract which may lie inside of the boundary of the Salvador Wildlife Management Area, containing approximately **2317 acres**, all as more particularly outlined on a plat on file in the Office of Mineral Resources, Department of Natural Resources. All bearings, distances and coordinates are based on Louisiana Coordinate System of 1927, (North or South Zone), where applicable.

NOTE: The above description of the Tract nominated for lease has been provided and corrected, where required, exclusively by the nomination party. Any mineral lease selected from this Tract and awarded by the Louisiana State Mineral and Energy Board shall be without warranty of any kind, either express, implied, or statutory, including, but not limited to, the implied warranties of merchantability and fitness for a particular purpose. Should the mineral lease awarded by the Louisiana State Mineral and Energy Board be subsequently modified, cancelled or abrogated due to the existence of conflicting leases, operating agreements, private claims or other future obligations or conditions which may affect all or any portion of the leased Tract, it shall not relieve the Lessee of the obligation to pay any bonus due thereon to the Louisiana State Mineral and Energy Board, nor shall the Louisiana State Mineral and Energy Board be obligated to refund any consideration paid by the Lessor prior to such modification, cancellation, or abrogation, including, but not limited to, bonuses, rentals and royalties.

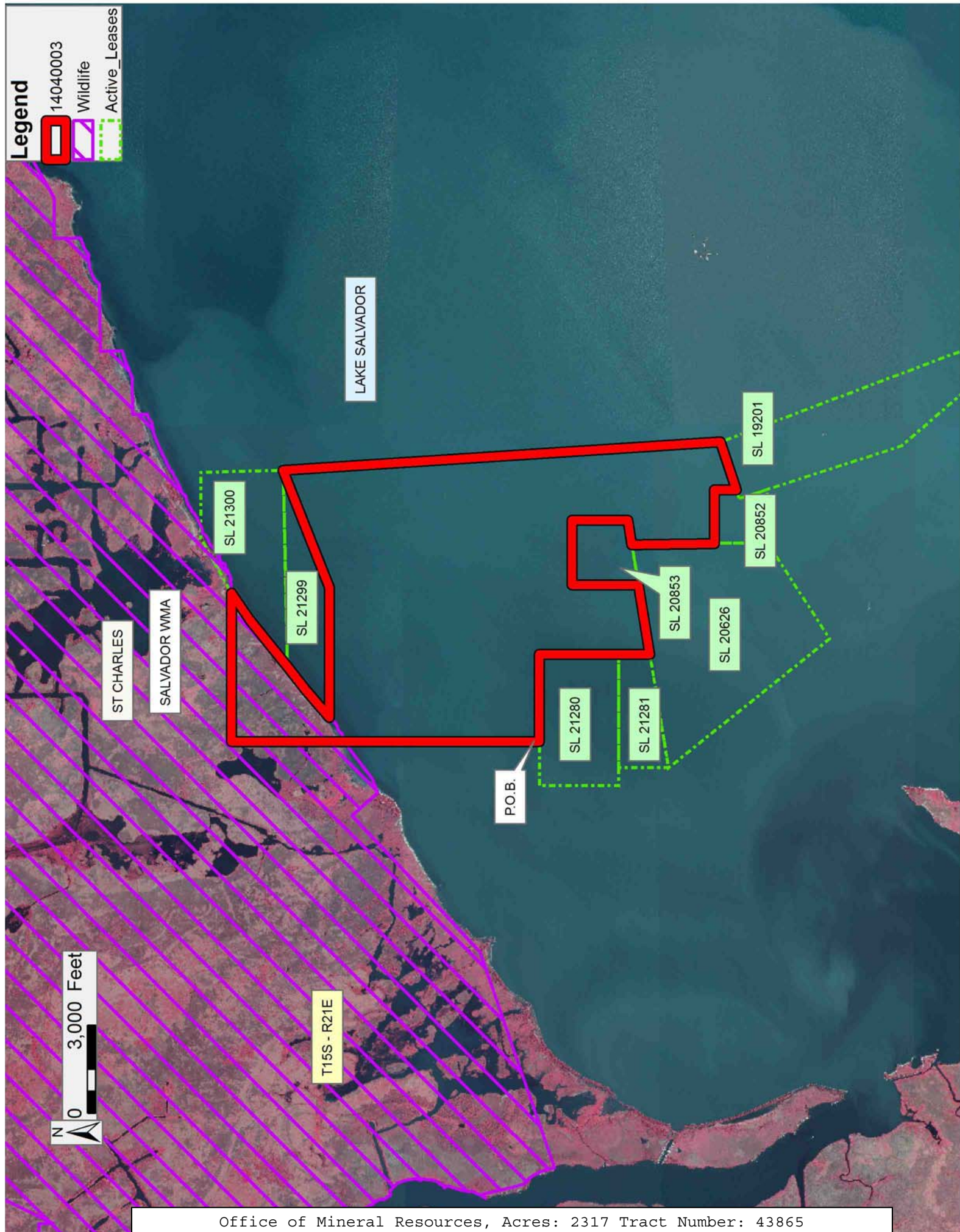
NOTE: The State of Louisiana does hereby reserve, and this lease shall be subject to, the imprescriptible right of surface use in the nature of a servitude in favor of the Department of Natural Resources, including its Offices and Commissions, for the sole purpose of implementing, constructing, servicing and maintaining approved coastal zone management and/or restoration projects. Utilization of any and all rights derived under this lease by the mineral lessee, its agents, successors or assigns, shall not interfere with nor hinder the reasonable surface use by the Department of Natural Resources, its Offices or Commissions, as herein above reserved.

Applicant: SOUTHLAND OIL PROPERTIES INC.

Bidder	Cash Payment	Price/Acre	Rental	Oil	Gas	Other

**Legend**

- 14040003
- Wildlife
- Active\_Leases



**TRACT 43866 - St. Charles Parish, Louisiana**

All of the lands now or formerly constituting the beds and bottoms of all water bodies of every nature and description as to which title is vested in the State of Louisiana, together with all islands arising therein and other lands formed by accretion or by reliction, where allowed by law, excepting tax adjudicated lands, and not presently under mineral lease on April 9, 2014, situated in St. Charles Parish, Louisiana, and more particularly described as follows: Beginning at a point on the East boundary of State Lease No. 21300 having Coordinates of X = 2,333,517.67 and Y = 397,010.00; thence East 11,924.15 feet to a point having Coordinates of X = 2,345,441.81 and Y = 397,010.00; thence South 9,327.80 feet to a point on the North boundary of State Lease No. 20854 having Coordinates of X = 2,345,441.81 and Y = 387,682.20; thence North 89 degrees 37 minutes 16 seconds West 1,540.03 feet along the North boundary of said State Lease No. 20854 to its Northwest corner having Coordinates of X = 2,343,901.81 and Y = 387,692.38; thence West 9,846.58 feet to a point having Coordinates of X = 2,334,055.23 and Y = 387,692.38; thence North 03 degrees 42 minutes 08 seconds West 7,569.27 feet to the Northeast corner of State Lease No. 21299 and the Southeast corner of said State Lease No. 21300 having Coordinates of X = 2,333,566.46 and Y = 395,245.85; thence North 01 degrees 35 minutes 04 seconds West 1,764.82 feet along the East boundary of said State Lease No. 21300 to the point of beginning, containing approximately **2498.97 acres**, all as more particularly outlined on a plat on file in the Office of Mineral Resources, Department of Natural Resources. All bearings, distances and coordinates are based on Louisiana Coordinate System of 1927, (North or South Zone), where applicable.

NOTE: The above description of the Tract nominated for lease has been provided and corrected, where required, exclusively by the nomination party. Any mineral lease selected from this Tract and awarded by the Louisiana State Mineral and Energy Board shall be without warranty of any kind, either express, implied, or statutory, including, but not limited to, the implied warranties of merchantability and fitness for a particular purpose. Should the mineral lease awarded by the Louisiana State Mineral and Energy Board be subsequently modified, cancelled or abrogated due to the existence of conflicting leases, operating agreements, private claims or other future obligations or conditions which may affect all or any portion of the leased Tract, it shall not relieve the Lessee of the obligation to pay any bonus due thereon to the Louisiana State Mineral and Energy Board, nor shall the Louisiana State Mineral and Energy Board be obligated to refund any consideration paid by the Lessor prior to such modification, cancellation, or abrogation, including, but not limited to, bonuses, rentals and royalties.

NOTE: The State of Louisiana does hereby reserve, and this lease shall be subject to, the imprescriptible right of surface use in the nature of a servitude in favor of the Department of Natural Resources, including its Offices and Commissions, for the sole purpose of implementing,

constructing, servicing and maintaining approved coastal zone management and/or restoration projects. Utilization of any and all rights derived under this lease by the mineral lessee, its agents, successors or assigns, shall not interfere with nor hinder the reasonable surface use by the Department of Natural Resources, its Offices or Commissions, as herein above reserved.

Applicant: SOUTHLAND OIL PROPERTIES INC.

Bidder	Cash Payment	Price/Acre	Rental	Oil	Gas	Other



T15S - R22E

ST CHARLES

T15S - R21E

P.O.B.

SL 21300

SL 21299

SL 20854

LAKE SALVADOR

Legend

14040004

Active\_Leases