

**TRACT 43867 - St. Charles Parish, Louisiana**

All of the lands now or formerly constituting the beds and bottoms of all water bodies of every nature and description as to which title is vested in the State of Louisiana, together with all islands arising therein and other lands formed by accretion or by reliction, where allowed by law, excepting tax adjudicated lands, and not presently under mineral lease on April 9, 2014, situated in St. Charles Parish, Louisiana, and more particularly described as follows: Beginning at a point having Coordinates of X = 2,345,441.81 and Y = 397,010.00; thence East 7,488.19 feet to a point having Coordinates of X = 2,352,930.00 and Y = 397,010.00; thence South 14,910.00 feet to a point having Coordinates of X = 2,352,930.00 and Y = 382,100.00; thence West 7,420.00 feet to a point on the East boundary of State Lease No. 19203 having Coordinates of X = 2,345,510.00 and Y = 382,100.00; thence along the boundaries of said State Lease No. 19203 the following courses: North 1,652.79 feet to a point having Coordinates of X = 2,345,510.00 and Y = 383,752.79 and North 45 degrees 13 minutes 17 seconds West 851.17 feet to its Northernmost tip and the Northeast corner of the East portion of State Lease No. 19232 having Coordinates of X = 2,344,905.81 and Y = 384,352.33; thence North 25 degrees 20 minutes 11 seconds East 1,138.66 feet to a point on the South boundary of State Lease No. 20854 having Coordinates of X = 2,345,393.08 and Y = 385,381.46; thence along the boundaries of said State Lease No. 20854 the following courses: South 89 degrees 21 minutes 50 seconds East 1,481.56 feet to a point having Coordinates of X = 2,346,874.54 and Y = 385,365.01, North 00 degrees 12 minutes 31 seconds West 2,307.78 feet to a point having Coordinates of X = 2,346,866.15 and Y = 387,672.78 and North 89 degrees 37 minutes 16 seconds West 1,424.36 feet to a point having Coordinates of X = 2,345,441.81 and Y = 387,682.20; thence North 9,327.80 feet to the point of beginning, containing approximately **2495.07 acres**, all as more particularly outlined on a plat on file in the Office of Mineral Resources, Department of Natural Resources. All bearings, distances and coordinates are based on Louisiana Coordinate System of 1927, (North or South Zone), where applicable.

NOTE: The above description of the Tract nominated for lease has been provided and corrected, where required, exclusively by the nomination party. Any mineral lease selected from this Tract and awarded by the Louisiana State Mineral and Energy Board shall be without warranty of any kind, either express, implied, or statutory, including, but not limited to, the implied warranties of merchantability and fitness for a particular purpose. Should the mineral lease awarded by the Louisiana State Mineral and Energy Board be subsequently modified, cancelled or abrogated due to the existence of conflicting leases, operating agreements, private claims or other future obligations or conditions which may affect all or any portion of the leased Tract, it shall not relieve the Lessee of the obligation to pay any bonus due thereon to the Louisiana State Mineral and Energy Board, nor shall the Louisiana State Mineral and Energy Board be obligated to refund any consideration paid by the Lessor prior to such

modification, cancellation, or abrogation, including, but not limited to, bonuses, rentals and royalties.

NOTE: The State of Louisiana does hereby reserve, and this lease shall be subject to, the imprescriptible right of surface use in the nature of a servitude in favor of the Department of Natural Resources, including its Offices and Commissions, for the sole purpose of implementing, constructing, servicing and maintaining approved coastal zone management and/or restoration projects. Utilization of any and all rights derived under this lease by the mineral lessee, its agents, successors or assigns, shall not interfere with nor hinder the reasonable surface use by the Department of Natural Resources, its Offices or Commissions, as herein above reserved.

Applicant: SOUTHLAND OIL PROPERTIES INC.

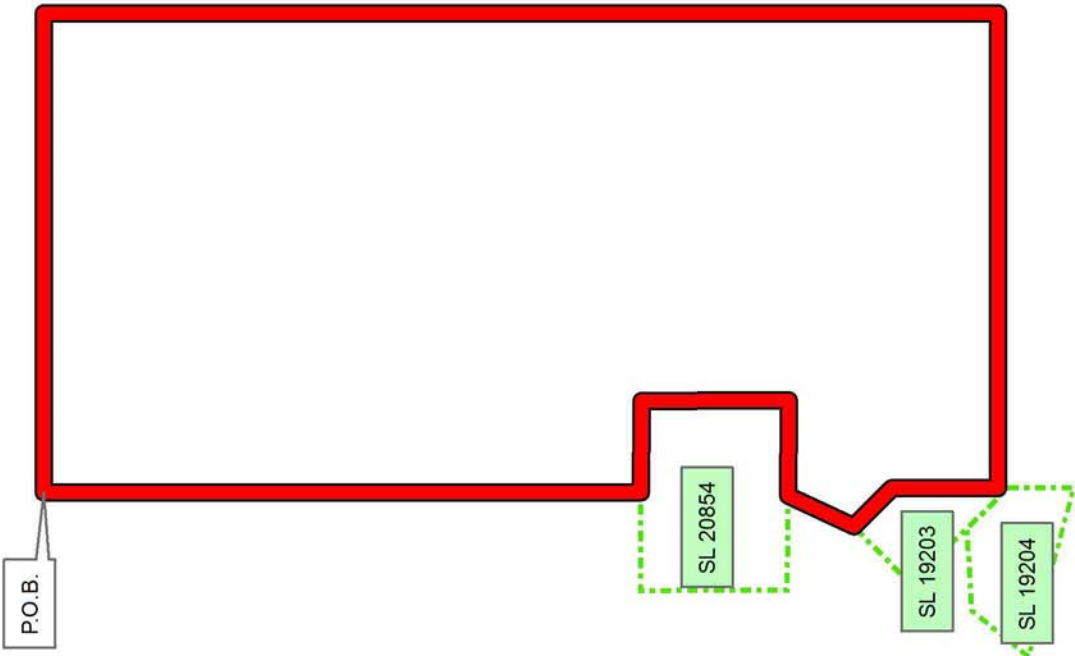
Bidder	Cash Payment	Price/Acre	Rental	Oil	Gas	Other

**Legend**  
14040006  
Active\_Leases



ST CHARLES

LAKE SALVADOR



**TRACT 43868 - St. Charles Parish, Louisiana**

All of the lands now or formerly constituting the beds and bottoms of all water bodies of every nature and description as to which title is vested in the State of Louisiana, together with all islands arising therein and other lands formed by accretion or by reliction, where allowed by law, excepting tax adjudicated lands, and not presently under mineral lease on April 9, 2014, situated in St. Charles Parish, Louisiana, and more particularly described as follows: Beginning at a point having Coordinates of X = 2,334,055.23 and Y = 387,692.38; thence East 9,846.58 feet to the Northwest corner of State Lease No. 20854 having Coordinates of X = 2,343,901.81 and Y = 387,692.38; thence along the boundaries of said State Lease No. 20854 the following courses: South 00 degrees 14 minutes 41 seconds East 2,294.49 feet to a point having Coordinates of X = 2,343,911.61 and Y = 385,397.91 and South 89 degrees 21 minutes 50 seconds East 1,481.56 feet to a point having Coordinates of X = 2,345,393.08 and Y = 385,381.46; thence South 25 degrees 20 minutes 11 seconds West 1,138.66 feet to the Northern tip of State Lease No. 19203 and the Northeast corner of the Eastern portion of State Lease No. 19232 having Coordinates of X = 2,344,905.81 and Y = 384,352.33; thence along the boundaries of said State Lease No. 19232 the following courses: South 87 degrees 35 minutes 51 seconds West 3,551.67 feet to a point having Coordinates of X = 2,341,357.26 and Y = 384,203.45, also being the Northwest corner of State Lease No. 19202, South 87 degrees 35 minutes 52 seconds West 477.86 feet to a point having Coordinates of X = 2,340,879.82 and Y = 384,183.42, South 1,676.60 feet to a point having Coordinates of X = 2,340,879.82 and Y = 382,506.82, West 2,744.82 feet to a point having Coordinates of X = 2,338,135.00 and Y = 382,506.82 and South 2,841.59 feet to the Southwest corner of the Western portion of said State Lease No. 19232 and the Northwest corner of State Lease No. 19206 having Coordinates of X = 2,338,135.00 and Y = 379,665.23; thence continue South 1,115.23 feet along the West line of said State Lease No. 19206 to the Northeast corner of State Lease No. 21341 having Coordinates of X = 2,338,135.00 and Y = 378,550.00; thence West 313.56 feet along the North boundary of said State Lease No. 21341 to its Northwest corner and the Northeast corner of State Lease No. 20851 having Coordinates of X = 2,337,821.44 and Y = 378,550.00; thence continue West 2,623.62 feet along the North boundary of said State Lease No. 20851 to its Northwest corner and a point on the east boundary of State Lease No. 19201 having Coordinates of X = 2,335,197.82 and Y = 378,550.00; thence North 20 degrees 42 minutes 16 seconds West 1,880.44 feet along the East boundary of said State Lease No. 19201 to its Northeast corner having Coordinates of X = 2,334,533.00 and Y = 380,309.00; thence North 03 degrees 42 minutes 08 seconds West 7,398.82 feet to the point of beginning, containing approximately **1379.35 acres**, all as more particularly outlined on a plat on file in the Office of Mineral Resources, Department of Natural Resources. All bearings, distances and coordinates are based on Louisiana Coordinate System of 1927, (North or South Zone), where applicable.

NOTE: The above description of the Tract nominated for lease has been provided and corrected, where required, exclusively by the nomination party. Any mineral lease selected from this Tract and awarded by the Louisiana State Mineral and Energy Board shall be without warranty of any kind, either express, implied, or statutory, including, but not limited to, the implied warranties of merchantability and fitness for a particular purpose. Should the mineral lease awarded by the Louisiana State Mineral and Energy Board be subsequently modified, cancelled or abrogated due to the existence of conflicting leases, operating agreements, private claims or other future obligations or conditions which may affect all or any portion of the leased Tract, it shall not relieve the Lessee of the obligation to pay any bonus due thereon to the Louisiana State Mineral and Energy Board, nor shall the Louisiana State Mineral and Energy Board be obligated to refund any consideration paid by the Lessor prior to such modification, cancellation, or abrogation, including, but not limited to, bonuses, rentals and royalties.

NOTE: The State of Louisiana does hereby reserve, and this lease shall be subject to, the imprescriptible right of surface use in the nature of a servitude in favor of the Department of Natural Resources, including its Offices and Commissions, for the sole purpose of implementing, constructing, servicing and maintaining approved coastal zone management and/or restoration projects. Utilization of any and all rights derived under this lease by the mineral lessee, its agents, successors or assigns, shall not interfere with nor hinder the reasonable surface use by the Department of Natural Resources, its Offices or Commissions, as herein above reserved.

Applicant: SOUTHLAND OIL PROPERTIES INC.

Bidder	Cash Payment	Price/Acre	Rental	Oil	Gas	Other

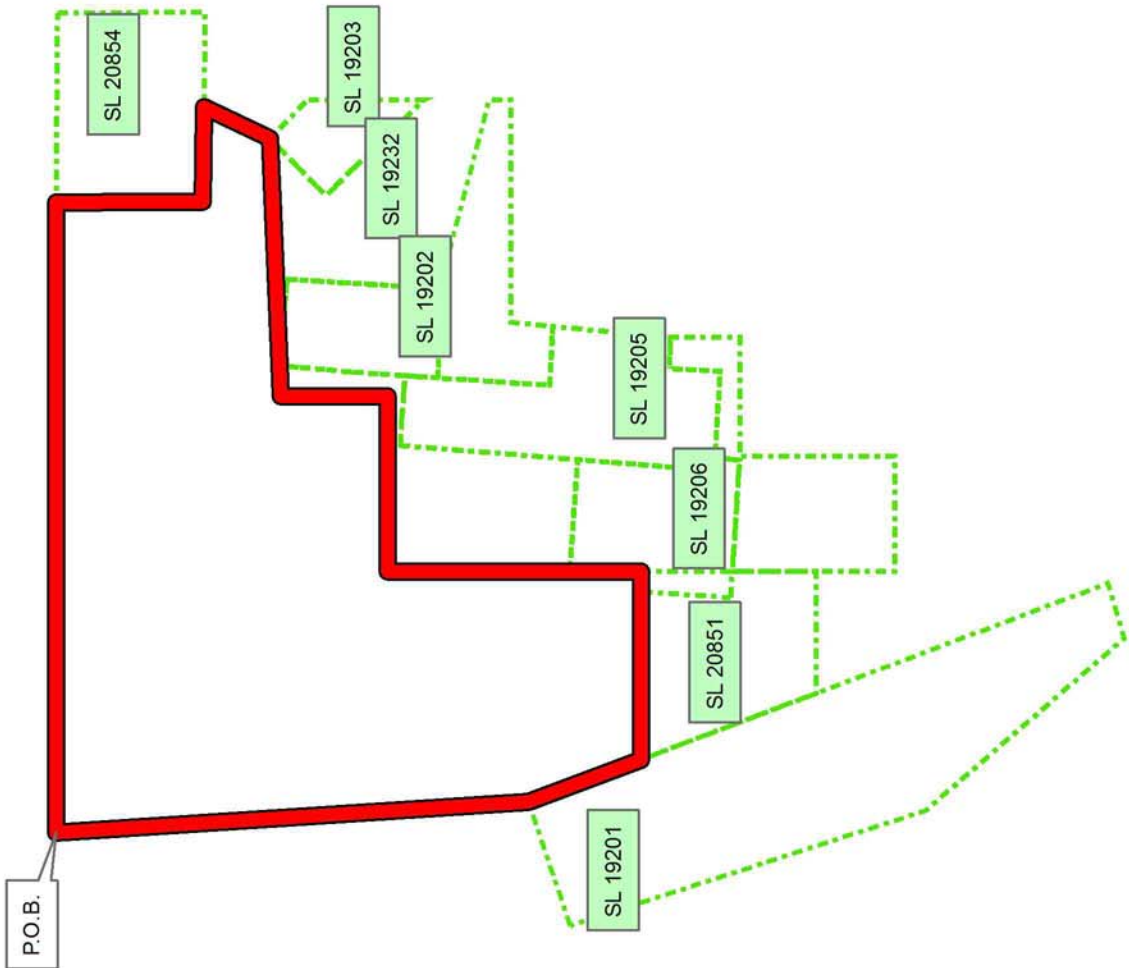
**Legend**

- 14040005
- Blocks
- Active\_Leases



ST CHARLES

LAKE SALVADOR



**TRACT 43869 - Jefferson Lafourche and St. Charles Parishes, Louisiana**

All of the lands now or formerly constituting the beds and bottoms of all water bodies of every nature and description as to which title is vested in the State of Louisiana, together with all islands arising therein and other lands formed by accretion or by reliction, where allowed by law, excepting tax adjudicated lands, and not presently under mineral lease on April 9, 2014, situated in Jefferson Lafourche and St. Charles Parishes, Louisiana, and more particularly described as follows: Beginning at a point on the East boundary of State Lease No. 19203 having Coordinates X = 2,345,510.00 and Y = 382,100.00; thence East 7,420.00 feet to a point having Coordinates of X = 2,352,930.00 and Y = 382,100.00; thence South 9,047.00 feet to a point having Coordinates of X = 2,352,930.00 and Y = 373,053.00; thence West 15,654.56 feet to a point on the East boundary of State Lease No. 19201 having Coordinates of X = 2,337,275.44 and Y = 373,053.00; thence North 20 degrees 42 minutes 16 seconds West 2,962.31 feet along the East boundary of said State Lease No. 19201 to the Southwest corner of State Lease No. 20851 having Coordinates of X = 2,336,228.13 and Y = 375,824.00; thence East 1,906.87 feet along the South boundary of said State Lease No. 20851 to its Southeast corner and a point on the West boundary of the South portion of State Lease No. 19232 having Coordinates of X = 2,338,135.00 and Y = 375,824.00; thence along the boundaries of said south portion of State Lease No. 19232 the following courses: South 1,233.67 feet to a point having Coordinates of X = 2,338,135.00 and Y = 374,590.33, East 1,800.00 feet to a point having Coordinates of X = 2,339,935.00 and Y = 374,590.33, North 2,420.00 feet to a point having Coordinates of X = 2,339,935.00 and Y = 377,010.33, East 1,858.53 feet to a point having Coordinates of X = 2,341,793.53 and Y = 377,010.33 and North 1,076.20 feet to its Northeast corner and a point on the East boundary of State Lease No. 19205 having Coordinates of X = 2,341,793.53 and Y = 378,086.53; thence North 05 degrees 25 minutes 05 seconds East 1,851.70 feet along the East boundary of said State Lease No. 19205 to a point of intersection with South boundary of the east portion of State Lease No. 19232 having Coordinates of X = 2,341,968.37 and Y = 379,929.96; thence along the boundaries of said East portion of State Lease No. 19232 the following courses: continue North 05 degrees 25 minutes 05 seconds East 665.01 feet to a point having Coordinates of X = 2,342,031.16 and Y = 380,592.00, East 3,478.84 feet to a point having Coordinates of X = 2,345,510.00 and Y = 380,592.00 and North 330.61 feet to a point on its East boundary and the Southeast corner of State Lease No. 19204 having Coordinates of X = 2,345,510.00 and Y = 380,922.61; thence continue North 1,023.13 feet along the East boundary of said State Lease No. 19204 to its Northeast corner and the Southeast corner of said State Lease No. 19203 having Coordinates of X = 2,345,510.00 and Y = 381,945.74; thence North 154.26 feet along the East boundary of said State Lease No. 19203 to the point of beginning, containing approximately **2497.81 acres**, all as more particularly outlined on a plat on file in the Office of Mineral Resources, Department of Natural Resources. All bearings, distances and coordinates are based on Louisiana Coordinate System of 1927, (North or South Zone), where applicable.

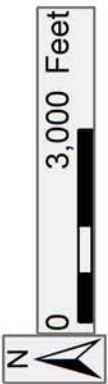
NOTE: The above description of the Tract nominated for lease has been provided and corrected, where required, exclusively by the nomination party. Any mineral lease selected from this Tract and awarded by the Louisiana State Mineral and Energy Board shall be without warranty of any kind, either express, implied, or statutory, including, but not limited to, the implied warranties of merchantability and fitness for a particular purpose. Should the mineral lease awarded by the Louisiana State Mineral and Energy Board be subsequently modified, cancelled or abrogated due to the existence of conflicting leases, operating agreements, private claims or other future obligations or conditions which may affect all or any portion of the leased Tract, it shall not relieve the Lessee of the obligation to pay any bonus due thereon to the Louisiana State Mineral and Energy Board, nor shall the Louisiana State Mineral and Energy Board be obligated to refund any consideration paid by the Lessor prior to such modification, cancellation, or abrogation, including, but not limited to, bonuses, rentals and royalties.

NOTE: The State of Louisiana does hereby reserve, and this lease shall be subject to, the imprescriptible right of surface use in the nature of a servitude in favor of the Department of Natural Resources, including its Offices and Commissions, for the sole purpose of implementing, constructing, servicing and maintaining approved coastal zone management and/or restoration projects. Utilization of any and all rights derived under this lease by the mineral lessee, its agents, successors or assigns, shall not interfere with nor hinder the reasonable surface use by the Department of Natural Resources, its Offices or Commissions, as herein above reserved.

Applicant: SOUTHLAND OIL PROPERTIES INC.

Bidder	Cash Payment	Price/Acre	Rental	Oil	Gas	Other





**Legend**

- 14040007
- Active\_Leases
- Counties

ST CHARLES

JEFFERSON

SL 19203

P.O.B.

SL 19204

SL 19205

SL 19232

SL 20851

SL 19201

LAFOURCHE

LAKE SALVADOR

**TRACT 43870 - Lafourche and St. Charles Parishes, Louisiana**

All of the lands now or formerly constituting the beds and bottoms of all water bodies of every nature and description as to which title is vested in the State of Louisiana, together with all islands arising therein and other lands formed by accretion or by reliction, where allowed by law, excepting tax adjudicated lands, and not presently under mineral lease on April 9, 2014, situated in Lafourche and St. Charles Parishes, Louisiana, and more particularly described as follows: Beginning at a point having Coordinates X = 2,305,800.00 and Y = 380,840.00; thence East 3,893.00 feet to a point on the West boundary of State Lease No. 21303 having Coordinates of X = 2,309,693.00 and Y = 380,840.00; thence along the boundaries of said State Lease No. 21303 the following courses: South 5,348.00 feet to a point having Coordinates of X = 2,309,693.00 and Y = 375,492.00 and East 1,664.62 feet to its Southeast corner and a point on the West boundary of State Lease No. 21060 having Coordinates of X = 2,311,357.62 and Y = 375,492.00; thence along the boundaries of said State Lease No 21060 the following courses: South 4,610.00 feet to a point having Coordinates of X = 2,311,357.62 and Y = 370,882.00 and East 1,600.00 feet to its Southeast corner, Southwest corner of State Lease No. 20936 and the Northwest corner of State Lease No. 20938 having Coordinates of X = 2,312,957.62 and Y = 370,882.00; thence along the boundaries of said State Lease No 20938 the following courses: South 4,055.58 feet to a point having Coordinates of X = 2,312,957.62 and Y = 366,826.42, East 3,992.38 feet to a point having Coordinates of X = 2,316,950.00 and Y = 366,826.42 and North 305.34 feet to the Southwest corner of State Lease No. 21283 having Coordinates of X = 2,316,950.00 and Y = 367,131.76; thence along the boundaries of said State Lease No 21283 the following courses: East 1,469.50 feet to a point having Coordinates of X = 2,318,419.50 and Y = 367,131.76 and North 2,738.24 feet to its Northeast corner and a point on the South boundary of said State Lease No. 20938 having Coordinates of X = 2,318,419.50 and Y = 369,870.00; thence East 2,830.50 feet along the South boundary of said State Lease No. 20938 to its Southeast corner and a point on the West boundary of State Lease No. 20877 having Coordinates of X = 2,321,250.00 and Y = 369,870.00; thence along the boundaries of said State Lease No 20877 the following courses: South 3,185.74 feet to a point having Coordinates of X = 2,321,250.00 and Y = 366,684.26 and East 1,633.10 feet to its Southeast corner and the Southwest corner of State Lease No. 21342 having Coordinates of X = 2,322,883.10 and Y = 366,684.26; thence continue East 1,396.90 feet to a point having Coordinates of X = 2,324,280.00 and Y = 366,684.26; thence South 2,014.26 feet to a point having Coordinates of X = 2,324,280.00 and Y = 364,670.00; thence West 18,480.00 feet to a point having Coordinates of X = 2,305,800.00 and Y = 364,670.00; thence North 16,170.00 feet to the point of beginning, containing approximately **222 acres**, all as more particularly outlined on a plat on file in the Office of Mineral Resources, Department of Natural Resources. All bearings, distances and coordinates are based on Louisiana Coordinate System of 1927, (North or South Zone), where applicable.

NOTE: The above description of the Tract nominated for lease has been provided and corrected, where required, exclusively by the nomination party. Any mineral lease selected from this Tract and awarded by the Louisiana State Mineral and Energy Board shall be without warranty of any kind, either express, implied, or statutory, including, but not limited to, the implied warranties of merchantability and fitness for a particular purpose. Should the mineral lease awarded by the Louisiana State Mineral and Energy Board be subsequently modified, cancelled or abrogated due to the existence of conflicting leases, operating agreements, private claims or other future obligations or conditions which may affect all or any portion of the leased Tract, it shall not relieve the Lessee of the obligation to pay any bonus due thereon to the Louisiana State Mineral and Energy Board, nor shall the Louisiana State Mineral and Energy Board be obligated to refund any consideration paid by the Lessor prior to such modification, cancellation, or abrogation, including, but not limited to, bonuses, rentals and royalties.

NOTE: A portion of this tract is located on or adjacent to a Louisiana designated Natural and Scenic River. The applicant must obtain authorization from the Louisiana Department of Wildlife and Fisheries, Scenic Rivers Program prior to initiating any activities within or adjacent to the river, including, but not limited to, crossings by roads and pipelines, well sites, production facilities and water withdrawals.

NOTE: The State of Louisiana does hereby reserve, and this lease shall be subject to, the imprescriptible right of surface use in the nature of a servitude in favor of the Department of Natural Resources, including its Offices and Commissions, for the sole purpose of implementing, constructing, servicing and maintaining approved coastal zone management and/or restoration projects. Utilization of any and all rights derived under this lease by the mineral lessee, its agents, successors or assigns, shall not interfere with nor hinder the reasonable surface use by the Department of Natural Resources, its Offices or Commissions, as herein above reserved.

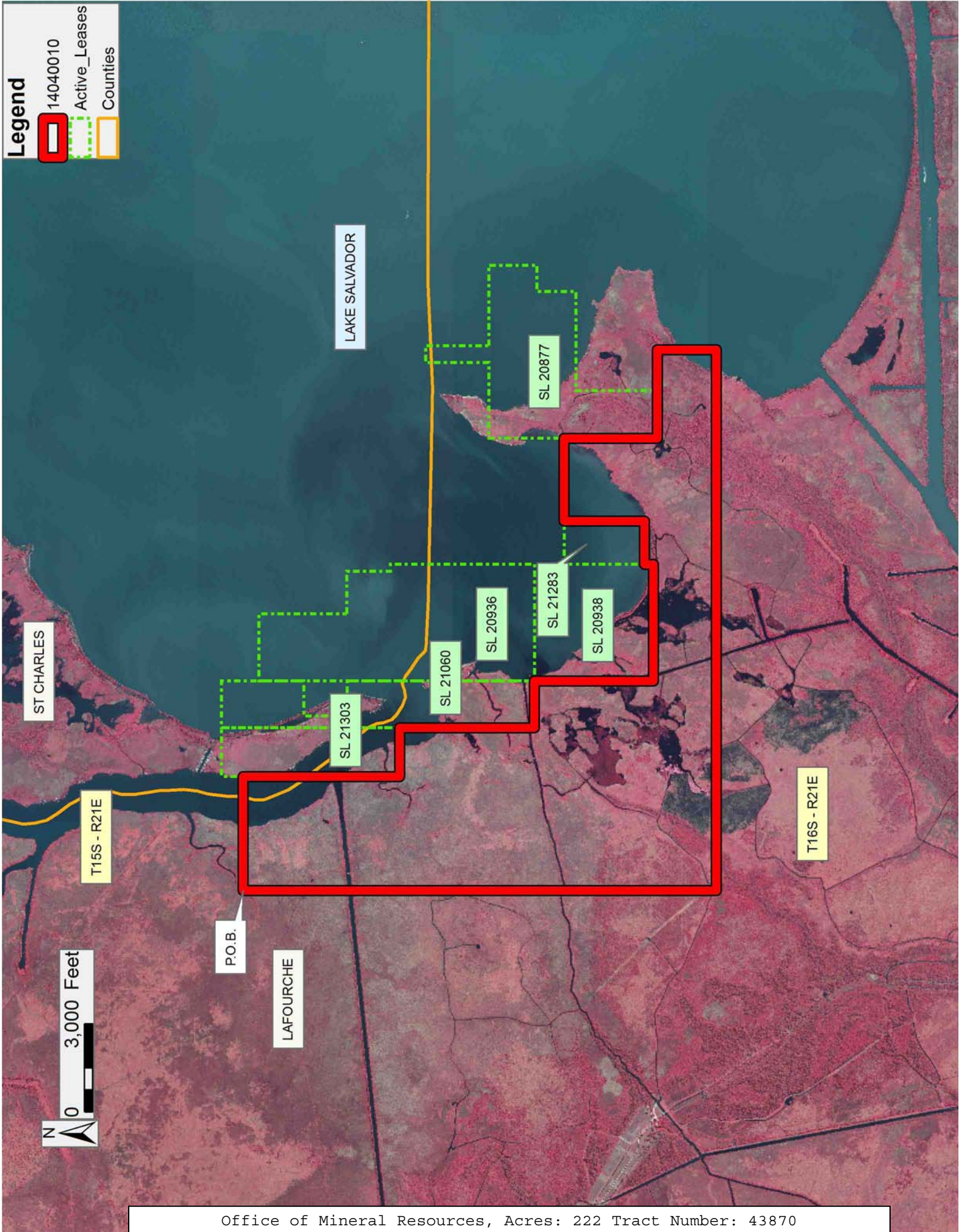
Applicant: SOUTHLAND OIL PROPERTIES INC.

Bidder	Cash Payment	Price/Acre	Rental	Oil	Gas	Other



**Legend**

- 14040010
- Active\_Leases
- Counties



**TRACT 43871 - Lafourche Parish, Louisiana**

All of the lands now or formerly constituting the beds and bottoms of all water bodies of every nature and description as to which title is vested in the State of Louisiana, together with all islands arising therein and other lands formed by accretion or by reliction, where allowed by law, excepting tax adjudicated lands, and not presently under mineral lease on April 9, 2014, situated in Lafourche Parish, Louisiana, and more particularly described as follows: Beginning at a point on the East boundary of State Lease No. 19201 having Coordinates X = 2,337,275.44 and Y = 373,053.00; thence East 2,282.59 feet to a point having Coordinates of X = 2,339,558.03 and Y = 373,053.00; thence South 8,383.00 feet to a point having Coordinates of X = 2,339,558.03 and Y = 364,670.00; thence West 15,278.03 feet to a point having Coordinates of X = 2,324,280.00 and Y = 364,670.00; thence North 2,014.26 feet to a point on the South boundary of State Lease No. 21342 having Coordinates of X = 2,324,280.00 and Y = 366,684.26; thence along the boundaries of said State Lease No. 21342 the following courses: East 2,884.70 feet to a point having Coordinates of X = 2,327,164.70 and Y = 366,684.26, North 2,784.89 feet to a point having Coordinates of X = 2,327,164.70 and Y = 369,469.15 and West 899.35 feet to the Southwest corner of State Lease No. 20877 having Coordinates of X = 2,326,265.35 and Y = 369,469.15; thence along the boundaries of said State Lease No. 20877 the following courses: North 1,332.55 feet to a point having Coordinates of X = 2,326,265.35 and Y = 370,801.70, East 899.35 feet to a point having Coordinates of X = 2,327,164.70 and Y = 370,801.70 and North 1,222.60 feet to a point on the South boundary of State Lease No. 21184 having Coordinates of X = 2,327,164.70 and Y = 372,024.30; thence along the boundaries of said State Lease No. 21184 the following courses: East 1,892.87 feet to a point having Coordinates of X = 2,329,057.57 and Y = 372,024.30, North 57 degrees 08 minutes 30 seconds East 2,198.51 feet to a point having Coordinates of X = 2,330,904.35 and Y = 373,217.13, North 35 degrees 03 minutes 11 seconds East 223.38 feet to a point having Coordinates of X = 2,331,032.65 and Y = 373,400.00 and North 733.00 feet to its Northeast corner and a point on the South boundary of State Lease No. 20856 having Coordinates of X = 2,331,032.65 and Y = 374,133.00; thence East 3,358.27 feet along the South boundary of said State Lease No. 20856 to its Southeast corner and a point on the West boundary of said State Lease No. 19201 having Coordinates of X = 2,334,390.92 and Y = 374,133.00; thence along the boundaries of said State Lease No. 19201 the following courses: South 17 degrees 57 minutes 51 seconds East 29.43 feet to a point having Coordinates of X = 2,334,400.00 and Y = 374,105.00, South 40 degrees 57 minutes 13 seconds East 4,108.63 feet to a point having Coordinates of X = 2,337,093.00 and Y = 371,002.00, North 73 degrees 38 minutes 34 seconds East 898.36 feet to a point having Coordinates of X = 2,337,955.00 and Y = 371,255.00 and North 20 degrees 42 minutes 16 seconds West 1,922.14 feet to the point of beginning, containing approximately **2497 acres**, all as more particularly outlined on a plat on file in the Office of Mineral Resources, Department of Natural Resources. All bearings, distances and coordinates are based on Louisiana Coordinate System of 1927, (North or South Zone), where applicable.

NOTE: The above description of the Tract nominated for lease has been provided and corrected, where required, exclusively by the nomination party. Any mineral lease selected from this Tract and awarded by the Louisiana State Mineral and Energy Board shall be without warranty of any kind, either express, implied, or statutory, including, but not limited to, the implied warranties of merchantability and fitness for a particular purpose. Should the mineral lease awarded by the Louisiana State Mineral and Energy Board be subsequently modified, cancelled or abrogated due to the existence of conflicting leases, operating agreements, private claims or other future obligations or conditions which may affect all or any portion of the leased Tract, it shall not relieve the Lessee of the obligation to pay any bonus due thereon to the Louisiana State Mineral and Energy Board, nor shall the Louisiana State Mineral and Energy Board be obligated to refund any consideration paid by the Lessor prior to such modification, cancellation, or abrogation, including, but not limited to, bonuses, rentals and royalties.

NOTE: The State of Louisiana does hereby reserve, and this lease shall be subject to, the imprescriptible right of surface use in the nature of a servitude in favor of the Department of Natural Resources, including its Offices and Commissions, for the sole purpose of implementing, constructing, servicing and maintaining approved coastal zone management and/or restoration projects. Utilization of any and all rights derived under this lease by the mineral lessee, its agents, successors or assigns, shall not interfere with nor hinder the reasonable surface use by the Department of Natural Resources, its Offices or Commissions, as herein above reserved.

Applicant: SOUTHLAND OIL PROPERTIES INC.

Bidder	Cash Payment	Price/Acre	Rental	Oil	Gas	Other



**Legend**

14040009



Active\_Leases



3,000 Feet

0

LAFOURCHE

LAKE SALVADOR

T16S - R22E

T16S - R21E

P.O.B.

SL 19201

ST CHARLES

SL 20856

SL 21184

SL 20877

**TRACT 43872 - Lafourche Parish, Louisiana**

All of the lands now or formerly constituting the beds and bottoms of all water bodies of every nature and description as to which title is vested in the State of Louisiana, together with all islands arising therein and other lands formed by accretion or by reliction, where allowed by law, excepting tax adjudicated lands, and not presently under mineral lease on April 9, 2014, situated in Lafourche Parish, Louisiana, and more particularly described as follows: Beginning at a point having Coordinates X = 2,339,558.03 and Y = 373,053.00; thence East 13,371.97 feet to a point having Coordinates of X = 2,352,930.00 and Y = 373,053.00; thence South 8,383.00 feet to a point having Coordinates of X = 2,352,930.00 and Y = 364,670.00; thence West 13,371.97 feet to a point having Coordinates of X = 2,339,558.03 and Y = 364,670.00; thence North 8,383.00 feet to the point of beginning, containing approximately **2499 acres**, all as more particularly outlined on a plat on file in the Office of Mineral Resources, Department of Natural Resources. All bearings, distances and coordinates are based on Louisiana Coordinate System of 1927, (North or South Zone), where applicable.

NOTE: The above description of the Tract nominated for lease has been provided and corrected, where required, exclusively by the nomination party. Any mineral lease selected from this Tract and awarded by the Louisiana State Mineral and Energy Board shall be without warranty of any kind, either express, implied, or statutory, including, but not limited to, the implied warranties of merchantability and fitness for a particular purpose. Should the mineral lease awarded by the Louisiana State Mineral and Energy Board be subsequently modified, cancelled or abrogated due to the existence of conflicting leases, operating agreements, private claims or other future obligations or conditions which may affect all or any portion of the leased Tract, it shall not relieve the Lessee of the obligation to pay any bonus due thereon to the Louisiana State Mineral and Energy Board, nor shall the Louisiana State Mineral and Energy Board be obligated to refund any consideration paid by the Lessor prior to such modification, cancellation, or abrogation, including, but not limited to, bonuses, rentals and royalties.

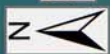
NOTE: The State of Louisiana does hereby reserve, and this lease shall be subject to, the imprescriptible right of surface use in the nature of a servitude in favor of the Department of Natural Resources, including its Offices and Commissions, for the sole purpose of implementing, constructing, servicing and maintaining approved coastal zone management and/or restoration projects. Utilization of any and all rights derived under this lease by the mineral lessee, its agents, successors or assigns, shall not interfere with nor hinder the reasonable surface use by the Department of Natural Resources, its Offices or Commissions, as herein above reserved.



Applicant: SOUTHLAND OIL PROPERTIES INC.

Bidder	Cash Payment	Price/Acre	Rental	Oil	Gas	Other

**Legend**



0 3,000 Feet

ST CHARLES

JEFFERSON

P.O.B.

LAKE SALVADOR

LAFOURCHE

T16S - R22E



**TRACT 43873 - Plaquemines Parish, Louisiana**

All of the lands now or formerly constituting the beds and bottoms of all water bodies of every nature and description as to which title is vested in the State of Louisiana, together with all islands arising therein and other lands formed by accretion or by reliction, where allowed by law, excepting tax adjudicated lands, and not presently under mineral lease on April 9, 2014, situated in Plaquemines Parish, Louisiana, and more particularly described as follows: Beginning at the Northeast corner of State Lease No. 20564 having Coordinates of X = 2,622,126.83 and Y = 193,904.23; thence North 88 degrees 26 minutes 33 seconds East 4,440.82 feet to the Southwest corner of State Lease No. 15918, as amended having Coordinates of X = 2,626,566.01 and Y = 194,024.93; thence North 88 degrees 16 minutes 10 seconds East 4,619.99 feet along the south boundary of said State Lease No. 15918 to its Southeast corner and a point on the west boundary of State Lease No. 17382 having Coordinates of X = 2,631,183.89 and Y = 194,164.45; thence along the boundaries of said State Lease No. 17382 the following courses: South 01 degrees 42 minutes 53 seconds East 1,319.98 feet to a point having Coordinates of X = 2,631,223.39 and Y = 192,845.06, North 88 degrees 17 minutes 08 seconds East 2,640.00 feet to a point having Coordinates of X = 2,633,862.21 and Y = 192,924.05 and North 01 degrees 42 minutes 53 seconds West 1,336.55 feet to a point having Coordinates of X = 2,633,822.22 and Y = 194,260.01; thence North 87 degrees 58 minutes 44 seconds East 2,636.82 feet to a point having Coordinates of X = 2,636,457.39 and Y = 194,353.00; thence southerly approximately 10,572 feet to a point on the north boundary of State Lease No. 451, as amended; thence westerly approximately 7,790 feet to the Southeast corner of State Lease No. 2203, as amended; thence along the boundaries of said State Lease No. 2203 the following courses: Northerly approximately 2,752 feet to a point, Westerly approximately 2,778 feet to a point, Northerly approximately 2,640 feet to a point, Westerly approximately 2,640 feet to a point, Northerly approximately 2,640 feet to a point and Westerly approximately 1,143 feet to the Southeast corner of said State Lease No. 20564; thence North 01 degrees 43 minutes 25 seconds West approximately 2,653 feet along the east boundary of said State Lease No. 20564 to the point of beginning, containing approximately **2,237 acres**, all as more particularly outlined on a plat on file in the Office of Mineral Resources, Department of Natural Resources. All bearings, distances and coordinates are based on Louisiana Coordinate System of 1927, (North or South Zone), where applicable.

NOTE: The above description of the Tract nominated for lease has been provided and corrected, where required, exclusively by the nomination party. Any mineral lease selected from this Tract and awarded by the Louisiana State Mineral and Energy Board shall be without warranty of any kind, either express, implied, or statutory, including, but not limited to, the implied warranties of merchantability and fitness for a particular purpose. Should the mineral lease awarded by the Louisiana State Mineral and Energy Board be subsequently modified, cancelled or abrogated due to the existence of conflicting leases, operating agreements, private claims

or other future obligations or conditions which may affect all or any portion of the leased Tract, it shall not relieve the Lessee of the obligation to pay any bonus due thereon to the Louisiana State Mineral and Energy Board, nor shall the Louisiana State Mineral and Energy Board be obligated to refund any consideration paid by the Lessor prior to such modification, cancellation, or abrogation, including, but not limited to, bonuses, rentals and royalties.

NOTE: The State of Louisiana does hereby reserve, and this lease shall be subject to, the imprescriptible right of surface use in the nature of a servitude in favor of the Department of Natural Resources, including its Offices and Commissions, for the sole purpose of implementing, constructing, servicing and maintaining approved coastal zone management and/or restoration projects. Utilization of any and all rights derived under this lease by the mineral lessee, its agents, successors or assigns, shall not interfere with nor hinder the reasonable surface use by the Department of Natural Resources, its Offices or Commissions, as herein above reserved.

Applicant: MARK A. O'NEAL & ASSOCIATES, INC.

Bidder	Cash Payment	Price/Acre	Rental	Oil	Gas	Other



**Legend**

- 14040044
- Freeze Statute
- State Claimable Waterbottoms
- Active\_Leases

GULF OF MEXICO

PLAQUEMINES

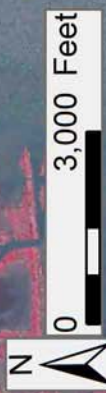
SL 17382

SL 15918

SL 451

SL 2203

P.O.B.



**TRACT 43874 - Plaquemines Parish, Louisiana**

All of the lands now or formerly constituting the beds and bottoms of all water bodies of every nature and description as to which title is vested in the State of Louisiana, together with all islands arising therein and other lands formed by accretion or by reliction, where allowed by law, excepting tax adjudicated lands, and not presently under mineral lease on April 9, 2014, situated in Plaquemines Parish, Louisiana, and more particularly described as follows: Beginning at the Southeast corner of State Lease No. 2203, as amended, also being a point on the north boundary of State Lease No. 451, as amended; thence westerly along the boundaries of said State Lease No. 2203 and 451 approximately 5446 feet to a point; thence northerly approximately 5,373 feet to a point of intersection with the east boundary of said State Lease No. 2203; thence along the boundaries of said State Lease No. 2203 the following courses: Easterly approximately 2,640 feet to a point, Southerly approximately 2,640 feet to a point, Easterly 2,778 feet to a point and Southerly 2,752 feet to the point of beginning, **LESS AND EXCEPT** all that portion of State Lease No. 2203 that lies within the above described tract, containing approximately **479 acres**, all as more particularly outlined on a plat on file in the Office of Mineral Resources, Department of Natural Resources. All bearings, distances and coordinates are based on Louisiana Coordinate System of 1927, (North or South Zone), where applicable.

NOTE: The above description of the Tract nominated for lease has been provided and corrected, where required, exclusively by the nomination party. Any mineral lease selected from this Tract and awarded by the Louisiana State Mineral and Energy Board shall be without warranty of any kind, either express, implied, or statutory, including, but not limited to, the implied warranties of merchantability and fitness for a particular purpose. Should the mineral lease awarded by the Louisiana State Mineral and Energy Board be subsequently modified, cancelled or abrogated due to the existence of conflicting leases, operating agreements, private claims or other future obligations or conditions which may affect all or any portion of the leased Tract, it shall not relieve the Lessee of the obligation to pay any bonus due thereon to the Louisiana State Mineral and Energy Board, nor shall the Louisiana State Mineral and Energy Board be obligated to refund any consideration paid by the Lessor prior to such modification, cancellation, or abrogation, including, but not limited to, bonuses, rentals and royalties.

NOTE: The State of Louisiana does hereby reserve, and this lease shall be subject to, the imprescriptible right of surface use in the nature of a servitude in favor of the Department of Natural Resources, including its Offices and Commissions, for the sole purpose of implementing, constructing, servicing and maintaining approved coastal zone management and/or restoration projects. Utilization of any and all rights derived under this lease by the mineral lessee, its agents, successors or assigns, shall not interfere with nor hinder the reasonable surface use by the

Department of Natural Resources, its Offices or Commissions, as herein above reserved.

Applicant: MARK A. O'NEAL & ASSOCIATES, INC.

Bidder	Cash Payment	Price/Acre	Rental	Oil	Gas	Other



**Legend**

- 14040043
- Freeze Statute
- State Claimable Waterbottoms
- Active\_Leases

