

**TRACT 43875 - Lasalle Parish School Board and Rapides Parish School Board
- Lasalle and Rapides Parishes, Louisiana**

The State Mineral and Energy Board acting on behalf of the Lasalle Parish School Board and Rapides Parish School Board, pursuant to Resolution(s) adopted by that (those) body(ies) and in accordance with Louisiana Revised Statutes 30:121-136 and 151-156, as amended, and Article XIV, Section 16(A)(9) and (B) of the Louisiana Constitution of 1974, as same may be continued and promulgated in proper statutory form and, further, amended from time to time, advertises the lands not under mineral lease on April 9, 2014, excluding the beds and bottoms of all navigable water bodies located within the following: All or a portion of Section 16, Township 05 North, Range 03 East in Lasalle and Rapides Parishes, Louisiana, **LESS AND EXCEPT** State Agency Lease No. 21264, being the Northeast Quarter (NE/4) of the Northwest Quarter (NW/4), said nominated tract containing approximately **600.24 acres**, all as more particularly outlined on a plat on file in the Office of Mineral Resources, Department of Natural Resources. All bearings, distances and coordinates are based on Louisiana Coordinate System of 1927, (North or South Zone).

NOTE: The above description of the Tract nominated for lease has been provided and corrected, where required, exclusively by the nomination party. Any mineral lease selected from this Tract and awarded by the Louisiana State Mineral and Energy Board shall be without warranty of any kind, either express, implied, or statutory, including, but not limited to, the implied warranties of merchantability and fitness for a particular purpose. Should the mineral lease awarded by the Louisiana State Mineral and Energy Board be subsequently modified, cancelled or abrogated due to the existence of conflicting leases, operating agreements, private claims or other future obligations or conditions which may affect all or any portion of the leased Tract, it shall not relieve the Lessee of the obligation to pay any bonus due thereon to the Louisiana State Mineral and Energy Board, nor shall the Louisiana State Mineral and Energy Board be obligated to refund any consideration paid by the Lessor prior to such modification, cancellation, or abrogation, including, but not limited to, bonuses, rentals and royalties.

NOTE: There will be a minimum of \$400 per acre for a period of three (3) years.

NOTE: There will be a minimum of 22.5% at the well head with no expense deductions.

NOTE: No surface activities shall take place on the property without the prior written consent of Rapides and LaSalle Parish School Boards.

NOTE: Lessors acknowledge that said Township 5 North, Range 3 East, is located 72.50% in the Parish of Rapides and 27.50% in the Parish of LaSalle; and Lessee is authorized and directed to pay any and all rentals and royalties which may accrue under the terms of this lease to Lessors

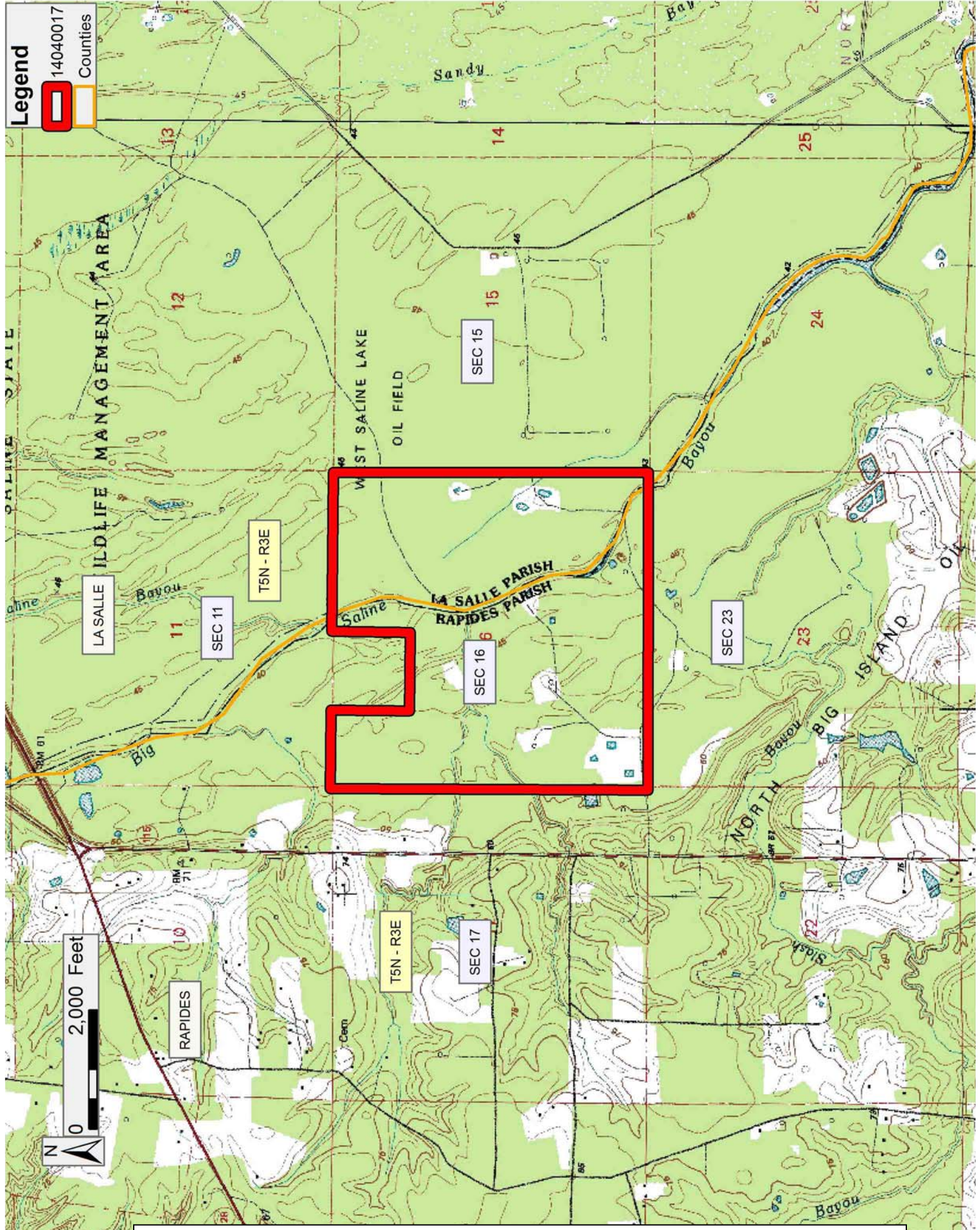
separately and in the following proportions: Rapides Parish School Board - 72.50% and LaSalle Parish School Board - 27.50% and prospective bidders are hereby placed on notice that execution by the State Mineral Board of oil, gas and mineral lease on behalf of the Rapides Parish School Board and the LaSalle Parish School Board on the above described portion of section shall not be construed as a waiver by the State Mineral Board of any rights that it may have to lease for and on behalf of the State of Louisiana any navigable water bottoms that might be included within said portion of said section

Applicant: THEOPHILUS OIL, GAS & LAND SERVICES, LLC to Agency and by Resolution from the Lasalle Parish School Board and Rapides Parish School Board authorizing the Mineral Board to act in its behalf

Bidder	Cash Payment	Price/Acre	Rental	Oil	Gas	Other

Legend

- 14040017
- Counties



Office of Mineral Resources, Acres: 600.24 Tract Number: 43875