

TRACT 43878 - Assumption Parish, Louisiana

All lands, including lands now or formerly constituting the beds and bottoms of all water bodies of every nature and description, owned by and not presently under mineral lease as of April 9, 2014 from the State of Louisiana, situated in Assumption Parish, Louisiana, and being more fully described as follows: All those portions of lots 9 and 10, Section 14, Township 12 South, Range 12 East, Assumption Parish, lying within the following described tract, beginning at a point having Coordinates of X = 2,034,910.00 and Y = 491,560.00; thence East 500.00 feet to a point having Coordinates of X = 2,035,410.00 and Y = 491,560.00; thence South 600.00 feet to a point having Coordinates of X = 2,035,410.00 and Y = 490,960.00; thence West 500.00 feet to a point having Coordinates of X = 2,034,910.00 and Y = 490,960.00; thence North 600.00 feet to the point of beginning, containing approximately **1.08 acres**, all as more particularly outlined on a plat on file in the Office of Mineral Resources, Department of Natural Resources. All bearings, distances and coordinates are based on Louisiana Coordinate System of 1927, (North or South Zone), where applicable.

NOTE: The above description of the Tract nominated for lease has been provided and corrected, where required, exclusively by the nomination party. Any mineral lease selected from this Tract and awarded by the Louisiana State Mineral and Energy Board shall be without warranty of any kind, either express, implied, or statutory, including, but not limited to, the implied warranties of merchantability and fitness for a particular purpose. Should the mineral lease awarded by the Louisiana State Mineral and Energy Board be subsequently modified, cancelled or abrogated due to the existence of conflicting leases, operating agreements, private claims or other future obligations or conditions which may affect all or any portion of the leased Tract, it shall not relieve the Lessee of the obligation to pay any bonus due thereon to the Louisiana State Mineral and Energy Board, nor shall the Louisiana State Mineral and Energy Board be obligated to refund any consideration paid by the Lessor prior to such modification, cancellation, or abrogation, including, but not limited to, bonuses, rentals and royalties.

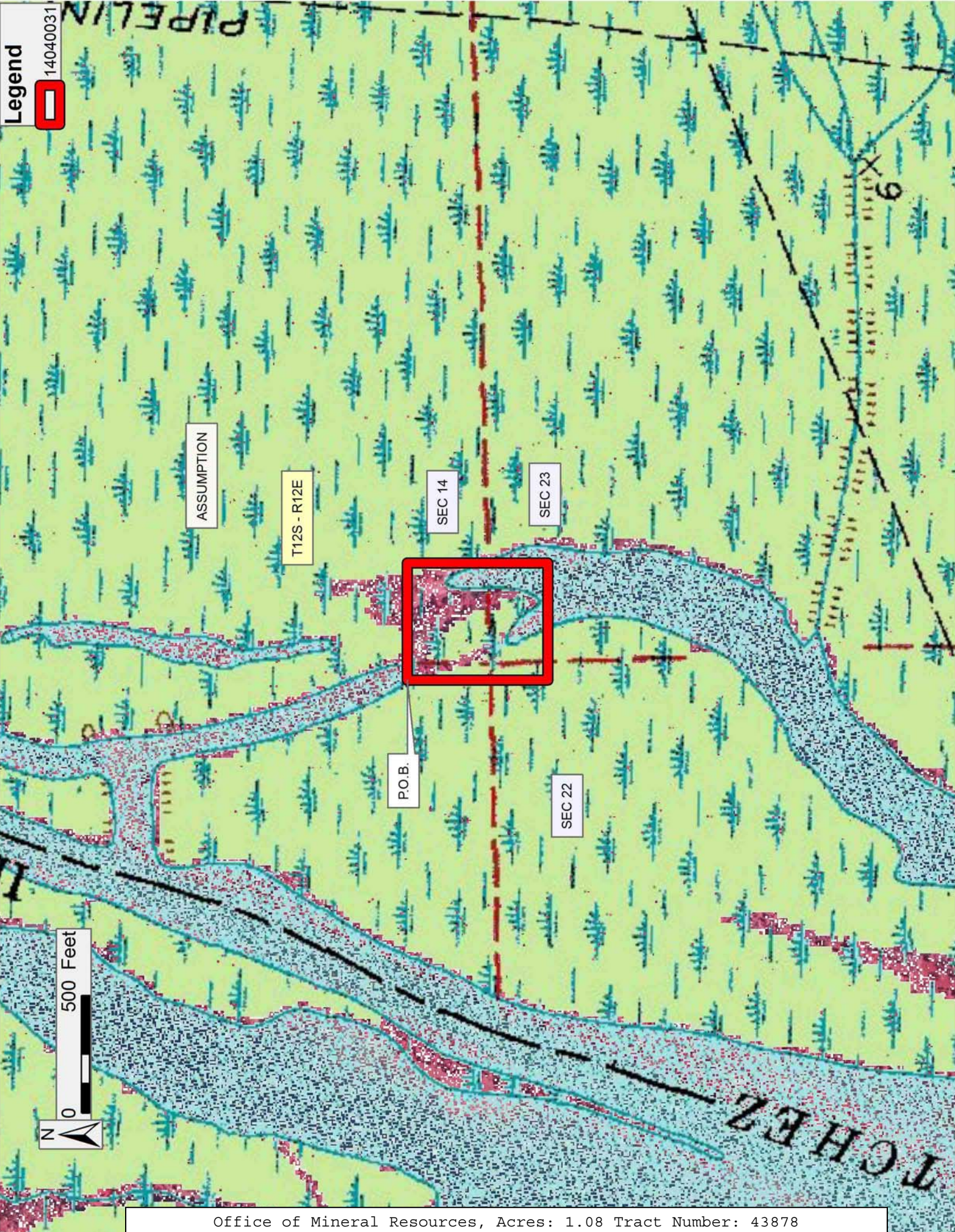
NOTE: The State of Louisiana does hereby reserve, and this lease shall be subject to, the imprescriptible right of surface use in the nature of a servitude in favor of the Department of Natural Resources, including its Offices and Commissions, for the sole purpose of implementing, constructing, servicing and maintaining approved coastal zone management and/or restoration projects. Utilization of any and all rights derived under this lease by the mineral lessee, its agents, successors or assigns, shall not interfere with nor hinder the reasonable surface use by the Department of Natural Resources, its Offices or Commissions, as herein above reserved.

Applicant: THEOPHILUS OIL, GAS & LAND SERVICES, LLC

Bidder	Cash Payment	Price/Acre	Rental	Oil	Gas	Other

Legend

14040031



ASSUMPTION

T12S - R12E

SEC 14

SEC 23

P.O.B.

SEC 22

500 Feet



TRACT 43879 - Assumption Parish, Louisiana

All lands, including lands now or formerly constituting the beds and bottoms of all water bodies of every nature and description, owned by and not presently under mineral lease as of April 9, 2014 from the State of Louisiana, situated in Assumption Parish, Louisiana, and being more fully described as follows: All those portions of lots 1, 2, 3, 4 and 5, Section 22, Township 12 South, Range 12 East, Assumption Parish, lying within the following described tract, beginning at a point having Coordinates of X = 2,031,750.00 and Y = 491,210.00; thence East 3,310.00 feet to a point having Coordinates of X = 2,035,060.00 and Y = 491,210.00; thence South 5,000.00 feet to a point having Coordinates of X = 2,035,060.00 and Y = 486,210.00; thence West 3,310.00 feet to a point having Coordinates of X = 2,031,750.00 and Y = 486,210.00; thence North 5,000.00 feet to the point of beginning, containing approximately **97.15 acres**, all as more particularly outlined on a plat on file in the Office of Mineral Resources, Department of Natural Resources. All bearings, distances and coordinates are based on Louisiana Coordinate System of 1927, (North or South Zone), where applicable.

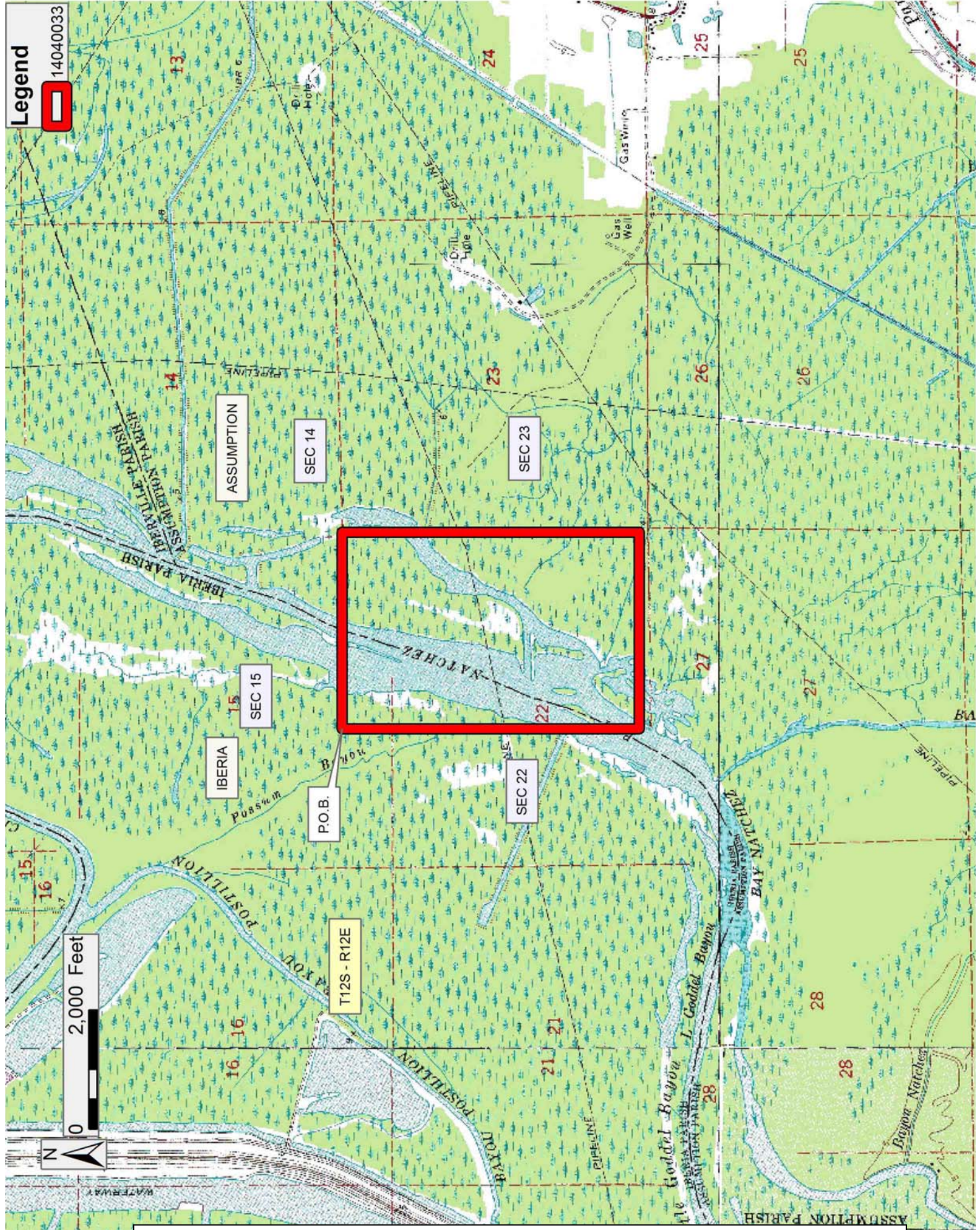
NOTE: The above description of the Tract nominated for lease has been provided and corrected, where required, exclusively by the nomination party. Any mineral lease selected from this Tract and awarded by the Louisiana State Mineral and Energy Board shall be without warranty of any kind, either express, implied, or statutory, including, but not limited to, the implied warranties of merchantability and fitness for a particular purpose. Should the mineral lease awarded by the Louisiana State Mineral and Energy Board be subsequently modified, cancelled or abrogated due to the existence of conflicting leases, operating agreements, private claims or other future obligations or conditions which may affect all or any portion of the leased Tract, it shall not relieve the Lessee of the obligation to pay any bonus due thereon to the Louisiana State Mineral and Energy Board, nor shall the Louisiana State Mineral and Energy Board be obligated to refund any consideration paid by the Lessor prior to such modification, cancellation, or abrogation, including, but not limited to, bonuses, rentals and royalties.

NOTE: The State of Louisiana does hereby reserve, and this lease shall be subject to, the imprescriptible right of surface use in the nature of a servitude in favor of the Department of Natural Resources, including its Offices and Commissions, for the sole purpose of implementing, constructing, servicing and maintaining approved coastal zone management and/or restoration projects. Utilization of any and all rights derived under this lease by the mineral lessee, its agents, successors or assigns, shall not interfere with nor hinder the reasonable surface use by the Department of Natural Resources, its Offices or Commissions, as herein above reserved.

Applicant: THEOPHILUS OIL, GAS & LAND SERVICES, LLC

Bidder	Cash Payment	Price/Acre	Rental	Oil	Gas	Other

Legend
14040033



TRACT 43880 - Assumption Parish, Louisiana

All lands, including lands now or formerly constituting the beds and bottoms of all water bodies of every nature and description, owned by and not presently under mineral lease as of April 9, 2014 from the State of Louisiana, situated in Assumption Parish, Louisiana, and being more fully described as follows: All those portions of lots 8 and 9, Section 23, Township 12 South, Range 12 East, Assumption Parish, lying within the following described tract, beginning at a point having Coordinates of X = 2,034,910.00 and Y = 491,210.00; thence East 500.00 feet to a point having Coordinates of X = 2,035,410.00 and Y = 491,210.00; thence South 1,000.00 feet to a point having Coordinates of X = 2,035,410.00 and Y = 490,210.00; thence West 500.00 feet to a point having Coordinates of X = 2,034,910.00 and Y = 490,210.00; thence North 1,000.00 feet to the point of beginning, containing approximately **2.08 acres**, all as more particularly outlined on a plat on file in the Office of Mineral Resources, Department of Natural Resources. All bearings, distances and coordinates are based on Louisiana Coordinate System of 1927, (North or South Zone), where applicable.

NOTE: The above description of the Tract nominated for lease has been provided and corrected, where required, exclusively by the nomination party. Any mineral lease selected from this Tract and awarded by the Louisiana State Mineral and Energy Board shall be without warranty of any kind, either express, implied, or statutory, including, but not limited to, the implied warranties of merchantability and fitness for a particular purpose. Should the mineral lease awarded by the Louisiana State Mineral and Energy Board be subsequently modified, cancelled or abrogated due to the existence of conflicting leases, operating agreements, private claims or other future obligations or conditions which may affect all or any portion of the leased Tract, it shall not relieve the Lessee of the obligation to pay any bonus due thereon to the Louisiana State Mineral and Energy Board, nor shall the Louisiana State Mineral and Energy Board be obligated to refund any consideration paid by the Lessor prior to such modification, cancellation, or abrogation, including, but not limited to, bonuses, rentals and royalties.

NOTE: The State of Louisiana does hereby reserve, and this lease shall be subject to, the imprescriptible right of surface use in the nature of a servitude in favor of the Department of Natural Resources, including its Offices and Commissions, for the sole purpose of implementing, constructing, servicing and maintaining approved coastal zone management and/or restoration projects. Utilization of any and all rights derived under this lease by the mineral lessee, its agents, successors or assigns, shall not interfere with nor hinder the reasonable surface use by the Department of Natural Resources, its Offices or Commissions, as herein above reserved.

Applicant: THEOPHILUS OIL, GAS & LAND SERVICES, LLC

Bidder	Cash Payment	Price/Acre	Rental	Oil	Gas	Other

Legend

14040032



ASSUMPTION

T12S - R12E

SEC 14

SEC 23

P.O.B.

SEC 22

500 Feet



INATCHEZ