

TRACT 43884 - De Soto Parish, Louisiana

The mineral rights only under land previously sold after 1921, but to which the mineral rights have vested in the State, not presently under mineral lease by the State as of May 14, 2014, situated in DeSoto Parish, Louisiana, the area of which is set forth as follows: The portion of Patent 12614 located in the SW/4 of SW/4 of Section 14, Township 14 North, Range 12 West, DeSoto Parish, Louisiana, being further described as Tract 1A on the Unit Survey Plat for the HA RA SUBB, prepared by John R. Bowman & Associates, Inc., revised June 3, 2013, situated outside the Bayou Pierre WMA, containing **37.027 acres**, all as more particularly outlined on a plat on file in the Office of Mineral Resources, Department of Natural Resources. All bearings, distances and coordinates are based on Louisiana Coordinate System of 1927, (North or South Zone), where applicable.

NOTE: The above description of the Tract nominated for lease has been provided and corrected, where required, exclusively by the nomination party. Any mineral lease selected from this Tract and awarded by the Louisiana State Mineral and Energy Board shall be without warranty of any kind, either express, implied, or statutory, including, but not limited to, the implied warranties of merchantability and fitness for a particular purpose. Should the mineral lease awarded by the Louisiana State Mineral and Energy Board be subsequently modified, cancelled or abrogated due to the existence of conflicting leases, operating agreements, private claims or other future obligations or conditions which may affect all or any portion of the leased Tract, it shall not relieve the Lessee of the obligation to pay any bonus due thereon to the Louisiana State Mineral and Energy Board, nor shall the Louisiana State Mineral and Energy Board be obligated to refund any consideration paid by the Lessor prior to such modification, cancellation, or abrogation, including, but not limited to, bonuses, rentals and royalties.

NOTE: NO PORTION BIDS WILL BE ACCEPTED.

NOTE: The lease shall be depth limited to all sands below the base of the Cotton Valley Formation, Reservoir A, in the Thorn Lake Field, initially defined in Office of Conservation Order No. 1145 effective July 31, 1981, and re-defined by the 1145-A Series of Orders.

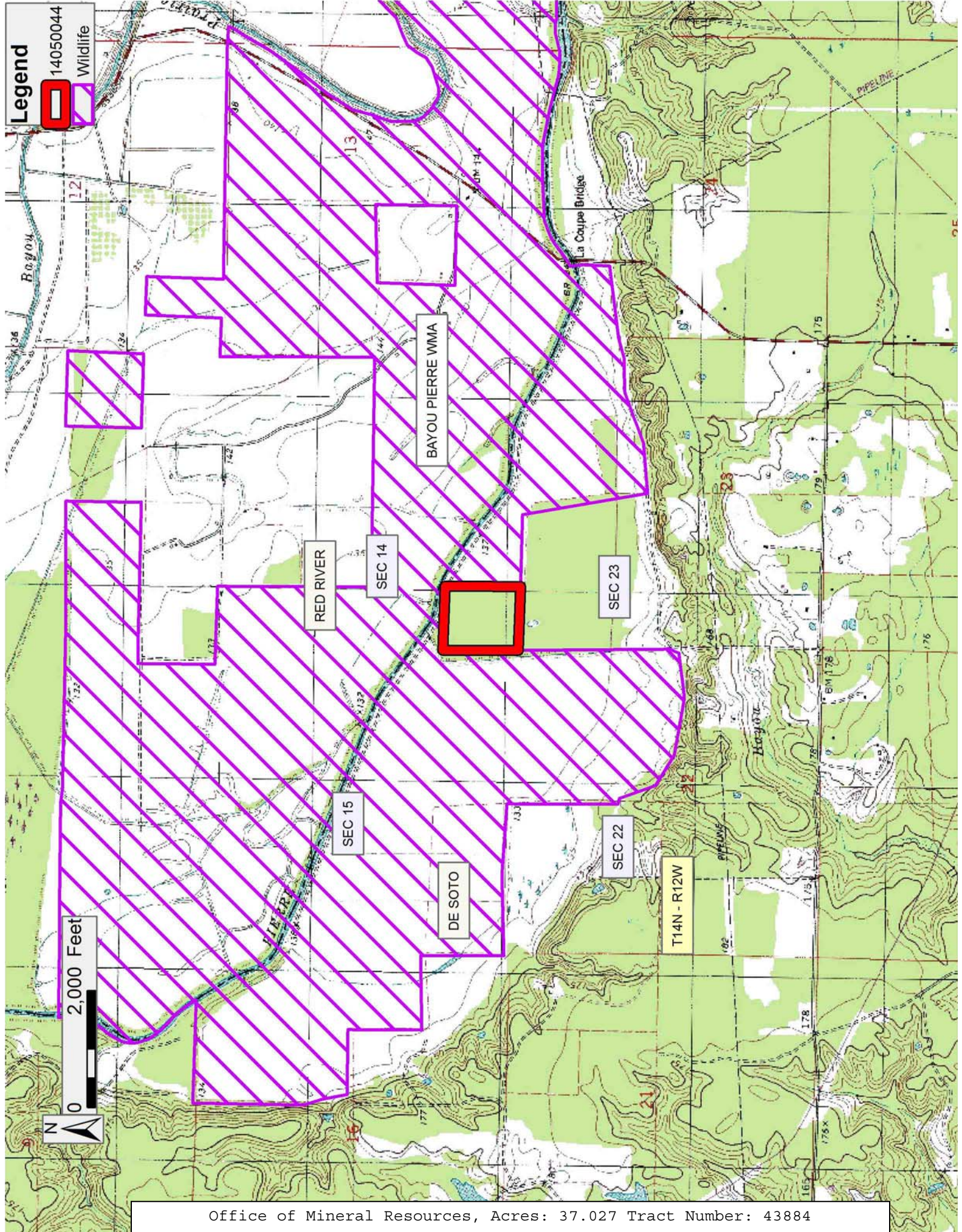
NOTE: The proposed tract participates in production from currently one unit well, the HA RA SUBB; Bethard Corp 14H No. 1 (SN 242569) that initially tested July 1, 2011, at a rate of 8,433 MCFD. Since the unit was completed in July, 2011, the HA RA SUBB unit cumulative production through December, 2013 is 5,643,965 MCF, according to the Louisiana Office of Conservation production records.

NOTE: The primary term of this lease on property which is subject to the aforesaid litigation shall be three years following a final, non-appealable judgment in the aforesaid litigation, until a mutually agreeable compromise among the litigating parties is effected, or a

period of ten years from the date this lease is awarded has elapsed, whichever comes first.

Applicant: STAFF OFFICE OF MINERAL RESOURCES

Bidder	Cash Payment	Price/Acre	Rental	Oil	Gas	Other



Legend

14050044
Wildlife

2,000 Feet

TRACT 43885 - De Soto Parish, Louisiana

The mineral rights only under land previously sold after 1921, but to which the mineral rights have vested in the State, not presently under mineral lease by the State as of May 14, 2014, situated in Desoto Parish, Louisiana, the area of which is set forth as follows: The portion of Patent 13132 in the N/2 of NW/4 of Section 24, Township 14 North, Range 12 West, situated outside the Bayou Pierre WMA and lying South of Bayou Pierre, DeSoto Parish, Louisiana, also identified as Tract 4 in the Chesapeake Operating, Inc. HA RD SUV, containing **22.821 acres**, all as more particularly outlined on a plat on file in the Office of Mineral Resources, Department of Natural Resources. All bearings, distances and coordinates are based on Louisiana Coordinate System of 1927, (North or South Zone), where applicable.

NOTE: The above description of the Tract nominated for lease has been provided and corrected, where required, exclusively by the nomination party. Any mineral lease selected from this Tract and awarded by the Louisiana State Mineral and Energy Board shall be without warranty of any kind, either express, implied, or statutory, including, but not limited to, the implied warranties of merchantability and fitness for a particular purpose. Should the mineral lease awarded by the Louisiana State Mineral and Energy Board be subsequently modified, cancelled or abrogated due to the existence of conflicting leases, operating agreements, private claims or other future obligations or conditions which may affect all or any portion of the leased Tract, it shall not relieve the Lessee of the obligation to pay any bonus due thereon to the Louisiana State Mineral and Energy Board, nor shall the Louisiana State Mineral and Energy Board be obligated to refund any consideration paid by the Lessor prior to such modification, cancellation, or abrogation, including, but not limited to, bonuses, rentals and royalties.

NOTE: NO PORTION BIDS WILL BE ACCEPTED.

NOTE: The proposed tract participates in production from currently one unit well, the HA RD SUV; Gamble 24-14-12H No. 1 (SN 239826) that initially tested February 17, 2010 at a rate of 11,832 MCFD. Since the unit was completed in 2010, the HA RD SUV unit cumulative production through December, 2013 is 5,498,149 MCF, according to the Louisiana Office of Conservation production records.

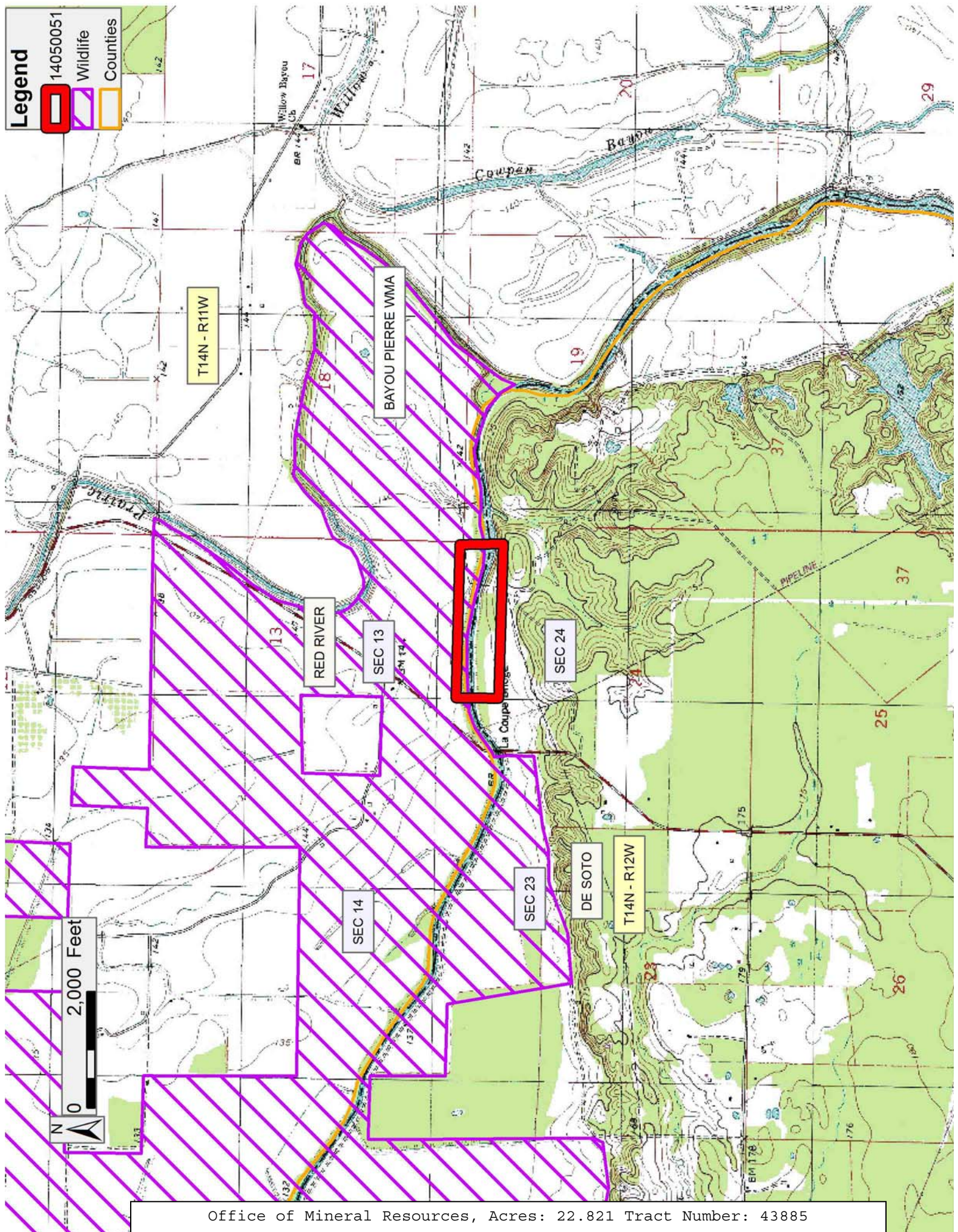
NOTE: The primary term of this lease on property which is subject to the aforesaid litigation shall be three years following a final, non-appealable judgment in the aforesaid litigation, until a mutually agreeable compromise among the litigating parties is effected, or a period of ten years from the date this lease is awarded has elapsed, whichever comes first.

Applicant: STAFF OFFICE OF MINERAL RESOURCES

Bidder	Cash Payment	Price/Acre	Rental	Oil	Gas	Other

Legend

- 14050051
- Wildlife
- Counties



TRACT 43886 - St. Helena Parish, Louisiana

All of the lands now or formerly constituting the beds and bottoms of all water bodies of every nature and description as to which title is vested in the State of Louisiana, together with all islands arising therein and other lands formed by accretion or by reliction, where allowed by law, excepting tax adjudicated lands, and not presently under mineral lease on May 14, 2014, situated in St. Helena Parish, Louisiana, and more particularly described as follows: Beginning at a point having Coordinates of X = 2,209,700.00 and Y = 834,150.00; thence West 7,550.00 feet to a point having Coordinates of X = 2,202,150.00 and Y = 834,150.00; thence North 16,100.00 feet to a point having Coordinates of X = 2,202,150.00 and Y = 850,250.00; thence East 7,550.00 feet to a point having Coordinates of X = 2,209,700.00 and Y = 850,250.00; thence South 16,100.00 feet to the Point of Beginning, **LESS AND EXCEPT** any portion of the described tract that may fall with the State of Mississippi, containing approximately **30 acres**, all as more particularly outlined on a plat on file in the Office of Mineral Resources, Department of Natural Resources. All bearings, distances and coordinates are based on Louisiana Coordinate System of 1927, (North or South Zone), where applicable.

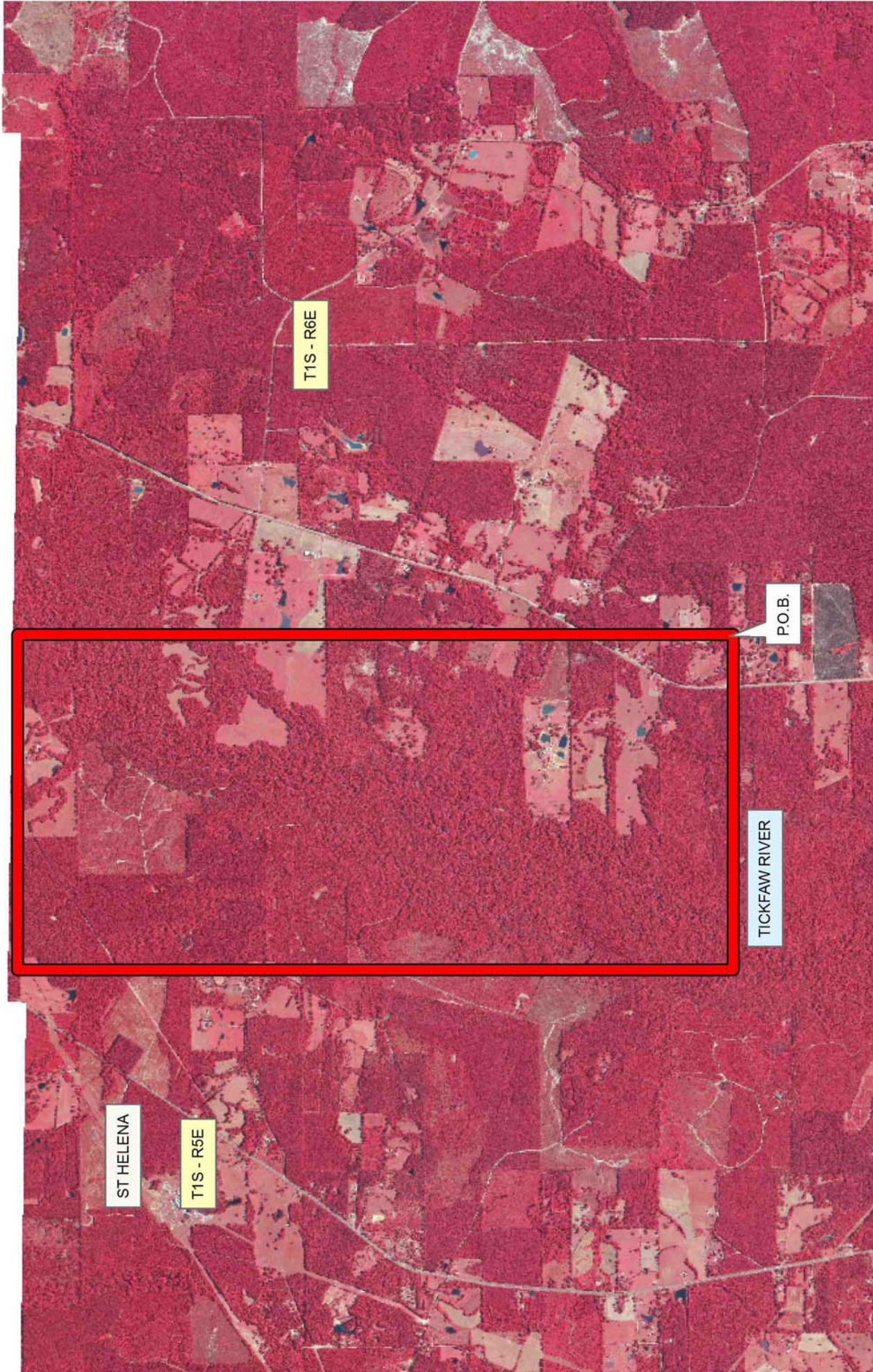
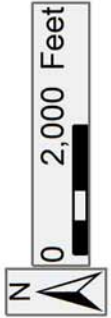
NOTE: The above description of the Tract nominated for lease has been provided and corrected, where required, exclusively by the nomination party. Any mineral lease selected from this Tract and awarded by the Louisiana State Mineral and Energy Board shall be without warranty of any kind, either express, implied, or statutory, including, but not limited to, the implied warranties of merchantability and fitness for a particular purpose. Should the mineral lease awarded by the Louisiana State Mineral and Energy Board be subsequently modified, cancelled or abrogated due to the existence of conflicting leases, operating agreements, private claims or other future obligations or conditions which may affect all or any portion of the leased Tract, it shall not relieve the Lessee of the obligation to pay any bonus due thereon to the Louisiana State Mineral and Energy Board, nor shall the Louisiana State Mineral and Energy Board be obligated to refund any consideration paid by the Lessor prior to such modification, cancellation, or abrogation, including, but not limited to, bonuses, rentals and royalties.

NOTE: A portion of this tract is located on or adjacent to a Louisiana designated Natural and Scenic River. The applicant must obtain authorization from the Louisiana Department of Wildlife and Fisheries, Scenic Rivers Program prior to initiating any activities within or adjacent to the river, including, but not limited to, crossings by roads and pipelines, well sites, production facilities and water withdrawals.

Applicant: PRECISION ENERGY

Bidder	Cash Payment	Price/Acre	Rental	Oil	Gas	Other

Legend
14050017



TRACT 43887 - East Feliciana Parish, Louisiana

All of the lands now or formerly constituting the beds and bottoms of all water bodies of every nature and description as to which title is vested in the State of Louisiana, together with all islands arising therein and other lands formed by accretion or by reliction, where allowed by law, excepting tax adjudicated lands, and not presently under mineral lease on May 14, 2014, situated in East Feliciana Parish, Louisiana, and more particularly described as follows: Beginning at a point having Coordinates of X = 2,136,650.00 and Y = 838,035.00; thence North 12,215.00 feet to a point having Coordinates of X = 2,136,650.00 and Y = 850,250.00; thence East 11,050.00 feet to a point having Coordinates of X = 2,147,700.00 and Y = 850,250.00; thence South 12,215.00 feet to a point on the North line of State Lease No. 20550 having Coordinates of X = 2,147,700.00 and Y = 838,035.00; thence West 4,585.00 feet along the North line of said State Lease No. 20550 to its Northwest corner having Coordinates of X = 2,143,115.00 and Y = 838,035.00; thence West 6,465.00 feet to the Point of Beginning, **LESS AND EXCEPT** any right, title, and interest in lands owned by and not under lease from the State of Louisiana, on behalf of the East Feliciana Parish School Board, situated in Section 16, Township 1 South, Range 3 East, East Feliciana Parish, Louisiana, contained within the above described tract, and **LESS AND EXCEPT** any portion of the described tract that may fall with the State of Mississippi, containing approximately **34 acres**, all as more particularly outlined on a plat on file in the Office of Mineral Resources, Department of Natural Resources. All bearings, distances and coordinates are based on Louisiana Coordinate System of 1927, (North or South Zone), where applicable.

NOTE: The above description of the Tract nominated for lease has been provided and corrected, where required, exclusively by the nomination party. Any mineral lease selected from this Tract and awarded by the Louisiana State Mineral and Energy Board shall be without warranty of any kind, either express, implied, or statutory, including, but not limited to, the implied warranties of merchantability and fitness for a particular purpose. Should the mineral lease awarded by the Louisiana State Mineral and Energy Board be subsequently modified, cancelled or abrogated due to the existence of conflicting leases, operating agreements, private claims or other future obligations or conditions which may affect all or any portion of the leased Tract, it shall not relieve the Lessee of the obligation to pay any bonus due thereon to the Louisiana State Mineral and Energy Board, nor shall the Louisiana State Mineral and Energy Board be obligated to refund any consideration paid by the Lessor prior to such modification, cancellation, or abrogation, including, but not limited to, bonuses, rentals and royalties.

Applicant: PRECISION ENERGY

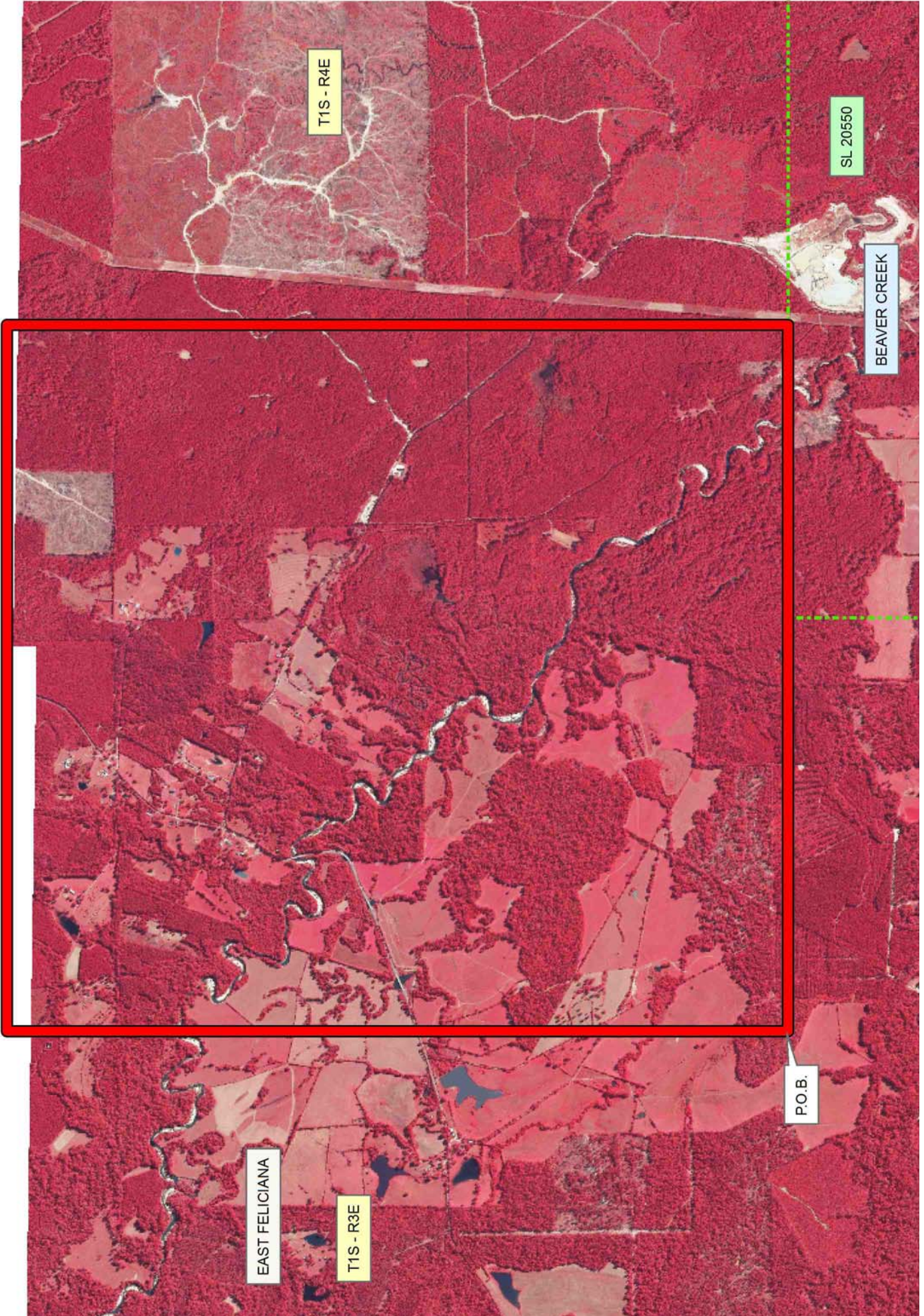
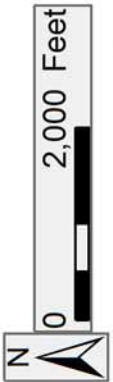
Bidder	Cash Payment	Price/Acre	Rental	Oil	Gas	Other

Legend

14050011



Active_Leases



TRACT 43888 - East Feliciana Parish, Louisiana

All of the lands now or formerly constituting the beds and bottoms of all water bodies of every nature and description as to which title is vested in the State of Louisiana, together with all islands arising therein and other lands formed by accretion or by reliction, where allowed by law, excepting tax adjudicated lands, and not presently under mineral lease on May 14, 2014, situated in East Feliciana Parish, Louisiana, and more particularly described as follows: Beginning at a point having Coordinates of X = 2,136,650.00 and Y = 838,035.00; thence West 11,050.00 feet to a point having Coordinates of X = 2,125,600.00 and Y = 838,035.00; thence North 12,215.00 feet to a point having Coordinates of X = 2,125,600.00 and Y = 850,250.00; thence East 11,050.00 feet to a point having Coordinates of X = 2,136,650.00 and Y = 850,250.00; thence South 12,215.00 feet to the Point of Beginning, **LESS AND EXCEPT** any right, title, and interest in lands owned by and not under lease from the State of Louisiana, on behalf of the East Feliciana Parish School Board, situated in Section 16, Township 1 South, Range 3 East, East Feliciana Parish, Louisiana, contained within the above described tract, and **LESS AND EXCEPT** any portion of the described tract that may fall with the State of Mississippi, containing approximately **11 acres**, all as more particularly outlined on a plat on file in the Office of Mineral Resources, Department of Natural Resources. All bearings, distances and coordinates are based on Louisiana Coordinate System of 1927, (North or South Zone), where applicable.

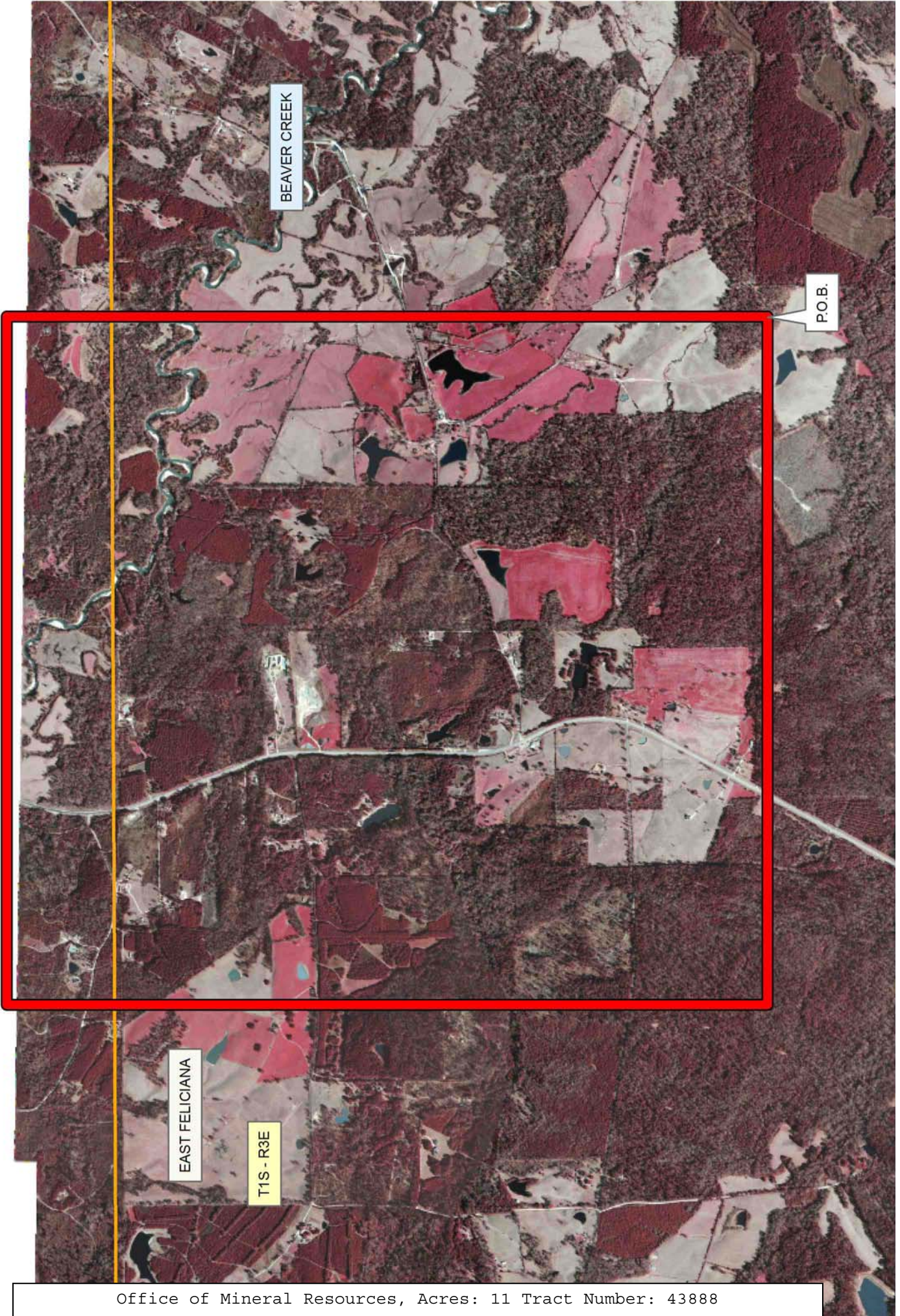
NOTE: The above description of the Tract nominated for lease has been provided and corrected, where required, exclusively by the nomination party. Any mineral lease selected from this Tract and awarded by the Louisiana State Mineral and Energy Board shall be without warranty of any kind, either express, implied, or statutory, including, but not limited to, the implied warranties of merchantability and fitness for a particular purpose. Should the mineral lease awarded by the Louisiana State Mineral and Energy Board be subsequently modified, cancelled or abrogated due to the existence of conflicting leases, operating agreements, private claims or other future obligations or conditions which may affect all or any portion of the leased Tract, it shall not relieve the Lessee of the obligation to pay any bonus due thereon to the Louisiana State Mineral and Energy Board, nor shall the Louisiana State Mineral and Energy Board be obligated to refund any consideration paid by the Lessor prior to such modification, cancellation, or abrogation, including, but not limited to, bonuses, rentals and royalties.

Applicant: PRECISION ENERGY

Bidder	Cash Payment	Price/Acre	Rental	Oil	Gas	Other

Legend

- 14050010
- Counties



TRACT 43889 - St. Helena Parish, Louisiana

All of the lands now or formerly constituting the beds and bottoms of all water bodies of every nature and description as to which title is vested in the State of Louisiana, together with all islands arising therein and other lands formed by accretion or by reliction, where allowed by law, excepting tax adjudicated lands, and not presently under mineral lease on May 14, 2014, situated in St. Helena Parish, Louisiana, and more particularly described as follows: Beginning at a point having Coordinates of X = 2,209,050.00 and Y = 834,150.00; thence South 14,300.00 feet to a point having Coordinates of X = 2,209,050.00 and Y = 819,850.00; thence West 7,550.00 feet to a point having Coordinates of X = 2,201,500.00 and Y = 819,850.00; thence North 14,300.00 feet to a point having Coordinates of X = 2,201,500.00 and Y = 834,150.00; thence East 7,550.00 feet to the Point of Beginning, containing approximately **27 acres**, all as more particularly outlined on a plat on file in the Office of Mineral Resources, Department of Natural Resources. All bearings, distances and coordinates are based on Louisiana Coordinate System of 1927, (North or South Zone), where applicable.

NOTE: The above description of the Tract nominated for lease has been provided and corrected, where required, exclusively by the nomination party. Any mineral lease selected from this Tract and awarded by the Louisiana State Mineral and Energy Board shall be without warranty of any kind, either express, implied, or statutory, including, but not limited to, the implied warranties of merchantability and fitness for a particular purpose. Should the mineral lease awarded by the Louisiana State Mineral and Energy Board be subsequently modified, cancelled or abrogated due to the existence of conflicting leases, operating agreements, private claims or other future obligations or conditions which may affect all or any portion of the leased Tract, it shall not relieve the Lessee of the obligation to pay any bonus due thereon to the Louisiana State Mineral and Energy Board, nor shall the Louisiana State Mineral and Energy Board be obligated to refund any consideration paid by the Lessor prior to such modification, cancellation, or abrogation, including, but not limited to, bonuses, rentals and royalties.

NOTE: A portion of this tract is located on or adjacent to a Louisiana designated Natural and Scenic River. The applicant must obtain authorization from the Louisiana Department of Wildlife and Fisheries, Scenic Rivers Program prior to initiating any activities within or adjacent to the river, including, but not limited to, crossings by roads and pipelines, well sites, production facilities and water withdrawals.

Applicant: PRECISION ENERGY

Bidder	Cash Payment	Price/Acre	Rental	Oil	Gas	Other

Legend

14050016



T1S - R6E

P.O.B.

ST HELENA

T1S - R5E

TICKFAW RIVER



TRACT 43890 - St. Helena Parish, Louisiana

All of the lands now or formerly constituting the beds and bottoms of all water bodies of every nature and description as to which title is vested in the State of Louisiana, together with all islands arising therein and other lands formed by accretion or by reliction, where allowed by law, excepting tax adjudicated lands, and not presently under mineral lease on May 14, 2014, situated in St. Helena Parish, Louisiana, and more particularly described as follows: Beginning at a point having Coordinates of X = 2,212,825.00 and Y = 819,850.00; thence South 16,450.00 feet to a point having Coordinates of X = 2,212,825.00 and Y = 803,400.00; thence West 7,550.00 feet to a point having Coordinates of X = 2,205,275.00 and Y = 803,400.00; thence North 16,450.00 feet to a point having Coordinates of X = 2,205,275.00 and Y = 819,850.00; thence East 7,550.00 feet to the Point of Beginning, containing approximately **28 acres**, all as more particularly outlined on a plat on file in the Office of Mineral Resources, Department of Natural Resources. All bearings, distances and coordinates are based on Louisiana Coordinate System of 1927, (North or South Zone), where applicable.

NOTE: The above description of the Tract nominated for lease has been provided and corrected, where required, exclusively by the nomination party. Any mineral lease selected from this Tract and awarded by the Louisiana State Mineral and Energy Board shall be without warranty of any kind, either express, implied, or statutory, including, but not limited to, the implied warranties of merchantability and fitness for a particular purpose. Should the mineral lease awarded by the Louisiana State Mineral and Energy Board be subsequently modified, cancelled or abrogated due to the existence of conflicting leases, operating agreements, private claims or other future obligations or conditions which may affect all or any portion of the leased Tract, it shall not relieve the Lessee of the obligation to pay any bonus due thereon to the Louisiana State Mineral and Energy Board, nor shall the Louisiana State Mineral and Energy Board be obligated to refund any consideration paid by the Lessor prior to such modification, cancellation, or abrogation, including, but not limited to, bonuses, rentals and royalties.

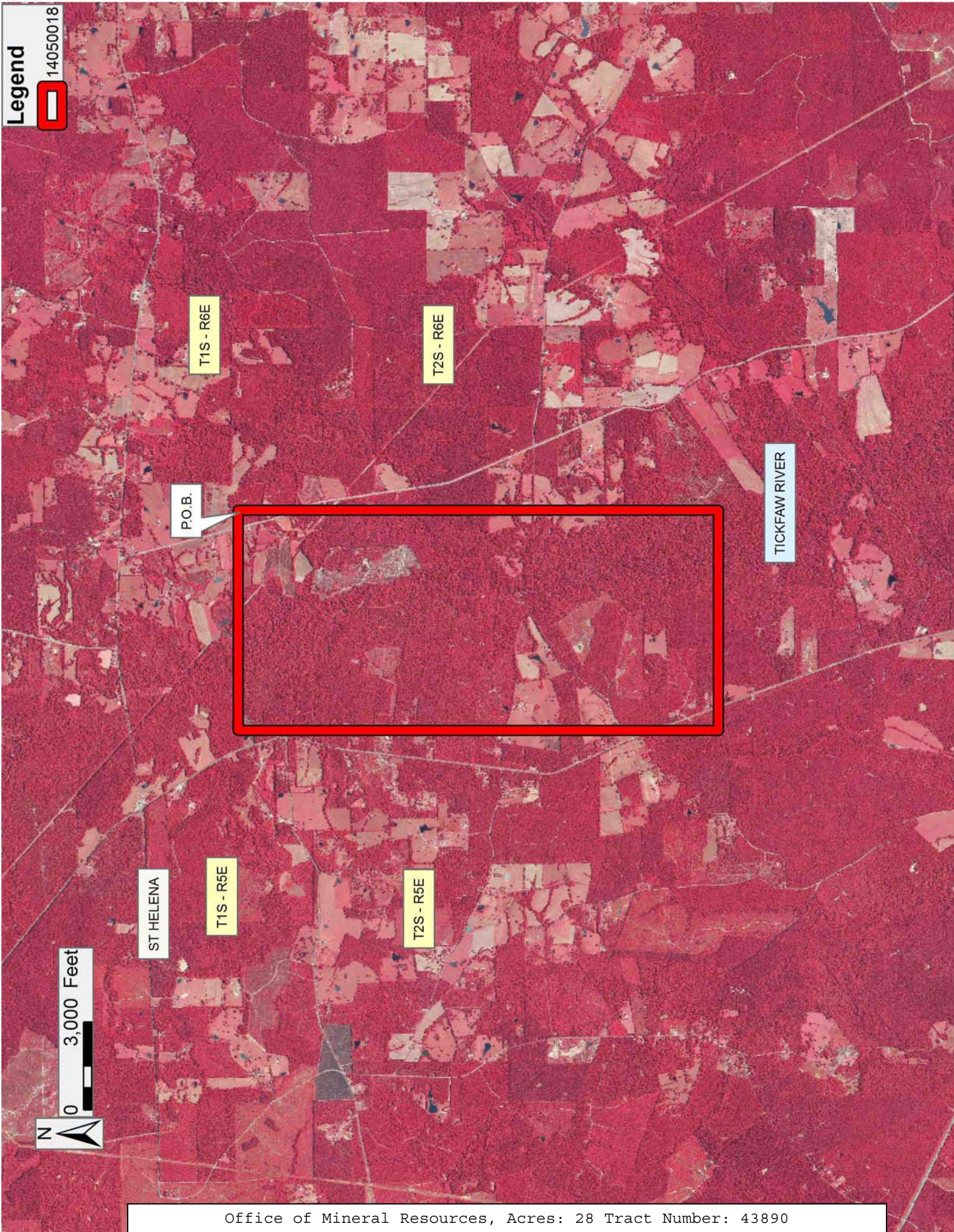
NOTE: A portion of this tract is located on or adjacent to a Louisiana designated Natural and Scenic River. The applicant must obtain authorization from the Louisiana Department of Wildlife and Fisheries, Scenic Rivers Program prior to initiating any activities within or adjacent to the river, including, but not limited to, crossings by roads and pipelines, well sites, production facilities and water withdrawals.

Applicant: PRECISION ENERGY

Bidder	Cash Payment	Price/Acre	Rental	Oil	Gas	Other

Legend

14050018



TRACT 43891 - East Feliciana and St. Helena Parishes, Louisiana

All of the lands now or formerly constituting the beds and bottoms of all water bodies of every nature and description as to which title is vested in the State of Louisiana, together with all islands arising therein and other lands formed by accretion or by reliction, where allowed by law, excepting tax adjudicated lands, and not presently under mineral lease on May 14, 2014, situated in East Feliciana and St. Helena Parishes, Louisiana, and more particularly described as follows: Beginning at a point having Coordinates of X = 2,154,250.00 and Y = 806,000.00; thence West 7,850.00 feet to a point having Coordinates of X = 2,146,400.00 and Y = 806,000.00; thence North 13,555.00 feet to a point on the South line of State Lease No. 20537 having Coordinates of X = 2,146,400.00 and Y = 819,555.00; thence East 7,850.00 feet along the South line of said State Lease No. 20537 to a point having Coordinates of X = 2,154,250.00 and Y = 819,555.00; thence South 13,555.00 feet to the Point of Beginning, containing approximately **82 acres**, all as more particularly outlined on a plat on file in the Office of Mineral Resources, Department of Natural Resources. All bearings, distances and coordinates are based on Louisiana Coordinate System of 1927, (North or South Zone), where applicable.

NOTE: The above description of the Tract nominated for lease has been provided and corrected, where required, exclusively by the nomination party. Any mineral lease selected from this Tract and awarded by the Louisiana State Mineral and Energy Board shall be without warranty of any kind, either express, implied, or statutory, including, but not limited to, the implied warranties of merchantability and fitness for a particular purpose. Should the mineral lease awarded by the Louisiana State Mineral and Energy Board be subsequently modified, cancelled or abrogated due to the existence of conflicting leases, operating agreements, private claims or other future obligations or conditions which may affect all or any portion of the leased Tract, it shall not relieve the Lessee of the obligation to pay any bonus due thereon to the Louisiana State Mineral and Energy Board, nor shall the Louisiana State Mineral and Energy Board be obligated to refund any consideration paid by the Lessor prior to such modification, cancellation, or abrogation, including, but not limited to, bonuses, rentals and royalties.

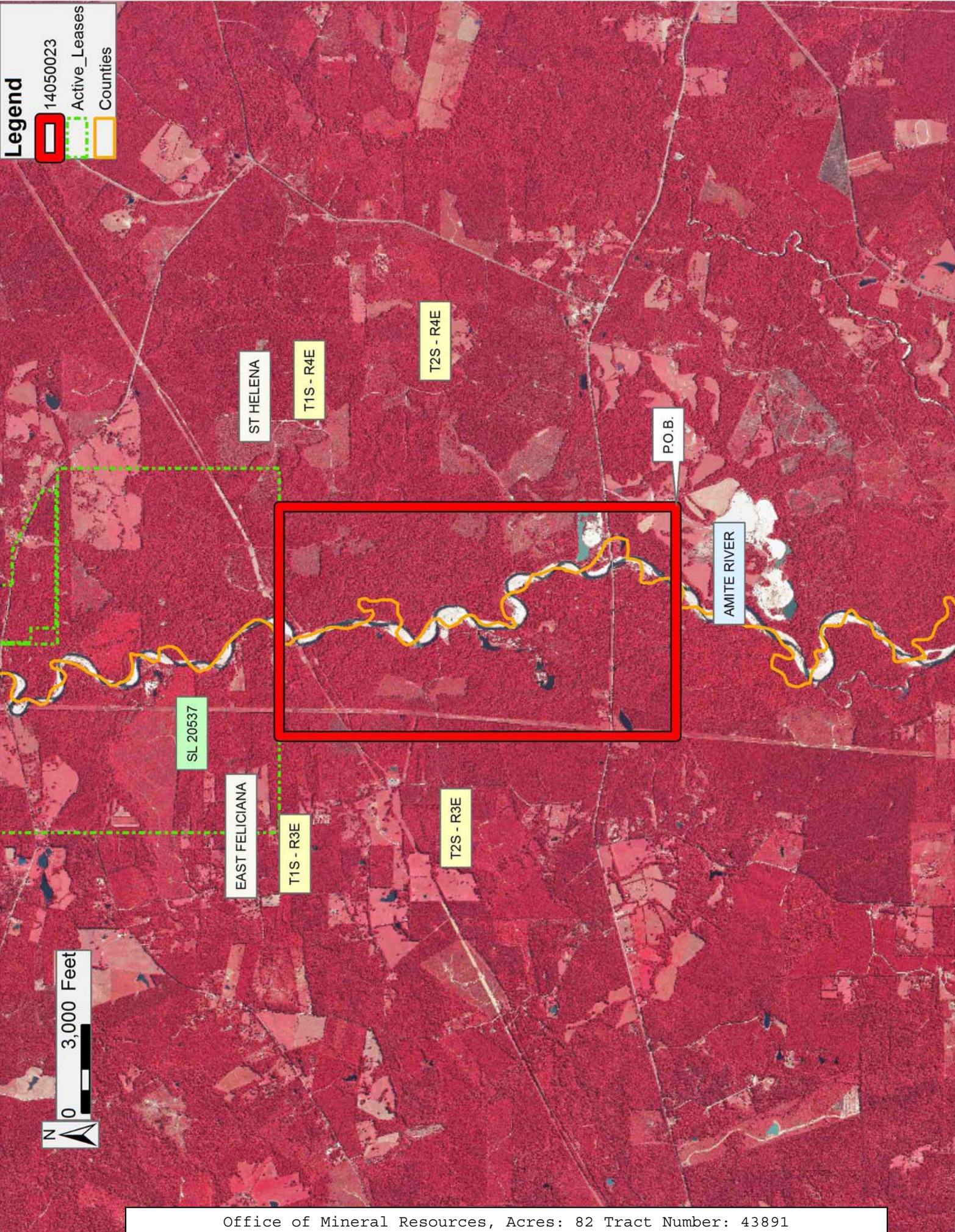
NOTE: A portion of this tract is located on or adjacent to a Louisiana designated Natural and Scenic River. The applicant must obtain authorization from the Louisiana Department of Wildlife and Fisheries, Scenic Rivers Program prior to initiating any activities within or adjacent to the river, including, but not limited to, crossings by roads and pipelines, well sites, production facilities and water withdrawals.

Applicant: PRECISION ENERGY

Bidder	Cash Payment	Price/Acre	Rental	Oil	Gas	Other

Legend

- 14050023
- Active_Leases
- Counties



TRACT 43892 - East Feliciana and St. Helena Parishes, Louisiana

All of the lands now or formerly constituting the beds and bottoms of all water bodies of every nature and description as to which title is vested in the State of Louisiana, together with all islands arising therein and other lands formed by accretion or by reliction, where allowed by law, excepting tax adjudicated lands, and not presently under mineral lease on May 14, 2014, situated in East Feliciana and St. Helena Parishes, Louisiana, and more particularly described as follows: Beginning at a point having Coordinates of X = 2,156,000.00 and Y = 806,000.00; thence South 14,400.00 feet to a point having Coordinates of X = 2,156,000.00 and Y = 791,600.00; thence West 9,600.00 feet to a point having Coordinates of X = 2,146,400.00 and Y = 791,600.00; thence North 14,400.00 feet to a point having Coordinates of X = 2,146,400.00 and Y = 806,000.00; thence East 9,600.00 feet to the Point of Beginning, containing approximately **134 acres**, all as more particularly outlined on a plat on file in the Office of Mineral Resources, Department of Natural Resources. All bearings, distances and coordinates are based on Louisiana Coordinate System of 1927, (North or South Zone), where applicable.

NOTE: The above description of the Tract nominated for lease has been provided and corrected, where required, exclusively by the nomination party. Any mineral lease selected from this Tract and awarded by the Louisiana State Mineral and Energy Board shall be without warranty of any kind, either express, implied, or statutory, including, but not limited to, the implied warranties of merchantability and fitness for a particular purpose. Should the mineral lease awarded by the Louisiana State Mineral and Energy Board be subsequently modified, cancelled or abrogated due to the existence of conflicting leases, operating agreements, private claims or other future obligations or conditions which may affect all or any portion of the leased Tract, it shall not relieve the Lessee of the obligation to pay any bonus due thereon to the Louisiana State Mineral and Energy Board, nor shall the Louisiana State Mineral and Energy Board be obligated to refund any consideration paid by the Lessor prior to such modification, cancellation, or abrogation, including, but not limited to, bonuses, rentals and royalties.

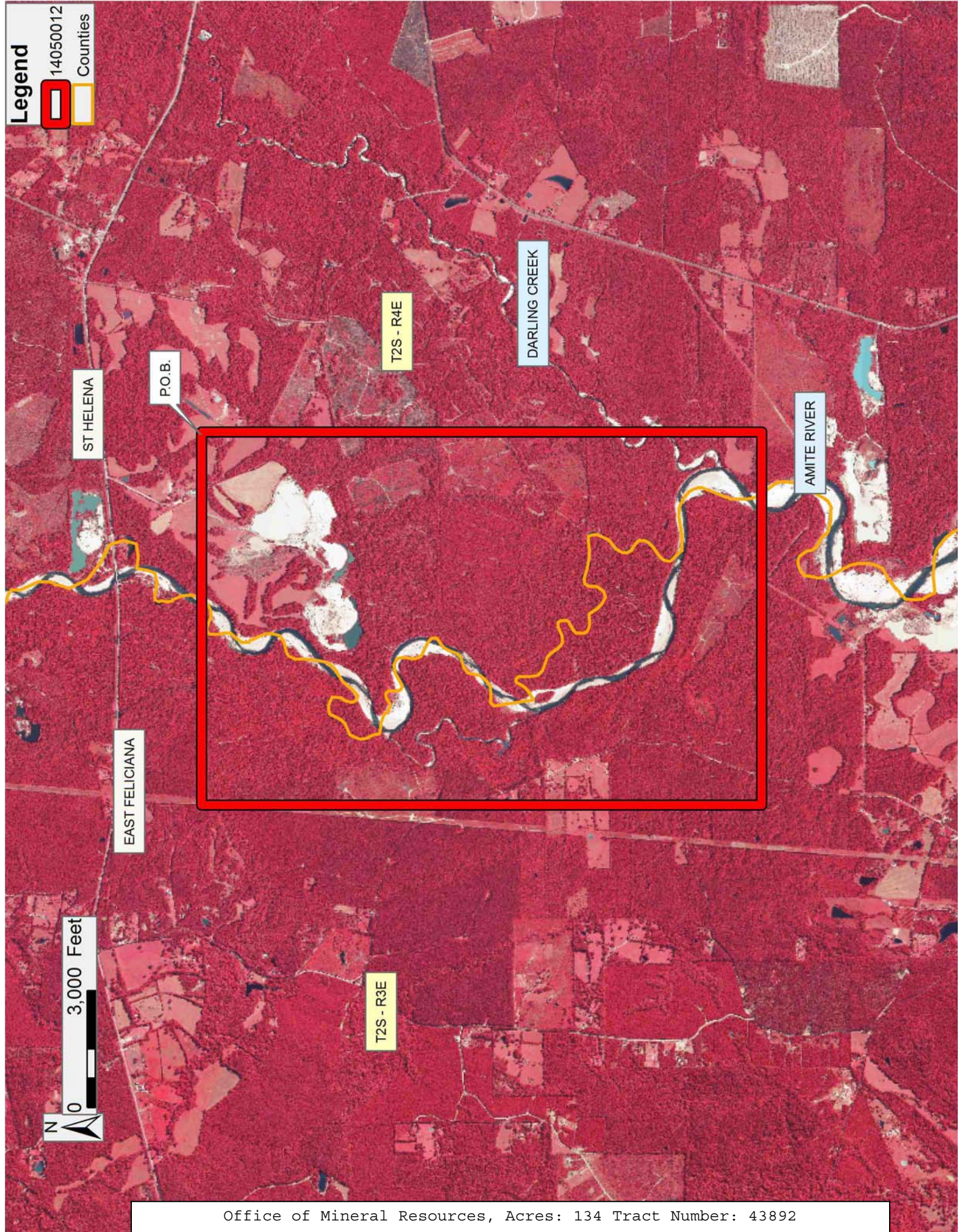
NOTE: A portion of this tract is located on or adjacent to a Louisiana designated Natural and Scenic River. The applicant must obtain authorization from the Louisiana Department of Wildlife and Fisheries, Scenic Rivers Program prior to initiating any activities within or adjacent to the river, including, but not limited to, crossings by roads and pipelines, well sites, production facilities and water withdrawals.

Applicant: PRECISION ENERGY

Bidder	Cash Payment	Price/Acre	Rental	Oil	Gas	Other

Legend
14050012
Counties

N
0
3,000 Feet



TRACT 43893 - St. Helena Parish, Louisiana

All of the lands now or formerly constituting the beds and bottoms of all water bodies of every nature and description as to which title is vested in the State of Louisiana, together with all islands arising therein and other lands formed by accretion or by reliction, where allowed by law, excepting tax adjudicated lands, and not presently under mineral lease on May 14, 2014, situated in St. Helena Parish, Louisiana, and more particularly described as follows: Beginning at a point having Coordinates of X = 2,156,000.00 and Y = 806,000.00; thence East 11,000.00 feet to a point having Coordinates of X = 2,167,000.00 and Y = 806,000.00; thence South 14,400.00 feet to a point having Coordinates of X = 2,167,000.00 and Y = 791,600.00; thence West 11,000.00 feet to a point having Coordinates of X = 2,156,000.00 and Y = 791,600.00; thence North 14,400.00 feet to the Point of Beginning, containing approximately **28 acres**, all as more particularly outlined on a plat on file in the Office of Mineral Resources, Department of Natural Resources. All bearings, distances and coordinates are based on Louisiana Coordinate System of 1927, (North or South Zone), where applicable.

NOTE: The above description of the Tract nominated for lease has been provided and corrected, where required, exclusively by the nomination party. Any mineral lease selected from this Tract and awarded by the Louisiana State Mineral and Energy Board shall be without warranty of any kind, either express, implied, or statutory, including, but not limited to, the implied warranties of merchantability and fitness for a particular purpose. Should the mineral lease awarded by the Louisiana State Mineral and Energy Board be subsequently modified, cancelled or abrogated due to the existence of conflicting leases, operating agreements, private claims or other future obligations or conditions which may affect all or any portion of the leased Tract, it shall not relieve the Lessee of the obligation to pay any bonus due thereon to the Louisiana State Mineral and Energy Board, nor shall the Louisiana State Mineral and Energy Board be obligated to refund any consideration paid by the Lessor prior to such modification, cancellation, or abrogation, including, but not limited to, bonuses, rentals and royalties.

Applicant: PRECISION ENERGY

Bidder	Cash Payment	Price/Acre	Rental	Oil	Gas	Other

Legend

14050021



DARLING CREEK

T2S - R4E

ST HELENA

P.O.B.

