

**TRACT 43904 - Plaquemines Parish, Louisiana**

All of the lands now or formerly constituting the beds and bottoms of all water bodies of every nature and description as to which title is vested in the State of Louisiana, together with all islands arising therein and other lands formed by accretion or by reliction, where allowed by law, excepting tax adjudicated lands, and not presently under mineral lease on May 14, 2014, situated in Plaquemines Parish, Louisiana, and more particularly described as follows: Beginning at a point having Coordinates of X = 2,451,166.22 and Y = 282,900.00; thence South 9,423.00 feet to a point having Coordinates of X = 2,451,166.22 and Y = 273,477.00; thence West 5,854.14 feet to a point on the Eastern boundary of State Lease No. 3035, as amended, having Coordinates of X = 2,445,312.08 and Y = 273,477.00; thence along the boundary of State Lease No. 3035, as amended, the following courses: North 30 degrees 27 minutes 46 seconds East 281.92 feet to a point having Coordinates of X = 2,445,455.00 and Y = 273,720.00; North 20 degrees 28 minutes 03 seconds East 757.84 feet to a point having Coordinates of X = 2,445,720.00 and Y = 274,430.00; North 14 degrees 25 minutes 15 seconds East 361.39 feet to a point having Coordinates of X = 2,445,810.00 and Y = 274,780.00; North 08 degrees 30 minutes 17 seconds East 540.95 feet to a point having Coordinates of X = 2,445,890.00 and Y = 275,315.00; North 00 degrees 52 minutes 53 seconds East 325.04 feet to a point having Coordinates of X = 2,445,895.00 and Y = 275,640.00; North 11 degrees 01 minutes 46 seconds West 601.10 feet to a point having Coordinates of X = 2,445,780.00 and Y = 276,230.00; North 23 degrees 22 minutes 27 seconds West 642.75 feet to a point having Coordinates of X = 2,445,525.00 and Y = 276,820.00; North 29 degrees 58 minutes 54 seconds West 450.25 feet to a point having Coordinates of X = 2,445,300.00 and Y = 277,210.00; North 36 degrees 28 minutes 09 seconds West 429.01 feet to a point having Coordinates of X = 2,445,045.00 and Y = 277,555.00; North 46 degrees 50 minutes 51 seconds West 328.98 feet to a point having Coordinates of X = 2,444,805.00 and Y = 277,780.00; South 42 degrees 21 minutes 27 seconds West 690.16 feet to a point having Coordinates of X = 2,444,340.00 and Y = 277,270.00; North 44 degrees 39 minutes 25 seconds West 590.44 feet to a point having Coordinates of X = 2,443,925.00 and Y = 277,690.00; North 53 degrees 26 minutes 25 seconds West 554.01 feet to a point having Coordinates of X = 2,443,480.00 and Y = 278,020.00; North 63 degrees 26 minutes 06 seconds West 245.97 feet to a point having Coordinates of X = 2,443,260.00 and Y = 278,130.00; North 73 degrees 04 minutes 21 seconds West 480.82 feet to a point having Coordinates of X = 2,442,800.01 and Y = 278,270.00; North 57 degrees 15 minutes 58 seconds West 166.45 feet to a point having Coordinates of X = 2,442,660.00 and Y = 278,360.00, and North 60 degrees 13 minutes 28 seconds West 845.39 feet to a point having Coordinates of X = 2,441,926.22 and Y = 278,779.83; thence North 4,120.18 feet to a point having Coordinates of X = 2,441,926.22 and Y = 282,900.00; thence East 9,240.00 feet to the Point of Beginning, containing **1,619.23 acres**, all as more particularly outlined on a plat on file in the Office of Mineral Resources, Department of Natural Resources. All bearings, distances and coordinates are based on Louisiana Coordinate System of 1927, (North or South Zone), where applicable.

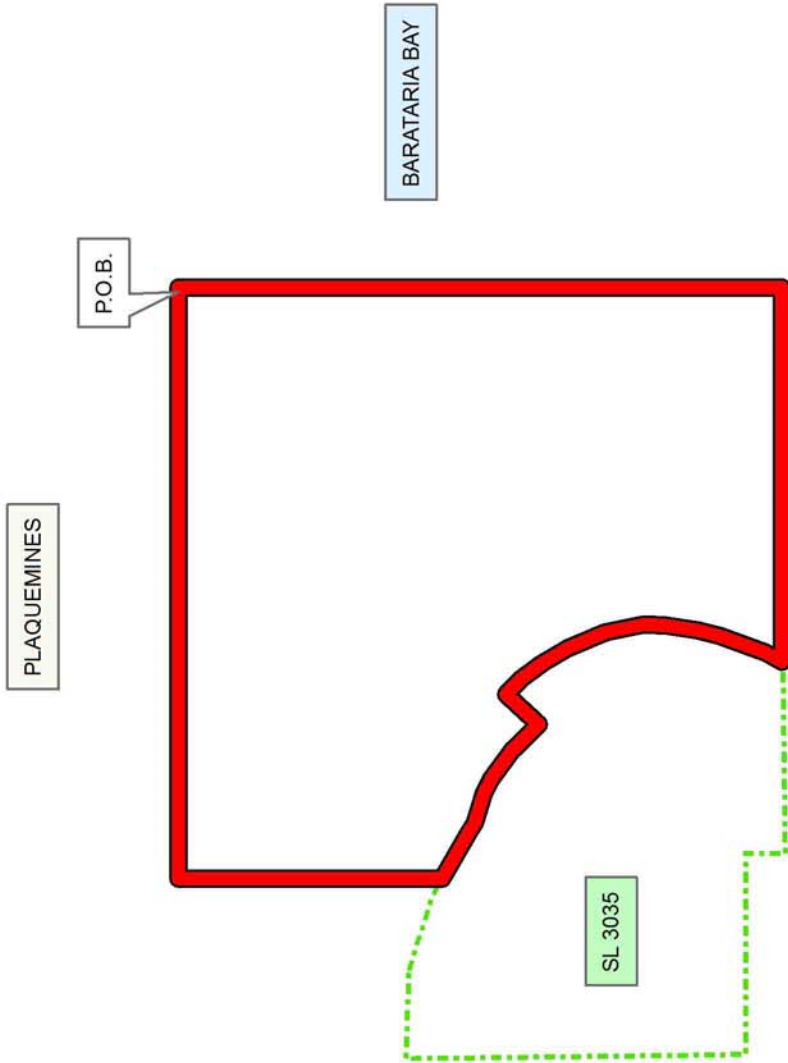
NOTE: The above description of the Tract nominated for lease has been provided and corrected, where required, exclusively by the nomination party. Any mineral lease selected from this Tract and awarded by the Louisiana State Mineral and Energy Board shall be without warranty of any kind, either express, implied, or statutory, including, but not limited to, the implied warranties of merchantability and fitness for a particular purpose. Should the mineral lease awarded by the Louisiana State Mineral and Energy Board be subsequently modified, cancelled or abrogated due to the existence of conflicting leases, operating agreements, private claims or other future obligations or conditions which may affect all or any portion of the leased Tract, it shall not relieve the Lessee of the obligation to pay any bonus due thereon to the Louisiana State Mineral and Energy Board, nor shall the Louisiana State Mineral and Energy Board be obligated to refund any consideration paid by the Lessor prior to such modification, cancellation, or abrogation, including, but not limited to, bonuses, rentals and royalties.

NOTE: The State of Louisiana does hereby reserve, and this lease shall be subject to, the imprescriptible right of surface use in the nature of a servitude in favor of the Department of Natural Resources, including its Offices and Commissions, for the sole purpose of implementing, constructing, servicing and maintaining approved coastal zone management and/or restoration projects. Utilization of any and all rights derived under this lease by the mineral lessee, its agents, successors or assigns, shall not interfere with nor hinder the reasonable surface use by the Department of Natural Resources, its Offices or Commissions, as herein above reserved.

Applicant: CYPRESS ENERGY CORPORATION

Bidder	Cash Payment	Price/Acre	Rental	Oil	Gas	Other

**Legend**  
14050006  
Active\_Leases



**TRACT 43905 - Plaquemines Parish, Louisiana**

All of the lands now or formerly constituting the beds and bottoms of all water bodies of every nature and description as to which title is vested in the State of Louisiana, together with all islands arising therein and other lands formed by accretion or by reliction, where allowed by law, excepting tax adjudicated lands, and not presently under mineral lease on May 14, 2014, situated in Plaquemines Parish, Louisiana, and more particularly described as follows: Beginning at a point having Coordinates of X = 2,451,166.22 and Y = 282,900.00; thence East 9,240.00 feet to a point having Coordinates of X = 2,460,406.22 and Y = 282,900.00; thence South 9,423.00 feet to a point on the Northern boundary of State Lease no. 21082 having Coordinates of X = 2,460,406.22 and Y = 273,477.00; thence West 422.22 feet along the Northern boundary of said State Lease No. 21082 to its Northwest corner having Coordinates of X = 2,459,984.00 and Y = 273,477.00; thence West 8,817.78 feet to a point having Coordinates of X = 2,451,166.22 and Y = 273,477.00; thence North 9,423.00 feet to the Point of Beginning, containing approximately **1,990 acres**, all as more particularly outlined on a plat on file in the Office of Mineral Resources, Department of Natural Resources. All bearings, distances and coordinates are based on Louisiana Coordinate System of 1927, (North or South Zone), where applicable.

NOTE: The above description of the Tract nominated for lease has been provided and corrected, where required, exclusively by the nomination party. Any mineral lease selected from this Tract and awarded by the Louisiana State Mineral and Energy Board shall be without warranty of any kind, either express, implied, or statutory, including, but not limited to, the implied warranties of merchantability and fitness for a particular purpose. Should the mineral lease awarded by the Louisiana State Mineral and Energy Board be subsequently modified, cancelled or abrogated due to the existence of conflicting leases, operating agreements, private claims or other future obligations or conditions which may affect all or any portion of the leased Tract, it shall not relieve the Lessee of the obligation to pay any bonus due thereon to the Louisiana State Mineral and Energy Board, nor shall the Louisiana State Mineral and Energy Board be obligated to refund any consideration paid by the Lessor prior to such modification, cancellation, or abrogation, including, but not limited to, bonuses, rentals and royalties.

NOTE: The State of Louisiana does hereby reserve, and this lease shall be subject to, the imprescriptible right of surface use in the nature of a servitude in favor of the Department of Natural Resources, including its Offices and Commissions, for the sole purpose of implementing, constructing, servicing and maintaining approved coastal zone management and/or restoration projects. Utilization of any and all rights derived under this lease by the mineral lessee, its agents, successors or assigns, shall not interfere with nor hinder the reasonable surface use by the Department of Natural Resources, its Offices or Commissions, as herein above reserved.

Applicant: CYPRESS ENERGY CORPORATION

Bidder	Cash Payment	Price/Acre	Rental	Oil	Gas	Other

**Legend**

14050007

Active\_Leases



3,000 Feet

0

PLAQUEMINES

BAY JIMMY

P.O.B.

SL 21082

BARATARIA BAY

**TRACT 43906 - Jefferson and Plaquemines Parishes, Louisiana**

All of the lands now or formerly constituting the beds and bottoms of all water bodies of every nature and description as to which title is vested in the State of Louisiana, together with all islands arising therein and other lands formed by accretion or by reliction, where allowed by law, excepting tax adjudicated lands, and not presently under mineral lease on May 14, 2014, situated in Jefferson and Plaquemines Parishes, Louisiana, and more particularly described as follows: Beginning at a point having Coordinates of X = 2,442,315.00 and Y = 264,237.00; thence West 9,695.00 feet to a point having Coordinates of X = 2,432,620.00 and Y = 264,237.00; thence North 4,333.00 feet to a point on the South line of State Lease No. 15744 having Coordinates of X = 2,432,620.00 and Y = 268,570.00; thence along the boundary of said State Lease No. 15744 the following courses: East 2,512.02 feet to a point having Coordinates of X = 2,435,132.02 and Y = 268,570.00 and North 3,234.63 feet to the Southeast corner of State Lease No. 15631 having Coordinates of X = 2,435,132.02 and Y = 271,804.63; thence North 3,034.77 feet along the East line of said State Lease No. 15631 to the Southwest corner of State Lease No. 14534 having Coordinates of X = 2,435,132.02 and Y = 274,839.40; thence East 3,027.18 feet along the South line of said State Lease No. 14534 to a point on the West line of State Lease No. 14374 having Coordinates of X = 2,438,159.20 and Y = 274,839.40; thence along the boundary of said State Lease No. 14374 the following courses: South 00 degrees 38 minutes 43 seconds East 926.14 feet to a point having Coordinates of X = 2,438,169.63 and Y = 273,913.32; South 87 degrees 51 minutes 11 seconds East 1,007.65 feet to a point having Coordinates of X = 2,439,176.57 and Y = 273,875.57, and North 00 degrees 41 minutes 45 seconds West 168.83 to the Southwest corner of State Lease No. 3035, as amended, having Coordinates of X = 2,439,174.52 and Y = 274,044.39; thence along the boundary of said State Lease No. 3035, as amended, the following courses: East 3,140.48 feet to a point having Coordinates of X = 2,442,315.00 and Y = 274,044.39 and South 620.74 feet to a point having Coordinates of X = 2,442,315.00 and Y = 273,423.65; thence South 9,186.65 feet to point of beginning, containing **1,918.97 acres**, all as more particularly outlined on a plat on file in the Office of Mineral Resources, Department of Natural Resources. All bearings, distances and coordinates are based on Louisiana Coordinate System of 1927, (North or South Zone), where applicable.

NOTE: The above description of the Tract nominated for lease has been provided and corrected, where required, exclusively by the nomination party. Any mineral lease selected from this Tract and awarded by the Louisiana State Mineral and Energy Board shall be without warranty of any kind, either express, implied, or statutory, including, but not limited to, the implied warranties of merchantability and fitness for a particular purpose. Should the mineral lease awarded by the Louisiana State Mineral and Energy Board be subsequently modified, cancelled or abrogated due to the existence of conflicting leases, operating agreements, private claims or other future obligations or conditions which may affect all or any portion of the leased Tract, it shall not relieve the Lessee of the

obligation to pay any bonus due thereon to the Louisiana State Mineral and Energy Board, nor shall the Louisiana State Mineral and Energy Board be obligated to refund any consideration paid by the Lessor prior to such modification, cancellation, or abrogation, including, but not limited to, bonuses, rentals and royalties.

NOTE: The State of Louisiana does hereby reserve, and this lease shall be subject to, the imprescriptible right of surface use in the nature of a servitude in favor of the Department of Natural Resources, including its Offices and Commissions, for the sole purpose of implementing, constructing, servicing and maintaining approved coastal zone management and/or restoration projects. Utilization of any and all rights derived under this lease by the mineral lessee, its agents, successors or assigns, shall not interfere with nor hinder the reasonable surface use by the Department of Natural Resources, its Offices or Commissions, as herein above reserved.

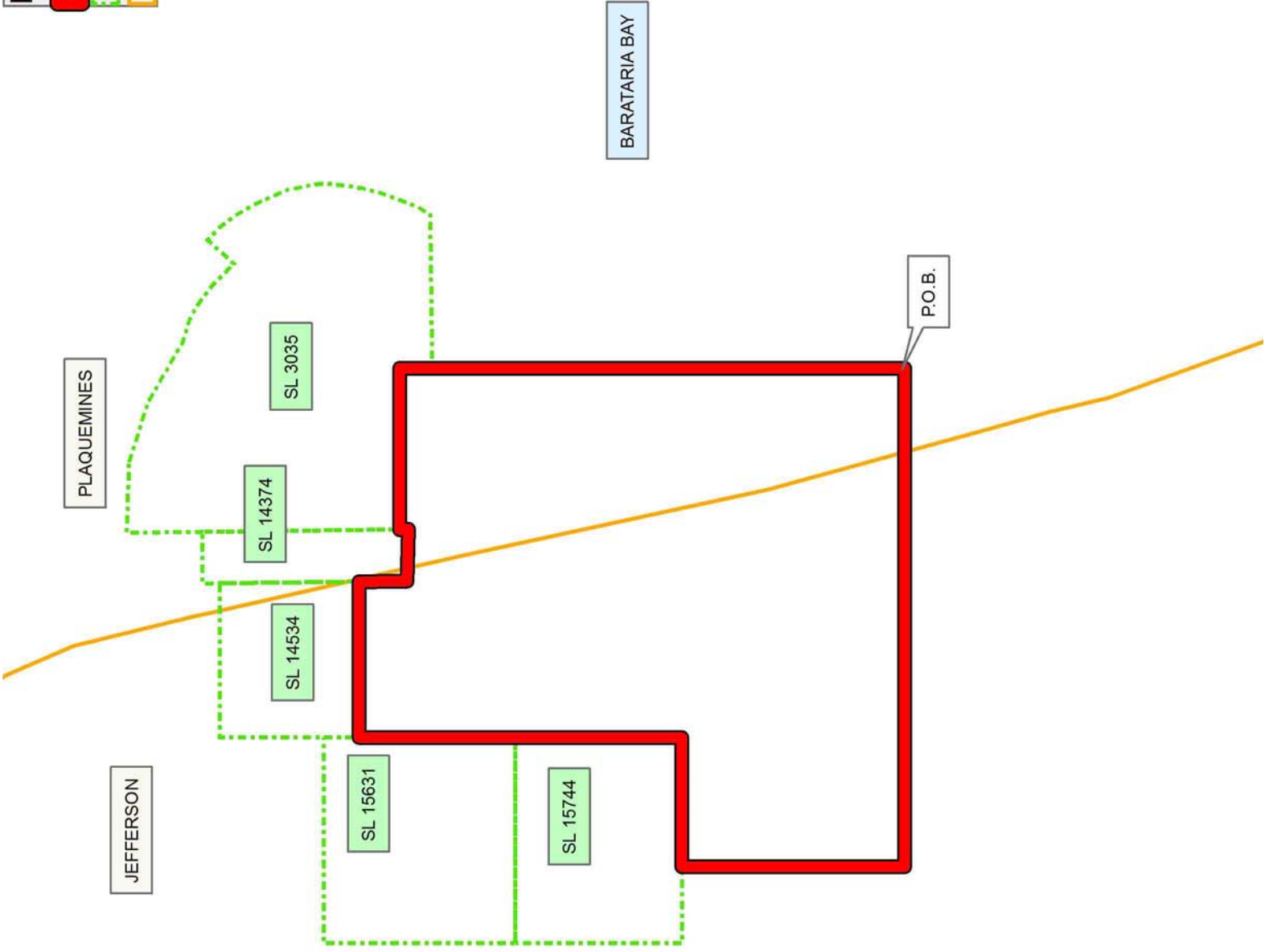
Applicant: CYPRESS ENERGY CORPORATION

Bidder	Cash Payment	Price/Acre	Rental	Oil	Gas	Other



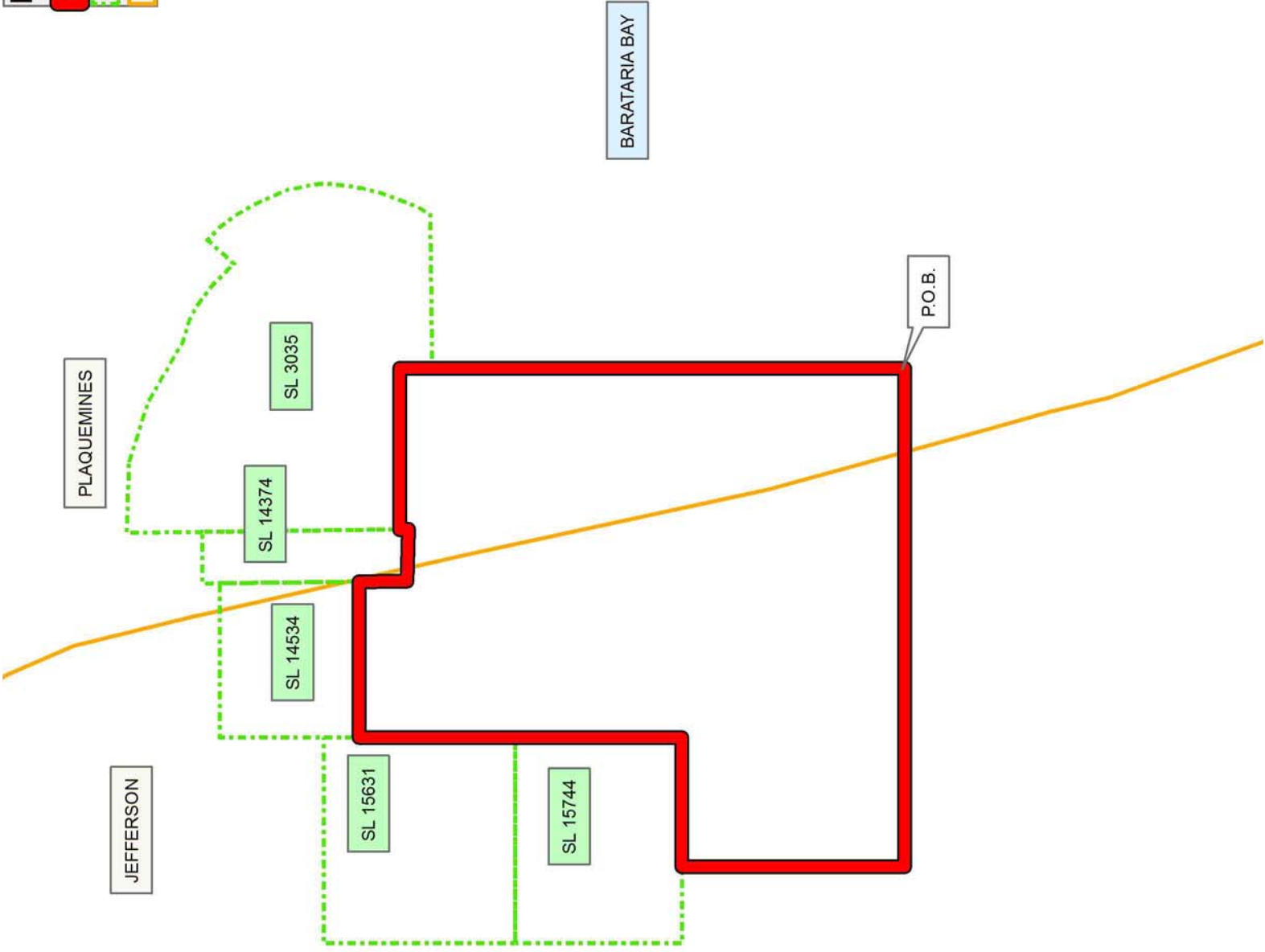
**Legend**

- 14050009
- Active\_Leases
- Counties



**Legend**

- 14050009
- Active\_Leases
- Counties



**TRACT 43907 - Plaquemines Parish, Louisiana**

All of the lands now or formerly constituting the beds and bottoms of all water bodies of every nature and description as to which title is vested in the State of Louisiana, together with all islands arising therein and other lands formed by accretion or by reliction, where allowed by law, excepting tax adjudicated lands, and not presently under mineral lease on May 14, 2014, situated in Plaquemines Parish, Louisiana, and more particularly described as follows: Beginning at a point having Coordinates of X = 2,442,315.00 and Y = 264,237.00; thence North 9,186.65 feet to a point on the Southern boundary of State Lease No. 3035, as amended, having Coordinates of X = 2,442,315.00 and Y = 273,423.65; thence along the boundary of said State Lease No. 3035, as amended, the following courses: North 89 degrees 18 minutes 07 seconds East 2,987.32 feet to a point having Coordinates of X = 2,445,302.10 and Y = 273,460.04 and North 30 degrees 27 minutes 46 seconds East 19.68 feet to a point having Coordinates of X = 2,445,312.08 and Y = 273,477.00; thence East 5,376.73 feet to a point having Coordinates of X = 2,450,688.81 and Y = 273,477.00; thence South 1,214.10 feet to a point having Coordinates of X = 2,450,688.81 and Y = 272,262.90; thence South 81 degrees 50 minutes 35 seconds West 1,965.69 feet to a point having Coordinates of X = 2,448,743.00 and Y = 271,984.00; South 00 degrees 32 minutes 28 seconds East 847.04 feet to a point having Coordinates of X = 2,448,751.00 and Y = 271,137.00, and North 89 degrees 40 minutes 43 seconds East 1,937.84 feet to its Southeast corner having Coordinates of X = 2,450,688.81 and Y = 271,147.87; thence South 6,910.87 feet to a point having Coordinates of X = 2,450,688.81 and Y = 264,237.00; thence West 8,373.81 feet to the point of beginning, containing **1,730.10 acres**, all as more particularly outlined on a plat on file in the Office of Mineral Resources, Department of Natural Resources. All bearings, distances and coordinates are based on Louisiana Coordinate System of 1927, (North or South Zone), where applicable.

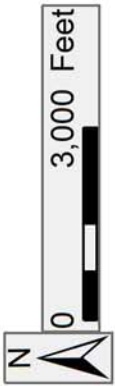
NOTE: The above description of the Tract nominated for lease has been provided and corrected, where required, exclusively by the nomination party. Any mineral lease selected from this Tract and awarded by the Louisiana State Mineral and Energy Board shall be without warranty of any kind, either express, implied, or statutory, including, but not limited to, the implied warranties of merchantability and fitness for a particular purpose. Should the mineral lease awarded by the Louisiana State Mineral and Energy Board be subsequently modified, cancelled or abrogated due to the existence of conflicting leases, operating agreements, private claims or other future obligations or conditions which may affect all or any portion of the leased Tract, it shall not relieve the Lessee of the obligation to pay any bonus due thereon to the Louisiana State Mineral and Energy Board, nor shall the Louisiana State Mineral and Energy Board be obligated to refund any consideration paid by the Lessor prior to such modification, cancellation, or abrogation, including, but not limited to, bonuses, rentals and royalties.

NOTE: The State of Louisiana does hereby reserve, and this lease shall be subject to, the imprescriptible right of surface use in the nature of a servitude in favor of the Department of Natural Resources, including its Offices and Commissions, for the sole purpose of implementing, constructing, servicing and maintaining approved coastal zone management and/or restoration projects. Utilization of any and all rights derived under this lease by the mineral lessee, its agents, successors or assigns, shall not interfere with nor hinder the reasonable surface use by the Department of Natural Resources, its Offices or Commissions, as herein above reserved.

Applicant: CYPRESS ENERGY CORPORATION

Bidder	Cash Payment	Price/Acre	Rental	Oil	Gas	Other

**Legend**  
14050008  
Active\_Leases



PLAQUEMINES

SL 3035

BARATARIA BAY

P.O.B.

**TRACT 43908 - Terrebonne Parish, Louisiana**

All of the lands now or formerly constituting the beds and bottoms of all water bodies of every nature and description as to which title is vested in the State of Louisiana, together with all islands arising therein and other lands formed by accretion or by reliction, where allowed by law, excepting tax adjudicated lands, and not presently under mineral lease on May 14, 2014, situated in Terrebonne Parish, Louisiana, and more particularly described as follows: Beginning at the Southernmost Southwest corner of State Lease No. 724, as amended, having Coordinates of X = 2,165,536.31 and Y = 193,716.36; thence South 89 degrees 43 minutes 25 seconds West 10,374.00 feet to a point having Coordinates of X = 2,155,162.43 and Y = 193,666.32; thence North 00 degrees 15 minutes 34 seconds West 13,180.82 feet to the Southeast corner of State Lease No. 21162 having Coordinates having Coordinates of X = 2,155,102.77 and Y = 206,847.00; thence along the boundaries of said State Lease No. 21162 the following courses: North 00 degrees 15 minutes 34 seconds West 1,821.23 feet to a point having Coordinates of X = 2,155,094.53 and Y = 208,668.21 and East 308.47 feet to a point having its East boundary having Coordinates of X = 2,155,403.00 and Y = 208,668.21; thence continue East 4,971.53 feet to a point having Coordinates of X = 2,160,374.53 and Y = 208,668.21, said point being the Southernmost Northwest corner of said State Lease No. 724, as amended; thence South 00 degrees 16 minutes 35 seconds East 4,720.28 feet along the Western boundary of said State Lease No. 724, as amended, to the Northwest corner of State Lease No. 21157 having Coordinates of X = 2,160,397.30 and Y = 203,947.98; thence along the boundaries of said State Lease No. 21157 the following courses: South 00 degrees 16 minutes 35 seconds East 1,514.54 feet to a point having Coordinates of X = 2,160,404.61 and Y = 202,433.66 and Southwesterly on an arc having a radius of 13,200.00 feet and a center at X = 2,152,463.32 and Y = 191,889.66 to a point having Coordinates of X = 2,161,506.49 and Y = 201,505.33, also being the Northern tip of State Lease No. 21152; thence along the boundaries of said State Lease No. 21152 the following courses: South 00 degrees 56 minutes 31 seconds East 3,378.43 feet to a point having Coordinates of X = 2,161,562.03 and Y = 198,127.36 and North 89 degrees 08 minutes 42 seconds East 2,514.56 feet to its Southeast corner and a point on the West boundary of said State Lease No. 724 having Coordinates of X = 2,164,074.06 and Y = 198,169.06; thence Southwesterly on an arc having a radius of 13,200.00 feet and a center at X = 2,152,463.32 and Y = 191,889.66 along the West boundary of said State Lease No. 724 to the point of beginning, containing approximately **1,400 acres**, all as more particularly outlined on a plat on file in the Office of Mineral Resources, Department of Natural Resources. All bearings, distances and coordinates are based on Louisiana Coordinate System of 1927, (North or South Zone), where applicable.

NOTE: The above description of the Tract nominated for lease has been provided and corrected, where required, exclusively by the nomination party. Any mineral lease selected from this Tract and awarded by the Louisiana State Mineral and Energy Board shall be without warranty of any

kind, either express, implied, or statutory, including, but not limited to, the implied warranties of merchantability and fitness for a particular purpose. Should the mineral lease awarded by the Louisiana State Mineral and Energy Board be subsequently modified, cancelled or abrogated due to the existence of conflicting leases, operating agreements, private claims or other future obligations or conditions which may affect all or any portion of the leased Tract, it shall not relieve the Lessee of the obligation to pay any bonus due thereon to the Louisiana State Mineral and Energy Board, nor shall the Louisiana State Mineral and Energy Board be obligated to refund any consideration paid by the Lessor prior to such modification, cancellation, or abrogation, including, but not limited to, bonuses, rentals and royalties.

NOTE: The State of Louisiana does hereby reserve, and this lease shall be subject to, the imprescriptible right of surface use in the nature of a servitude in favor of the Department of Natural Resources, including its Offices and Commissions, for the sole purpose of implementing, constructing, servicing and maintaining approved coastal zone management and/or restoration projects. Utilization of any and all rights derived under this lease by the mineral lessee, its agents, successors or assigns, shall not interfere with nor hinder the reasonable surface use by the Department of Natural Resources, its Offices or Commissions, as herein above reserved.

Applicant: CYPRESS ENERGY CORPORATION

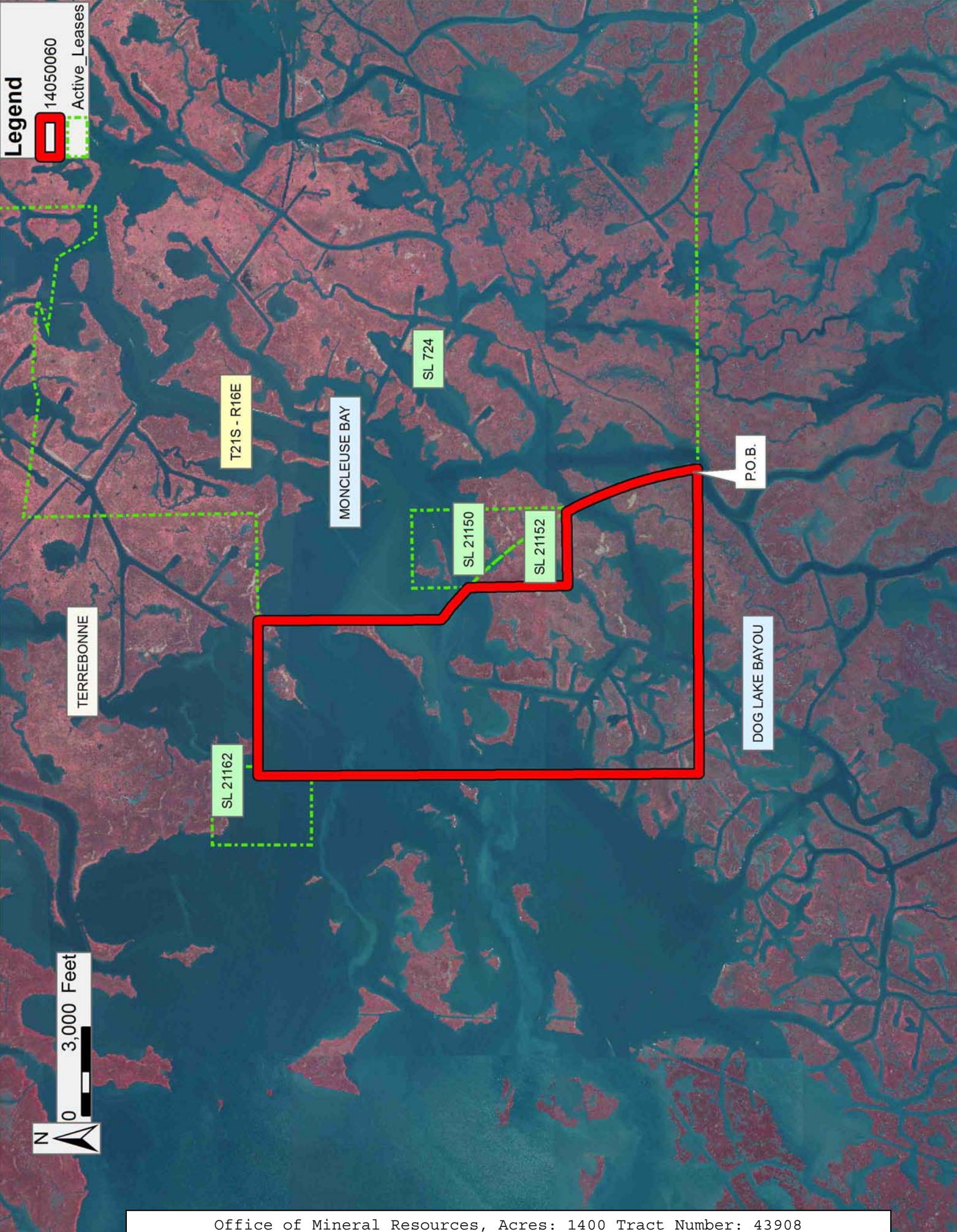
Bidder	Cash Payment	Price/Acre	Rental	Oil	Gas	Other

**Legend**

14050060



Active\_Leases





**TRACT 43909 - Terrebonne Parish, Louisiana**

All of the lands now or formerly constituting the beds and bottoms of all water bodies of every nature and description as to which title is vested in the State of Louisiana, together with all islands arising therein and other lands formed by accretion or by reliction, where allowed by law, excepting tax adjudicated lands, and not presently under mineral lease on May 14, 2014, situated in Terrebonne Parish, Louisiana, and more particularly described as follows: Beginning at a point having Coordinates of X = 2,162,818.04 and Y = 193,703.25; thence North 89 degrees 43 minutes 25 seconds East 2,718.30 feet to the Southwest corner of State Lease No. 724, as amended having Coordinates of X = 2,165,536.31 and Y = 193,716.36; thence North 89 degrees 43 minutes 25 seconds East 13,206.36 feet along the South boundary of said State Lease No. 724 to a point having Coordinates of X = 2,178,742.52 and Y = 193,780.06; thence South 13,587.79 feet to a point having Coordinates of X = 2,178,742.52 and Y = 180,192.27; thence South 89 degrees 28 minutes 57 seconds West 2,873.79 feet to a point having Coordinates of X = 2,175,868.84 and Y = 180,166.31; thence South 89 degrees 06 minutes 31 seconds West 13,052.38 feet to a point having Coordinates of X = 2,162,818.04 and Y = 179,963.28; thence North 13,739.97 feet to the point of beginning, containing approximately **2,376 acres**, all as more particularly outlined on a plat on file in the Office of Mineral Resources, Department of Natural Resources. All bearings, distances and coordinates are based on Louisiana Coordinate System of 1927, (North or South Zone), where applicable.

NOTE: The above description of the Tract nominated for lease has been provided and corrected, where required, exclusively by the nomination party. Any mineral lease selected from this Tract and awarded by the Louisiana State Mineral and Energy Board shall be without warranty of any kind, either express, implied, or statutory, including, but not limited to, the implied warranties of merchantability and fitness for a particular purpose. Should the mineral lease awarded by the Louisiana State Mineral and Energy Board be subsequently modified, cancelled or abrogated due to the existence of conflicting leases, operating agreements, private claims or other future obligations or conditions which may affect all or any portion of the leased Tract, it shall not relieve the Lessee of the obligation to pay any bonus due thereon to the Louisiana State Mineral and Energy Board, nor shall the Louisiana State Mineral and Energy Board be obligated to refund any consideration paid by the Lessor prior to such modification, cancellation, or abrogation, including, but not limited to, bonuses, rentals and royalties.

NOTE: The State of Louisiana does hereby reserve, and this lease shall be subject to, the imprescriptible right of surface use in the nature of a servitude in favor of the Department of Natural Resources, including its Offices and Commissions, for the sole purpose of implementing, constructing, servicing and maintaining approved coastal zone management and/or restoration projects. Utilization of any and all rights derived under this lease by the mineral lessee, its agents, successors or assigns,

shall not interfere with nor hinder the reasonable surface use by the Department of Natural Resources, its Offices or Commissions, as herein above reserved.

Applicant: CYPRESS ENERGY CORPORATION

Bidder	Cash Payment	Price/Acre	Rental	Oil	Gas	Other

**Legend**  
14050059  
Active\_Leases



0 3,000 Feet

T21S - R16E

TERREBONNE

SL 724

FOUR ISLAND BAYOU

P.O.B.

DOG LAKE

BAYOU COLYELL



**TRACT 43910 - Terrebonne Parish, Louisiana**

All of the lands now or formerly constituting the beds and bottoms of all water bodies of every nature and description as to which title is vested in the State of Louisiana, together with all islands arising therein and other lands formed by accretion or by reliction, where allowed by law, excepting tax adjudicated lands, and not presently under mineral lease on May 14, 2014, situated in Terrebonne Parish, Louisiana, and more particularly described as follows: Beginning at a point having Coordinates of X = 2,145,314.00 and Y = 193,372.85; thence North 88 degrees 17 minutes 35 seconds East 9,852.80 feet to a point having Coordinates of X = 2,155,162.43 and Y = 193,666.32; thence North 89 degrees 43 minutes 25 seconds East 7,655.70 feet to a point having Coordinates of X = 2,162,818.04 and Y = 193,703.25; thence South 13,739.97 feet to a point having Coordinates of X = 2,162,818.04 and Y = 179,963.28; thence South 89 degrees 06 minutes 31 seconds West 17,506.16 feet to a point having Coordinates of X = 2,145,314.00 and Y = 179,690.96; thence North 3,288.04 feet to the Southwest corner of State Lease No. 21164 having Coordinates having Coordinates of X = 2,145,314.00 and Y = 182,979.00; thence along the boundaries of said State Lease No. 21164 the following courses: East 4,196.00 feet to a point having Coordinates of X = 2,149,510.00 and Y = 182,979.00, North 4,887.00 feet to a point having Coordinates of X = 2,149,510.00 and Y = 187,866.00 and West 4,196.00 feet to a point having Coordinates of X = 2,145,314.00 and Y = 187,866.00; thence North 5,506.85 feet to the point of beginning, **LESS AND EXCEPT** any right, title, and interest in lands owned by and not under lease from the State of Louisiana, on behalf of the Terrebonne Parish School Board, situated in Section 16, Township 22 South, Range 16 East, Terrebonne Parish, Louisiana, contained within the above described tract, containing approximately **1,711 acres**, all as more particularly outlined on a plat on file in the Office of Mineral Resources, Department of Natural Resources. All bearings, distances and coordinates are based on Louisiana Coordinate System of 1927, (North or South Zone), where applicable.

NOTE: The above description of the Tract nominated for lease has been provided and corrected, where required, exclusively by the nomination party. Any mineral lease selected from this Tract and awarded by the Louisiana State Mineral and Energy Board shall be without warranty of any kind, either express, implied, or statutory, including, but not limited to, the implied warranties of merchantability and fitness for a particular purpose. Should the mineral lease awarded by the Louisiana State Mineral and Energy Board be subsequently modified, cancelled or abrogated due to the existence of conflicting leases, operating agreements, private claims or other future obligations or conditions which may affect all or any portion of the leased Tract, it shall not relieve the Lessee of the obligation to pay any bonus due thereon to the Louisiana State Mineral and Energy Board, nor shall the Louisiana State Mineral and Energy Board be obligated to refund any consideration paid by the Lessor prior to such modification, cancellation, or abrogation, including, but not limited to, bonuses, rentals and royalties.

NOTE: The State of Louisiana does hereby reserve, and this lease shall be subject to, the imprescriptible right of surface use in the nature of a servitude in favor of the Department of Natural Resources, including its Offices and Commissions, for the sole purpose of implementing, constructing, servicing and maintaining approved coastal zone management and/or restoration projects. Utilization of any and all rights derived under this lease by the mineral lessee, its agents, successors or assigns, shall not interfere with nor hinder the reasonable surface use by the Department of Natural Resources, its Offices or Commissions, as herein above reserved.

Applicant: CYPRESS ENERGY CORPORATION

Bidder	Cash Payment	Price/Acre	Rental	Oil	Gas	Other

**Legend**

14050058



Active\_Leases



TERREBONNE

HACKBERRY LAKE

T21S - R15E

P.O.B.

SL 21164

BAYOU DE L'OUEST

DOG LAKE

**TRACT 43911 - Terrebonne Parish, Louisiana**

All of the lands now or formerly constituting the beds and bottoms of all water bodies of every nature and description as to which title is vested in the State of Louisiana, together with all islands arising therein and other lands formed by accretion or by reliction, where allowed by law, excepting tax adjudicated lands, and not presently under mineral lease on May 14, 2014, situated in Terrebonne Parish, Louisiana, and more particularly described as follows: Beginning at a point having Coordinates of X = 2,134,123.90 and Y = 193,039.39; thence North 88 degrees 17 minutes 35 seconds 11,195.07 feet to a point having Coordinates of X = 2,145,314.00 and Y = 193,372.85; thence South 5,506.85 feet to a point on the North boundary of State Lease No. 21164 having Coordinates having Coordinates of X = 2,145,314.00 and Y = 187,866.00; thence along the boundaries of said State Lease No. 21164 the following courses: West 1,796.58 feet to a point having Coordinates of X = 2,143,517.42 and Y = 187,866.00, South 00 degrees 20 minutes 57 seconds East 2,379.77 feet to a point having Coordinates of X = 2,143,531.92 and Y = 185,486.28, North 88 degrees 53 minutes 02 seconds East 1,782.41 feet to a point having Coordinates of X = 2,145,314.00 and Y = 185,521.00 and South 2,542.00 feet to its Southwest corner having Coordinates of X = 2,145,314.00 and Y = 182,979.00; thence continue South 3,288.04 feet to a point having Coordinates of X = 2,145,314.00 and Y = 179,690.96; thence West 11,190.10 feet to a point having Coordinates of X = 2,134,123.90 and Y = 179,690.96; thence North 13,348.43 feet to the point of beginning, containing approximately **1,009 acres**, all as more particularly outlined on a plat on file in the Office of Mineral Resources, Department of Natural Resources. All bearings, distances and coordinates are based on Louisiana Coordinate System of 1927, (North or South Zone), where applicable.

NOTE: The above description of the Tract nominated for lease has been provided and corrected, where required, exclusively by the nomination party. Any mineral lease selected from this Tract and awarded by the Louisiana State Mineral and Energy Board shall be without warranty of any kind, either express, implied, or statutory, including, but not limited to, the implied warranties of merchantability and fitness for a particular purpose. Should the mineral lease awarded by the Louisiana State Mineral and Energy Board be subsequently modified, cancelled or abrogated due to the existence of conflicting leases, operating agreements, private claims or other future obligations or conditions which may affect all or any portion of the leased Tract, it shall not relieve the Lessee of the obligation to pay any bonus due thereon to the Louisiana State Mineral and Energy Board, nor shall the Louisiana State Mineral and Energy Board be obligated to refund any consideration paid by the Lessor prior to such modification, cancellation, or abrogation, including, but not limited to, bonuses, rentals and royalties.

NOTE: The State of Louisiana does hereby reserve, and this lease shall be subject to, the imprescriptible right of surface use in the nature of a servitude in favor of the Department of Natural Resources, including its

Offices and Commissions, for the sole purpose of implementing, constructing, servicing and maintaining approved coastal zone management and/or restoration projects. Utilization of any and all rights derived under this lease by the mineral lessee, its agents, successors or assigns, shall not interfere with nor hinder the reasonable surface use by the Department of Natural Resources, its Offices or Commissions, as herein above reserved.

Applicant: CYPRESS ENERGY CORPORATION

Bidder	Cash Payment	Price/Acre	Rental	Oil	Gas	Other



**Legend**



14050057



Active\_Leases



0 3,000 Feet



TERREBONNE

T21S - R15E

BAYOU GRAND CAILLOU

P.O.B.

SL 21164

GULF OF MEXICO

**TRACT 43912 - Portion of Blocks 120, and 121, South Timbalier Area, Revised, Terrebonne Parish, Louisiana**

All of the lands now or formerly constituting the beds and bottoms of all water bodies of every nature and description as to which title is vested in the State of Louisiana, together with all islands arising therein and other lands formed by accretion or by reliction, where allowed by law, excepting tax adjudicated lands, and not presently under mineral lease on May 14, 2014, situated in Terrebonne Parish, Louisiana, and more particularly described as follows: Beginning at a point having Coordinates of X = 2,233,340.06 and Y = 159,144.29; thence East 11,980.60 feet to a point having Coordinates of X = 2,245,320.66 and Y = 159,144.29; thence South 6,991.20 feet to a point on the Louisiana Coastline, as decreed by the Supreme Court of the United States, as determined by a Special Master appointed therein, in litigation styled United States v. State of Louisiana et al No. 9 Original, in 1975, having Coordinates of X = 2,245,320.66 and Y = 152,153.09; thence Southwesterly on a straight line along said Coastline to a point having Coordinates of X = 2,231,952.77 and Y = 148,890.52; thence North 1,693.64 feet to a point on the south boundary of State Lease No. 16943 having Coordinates of X = 2,231,952.77 and Y = 150,584.16; thence along the boundaries of said State Lease No. 16943 the following courses: East 1,387.29 feet to a point having Coordinates of X = 2,233,340.06 and Y = 150,584.16 and North 424.01 feet to its Northeast corner and the Southeast corner of State Lease No. 16942 having Coordinates of X = 2,233,340.06 and Y = 151,008.17; thence continue North 5,936.12 feet along the East boundary of said State Lease No. 16942 to its Northeast corner having Coordinates of X = 2,233,340.06 and Y = 156,944.29; thence continue North 2,200.00 feet to the point of beginning, containing approximately **2,373.49 acres**, all as more particularly outlined on a plat on file in the Office of Mineral Resources, Department of Natural Resources. All bearings, distances and coordinates are based on Louisiana Coordinate System of 1927, (North or South Zone), where applicable.

NOTE: The above description of the Tract nominated for lease has been provided and corrected, where required, exclusively by the nomination party. Any mineral lease selected from this Tract and awarded by the Louisiana State Mineral and Energy Board shall be without warranty of any kind, either express, implied, or statutory, including, but not limited to, the implied warranties of merchantability and fitness for a particular purpose. Should the mineral lease awarded by the Louisiana State Mineral and Energy Board be subsequently modified, cancelled or abrogated due to the existence of conflicting leases, operating agreements, private claims or other future obligations or conditions which may affect all or any portion of the leased Tract, it shall not relieve the Lessee of the obligation to pay any bonus due thereon to the Louisiana State Mineral and Energy Board, nor shall the Louisiana State Mineral and Energy Board be obligated to refund any consideration paid by the Lessor prior to such modification, cancellation, or abrogation, including, but not limited to, bonuses, rentals and royalties.




NOTE: The State of Louisiana does hereby reserve, and this lease shall be subject to, the imprescriptible right of surface use in the nature of a servitude in favor of the Department of Natural Resources, including its Offices and Commissions, for the sole purpose of implementing, constructing, servicing and maintaining approved coastal zone management and/or restoration projects. Utilization of any and all rights derived under this lease by the mineral lessee, its agents, successors or assigns, shall not interfere with nor hinder the reasonable surface use by the Department of Natural Resources, its Offices or Commissions, as herein above reserved.

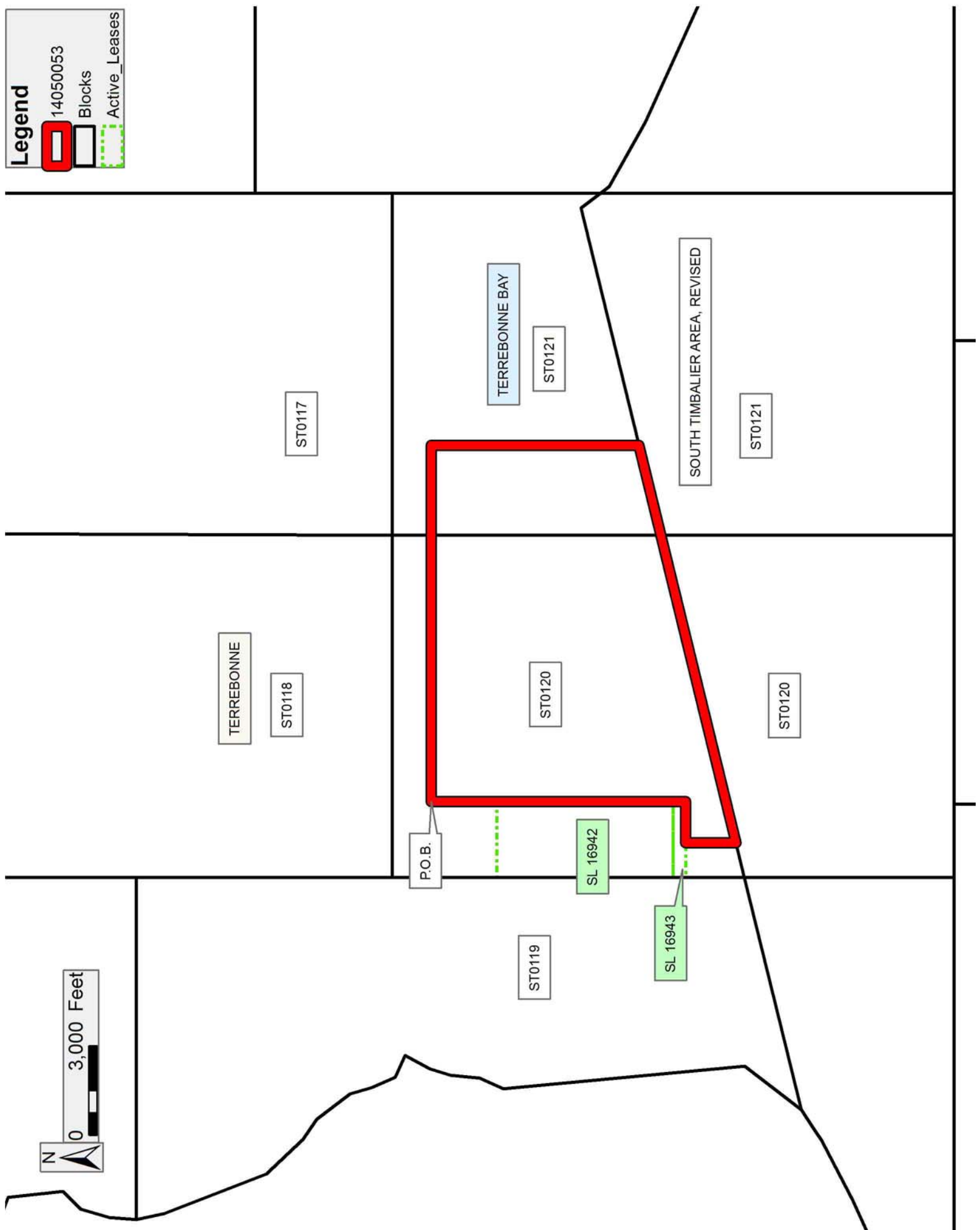
NOTE: It appears, according to our records, that a portion of this Tract is located within the restrictive safety fairway area as set out by the Corps of Engineers, U.S. Army and/or the restrictive anchorage area as set out by the U.S. Coast Guard.

Applicant: CYPRESS ENERGY CORPORATION

Bidder	Cash Payment	Price/Acre	Rental	Oil	Gas	Other

**Legend**

-  14050053
-  Blocks
-  Active\_Leases



**TRACT 43913 - Portion of Blocks 119, and 120, South Timbalier Area, Revised, Terrebonne Parish, Louisiana**

All of the lands now or formerly constituting the beds and bottoms of all water bodies of every nature and description as to which title is vested in the State of Louisiana, together with all islands arising therein and other lands formed by accretion or by reliction, where allowed by law, excepting tax adjudicated lands, and not presently under mineral lease on May 14, 2014, situated in Terrebonne Parish, Louisiana, and more particularly described as follows:

Beginning at a point on the South boundary of State Lease No. 188, as amended having Coordinates of X = 2,213,472.77 and Y = 149,367.68; thence along the boundaries of said State Lease No. 188 the following courses: North 89 degrees 39 minutes 55 seconds East 10,881.38 feet to a point having Coordinates of X = 2,224,353.97 and Y = 149,431.25 and North 05 degrees 24 minutes 00 seconds West 3,961.34 feet to a point on the West boundary of State Lease No. 2620, as amended having Coordinates of X = 2,223,981.20 and Y = 153,374.65; thence along the boundaries of said State Lease No. 2620 the following courses: North 84 degrees 36 minutes 00 seconds East 30.02 feet to a point having Coordinates of X = 2,224,011.09 and Y = 153,377.49, South 08 degrees 18 minutes 39 seconds East 442.13 feet, South 12 degrees 27 minutes 30 second East 440.37 feet, South 16 degrees 15 minutes 37 second East 500.00 feet, South 21 degrees 17 minutes 11 seconds East 413.19 feet, South 24 degrees 19 minutes 10 seconds East 570.64 feet, South 22 degrees 34 minutes 46 seconds East 546.92 feet, South 19 degrees 37 minutes 04 seconds East 536.12 feet to a point having Coordinates of X = 2,225,085.00 and Y = 150,115.00, North 66 degrees 59 minutes 07 seconds East 613.86 feet and North 60 degrees 56 minutes 43 seconds East 72.10 feet to the Southwest corner of State Lease No. 16970 having Coordinates of X = 2,225,713.02 and Y = 150,390.00; thence along the boundaries of said State Lease No. 16970 the following courses: East 5,058.70 feet to a point having Coordinates of X = 2,230,771.72 and Y = 150,390.00 and North 194.16 feet to the Southwest corner of State Lease No. 16943 having Coordinates of X = 2,230,771.72 and Y = 150,584.16; thence East 1,181.05 feet along the south boundary of said State Lease No. 16943 to a point having Coordinates of X = 2,231,952.77 and Y = 150,584.16; thence South 1,693.64 feet to a point on the Louisiana Coastline, as decreed by the Supreme Court of the United States, as determined by a Special Master appointed therein, in litigation styled *United States v. State of Louisiana et al No. 9 Original*, in 1975, having Coordinates of X = 2,231,952.77 and Y = 148,890.52; thence Southwesterly on a straight line along said Coastline to a point having Coordinates of X = 2,223,166.77 and Y = 146,746.20; thence North 1,632.80 feet to a point having Coordinates of X = 2,223,166.77 and Y = 148,379.00; thence West 2,033.64 feet to a point having Coordinates of X = 2,221,133.14 and Y = 148,379.00; thence South 30 degrees 33 minutes 56 seconds West 1,919.57 feet to a point having Coordinates of X = 2,220,156.99 and Y = 146,726.15; thence South 71 degree 20 minutes 26 seconds West 4,149.83 feet to a point having Coordinates of X = 2,216,225.28 and Y = 145,398.45; thence North 87 degrees 44 minutes 42

seconds West 2,754.64 feet to a point having Coordinates of X = 2,213,472.77 and Y = 145,506.84; thence North 3,860.85 feet to the point of beginning, containing approximately **1,155.73 acres**, all as more particularly outlined on a plat on file in the Office of Mineral Resources, Department of Natural Resources. All bearings, distances and coordinates are based on Louisiana Coordinate System of 1927, (North or South Zone), where applicable.





NOTE: The above description of the Tract nominated for lease has been provided and corrected, where required, exclusively by the nomination party. Any mineral lease selected from this Tract and awarded by the Louisiana State Mineral and Energy Board shall be without warranty of any kind, either express, implied, or statutory, including, but not limited to, the implied warranties of merchantability and fitness for a particular purpose. Should the mineral lease awarded by the Louisiana State Mineral and Energy Board be subsequently modified, cancelled or abrogated due to the existence of conflicting leases, operating agreements, private claims or other future obligations or conditions which may affect all or any portion of the leased Tract, it shall not relieve the Lessee of the obligation to pay any bonus due thereon to the Louisiana State Mineral and Energy Board, nor shall the Louisiana State Mineral and Energy Board be obligated to refund any consideration paid by the Lessor prior to such modification, cancellation, or abrogation, including, but not limited to, bonuses, rentals and royalties.

NOTE: The State of Louisiana does hereby reserve, and this lease shall be subject to, the imprescriptible right of surface use in the nature of a servitude in favor of the Department of Natural Resources, including its Offices and Commissions, for the sole purpose of implementing, constructing, servicing and maintaining approved coastal zone management and/or restoration projects. Utilization of any and all rights derived under this lease by the mineral lessee, its agents, successors or assigns, shall not interfere with nor hinder the reasonable surface use by the Department of Natural Resources, its Offices or Commissions, as herein above reserved.

Applicant: CYPRESS ENERGY CORPORATION

Bidder	Cash Payment	Price/Acre	Rental	Oil	Gas	Other

**Legend**

-  14050052
-  Wildlife
-  Blocks
-  Active\_Leases

