

TRACT 43914 - Red River Parish, Louisiana

A certain Tract of land, excluding the beds and bottoms of all navigable waters, belonging to and not presently under mineral lease from Louisiana Department Of Wildlife And Fisheries on May 14, 2014, being more fully described as follows: The N/2 of SW/4 of Section 11, Township 14 North, Range 12 West, Red River Parish, Louisiana, being designated as Tract 12 in the Chesapeake Operating, Inc., HA RA SUZ, Order No. 1145-B-25, containing **79.951 acres**, all as more particularly outlined on a plat on file in the Office of Mineral Resources, Department of Natural Resources. The description is based on information provided by the State Agency regarding location and ownership of surface and mineral rights. All bearings, distances and coordinates, if applicable, are based on Louisiana Coordinate System of 1927, (North or South Zone).

NOTE: The above description of the Tract nominated for lease has been provided and corrected, where required, exclusively by the nomination party. Any mineral lease selected from this Tract and awarded by the Louisiana State Mineral and Energy Board shall be without warranty of any kind, either express, implied, or statutory, including, but not limited to, the implied warranties of merchantability and fitness for a particular purpose. Should the mineral lease awarded by the Louisiana State Mineral and Energy Board be subsequently modified, cancelled or abrogated due to the existence of conflicting leases, operating agreements, private claims or other future obligations or conditions which may affect all or any portion of the leased Tract, it shall not relieve the Lessee of the obligation to pay any bonus due thereon to the Louisiana State Mineral and Energy Board, nor shall the Louisiana State Mineral and Energy Board be obligated to refund any consideration paid by the Lessor prior to such modification, cancellation, or abrogation, including, but not limited to, bonuses, rentals and royalties.

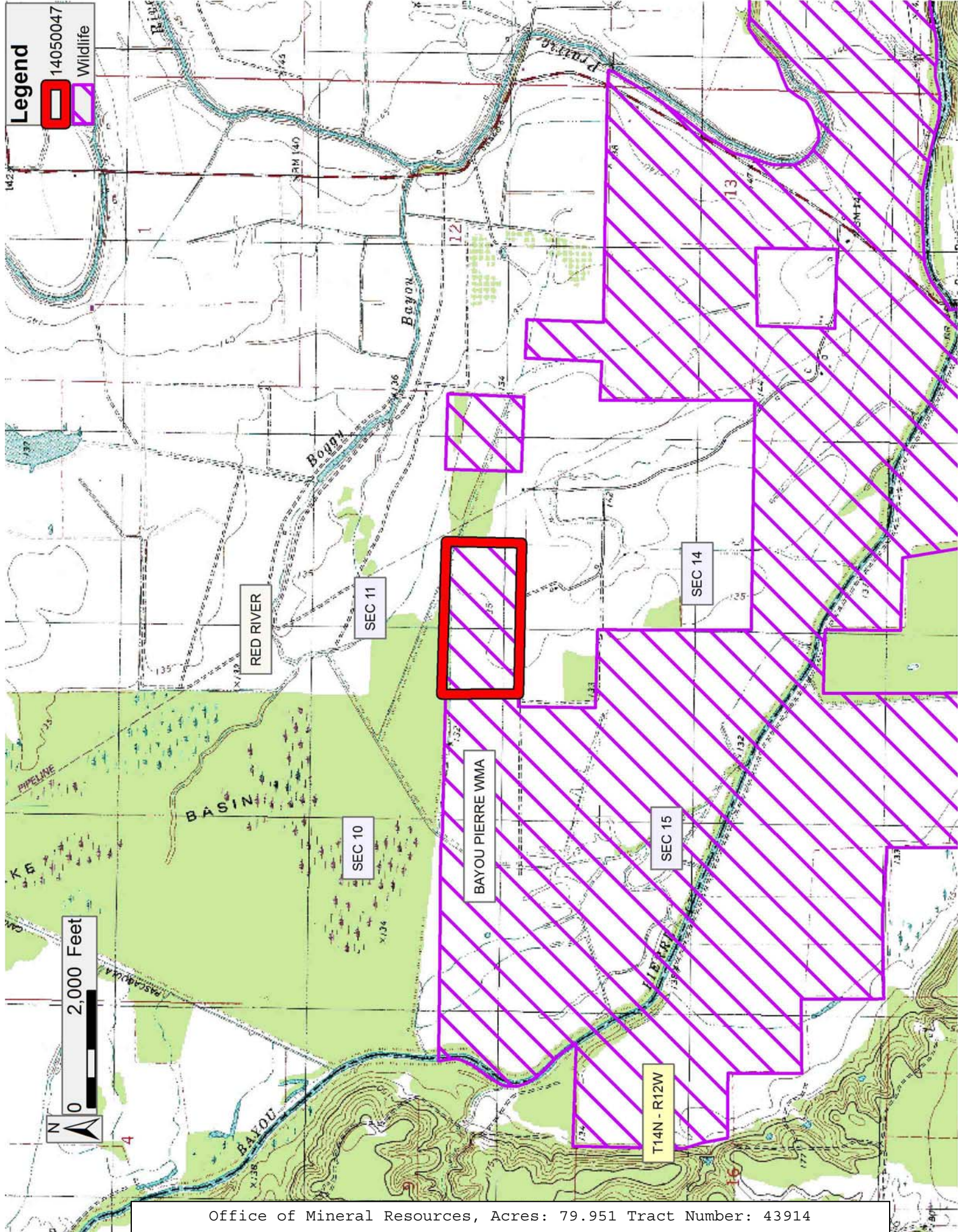
NOTE: NO PORTION BIDS WILL BE ACCEPTED.

NOTE: The proposed tract participates in production from currently one unit well, the HA RA SUZ; Clinton 11-14-12H No. 1 (SN 241788) that initially tested July 12, 2011 at a rate of 16,613 MCFD. Since the unit was completed in July, 2011, the HA RA SUZ unit cumulative production through December, 2013 is 4,595,640 MCF, according to the Louisiana Office of Conservation production records.

NOTE: This is an Agency Tract and ordinarily, bonus, rentals and royalty payment are made to the agency. However, due to an agreement between the State and WL&F, all payments are to be made to the Office of Mineral Resources.

Bidder	Cash Payment	Price/Acre	Rental	Oil	Gas	Other

Applicant: STAFF OFFICE OF MINERAL RESOURCES to Agency and by Resolution from the Louisiana Department Of Wildlife And Fisheries authorizing the Mineral Board to act in its behalf



Legend
14050047
Wildlife

0 2,000 Feet
N

TRACT 43915 - Red River Parish, Louisiana

A certain Tract of land, excluding the beds and bottoms of all navigable waters, belonging to and not presently under mineral lease from Louisiana Department Of Wildlife And Fisheries on May 14, 2014, being more fully described as follows: The E/2 of SW/4 of SW/4 of Section 12, Township 14 North, Range 12 West, Red River Parish, Louisiana, being designated as Tract 8 in the Chesapeake Operating, Inc., HA RA SUAA, Order Number 1145-B-25, containing **20.001 acres**, all as more particularly outlined on a plat on file in the Office of Mineral Resources, Department of Natural Resources. The description is based on information provided by the State Agency regarding location and ownership of surface and mineral rights. All bearings, distances and coordinates, if applicable, are based on Louisiana Coordinate System of 1927, (North or South Zone).

NOTE: The above description of the Tract nominated for lease has been provided and corrected, where required, exclusively by the nomination party. Any mineral lease selected from this Tract and awarded by the Louisiana State Mineral and Energy Board shall be without warranty of any kind, either express, implied, or statutory, including, but not limited to, the implied warranties of merchantability and fitness for a particular purpose. Should the mineral lease awarded by the Louisiana State Mineral and Energy Board be subsequently modified, cancelled or abrogated due to the existence of conflicting leases, operating agreements, private claims or other future obligations or conditions which may affect all or any portion of the leased Tract, it shall not relieve the Lessee of the obligation to pay any bonus due thereon to the Louisiana State Mineral and Energy Board, nor shall the Louisiana State Mineral and Energy Board be obligated to refund any consideration paid by the Lessor prior to such modification, cancellation, or abrogation, including, but not limited to, bonuses, rentals and royalties.

NOTE: NO PORTION BIDS WILL BE ACCEPTED.

NOTE: The lease shall be depth limited to all sands below the base of the Cotton Valley Formation, Reservoir A, in the Thorn Lake Field, initially defined in Office of Conservation Order No. 1145 effective July 31, 1981, and re-defined by the 1145-A Series of Orders.

NOTE: The proposed tract participates in production from currently one unit well, the Chesapeake Operating, Inc. well HA RA SUAA; Waerstad 12-14-12H No. 1 (SN 241250) that initially tested January 20, 2011 at a rate of 17,214 MCFD. Since the unit was completed in 2011, the HA RA SUAA unit cumulative production through December, 2013 is 7,026,173 MCF, according to the Louisiana Office of Conservation production records.

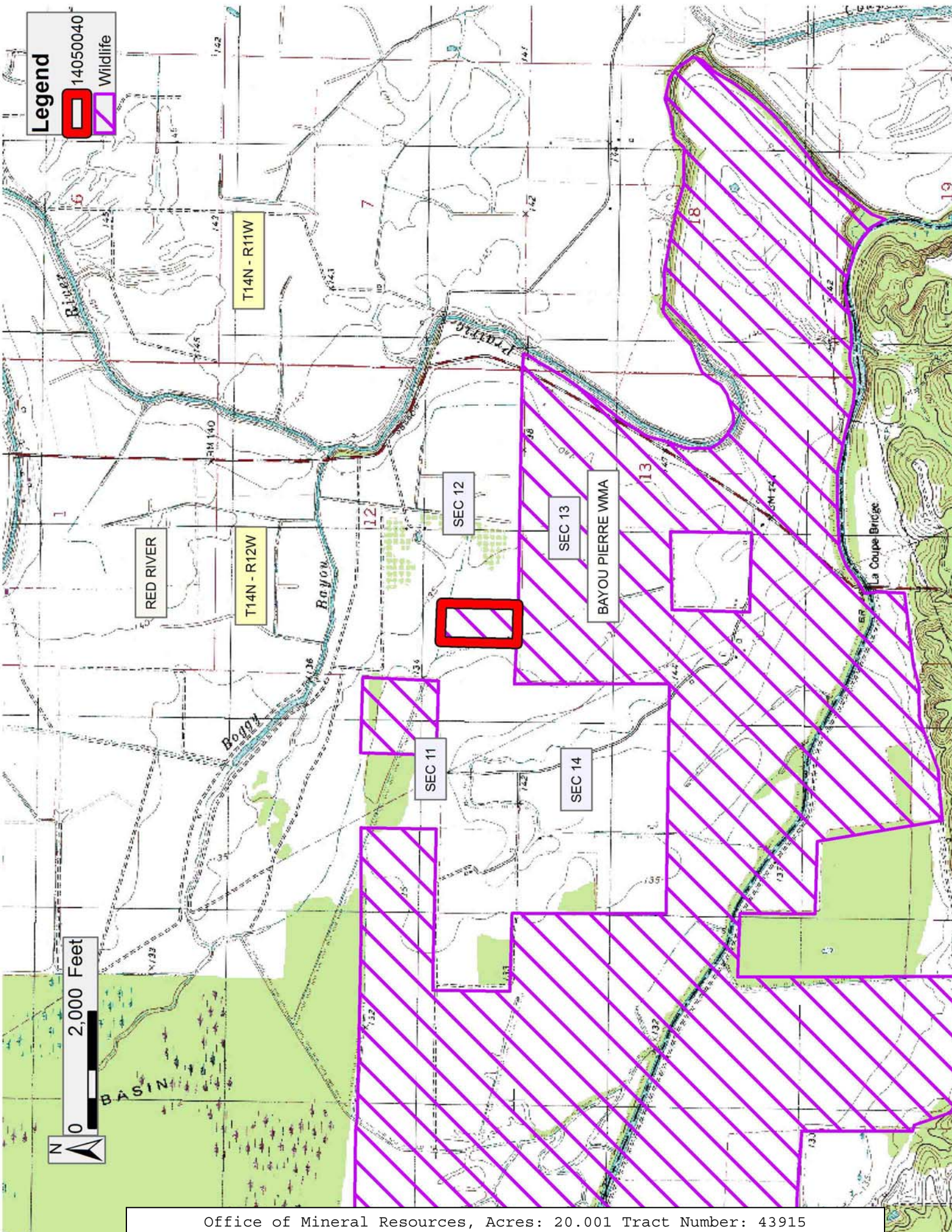
NOTE: The primary term of this lease on property which is subject to the aforesaid litigation shall be three years following a final, non-appealable judgment in the aforesaid litigation, until a mutually agreeable compromise among the litigating parties is effected, or a

period of ten years from the date this lease is awarded has elapsed, whichever comes first.

NOTE: This is an Agency Tract and ordinarily, bonus, rentals and royalty payments are made to the agency. However, due to an agreement between the State and WL&F, all payments are to be made to the Office of Mineral Resources.

Applicant: STAFF OFFICE OF MINERAL RESOURCES to Agency and by Resolution from the Louisiana Department Of Wildlife And Fisheries authorizing the Mineral Board to act in its behalf

Bidder	Cash Payment	Price/Acre	Rental	Oil	Gas	Other



Legend

- 14050040
- Wildlife

RED RIVER

T14N - R12W

T14N - R11W

SEC 12

SEC 13

BAYOU PIERRE WMA

SEC 11

SEC 14

2,000 Feet



TRACT 43916 - Red River Parish, Louisiana

A certain Tract of land, excluding the beds and bottoms of all navigable waters, belonging to and not presently under mineral lease from Louisiana Department Of Wildlife And Fisheries on May 14, 2014, being more fully described as follows: The portion of the NE/4 of SE/4 of Section 15, Township 14 North, Range 12 West, the portion of the NE/4 of Section 15, T14N, R12W, and the portion of the NW/4 of Section 15, T14N, R12W all lying North and/or East of Bayou Pierre, Red River Parish, Louisiana, and being designated as Tract 2A in the Chesapeake Operating, Inc., HA RA SUS, Order No. 1145-B-25, less and except portions of State Lease 19181 and State Lease 19180, containing **235.424 acres**, all as more particularly outlined on a plat on file in the Office of Mineral Resources, Department of Natural Resources. The description is based on information provided by the State Agency regarding location and ownership of surface and mineral rights. All bearings, distances and coordinates, if applicable, are based on Louisiana Coordinate System of 1927, (North or South Zone).

NOTE: The above description of the Tract nominated for lease has been provided and corrected, where required, exclusively by the nomination party. Any mineral lease selected from this Tract and awarded by the Louisiana State Mineral and Energy Board shall be without warranty of any kind, either express, implied, or statutory, including, but not limited to, the implied warranties of merchantability and fitness for a particular purpose. Should the mineral lease awarded by the Louisiana State Mineral and Energy Board be subsequently modified, cancelled or abrogated due to the existence of conflicting leases, operating agreements, private claims or other future obligations or conditions which may affect all or any portion of the leased Tract, it shall not relieve the Lessee of the obligation to pay any bonus due thereon to the Louisiana State Mineral and Energy Board, nor shall the Louisiana State Mineral and Energy Board be obligated to refund any consideration paid by the Lessor prior to such modification, cancellation, or abrogation, including, but not limited to, bonuses, rentals and royalties.

NOTE: NO PORTION BIDS WILL BE ACCEPTED.

NOTE: The proposed tract participates in production from currently one unit well, the HA RA SUS; LDW&F 15-14-12H No. 1 (SN 241465) that initially tested January 12, 2011, at a rate of 17,025 MCFD. Since the unit was completed in 2011, the HA RA SUS unit cumulative production through December, 2013 is 5,119,071 MCF, according to the Louisiana Office of Conservation production records.




NOTE: The primary term of this lease on property which is subject to the aforesaid litigation shall be three years following a final, non-appealable judgment in the aforesaid litigation, until a mutually agreeable compromise among the litigating parties is effected, or a period of ten years from the date this lease is awarded has elapsed, whichever comes first.

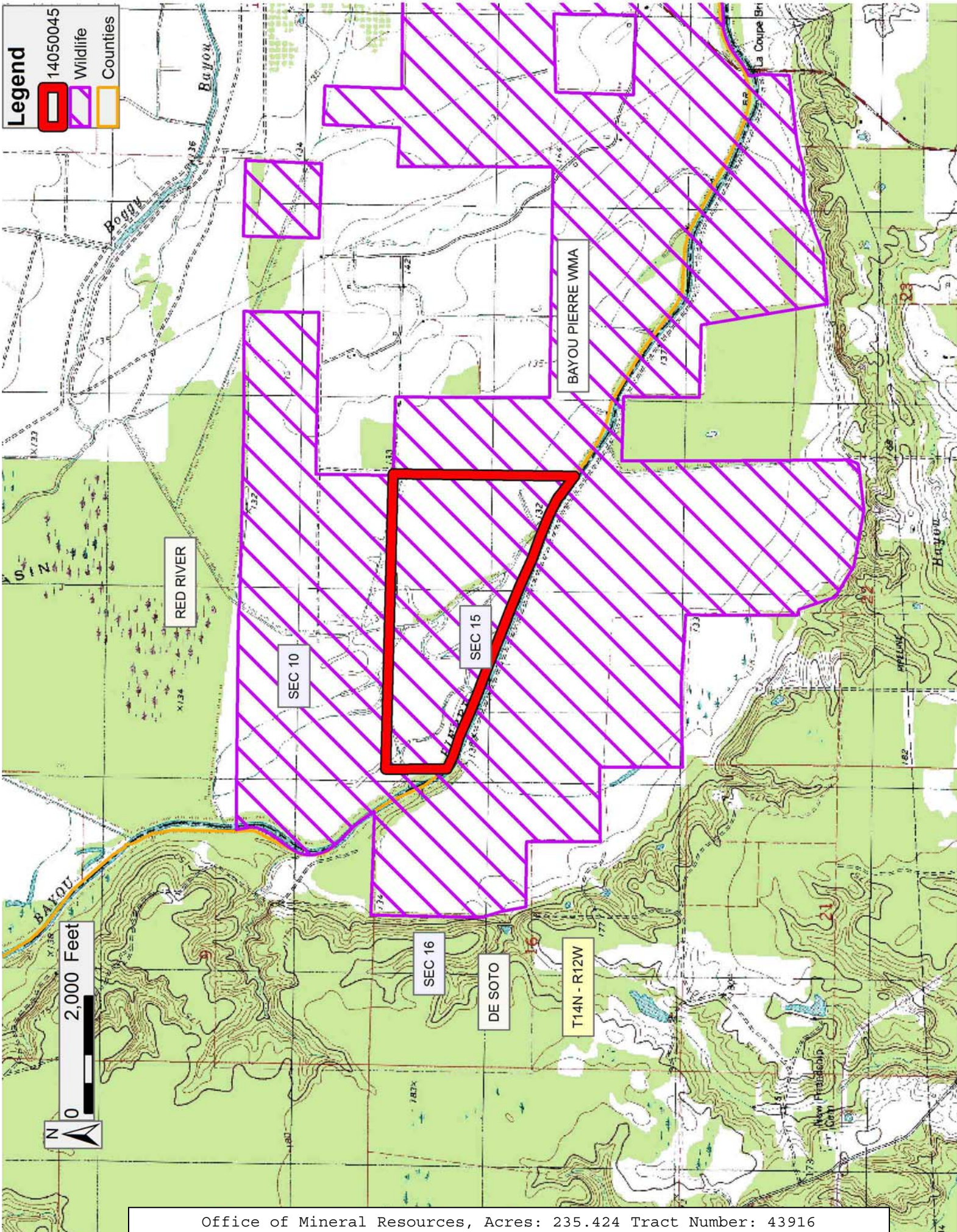
NOTE: This is an Agency Tract and ordinarily, bonus, rentals and royalty payment are made to the agency. However, due to an agreement between the State and WL&F, all payments are to be made to the Office of Mineral Resources.

Applicant: STAFF OFFICE OF MINERAL RESOURCES to Agency and by Resolution from the Louisiana Department Of Wildlife And Fisheries authorizing the Mineral Board to act in its behalf

Bidder	Cash Payment	Price/Acre	Rental	Oil	Gas	Other

Legend

-  14050045
-  Wildlife
-  Counties



TRACT 43917 - Red River Parish, Louisiana

A certain Tract of land, excluding the beds and bottoms of all navigable waters, belonging to and not presently under mineral lease from Louisiana Department Of Wildlife And Fisheries on May 14, 2014, being more fully described as follows: The lands located in the NW/4 of NW/4 of Section 14, SW/4 of NW/4 of Section 14, that portion of the N/2 of SW/4 of Section 14, all being in Township 14 North, Range 12 West, lying North and/or East of Bayou Pierre, Red River Parish, Louisiana, designated as Tract 3B, containing 63.76 acres, and Tract 4, containing 78.477 acres, both in Unit Survey for the HA RA SUBB, prepared by John R. Bowman & Associates, Inc., revised June 3, 2013, comprising an aggregate of **142.237 acres**, all as more particularly outlined on a plat on file in the Office of Mineral Resources, Department of Natural Resources. The description is based on information provided by the State Agency regarding location and ownership of surface and mineral rights. All bearings, distances and coordinates, if applicable, are based on Louisiana Coordinate System of 1927, (North or South Zone).

NOTE: The above description of the Tract nominated for lease has been provided and corrected, where required, exclusively by the nomination party. Any mineral lease selected from this Tract and awarded by the Louisiana State Mineral and Energy Board shall be without warranty of any kind, either express, implied, or statutory, including, but not limited to, the implied warranties of merchantability and fitness for a particular purpose. Should the mineral lease awarded by the Louisiana State Mineral and Energy Board be subsequently modified, cancelled or abrogated due to the existence of conflicting leases, operating agreements, private claims or other future obligations or conditions which may affect all or any portion of the leased Tract, it shall not relieve the Lessee of the obligation to pay any bonus due thereon to the Louisiana State Mineral and Energy Board, nor shall the Louisiana State Mineral and Energy Board be obligated to refund any consideration paid by the Lessor prior to such modification, cancellation, or abrogation, including, but not limited to, bonuses, rentals and royalties.

NOTE: NO PORTION BIDS WILL BE ACCEPTED.

NOTE: The proposed tract participates in production from currently one unit well, the HA RA SUBB; Bethard Corp 14H No. 1 (SN 242569) that initially tested July 1, 2011 at a rate of 8,433 MCFD. Since the unit was completed in July 1, 2011, the HA RA SUBB unit cumulative production through December, 2013 is 5,643,965 MCF, according to the Louisiana Office of Conservation production records.

NOTE: The primary term of this lease on property which is subject to the aforesaid litigation shall be three years following a final, non-appealable judgment in the aforesaid litigation, until a mutually agreeable compromise among the litigating parties is effected, or a

period of ten years from the date this lease is awarded has elapsed, whichever comes first.

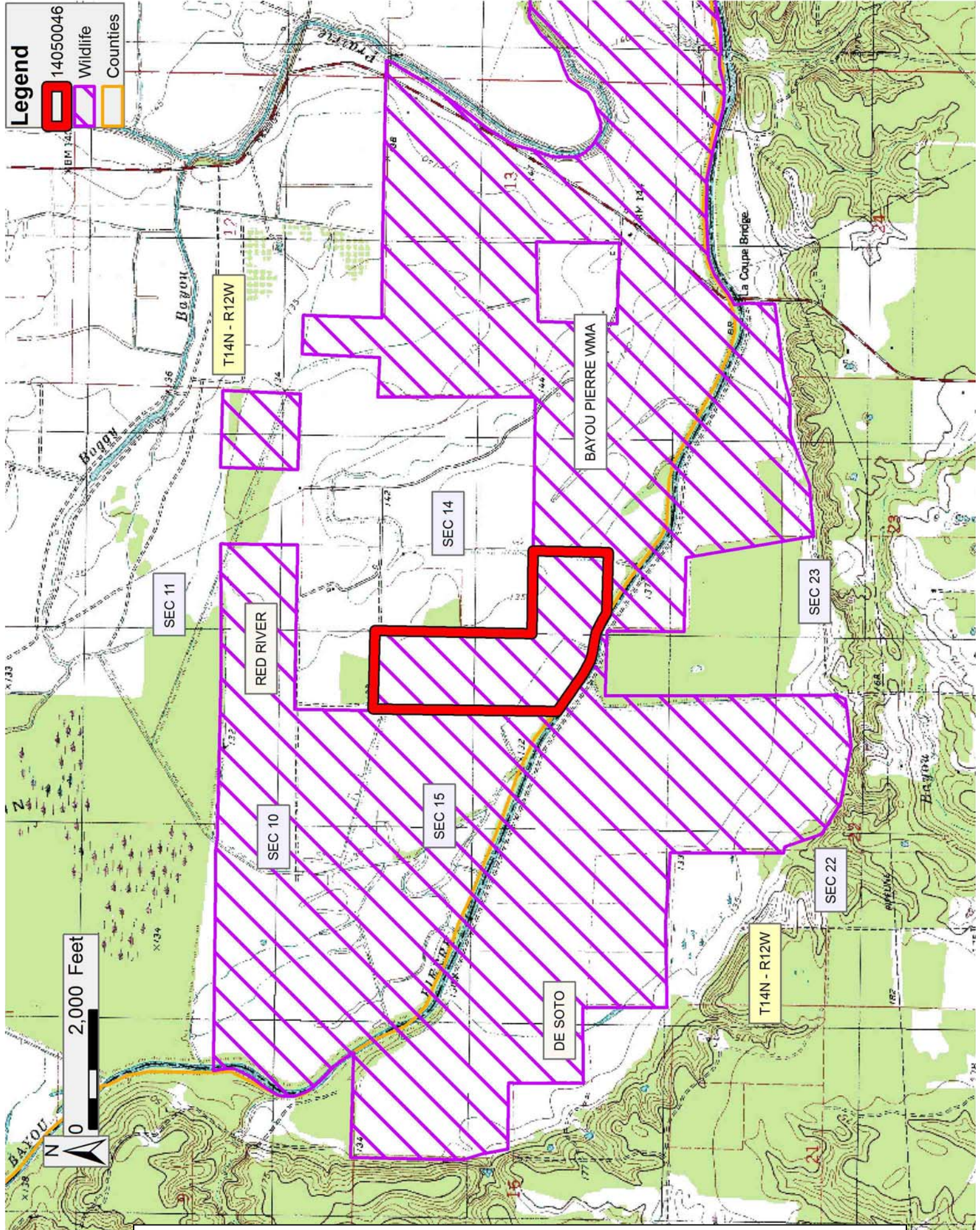
NOTE: This is an Agency Tract and ordinarily, bonus, rentals and royalty payment are made to the agency. However, due to an agreement between the State and WL&F, all payments are to be made to the Office of Mineral Resources.

Applicant: STAFF OFFICE OF MINERAL RESOURCES to Agency and by Resolution from the Louisiana Department Of Wildlife And Fisheries authorizing the Mineral Board to act in its behalf

Bidder	Cash Payment	Price/Acre	Rental	Oil	Gas	Other

Legend

- 14050046
- Wildlife
- Counties



TRACT 43918 - Red River Parish, Louisiana

A certain Tract of land, excluding the beds and bottoms of all navigable waters, belonging to and not presently under mineral lease from Louisiana Department Of Wildlife And Fisheries on May 14, 2014, being more fully described as follows: The NW/4 of Section 13, Township 14 North, Range 12 West, Red River Parish, Louisiana, being designated as Tract 1A of Unit Survey for the HA RA SUCC, prepared by John R. Bowman & Associates, Inc., revised June 3, 2013, containing **160.372 acres**, all as more particularly outlined on a plat on file in the Office of Mineral Resources, Department of Natural Resources. The description is based on information provided by the State Agency regarding location and ownership of surface and mineral rights. All bearings, distances and coordinates, if applicable, are based on Louisiana Coordinate System of 1927, (North or South Zone).

NOTE: The above description of the Tract nominated for lease has been provided and corrected, where required, exclusively by the nomination party. Any mineral lease selected from this Tract and awarded by the Louisiana State Mineral and Energy Board shall be without warranty of any kind, either express, implied, or statutory, including, but not limited to, the implied warranties of merchantability and fitness for a particular purpose. Should the mineral lease awarded by the Louisiana State Mineral and Energy Board be subsequently modified, cancelled or abrogated due to the existence of conflicting leases, operating agreements, private claims or other future obligations or conditions which may affect all or any portion of the leased Tract, it shall not relieve the Lessee of the obligation to pay any bonus due thereon to the Louisiana State Mineral and Energy Board, nor shall the Louisiana State Mineral and Energy Board be obligated to refund any consideration paid by the Lessor prior to such modification, cancellation, or abrogation, including, but not limited to, bonuses, rentals and royalties.

NOTE: NO PORTION BIDS WILL BE ACCEPTED.

NOTE: The lease shall be depth limited to all sands below the base of the Cotton Valley Formation, Reservoir A, in the Thorn Lake Field, initially defined in Office of Conservation Order No. 1145 effective July 31, 1981, and re-defined by the 1145-A Series of Orders.

NOTE: The proposed tract participates in production from currently one unit well, the HA RA SUCC; Bethard Corp 13H No. 1 (SN 242568) that initially tested July 1, 2011, at a rate of 8,493 MCFD. Since the unit was completed in 2011, the HA RA SUCC unit cumulative production through December, 2013 is 5,387,782 MCF, according to the Louisiana Office of Conservation production records.

NOTE: The primary term of this lease on property which is subject to the aforesaid litigation shall be three years following a final, non-appealable judgment in the aforesaid litigation, until a mutually agreeable compromise among the litigating parties is effected, or a

period of ten years from the date this lease is awarded has elapsed, whichever comes first.

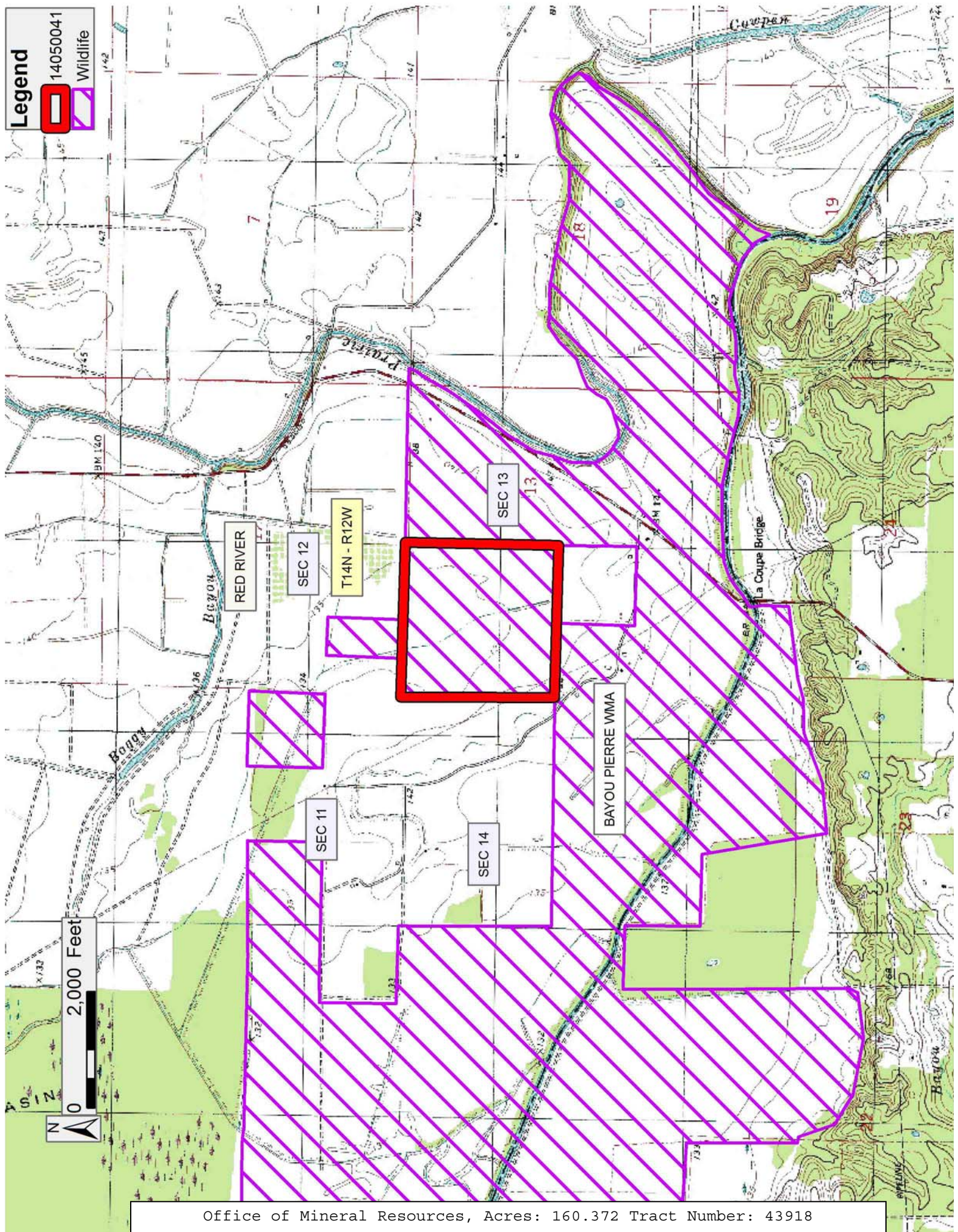
NOTE: This is an Agency Tract and ordinarily, bonus, rentals and royalty payments are made to the agency. However, due to an agreement between the State and WL&F, all payments are to be made to the Office of Mineral Resources.

Applicant: STAFF OFFICE OF MINERAL RESOURCES to Agency and by Resolution from the Louisiana Department Of Wildlife And Fisheries authorizing the Mineral Board to act in its behalf

Bidder	Cash Payment	Price/Acre	Rental	Oil	Gas	Other

Legend

- 14050041
- Wildlife



TRACT 43919 - Red River Parish, Louisiana

A certain Tract of land, excluding the beds and bottoms of all navigable waters, belonging to and not presently under mineral lease from Louisiana Department Of Wildlife And Fisheries on May 14, 2014, being more fully described as follows: The SE/4 of SW/4; and beginning at the NW/corner of SW/4 of SE/4 a triangular tract of land located in the W/2 of SE/4 (comprising approximately 3 acres) all located in Section 13, Township 14 North, Range 12 West, Red River Parish, Louisiana, being designated as Tract 1C on the Unit Survey Plat for the HA RA SUCC, prepared by John R. Bowman & Associates, Inc., revised June 3, 2013, containing **41.813 acres**, all as more particularly outlined on a plat on file in the Office of Mineral Resources, Department of Natural Resources. The description is based on information provided by the State Agency regarding location and ownership of surface and mineral rights. All bearings, distances and coordinates, if applicable, are based on Louisiana Coordinate System of 1927, (North or South Zone).

NOTE: The above description of the Tract nominated for lease has been provided and corrected, where required, exclusively by the nomination party. Any mineral lease selected from this Tract and awarded by the Louisiana State Mineral and Energy Board shall be without warranty of any kind, either express, implied, or statutory, including, but not limited to, the implied warranties of merchantability and fitness for a particular purpose. Should the mineral lease awarded by the Louisiana State Mineral and Energy Board be subsequently modified, cancelled or abrogated due to the existence of conflicting leases, operating agreements, private claims or other future obligations or conditions which may affect all or any portion of the leased Tract, it shall not relieve the Lessee of the obligation to pay any bonus due thereon to the Louisiana State Mineral and Energy Board, nor shall the Louisiana State Mineral and Energy Board be obligated to refund any consideration paid by the Lessor prior to such modification, cancellation, or abrogation, including, but not limited to, bonuses, rentals and royalties.

NOTE: NO PORTION BIDS WILL BE ACCEPTED.

NOTE: The proposed tract participates in production from currently one unit well, the HA RA SUCC; Bethard Corp 13H No. 1 (SN 242568) that initially tested July 1, 2011 at a rate of 8,493 MCFD. Since the unit was completed in July 1, 2011, the HA RA SUCC unit cumulative production through December, 2013 is 5,387,782 MCF, according to the Louisiana Office of Conservation production records.

NOTE: This lease shall be depth limited to all sands below the base of the Cotton Valley Formation, Reservoir A, in the Thorn Lake Field, initially defined in Office of Conservation No. 1145 effective July 31, 1981, and re-defined by the 1145-A Series of Orders.

NOTE: The primary term of this lease on property which is subject to the aforesaid litigation shall be three years following a final, non-appealable judgment in the aforesaid litigation, until a mutually agreeable compromise among the litigating parties is effected, or a period of ten years from the date this lease is awarded has elapsed, whichever comes first.

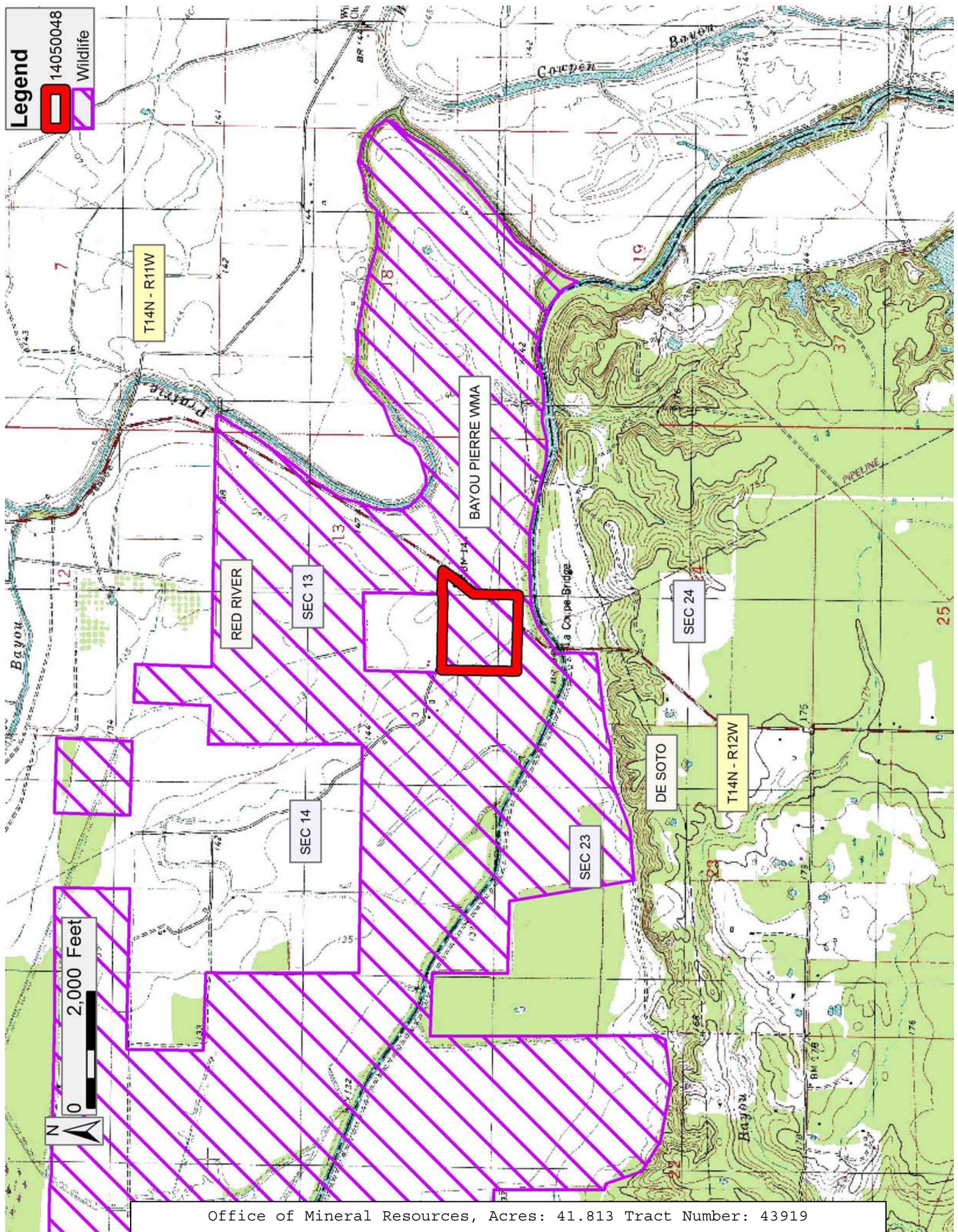
NOTE: This is an Agency Tract and ordinarily, bonus, rentals and royalty payment are made to the agency. However, due to an agreement between the State and WL&F, all payments are to be made to the Office of Mineral Resources.

Applicant: STAFF OFFICE OF MINERAL RESOURCES to Agency and by Resolution from the Louisiana Department Of Wildlife And Fisheries authorizing the Mineral Board to act in its behalf

Bidder	Cash Payment	Price/Acre	Rental	Oil	Gas	Other

Legend

- 14050048
- Wildlife



TRACT 43920 - St. Helena Parish, LOUISIANA

All land, LESS AND EXCEPT land now or formerly constituting the beds and bottoms of any water body of whatever description and nature, all belonging to the State of Louisiana located within the geographical boundaries of the Hutchinson Creek WMA and not presently under mineral lease by the State of Louisiana as of May 14, 2014, the area of which is set forth as follows: 1980 Kentwood, 1981 Greensburg, 1981 Liverpool, and 181 Roseland LA 7.5 feet Quadrangles PARISH (ES): St. Helena Parish STATE ACREAGE: Approximately **164.94 acres**, all as more particularly outlined on a plat on file in the Office of Mineral Resources, Department of Natural Resources. All bearings, distances and coordinates are based on Louisiana Coordinate System of 1927, (North or South Zone).

NOTE: The above description of the Tract nominated for lease has been provided and corrected, where required, exclusively by the nomination party. Any mineral lease selected from this Tract and awarded by the Louisiana State Mineral and Energy Board shall be without warranty of any kind, either express, implied, or statutory, including, but not limited to, the implied warranties of merchantability and fitness for a particular purpose. Should the mineral lease awarded by the Louisiana State Mineral and Energy Board be subsequently modified, cancelled or abrogated due to the existence of conflicting leases, operating agreements, private claims or other future obligations or conditions which may affect all or any portion of the leased Tract, it shall not relieve the Lessee of the obligation to pay any bonus due thereon to the Louisiana State Mineral and Energy Board, nor shall the Louisiana State Mineral and Energy Board be obligated to refund any consideration paid by the Lessor prior to such modification, cancellation, or abrogation, including, but not limited to, bonuses, rentals and royalties.

NOTE: No surface activities will be allowed on this tract.

NOTE: This is an Agency Tract and ordinarily, bonus, rentals and royalty payments are made to the agency. However, due to an agreement between the State and WL&F, all payments are to be made to the Office of Mineral Resources.

NOTE: There will be a minimum bonus of \$150 per acre and a minimum royalty of 25%.

Applicant: PRECISION ENERGY

Bidder	Cash Payment	Price/Acre	Rental	Oil	Gas	Other

Legend



0 2,000 Feet

ST HELENA

T2S - R6E

HUTCHINSON CREEK WMA

TRACT 43921 - Acadia Parish School Board - Acadia Parish, Louisiana

The State Mineral and Energy Board acting on behalf of the Acadia Parish School Board, pursuant to Resolution(s) adopted by that (those) body(ies) and in accordance with Louisiana Revised Statutes 30:121-136 and 151-156, as amended, and Article XIV, Section 16(A)(9) and (B) of the Louisiana Constitution of 1974, as same may be continued and promulgated in proper statutory form and, further, amended from time to time, advertises the lands not under mineral lease on May 14, 2014, excluding the beds and bottoms of all navigable water bodies located within the following: All or a portion of Section 16, Township 07 South, Range 01 West in Acadia Parish, Louisiana, **LESS AND EXCEPT** that portion of the State Lease No. 21350, being more fully describe as: Beginning at a point having Coordinates of X = 1,639,062.00 and Y = 646,783.00; thence East 1,507.00 feet to a point having Coordinates of X = 1,640,569.00 and Y = 646,783.00; thence South 1,126.00 feet to a point having Coordinates of X = 1,640,569.00 and Y = 645,657.00; thence West 795.00 feet to a point having Coordinates of X = 1,639,774.00 and Y = 645,657.00; thence South approximately 251 feet to a point on the South line of Section 16, Township 7 South - Range 1 West; thence Westerly along the South line of said Section 16 to the point of intersection with a North - South line having a Coordinate of X = 1,639,062.00; thence North approximately 1,365 feet to the Point of Beginning, that may lie within the above described tract, containing approximately **538 acres**, all as more particularly outlined on a plat on file in the Office of Mineral Resources, Department of Natural Resources. All bearings, distances and coordinates are based on Louisiana Coordinate System of 1927, (North or South Zone).

NOTE: The above description of the Tract nominated for lease has been provided and corrected, where required, exclusively by the nomination party. Any mineral lease selected from this Tract and awarded by the Louisiana State Mineral and Energy Board shall be without warranty of any kind, either express, implied, or statutory, including, but not limited to, the implied warranties of merchantability and fitness for a particular purpose. Should the mineral lease awarded by the Louisiana State Mineral and Energy Board be subsequently modified, cancelled or abrogated due to the existence of conflicting leases, operating agreements, private claims or other future obligations or conditions which may affect all or any portion of the leased Tract, it shall not relieve the Lessee of the obligation to pay any bonus due thereon to the Louisiana State Mineral and Energy Board, nor shall the Louisiana State Mineral and Energy Board be obligated to refund any consideration paid by the Lessor prior to such modification, cancellation, or abrogation, including, but not limited to, bonuses, rentals and royalties.

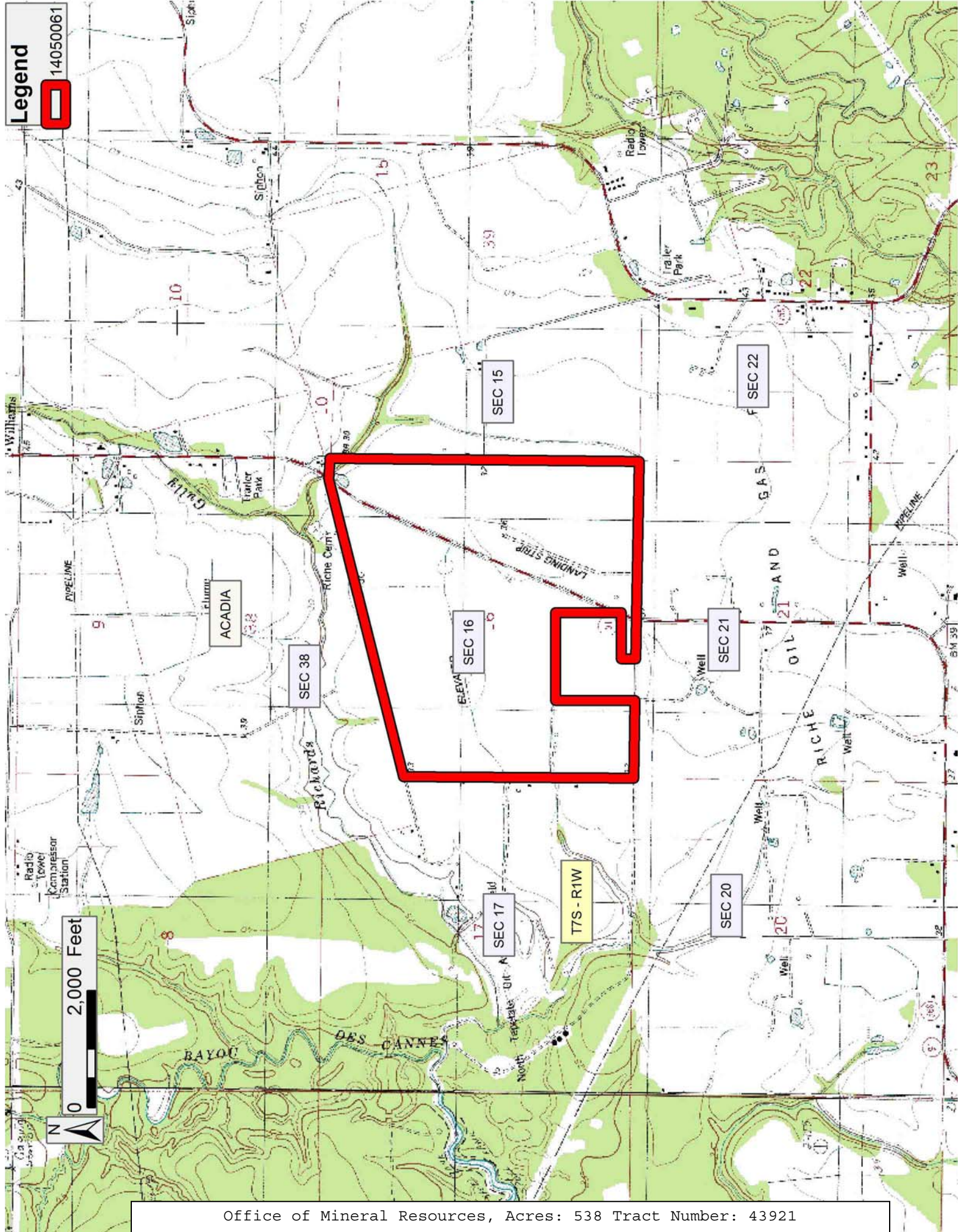
NOTE: The Acadia Parish School Board will require a minimum cash payment of \$300 per acre and a minimum royalty of 25% on all production.

Applicant: PRIDE OIL & GAS PROPERTIES, INC. to Agency and by Resolution from the Acadia Parish School Board authorizing the Mineral Board to act in its behalf

Bidder	Cash Payment	Price/Acre	Rental	Oil	Gas	Other

Legend

14050061



2,000 Feet

