

TRACT 43922 - Red River Parish, LOUISIANA

All land, LESS AND EXCEPT land now or formerly constituting the beds and bottoms of any water body of whatever description and nature, all belonging to the State of Louisiana located within the geographical boundaries of the Bayou Pierre Wildlife Management Area and not presently under mineral lease by the State of Louisiana as of May 14, 2014, the area of which is set forth as follows: The portions of Patent 12605 located in Section 14, including lands in the E/2 of SE/4; and the portions of Patent No. 12614 including lands in the W/2 of SE/4; and the SE/4 of SW/4 located in Section 14, Township 14 North, Range 12 West, all lying north and/or east of Bayou Pierre, in the Parish of Red River, Louisiana. Further being described as Tract 1F on Unit Survey Plat for the HA RA SUBB, prepared by John R. Bowman & Associates, Inc., revised June 3, 2013, containing **148.253 acres**, all as more particularly outlined on a plat on file in the Office of Mineral Resources, Department of Natural Resources. All bearings, distances and coordinates are based on Louisiana Coordinate System of 1927, (North or South Zone).

NOTE: The above description of the Tract nominated for lease has been provided and corrected, where required, exclusively by the nomination party. Any mineral lease selected from this Tract and awarded by the Louisiana State Mineral and Energy Board shall be without warranty of any kind, either express, implied, or statutory, including, but not limited to, the implied warranties of merchantability and fitness for a particular purpose. Should the mineral lease awarded by the Louisiana State Mineral and Energy Board be subsequently modified, cancelled or abrogated due to the existence of conflicting leases, operating agreements, private claims or other future obligations or conditions which may affect all or any portion of the leased Tract, it shall not relieve the Lessee of the obligation to pay any bonus due thereon to the Louisiana State Mineral and Energy Board, nor shall the Louisiana State Mineral and Energy Board be obligated to refund any consideration paid by the Lessor prior to such modification, cancellation, or abrogation, including, but not limited to, bonuses, rentals and royalties.

NOTE: NO PORTION BIDS WILL BE ACCEPTED.

NOTE: The lease shall be depth limited to all sands below the base of the Cotton Valley Formation, Reservoir A, in the Thorn Lake Field, initially defined in Office of Conservation Order No. 1145 effective July 31, 1981, and re-defined by the 1145-A Series of Orders.

NOTE: The proposed tract participates in production from currently one unit well, the HA RA SUBB; Bethard Corp 14H No. 1 (SN 242569) that initially tested July 1, 2011, at a rate of 8,433 MCFD. Since the unit was completed in July, 2011, the HA RA SUBB unit cumulative production through December, 2013 is 5,643,965 MCF, according to the Louisiana Office of Conservation production records.

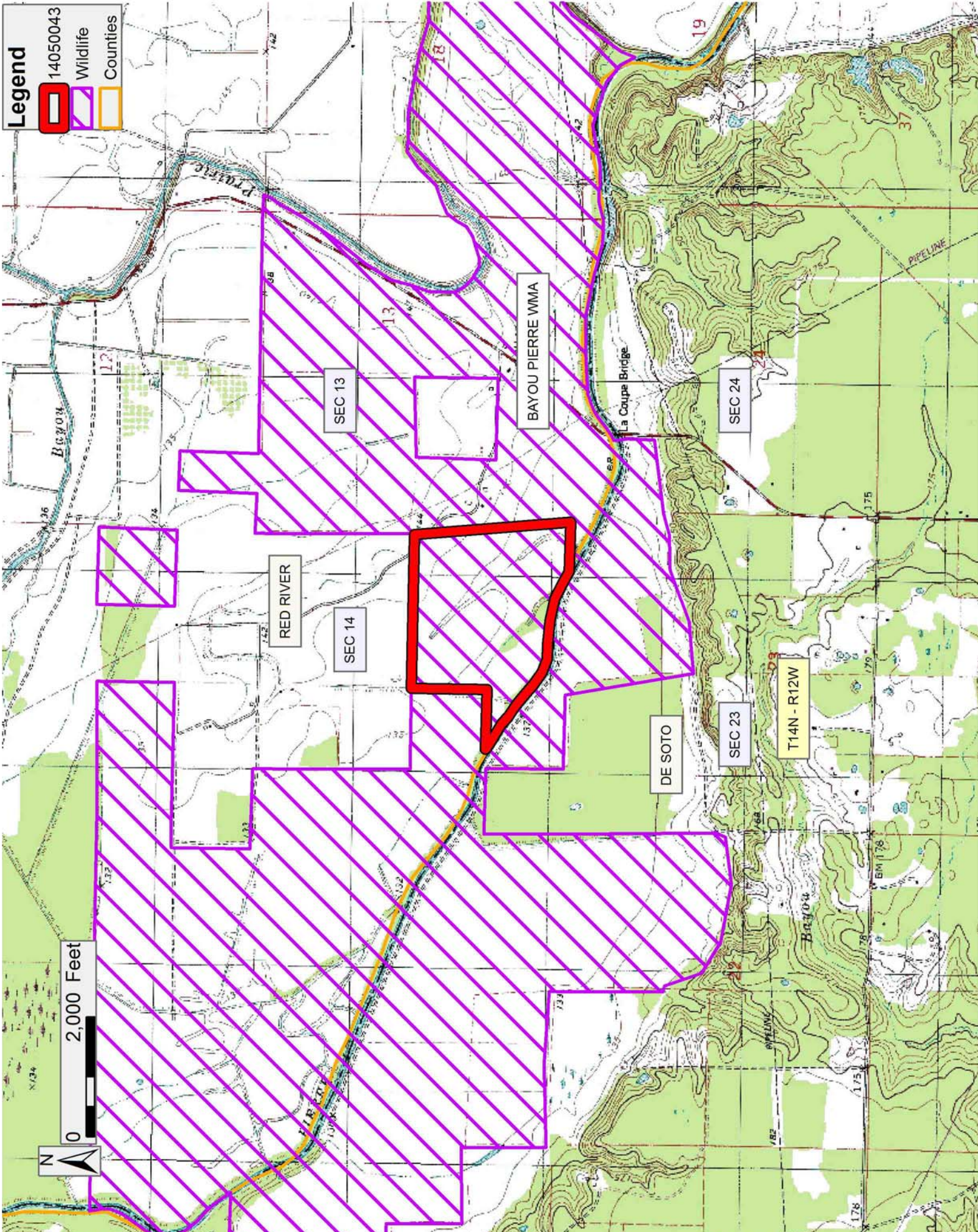
NOTE: The primary term of this lease on property which is subject to the aforesaid litigation shall be three years following a final, non-appealable judgment in the aforesaid litigation, until a mutually agreeable compromise among the litigating parties is conected, or a period of ten years from the date this lease is awarded has elapsed, whichever comes first.

Applicant: STAFF OFFICE OF MINERAL RESOURCES

Bidder	Cash Payment	Price/Acre	Rental	Oil	Gas	Other

Legend

- 14050043
- Wildlife
- Counties



TRACT 43923 - Red River Parish, LOUISIANA

All land, LESS AND EXCEPT land now or formerly constituting the beds and bottoms of any water body of whatever description and nature, all belonging to the State of Louisiana located within the geographical boundaries of the Bayou Pierre Wildlife Management Area and not presently under mineral lease by the State of Louisiana as of May 14, 2014, the area of which is set forth as follows: The W/2 of SW/4 of Section 13, Township 14 North, Range 12 West, Red River Parish, Louisiana, being a portion of the property described in Patent No. 12,605, and also designated as Tract 1B of Unit Survey for the HA RA SUCC, prepared by John R. Bowman & Associates, Inc., revised June 3, 2013, containing **79.822 acres**, all as more particularly outlined on a plat on file in the Office of Mineral Resources, Department of Natural Resources. All bearings, distances and coordinates are based on Louisiana Coordinate System of 1927, (North or South Zone).

NOTE: The above description of the Tract nominated for lease has been provided and corrected, where required, exclusively by the nomination party. Any mineral lease selected from this Tract and awarded by the Louisiana State Mineral and Energy Board shall be without warranty of any kind, either express, implied, or statutory, including, but not limited to, the implied warranties of merchantability and fitness for a particular purpose. Should the mineral lease awarded by the Louisiana State Mineral and Energy Board be subsequently modified, cancelled or abrogated due to the existence of conflicting leases, operating agreements, private claims or other future obligations or conditions which may affect all or any portion of the leased Tract, it shall not relieve the Lessee of the obligation to pay any bonus due thereon to the Louisiana State Mineral and Energy Board, nor shall the Louisiana State Mineral and Energy Board be obligated to refund any consideration paid by the Lessor prior to such modification, cancellation, or abrogation, including, but not limited to, bonuses, rentals and royalties.

NOTE: NO PORTION BIDS WILL BE ACCEPTED

NOTE: The lease shall be depth limited to all sands below the base of the Cotton Valley Formation, Reservoir A, in the Thorn Lake Field, initially defined in Office of Conservation Order No. 1145 effective July 31, 1981, and re-defined by the 1145-A Series of Orders.

NOTE: The proposed tract participates in production from currently one unit well, the HA RA SUCC; Bethard Corp 13H No. 1 (SN 242568) that initially tested July 1, 2011, at a rate of 8,493 MCFD. Since the unit was completed in 2011, the HA RA SUCC unit cumulative production through December, 2013 is 5,387,782 MCF, according to the Louisiana Office of Conservation production records.

NOTE: The primary term of this lease on property which is subject to the aforesaid litigation shall be three years following a final, non-

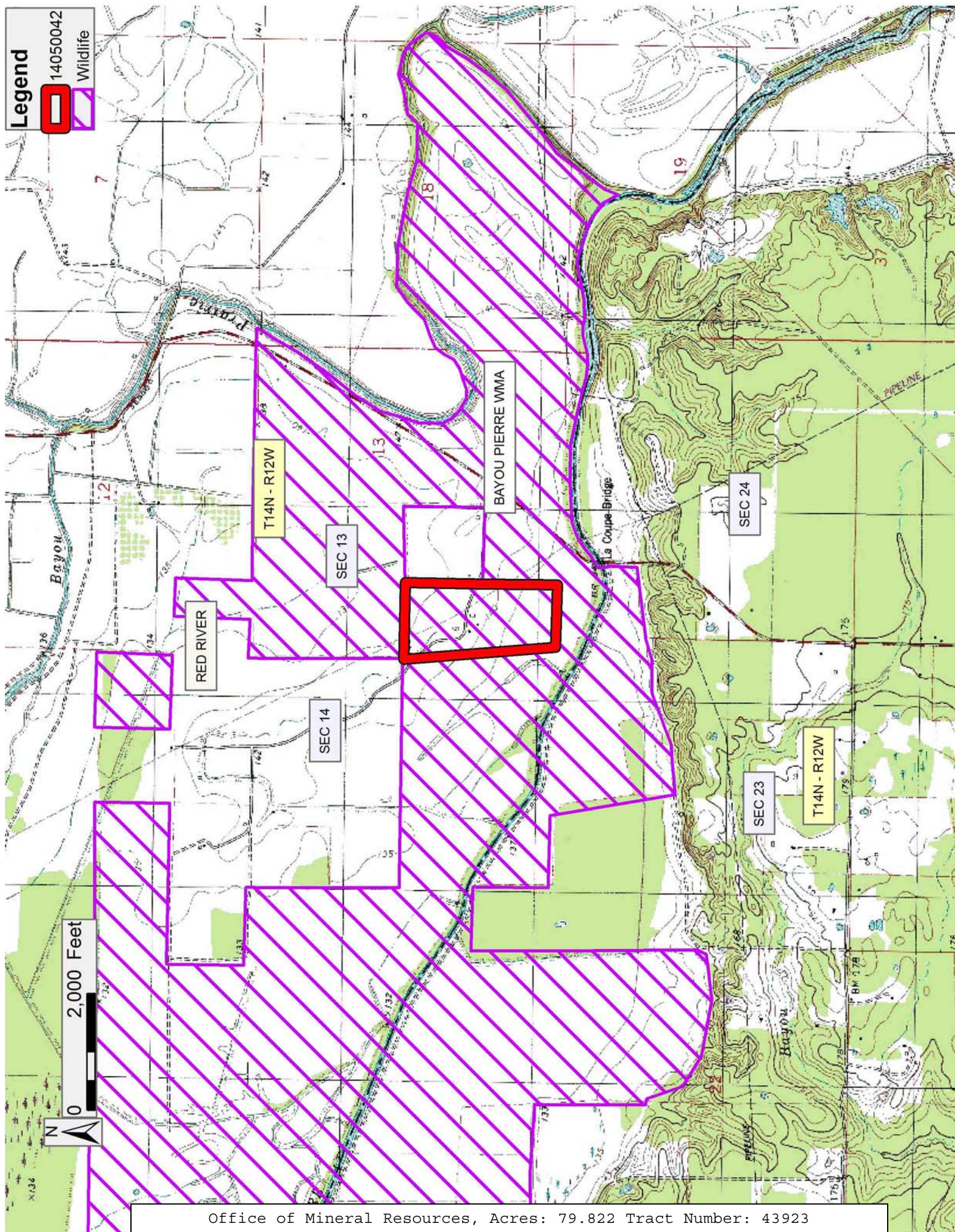
appealable judgment in the aforesaid litigation, until a mutually agreeable compromise among the litigating parties is conected, or a period of ten years from the date this lease is awarded has elapsed, whichever comes first.

Applicant: STAFF OFFICE OF MINERAL RESOURCES

Bidder	Cash Payment	Price/Acre	Rental	Oil	Gas	Other

Legend

14050042
Wildlife



TRACT 43924 - Red River Parish, LOUISIANA

All land, LESS AND EXCEPT land now or formerly constituting the beds and bottoms of any water body of whatever description and nature, all belonging to the State of Louisiana located within the geographical boundaries of the Bayou Pierre Wildlife Management Area and not presently under mineral lease by the State of Louisiana as of May 14, 2014, the area of which is set forth as follows: The portion of Patent 13132 in the fractional NE/4 of NE/4, North and/or East of Bayou Pierre in Section 23, Township 14 North, Range 12 West, Red River Parish, Louisiana, being further described as Tract 1 in the Chesapeake Operating, Inc., Survey plat for the HA RD SUBB, Order Number 109-X-65, by C.H. Fenstermaker & Associates, containing **2.297 acres**, all as more particularly outlined on a plat on file in the Office of Mineral Resources, Department of Natural Resources. All bearings, distances and coordinates are based on Louisiana Coordinate System of 1927, (North or South Zone).

NOTE: The above description of the Tract nominated for lease has been provided and corrected, where required, exclusively by the nomination party. Any mineral lease selected from this Tract and awarded by the Louisiana State Mineral and Energy Board shall be without warranty of any kind, either express, implied, or statutory, including, but not limited to, the implied warranties of merchantability and fitness for a particular purpose. Should the mineral lease awarded by the Louisiana State Mineral and Energy Board be subsequently modified, cancelled or abrogated due to the existence of conflicting leases, operating agreements, private claims or other future obligations or conditions which may affect all or any portion of the leased Tract, it shall not relieve the Lessee of the obligation to pay any bonus due thereon to the Louisiana State Mineral and Energy Board, nor shall the Louisiana State Mineral and Energy Board be obligated to refund any consideration paid by the Lessor prior to such modification, cancellation, or abrogation, including, but not limited to, bonuses, rentals and royalties.

NOTE: NO PORTION BIDS WILL BE ACCEPTED.

NOTE: The proposed tract participates in production from currently one unit well, the HA RD SUBB; Guion 23-14-12H No. 1 (SN 241517) that initially tested February 22, 2011 at a rate of 17,188 MCFD. Since the unit was completed in 2011, the HA RD SUBB unit cumulative production through December, 2013 is 5,707,803 MCF, according to the Louisiana Office of Conservation production records.

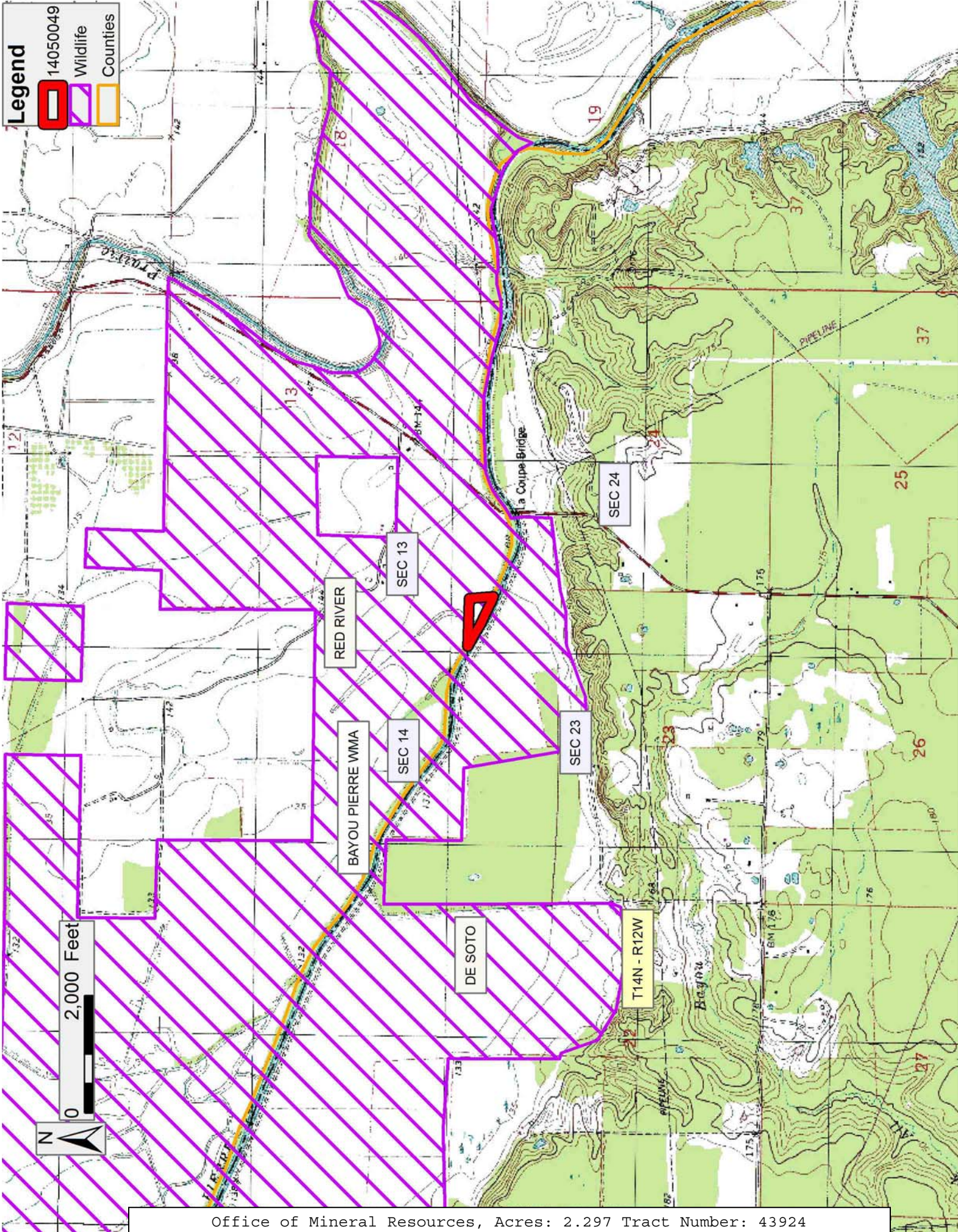
NOTE: The primary term of this lease on property which is subject to the aforesaid litigation shall be three years following a final, non-appealable judgment in the aforesaid litigation, until a mutually agreeable compromise among the litigating parties is effected, or a period of ten years from the date this lease is awarded has elapsed, whichever comes first.

Applicant: STAFF OFFICE OF MINERAL RESOURCES

Bidder	Cash Payment	Price/Acre	Rental	Oil	Gas	Other

Legend

- 14050049
- Wildlife
- Counties



TRACT 43925 - Red River Parish, LOUISIANA

All land, LESS AND EXCEPT land now or formerly constituting the beds and bottoms of any water body of whatever description and nature, all belonging to the State of Louisiana located within the geographical boundaries of the Bayou Pierre Wildlife Management Area and not presently under mineral lease by the State of Louisiana as of May 14, 2014, the area of which is set forth as follows: The portion of Patent 13132 in the N/2 of NW/4 of Section 24, Township 14 North, Range 12 West, situated inside the Bayou Pierre WMA and lying North and/or East of Bayou Pierre, Red River Parish, Louisiana, being further described as Tract 1 in the Chesapeake Operating, Inc., Survey Plat for the HA RD SUV, Order Number 109-X-46, by C.H. Fenstermaker & Associates, containing **30.118 acres**, all as more particularly outlined on a plat on file in the Office of Mineral Resources, Department of Natural Resources. All bearings, distances and coordinates are based on Louisiana Coordinate System of 1927, (North or South Zone).

NOTE: The above description of the Tract nominated for lease has been provided and corrected, where required, exclusively by the nomination party. Any mineral lease selected from this Tract and awarded by the Louisiana State Mineral and Energy Board shall be without warranty of any kind, either express, implied, or statutory, including, but not limited to, the implied warranties of merchantability and fitness for a particular purpose. Should the mineral lease awarded by the Louisiana State Mineral and Energy Board be subsequently modified, cancelled or abrogated due to the existence of conflicting leases, operating agreements, private claims or other future obligations or conditions which may affect all or any portion of the leased Tract, it shall not relieve the Lessee of the obligation to pay any bonus due thereon to the Louisiana State Mineral and Energy Board, nor shall the Louisiana State Mineral and Energy Board be obligated to refund any consideration paid by the Lessor prior to such modification, cancellation, or abrogation, including, but not limited to, bonuses, rentals and royalties.

NOTE: NO PORTION BIDS WILL BE ACCEPTED.

NOTE: The proposed tract participates in production from currently one unit well, the HA RD SUV; Gamble 24-14-12H No. 1 (SN 239826) that initially tested February 17, 2010 at a rate of 11,832 MCFD. Since the unit was completed in 2010, the HA RD SUV unit cumulative production through December, 2013 is 5,498,149 MCF, according to the Louisiana Office of Conservation production records.

NOTE: The primary term of this lease on property which is subject to the aforesaid litigation shall be three years following a final, non-appealable judgment in the aforesaid litigation, until a mutually agreeable compromise among the litigating parties is effected, or a period of ten years from the date this lease is awarded has elapsed, whichever comes first.

Applicant: STAFF OFFICE OF MINERAL RESOURCES

Bidder	Cash Payment	Price/Acre	Rental	Oil	Gas	Other

Legend

- 14050050
- Wildlife
- Counties

