

TRACT 43929 - Concordia Parish, Louisiana

All of the lands now or formerly constituting the beds and bottoms of all water bodies of every nature and description as to which title is vested in the State of Louisiana, together with all islands arising therein and other lands formed by accretion or by reliction, where allowed by law, excepting tax adjudicated lands, and not presently under mineral lease on June 11, 2014, situated in Concordia Parish, Louisiana, and more particularly described as follows: Beginning at a point having Coordinates of X = 2,337,995.83 and Y = 367,281.62; thence East 6,000.00 feet to a point having Coordinates of X = 2,343,995.83 and Y = 367,281.62; thence South 9,000.00 feet to a point having Coordinates of X = 2,343,995.83 and Y = 358,281.62; thence West 6,000.00 feet to a point having Coordinates of X = 2,337,995.83 and Y = 358,281.62; thence North 9,000.00 feet to the point of beginning, **LESS AND EXCEPT** any right, title, and interest in lands owned by and not under lease from the State of Louisiana, on behalf of the Concordia Parish School Board, situated in Section 16, Township 8 North, Range 10 East, Concordia Parish, Louisiana, contained within the above described tract, and **LESS AND EXCEPT** any of the above described within the State of Mississippi, containing approximately **310 acres**, all as more particularly outlined on a plat on file in the Office of Mineral Resources, Department of Natural Resources. All bearings, distances and coordinates are based on Louisiana Coordinate System of 1927, (North or South Zone), where applicable.

NOTE: The above description of the Tract nominated for lease has been provided and corrected, where required, exclusively by the nomination party. Any mineral lease selected from this Tract and awarded by the Louisiana State Mineral and Energy Board shall be without warranty of any kind, either express, implied, or statutory, including, but not limited to, the implied warranties of merchantability and fitness for a particular purpose. Should the mineral lease awarded by the Louisiana State Mineral and Energy Board be subsequently modified, cancelled or abrogated due to the existence of conflicting leases, operating agreements, private claims or other future obligations or conditions which may affect all or any portion of the leased Tract, it shall not relieve the Lessee of the obligation to pay any bonus due thereon to the Louisiana State Mineral and Energy Board, nor shall the Louisiana State Mineral and Energy Board be obligated to refund any consideration paid by the Lessor prior to such modification, cancellation, or abrogation, including, but not limited to, bonuses, rentals and royalties.

Applicant: CYPRESS ENERGY CORPORATION

Bidder	Cash Payment	Price/Acre	Rental	Oil	Gas	Other



Legend



14060042

MISSISSIPPI RIVER

CONCORDIA

P.O.B.

T8N - R10E

0 3,000 Feet



TRACT 43930 - Concordia Parish, Louisiana

All of the lands now or formerly constituting the beds and bottoms of all water bodies of every nature and description as to which title is vested in the State of Louisiana, together with all islands arising therein and other lands formed by accretion or by reliction, where allowed by law, excepting tax adjudicated lands, and not presently under mineral lease on June 11, 2014, situated in Concordia Parish, Louisiana, and more particularly described as follows: Beginning at a point having Coordinates of X = 2,337,995.83 and Y = 358,281.62; thence East 6,000.00 feet to a point having Coordinates of X = 2,343,995.83 and Y = 358,281.62; thence South 9,000.00 feet to a point having Coordinates of X = 2,343,995.83 and Y = 349,281.62; thence West 6,000.00 feet to a point having Coordinates of X = 2,337,995.83 and Y = 349,281.62; thence North 9,000.00 feet to the point of beginning, **LESS AND EXCEPT** any right, title, and interest in lands owned by and not under lease from the State of Louisiana, on behalf of the Concordia Parish School Board, situated in Section 16, Township 8 North, Range 10 East, Concordia Parish, Louisiana, contained within the above described tract, and **LESS AND EXCEPT** any of the above described within the State of Mississippi, containing approximately **403 acres**, all as more particularly outlined on a plat on file in the Office of Mineral Resources, Department of Natural Resources. All bearings, distances and coordinates are based on Louisiana Coordinate System of 1927, (North or South Zone), where applicable.

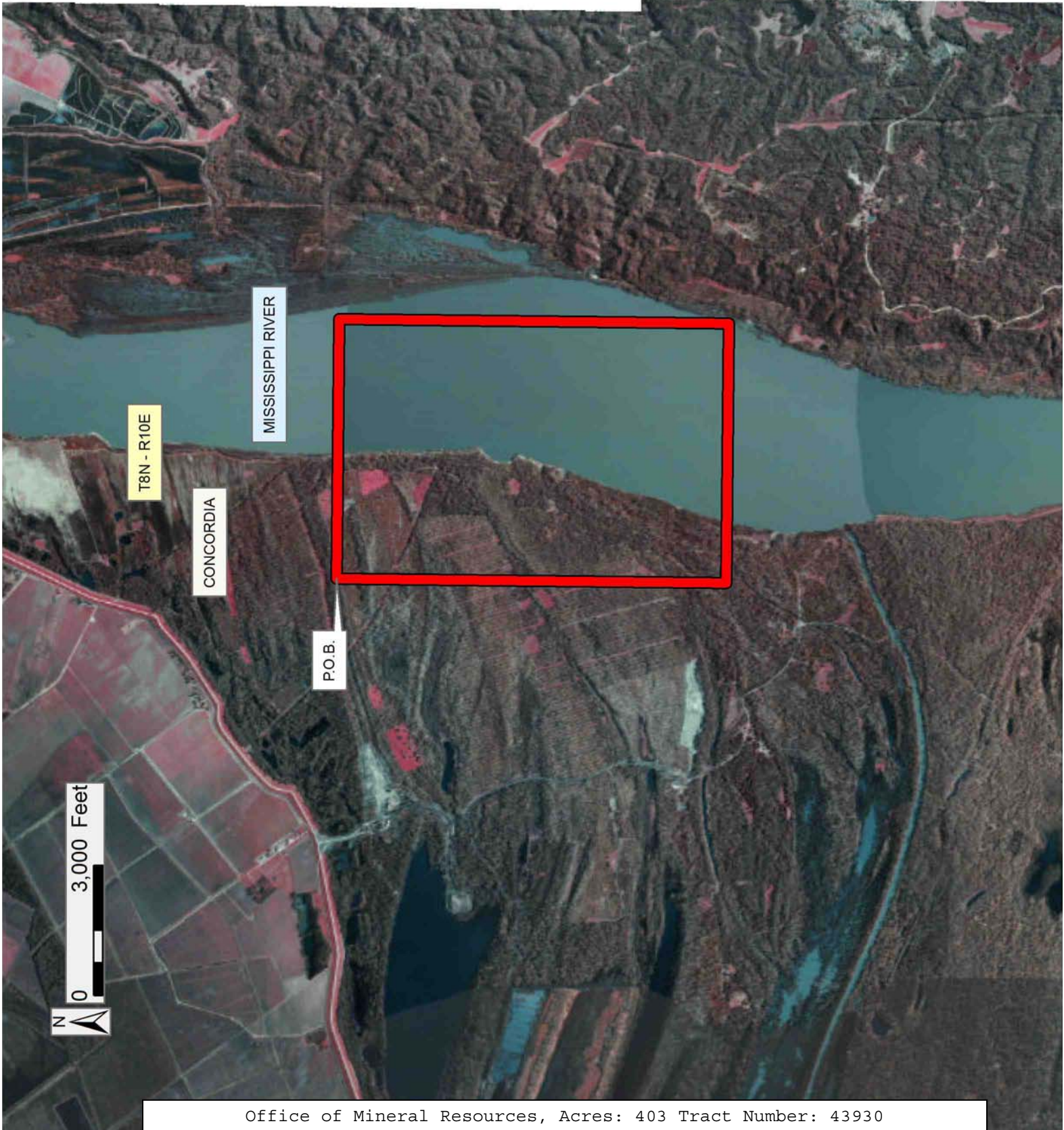
NOTE: The above description of the Tract nominated for lease has been provided and corrected, where required, exclusively by the nomination party. Any mineral lease selected from this Tract and awarded by the Louisiana State Mineral and Energy Board shall be without warranty of any kind, either express, implied, or statutory, including, but not limited to, the implied warranties of merchantability and fitness for a particular purpose. Should the mineral lease awarded by the Louisiana State Mineral and Energy Board be subsequently modified, cancelled or abrogated due to the existence of conflicting leases, operating agreements, private claims or other future obligations or conditions which may affect all or any portion of the leased Tract, it shall not relieve the Lessee of the obligation to pay any bonus due thereon to the Louisiana State Mineral and Energy Board, nor shall the Louisiana State Mineral and Energy Board be obligated to refund any consideration paid by the Lessor prior to such modification, cancellation, or abrogation, including, but not limited to, bonuses, rentals and royalties.

Applicant: CYPRESS ENERGY CORPORATION

Bidder	Cash Payment	Price/Acre	Rental	Oil	Gas	Other

Legend

14060043



TRACT 43931 - Concordia Parish, Louisiana

All of the lands now or formerly constituting the beds and bottoms of all water bodies of every nature and description as to which title is vested in the State of Louisiana, together with all islands arising therein and other lands formed by accretion or by reliction, where allowed by law, excepting tax adjudicated lands, and not presently under mineral lease on June 11, 2014, situated in Concordia Parish, Louisiana, and more particularly described as follows: Beginning at a point having Coordinates of X = 2,238,421.40 and Y = 300,931.64; thence North 00 degrees 24 minutes 40 seconds West 3,960.00 feet to a point having Coordinates of X = 2,238,392.98 and Y = 304,891.54; thence North 89 degrees 39 minutes 22 seconds East 3,960.00 feet to a point having Coordinates of X = 2,242,352.91 and Y = 304,915.30; thence South 00 degrees 24 minutes 39 seconds East 3,959.90 feet to a point having Coordinates of X = 2,242,381.30 and Y = 300,955.50; thence South 89 degrees 39 minutes 17 seconds West for 3,959.97 feet to the point of beginning, containing **216 acres**, all as more particularly outlined on a plat on file in the Office of Mineral Resources, Department of Natural Resources. All bearings, distances and coordinates are based on Louisiana Coordinate System of 1927, (North or South Zone), where applicable.

NOTE: The above description of the Tract nominated for lease has been provided and corrected, where required, exclusively by the nomination party. Any mineral lease selected from this Tract and awarded by the Louisiana State Mineral and Energy Board shall be without warranty of any kind, either express, implied, or statutory, including, but not limited to, the implied warranties of merchantability and fitness for a particular purpose. Should the mineral lease awarded by the Louisiana State Mineral and Energy Board be subsequently modified, cancelled or abrogated due to the existence of conflicting leases, operating agreements, private claims or other future obligations or conditions which may affect all or any portion of the leased Tract, it shall not relieve the Lessee of the obligation to pay any bonus due thereon to the Louisiana State Mineral and Energy Board, nor shall the Louisiana State Mineral and Energy Board be obligated to refund any consideration paid by the Lessor prior to such modification, cancellation, or abrogation, including, but not limited to, bonuses, rentals and royalties.

Bidder	Cash Payment	Price/Acre	Rental	Oil	Gas	Other

Applicant: BAY GAS, LLC

Legend

14060038



COCODRIE LAKE

CONCORDIA

P.O.B.

T6N - R7E



TRACT 43932 - Pointe Coupee and St. Landry Parishes, Louisiana

All of the lands now or formerly constituting the beds and bottoms of all water bodies of every nature and description as to which title is vested in the State of Louisiana, together with all islands arising therein and other lands formed by accretion or by reliction, where allowed by law, excepting tax adjudicated lands, and not presently under mineral lease on June 11, 2014, situated in Pointe Coupee and St. Landry Parishes, Louisiana, and more particularly described as follows: Beginning at a point having Coordinates of X = 1,865,960.00 and Y = 724,220.00; thence East 8,000.00 feet to a point having Coordinates of X = 1,873,960.00 and Y = 724,220.00; thence South 5,000.00 feet to a point having Coordinates of X = 1,873,960.00 and Y = 719,220.00; thence West 8,000.00 feet to a point having Coordinates of X = 1,865,960.00 and Y = 719,220.00; thence North 5,000.00 feet to the Point of Beginning, containing approximately **197.41 acres**, all as more particularly outlined on a plat on file in the Office of Mineral Resources, Department of Natural Resources. All bearings, distances and coordinates are based on Louisiana Coordinate System of 1927, (North or South Zone), where applicable.

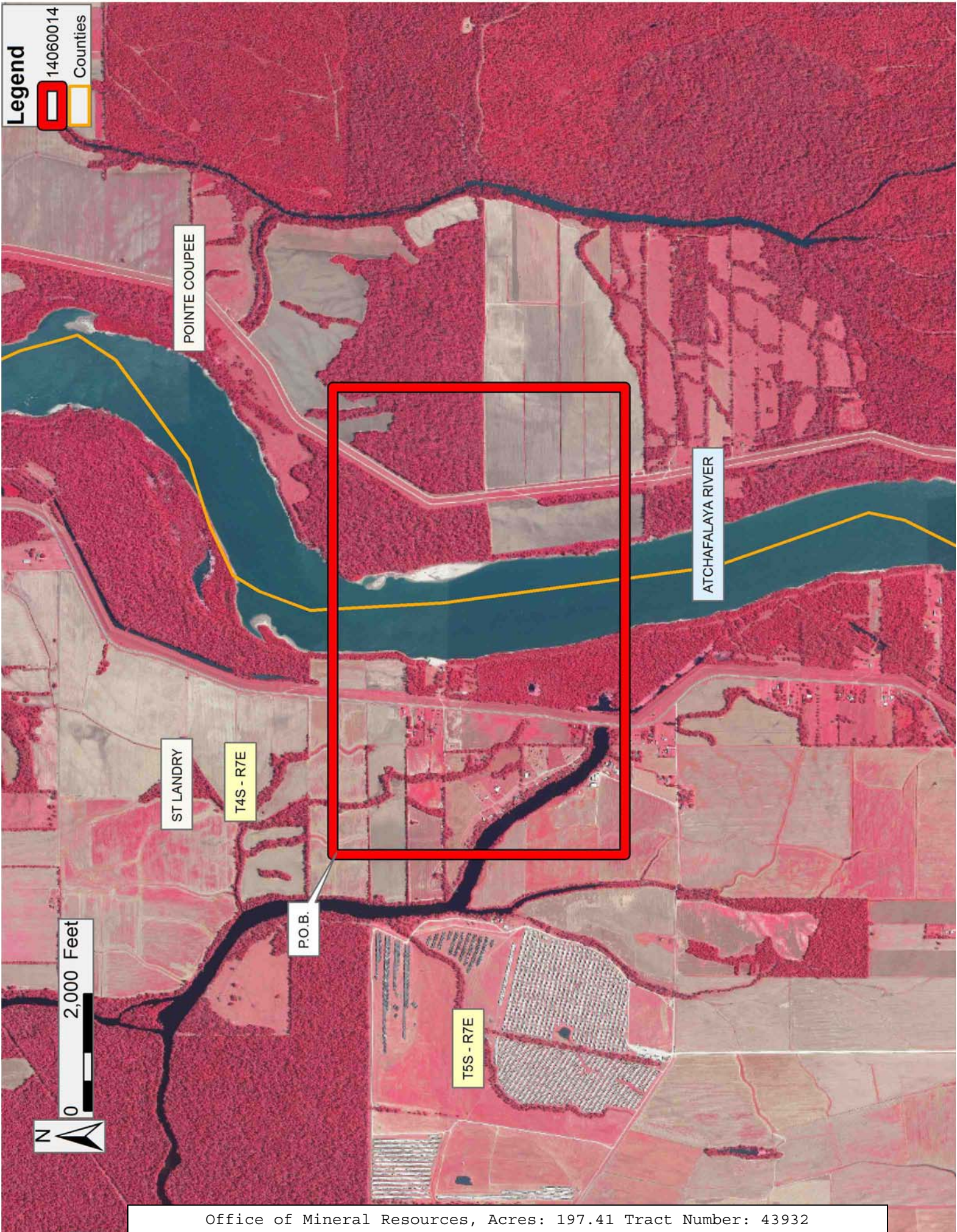
NOTE: The above description of the Tract nominated for lease has been provided and corrected, where required, exclusively by the nomination party. Any mineral lease selected from this Tract and awarded by the Louisiana State Mineral and Energy Board shall be without warranty of any kind, either express, implied, or statutory, including, but not limited to, the implied warranties of merchantability and fitness for a particular purpose. Should the mineral lease awarded by the Louisiana State Mineral and Energy Board be subsequently modified, cancelled or abrogated due to the existence of conflicting leases, operating agreements, private claims or other future obligations or conditions which may affect all or any portion of the leased Tract, it shall not relieve the Lessee of the obligation to pay any bonus due thereon to the Louisiana State Mineral and Energy Board, nor shall the Louisiana State Mineral and Energy Board be obligated to refund any consideration paid by the Lessor prior to such modification, cancellation, or abrogation, including, but not limited to, bonuses, rentals and royalties.

Applicant: SUNCOAST LAND SERVICES, INC.

Bidder	Cash Payment	Price/Acre	Rental	Oil	Gas	Other

Legend

- 14060014
- Counties



TRACT 43933 - Pointe Coupee and St. Landry Parishes, Louisiana

All of the lands now or formerly constituting the beds and bottoms of all water bodies of every nature and description as to which title is vested in the State of Louisiana, together with all islands arising therein and other lands formed by accretion or by reliction, where allowed by law, excepting tax adjudicated lands, and not presently under mineral lease on June 11, 2014, situated in Pointe Coupee and St. Landry Parishes, Louisiana, and more particularly described as follows: Beginning at a point having Coordinates of X = 1,866,960.00 and Y = 719,220.00; thence East 8,000.00 feet to a point having Coordinates of X = 1,874,960.00 and Y = 719,220.00; thence South 5,000.00 feet to a point having Coordinates of X = 1,874,960.00 and Y = 714,220.00; thence West 8,000.00 feet to a point having Coordinates of X = 1,866,960.00 and Y = 714,220.00; thence North 5,000.00 feet to the Point of Beginning, containing approximately **172.72 acres**, all as more particularly outlined on a plat on file in the Office of Mineral Resources, Department of Natural Resources. All bearings, distances and coordinates are based on Louisiana Coordinate System of 1927, (North or South Zone), where applicable.

NOTE: The above description of the Tract nominated for lease has been provided and corrected, where required, exclusively by the nomination party. Any mineral lease selected from this Tract and awarded by the Louisiana State Mineral and Energy Board shall be without warranty of any kind, either express, implied, or statutory, including, but not limited to, the implied warranties of merchantability and fitness for a particular purpose. Should the mineral lease awarded by the Louisiana State Mineral and Energy Board be subsequently modified, cancelled or abrogated due to the existence of conflicting leases, operating agreements, private claims or other future obligations or conditions which may affect all or any portion of the leased Tract, it shall not relieve the Lessee of the obligation to pay any bonus due thereon to the Louisiana State Mineral and Energy Board, nor shall the Louisiana State Mineral and Energy Board be obligated to refund any consideration paid by the Lessor prior to such modification, cancellation, or abrogation, including, but not limited to, bonuses, rentals and royalties.

Applicant: SUNCOAST LAND SERVICES, INC.

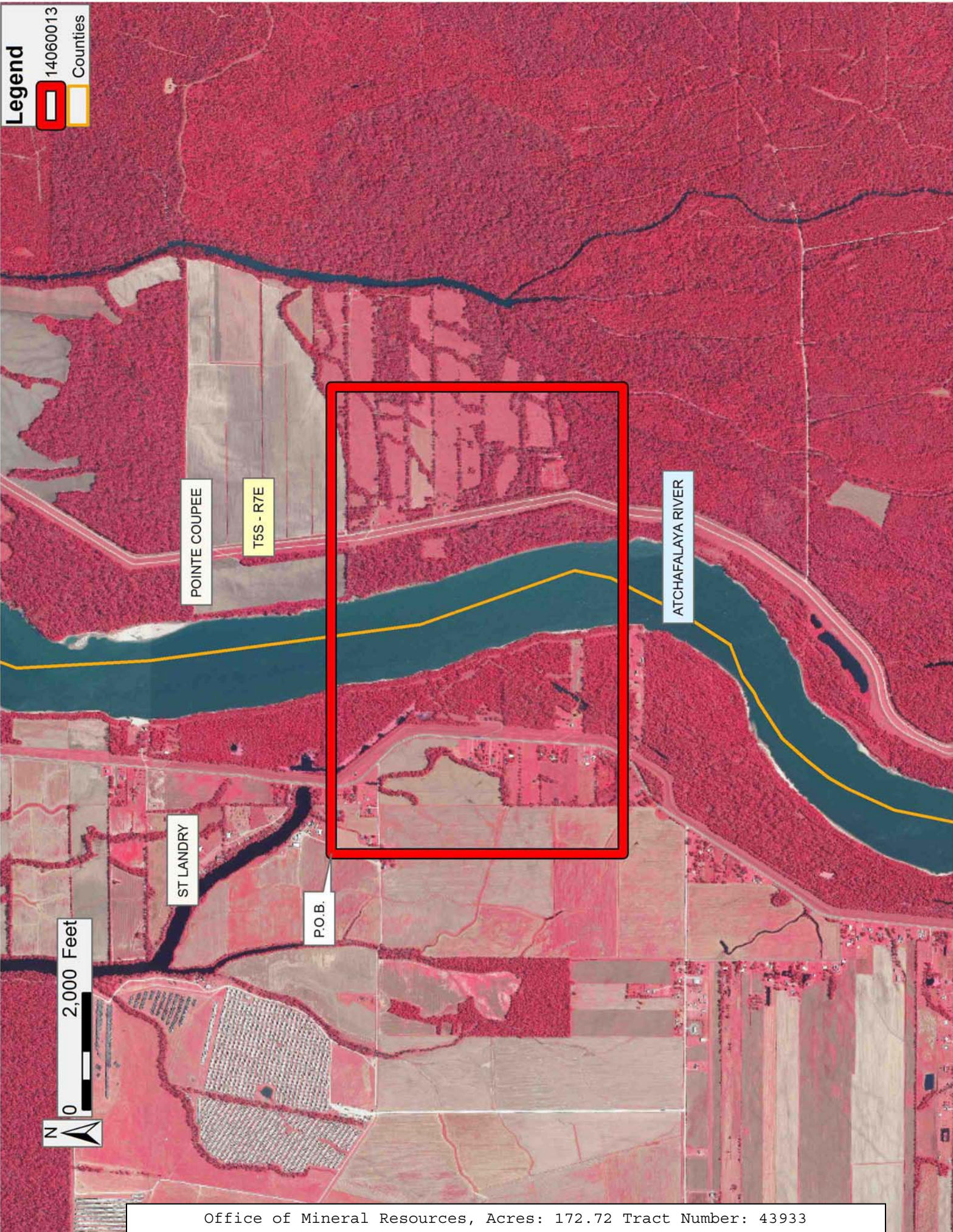
Bidder	Cash Payment	Price/Acre	Rental	Oil	Gas	Other

Legend



14060013

Counties



TRACT 43934 - Pointe Coupee and St. Landry Parishes, Louisiana

All of the lands now or formerly constituting the beds and bottoms of all water bodies of every nature and description as to which title is vested in the State of Louisiana, together with all islands arising therein and other lands formed by accretion or by reliction, where allowed by law, excepting tax adjudicated lands, and not presently under mineral lease on June 11, 2014, situated in Pointe Coupee and St. Landry Parishes, Louisiana, and more particularly described as follows: Beginning at a point having Coordinates of X = 1,865,960.00 and Y = 714,220.00; thence East 8,000.00 feet to a point having Coordinates of X = 1,873,960.00 and Y = 714,220.00; thence South 5,000.00 feet to a point having Coordinates of X = 1,873,960.00 and Y = 709,220.00; thence West 8,000.00 feet to a point having Coordinates of X = 1,865,960.00 and Y = 709,220.00; thence North 5,000.00 feet to the Point of Beginning, **LESS AND EXCEPT** any right, title, and interest in lands owned by and not under lease from the State of Louisiana, on behalf of the Pointe Coupee School Board, situated in Section 16, Township 5 South, Range 7 East, Pointe Coupee Parish, Louisiana, and on behalf of the St. Landry School Board, situated in Section 16, Township 5 South, Range 7 East, St. Landry Parish, Louisiana, contained within the above described tract containing approximately **196.20 acres**, all as more particularly outlined on a plat on file in the Office of Mineral Resources, Department of Natural Resources. All bearings, distances and coordinates are based on Louisiana Coordinate System of 1927, (North or South Zone), where applicable.

NOTE: The above description of the Tract nominated for lease has been provided and corrected, where required, exclusively by the nomination party. Any mineral lease selected from this Tract and awarded by the Louisiana State Mineral and Energy Board shall be without warranty of any kind, either express, implied, or statutory, including, but not limited to, the implied warranties of merchantability and fitness for a particular purpose. Should the mineral lease awarded by the Louisiana State Mineral and Energy Board be subsequently modified, cancelled or abrogated due to the existence of conflicting leases, operating agreements, private claims or other future obligations or conditions which may affect all or any portion of the leased Tract, it shall not relieve the Lessee of the obligation to pay any bonus due thereon to the Louisiana State Mineral and Energy Board, nor shall the Louisiana State Mineral and Energy Board be obligated to refund any consideration paid by the Lessor prior to such modification, cancellation, or abrogation, including, but not limited to, bonuses, rentals and royalties.

Applicant: SUNCOAST LAND SERVICES, INC.

Bidder	Cash Payment	Price/Acre	Rental	Oil	Gas	Other

Legend

14060016



POINTE COUPEE

T5S - R7E

ST LANDRY

ATCHAFALAYA RIVER

P.O.B.

0 2,000 Feet



TRACT 43935 - Pointe Coupee and St. Landry Parishes, Louisiana

All of the lands now or formerly constituting the beds and bottoms of all water bodies of every nature and description as to which title is vested in the State of Louisiana, together with all islands arising therein and other lands formed by accretion or by reliction, where allowed by law, excepting tax adjudicated lands, and not presently under mineral lease on June 11, 2014, situated in Pointe Coupee and St. Landry Parishes, Louisiana, and more particularly described as follows: Beginning at a point having Coordinates of X = 1,864,460.00 and Y = 709,220.00; thence East 6,500.00 feet to a point having Coordinates of X = 1,870,960.00 and Y = 709,220.00; thence South 5,000.00 feet to a point having Coordinates of X = 1,870,960.00 and Y = 704,220.00; thence West 6,500.00 feet to a point having Coordinates of X = 1,864,460.00 and Y = 704,220.00; thence North 5,000.00, feet to the Point of Beginning, **LESS AND EXCEPT** any right, title, and interest in lands owned by and not under lease from the State of Louisiana, on behalf of the *St. Landry Parish School Board, situated in Section 16, Township 5 South, Range 7 East, St. Landry Parish, Louisiana*, contained within the above described tract, containing approximately **156.76 acres**, all as more particularly outlined on a plat on file in the Office of Mineral Resources, Department of Natural Resources. All bearings, distances and coordinates are based on Louisiana Coordinate System of 1927, (North or South Zone), where applicable.

NOTE: The above description of the Tract nominated for lease has been provided and corrected, where required, exclusively by the nomination party. Any mineral lease selected from this Tract and awarded by the Louisiana State Mineral and Energy Board shall be without warranty of any kind, either express, implied, or statutory, including, but not limited to, the implied warranties of merchantability and fitness for a particular purpose. Should the mineral lease awarded by the Louisiana State Mineral and Energy Board be subsequently modified, cancelled or abrogated due to the existence of conflicting leases, operating agreements, private claims or other future obligations or conditions which may affect all or any portion of the leased Tract, it shall not relieve the Lessee of the obligation to pay any bonus due thereon to the Louisiana State Mineral and Energy Board, nor shall the Louisiana State Mineral and Energy Board be obligated to refund any consideration paid by the Lessor prior to such modification, cancellation, or abrogation, including, but not limited to, bonuses, rentals and royalties.

Applicant: SUNCOAST LAND SERVICES, INC.

Bidder	Cash Payment	Price/Acre	Rental	Oil	Gas	Other

Legend



14060015
Counties

POINTE COUPEE

T5S - R7E

ATCHAFALAYA RIVER

ST LANDRY

P.O.B.



TRACT 43936 - Portion of Blocks 1, and 2, Breton Sound Area, and Block 69, Chandeleur Sound Area, St. Bernard Parish, Louisiana

All of the lands now or formerly constituting the beds and bottoms of all water bodies of every nature and description as to which title is vested in the State of Louisiana, together with all islands arising therein and other lands formed by accretion or by reliction, where allowed by law, excepting tax adjudicated lands, and not presently under mineral lease on June 11, 2014, situated in St. Bernard Parish, Louisiana, and more particularly described as follows: Beginning at a point within Block 68, Chandeleur Sound Area, having Coordinates of X = 2,650,523.48 and Y = 381,833.00; thence South 503.00 feet to a point on the common block line between Block 68, Chandeleur Sound Area and Block 2, Breton Sound Area having Coordinates of X = 2,650,523.48 and Y = 381,330.00; thence South 6,674.00 feet to a point having Coordinates of X = 2,650,523.48; and Y = 374,656.00; thence West 423.48 feet to a point on the common block line between said Block 2, Breton Sound Area, and Block 1, Breton Sound Area, having Coordinates of X = 2,650,100.00 and Y = 374,656.00; thence West 14,750.00 feet to a point on the common block line between said Block 1 and Block 4, Main Pass Area, having Coordinates of X = 2,635,350.00; and Y = 374,656.00; thence North 6,674.00 feet along the common block line between said Block 1 and said Block 4; thence North 503.02 feet along the common block line between said Block 70 and Block 69, having Coordinates of X = 2,635,350.00 and Y = 381,833.00; thence East 1,476.00 feet to the south Southwest corner of State Lease No. 16799, having Coordinates of X = 2,636,826.00 and Y = 381,833.00; thence East 8,714.00 feet along the South Line of said State Lease No. 16799 to its Southeast corner, having Coordinates of X = 2,645,540.00 and Y = 381,833.00; thence East 4,560.00 feet to a point on the common block line between said Block 69 and said Block 68, having Coordinates of X = 2,650,100.00 and Y = 381,833.00; thence East 423.48 feet to the Point of Beginning, containing **2,500 acres**, all as more particularly outlined on a plat on file in the Office of Mineral Resources, Department of Natural Resources. All bearings, distances and coordinates are based on Louisiana Coordinate System of 1927, (North or South Zone), where applicable.

NOTE: The above description of the Tract nominated for lease has been provided and corrected, where required, exclusively by the nomination party. Any mineral lease selected from this Tract and awarded by the Louisiana State Mineral and Energy Board shall be without warranty of any kind, either express, implied, or statutory, including, but not limited to, the implied warranties of merchantability and fitness for a particular purpose. Should the mineral lease awarded by the Louisiana State Mineral and Energy Board be subsequently modified, cancelled or abrogated due to the existence of conflicting leases, operating agreements, private claims or other future obligations or conditions which may affect all or any portion of the leased Tract, it shall not relieve the Lessee of the obligation to pay any bonus due thereon to the Louisiana State Mineral and Energy Board, nor shall the Louisiana State Mineral and Energy Board be obligated to refund any consideration paid by the Lessor prior to such

modification, cancellation, or abrogation, including, but not limited to, bonuses, rentals and royalties.




NOTE: The State of Louisiana does hereby reserve, and this lease shall be subject to, the imprescriptible right of surface use in the nature of a servitude in favor of the Department of Natural Resources, including its Offices and Commissions, for the sole purpose of implementing, constructing, servicing and maintaining approved coastal zone management and/or restoration projects. Utilization of any and all rights derived under this lease by the mineral lessee, its agents, successors or assigns, shall not interfere with nor hinder the reasonable surface use by the Department of Natural Resources, its Offices or Commissions, as herein above reserved.

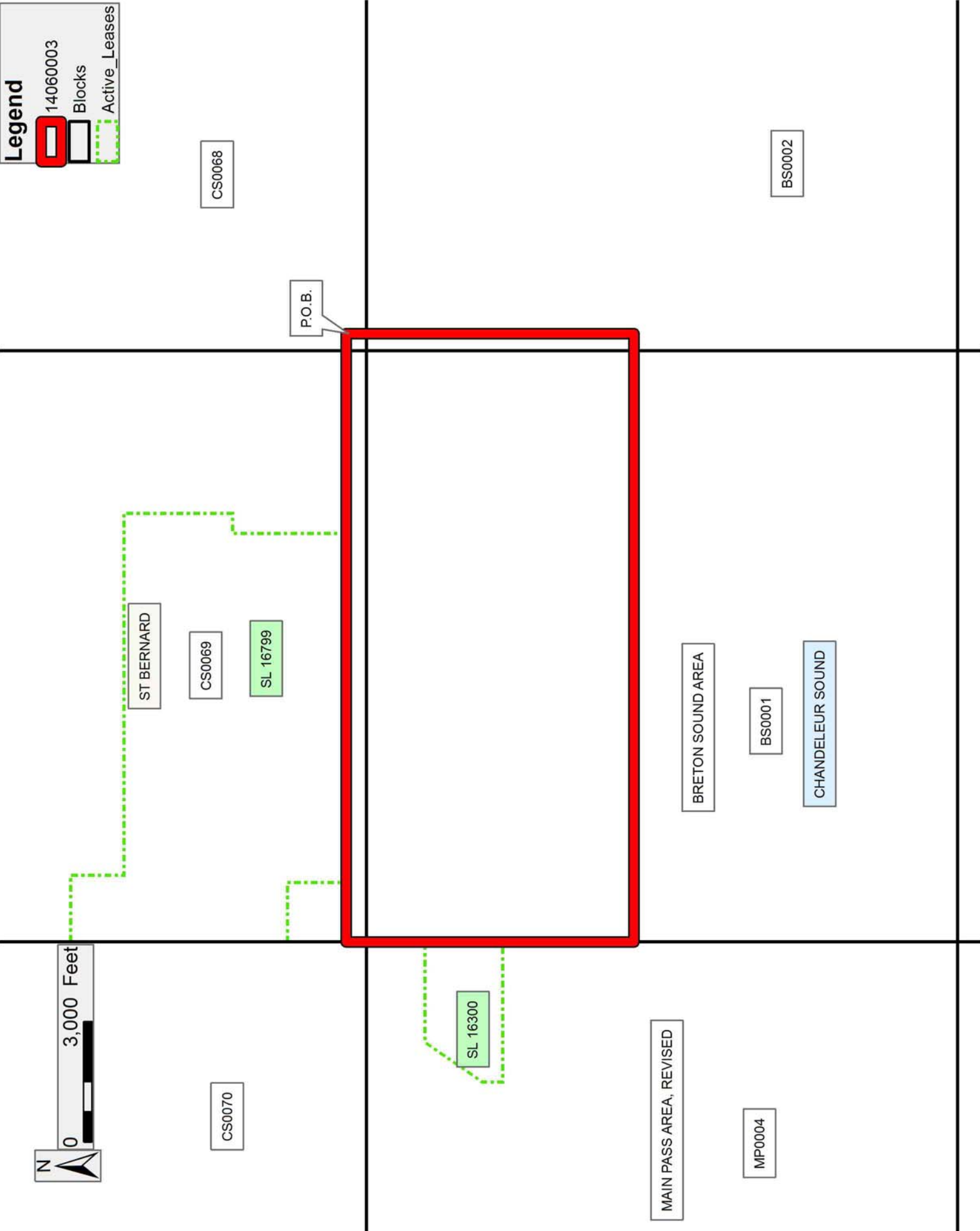
NOTE: This tract is located in an area designated by the Louisiana Legislature or the Wildlife and Fisheries Commission as a Public Oyster Seed Ground, Reservation, or area of Calcasieu or Sabine Lake. Proposed projects occurring in these areas will be evaluated on a case by case basis by Louisiana Department of Wildlife & Fisheries. Modifications to proposed project features including, but not limited to, access routes, well sites, flowlines, and appurtenant structures maybe required by the Louisiana Department of Wildlife and Fisheries. In addition, compensatory mitigation will be required to offset unavoidable habitat impacts.

Applicant: MITCHELL OIL & GAS, LLC

Bidder	Cash Payment	Price/Acre	Rental	Oil	Gas	Other

Legend

-  14060003
-  Blocks
-  Active_Leases



TRACT 43937 - Portion of Block 1, Breton Sound Area, St. Bernard Parish, Louisiana

All of the lands now or formerly constituting the beds and bottoms of all water bodies of every nature and description as to which title is vested in the State of Louisiana, together with all islands arising therein and other lands formed by accretion or by reliction, where allowed by law, excepting tax adjudicated lands, and not presently under mineral lease on June 11, 2014, situated in St. Bernard Parish, Louisiana, and more particularly described as follows: Beginning at a point within Block 1, Breton Sound Area, having Coordinates of X = 2,650,100.00 and Y = 374,656.00; thence South 8,076.00 feet to a point having Coordinates of X = 2,650,100.00 and Y = 366,580.00; thence West 13,484.39 feet to a point having Coordinates of X = 2,636,615.61 and Y = 366,580.00; thence North 8,076.00 feet to a point having Coordinates of X = 2,636,615.61 and Y = 374,656.00; thence East 13,484.39 feet to the Point of Beginning, containing **2,500 acres**, all as more particularly outlined on a plat on file in the Office of Mineral Resources, Department of Natural Resources. All bearings, distances and coordinates are based on Louisiana Coordinate System of 1927, (North or South Zone), where applicable.

NOTE: The above description of the Tract nominated for lease has been provided and corrected, where required, exclusively by the nomination party. Any mineral lease selected from this Tract and awarded by the Louisiana State Mineral and Energy Board shall be without warranty of any kind, either express, implied, or statutory, including, but not limited to, the implied warranties of merchantability and fitness for a particular purpose. Should the mineral lease awarded by the Louisiana State Mineral and Energy Board be subsequently modified, cancelled or abrogated due to the existence of conflicting leases, operating agreements, private claims or other future obligations or conditions which may affect all or any portion of the leased Tract, it shall not relieve the Lessee of the obligation to pay any bonus due thereon to the Louisiana State Mineral and Energy Board, nor shall the Louisiana State Mineral and Energy Board be obligated to refund any consideration paid by the Lessor prior to such modification, cancellation, or abrogation, including, but not limited to, bonuses, rentals and royalties.

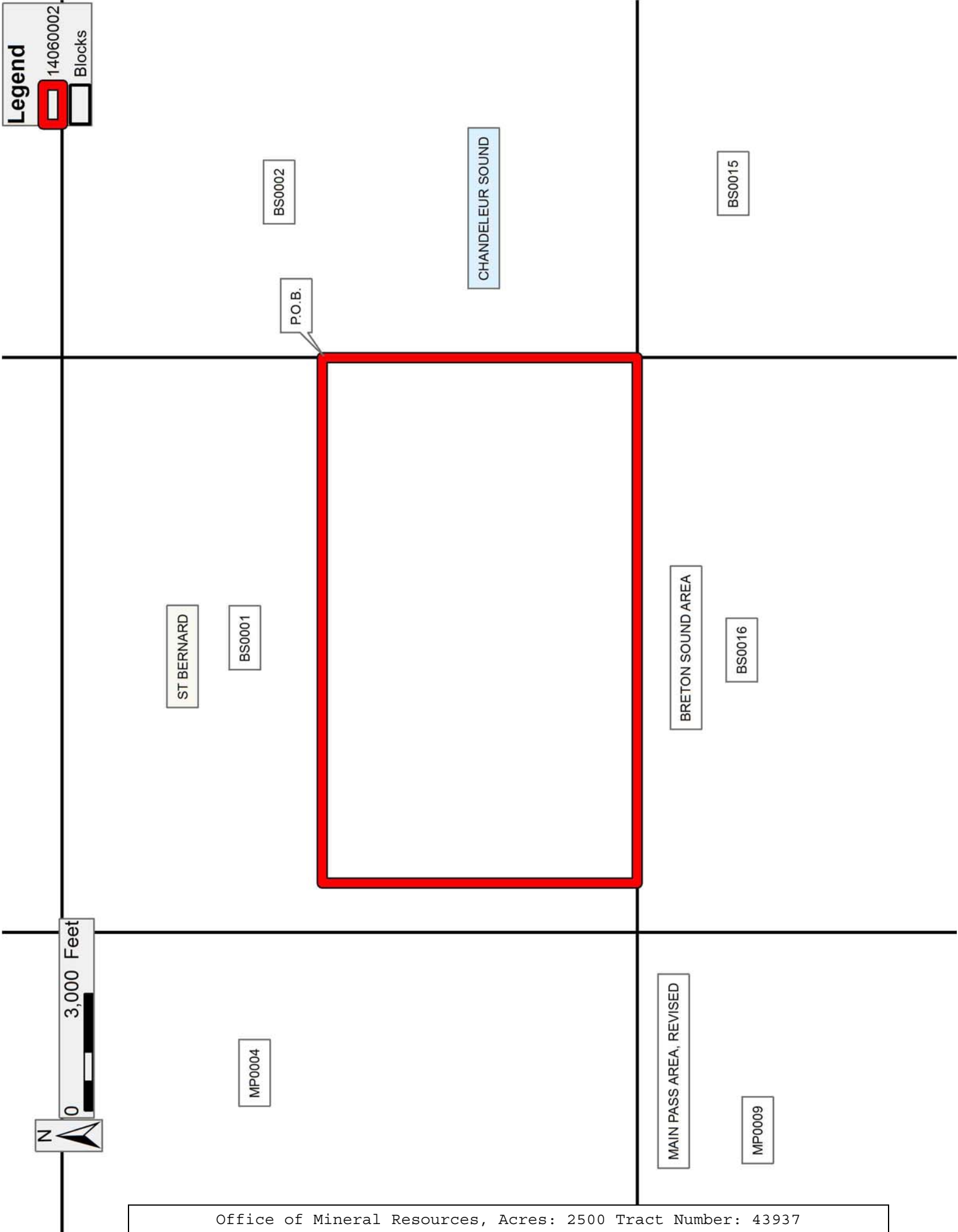
NOTE: The State of Louisiana does hereby reserve, and this lease shall be subject to, the imprescriptible right of surface use in the nature of a servitude in favor of the Department of Natural Resources, including its Offices and Commissions, for the sole purpose of implementing, constructing, servicing and maintaining approved coastal zone management and/or restoration projects. Utilization of any and all rights derived under this lease by the mineral lessee, its agents, successors or assigns, shall not interfere with nor hinder the reasonable surface use by the Department of Natural Resources, its Offices or Commissions, as herein above reserved.

NOTE: This tract is located in an area designated by the Louisiana Legislature or the Wildlife and Fisheries Commission as a Public Oyster Seed Ground, Reservation, or area of Calcasieu or Sabine Lake. Proposed projects occurring in these areas will be evaluated on a case by case basis by Louisiana Department of Wildlife & Fisheries. Modifications to proposed project features including, but not limited to, access routes, well sites, flowlines, and appurtenant structures maybe required by the Louisiana Department of Wildlife and Fisheries. In addition, compensatory mitigation will be required to offset unavoidable habitat impacts.

Applicant: MITCHELL OIL & GAS, LLC

Bidder	Cash Payment	Price/Acre	Rental	Oil	Gas	Other

Legend
14060002
Blocks



TRACT 43938 - Plaquemines Parish, Louisiana

All of the lands now or formerly constituting the beds and bottoms of all water bodies of every nature and description as to which title is vested in the State of Louisiana, together with all islands arising therein and other lands formed by accretion or by reliction, where allowed by law, excepting tax adjudicated lands, and not presently under mineral lease on June 11, 2014, situated in Plaquemines Parish, Louisiana, and more particularly described as follows: Beginning at a point having Coordinates of X = 2,556,103.12 and Y = 339,419.76; thence North approximately 10,128 feet to a point on the Western boundary of North Portion of State Lease No. 195, as amended; thence along the boundaries of said North Portion of State Lease No. 195 the following courses: Easterly approximately 10,600 feet and Southern approximately 5,189 feet to a point of intersection with the North boundary of State Lease No. 18935, as amended having a Coordinate of Y = 344,431.00; thence along the boundaries of said State Lease No. 18935 the following courses: South 89 degrees 59 minutes 47 seconds West approximately 557 feet to a point having Coordinates of X = 2,566,150.00 and Y = 344,431.00, South 331.00 feet to a point having Coordinates of X = 2,566,150.00 and Y = 344,100.00, West 541.00 feet to a point having Coordinates of X = 2,565,609.00 and Y = 344,100.00, South 1,220.00 feet to a point having Coordinates of X = 2,565,609.00 and Y = 342,880.00 and East approximately 1,099 feet to a point of intersection with the Western boundary of said North Portion of State Lease No. 195 having a Coordinate of Y = 342,880.00; thence Southerly approximately 3,460 feet along said Western boundary of said State Lease No. 195 to a point having a Coordinate of Y = 339,419.76; thence West approximately 10,608 feet to point of beginning, **LESS AND EXCEPT** any portion of State Lease No. 195 and State Lease No. 18935 that may lie within the above described tract, the nominated tract containing approximately **2,439 acres**, all as more particularly outlined on a plat on file in the Office of Mineral Resources, Department of Natural Resources. All bearings, distances and coordinates are based on Louisiana Coordinate System of 1927, (North or South Zone), where applicable.

NOTE: The above description of the Tract nominated for lease has been provided and corrected, where required, exclusively by the nomination party. Any mineral lease selected from this Tract and awarded by the Louisiana State Mineral and Energy Board shall be without warranty of any kind, either express, implied, or statutory, including, but not limited to, the implied warranties of merchantability and fitness for a particular purpose. Should the mineral lease awarded by the Louisiana State Mineral and Energy Board be subsequently modified, cancelled or abrogated due to the existence of conflicting leases, operating agreements, private claims or other future obligations or conditions which may affect all or any portion of the leased Tract, it shall not relieve the Lessee of the obligation to pay any bonus due thereon to the Louisiana State Mineral and Energy Board, nor shall the Louisiana State Mineral and Energy Board be obligated to refund any consideration paid by the Lessor prior to such

modification, cancellation, or abrogation, including, but not limited to, bonuses, rentals and royalties.

NOTE: The State of Louisiana does hereby reserve, and this lease shall be subject to, the imprescriptible right of surface use in the nature of a servitude in favor of the Department of Natural Resources, including its Offices and Commissions, for the sole purpose of implementing, constructing, servicing and maintaining approved coastal zone management and/or restoration projects. Utilization of any and all rights derived under this lease by the mineral lessee, its agents, successors or assigns, shall not interfere with nor hinder the reasonable surface use by the Department of Natural Resources, its Offices or Commissions, as herein above reserved.

NOTE: This tract is located in an area designated by the Louisiana Legislature or the Wildlife and Fisheries Commission as a Public Oyster Seed Ground, Reservation, or area of Calcasieu or Sabine Lake. Proposed projects occurring in these areas will be evaluated on a case by case basis by Louisiana Department of Wildlife & Fisheries. Modifications to proposed project features including, but not limited to, access routes, well sites, flowlines, and appurtenant structures maybe required by the Louisiana Department of Wildlife and Fisheries. In addition, compensatory mitigation will be required to offset unavoidable habitat impacts.

Applicant: CYPRESS ENERGY CORPORATION

Bidder	Cash Payment	Price/Acre	Rental	Oil	Gas	Other

Legend

14060045

Active_Leases

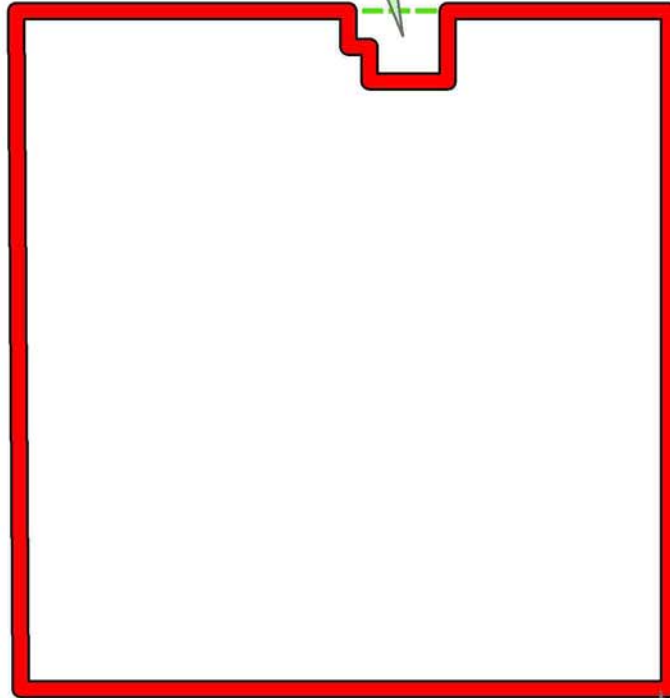


0 3,000 Feet

PLAQUEMINES

SL 195

BLACK BAY



SL 18935

P.O.B.

BAY CRABE