

TRACT 43950 - Calcasieu Parish, Louisiana

A certain Tract of land, excluding the beds and bottoms of all navigable waters, belonging to and not presently under mineral lease from Louisiana Department Of Transportation And Development on June 11, 2014, being more fully described as follows: Beginning at a point having Coordinates of X = 1,265,618.00 and Y = 548,948.00; thence East 4,360.00 feet to a point having Coordinates of X = 1,269,978.00 and Y = 548,948.00; thence South 2,880.00 feet to a point having Coordinates of X = 1,269,978.00 and Y = 546,068.00; thence West 4,360.00 feet to a point having Coordinates of X = 1,265,618.00 and Y = 546,068.00; thence North 2,880.00 feet to the point of beginning and being more particularly described as follows: Lots 1 to 12, inclusive in Block 13; Lots 1, 6 to 12, inclusive in Block 15 and Lots 1, 2 and 4 to 12, inclusive in Block 16 all in the Toomey Townsite formerly the Town of Jacksonville situated in the Northwest Quarter of Section 36, Township 10 South, Range 13 West. All that certain lot or parcel of land lying on the South side of the Louisiana Western Railroad (now the Southern Pacific Railroad), in the Southeast Quarter of the Southwest Quarter of Section 25, Township 10 South, Range 13 West, which area includes the existing highway U. S. Route No. 90. That certain tract or parcel of land situated in the extreme Northeastern corner of the Northeast Quarter of the Northwest Quarter of Section 36, Township 10 South, Range 13 West, said tract being bounded now or formerly as follows: Northern side by the boundary line between said Section 36 and Section 25, Township 10 South, Range 13 West; Northwestern side by the Southeastern boundary of the Texas and New Orleans Railroad (now the Southern Pacific Railroad); Southwestern side by an unnamed street along the Northeastern boundary of Block 13 of the Village of Jacksonville, Louisiana; Southern and Southeastern by lands owned by Lewis Roberts, containing approximately **13 acres**, all as more particularly outlined on a plat on file in the Office of Mineral Resources, Department of Natural Resources. The description is based on information provided by the State Agency regarding location and ownership of surface and mineral rights. All bearings, distances and coordinates, if applicable, are based on Louisiana Coordinate System of 1927, (North or South Zone).

NOTE: The above description of the Tract nominated for lease has been provided and corrected, where required, exclusively by the nomination party. Any mineral lease selected from this Tract and awarded by the Louisiana State Mineral and Energy Board shall be without warranty of any kind, either express, implied, or statutory, including, but not limited to, the implied warranties of merchantability and fitness for a particular purpose. Should the mineral lease awarded by the Louisiana State Mineral and Energy Board be subsequently modified, cancelled or abrogated due to the existence of conflicting leases, operating agreements, private claims or other future obligations or conditions which may affect all or any portion of the leased Tract, it shall not relieve the Lessee of the obligation to pay any bonus due thereon to the Louisiana State Mineral and Energy Board, nor shall the Louisiana State Mineral and Energy Board be obligated to refund any consideration paid by the Lessor prior to such

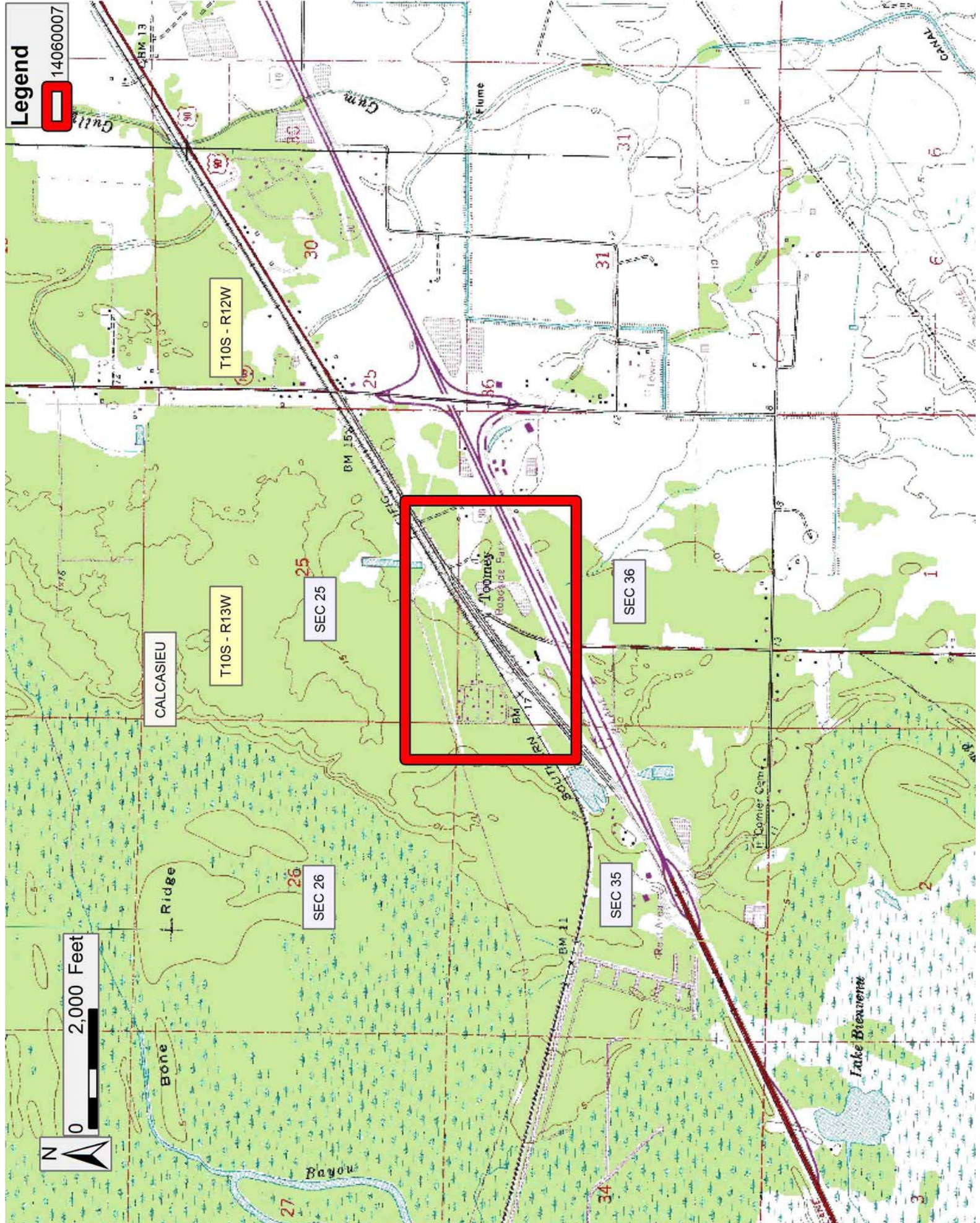
modification, cancellation, or abrogation, including, but not limited to, bonuses, rentals and royalties.

NOTE: No surface operations will be performed on the property.

Applicant: HEP ENERGY, INC. to Agency and by Resolution from the Louisiana Department Of Transportation And Development authorizing the Mineral Board to act in its behalf

Bidder	Cash Payment	Price/Acre	Rental	Oil	Gas	Other

Legend
14060007



TRACT 43951 - Calcasieu Parish, Louisiana

A certain Tract of land, excluding the beds and bottoms of all navigable waters, belonging to and not presently under mineral lease from Calcasieu Parish School Board on June 11, 2014, being more fully described as follows: Beginning at the Northwest corner of the Northeast Quarter of Section 36, Township 10 South, Range 13 West; thence South one acre and East two acres between parallel lines containing approximately **2 acres**, all as more particularly outlined on a plat on file in the Office of Mineral Resources, Department of Natural Resources. The description is based on information provided by the State Agency regarding location and ownership of surface and mineral rights. All bearings, distances and coordinates, if applicable, are based on Louisiana Coordinate System of 1927, (North or South Zone).

NOTE: The above description of the Tract nominated for lease has been provided and corrected, where required, exclusively by the nomination party. Any mineral lease selected from this Tract and awarded by the Louisiana State Mineral and Energy Board shall be without warranty of any kind, either express, implied, or statutory, including, but not limited to, the implied warranties of merchantability and fitness for a particular purpose. Should the mineral lease awarded by the Louisiana State Mineral and Energy Board be subsequently modified, cancelled or abrogated due to the existence of conflicting leases, operating agreements, private claims or other future obligations or conditions which may affect all or any portion of the leased Tract, it shall not relieve the Lessee of the obligation to pay any bonus due thereon to the Louisiana State Mineral and Energy Board, nor shall the Louisiana State Mineral and Energy Board be obligated to refund any consideration paid by the Lessor prior to such modification, cancellation, or abrogation, including, but not limited to, bonuses, rentals and royalties.

Applicant: HEP ENERGY, INC. to Agency and by Resolution from the Calcasieu Parish School Board authorizing the Mineral Board to act in its behalf

Bidder	Cash Payment	Price/Acre	Rental	Oil	Gas	Other

Legend
14060037

