

TRACT 43973 - Portion of Block 9, Breton Sound Area, Plaquemines Parish, Louisiana

The beds and bottoms of all water bodies belonging to the State of Louisiana located in Block 9, Breton Sound Area, together with any present lands formed by accretion to the shoreline or islands formed therein, located in Plaquemines Parish, Louisiana, owned by and not presently under mineral lease as of July 9, 2014, from the State of Louisiana, the geographical area of which is more fully described as follows: Beginning at a point having Coordinates of X = 2,753,350.00 and Y = 351,830.00, said point being the Southeast corner of Block 9, Breton Sound Area; thence West 12,120.04 feet along the South line of said Block 9, Breton Sound Area, to a point having Coordinates of X = 2,741,119.96 and Y = 351,830.00, said point on the Louisiana Coastline, as decreed by the Supreme Court of the United States, as determined by a Special Master appointed therein, in litigation styled *United States v. State of Louisiana et al No. 9 Original*, in 1975; thence along said Coastline the following courses: Northeasterly to a point having Coordinates of X = 2,742,583 and Y = 353,754; Northeasterly to a point having Coordinates of X = 2,743,352 and Y = 353,794; Northeasterly to a point having Coordinates of X = 2,744,222 and Y = 354,125; Northeasterly to a point having Coordinates of X = 2,746,309 and Y = 355,438; Northeasterly to a point having Coordinates of X = 2,749,221 and Y = 357,797; and Northeasterly to a point having Coordinates of X = 2,750,651.41 and Y = 359,200.00; thence East 2,698.59 feet along said North line of said Block 9, Breton Sound Area, to a point having Coordinates of X = 2,753,350.00 and Y = 359,200.00, said point being on the East line of said Block 9, Breton Sound Area; thence South 7,370.00 feet along said East line of said Block 9, Breton Sound Area, to the point of beginning, containing approximately **1,246.17 acres**, all as more particularly outlined on a plat on file in the Office of Mineral Resources, Department of Natural Resources. All bearings, distances and coordinates are based on Louisiana Coordinate System of 1927, (North or South Zone).

NOTE: The above description of the Tract nominated for lease has been provided and corrected, where required, exclusively by the nomination party. Any mineral lease selected from this Tract and awarded by the Louisiana State Mineral and Energy Board shall be without warranty of any kind, either express, implied, or statutory, including, but not limited to, the implied warranties of merchantability and fitness for a particular purpose. Should the mineral lease awarded by the Louisiana State Mineral and Energy Board be subsequently modified, cancelled or abrogated due to the existence of conflicting leases, operating agreements, private claims or other future obligations or conditions which may affect all or any portion of the leased Tract, it shall not relieve the Lessee of the obligation to pay any bonus due thereon to the Louisiana State Mineral and Energy Board, nor shall the Louisiana State Mineral and Energy Board be obligated to refund any consideration paid by the Lessor prior to such modification, cancellation, or abrogation, including, but not limited to, bonuses, rentals and royalties.

NOTE: The State of Louisiana does hereby reserve, and this lease shall be subject to, the imprescriptible right of surface use in the nature of a servitude in favor of the Department of Natural Resources, including its Offices and Commissions, for the sole purpose of implementing, constructing, servicing and maintaining approved coastal zone management and/or restoration projects. Utilization of any and all rights derived under this lease by the mineral lessee, its agents, successors or assigns, shall not interfere with nor hinder the reasonable surface use by the Department of Natural Resources, its Offices or Commissions, as herein above reserved.

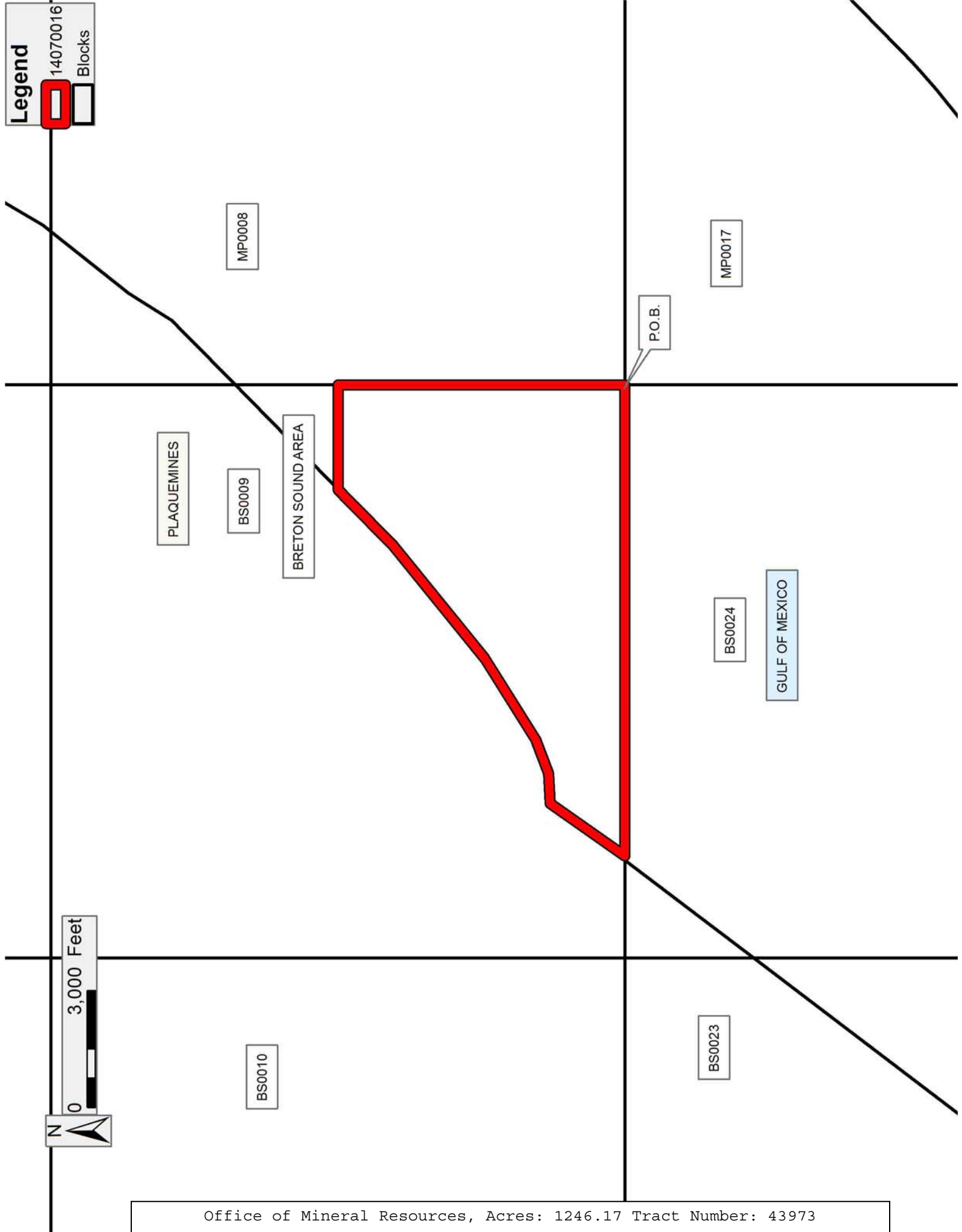
Applicant: ROBERT A. SCHROEDER, INC.

Bidder	Cash Payment	Price/Acre	Rental	Oil	Gas	Other

Legend

14070016

Blocks



0 3,000 Feet

TRACT 43974 - Portion of Block 8, Main Pass Area, Revised, Plaquemines Parish, Louisiana

The beds and bottoms of all water bodies belonging to the State of Louisiana located in Block 8, Main Pass Area, Revised, together with any present lands formed by accretion to the shoreline or islands formed therein, located in Plaquemines Parish, Louisiana, owned by and not presently under mineral lease as of July 9, 2014, from the State of Louisiana, the geographical area of which is more fully described as follows: Beginning at a point having Coordinates of X = 2,753,350.00 and Y = 351,830.00, said point being the Southwest corner of Block 8, Main Pass Area, Revised; thence North 7,370.00 feet along the West line of said Block 8, Main Pass Area, Revised, to a point having Coordinates of X = 2,753,350.00 and Y = 359,200.00; thence East 14,750.00 feet to a point having Coordinates of X = 2,768,100.00 and Y = 359,200.00, said point being on the East line of said Block 8, Main Pass Area, Revised; thence South 7,370.00 feet along said East line of said Block 8, Main Pass Area, Revised, to a point having Coordinates of X = 2,768,100.00 and Y = 351,830.00, said point being the southeast corner of said Block 8, Main Pass Area, Revised; thence West 14,750.00 feet along the South line of said Block 8, Main Pass Area, Revised, to the point of beginning, containing approximately **2,495.58 acres**, all as more particularly outlined on a plat on file in the Office of Mineral Resources, Department of Natural Resources. All bearings, distances and coordinates are based on Louisiana Coordinate System of 1927, (North or South Zone).

NOTE: The above description of the Tract nominated for lease has been provided and corrected, where required, exclusively by the nomination party. Any mineral lease selected from this Tract and awarded by the Louisiana State Mineral and Energy Board shall be without warranty of any kind, either express, implied, or statutory, including, but not limited to, the implied warranties of merchantability and fitness for a particular purpose. Should the mineral lease awarded by the Louisiana State Mineral and Energy Board be subsequently modified, cancelled or abrogated due to the existence of conflicting leases, operating agreements, private claims or other future obligations or conditions which may affect all or any portion of the leased Tract, it shall not relieve the Lessee of the obligation to pay any bonus due thereon to the Louisiana State Mineral and Energy Board, nor shall the Louisiana State Mineral and Energy Board be obligated to refund any consideration paid by the Lessor prior to such modification, cancellation, or abrogation, including, but not limited to, bonuses, rentals and royalties.

NOTE: The State of Louisiana does hereby reserve, and this lease shall be subject to, the imprescriptible right of surface use in the nature of a servitude in favor of the Department of Natural Resources, including its Offices and Commissions, for the sole purpose of implementing, constructing, servicing and maintaining approved coastal zone management and/or restoration projects. Utilization of any and all rights derived under this lease by the mineral lessee, its agents, successors or assigns,

shall not interfere with nor hinder the reasonable surface use by the Department of Natural Resources, its Offices or Commissions, as herein above reserved.

Applicant: ROBERT A. SCHROEDER, INC.

Bidder	Cash Payment	Price/Acre	Rental	Oil	Gas	Other

Legend
14070017
Blocks

MP0007

PLAQUEMINES

MP0008

MAIN PASS AREA, REVISED

MP0017

P.O.B.

BS0009

BRETON SOUND AREA

GULF OF MEXICO

0 3,000 Feet



TRACT 43975 - Portion of Block 24, Breton Sound Area, Plaquemines Parish, Louisiana

The beds and bottoms of all water bodies belonging to the State of Louisiana located in Block 24, Breton Sound Area, together with any present lands formed by accretion to the shoreline or islands formed therein, located in Plaquemines Parish, Louisiana, owned by and not presently under mineral lease as of July 9, 2014, from the State of Louisiana, the geographical area of which is more fully described as follows: Beginning at a point having Coordinates of X = 2,753,350.00 and Y = 351,830.00, said point being the northeast corner of Block 24, Breton Sound Area; Thence South 7,375.00 feet on and along the East line of said Block 24, Breton Sound Area, to a point having Coordinates of X = 2,753,350.00 and Y = 344,455.00; Thence West 14,750.00 feet to a point having Coordinates of X = 2,738,600.00 and Y = 344,455.00, said point being on the West line of said Block 24, Breton Sound Area; Thence North 4,061.07 feet on and along said West line of said Block 24, Breton Sound Area, to a point having Coordinates of X = 2,738,600.00 and Y = 348,516.07, said point being on the Coastline of Louisiana as defined by the report of the Special Master and set forth in the Judgment Decree in June of 1975 by the Supreme Court of the United States in the litigation styled United States v. State of Louisiana, et al No. 9 Original; Thence North 37 degrees 15 minutes 00 seconds East 4,163.21 feet on and along said Coastline to a point having Coordinates of X = 2,741,119.96 and Y = 351,830.00, said point being on the North line of said Block 24, Breton Sound Area; Thence East 12,230.04 feet on and along said North line of said Block 24, Breton Sound Area, to the Point of Beginning, containing approximately **2,401.42 acres**, all as more particularly outlined on a plat on file in the Office of Mineral Resources, Department of Natural Resources. All bearings, distances and coordinates are based on Louisiana Coordinate System of 1927, (North or South Zone).

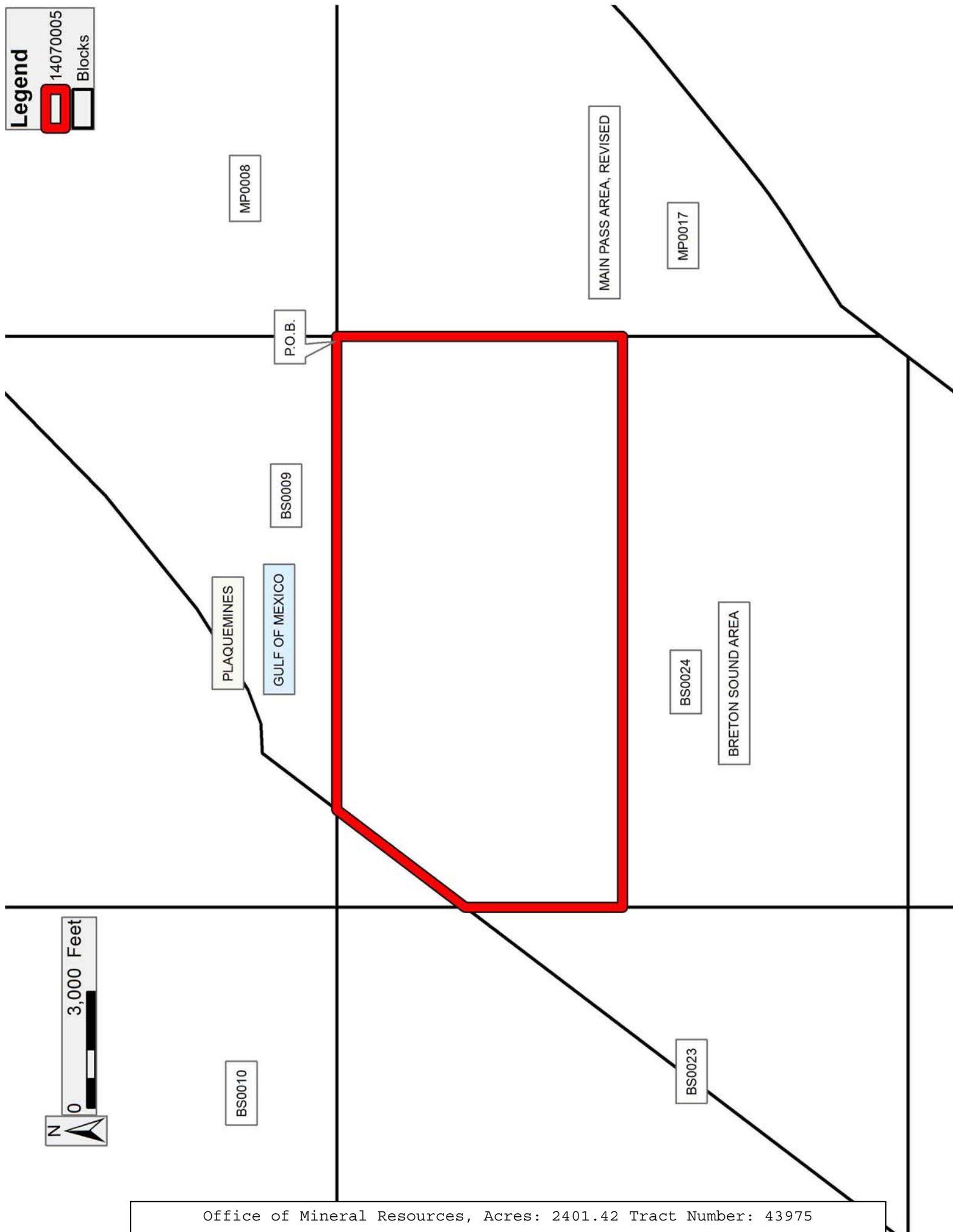
NOTE: The above description of the Tract nominated for lease has been provided and corrected, where required, exclusively by the nomination party. Any mineral lease selected from this Tract and awarded by the Louisiana State Mineral and Energy Board shall be without warranty of any kind, either express, implied, or statutory, including, but not limited to, the implied warranties of merchantability and fitness for a particular purpose. Should the mineral lease awarded by the Louisiana State Mineral and Energy Board be subsequently modified, cancelled or abrogated due to the existence of conflicting leases, operating agreements, private claims or other future obligations or conditions which may affect all or any portion of the leased Tract, it shall not relieve the Lessee of the obligation to pay any bonus due thereon to the Louisiana State Mineral and Energy Board, nor shall the Louisiana State Mineral and Energy Board be obligated to refund any consideration paid by the Lessor prior to such modification, cancellation, or abrogation, including, but not limited to, bonuses, rentals and royalties.

NOTE: The State of Louisiana does hereby reserve, and this lease shall be subject to, the imprescriptible right of surface use in the nature of a servitude in favor of the Department of Natural Resources, including its Offices and Commissions, for the sole purpose of implementing, constructing, servicing and maintaining approved coastal zone management and/or restoration projects. Utilization of any and all rights derived under this lease by the mineral lessee, its agents, successors or assigns, shall not interfere with nor hinder the reasonable surface use by the Department of Natural Resources, its Offices or Commissions, as herein above reserved.

Applicant: ROBERT A. SCHROEDER, INC.

Bidder	Cash Payment	Price/Acre	Rental	Oil	Gas	Other

Legend
14070005
Blocks



TRACT 43976 - Portion of Block 17, Main Pass Area, Revised, Plaquemines Parish, Louisiana

The beds and bottoms of all water bodies belonging to the State of Louisiana located in Block 17, Main Pass Area, Revised, together with any present lands formed by accretion to the shoreline or islands formed therein, located in Plaquemines Parish, Louisiana, owned by and not presently under mineral lease as of July 9, 2014, from the State of Louisiana, the geographical area of which is more fully described as follows: Beginning at a point having Coordinates of X = 2,753,350.00 and Y = 351,830.00, said point being the Northwest corner of Block 17, Main Pass Area, Revised; thence East 11,000.00 feet along the North line of said Block 17, Main Pass Area, Revised, to a point having Coordinates of X = 2,764,350.00 and Y = 351,830.00; thence South 4,744.14 feet to a point having Coordinates of X = 2,764,350.00 and Y = 347,085.86, said point being on the Three Mile Line, as decreed by the Supreme Court of the United States, as determined by a Special Master appointed therein, in litigation styled *United States v. State of Louisiana et al No. 9 Original*, in 1975; thence on and along said Three Mile Line the following courses: Southwesterly to a point having Coordinates of X = 2,761,994 and Y = 344,775; Southwesterly on an arc having a radius of 18,240.60 feet and a center at X = 2,749,221 and Y = 357,797 to a point having Coordinates of X = 2,760,703 and Y = 343,624; Southwesterly to a point having Coordinates of X = 2,757,791 and Y = 341,265; Southwesterly on an arc having a radius of 18,240.60 feet and a center at X = 2,746,309 and Y = 355,438 to a point having Coordinates of X = 2,756,022 and Y = 339,999; Southwesterly to a point having Coordinates of X = 2,754,136 and Y = 338,812; and Southwesterly to a point having Coordinates of X = 2,753,350.00 and Y = 337,778.30, said point being on the West line of said Block 17, Main Pass Area; thence North 14,051.70 feet along said West line of said Block 17, Main Pass Area, to the point of beginning, containing approximately **2,411.20 acres, LESS AND EXCEPT** that portion thereof, if any, lying seaward of the line three nautical miles from the coast line of Louisiana, as said three mile line has been decreed by the Supreme Court of the United States, as determined by a Special Master appointed therein, in litigation styled **United States v. State of Louisiana et al No. 9 Original**, in 1975, all as more particularly outlined on a plat in the Office of Mineral Resources, Department of Natural Resources. All bearings, distances and coordinates are based on the Louisiana Coordinate System of 1927, (South Zone).

NOTE: The above description of the Tract nominated for lease has been provided and corrected, where required, exclusively by the nomination party. Any mineral lease selected from this Tract and awarded by the Louisiana State Mineral and Energy Board shall be without warranty of any kind, either express, implied, or statutory, including, but not limited to, the implied warranties of merchantability and fitness for a particular purpose. Should the mineral lease awarded by the Louisiana State Mineral and Energy Board be subsequently modified, cancelled or abrogated due to the existence of conflicting leases, operating agreements, private claims

or other future obligations or conditions which may affect all or any portion of the leased Tract, it shall not relieve the Lessee of the obligation to pay any bonus due thereon to the Louisiana State Mineral and Energy Board, nor shall the Louisiana State Mineral and Energy Board be obligated to refund any consideration paid by the Lessor prior to such modification, cancellation, or abrogation, including, but not limited to, bonuses, rentals and royalties.

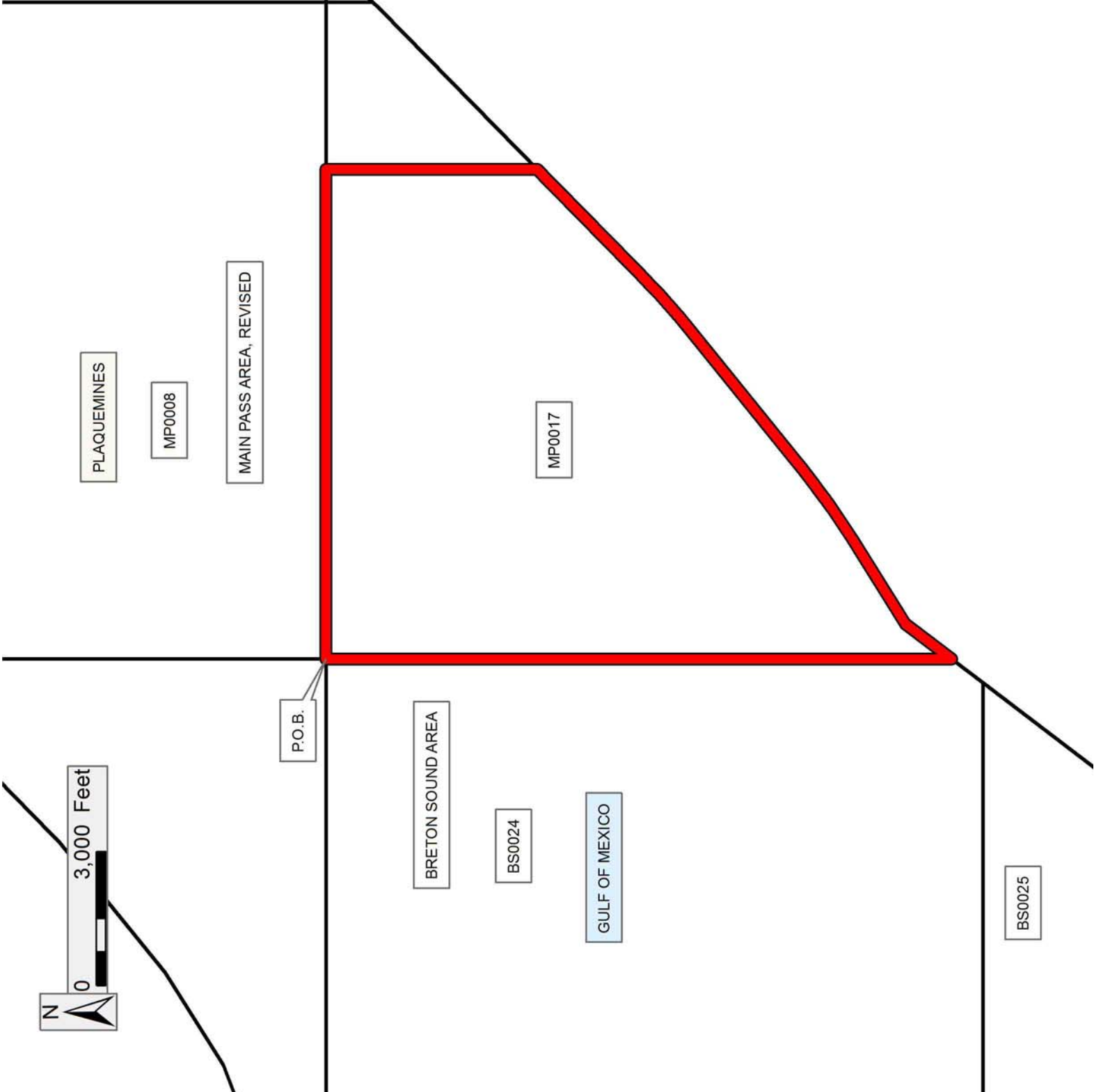
NOTE: The State of Louisiana does hereby reserve, and this lease shall be subject to, the imprescriptible right of surface use in the nature of a servitude in favor of the Department of Natural Resources, including its Offices and Commissions, for the sole purpose of implementing, constructing, servicing and maintaining approved coastal zone management and/or restoration projects. Utilization of any and all rights derived under this lease by the mineral lessee, its agents, successors or assigns, shall not interfere with nor hinder the reasonable surface use by the Department of Natural Resources, its Offices or Commissions, as herein above reserved.

Applicant: ROBERT A. SCHROEDER, INC.

Bidder	Cash Payment	Price/Acre	Rental	Oil	Gas	Other

Legend

14070011
Blocks



TRACT 43977 - Portion of Block 23, Breton Sound Area, Plaquemines Parish, Louisiana

The beds and bottoms of all water bodies belonging to the State of Louisiana located in Block 23, Breton Sound Area, together with any present lands formed by accretion to the shoreline or islands formed therein, located in Plaquemines Parish, Louisiana, owned by and not presently under mineral lease as of July 9, 2014, from the State of Louisiana, the geographical area of which is more fully described as follows: Beginning at a point having Coordinates of X = 2,738,600.00 and Y = 337,080.00, said point being the southeast corner of Block 23, Breton Sound Area; Thence West 8,696.17 feet on and along the South line of said Block 23, Breton Sound Area, to a point having Coordinates of X = 2,729,903.83 and Y = 337,080.00, said point being on the Coastline of Louisiana as defined by the report of the Special Master and set forth in the Judgment Decree in June of 1975 by the Supreme Court of the United States in the litigation styled United States v. State of Louisiana, et al No. 9 Original; Thence North 37 degrees 15 minutes 00 seconds East 14,366.87 feet on and along said Coastline to a point having Coordinates of X = 2,738,600.00 and Y = 348,516.07, said point being on the East line of said Block 23, Breton Sound Area; Thence South 11,436.07 feet on and along said East line of said Block 23, Breton Sound Area, to the Point of Beginning, containing approximately **1,141.53 acres**, all as more particularly outlined on a plat on file in the Office of Mineral Resources, Department of Natural Resources. All bearings, distances and coordinates are based on Louisiana Coordinate System of 1927, (North or South Zone).

NOTE: The above description of the Tract nominated for lease has been provided and corrected, where required, exclusively by the nomination party. Any mineral lease selected from this Tract and awarded by the Louisiana State Mineral and Energy Board shall be without warranty of any kind, either express, implied, or statutory, including, but not limited to, the implied warranties of merchantability and fitness for a particular purpose. Should the mineral lease awarded by the Louisiana State Mineral and Energy Board be subsequently modified, cancelled or abrogated due to the existence of conflicting leases, operating agreements, private claims or other future obligations or conditions which may affect all or any portion of the leased Tract, it shall not relieve the Lessee of the obligation to pay any bonus due thereon to the Louisiana State Mineral and Energy Board, nor shall the Louisiana State Mineral and Energy Board be obligated to refund any consideration paid by the Lessor prior to such modification, cancellation, or abrogation, including, but not limited to, bonuses, rentals and royalties.

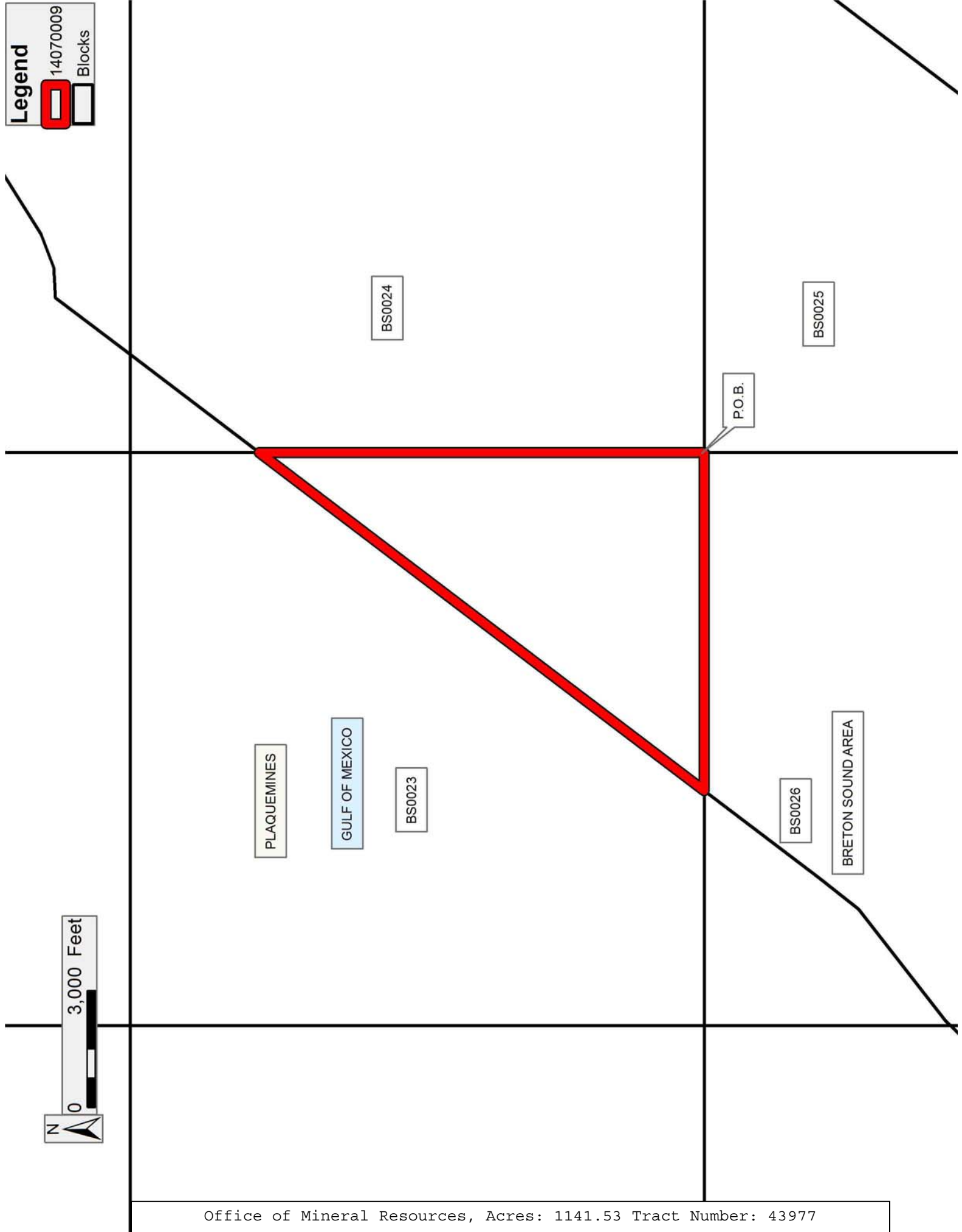
NOTE: The State of Louisiana does hereby reserve, and this lease shall be subject to, the imprescriptible right of surface use in the nature of a servitude in favor of the Department of Natural Resources, including its Offices and Commissions, for the sole purpose of implementing, constructing, servicing and maintaining approved coastal zone management

and/or restoration projects. Utilization of any and all rights derived under this lease by the mineral lessee, its agents, successors or assigns, shall not interfere with nor hinder the reasonable surface use by the Department of Natural Resources, its Offices or Commissions, as herein above reserved.

Applicant: ROBERT A. SCHROEDER, INC.

Bidder	Cash Payment	Price/Acre	Rental	Oil	Gas	Other

Legend
14070009
Blocks



TRACT 43978 - Portion of Block 24, Breton Sound Area, Plaquemines Parish, Louisiana

The beds and bottoms of all water bodies belonging to the State of Louisiana located in Block 24, Breton Sound Area, together with any present lands formed by accretion to the shoreline or islands formed therein, located in Plaquemines Parish, Louisiana, owned by and not presently under mineral lease as of July 9, 2014, from the State of Louisiana, the geographical area of which is more fully described as follows: Beginning at a point having Coordinates of X = 2,738,600.00 and Y = 337,080.00, said point being the southwest corner of Block 24, Breton Sound Area; Thence North 7,375.00 feet on and along the West line of said Block 24, Breton Sound Area, to a point having Coordinates of X = 2,738,600.00 and Y = 344,455.00; Thence East 14,750.00 feet to a point having Coordinates of X = 2,753,350.00 and Y = 344,455.00, said point being on the East line of said Block 24, Breton Sound Area; Thence South 6,676.70 feet on and along said East line of said Block 24, Breton Sound Area, to a point having Coordinates of X = 2,753,350.00 and Y = 337,778.30, said point being on the Three Mile Line; Thence South 37 degrees 14 minutes 54 seconds West 877.24 feet on and along said Three Mile Line to a point having Coordinates of X = 2,752,819.03 and Y = 337,080.00, said point being on the South line of said Block 24, Breton Sound Area; Thence West 14,219.03 feet on and along said South line of said Block 24, Breton Sound Area, to the point of beginning, containing approximately **2,493.02 acres, LESS AND EXCEPT** that portion thereof, if any, lying seaward of the line three nautical miles from the coast line of Louisiana, as said three mile line has been decreed by the Supreme Court of the United States, as determined by a Special Master appointed therein, in litigation styled **United States v. State of Louisiana et al No. 9 Original**, in 1975, all as more particularly outlined on a plat in the Office of Mineral Resources, Department of Natural Resources. All bearings, distances and coordinates are based on the Louisiana Coordinate System of 1927, (South Zone).

NOTE: The above description of the Tract nominated for lease has been provided and corrected, where required, exclusively by the nomination party. Any mineral lease selected from this Tract and awarded by the Louisiana State Mineral and Energy Board shall be without warranty of any kind, either express, implied, or statutory, including, but not limited to, the implied warranties of merchantability and fitness for a particular purpose. Should the mineral lease awarded by the Louisiana State Mineral and Energy Board be subsequently modified, cancelled or abrogated due to the existence of conflicting leases, operating agreements, private claims or other future obligations or conditions which may affect all or any portion of the leased Tract, it shall not relieve the Lessee of the obligation to pay any bonus due thereon to the Louisiana State Mineral and Energy Board, nor shall the Louisiana State Mineral and Energy Board be obligated to refund any consideration paid by the Lessor prior to such modification, cancellation, or abrogation, including, but not limited to, bonuses, rentals and royalties.

NOTE: The State of Louisiana does hereby reserve, and this lease shall be subject to, the imprescriptible right of surface use in the nature of a servitude in favor of the Department of Natural Resources, including its Offices and Commissions, for the sole purpose of implementing, constructing, servicing and maintaining approved coastal zone management and/or restoration projects. Utilization of any and all rights derived under this lease by the mineral lessee, its agents, successors or assigns, shall not interfere with nor hinder the reasonable surface use by the Department of Natural Resources, its Offices or Commissions, as herein above reserved.

Applicant: ROBERT A. SCHROEDER, INC.

Bidder	Cash Payment	Price/Acre	Rental	Oil	Gas	Other

Legend
14070004
Blocks

MP0017

PLAQUEMINES

BS0024

GULF OF MEXICO

BS0025

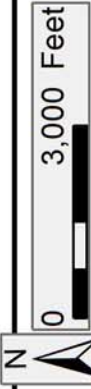
BRETON SOUND AREA

BS0023

P.O.B.

BS0026

0 3,000 Feet



TRACT 43979 - Portion of Block 26, Breton Sound Area, Plaquemines Parish, Louisiana

The beds and bottoms of all water bodies belonging to the State of Louisiana located in Block 26, Breton Sound Area, together with any present lands formed by accretion to the shoreline or islands formed therein, located in Plaquemines Parish, Louisiana, owned by and not presently under mineral lease as of July 9, 2014, from the State of Louisiana, the geographical area of which is more fully described as follows: Beginning at a point having Coordinates of X = 2,738,600.00 and Y = 337,080.00, said point being the northeast corner of Block 26, Breton Sound Area; Thence South 7,375.00 feet on and along the East line of said Block 26, Breton Sound Area, to a point having Coordinates of X = 2,738,600.00 and Y = 329,705.00; Thence West 14,750.00 feet to a point having Coordinates of X = 2,723,850.00 and Y = 329,705.00, said point being on the West line of said Block 26, Breton Sound Area; Thence North 1,034.83 feet on and along said West line of said Block 26, Breton Sound Area, to a point having Coordinates of X = 2,723,850.00 and Y = 330,739.83, said point being on the Coastline of Louisiana as defined by the report of the Special Master and set forth in the Judgment Decree in June of 1975 by the Supreme Court of the United States in the litigation styled *United States v. State of Louisiana, et al No. 9 Original*; Thence on and along said Coastline the following courses and distances, to wit: North 44 degrees 16 minutes 57 seconds East 179.03 feet to a point having Coordinates of X = 2,723,975.00 and Y = 330,868.00; North 52 degrees 09 minutes 29 seconds East 3,643.12 feet to a point having Coordinates of X = 2,726,852.00 and Y = 333,103.00; North 38 degrees 13 minutes 28 seconds East 1,294.56 feet to a point having Coordinates of X = 2,727,653.00 and Y = 334,120.00; and North 37 degrees 15 minutes 00 seconds East 3,718.58 feet to a point having Coordinates of X = 2,729,903.83 and Y = 337,080.00, said point being on the North line of said Block 26, Breton Sound Area; Thence East 8,696.17 feet on and along said North line of said Block 26, Breton Sound Area, to the Point of Beginning, containing approximately **2,002.54 acres, LESS AND EXCEPT** that portion thereof, if any, lying seaward of the line three nautical miles from the coast line of Louisiana, as said three mile line has been decreed by the Supreme Court of the United States, as determined by a Special Master appointed therein, in litigation styled **United States v. State of Louisiana et al No. 9 Original**, in 1975, all as more particularly outlined on a plat in the Office of Mineral Resources, Department of Natural Resources. All bearings, distances and coordinates are based on the Louisiana Coordinate System of 1927, (South Zone).

NOTE: The above description of the Tract nominated for lease has been provided and corrected, where required, exclusively by the nomination party. Any mineral lease selected from this Tract and awarded by the Louisiana State Mineral and Energy Board shall be without warranty of any kind, either express, implied, or statutory, including, but not limited to, the implied warranties of merchantability and fitness for a particular purpose. Should the mineral lease awarded by the Louisiana State Mineral

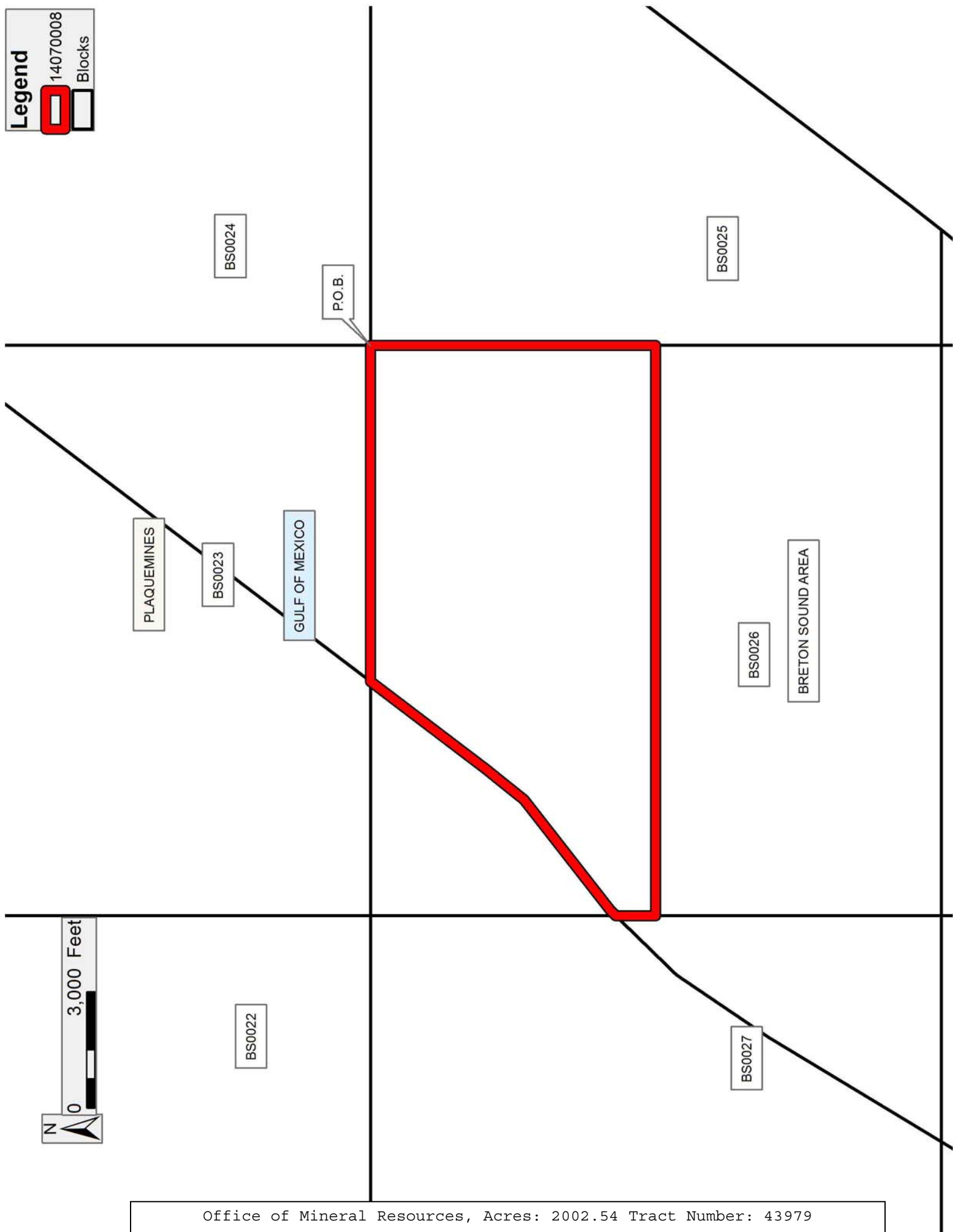
and Energy Board be subsequently modified, cancelled or abrogated due to the existence of conflicting leases, operating agreements, private claims or other future obligations or conditions which may affect all or any portion of the leased Tract, it shall not relieve the Lessee of the obligation to pay any bonus due thereon to the Louisiana State Mineral and Energy Board, nor shall the Louisiana State Mineral and Energy Board be obligated to refund any consideration paid by the Lessor prior to such modification, cancellation, or abrogation, including, but not limited to, bonuses, rentals and royalties.

NOTE: The State of Louisiana does hereby reserve, and this lease shall be subject to, the imprescriptible right of surface use in the nature of a servitude in favor of the Department of Natural Resources, including its Offices and Commissions, for the sole purpose of implementing, constructing, servicing and maintaining approved coastal zone management and/or restoration projects. Utilization of any and all rights derived under this lease by the mineral lessee, its agents, successors or assigns, shall not interfere with nor hinder the reasonable surface use by the Department of Natural Resources, its Offices or Commissions, as herein above reserved.

Applicant: ROBERT A. SCHROEDER, INC.

Bidder	Cash Payment	Price/Acre	Rental	Oil	Gas	Other

Legend
 14070008
 Blocks



TRACT 43980 - Portion of Block 25, Breton Sound Area, Plaquemines Parish, Louisiana

The beds and bottoms of all water bodies belonging to the State of Louisiana located in Block 25, Breton Sound Area, together with any present lands formed by accretion to the shoreline or islands formed therein, located in Plaquemines Parish, Louisiana, owned by and not presently under mineral lease as of July 9, 2014, from the State of Louisiana, the geographical area of which is more fully described as follows: Beginning at a point having Coordinates of X = 2,738,600.00 and Y = 322,330.00, said point being the southwest corner of Block 25, Breton Sound Area; Thence North 14,750.00 feet on and along the West line of said Block 25, Breton Sound Area, to a point having Coordinates of X = 2,738,600.00 and Y = 337,080.00, said point being the northwest corner of said Block 25, Breton Sound Area; Thence East 14,219.03 feet on and along the North line of said Block 25, Breton Sound Area, to a point having Coordinates of X = 2,752,819.03 and Y = 337,080.00, said point being on the Three Mile Line; Thence South 37 degrees 14 minutes 55 seconds West 9,264.87 feet on and along said Three Mile Line to a point having Coordinates of X = 2,747,211.25 and Y = 329,705.00, said point being the northeast corner of State of Louisiana State Lease No. 19718; Thence on and along the northern and western boundaries of said State of Louisiana State Lease No. 19718 the following courses and distances, to wit: West 2,512.50 feet to a point having Coordinates of X = 2,744,698.75 and Y = 329,705.00, said point being the northwest corner of said State of Louisiana State Lease No. 19718; and South 37 degrees 14 minutes 55 seconds West 9,264.87 feet to a point having Coordinates of X = 2,739,090.97 and Y = 322,330.00, said point being the southwest corner of said State of Louisiana State Lease No. 19718, said point also being on the South line of said Block 25, Breton Sound Area; Thence West 490.97 feet on and along said South line of said Block 25, Breton Sound Area, to the point of beginning, containing approximately **2,490.51 acres, LESS AND EXCEPT** that portion thereof, if any, lying seaward of the line three nautical miles from the coast line of Louisiana, as said three mile line has been decreed by the Supreme Court of the United States, as determined by a Special Master appointed therein, in litigation styled **United States v. State of Louisiana et al No. 9 Original**, in 1975, all as more particularly outlined on a plat in the Office of Mineral Resources, Department of Natural Resources. All bearings, distances and coordinates are based on the Louisiana Coordinate System of 1927, (South Zone).

NOTE: The above description of the Tract nominated for lease has been provided and corrected, where required, exclusively by the nomination party. Any mineral lease selected from this Tract and awarded by the Louisiana State Mineral and Energy Board shall be without warranty of any kind, either express, implied, or statutory, including, but not limited to, the implied warranties of merchantability and fitness for a particular purpose. Should the mineral lease awarded by the Louisiana State Mineral and Energy Board be subsequently modified, cancelled or abrogated due to the existence of conflicting leases, operating agreements, private claims

or other future obligations or conditions which may affect all or any portion of the leased Tract, it shall not relieve the Lessee of the obligation to pay any bonus due thereon to the Louisiana State Mineral and Energy Board, nor shall the Louisiana State Mineral and Energy Board be obligated to refund any consideration paid by the Lessor prior to such modification, cancellation, or abrogation, including, but not limited to, bonuses, rentals and royalties.

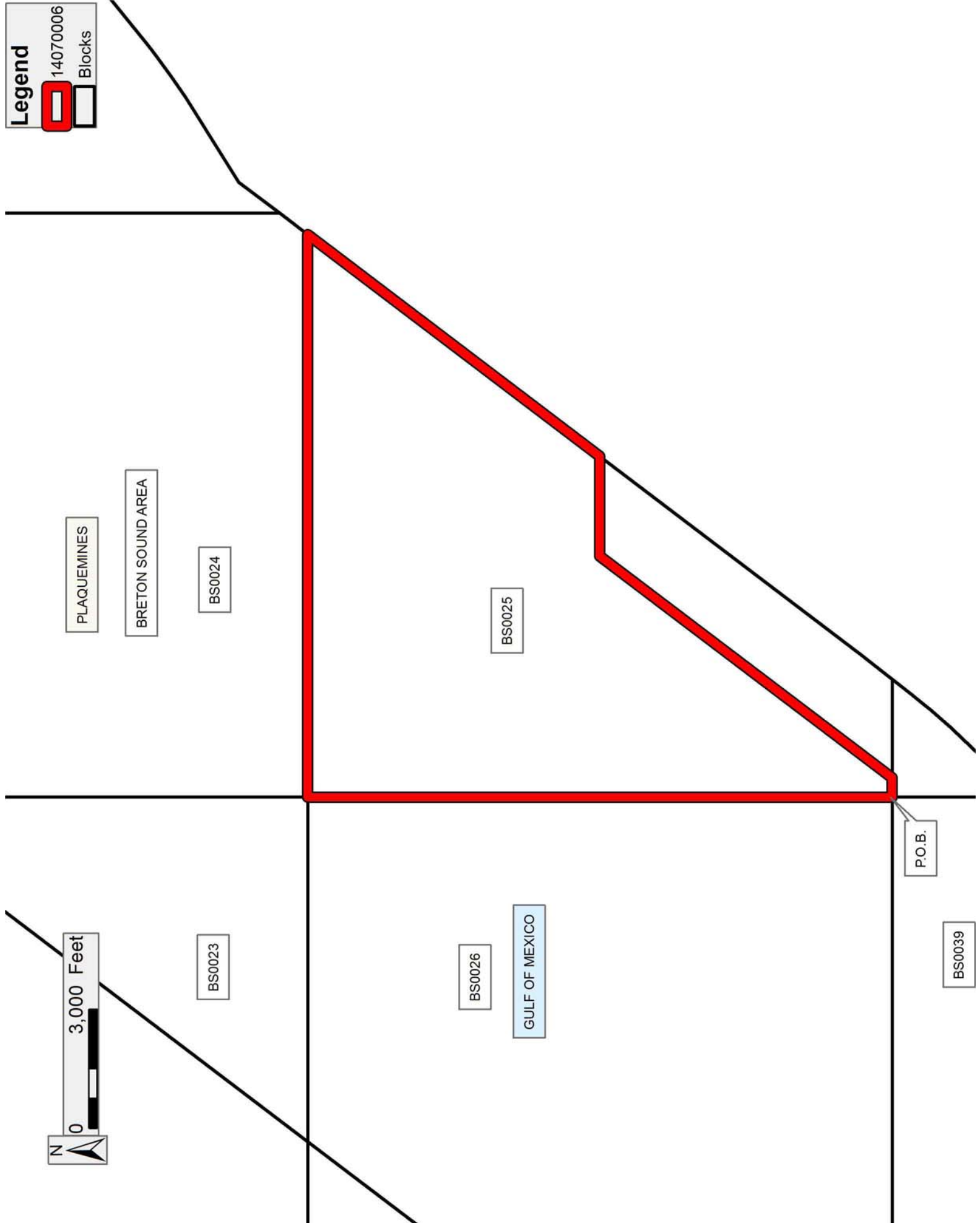
NOTE: The State of Louisiana does hereby reserve, and this lease shall be subject to, the imprescriptible right of surface use in the nature of a servitude in favor of the Department of Natural Resources, including its Offices and Commissions, for the sole purpose of implementing, constructing, servicing and maintaining approved coastal zone management and/or restoration projects. Utilization of any and all rights derived under this lease by the mineral lessee, its agents, successors or assigns, shall not interfere with nor hinder the reasonable surface use by the Department of Natural Resources, its Offices or Commissions, as herein above reserved.

Applicant: ROBERT A. SCHROEDER, INC.

Bidder	Cash Payment	Price/Acre	Rental	Oil	Gas	Other

Legend

14070006
Blocks



TRACT 43981 - Portion of Block 26, Breton Sound Area, Plaquemines Parish, Louisiana

The beds and bottoms of all water bodies belonging to the State of Louisiana located in Block 26, Breton Sound Area, together with any present lands formed by accretion to the shoreline or islands formed therein, located in Plaquemines Parish, Louisiana, owned by and not presently under mineral lease as of July 9, 2014, from the State of Louisiana, the geographical area of which is more fully described as follows: Beginning at a point having Coordinates of X = 2,738,600.00 and Y = 322,330.00, said point being the southeast corner of Block 26, Breton Sound Area; Thence West 14,750.00 feet on and along the South line of said Block 26, Breton Sound Area, to a point having Coordinates of X = 2,723,850.00 and Y = 322,330.00, said point being the southwest corner of said Block 26, Breton Sound Area; Thence North 7,375.00 feet on and along the West line of said Block 26, Breton Sound Area, to a point having Coordinates of X = 2,723,850.00 and Y = 329,705.00; Thence East 14,750.00 feet to a point having Coordinates of X = 2,738,600.00 and Y = 329,705.00, said point being on the East line of said Block 26, Breton Sound Area; Thence South 7,375.00 feet on and along said East line of said Block 26, Breton Sound Area, to the Point of Beginning, containing approximately **2,497.28 acres, LESS AND EXCEPT** that portion thereof, if any, lying seaward of the line three nautical miles from the coast line of Louisiana, as said three mile line has been decreed by the Supreme Court of the United States, as determined by a Special Master appointed therein, in litigation styled **United States v. State of Louisiana et al No. 9 Original**, in 1975, all as more particularly outlined on a plat in the Office of Mineral Resources, Department of Natural Resources. All bearings, distances and coordinates are based on the Louisiana Coordinate System of 1927, (South Zone).

NOTE: The above description of the Tract nominated for lease has been provided and corrected, where required, exclusively by the nomination party. Any mineral lease selected from this Tract and awarded by the Louisiana State Mineral and Energy Board shall be without warranty of any kind, either express, implied, or statutory, including, but not limited to, the implied warranties of merchantability and fitness for a particular purpose. Should the mineral lease awarded by the Louisiana State Mineral and Energy Board be subsequently modified, cancelled or abrogated due to the existence of conflicting leases, operating agreements, private claims or other future obligations or conditions which may affect all or any portion of the leased Tract, it shall not relieve the Lessee of the obligation to pay any bonus due thereon to the Louisiana State Mineral and Energy Board, nor shall the Louisiana State Mineral and Energy Board be obligated to refund any consideration paid by the Lessor prior to such modification, cancellation, or abrogation, including, but not limited to, bonuses, rentals and royalties.

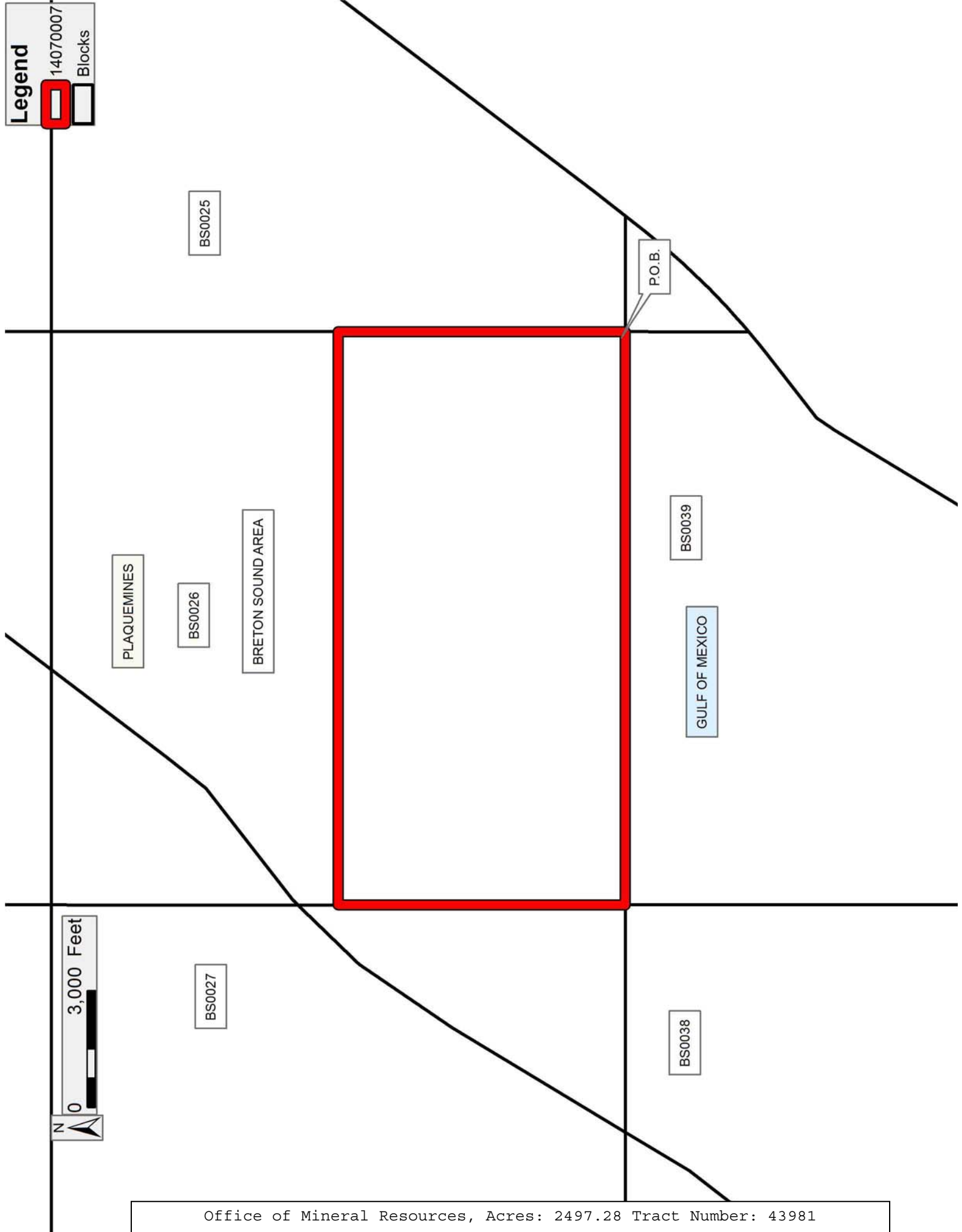
NOTE: The State of Louisiana does hereby reserve, and this lease shall be subject to, the imprescriptible right of surface use in the nature of a

servitude in favor of the Department of Natural Resources, including its Offices and Commissions, for the sole purpose of implementing, constructing, servicing and maintaining approved coastal zone management and/or restoration projects. Utilization of any and all rights derived under this lease by the mineral lessee, its agents, successors or assigns, shall not interfere with nor hinder the reasonable surface use by the Department of Natural Resources, its Offices or Commissions, as herein above reserved.

Applicant: ROBERT A. SCHROEDER, INC.

Bidder	Cash Payment	Price/Acre	Rental	Oil	Gas	Other

Legend
14070007
Blocks



TRACT 43982 - Portion of Blocks 39, and 40, Breton Sound Area, Plaquemines Parish, Louisiana

The beds and bottoms of all water bodies belonging to the State of Louisiana located in Blocks 39, and 40, Breton Sound Area, together with any present lands formed by accretion to the shoreline or islands formed therein, located in Plaquemines Parish, Louisiana, owned by and not presently under mineral lease as of July 9, 2014, from the State of Louisiana, the geographical area of which is more fully described as follows: Beginning at a point having Coordinates of X = 2,738,600.00 and Y = 322,330.00, said point being the Northwest corner of Block 40, Breton Sound Area; thence East 2,986.04 feet along the North line of said Block 40, Breton Sound Area, to a point having Coordinates of X = 2,741,586.04 and Y = 322,330.00, said point being on the Three Mile Line, as decreed by the Supreme Court of the United States, as determined by a Special Master appointed therein, in litigation styled *United States v. State of Louisiana et al No. 9 Original*, in 1975; thence along said Three Mile Line the following: Southwesterly to a point having Coordinates of X = 2,741,182 and Y = 321,817; Southwesterly on an arc having a radius of 18,240.60 feet and a center of X = 2,726,852 and Y = 333,103 to a point on the West line of said Block 40, Breton Sound Area, and a point on the East line of Block 39, Breton Sound Area, having Coordinates of X = 2,738,600.00 and Y = 319,149.33; Southwesterly on an arc having a radius of 18,240.60 feet and a center of X = 2,726,852 and Y = 333,103 to a point having Coordinates of X = 2,738,042 and Y = 318,698; Southwesterly to a point having Coordinates of X = 2,736,381 and Y = 317,408; Southwesterly to a point having Coordinates of X = 2,736,060 and Y = 316,935; and Southwesterly to a point having Coordinates of X = 2,734,864.55 and Y = 314,955.00; thence West 11,014.55 feet to a point having Coordinates of X = 2,723,850.00 and Y = 314,955.00, said point being on the West line of said Block 39, Breton Sound Area; thence North 7,375.00 feet along said West line of said Block 39, Breton Sound Area, to a point having Coordinates of X = 2,723,850.00 and Y = 322,330.00, said point being the Northwest corner of said Block 39, Breton Sound Area; thence East 14,750.00 feet along the North line of said Block 39, Breton Sound Area, to the point of beginning, containing approximately **2,402.07 acres, LESS AND EXCEPT** that portion thereof, if any, lying seaward of the line three nautical miles from the coast line of Louisiana, as said three mile line has been decreed by the Supreme Court of the United States, as determined by a Special Master appointed therein, in litigation styled **United States v. State of Louisiana et al No. 9 Original**, in 1975, all as more particularly outlined on a plat in the Office of Mineral Resources, Department of Natural Resources. All bearings, distances and coordinates are based on the Louisiana Coordinate System of 1927, (South Zone).

NOTE: The above description of the Tract nominated for lease has been provided and corrected, where required, exclusively by the nomination party. Any mineral lease selected from this Tract and awarded by the Louisiana State Mineral and Energy Board shall be without warranty of any kind, either express, implied, or statutory, including, but not limited

to, the implied warranties of merchantability and fitness for a particular purpose. Should the mineral lease awarded by the Louisiana State Mineral and Energy Board be subsequently modified, cancelled or abrogated due to the existence of conflicting leases, operating agreements, private claims or other future obligations or conditions which may affect all or any portion of the leased Tract, it shall not relieve the Lessee of the obligation to pay any bonus due thereon to the Louisiana State Mineral and Energy Board, nor shall the Louisiana State Mineral and Energy Board be obligated to refund any consideration paid by the Lessor prior to such modification, cancellation, or abrogation, including, but not limited to, bonuses, rentals and royalties.

NOTE: The State of Louisiana does hereby reserve, and this lease shall be subject to, the imprescriptible right of surface use in the nature of a servitude in favor of the Department of Natural Resources, including its Offices and Commissions, for the sole purpose of implementing, constructing, servicing and maintaining approved coastal zone management and/or restoration projects. Utilization of any and all rights derived under this lease by the mineral lessee, its agents, successors or assigns, shall not interfere with nor hinder the reasonable surface use by the Department of Natural Resources, its Offices or Commissions, as herein above reserved.

Applicant: ROBERT A. SCHROEDER, INC.

Bidder	Cash Payment	Price/Acre	Rental	Oil	Gas	Other

Legend

- 14070012
- Blocks
- Active_Leases

SL 19718

P.O.B.

PLAQUEMINES

BS0026

GULF OF MEXICO

BS0039

BRETON SOUND AREA



BS0027

BS0038