

**TRACT 43983 - Portion of Block 75, Main Pass Area, Revised, Plaquemines Parish, Louisiana**

The beds and bottoms of all water bodies belonging to the State of Louisiana located in Block 75, Main Pass Area, Revised, together with any present lands formed by accretion to the shoreline or islands formed therein, located in Plaquemines Parish, Louisiana, owned by and not presently under mineral lease as of July 9, 2014, from the State of Louisiana, the geographical area of which is more fully described as follows: Beginning at a point on the East line of Block 75, Main Pass Area, Revised, said corner also being the Southwest corner of State Lease No. 6706 having Coordinates of X = 2,763,508.00 and Y = 204,332.03; thence West 8,242.14 feet to a point on the Louisiana Coastline, as decreed by the Supreme Court of the United States, as determined by a Special Master appointed therein, in litigation styled *United States v. State of Louisiana et al No. 9 Original*, in 1975, having Coordinates of X = 2,755,265.86 and Y = 204,332.03; thence along the boundary of said Coastline the following courses: Northeasterly on a straight line to a point having Coordinates of X = 2,755,325.00 and Y = 204,680.00; and Northwesterly on a straight line to the Southeast corner of State Lease No. 21269 having Coordinates of X = 2,754,818.00 and Y = 204,885.80; thence North 4,389.20 feet along the East line of said State Lease No. 21269 to its Northeast corner having Coordinates of X = 2,754,818.00 and Y = 209,275.00; thence North 3,365.00 feet to a point on the South line of State Lease No. 21268 having Coordinates of X = 2,754,818.00 and Y = 212,640.00; thence East 4,752.50 feet along the South line of said State Lease No. 21268 to its Southeast corner, said corner also being a point on the West line of State Lease No. 21292 having Coordinates of X = 2,759,570.50 and Y = 212,640.00; thence South 561.81 feet along the West line of said State Lease No. 21292 to its Southwest corner having Coordinates of X = 2,759,570.50 and Y = 212,078.19; thence East 2,137.50 feet along the South line of said State Lease No. 21292 to its Southeast corner, said corner also being a point on the West line of State Lease No. 20909 having Coordinates of X = 2,761,708.00 and Y = 212,078.19; thence South 2,404.50 feet along the West line of said State Lease No. 20909 to its Southwest corner having Coordinates of X = 2,761,708.00 and Y = 209,673.69; thence along said State Lease No. 20909 the following courses: Northeasterly 458.99 on a straight line to a point having Coordinates of X = 2,762,108.41 and Y = 209,898.06; thence Northeasterly 252.08 feet on a straight line to a point having Coordinates of X = 2,762,292.44 and Y = 210,070.33; thence Southeasterly 1,279.88 feet on a straight line to the Southeast corner of said State Lease No. 20909, said corner also being a point on the East line of said Block 75, Main Pass Area, Revised having Coordinates of X = 2,763,508.00 and Y = 209,669.71; thence South 5,337.68 feet along the East line of said Block 75, Main Pass Area, Revised to the point of beginning, containing approximately **1,510.07 acres**, all as more particularly outlined on a plat on file in the Office of Mineral Resources, Department of Natural Resources. All bearings, distances and coordinates are based on Louisiana Coordinate System of 1927, (North or South Zone).

NOTE: The above description of the Tract nominated for lease has been provided and corrected, where required, exclusively by the nomination party. Any mineral lease selected from this Tract and awarded by the Louisiana State Mineral and Energy Board shall be without warranty of any kind, either express, implied, or statutory, including, but not limited to, the implied warranties of merchantability and fitness for a particular purpose. Should the mineral lease awarded by the Louisiana State Mineral and Energy Board be subsequently modified, cancelled or abrogated due to the existence of conflicting leases, operating agreements, private claims or other future obligations or conditions which may affect all or any portion of the leased Tract, it shall not relieve the Lessee of the obligation to pay any bonus due thereon to the Louisiana State Mineral and Energy Board, nor shall the Louisiana State Mineral and Energy Board be obligated to refund any consideration paid by the Lessor prior to such modification, cancellation, or abrogation, including, but not limited to, bonuses, rentals and royalties.

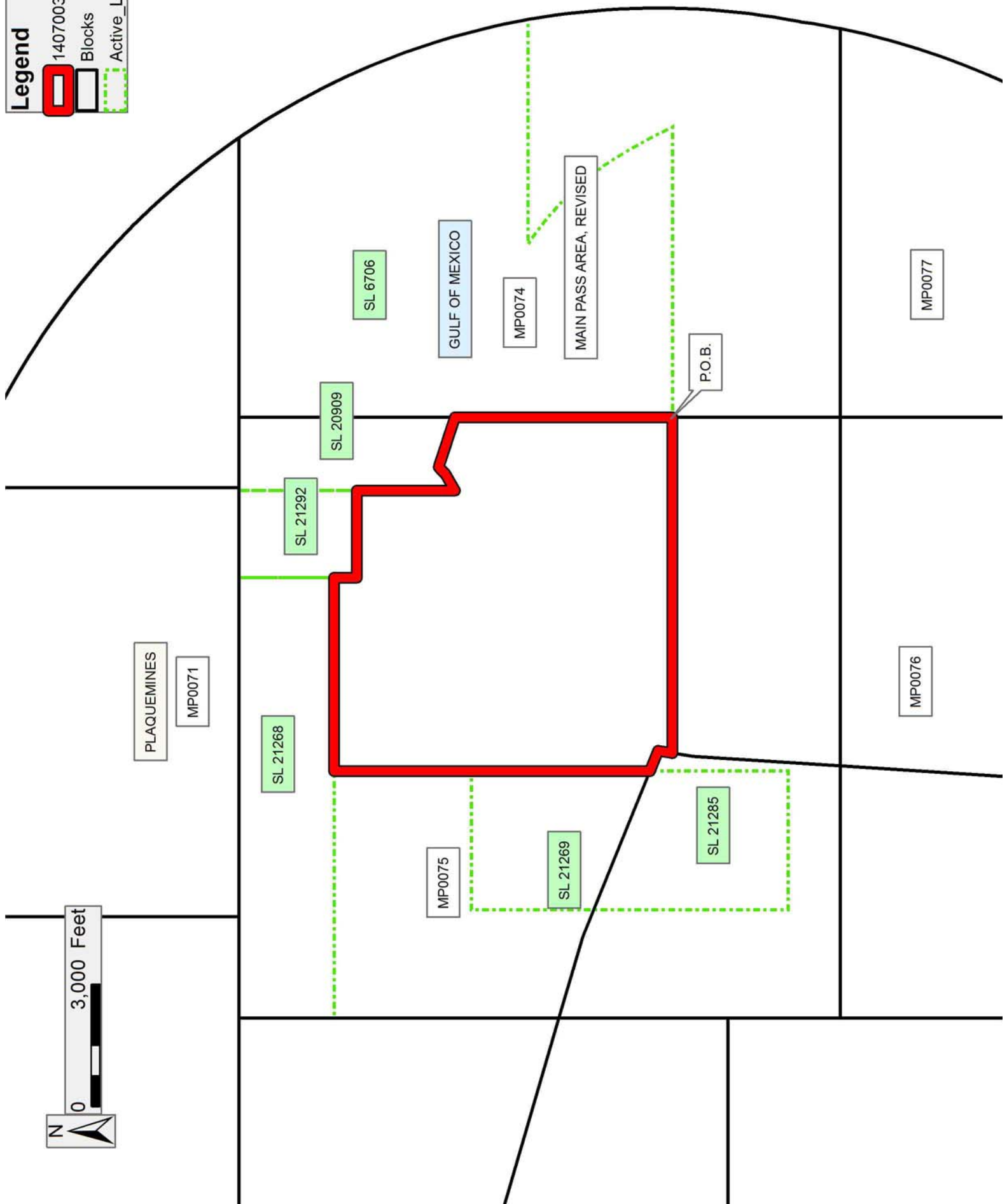
NOTE: The State of Louisiana does hereby reserve, and this lease shall be subject to, the imprescriptible right of surface use in the nature of a servitude in favor of the Department of Natural Resources, including its Offices and Commissions, for the sole purpose of implementing, constructing, servicing and maintaining approved coastal zone management and/or restoration projects. Utilization of any and all rights derived under this lease by the mineral lessee, its agents, successors or assigns, shall not interfere with nor hinder the reasonable surface use by the Department of Natural Resources, its Offices or Commissions, as herein above reserved.

Applicant: HAROLD J. ANDERSON, INC.

Bidder	Cash Payment	Price/Acre	Rental	Oil	Gas	Other

**Legend**

-  14070035
-  Blocks
-  Active\_Leases



**TRACT 43984 - Portion of Blocks 74, and 77, Main Pass Area, Revised, Plaquemines Parish, Louisiana**

The beds and bottoms of all water bodies belonging to the State of Louisiana located in Blocks 74, and 77, Main Pass Area, Revised, together with any present lands formed by accretion to the shoreline or islands formed therein, located in Plaquemines Parish, Louisiana, owned by and not presently under mineral lease as of July 9, 2014, from the State of Louisiana, the geographical area of which is more fully described as follows: Beginning at the Southwest corner of State Lease No. 6706 having Coordinates of X = 2,763,508.00 and Y = 204,332.03; thence along the boundary of said State Lease No. 6706 the following courses: East 7,130.10 feet to a point having Coordinates of X = 2,770,638.10 and Y = 204,332.03; Northwesterly along an arc with a radius of 10,875.00 feet and a center of X = 2,760,939.12 and Y = 199,413.14 to a point having Coordinates of X = 2,767,766.23 and Y = 207,878.14; and East 5,516.81 feet to a point on the Three Mile Line, as decreed by the Supreme Court of the United States, as determined by a Special Master appointed therein, in litigation styled *United States v. State of Louisiana et al No. 9 Original*, in 1975, having Coordinates of X = 2,773,283.04 and Y = 207,878.14; thence along the boundary of said Three Mile Line the following courses: Southwesterly along an arc with a radius of 18,240.60 feet and a center of X = 2,755,325 and Y = 204,680 to a point having Coordinates of X = 2,773,229 and Y = 201,192; Southwesterly along an arc with a radius of 18,240.60 feet and a center of X = 2,755,178 and Y = 203,815 to a point having Coordinates of X = 2,773,059.63 and Y = 200,214.00; and Southwesterly along an arc with a radius of 18,240.60 feet and a center of X = 2,755,178 and Y = 203,815 to a point having Coordinates of X = 2,772,235.71 and Y = 197,353.05; thence West 5,737.71 feet to a point on the East line of State Lease No. 21076 having Coordinates of X = 2,766,498.00 and Y = 197,353.05; thence North 1,457.50 feet along the East line of said State Lease No. 21076 to its Northeast corner having Coordinates of X = 2,766,498.00 and Y = 198,810.55; thence West 2,990.00 feet along the North line of said State Lease No. 21076 to its Northwest corner, said corner also being a point on the West line of Block 77, Main Pass Area, Revised, having Coordinates of X = 2,763,508.00 and Y = 198,810.55; thence North 00 degrees 00 minutes 02 seconds West 1,403.45 feet along the West line of said Block 77, Main Pass Area, Revised to its Northwest corner, also being the Southwest corner of Block 74, Main Pass Area, Revised having Coordinates of X = 2,763,507.99 and Y = 200,214.00; thence North 00 degrees 00 minutes 01 seconds East 4,118.03 feet along the West line of said Block 74, Main Pass Area, Revised to the point of beginning, containing approximately **1,766.93 acres, LESS AND EXCEPT** that portion thereof, if any, lying seaward of the line three nautical miles from the coast line of Louisiana, as said three mile line has been decreed by the Supreme Court of the United States, as determined by a Special Master appointed therein, in litigation styled **United States v. State of Louisiana et al No. 9 Original**, in 1975, all as more particularly outlined on a plat in the Office of Mineral Resources, Department of Natural Resources. All bearings, distances and coordinates are based on the Louisiana Coordinate System of 1927, (South Zone).

NOTE: The above description of the Tract nominated for lease has been provided and corrected, where required, exclusively by the nomination party. Any mineral lease selected from this Tract and awarded by the Louisiana State Mineral and Energy Board shall be without warranty of any kind, either express, implied, or statutory, including, but not limited to, the implied warranties of merchantability and fitness for a particular purpose. Should the mineral lease awarded by the Louisiana State Mineral and Energy Board be subsequently modified, cancelled or abrogated due to the existence of conflicting leases, operating agreements, private claims or other future obligations or conditions which may affect all or any portion of the leased Tract, it shall not relieve the Lessee of the obligation to pay any bonus due thereon to the Louisiana State Mineral and Energy Board, nor shall the Louisiana State Mineral and Energy Board be obligated to refund any consideration paid by the Lessor prior to such modification, cancellation, or abrogation, including, but not limited to, bonuses, rentals and royalties.

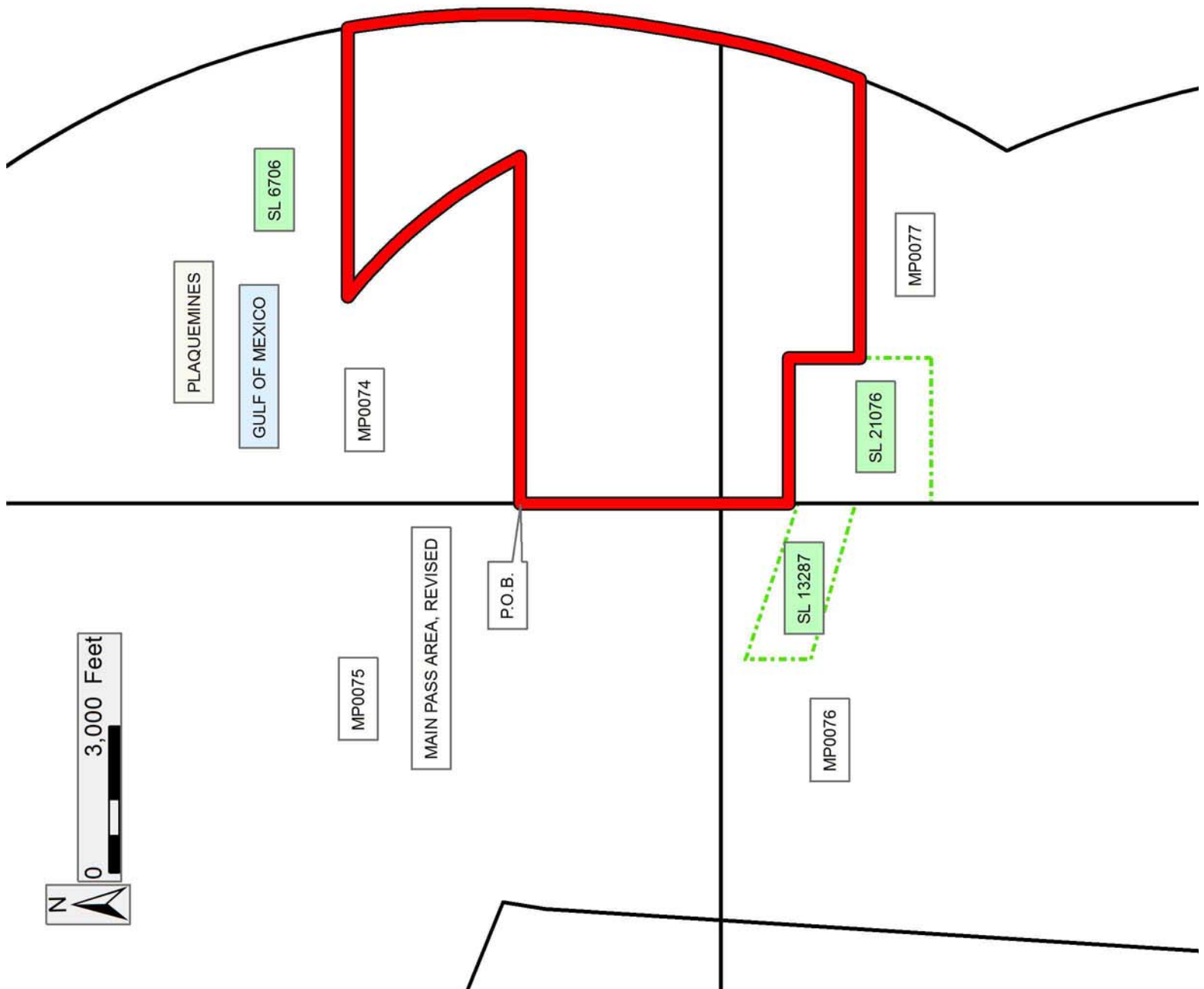
NOTE: The State of Louisiana does hereby reserve, and this lease shall be subject to, the imprescriptible right of surface use in the nature of a servitude in favor of the Department of Natural Resources, including its Offices and Commissions, for the sole purpose of implementing, constructing, servicing and maintaining approved coastal zone management and/or restoration projects. Utilization of any and all rights derived under this lease by the mineral lessee, its agents, successors or assigns, shall not interfere with nor hinder the reasonable surface use by the Department of Natural Resources, its Offices or Commissions, as herein above reserved.

Applicant: HAROLD J. ANDERSON, INC.

Bidder	Cash Payment	Price/Acre	Rental	Oil	Gas	Other

**Legend**

-  14070037
-  Blocks
-  Active\_Leases



**TRACT 43985 - Portion of Blocks 75, and 76, Main Pass Area, Revised, Plaquemines Parish, Louisiana**

The beds and bottoms of all water bodies belonging to the State of Louisiana located in Blocks 75, and 76, Main Pass Area, Revised, together with any present lands formed by accretion to the shoreline or islands formed therein, located in Plaquemines Parish, Louisiana, owned by and not presently under mineral lease as of July 9, 2014, from the State of Louisiana, the geographical area of which is more fully described as follows: Beginning at a point on the East line of Block 75, Main Pass Area, Revised, said corner also being the Southwest corner of State Lease No. 6706 having Coordinates of X = 2,763,508.00 and Y = 204,332.03; thence Southerly 4,118.03 feet along the East line of said Block 75, Main Pass Area, Revised, to its Southeast corner, said corner also being the Northeast corner of Block 76, Main Pass Area, Revised, having Coordinates of X = 2,763,507.99 and Y = 200,214.00; thence Southerly 1,403.45 feet along the East line of said Block 76, Main Pass Area, Revised to a corner, said corner also being the Northwest corner of State Lease No. 21076 having Coordinates of X = 2,763,508.00 and Y = 198,810.55; thence South 184.66 feet along the West line of said State Lease No. 21076 to a corner, said corner also being the Northeast corner of State Lease No. 13287 having Coordinates of X = 2,763,508.00 and Y = 198,625.89; thence North 71 degrees 21 minutes 02 seconds West 3,377.34 feet along the North line of said State Lease No. 13287 to its Northwest corner having Coordinates of X = 2,760,307.99 and Y = 199,705.88; thence South 00 degrees 00 minutes 01 seconds East 1,337.48 feet along the West line of said State Lease No. 13287 to its Southwest corner, said corner also being the Northwest corner of State Lease No. 15042 having Coordinates of X = 2,760,308.00 and Y = 198,368.40; thence South 3,442.38 feet along the West line of said State Lease No. 15042 to its Southwest corner, said corner also being the Northwest corner of State Lease No. 21296 having Coordinates of X = 2,760,308.00 and Y = 194,946.02; thence South 729.89 feet along the West line of said State Lease No. 21296 to a point having Coordinates of X = 2,760,308.00 and Y = 194,216.13; thence North 89 degrees 53 minutes 58 seconds West 5,741.65 feet to a point on the Louisiana Coastline, as decreed by the Supreme Court of the United States, as determined by a Special Master appointed therein, in litigation styled *United States v. State of Louisiana et al No. 9 Original*, in 1975, having Coordinates of X = 2,754,566.36 and Y = 194,226.21; thence along the boundary of said Coastline the following courses: Northeasterly 5,999.96 feet on a straight line to a point, said corner also being the Northwest corner of said Block 76, Main Pass Area, Revised, and the Southwest corner of said Block 75, Main Pass Area, Revised, having Coordinates of X = 2,754,948.30 and Y = 200,214.00; thence Northeasterly 3,608.32 feet on a straight line to a point having Coordinates of X = 2,755,178.00 and Y = 203,815.00; thence Northeasterly 524.44 feet on a straight line to a point having Coordinates of X = 2,755,265.86 and Y = 204,332.03; thence East 8,242.14 feet to the point of beginning, containing approximately **1,637.14 acres**, all as more particularly outlined on a plat on file in the Office of Mineral Resources, Department of Natural Resources. All bearings, distances and

coordinates are based on Louisiana Coordinate System of 1927, (North or South Zone).

NOTE: The above description of the Tract nominated for lease has been provided and corrected, where required, exclusively by the nomination party. Any mineral lease selected from this Tract and awarded by the Louisiana State Mineral and Energy Board shall be without warranty of any kind, either express, implied, or statutory, including, but not limited to, the implied warranties of merchantability and fitness for a particular purpose. Should the mineral lease awarded by the Louisiana State Mineral and Energy Board be subsequently modified, cancelled or abrogated due to the existence of conflicting leases, operating agreements, private claims or other future obligations or conditions which may affect all or any portion of the leased Tract, it shall not relieve the Lessee of the obligation to pay any bonus due thereon to the Louisiana State Mineral and Energy Board, nor shall the Louisiana State Mineral and Energy Board be obligated to refund any consideration paid by the Lessor prior to such modification, cancellation, or abrogation, including, but not limited to, bonuses, rentals and royalties.

NOTE: The State of Louisiana does hereby reserve, and this lease shall be subject to, the imprescriptible right of surface use in the nature of a servitude in favor of the Department of Natural Resources, including its Offices and Commissions, for the sole purpose of implementing, constructing, servicing and maintaining approved coastal zone management and/or restoration projects. Utilization of any and all rights derived under this lease by the mineral lessee, its agents, successors or assigns, shall not interfere with nor hinder the reasonable surface use by the Department of Natural Resources, its Offices or Commissions, as herein above reserved.

Applicant: HAROLD J. ANDERSON, INC.

Bidder	Cash Payment	Price/Acre	Rental	Oil	Gas	Other



**Legend**

-  14070036
-  Blocks
-  Active\_Leases

