

**TRACT 43986 - Lasalle Parish, Louisiana**

All of the lands now or formerly constituting the beds and bottoms of all water bodies of every nature and description as to which title is vested in the State of Louisiana, together with all islands arising therein and other lands formed by accretion or by reliction, where allowed by law, excepting tax adjudicated lands, and not presently under mineral lease on July 9, 2014, situated in Lasalle Parish, Louisiana, and more particularly described as follows: Beginning at a point having Coordinates of X = 2,212,633.28 and Y = 305,301.50; thence Northerly approximately 3,874 feet to a point on the south boundary of State Lease No. 502, as amended; thence along the boundary of said State Lease No. 502 the following courses: Easterly approximately 2,637 feet and Northerly approximately 1,371 feet to the Southwest corner of Southern retained tract of State Lease No. 1461, as amended; thence Easterly approximately 1,521 feet and Northerly 1,241 feet to its Northeast corner; thence Easterly approximately 6,431 feet to a point having Coordinates of X = 2,132,169.63 and Y = 311,877.93; thence South 00 degrees 28 minutes 48 seconds East 6,487.68 feet to a point having Coordinates of X = 2,132,223.97 and Y = 305,390.48; thence Westerly approximately 4,005 feet to the Southeast corner of the Eastern retained tract of State Lease No. 1462, as amended; thence along the boundary of said State Lease No. 1462 the following courses: Northerly approximately 1,288 feet, Westerly approximately 1,308 feet and Southerly approximately 1,308 feet to its Southwest corner; thence Westerly approximately 5,288 feet to the point of beginning, **LESS AND EXCEPT** any portion of State Lease No. 502, 1461 and 1462 that falls within the above described tract, containing approximately **1060 acres**, all as more particularly outlined on a plat on file in the Office of Mineral Resources, Department of Natural Resources. All bearings, distances and coordinates are based on Louisiana Coordinate System of 1927, (North or South Zone), where applicable.

NOTE: The above description of the Tract nominated for lease has been provided and corrected, where required, exclusively by the nomination party. Any mineral lease selected from this Tract and awarded by the Louisiana State Mineral and Energy Board shall be without warranty of any kind, either express, implied, or statutory, including, but not limited to, the implied warranties of merchantability and fitness for a particular purpose. Should the mineral lease awarded by the Louisiana State Mineral and Energy Board be subsequently modified, cancelled or abrogated due to the existence of conflicting leases, operating agreements, private claims or other future obligations or conditions which may affect all or any portion of the leased Tract, it shall not relieve the Lessee of the obligation to pay any bonus due thereon to the Louisiana State Mineral and Energy Board, nor shall the Louisiana State Mineral and Energy Board be obligated to refund any consideration paid by the Lessor prior to such modification, cancellation, or abrogation, including, but not limited to, bonuses, rentals and royalties.

NOTE: The Department of Wildlife and Fisheries, as part of its overall wildlife management plan in the area, initiates an annual drawdown of

water in Catahoula Lake which may affect operations for mineral development by State mineral lessees in Catahoula Lake. Accordingly, any mineral lessee of the State in Catahoula Lake should check with the Department of Wildlife and Fisheries for the water drawdown dates before initiating any operations which may be affected by same.

Applicant: LESLIE M. COOPER

Bidder	Cash Payment	Price/Acre	Rental	Oil	Gas	Other

**Legend**

14070001



Active\_Leases



LA SALLE

CATAHOULA LAKE

SL 1461

SL 502

SL 1462

T6N - R4E

P.O.B.

**TRACT 43987 - Catahoula and Concordia Parishes, Louisiana**

All of the lands now or formerly constituting the beds and bottoms of all water bodies of every nature and description as to which title is vested in the State of Louisiana, together with all islands arising therein and other lands formed by accretion or by reliction, where allowed by law, excepting tax adjudicated lands, and not presently under mineral lease on July 9, 2014, situated in Catahoula and Concordia Parishes, Louisiana, and more particularly described as follows: Beginning at a point having Coordinates of X = 2,201,646.73 and Y = 263,387.54; thence South 88 degrees 33 minutes 19 seconds East 16,144.71 feet to a point having Coordinates of X = 2,217,786.31 and Y = 262,980.46; thence Southerly to the most Northern Northeast corner of State Lease No. 4481, as amended; thence along the boundary of said State Lease No. 4481 the following courses: Westerly, Southerly, Westerly, Southerly, Westerly, Southerly and Easterly to its Southeast corner; thence Southerly to a point having Coordinates of X = 2,217,527.85 and Y = 246,891.88; thence North 88 degrees 40 minutes 07 seconds West 15,817.78 feet to a point having Coordinates of X = 2,201,714.34 and Y = 247,259.42; thence North 00 degrees 14 minutes 25 seconds West 16,128.26 feet to the point of beginning, **LESS AND EXCEPT** that portion of State Lease No. 4481, as amended, that may be situated within the above described tract; and **LESS AND EXCEPT** that portion of State Lease No. 20426 situated within the above described tract, being more fully described as follows: Commencing at a point being the point of beginning of the above described nominated tract having Coordinates of X = 2,201,646.73 and Y = 263,387.54; thence South 70 degrees 57 minutes 24 seconds East 12,472.68 feet to a point being the point of beginning of said State Lease No. 20426 having Coordinates of X = 2,213,436.80 and Y = 259,317.90; thence East 1,500.00 feet to a point having Coordinates of X = 2,214,936.80 and Y = 259,317.90; thence South 1,500.00 feet to a point having Coordinates of X = 2,214,936.80 and Y = 257,817.90; thence West 1,500.00 feet to a point having Coordinates of X = 2,213,436.80 and Y = 257,817.90; and North 1,500.00 feet to the point of beginning, the nominated tract contains approximately **177 acres**, all as more particularly outlined on a plat on file in the Office of Mineral Resources, Department of Natural Resources. All bearings, distances and coordinates are based on Louisiana Coordinate System of 1927, (North or South Zone), where applicable.

NOTE: The above description of the Tract nominated for lease has been provided and corrected, where required, exclusively by the nomination party. Any mineral lease selected from this Tract and awarded by the Louisiana State Mineral and Energy Board shall be without warranty of any kind, either express, implied, or statutory, including, but not limited to, the implied warranties of merchantability and fitness for a particular purpose. Should the mineral lease awarded by the Louisiana State Mineral and Energy Board be subsequently modified, cancelled or abrogated due to the existence of conflicting leases, operating agreements, private claims or other future obligations or conditions which may affect all or any portion of the leased Tract, it shall not relieve the Lessee of the

obligation to pay any bonus due thereon to the Louisiana State Mineral and Energy Board, nor shall the Louisiana State Mineral and Energy Board be obligated to refund any consideration paid by the Lessor prior to such modification, cancellation, or abrogation, including, but not limited to, bonuses, rentals and royalties.

Applicant: THEOPHILUS OIL, GAS & LAND SERVICES, LLC

Bidder	Cash Payment	Price/Acre	Rental	Oil	Gas	Other

**Legend**

14070028

Active\_Leases

Counties



CATAHOULA

T5N - R6E

BLACK RIVER

CONCORDIA

T4N - R7E

SL 4481

SL 20426

3,000 Feet

P.O.B.



**TRACT 43988 - Catahoula and Concordia Parishes, Louisiana**

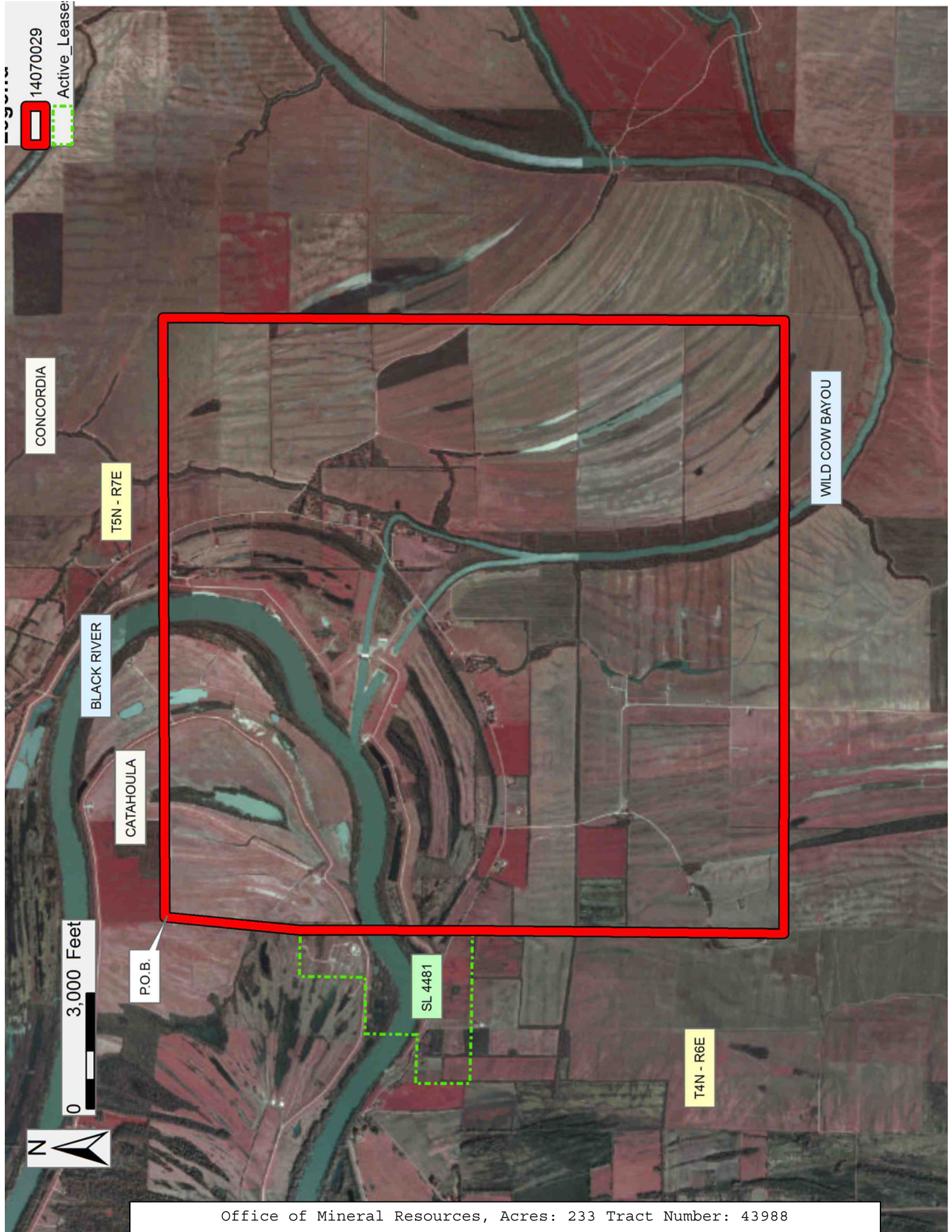
All of the lands now or formerly constituting the beds and bottoms of all water bodies of every nature and description as to which title is vested in the State of Louisiana, together with all islands arising therein and other lands formed by accretion or by reliction, where allowed by law, excepting tax adjudicated lands, and not presently under mineral lease on July 9, 2014, situated in Catahoula and Concordia Parishes, Louisiana, and more particularly described as follows: Beginning at a point having Coordinates of X = 2,217,786.31 and Y = 262,980.46; thence North 89 degrees 12 minutes 44 seconds East 15,577.71 feet to a point having Coordinates of X = 2,233,362.55 and Y = 263,194.65; thence South 00 degrees 23 minutes 13 seconds East 16,153.19 feet to a point having Coordinates of X = 2,233,471.64 and Y = 247,041.83; thence South 89 degrees 27 minutes 40 seconds West 15,944.50 feet to a point having Coordinates of X = 2,217,527.85 and Y = 246,891.88; thence Northerly to the Southeast corner of State Lease No. 4481, as amended; thence Northerly along the East boundary of said State Lease No. 4481 to its most Northerly Northeast corner; thence Northerly to the point of beginning, **LESS AND EXCEPT** that portion of State Lease No. 4481, as amended, that may be situated within the above described tract, containing approximately **233 acres**, all as more particularly outlined on a plat on file in the Office of Mineral Resources, Department of Natural Resources. All bearings, distances and coordinates are based on Louisiana Coordinate System of 1927, (North or South Zone), where applicable.

NOTE: The above description of the Tract nominated for lease has been provided and corrected, where required, exclusively by the nomination party. Any mineral lease selected from this Tract and awarded by the Louisiana State Mineral and Energy Board shall be without warranty of any kind, either express, implied, or statutory, including, but not limited to, the implied warranties of merchantability and fitness for a particular purpose. Should the mineral lease awarded by the Louisiana State Mineral and Energy Board be subsequently modified, cancelled or abrogated due to the existence of conflicting leases, operating agreements, private claims or other future obligations or conditions which may affect all or any portion of the leased Tract, it shall not relieve the Lessee of the obligation to pay any bonus due thereon to the Louisiana State Mineral and Energy Board, nor shall the Louisiana State Mineral and Energy Board be obligated to refund any consideration paid by the Lessor prior to such modification, cancellation, or abrogation, including, but not limited to, bonuses, rentals and royalties.

Applicant: THEOPHILUS OIL, GAS & LAND SERVICES, LLC

Bidder	Cash Payment	Price/Acre	Rental	Oil	Gas	Other





CONCORDIA

WILD COW BAYOU

BLACK RIVER

CATAHOULA

T5N - R7E

T4N - R6E

SL 4481

P.O.B.

0 3,000 Feet



14070029  
Active Lease

**TRACT 43989 - Concordia Parish, Louisiana**

All of the lands now or formerly constituting the beds and bottoms of all water bodies of every nature and description as to which title is vested in the State of Louisiana, together with all islands arising therein and other lands formed by accretion or by reliction, where allowed by law, excepting tax adjudicated lands, and not presently under mineral lease on July 9, 2014, situated in Concordia Parish, Louisiana, and more particularly described as follows: Beginning at a point having Coordinates of X = 2,233,362.55 and Y = 263,194.65; thence North 89 degrees 28 minutes 30 seconds East 15,862.85 feet to a point having Coordinates of X = 2,249,224.73 and Y = 263,340.04; thence South 00 degrees 14 minutes 57 seconds East 16,511.53 feet to a point having Coordinates of X = 2,249,296.56 and Y = 246,828.67; thence North 89 degrees 13 minutes 42 seconds West 15,826.36 feet to a point having Coordinates of X = 2,233,471.64 and Y = 247,041.83; thence North 00 degrees 23 minutes 13 seconds West 16,153.19 feet to the point of beginning, containing approximately **204 acres**, all as more particularly outlined on a plat on file in the Office of Mineral Resources, Department of Natural Resources. All bearings, distances and coordinates are based on Louisiana Coordinate System of 1927, (North or South Zone), where applicable.

NOTE: The above description of the Tract nominated for lease has been provided and corrected, where required, exclusively by the nomination party. Any mineral lease selected from this Tract and awarded by the Louisiana State Mineral and Energy Board shall be without warranty of any kind, either express, implied, or statutory, including, but not limited to, the implied warranties of merchantability and fitness for a particular purpose. Should the mineral lease awarded by the Louisiana State Mineral and Energy Board be subsequently modified, cancelled or abrogated due to the existence of conflicting leases, operating agreements, private claims or other future obligations or conditions which may affect all or any portion of the leased Tract, it shall not relieve the Lessee of the obligation to pay any bonus due thereon to the Louisiana State Mineral and Energy Board, nor shall the Louisiana State Mineral and Energy Board be obligated to refund any consideration paid by the Lessor prior to such modification, cancellation, or abrogation, including, but not limited to, bonuses, rentals and royalties.

NOTE: A portion of this tract is located on or adjacent to a Louisiana designated Natural and Scenic River. The applicant must obtain authorization from the Louisiana Department of Wildlife and Fisheries, Scenic Rivers Program prior to initiating any activities within or adjacent to the river, including, but not limited to, crossings by roads and pipelines, well sites, production facilities and water withdrawals.

Applicant: THEOPHILUS OIL, GAS & LAND SERVICES, LLC

Bidder	Cash Payment	Price/Acre	Rental	Oil	Gas	Other

**Legend**

14070030



WYCHES BAYOU

BAYOU COCODRIE

BAYOU COCODRIE

CONCORDIA

T5N - R7E

T4N - R7E

3,000 Feet



P.O.B.

WILD COW BAYOU

**TRACT 43990 - Avoyelles Parish, Louisiana**

All of the lands now or formerly constituting the beds and bottoms of all water bodies of every nature and description as to which title is vested in the State of Louisiana, together with all islands arising therein and other lands formed by accretion or by reliction, where allowed by law, excepting tax adjudicated lands, and not presently under mineral lease on July 9, 2014, situated in Avoyelles Parish, Louisiana, and more particularly described as follows: Beginning at a point having Coordinates of X = 1,719,000.00 and Y = 820,173.03; Thence East 5,000.00 feet to the West line of State Lease no. 17880 having Coordinates of X = 1,724,000.00 and Y = 820,173.03; thence South 4,634.03 feet along the West line of said State Lease No. 17880 to its Southwest corner, also being a corner on the West side of State Lease No. 20592 having Coordinates of X = 1,724,000.00 and Y = 815,536.00; thence West 5,000.00 feet to a point having Coordinates of X = 1,719,000.00 and Y = 815,536.00; thence North 4,634.03 feet to the point of beginning, containing **7.15 acres**, all as more particularly outlined on a plat on file in the Office of Mineral Resources, Department of Natural Resources. All bearings, distances and coordinates are based on Louisiana Coordinate System of 1927, (North or South Zone), where applicable.

NOTE: The above description of the Tract nominated for lease has been provided and corrected, where required, exclusively by the nomination party. Any mineral lease selected from this Tract and awarded by the Louisiana State Mineral and Energy Board shall be without warranty of any kind, either express, implied, or statutory, including, but not limited to, the implied warranties of merchantability and fitness for a particular purpose. Should the mineral lease awarded by the Louisiana State Mineral and Energy Board be subsequently modified, cancelled or abrogated due to the existence of conflicting leases, operating agreements, private claims or other future obligations or conditions which may affect all or any portion of the leased Tract, it shall not relieve the Lessee of the obligation to pay any bonus due thereon to the Louisiana State Mineral and Energy Board, nor shall the Louisiana State Mineral and Energy Board be obligated to refund any consideration paid by the Lessor prior to such modification, cancellation, or abrogation, including, but not limited to, bonuses, rentals and royalties.

Bidder	Cash Payment	Price/Acre	Rental	Oil	Gas	Other

Applicant: PETRO-GUARD PRODUCTION

**Legend**

14070039



Active\_Leases



2,000 Feet



T1S - R3E

SL 17880

SL 20592

AVOYELLES

BAYOU BOEUF

P.O.B.

T2S - R2E

**TRACT 43991 - St. Martin Parish, Louisiana**

All of the lands now or formerly constituting the beds and bottoms of all water bodies of every nature and description as to which title is vested in the State of Louisiana, together with all islands arising therein and other lands formed by accretion or by reliction, where allowed by law, excepting tax adjudicated lands, and not presently under mineral lease on July 9, 2014, situated in St. Martin Parish, Louisiana, and more particularly described as follows: Beginning at a point having Coordinates of X = 1,926,855.00 and Y = 556,449.00; thence East 5,536.00 feet to a point having Coordinates of X = 1,932,391.00 and Y = 556,449.00; thence South 2,860.00 feet to the Northwest Corner of State Lease No.20913 having Coordinates of X = 1,932,391.00 and Y = 553,589.00; thence West 5,536.00 feet to a point having Coordinates of X = 1,926,855.00 and Y = 553,589.00; thence North 2,860.00 feet to the point of beginning, (This tract includes only waterbottoms claimed and owned by the state and specifically excludes any land which the state may claim or own and to which the mineral rights are vested in the state), containing approximately **308 acres**, all as more particularly outlined on a plat on file in the Office of Mineral Resources, Department of Natural Resources. All bearings, distances and coordinates are based on Louisiana Coordinate System of 1927, (North or South Zone), where applicable.

NOTE: The above description of the Tract nominated for lease has been provided and corrected, where required, exclusively by the nomination party. Any mineral lease selected from this Tract and awarded by the Louisiana State Mineral and Energy Board shall be without warranty of any kind, either express, implied, or statutory, including, but not limited to, the implied warranties of merchantability and fitness for a particular purpose. Should the mineral lease awarded by the Louisiana State Mineral and Energy Board be subsequently modified, cancelled or abrogated due to the existence of conflicting leases, operating agreements, private claims or other future obligations or conditions which may affect all or any portion of the leased Tract, it shall not relieve the Lessee of the obligation to pay any bonus due thereon to the Louisiana State Mineral and Energy Board, nor shall the Louisiana State Mineral and Energy Board be obligated to refund any consideration paid by the Lessor prior to such modification, cancellation, or abrogation, including, but not limited to, bonuses, rentals and royalties.

NOTE: This acreage is entirely within the boundary of the Atchafalaya Basin Legal Area.



Applicant: PEAK EXPLORATION

Bidder	Cash Payment	Price/Acre	Rental	Oil	Gas	Other

Legend

14070002



Active\_Leases



2,000 Feet

0

ST MARTIN

LAKE MONGOULOIS

SL 20913

P.O.B.

T10S - R9E

**TRACT 43992 - St. Martin Parish, Louisiana**

All of the lands now or formerly constituting the beds and bottoms of all water bodies of every nature and description as to which title is vested in the State of Louisiana, together with all islands arising therein and other lands formed by accretion or by reliction, where allowed by law, excepting tax adjudicated lands, and not presently under mineral lease on July 9, 2014, situated in St. Martin Parish, Louisiana, and more particularly described as follows: Beginning at a point having Coordinates of X = 1,932,391.00 and Y = 556,449.00; thence East 5,332.00 feet to the Northwest corner of State Lease No. 20912 having Coordinates of X = 1,937,723.00 and Y = 556,449.00; thence South 2,860.00 feet along the West boundary of said State Lease No. 20912 to the Northwest Corner of State Lease No.20913 having Coordinates of X = 1,937,723.00 and Y = 553,589.00; thence West 5,332.00 feet along the North boundary of State Lease No. 20913 to its Northwest Corner having Coordinates of X = 1,932,391.00 and Y = 553,589.00; thence North 2,860.00 feet to the point of beginning, (This tract includes only waterbottoms claimed and owned by the state and specifically excludes any land which the state may claim or own and to which the mineral rights are vested in the state), containing approximately **301 acres**, all as more particularly outlined on a plat on file in the Office of Mineral Resources, Department of Natural Resources. All bearings, distances and coordinates are based on Louisiana Coordinate System of 1927, (North or South Zone), where applicable.

NOTE: The above description of the Tract nominated for lease has been provided and corrected, where required, exclusively by the nomination party. Any mineral lease selected from this Tract and awarded by the Louisiana State Mineral and Energy Board shall be without warranty of any kind, either express, implied, or statutory, including, but not limited to, the implied warranties of merchantability and fitness for a particular purpose. Should the mineral lease awarded by the Louisiana State Mineral and Energy Board be subsequently modified, cancelled or abrogated due to the existence of conflicting leases, operating agreements, private claims or other future obligations or conditions which may affect all or any portion of the leased Tract, it shall not relieve the Lessee of the obligation to pay any bonus due thereon to the Louisiana State Mineral and Energy Board, nor shall the Louisiana State Mineral and Energy Board be obligated to refund any consideration paid by the Lessor prior to such modification, cancellation, or abrogation, including, but not limited to, bonuses, rentals and royalties.

NOTE: This acreage is entirely within the boundary of the Atchafalaya Basin Legal Area.

Applicant: PEAK EXPLORATION

Bidder	Cash Payment	Price/Acre	Rental	Oil	Gas	Other

**Legend**

14070003



Active\_Leases

0 3,000 Feet



T10S - R9E

ST MARTIN

P.O.B.

LAKE MONGOLLOIS

SL 20912

SL 20913

**TRACT 43993 - Portion of Block 10, Breton Sound Area, Plaquemines Parish, Louisiana**

All of the lands now or formerly constituting the beds and bottoms of all water bodies of every nature and description as to which title is vested in the State of Louisiana, together with all islands arising therein and other lands formed by accretion or by reliction, where allowed by law, excepting tax adjudicated lands, and not presently under mineral lease on July 9, 2014, situated in Plaquemines Parish, Louisiana, and more particularly described as follows: Beginning at a point having Coordinates of X = 2,738,600.00 and Y = 351,830.00, said point being the Southeast corner of Block 10, Breton Sound Area; thence West 14,750.00 feet along the South line of said Block 10, Breton Sound Area, to a point having Coordinates of X = 2,723,850.00 and Y = 351,830.00, said point being the southwest corner of said Block 10, Breton Sound Area; thence North 7,375.00 feet along the West line of said Block 10, Breton Sound Area, to a point having Coordinates of X = 2,723,850.00 and Y = 359,205.00; thence East 14,750.00 feet to a point having Coordinates of X = 2,738,600.00 and Y = 359,205.00, said point being on the East line of said Block 10, Breton Sound Area; thence South 7,375.00 feet along said East line of said Block 10, Breton Sound Area, to the point of beginning, containing approximately **2,497.27 acres**, all as more particularly outlined on a plat on file in the Office of Mineral Resources, Department of Natural Resources. All bearings, distances and coordinates are based on Louisiana Coordinate System of 1927, (North or South Zone), where applicable.

NOTE: The above description of the Tract nominated for lease has been provided and corrected, where required, exclusively by the nomination party. Any mineral lease selected from this Tract and awarded by the Louisiana State Mineral and Energy Board shall be without warranty of any kind, either express, implied, or statutory, including, but not limited to, the implied warranties of merchantability and fitness for a particular purpose. Should the mineral lease awarded by the Louisiana State Mineral and Energy Board be subsequently modified, cancelled or abrogated due to the existence of conflicting leases, operating agreements, private claims or other future obligations or conditions which may affect all or any portion of the leased Tract, it shall not relieve the Lessee of the obligation to pay any bonus due thereon to the Louisiana State Mineral and Energy Board, nor shall the Louisiana State Mineral and Energy Board be obligated to refund any consideration paid by the Lessor prior to such modification, cancellation, or abrogation, including, but not limited to, bonuses, rentals and royalties.

NOTE: The State of Louisiana does hereby reserve, and this lease shall be subject to, the imprescriptible right of surface use in the nature of a servitude in favor of the Department of Natural Resources, including its Offices and Commissions, for the sole purpose of implementing, constructing, servicing and maintaining approved coastal zone management and/or restoration projects. Utilization of any and all rights derived under this lease by the mineral lessee, its agents, successors or assigns,

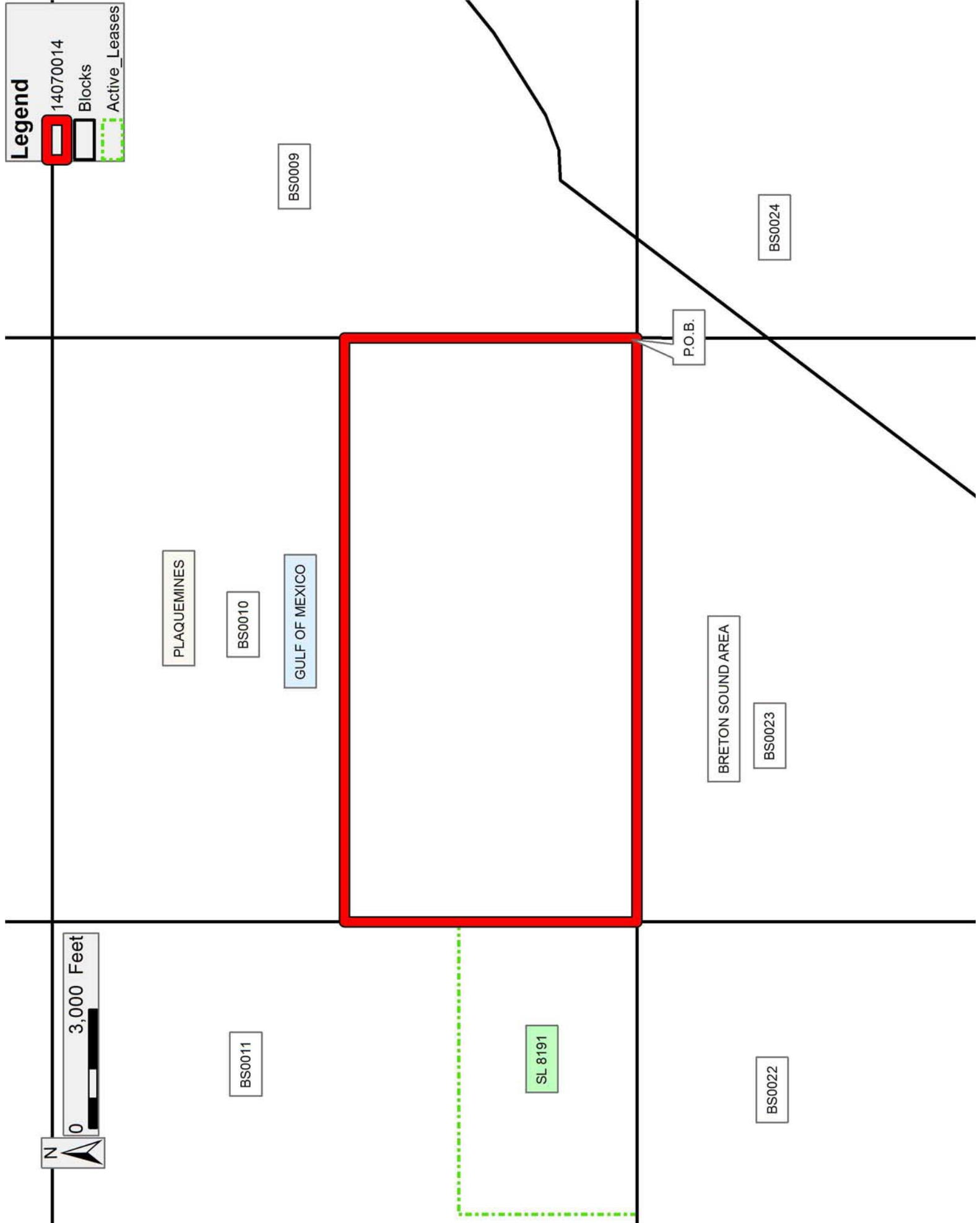
shall not interfere with nor hinder the reasonable surface use by the Department of Natural Resources, its Offices or Commissions, as herein above reserved.

Applicant: ROBERT A. SCHROEDER, INC.

Bidder	Cash Payment	Price/Acre	Rental	Oil	Gas	Other

**Legend**

- 14070014
- Blocks
- Active\_Leases





**TRACT 43994 - Portion of Block 9, Breton Sound Area, Plaquemines Parish, Louisiana**

All of the lands now or formerly constituting the beds and bottoms of all water bodies of every nature and description as to which title is vested in the State of Louisiana, together with all islands arising therein and other lands formed by accretion or by reliction, where allowed by law, excepting tax adjudicated lands, and not presently under mineral lease on July 9, 2014, situated in Plaquemines Parish, Louisiana, and more particularly described as follows: Beginning at a point having Coordinates of X = 2,738,600.00 and Y = 351,830.00, said point being the Southwest corner of Block 9, Breton Sound Area; thence North 7,375.00 feet along the West line of said Block 9, Breton Sound Area, to a point having Coordinates of X = 2,738,600.00 and Y = 359,205.00; thence South 89 degrees 58 minutes 34 seconds East 12,051.41 feet to a point having Coordinates of X = 2,750,651.41 and Y = 359,200.00, said point on the Louisiana Coastline, as decreed by the Supreme Court of the United States, as determined by a Special Master appointed therein, in litigation styled *United States v. State of Louisiana et al No. 9 Original*, in 1975; thence along said Coastline the following courses: Southwesterly to a point having Coordinates of X = 2,749,221 and Y = 357,797; Southwesterly to a point having Coordinates of X = 2,746,309 and Y = 355,438; Southwesterly to a point having Coordinates of X = 2,744,222 and Y = 354,125; Southwesterly to a point having Coordinates of X = 2,743,352 and Y = 353,794; Southwesterly to a point having Coordinates of X = 2,742,583 and Y = 353,754; and Southwesterly to a point having Coordinates of X = 2,741,119.96 and Y = 351,830.00, said point being on the South line of said of Block 9, Breton Sound Area; thence West 2,619.96 feet along said South line of said Block 9, Breton Sound Area, to the point of beginning, containing approximately **1,250.10 acres**, all as more particularly outlined on a plat on file in the Office of Mineral Resources, Department of Natural Resources. All bearings, distances and coordinates are based on Louisiana Coordinate System of 1927, (North or South Zone), where applicable.

NOTE: The above description of the Tract nominated for lease has been provided and corrected, where required, exclusively by the nomination party. Any mineral lease selected from this Tract and awarded by the Louisiana State Mineral and Energy Board shall be without warranty of any kind, either express, implied, or statutory, including, but not limited to, the implied warranties of merchantability and fitness for a particular purpose. Should the mineral lease awarded by the Louisiana State Mineral and Energy Board be subsequently modified, cancelled or abrogated due to the existence of conflicting leases, operating agreements, private claims or other future obligations or conditions which may affect all or any portion of the leased Tract, it shall not relieve the Lessee of the obligation to pay any bonus due thereon to the Louisiana State Mineral and Energy Board, nor shall the Louisiana State Mineral and Energy Board be obligated to refund any consideration paid by the Lessor prior to such

modification, cancellation, or abrogation, including, but not limited to, bonuses, rentals and royalties.

NOTE: The State of Louisiana does hereby reserve, and this lease shall be subject to, the imprescriptible right of surface use in the nature of a servitude in favor of the Department of Natural Resources, including its Offices and Commissions, for the sole purpose of implementing, constructing, servicing and maintaining approved coastal zone management and/or restoration projects. Utilization of any and all rights derived under this lease by the mineral lessee, its agents, successors or assigns, shall not interfere with nor hinder the reasonable surface use by the Department of Natural Resources, its Offices or Commissions, as herein above reserved.

Applicant: ROBERT A. SCHROEDER, INC.

Bidder	Cash Payment	Price/Acre	Rental	Oil	Gas	Other

**Legend**

- 14070015
- Blocks
- Active\_Leases

MP0008

MP0017

PLAQUEMINES

BS0009

GULF OF MEXICO

BS0024

BRETON SOUND AREA

0 3,000 Feet

P.O.B.

BS0010

BS0023

**TRACT 43995 - Portion of Blocks 23, and 24, Breton Sound Area, Plaquemines Parish, Louisiana**

All of the lands now or formerly constituting the beds and bottoms of all water bodies of every nature and description as to which title is vested in the State of Louisiana, together with all islands arising therein and other lands formed by accretion or by reliction, where allowed by law, excepting tax adjudicated lands, and not presently under mineral lease on July 9, 2014, situated in Plaquemines Parish, Louisiana, and more particularly described as follows: Beginning at a point having Coordinates of X = 2,738,600.00 and Y = 351,830.00, said point being the Northwest corner of Block 24, Breton Sound Area; thence East 2,629.96 feet along the North line of said Block 24, Breton Sound Area, to a point having Coordinates of X = 2,741,119.96 and Y = 351,830.00, said point on the Louisiana Coastline, as decreed by the Supreme Court of the United States, as determined by a Special Master appointed therein, in litigation styled *United States v. State of Louisiana et al No. 9 Original*, in 1975; thence along said Coastline the following courses: Southwesterly to a point having Coordinates of X = 2,738,600.00 and Y = 348,516.07, said point being on the line common to Blocks 23 and 24, Breton Sound Area; and Southwesterly to a point having Coordinates of X = 2,735,508.11 and Y = 344,450.00; thence West 11,658.11 feet to a point having Coordinates of X = 2,723,850.00 and Y = 344,450.00, said point being on the West line of said Block 23, Breton Sound Area; thence North 7,380.00 feet along said West line of said Block 23, Breton Sound Area, to a point having Coordinates of X = 2,723,850.00 and Y = 351,830.00, said point being the Northwest corner of said Block 23, Breton Sound Area; thence East 14,750.00 feet along the North line of said Block 23, Breton Sound Area, to the point of beginning, containing approximately **2,450.52 acres**, all as more particularly outlined on a plat on file in the Office of Mineral Resources, Department of Natural Resources. All bearings, distances and coordinates are based on Louisiana Coordinate System of 1927, (North or South Zone), where applicable.

NOTE: The above description of the Tract nominated for lease has been provided and corrected, where required, exclusively by the nomination party. Any mineral lease selected from this Tract and awarded by the Louisiana State Mineral and Energy Board shall be without warranty of any kind, either express, implied, or statutory, including, but not limited to, the implied warranties of merchantability and fitness for a particular purpose. Should the mineral lease awarded by the Louisiana State Mineral and Energy Board be subsequently modified, cancelled or abrogated due to the existence of conflicting leases, operating agreements, private claims or other future obligations or conditions which may affect all or any portion of the leased Tract, it shall not relieve the Lessee of the obligation to pay any bonus due thereon to the Louisiana State Mineral and Energy Board, nor shall the Louisiana State Mineral and Energy Board be obligated to refund any consideration paid by the Lessor prior to such modification, cancellation, or abrogation, including, but not limited to, bonuses, rentals and royalties.

NOTE: The State of Louisiana does hereby reserve, and this lease shall be subject to, the imprescriptible right of surface use in the nature of a servitude in favor of the Department of Natural Resources, including its Offices and Commissions, for the sole purpose of implementing, constructing, servicing and maintaining approved coastal zone management and/or restoration projects. Utilization of any and all rights derived under this lease by the mineral lessee, its agents, successors or assigns, shall not interfere with nor hinder the reasonable surface use by the Department of Natural Resources, its Offices or Commissions, as herein above reserved.

Applicant: ROBERT A. SCHROEDER, INC.

Bidder	Cash Payment	Price/Acre	Rental	Oil	Gas	Other

**Legend**

- 14070013
- Blocks
- Active\_Leases

