

TRACT 43996 - Portion of Blocks 23, and 26, Breton Sound Area, Plaquemines Parish, Louisiana

All of the lands now or formerly constituting the beds and bottoms of all water bodies of every nature and description as to which title is vested in the State of Louisiana, together with all islands arising therein and other lands formed by accretion or by reliction, where allowed by law, excepting tax adjudicated lands, and not presently under mineral lease on July 9, 2014, situated in Plaquemines Parish, Louisiana, and more particularly described as follows: Beginning at a point having Coordinates of X = 2,723,850.00 and Y = 337,080.00, said point being the southwest corner of Block 23, Breton Sound Area; Thence North 7,370.00 feet on and along the West line of said Block 23, Breton Sound Area, to a point having Coordinates of X = 2,723,850.00 and Y = 344,450.00; Thence East 11,658.11 feet to a point having Coordinates of X = 2,735,508.11 and Y = 344,450.00, said point being on the Coastline of Louisiana as defined by the report of the Special Master and set forth in the Judgment Decree in June of 1975 by the Supreme Court of the United States in the litigation styled United States v. State of Louisiana, et al No. 9 Original; Thence on and along said Coastline the following courses and distances, to wit: South 37 degrees 15 minutes 00 seconds West 9,258.77 feet to a point having Coordinates of X = 2,729,903.83 and Y = 337,080.00, said point being on the line common to Blocks 23 and 26, Breton Sound Area; South 37 degrees 15 minutes 00 seconds West 3,718.58 feet to a point having Coordinates of X = 2,727,653.00 and Y = 334,120.00; South 38 degrees 13 minutes 28 seconds West 1,294.56 feet to a point having Coordinates of X = 2,726,852.00 and Y = 333,103.00; South 52 degrees 09 minutes 29 seconds West 3,643.12 feet to a point having Coordinates of X = 2,723,975.00 and Y = 330,868.00; and South 44 degrees 16 minutes 57 seconds West 179.03 feet to a point having Coordinates of X = 2,723,850.00 and Y = 330,739.83, said point being on the West line of said Block 26, Breton Sound Area; Thence North 6,340.17 feet on and along said West line of said Block 26, Breton Sound Area, to the Point of Beginning, containing approximately **1,993.10 acres**, all as more particularly outlined on a plat on file in the Office of Mineral Resources, Department of Natural Resources. All bearings, distances and coordinates are based on Louisiana Coordinate System of 1927, (North or South Zone), where applicable.

NOTE: The above description of the Tract nominated for lease has been provided and corrected, where required, exclusively by the nomination party. Any mineral lease selected from this Tract and awarded by the Louisiana State Mineral and Energy Board shall be without warranty of any kind, either express, implied, or statutory, including, but not limited to, the implied warranties of merchantability and fitness for a particular purpose. Should the mineral lease awarded by the Louisiana State Mineral and Energy Board be subsequently modified, cancelled or abrogated due to the existence of conflicting leases, operating agreements, private claims or other future obligations or conditions which may affect all or any portion of the leased Tract, it shall not relieve the Lessee of the obligation to pay any bonus due thereon to the Louisiana State Mineral and

Energy Board, nor shall the Louisiana State Mineral and Energy Board be obligated to refund any consideration paid by the Lessor prior to such modification, cancellation, or abrogation, including, but not limited to, bonuses, rentals and royalties.

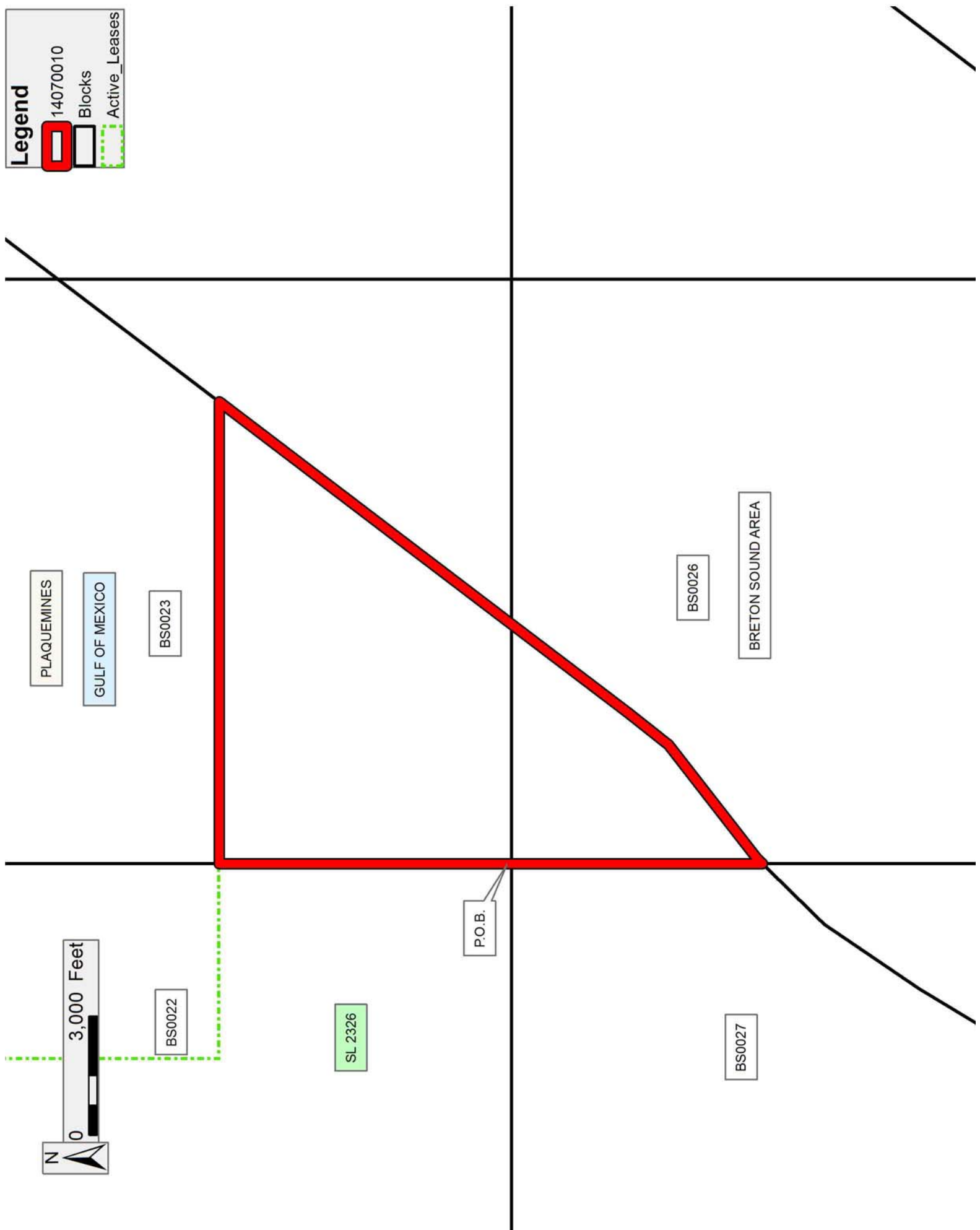
NOTE: The State of Louisiana does hereby reserve, and this lease shall be subject to, the imprescriptible right of surface use in the nature of a servitude in favor of the Department of Natural Resources, including its Offices and Commissions, for the sole purpose of implementing, constructing, servicing and maintaining approved coastal zone management and/or restoration projects. Utilization of any and all rights derived under this lease by the mineral lessee, its agents, successors or assigns, shall not interfere with nor hinder the reasonable surface use by the Department of Natural Resources, its Offices or Commissions, as herein above reserved.

Applicant: ROBERT A. SCHROEDER, INC.

Bidder	Cash Payment	Price/Acre	Rental	Oil	Gas	Other

Legend

- 14070010
- Blocks
- Active_Leases



TRACT 43997 - Portion of Blocks 75, and 76, Main Pass Area, Revised, Blocks 1, and 2, South Pass Area, Plaquemines Parish, Louisiana

All of the lands now or formerly constituting the beds and bottoms of all water bodies of every nature and description as to which title is vested in the State of Louisiana, together with all islands arising therein and other lands formed by accretion or by reliction, where allowed by law, excepting tax adjudicated lands, and not presently under mineral lease on July 9, 2014, situated in Plaquemines Parish, Louisiana, and more particularly described as follows: Beginning at a point on the West line of State Lease No. 21285 having Coordinates of X = 2,751,410.00 and Y = 203,879.57; thence along the boundary of said State Lease No. 21285 the following courses: South 2,389.57 feet along the West line of said State Lease No. 21285 to its Southwest corner having Coordinates of X = 2,751,410.00 and Y = 201,490.00; thence East 3,408.00 feet along the South line of said State Lease No. 21285 to its Southeast corner having Coordinates of X = 2,754,818.00 and Y = 201,490.00; thence North 3,395.80 feet along the East line of said State Lease No. 21285 to its Northeast corner, said corner also being a point on the Louisiana Coastline, as decreed by the Supreme Court of the United States, as determined by a Special Master appointed therein, in litigation styled *United States v. State of Louisiana et al No. 9 Original*, in 1975, having Coordinates of X = 2,754,818.00 and Y = 204,885.80; thence along the boundary of said Coastline the following courses: Southeasterly 547.18 feet on a straight line to a point having Coordinates of X = 2,755,325 and Y = 204,680; thence Southwesterly 877.40 feet on a straight line to a point having Coordinates of X = 2,755,178 and Y = 203,815; thence Southwesterly 3,608.33 feet on a straight line to a point on the South line of Block 75, Main Pass Area, Revised, said corner also being a point on the North line of Block 76, Main Pass Area, Revised, having Coordinates of X = 2,754,948.23 and Y = 200,213.99; thence Southwesterly 4,509.15 feet on a straight line to a point having Coordinates of X = 2,754,661.22 and Y = 195,713.98; thence West 5,911.18 feet to a point on the West line of said Block 76, Main Pass Area, Revised, said corner also being a point on the East line of Block 2, South Pass Area, having Coordinates of X = 2,748,750.04 and Y = 195,713.99; thence West 1,294.51 feet to a point on the Eastern boundary of Pass-A-Loutre Wildlife Management Area having Coordinates of X = 2,747,455.53 and Y = 195,713.99; thence Northwesterly along an arc with a radius of 21,825.00 feet and a center of X = 2,725,759.55 and Y = 193,344.34 to a point having Coordinates of X = 2,745,346.25 and Y = 202,972.00; thence Northwesterly along an arc with a radius of 21,825.00 feet and a center of X = 2,725,759.55 and Y = 193,344.34 to a point having Coordinates of X = 2,744,873.41 and Y = 203,879.57; thence East 3,876.61 feet to a point on the East line of Block 1, South Pass Area, said corner also being a point on the West line of said Block 75, Main Pass Area, Revised, having Coordinates of X = 2,748,750.02 and Y = 203,879.57; thence East 2,659.98 feet to the point of beginning, containing approximately **1,408.19 acres**, all as more particularly outlined on a plat on file in the Office of Mineral Resources, Department of Natural Resources. All bearings, distances and

coordinates are based on Louisiana Coordinate System of 1927, (North or South Zone), where applicable.





NOTE: The above description of the Tract nominated for lease has been provided and corrected, where required, exclusively by the nomination party. Any mineral lease selected from this Tract and awarded by the Louisiana State Mineral and Energy Board shall be without warranty of any kind, either express, implied, or statutory, including, but not limited to, the implied warranties of merchantability and fitness for a particular purpose. Should the mineral lease awarded by the Louisiana State Mineral and Energy Board be subsequently modified, cancelled or abrogated due to the existence of conflicting leases, operating agreements, private claims or other future obligations or conditions which may affect all or any portion of the leased Tract, it shall not relieve the Lessee of the obligation to pay any bonus due thereon to the Louisiana State Mineral and Energy Board, nor shall the Louisiana State Mineral and Energy Board be obligated to refund any consideration paid by the Lessor prior to such modification, cancellation, or abrogation, including, but not limited to, bonuses, rentals and royalties.

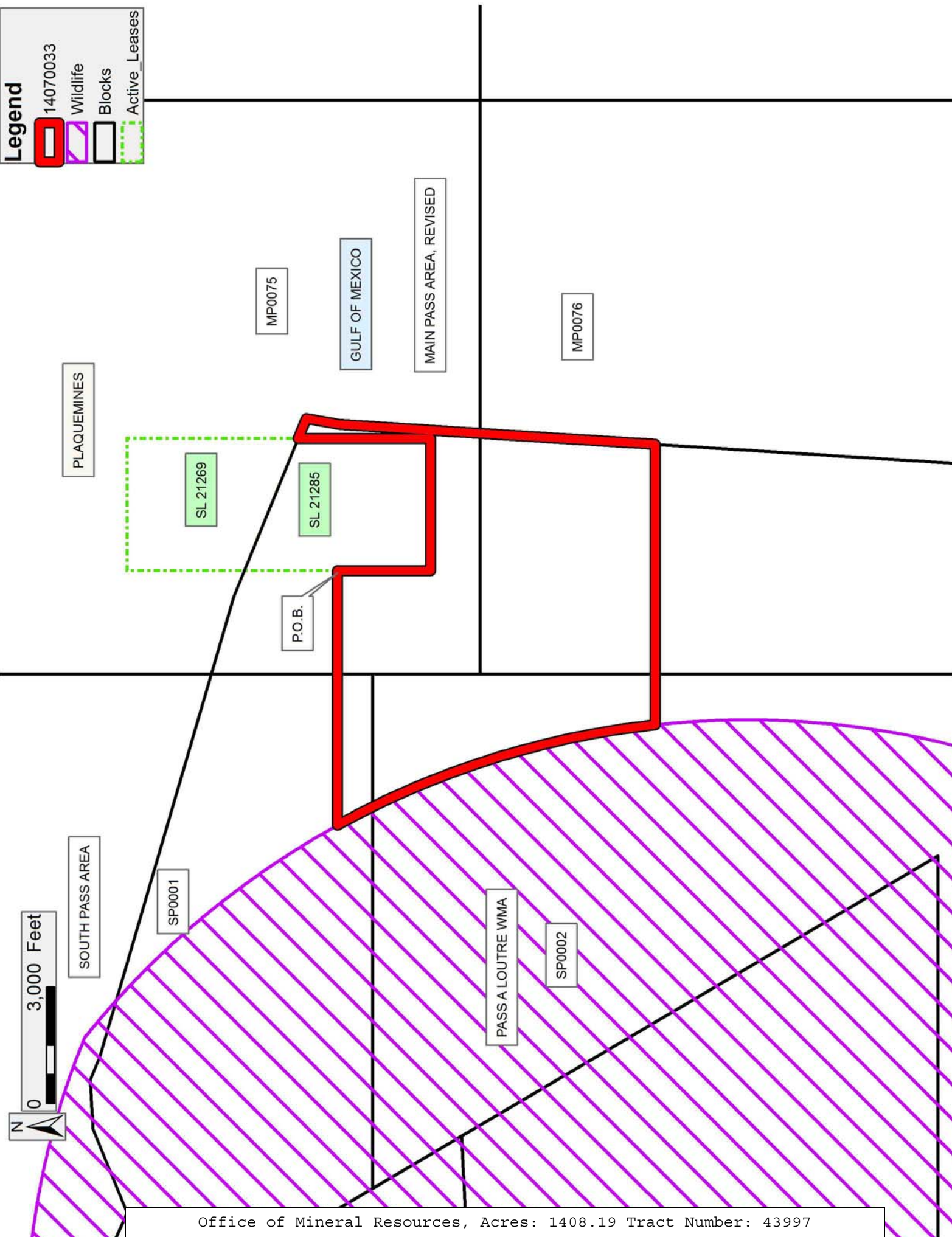
NOTE: The State of Louisiana does hereby reserve, and this lease shall be subject to, the imprescriptible right of surface use in the nature of a servitude in favor of the Department of Natural Resources, including its Offices and Commissions, for the sole purpose of implementing, constructing, servicing and maintaining approved coastal zone management and/or restoration projects. Utilization of any and all rights derived under this lease by the mineral lessee, its agents, successors or assigns, shall not interfere with nor hinder the reasonable surface use by the Department of Natural Resources, its Offices or Commissions, as herein above reserved.

Applicant: HAROLD J. ANDERSON, INC.

Bidder	Cash Payment	Price/Acre	Rental	Oil	Gas	Other

Legend

-  14070033
-  Wildlife
-  Blocks
-  Active_Leases



TRACT 43998 - Portion of Block 76, Main Pass Area, Revised, and Block 2, South Pass Area, Plaquemines Parish, Louisiana

All of the lands now or formerly constituting the beds and bottoms of all water bodies of every nature and description as to which title is vested in the State of Louisiana, together with all islands arising therein and other lands formed by accretion or by reliction, where allowed by law, excepting tax adjudicated lands, and not presently under mineral lease on July 9, 2014, situated in Plaquemines Parish, Louisiana, and more particularly described as follows: Beginning at a point on the Louisiana Coastline, as decreed by the Supreme Court of the United States, as determined by a Special Master appointed therein, in litigation styled *United States v. State of Louisiana et al No. 9 Original*, in 1975, having Coordinates of X = 2,754,661.22 and Y = 195,713.98; thence along the boundary of said Coastline the following courses: Southwesterly 8,816.86 feet on a straight line to a point having Coordinates of X = 2,754,100 and Y = 186,915; thence Southeasterly 620.78 feet on a straight line to a point having Coordinates of X = 2,754,263 and Y = 186,316; thence Southwesterly 867.50 feet on a straight line to a point on the South line of Block 75, Main Pass Area, Revised, having Coordinates of X = 2,754,149.17 and Y = 185,455.99; thence West 5,399.18 feet along the South line of said Block 75, Main Pass Area, Revised to its Southwest corner, said corner also being the Southeast corner of Block 1, South Pass Area, having Coordinates of X = 2,748,750.00 and Y = 185,456.01; thence West 2,640.89 feet along the South line of said Block 1, South Pass Area, to a point on the Eastern boundary of Pass-A-Loutre Wildlife Management Area having Coordinates of X = 2,746,109.11 and Y = 185,456.00; thence Northeasterly along an arc with a radius of 21,825.00 feet and a center of X = 2,725,759.55 and Y = 193,344.34 to a point having Coordinates of X = 2,747,455.53 and Y = 195,713.99; thence East 1,294.51 feet to a point on the East line of said Block 1, South Pass Area, said corner also being a point on the West line of said Block 75, Main Pass Area, Revised, having Coordinates of X = 2,748,750.04 and Y = 195,713.99; thence East 5,911.18 feet to the point of beginning, containing approximately **1,684.39 acres**, all as more particularly outlined on a plat on file in the Office of Mineral Resources, Department of Natural Resources. All bearings, distances and coordinates are based on Louisiana Coordinate System of 1927, (North or South Zone), where applicable.

NOTE: The above description of the Tract nominated for lease has been provided and corrected, where required, exclusively by the nomination party. Any mineral lease selected from this Tract and awarded by the Louisiana State Mineral and Energy Board shall be without warranty of any kind, either express, implied, or statutory, including, but not limited to, the implied warranties of merchantability and fitness for a particular purpose. Should the mineral lease awarded by the Louisiana State Mineral and Energy Board be subsequently modified, cancelled or abrogated due to the existence of conflicting leases, operating agreements, private claims or other future obligations or conditions which may affect all or any portion of the leased Tract, it shall not relieve the Lessee of the

obligation to pay any bonus due thereon to the Louisiana State Mineral and Energy Board, nor shall the Louisiana State Mineral and Energy Board be obligated to refund any consideration paid by the Lessor prior to such modification, cancellation, or abrogation, including, but not limited to, bonuses, rentals and royalties.

NOTE: The State of Louisiana does hereby reserve, and this lease shall be subject to, the imprescriptible right of surface use in the nature of a servitude in favor of the Department of Natural Resources, including its Offices and Commissions, for the sole purpose of implementing, constructing, servicing and maintaining approved coastal zone management and/or restoration projects. Utilization of any and all rights derived under this lease by the mineral lessee, its agents, successors or assigns, shall not interfere with nor hinder the reasonable surface use by the Department of Natural Resources, its Offices or Commissions, as herein above reserved.

Applicant: HAROLD J. ANDERSON, INC.

Bidder	Cash Payment	Price/Acre	Rental	Oil	Gas	Other

Legend

14070034
Wildlife
Blocks

PLAQUEMINES

P.O.B.

MP0076

GULF OF MEXICO

MP0079

MAIN PASS AREA, REVISED

0 3,000 Feet



SP0002

PASS A LOUTRE WMA

SOUTH PASS AREA

SP0005