

TRACT 44012 - Portion of Blocks 11, and 12, South Timbalier Area, Revised, Terrebonne Parish, Louisiana

The beds and bottoms of all water bodies belonging to the State of Louisiana located in Blocks 11, and 12, South Timbalier Area, Revised, together with any present lands formed by accretion to the shoreline or islands formed therein, located in Terrebonne Parish, Louisiana, owned by and not presently under mineral lease as of August 13, 2014, from the State of Louisiana, the geographical area of which is more fully described as follows: Beginning at a point having Coordinates of X = 2,264,446.02 and Y = 142,086.58, said point being on the West line of Block 12, South Timbalier Area, Revised, said point also being the northernmost corner of State of Louisiana State Lease No. 15110, as amended; Thence North 5,589.72 feet on and along said West line of said Block 12, South Timbalier Area, Revised, a point having Coordinates of X = 2,264,446.02 and Y = 147,676.30, said point being on the Louisiana Coastline as decreed by the Supreme Court of the United States, as determined by a Special Master appointed therein, in litigation styled United States v. State of Louisiana et al No. 9 Original, in 1975; Thence on and along said Louisiana Coastline the following courses and distances, to wit: South 59 degrees 58 minutes 37 seconds East 4.60 feet to a point having Coordinates of X = 2,264,450.00 and Y = 147,674.00; and South 65 degrees 49 minutes 41 seconds East 4,766.15 feet to a point having Coordinates of X = 2,268,798.26 and Y = 145,722.38; Thence South 9,450.00 feet to a point having Coordinates of X = 2,268,798.26 and Y = 136,272.38; Thence West 4,352.24 feet to a point having Coordinates of X = 2,264,446.02 and Y = 136,272.38, said point being on the line common to said Blocks 11 and 12, South Timbalier Area, Revised; Thence West 11,784.49 feet to a point having Coordinates of X = 2,252,661.53 and Y = 136,272.38, Thence North 5,281.15 feet to a point having Coordinates of X = 2,252,661.53 and Y = 141,553.53, said point being on the south line of State of Louisiana State Lease No. 21137; Thence East 1,146.51 feet point on and along said south line of said State of Louisiana State Lease No. 21137 to a point having Coordinates of X = 2,253,808.04 and Y = 141,553.53, said point being the southeast corner of said State of Louisiana State Lease No. 21137, said point also being a southwest corner of State of Louisiana State Lease No. 1249, as amended; Thence East 9,316.59 feet on and along the southern boundary of said State of Louisiana State Lease No. 1249, as amended, to a point having Coordinates of X = 2,263,124.63 and Y = 141,553.53, said point being the westernmost corner of State of Louisiana State Lease No. 15108, as amended; Thence on and along the southern boundary of said State of Louisiana State Lease No. 15108, as amended, the following courses and distances, to wit: South 64 degrees 12 minutes 06 seconds East 500.00 feet to a point having Coordinates of X = 2,263,574.80 and Y = 141,335.93; South 66 degrees 02 minutes 24 seconds East 301.90 feet to a point having Coordinates of X = 2,263,850.68 and Y = 141,213.33; South 69 degrees 40 minutes 04 seconds East 537.53 feet to a point having Coordinates of X = 2,264,354.72 and Y = 141,026.56; and North 47 degrees 15 minutes 46 seconds East 124.31 feet to a point having Coordinates of X = 2,264,446.02 and Y = 141,110.92, said point being on the line common to Blocks 11 and

12, South Timbalier Area, Revised, said point also being the southernmost corner of said State of Louisiana State Lease No. 15110, as amended; Thence on and along the eastern and northern boundaries of said State of Louisiana State Lease No. 15110, as amended, the following courses and distances, to wit: North 47 degrees 15 minutes 46 seconds East 1,064.94 feet to a point having Coordinates of X = 2,265,225.99 and Y = 141,831.59; North 73 degrees 59 minutes 53 seconds West 393.90 feet to a point having Coordinates of X = 2,264,847.35 and Y = 141,940.18; and North 69 degrees 57 minutes 29 seconds West 427.21 feet to the Point of Beginning, containing approximately **2,452.99 acres**, all as more particularly outlined on a plat on file in the Office of Mineral Resources, Department of Natural Resources. All bearings, distances and coordinates are based on Louisiana Coordinate System of 1927, (North or South Zone).

NOTE: The above description of the Tract nominated for lease has been provided and corrected, where required, exclusively by the nomination party. Any mineral lease selected from this Tract and awarded by the Louisiana State Mineral and Energy Board shall be without warranty of any kind, either express, implied, or statutory, including, but not limited to, the implied warranties of merchantability and fitness for a particular purpose. Should the mineral lease awarded by the Louisiana State Mineral and Energy Board be subsequently modified, cancelled or abrogated due to the existence of conflicting leases, operating agreements, private claims or other future obligations or conditions which may affect all or any portion of the leased Tract, it shall not relieve the Lessee of the obligation to pay any bonus due thereon to the Louisiana State Mineral and Energy Board, nor shall the Louisiana State Mineral and Energy Board be obligated to refund any consideration paid by the Lessor prior to such modification, cancellation, or abrogation, including, but not limited to, bonuses, rentals and royalties.

NOTE: The State of Louisiana does hereby reserve, and this lease shall be subject to, the imprescriptible right of surface use in the nature of a servitude in favor of the Department of Natural Resources, including its Offices and Commissions, for the sole purpose of implementing, constructing, servicing and maintaining approved coastal zone management and/or restoration projects. Utilization of any and all rights derived under this lease by the mineral lessee, its agents, successors or assigns, shall not interfere with nor hinder the reasonable surface use by the Department of Natural Resources, its Offices or Commissions, as herein above reserved.

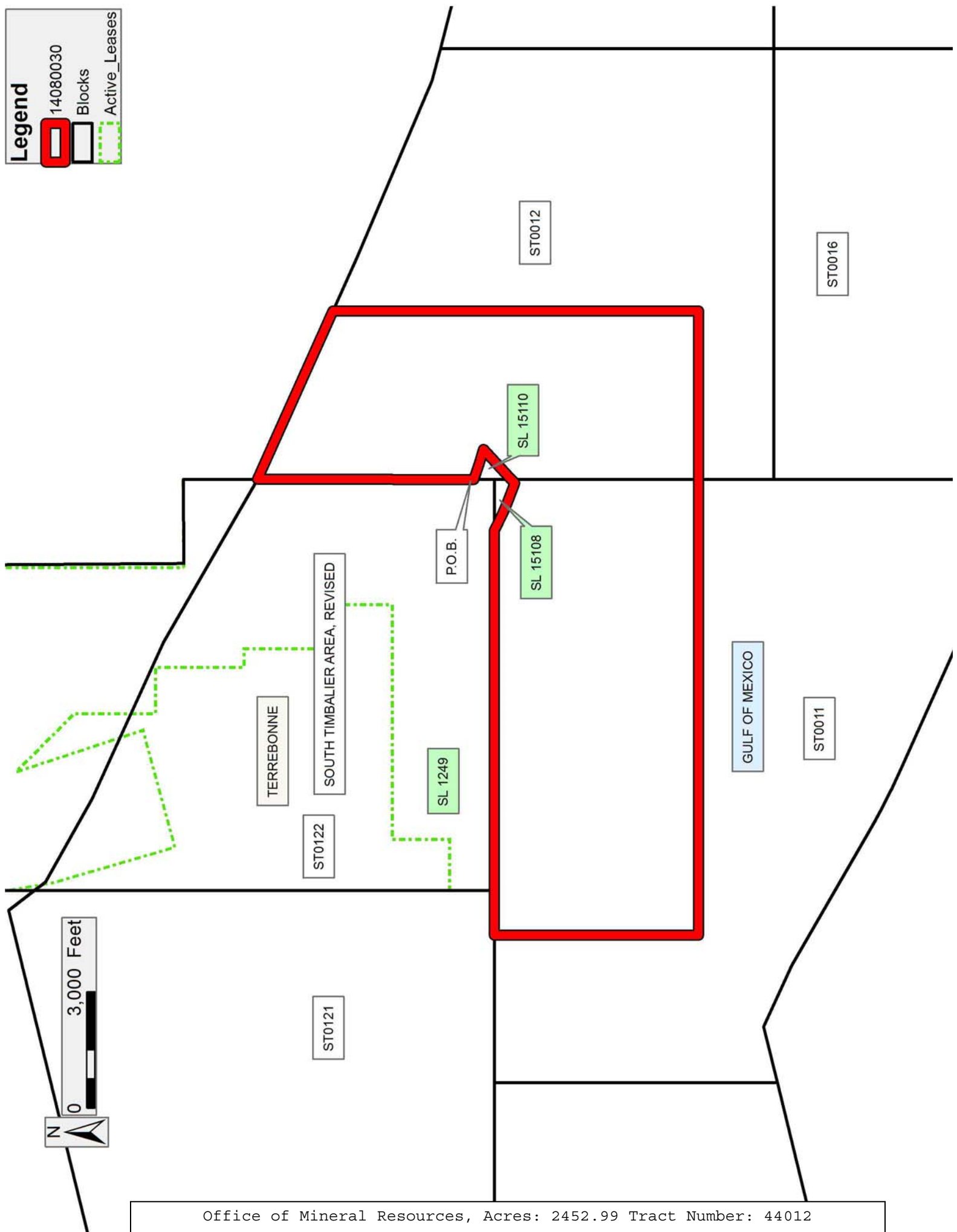
NOTE: It appears, according to our records, that a portion of this Tract is located within the restrictive safety fairway area as set out by the Corps of Engineers, U.S. Army and/or the restrictive anchorage area as set out by the U.S. Coast Guard.

Applicant: ROBERT A. SCHROEDER, INC.

Bidder	Cash Payment	Price/Acre	Rental	Oil	Gas	Other

Legend

-  14080030
-  Blocks
-  Active_Leases



TRACT 44013 - Portion of Blocks 12, and 13, South Timbalier Area, Revised, Terrebonne Parish, Louisiana

The beds and bottoms of all water bodies belonging to the State of Louisiana located in Blocks 12, and 13, South Timbalier Area, Revised, together with any present lands formed by accretion to the shoreline or islands formed therein, located in Terrebonne Parish, Louisiana, owned by and not presently under mineral lease as of August 13, 2014, from the State of Louisiana, the geographical area of which is more fully described as follows: Beginning at a point having Coordinates of X = 2,275,580.02 and Y = 142,945.03, said point being on the Louisiana Coastline as decreed by the Supreme Court of the United States, as determined by a Special Master appointed therein, in litigation styled United States v. State of Louisiana et al No. 9 Original, in 1975, said point also being the northeast corner of Block 12, South Timbalier Area, Revised, said point also being the northwest corner of Block 13, South Timbalier Area, Revised; Thence South 75 degrees 25 minutes 56 seconds East 5,152.81 feet on and along said Louisiana Coastline to a point having Coordinates of X = 2,280,567.17 and Y = 141,648.97; Thence South 5,376.59 feet to a point having Coordinates of X = 2,280,567.17 and Y = 136,272.38; Thence West 4,987.15 feet to a point having Coordinates of X = 2,275,580.02 and Y = 136,272.38, said point being on the line common to said Blocks 12 and 13, South Timbalier Area, Revised; Thence West 6,781.76 feet to a point having Coordinates of X = 2,268,798.26 and Y = 136,272.38; Thence North 9,450.00 feet to a point having Coordinates of X = 2,268,798.26 and Y = 145,722.38, said point being on said Louisiana Coastline; Thence on and along said Louisiana Coastline the following courses and distances, to wit: South 65 degrees 49 minutes 42 seconds East 1,541.93 feet to a point having Coordinates of X = 2,270,205.00 and Y = 145,091.00; South 66 degrees 59 minutes 14 seconds East 4,936.89 feet to a point having Coordinates of X = 2,274,749.00 and Y = 143,161.00; and South 75 degrees 25 minutes 55 seconds East 858.63 feet to the Point of Beginning, containing approximately **1,933.36 acres**, all as more particularly outlined on a plat on file in the Office of Mineral Resources, Department of Natural Resources. All bearings, distances and coordinates are based on Louisiana Coordinate System of 1927, (North or South Zone).

NOTE: The above description of the Tract nominated for lease has been provided and corrected, where required, exclusively by the nomination party. Any mineral lease selected from this Tract and awarded by the Louisiana State Mineral and Energy Board shall be without warranty of any kind, either express, implied, or statutory, including, but not limited to, the implied warranties of merchantability and fitness for a particular purpose. Should the mineral lease awarded by the Louisiana State Mineral and Energy Board be subsequently modified, cancelled or abrogated due to the existence of conflicting leases, operating agreements, private claims or other future obligations or conditions which may affect all or any portion of the leased Tract, it shall not relieve the Lessee of the obligation to pay any bonus due thereon to the Louisiana State Mineral and Energy Board, nor shall the Louisiana State Mineral and Energy Board be

obligated to refund any consideration paid by the Lessor prior to such modification, cancellation, or abrogation, including, but not limited to, bonuses, rentals and royalties.

NOTE: The State of Louisiana does hereby reserve, and this lease shall be subject to, the imprescriptible right of surface use in the nature of a servitude in favor of the Department of Natural Resources, including its Offices and Commissions, for the sole purpose of implementing, constructing, servicing and maintaining approved coastal zone management and/or restoration projects. Utilization of any and all rights derived under this lease by the mineral lessee, its agents, successors or assigns, shall not interfere with nor hinder the reasonable surface use by the Department of Natural Resources, its Offices or Commissions, as herein above reserved.

Applicant: ROBERT A. SCHROEDER, INC.

Bidder	Cash Payment	Price/Acre	Rental	Oil	Gas	Other

Legend

14080032

Blocks

