

TRACT 44014 - Avoyelles and Concordia Parishes, Louisiana

All of the lands now or formerly constituting the beds and bottoms of all water bodies of every nature and description as to which title is vested in the State of Louisiana, together with all islands arising therein and other lands formed by accretion or by reliction, where allowed by law, excepting tax adjudicated lands, and not presently under mineral lease on August 13, 2014, situated in Avoyelles and Concordia Parishes, Louisiana, and more particularly described as follows: Beginning at a point having Coordinates of X = 2,230,585.19 and Y = 200,104.67; thence North 00 degrees 03 minutes 25 seconds West 4,175.66 feet to a point having Coordinates of X = 2,230,581.03 and Y = 204,280.33; thence South 80 degrees 28 minutes 12 seconds East 3,130.86 feet to a point having Coordinates of X = 2,233,668.69 and Y = 203,761.97; thence South 47 degrees 02 minutes 18 seconds East 10,208.86 feet to a point having Coordinates of X = 2,241,139.62 and Y = 196,804.53; thence Southerly approximately 510 feet to the Northwest corner of State Lease No. 12938, as amended; thence Southerly approximately 699 feet along the west boundary of said State Lease No. 12938 to its Southwest corner; thence Southerly approximately 1,284 feet to a point having Coordinates of X = 2,241,218.09 and Y = 194,317.54; thence North 61 degrees 26 minutes 31 seconds West 12,105.76 feet to the point of beginning, **LESS AND EXCEPT** any portion lying within the Richard K Yancey WMA, and **LESS AND EXCEPT** any portion lying within school indemnity land, and **LESS AND EXCEPT** any right, title, and interest in lands owned by and not under lease from the State of Louisiana, on behalf of the Concordia Parish School Board, situated in Section 16, Township 3 North, Range 7 East, Concordia Parish, Louisiana, contained within the above described tract, containing approximately **291 acres**, all as more particularly outlined on a plat on file in the Office of Mineral Resources, Department of Natural Resources. All bearings, distances and coordinates are based on Louisiana Coordinate System of 1927, (North or South Zone), where applicable.

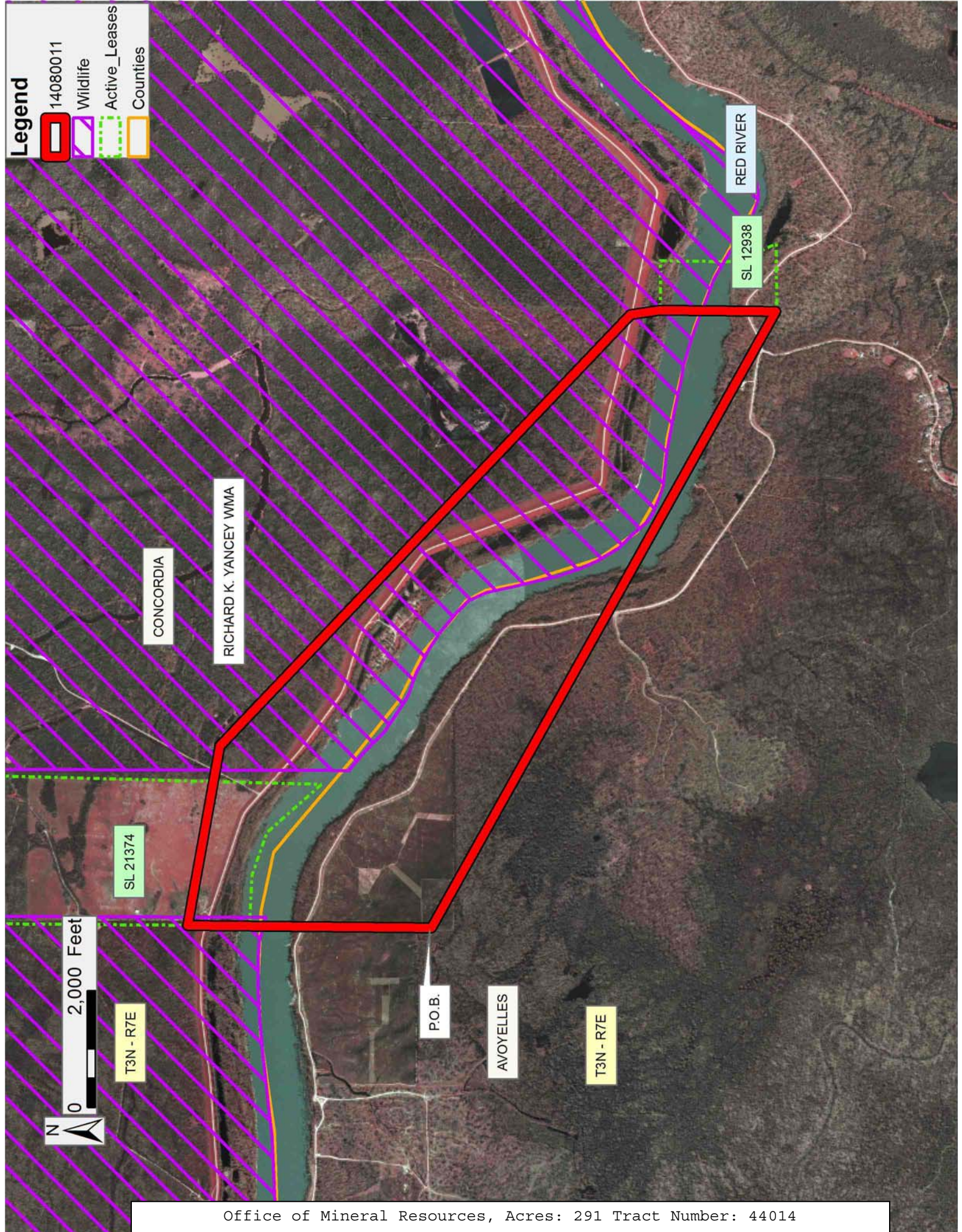
NOTE: The above description of the Tract nominated for lease has been provided and corrected, where required, exclusively by the nomination party. Any mineral lease selected from this Tract and awarded by the Louisiana State Mineral and Energy Board shall be without warranty of any kind, either express, implied, or statutory, including, but not limited to, the implied warranties of merchantability and fitness for a particular purpose. Should the mineral lease awarded by the Louisiana State Mineral and Energy Board be subsequently modified, cancelled or abrogated due to the existence of conflicting leases, operating agreements, private claims or other future obligations or conditions which may affect all or any portion of the leased Tract, it shall not relieve the Lessee of the obligation to pay any bonus due thereon to the Louisiana State Mineral and Energy Board, nor shall the Louisiana State Mineral and Energy Board be obligated to refund any consideration paid by the Lessor prior to such modification, cancellation, or abrogation, including, but not limited to, bonuses, rentals and royalties.

Applicant: TPT ENERGY

Bidder	Cash Payment	Price/Acre	Rental	Oil	Gas	Other

Legend

- 14080011
- Wildlife
- Active_Leases
- Counties



TRACT 44015 - Avoyelles and Concordia Parishes, Louisiana

All of the lands now or formerly constituting the beds and bottoms of all water bodies of every nature and description as to which title is vested in the State of Louisiana, together with all islands arising therein and other lands formed by accretion or by reliction, where allowed by law, excepting tax adjudicated lands, and not presently under mineral lease on August 13, 2014, situated in Avoyelles and Concordia Parishes, Louisiana, and more particularly described as follows: Beginning at a point having Coordinates of X = 2,242,366.40 and Y = 194,349.15; thence Northerly approximately 938 feet to the Southeast corner of State Lease No. 12938, as amended; thence Northerly approximately 1,065 feet along the east boundary of said State Lease No. 12938 to its Northeast corner; thence Northerly approximately 692 feet to a point having Coordinates of X = 2,241,989.01 and Y = 196,989.41; thence North 63 degrees 18 minutes 43 seconds East 5,717.91 feet to a point having Coordinates of X = 2,247,097.76 and Y = 199,557.51; thence South 67 degrees 19 minutes 43 seconds East 8,068.98 feet to a point having Coordinates of X = 2,254,543.25 and Y = 196,447.36; thence Southerly approximately 1,420 feet to the Northwest corner of State Lease No. 12894, as amended; thence southerly approximately 733 feet along the West boundary of said State Lease No. 12894 to its Southwest corner; thence Southerly approximately 487 feet to a point having Coordinates of X = 2,254,543.25 and Y = 193,807.37; thence North 87 degrees 27 minutes 09 seconds West 12,188.90 feet to the point of beginning, **LESS AND EXCEPT** any portion lying within the Richard K Yancey WMA, containing approximately **319 acres**, all as more particularly outlined on a plat on file in the Office of Mineral Resources, Department of Natural Resources. All bearings, distances and coordinates are based on Louisiana Coordinate System of 1927, (North or South Zone), where applicable.

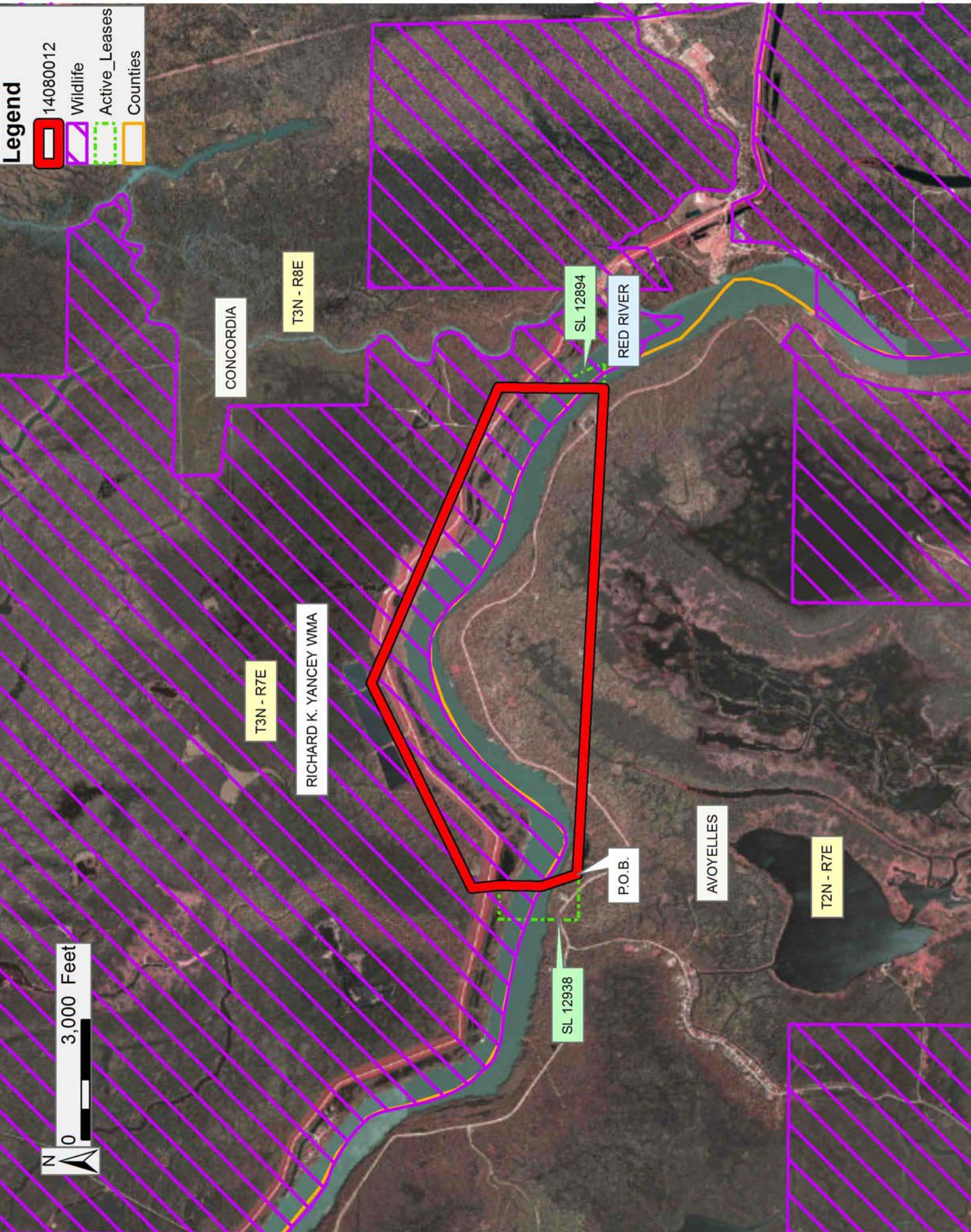
NOTE: The above description of the Tract nominated for lease has been provided and corrected, where required, exclusively by the nomination party. Any mineral lease selected from this Tract and awarded by the Louisiana State Mineral and Energy Board shall be without warranty of any kind, either express, implied, or statutory, including, but not limited to, the implied warranties of merchantability and fitness for a particular purpose. Should the mineral lease awarded by the Louisiana State Mineral and Energy Board be subsequently modified, cancelled or abrogated due to the existence of conflicting leases, operating agreements, private claims or other future obligations or conditions which may affect all or any portion of the leased Tract, it shall not relieve the Lessee of the obligation to pay any bonus due thereon to the Louisiana State Mineral and Energy Board, nor shall the Louisiana State Mineral and Energy Board be obligated to refund any consideration paid by the Lessor prior to such modification, cancellation, or abrogation, including, but not limited to, bonuses, rentals and royalties.

Applicant: TPT ENERGY

Bidder	Cash Payment	Price/Acre	Rental	Oil	Gas	Other

Legend

- 14080012
- Wildlife
- Active_Leases
- Counties



TRACT 44016 - East Feliciana Parish, Louisiana

All of the lands now or formerly constituting the beds and bottoms of all water bodies of every nature and description as to which title is vested in the State of Louisiana, together with all islands arising therein and other lands formed by accretion or by reliction, where allowed by law, excepting tax adjudicated lands, and not presently under mineral lease on August 13, 2014, situated in East Feliciana Parish, Louisiana, and more particularly described as follows: Beginning at a point having Coordinates of X = 2,136,650.00 and Y = 838,035.00; thence West 11,050.00 feet to a point having Coordinates of X = 2,125,600.00 and Y = 838,035.00; thence North 12,215.00 feet to a point having Coordinates of X = 2,125,600.00 and Y = 850,250.00; thence East 11,050.00 feet to a point having Coordinates of X = 2,136,650.00 and Y = 850,250.00; thence South 12,215.00 feet to the point of beginning, **LESS AND EXCEPT** any right, title, and interest in lands owned by and not under lease from the State of Louisiana, on behalf of the East Feliciana Parish School Board, situated in Section 16, Township 1 South, Range 3 East, East Feliciana Parish, Louisiana, contained within the above described tract, and **LESS AND EXCEPT** any portion of the described tract that may fall with the State of Mississippi, containing approximately **11 acres**, all as more particularly outlined on a plat on file in the Office of Mineral Resources, Department of Natural Resources. All bearings, distances and coordinates are based on Louisiana Coordinate System of 1927, (North or South Zone), where applicable.

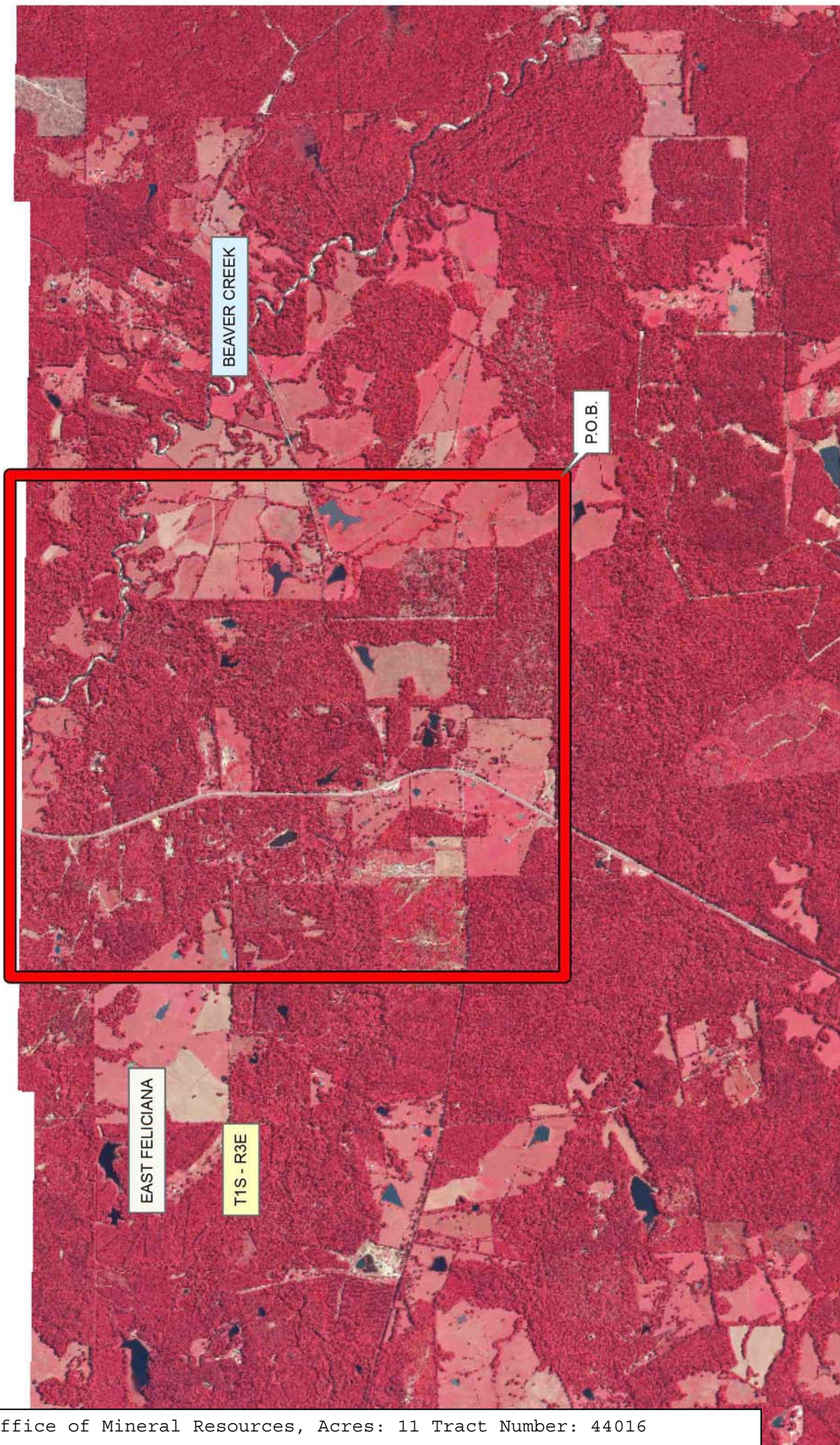
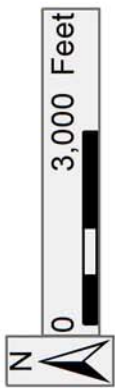
NOTE: The above description of the Tract nominated for lease has been provided and corrected, where required, exclusively by the nomination party. Any mineral lease selected from this Tract and awarded by the Louisiana State Mineral and Energy Board shall be without warranty of any kind, either express, implied, or statutory, including, but not limited to, the implied warranties of merchantability and fitness for a particular purpose. Should the mineral lease awarded by the Louisiana State Mineral and Energy Board be subsequently modified, cancelled or abrogated due to the existence of conflicting leases, operating agreements, private claims or other future obligations or conditions which may affect all or any portion of the leased Tract, it shall not relieve the Lessee of the obligation to pay any bonus due thereon to the Louisiana State Mineral and Energy Board, nor shall the Louisiana State Mineral and Energy Board be obligated to refund any consideration paid by the Lessor prior to such modification, cancellation, or abrogation, including, but not limited to, bonuses, rentals and royalties.

NOTE: The Office of Mineral Resources will require a minimum bonus of \$250 per acre and a minimum royalty of 22.5%.

Applicant: STAFF OFFICE OF MINERAL RESOURCES

Bidder	Cash Payment	Price/Acre	Rental	Oil	Gas	Other

Legend
14080003



TRACT 44017 - East Feliciana Parish, Louisiana

All of the lands now or formerly constituting the beds and bottoms of all water bodies of every nature and description as to which title is vested in the State of Louisiana, together with all islands arising therein and other lands formed by accretion or by reliction, where allowed by law, excepting tax adjudicated lands, and not presently under mineral lease on August 13, 2014, situated in East Feliciana Parish, Louisiana, and more particularly described as follows: Beginning at a point having Coordinates of X = 2,136,650.00 and Y = 838,035.00; thence North 12,215.00 feet to a point having Coordinates of X = 2,136,650.00 and Y = 850,250.00; thence East 11,050.00 feet to a point having Coordinates of X = 2,147,700.00 and Y = 850,250.00; thence South 12,215.00 feet to a point on the North line of State Lease No. 20550 having Coordinates of X = 2,147,700.00 and Y = 838,035.00; thence West 4,585.00 feet along the North line of said State Lease No. 20550 to its Northwest corner having Coordinates of X = 2,143,115.00 and Y = 838,035.00; thence West 6,465.00 feet to the point of beginning, **LESS AND EXCEPT** any right, title, and interest in lands owned by and not under lease from the State of Louisiana, on behalf of the East Feliciana Parish School Board, situated in Section 16, Township 1 South, Range 3 East, East Feliciana Parish, Louisiana, contained within the above described tract, and **LESS AND EXCEPT** any portion of the described tract that may fall with the State of Mississippi, containing approximately **34 acres**, all as more particularly outlined on a plat on file in the Office of Mineral Resources, Department of Natural Resources. All bearings, distances and coordinates are based on Louisiana Coordinate System of 1927, (North or South Zone), where applicable.

NOTE: The above description of the Tract nominated for lease has been provided and corrected, where required, exclusively by the nomination party. Any mineral lease selected from this Tract and awarded by the Louisiana State Mineral and Energy Board shall be without warranty of any kind, either express, implied, or statutory, including, but not limited to, the implied warranties of merchantability and fitness for a particular purpose. Should the mineral lease awarded by the Louisiana State Mineral and Energy Board be subsequently modified, cancelled or abrogated due to the existence of conflicting leases, operating agreements, private claims or other future obligations or conditions which may affect all or any portion of the leased Tract, it shall not relieve the Lessee of the obligation to pay any bonus due thereon to the Louisiana State Mineral and Energy Board, nor shall the Louisiana State Mineral and Energy Board be obligated to refund any consideration paid by the Lessor prior to such modification, cancellation, or abrogation, including, but not limited to, bonuses, rentals and royalties.

NOTE: The Office of Mineral Resources will require a minimum bonus of \$250 per acre and a minimum royalty of 22.5%.

Applicant: STAFF OFFICE OF MINERAL RESOURCES

Bidder	Cash Payment	Price/Acre	Rental	Oil	Gas	Other

Legend

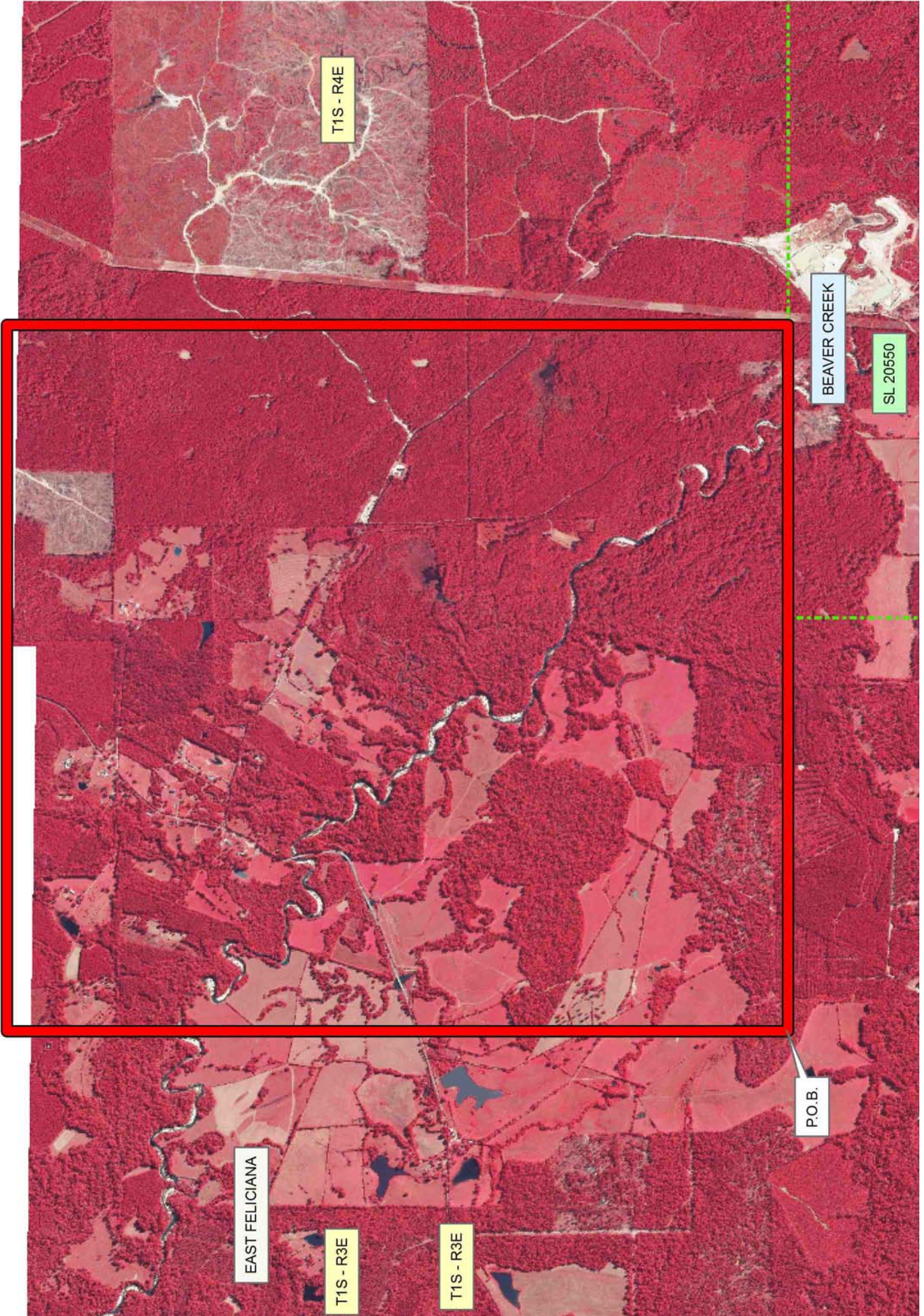
14080002



Active_Leases



0 2,000 Feet



TRACT 44018 - St. Helena Parish, Louisiana

All of the lands now or formerly constituting the beds and bottoms of all water bodies of every nature and description as to which title is vested in the State of Louisiana, together with all islands arising therein and other lands formed by accretion or by reliction, where allowed by law, excepting tax adjudicated lands, and not presently under mineral lease on August 13, 2014, situated in St. Helena Parish, Louisiana, and more particularly described as follows: Beginning at a point having Coordinates of X = 2,209,700.00 and Y = 834,150.00; thence West 7,550.00 feet to a point having Coordinates of X = 2,202,150.00 and Y = 834,150.00; thence North 16,100.00 feet to a point having Coordinates of X = 2,202,150.00 and Y = 850,250.00; thence East 7,550.00 feet to a point having Coordinates of X = 2,209,700.00 and Y = 850,250.00; thence South 16,100.00 feet to the point of beginning, **LESS AND EXCEPT** any portion of the described tract that may fall with the State of Mississippi, containing approximately **30 acres**, all as more particularly outlined on a plat on file in the Office of Mineral Resources, Department of Natural Resources. All bearings, distances and coordinates are based on Louisiana Coordinate System of 1927, (North or South Zone), where applicable.

NOTE: The above description of the Tract nominated for lease has been provided and corrected, where required, exclusively by the nomination party. Any mineral lease selected from this Tract and awarded by the Louisiana State Mineral and Energy Board shall be without warranty of any kind, either express, implied, or statutory, including, but not limited to, the implied warranties of merchantability and fitness for a particular purpose. Should the mineral lease awarded by the Louisiana State Mineral and Energy Board be subsequently modified, cancelled or abrogated due to the existence of conflicting leases, operating agreements, private claims or other future obligations or conditions which may affect all or any portion of the leased Tract, it shall not relieve the Lessee of the obligation to pay any bonus due thereon to the Louisiana State Mineral and Energy Board, nor shall the Louisiana State Mineral and Energy Board be obligated to refund any consideration paid by the Lessor prior to such modification, cancellation, or abrogation, including, but not limited to, bonuses, rentals and royalties.

NOTE: The Office of Mineral Resources will require a minimum bonus of \$250 per acre and a minimum royalty of 22.5%.

NOTE: A portion of this tract is located on or adjacent to a Louisiana designated Natural and Scenic River. The applicant must obtain authorization from the Louisiana Department of Wildlife and Fisheries, Scenic Rivers Program prior to initiating any activities within or adjacent to the river, including, but not limited to, crossings by roads and pipelines, well sites, production facilities and water withdrawals.

Applicant: STAFF OFFICE OF MINERAL RESOURCES

Bidder	Cash Payment	Price/Acre	Rental	Oil	Gas	Other

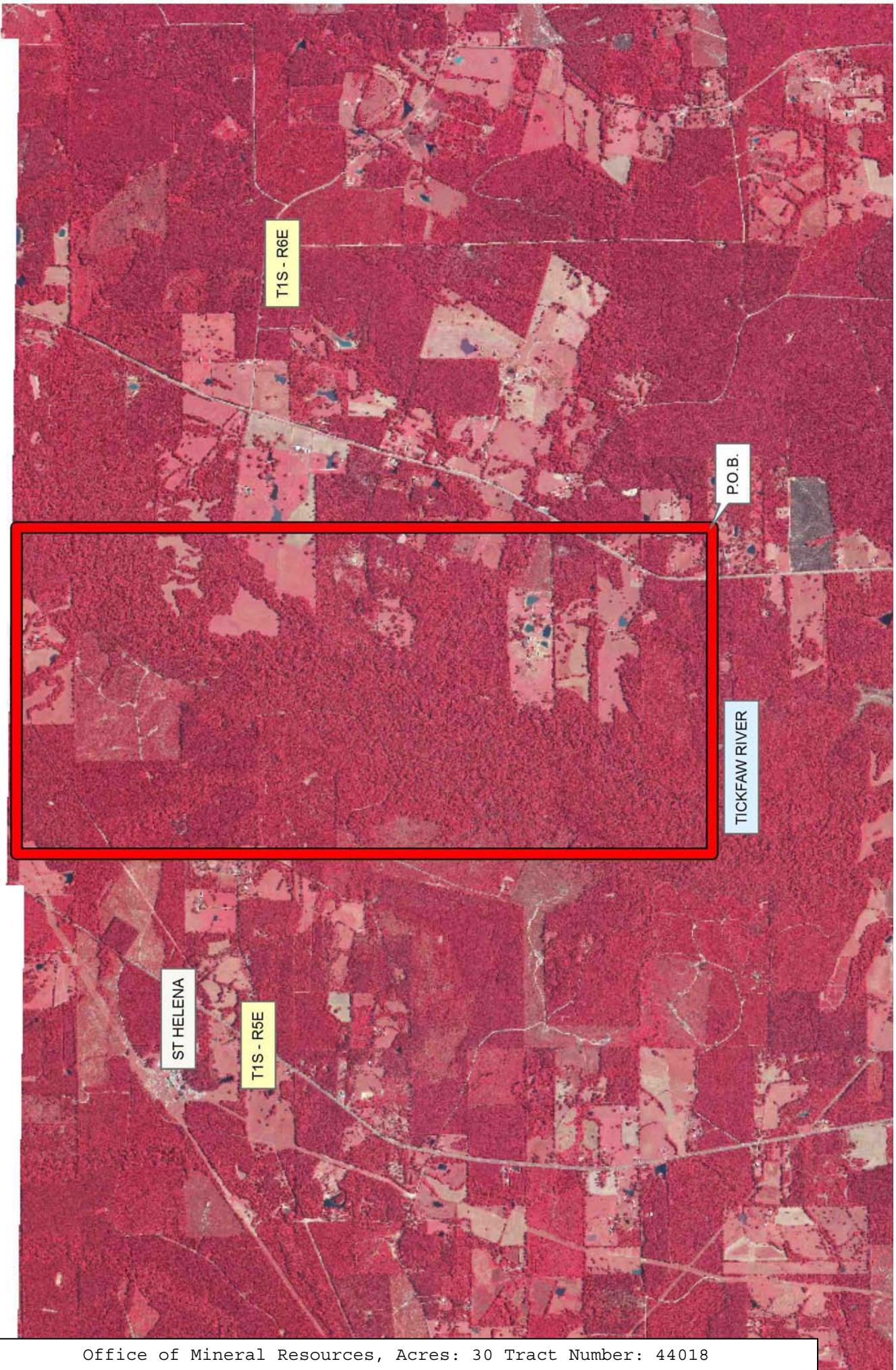
Legend



14080001



0 3,000 Feet



TRACT 44019 - St. Helena Parish, Louisiana

All of the lands now or formerly constituting the beds and bottoms of all water bodies of every nature and description as to which title is vested in the State of Louisiana, together with all islands arising therein and other lands formed by accretion or by reliction, where allowed by law, excepting tax adjudicated lands, and not presently under mineral lease on August 13, 2014, situated in St. Helena Parish, Louisiana, and more particularly described as follows: Beginning at a point having Coordinates of X = 2,209,050.00 and Y = 834,150.00; thence South 14,300.00 feet to a point having Coordinates of X = 2,209,050.00 and Y = 819,850.00; thence West 7,550.00 feet to a point having Coordinates of X = 2,201,500.00 and Y = 819,850.00; thence North 14,300.00 feet to a point having Coordinates of X = 2,201,500.00 and Y = 834,150.00; thence East 7,550.00 feet to the point of beginning, containing approximately **27 acres**, all as more particularly outlined on a plat on file in the Office of Mineral Resources, Department of Natural Resources. All bearings, distances and coordinates are based on Louisiana Coordinate System of 1927, (North or South Zone), where applicable.

NOTE: The above description of the Tract nominated for lease has been provided and corrected, where required, exclusively by the nomination party. Any mineral lease selected from this Tract and awarded by the Louisiana State Mineral and Energy Board shall be without warranty of any kind, either express, implied, or statutory, including, but not limited to, the implied warranties of merchantability and fitness for a particular purpose. Should the mineral lease awarded by the Louisiana State Mineral and Energy Board be subsequently modified, cancelled or abrogated due to the existence of conflicting leases, operating agreements, private claims or other future obligations or conditions which may affect all or any portion of the leased Tract, it shall not relieve the Lessee of the obligation to pay any bonus due thereon to the Louisiana State Mineral and Energy Board, nor shall the Louisiana State Mineral and Energy Board be obligated to refund any consideration paid by the Lessor prior to such modification, cancellation, or abrogation, including, but not limited to, bonuses, rentals and royalties.

NOTE: The Office of Mineral Resources will require a minimum bonus of \$250 per acre and a minimum royalty of 22.5%.

NOTE: A portion of this tract is located on or adjacent to a Louisiana designated Natural and Scenic River. The applicant must obtain authorization from the Louisiana Department of Wildlife and Fisheries, Scenic Rivers Program prior to initiating any activities within or adjacent to the river, including, but not limited to, crossings by roads and pipelines, well sites, production facilities and water withdrawals.

Applicant: STAFF OFFICE OF MINERAL RESOURCES

Bidder	Cash Payment	Price/Acre	Rental	Oil	Gas	Other

Legend

14080004



T1S - R6E

P.O.B.

TICKFAW RIVER

ST HELENA

T1S - R5E



3,000 Feet

TRACT 44020 - St. Helena Parish, Louisiana

All of the lands now or formerly constituting the beds and bottoms of all water bodies of every nature and description as to which title is vested in the State of Louisiana, together with all islands arising therein and other lands formed by accretion or by reliction, where allowed by law, excepting tax adjudicated lands, and not presently under mineral lease on August 13, 2014, situated in St. Helena Parish, Louisiana, and more particularly described as follows: Beginning at a point having Coordinates of X = 2,212,825.00 and Y = 819,850.00; thence South 16,450.00 feet to a point having Coordinates of X = 2,212,825.00 and Y = 803,400.00; thence West 7,550.00 feet to a point having Coordinates of X = 2,205,275.00 and Y = 803,400.00; thence North 16,450.00 feet to a point having Coordinates of X = 2,205,275.00 and Y = 819,850.00; thence East 7,550.00 feet to the point of beginning, containing approximately **28 acres**, all as more particularly outlined on a plat on file in the Office of Mineral Resources, Department of Natural Resources. All bearings, distances and coordinates are based on Louisiana Coordinate System of 1927, (North or South Zone), where applicable.

NOTE: The above description of the Tract nominated for lease has been provided and corrected, where required, exclusively by the nomination party. Any mineral lease selected from this Tract and awarded by the Louisiana State Mineral and Energy Board shall be without warranty of any kind, either express, implied, or statutory, including, but not limited to, the implied warranties of merchantability and fitness for a particular purpose. Should the mineral lease awarded by the Louisiana State Mineral and Energy Board be subsequently modified, cancelled or abrogated due to the existence of conflicting leases, operating agreements, private claims or other future obligations or conditions which may affect all or any portion of the leased Tract, it shall not relieve the Lessee of the obligation to pay any bonus due thereon to the Louisiana State Mineral and Energy Board, nor shall the Louisiana State Mineral and Energy Board be obligated to refund any consideration paid by the Lessor prior to such modification, cancellation, or abrogation, including, but not limited to, bonuses, rentals and royalties.

NOTE: The Office of Mineral Resources will require a minimum bonus of \$250 per acre and a minimum royalty of 22.5%.

NOTE: A portion of this tract is located on or adjacent to a Louisiana designated Natural and Scenic River. The applicant must obtain authorization from the Louisiana Department of Wildlife and Fisheries, Scenic Rivers Program prior to initiating any activities within or adjacent to the river, including, but not limited to, crossings by roads and pipelines, well sites, production facilities and water withdrawals.

Applicant: STAFF OFFICE OF MINERAL RESOURCES

Bidder	Cash Payment	Price/Acre	Rental	Oil	Gas	Other

Legend
14080005



ST HELENA

T1S - R5E

T2S - R6E

P.O.B.

TICKFAW RIVER



TRACT 44021 - East Feliciana and St. Helena Parishes, Louisiana

All of the lands now or formerly constituting the beds and bottoms of all water bodies of every nature and description as to which title is vested in the State of Louisiana, together with all islands arising therein and other lands formed by accretion or by reliction, where allowed by law, excepting tax adjudicated lands, and not presently under mineral lease on August 13, 2014, situated in East Feliciana and St. Helena Parishes, Louisiana, and more particularly described as follows: Beginning at a point having Coordinates of X = 2,154,250.00 and Y = 806,000.00; thence West 7,850.00 feet to a point having Coordinates of X = 2,146,400.00 and Y = 806,000.00; thence North 13,555.00 feet to a point on the South line of State Lease No. 20537 having Coordinates of X = 2,146,400.00 and Y = 819,555.00; thence East 7,850.00 feet along the South line of said State Lease No. 20537 to a point having Coordinates of X = 2,154,250.00 and Y = 819,555.00; thence South 13,555.00 feet to the point of beginning, containing approximately **82 acres**, all as more particularly outlined on a plat on file in the Office of Mineral Resources, Department of Natural Resources. All bearings, distances and coordinates are based on Louisiana Coordinate System of 1927, (North or South Zone), where applicable.

NOTE: The above description of the Tract nominated for lease has been provided and corrected, where required, exclusively by the nomination party. Any mineral lease selected from this Tract and awarded by the Louisiana State Mineral and Energy Board shall be without warranty of any kind, either express, implied, or statutory, including, but not limited to, the implied warranties of merchantability and fitness for a particular purpose. Should the mineral lease awarded by the Louisiana State Mineral and Energy Board be subsequently modified, cancelled or abrogated due to the existence of conflicting leases, operating agreements, private claims or other future obligations or conditions which may affect all or any portion of the leased Tract, it shall not relieve the Lessee of the obligation to pay any bonus due thereon to the Louisiana State Mineral and Energy Board, nor shall the Louisiana State Mineral and Energy Board be obligated to refund any consideration paid by the Lessor prior to such modification, cancellation, or abrogation, including, but not limited to, bonuses, rentals and royalties.

NOTE: The Office of Mineral Resources will require a minimum bonus of \$250 per acre and a minimum royalty of 22.5%.

NOTE: A portion of this tract is located on or adjacent to a Louisiana designated Natural and Scenic River. The applicant must obtain authorization from the Louisiana Department of Wildlife and Fisheries, Scenic Rivers Program prior to initiating any activities within or adjacent to the river, including, but not limited to, crossings by roads and pipelines, well sites, production facilities and water withdrawals.

Applicant: STAFF OFFICE OF MINERAL RESOURCES

Bidder	Cash Payment	Price/Acre	Rental	Oil	Gas	Other

Legend

14080006

Active_Leases

Counties



0 3,000 Feet

EAST FELICIANA

ST HELENA

SL 20537

T1S - R4E

T2S - R3E

P.O.B.

AMITE RIVER



TRACT 44022 - St. Helena Parish, Louisiana

All of the lands now or formerly constituting the beds and bottoms of all water bodies of every nature and description as to which title is vested in the State of Louisiana, together with all islands arising therein and other lands formed by accretion or by reliction, where allowed by law, excepting tax adjudicated lands, and not presently under mineral lease on August 13, 2014, situated in St. Helena Parish, Louisiana, and more particularly described as follows: Beginning at a point having Coordinates of X = 2,156,000.00 and Y = 806,000.00; thence East 11,000.00 feet to a point having Coordinates of X = 2,167,000.00 and Y = 806,000.00; thence South 14,400.00 feet to a point having Coordinates of X = 2,167,000.00 and Y = 791,600.00; thence West 11,000.00 feet to a point having Coordinates of X = 2,156,000.00 and Y = 791,600.00; thence North 14,400.00 feet to the point of beginning, containing approximately **28 acres**, all as more particularly outlined on a plat on file in the Office of Mineral Resources, Department of Natural Resources. All bearings, distances and coordinates are based on Louisiana Coordinate System of 1927, (North or South Zone), where applicable.

NOTE: The above description of the Tract nominated for lease has been provided and corrected, where required, exclusively by the nomination party. Any mineral lease selected from this Tract and awarded by the Louisiana State Mineral and Energy Board shall be without warranty of any kind, either express, implied, or statutory, including, but not limited to, the implied warranties of merchantability and fitness for a particular purpose. Should the mineral lease awarded by the Louisiana State Mineral and Energy Board be subsequently modified, cancelled or abrogated due to the existence of conflicting leases, operating agreements, private claims or other future obligations or conditions which may affect all or any portion of the leased Tract, it shall not relieve the Lessee of the obligation to pay any bonus due thereon to the Louisiana State Mineral and Energy Board, nor shall the Louisiana State Mineral and Energy Board be obligated to refund any consideration paid by the Lessor prior to such modification, cancellation, or abrogation, including, but not limited to, bonuses, rentals and royalties.

NOTE: The Office of Mineral Resources will require a minimum bonus of \$250 per acre and a minimum royalty of 22.5%.

Applicant: STAFF OFFICE OF MINERAL RESOURCES

Bidder	Cash Payment	Price/Acre	Rental	Oil	Gas	Other

Legend
14080007

DARLING CREEK

ST HELENA

T2S - R4E

P.O.B.

0 3,000 Feet



TRACT 44023 - St. Helena Parish, Louisiana

All of the lands now or formerly constituting the beds and bottoms of all water bodies of every nature and description as to which title is vested in the State of Louisiana, together with all islands arising therein and other lands formed by accretion or by reliction, where allowed by law, excepting tax adjudicated lands, and not presently under mineral lease on August 13, 2014, situated in St. Helena Parish, Louisiana, and more particularly described as follows: Beginning at a point having Coordinates of X = 2,219,050.00 and Y = 803,400.00; thence South 11,350.00 feet to a point having Coordinates of X = 2,219,050.00 and Y = 792,050.00; thence West 10,000.00 feet to a point having Coordinates of X = 2,209,050.00 and Y = 792,050.00; thence North 11,350.00 feet to a point having Coordinates of X = 2,209,050.00 and Y = 803,400.00; thence East 10,000.00 feet to the point of beginning, containing approximately **26 acres**, all as more particularly outlined on a plat on file in the Office of Mineral Resources, Department of Natural Resources. All bearings, distances and coordinates are based on Louisiana Coordinate System of 1927, (North or South Zone), where applicable.

NOTE: The above description of the Tract nominated for lease has been provided and corrected, where required, exclusively by the nomination party. Any mineral lease selected from this Tract and awarded by the Louisiana State Mineral and Energy Board shall be without warranty of any kind, either express, implied, or statutory, including, but not limited to, the implied warranties of merchantability and fitness for a particular purpose. Should the mineral lease awarded by the Louisiana State Mineral and Energy Board be subsequently modified, cancelled or abrogated due to the existence of conflicting leases, operating agreements, private claims or other future obligations or conditions which may affect all or any portion of the leased Tract, it shall not relieve the Lessee of the obligation to pay any bonus due thereon to the Louisiana State Mineral and Energy Board, nor shall the Louisiana State Mineral and Energy Board be obligated to refund any consideration paid by the Lessor prior to such modification, cancellation, or abrogation, including, but not limited to, bonuses, rentals and royalties.

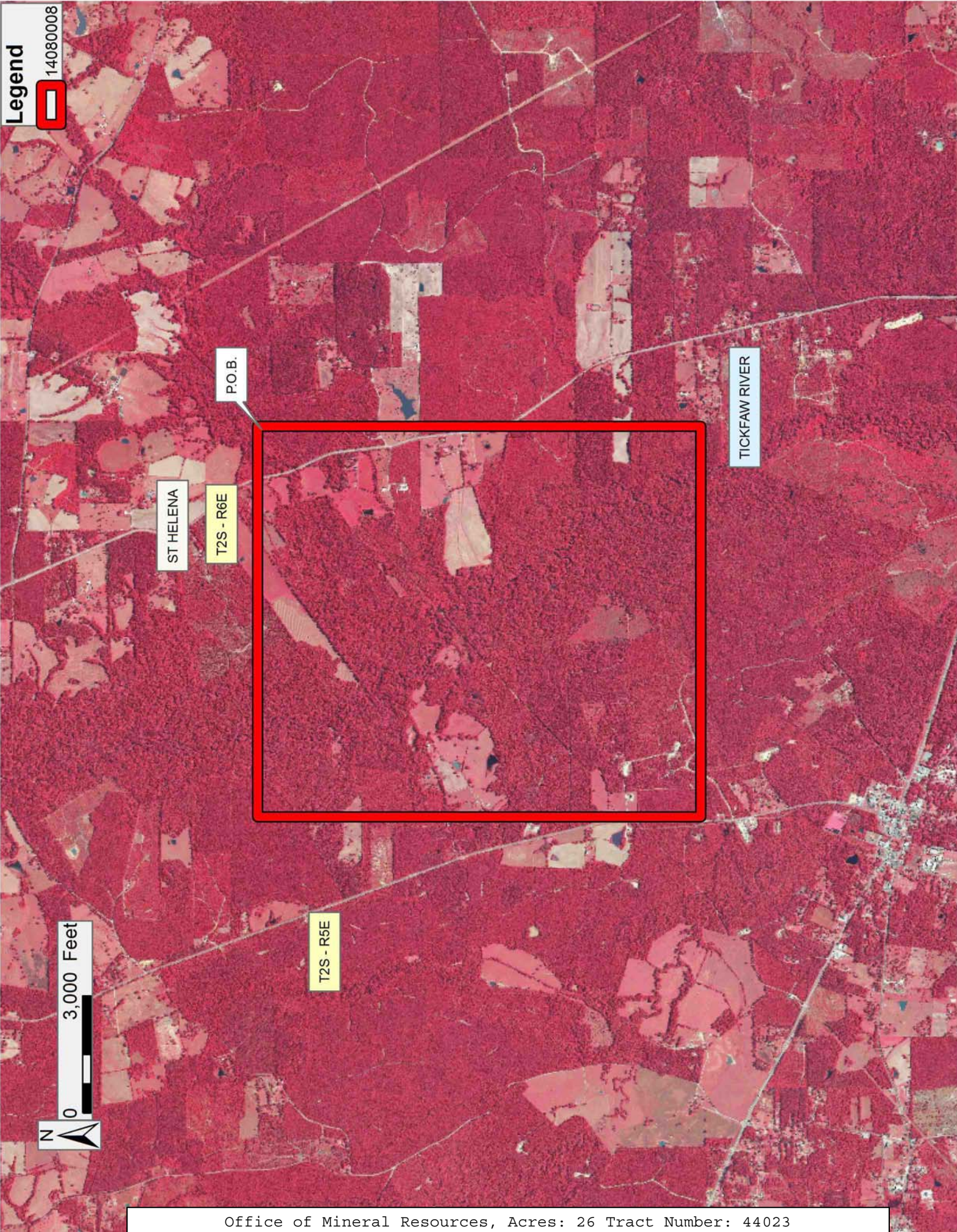
NOTE: The Office of Mineral Resources will require a minimum bonus of \$250 per acre and a minimum royalty of 22.5%.

NOTE: A portion of this tract is located on or adjacent to a Louisiana designated Natural and Scenic River. The applicant must obtain authorization from the Louisiana Department of Wildlife and Fisheries, Scenic Rivers Program prior to initiating any activities within or adjacent to the river, including, but not limited to, crossings by roads and pipelines, well sites, production facilities and water withdrawals.

Applicant: STAFF OFFICE OF MINERAL RESOURCES

Bidder	Cash Payment	Price/Acre	Rental	Oil	Gas	Other

Legend
14080008



P.O.B.

ST HELENA

T2S - R6E

TICKFAW RIVER

T2S - R5E

