

TRACT 44039 - Caddo Parish, Louisiana

A certain Tract of land, excluding the beds and bottoms of all navigable waters, belonging to and not presently under mineral lease from Caddo Parish Commission on August 13, 2014, being more fully described as follows: Certain road dedication located in Section 14, Township 19 North, Range 15 West, known as Double "D" Drive, as described in the subdivision plat Louanne Subdivision found in Book 1700, at page 459, records of Caddo Parish, **limited to the depths below 3,000 feet below the surface**, and containing **3 acres**, all as more particularly outlined on a plat on file in the Office of Mineral Resources, Department of Natural Resources. The description is based on information provided by the State Agency regarding location and ownership of surface and mineral rights. All bearings, distances and coordinates, if applicable, are based on Louisiana Coordinate System of 1927, (North or South Zone).

NOTE: The above description of the Tract nominated for lease has been provided and corrected, where required, exclusively by the nomination party. Any mineral lease selected from this Tract and awarded by the Louisiana State Mineral and Energy Board shall be without warranty of any kind, either express, implied, or statutory, including, but not limited to, the implied warranties of merchantability and fitness for a particular purpose. Should the mineral lease awarded by the Louisiana State Mineral and Energy Board be subsequently modified, cancelled or abrogated due to the existence of conflicting leases, operating agreements, private claims or other future obligations or conditions which may affect all or any portion of the leased Tract, it shall not relieve the Lessee of the obligation to pay any bonus due thereon to the Louisiana State Mineral and Energy Board, nor shall the Louisiana State Mineral and Energy Board be obligated to refund any consideration paid by the Lessor prior to such modification, cancellation, or abrogation, including, but not limited to, bonuses, rentals and royalties.

NOTE: Lessee, its successors or assigns, may produce oil, gas and other minerals from the leased premises by drilling from a surface location on other lands, but notwithstanding any other provision of this lease, Lessee, its successors or assigns, shall not use the surface location of the Lessor's property for drilling or any other operations without prior written permission of Lessor, which permission may be withheld at Lessor's discretion.

NOTE: Notwithstanding anything to the contrary herein contained, at the end of the primary term or any extension thereof by operations, if the Commissioner of Conservation of the State of Louisiana establishes a drilling unit which includes a part of the land herein leased, the production of oil, gas and other minerals from such unit shall maintain this lease in full force and effect only as to such portions of the leased land embraced in said pooled unit; and this lease shall expire as to that part of the land herein leased not included in such unit; and Lessee, its successors and assigns agrees to relinquish by formal instrument any

portion of the leased land not included in a unit created by the Commissioner of Conservation while this lease is in effect.

NOTE: Upon the expiration of the primary term hereof or any extension thereof by operations, this lease shall automatically terminate and be of no further force or effect except as to all that part of the leased premises then included within the geographical boundaries of a producing unit duly established by governmental agency or authority having jurisdiction, from the surface of the earth to a depth of 100 feet below the deepest depth from which any well commenced during the primary term hereof on the leased premises or on lands pooled therewith is completed and from which there is production in paying quantities, such depth determination to be made on a unit by unit basis. In the absence of units so established, this lease shall terminate except as to 40 acres around each producing oil well and 160 acres around each producing or shut-in gas well located on the leased premises, in as near the form of a square as is practicable, from the surface of the earth down to a depth of 100 feet below the deepest depth from which said well or wells are completed and from which there is production in paying quantities, such depth determination to be made on a well by well basis.

NOTE: The Caddo Parish Commission will require a minimum royalty of 25%.

NOTE: The Caddo Parish Commission will require a minimum bonus provision of \$500.00 per acre.

NOTE: Caddo Parish Commission hereby reserves until itself and excludes from any such lease all mineral rights from the surface down to a depth of 3,000 feet subsurface.

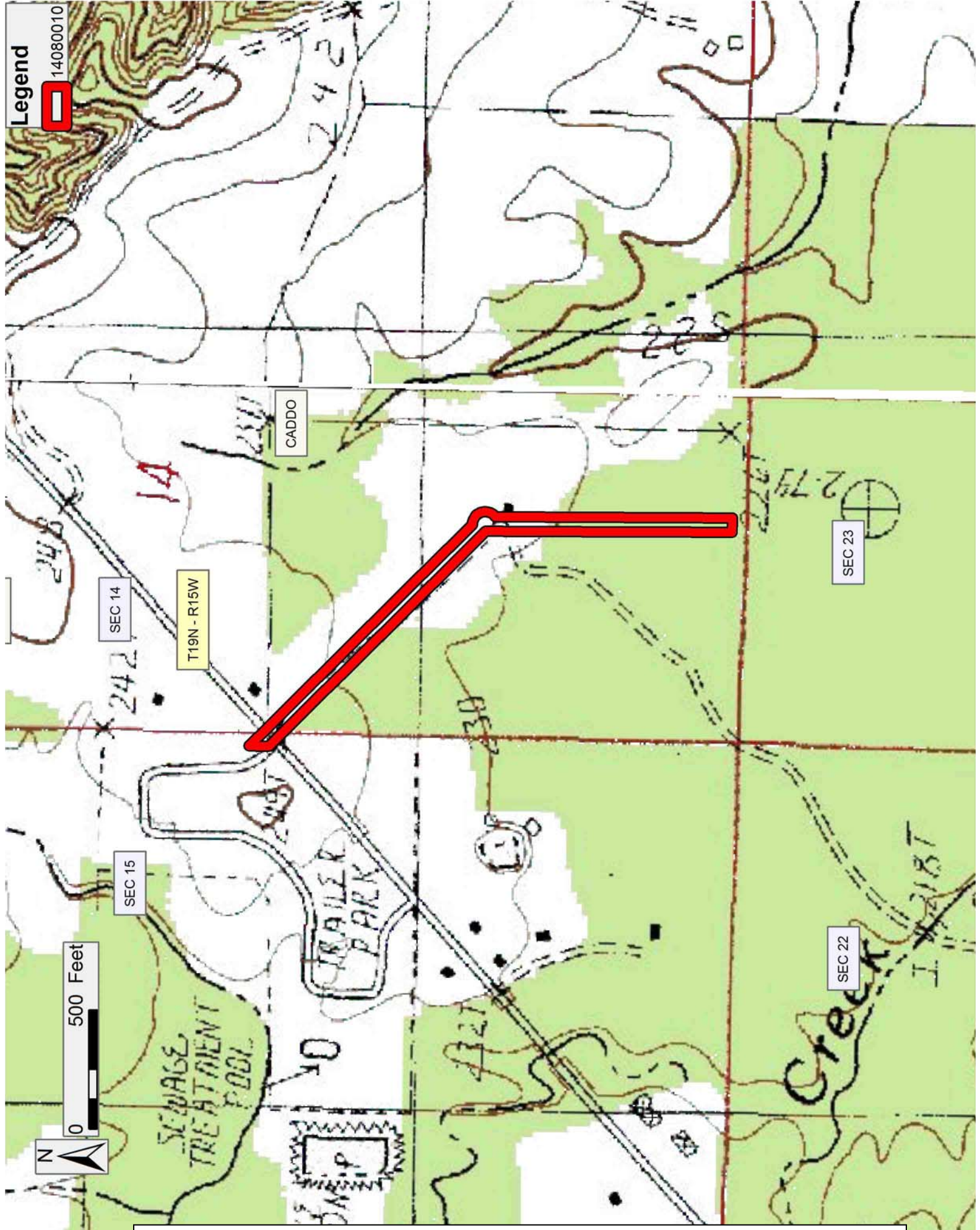
NOTE: Lessee agrees that all production royalties due and payable under this oil, gas and mineral lease shall be due and payable and calculated from the date that the production of oil, gas and other hydrocarbons first occurs from any unit, whether voluntary or established by the Commissioner of Conservation, in which all or any part of the property herein described is included, even if said production occurs prior to the effective date of this lease.

NOTE: Primary term of lease shall not exceed three (3) years.

Applicant: TACOMA ENERGY CORPORATION to Agency and by Resolution from the Caddo Parish Commission authorizing the Mineral Board to act in its behalf

Bidder	Cash Payment	Price/Acre	Rental	Oil	Gas	Other

Legend
14080010



TRACT 44040 - Plaquemines Parish, Louisiana

A certain Tract of land, excluding the beds and bottoms of all navigable waters, belonging to and not presently under mineral lease from Orleans Levee District on August 13, 2014, being more fully described as follows:

All of Section 15, 22, 23, 26, 27, 28, and the North Half (N/2) and Southeast Quarter (SE/4) of Section 21, Township 18 South, Range 16 East, **LESS AND EXCEPT**, that certain tract or parcel of land containing 364.00 acres, and being subject to that certain State Agency Lease No. 21385, dated March 12, 2014, in favor of K Exploration Co. The above described lands contain approximately **638 acres**, all as more particularly outlined on a plat on file in the Office of Mineral Resources, Department of Natural Resources. The description is based on information provided by the State Agency regarding location and ownership of surface and mineral rights. All bearings, distances and coordinates, if applicable, are based on Louisiana Coordinate System of 1927, (North or South Zone).

NOTE: The above description of the Tract nominated for lease has been provided and corrected, where required, exclusively by the nomination party. Any mineral lease selected from this Tract and awarded by the Louisiana State Mineral and Energy Board shall be without warranty of any kind, either express, implied, or statutory, including, but not limited to, the implied warranties of merchantability and fitness for a particular purpose. Should the mineral lease awarded by the Louisiana State Mineral and Energy Board be subsequently modified, cancelled or abrogated due to the existence of conflicting leases, operating agreements, private claims or other future obligations or conditions which may affect all or any portion of the leased Tract, it shall not relieve the Lessee of the obligation to pay any bonus due thereon to the Louisiana State Mineral and Energy Board, nor shall the Louisiana State Mineral and Energy Board be obligated to refund any consideration paid by the Lessor prior to such modification, cancellation, or abrogation, including, but not limited to, bonuses, rentals and royalties.

NOTE: This tract is located in an area designated by the Louisiana Legislature or the Wildlife and Fisheries Commission as a Public Oyster Seed Ground, Reservation, or area of Calcasieu or Sabine Lake. Proposed projects occurring in these areas will be evaluated on a case by case basis by Louisiana Department of Wildlife & Fisheries. Modifications to proposed project features including, but not limited to, access routes, well sites, flowlines, and appurtenant structures maybe required by the Louisiana Department of Wildlife and Fisheries. In addition, compensatory mitigation will be required to offset unavoidable habitat impacts.

Applicant: SPILLWAY ENERGY PARTNERS to Agency and by Resolution from the Orleans Levee District authorizing the Mineral Board to act in its behalf

Bidder	Cash Payment	Price/Acre	Rental	Oil	Gas	Other

Legend

14080016



0 3,000 Feet

PLAQUEMINES

CALIFORNIA

BAY

BAY

CALIFORNIA

BAY

T18S - R16E

SEC 10

SEC 12

SEC 13

SEC 15

SEC 17

SEC 18

TRACT 44041 - Plaquemines Parish, Louisiana

A certain Tract of land, excluding the beds and bottoms of all navigable waters, belonging to and not presently under mineral lease from Orleans Levee District on August 13, 2014, being more fully described as follows: All of Section 36, Township 18 South, Range 16 East and the North Half (N/2) of Section 1, Township 19 South, Range 16 East. The above described lands contain approximately **209 acres**, all as more particularly outlined on a plat on file in the Office of Mineral Resources, Department of Natural Resources. The description is based on information provided by the State Agency regarding location and ownership of surface and mineral rights. All bearings, distances and coordinates, if applicable, are based on Louisiana Coordinate System of 1927, (North or South Zone).

NOTE: The above description of the Tract nominated for lease has been provided and corrected, where required, exclusively by the nomination party. Any mineral lease selected from this Tract and awarded by the Louisiana State Mineral and Energy Board shall be without warranty of any kind, either express, implied, or statutory, including, but not limited to, the implied warranties of merchantability and fitness for a particular purpose. Should the mineral lease awarded by the Louisiana State Mineral and Energy Board be subsequently modified, cancelled or abrogated due to the existence of conflicting leases, operating agreements, private claims or other future obligations or conditions which may affect all or any portion of the leased Tract, it shall not relieve the Lessee of the obligation to pay any bonus due thereon to the Louisiana State Mineral and Energy Board, nor shall the Louisiana State Mineral and Energy Board be obligated to refund any consideration paid by the Lessor prior to such modification, cancellation, or abrogation, including, but not limited to, bonuses, rentals and royalties.

NOTE: This tract is located in an area designated by the Louisiana Legislature or the Wildlife and Fisheries Commission as a Public Oyster Seed Ground, Reservation, or area of Calcasieu or Sabine Lake. Proposed projects occurring in these areas will be evaluated on a case by case basis by Louisiana Department of Wildlife & Fisheries. Modifications to proposed project features including, but not limited to, access routes, well sites, flowlines, and appurtenant structures maybe required by the Louisiana Department of Wildlife and Fisheries. In addition, compensatory mitigation will be required to offset unavoidable habitat impacts.

Applicant: SPILLWAY ENERGY PARTNERS to Agency and by Resolution from the Orleans Levee District authorizing the Mineral Board to act in its behalf

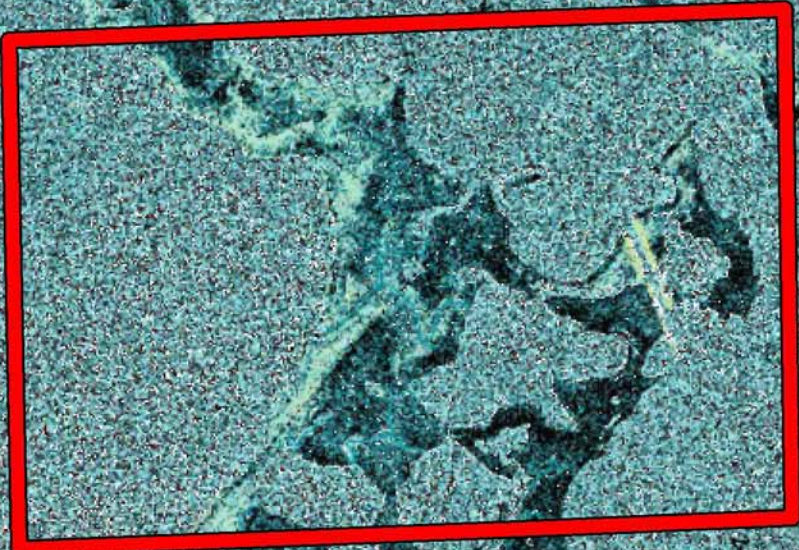
Bidder	Cash Payment	Price/Acre	Rental	Oil	Gas	Other

Legend
14080018

PLAQUEMINES



California Point



Gravel Bay

ALLEN

84

84

84

84

84

84

84

84

84

84

84

84

84

84

84

84

84

84

TRACT 44042 - Plaquemines Parish, Louisiana

A certain Tract of land, excluding the beds and bottoms of all navigable waters, belonging to and not presently under mineral lease from Orleans Levee District on August 13, 2014, being more fully described as follows: All of River Lots or Radiating Sections 2, 3, 4, 5, and 6, Township 19 South, Range 16 East. The above described lands contain approximately **589 acres**, all as more particularly outlined on a plat on file in the Office of Mineral Resources, Department of Natural Resources. The description is based on information provided by the State Agency regarding location and ownership of surface and mineral rights. All bearings, distances and coordinates, if applicable, are based on Louisiana Coordinate System of 1927, (North or South Zone).

NOTE: The above description of the Tract nominated for lease has been provided and corrected, where required, exclusively by the nomination party. Any mineral lease selected from this Tract and awarded by the Louisiana State Mineral and Energy Board shall be without warranty of any kind, either express, implied, or statutory, including, but not limited to, the implied warranties of merchantability and fitness for a particular purpose. Should the mineral lease awarded by the Louisiana State Mineral and Energy Board be subsequently modified, cancelled or abrogated due to the existence of conflicting leases, operating agreements, private claims or other future obligations or conditions which may affect all or any portion of the leased Tract, it shall not relieve the Lessee of the obligation to pay any bonus due thereon to the Louisiana State Mineral and Energy Board, nor shall the Louisiana State Mineral and Energy Board be obligated to refund any consideration paid by the Lessor prior to such modification, cancellation, or abrogation, including, but not limited to, bonuses, rentals and royalties.

Applicant: SPILLWAY ENERGY PARTNERS to Agency and by Resolution from the Orleans Levee District authorizing the Mineral Board to act in its behalf

Bidder	Cash Payment	Price/Acre	Rental	Oil	Gas	Other

Legend
14080017



PLAQUEMINES

T18S - R16E

SEC 2

SEC 3

SEC 4

SEC 5

T19S - R16E



MISSISSIPPI

TRACT 44043 - Plaquemines Parish, Louisiana

A certain Tract of land, excluding the beds and bottoms of all navigable waters, belonging to and not presently under mineral lease from Orleans Levee District on August 13, 2014, being more fully described as follows: TOWNSHIP 19 South RANGE 16 East, all of SECTION 11; all of SECTION 12; and the North East QUARTER (NE/4) of SECTION 13: The above described lands contain approximately **412 acres**, all as more particularly outlined on a plat on file in the Office of Mineral Resources, Department of Natural Resources. The description is based on information provided by the State Agency regarding location and ownership of surface and mineral rights. All bearings, distances and coordinates, if applicable, are based on Louisiana Coordinate System of 1927, (North or South Zone).

NOTE: The above description of the Tract nominated for lease has been provided and corrected, where required, exclusively by the nomination party. Any mineral lease selected from this Tract and awarded by the Louisiana State Mineral and Energy Board shall be without warranty of any kind, either express, implied, or statutory, including, but not limited to, the implied warranties of merchantability and fitness for a particular purpose. Should the mineral lease awarded by the Louisiana State Mineral and Energy Board be subsequently modified, cancelled or abrogated due to the existence of conflicting leases, operating agreements, private claims or other future obligations or conditions which may affect all or any portion of the leased Tract, it shall not relieve the Lessee of the obligation to pay any bonus due thereon to the Louisiana State Mineral and Energy Board, nor shall the Louisiana State Mineral and Energy Board be obligated to refund any consideration paid by the Lessor prior to such modification, cancellation, or abrogation, including, but not limited to, bonuses, rentals and royalties.

NOTE: This tract is located in an area designated by the Louisiana Legislature or the Wildlife and Fisheries Commission as a Public Oyster Seed Ground, Reservation, or area of Calcasieu or Sabine Lake. Proposed projects occurring in these areas will be evaluated on a case by case basis by Louisiana Department of Wildlife & Fisheries. Modifications to proposed project features including, but not limited to, access routes, well sites, flowlines, and appurtenant structures maybe required by the Louisiana Department of Wildlife and Fisheries. In addition, compensatory mitigation will be required to offset unavoidable habitat impacts.

Applicant: SPILLWAY ENERGY PARTNERS to Agency and by Resolution from the Orleans Levee District authorizing the Mineral Board to act in its behalf

Bidder	Cash Payment	Price/Acre	Rental	Oil	Gas	Other

Legend
14080019



PLAQUEMINES

T19S - R16E

SEC 4

SEC 5

SEC 8

SEC 11

