

TRACT 44063 - St. Mary Parish, Louisiana

A portion of all lands located above the mean high water mark, together with lands now or formerly constituting the beds and bottoms of any water body of whatever description or nature belonging to the State of Louisiana which is now located within the boundaries of the Atchafalaya Delta Wildlife Management Area and not presently under mineral lease by the State of Louisiana on September 10, 2014, and more particularly located as follows: Beginning at a point within the Atchafalaya Delta Wildlife Management having Coordinates of X = 1,951,728.00 and Y = 290,548.00; thence South 5,418.15 feet to a point having Coordinates of X = 1,951,728.00 and Y = 285,129.85; thence West 18,480.00 feet to a point on the East boundary of said State Lease No. 340 having Coordinates of X = 1,933,248.00 and Y = 285,129.85; thence along the boundaries of said State Lease No. 340 the following courses: North 5,418.15 feet to a point having Coordinates of X = 1,933,248.00 and Y = 290,548.00 and East 4,057.29 feet to a point having Coordinates of X = 1,937,305.29 and Y = 290,548.00; thence continue East 14,422.71 feet to the point of beginning, **LESS AND EXCEPT** that portion, if any, of State Lease No. 340, as amended, which may lie within the above described tract, and, **LESS AND EXCEPT** any and all portions of the above described property that may fall outside Atchafalaya Delta Wildlife Management Area, containing approximately **2,298.61 acres**, all as more particularly outlined on a plat on file in the Office of Mineral Resources, Department of Natural Resources. All bearings, distances and coordinates are based on Louisiana Coordinate System of 1927, (South Zone).

NOTE: The above description of the Tract nominated for lease has been provided and corrected, where required, exclusively by the nomination party. Any mineral lease selected from this Tract and awarded by the Louisiana State Mineral and Energy Board shall be without warranty of any kind, either express, implied, or statutory, including, but not limited to, the implied warranties of merchantability and fitness for a particular purpose. Should the mineral lease awarded by the Louisiana State Mineral and Energy Board be subsequently modified, cancelled or abrogated due to the existence of conflicting leases, operating agreements, private claims or other future obligations or conditions which may affect all or any portion of the leased Tract, it shall not relieve the Lessee of the obligation to pay any bonus due thereon to the Louisiana State Mineral and Energy Board, nor shall the Louisiana State Mineral and Energy Board be obligated to refund any consideration paid by the Lessor prior to such modification, cancellation, or abrogation, including, but not limited to, bonuses, rentals and royalties.

NOTE: The mineral lease is located in the Atchafalaya Delta WMA under the jurisdiction of the Louisiana Department of Wildlife and Fisheries which has promulgated rules and regulations for the protection of game and wildlife on the aforesaid Tract and, therefore, shall be subject to said rules and regulations, a copy of which shall be attached to the mineral leases. In addition to the specific rules and regulations applicable, the following shall apply regarding operations under this mineral lease:

- No activities will be allowed without written authorization of the Louisiana Department of Wildlife and Fisheries.
- Proposed projects will be evaluated on a case by case basis. Modifications to proposed project features including but not limited to access routes, spoil placement, well sites, flowlines and appurtenant structures may be required by the Department of Wildlife and Fisheries.
- Compliance with the Atchafalaya Delta WMA regulations will be required unless otherwise specified by the Department of Wildlife and Fisheries.
- Compensatory mitigation will be required to offset unavoidable wetland impacts.
- Compensation and/or oyster seed ground surveys may be required by the Department for potential impacts to productive oyster seed grounds located within the management area.
- Removal of all structures, facilities and equipment will be required within 120 days of abandonment unless otherwise agreed to in writing by the Louisiana Department of Wildlife and Fisheries.
- No activities will be allowed during the hunting season unless approved by the Department.
- This tract is located within the emerging Atchafalaya Delta. No activities will be allowed on emergent islands, sub aerial mudflats or vegetated wetlands. Drilling will be restricted to passes and open water bays. The Louisiana Department of Wildlife and Fisheries (LDWF) shall have discretion to determine access routes. In the event that LDWF approves of dredging for access, LDWF shall have discretion to require hydraulic or spray dredging to reduce environmental impacts.
- Prior to submitting application for wetland permits to Federal and State permitting agencies the leaseholder shall coordinate project details with the Department of Wildlife and Fisheries. Contact person for the Department will be Mike Windham at (504)284-5268.

Additionally, the Department will require a minimum bonus of \$350.00 per acre and a minimum royalty of 25%.

NOTE: The above described tract may be in the vicinity of existing shell reefs where drilling and dredging operations must be conducted in strict conformity with the regulations adopted by the Louisiana Department of Wildlife and Fisheries and/or the U.S. Corps of Engineers, U.S. Army.

NOTE: The State of Louisiana does hereby reserve, and this lease shall be subject to, the imprescriptible right of surface use in the nature of a servitude in favor of the Department of Natural Resources, including its Offices and Commissions, for the sole purpose of implementing, constructing, servicing and maintaining approved coastal zone management

and/or restoration projects. Utilization of any and all rights derived under this lease by the mineral lessee, its agents, successors or assigns, shall not interfere with nor hinder the reasonable surface use by the Department of Natural Resources, its Offices or Commissions, as herein above reserved.

NOTE: This tract is located in an area designated by the Louisiana Legislature or the Wildlife and Fisheries Commission as a Public Oyster Seed Ground, Reservation, or area of Calcasieu or Sabine Lake. Proposed projects occurring in these areas will be evaluated on a case by case basis by Louisiana Department of Wildlife & Fisheries. Modifications to proposed project features including, but not limited to, access routes, well sites, flowlines, and appurtenant structures maybe required by the Louisiana Department of Wildlife and Fisheries. In addition, compensatory mitigation will be required to offset unavoidable habitat impacts.

Applicant: LESLIE M. COOPER

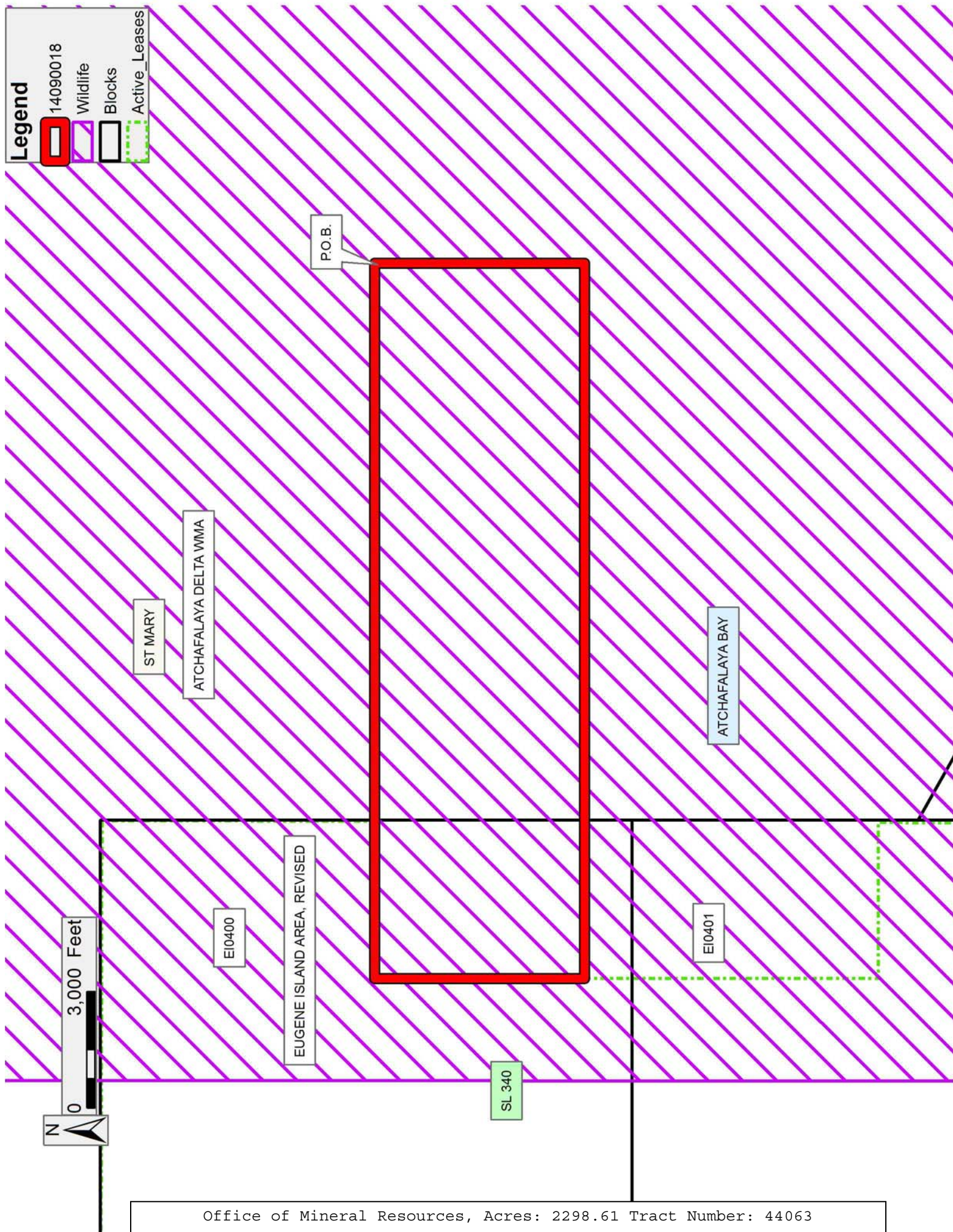
Bidder	Cash Payment	Price/Acre	Rental	Oil	Gas	Other

Legend

- 14090018
- Wildlife
- Blocks
- Active_Leases



3,000 Feet



TRACT 44064 - St. Mary Parish, Louisiana

A portion of all lands located above the mean high water mark, together with lands now or formerly constituting the beds and bottoms of any water body of whatever description or nature belonging to the State of Louisiana which is now located within the boundaries of the Atchafalaya Delta Wildlife Management Area and not presently under mineral lease by the State of Louisiana on September 10, 2014, and more particularly located as follows: Beginning at a point within the Atchafalaya Delta Wildlife Management Area having Coordinates of X = 1,951,728.00 and Y = 290,548.00; thence East 16,045.63 feet to a point having Coordinates of X = 1,967,773.63 and Y = 290,548.00; thence South 78 degrees 40 minutes 33 seconds East 1,931.50 feet to a point having Coordinates of X = 1,969,667.52 and Y = 290,168.73; thence South 5,802.92 feet to a point on the North boundary of State Lease No. 21351 having Coordinates of X = 1,969,667.52 and Y = 284,365.82; thence along the Northern boundary of said State Lease No. 21351 the following courses: North 61 degrees 24 minutes 53 seconds West 1,155.07 feet to a point having Coordinates of X = 1,968,653.24 and Y = 284,918.48 and South 53 degrees 51 minutes 42 seconds West 1,027.34 feet to a point on the North boundary of State Lease No. 20219 having Coordinates of X = 1,967,823.56 and Y = 284,312.62; thence along the North boundaries of said State Lease No. 20219 the following courses: North 72 degrees 36 minutes 09 seconds West 24.69 feet to a point having Coordinates of X = 1,967,800.00 and Y = 284,320.00 and West 3,800.00 feet to its Northwest corner having Coordinates of X = 1,964,000.00 and Y = 284,320.00; thence North 609.85 feet to a point having Coordinates of X = 1,964,000.00 and Y = 284,929.85; thence West 12,272.00 feet to a point having Coordinates of X = 1,951,728.00 and Y = 285,129.85; thence North 5,618.15 feet to the point of beginning, containing approximately **2,371.72 acres**, all as more particularly outlined on a plat on file in the Office of Mineral Resources, Department of Natural Resources. All bearings, distances and coordinates are based on Louisiana Coordinate System of 1927, (South Zone).

NOTE: The above description of the Tract nominated for lease has been provided and corrected, where required, exclusively by the nomination party. Any mineral lease selected from this Tract and awarded by the Louisiana State Mineral and Energy Board shall be without warranty of any kind, either express, implied, or statutory, including, but not limited to, the implied warranties of merchantability and fitness for a particular purpose. Should the mineral lease awarded by the Louisiana State Mineral and Energy Board be subsequently modified, cancelled or abrogated due to the existence of conflicting leases, operating agreements, private claims or other future obligations or conditions which may affect all or any portion of the leased Tract, it shall not relieve the Lessee of the obligation to pay any bonus due thereon to the Louisiana State Mineral and Energy Board, nor shall the Louisiana State Mineral and Energy Board be obligated to refund any consideration paid by the Lessor prior to such modification, cancellation, or abrogation, including, but not limited to, bonuses, rentals and royalties.

NOTE: The mineral lease is located in the Atchafalaya Delta WMA under the jurisdiction of the Louisiana Department of Wildlife and Fisheries which has promulgated rules and regulations for the protection of game and wildlife on the aforesaid Tract and, therefore, shall be subject to said rules and regulations, a copy of which shall be attached to the mineral leases. In addition to the specific rules and regulations applicable, the following shall apply regarding operations under this mineral lease:

- No activities will be allowed without written authorization of the Louisiana Department of Wildlife and Fisheries.
- Proposed projects will be evaluated on a case by case basis. Modifications to proposed project features including but not limited to access routes, spoil placement, well sites, flowlines and appurtenant structures may be required by the Department of Wildlife and Fisheries.
- Compliance with the Atchafalaya Delta WMA regulations will be required unless otherwise specified by the Department of Wildlife and Fisheries.
- Compensatory mitigation will be required to offset unavoidable wetland impacts.
- Compensation and/or oyster seed ground surveys may be required by the Department for potential impacts to productive oyster seed grounds located within the management area.
- Removal of all structures, facilities and equipment will be required within 120 days of abandonment unless otherwise agreed to in writing by the Louisiana Department of Wildlife and Fisheries.
- No activities will be allowed during the hunting season unless approved by the Department.
- This tract is located within the emerging Atchafalaya Delta. No activities will be allowed on emergent islands, sub aerial mudflats or vegetated wetlands. Drilling will be restricted to passes and open water bays. The Louisiana Department of Wildlife and Fisheries (LDWF) shall have discretion to determine access routes. In the event that LDWF approves of dredging for access, LDWF shall have discretion to require hydraulic or spray dredging to reduce environmental impacts.
- Prior to submitting application for wetland permits to Federal and State permitting agencies the leaseholder shall coordinate project details with the Department of Wildlife and Fisheries. Contact person for the Department will be Mike Windham at (504)284-5268.

Additionally, the Department will require a minimum bonus of \$350.00 per acre and a minimum royalty of 25%.

NOTE: The above described tract may be in the vicinity of existing shell reefs where drilling and dredging operations must be conducted in strict

conformity with the regulations adopted by the Louisiana Department of Wildlife and Fisheries and/or the U.S. Corps of Engineers, U.S. Army.

NOTE: The State of Louisiana does hereby reserve, and this lease shall be subject to, the imprescriptible right of surface use in the nature of a servitude in favor of the Department of Natural Resources, including its Offices and Commissions, for the sole purpose of implementing, constructing, servicing and maintaining approved coastal zone management and/or restoration projects. Utilization of any and all rights derived under this lease by the mineral lessee, its agents, successors or assigns, shall not interfere with nor hinder the reasonable surface use by the Department of Natural Resources, its Offices or Commissions, as herein above reserved.

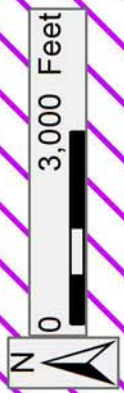
NOTE: This tract is located in an area designated by the Louisiana Legislature or the Wildlife and Fisheries Commission as a Public Oyster Seed Ground, Reservation, or area of Calcasieu or Sabine Lake. Proposed projects occurring in these areas will be evaluated on a case by case basis by Louisiana Department of Wildlife & Fisheries. Modifications to proposed project features including, but not limited to, access routes, well sites, flowlines, and appurtenant structures maybe required by the Louisiana Department of Wildlife and Fisheries. In addition, compensatory mitigation will be required to offset unavoidable habitat impacts.

Applicant: LESLIE M. COOPER

Bidder	Cash Payment	Price/Acre	Rental	Oil	Gas	Other

Legend

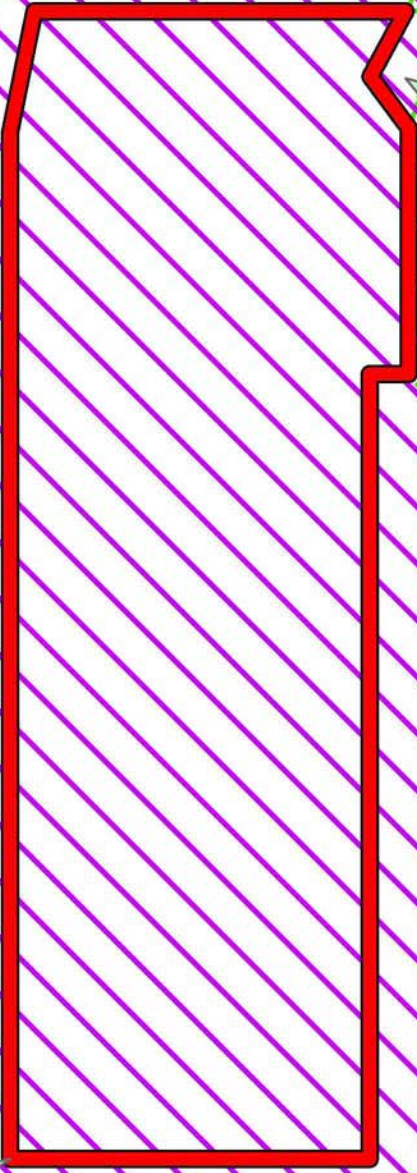
- 14090002
- Wildlife
- Active_Leases



ST MARY

ATCHAFALAYA DELTA WMA

P.O.B.



ATCHAFALAYA BAY

WL 21352

WL 21351

SL 20219

TRACT 44065 - St. Mary Parish, Louisiana

A portion of all lands located above the mean high water mark, together with lands now or formerly constituting the beds and bottoms of any water body of whatever description or nature belonging to the State of Louisiana which is now located within the boundaries of the Atchafalaya Delta Wildlife Management Area and not presently under mineral lease by the State of Louisiana on September 10, 2014, and more particularly located as follows: Beginning at a point within the Atchafalaya Delta Wildlife Management Area being a point having Coordinates of X = 1,969,667.52 and Y = 290,168.73; thence South 78 degrees 40 minutes 33 seconds East 7,235.34 feet to a point having Coordinates of X = 1,976,762.00 and Y = 288,748.00; thence South 2,992.00 feet to the Northeast corner of State Lease No. 20687 having Coordinates of X = 1,976,762.00 and Y = 285,756.00; thence along the boundaries of said State Lease No. 20687 the following courses: West 2,971.00 feet to a point having Coordinates of X = 1,973,791.00 and Y = 285,756.00 and South 4,003.00 feet to its Southwest corner and a point on the North boundary of State Lease No. 20688 having Coordinates of X = 1,973,791.00 and Y = 281,753.00; thence along the boundaries of said State Lease No. 20688 the following courses: West 1,540.00 feet to a point having Coordinates of X = 1,972,251.00 and Y = 281,753.00, South 2,452.00 feet to a point having Coordinates of X = 1,972,251.00 and Y = 279,301.00 and East 4,511.00 feet to a point having Coordinates of X = 1,976,762.00 and Y = 279,301.00; thence South 2,101.00 feet to a point having Coordinates of X = 1,976,762.00 and Y = 277,200.00; thence West 9,761.30 feet to the Southeast corner of State Lease No. 21352 having Coordinates of X = 1,967,000.70 and Y = 277,200.00; thence along the east boundary of said State Lease No. 21352 the following courses: North 42 degrees 42 minutes 45 seconds East 2,784.90 feet to a point having Coordinates of X = 1,968,889.75 and Y = 279,246.26, North 49 degrees 23 minutes 37 seconds East 4,116.26 feet to a point having Coordinates of X = 1,972,014.80 and Y = 281,925.36, North 24 degrees 39 minutes 00 seconds West 1,703.98 feet to a point having Coordinates of X = 1,971,304.12 and Y = 283,474.06 and North 61 degrees 24 minutes 53 seconds West 1,863.78 feet to its Northwest corner and the Northeast corner of State Lease No. 21351 having Coordinates of X = 1,969,667.52 and Y = 284,365.82; thence North 5,802.92 feet to the point of beginning, containing approximately **1,414.60 acres**, all as more particularly outlined on a plat on file in the Office of Mineral Resources, Department of Natural Resources. All bearings, distances and coordinates are based on Louisiana Coordinate System of 1927, (South Zone).

NOTE: The above description of the Tract nominated for lease has been provided and corrected, where required, exclusively by the nomination party. Any mineral lease selected from this Tract and awarded by the Louisiana State Mineral and Energy Board shall be without warranty of any kind, either express, implied, or statutory, including, but not limited to, the implied warranties of merchantability and fitness for a particular purpose. Should the mineral lease awarded by the Louisiana State Mineral and Energy Board be subsequently modified, cancelled or abrogated due to

the existence of conflicting leases, operating agreements, private claims or other future obligations or conditions which may affect all or any portion of the leased Tract, it shall not relieve the Lessee of the obligation to pay any bonus due thereon to the Louisiana State Mineral and Energy Board, nor shall the Louisiana State Mineral and Energy Board be obligated to refund any consideration paid by the Lessor prior to such modification, cancellation, or abrogation, including, but not limited to, bonuses, rentals and royalties.

NOTE: The mineral lease is located in the Atchafalaya Delta WMA under the jurisdiction of the Louisiana Department of Wildlife and Fisheries which has promulgated rules and regulations for the protection of game and wildlife on the aforesaid Tract and, therefore, shall be subject to said rules and regulations, a copy of which shall be attached to the mineral leases. In addition to the specific rules and regulations applicable, the following shall apply regarding operations under this mineral lease:

- No activities will be allowed without written authorization of the Louisiana Department of Wildlife and Fisheries.
- Proposed projects will be evaluated on a case by case basis. Modifications to proposed project features including but not limited to access routes, spoil placement, well sites, flowlines and appurtenant structures may be required by the Department of Wildlife and Fisheries.
- Compliance with the Atchafalaya Delta WMA regulations will be required unless otherwise specified by the Department of Wildlife and Fisheries.
- Compensatory mitigation will be required to offset unavoidable wetland impacts.
- Compensation and/or oyster seed ground surveys may be required by the Department for potential impacts to productive oyster seed grounds located within the management area.
- Removal of all structures, facilities and equipment will be required within 120 days of abandonment unless otherwise agreed to in writing by the Louisiana Department of Wildlife and Fisheries.
- No activities will be allowed during the hunting season unless approved by the Department.
- This tract is located within the emerging Atchafalaya Delta. No activities will be allowed on emergent islands, sub aerial mudflats or vegetated wetlands. Drilling will be restricted to passes and open water bays. The Louisiana Department of Wildlife and Fisheries (LDWF) shall have discretion to determine access routes. In the event that LDWF approves of dredging for access, LDWF shall have discretion to require hydraulic or spray dredging to reduce environmental impacts.
- Prior to submitting application for wetland permits to Federal and State permitting agencies the leaseholder shall coordinate project

details with the Department of Wildlife and Fisheries. Contact person for the Department will be Mike Windham at (504)284-5268.

Additionally, the Department will require a minimum bonus of \$350.00 per acre and a minimum royalty of 25%.

NOTE: The above described tract may be in the vicinity of existing shell reefs where drilling and dredging operations must be conducted in strict conformity with the regulations adopted by the Louisiana Department of Wildlife and Fisheries and/or the U.S. Corps of Engineers, U.S. Army.

NOTE: The State of Louisiana does hereby reserve, and this lease shall be subject to, the imprescriptible right of surface use in the nature of a servitude in favor of the Department of Natural Resources, including its Offices and Commissions, for the sole purpose of implementing, constructing, servicing and maintaining approved coastal zone management and/or restoration projects. Utilization of any and all rights derived under this lease by the mineral lessee, its agents, successors or assigns, shall not interfere with nor hinder the reasonable surface use by the Department of Natural Resources, its Offices or Commissions, as herein above reserved.

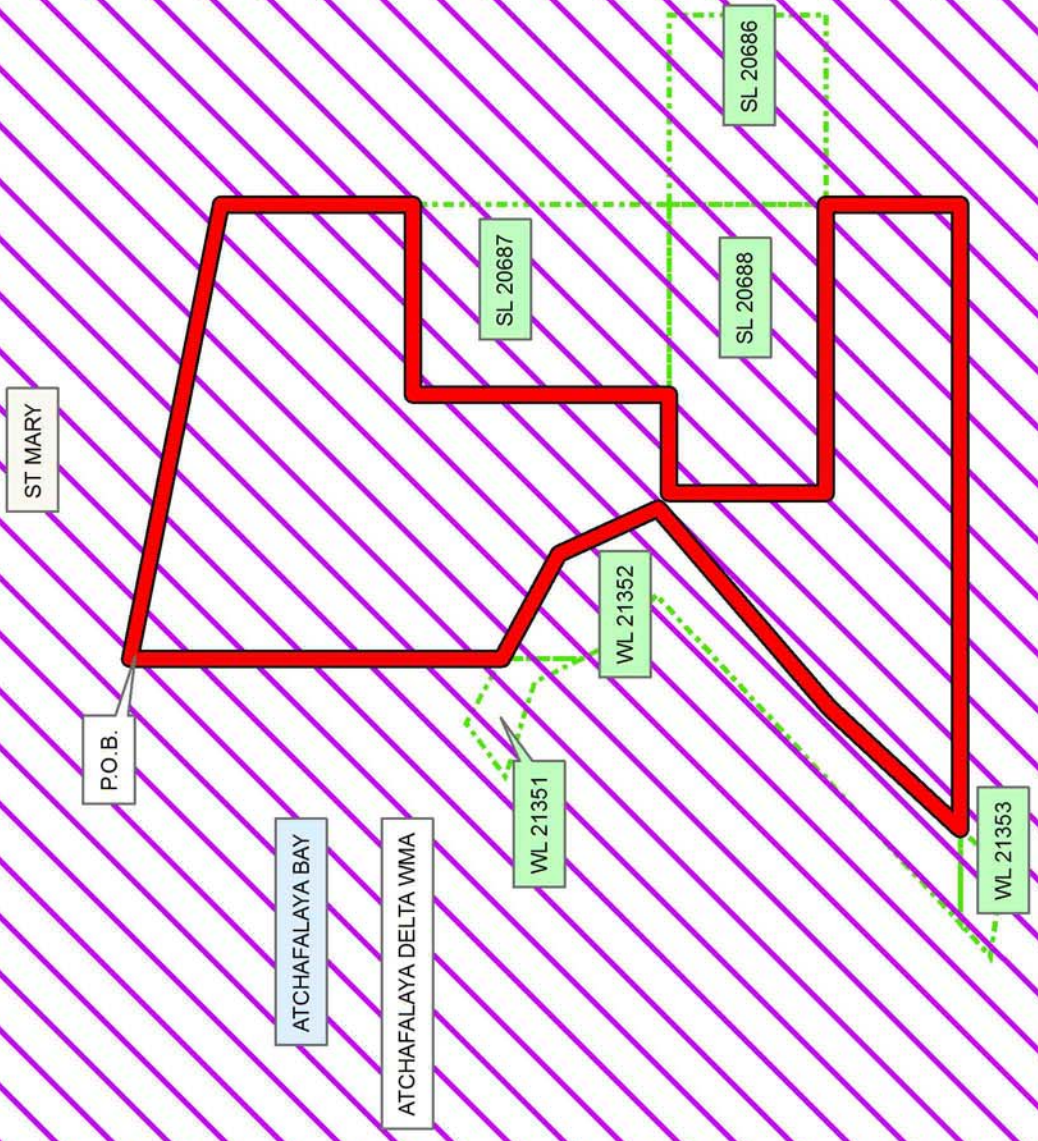
NOTE: This tract is located in an area designated by the Louisiana Legislature or the Wildlife and Fisheries Commission as a Public Oyster Seed Ground, Reservation, or area of Calcasieu or Sabine Lake. Proposed projects occurring in these areas will be evaluated on a case by case basis by Louisiana Department of Wildlife & Fisheries. Modifications to proposed project features including, but not limited to, access routes, well sites, flowlines, and appurtenant structures maybe required by the Louisiana Department of Wildlife and Fisheries. In addition, compensatory mitigation will be required to offset unavoidable habitat impacts.

Applicant: LESLIE M. COOPER

Bidder	Cash Payment	Price/Acre	Rental	Oil	Gas	Other

Legend

- 14090003
- Wildlife
- Active_Leases



TRACT 44066 - St. Mary Parish, Louisiana

A portion of all lands located above the mean high water mark, together with lands now or formerly constituting the beds and bottoms of any water body of whatever description or nature belonging to the State of Louisiana which is now located within the boundaries of the Atchafalaya Delta Wildlife Management Area and not presently under mineral lease by the State of Louisiana on September 10, 2014, and more particularly located as follows: **Beginning at a point within the Atchafalaya Delta Wildlife Management Area having Coordinates of X = 1,946,762.00 and Y = 285,129.85; thence South 3,566.83 feet to a point having Coordinates of X = 1,946,762.00 and Y = 281,563.02; thence West 3,902.00 feet to a point having Coordinates of X = 1,942,860.00 and Y = 281,563.02; thence South 5,363.02 feet to a point having Coordinates of X = 1,942,860.00 and Y = 276,200.00; thence West 2,230.00 feet to a point having Coordinates of X = 1,940,630.00 and Y = 276,200.00; thence South 4,320.00 feet to a point having Coordinates of X = 1,940,630.00 and Y = 271,880.00; thence West 3,368.15 feet to a point on the East boundary of State Lease No. 340, as amended, having Coordinates of X = 1,937,261.85 and Y = 271,880.00; thence along the boundaries of said State Lease No. 340 the following courses: North 00 degrees 08 minutes 00 seconds East 5,664.02 feet to a point having Coordinates of X = 1,937,275.03 and Y = 277,544.00, West 4,027.03 feet to a point having Coordinates of X = 1,933,248.00 and Y = 277,544.00 and North 7,585.85 feet to a point having Coordinates of X = 1,933,248.00 and Y = 285,129.85; thence East 13,514.00 feet to the point of beginning, containing approximately 2,499.31 acres,** all as more particularly outlined on a plat on file in the Office of Mineral Resources, Department of Natural Resources. All bearings, distances and coordinates are based on Louisiana Coordinate System of 1927, (South Zone).

NOTE: The above description of the Tract nominated for lease has been provided and corrected, where required, exclusively by the nomination party. Any mineral lease selected from this Tract and awarded by the Louisiana State Mineral and Energy Board shall be without warranty of any kind, either express, implied, or statutory, including, but not limited to, the implied warranties of merchantability and fitness for a particular purpose. Should the mineral lease awarded by the Louisiana State Mineral and Energy Board be subsequently modified, cancelled or abrogated due to the existence of conflicting leases, operating agreements, private claims or other future obligations or conditions which may affect all or any portion of the leased Tract, it shall not relieve the Lessee of the obligation to pay any bonus due thereon to the Louisiana State Mineral and Energy Board, nor shall the Louisiana State Mineral and Energy Board be obligated to refund any consideration paid by the Lessor prior to such modification, cancellation, or abrogation, including, but not limited to, bonuses, rentals and royalties.

NOTE: The mineral lease is located in the Atchafalaya Delta WMA under the jurisdiction of the Louisiana Department of Wildlife and Fisheries which has promulgated rules and regulations for the protection of game and

wildlife on the aforesaid Tract and, therefore, shall be subject to said rules and regulations, a copy of which shall be attached to the mineral leases. In addition to the specific rules and regulations applicable, the following shall apply regarding operations under this mineral lease:

- No activities will be allowed without written authorization of the Louisiana Department of Wildlife and Fisheries.
- Proposed projects will be evaluated on a case by case basis. Modifications to proposed project features including but not limited to access routes, spoil placement, well sites, flowlines and appurtenant structures may be required by the Department of Wildlife and Fisheries.
- Compliance with the Atchafalaya Delta WMA regulations will be required unless otherwise specified by the Department of Wildlife and Fisheries.
- Compensatory mitigation will be required to offset unavoidable wetland impacts.
- Compensation and/or oyster seed ground surveys may be required by the Department for potential impacts to productive oyster seed grounds located within the management area.
- Removal of all structures, facilities and equipment will be required within 120 days of abandonment unless otherwise agreed to in writing by the Louisiana Department of Wildlife and Fisheries.
- No activities will be allowed during the hunting season unless approved by the Department.
- This tract is located within the emerging Atchafalaya Delta. No activities will be allowed on emergent islands, sub aerial mudflats or vegetated wetlands. Drilling will be restricted to passes and open water bays. The Louisiana Department of Wildlife and Fisheries (LDWF) shall have discretion to determine access routes. In the event that LDWF approves of dredging for access, LDWF shall have discretion to require hydraulic or spray dredging to reduce environmental impacts.
- Prior to submitting application for wetland permits to Federal and State permitting agencies the leaseholder shall coordinate project details with the Department of Wildlife and Fisheries. Contact person for the Department will be Mike Windham at (504)284-5268.

Additionally, the Department will require a minimum bonus of \$350.00 per acre and a minimum royalty of 25%.

NOTE: The above described tract may be in the vicinity of existing shell reefs where drilling and dredging operations must be conducted in strict conformity with the regulations adopted by the Louisiana Department of Wildlife and Fisheries and/or the U.S. Corps of Engineers, U.S. Army.

NOTE: The State of Louisiana does hereby reserve, and this lease shall be subject to, the imprescriptible right of surface use in the nature of a servitude in favor of the Department of Natural Resources, including its Offices and Commissions, for the sole purpose of implementing, constructing, servicing and maintaining approved coastal zone management and/or restoration projects. Utilization of any and all rights derived under this lease by the mineral lessee, its agents, successors or assigns, shall not interfere with nor hinder the reasonable surface use by the Department of Natural Resources, its Offices or Commissions, as herein above reserved.

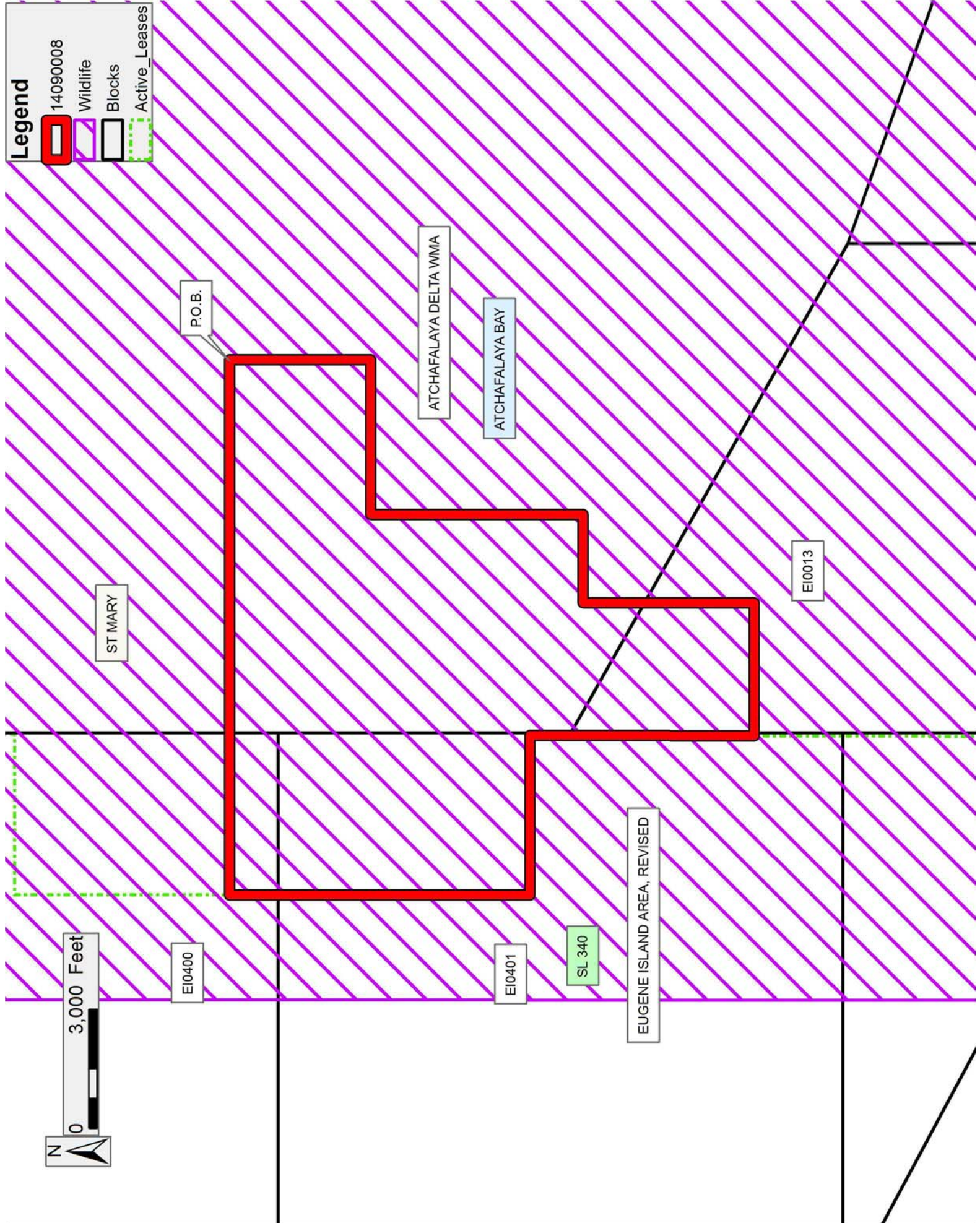
NOTE: This tract is located in an area designated by the Louisiana Legislature or the Wildlife and Fisheries Commission as a Public Oyster Seed Ground, Reservation, or area of Calcasieu or Sabine Lake. Proposed projects occurring in these areas will be evaluated on a case by case basis by Louisiana Department of Wildlife & Fisheries. Modifications to proposed project features including, but not limited to, access routes, well sites, flowlines, and appurtenant structures maybe required by the Louisiana Department of Wildlife and Fisheries. In addition, compensatory mitigation will be required to offset unavoidable habitat impacts.

Applicant: LESLIE M. COOPER

Bidder	Cash Payment	Price/Acre	Rental	Oil	Gas	Other

Legend

- 14090008
- Wildlife
- Blocks
- Active_Leases



TRACT 44067 - St. Mary Parish, Louisiana

A portion of all lands located above the mean high water mark, together with lands now or formerly constituting the beds and bottoms of any water body of whatever description or nature belonging to the State of Louisiana which is now located within the boundaries of the Atchafalaya Delta Wildlife Management Area and not presently under mineral lease by the State of Louisiana on September 10, 2014, and more particularly located as follows: Beginning at a point within the Atchafalaya Delta Wildlife Management Area having Coordinates of X = 1,946,762.00 and Y = 285,129.85; thence East 4,966.00 feet to a point having Coordinates of X = 1,951,728.00 and Y = 285,129.85; thence South 200.00 feet to a point having Coordinates of X = 1,951,728.00 and Y = 284,929.85; thence East 12,272.00 feet to a point having Coordinates of X = 1,964,000.00 and Y = 284,929.85; thence South 609.85 feet to the Northernmost Northwest corner of State Lease No. 20219 having Coordinates of X = 1,964,000.00 and Y = 284,320.00; thence South 52 degrees 56 minutes 24 seconds West 5,389.57 feet along the boundary of said State Lease No. 20219 to a point being the Northeast corner of State Lease No. 20220 having Coordinates of X = 1,959,699.10 and Y = 281,071.96; thence along the boundary of said State Lease No. 20220 the following courses: South 52 degrees 56 minutes 24 seconds West 2,442.47 feet to a point having Coordinates of X = 1,957,750.00 and Y = 279,600.00, and South 08 degrees 23 minutes 13 seconds West 384.67 feet to a point being the Northeast corner of State Lease No. 20222 having Coordinates of X = 1,957,693.89 and Y = 279,219.44; thence South 08 degrees 23 minutes 13 seconds West 600.00 feet along the boundary of said State Lease No. 20222 to a point being the Northeast corner of State Lease No. 20367 having Coordinates of X = 1,957,606.38 and Y = 278,625.86; thence South 59 degrees 51 minutes 40 seconds West 6,391.66 feet along the boundary of said State Lease No. 20367 to a point having Coordinates of X = 1,952,078.80 and Y = 275,416.63; thence North 1,241.18 feet to a point having Coordinates of X = 1,952,078.80 and Y = 276,657.81; thence West 5,316.80 feet to a point having Coordinates of X = 1,946,762.00 and Y = 276,657.81; thence North 8,472.04 feet to the point of beginning, containing approximately **2,481.32 acres**, all as more particularly outlined on a plat on file in the Office of Mineral Resources, Department of Natural Resources. All bearings, distances and coordinates are based on Louisiana Coordinate System of 1927, (South Zone).

NOTE: The above description of the Tract nominated for lease has been provided and corrected, where required, exclusively by the nomination party. Any mineral lease selected from this Tract and awarded by the Louisiana State Mineral and Energy Board shall be without warranty of any kind, either express, implied, or statutory, including, but not limited to, the implied warranties of merchantability and fitness for a particular purpose. Should the mineral lease awarded by the Louisiana State Mineral and Energy Board be subsequently modified, cancelled or abrogated due to the existence of conflicting leases, operating agreements, private claims or other future obligations or conditions which may affect all or any

portion of the leased Tract, it shall not relieve the Lessee of the obligation to pay any bonus due thereon to the Louisiana State Mineral and Energy Board, nor shall the Louisiana State Mineral and Energy Board be obligated to refund any consideration paid by the Lessor prior to such modification, cancellation, or abrogation, including, but not limited to, bonuses, rentals and royalties.

NOTE: The mineral lease is located in the Atchafalaya Delta WMA under the jurisdiction of the Louisiana Department of Wildlife and Fisheries which has promulgated rules and regulations for the protection of game and wildlife on the aforesaid Tract and, therefore, shall be subject to said rules and regulations, a copy of which shall be attached to the mineral leases. In addition to the specific rules and regulations applicable, the following shall apply regarding operations under this mineral lease:

- No activities will be allowed without written authorization of the Louisiana Department of Wildlife and Fisheries.
- Proposed projects will be evaluated on a case by case basis. Modifications to proposed project features including but not limited to access routes, spoil placement, well sites, flowlines and appurtenant structures may be required by the Department of Wildlife and Fisheries.
- Compliance with the Atchafalaya Delta WMA regulations will be required unless otherwise specified by the Department of Wildlife and Fisheries.
- Compensatory mitigation will be required to offset unavoidable wetland impacts.
- Compensation and/or oyster seed ground surveys may be required by the Department for potential impacts to productive oyster seed grounds located within the management area.
- Removal of all structures, facilities and equipment will be required within 120 days of abandonment unless otherwise agreed to in writing by the Louisiana Department of Wildlife and Fisheries.
- No activities will be allowed during the hunting season unless approved by the Department.
- This tract is located within the emerging Atchafalaya Delta. No activities will be allowed on emergent islands, sub aerial mudflats or vegetated wetlands. Drilling will be restricted to passes and open water bays. The Louisiana Department of Wildlife and Fisheries (LDWF) shall have discretion to determine access routes. In the event that LDWF approves of dredging for access, LDWF shall have discretion to require hydraulic or spray dredging to reduce environmental impacts.
- Prior to submitting application for wetland permits to Federal and State permitting agencies the leaseholder shall coordinate project details with the Department of Wildlife and Fisheries. Contact person for the Department will be Mike Windham at (504)284-5268.

Additionally, the Department will require a minimum bonus of \$350.00 per acre and a minimum royalty of 25%.

NOTE: The above described tract may be in the vicinity of existing shell reefs where drilling and dredging operations must be conducted in strict conformity with the regulations adopted by the Louisiana Department of Wildlife and Fisheries and/or the U.S. Corps of Engineers, U.S. Army.

NOTE: The State of Louisiana does hereby reserve, and this lease shall be subject to, the imprescriptible right of surface use in the nature of a servitude in favor of the Department of Natural Resources, including its Offices and Commissions, for the sole purpose of implementing, constructing, servicing and maintaining approved coastal zone management and/or restoration projects. Utilization of any and all rights derived under this lease by the mineral lessee, its agents, successors or assigns, shall not interfere with nor hinder the reasonable surface use by the Department of Natural Resources, its Offices or Commissions, as herein above reserved.

NOTE: This tract is located in an area designated by the Louisiana Legislature or the Wildlife and Fisheries Commission as a Public Oyster Seed Ground, Reservation, or area of Calcasieu or Sabine Lake. Proposed projects occurring in these areas will be evaluated on a case by case basis by Louisiana Department of Wildlife & Fisheries. Modifications to proposed project features including, but not limited to, access routes, well sites, flowlines, and appurtenant structures maybe required by the Louisiana Department of Wildlife and Fisheries. In addition, compensatory mitigation will be required to offset unavoidable habitat impacts.

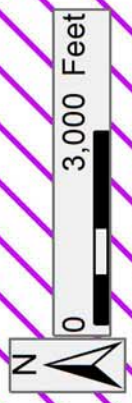
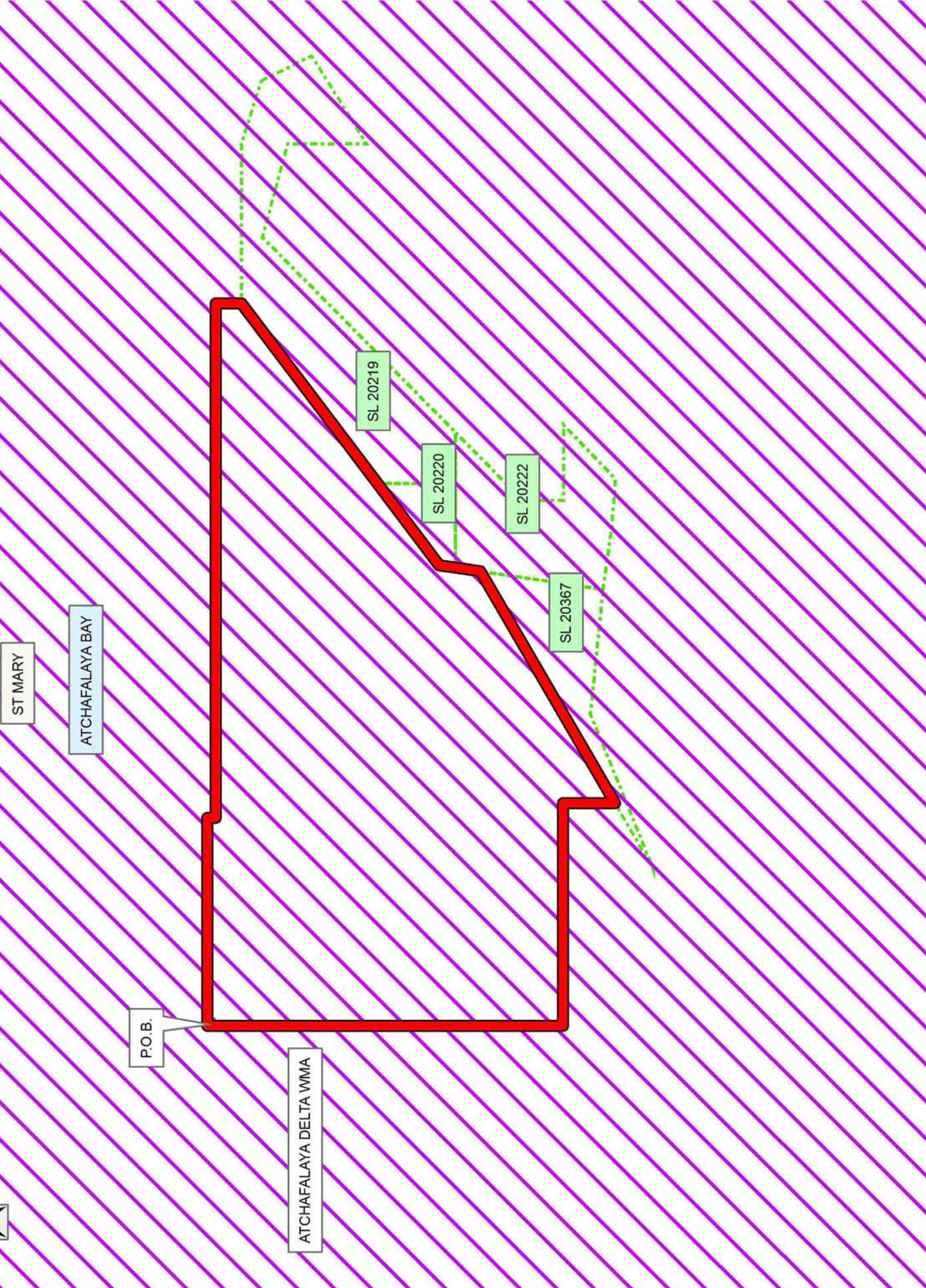
Applicant: LESLIE M. COOPER

Bidder	Cash Payment	Price/Acre	Rental	Oil	Gas	Other

14090007

Wildlife

Active_Leases



TRACT 44068 - St. Mary Parish, Louisiana

A portion of all lands located above the mean high water mark, together with lands now or formerly constituting the beds and bottoms of any water body of whatever description or nature belonging to the State of Louisiana which is now located within the boundaries of the Atchafalaya Delta Wildlife Management Area and not presently under mineral lease by the State of Louisiana on September 10, 2014, and more particularly located as follows: Beginning at a point within the Atchafalaya Delta Wildlife Management Area having Coordinates of X = 1,942,860.00 and Y = 281,563.02; thence East 3,902.00 feet to the Northwest corner of State Lease No. 20525 having Coordinates of X = 1,946,762.00 and Y = 281,563.02; thence along the boundary of said State Lease No. 20525 the following courses: South 4,905.21 feet and East 5,316.80 feet to its Southeast corner having Coordinates of X = 1,952,078.80 and Y = 276,657.81; thence South 1,241.18 feet to a point on the boundary of State Lease No. 20367 having Coordinates of X = 1,952,078.80 and Y = 275,416.63; thence South 59 degrees 51 minutes 40 seconds West 1,825.60 feet along the boundary of said State Lease No. 20367 to its Westernmost corner, also being the Northeast corner of State Lease No. 20368 having Coordinates of X = 1,950,500.00 and Y = 274,500.00; thence South 59 degrees 51 minutes 40 seconds West 666.51 feet along the boundary of said State Lease No. 20368 to the Northernmost Northeast corner of State Lease No. 20529 having Coordinates of X = 1,949,923.60 and Y = 274,165.35; thence along the boundary of said State Lease No. 20529 the following courses: North 74 degrees 30 minutes 55 seconds West 1,337.34 feet; South 75 degrees 05 minutes 25 seconds West 890.66 feet and South 34 degrees 38 minutes 15 seconds West 1,780.71 feet to its Westernmost Northwest corner, also being the Northernmost corner of State Lease No. 20530 having Coordinates of X = 1,946,762.00 and Y = 272,828.12; thence along the boundary of said State Lease No. 20530 the following courses: South 34 degrees 38 minutes 15 seconds West 2,584.02 feet and South 17 degrees 23 minutes 50 seconds West 2,359.48 feet to the Northeast corner of State Lease No. 21053 having Coordinates of X = 1,944,587.82 and Y = 268,450.53; thence along the boundary of said State Lease No. 21053 the following courses: South 72 degrees 17 minutes 54 seconds West 3,127.95 feet to a point having Coordinates of X = 1,941,607.97 and Y = 267,499.45 and South 89 degrees 39 minutes 48 seconds West 4,356.45 feet to its Northwest corner, also being a point on the East boundary of State Lease No. 340, as amended, having Coordinates of X = 1,937,251.59 and Y = 267,473.86; thence North 00 degrees 08 minutes 00 seconds East 4,406.16 feet along the boundary of said State Lease No. 340 to a point having Coordinates of X = 1,937,261.85 and Y = 271,880.00; thence East 3,368.15 feet to a point having Coordinates of X = 1,940,630.00 and Y = 271,880.00; thence North 4,320.00 feet to a point having Coordinates of X = 1,940,630.00 and Y = 276,200.00; thence East 2,230.00 feet to a point having Coordinates of X = 1,942,860.00 and Y = 276,200.00; thence North 5,363.02 feet to the point of beginning, containing approximately **2,112.95 acres**, all as

more particularly outlined on a plat on file in the Office of Mineral Resources, Department of Natural Resources. All bearings, distances and coordinates are based on Louisiana Coordinate System of 1927, (South Zone).

NOTE: The above description of the Tract nominated for lease has been provided and corrected, where required, exclusively by the nomination party. Any mineral lease selected from this Tract and awarded by the Louisiana State Mineral and Energy Board shall be without warranty of any kind, either express, implied, or statutory, including, but not limited to, the implied warranties of merchantability and fitness for a particular purpose. Should the mineral lease awarded by the Louisiana State Mineral and Energy Board be subsequently modified, cancelled or abrogated due to the existence of conflicting leases, operating agreements, private claims or other future obligations or conditions which may affect all or any portion of the leased Tract, it shall not relieve the Lessee of the obligation to pay any bonus due thereon to the Louisiana State Mineral and Energy Board, nor shall the Louisiana State Mineral and Energy Board be obligated to refund any consideration paid by the Lessor prior to such modification, cancellation, or abrogation, including, but not limited to, bonuses, rentals and royalties.

NOTE: The mineral lease is located in the Atchafalaya Delta WMA under the jurisdiction of the Louisiana Department of Wildlife and Fisheries which has promulgated rules and regulations for the protection of game and wildlife on the aforesaid Tract and, therefore, shall be subject to said rules and regulations, a copy of which shall be attached to the mineral leases. In addition to the specific rules and regulations applicable, the following shall apply regarding operations under this mineral lease:

- No activities will be allowed without written authorization of the Louisiana Department of Wildlife and Fisheries.
- Proposed projects will be evaluated on a case by case basis. Modifications to proposed project features including but not limited to access routes, spoil placement, well sites, flowlines and appurtenant structures may be required by the Department of Wildlife and Fisheries.
- Compliance with the Atchafalaya Delta WMA regulations will be required unless otherwise specified by the Department of Wildlife and Fisheries.
- Compensatory mitigation will be required to offset unavoidable wetland impacts.
- Compensation and/or oyster seed ground surveys may be required by the Department for potential impacts to productive oyster seed grounds located within the management area.
- Removal of all structures, facilities and equipment will be required within 120 days of abandonment unless otherwise agreed to in writing by the Louisiana Department of Wildlife and Fisheries.

- No activities will be allowed during the hunting season unless approved by the Department.
- This tract is located within the emerging Atchafalaya Delta. No activities will be allowed on emergent islands, sub aerial mudflats or vegetated wetlands. Drilling will be restricted to passes and open water bays. The Louisiana Department of Wildlife and Fisheries (LDWF) shall have discretion to determine access routes. In the event that LDWF approves of dredging for access, LDWF shall have discretion to require hydraulic or spray dredging to reduce environmental impacts.
- Prior to submitting application for wetland permits to Federal and State permitting agencies the leaseholder shall coordinate project details with the Department of Wildlife and Fisheries. Contact person for the Department will be Mike Windham at (504)284-5268.

Additionally, the Department will require a minimum bonus of \$350.00 per acre and a minimum royalty of 25%.

NOTE: The above described tract may be in the vicinity of existing shell reefs where drilling and dredging operations must be conducted in strict conformity with the regulations adopted by the Louisiana Department of Wildlife and Fisheries and/or the U.S. Corps of Engineers, U.S. Army.

NOTE: The State of Louisiana does hereby reserve, and this lease shall be subject to, the imprescriptible right of surface use in the nature of a servitude in favor of the Department of Natural Resources, including its Offices and Commissions, for the sole purpose of implementing, constructing, servicing and maintaining approved coastal zone management and/or restoration projects. Utilization of any and all rights derived under this lease by the mineral lessee, its agents, successors or assigns, shall not interfere with nor hinder the reasonable surface use by the Department of Natural Resources, its Offices or Commissions, as herein above reserved.

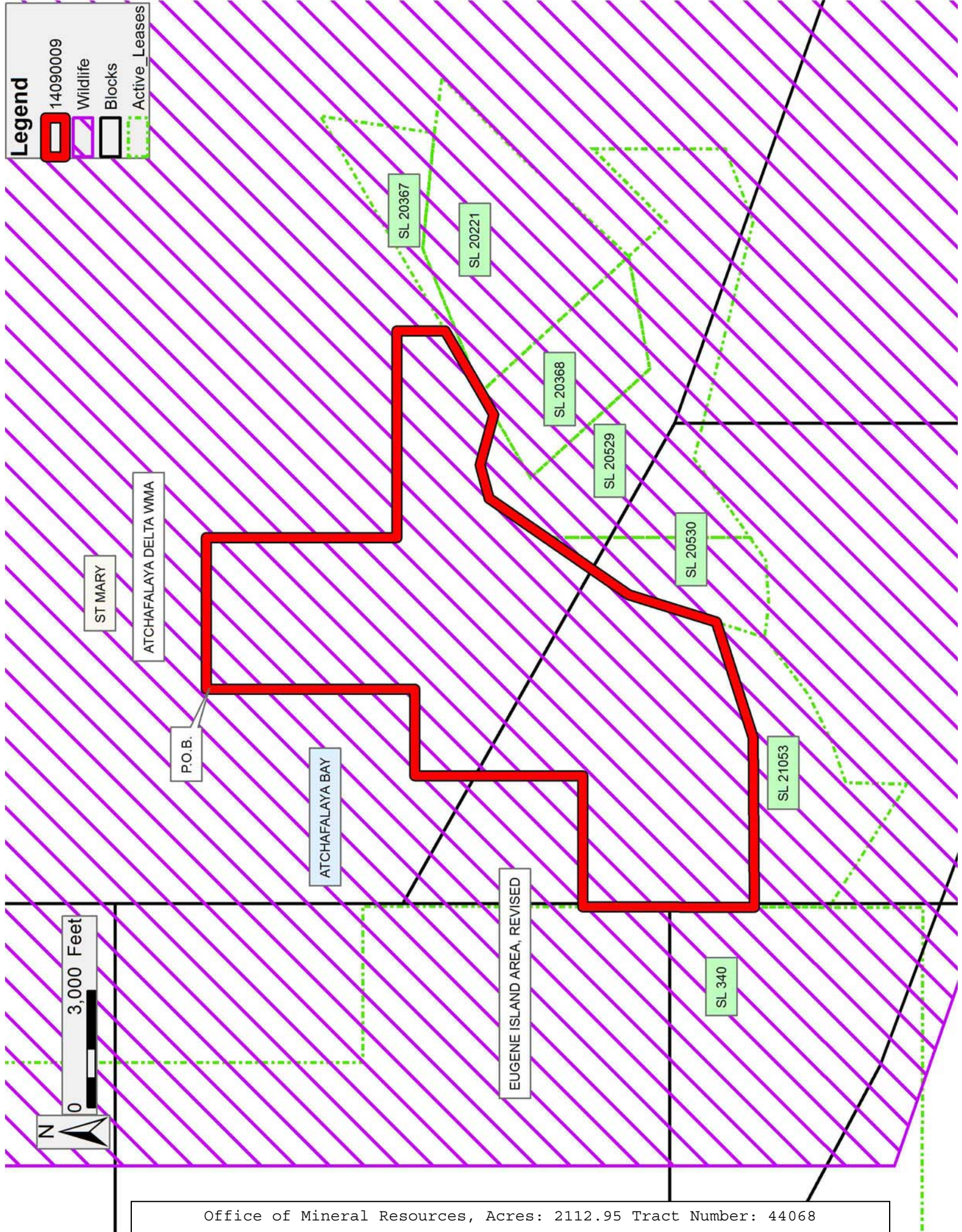
NOTE: This tract is located in an area designated by the Louisiana Legislature or the Wildlife and Fisheries Commission as a Public Oyster Seed Ground, Reservation, or area of Calcasieu or Sabine Lake. Proposed projects occurring in these areas will be evaluated on a case by case basis by Louisiana Department of Wildlife & Fisheries. Modifications to proposed project features including, but not limited to, access routes, well sites, flowlines, and appurtenant structures maybe required by the Louisiana Department of Wildlife and Fisheries. In addition, compensatory mitigation will be required to offset unavoidable habitat impacts.

Applicant: LESLIE M. COOPER

Bidder	Cash Payment	Price/Acre	Rental	Oil	Gas	Other

Legend

- 14090009
- Wildlife
- Blocks
- Active_Leases



TRACT 44069 - St. Mary Parish, Louisiana

A portion of all lands located above the mean high water mark, together with lands now or formerly constituting the beds and bottoms of any water body of whatever description or nature belonging to the State of Louisiana which is now located within the boundaries of the Atchafalaya Delta Wildlife Management Area and not presently under mineral lease by the State of Louisiana on September 10, 2014, and more particularly located as follows: Beginning at a point within the Atchafalaya Delta Wildlife Management Area, having Coordinates of X = 1,967,237.41 and Y = 277,200.00; thence East 11,562.59 feet to a point having Coordinates of X = 1,978,800.00 and Y = 277,200.00; thence South 2,002.00 feet to a point having Coordinates of X = 1,978,800.00 and Y = 275,198.00; thence East 254.00 feet to a point being the Northeast corner of State Lease No. 20691 having Coordinates of X = 1,979,054.00 and Y = 275,198.00; thence South 1,918.00 feet along the Western boundary of said State Lease No. 20691 to its Southwest corner having Coordinates of X = 1,979,054.00 and Y = 273,280.00, said point also being the Northwest corner of State Lease No. 20689; thence South 00 degrees 57 minutes 46 seconds West 1,666.23 feet along the Western boundary of said State Lease No. 20689 to a point having Coordinates of X = 1,979,026.00 and Y = 271,614.00; thence continue South 00 degrees 39 minutes 58 seconds East 860.06 feet along the Western boundary of said State Lease No. 20689 to a point being its Southwest corner having Coordinates of X = 1,979,036.00 and Y = 270,754.00, said point also being on the Northern boundary of State Lease No. 20690; thence along the boundary of said State Lease No. 20690 the following courses: West 2,274.00 feet to a point having Coordinates of X = 1,976,762.00 and Y = 270,754.00; thence South 2,105.00 feet to a point having Coordinates of X = 1,976,762.00 and Y = 268,649.00; thence West 9,524.59 feet to a point having Coordinates of X = 1,967,237.41 and Y = 268,649.00; thence North 8,551.00 feet to the point of beginning, containing approximately **2,196.22 acres**, all as more particularly outlined on a plat on file in the Office of Mineral Resources, Department of Natural Resources. All bearings, distances and coordinates are based on Louisiana Coordinate System of 1927, (South Zone).

NOTE: The above description of the Tract nominated for lease has been provided and corrected, where required, exclusively by the nomination party. Any mineral lease selected from this Tract and awarded by the Louisiana State Mineral and Energy Board shall be without warranty of any kind, either express, implied, or statutory, including, but not limited to, the implied warranties of merchantability and fitness for a particular purpose. Should the mineral lease awarded by the Louisiana State Mineral and Energy Board be subsequently modified, cancelled or abrogated due to the existence of conflicting leases, operating agreements, private claims or other future obligations or conditions which may affect all or any portion of the leased Tract, it shall not relieve the Lessee of the obligation to pay any bonus due thereon to the Louisiana State Mineral and Energy Board, nor shall the Louisiana State Mineral and Energy Board be obligated to refund any consideration paid by the Lessor prior to such

modification, cancellation, or abrogation, including, but not limited to, bonuses, rentals and royalties.

NOTE: The mineral lease is located in the Atchafalaya Delta WMA under the jurisdiction of the Louisiana Department of Wildlife and Fisheries which has promulgated rules and regulations for the protection of game and wildlife on the aforesaid Tract and, therefore, shall be subject to said rules and regulations, a copy of which shall be attached to the mineral leases. In addition to the specific rules and regulations applicable, the following shall apply regarding operations under this mineral lease:

- No activities will be allowed without written authorization of the Louisiana Department of Wildlife and Fisheries.
- Proposed projects will be evaluated on a case by case basis. Modifications to proposed project features including but not limited to access routes, spoil placement, well sites, flowlines and appurtenant structures may be required by the Department of Wildlife and Fisheries.
- Compliance with the Atchafalaya Delta WMA regulations will be required unless otherwise specified by the Department of Wildlife and Fisheries.
- Compensatory mitigation will be required to offset unavoidable wetland impacts.
- Compensation and/or oyster seed ground surveys may be required by the Department for potential impacts to productive oyster seed grounds located within the management area.
- Removal of all structures, facilities and equipment will be required within 120 days of abandonment unless otherwise agreed to in writing by the Louisiana Department of Wildlife and Fisheries.
- No activities will be allowed during the hunting season unless approved by the Department.
- This tract is located within the emerging Atchafalaya Delta. No activities will be allowed on emergent islands, sub aerial mudflats or vegetated wetlands. Drilling will be restricted to passes and open water bays. The Louisiana Department of Wildlife and Fisheries (LDWF) shall have discretion to determine access routes. In the event that LDWF approves of dredging for access, LDWF shall have discretion to require hydraulic or spray dredging to reduce environmental impacts.
- Prior to submitting application for wetland permits to Federal and State permitting agencies the leaseholder shall coordinate project details with the Department of Wildlife and Fisheries. Contact person for the Department will be Mike Windham at (504)284-5268.

Additionally, the Department will require a minimum bonus of \$350.00 per acre and a minimum royalty of 25%.

NOTE: The above described tract may be in the vicinity of existing shell reefs where drilling and dredging operations must be conducted in strict conformity with the regulations adopted by the Louisiana Department of Wildlife and Fisheries and/or the U.S. Corps of Engineers, U.S. Army.

NOTE: The State of Louisiana does hereby reserve, and this lease shall be subject to, the imprescriptible right of surface use in the nature of a servitude in favor of the Department of Natural Resources, including its Offices and Commissions, for the sole purpose of implementing, constructing, servicing and maintaining approved coastal zone management and/or restoration projects. Utilization of any and all rights derived under this lease by the mineral lessee, its agents, successors or assigns, shall not interfere with nor hinder the reasonable surface use by the Department of Natural Resources, its Offices or Commissions, as herein above reserved.

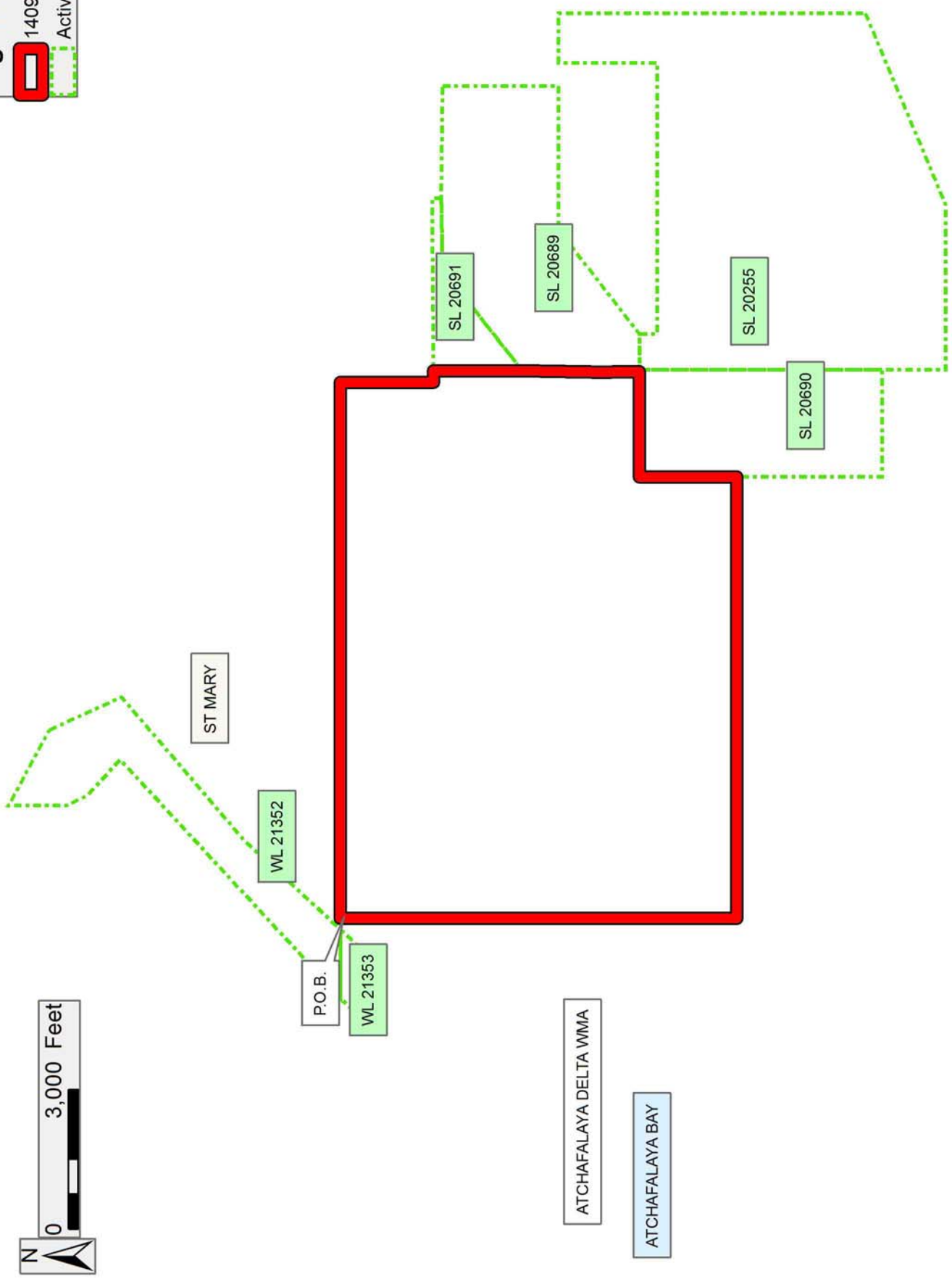
NOTE: This tract is located in an area designated by the Louisiana Legislature or the Wildlife and Fisheries Commission as a Public Oyster Seed Ground, Reservation, or area of Calcasieu or Sabine Lake. Proposed projects occurring in these areas will be evaluated on a case by case basis by Louisiana Department of Wildlife & Fisheries. Modifications to proposed project features including, but not limited to, access routes, well sites, flowlines, and appurtenant structures maybe required by the Louisiana Department of Wildlife and Fisheries. In addition, compensatory mitigation will be required to offset unavoidable habitat impacts.

Applicant: LESLIE M. COOPER

Bidder	Cash Payment	Price/Acre	Rental	Oil	Gas	Other

Legend

14090005
Active_Leases



TRACT 44070 - St. Mary Parish, Louisiana

A portion of all lands located above the mean high water mark, together with lands now or formerly constituting the beds and bottoms of any water body of whatever description or nature belonging to the State of Louisiana which is now located within the boundaries of the Atchafalaya Delta Wildlife Management Area and not presently under mineral lease by the State of Louisiana on September 10, 2014, and more particularly located as follows: Beginning at a point within the Atchafalaya Delta Wildlife Management Area, also located on the East boundary of State Lease No. 20527 and the Southwest corner of State Lease No. 21353 having Coordinates of X = 1,965,014.82 and Y = 276,727.34; thence along the boundaries of said State Lease No. 21353 the following courses: South 82 degrees 22 minutes 21 seconds East 1,391.35 feet to a point having Coordinates of X = 1,966,393.86 and Y = 276,542.66 and North 42 degrees 42 minutes 45 seconds East 894.62 feet to its Northeast corner having Coordinates of X = 1,967,000.70 and Y = 277,200.00; thence East 236.71 feet to a point having Coordinates of X = 1,967,237.41 and Y = 277,200.00; thence South 8,551.00 feet to a point having Coordinates of X = 1,967,237.41 and Y = 268,649.00; thence West 9,336.79 feet to a point located on the East boundary of State Lease No. 20528 having Coordinates of X = 1,957,900.62 and Y = 268,649.00; thence along the East boundary of said State Lease No. 20528 the following courses and distances: North 69 degrees 07 minutes 19 seconds East 178.18 feet to a corner having Coordinates of X = 1,958,067.09 and Y = 268,712.50, North 44 degrees 21 minutes 54 seconds East 6,728.06 feet to a corner having Coordinates of X = 1,962,771.52 and Y = 273,522.39 and North 12 degrees 10 minutes 53 seconds East 1,443.97 feet to its Northeast corner also being the Southeast corner of said State Lease No. 20527 having Coordinates of X = 1,963,076.21 and Y = 274,933.85; thence North 47 degrees 13 minutes 37 seconds East 2,640.99 feet along the East boundary of said State Lease No. 20527 to the point of beginning, containing approximately **1,039.18 acres**, all as more particularly outlined on a plat on file in the Office of Mineral Resources, Department of Natural Resources. All bearings, distances and coordinates are based on Louisiana Coordinate System of 1927, (South Zone).

NOTE: The above description of the Tract nominated for lease has been provided and corrected, where required, exclusively by the nomination party. Any mineral lease selected from this Tract and awarded by the Louisiana State Mineral and Energy Board shall be without warranty of any kind, either express, implied, or statutory, including, but not limited to, the implied warranties of merchantability and fitness for a particular purpose. Should the mineral lease awarded by the Louisiana State Mineral and Energy Board be subsequently modified, cancelled or abrogated due to the existence of conflicting leases, operating agreements, private claims or other future obligations or conditions which may affect all or any portion of the leased Tract, it shall not relieve the Lessee of the obligation to pay any bonus due thereon to the Louisiana State Mineral and Energy Board, nor shall the Louisiana State Mineral and Energy Board be obligated to refund any consideration paid by the Lessor prior to such

modification, cancellation, or abrogation, including, but not limited to, bonuses, rentals and royalties.

NOTE: The mineral lease is located in the Atchafalaya Delta WMA under the jurisdiction of the Louisiana Department of Wildlife and Fisheries which has promulgated rules and regulations for the protection of game and wildlife on the aforesaid Tract and, therefore, shall be subject to said rules and regulations, a copy of which shall be attached to the mineral leases. In addition to the specific rules and regulations applicable, the following shall apply regarding operations under this mineral lease:

- No activities will be allowed without written authorization of the Louisiana Department of Wildlife and Fisheries.
- Proposed projects will be evaluated on a case by case basis. Modifications to proposed project features including but not limited to access routes, spoil placement, well sites, flowlines and appurtenant structures may be required by the Department of Wildlife and Fisheries.
- Compliance with the Atchafalaya Delta WMA regulations will be required unless otherwise specified by the Department of Wildlife and Fisheries.
- Compensatory mitigation will be required to offset unavoidable wetland impacts.
- Compensation and/or oyster seed ground surveys may be required by the Department for potential impacts to productive oyster seed grounds located within the management area.
- Removal of all structures, facilities and equipment will be required within 120 days of abandonment unless otherwise agreed to in writing by the Louisiana Department of Wildlife and Fisheries.
- No activities will be allowed during the hunting season unless approved by the Department.
- This tract is located within the emerging Atchafalaya Delta. No activities will be allowed on emergent islands, sub aerial mudflats or vegetated wetlands. Drilling will be restricted to passes and open water bays. The Louisiana Department of Wildlife and Fisheries (LDWF) shall have discretion to determine access routes. In the event that LDWF approves of dredging for access, LDWF shall have discretion to require hydraulic or spray dredging to reduce environmental impacts.
- Prior to submitting application for wetland permits to Federal and State permitting agencies the leaseholder shall coordinate project details with the Department of Wildlife and Fisheries. Contact person for the Department will be Mike Windham at (504)284-5268.

Additionally, the Department will require a minimum bonus of \$350.00 per acre and a minimum royalty of 25%.

NOTE: The above described tract may be in the vicinity of existing shell reefs where drilling and dredging operations must be conducted in strict conformity with the regulations adopted by the Louisiana Department of Wildlife and Fisheries and/or the U.S. Corps of Engineers, U.S. Army.

NOTE: The State of Louisiana does hereby reserve, and this lease shall be subject to, the imprescriptible right of surface use in the nature of a servitude in favor of the Department of Natural Resources, including its Offices and Commissions, for the sole purpose of implementing, constructing, servicing and maintaining approved coastal zone management and/or restoration projects. Utilization of any and all rights derived under this lease by the mineral lessee, its agents, successors or assigns, shall not interfere with nor hinder the reasonable surface use by the Department of Natural Resources, its Offices or Commissions, as herein above reserved.

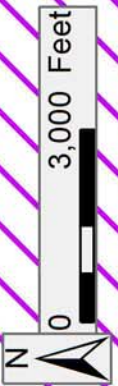
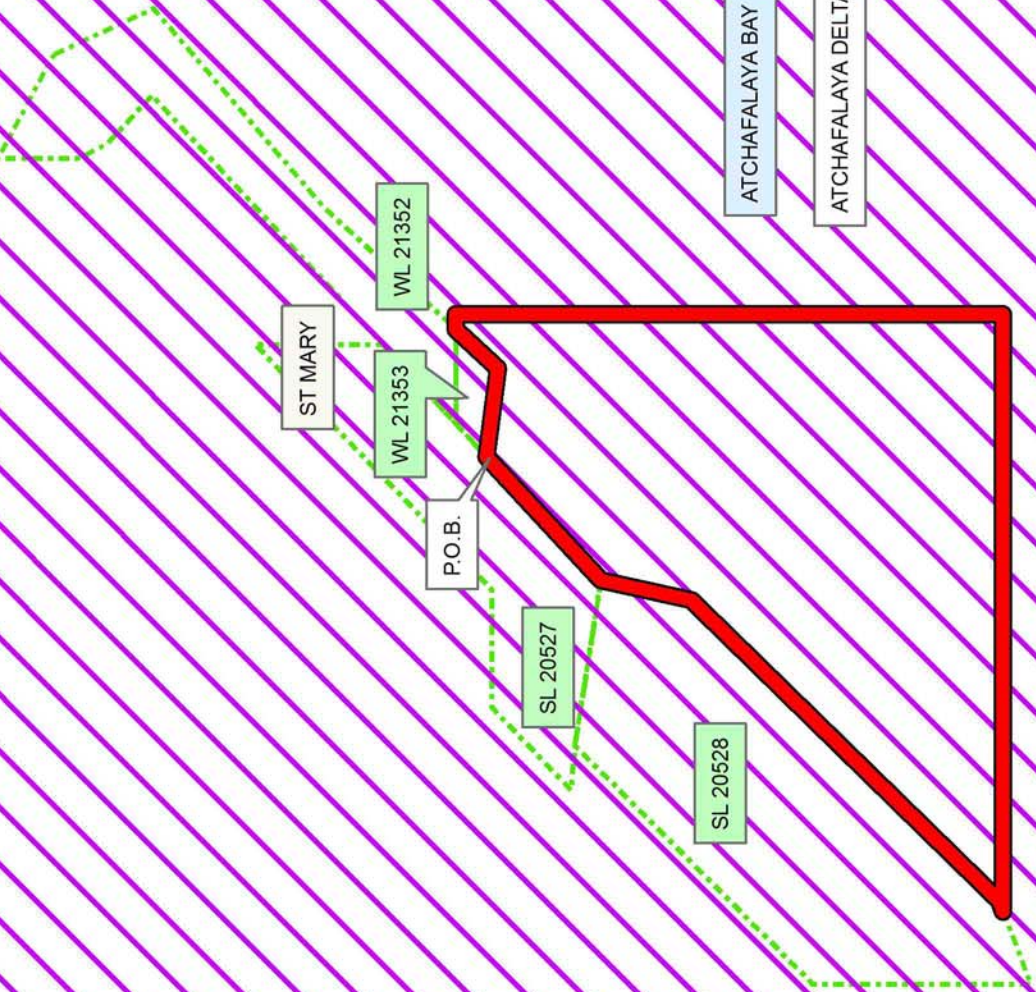
NOTE: This tract is located in an area designated by the Louisiana Legislature or the Wildlife and Fisheries Commission as a Public Oyster Seed Ground, Reservation, or area of Calcasieu or Sabine Lake. Proposed projects occurring in these areas will be evaluated on a case by case basis by Louisiana Department of Wildlife & Fisheries. Modifications to proposed project features including, but not limited to, access routes, well sites, flowlines, and appurtenant structures maybe required by the Louisiana Department of Wildlife and Fisheries. In addition, compensatory mitigation will be required to offset unavoidable habitat impacts.

Applicant: LESLIE M. COOPER

Bidder	Cash Payment	Price/Acre	Rental	Oil	Gas	Other

Legend

- 14090006
- Wildlife
- Active_Leases



TRACT 44071 - St. Mary Parish, Louisiana

A portion of all lands located above the mean high water mark, together with lands now or formerly constituting the beds and bottoms of any water body of whatever description or nature belonging to the State of Louisiana which is now located within the boundaries of the Atchafalaya Delta Wildlife Management Area and not presently under mineral lease by the State of Louisiana on September 10, 2014, and more particularly located as follows: Beginning at a point within the Atchafalaya Delta Wildlife Management Area, also located on the south boundary of State Lease No. 20528 having Coordinates of X = 1,957,900.62 and Y = 268,649.00; thence East 8,284.79 feet to a point having Coordinates of X = 1,966,185.41 and Y = 268,649.00; thence South 11,737.00 feet to a point having Coordinates of X = 1,966,185.41 and Y = 256,912.00; thence South 65 degrees 24 minutes 31 seconds West 2,005.21 feet to a point having Coordinates of X = 1,964,362.07 and Y = 256,077.54; thence North 4,427.07 feet to a point having Coordinates of X = 1,964,362.07 and Y = 260,504.61; thence West 13,405.35 feet to the Northeast corner of State Lease No. 20224 and the Southeast corner of State Lease No. 20223 having Coordinates of X = 1,950,956.72 and Y = 260,504.61; thence North 36 degrees 15 minutes 14 seconds East 3,962.51 feet along the east boundary of said State Lease No. 20223 to its Northeast corner and the Southeast corner of State Lease No. 21120 having Coordinates of X = 1,953,300.00 and Y = 263,700.00; thence along the boundaries of said State Lease No. 21120 the following courses: North 56 degrees 43 minutes 13 seconds East 619.62 feet to a point having Coordinates of X = 1,953,818.00 and Y = 264,040.00, North 49 degrees 52 minutes 07 seconds East 823.99 feet to a point having Coordinates of X = 1,954,448.00 and Y = 264,571.10, North 28 degrees 04 minutes 57 seconds East 1,070.65 feet to a point having Coordinates of X = 1,954,952.00 and Y = 265,515.70 and North 12 degrees 19 minutes 04 seconds East 1,307.81 feet to a point having Coordinates of X = 1,955,231.00 and Y = 266,793.40, also being the Southeast corner of State Lease No. 21215 having Coordinates of X = 1,955,231.00 and Y = 266,793.40; thence North 26 degrees 14 minutes 08 seconds West 762.33 feet along the east boundary of said State Lease No. 21215 to the Southeast corner of the eastern portion of State Lease No. 20753 having Coordinates of X = 1,954,894.00 and Y = 267,477.20; thence North 10 degrees 45 minutes 42 seconds East 27.45 feet along the east boundary of said eastern portion of State Lease No 20753 to its Northeast corner and a point on the south boundary of State Lease No. 20529 having Coordinates of X = 1,954,899.13 and Y = 267,504.17; thence North 69 degrees 07 minutes 19 seconds East 1,993.79 feet along the south boundary of said State Lease No. 20529 to its Southeast corner and the Southwest corner of said State Lease No. 20528 having Coordinates of X = 1,956,762.00 and Y = 268,214.71; thence North 69 degrees 07 minutes 20 seconds East 1,218.63 feet the point of beginning, containing approximately **2,457.76 acres**, all as more particularly outlined on a plat on file in the Office of Mineral Resources, Department of Natural Resources. All bearings, distances and coordinates are based on Louisiana Coordinate System of 1927, (South Zone).

NOTE: The above description of the Tract nominated for lease has been provided and corrected, where required, exclusively by the nomination party. Any mineral lease selected from this Tract and awarded by the Louisiana State Mineral and Energy Board shall be without warranty of any kind, either express, implied, or statutory, including, but not limited to, the implied warranties of merchantability and fitness for a particular purpose. Should the mineral lease awarded by the Louisiana State Mineral and Energy Board be subsequently modified, cancelled or abrogated due to the existence of conflicting leases, operating agreements, private claims or other future obligations or conditions which may affect all or any portion of the leased Tract, it shall not relieve the Lessee of the obligation to pay any bonus due thereon to the Louisiana State Mineral and Energy Board, nor shall the Louisiana State Mineral and Energy Board be obligated to refund any consideration paid by the Lessor prior to such modification, cancellation, or abrogation, including, but not limited to, bonuses, rentals and royalties.

NOTE: The mineral lease is located in the Atchafalaya Delta WMA under the jurisdiction of the Louisiana Department of Wildlife and Fisheries which has promulgated rules and regulations for the protection of game and wildlife on the aforesaid Tract and, therefore, shall be subject to said rules and regulations, a copy of which shall be attached to the mineral leases. In addition to the specific rules and regulations applicable, the following shall apply regarding operations under this mineral lease:

- No activities will be allowed without written authorization of the Louisiana Department of Wildlife and Fisheries.
- Proposed projects will be evaluated on a case by case basis. Modifications to proposed project features including but not limited to access routes, spoil placement, well sites, flowlines and appurtenant structures may be required by the Department of Wildlife and Fisheries.
- Compliance with the Atchafalaya Delta WMA regulations will be required unless otherwise specified by the Department of Wildlife and Fisheries.
- Compensatory mitigation will be required to offset unavoidable wetland impacts.
- Compensation and/or oyster seed ground surveys may be required by the Department for potential impacts to productive oyster seed grounds located within the management area.
- Removal of all structures, facilities and equipment will be required within 120 days of abandonment unless otherwise agreed to in writing by the Louisiana Department of Wildlife and Fisheries.
- No activities will be allowed during the hunting season unless approved by the Department.
- This tract is located within the emerging Atchafalaya Delta. No activities will be allowed on emergent islands, sub aerial mudflats or vegetated wetlands. Drilling will be restricted to passes and open

water bays. The Louisiana Department of Wildlife and Fisheries (LDWF) shall have discretion to determine access routes. In the event that LDWF approves of dredging for access, LDWF shall have discretion to require hydraulic or spray dredging to reduce environmental impacts.

- Prior to submitting application for wetland permits to Federal and State permitting agencies the leaseholder shall coordinate project details with the Department of Wildlife and Fisheries. Contact person for the Department will be Mike Windham at (504)284-5268.

Additionally, the Department will require a minimum bonus of \$350.00 per acre and a minimum royalty of 25%.

NOTE: The above described tract may be in the vicinity of existing shell reefs where drilling and dredging operations must be conducted in strict conformity with the regulations adopted by the Louisiana Department of Wildlife and Fisheries and/or the U.S. Corps of Engineers, U.S. Army.

NOTE: The State of Louisiana does hereby reserve, and this lease shall be subject to, the imprescriptible right of surface use in the nature of a servitude in favor of the Department of Natural Resources, including its Offices and Commissions, for the sole purpose of implementing, constructing, servicing and maintaining approved coastal zone management and/or restoration projects. Utilization of any and all rights derived under this lease by the mineral lessee, its agents, successors or assigns, shall not interfere with nor hinder the reasonable surface use by the Department of Natural Resources, its Offices or Commissions, as herein above reserved.

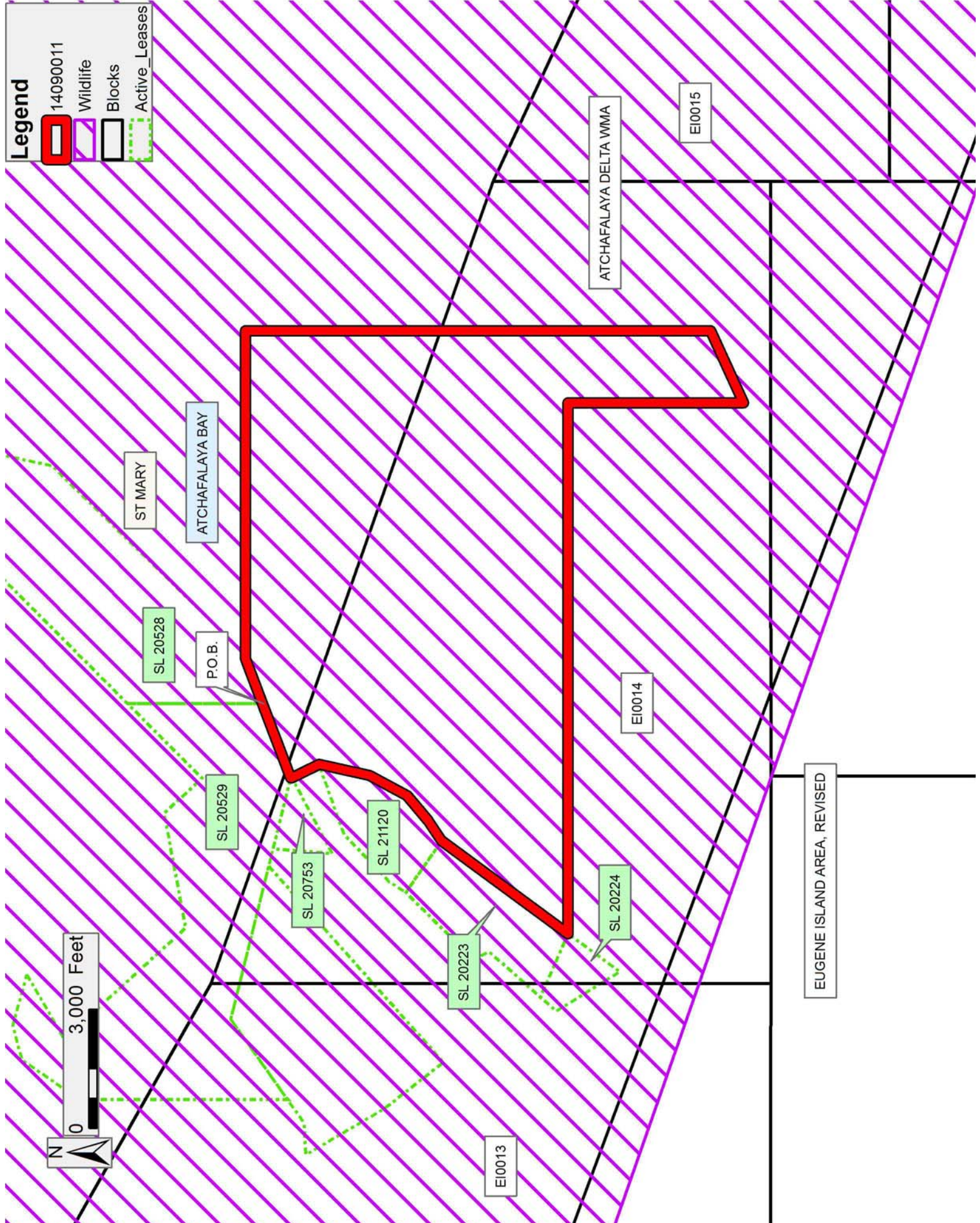
NOTE: This tract is located in an area designated by the Louisiana Legislature or the Wildlife and Fisheries Commission as a Public Oyster Seed Ground, Reservation, or area of Calcasieu or Sabine Lake. Proposed projects occurring in these areas will be evaluated on a case by case basis by Louisiana Department of Wildlife & Fisheries. Modifications to proposed project features including, but not limited to, access routes, well sites, flowlines, and appurtenant structures maybe required by the Louisiana Department of Wildlife and Fisheries. In addition, compensatory mitigation will be required to offset unavoidable habitat impacts.

Applicant: LESLIE M. COOPER

Bidder	Cash Payment	Price/Acre	Rental	Oil	Gas	Other

Legend

- 14090011
- Wildlife
- Blocks
- Active_Leases



TRACT 44072 - St. Mary Parish, Louisiana

A portion of all lands located above the mean high water mark, together with lands now or formerly constituting the beds and bottoms of any water body of whatever description or nature belonging to the State of Louisiana which is now located within the boundaries of the Atchafalaya Delta Wildlife Management Area and not presently under mineral lease by the State of Louisiana on September 10, 2014, and more particularly located as follows: Beginning at a point within the Atchafalaya Delta Wildlife Management Area, having Coordinates of X = 1,966,185.41 and Y = 268,649.00; thence East 10,576.59 feet to a point on the West boundary of State Lease No. 20690 having Coordinates of X = 1,976,762.00 and Y = 268,649.00; thence South 3,130.89 feet along the West boundary of said State Lease No. 20690 to its Southwest corner, also being the Northwest corner of State Lease No. 20693 having Coordinates of X = 1,976,762.00 and Y = 265,518.11; thence West 1,510.00 feet to a point having Coordinates of X = 1,975,252.00 and Y = 265,518.11; thence South 5,592.21 feet to a point having Coordinates of X = 1,975,252.00 and Y = 259,925.91; thence North 65 degrees 00 minutes 58 seconds West 5,843.52 feet to a point having Coordinates of X = 1,969,955.28 and Y = 262,394.00; thence West 3,190.28 feet to a point having Coordinates of X = 1,966,765.00 and Y = 262,394.00; thence South 3,434.55 feet to a point having Coordinates of X = 1,966,765.00 and Y = 258,959.46; thence South 29 degrees 43 minutes 21 seconds East 2,359.94 feet to a point having Coordinates of X = 1,967,935.06 and Y = 256,910.00; thence North 89 degrees 56 minutes 04 seconds West 1,749.66 feet to a point having Coordinates of X = 1,966,185.41 and Y = 256,912.00; thence North 11,737.00 feet to the point of beginning, **LESS AND EXCEPT** IN ITS ENTIRETY, State Lease No. 21122 fully described as follows: Commencing at a point being the point of beginning of the above described nominated tract having Coordinates of X = 1,966,185.41 and Y = 268,649.00; thence South 44 degrees 42 minutes 23 seconds East 5,674.11 feet to the point of beginning of said State Lease No. 21122 having Coordinates of X = 1,970,177.00 and Y = 264,616.30; thence North 32 degrees 23 minutes 28 seconds East 1,338.45 feet to a point having Coordinates of X = 1,970,894.00 and Y = 265,746.50; thence North 66 degrees 44 minutes 06 seconds East 974.22 feet to a point having Coordinates of X = 1,971,789.00 and Y = 266,131.30; thence South 73 degrees 03 minutes 06 seconds East 594.83 feet to a point having Coordinates of X = 1,972,358.00 and Y = 265,957.90; thence South 44 degrees 40 minutes 09 seconds East 1,285.90 feet to a point having Coordinates of X = 1,973,262.00 and Y = 265,043.40; thence South 00 degrees 59 minutes 41 seconds East 921.64 feet to a point having Coordinates of X = 1,973,278.00 and Y = 264,121.90; thence South 39 degrees 53 minutes 17 seconds West 977.72 feet to a point having Coordinates of X = 1,972,651.00 and Y = 263,371.70; thence North 49 degrees 01 minutes 14 seconds West 1,288.83 feet to a point having Coordinates of X = 1,971,678.00 and Y = 264,216.90; thence North 75 degrees 05 minutes 58 seconds West 1,553.23 feet to the point of beginning, containing approximately 111.23 acres; the nominated tract containing approximately **1,549.73 acres**, all as more particularly outlined

on a plat on file in the Office of Mineral Resources, Department of Natural Resources. All bearings, distances and coordinates are based on Louisiana Coordinate System of 1927, (South Zone).

NOTE: The above description of the Tract nominated for lease has been provided and corrected, where required, exclusively by the nomination party. Any mineral lease selected from this Tract and awarded by the Louisiana State Mineral and Energy Board shall be without warranty of any kind, either express, implied, or statutory, including, but not limited to, the implied warranties of merchantability and fitness for a particular purpose. Should the mineral lease awarded by the Louisiana State Mineral and Energy Board be subsequently modified, cancelled or abrogated due to the existence of conflicting leases, operating agreements, private claims or other future obligations or conditions which may affect all or any portion of the leased Tract, it shall not relieve the Lessee of the obligation to pay any bonus due thereon to the Louisiana State Mineral and Energy Board, nor shall the Louisiana State Mineral and Energy Board be obligated to refund any consideration paid by the Lessor prior to such modification, cancellation, or abrogation, including, but not limited to, bonuses, rentals and royalties.

NOTE: The mineral lease is located in the Atchafalaya Delta WMA under the jurisdiction of the Louisiana Department of Wildlife and Fisheries which has promulgated rules and regulations for the protection of game and wildlife on the aforesaid Tract and, therefore, shall be subject to said rules and regulations, a copy of which shall be attached to the mineral leases. In addition to the specific rules and regulations applicable, the following shall apply regarding operations under this mineral lease:

- No activities will be allowed without written authorization of the Louisiana Department of Wildlife and Fisheries.
- Proposed projects will be evaluated on a case by case basis. Modifications to proposed project features including but not limited to access routes, spoil placement, well sites, flowlines and appurtenant structures may be required by the Department of Wildlife and Fisheries.
- Compliance with the Atchafalaya Delta WMA regulations will be required unless otherwise specified by the Department of Wildlife and Fisheries.
- Compensatory mitigation will be required to offset unavoidable wetland impacts.
- Compensation and/or oyster seed ground surveys may be required by the Department for potential impacts to productive oyster seed grounds located within the management area.
- Removal of all structures, facilities and equipment will be required within 120 days of abandonment unless otherwise agreed to in writing by the Louisiana Department of Wildlife and Fisheries.

- No activities will be allowed during the hunting season unless approved by the Department.
- This tract is located within the emerging Atchafalaya Delta. No activities will be allowed on emergent islands, sub aerial mudflats or vegetated wetlands. Drilling will be restricted to passes and open water bays. The Louisiana Department of Wildlife and Fisheries (LDWF) shall have discretion to determine access routes. In the event that LDWF approves of dredging for access, LDWF shall have discretion to require hydraulic or spray dredging to reduce environmental impacts.
- Prior to submitting application for wetland permits to Federal and State permitting agencies the leaseholder shall coordinate project details with the Department of Wildlife and Fisheries. Contact person for the Department will be Mike Windham at (504)284-5268.

Additionally, the Department will require a minimum bonus of \$350.00 per acre and a minimum royalty of 25%.

NOTE: The above described tract may be in the vicinity of existing shell reefs where drilling and dredging operations must be conducted in strict conformity with the regulations adopted by the Louisiana Department of Wildlife and Fisheries and/or the U.S. Corps of Engineers, U.S. Army.





NOTE: The State of Louisiana does hereby reserve, and this lease shall be subject to, the imprescriptible right of surface use in the nature of a servitude in favor of the Department of Natural Resources, including its Offices and Commissions, for the sole purpose of implementing, constructing, servicing and maintaining approved coastal zone management and/or restoration projects. Utilization of any and all rights derived under this lease by the mineral lessee, its agents, successors or assigns, shall not interfere with nor hinder the reasonable surface use by the Department of Natural Resources, its Offices or Commissions, as herein above reserved.

NOTE: This tract is located in an area designated by the Louisiana Legislature or the Wildlife and Fisheries Commission as a Public Oyster Seed Ground, Reservation, or area of Calcasieu or Sabine Lake. Proposed projects occurring in these areas will be evaluated on a case by case basis by Louisiana Department of Wildlife & Fisheries. Modifications to proposed project features including, but not limited to, access routes, well sites, flowlines, and appurtenant structures maybe required by the Louisiana Department of Wildlife and Fisheries. In addition, compensatory mitigation will be required to offset unavoidable habitat impacts.

Applicant: LESLIE M. COOPER

Bidder	Cash Payment	Price/Acre	Rental	Oil	Gas	Other

Legend

-  14090012
-  Wildlife
-  Blocks
-  Active_Leases

