

**TRACT 44076 - Union Parish, Louisiana**

All of the lands now or formerly constituting the beds and bottoms of all water bodies of every nature and description as to which title is vested in the State of Louisiana, together with all islands arising therein and other lands formed by accretion or by reliction, where allowed by law, excepting tax adjudicated lands, and not presently under mineral lease on October 8, 2014, situated in Union Parish, Louisiana, and more particularly described as follows: Beginning at a point having Coordinates of X = 1,995,174.99 and Y = 853,031.07; thence South 35 degrees 00 minutes 00 seconds East 18,480.00 feet to a point having Coordinates of X = 2,005,774.69 and Y = 837,893.14; thence West 18,480.00 feet to a point having Coordinates of X = 1,987,294.69 and Y = 837,893.14; thence North 35 degrees 00 minutes 00 seconds West 18,480.00 feet to a point having Coordinates of X = 1,976,694.99 and Y = 853,031.07; thence East 18,480.00 feet to the point of beginning, (This lease includes only waterbottoms claimed and owned by the state and specifically excludes any School Indemnity land located within the above described tract), containing approximately **50 acres**, all as more particularly outlined on a plat on file in the Office of Mineral Resources, Department of Natural Resources. All bearings, distances and coordinates are based on Louisiana Coordinate System of 1927, (North or South Zone), where applicable.

NOTE: The above description of the Tract nominated for lease has been provided and corrected, where required, exclusively by the nomination party. Any mineral lease selected from this Tract and awarded by the Louisiana State Mineral and Energy Board shall be without warranty of any kind, either express, implied, or statutory, including, but not limited to, the implied warranties of merchantability and fitness for a particular purpose. Should the mineral lease awarded by the Louisiana State Mineral and Energy Board be subsequently modified, cancelled or abrogated due to the existence of conflicting leases, operating agreements, private claims or other future obligations or conditions which may affect all or any portion of the leased Tract, it shall not relieve the Lessee of the obligation to pay any bonus due thereon to the Louisiana State Mineral and Energy Board, nor shall the Louisiana State Mineral and Energy Board be obligated to refund any consideration paid by the Lessor prior to such modification, cancellation, or abrogation, including, but not limited to, bonuses, rentals and royalties.

NOTE: A portion of this tract is located on or adjacent to a Louisiana designated Natural and Scenic River. The applicant must obtain authorization from the Louisiana Department of Wildlife and Fisheries, Scenic Rivers Program prior to initiating any activities within or adjacent to the river, including, but not limited to, crossings by roads and pipelines, well sites, production facilities and water withdrawals.

Applicant: T. S. DUDLEY LAND COMPANY, INC.

Bidder	Cash Payment	Price/Acre	Rental	Oil	Gas	Other

Legend

14100010



0 3,000 Feet

P.O.B.

BAYOU DE LOUTRE

UNION

T23N - R2W

T23N - R2W



**TRACT 44077 - Union Parish, Louisiana**

All of the lands now or formerly constituting the beds and bottoms of all water bodies of every nature and description as to which title is vested in the State of Louisiana, together with all islands arising therein and other lands formed by accretion or by reliction, where allowed by law, excepting tax adjudicated lands, and not presently under mineral lease on October 8, 2014, situated in Union Parish, Louisiana, and more particularly described as follows: Beginning at a point having Coordinates of X = 2,005,774.69 and Y = 837,893.14; thence South 35 degrees 00 minutes 00 seconds East 18,480.00 feet to a point on the Northern boundary of State Lease No. 21317, said point having Coordinates of X = 2,016,374.38 and Y = 822,755.21; thence West along the Northern boundary of State Lease No. 21317 14,087.13 feet to a point having Coordinates of X = 2,002,287.25 and Y = 822,755.21, said point being the Northwest corner of State Lease No. 21317; thence continue West 4,392.87 feet to a point having Coordinates of X = 1,997,894.38 and Y = 822,755.21; thence North 35 degrees 00 minutes 00 seconds West 18,480.00 feet to a point having Coordinates of X = 1,987,294.69 and Y = 837,893.14; thence East 18,480.00 feet to the point of beginning, containing approximately **53 acres**, all as more particularly outlined on a plat on file in the Office of Mineral Resources, Department of Natural Resources. All bearings, distances and coordinates are based on Louisiana Coordinate System of 1927, (North or South Zone), where applicable.

NOTE: The above description of the Tract nominated for lease has been provided and corrected, where required, exclusively by the nomination party. Any mineral lease selected from this Tract and awarded by the Louisiana State Mineral and Energy Board shall be without warranty of any kind, either express, implied, or statutory, including, but not limited to, the implied warranties of merchantability and fitness for a particular purpose. Should the mineral lease awarded by the Louisiana State Mineral and Energy Board be subsequently modified, cancelled or abrogated due to the existence of conflicting leases, operating agreements, private claims or other future obligations or conditions which may affect all or any portion of the leased Tract, it shall not relieve the Lessee of the obligation to pay any bonus due thereon to the Louisiana State Mineral and Energy Board, nor shall the Louisiana State Mineral and Energy Board be obligated to refund any consideration paid by the Lessor prior to such modification, cancellation, or abrogation, including, but not limited to, bonuses, rentals and royalties.

NOTE: A portion of this tract is located on or adjacent to a Louisiana designated Natural and Scenic River. The applicant must obtain authorization from the Louisiana Department of Wildlife and Fisheries, Scenic Rivers Program prior to initiating any activities within or adjacent to the river, including, but not limited to, crossings by roads and pipelines, well sites, production facilities and water withdrawals.

Applicant: T. S. DUDLEY LAND COMPANY, INC.

Bidder	Cash Payment	Price/Acre	Rental	Oil	Gas	Other



**Legend**

14100011



Active\_Leases



UNION

T23N - R1W

P.O.B.

BAYOU DE LOUTRE

SL 21317



**TRACT 44078 - Union Parish, Louisiana**

All of the lands now or formerly constituting the beds and bottoms of all water bodies of every nature and description as to which title is vested in the State of Louisiana, together with all islands arising therein and other lands formed by accretion or by reliction, where allowed by law, excepting tax adjudicated lands, and not presently under mineral lease on October 8, 2014, situated in Union Parish, Louisiana, and more particularly described as follows: Beginning at a point having Coordinates of X = 1,940,552.85 and Y = 817,618.92; thence South 67 degrees 07 minutes 04 seconds East 10,288.30 feet to a point having Coordinates of X = 1,950,031.52 and Y = 813,618.44; said point being on the West boundary of State Lease No. 20880; thence along the West boundary of State Lease No. 20880; thence South 00 degrees 09 minutes 03 seconds West 6,997.57 feet to a point having Coordinates of X = 1,950,013.09 and Y = 806,620.89; thence South 89 degrees 59 minutes 43 seconds West 18,460.24 feet to a point having Coordinates of X = 1,931,552.85 and Y = 806,619.40; thence North 11,000.00 feet to a point having Coordinates of X = 1,931,552.85 and Y = 817,619.40; thence South 89 degrees 59 minutes 49 seconds East 9,000.00 feet to the point of beginning, **LESS AND EXCEPT** any right, title, and interest in lands owned by and not under lease from the State of Louisiana, on behalf of the Union Parish School Board, situated in Section 16, Township 22 North, Range 3 West, Union Parish, Louisiana, contained within the above described tract, containing approximately **36 acres**, all as more particularly outlined on a plat on file in the Office of Mineral Resources, Department of Natural Resources. All bearings, distances and coordinates are based on Louisiana Coordinate System of 1927, (North or South Zone), where applicable.

NOTE: The above description of the Tract nominated for lease has been provided and corrected, where required, exclusively by the nomination party. Any mineral lease selected from this Tract and awarded by the Louisiana State Mineral and Energy Board shall be without warranty of any kind, either express, implied, or statutory, including, but not limited to, the implied warranties of merchantability and fitness for a particular purpose. Should the mineral lease awarded by the Louisiana State Mineral and Energy Board be subsequently modified, cancelled or abrogated due to the existence of conflicting leases, operating agreements, private claims or other future obligations or conditions which may affect all or any portion of the leased Tract, it shall not relieve the Lessee of the obligation to pay any bonus due thereon to the Louisiana State Mineral and Energy Board, nor shall the Louisiana State Mineral and Energy Board be obligated to refund any consideration paid by the Lessor prior to such modification, cancellation, or abrogation, including, but not limited to, bonuses, rentals and royalties.

NOTE: A portion of this tract is located on or adjacent to a Louisiana designated Natural and Scenic River. The applicant must obtain authorization from the Louisiana Department of Wildlife and Fisheries, Scenic Rivers Program prior to initiating any activities within or

adjacent to the river, including, but not limited to, crossings by roads and pipelines, well sites, production facilities and water withdrawals.

Applicant: T.S. DUDLEY LAND COMPANY, INC.

Bidder	Cash Payment	Price/Acre	Rental	Oil	Gas	Other



**Legend**

14100012



Active\_Leases



0 3,000 Feet

UNION

T22N - R3W

T22N - R4W

P.O.B.

SL 20880

CORNEY CREEK



**TRACT 44079 - St. Landry Parish, Louisiana**

All of the lands now or formerly constituting the beds and bottoms of all water bodies of every nature and description as to which title is vested in the State of Louisiana, together with all islands arising therein and other lands formed by accretion or by reliction, where allowed by law, excepting tax adjudicated lands, and not presently under mineral lease on October 8, 2014, situated in St. Landry Parish, Louisiana, and more particularly described as follows: Beginning at a point having Coordinates of X = 1,836,538.00 and Y = 762,904.00; thence East approximately 13,375 feet to a point on the boundary of State Lease No. 7715, as amended having a Coordinate of Y = 762,904.00; thence along the boundary of said State Lease No. 7715 the following courses: South 00 degrees 42 minutes 56 seconds West approximately 2,144 feet, North 89 degrees 58 minutes 29 seconds East 2,671.80 feet and North 00 degrees 04 minutes 38 seconds West approximately 2,142 feet to the point of intersection with an East West line having a Coordinate of Y = 762,904.00; thence East approximately 2,463 feet to a point having Coordinates of X = 1,855,018.00 and Y = 762,904.00; thence South approximately 2,146 feet to a point on the boundary of State Lease No. 7716, as amended having a Coordinate of X = 1,855,018.00; thence along the boundary of said State Lease No. 7716 the following courses: North 89 degrees 54 minutes 36 seconds West approximately 846 feet, South 00 degrees 04 minutes 36 seconds West 995.31 feet, South 00 degrees 01 minutes 29 seconds West 1,631.06 feet and South 89 degrees 54 minutes 36 seconds East approximately 848 feet to the point of intersection with a North South line having a Coordinate of X = 1,855,018.00; thence South approximately 2,853 feet to a point having Coordinates of X = 1,855,018.00 and Y = 755,278.00; thence West 18,480.00 feet to a point having Coordinates of X = 1,836,538.00 and Y = 755,278.00; thence North 7,626.00 feet to the point of beginning, containing approximately **74 acres**, all as more particularly outlined on a plat on file in the Office of Mineral Resources, Department of Natural Resources. All bearings, distances and coordinates are based on Louisiana Coordinate System of 1927, (North or South Zone), where applicable.

NOTE: The above description of the Tract nominated for lease has been provided and corrected, where required, exclusively by the nomination party. Any mineral lease selected from this Tract and awarded by the Louisiana State Mineral and Energy Board shall be without warranty of any kind, either express, implied, or statutory, including, but not limited to, the implied warranties of merchantability and fitness for a particular purpose. Should the mineral lease awarded by the Louisiana State Mineral and Energy Board be subsequently modified, cancelled or abrogated due to the existence of conflicting leases, operating agreements, private claims or other future obligations or conditions which may affect all or any portion of the leased Tract, it shall not relieve the Lessee of the obligation to pay any bonus due thereon to the Louisiana State Mineral and Energy Board, nor shall the Louisiana State Mineral and Energy Board be obligated to refund any consideration paid by the Lessor prior to such

modification, cancellation, or abrogation, including, but not limited to, bonuses, rentals and royalties.

Applicant: CRD & ASSOCIATES

Bidder	Cash Payment	Price/Acre	Rental	Oil	Gas	Other



**Legend**  
14100003  
Active\_Leases



ST LANDRY

T3S - R6E

P.O.B.

SL 7715

SL 7716

BAYOU ROUGE

T4S - R6E



**TRACT 44080 - Plaquemines Parish, Louisiana**

All of the lands now or formerly constituting the beds and bottoms of all water bodies of every nature and description as to which title is vested in the State of Louisiana, together with all islands arising therein and other lands formed by accretion or by reliction, where allowed by law, excepting tax adjudicated lands, and not presently under mineral lease on October 8, 2014, situated in Plaquemines Parish, Louisiana, and more particularly described as follows: Beginning at a point having Coordinates of X = 2,490,961.68 and Y = 382,483.57; thence North 87 degrees 21 minutes 07 seconds East 10,718.13 feet to a point having Coordinates of X = 2,501,668.36 and Y = 382,978.78; thence South 02 degrees 15 minutes 11 seconds East 5,565.74 feet to a point having Coordinates of X = 2,501,887.16 and Y = 377,417.34; thence South 5,280.00 feet to a point having Coordinates of X = 2,501,887.16 and Y = 372,137.34; thence West 10,713.98 feet to a point having Coordinates of X = 2,491,173.18 and Y = 372,137.34; thence North 4,972.14 feet to a point having Coordinates of X = 2,491,173.18 and Y = 377,109.48; thence North 02 degrees 15 minutes 14 seconds West 5,378.25 feet to the point of beginning, **LESS AND EXCEPT** that portion of 2009 12 30 Apache to Apache Oil AND Gas Mineral Lease, recorded in Plaquemines Parish, File No. 2010 00000316, Book No. 1218, Page No. 840, that may lie within the above described tract, containing approximately **2,066 acres**, all as more particularly outlined on a plat on file in the Office of Mineral Resources, Department of Natural Resources. All bearings, distances and coordinates are based on Louisiana Coordinate System of 1927, (North or South Zone), where applicable.

NOTE: The above description of the Tract nominated for lease has been provided and corrected, where required, exclusively by the nomination party. Any mineral lease selected from this Tract and awarded by the Louisiana State Mineral and Energy Board shall be without warranty of any kind, either express, implied, or statutory, including, but not limited to, the implied warranties of merchantability and fitness for a particular purpose. Should the mineral lease awarded by the Louisiana State Mineral and Energy Board be subsequently modified, cancelled or abrogated due to the existence of conflicting leases, operating agreements, private claims or other future obligations or conditions which may affect all or any portion of the leased Tract, it shall not relieve the Lessee of the obligation to pay any bonus due thereon to the Louisiana State Mineral and Energy Board, nor shall the Louisiana State Mineral and Energy Board be obligated to refund any consideration paid by the Lessor prior to such modification, cancellation, or abrogation, including, but not limited to, bonuses, rentals and royalties.

NOTE: The State of Louisiana does hereby reserve, and this lease shall be subject to, the imprescriptible right of surface use in the nature of a servitude in favor of the Department of Natural Resources, including its Offices and Commissions, for the sole purpose of implementing, constructing, servicing and maintaining approved coastal zone management and/or restoration projects. Utilization of any and all rights derived

under this lease by the mineral lessee, its agents, successors or assigns, shall not interfere with nor hinder the reasonable surface use by the Department of Natural Resources, its Offices or Commissions, as herein above reserved.

Applicant: THEOPHILUS OIL, GAS & LAND SERVICES, LLC

Bidder	Cash Payment	Price/Acre	Rental	Oil	Gas	Other



Legend



14100024

0 3,000 Feet



PLAQUEMINES

BAYOU LONG

P.O.B.

LAKE BATOLA





**TRACT 44081 - Plaquemines Parish, Louisiana**

All of the lands now or formerly constituting the beds and bottoms of all water bodies of every nature and description as to which title is vested in the State of Louisiana, together with all islands arising therein and other lands formed by accretion or by reliction, where allowed by law, excepting tax adjudicated lands, and not presently under mineral lease on October 8, 2014, situated in Plaquemines Parish, Louisiana, and more particularly described as follows: Beginning at a point having Coordinates of X = 2,480,423.79 and Y = 376,796.62; North 88 degrees 19 minutes 58 seconds East 10,753.94 feet to a point having Coordinates of X = 2,491,173.18 and Y = 377,109.48; thence South 4,972.14 feet to a point having Coordinates of X = 2,491,173.18 and Y = 372,137.34; thence South 5,280.00 feet to a point having Coordinates of X = 2,491,173.18 and Y = 366,857.34; thence West 10,749.39 feet to a point having Coordinates of X = 2,480,423.79 and Y = 366,857.34; thence North 9,939.28 feet to the point of beginning, **LESS AND EXCEPT** that portion of 2009 12 30 Apache to Apache Oil AND Gas Mineral Lease, recorded in Plaquemines Parish, File No. 2010 00000316, Book No. 1218, Page No. 840, that may lie within the above described tract, containing approximately **1,361 acres**, all as more particularly outlined on a plat on file in the Office of Mineral Resources, Department of Natural Resources. All bearings, distances and coordinates are based on Louisiana Coordinate System of 1927, (North or South Zone), where applicable.

NOTE: The above description of the Tract nominated for lease has been provided and corrected, where required, exclusively by the nomination party. Any mineral lease selected from this Tract and awarded by the Louisiana State Mineral and Energy Board shall be without warranty of any kind, either express, implied, or statutory, including, but not limited to, the implied warranties of merchantability and fitness for a particular purpose. Should the mineral lease awarded by the Louisiana State Mineral and Energy Board be subsequently modified, cancelled or abrogated due to the existence of conflicting leases, operating agreements, private claims or other future obligations or conditions which may affect all or any portion of the leased Tract, it shall not relieve the Lessee of the obligation to pay any bonus due thereon to the Louisiana State Mineral and Energy Board, nor shall the Louisiana State Mineral and Energy Board be obligated to refund any consideration paid by the Lessor prior to such modification, cancellation, or abrogation, including, but not limited to, bonuses, rentals and royalties.

NOTE: The State of Louisiana does hereby reserve, and this lease shall be subject to, the imprescriptible right of surface use in the nature of a servitude in favor of the Department of Natural Resources, including its Offices and Commissions, for the sole purpose of implementing, constructing, servicing and maintaining approved coastal zone management and/or restoration projects. Utilization of any and all rights derived under this lease by the mineral lessee, its agents, successors or assigns, shall not interfere with nor hinder the reasonable surface use by the

Department of Natural Resources, its Offices or Commissions, as herein above reserved.

Applicant: THEOPHILUS OIL, GAS & LAND SERVICES, LLC

Bidder	Cash Payment	Price/Acre	Rental	Oil	Gas	Other



Legend

14100023



Active\_Leases



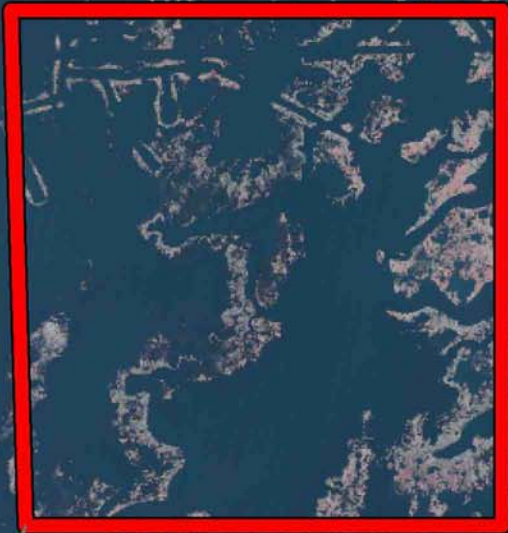
0 3,000 Feet



PLAQUEMINES

THE GAREEK

P.O.B.



**TRACT 44082 - Jefferson Parish, Louisiana**

All of the lands now or formerly constituting the beds and bottoms of all water bodies of every nature and description as to which title is vested in the State of Louisiana, together with all islands arising therein and other lands formed by accretion or by reliction, where allowed by law, excepting tax adjudicated lands, and not presently under mineral lease on October 8, 2014, situated in Jefferson Parish, Louisiana, and more particularly described as follows: Beginning at a point having Coordinates of X = 2,431,127.83 and Y = 275,532.31, said point being the northwest corner of State of Louisiana State Lease No. 15631, as amended; Thence West 11,443 feet, more or less, to a point on the eastern boundaries of State of Louisiana State Lease No. 356, as amended, and State of Louisiana State Lease No. 1217, as amended, said point having a Coordinate of Y = 275,532.31; Thence Northerly 388 feet, more or less, on and along said eastern boundaries of said State of Louisiana State Lease No. 356, as amended, and said State of Louisiana State Lease No. 1217, as amended, to a northeast corner of said State of Louisiana State Lease No. 356, as amended, and said State of Louisiana State Lease No. 1217, as amended; Thence Northerly 10,102 feet, more or less, to a point having Coordinates of X = 2,419,678.19 and Y = 286,022.31; Thence East 13,307.11 feet to a point having Coordinates of X = 2,432,985.30 and Y = 286,022.31; Thence South 10,490.00 feet to a point having Coordinates of X = 2,432,985.30 and Y = 275,532.31, said point being on the northern boundary of said State of Louisiana State Lease No. 15631, as amended; Thence West 1,858.47 feet on and along said northern boundary of said State of Louisiana State Lease No. 15631, as amended, to the Point of Beginning, **LESS AND EXCEPT**, that portion, if any, of State of Louisiana State Lease No. 356, as amended, and State of Louisiana State Lease No. 1217, as amended, that may lie within the above described tract, containing approximately **2,470 acres**, all as more particularly outlined on a plat on file in the Office of Mineral Resources, Department of Natural Resources. All bearings, distances and coordinates are based on Louisiana Coordinate System of 1927, (North or South Zone), where applicable.

NOTE: The above description of the Tract nominated for lease has been provided and corrected, where required, exclusively by the nomination party. Any mineral lease selected from this Tract and awarded by the Louisiana State Mineral and Energy Board shall be without warranty of any kind, either express, implied, or statutory, including, but not limited to, the implied warranties of merchantability and fitness for a particular purpose. Should the mineral lease awarded by the Louisiana State Mineral and Energy Board be subsequently modified, cancelled or abrogated due to the existence of conflicting leases, operating agreements, private claims or other future obligations or conditions which may affect all or any portion of the leased Tract, it shall not relieve the Lessee of the obligation to pay any bonus due thereon to the Louisiana State Mineral and Energy Board, nor shall the Louisiana State Mineral and Energy Board be obligated to refund any consideration paid by the Lessor prior to such



modification, cancellation, or abrogation, including, but not limited to, bonuses, rentals and royalties.

NOTE: The State of Louisiana does hereby reserve, and this lease shall be subject to, the imprescriptible right of surface use in the nature of a servitude in favor of the Department of Natural Resources, including its Offices and Commissions, for the sole purpose of implementing, constructing, servicing and maintaining approved coastal zone management and/or restoration projects. Utilization of any and all rights derived under this lease by the mineral lessee, its agents, successors or assigns, shall not interfere with nor hinder the reasonable surface use by the Department of Natural Resources, its Offices or Commissions, as herein above reserved.

NOTE: This tract is located in an area designated by the Louisiana Legislature or the Wildlife and Fisheries Commission as a Public Oyster Seed Ground, Reservation, or area of Calcasieu or Sabine Lake. Proposed projects occurring in these areas will be evaluated on a case by case basis by Louisiana Department of Wildlife & Fisheries. Modifications to proposed project features including, but not limited to, access routes, well sites, flowlines, and appurtenant structures maybe required by the Louisiana Department of Wildlife and Fisheries. In addition, compensatory mitigation will be required to offset unavoidable habitat impacts.

Applicant: ROBERT A. SCHROEDER, INC.

Bidder	Cash Payment	Price/Acre	Rental	Oil	Gas	Other



**Legend**

14100016



Active\_Leases



PLAQUEMINES

BARATARIA BAY

SL 15631

P.O.B.

JEFFERSON

MUD LAKE

T19S - R24E

SL 356

HACKBERRY BAY

0 3,000 Feet



**TRACT 44083 - Plaquemines Parish, Louisiana**

All of the lands now or formerly constituting the beds and bottoms of all water bodies of every nature and description as to which title is vested in the State of Louisiana, together with all islands arising therein and other lands formed by accretion or by reliction, where allowed by law, excepting tax adjudicated lands, and not presently under mineral lease on October 8, 2014, situated in Plaquemines Parish, Louisiana, and more particularly described as follows: Beginning at a point having Coordinates of X = 2,464,848.51 and Y = 268,202.33; thence Easterly approximately 8,055 feet to the Southwest corner of State Lease No. 2028, as amended; thence North 89 degrees 15 minutes 00 seconds East approximately 7,210 feet along the South boundary of said State Lease No. 2028 to its Southeast corner, said point also being a point of intersection with the Western boundary of State Lease 2104, as amended; thence continue easterly approximately 65 feet to a point on the West boundary of the Western portion of State Lease No. 212, as amended; thence Southerly along its boundary to its Southwest corner; thence South 01 degree 41 minutes 35 seconds East approximately 2,541 feet to a point on the North boundary of the North portion of State Lease No. 17990, as amended having Coordinates of X = 2,480,504.11 and Y = 264,061.01; thence South 72 degrees 07 minutes 48 seconds West 529.66 feet to its Northwest corner and the Northeast corner of State Lease No. 18907, as amended, having Coordinates of X = 2,480,000.00 and Y = 263,898.47; thence along the boundaries of said State Lease No. 18907 the following courses: South 72 degrees 07 minutes 48 seconds West 1,174.78 feet to point having Coordinates of X = 2,478,881.89 and Y = 263,537.99, South 11 degrees 39 minutes 33 seconds West 57.89 feet to a point having Coordinates of X = 2,478,870.19 and Y = 263,481.29, South 14 degrees 16 minutes 25 seconds 122.89 feet to a point having Coordinates of X = 2,478,839.90 and Y = 263,362.19, South 07 degrees 04 minutes 23 seconds West 205.46 feet to a point having Coordinates of X = 2,478,814.60 and Y = 263,158.30, South 14 degrees 58 minutes 03 seconds West 71.63 feet to a point having Coordinates of X = 2,478,796.10 and Y = 263,089.10, South 24 degrees 09 minutes 07 seconds West 82.85 feet to a point having Coordinates of X = 2,478,762.20 and Y = 263,013.50, South 38 degrees 25 minutes 30 seconds East 122.96 feet to a point having Coordinates of X = 2,478,838.62 and Y = 262,917.17, South 63 degrees 55 minutes 14 seconds West 154.24 feet to a point having Coordinates of X = 2,478,700.08 and Y = 262,849.36, South 00 degrees 46 minutes 01 seconds East 651.37 feet to a point having Coordinates of X = 2,478,708.80 and Y = 262,198.05 and South 64 degrees 23 minutes 56 seconds East 212.75 feet to a point having Coordinates of X = 2,478,900.66 and Y = 262,106.12; thence South 88 degrees 00 minutes 53 seconds West 13,961.25 feet to a point having Coordinates of X = 2,464,947.79 and Y = 261,622.45; thence North 00 degrees 51 minutes 52 seconds West 6,580.63 feet to the point of beginning, **LESS AND EXCEPT** that portion, if any, of State Lease No. 2104 and 2028 which may lie within the above described tract, containing approximately **2,142 acres**, all as more particularly outlined on a plat on file in the Office of Mineral Resources, Department of Natural Resources. All bearings,

distances and coordinates are based on Louisiana Coordinate System of 1927, (North or South Zone), where applicable.

NOTE: The above description of the Tract nominated for lease has been provided and corrected, where required, exclusively by the nomination party. Any mineral lease selected from this Tract and awarded by the Louisiana State Mineral and Energy Board shall be without warranty of any kind, either express, implied, or statutory, including, but not limited to, the implied warranties of merchantability and fitness for a particular purpose. Should the mineral lease awarded by the Louisiana State Mineral and Energy Board be subsequently modified, cancelled or abrogated due to the existence of conflicting leases, operating agreements, private claims or other future obligations or conditions which may affect all or any portion of the leased Tract, it shall not relieve the Lessee of the obligation to pay any bonus due thereon to the Louisiana State Mineral and Energy Board, nor shall the Louisiana State Mineral and Energy Board be obligated to refund any consideration paid by the Lessor prior to such modification, cancellation, or abrogation, including, but not limited to, bonuses, rentals and royalties.

NOTE: The State of Louisiana does hereby reserve, and this lease shall be subject to, the imprescriptible right of surface use in the nature of a servitude in favor of the Department of Natural Resources, including its Offices and Commissions, for the sole purpose of implementing, constructing, servicing and maintaining approved coastal zone management and/or restoration projects. Utilization of any and all rights derived under this lease by the mineral lessee, its agents, successors or assigns, shall not interfere with nor hinder the reasonable surface use by the Department of Natural Resources, its Offices or Commissions, as herein above reserved.

Applicant: DAY EXPLORATION

Bidder	Cash Payment	Price/Acre	Rental	Oil	Gas	Other



**Legend**

14100020



Active\_Leases



0 3,000 Feet

PLAQUEMINES

SL 20459

SL 2028

SL 2104

SL 2104

SL 21085

P.O.B.

BARATARIA BAY

**TRACT 44084 - Plaquemines Parish, Louisiana**

All of the lands now or formerly constituting the beds and bottoms of all water bodies of every nature and description as to which title is vested in the State of Louisiana, together with all islands arising therein and other lands formed by accretion or by reliction, where allowed by law, excepting tax adjudicated lands, and not presently under mineral lease on October 8, 2014, situated in Plaquemines Parish, Louisiana, and more particularly described as follows: Beginning at the Southwest corner of State Lease No. 21085 having Coordinates of X = 2,474,841.13 and Y = 254,410.13; thence South 87 degrees 55 minutes 55 seconds West 9,785.56 feet to a point having Coordinates of X = 2,465,061.94 and Y = 254,057.01; thence North 00 degrees 51 minutes 52 seconds West 7,566.30 feet to a point having Coordinates of X = 2,464,947.79 and Y = 261,622.45; thence North 87 degrees 58 minutes 02 seconds East approximately 9,954 feet to a point on the Western boundary of State Lease No. 2104; thence Southerly approximately 1,556 feet to a point on the Northern boundary line of said State Lease No. 21085; thence Westerly approximately 76 feet along the Northern boundary line of said State Lease No. 21085 to its Northwest corner having Coordinates of X = 2,474,841.13 and Y = 260,416.69; thence South 6,006.56 feet along the west boundary of said State Lease No. 21085 to the point of beginning, **LESS AND EXCEPT** that portion, if any, of State Lease No. 2104 which may lie within the above described tract, containing approximately **1,685 acres**, all as more particularly outlined on a plat on file in the Office of Mineral Resources, Department of Natural Resources. All bearings, distances and coordinates are based on Louisiana Coordinate System of 1927, (North or South Zone), where applicable.

NOTE: The above description of the Tract nominated for lease has been provided and corrected, where required, exclusively by the nomination party. Any mineral lease selected from this Tract and awarded by the Louisiana State Mineral and Energy Board shall be without warranty of any kind, either express, implied, or statutory, including, but not limited to, the implied warranties of merchantability and fitness for a particular purpose. Should the mineral lease awarded by the Louisiana State Mineral and Energy Board be subsequently modified, cancelled or abrogated due to the existence of conflicting leases, operating agreements, private claims or other future obligations or conditions which may affect all or any portion of the leased Tract, it shall not relieve the Lessee of the obligation to pay any bonus due thereon to the Louisiana State Mineral and Energy Board, nor shall the Louisiana State Mineral and Energy Board be obligated to refund any consideration paid by the Lessor prior to such modification, cancellation, or abrogation, including, but not limited to, bonuses, rentals and royalties.

NOTE: The State of Louisiana does hereby reserve, and this lease shall be subject to, the imprescriptible right of surface use in the nature of a servitude in favor of the Department of Natural Resources, including its Offices and Commissions, for the sole purpose of implementing, constructing, servicing and maintaining approved coastal zone management

and/or restoration projects. Utilization of any and all rights derived under this lease by the mineral lessee, its agents, successors or assigns, shall not interfere with nor hinder the reasonable surface use by the Department of Natural Resources, its Offices or Commissions, as herein above reserved.

Applicant: DAY EXPLORATION

Bidder	Cash Payment	Price/Acre	Rental	Oil	Gas	Other



**Legend**  
14100019  
Active\_Leases



0 3,000 Feet

PLAQUEMINES

BARATARIA BAY

SL 2104

SL 21085

P.O.B.

**TRACT 44085 - Plaquemines Parish, Louisiana**

All of the lands now or formerly constituting the beds and bottoms of all water bodies of every nature and description as to which title is vested in the State of Louisiana, together with all islands arising therein and other lands formed by accretion or by reliction, where allowed by law, excepting tax adjudicated lands, and not presently under mineral lease on October 8, 2014, situated in Plaquemines Parish, Louisiana, and more particularly described as follows: Beginning at Southwest corner of State Lease No. 21085 having Coordinates of X = 2,474,841.13 and Y = 254,410.13; thence East 3,968.82 feet along the southern boundary of said State Lease No. 21085 to its Southeast having Coordinates of X = 2,478,809.95 and Y = 254,410.14; thence South 00 degrees 48 minutes 48 seconds East 4,150.39 feet to a point having Coordinates of X = 2,478,868.87 and Y = 250,260.17; thence East 48.30 feet to the Northwest corner of State Lease No. 21188 having Coordinates of X = 2,478,917.17 and Y = 250,260.17; thence South 01 degrees 25 minutes 20 seconds East 3,957.67 feet along the West boundary of said State Lease No. 21188 to its Southwest corner having Coordinates of X = 2,479,015.41 and Y = 246,303.72; thence South 87 degrees 56 minutes 41 seconds West 13,799.73 feet to a point having Coordinates of X = 2,465,224.56 and Y = 245,808.81; thence North 01 degrees 07 minutes 46 seconds West 8,249.80 feet to a point having Coordinates of X = 2,465,061.94 and Y = 254,057.01; thence North 87 degrees 55 minutes 55 seconds East 9,785.56 feet to the point of beginning, containing approximately **2,490 acres**, all as more particularly outlined on a plat on file in the Office of Mineral Resources, Department of Natural Resources. All bearings, distances and coordinates are based on Louisiana Coordinate System of 1927, (North or South Zone), where applicable.

NOTE: The above description of the Tract nominated for lease has been provided and corrected, where required, exclusively by the nomination party. Any mineral lease selected from this Tract and awarded by the Louisiana State Mineral and Energy Board shall be without warranty of any kind, either express, implied, or statutory, including, but not limited to, the implied warranties of merchantability and fitness for a particular purpose. Should the mineral lease awarded by the Louisiana State Mineral and Energy Board be subsequently modified, cancelled or abrogated due to the existence of conflicting leases, operating agreements, private claims or other future obligations or conditions which may affect all or any portion of the leased Tract, it shall not relieve the Lessee of the obligation to pay any bonus due thereon to the Louisiana State Mineral and Energy Board, nor shall the Louisiana State Mineral and Energy Board be obligated to refund any consideration paid by the Lessor prior to such modification, cancellation, or abrogation, including, but not limited to, bonuses, rentals and royalties.

NOTE: The State of Louisiana does hereby reserve, and this lease shall be subject to, the imprescriptible right of surface use in the nature of a servitude in favor of the Department of Natural Resources, including its Offices and Commissions, for the sole purpose of implementing,

constructing, servicing and maintaining approved coastal zone management and/or restoration projects. Utilization of any and all rights derived under this lease by the mineral lessee, its agents, successors or assigns, shall not interfere with nor hinder the reasonable surface use by the Department of Natural Resources, its Offices or Commissions, as herein above reserved.

Applicant: DAY EXPLORATION

Bidder	Cash Payment	Price/Acre	Rental	Oil	Gas	Other



**Legend**

14100018



Active\_Leases



0 3,000 Feet

PLAQUEMINES

BARATARIA BAY

P.O.B.

SL 21085

SL 21188