

TRACT 44583 - Vermilion Parish, Louisiana

All of the lands now or formerly constituting the beds and bottoms of all water bodies of every nature and description as to which title is vested in the State of Louisiana, together with all islands arising therein and other lands formed by accretion or by reliction, where allowed by law, excepting tax adjudicated lands, and not presently under mineral lease on September 14, 2016, situated in Vermilion Parish, Louisiana, and more particularly described as follows: Beginning at a point having Coordinates of X = 1,766,282.69 and Y = 498,578.49; thence South 89 degrees 35 minutes 53 seconds East 1,104.16 feet to a point having Coordinates of X = 1,767,386.82 and Y = 498,570.75; thence South 46 degrees 21 minutes 32 seconds East 5,560.27 feet to a point having Coordinates X = 1,771,410.67 and Y = 494,733.40; thence South 53 degrees 09 minutes 28 seconds West 11,262.92 feet to a point having Coordinates X = 1,762,397.08 and Y = 487,979.98; thence North 46 degrees 21 minutes 32 seconds West 6,237.85 feet to a point having Coordinates of X = 1,757,882.88 and Y = 492,284.96; thence North 53 degrees 09 minutes 28 seconds East 10,495.97 feet to the point of beginning, containing approximately **53 acres**, all as more particularly outlined on a plat on file in the Office of Mineral Resources, Department of Natural Resources. All bearings, distances and coordinates are based on Louisiana Coordinate System of 1927, (North or South Zone), where applicable.

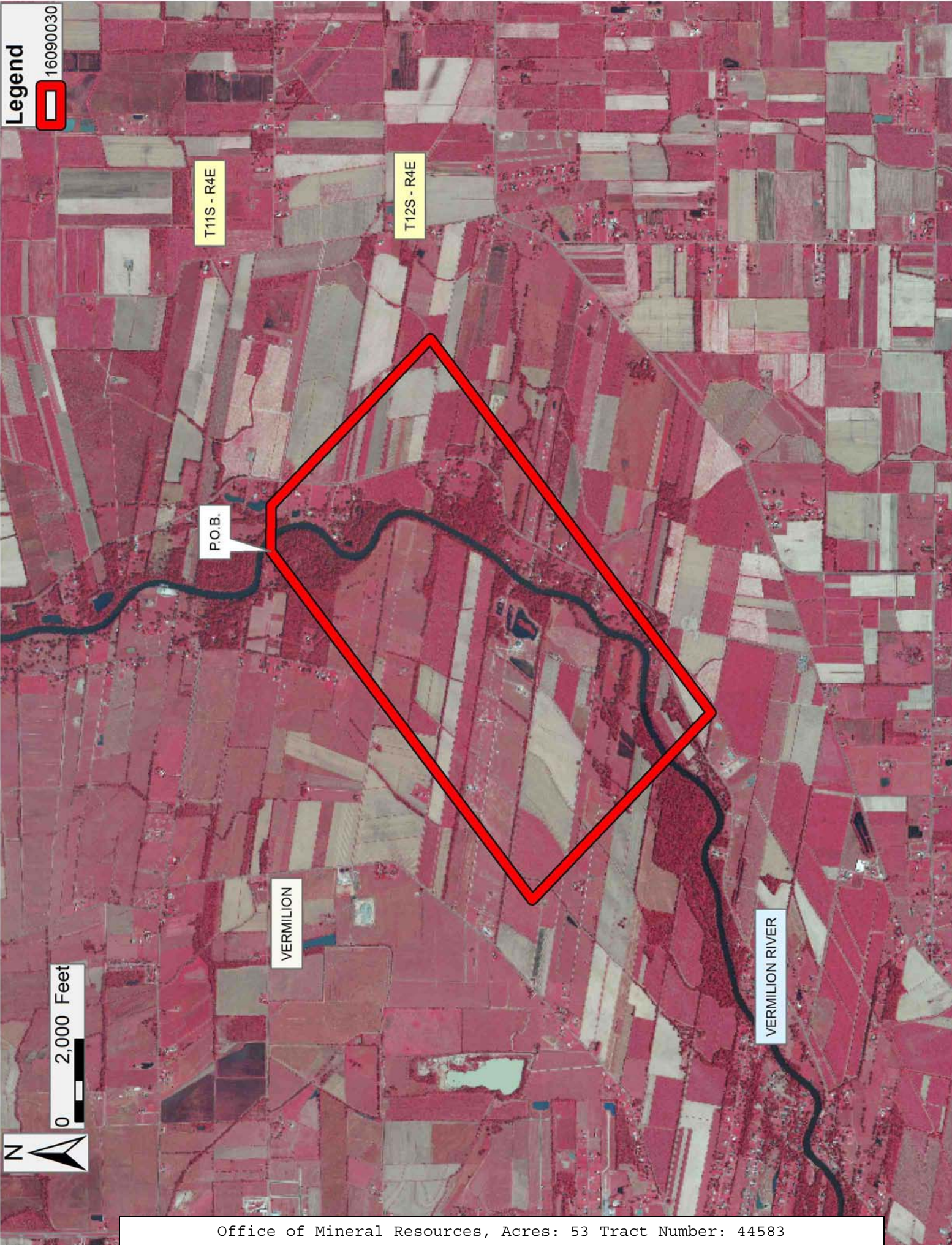
NOTE: The above description of the Tract nominated for the purpose of acquiring a mineral lease or a geophysical agreement has been provided and corrected, where required, exclusively by the nominating party. Any mineral lease or geophysical agreement selected from this Tract and awarded by the Louisiana State Mineral and Energy Board shall be without warranty of any kind, either express, implied or statutory including, but not limited to, title or the implied warranties of merchantability and fitness for a particular purpose.

An error or omission in the nominating party's Tract description may require that a State mineral lease or geophysical agreement be modified, canceled or abrogated due to the existence of conflicting leases, operating agreements, private claims or other future obligations or conditions within the Tract described. In such case, however, the Louisiana State Mineral and Energy Board shall not be obligated to refund any consideration paid by the Lessee prior to such modification, cancellation or abrogation including, but not limited to, bonuses, rentals and royalties.

| Bidder | Cash Payment | Price/Acre | Rental | Oil | Gas | Other |
|--------|--------------|------------|--------|-----|-----|-------|
| | | | | | | |
| | | | | | | |
| | | | | | | |

| | | | | | | |
|--|--|--|--|--|--|--|
| | | | | | | |
|--|--|--|--|--|--|--|

Applicant: PATRICK L. DONOHUE PETROLEUM PROPERTIES, INC.



TRACT 44584 - Vermilion Parish, Louisiana

All of the lands now or formerly constituting the beds and bottoms of all water bodies of every nature and description as to which title is vested in the State of Louisiana, together with all islands arising therein and other lands formed by accretion or by reliction, where allowed by law, excepting tax adjudicated lands, and not presently under mineral lease on September 14, 2016, situated in Vermilion Parish, Louisiana, and more particularly described as follows: Beginning at a point having Coordinates of X = 1,740,120.00 feet and Y = 497,577.33 feet; thence North 89 degrees 59 minutes 58 seconds East a distance of 4,399.09 feet to a point having Coordinates of X = 1,744,519.09 feet and Y = 497,577.37 feet; thence South 00 degrees 23 minutes 08 seconds West a distance of 4,296.73 feet to a point having the Coordinates X = 1,744,490.18 feet and Y = 493,280.74 feet; thence South 00 degrees 41 minutes 37 seconds East a distance of 5,389.04 feet to a point having the Coordinates X = 1,744,555.42 feet and Y = 487,892.09 feet; thence North 88 degrees 30 minutes 34 seconds West a distance of 4,429.64 feet to a point having the Coordinates X = 1,740,127.28 feet and Y = 488,007.32 feet; thence North 00 degrees 02 minutes 37 seconds West a distance of 9,570.01 feet to the point of beginning, containing approximately **16 acres**, all as more particularly outlined on a plat on file in the Office of Mineral Resources, Department of Natural Resources. All bearings, distances and coordinates are based on Louisiana Coordinate System of 1927, (North or South Zone), where applicable.

NOTE: The above description of the Tract nominated for the purpose of acquiring a mineral lease or a geophysical agreement has been provided and corrected, where required, exclusively by the nominating party. Any mineral lease or geophysical agreement selected from this Tract and awarded by the Louisiana State Mineral and Energy Board shall be without warranty of any kind, either express, implied or statutory including, but not limited to, title or the implied warranties of merchantability and fitness for a particular purpose.

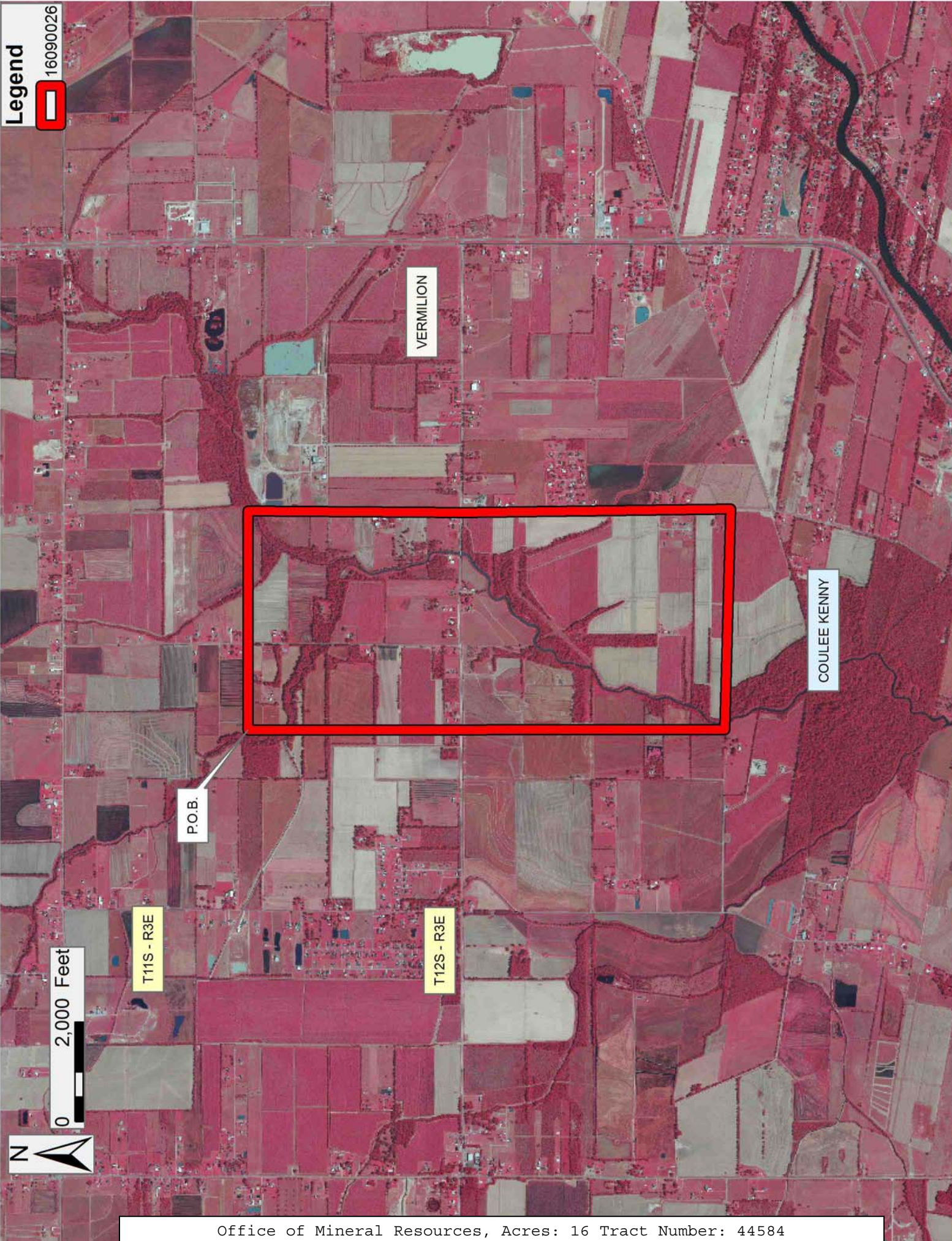
An error or omission in the nominating party's Tract description may require that a State mineral lease or geophysical agreement be modified, canceled or abrogated due to the existence of conflicting leases, operating agreements, private claims or other future obligations or conditions within the Tract described. In such case, however, the Louisiana State Mineral and Energy Board shall not be obligated to refund any consideration paid by the Lessee prior to such modification, cancellation or abrogation including, but not limited to, bonuses, rentals and royalties.

Applicant: PATRICK L. DONOHUE PETROLEUM PROPERTIES, INC.

| Bidder | Cash Payment | Price/Acre | Rental | Oil | Gas | Other |
|--------|--------------|------------|--------|-----|-----|-------|
| | | | | | | |
| | | | | | | |
| | | | | | | |
| | | | | | | |

Legend

16090026



VERMILION

COULLEE KENNY

P.O.B.

T11S - R3E

T12S - R3E

0 2,000 Feet



TRACT 44585 - Vermilion Parish, Louisiana

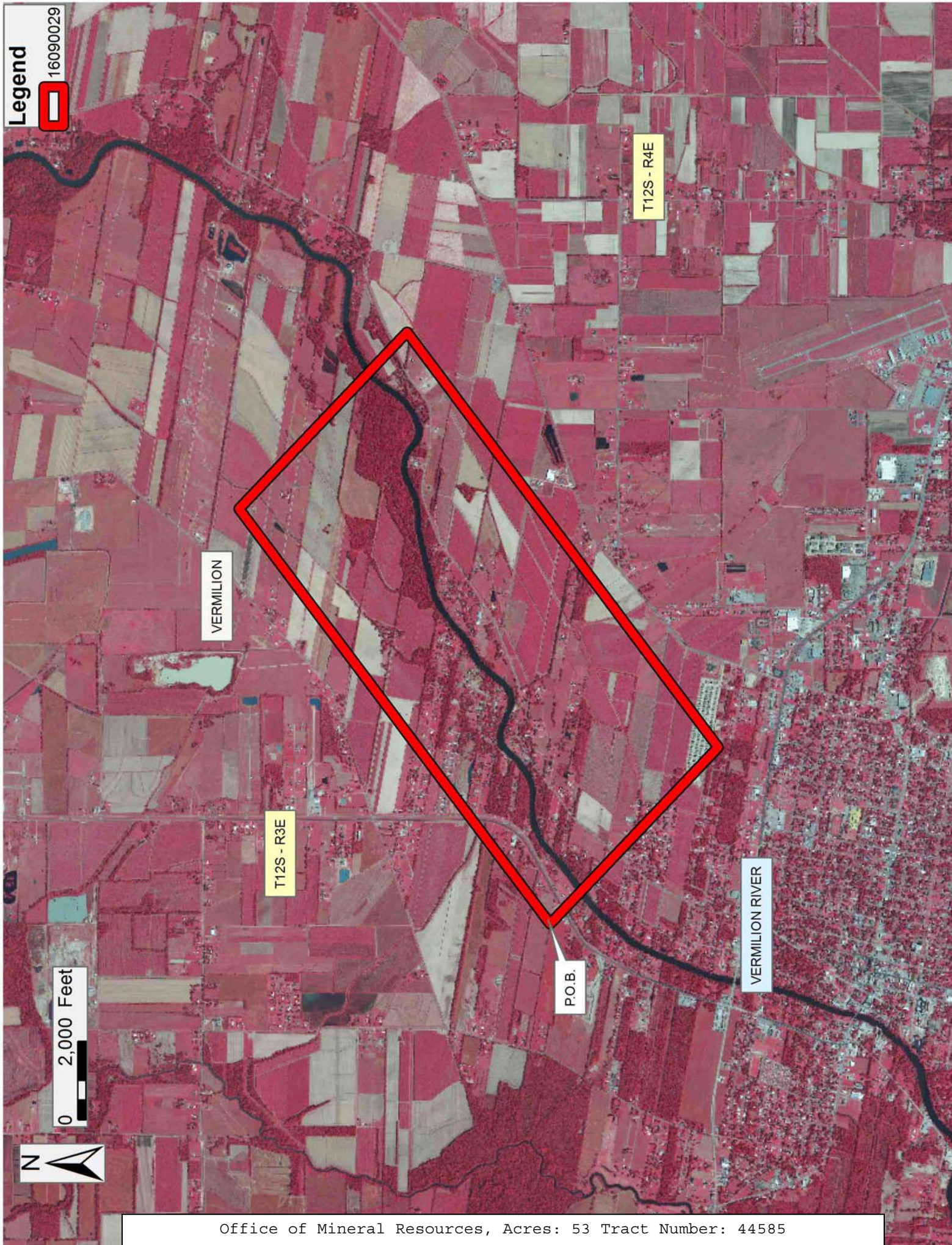
All of the lands now or formerly constituting the beds and bottoms of all water bodies of every nature and description as to which title is vested in the State of Louisiana, together with all islands arising therein and other lands formed by accretion or by reliction, where allowed by law, excepting tax adjudicated lands, and not presently under mineral lease on September 14, 2016, situated in Vermilion Parish, Louisiana, and more particularly described as follows: Beginning at a point having Coordinates of X = 1,747,264.49 and Y = 484,329.15; thence North 53 degrees 09 minutes 28 seconds East a distance of 13,268.20 feet to a point having Coordinates of X = 1,757,882.88 and Y = 492,284.96; thence South 46 degrees 21 minutes 32 seconds East 6,237.85 feet to a point having the Coordinates X = 1,762,397.08 and Y = 487,979.98; thence South 53 degrees 09 minutes 27 seconds West 13,268.21 feet to a point having the Coordinates X = 1,751,778.71 and Y = 480,024.14; thence North 46 degrees 21 minutes 32 seconds West 6,237.89 feet to the point of beginning, containing approximately **53 acres**, all as more particularly outlined on a plat on file in the Office of Mineral Resources, Department of Natural Resources. All bearings, distances and coordinates are based on Louisiana Coordinate System of 1927, (North or South Zone), where applicable.

NOTE: The above description of the Tract nominated for the purpose of acquiring a mineral lease or a geophysical agreement has been provided and corrected, where required, exclusively by the nominating party. Any mineral lease or geophysical agreement selected from this Tract and awarded by the Louisiana State Mineral and Energy Board shall be without warranty of any kind, either express, implied or statutory including, but not limited to, title or the implied warranties of merchantability and fitness for a particular purpose.

An error or omission in the nominating party's Tract description may require that a State mineral lease or geophysical agreement be modified, canceled or abrogated due to the existence of conflicting leases, operating agreements, private claims or other future obligations or conditions within the Tract described. In such case, however, the Louisiana State Mineral and Energy Board shall not be obligated to refund any consideration paid by the Lessee prior to such modification, cancellation or abrogation including, but not limited to, bonuses, rentals and royalties.

Applicant: PATRICK L. DONOHUE PETROLEUM PROPERTIES, INC.

| Bidder | Cash Payment | Price/Acre | Rental | Oil | Gas | Other |
|--------|--------------|------------|--------|-----|-----|-------|
| | | | | | | |
| | | | | | | |
| | | | | | | |
| | | | | | | |



Legend

16090029

VERMILION

T12S - R3E

T12S - R4E

P.O.B.

VERMILION RIVER

0 2,000 Feet



TRACT 44586 - Vermilion Parish, Louisiana

All of the lands now or formerly constituting the beds and bottoms of all water bodies of every nature and description as to which title is vested in the State of Louisiana, together with all islands arising therein and other lands formed by accretion or by reliction, where allowed by law, excepting tax adjudicated lands, and not presently under mineral lease on September 14, 2016, situated in Vermilion Parish, Louisiana, and more particularly described as follows: Beginning at a point having Coordinates of X = 1,734,792.17 and Y = 488,146.15; thence South 88 degrees 30 minutes 34 seconds East 7,017.58 feet to a point having Coordinates of X = 1,741,807.38 and Y = 487,963.60; thence South 00 degrees 00 minutes 01 seconds East 2,240.55 feet to a point on the boundary of State Lease 20179 having the Coordinates X = 1,741,807.38 and Y = 485,723.05; thence Southwesterly along a curve to the left having a chord bearing of South 59 degrees 16 minutes 42 seconds West a chord distance of 129.30 feet, a radius of 819.09 feet, a delta angle of 09 degrees 03 minutes 15 seconds, and an arc distance of 129.44 feet to a point on the boundary of State Lease 20179 having the Coordinates X = 1,741,696.24 and Y = 485,657.00; thence Southwesterly along a curve to the left having a chord bearing of South 52 degrees 18 minutes 37 seconds West a chord distance of 1,215.91 feet, a radius of 13,256.54 feet, a delta angle of 05 degrees 15 minutes 26 seconds, and an arc distance of 1,216.34 feet to a point on the boundary of State Lease 20180 having the Coordinates X = 1,740,734.04 and Y = 484,913.61; thence Southwesterly along a curve to the right having a chord bearing of South 53 degrees 02 minutes 29 seconds West a chord distance of 1,066.45 feet, a radius of 3,013.86 feet, a delta angle of 20 degrees 22 minutes 53 seconds, and an arc distance of 1,072.09 feet to a point on the boundary of State Lease 20180 having the Coordinates X = 1,739,881.87 and Y = 484,272.42; thence South 949.66 feet to a point on the boundary of State Lease 20180 having the Coordinates X = 1,739,881.87 and Y = 483,322.76; thence Northeasterly along a curve to the left having a chord bearing of North 41 degrees 33 minutes 40 seconds East a chord distance of 923.62 feet, a radius of 2,034.99 feet, a delta angle of 26 degrees 14 minutes 00 seconds, and an arc distance of 931.74 feet to a point on the boundary of State Lease 20180 having the Coordinates X = 1,740,494.62 and Y = 484,013.85; thence Northeasterly along a curve to the right having a chord bearing of North 38 degrees 01 minutes 03 seconds East a chord distance of 860.99 feet, a radius of 3,251.57 feet, a delta angle of 15 degrees 12 minutes 58 seconds, and an arc distance of 863.53 feet to a point on the boundary of State Lease 20180 having the Coordinates X = 1,741,024.90 and Y = 484,692.16; thence Northeasterly along a curve to the right having a chord bearing of North 50 degrees 00 minutes 04 seconds East a chord distance of 260.32 feet, a radius of 35,692.84 feet, a delta angle of 00 degrees 25 minutes 04 seconds, and an arc distance of 260.32 feet to a point on the boundary of State Lease 20180 having the Coordinates X = 1,741,224.32 and Y = 484,859.49; thence Northeasterly along a curve to the left having a chord bearing of North 45 degrees 16 minutes 58 seconds East a chord distance of 706.50 feet, a radius of 4,563.17 feet, a delta angle of 08 degrees 52 minutes 47

seconds, and an arc distance of 707.21 feet to a point on the boundary of State Lease 20179 having the Coordinates X = 1,7417,26.35 and Y = 485,356.59; thence Northeasterly along a curve to the left having a chord bearing of North 36 degrees 50 minutes 20 seconds East a chord distance of 135.16 feet, a radius of 2,409.25 feet, a delta angle of 03 degrees 12 minutes 53 seconds, and an arc distance of 135.18 feet to a point on the boundary of State Lease 20179 having the Coordinates X = 1,741,807.39 and Y = 485,464.76; thence South 00 degrees 00 minutes 03 seconds East 1,010.06 feet to a point on the boundary of State Lease 20180 having the Coordinates X = 1,741,807.41 and Y = 484,454.70; thence Southwesterly along a curve to the left having a chord bearing of South 50 degrees 32 minutes 18 seconds West a chord distance of 337.78 feet, a radius of 4,434.08 feet, a delta angle of 04 degrees 21 minutes 56 seconds, and an arc distance of 337.86 on the boundary of State Lease 20180 feet to a point having the Coordinates X = 1,741,546.63 and Y = 484,240.03; thence Southwesterly along a curve to the right having a chord bearing of South 52 degrees 22 minutes 54 seconds West a chord distance of 1,137.04 feet, a radius of 5,726.34 feet, a delta angle of 11 degrees 23 minutes 44 seconds, and an arc distance of 1,138.91 feet to a point on the boundary of State Lease 20180 having the Coordinates X = 1,740,645.98 and Y = 483,545.98; thence Southwesterly along a curve to the left having a chord bearing of South 57 degrees 00 minutes 31 seconds West a chord distance of 869.35 feet, a radius of 3,384.51 feet, a delta angle of 14 degrees 45 minutes 28 seconds, and an arc distance of 871.76 feet to a point on the boundary of State Lease 20180 having the Coordinates X = 1,739,916.81 and Y = 483,072.61; thence South 48 degrees 48 minutes 32 seconds West 46.43 feet to a point on the boundary of State Lease 20180 having the Coordinates X = 1,739,881.87 and Y = 483,042.03; thence South 638.93 feet to a point on the boundary of State Lease 20180 having the Coordinates X = 1,739,881.87 and Y = 482,403.10; thence Northeasterly along a curve to the left having a chord bearing of North 61 degrees 37 minutes 16 seconds East a chord distance of 409.36 feet, a radius of 2,027.61 feet, a delta angle of 11 degrees 35 minutes 15 seconds, and an arc distance of 410.06 feet to a point on the boundary of State Lease 20180 having the Coordinates X = 1,740,242.04 and Y = 482,597.67; thence Northeasterly along a curve to the right having a chord bearing of North 62 degrees 39 minutes 04 seconds East a chord distance of 1,711.16 feet, a radius of 5,859.94 feet, a delta angle of 16 degrees 47 minutes 27 seconds, and an arc distance of 1,717.30 feet to a point on the boundary of State Lease 20180 having the Coordinates X = 1,741,761.93 and Y = 483,383.79; thence North 65 degrees 08 minutes 09 seconds East 50.13 feet to a point on the boundary of State Lease 20180 having the Coordinates X = 1,741,807.42 and Y = 483,404.87; thence South 00 degrees 00 minutes 02 seconds East 3,164.44 feet to a point having the Coordinates X = 1,741,807.45 and Y = 480,240.43; thence South 53 degrees 09 minutes 27 seconds West 4,074.43 feet to a point having the Coordinates X = 1,738,546.74 and Y = 477,797.32; thence South 89 degrees 59 minutes 58 seconds West 3,141.23 feet to a point on the boundary of State Lease 21534 having the Coordinates X = 1,735,405.51 and Y = 477,797.29; thence Westerly along a curve to the left having a chord

bearing of South 85 degrees 07 minutes 25 seconds West a chord distance of 615.46 feet, a radius of 1,724.50 feet, a delta angle of 20 degrees 33 minutes 31 seconds, and an arc distance of 618.77 feet to a point on the boundary of State Lease 21534 having the Coordinates X = 1,734,792.28 and Y = 477,744.98; thence North 00 degrees 00 minutes 02 seconds West 10,401.17 feet to the point of beginning, containing approximately **27 acres**, , all as more particularly outlined on a plat on file in the Office of Mineral Resources, Department of Natural Resources. All bearings, distances and coordinates are based on Louisiana Coordinate System of 1927, (North or South Zone), where applicable.

NOTE: The above description of the Tract nominated for the purpose of acquiring a mineral lease or a geophysical agreement has been provided and corrected, where required, exclusively by the nominating party. Any mineral lease or geophysical agreement selected from this Tract and awarded by the Louisiana State Mineral and Energy Board shall be without warranty of any kind, either express, implied or statutory including, but not limited to, title or the implied warranties of merchantability and fitness for a particular purpose.

An error or omission in the nominating party's Tract description may require that a State mineral lease or geophysical agreement be modified, canceled or abrogated due to the existence of conflicting leases, operating agreements, private claims or other future obligations or conditions within the Tract described. In such case, however, the Louisiana State Mineral and Energy Board shall not be obligated to refund any consideration paid by the Lessee prior to such modification, cancellation or abrogation including, but not limited to, bonuses, rentals and royalties.

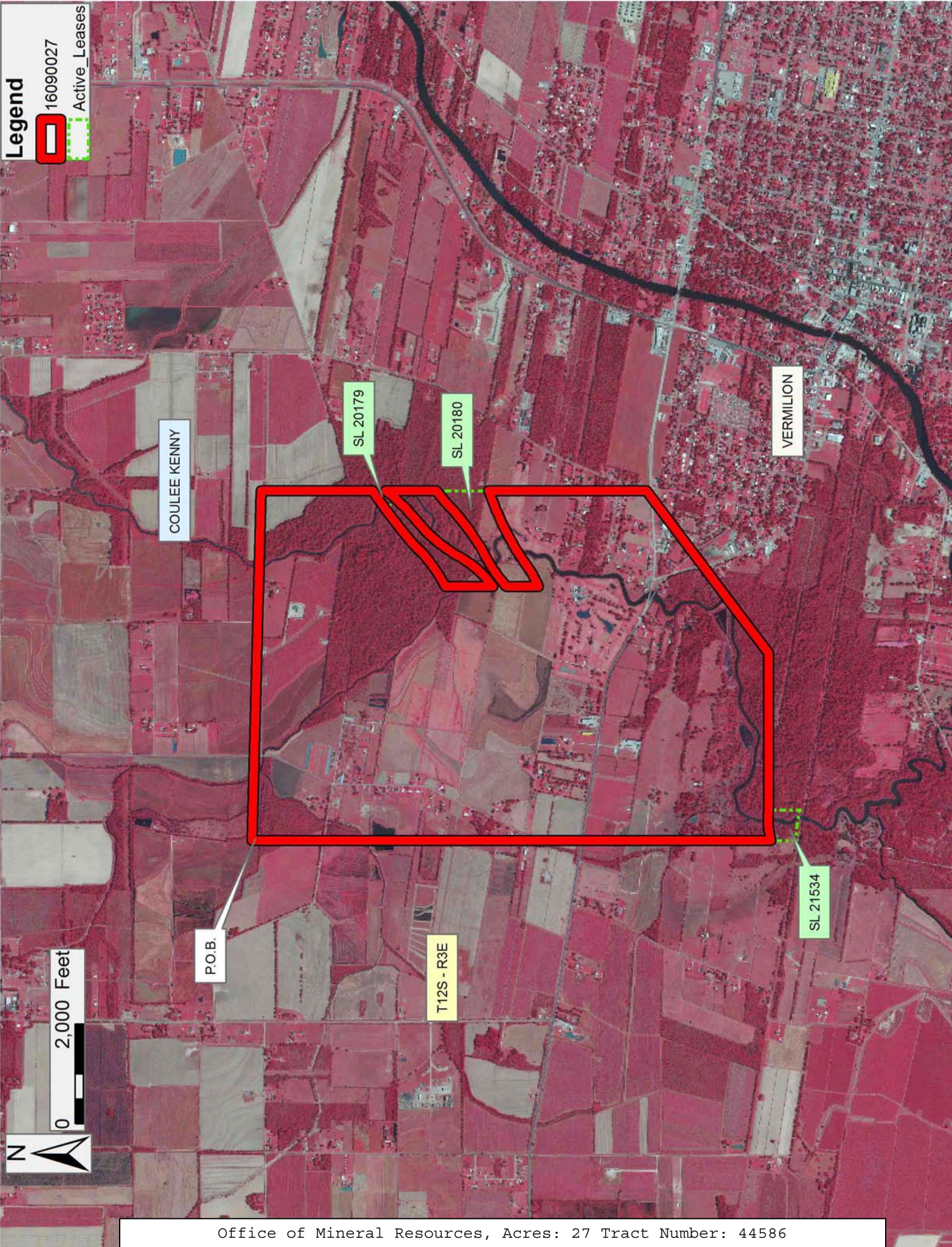
Applicant: PATRICK L. DONOHUE PETROLEUM PROPERTIES, INC.

| Bidder | Cash Payment | Price/Acre | Rental | Oil | Gas | Other |
|--------|--------------|------------|--------|-----|-----|-------|
| | | | | | | |
| | | | | | | |
| | | | | | | |
| | | | | | | |

Legend

16090027

Active_Leases



TRACT 44587 - Vermilion Parish, Louisiana

All of the lands now or formerly constituting the beds and bottoms of all water bodies of every nature and description as to which title is vested in the State of Louisiana, together with all islands arising therein and other lands formed by accretion or by reliction, where allowed by law, excepting tax adjudicated lands, and not presently under mineral lease on September 14, 2016, situated in Vermilion Parish, Louisiana, and more particularly described as follows: Beginning at a point having coordinates of X = 1,747,264.49 and Y = 484,329.15; thence South 46 degrees 21 minutes 32 seconds East a distance of 9,017.86 feet to a point having coordinates of X = 1,753,790.50 and Y = 478,105.58; thence South 48 degrees 49 minutes 21 seconds West a distance of 17,256.96 feet to a point on the boundary of State Lease 21572 having the coordinates X = 1,740,801.67 and Y = 466,743.67; thence North 89 degrees 31 minutes 08 seconds West a distance of 1,594.24 feet to a point on the boundary of State Lease 21572 having the coordinates X = 1,739,207.49 and Y = 466,757.05; thence North 46 degrees 21 minutes 32 seconds West a distance of 9,027.19 feet to a point having the coordinates X = 1,732,674.72 and Y = 472987.07; thence North 49 degrees 20 minutes 44 seconds East a distance of 3,520.43 feet to a point on the boundary of State Lease 21535 having the coordinates X = 1,735,345.50 and Y = 475,280.61; thence Northeasterly along a curve to the right having a chord bearing of North 47 degrees 54 minutes 34 seconds East, a chord distance of 373.42 feet, a radius of 3,051.80 feet, a delta angle of 07 degrees 00 minutes 54 seconds, and an arc distance of 373.65 feet to a point on the boundary of State Lease 21535 having the coordinates X = 1,735,622.60 and Y = 475,530.92; thence North 50 degrees 06 minutes 52 seconds East a distance of 697.35 feet to a point on the boundary of State Lease 21535 having the coordinates X = 1,736,157.70 and Y = 475,978.10; thence Northeasterly along a curve to the left having a chord bearing of North 47 degrees 57 minutes 53 seconds East, a chord distance of 258.34 feet, a radius of 2,305.06 feet, a delta angle of 06 degrees 25 minutes 30 seconds, and an arc distance of 258.48 feet to a point on the boundary of State Lease 21535 having the coordinates X = 1,736,349.58 and Y = 476,151.08; thence North 53 degrees 09 minutes 27 seconds East a distance of 13,638.77 feet to the point of beginning, (This lease includes only waterbottoms claimed and owned by the state and specifically excludes any land which the state may claim or own and to which the mineral rights are vested in the state), containing approximately **119 acres**, all as more particularly outlined on a plat on file in the Office of Mineral Resources, Department of Natural Resources. All bearings, distances and coordinates are based on Louisiana Coordinate System of 1927, (North or South Zone), where applicable.

NOTE: The above description of the Tract nominated for the purpose of acquiring a mineral lease or a geophysical agreement has been provided and corrected, where required, exclusively by the nominating party. Any mineral lease or geophysical agreement selected from this Tract and awarded by the Louisiana State Mineral and Energy Board shall be without warranty of any kind, either express, implied or statutory including, but

not limited to, title or the implied warranties of merchantability and fitness for a particular purpose.

An error or omission in the nominating party's Tract description may require that a State mineral lease or geophysical agreement be modified, canceled or abrogated due to the existence of conflicting leases, operating agreements, private claims or other future obligations or conditions within the Tract described. In such case, however, the Louisiana State Mineral and Energy Board shall not be obligated to refund any consideration paid by the Lessee prior to such modification, cancellation or abrogation including, but not limited to, bonuses, rentals and royalties.

Applicant: PATRICK L. DONOHUE PETROLEUM PROPERTIES, INC.

| Bidder | Cash Payment | Price/Acre | Rental | Oil | Gas | Other |
|--------|--------------|------------|--------|-----|-----|-------|
| | | | | | | |
| | | | | | | |
| | | | | | | |
| | | | | | | |

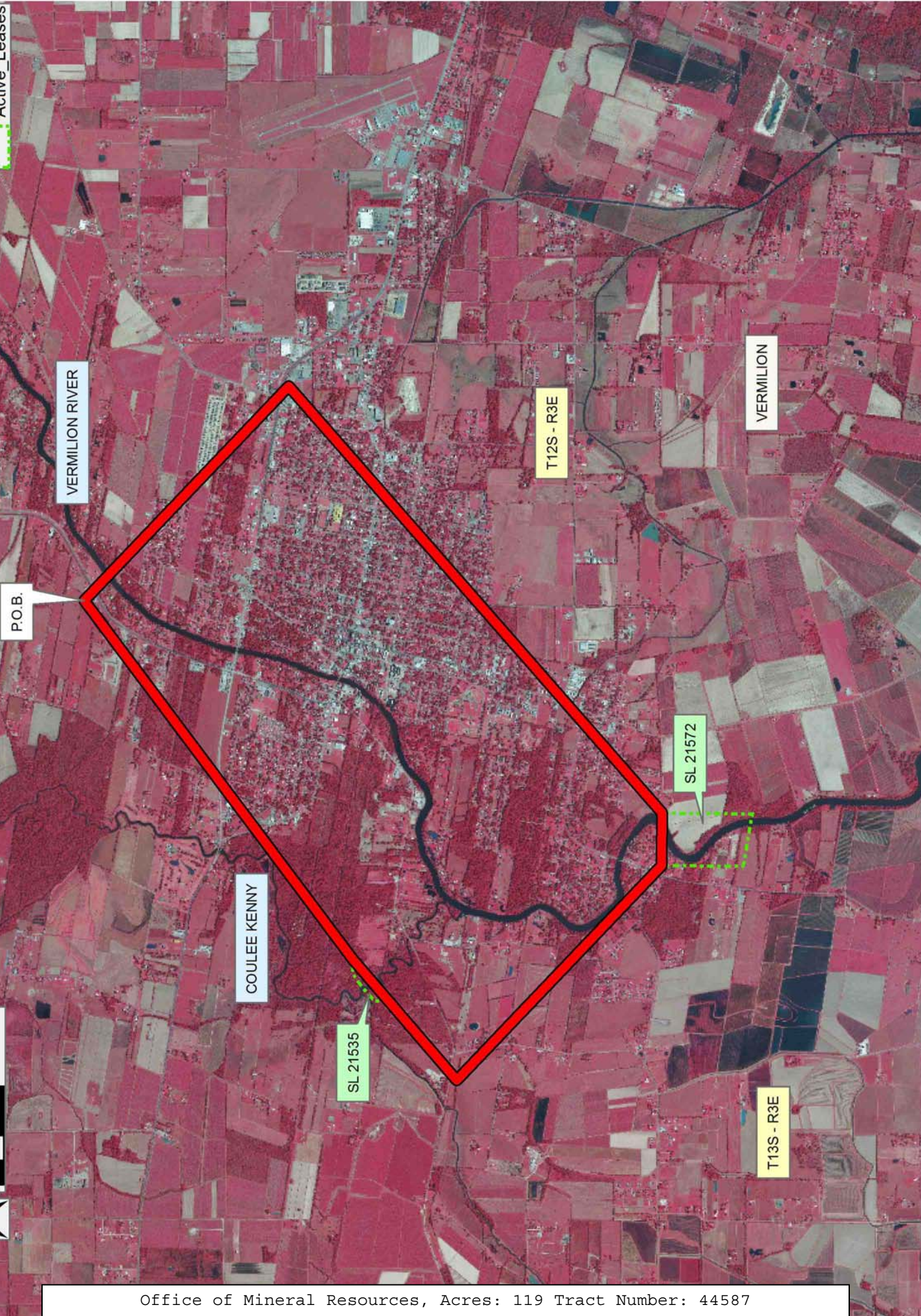
Legend

16090028

Active Leases

0 3,000 Feet

N



TRACT 44588 - Terrebonne Parish, Louisiana

All of the lands now or formerly constituting the beds and bottoms of all water bodies of every nature and description as to which title is vested in the State of Louisiana, together with all islands arising therein and other lands formed by accretion or by reliction, where allowed by law, excepting tax adjudicated lands, and not presently under mineral lease on September 14, 2016, situated in Terrebonne Parish, Louisiana, and more particularly described as follows: Beginning at a point having Coordinates of X = 2,252,129.50 and Y = 218,975.00; thence East 13,855.50 feet to a point having Coordinates of X = 2,265,985.00 and Y = 218,975.00; thence South 6,218.25 feet to a point having Coordinates of X = 2,265,985.00 and Y = 212,756.75; thence West 4,735.90 feet to a point on the Northernmost boundary of State Lease No. 199, as amended, having Coordinates of X = 2,261,239.10 and Y = 212,756.75; thence South 89 degrees 34 minutes 50 seconds West 3,708.02 feet along the boundary of said State Lease No. 199 to a point having Coordinates of X = 2,257,531.18 and Y = 212,729.60; thence West 5,401.68 feet to a point having Coordinates of X = 2,252,129.50 and Y = 212,729.60; thence North 6,246.40 feet to the point of beginning, containing approximately **1,982.41 acres**, all as more particularly outlined on a plat on file in the Office of Mineral Resources, Department of Natural Resources. All bearings, distances and coordinates are based on Louisiana Coordinate System of 1927, (North or South Zone), where applicable.

NOTE: The above description of the Tract nominated for the purpose of acquiring a mineral lease or a geophysical agreement has been provided and corrected, where required, exclusively by the nominating party. Any mineral lease or geophysical agreement selected from this Tract and awarded by the Louisiana State Mineral and Energy Board shall be without warranty of any kind, either express, implied or statutory including, but not limited to, title or the implied warranties of merchantability and fitness for a particular purpose.

An error or omission in the nominating party's Tract description may require that a State mineral lease or geophysical agreement be modified, canceled or abrogated due to the existence of conflicting leases, operating agreements, private claims or other future obligations or conditions within the Tract described. In such case, however, the Louisiana State Mineral and Energy Board shall not be obligated to refund any consideration paid by the Lessee prior to such modification, cancellation or abrogation including, but not limited to, bonuses, rentals and royalties.

NOTE: The State of Louisiana does hereby reserve, and this lease shall be subject to, the imprescriptible right of surface use in the nature of a servitude in favor of the Department of Natural Resources, including its Offices and Commissions, for the sole purpose of implementing, constructing, servicing and maintaining approved coastal zone management and/or restoration projects. Utilization of any and all rights derived

under this lease by the mineral lessee, its agents, successors or assigns, shall not interfere with nor hinder the reasonable surface use by the Department of Natural Resources, its Offices or Commissions, as herein above reserved.

Applicant: OIL LAND SERVICES, INC.

| Bidder | Cash Payment | Price/Acre | Rental | Oil | Gas | Other |
|--------|--------------|------------|--------|-----|-----|-------|
| | | | | | | |
| | | | | | | |
| | | | | | | |
| | | | | | | |

Legend
 16090004
 Active_Leases

TERREBONNE

LAKE BARRE



SL 199

T21S - R19E

P.O.B.



0 2,000 Feet

TRACT 44589 - Terrebonne Parish, Louisiana

All of the lands now or formerly constituting the beds and bottoms of all water bodies of every nature and description as to which title is vested in the State of Louisiana, together with all islands arising therein and other lands formed by accretion or by reliction, where allowed by law, excepting tax adjudicated lands, and not presently under mineral lease on September 14, 2016, situated in Terrebonne Parish, Louisiana, and more particularly described as follows: Beginning at a point having Coordinates of X = 2,265,985.00 and Y = 218,975.00; thence East 13,216.39 feet to a point having Coordinates of X = 2,279,201.39 and Y = 218,975.00; thence South 6,218.25 feet to a point having Coordinates of X = 2,279,201.39 and Y = 212,756.75; thence West 13,216.39 feet to a point having Coordinates of X = 2,265,985.00 and Y = 212,756.75; thence North 6,218.25 feet to the point of beginning, containing approximately **1,886.66 acres**, all as more particularly outlined on a plat on file in the Office of Mineral Resources, Department of Natural Resources. All bearings, distances and coordinates are based on Louisiana Coordinate System of 1927, (North or South Zone), where applicable.

NOTE: The above description of the Tract nominated for the purpose of acquiring a mineral lease or a geophysical agreement has been provided and corrected, where required, exclusively by the nominating party. Any mineral lease or geophysical agreement selected from this Tract and awarded by the Louisiana State Mineral and Energy Board shall be without warranty of any kind, either express, implied or statutory including, but not limited to, title or the implied warranties of merchantability and fitness for a particular purpose.

An error or omission in the nominating party's Tract description may require that a State mineral lease or geophysical agreement be modified, canceled or abrogated due to the existence of conflicting leases, operating agreements, private claims or other future obligations or conditions within the Tract described. In such case, however, the Louisiana State Mineral and Energy Board shall not be obligated to refund any consideration paid by the Lessee prior to such modification, cancellation or abrogation including, but not limited to, bonuses, rentals and royalties.

NOTE: The State of Louisiana does hereby reserve, and this lease shall be subject to, the imprescriptible right of surface use in the nature of a servitude in favor of the Department of Natural Resources, including its Offices and Commissions, for the sole purpose of implementing, constructing, servicing and maintaining approved coastal zone management and/or restoration projects. Utilization of any and all rights derived under this lease by the mineral lessee, its agents, successors or assigns, shall not interfere with nor hinder the reasonable surface use by the Department of Natural Resources, its Offices or Commissions, as herein above reserved.

Applicant: OIL LAND SERVICES, INC.

| Bidder | Cash Payment | Price/Acre | Rental | Oil | Gas | Other |
|--------|--------------|------------|--------|-----|-----|-------|
| | | | | | | |
| | | | | | | |
| | | | | | | |
| | | | | | | |



0 2,000 Feet

Legend



16090003

LAKE TAMBOUR

TERREBONNE

P.O.B.



LAKE BARRE

T21S - R19E

TRACT 44590 - Terrebonne Parish, Louisiana

All of the lands now or formerly constituting the beds and bottoms of all water bodies of every nature and description as to which title is vested in the State of Louisiana, together with all islands arising therein and other lands formed by accretion or by reliction, where allowed by law, excepting tax adjudicated lands, and not presently under mineral lease on September 14, 2016, situated in Terrebonne Parish, Louisiana, and more particularly described as follows: Beginning at a point having Coordinates of X = 2,252,129.50 and Y = 212,729.60; thence East 5,401.68 feet to a point on the Northwesternmost boundary of State Lease No. 199, as amended, having Coordinates of X = 2,257,531.18 and Y = 212,729.60; thence along the boundary of said State Lease No. 199 South 00 degrees 25 minutes 10 seconds East 2,453.02 feet to a point having coordinates of X = 2,257,549.14 and Y = 210,276.65; thence North 58 degrees 22 minutes 44 seconds West approximately 212 feet; thence South 19 degrees 31 minutes 30 seconds West approximately 7,680 feet; thence South 58 degrees 22 minutes 44 seconds East approximately 941 feet; thence South 62 degrees 20 minutes 39 seconds East approximately 929 feet; thence South 66 degrees 23 minutes 18 seconds East approximately 922 feet; thence South 70 degrees 28 minutes 30 seconds East approximately 920 feet; thence North 19 degrees 31 minutes 30 seconds East approximately 1595 feet to a point on the Western boundary of State Lease No. 199, as amended, having Coordinates of X = 2,258,670.08 and Y = 203,051.75; thence along the boundary of said State Lease No. 199 South 00 degrees 25 minutes 10 seconds East 2,885.00 feet to a point having coordinates of X = 2,258,691.20 and Y = 200,166.83; thence West 6,561.70 feet to a point having coordinates of X = 2,252,129.50 and Y = 200,166.83; thence North 12,562.77 feet to the point of beginning, containing approximately **1,318 acres**, all as more particularly outlined on a plat on file in the Office of Mineral Resources, Department of Natural Resources. All bearings, distances and coordinates are based on Louisiana Coordinate System of 1927, (North or South Zone), where applicable.

NOTE: The above description of the Tract nominated for the purpose of acquiring a mineral lease or a geophysical agreement has been provided and corrected, where required, exclusively by the nominating party. Any mineral lease or geophysical agreement selected from this Tract and awarded by the Louisiana State Mineral and Energy Board shall be without warranty of any kind, either express, implied or statutory including, but not limited to, title or the implied warranties of merchantability and fitness for a particular purpose.

An error or omission in the nominating party's Tract description may require that a State mineral lease or geophysical agreement be modified, canceled or abrogated due to the existence of conflicting leases, operating agreements, private claims or other future obligations or conditions within the Tract described. In such case, however, the Louisiana State Mineral and Energy Board shall not be obligated to refund any consideration paid by the Lessee prior to such modification,

cancellation or abrogation including, but not limited to, bonuses, rentals and royalties.


NOTE: The State of Louisiana does hereby reserve, and this lease shall be subject to, the imprescriptible right of surface use in the nature of a servitude in favor of the Department of Natural Resources, including its Offices and Commissions, for the sole purpose of implementing, constructing, servicing and maintaining approved coastal zone management and/or restoration projects. Utilization of any and all rights derived under this lease by the mineral lessee, its agents, successors or assigns, shall not interfere with nor hinder the reasonable surface use by the Department of Natural Resources, its Offices or Commissions, as herein above reserved.


Applicant: OIL LAND SERVICES, INC.

| Bidder | Cash Payment | Price/Acre | Rental | Oil | Gas | Other |
|--------|--------------|------------|--------|-----|-----|-------|
| | | | | | | |
| | | | | | | |
| | | | | | | |
| | | | | | | |

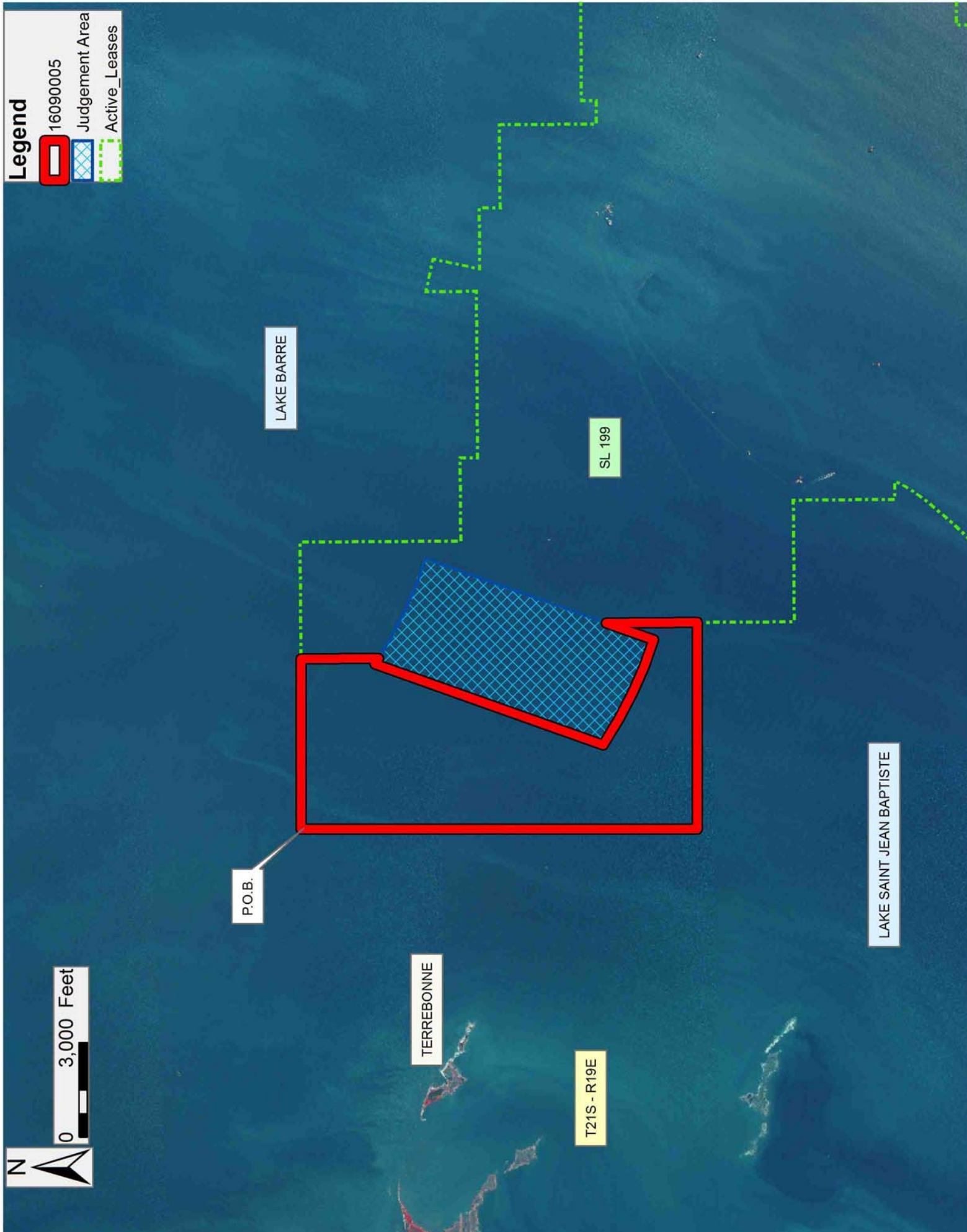
Legend

-  16090005
-  Judgement Area
-  Active_Leases





0 3,000 Feet



TRACT 44591 - Terrebonne Parish, Louisiana

All of the lands now or formerly constituting the beds and bottoms of all water bodies of every nature and description as to which title is vested in the State of Louisiana, together with all islands arising therein and other lands formed by accretion or by reliction, where allowed by law, excepting tax adjudicated lands, and not presently under mineral lease on September 14, 2016, situated in Terrebonne Parish, Louisiana, and more particularly described as follows: Beginning at a point on the Northernmost boundary of State Lease No. 199, as amended, having Coordinates of X = 2,261,239.10 and Y = 212,756.75; thence East 17,962.29 feet to a point having Coordinates of X = 2,279,201.39 and Y = 212,756.75; thence South 5,583.31 feet to a point on the Northeast boundary of State Lease No. 20946, as amended, having Coordinates of X = 2,279,201.39 and Y = 207,173.44; thence along the boundary of said State Lease No. 20946 the following courses and distances: North 60 degrees 01 minutes 31 seconds West 420.00 feet to a corner having Coordinates of X = 2,278,837.57 and Y = 207,383.28, South 29 degrees 58 minutes 29 seconds West 3,555.55 feet to a corner having Coordinates of X = 2,277,061.16 and Y = 204,303.30, and South 34 degrees 01 minutes 36 seconds East 550.51 feet to a point on the Southern boundary of said State Lease No. 20946, being also on the North boundary of State Lease No. 199, as amended, having Coordinates of X = 2,277,369.21 and Y = 203,847.05; thence along the boundary of said State Lease No. 199 the following courses and distances: South 89 degrees 34 minutes 50 seconds West 2,121.97 feet to a corner having Coordinates of X = 2,275,247.30 and Y = 203,831.52, South 00 degrees 25 minutes 10 seconds East 466.50 feet to a corner having Coordinates of X = 2,275,250.72 and Y = 203,365.03, South 89 degrees 34 minutes 50 seconds West 742.48 feet to a corner having Coordinates of X = 2,274,508.25 and Y = 203,359.60, North 00 degrees 25 minutes 10 seconds West 3,073.24 feet to a corner having Coordinates of X = 2,274,485.75 and Y = 206,432.75, South 89 degrees 34 minutes 50 seconds West 2,634.46 feet to a corner having Coordinates of X = 2,271,851.36 and Y = 206,413.47, North 00 degrees 25 minutes 11 seconds West 660.00 feet to a corner having Coordinates of X = 2,271,846.53 and Y = 207,073.45, South 89 degrees 34 minutes 50 seconds West 1,942.29 feet to a corner having Coordinates of X = 2,269,904.29 and Y = 207,059.23, North 11 degrees 51 minutes 43 seconds East 1,524.58 feet to a corner having Coordinates of X = 2,270,217.67 and Y = 208,551.26, North 78 degrees 08 minutes 17 seconds West 1,051.61 feet to a corner having Coordinates of X = 2,269,188.52 and Y = 208,767.42, and South 00 degrees 25 minutes 09 seconds East 523.00 feet to a point on the Northeast boundary of State Lease No. 21148, as amended, being also on the boundary of said State Lease No. 199 having Coordinates of X = 2,269,192.35 and Y = 208,244.44; thence West 2,726.33 feet along the North boundary of said State Lease No. 21148 to its Northwest corner having Coordinates of X = 2,266,466.02 and Y = 208,244.44; thence South 44 degrees 39 minutes 54 seconds East 1,535.52 feet to a point on the North boundary of said State Lease No. 199 having Coordinates of X = 2,267,545.43 and Y = 207,152.33; thence along the boundary of said State Lease No. 199 the following courses and distances: South 89 degrees 34 minutes 50 seconds West 3,625.12 feet to a corner

having Coordinates of X = 2,263,920.40 and Y = 207,125.79, North 00 degrees 25 minutes 10 seconds West 553.43 feet to a corner having Coordinates of X = 2,263,916.34 and Y = 207,679.21, South 89 degrees 34 minutes 50 seconds West 2,640.00 feet to a corner having Coordinates of X = 2,261,276.41 and Y = 207,659.89, and North 00 degrees 25 minutes 10 seconds West 5,097.00 feet to the point of beginning, containing approximately **2,497.95 acres**, all as more particularly outlined on a plat on file in the Office of Mineral Resources, Department of Natural Resources. All bearings, distances and coordinates are based on Louisiana Coordinate System of 1927, (North or South Zone), where applicable.

NOTE: The above description of the Tract nominated for the purpose of acquiring a mineral lease or a geophysical agreement has been provided and corrected, where required, exclusively by the nominating party. Any mineral lease or geophysical agreement selected from this Tract and awarded by the Louisiana State Mineral and Energy Board shall be without warranty of any kind, either express, implied or statutory including, but not limited to, title or the implied warranties of merchantability and fitness for a particular purpose.

An error or omission in the nominating party's Tract description may require that a State mineral lease or geophysical agreement be modified, canceled or abrogated due to the existence of conflicting leases, operating agreements, private claims or other future obligations or conditions within the Tract described. In such case, however, the Louisiana State Mineral and Energy Board shall not be obligated to refund any consideration paid by the Lessee prior to such modification, cancellation or abrogation including, but not limited to, bonuses, rentals and royalties.

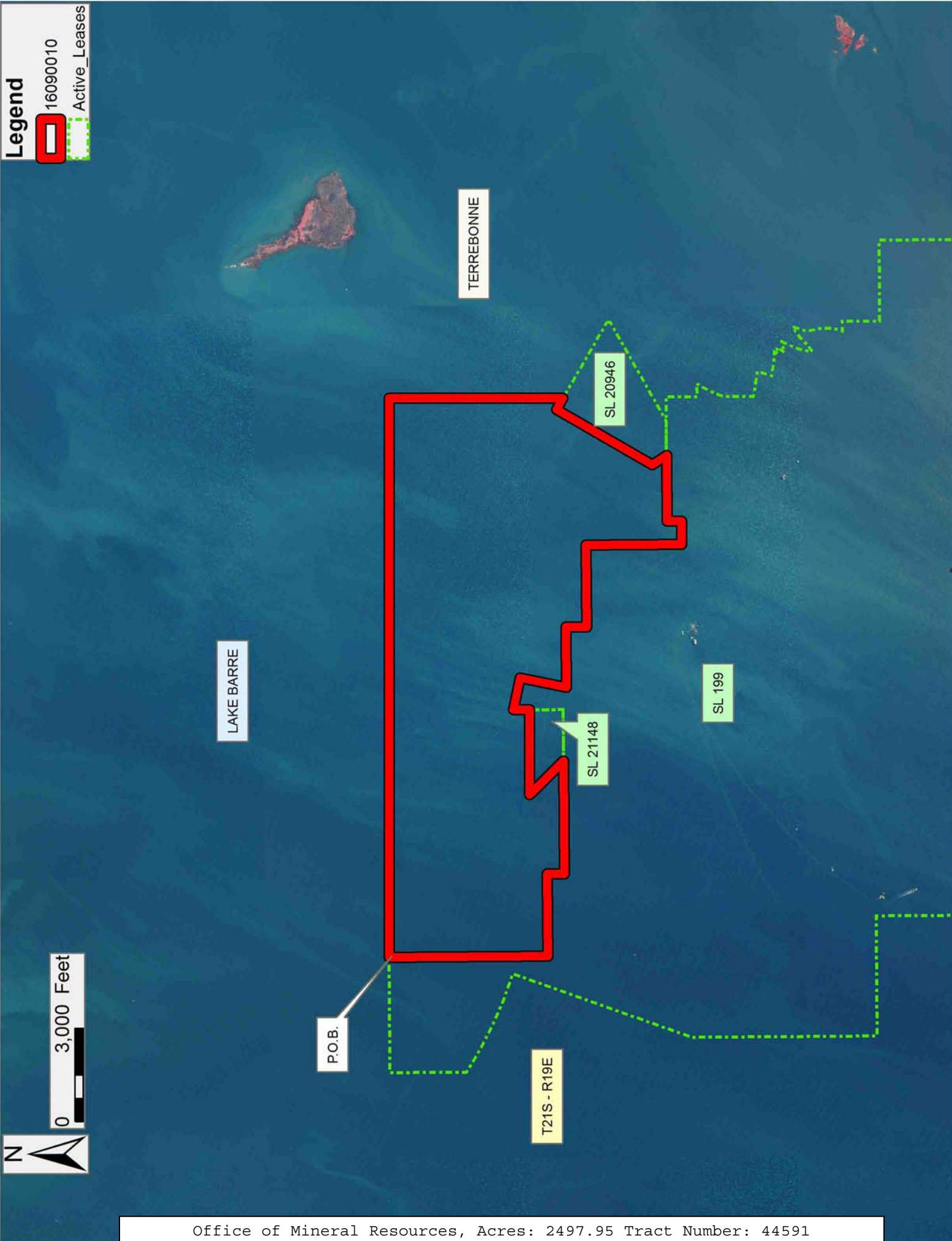
NOTE: The State of Louisiana does hereby reserve, and this lease shall be subject to, the imprescriptible right of surface use in the nature of a servitude in favor of the Department of Natural Resources, including its Offices and Commissions, for the sole purpose of implementing, constructing, servicing and maintaining approved coastal zone management and/or restoration projects. Utilization of any and all rights derived under this lease by the mineral lessee, its agents, successors or assigns, shall not interfere with nor hinder the reasonable surface use by the Department of Natural Resources, its Offices or Commissions, as herein above reserved.

Applicant: OIL LAND SERVICES, INC.

| Bidder | Cash Payment | Price/Acre | Rental | Oil | Gas | Other |
|--------|--------------|------------|--------|-----|-----|-------|
| | | | | | | |
| | | | | | | |
| | | | | | | |
| | | | | | | |

Legend
16090010
Active_Leases

0 3,000 Feet



TRACT 44592 - Portion of Blocks 115, and 116, South Timbalier Area, Revised, Terrebonne Parish, Louisiana

All of the lands now or formerly constituting the beds and bottoms of all water bodies of every nature and description as to which title is vested in the State of Louisiana, together with all islands arising therein and other lands formed by accretion or by reliction, where allowed by law, excepting tax adjudicated lands, and not presently under mineral lease on September 14, 2016, situated in Terrebonne Parish, Louisiana, and more particularly described as follows: Beginning at a point having Coordinates of X = 2,252,129.50 and Y = 200,166.83; thence East 6,561.70 feet to a point on the Western boundary of State Lease No. 199, as amended, having Coordinates of X = 2,258,691.20 and Y = 200,166.83; thence along the Western boundary of said State Lease No. 199 the following courses and distances: South 00 degrees 25 minutes 10 seconds East 3,086.07 feet to a corner having Coordinates of X = 2,258,713.79 and Y = 197,080.84, North 89 degrees 34 minutes 50 seconds East 3,858.18 feet to a corner having Coordinates of X = 2,262,571.87 and Y = 197,109.09, South 00 degrees 25 minutes 10 seconds East 3,225.07 feet to a corner having Coordinates of X = 2,262,595.48 and Y = 193,884.10, North 89 degrees 34 minutes 50 seconds East 568.42 feet to a corner having Coordinates of X = 2,263,163.88 and Y = 193,888.27, South 26 degrees 34 minutes 50 seconds West 102.72 feet to a point having Coordinates of X = 2,263,117.92 and Y = 193,796.40, South 27 degrees 34 minutes 50 seconds West 243.50 feet to a point having Coordinates of X = 2,263,005.18 and Y = 193,580.57, South 30 degrees 19 minutes 50 seconds West 168.72 feet to a point having Coordinates of X = 2,262,919.98 and Y = 193,434.95, South 32 degrees 19 minutes 50 seconds West 178.35 feet to a point having Coordinates 2,262,824.60 and Y = 193,284.24, South 34 degrees 34 minutes 50 seconds West 219.74 feet to a point having Coordinates of X = 2,262,699.88 and Y = 193,103.33, South 37 degrees 04 minutes 50 seconds West 195.37 feet to a point having Coordinates of X = 2,262,582.08 and Y = 192,947.46, South 39 degrees 34 minutes 50 seconds West 300.24 feet to a point having Coordinates of X = 2,262,390.78 and Y = 192,716.06, South 39 degrees 51 minutes 50 seconds West 589.89 feet to a point having Coordinates of X = 2,262,012.68 and Y = 192,263.28, South 41 degrees 51 minutes 36 seconds West 592.49 feet to a point having Coordinates of X = 2,261,617.31 and Y = 191,822.00, South 44 degrees 31 minutes 01 seconds West 1,038.29 feet to a point having Coordinates of X = 2,260,889.34 and Y = 191,081.66, South 46 degrees 17 minutes 50 seconds West 437.57 feet to a corner having Coordinates of X = 2,260,573.01 and Y = 190,779.33, South 68 degrees 25 minutes 10 seconds East 800.89 feet to a point having Coordinates of X = 2,261,317.77 and Y = 190,484.78, South 71 degrees 40 minutes 10 seconds East 933.24 feet to a point having Coordinates of X = 2,262,203.65 and Y = 190,191.25, South 73 degrees 32 minutes 10 seconds East 516.50 feet to a point having Coordinates of X = 2,262,698.97 and Y = 190,044.88, South 75 degrees 55 minutes 10 seconds East 243.74 feet to a point having Coordinates of X = 2,262,935.39 and Y = 189,985.58, and South 20 degrees 46 minutes 08 seconds West 938.43 feet to a point having Coordinates of X = 2,262,602.62 and Y = 189,108.13; thence West 10,473.12 feet to a point within Block

115, South Timbalier Area, Revised, having Coordinates of X = 2,252,129.50 and Y = 189,108.13; thence North 11,058.70 feet to the point of beginning, containing approximately **2,326.30 acres**, all as more particularly outlined on a plat on file in the Office of Mineral Resources, Department of Natural Resources. All bearings, distances and coordinates are based on Louisiana Coordinate System of 1927, (North or South Zone), where applicable.

NOTE: The above description of the Tract nominated for the purpose of acquiring a mineral lease or a geophysical agreement has been provided and corrected, where required, exclusively by the nominating party. Any mineral lease or geophysical agreement selected from this Tract and awarded by the Louisiana State Mineral and Energy Board shall be without warranty of any kind, either express, implied or statutory including, but not limited to, title or the implied warranties of merchantability and fitness for a particular purpose.

An error or omission in the nominating party's Tract description may require that a State mineral lease or geophysical agreement be modified, canceled or abrogated due to the existence of conflicting leases, operating agreements, private claims or other future obligations or conditions within the Tract described. In such case, however, the Louisiana State Mineral and Energy Board shall not be obligated to refund any consideration paid by the Lessee prior to such modification, cancellation or abrogation including, but not limited to, bonuses, rentals and royalties.

NOTE: The State of Louisiana does hereby reserve, and this lease shall be subject to, the imprescriptible right of surface use in the nature of a servitude in favor of the Department of Natural Resources, including its Offices and Commissions, for the sole purpose of implementing, constructing, servicing and maintaining approved coastal zone management and/or restoration projects. Utilization of any and all rights derived under this lease by the mineral lessee, its agents, successors or assigns, shall not interfere with nor hinder the reasonable surface use by the Department of Natural Resources, its Offices or Commissions, as herein above reserved.

| Bidder | Cash Payment | Price/Acre | Rental | Oil | Gas | Other |
|--------|--------------|------------|--------|-----|-----|-------|
| | | | | | | |
| | | | | | | |
| | | | | | | |
| | | | | | | |

Applicant: OIL LAND SERVICES, INC.

Legend

16090006
Active_Leases

