

**TRACT 44593 - Terrebonne Parish, Louisiana**

All of the lands now or formerly constituting the beds and bottoms of all water bodies of every nature and description as to which title is vested in the State of Louisiana, together with all islands arising therein and other lands formed by accretion or by reliction, where allowed by law, excepting tax adjudicated lands, and not presently under mineral lease on September 14, 2016, situated in Terrebonne Parish, Louisiana, and more particularly described as follows: Beginning at a Point on the Southern boundary of State Lease No. 199, as amended, having Coordinates of X = 2,273,576.38 and Y = 187,004.38; thence along the boundary of said State Lease No. 199 the following courses and distances: North 06 degrees 12 minutes 15 seconds West 1,392.69 feet to a point having Coordinates of X = 2,273,425.87 and Y = 188,388.91, North 11 degrees 26 minutes 05 seconds West 488.46 feet to a corner having Coordinates of X = 2,273,329.03 and Y = 188,867.68, North 89 degrees 34 minutes 50 seconds East 1,285.28 feet to a corner having Coordinates of X = 2,274,614.27 and Y = 188,877.09, South 00 degrees 25 minutes 11 seconds East 1,865.06 feet to a corner having Coordinates of X = 2,274,627.93 and Y = 187,012.08, North 89 degrees 34 minutes 50 seconds East 6,683.19 feet to a corner having Coordinates of X = 2,281,310.94 and Y = 187,061.00, North 00 degrees 25 minutes 10 seconds West 2,955.66 feet to a corner having Coordinates of X = 2,281,289.30 and Y = 190,016.58, South 89 degrees 34 minutes 50 seconds West 2,600.00 feet to a corner having Coordinates of X = 2,278,689.37 and Y = 189,997.55, North 00 degrees 25 minutes 10 seconds West 600.00 feet to a corner having Coordinates of X = 2,278,684.98 and Y = 190,597.53, South 89 degrees 34 minutes 50 seconds West 1,023.22 feet to a corner having Coordinates of X = 2,277,661.79 and Y = 190,590.04, North 00 degrees 25 minutes 10 seconds West 1,349.35 feet to a corner having Coordinates of X = 2,277,651.91 and Y = 191,939.35, North 89 degrees 34 minutes 50 seconds East 2,220.03 feet to a corner having Coordinates of X = 2,279,871.88 and Y = 191,955.60, North 00 degrees 25 minutes 10 seconds West 2,140.16 feet to a corner having Coordinates of X = 2,279,856.21 and Y = 194,095.70, North 89 degrees 34 minutes 50 seconds East 453.49 feet to a corner having Coordinates of X = 2,280,309.69 and Y = 194,099.02, South 00 degrees 25 minutes 10 seconds East 1,111.20 feet to a corner having Coordinates of X = 2,280,317.82 and Y = 192,987.85, and North 89 degrees 34 minutes 50 seconds East 4,000.01 feet to a corner having Coordinates of X = 2,284,317.72 and Y = 193,017.13; thence South approximately 8,466 feet to a point on the boundary of Special Section 16; thence along the boundary of said Special Section 16 the following: Westerly approximately 4,259 feet and Southerly approximately 1,501 feet to a point having a Coordinate of Y = 183,008.13; thence Westerly approximately 6,502 feet to a point having Coordinates of X = 2,273,576.38 and Y = 183,008.13; thence North 3,996.25 feet to the point of beginning, **LESS AND EXCEPT** any right, title, and interest in lands owned by and not under lease from the State of Louisiana, Special Section 16, situated in Section 16, Township 22 South, Range 20 East, Terrebonne Parish, Louisiana, containing approximately **1,501 acres**, all as more particularly outlined on a plat on file in the Office of Mineral Resources, Department of Natural Resources. All

bearings, distances and coordinates are based on Louisiana Coordinate System of 1927, (North or South Zone), where applicable.

NOTE: The above description of the Tract nominated for the purpose of acquiring a mineral lease or a geophysical agreement has been provided and corrected, where required, exclusively by the nominating party. Any mineral lease or geophysical agreement selected from this Tract and awarded by the Louisiana State Mineral and Energy Board shall be without warranty of any kind, either express, implied or statutory including, but not limited to, title or the implied warranties of merchantability and fitness for a particular purpose.

An error or omission in the nominating party's Tract description may require that a State mineral lease or geophysical agreement be modified, canceled or abrogated due to the existence of conflicting leases, operating agreements, private claims or other future obligations or conditions within the Tract described. In such case, however, the Louisiana State Mineral and Energy Board shall not be obligated to refund any consideration paid by the Lessee prior to such modification, cancellation or abrogation including, but not limited to, bonuses, rentals and royalties.

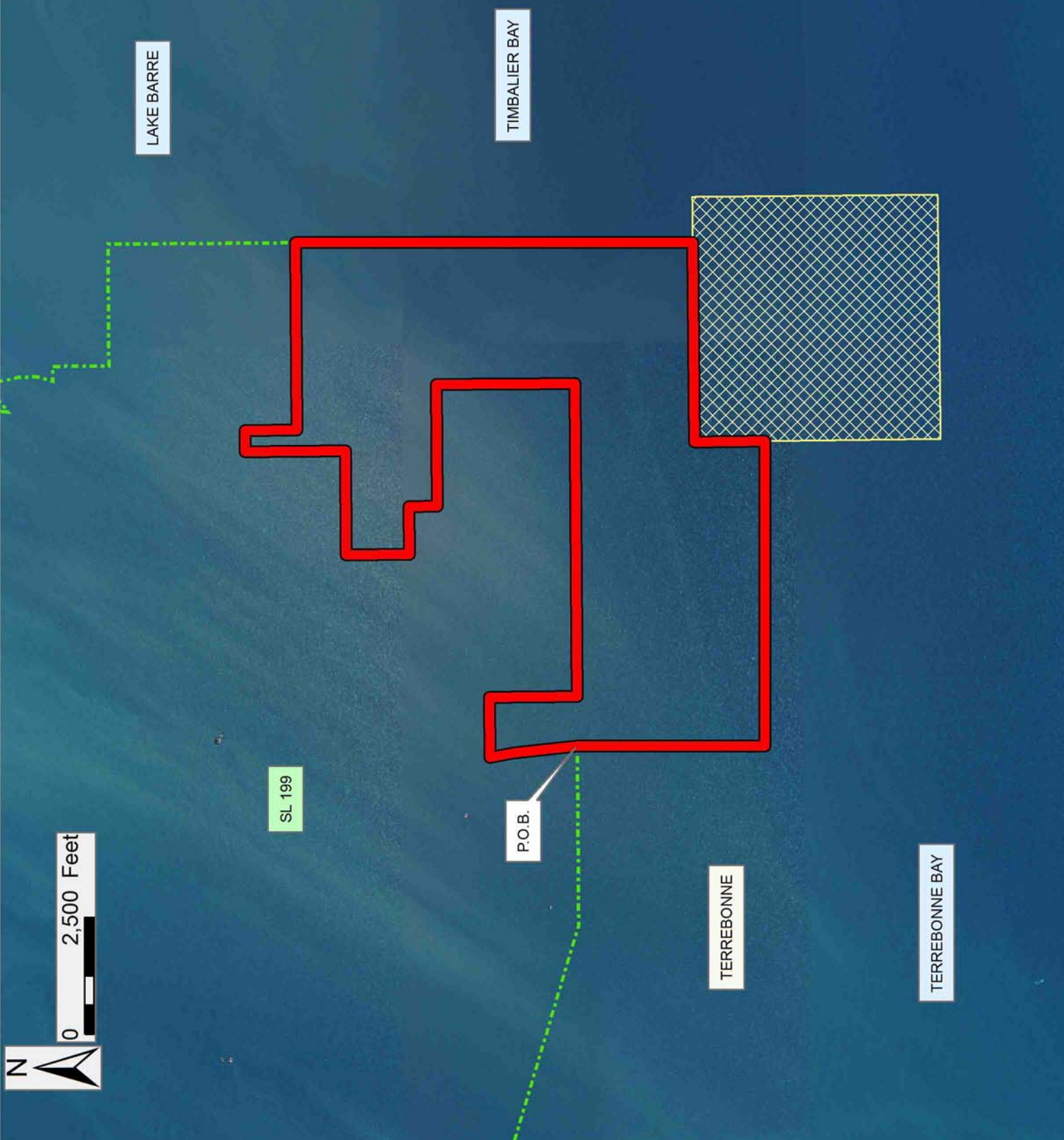
NOTE: The State of Louisiana does hereby reserve, and this lease shall be subject to, the imprescriptible right of surface use in the nature of a servitude in favor of the Department of Natural Resources, including its Offices and Commissions, for the sole purpose of implementing, constructing, servicing and maintaining approved coastal zone management and/or restoration projects. Utilization of any and all rights derived under this lease by the mineral lessee, its agents, successors or assigns, shall not interfere with nor hinder the reasonable surface use by the Department of Natural Resources, its Offices or Commissions, as herein above reserved.

Applicant: OIL LAND SERVICES, INC.

| Bidder | Cash Payment | Price/Acre | Rental | Oil | Gas | Other |
|--------|--------------|------------|--------|-----|-----|-------|
|        |              |            |        |     |     |       |
|        |              |            |        |     |     |       |
|        |              |            |        |     |     |       |
|        |              |            |        |     |     |       |

**Legend**

- 16090009
- Special Section 16
- Active\_Leases



**TRACT 44594 - Portion of Blocks 115, and 116, South Timbalier Area, Revised, Terrebonne Parish, Louisiana**

All of the lands now or formerly constituting the beds and bottoms of all water bodies of every nature and description as to which title is vested in the State of Louisiana, together with all islands arising therein and other lands formed by accretion or by reliction, where allowed by law, excepting tax adjudicated lands, and not presently under mineral lease on September 14, 2016, situated in Terrebonne Parish, Louisiana, and more particularly described as follows: Beginning at a point within Block 115, South Timbalier Area, Revised, having Coordinates of X = 2,252,129.50 and Y = 189,108.13; thence East 9,700.00 feet to a point within Block 116, South Timbalier Area, Revised, having Coordinates of X = 2,261,829.50 and Y = 189,108.13; thence South 6,100.00 feet to a point within said Block 116, South Timbalier Area, Revised, having Coordinates of X = 2,261,829.50 and Y = 183,008.13; thence West 9,700.00 feet to a point within Block 115, South Timbalier Area, Revised, having Coordinates of X = 2,252,129.50 and Y = 183,008.13; thence North 6,100.00 feet to the point of beginning, containing approximately **1,358.36 acres**, all as more particularly outlined on a plat on file in the Office of Mineral Resources, Department of Natural Resources. All bearings, distances and coordinates are based on Louisiana Coordinate System of 1927, (North or South Zone), where applicable.

NOTE: The above description of the Tract nominated for the purpose of acquiring a mineral lease or a geophysical agreement has been provided and corrected, where required, exclusively by the nominating party. Any mineral lease or geophysical agreement selected from this Tract and awarded by the Louisiana State Mineral and Energy Board shall be without warranty of any kind, either express, implied or statutory including, but not limited to, title or the implied warranties of merchantability and fitness for a particular purpose.

An error or omission in the nominating party's Tract description may require that a State mineral lease or geophysical agreement be modified, canceled or abrogated due to the existence of conflicting leases, operating agreements, private claims or other future obligations or conditions within the Tract described. In such case, however, the Louisiana State Mineral and Energy Board shall not be obligated to refund any consideration paid by the Lessee prior to such modification, cancellation or abrogation including, but not limited to, bonuses, rentals and royalties.

NOTE: The State of Louisiana does hereby reserve, and this lease shall be subject to, the imprescriptible right of surface use in the nature of a servitude in favor of the Department of Natural Resources, including its Offices and Commissions, for the sole purpose of implementing, constructing, servicing and maintaining approved coastal zone management and/or restoration projects. Utilization of any and all rights derived under this lease by the mineral lessee, its agents, successors or assigns,

shall not interfere with nor hinder the reasonable surface use by the Department of Natural Resources, its Offices or Commissions, as herein above reserved.

Applicant: OIL LAND SERVICES, INC.

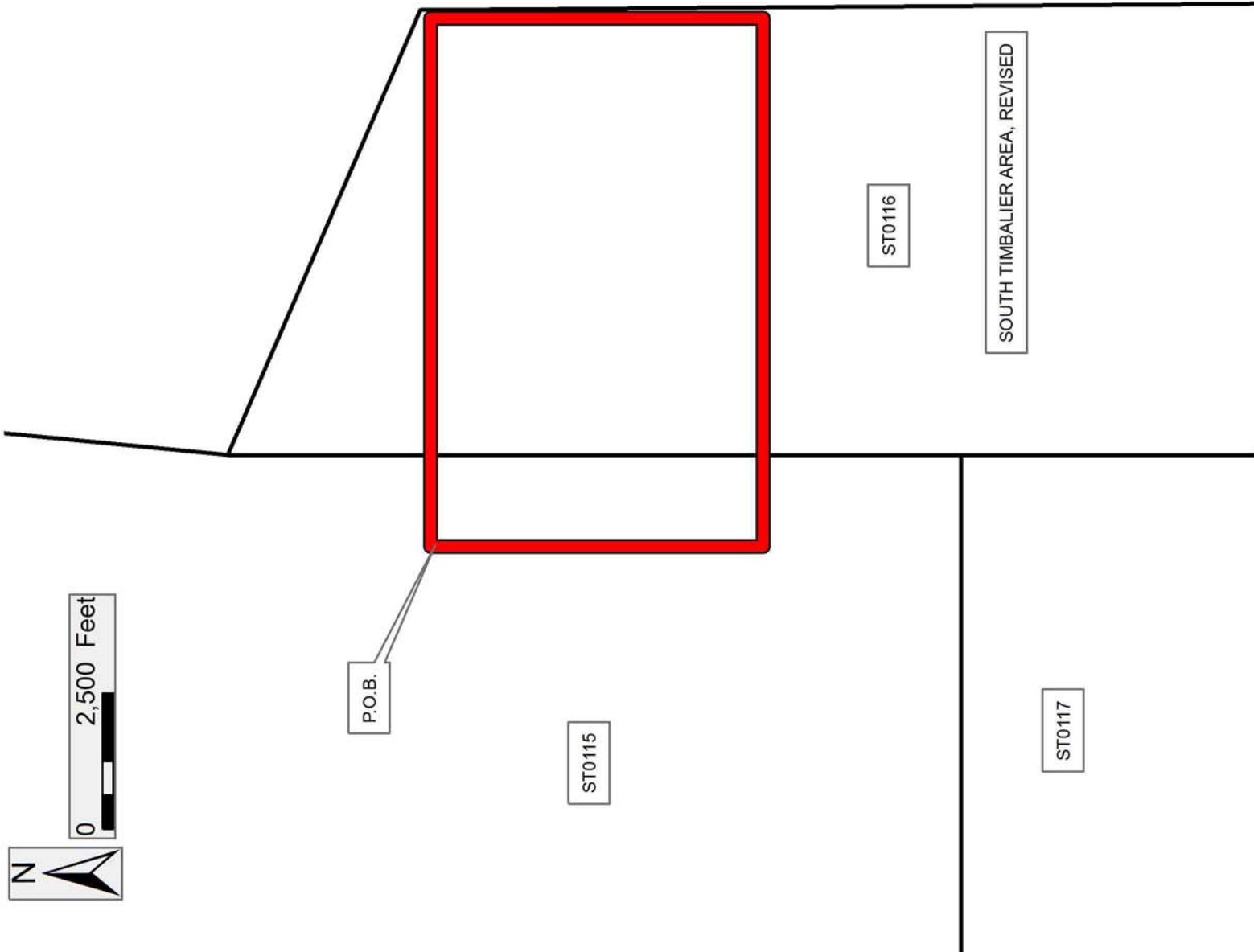
| Bidder | Cash Payment | Price/Acre | Rental | Oil | Gas | Other |
|--------|--------------|------------|--------|-----|-----|-------|
|        |              |            |        |     |     |       |
|        |              |            |        |     |     |       |
|        |              |            |        |     |     |       |
|        |              |            |        |     |     |       |

**Legend**  
 16090007

TERREBONNE

TERREBONNE BAY

  
0 2,500 Feet



**TRACT 44595 - Portion of Block 116, South Timbalier Area, Revised, Terrebonne Parish, Louisiana**

All of the lands now or formerly constituting the beds and bottoms of all water bodies of every nature and description as to which title is vested in the State of Louisiana, together with all islands arising therein and other lands formed by accretion or by reliction, where allowed by law, excepting tax adjudicated lands, and not presently under mineral lease on September 14, 2016, situated in Terrebonne Parish, Louisiana, and more particularly described as follows: Beginning at a point within Block 116, South Timbalier Area, Revised, having Coordinates of X = 2,261,829.50 and Y = 189,108.13; thence East 773.12 feet to a point on the boundary of State Lease No. 199, as amended, having Coordinates of X = 2,262,602.62 and Y = 189,108.13; thence along the boundary of said State Lease No. 199 the following courses and distances: South 73 degrees 25 minutes 10 seconds East 7,470.05 feet to a point having Coordinates of X = 2,269,762.06 and Y = 186,976.45, North 89 degrees 34 minutes 49 seconds East 485.99 feet to a point having Coordinates of X = 2,270,248.04 and Y = 186,980.01, North 89 degrees 34 minutes 50 seconds East 3,328.43 feet to a point having Coordinates of X = 2,273,576.38 and Y = 187,004.38; thence South 3,996.25 feet to a point having Coordinates of X = 2,273,576.38 and Y = 183,008.13; thence West 11,746.88 feet to a point within said Block 116, South Timbalier Area, Revised, having Coordinates of X = 2,261,829.50 and Y = 183,008.13; thence North 6,100.00 feet to the point of beginning, containing approximately **1,284.38 acres**, all as more particularly outlined on a plat on file in the Office of Mineral Resources, Department of Natural Resources. All bearings, distances and coordinates are based on Louisiana Coordinate System of 1927, (North or South Zone), where applicable.

NOTE: The above description of the Tract nominated for the purpose of acquiring a mineral lease or a geophysical agreement has been provided and corrected, where required, exclusively by the nominating party. Any mineral lease or geophysical agreement selected from this Tract and awarded by the Louisiana State Mineral and Energy Board shall be without warranty of any kind, either express, implied or statutory including, but not limited to, title or the implied warranties of merchantability and fitness for a particular purpose.

An error or omission in the nominating party's Tract description may require that a State mineral lease or geophysical agreement be modified, canceled or abrogated due to the existence of conflicting leases, operating agreements, private claims or other future obligations or conditions within the Tract described. In such case, however, the Louisiana State Mineral and Energy Board shall not be obligated to refund any consideration paid by the Lessee prior to such modification, cancellation or abrogation including, but not limited to, bonuses, rentals and royalties.

NOTE: The State of Louisiana does hereby reserve, and this lease shall be subject to, the imprescriptible right of surface use in the nature of a servitude in favor of the Department of Natural Resources, including its Offices and Commissions, for the sole purpose of implementing, constructing, servicing and maintaining approved coastal zone management and/or restoration projects. Utilization of any and all rights derived under this lease by the mineral lessee, its agents, successors or assigns, shall not interfere with nor hinder the reasonable surface use by the Department of Natural Resources, its Offices or Commissions, as herein above reserved.

Applicant: OIL LAND SERVICES, INC.

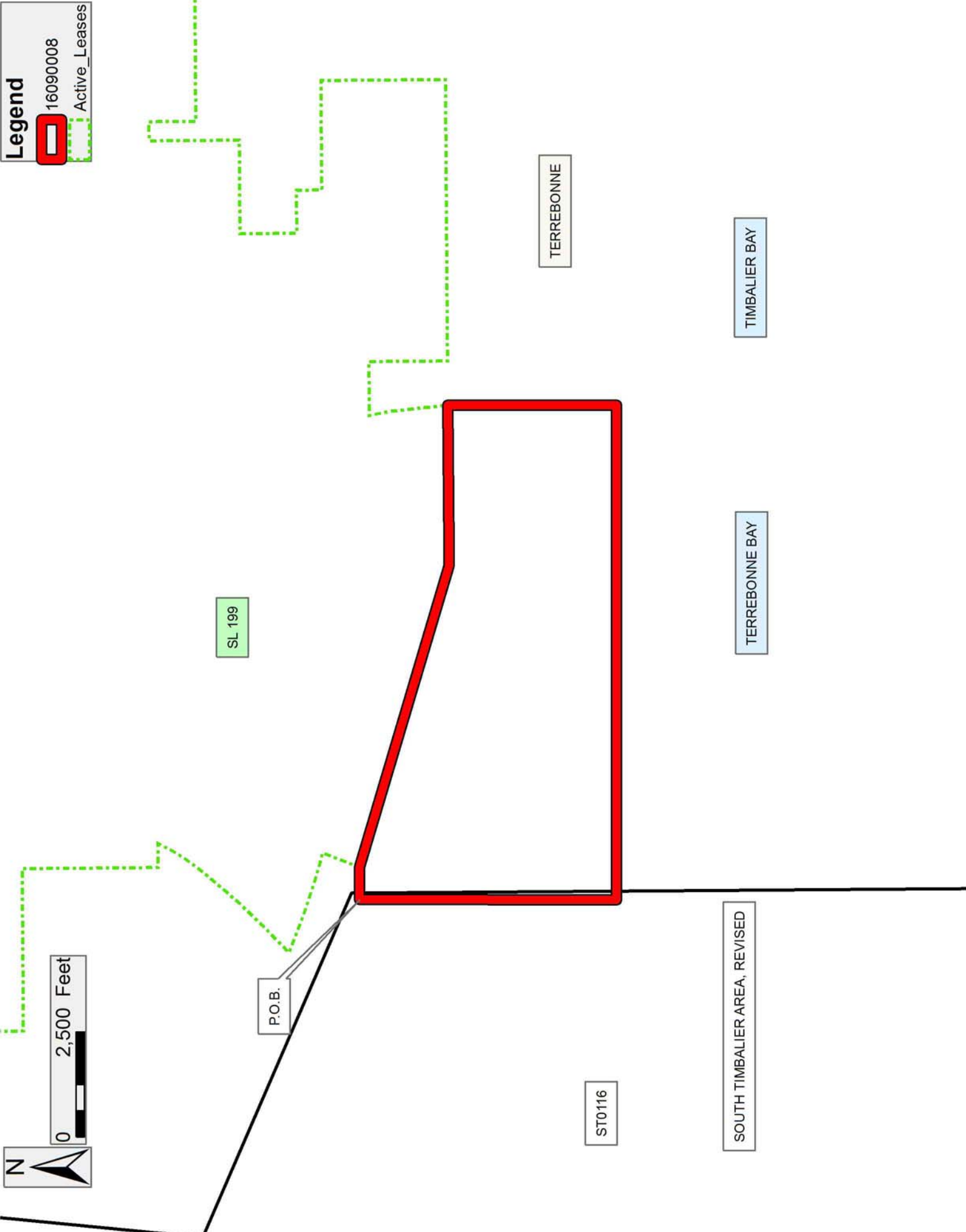
| Bidder | Cash Payment | Price/Acre | Rental | Oil | Gas | Other |
|--------|--------------|------------|--------|-----|-----|-------|
|        |              |            |        |     |     |       |
|        |              |            |        |     |     |       |
|        |              |            |        |     |     |       |
|        |              |            |        |     |     |       |



**Legend**

16090008

Active\_Leases



**TRACT 44596 - Terrebonne Parish, Louisiana**

All of the lands now or formerly constituting the beds and bottoms of all water bodies of every nature and description as to which title is vested in the State of Louisiana, together with all islands arising therein and other lands formed by accretion or by reliction, where allowed by law, excepting tax adjudicated lands, and not presently under mineral lease on September 14, 2016, situated in Terrebonne Parish, Louisiana, and more particularly described as follows: Beginning at a point having Coordinates of X = 2,219,301.35 and Y = 159,961.92; thence North 89 degrees 39 minutes 55 seconds East 3,800.00 feet to a point having Coordinates of X = 2,223,101.29 and Y = 159,984.12; thence North 89 degrees 39 minutes 53 seconds East 1,686.97 feet to a point having Coordinates of X = 2,224,788.23 and Y = 159,993.99, said point being on the Western boundary of State Lease No. 2620 as amended, thence on and along said Western boundary of State Lease No. 2620 as amended, the following courses; South 02 degrees 14 minutes 50 seconds East 229.27 feet; South 38 degrees 50 minutes 00 seconds West 740.00 feet; South 16 degrees 55 minutes 00 seconds West 735.00 feet; South 12 degrees 07 minutes 59 seconds East 655.00 feet; South 34 degrees 55 minutes 03 seconds West 399.99 feet; South 24 degrees 20 minutes 00 seconds West 880.01 feet; South 05 degrees 24 minutes 00 seconds East 2,015.59 feet; thence South 89 degrees 40 minutes 16 seconds West 723.02 feet to a point having Coordinates of X = 2,223,132.14 and Y = 154,704.21; thence South 89 degrees 39 minutes 55 seconds West 3,800.00 feet to a point having Coordinates of X = 2,219,332.20 and Y = 154,682.01; thence North 00 degrees 20 minutes 05 seconds West 5,280.00 feet to the point of beginning, containing approximately **572.91 acres**, all as more particularly outlined on a plat on file in the Office of Mineral Resources, Department of Natural Resources. All bearings, distances and coordinates are based on Louisiana Coordinate System of 1927, (North or South Zone), where applicable.

NOTE: The above description of the Tract nominated for the purpose of acquiring a mineral lease or a geophysical agreement has been provided and corrected, where required, exclusively by the nominating party. Any mineral lease or geophysical agreement selected from this Tract and awarded by the Louisiana State Mineral and Energy Board shall be without warranty of any kind, either express, implied or statutory including, but not limited to, title or the implied warranties of merchantability and fitness for a particular purpose.

An error or omission in the nominating party's Tract description may require that a State mineral lease or geophysical agreement be modified, canceled or abrogated due to the existence of conflicting leases, operating agreements, private claims or other future obligations or conditions within the Tract described. In such case, however, the Louisiana State Mineral and Energy Board shall not be obligated to refund any consideration paid by the Lessee prior to such modification, cancellation or abrogation including, but not limited to, bonuses, rentals and royalties.

NOTE: The State of Louisiana does hereby reserve, and this lease shall be subject to, the imprescriptible right of surface use in the nature of a servitude in favor of the Department of Natural Resources, including its Offices and Commissions, for the sole purpose of implementing, constructing, servicing and maintaining approved coastal zone management and/or restoration projects. Utilization of any and all rights derived under this lease by the mineral lessee, its agents, successors or assigns, shall not interfere with nor hinder the reasonable surface use by the Department of Natural Resources, its Offices or Commissions, as herein above reserved.

Applicant: OIL LAND SERVICES, INC.

| Bidder | Cash Payment | Price/Acre | Rental | Oil | Gas | Other |
|--------|--------------|------------|--------|-----|-----|-------|
|        |              |            |        |     |     |       |
|        |              |            |        |     |     |       |
|        |              |            |        |     |     |       |
|        |              |            |        |     |     |       |

**Legend**  
16090002  
Active\_Leases

