

TRACT 45180 - Tensas Parish, Louisiana

All of the lands now or formerly constituting the beds and bottoms of all water bodies of every nature and description as to which title is vested in the State of Louisiana, together with all islands arising therein and other lands formed by accretion or by reliction, where allowed by law, excepting tax adjudicated lands, and not presently under mineral lease on September 11, 2019, situated in Tensas Parish, Louisiana, and more particularly described as follows: Beginning at a point having Coordinates of X = 2,327,706.98 and Y = 507,519.97; thence South 00 degrees 24 minutes 54 seconds East 10,684.67 feet to a point having Coordinates of X = 2,327,784.37 and Y = 496,835.58; thence South 89 degrees 20 minutes 03 seconds West 7,904.59 feet to a point having Coordinates of X = 2,319,880.32 and Y = 496,743.73; thence North 00 degrees 25 minutes 31 seconds West 10,715.37 feet to a point having Coordinates of X = 2,319,800.78 and Y = 507,458.80; thence North 89 degrees 33 minutes 24 seconds East 7,906.44 feet to the point of beginning, containing approximately **25 acres**, all as more particularly outlined on a plat on file in the Office of Mineral Resources, Department of Natural Resources. All bearings, distances and coordinates are based on Louisiana Coordinate System of 1927, (North or South Zone), where applicable.

NOTE: The above description of the Tract nominated for lease has been provided and corrected, where required, exclusively by the nomination party. Any mineral lease selected from this Tract and awarded by the Louisiana State Mineral and Energy Board shall be without warranty of any kind, either express, implied, or statutory, including, but not limited to, the implied warranties of merchantability and fitness for a particular purpose. Should the mineral lease awarded by the Louisiana State Mineral and Energy Board be subsequently modified, cancelled or abrogated due to the existence of conflicting leases, operating agreements, private claims or other future obligations or conditions which may affect all or any portion of the leased Tract, it shall not relieve the Lessee of the obligation to pay any bonus due thereon to the Louisiana State Mineral and Energy Board, nor shall the Louisiana State Mineral and Energy Board be obligated to refund any consideration paid by the Lessor prior to such modification, cancellation, or abrogation, including, but not limited to, bonuses, rentals and royalties.

Applicant: SPECTER EXPLORATION, INC.

Bidder	Cash Payment	Price/Acre	Rental	Oil	Gas	Other

Legend



19090013

P.O.B.

TENSAS

T13N - R10E

T12N - R10E

BEILER BAYOU



0 2,000 Feet

Office of Mineral Resources, Acres: 25 Tract Number: 45180

TRACT 45181 - Tensas Parish, Louisiana

All of the lands now or formerly constituting the beds and bottoms of all water bodies of every nature and description as to which title is vested in the State of Louisiana, together with all islands arising therein and other lands formed by accretion or by reliction, where allowed by law, excepting tax adjudicated lands, and not presently under mineral lease on September 11, 2019, situated in Tensas Parish, Louisiana, and more particularly described as follows: Beginning at a point having Coordinates of X = 2,333,024.09 and Y = 504,897.24; thence South 00 degrees 33 minutes 00 seconds East 3,326.58 feet to a point having Coordinates of X = 2,333,056.01 and Y = 501,570.82; thence South 48 degrees 04 minutes 06 seconds West 7,086.10 feet to a point having Coordinates of X = 2,327,784.37 and Y = 496,835.58; thence North 00 degrees 24 minutes 54 seconds West 8,008.15 feet to a point having Coordinates of X = 2,327,726.37 and Y = 504,843.52; thence North 89 degrees 25 minutes 08 seconds East 5,297.99 feet to the point of beginning, (This tract includes only Hopaka Lake and excludes any portion of the Buckhorn Wildlife Management Area that lies within the above description), containing approximately **14 acres**, all as more particularly outlined on a plat on file in the Office of Mineral Resources, Department of Natural Resources. All bearings, distances and coordinates are based on Louisiana Coordinate System of 1927, (North or South Zone), where applicable.

NOTE: The above description of the Tract nominated for lease has been provided and corrected, where required, exclusively by the nomination party. Any mineral lease selected from this Tract and awarded by the Louisiana State Mineral and Energy Board shall be without warranty of any kind, either express, implied, or statutory, including, but not limited to, the implied warranties of merchantability and fitness for a particular purpose. Should the mineral lease awarded by the Louisiana State Mineral and Energy Board be subsequently modified, cancelled or abrogated due to the existence of conflicting leases, operating agreements, private claims or other future obligations or conditions which may affect all or any portion of the leased Tract, it shall not relieve the Lessee of the obligation to pay any bonus due thereon to the Louisiana State Mineral and Energy Board, nor shall the Louisiana State Mineral and Energy Board be obligated to refund any consideration paid by the Lessor prior to such modification, cancellation, or abrogation, including, but not limited to, bonuses, rentals and royalties.

Applicant: SPECTER EXPLORATION, INC.

Bidder	Cash Payment	Price/ Acre	Rental	Oil	Gas	Other

Legend



19090012

Wildlife



TENSAS

T12N - R10E

P.O.B.

TURKEY LAKE

BUCKHORN WMA

HOPAKA LAKE



0 1,500 Feet

Office of Mineral Resources, Acres: 14 Tract Number: 45181

TRACT 45182 - Tensas Parish, Louisiana

All of the lands now or formerly constituting the beds and bottoms of all water bodies of every nature and description as to which title is vested in the State of Louisiana, together with all islands arising therein and other lands formed by accretion or by reliction, where allowed by law, excepting tax adjudicated lands, and not presently under mineral lease on September 11, 2019, situated in Tensas Parish, Louisiana, and more particularly described as follows: Beginning at a point having Coordinates of X = 2,348,839.00 and Y = 502,299.39; thence South 00 degrees 08 minutes 29 seconds East 10,618.32 feet to a point having Coordinates of X = 2,348,865.21 and Y = 491,681.10; thence South 89 degrees 40 minutes 12 seconds West 5,296.79 feet to a point having Coordinates of X = 2,343,568.51 and Y = 491,650.59; thence North 00 degrees 17 minutes 11 seconds West 5,311.19 feet to a point having Coordinates of X = 2,343,541.96 and Y = 496,961.71; thence North 00 degrees 05 minutes 58 seconds West 5,297.36 feet to a point having Coordinates of X = 2,343,532.78 and Y = 502,259.06; thence North 89 degrees 33 minutes 52 seconds East 5,306.38 feet to the point of beginning, (This tract includes only Lake Marydale and Saddletree Lake that lie within the Buckhorn Wildlife Management Area), containing approximately **30 acres**, all as more particularly outlined on a plat on file in the Office of Mineral Resources, Department of Natural Resources. All bearings, distances and coordinates are based on Louisiana Coordinate System of 1927, (North or South Zone), where applicable.

NOTE: The above description of the Tract nominated for lease has been provided and corrected, where required, exclusively by the nomination party. Any mineral lease selected from this Tract and awarded by the Louisiana State Mineral and Energy Board shall be without warranty of any kind, either express, implied, or statutory, including, but not limited to, the implied warranties of merchantability and fitness for a particular purpose. Should the mineral lease awarded by the Louisiana State Mineral and Energy Board be subsequently modified, cancelled or abrogated due to the existence of conflicting leases, operating agreements, private claims or other future obligations or conditions which may affect all or any portion of the leased Tract, it shall not relieve the Lessee of the obligation to pay any bonus due thereon to the Louisiana State Mineral and Energy Board, nor shall the Louisiana State Mineral and Energy Board be obligated to refund any consideration paid by the Lessor prior to such modification, cancellation, or abrogation, including, but not limited to, bonuses, rentals and royalties.

NOTE: This tract is located in the Buckhorn Wildlife Management Area under the jurisdiction of the Louisiana Department of Wildlife and Fisheries which has promulgated rules and regulations for the protection of game and wildlife on the aforesaid Tract and, therefore, shall be subject to said rules and regulations, a copy of which may be obtained from the Department of Wildlife and Fisheries. In addition to the specific rules and regulations applicable, the following shall apply regarding operations under this mineral lease:

1. No activities will be allowed without written authorization from the Louisiana Department of Wildlife and Fisheries.

2. Proposed projects will be evaluated on a case by case basis. Modifications to proposed project features, including, but not limited to, access routes, spoil placement, well sites, flowlines and appurtenant structures may be required by the Department of Wildlife and Fisheries.

3. Compensatory mitigation will be required to offset unavoidable wetland impacts.

4. Removal of all structures, facilities and equipment will be required within 120 days of abandonment unless otherwise agreed to in writing by the Department of Wildlife and Fisheries.

5. No activities will be allowed during the hunting season unless approved by the Department.

6. Compliance with the said WMA regulations will be required unless otherwise specified by the Department.

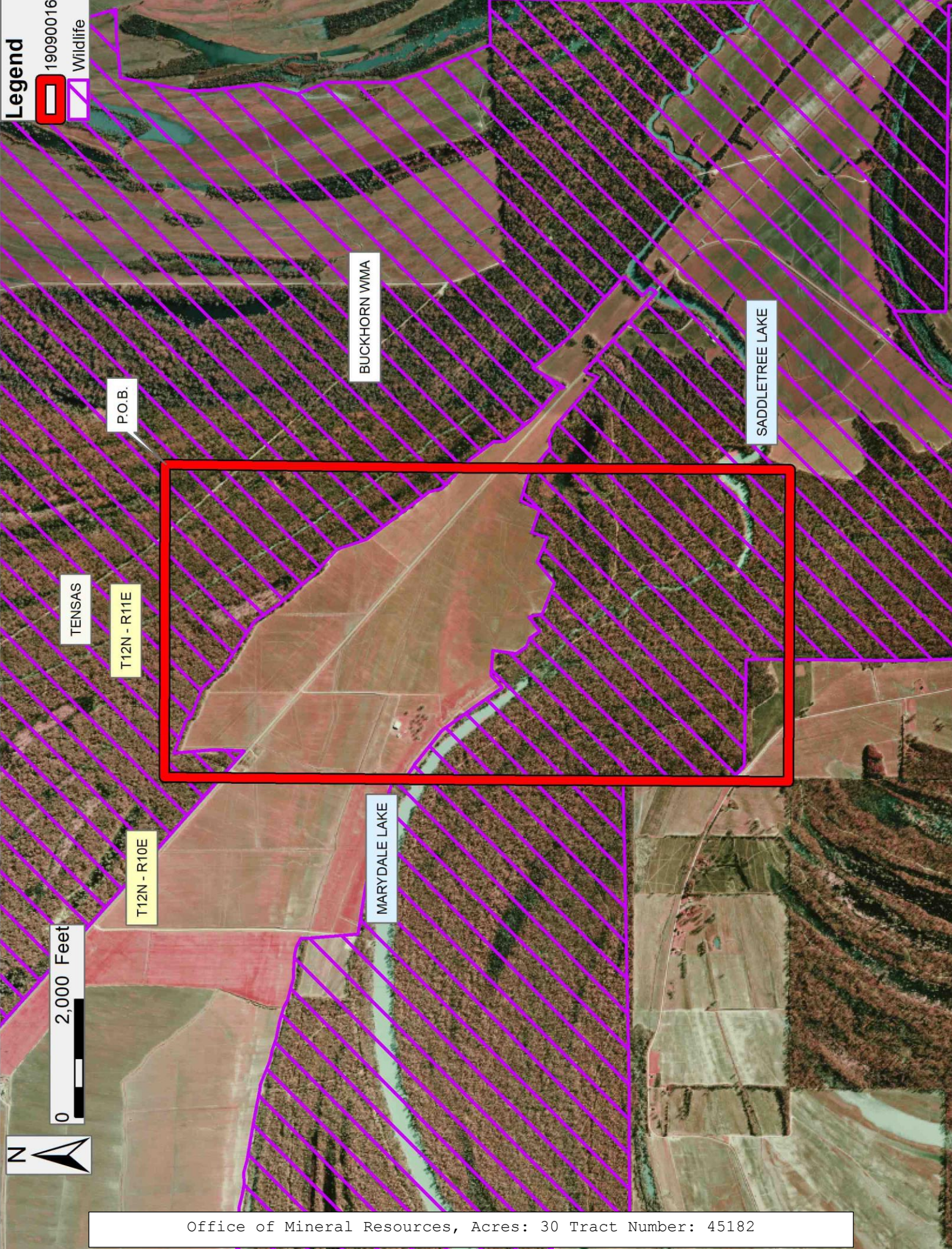
7. Prior to submitting applications for wetland permits to Federal and State permitting agencies the leaseholder shall coordinate project details with the Department of Wildlife and Fisheries. Contact person for the Department will be Kyle Balkum at (225) 765-2819.

8. Additionally, the Department will require a minimum bonus of \$150.00 per acre and a minimum royalty of 25%.

Applicant: SPECTER EXPLORATION, INC.

Bidder	Cash Payment	Price/Acre	Rental	Oil	Gas	Other

Legend
19090016
Wildlife



Office of Mineral Resources, Acres: 30 Tract Number: 45182

TRACT 45183 - Tensas Parish, Louisiana

All of the lands now or formerly constituting the beds and bottoms of all water bodies of every nature and description as to which title is vested in the State of Louisiana, together with all islands arising therein and other lands formed by accretion or by reliction, where allowed by law, excepting tax adjudicated lands, and not presently under mineral lease on September 11, 2019, situated in Tensas Parish, Louisiana, and more particularly described as follows: Beginning at a point having Coordinates of X = 2,343,532.78 and Y = 502,259.06; thence South 00 degrees 05 minutes 58 seconds East 5,297.36 feet to a point having Coordinates of X = 2,343,541.96 and Y = 496,961.71; thence South 89 degrees 31 minutes 04 seconds West 10,441.24 feet to a point having Coordinates of X = 2,333,101.09 and Y = 496,873.82; thence North 00 degrees 33 minutes 00 seconds West 5,319.21 feet to a point having Coordinates of X = 2,333,050.04 and Y = 502,192.79; thence North 89 degrees 38 minutes 16 seconds East 10,482.94 feet to the point of beginning, (This tract includes only Turkey Lake and Lake Marydale that lie within the Buckhorn Wildlife Management Area), containing approximately **84 acres**, all as more particularly outlined on a plat on file in the Office of Mineral Resources, Department of Natural Resources. All bearings, distances and coordinates are based on Louisiana Coordinate System of 1927, (North or South Zone), where applicable.

NOTE: The above description of the Tract nominated for lease has been provided and corrected, where required, exclusively by the nomination party. Any mineral lease selected from this Tract and awarded by the Louisiana State Mineral and Energy Board shall be without warranty of any kind, either express, implied, or statutory, including, but not limited to, the implied warranties of merchantability and fitness for a particular purpose. Should the mineral lease awarded by the Louisiana State Mineral and Energy Board be subsequently modified, cancelled or abrogated due to the existence of conflicting leases, operating agreements, private claims or other future obligations or conditions which may affect all or any portion of the leased Tract, it shall not relieve the Lessee of the obligation to pay any bonus due thereon to the Louisiana State Mineral and Energy Board, nor shall the Louisiana State Mineral and Energy Board be obligated to refund any consideration paid by the Lessor prior to such modification, cancellation, or abrogation, including, but not limited to, bonuses, rentals and royalties.

NOTE: This tract is located in the Buckhorn Wildlife Management Area under the jurisdiction of the Louisiana Department of Wildlife and Fisheries which has promulgated rules and regulations for the protection of game and wildlife on the aforesaid Tract and, therefore, shall be subject to said rules and regulations, a copy of which may be obtained from the Department of Wildlife and Fisheries. In addition to the specific rules and regulations applicable, the following shall apply regarding operations under this mineral lease:

1. No activities will be allowed without written authorization from the Louisiana Department of Wildlife and Fisheries.

2. Proposed projects will be evaluated on a case by case basis. Modifications to proposed project features, including, but not limited to, access routes, spoil placement, well sites, flowlines and appurtenant structures may be required by the Department of Wildlife and Fisheries.

3. Compensatory mitigation will be required to offset unavoidable wetland impacts.

4. Removal of all structures, facilities and equipment will be required within 120 days of abandonment unless otherwise agreed to in writing by the Department of Wildlife and Fisheries.

5. No activities will be allowed during the hunting season unless approved by the Department.

6. Compliance with the said WMA regulations will be required unless otherwise specified by the Department.

7. Prior to submitting applications for wetland permits to Federal and State permitting agencies the leaseholder shall coordinate project details with the Department of Wildlife and Fisheries. Contact person for the Department will be Kyle Balkum at (225) 765-2819.

8. Additionally, the Department will require a minimum bonus of \$150.00 per acre and a minimum royalty of 25%.

Applicant: SPECTER EXPLORATION, INC.

Bidder	Cash Payment	Price/Acre	Rental	Oil	Gas	Other

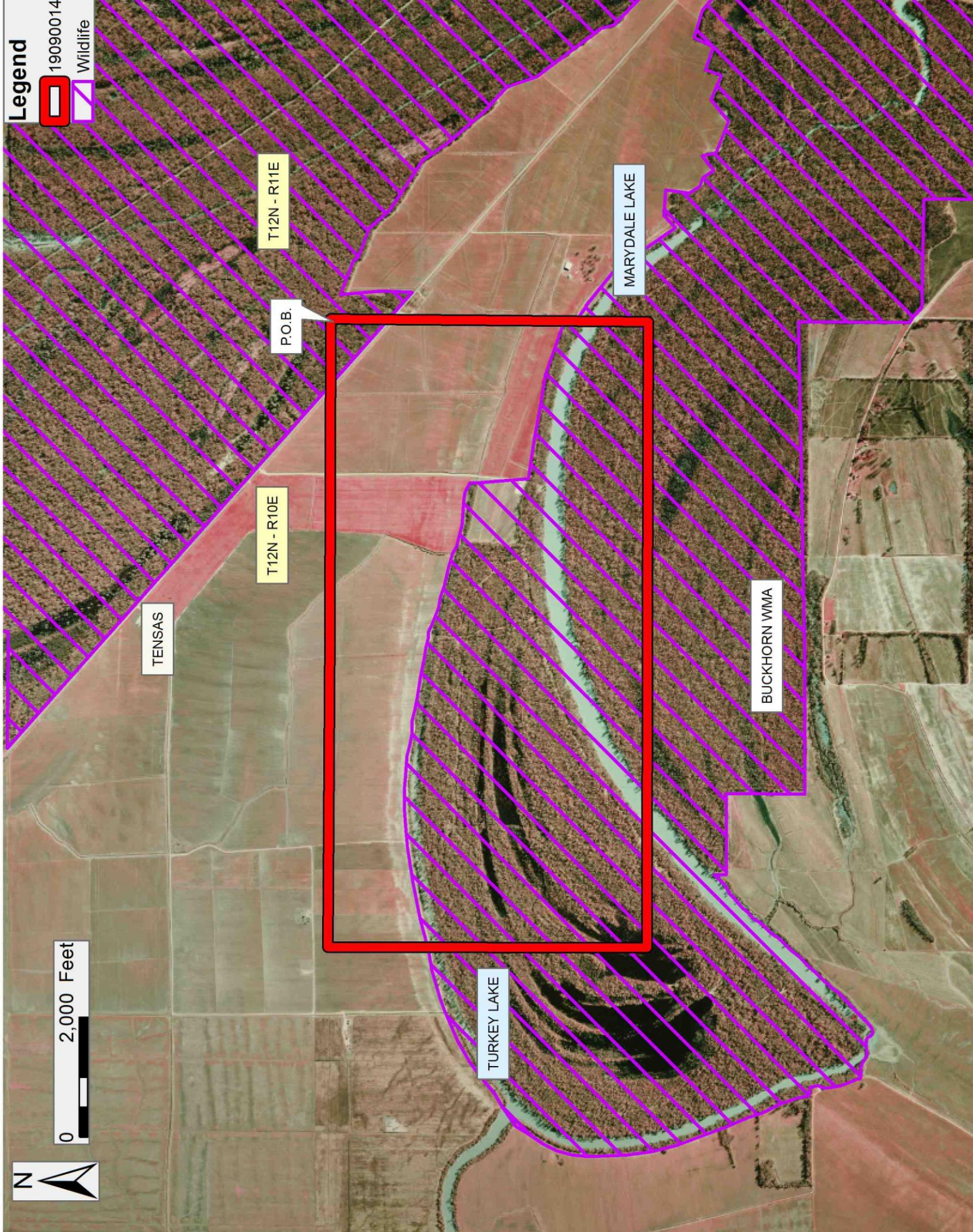


0 2,000 Feet

Legend



19090014
Wildlife



TENSAS

T12N - R10E

T12N - R11E

P.O.B.

TURKEY LAKE

MARYDALE LAKE

BUCKHORN WMA

TRACT 45184 - Tensas Parish, Louisiana

All of the lands now or formerly constituting the beds and bottoms of all water bodies of every nature and description as to which title is vested in the State of Louisiana, together with all islands arising therein and other lands formed by accretion or by reliction, where allowed by law, excepting tax adjudicated lands, and not presently under mineral lease on September 11, 2019, situated in Tensas Parish, Louisiana, and more particularly described as follows: Beginning at a point having Coordinates of X = 2,333,092.49 and Y = 491,571.51; thence South 89 degrees 37 minutes 39 seconds West 5,272.71 feet to a point having Coordinates of X = 2,327,819.89 and Y = 491,537.24; thence North 00 degrees 23 minutes 03 seconds West 5,298.46 feet to a point having Coordinates of X = 2,327,784.37 and Y = 496,835.58; thence North 48 degrees 04 minutes 06 seconds East 7,086.10 feet to a point having Coordinates of X = 2,333,056.01 and Y = 501,570.82; thence South 00 degrees 33 minutes 00 seconds East 4,697.22 feet to a point having Coordinates of X = 2,333,101.09 and Y = 496,873.82; thence South 00 degrees 05 minutes 35 seconds West 5,302.32 feet to the point of beginning, (This tract includes only Turkey Lake and Lake Marydale and excludes any portion of the above described tract that lies outside of the Buckhorn Wildlife Management Area), containing approximately **52 acres**, all as more particularly outlined on a plat on file in the Office of Mineral Resources, Department of Natural Resources. All bearings, distances and coordinates are based on Louisiana Coordinate System of 1927, (North or South Zone), where applicable.

NOTE: The above description of the Tract nominated for lease has been provided and corrected, where required, exclusively by the nomination party. Any mineral lease selected from this Tract and awarded by the Louisiana State Mineral and Energy Board shall be without warranty of any kind, either express, implied, or statutory, including, but not limited to, the implied warranties of merchantability and fitness for a particular purpose. Should the mineral lease awarded by the Louisiana State Mineral and Energy Board be subsequently modified, cancelled or abrogated due to the existence of conflicting leases, operating agreements, private claims or other future obligations or conditions which may affect all or any portion of the leased Tract, it shall not relieve the Lessee of the obligation to pay any bonus due thereon to the Louisiana State Mineral and Energy Board, nor shall the Louisiana State Mineral and Energy Board be obligated to refund any consideration paid by the Lessor prior to such modification, cancellation, or abrogation, including, but not limited to, bonuses, rentals and royalties.

NOTE: This tract is located in the Buckhorn Wildlife Management Area under the jurisdiction of the Louisiana Department of Wildlife and Fisheries which has promulgated rules and regulations for the protection of game and wildlife on the aforesaid Tract and, therefore, shall be subject to said rules and regulations, a copy of which may be obtained from the Department of Wildlife and Fisheries. In addition to the specific rules and regulations applicable, the following shall apply regarding operations under this mineral lease:

1. No activities will be allowed without written authorization from the Louisiana Department of Wildlife and Fisheries.

2. Proposed projects will be evaluated on a case by case basis. Modifications to proposed project features, including, but not limited to, access routes, spoil placement, well sites, flowlines and appurtenant structures may be required by the Department of Wildlife and Fisheries.

3. Compensatory mitigation will be required to offset unavoidable wetland impacts.

4. Removal of all structures, facilities and equipment will be required within 120 days of abandonment unless otherwise agreed to in writing by the Department of Wildlife and Fisheries.

5. No activities will be allowed during the hunting season unless approved by the Department.

6. Compliance with the said WMA regulations will be required unless otherwise specified by the Department.

7. Prior to submitting applications for wetland permits to Federal and State permitting agencies the leaseholder shall coordinate project details with the Department of Wildlife and Fisheries. Contact person for the Department will be Kyle Balkum at (225) 765-2819.

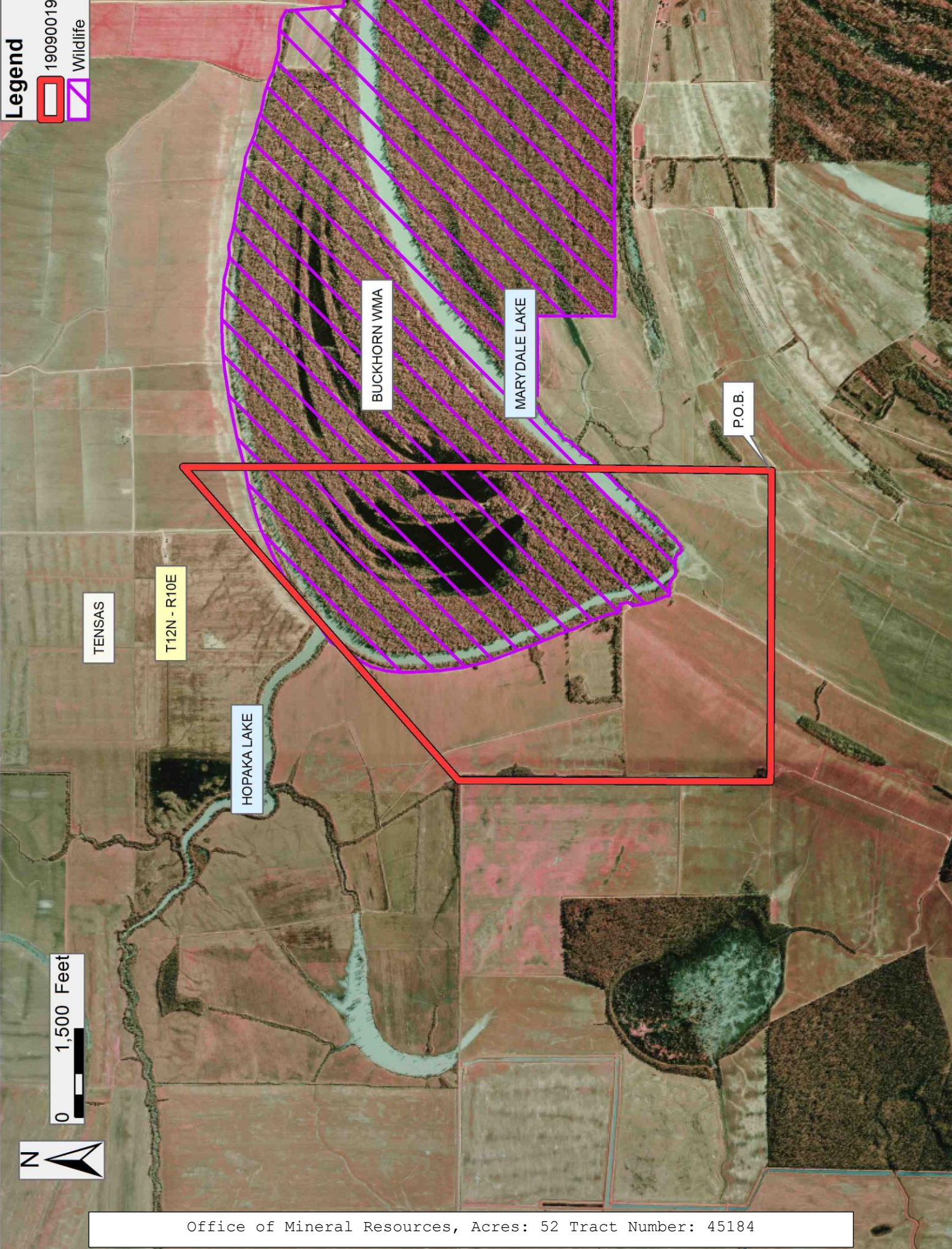
8. Additionally, the Department will require a minimum bonus of \$150.00 per acre and a minimum royalty of 25%.

Applicant: SPECTER EXPLORATION, INC.

Bidder	Cash Payment	Price/Acre	Rental	Oil	Gas	Other

Legend

- 190900019
- Wildlife



Office of Mineral Resources, Acres: 52 Tract Number: 45184

TRACT 45185 - Tensas Parish, Louisiana

All of the lands now or formerly constituting the beds and bottoms of all water bodies of every nature and description as to which title is vested in the State of Louisiana, together with all islands arising therein and other lands formed by accretion or by reliction, where allowed by law, excepting tax adjudicated lands, and not presently under mineral lease on September 11, 2019, situated in Tensas Parish, Louisiana, and more particularly described as follows: Beginning at a point having Coordinates of X = 2,343,541.96 and Y = 496,961.71; thence South 00 degrees 17 minutes 11 seconds East 5,311.19 feet to a point having Coordinates of X = 2,343,568.51 and Y = 491,650.59; thence South 89 degrees 34 minutes 03 seconds West 10,476.32 feet to a point having Coordinates of X = 2,333,092.49 and Y = 491,571.51; thence North 00 degrees 05 minutes 35 seconds East 5,302.32 feet to a point having Coordinates of X = 2,333,101.09 and Y = 496,873.82; thence North 89 degrees 31 minutes 04 seconds East 10,441.24 feet to the point of beginning, (This tract includes only Lake Marydale that lie within the Buckhorn Wildlife Management Area), containing approximately **26 acres**, all as more particularly outlined on a plat on file in the Office of Mineral Resources, Department of Natural Resources. All bearings, distances and coordinates are based on Louisiana Coordinate System of 1927, (North or South Zone), where applicable.

NOTE: The above description of the Tract nominated for lease has been provided and corrected, where required, exclusively by the nomination party. Any mineral lease selected from this Tract and awarded by the Louisiana State Mineral and Energy Board shall be without warranty of any kind, either express, implied, or statutory, including, but not limited to, the implied warranties of merchantability and fitness for a particular purpose. Should the mineral lease awarded by the Louisiana State Mineral and Energy Board be subsequently modified, cancelled or abrogated due to the existence of conflicting leases, operating agreements, private claims or other future obligations or conditions which may affect all or any portion of the leased Tract, it shall not relieve the Lessee of the obligation to pay any bonus due thereon to the Louisiana State Mineral and Energy Board, nor shall the Louisiana State Mineral and Energy Board be obligated to refund any consideration paid by the Lessor prior to such modification, cancellation, or abrogation, including, but not limited to, bonuses, rentals and royalties.

NOTE: This tract is located in the Buckhorn Wildlife Management Area under the jurisdiction of the Louisiana Department of Wildlife and Fisheries which has promulgated rules and regulations for the protection of game and wildlife on the aforesaid Tract and, therefore, shall be subject to said rules and regulations, a copy of which may be obtained from the Department of Wildlife and Fisheries. In addition to the specific rules and regulations applicable, the following shall apply regarding operations under this mineral lease:

1. No activities will be allowed without written authorization from the Louisiana Department of Wildlife and Fisheries.

2. Proposed projects will be evaluated on a case by case basis. Modifications to proposed project features, including, but not limited to, access routes, spoil placement, well sites, flowlines and appurtenant structures may be required by the Department of Wildlife and Fisheries.

3. Compensatory mitigation will be required to offset unavoidable wetland impacts.

4. Removal of all structures, facilities and equipment will be required within 120 days of abandonment unless otherwise agreed to in writing by the Department of Wildlife and Fisheries.

5. No activities will be allowed during the hunting season unless approved by the Department.

6. Compliance with the said WMA regulations will be required unless otherwise specified by the Department.

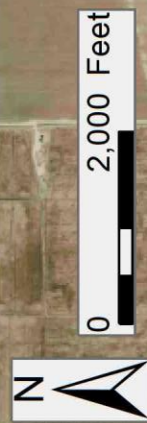
7. Prior to submitting applications for wetland permits to Federal and State permitting agencies the leaseholder shall coordinate project details with the Department of Wildlife and Fisheries. Contact person for the Department will be Kyle Balkum at (225) 765-2819.

8. Additionally, the Department will require a minimum bonus of \$150.00 per acre and a minimum royalty of 25%.

Applicant: SPECTER EXPLORATION, INC.

Bidder	Cash Payment	Price/Acre	Rental	Oil	Gas	Other

Legend
19090015
Wildlife



T12N - R11E

P.O.B.

TENSAS

T12N - R10E

BUCKHORN WMA

MARYDALE LAKE

Office of Mineral Resources, Acres: 26 Tract Number: 45185

TRACT 45186 - Natchitoches and Red River Parishes, Louisiana

All of the lands now or formerly constituting the beds and bottoms of all water bodies of every nature and description as to which title is vested in the State of Louisiana, together with all islands arising therein and other lands formed by accretion or by reliction, where allowed by law, excepting tax adjudicated lands, and not presently under mineral lease on September 11, 2019, situated in Natchitoches and Red River Parishes, Louisiana, and more particularly described as follows: Beginning at a point being the Northwest corner of State Lease No. 21904 having Coordinates of X = 1,744,986.96 and Y = 450,841.85; thence South 01 degree 19 minutes 39 seconds West 5,326.86 feet along the West line of said State Lease No. 21904 to a point on the North line of State Lease No. 20404 Tract B, as amended, having Coordinates of X = 1,744,863.56 and Y = 445,516.42; thence along the boundary of said State Lease No. 20404 Tract B, as amended, the following courses: North 88 degrees 55 minutes 35 seconds West 363.63 feet to a point being its Northwest corner, having Coordinates of X = 1,744,500.00 and Y = 445,523.23 and South 185.24 feet to a point having Coordinates of X = 1,744,500.00 and Y = 445,337.99; thence West 4,685.40 feet to a point being the Southeast corner of State Lease No. 21854 having Coordinates of X = 1,739,814.60 and Y = 445,337.99; thence North 00 degrees 42 minutes 31 seconds East 5,504.28 feet along the East line of said State Lease No. 21854 to a point having Coordinates of X = 1,739,882.68 and Y = 450,841.85; thence East 5,104.28 feet to the point of beginning, containing approximately **12 acres**, all as more particularly outlined on a plat on file in the Office of Mineral Resources, Department of Natural Resources. All bearings, distances and coordinates are based on Louisiana Coordinate System of 1927, (North or South Zone), where applicable.

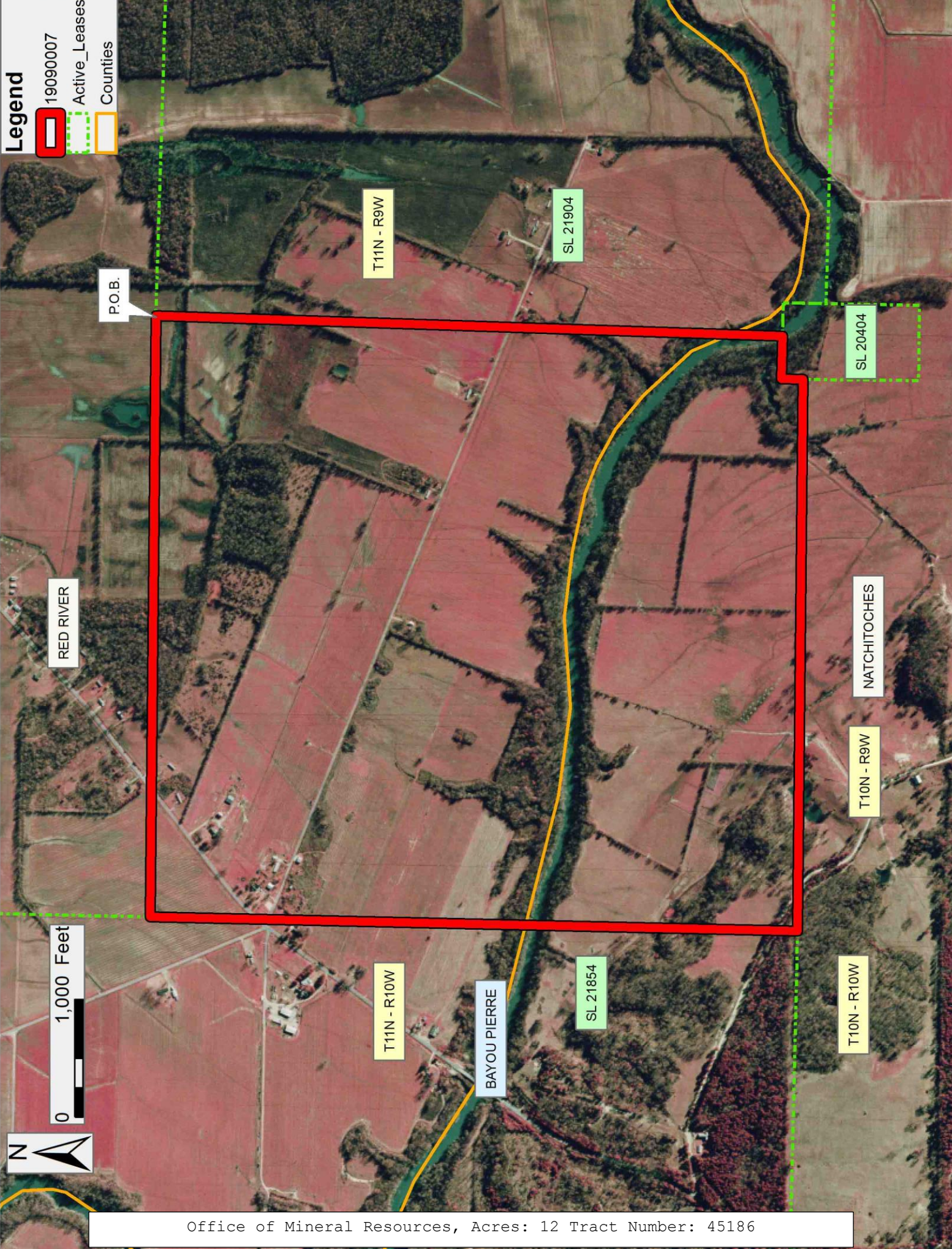
NOTE: The above description of the Tract nominated for lease has been provided and corrected, where required, exclusively by the nomination party. Any mineral lease selected from this Tract and awarded by the Louisiana State Mineral and Energy Board shall be without warranty of any kind, either express, implied, or statutory, including, but not limited to, the implied warranties of merchantability and fitness for a particular purpose. Should the mineral lease awarded by the Louisiana State Mineral and Energy Board be subsequently modified, cancelled or abrogated due to the existence of conflicting leases, operating agreements, private claims or other future obligations or conditions which may affect all or any portion of the leased Tract, it shall not relieve the Lessee of the obligation to pay any bonus due thereon to the Louisiana State Mineral and Energy Board, nor shall the Louisiana State Mineral and Energy Board be obligated to refund any consideration paid by the Lessor prior to such modification, cancellation, or abrogation, including, but not limited to, bonuses, rentals and royalties.

Applicant: HOLDEN OIL & GAS

Bidder	Cash Payment	Price/Acre	Rental	Oil	Gas	Other

Legend

- 19090007
- Active_Leases
- Counties



P.O.B.

RED RIVER

T11N - R9W

SL 21904

SL 20404

NATCHITOCHE

T10N - R9W

0 1,000 Feet



T11N - R10W

BAYOU PIERRE

SL 21854

T10N - R10W

TRACT 45187 - Natchitoches and Red River Parishes, Louisiana

All of the lands now or formerly constituting the beds and bottoms of all water bodies of every nature and description as to which title is vested in the State of Louisiana, together with all islands arising therein and other lands formed by accretion or by reliction, where allowed by law, excepting tax adjudicated lands, and not presently under mineral lease on September 11, 2019, situated in Natchitoches and Red River Parishes, Louisiana, and more particularly described as follows: Beginning at the Easternmost Northeast corner of State Lease No. 21904 and a point on the South boundary of State Lease No. 20404, as amended having Coordinates of X = 1,750,610.43 and Y = 450,574.53; thence South 89 degrees 59 minutes 18 seconds East 5,158.53 feet along the South boundary of said State Lease No. 20404, as amended, to its Southeast corner having Coordinates of X = 1,755,768.96 and Y = 450,573.49; thence South 00 degrees 40 minutes 52 seconds West 5,417.53 feet to a point having Coordinates of X = 1,755,704.57 and Y = 445,156.34; thence North 89 degrees 14 minutes 11 seconds West 5,197.46 feet to a point on the East boundary of said State Lease No. 21904 having Coordinates of X = 1,750,507.57 and Y = 445,225.61; thence North 01 degrees 06 minutes 06 seconds East 5,349.92 feet along the East boundary of said State Lease No. 21904 to the point of beginning, containing approximately **18 acres**, all as more particularly outlined on a plat on file in the Office of Mineral Resources, Department of Natural Resources. All bearings, distances and coordinates are based on Louisiana Coordinate System of 1927, (North or South Zone), where applicable.

NOTE: The above description of the Tract nominated for lease has been provided and corrected, where required, exclusively by the nomination party. Any mineral lease selected from this Tract and awarded by the Louisiana State Mineral and Energy Board shall be without warranty of any kind, either express, implied, or statutory, including, but not limited to, the implied warranties of merchantability and fitness for a particular purpose. Should the mineral lease awarded by the Louisiana State Mineral and Energy Board be subsequently modified, cancelled or abrogated due to the existence of conflicting leases, operating agreements, private claims or other future obligations or conditions which may affect all or any portion of the leased Tract, it shall not relieve the Lessee of the obligation to pay any bonus due thereon to the Louisiana State Mineral and Energy Board, nor shall the Louisiana State Mineral and Energy Board be obligated to refund any consideration paid by the Lessor prior to such modification, cancellation, or abrogation, including, but not limited to, bonuses, rentals and royalties.

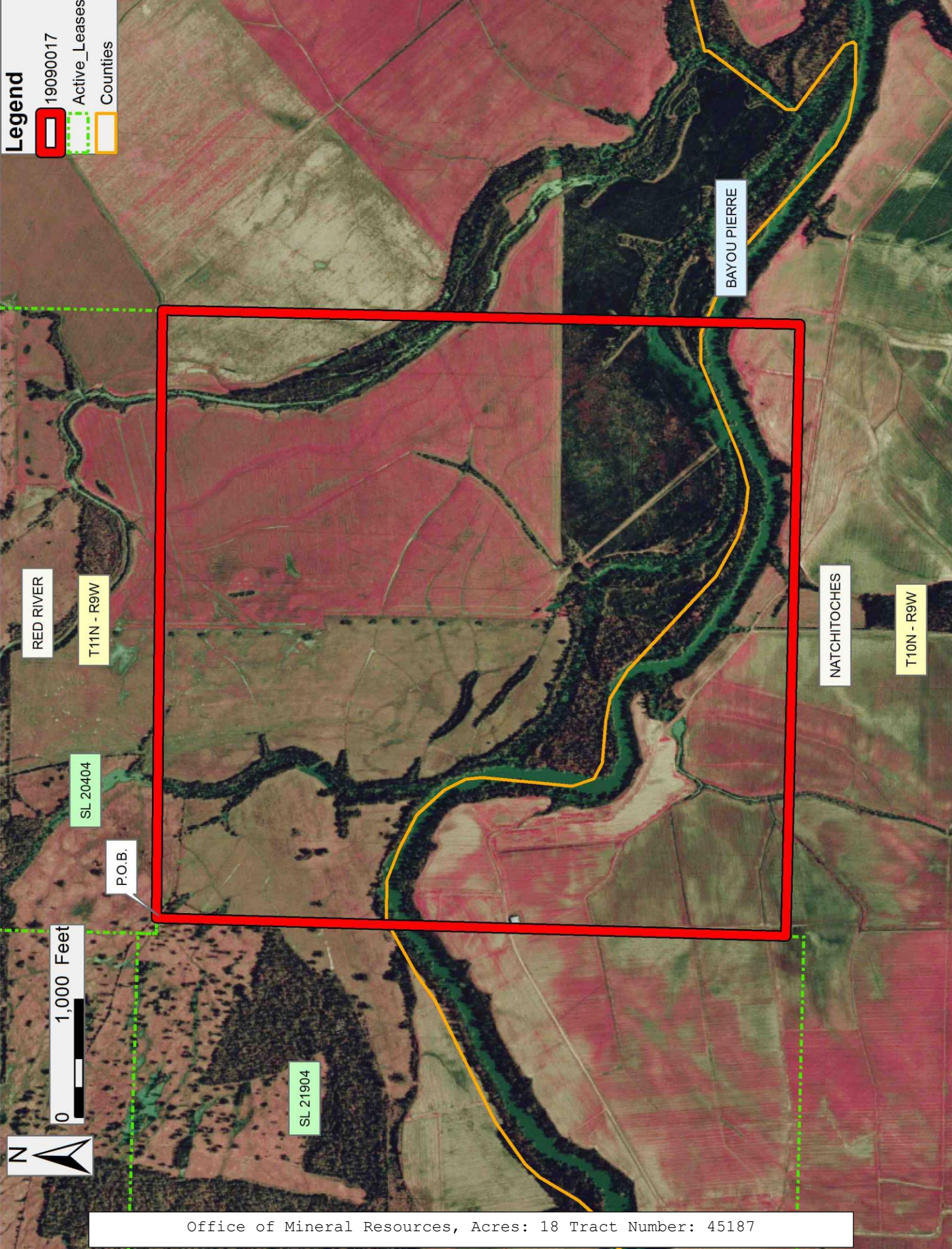
NOTE: Said lease description being limited to the surface of the earth down to a depth of 4,000 feet.

Applicant: ALJAM ENERGY

Bidder	Cash Payment	Price/ Acre	Rental	Oil	Gas	Other

Legend

- 19090017
- Active_Leases
- Counties



Office of Mineral Resources, Acres: 18 Tract Number: 45187

TRACT 45188 - Vermilion Parish, Louisiana

All of the lands now or formerly constituting the beds and bottoms of all water bodies of every nature and description as to which title is vested in the State of Louisiana, together with all islands arising therein and other lands formed by accretion or by reliction, where allowed by law, excepting tax adjudicated lands, and not presently under mineral lease on September 11, 2019, situated in Vermilion Parish, Louisiana, and more particularly described as follows: Beginning at a point having Coordinates of X = 1,747,264.49 and Y = 484,329.15; thence North 53 degrees 09 minutes 28 seconds East 13,268.20 feet to a point having Coordinates of X = 1,757,882.88 and Y = 492,284.96; thence South 46 degrees 21 minutes 32 seconds East 6,237.85 feet to a point having Coordinates of X = 1,762,397.08 and Y = 487,979.98; thence South 53 degrees 09 minutes 27 seconds West 13,268.21 feet to a point having Coordinates of X = 1,751,778.71 and Y = 480,024.14; thence North 46 degrees 21 minutes 32 seconds West 6,237.89 feet to the point of beginning, containing approximately **53 acres**, all as more particularly outlined on a plat on file in the Office of Mineral Resources, Department of Natural Resources. All bearings, distances and coordinates are based on Louisiana Coordinate System of 1927, (North or South Zone), where applicable.

NOTE: The above description of the Tract nominated for lease has been provided and corrected, where required, exclusively by the nomination party. Any mineral lease selected from this Tract and awarded by the Louisiana State Mineral and Energy Board shall be without warranty of any kind, either express, implied, or statutory, including, but not limited to, the implied warranties of merchantability and fitness for a particular purpose. Should the mineral lease awarded by the Louisiana State Mineral and Energy Board be subsequently modified, cancelled or abrogated due to the existence of conflicting leases, operating agreements, private claims or other future obligations or conditions which may affect all or any portion of the leased Tract, it shall not relieve the Lessee of the obligation to pay any bonus due thereon to the Louisiana State Mineral and Energy Board, nor shall the Louisiana State Mineral and Energy Board be obligated to refund any consideration paid by the Lessor prior to such modification, cancellation, or abrogation, including, but not limited to, bonuses, rentals and royalties.

Applicant: PATRICK L. DONOHUE PETROLEUM PROPERTIES, INC.

Bidder	Cash Payment	Price/Acre	Rental	Oil	Gas	Other

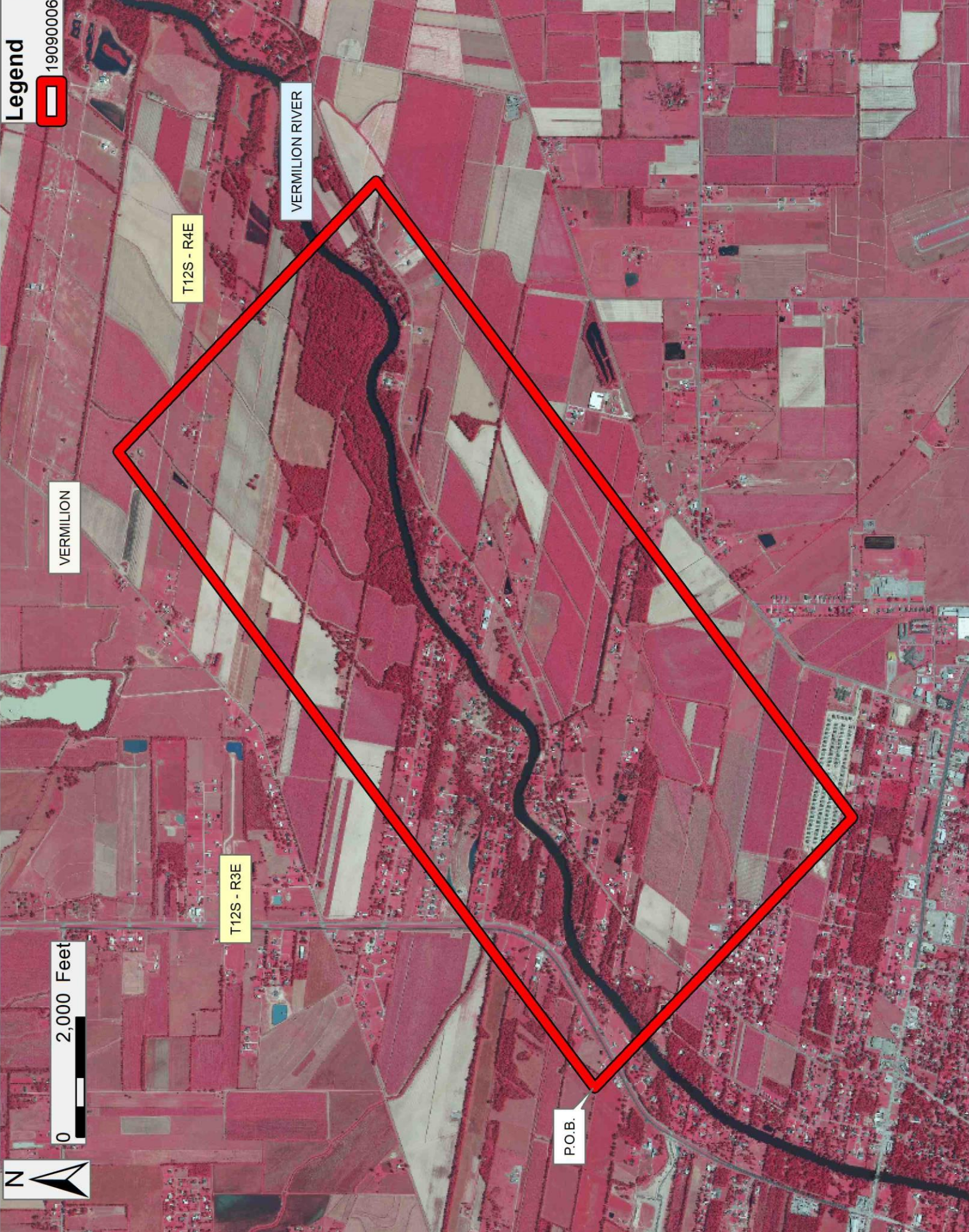
Legend



190900006



0 2,000 Feet



VERMILION

T12S - R4E

VERMILION RIVER

T12S - R3E

P.O.B.

Office of Mineral Resources, Acres: 53 Tract Number: 45188

TRACT 45189 - Vermilion Parish, Louisiana

All of the lands now or formerly constituting the beds and bottoms of all water bodies of every nature and description as to which title is vested in the State of Louisiana, together with all islands arising therein and other lands formed by accretion or by reliction, where allowed by law, excepting tax adjudicated lands, and not presently under mineral lease on September 11, 2019, situated in Vermilion Parish, Louisiana, and more particularly described as follows: Beginning at a point having Coordinates of X = 1,747,264.49 and Y = 484,329.15; thence South 46 degrees 21 minutes 32 seconds East 9,017.86 feet to a point having Coordinates of X = 1,753,790.50 and Y = 478,105.58; thence South 48 degrees 49 minutes 21 seconds West 12,455.21 feet to a point having the Coordinates X = 1,744,415.81 and Y = 469,905.12; thence North 80 degrees 47 minutes 08 seconds West 10,387.63 feet to a point having the Coordinates X = 1,734,162.23 and Y = 471,568.49; thence North 46 degrees 21 minutes 32 seconds West 2,055.49 feet to a point having the Coordinates X = 1,732,674.72 and Y = 472,987.07; thence North 49 degrees 20 minutes 44 seconds East 3,520.43 feet to a point being the Southeast corner of State Lease No. 21535, as amended, having the Coordinates X = 1,735,345.50 and Y = 475,280.61; thence along the boundary of said State Lease No. 21535, as amended, the following: Along a curve to the right having a radius of 2,930.00 feet and a center at X = 1,737,444.11 and Y = 473,235.93 to a point having Coordinates of X = 1,735,622.60 and Y = 475,530.92, North 50 degrees 06 minutes 52 seconds East 697.35 feet to a point having Coordinates of X = 1,736,157.70 and Y = 475,978.10, Along a curve to the left having a radius of 2,305.00 feet and a center at X = 1,734,712.68 and Y = 477,773.91 to a point having Coordinates of X = 1,736,349.58 and Y = 476,151.08; thence North 53 degrees 09 minutes 27 seconds East 13,638.77 feet to the point of beginning, (This tract includes only waterbottoms claimed and owned by the state and specifically excludes any land which the state may claim or own and to which the mineral rights are vested in the state), containing approximately **88 acres**, all as more particularly outlined on a plat on file in the Office of Mineral Resources, Department of Natural Resources. All bearings, distances and coordinates are based on Louisiana Coordinate System of 1927, (North or South Zone), where applicable.

NOTE: The above description of the Tract nominated for lease has been provided and corrected, where required, exclusively by the nomination party. Any mineral lease selected from this Tract and awarded by the Louisiana State Mineral and Energy Board shall be without warranty of any kind, either express, implied, or statutory, including, but not limited to, the implied warranties of merchantability and fitness for a particular purpose. Should the mineral lease awarded by the Louisiana State Mineral and Energy Board be subsequently modified, cancelled or abrogated due to the existence of conflicting leases, operating agreements, private claims or other future obligations or conditions which may affect all or any portion of the leased Tract, it shall not relieve the Lessee of the obligation to pay any bonus due thereon to the Louisiana State Mineral and Energy Board, nor shall the Louisiana State Mineral and Energy Board be obligated to refund any

consideration paid by the Lessor prior to such modification, cancellation, or abrogation, including, but not limited to, bonuses, rentals and royalties.

Applicant: PATRICK L. DONOHUE PETROLEUM PROPERTIES, INC.

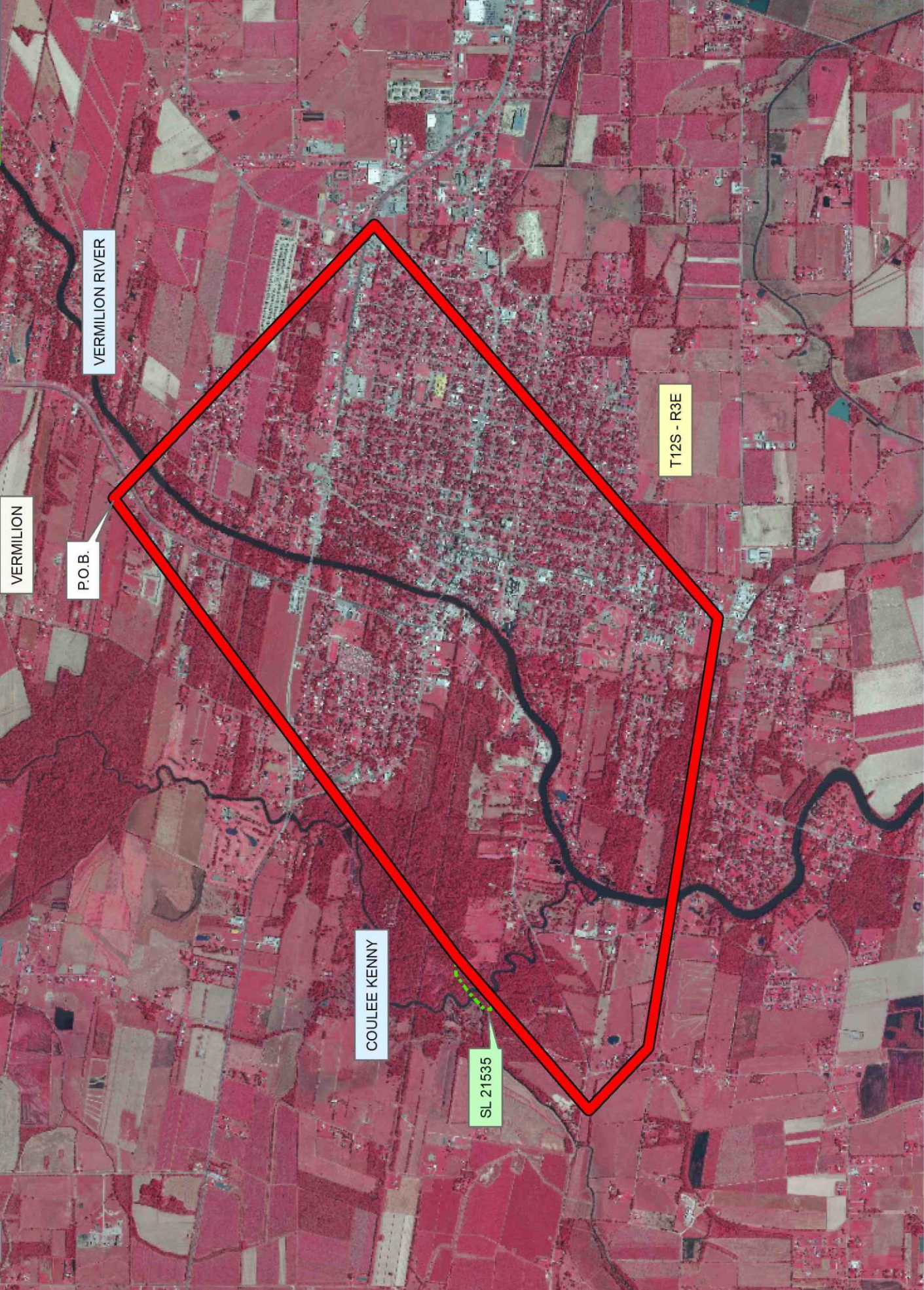
Bidder	Cash Payment	Price/Acre	Rental	Oil	Gas	Other



0 2,500 Feet

Legend

-  19090005
-  Active_Leases



Office of Mineral Resources, Acres: 88 Tract Number: 45189