

TRACT 45350 - Caddo Parish, Louisiana

All of the lands now or formerly constituting the beds and bottoms of all water bodies of every nature and description as to which title is vested in the State of Louisiana, together with all islands arising therein and other lands formed by accretion or by reliction, where allowed by law, excepting tax adjudicated lands, and not presently under mineral lease on September 9, 2020, situated in Caddo Parish, Louisiana, and more particularly described as follows: Beginning at a point having Coordinates of X = 1,587,088.07 and Y = 659,210.32; thence West 18,480.00 feet to a point having Coordinates of X = 1,568,608.07 and Y = 659,210.32; thence North 10,545.48 feet to a point having Coordinates of X = 1,568,608.07 and Y = 669,755.80 and being on the south boundary line of State Lease No. 21836; thence South 88 degrees 49 minutes 22 seconds East 842.11 feet to the southeast corner of State Lease No. 21836 and having Coordinates of X = 1,569,450.00 and Y = 669,738.50; thence South 5,281.52 feet along the west line of State Lease No. 21828 to a point being the southwest corner of State Lease No. 21828 and having Coordinates of X = 1,569,450.00 and Y = 664,456.98; thence South 88 degrees 45 minutes 27 seconds East 4,283.16 feet along the south line of State Lease No. 21828 to a point being the southeast corner of State Lease No. 21828 and having Coordinates of X = 1,573,732.15 and Y = 664,364.11; thence North 01 degrees 33 minutes 54 seconds East 5,313.90 feet along the east line of State Lease No. 21828 to a point being the northeast corner of State Lease No. 21828 and having Coordinates of X = 1,573,877.28 and Y = 669,676.03; thence North 88 degrees 55 minutes 37 seconds West 4,428.06 feet along the north line of State Lease No. 21828 to a point being the Northwest corner of State Lease No. 21828 and having Coordinates of X = 1,569,450.00 and Y = 669,758.96; thence North 591.04 feet along the East line of State Lease No. 21836 to a point being the Southwest corner of State Lease No. 21837 and having Coordinates of X = 1,569,450.00 and Y = 670,350.00; thence East 5,000.00 feet along the south line of State Lease No. 21837 to a point being the south corner of State Lease No. 21837 and having Coordinates of X = 1,574,450.00 and Y = 670,350.00; thence South 656.12 feet along the boundary line of State Lease No. 21837 to a point being the Northwest corner of State Lease No. 21860 and having Coordinates of X = 1,574,450.00 and Y = 669,693.88; thence South 5,305.65 feet along the west boundary line of State Lease No. 21860 to a point being the Southwest corner of State Lease No. 21860 and having Coordinates of X = 1,574,450.00 and Y = 664,388.23; thence South 89 degrees 19 minutes 19 seconds East 9,691.89 feet along the south line of State Lease No. 21860 to a point being the Southeast corner of State Lease No. 21860 and having Coordinates of X = 1,584,141.21 and Y = 664,273.54; thence North 00 degrees 17 minutes 45 seconds East 6,974.78 feet along the east line of State Lease No. 21860 to a point being the Northeast corner of State Lease No. 21860 and in the south line of Operating Agreement No. A0224 and having Coordinates of X = 1,584,177.22 and Y = 671,248.14; thence South 89 degrees 54 minutes 20 seconds East 953.23 feet along the south line of Operating Agreement No. A0224 to a point being the southeast corner of Operating Agreement No. A0224; thence North 00 degrees 01 minute 46 seconds West 79.81 feet along the east line of Operating Agreement No. A0224 to a point being the Southwest corner of Operating Agreement No. A0275; thence

South 89 degrees 22 minutes 27 seconds East 1,957.78 feet along the south line of Operating Agreement No. A0275 to a point in the south line of Operating Agreement No. A0275; thence South approximately 12,095 feet to the point of beginning, containing approximately **410 acres**, all as more particularly outlined on a plat on file in the Office of Mineral Resources, Department of Natural Resources. All bearings, distances and coordinates are based on Louisiana Coordinate System of 1927, (North or South Zone), where applicable.

NOTE: The above description of the Tract nominated for lease has been provided and corrected, where required, exclusively by the nomination party. Any mineral lease selected from this Tract and awarded by the Louisiana State Mineral and Energy Board shall be without warranty of any kind, either express, implied, or statutory, including, but not limited to, the implied warranties of merchantability and fitness for a particular purpose. Should the mineral lease awarded by the Louisiana State Mineral and Energy Board be subsequently modified, cancelled or abrogated due to the existence of conflicting leases, operating agreements, private claims or other future obligations or conditions which may affect all or any portion of the leased Tract, it shall not relieve the Lessee of the obligation to pay any bonus due thereon to the Louisiana State Mineral and Energy Board, nor shall the Louisiana State Mineral and Energy Board be obligated to refund any consideration paid by the Lessor prior to such modification, cancellation, or abrogation, including, but not limited to, bonuses, rentals and royalties.

NOTE: Lessee agrees not to erect any derrick, tank, warehouse or other equipment or structure on the leased premises nor shall lessee interfere in any manner, with lessor's use of the property. Lessee shall have, however, the complete right to drill for, produce, extract and recover the minerals in and beneath said land by drilling or other operations conducted from the surface of other lands or by the pooling or unitization of the leased premises with other land, lease or leases in the area.

Applicant: GLENGARRY ENERGY SERVICES

Bidder	Cash Payment	Price/Acre	Rental	Oil	Gas	Other

Legend

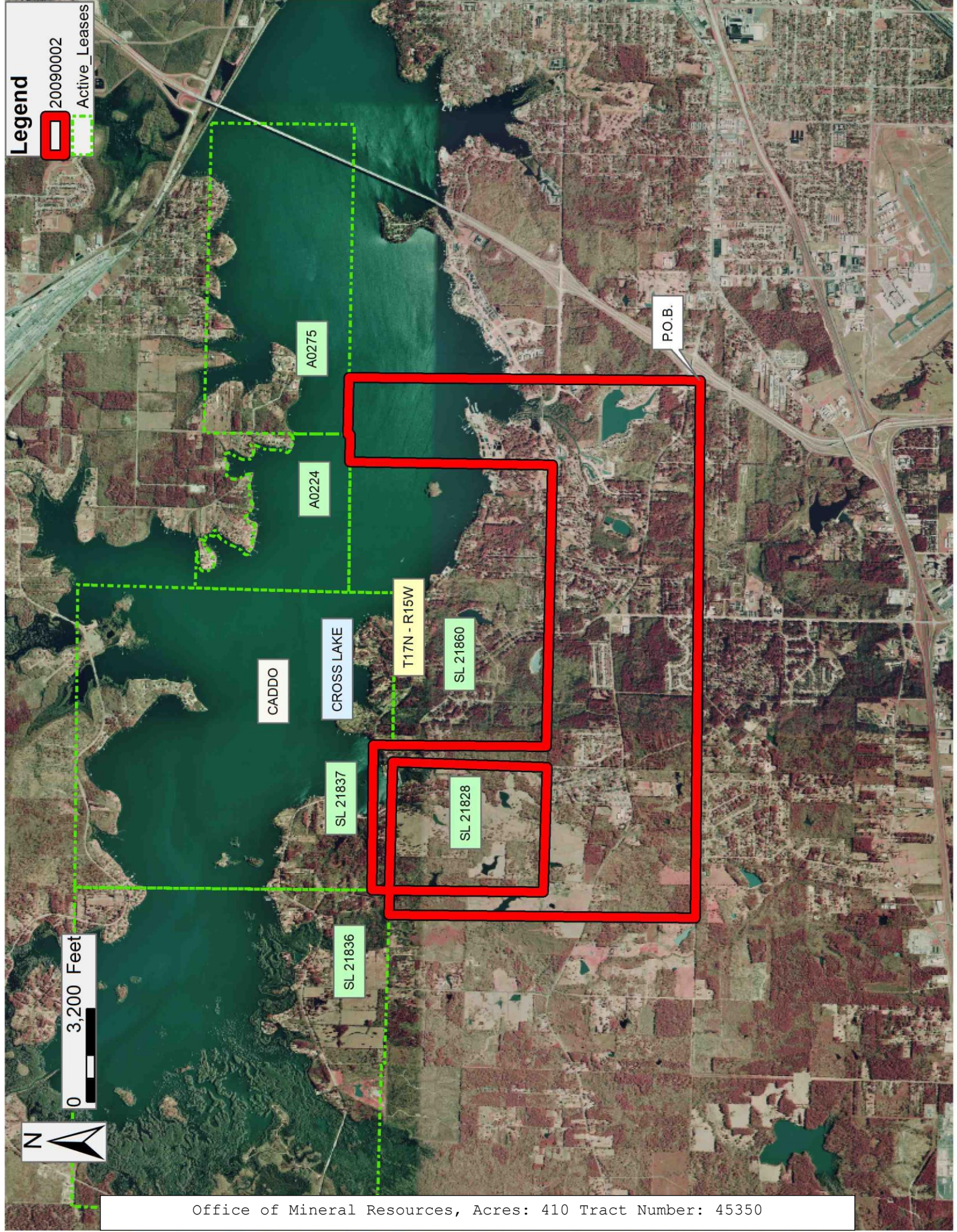
20090002

Active_Leases



0 3,200 Feet

Office of Mineral Resources, Acres: 410 Tract Number: 45350



TRACT 45351 - Caddo Parish, Louisiana

All of the lands now or formerly constituting the beds and bottoms of all water bodies of every nature and description as to which title is vested in the State of Louisiana, together with all islands arising therein and other lands formed by accretion or by reliction, where allowed by law, excepting tax adjudicated lands, and not presently under mineral lease on September 9, 2020, situated in Caddo Parish, Louisiana, and more particularly described as follows: Beginning at a point having Coordinates of X = 1,587,088.07 and Y = 659,210.32; thence North approximately 12,095 feet to a point on the south line of Operating Agreement No. A0275; thence North 12,094.76 feet to a point on the south line of Operating Agreement No. A0275; thence along the south line of Operating Agreement No. A0275 South 89 degrees 22 minutes 27 seconds East 8,705.52 feet to a point being the southeast corner of Operating Agreement No. A0275; thence along the east line of Operating Agreement No. A0275 North 00 degrees 10 minutes 14 seconds West 1,392.74 feet to a point on the East line of Operating Agreement No. A0275; thence along the east line of Operating Agreement No. A0275 North 00 degrees 04 minutes 30 seconds East 1,813.98 feet to a point in the east line of Operating Agreement No. A0275; thence East approximately 9,777 feet to a point having Coordinates of X = 1,605,568.07 and Y = 674,416.69; thence South 15,206.38 feet to a point having Coordinates of X = 1,605,568.07 and Y = 659,210.32; thence West 18,480.00 feet to the point of beginning, (This tract includes only waterbottoms claimed and owned by the state and specifically excludes any land which the state may claim or own and to which the mineral rights are vested in the state), containing approximately **1,397 acres**, all as more particularly outlined on a plat on file in the Office of Mineral Resources, Department of Natural Resources. All bearings, distances and coordinates are based on Louisiana Coordinate System of 1927, (North or South Zone), where applicable.

NOTE: The above description of the Tract nominated for lease has been provided and corrected, where required, exclusively by the nomination party. Any mineral lease selected from this Tract and awarded by the Louisiana State Mineral and Energy Board shall be without warranty of any kind, either express, implied, or statutory, including, but not limited to, the implied warranties of merchantability and fitness for a particular purpose. Should the mineral lease awarded by the Louisiana State Mineral and Energy Board be subsequently modified, cancelled or abrogated due to the existence of conflicting leases, operating agreements, private claims or other future obligations or conditions which may affect all or any portion of the leased Tract, it shall not relieve the Lessee of the obligation to pay any bonus due thereon to the Louisiana State Mineral and Energy Board, nor shall the Louisiana State Mineral and Energy Board be obligated to refund any consideration paid by the Lessor prior to such modification, cancellation, or abrogation, including, but not limited to, bonuses, rentals and royalties.

NOTE: Lessee agrees not to erect any derrick, tank, warehouse or other equipment or structure on the leased premises nor shall lessee interfere in any manner, with lessor's use of the property. Lessee shall have, however,

the complete right to drill for, produce, extract and recover the minerals in and beneath said land by drilling or other operations conducted from the surface of other lands or by the pooling or unitization of the leased premises with other land, lease or leases in the area.

Applicant: GLENGARRY ENERGY SERVICES

Bidder	Cash Payment	Price/Acre	Rental	Oil	Gas	Other

Legend



20090001



Active_Leases



0 3,000 Feet

Office of Mineral Resources, Acres: 1397 Tract Number: 45351

CADDO

T18N - R14W

A0275

CROSS LAKE

T17N - R14W

P.O.B.