

TRACT 45359 - Plaquemines Parish, Louisiana

All of the lands now or formerly constituting the beds and bottoms of all water bodies of every nature and description as to which title is vested in the State of Louisiana, together with all islands arising therein and other lands formed by accretion or by reliction, where allowed by law, excepting tax adjudicated lands, and not presently under mineral lease on November 18, 2020, situated in Plaquemines Parish, Louisiana, and more particularly described as follows: Beginning at a point having Coordinates of X = 2,460,678.28 and Y = 268,041.93; thence North 89 degrees 15 minutes 00 seconds East 8,905.76 feet to a point having Coordinates of X = 2,469,583.28 and Y = 268,158.50; thence South 12,231.25 feet to a point having Coordinates of X = 2,469,583.28 and Y = 255,927.24; thence West 8,905.00 feet to a point having Coordinates of X = 2,460,678.28 and Y = 255,927.24; thence North 12,114.69 feet to the point of beginning containing approximately **2,467 acres**, all as more particularly outlined on a plat on file in the Office of Mineral Resources, Department of Natural Resources. All bearings, distances and coordinates are based on Louisiana Coordinate System of 1927, (North or South Zone), where applicable.

NOTE: The above description of the Tract nominated for lease has been provided and corrected, where required, exclusively by the nomination party. Any mineral lease selected from this Tract and awarded by the Louisiana State Mineral and Energy Board shall be without warranty of any kind, either express, implied, or statutory, including, but not limited to, the implied warranties of merchantability and fitness for a particular purpose. Should the mineral lease awarded by the Louisiana State Mineral and Energy Board be subsequently modified, cancelled or abrogated due to the existence of conflicting leases, operating agreements, private claims or other future obligations or conditions which may affect all or any portion of the leased Tract, it shall not relieve the Lessee of the obligation to pay any bonus due thereon to the Louisiana State Mineral and Energy Board, nor shall the Louisiana State Mineral and Energy Board be obligated to refund any consideration paid by the Lessor prior to such modification, cancellation, or abrogation, including, but not limited to, bonuses, rentals and royalties.

NOTE: The State of Louisiana does hereby reserve, and this lease shall be subject to, the imprescriptible right of surface use in the nature of a servitude in favor of the Department of Natural Resources, including its Offices and Commissions, for the sole purpose of implementing, constructing, servicing and maintaining approved coastal zone management and/or restoration projects. Utilization of any and all rights derived under this lease by the mineral lessee, its agents, successors or assigns, shall not interfere with nor hinder the reasonable surface use by the Department of Natural Resources, its Offices or Commissions, as herein above reserved.

Applicant: CYPRESS ENERGY CORPORATION

Bidder	Cash Payment	Price/Acre	Rental	Oil	Gas	Other



0 2,000 Feet

P.O.B.

PLAQUEMINES

Legend



20110002

BARATARIA BAY



TRACT 45360 - Plaquemines Parish, Louisiana

All of the lands now or formerly constituting the beds and bottoms of all water bodies of every nature and description as to which title is vested in the State of Louisiana, together with all islands arising therein and other lands formed by accretion or by reliction, where allowed by law, excepting tax adjudicated lands, and not presently under mineral lease on November 18, 2020, situated in Plaquemines Parish, Louisiana, and more particularly described as follows: Beginning at a point having Coordinates of X = 2,469,583.28 and Y = 268,158.50; thence North 89 degrees 14 minutes 38 seconds East 3,320.87 feet to the Southwest corner of State Lease No. 2028, as amended having Coordinates of X = 2,472,903.86 and Y = 268,202.32; thence North 89 degrees 15 minutes 00 seconds East 7,209.98 feet along the southern boundary of said State Lease No. 2028 to a point of intersection with the west boundary of State Lease No. 2104, as amended having Coordinates of X = 2,480,113.22 and Y = 268,296.69; thence along the boundaries of said State Lease No. 2104 the following courses: South 00 degrees 45 minutes 00 seconds East 1,208.31 feet to a point having Coordinates of X = 2,480,129.04 and Y = 267,088.49, South 89 degrees 15 minutes 00 seconds West 5,300.00 feet to a point having Coordinates of X = 2,474,829.50 and Y = 267,019.11, South 00 degrees 45 minutes 00 seconds East 6,600.00 feet to a point having Coordinates of X = 2,474,915.89 and Y = 260,419.68 and North 89 degrees 15 minutes 00 seconds East 3,748.13 feet to a point having Coordinates of X = 2,478,663.69 and Y = 260,468.73; thence South 01 degrees 25 minutes 20 seconds East 4,542.89 feet to a point having Coordinates of X = 2,478,776.46 and Y = 255,927.24; thence West 9,193.18 feet to a point having Coordinates of X = 2,469,583.28 and Y = 255,927.24; thence North 12,231.25 feet to the point of beginning, **LESS AND EXCEPT** any right, title, and interest in lands owned by and not under lease from the State of Louisiana, on behalf of the Plaquemines Parish School Board, situated in Section 16, Township 20 South, Range 26 East, Plaquemines Parish, Louisiana, contained within the above described tract, containing approximately **2,014 acres**, all as more particularly outlined on a plat on file in the Office of Mineral Resources, Department of Natural Resources. All bearings, distances and coordinates are based on Louisiana Coordinate System of 1927, (North or South Zone), where applicable.

NOTE: The above description of the Tract nominated for lease has been provided and corrected, where required, exclusively by the nomination party. Any mineral lease selected from this Tract and awarded by the Louisiana State Mineral and Energy Board shall be without warranty of any kind, either express, implied, or statutory, including, but not limited to, the implied warranties of merchantability and fitness for a particular purpose. Should the mineral lease awarded by the Louisiana State Mineral and Energy Board be subsequently modified, cancelled or abrogated due to the existence of conflicting leases, operating agreements, private claims or other future obligations or conditions which may affect all or any portion of the leased Tract, it shall not relieve the Lessee of the obligation to pay any bonus due thereon to the Louisiana State Mineral and Energy Board, nor shall the Louisiana State Mineral and Energy Board be obligated to refund any

consideration paid by the Lessor prior to such modification, cancellation, or abrogation, including, but not limited to, bonuses, rentals and royalties.

NOTE: The State of Louisiana does hereby reserve, and this lease shall be subject to, the imprescriptible right of surface use in the nature of a servitude in favor of the Department of Natural Resources, including its Offices and Commissions, for the sole purpose of implementing, constructing, servicing and maintaining approved coastal zone management and/or restoration projects. Utilization of any and all rights derived under this lease by the mineral lessee, its agents, successors or assigns, shall not interfere with nor hinder the reasonable surface use by the Department of Natural Resources, its Offices or Commissions, as herein above reserved.

Applicant: CYPRESS ENERGY CORPORATION

Bidder	Cash Payment	Price/Acre	Rental	Oil	Gas	Other

Legend



20110003

Active_Leases



0 2,000 Feet

P.O.B.

SL 2028

PLAQUEMINES

BARATARIA BAY

SL 2104

TRACT 45361 - Plaquemines Parish, Louisiana

All of the lands now or formerly constituting the beds and bottoms of all water bodies of every nature and description as to which title is vested in the State of Louisiana, together with all islands arising therein and other lands formed by accretion or by reliction, where allowed by law, excepting tax adjudicated lands, and not presently under mineral lease on November 18, 2020, situated in Plaquemines Parish, Louisiana, and more particularly described as follows: Beginning at a point having Coordinates of X = 2,460,678.28 and Y = 255,927.24; thence East 8,905.00 feet to a point having Coordinates of X = 2,469,583.28 and Y = 255,927.24; thence South 12,056.92 feet to a point having Coordinates of X = 2,469,583.28 and Y = 243,870.32; thence West 8,905.00 feet to a point having Coordinates of X = 2,460,678.28 and Y = 243,870.32; thence North 12,056.92 feet to the point of beginning containing approximately **2,443 acres**, all as more particularly outlined on a plat on file in the Office of Mineral Resources, Department of Natural Resources. All bearings, distances and coordinates are based on Louisiana Coordinate System of 1927, (North or South Zone), where applicable.

NOTE: The above description of the Tract nominated for lease has been provided and corrected, where required, exclusively by the nomination party. Any mineral lease selected from this Tract and awarded by the Louisiana State Mineral and Energy Board shall be without warranty of any kind, either express, implied, or statutory, including, but not limited to, the implied warranties of merchantability and fitness for a particular purpose. Should the mineral lease awarded by the Louisiana State Mineral and Energy Board be subsequently modified, cancelled or abrogated due to the existence of conflicting leases, operating agreements, private claims or other future obligations or conditions which may affect all or any portion of the leased Tract, it shall not relieve the Lessee of the obligation to pay any bonus due thereon to the Louisiana State Mineral and Energy Board, nor shall the Louisiana State Mineral and Energy Board be obligated to refund any consideration paid by the Lessor prior to such modification, cancellation, or abrogation, including, but not limited to, bonuses, rentals and royalties.

NOTE: The State of Louisiana does hereby reserve, and this lease shall be subject to, the imprescriptible right of surface use in the nature of a servitude in favor of the Department of Natural Resources, including its Offices and Commissions, for the sole purpose of implementing, constructing, servicing and maintaining approved coastal zone management and/or restoration projects. Utilization of any and all rights derived under this lease by the mineral lessee, its agents, successors or assigns, shall not interfere with nor hinder the reasonable surface use by the Department of Natural Resources, its Offices or Commissions, as herein above reserved.

Applicant: CYPRESS ENERGY CORPORATION

Bidder	Cash Payment	Price/Acre	Rental	Oil	Gas	Other

Legend

20110004



BARATARIA BAY

PLAQUEMINES



P.O.B.

0 2,000 Feet



TRACT 45362 - Plaquemines Parish, Louisiana

All of the lands now or formerly constituting the beds and bottoms of all water bodies of every nature and description as to which title is vested in the State of Louisiana, together with all islands arising therein and other lands formed by accretion or by reliction, where allowed by law, excepting tax adjudicated lands, and not presently under mineral lease on November 18, 2020, situated in Plaquemines Parish, Louisiana, and more particularly described as follows: Beginning at a point having Coordinates of X = 2,469,583.28 and Y = 255,927.24; thence East 9,193.18 feet to a point having Coordinates of X = 2,478,776.46 and Y = 255,927.24; thence South 01 degrees 25 minutes 20 seconds East 9,626.49 feet to a point having Coordinates of X = 2,479,015.41 and Y = 246,303.72; thence South 2,433.40 feet to a point having Coordinates of X = 2,479,015.41 and Y = 243,870.32; thence West 9,432.13 feet to a point having Coordinates of X = 2,469,583.28 and Y = 243,870.32; thence North 12,056.92 feet to the point of beginning; **LESS AND EXCEPT** all that portion of State Lease No. 21966 which lies entirely within the above described tract, being more fully described as follows: Commencing at a point being the point of beginning of the above described nominated tract having Coordinates of X = 2,469,583.28 and Y = 255,927.24; thence South 47 degrees 28 minutes 11 seconds East 3,207.56 feet to the point of beginning of said State Lease No. 21966 having Coordinates of X = 2,471,947.00 and Y = 253,759.00; thence North 82 degrees 16 minutes 39 seconds East 4,972.56 feet to a point having Coordinates of X = 2,476,874.47 and Y = 254,427.19; thence South 09 degrees 05 minutes 09 seconds East 4,151.27 feet to a point having Coordinates of X = 2,477,530.00 and Y = 250,328.00; thence South 22 degrees 52 minutes 03 seconds West 1,773.15 feet to a point having Coordinates of X = 2,476,840.95 and Y = 248,694.21; thence West 2,825.27 feet to a point having Coordinates of X = 2,474,015.69 and Y = 248,694.21; thence North 22 degrees 13 minutes 02 seconds 5,470.98 feet to its point of beginning, containing approximately 530 acres. The above described tracts contains approximately **1,970 acres**, all as more particularly outlined on a plat on file in the Office of Mineral Resources, Department of Natural Resources. All bearings, distances and coordinates are based on Louisiana Coordinate System of 1927, (North or South Zone), where applicable.

NOTE: The above description of the Tract nominated for lease has been provided and corrected, where required, exclusively by the nomination party. Any mineral lease selected from this Tract and awarded by the Louisiana State Mineral and Energy Board shall be without warranty of any kind, either express, implied, or statutory, including, but not limited to, the implied warranties of merchantability and fitness for a particular purpose. Should the mineral lease awarded by the Louisiana State Mineral and Energy Board be subsequently modified, cancelled or abrogated due to the existence of conflicting leases, operating agreements, private claims or other future obligations or conditions which may affect all or any portion of the leased Tract, it shall not relieve the Lessee of the obligation to pay any bonus due thereon to the Louisiana State Mineral and Energy Board, nor shall the Louisiana State Mineral and Energy Board be obligated to refund any consideration paid by the Lessor prior to such modification, cancellation, or abrogation, including, but not limited to, bonuses, rentals and royalties.

NOTE: The State of Louisiana does hereby reserve, and this lease shall be subject to, the imprescriptible right of surface use in the nature of a servitude in favor of the Department of Natural Resources, including its Offices and Commissions, for the sole purpose of implementing, constructing, servicing and maintaining approved coastal zone management and/or restoration projects. Utilization of any and all rights derived under this lease by the mineral lessee, its agents, successors or assigns, shall not interfere with nor hinder the reasonable surface use by the Department of Natural Resources, its Offices or Commissions, as herein above reserved.

Applicant: CYPRESS ENERGY CORPORATION

Bidder	Cash Payment	Price/Acre	Rental	Oil	Gas	Other

Legend

- 20110005
- Active_Leases

BARATARIA BAY

PLAQUEMINES

SL 21966

P.O.B.

0 2,000 Feet



TRACT 45363 - Portion of Block 1, West Delta Area, Plaquemines Parish, Louisiana

All of the lands now or formerly constituting the beds and bottoms of all water bodies of every nature and description as to which title is vested in the State of Louisiana, together with all islands arising therein and other lands formed by accretion or by reliction, where allowed by law, excepting tax adjudicated lands, and not presently under mineral lease on November 18, 2020, situated in Plaquemines Parish, Louisiana, and more particularly described as follows: Beginning at a point having Coordinates of X = 2,472,854.33 and Y = 243,870.32; thence East 6,161.08 feet to a point having Coordinates of X = 2,479,015.41 and Y = 243,870.32; thence North 2,433.40 feet to a point having Coordinates of X = 2,479,015.41 and Y = 246,303.72; thence North 87 degrees 56 minutes 41 seconds East 6,993.17 feet to a point having Coordinates of X = 2,486,004.08 and Y = 246,554.53; thence South 9,459.40 feet to a point having Coordinates of X = 2,486,004.08 and Y = 237,095.13; thence West 13,149.75 feet to a point having Coordinates of X = 2,472,854.33 and Y = 237,095.13; thence North 6,775.19 feet to the point of beginning containing approximately **2,377 acres**, all as more particularly outlined on a plat on file in the Office of Mineral Resources, Department of Natural Resources. All bearings, distances and coordinates are based on Louisiana Coordinate System of 1927, (North or South Zone), where applicable.

NOTE: The above description of the Tract nominated for lease has been provided and corrected, where required, exclusively by the nomination party. Any mineral lease selected from this Tract and awarded by the Louisiana State Mineral and Energy Board shall be without warranty of any kind, either express, implied, or statutory, including, but not limited to, the implied warranties of merchantability and fitness for a particular purpose. Should the mineral lease awarded by the Louisiana State Mineral and Energy Board be subsequently modified, cancelled or abrogated due to the existence of conflicting leases, operating agreements, private claims or other future obligations or conditions which may affect all or any portion of the leased Tract, it shall not relieve the Lessee of the obligation to pay any bonus due thereon to the Louisiana State Mineral and Energy Board, nor shall the Louisiana State Mineral and Energy Board be obligated to refund any consideration paid by the Lessor prior to such modification, cancellation, or abrogation, including, but not limited to, bonuses, rentals and royalties.

NOTE: The State of Louisiana does hereby reserve, and this lease shall be subject to, the imprescriptible right of surface use in the nature of a servitude in favor of the Department of Natural Resources, including its Offices and Commissions, for the sole purpose of implementing, constructing, servicing and maintaining approved coastal zone management and/or restoration projects. Utilization of any and all rights derived under this lease by the mineral lessee, its agents, successors or assigns, shall not interfere with nor hinder the reasonable surface use by the Department of Natural Resources, its Offices or Commissions, as herein above reserved.

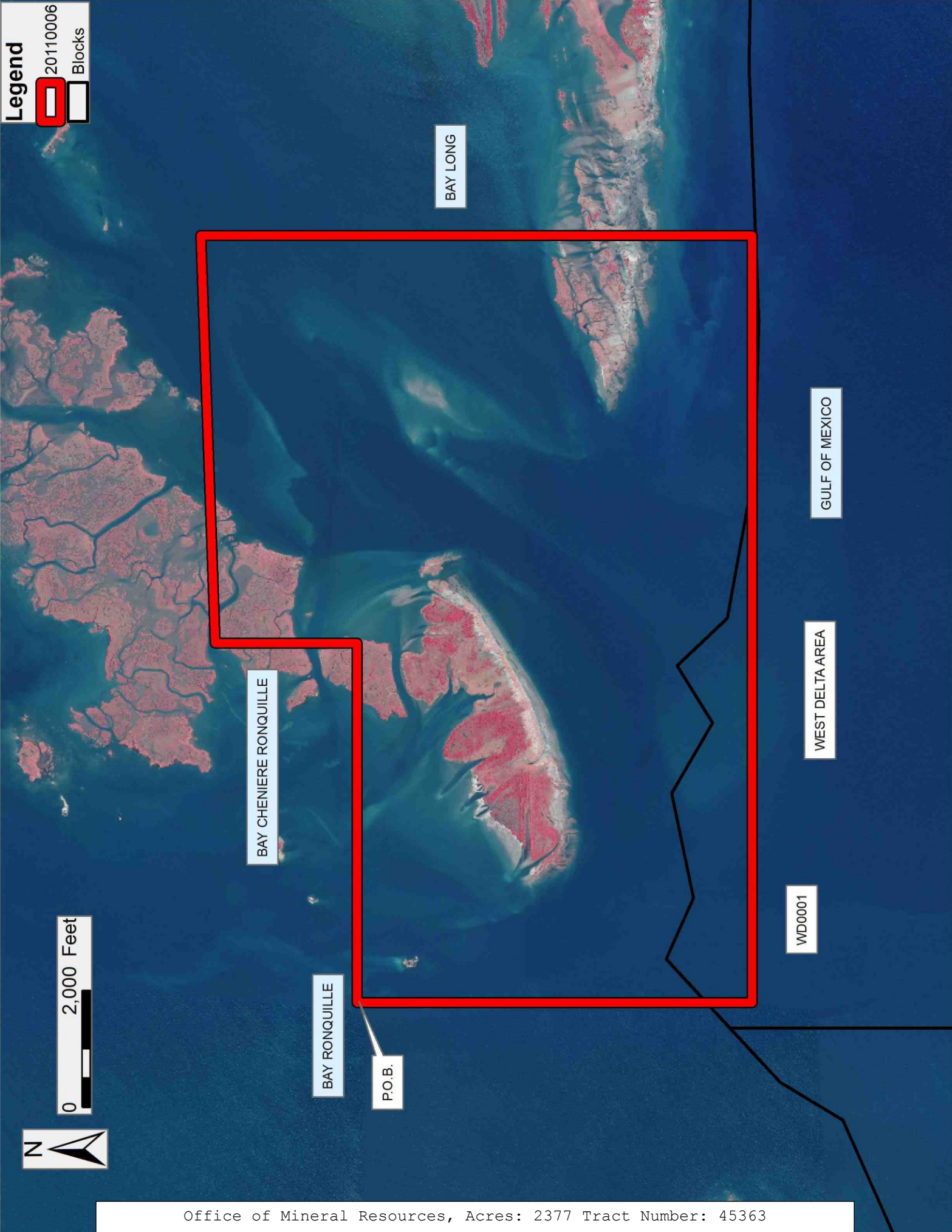
Applicant: CYPRESS ENERGY CORPORATION

Bidder	Cash Payment	Price/Acre	Rental	Oil	Gas	Other

Legend



0 2,000 Feet



BAY LONG

BAY CHENIERE RONQUILLE

BAY RONQUILLE

P.O.B.

GULF OF MEXICO

WEST DELTA AREA

WD0001

TRACT 45364 - Portion of Blocks 116, and 117, South Timbalier Area, Revised, Terrebonne Parish, Louisiana

All of the lands now or formerly constituting the beds and bottoms of all water bodies of every nature and description as to which title is vested in the State of Louisiana, together with all islands arising therein and other lands formed by accretion or by reliction, where allowed by law, excepting tax adjudicated lands, and not presently under mineral lease on November 18, 2020, situated in Terrebonne Parish, Louisiana, and more particularly described as follows: Beginning at a point on the North line of Block 117, South Timbalier Area, Revised, having Coordinates of X = 2,243,834.97 and Y = 179,372.07; thence East 18,243.69 feet to a point on the East line of Block 116, South Timbalier Area, Revised, having Coordinates of X = 2,262,078.66 and Y = 179,372.07; thence South 3,053.34 feet along said East line to a point on the most Northern boundary of State Lease No. 1247, as amended, having Coordinates of X = 2,262,078.66 and Y = 176,318.73; thence along the boundary of said State Lease No. 1247 the following courses and distances: West 470.62 feet to a point having Coordinates of X = 2,261,608.04 and Y = 176,318.73, South 1,223.25 feet to a point having Coordinates of X = 2,261,608.04 and Y = 175,095.48, West 3,400.00 feet to a point having Coordinates of X = 2,258,208.04 and Y = 175,095.48, South 200.00 feet to a point having Coordinates of X = 2,258,208.04 and Y = 174,895.48, West 4,050.00 feet to a point having Coordinates of X = 2,254,158.04 and Y = 174,895.48, South 2,650.00 feet to a point having Coordinates of X = 2,254,158.04 and Y = 172,245.48, and West 350.00 feet to a point having Coordinates of X = 2,253,808.04 and Y = 172,245.48; thence West 9,973.07 feet to a point having Coordinates of X = 2,243,834.97 and Y = 172,245.48; thence North 7,126.59 feet to the point of beginning, containing approximately **2,471.90 acres**, all as more particularly outlined on a plat on file in the Office of Mineral Resources, Department of Natural Resources. All bearings, distances and coordinates are based on Louisiana Coordinate System of 1927, (North or South Zone), where applicable.

NOTE: The above description of the Tract nominated for lease has been provided and corrected, where required, exclusively by the nomination party. Any mineral lease selected from this Tract and awarded by the Louisiana State Mineral and Energy Board shall be without warranty of any kind, either express, implied, or statutory, including, but not limited to, the implied warranties of merchantability and fitness for a particular purpose. Should the mineral lease awarded by the Louisiana State Mineral and Energy Board be subsequently modified, cancelled or abrogated due to the existence of conflicting leases, operating agreements, private claims or other future obligations or conditions which may affect all or any portion of the leased Tract, it shall not relieve the Lessee of the obligation to pay any bonus due thereon to the Louisiana State Mineral and Energy Board, nor shall the Louisiana State Mineral and Energy Board be obligated to refund any consideration paid by the Lessor prior to such modification, cancellation, or abrogation, including, but not limited to, bonuses, rentals and royalties.

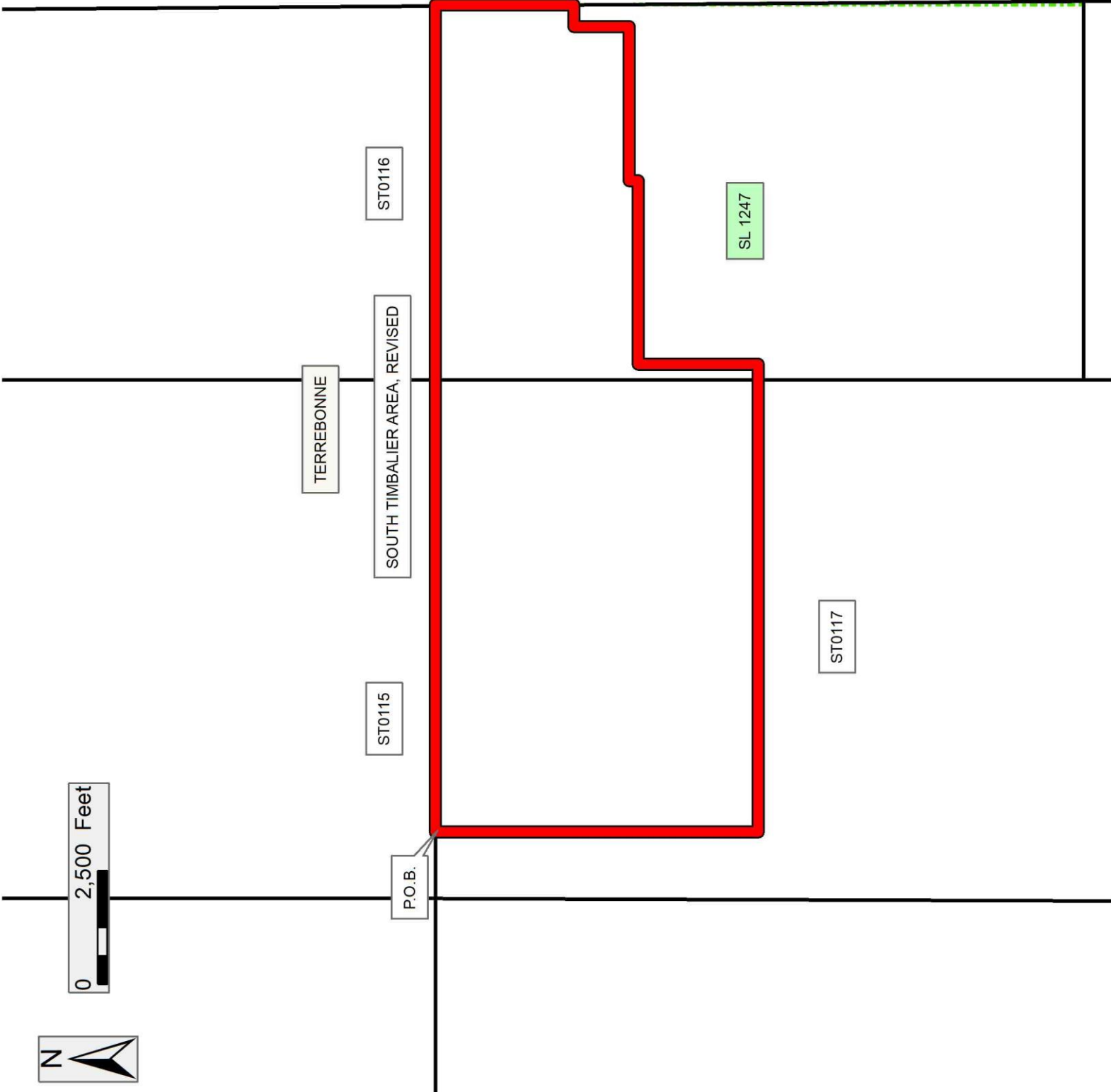
NOTE: The State of Louisiana does hereby reserve, and this lease shall be subject to, the imprescriptible right of surface use in the nature of a servitude in favor of the Department of Natural Resources, including its Offices and Commissions, for the sole purpose of implementing, constructing, servicing and maintaining approved coastal zone management and/or restoration projects. Utilization of any and all rights derived under this lease by the mineral lessee, its agents, successors or assigns, shall not interfere with nor hinder the reasonable surface use by the Department of Natural Resources, its Offices or Commissions, as herein above reserved.

Applicant: LOUISIANA BAYOU OIL & GAS CO.

Bidder	Cash Payment	Price/Acre	Rental	Oil	Gas	Other

Legend

- 20110012
- Blocks
- Active_Leases



Office of Mineral Resources, Acres: 2471.9 Tract Number: 45364

TRACT 45365 - Portion of Blocks 117, and 118, South Timbalier Area, Revised, Terrebonne Parish, Louisiana

All of the lands now or formerly constituting the beds and bottoms of all water bodies of every nature and description as to which title is vested in the State of Louisiana, together with all islands arising therein and other lands formed by accretion or by reliction, where allowed by law, excepting tax adjudicated lands, and not presently under mineral lease on November 18, 2020, situated in Terrebonne Parish, Louisiana, and more particularly described as follows: Beginning at a point on the West line of Block 117, South Timbalier Area, Revised, having Coordinates of X = 2,242,289.87 and Y = 172,245.48; thence East 11,518.17 feet to a point on the East line of said Block 117, also being a point on the boundary of State Lease No. 1247, as amended, having Coordinates of X = 2,253,808.04 and Y = 172,245.48; thence South 2,167.79 feet along the boundary of said State Lease No. 1247, also being a point on the boundary of State Lease No. 2856, as amended, having Coordinates of X = 2,253,808.04 and Y = 170,077.69; thence along the boundary of said State Lease No. 2856, the following courses and distances: West 2,249.00 feet to a point having Coordinates of X = 2,251,559.04 and Y = 170,077.69, and South 1,050.00 feet to a point on the boundary of State Lease No. 21849, having Coordinates of X = 2,251,559.04 and Y = 169,027.69; thence South 48 degrees 21 minutes 59 seconds West 3,010.40 feet to a point on the boundary of State Lease No. 21850 having Coordinates of X = 2,249,309.04 and Y = 167,027.69; thence along said boundary of said State Lease No. 21850 the following courses and distances: South 48 degrees 21 minutes 59 seconds West 2,073.83 feet to a point having Coordinates of X = 2,247,759.04 and Y = 165,649.91, South 4,687.11 feet to a point having Coordinates of X = 2,247,759.04 and Y = 160,962.80, and East 2,000.00 feet to a point on the boundary of said State Lease No. 2856 having Coordinates of X = 2,249,759.04 and Y = 160,962.80; thence South 500.00 feet along said boundary of said State Lease No. 2856 to a point having Coordinates of X = 2,249,759.04 and Y = 160,462.80; thence West 7,469.17 feet to the Southwest corner of said Block 117 having Coordinates of X = 2,242,289.87 and Y = 160,462.80; thence North 11,782.68 feet to the point of beginning, containing approximately **2,042.29 acres**, all as more particularly outlined on a plat on file in the Office of Mineral Resources, Department of Natural Resources. All bearings, distances and coordinates are based on Louisiana Coordinate System of 1927, (North or South Zone), where applicable.

NOTE: The above description of the Tract nominated for lease has been provided and corrected, where required, exclusively by the nomination party. Any mineral lease selected from this Tract and awarded by the Louisiana State Mineral and Energy Board shall be without warranty of any kind, either express, implied, or statutory, including, but not limited to, the implied warranties of merchantability and fitness for a particular purpose. Should the mineral lease awarded by the Louisiana State Mineral and Energy Board be subsequently modified, cancelled or abrogated due to the existence of conflicting leases, operating agreements, private claims or other future obligations or conditions which may affect all or any portion of the leased Tract, it shall not relieve the Lessee of the obligation to pay any bonus

due thereon to the Louisiana State Mineral and Energy Board, nor shall the Louisiana State Mineral and Energy Board be obligated to refund any consideration paid by the Lessor prior to such modification, cancellation, or abrogation, including, but not limited to, bonuses, rentals and royalties.

NOTE: The State of Louisiana does hereby reserve, and this lease shall be subject to, the imprescriptible right of surface use in the nature of a servitude in favor of the Department of Natural Resources, including its Offices and Commissions, for the sole purpose of implementing, constructing, servicing and maintaining approved coastal zone management and/or restoration projects. Utilization of any and all rights derived under this lease by the mineral lessee, its agents, successors or assigns, shall not interfere with nor hinder the reasonable surface use by the Department of Natural Resources, its Offices or Commissions, as herein above reserved.

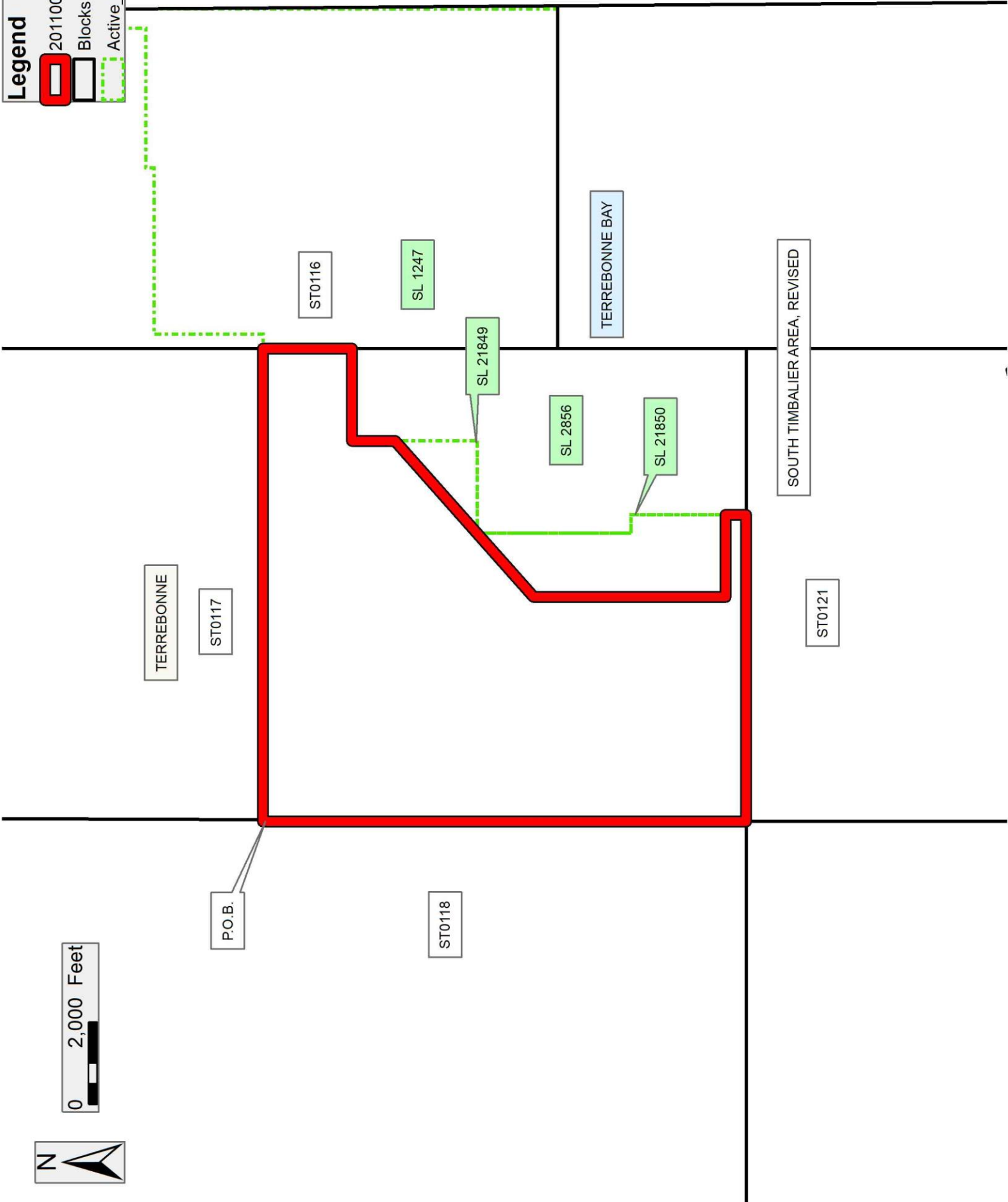
NOTE: It appears, according to our records, that a portion of this Tract is located within the restrictive safety fairway area as set out by the Corps of Engineers, U.S. Army and/or the restrictive anchorage area as set out by the U.S. Coast Guard.

Applicant: LOUISIANA BAYOU OIL & GAS CO.

Bidder	Cash Payment	Price/Acre	Rental	Oil	Gas	Other

Legend

- 20110013
- Blocks
- Active_Leases



TRACT 45366 - Portion of Blocks 121, and 122, South Timbalier Area, Revised, Terrebonne Parish, Louisiana

All of the lands now or formerly constituting the beds and bottoms of all water bodies of every nature and description as to which title is vested in the State of Louisiana, together with all islands arising therein and other lands formed by accretion or by reliction, where allowed by law, excepting tax adjudicated lands, and not presently under mineral lease on November 18, 2020, situated in Terrebonne Parish, Louisiana, and more particularly described as follows: Beginning at a point on the North line of Block 121, South Timbalier Area, Revised, having Coordinates of X = 2,247,759.04 and Y = 160,462.80; thence East 2,000.00 feet along said North line of said Block 121 to a point on the boundary of State Lease No. 2856, as amended, having Coordinates of X = 2,249,759.04 and Y = 160,462.80; thence East 4,049.00 feet along said boundary of said State Lease No. 2856, to a point on the Western boundary of State Lease No. 1249, as amended, also being the Northeast corner of said Block 121 having Coordinates of X = 2,253,808.04 and Y = 160,462.80; thence along the boundary of said State Lease No. 1249, the following courses and distances: South 6,424.38 feet to a point having Coordinates of X = 2,253,808.04 and Y = 154,038.42, East 20.42 feet to a point having Coordinates of X = 2,253,828.46 and Y = 154,038.42 and South 09 degrees 41 minutes 17 seconds East 810.36 feet to a point on the Louisiana Coastline, as decreed by the Supreme Court of the United States, as determined by a Special Master appointed therein, in litigation styled *United States v. State of Louisiana et al No. 9 Original*, in 1975, having Coordinates of X = 2,253,964.83 and Y = 153,239.62; thence along the boundaries of said Coastline the following courses and distances: Northwesterly on a straight line to a point having Coordinates of X = 2,253,306 and Y = 154,102 and Southwesterly on a straight line to a point having Coordinates of X = 2,247,759.04 and Y = 152,748.20; thence North 7,714.60 feet to the point of beginning, containing approximately **974.54 acres**, all as more particularly outlined on a plat on file in the Office of Mineral Resources, Department of Natural Resources. All bearings, distances and coordinates are based on Louisiana Coordinate System of 1927, (North or South Zone), where applicable.

NOTE: The above description of the Tract nominated for lease has been provided and corrected, where required, exclusively by the nomination party. Any mineral lease selected from this Tract and awarded by the Louisiana State Mineral and Energy Board shall be without warranty of any kind, either express, implied, or statutory, including, but not limited to, the implied warranties of merchantability and fitness for a particular purpose. Should the mineral lease awarded by the Louisiana State Mineral and Energy Board be subsequently modified, cancelled or abrogated due to the existence of conflicting leases, operating agreements, private claims or other future obligations or conditions which may affect all or any portion of the leased Tract, it shall not relieve the Lessee of the obligation to pay any bonus due thereon to the Louisiana State Mineral and Energy Board, nor shall the Louisiana State Mineral and Energy Board be obligated to refund any consideration paid by the Lessor prior to such modification, cancellation, or abrogation, including, but not limited to, bonuses, rentals and royalties.

NOTE: The State of Louisiana does hereby reserve, and this lease shall be subject to, the imprescriptible right of surface use in the nature of a servitude in favor of the Department of Natural Resources, including its Offices and Commissions, for the sole purpose of implementing, constructing, servicing and maintaining approved coastal zone management and/or restoration projects. Utilization of any and all rights derived under this lease by the mineral lessee, its agents, successors or assigns, shall not interfere with nor hinder the reasonable surface use by the Department of Natural Resources, its Offices or Commissions, as herein above reserved.

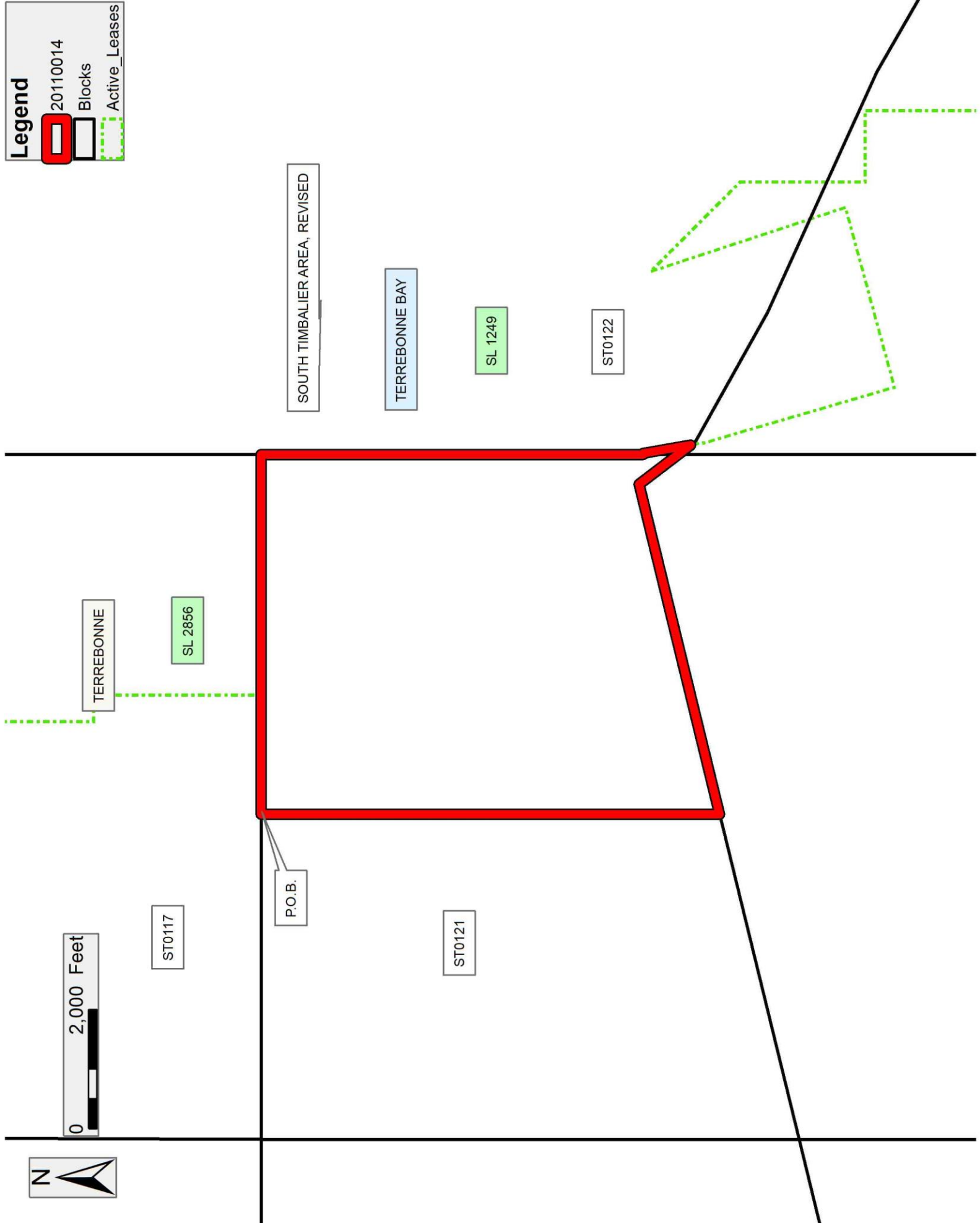
NOTE: It appears, according to our records, that a portion of this Tract is located within the restrictive safety fairway area as set out by the Corps of Engineers, U.S. Army and/or the restrictive anchorage area as set out by the U.S. Coast Guard.

Applicant: LOUISIANA BAYOU OIL & GAS CO.

Bidder	Cash Payment	Price/Acre	Rental	Oil	Gas	Other

Legend

- 20110014
- Blocks
- Active_Leases



Office of Mineral Resources, Acres: 974.54 Tract Number: 45366