

TRACT 45372 - Bossier Parish, Louisiana

The mineral rights only on and under all lands now or formerly constituting the beds and bottoms of all water bodies of every nature and description, and under all other lands owned by and not presently under mineral lease as of November 18, 2020, from the State of Louisiana situated in Bossier Parish, Louisiana, and being more fully described as follows: The East half of the East half of Section 36, located in Township 16 North, Range 11 West, Bossier Parish, Louisiana, containing approximately **90.00 acres**, all as more particularly outlined on a plat on file in the Office of Mineral Resources, Department of Natural Resources. All bearings, distances and coordinates are based on Louisiana Coordinate System of 1927, (North or South Zone), where applicable.

NOTE: The above description of the Tract nominated for lease has been provided and corrected, where required, exclusively by the nomination party. Any mineral lease selected from this Tract and awarded by the Louisiana State Mineral and Energy Board shall be without warranty of any kind, either express, implied, or statutory, including, but not limited to, the implied warranties of merchantability and fitness for a particular purpose. Should the mineral lease awarded by the Louisiana State Mineral and Energy Board be subsequently modified, cancelled or abrogated due to the existence of conflicting leases, operating agreements, private claims or other future obligations or conditions which may affect all or any portion of the leased Tract, it shall not relieve the Lessee of the obligation to pay any bonus due thereon to the Louisiana State Mineral and Energy Board, nor shall the Louisiana State Mineral and Energy Board be obligated to refund any consideration paid by the Lessor prior to such modification, cancellation, or abrogation, including, but not limited to, bonuses, rentals and royalties.

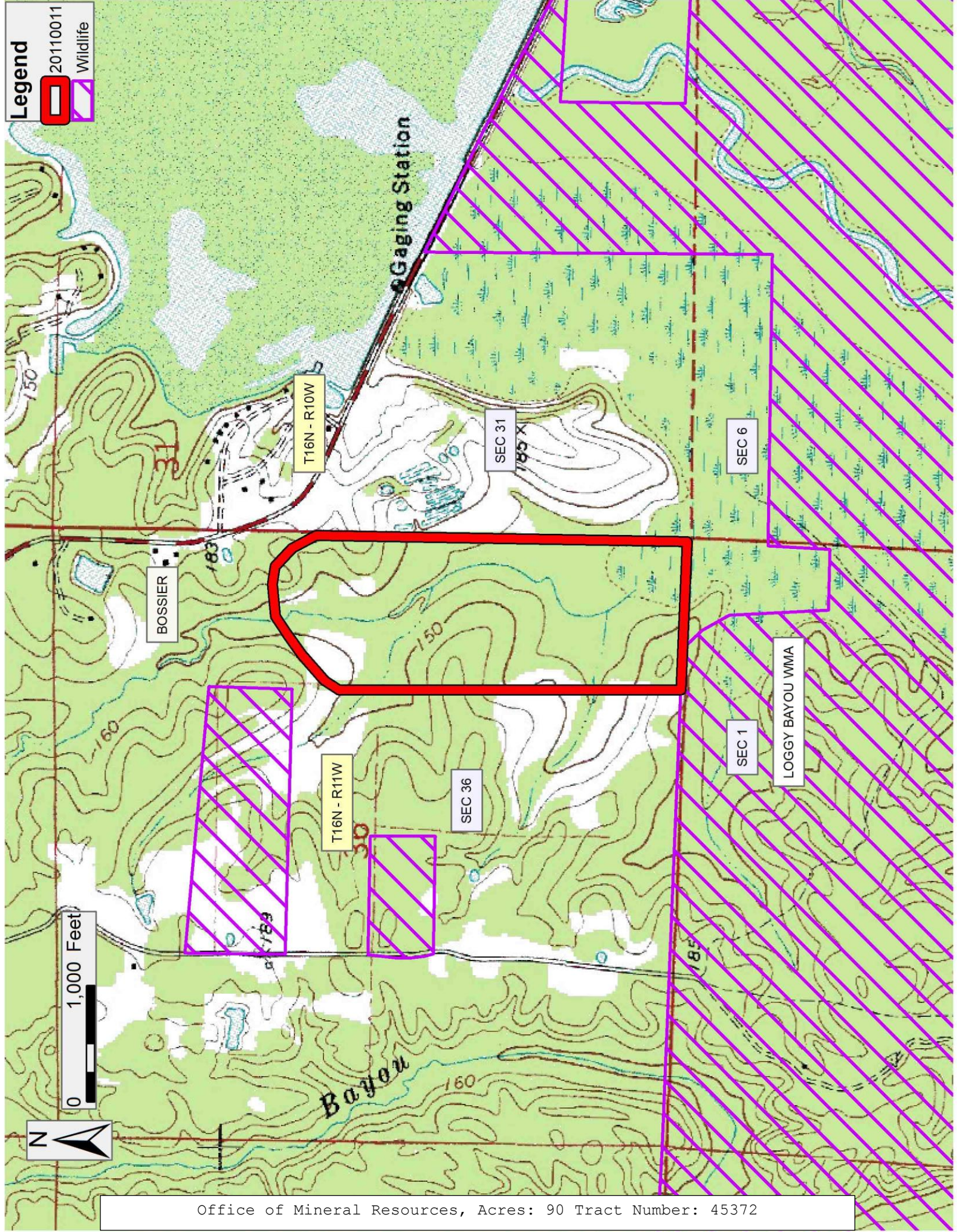
Applicant: BOSSIER NATURAL RESOURCES

Bidder	Cash Payment	Price/Acre	Rental	Oil	Gas	Other

Legend



20110011
Wildlife



Office of Mineral Resources, Acres: 90 Tract Number: 45372