

**TRACT 45383 - Red River Parish, Louisiana**

All of the lands now or formerly constituting the beds and bottoms of all water bodies of every nature and description as to which title is vested in the State of Louisiana, together with all islands arising therein and other lands formed by accretion or by reliction, where allowed by law, excepting tax adjudicated lands, and not presently under mineral lease on December 9, 2020, situated in Red River Parish, Louisiana, and more particularly described as follows: Beginning at a point having Coordinates of X = 1,745,353.58 and Y = 470,679.75; thence South 89 degrees 09 minutes 16 seconds East approximately 3,768 feet to a point on the West boundary of State Lease No. 9600; thence along the boundaries of said State Lease No. 9600 the following courses: Southerly to its Southwest corner, Easterly to its Southeast corner and Northerly to point South 89 degrees 28 minutes 26 seconds West approximately 116 feet from a point having Coordinates of X = 1,754,633.00 and Y = 470,669.00; thence North 89 degrees 28 minutes 26 seconds East approximately 116 feet to a point having Coordinates of X = 1,754,633.00 and Y = 470,669.00; thence South 00 degrees 12 minutes 45 seconds East 5,368.59 feet to Northeast corner of State Lease No. 21954 having Coordinates of X = 1,754,652.91 and Y = 465,300.45; thence along the boundaries of said State Lease No. 21954 the following courses: North 89 degrees 36 minutes 21 seconds West 4,085.02 feet to a point having Coordinates of X = 1,750,567.99 and Y = 465,328.55 and South 00 degrees 08 minutes 24 seconds West 4,113.11 feet to a point having Coordinates of X = 1,750,557.94 and Y = 461,215.44; thence North 89 degrees 29 minutes 00 seconds West 5,246.47 feet to a point having Coordinates of X = 1,745,311.68 and Y = 461,262.75; thence North 00 degrees 15 minutes 18 seconds East 9,417.09 feet to the point of beginning, **LESS AND EXCEPT** and lands owned by Red River School Board situated in Section 16, Township 11 North, Range 9 West, Red River Parish, Louisiana, containing approximately **189 acres**, all as more particularly outlined on a plat on file in the Office of Mineral Resources, Department of Natural Resources. All bearings, distances and coordinates are based on Louisiana Coordinate System of 1927, (North or South Zone), where applicable.

NOTE: The above description of the Tract nominated for lease has been provided and corrected, where required, exclusively by the nomination party. Any mineral lease selected from this Tract and awarded by the Louisiana State Mineral and Energy Board shall be without warranty of any kind, either express, implied, or statutory, including, but not limited to, the implied warranties of merchantability and fitness for a particular purpose. Should the mineral lease awarded by the Louisiana State Mineral and Energy Board be subsequently modified, cancelled or abrogated due to the existence of conflicting leases, operating agreements, private claims or other future obligations or conditions which may affect all or any portion of the leased Tract, it shall not relieve the Lessee of the obligation to pay any bonus due thereon to the Louisiana State Mineral and Energy Board, nor shall the Louisiana State Mineral and Energy Board be obligated to refund any consideration paid by the Lessor prior to such modification, cancellation, or abrogation, including, but not limited to, bonuses, rentals and royalties.

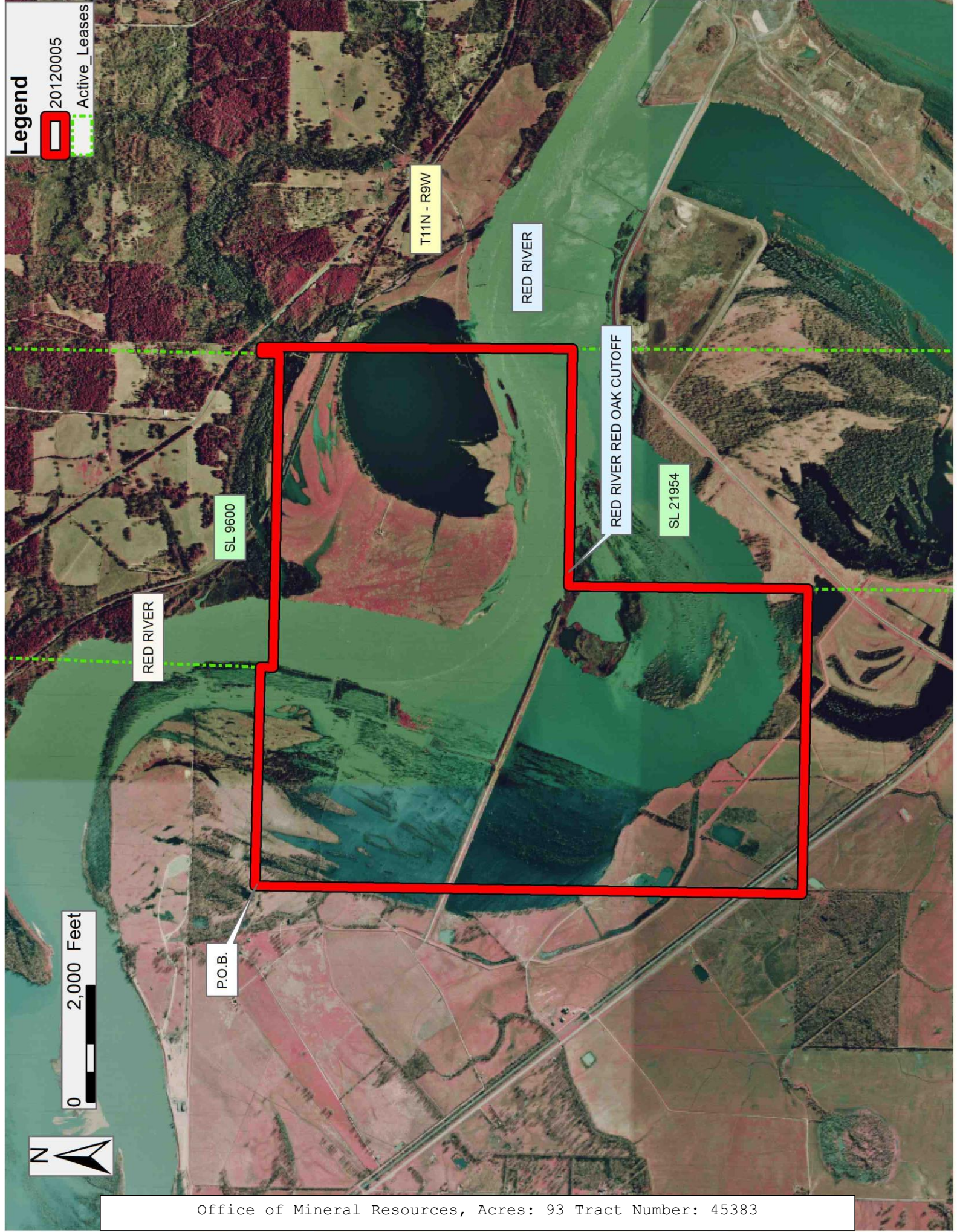
Applicant: CYPRESS ENERGY CORPORATION

Bidder	Cash Payment	Price/Acre	Rental	Oil	Gas	Other

**Legend**

20120005

Active\_Leases



T11N - R9W

RED RIVER

RED RIVER RED OAK CUTOFF

SL 21954

SL 9600

RED RIVER

P.O.B.

0 2,000 Feet



**TRACT 45384 - Red River Parish, Louisiana**

All of the lands now or formerly constituting the beds and bottoms of all water bodies of every nature and description as to which title is vested in the State of Louisiana, together with all islands arising therein and other lands formed by accretion or by reliction, where allowed by law, excepting tax adjudicated lands, and not presently under mineral lease on December 9, 2020, situated in Red River Parish, Louisiana, and more particularly described as follows: Beginning at a point having Coordinates of X = 1,754,633.00 and Y = 470,669.00; thence South 89 degrees 37 minutes 14 seconds East 5,437.12 feet to a point having Coordinates of X = 1,760,070.00 and Y = 470,633.00; thence South 00 degrees 26 minutes 15 seconds West 5,370.16 feet to a point having Coordinates of X = 1,760,029.00 and Y = 465,263.00; thence South 00 degrees 15 minutes 26 seconds East 5,416.46 feet to a point having Coordinates of X = 1,760,053.33 and Y = 459,846.59; thence South 00 degrees 51 minutes 06 seconds West 1,224.61 to a point having Coordinates of X = 1,760,035.13 and Y = 458,622.11; thence South 01 degrees 04 minutes 26 seconds East 2,769.22 feet to a point having Coordinates of X = 1,760,087.02 and Y = 455,853.38; thence West 4,283.47 feet to the Northeast corner of State Lease No. 20404, as amended, having Coordinates of X = 1,755,803.55 and Y = 455,853.38; thence North 89 degrees 59 minutes 30 seconds West 1,115.49 feet along the North boundary of said State Lease No. 20404 to the Southeast corner of State Lease No. 21954 having Coordinates of X = 1,754,688.06 and Y = 455,853.54; thence North 00 degrees 12 minutes 47 seconds West 9,446.97 feet along the east boundary of said State Lease No. 21954 to its Northeast corner having Coordinates of X = 1,754,652.91 and Y = 465,300.45; thence North 00 degrees 12 minutes 45 seconds West 5,368.59 feet to the point of beginning, **LESS AND EXCEPT** and lands owned by Red River School Board situated in Section 16, Township 11 North, Range 9 West, Red River Parish, Louisiana, containing approximately **249 acres**, all as more particularly outlined on a plat on file in the Office of Mineral Resources, Department of Natural Resources. All bearings, distances and coordinates are based on Louisiana Coordinate System of 1927, (North or South Zone), where applicable.

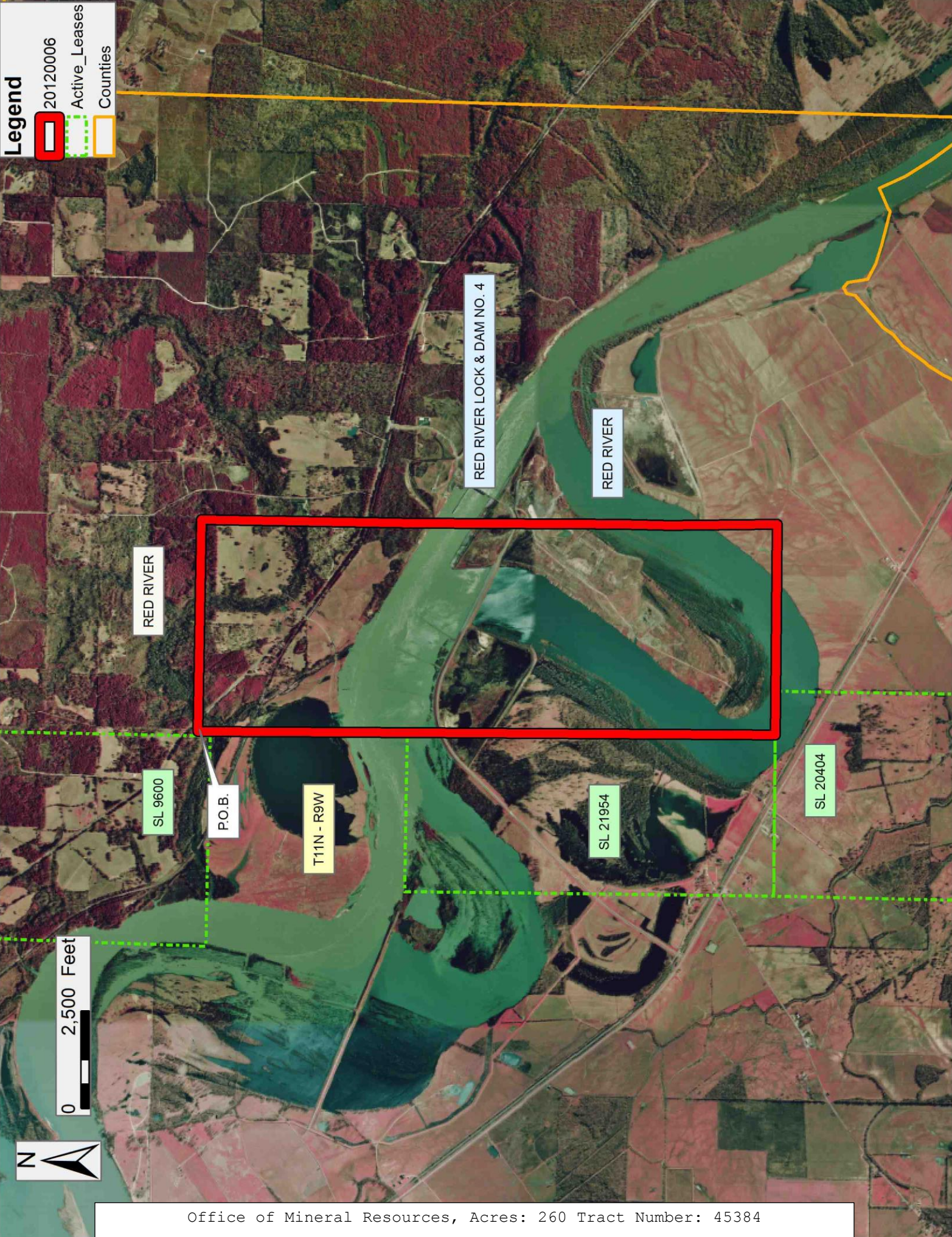
NOTE: The above description of the Tract nominated for lease has been provided and corrected, where required, exclusively by the nomination party. Any mineral lease selected from this Tract and awarded by the Louisiana State Mineral and Energy Board shall be without warranty of any kind, either express, implied, or statutory, including, but not limited to, the implied warranties of merchantability and fitness for a particular purpose. Should the mineral lease awarded by the Louisiana State Mineral and Energy Board be subsequently modified, cancelled or abrogated due to the existence of conflicting leases, operating agreements, private claims or other future obligations or conditions which may affect all or any portion of the leased Tract, it shall not relieve the Lessee of the obligation to pay any bonus due thereon to the Louisiana State Mineral and Energy Board, nor shall the Louisiana State Mineral and Energy Board be obligated to refund any consideration paid by the Lessor prior to such modification, cancellation, or abrogation, including, but not limited to, bonuses, rentals and royalties.

Applicant: CYPRESS ENERGY CORPORATION

Bidder	Cash Payment	Price/Acre	Rental	Oil	Gas	Other

**Legend**

- 20120006
- Active\_Leases
- Counties



Office of Mineral Resources, Acres: 260 Tract Number: 45384

**TRACT 45385 - Red River Parish, Louisiana**

All of the lands now or formerly constituting the beds and bottoms of all water bodies of every nature and description as to which title is vested in the State of Louisiana, together with all islands arising therein and other lands formed by accretion or by reliction, where allowed by law, excepting tax adjudicated lands, and not presently under mineral lease on December 9, 2020, situated in Red River Parish, Louisiana, and more particularly described as follows: Beginning at a point having Coordinates of X = 1,765,498.50 and Y = 465,096.49; thence North 89 degrees 06 minutes 52 seconds East 5,276.33 feet to a point having Coordinates of X = 1,770,774.21 and Y = 465,178.03; thence South 01 degrees 17 minutes 41 seconds West 5,401.96 feet to a point having Coordinates of X = 1,770,652.15 and Y = 459,777.45; thence South 01 degrees 22 minutes 30 seconds West 4,698.05 feet to a point having Coordinates of X = 1,770,539.43 and Y = 455,080.76; thence South 89 degrees 56 minutes 04 seconds West 5,066.65 feet to a point having Coordinates of X = 1,765,472.78 and Y = 455,074.96; thence North 02 degrees 12 minutes 30 seconds West 4,040.87 feet to a point having Coordinates of X = 1,765,317.08 and Y = 459,112.83; thence North 03 degrees 54 minutes 13 seconds East 542.17 feet to a point having Coordinates of X = 1,765,353.99 and Y = 459,653.74; thence North 01 degrees 31 minutes 15 seconds East 5,444.67 feet to the point of beginning, containing approximately **122 acres**, all as more particularly outlined on a plat on file in the Office of Mineral Resources, Department of Natural Resources. All bearings, distances and coordinates are based on Louisiana Coordinate System of 1927, (North or South Zone), where applicable.

NOTE: The above description of the Tract nominated for lease has been provided and corrected, where required, exclusively by the nomination party. Any mineral lease selected from this Tract and awarded by the Louisiana State Mineral and Energy Board shall be without warranty of any kind, either express, implied, or statutory, including, but not limited to, the implied warranties of merchantability and fitness for a particular purpose. Should the mineral lease awarded by the Louisiana State Mineral and Energy Board be subsequently modified, cancelled or abrogated due to the existence of conflicting leases, operating agreements, private claims or other future obligations or conditions which may affect all or any portion of the leased Tract, it shall not relieve the Lessee of the obligation to pay any bonus due thereon to the Louisiana State Mineral and Energy Board, nor shall the Louisiana State Mineral and Energy Board be obligated to refund any consideration paid by the Lessor prior to such modification, cancellation, or abrogation, including, but not limited to, bonuses, rentals and royalties.

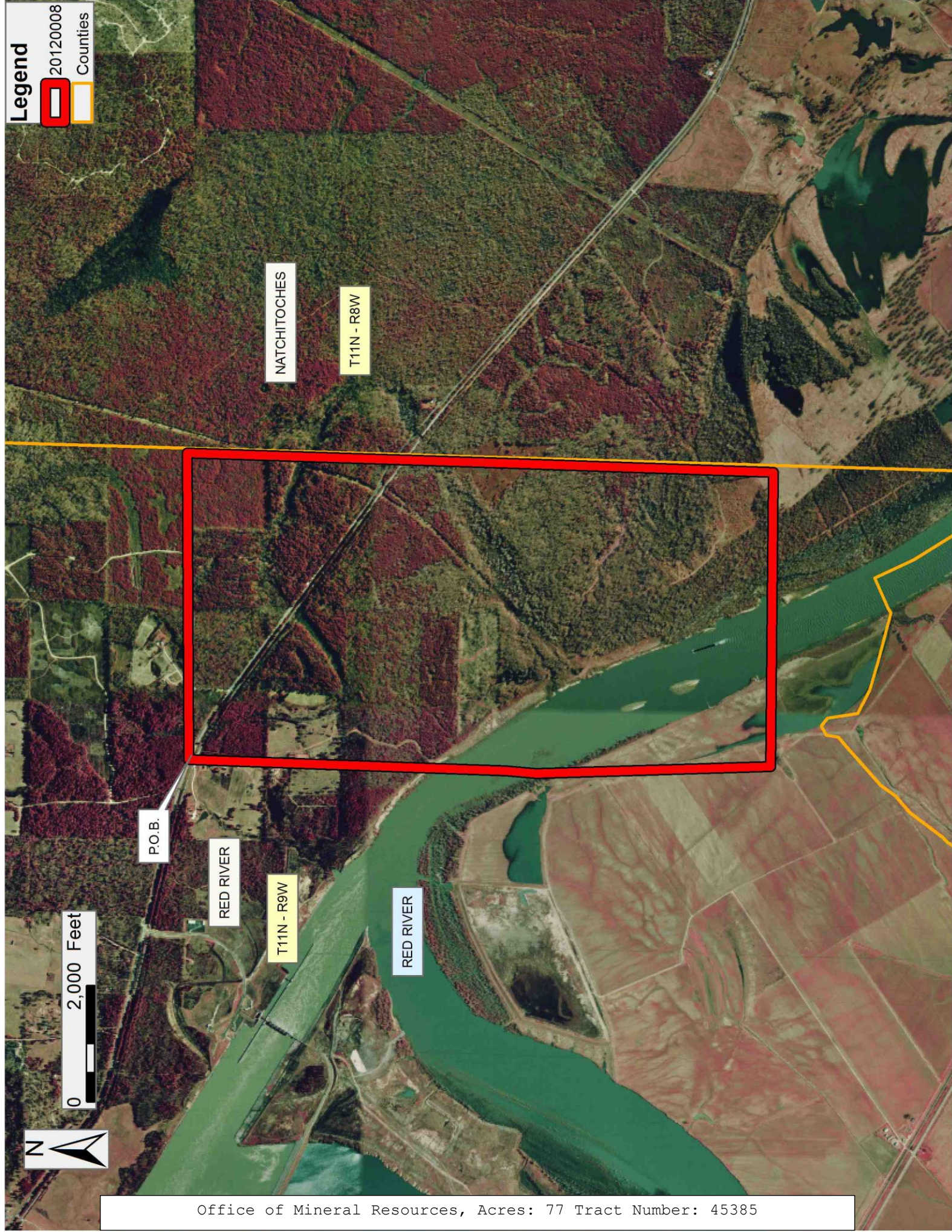
Applicant: CYPRESS ENERGY CORPORATION

Bidder	Cash Payment	Price/Acre	Rental	Oil	Gas	Other



Legend

- 20120008
- Counties



Office of Mineral Resources, Acres: 77 Tract Number: 45385

**TRACT 45386 - Natchitoches and Red River Parishes, Louisiana**

All of the lands now or formerly constituting the beds and bottoms of all water bodies of every nature and description as to which title is vested in the State of Louisiana, together with all islands arising therein and other lands formed by accretion or by reliction, where allowed by law, excepting tax adjudicated lands, and not presently under mineral lease on December 9, 2020, situated in Natchitoches and Red River Parishes, Louisiana, and more particularly described as follows: Beginning at the Northeast corner of State Lease No. 20404, as amended having Coordinates of X = 1,755,803.55 and Y = 455,853.38; thence East 4,283.47 feet to a point having Coordinates of X = 1,760,087.02 and Y = 455,853.38; South 01 degrees 04 minutes 26 seconds East 887.25 feet to a point having Coordinates of X = 1,760,103.65 and Y = 454,966.29; thence North 88 degrees 50 minutes 26 seconds East 5,370.24 feet to a point having Coordinates of X = 1,765,472.78 and Y = 455,074.96; thence North 89 degrees 56 minutes 04 seconds East 5,066.65 feet to a point having Coordinates of X = 1,770,539.43 and Y = 455,080.76; thence South 00 degrees 05 minutes 43 seconds East 5,125.46 feet to a point having Coordinates of X = 1,770,547.95 and Y = 449,955.30; thence North 89 degrees 43 minutes 35 seconds West 9,406.54 feet to a point having Coordinates of X = 1,761,141.51 and Y = 450,000.22; thence North 73 degrees 20 minutes 52 seconds West 1,709.66 feet to a point having Coordinates of X = 1,759,503.55 and Y = 450,490.14; thence North 88 degrees 43 minutes 17 seconds West 3,735.52 feet to the Northeast corner of State Lease No. 21939 and the Southeast corner of said State Lease No. 20404 having Coordinates of X = 1,755,768.96 and Y = 450,573.49; thence North 00 degrees 22 minutes 31 seconds East 5,280.00 feet along the east boundary of said State Lease No. 20404 to its Northeast corner and the point of beginning, containing approximately **99 acres**, all as more particularly outlined on a plat on file in the Office of Mineral Resources, Department of Natural Resources. All bearings, distances and coordinates are based on Louisiana Coordinate System of 1927, (North or South Zone), where applicable.

NOTE: The above description of the Tract nominated for lease has been provided and corrected, where required, exclusively by the nomination party. Any mineral lease selected from this Tract and awarded by the Louisiana State Mineral and Energy Board shall be without warranty of any kind, either express, implied, or statutory, including, but not limited to, the implied warranties of merchantability and fitness for a particular purpose. Should the mineral lease awarded by the Louisiana State Mineral and Energy Board be subsequently modified, cancelled or abrogated due to the existence of conflicting leases, operating agreements, private claims or other future obligations or conditions which may affect all or any portion of the leased Tract, it shall not relieve the Lessee of the obligation to pay any bonus due thereon to the Louisiana State Mineral and Energy Board, nor shall the Louisiana State Mineral and Energy Board be obligated to refund any consideration paid by the Lessor prior to such modification, cancellation, or abrogation, including, but not limited to, bonuses, rentals and royalties.

Applicant: CYPRESS ENERGY CORPORATION

Bidder	Cash Payment	Price/ Acre	Rental	Oil	Gas	Other

**Legend**

- 20120007
- Active\_Leases
- Counties



0 2,500 Feet

